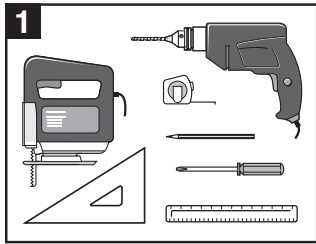




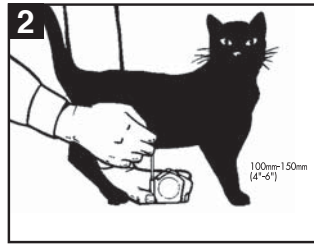
# 4-Way Locking Cat Flap

## Installation Guide

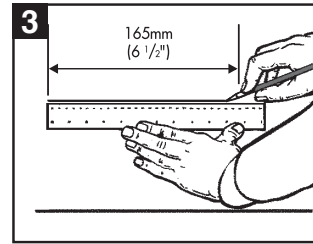
Before installing your cat flap, please read the following step-by-step instructions carefully



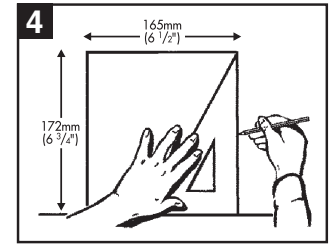
Tools Required



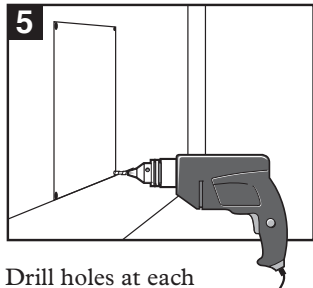
Measure the belly height of your cat. This is usually around 4 to 6 inches.



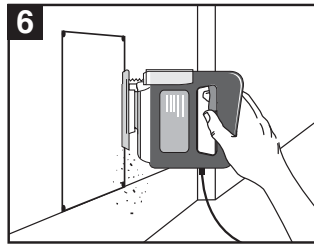
Mark this measurement on the outside of your door and draw a straight horizontal line 6 1/2".



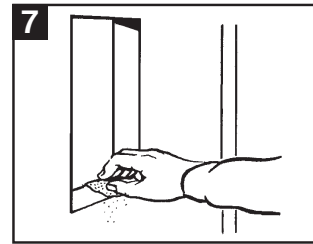
Using the horizontal line as the starting point, draw a square 6 1/2" x 6 3/4".



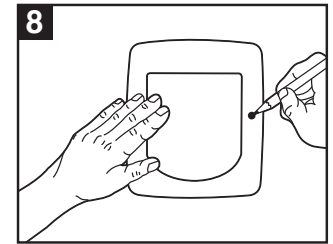
Drill holes at each corner.



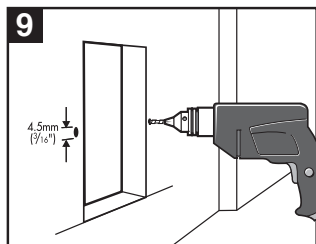
Cut along the lines using a jigsaw.



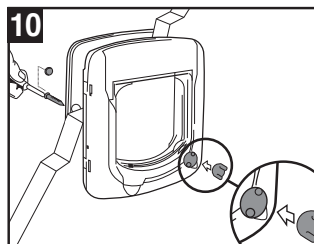
Smooth out the rough edges.



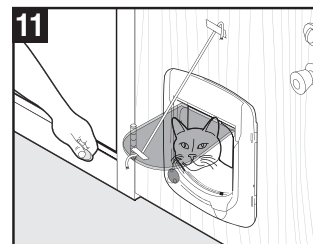
Place the cat flap in the hole, with the red 4-way lock facing inside. Mark the screw holes.



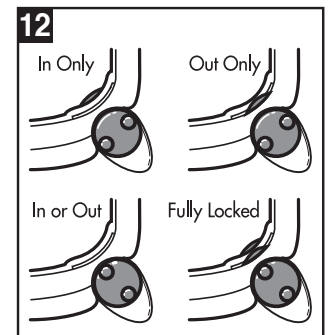
Remove the cat flap and drill holes with a 3/16" drill bit.



Push fit the 4-way lock handle into place.



Temporarily tape open the cat flap. Sometimes it helps for you to be on one side of the door and your pet on the other. Use food or treats to coax your pet through the open door. Let the pet become familiar with passing through. In time, remove the tape and let the flap hang in the unlocked position.



Using the 4-Way lock.

### Product Warranty

Please register your product online at [www.petsafe.net](http://www.petsafe.net). All parts are covered under warranty for the life of this product. Labor is covered for the first year of ownership. Thereafter, there is a minimum service charge for the repair or replacement of the product. Misuse, loss, damage by pet or improper use or handling is not covered. PetSafe® will not pay for loss of time, inconvenience, loss of use of your product or any incidental or consequential damage. Warranty void if product resold.

Please contact the Customer Care Center at 1-800-732-2677 if you need service or for help in troubleshooting and, if needed, to arrange a repair for your product (a service charge may apply). Also, please visit our website [www.petsafe.net](http://www.petsafe.net) for Frequently Asked Questions and Troubleshooting Tips.