

Powr-Flite[®]

COMMERCIAL FLOOR CARE EQUIPMENT

Operator's Manual



High Speed Burnishers

**1600 RPM
Model C1600**

Powr-Flite[®]
COMMERCIAL FLOOR CARE EQUIPMENT

A Tacony Company
Fort Worth, Texas 76140

Your new High Speed Burnisher will afford you many years of trouble-free operating satisfaction provided it is given proper care. Prior to packaging, your High Speed Burnisher was inspected by a Quality Control Technician.

WARNINGS

READ THIS OPERATOR'S MANUAL!

- WARNING:** You must have training in the operation of this machine before using.
- WARNING:** Machines can burn flammable materials and vapors. Do not use this machine with or near fuels, grain dust, solvents, thinners or other flammable materials.
- WARNING:** Do not operate this machine unless it is completely assembled.
- WARNING:** Do not use this machine as a step or to move furniture.
- WARNING:** When disconnecting power cord from electrical outlet, grasp the plug. Pulling it out by the cord itself can damage cord insulation and internal connection to plug. To prevent electric shock, always remove the electrical plug from the electrical outlet before doing any repairs or maintenance to this machine.
- WARNING:** To prevent injury, always remove the electrical plug from the electrical outlet before changing the polishing pad and before leaving the machine.
- WARNING:** To prevent injury, keep hands, feet and loose clothing away from the rotating pad.
- WARNING:** Maintenance and repairs must be done by authorized personnel only.
- WARNING:** Keep all fasteners tight. Keep adjustments according to specifications.
- WARNING:** Keep the electrical parts of the machine dry. For storage, keep the machine in a building.
- WARNING:** Always use a three-wire electrical system connected to the electrical ground. For maximum protection against electric shock, use a circuit that is protected by a ground fault circuit interrupter. Consult with your electrical contractor.
- WARNING:** To prevent damage to the power cord, do not let the pad, pad driver or wheels touch the power cord when the machine is running. Always lift the power cord over the machine.
- WARNING:** Make sure all labels, decals, warning, cautions and instructions are fastened to the machine.

SAFETY INSTRUCTIONS

This Floor Machine should be grounded while in use to protect the operator from electric shock. This machine is equipped with a 3-conductor cord and a 3-prong grounded type attachment cap plug to fit the proper grounding type receptacle. The green (or green and yellow) conductor in the cord is the grounding wire. Never connect this wire to anything other than the grounding blade.

The Floor machine is provided with an attachment cap plug, as shown in Sketch A, and is intended for use on a nominal 120 volt circuit. If a properly grounded receptacle, as shown in Sketch A, is unavailable, an adaptor, as shown in Sketch C, is available and should be installed, as shown in Sketch B, if the outlet box that houses the receptacle is grounded. Be sure to fasten the grounding tap to the faceplate screw.

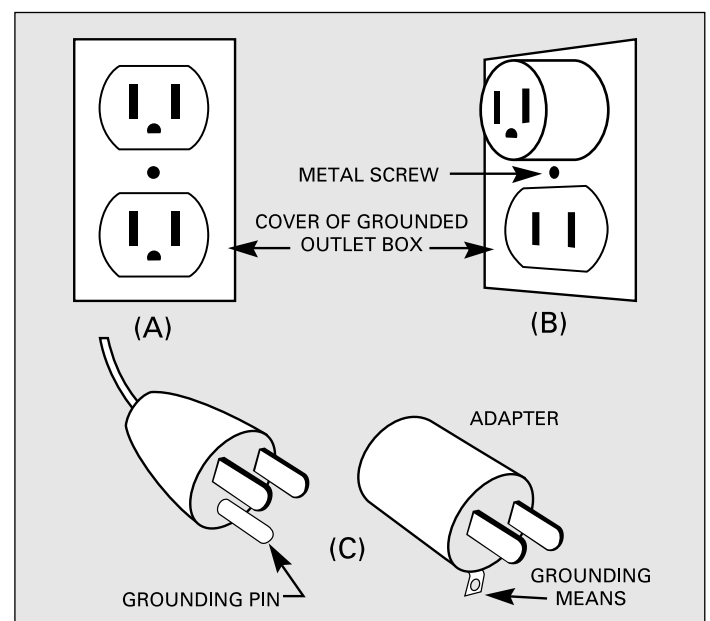
These guidelines are presented for your protection and convenience. Please read them carefully, since a failure to heed these precautions could result in discomfort or injury. When using an electrical appliance, basic safety precautions should always be followed.

ONE LAST REMINDER!

Read All Instructions, Warnings and Cautions Before Using!

WARNING

TO AVOID FIRE, DO NOT USE WITH A FLAMMABLE OR COMBUSTIBLE LIQUID TO CLEAN FLOOR.



UNCRATING

Your High Speed Burnisher was protectively packed to prevent damage in shipment. We suggest that upon removing the unit from its carton, you carefully inspect it for any possible damage in transit. If damage is discovered, immediately notify the transportation company who delivered your machine. As a manufacturer, we are unable to act upon any claim for concealed damage; you must originate the claim.

IMPORTANT SAFEGUARDS

This machine is designed to be safe when used to perform the functions specified in this Operator's Manual. Should damage occur to electrical or mechanical parts, the machine should be repaired by the manufacturer or competent service station before using in order to avoid further damage to the machine or physical injury to user. Your floor machine is equipped with a safety switch lockout device designed for your safety. Do not attempt to bypass or defeat the safety lockout device. Never use any device to lock the power switch triggers in the ON position.

INSTRUCTIONS

Application

The C1600 High Speed Burnisher is used to achieve and/or maintain a high gloss appearance on an established floor finish. The high pad revolution of the floor burnisher combined with a good polishing pad will turn properly established cleaned floor finish into a high gloss, hardened finish known as the "wet look shine". The pads recommended are the image beige or white synthetic pads or the natural hogs hair blended pads.

Preparation of Surface

Before each use of this machine, the floor must be dust mopped with a treated mop and if necessary clean the floor with a damp mop, using a solution of water and neutral cleaner.

PREPARE THE MACHINE FOR OPERATION

WARNING: To prevent injury, always remove the electrical plug from the electrical outlet before changing the polishing pad and before leaving the machine.

- With the handle locked, tip the machine back until the handle is lying flat on the floor.
- To remove the pad-lock pad holder from the flexible pad driver, grasp the center support with your thumb and forefinger and turn the collar counter-clockwise. **(Fig 1)**
- Place a clean or new 20" buffing pad over the alignment ring on the pad holder.
- Replace the collar by turning clockwise until snug. **(Fig 2)**
- Step back and lift the burnisher to the upright position.
- Connect the power cord into a grounded, 3-wire outlet.
- The C1600 Burnisher should be operated with the handle in the unlocked "floating" position to provide excellent maneuverability and automatic pad contact.

NOTE: The hardened steel cam release lever does not require extreme tightening to effectively hold the handle in position. Over-tightening will shorten the functional life of the lever. **(Fig 3)**

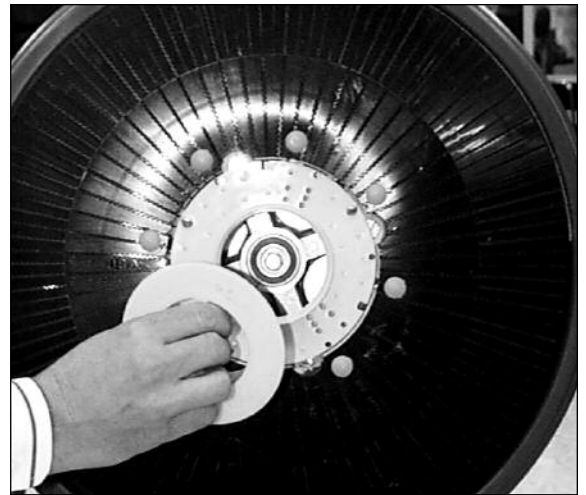


Fig 1



Fig 2

HOW TO OPERATE THE MACHINE

- Plug the machine in as directed and lower the handle to the desired operating height. Push the safety switch forward (**Fig 4**) and squeeze the switch triggers beneath the handle grips. This activates the motor and starts the pad driver, brush or attachment in operation. Each time you release the triggers the safety switch will reset. You will need to follow the direction above to restart the machine. **CAUTION: When leaving the machine unattended, disconnect the wall plug and return the handle to the “locked” upright position to prevent accidental starting.**
- Push the machine forward in a straight line, at a slow walking speed. Overlap each pass by about 1 inch (25 mm).

AFTER USING THE MACHINE

- Upon completion, dust mop with treated mop to pick up all burnishing residue.
- The condition of the floor pad has direct affect on the performance of your burnisher. When the pad becomes dirty, turn it over and use the other side. When finished, wash the pad out and allow it to dry completely before using again.
- Unplug the power cord and wrap it under the cord hook and over the right handle grip.
- Tip the machine back and remove floor pad.
- Wipe off the machine housing and the cord. This will prevent build-up of unnecessary residue.

TRANSPORTING

Use the rear wheels for transporting the C1600. This will insure that the operating wheels remain clean and smooth for use on clean floor surfaces. (Fig 5)

MAINTENANCE

- Once a month, remove the motor cover of the unplugged C1600 by removing the motor cover screws.
- Vacuum out any dust or debris which has accumulated in the motor. (Fig 6)
- Replace motor cover and replace the motor cover screws.
- Check and maintain tightness of all fasteners.
WARNING: do not over-tighten switch housing screws.
- Keep the burnisher clean, especially at the handle tube and collar so the handle tube will move freely through the collar.
- Inspect cord and plug for cuts, gashes or loose prongs; replace as needed.
- The length of the carbon brushes should be inspected annually. If they are no longer extended past the holder window, they should be replaced.
- Replacement of carbon brushes should be done only by a qualified service technician.
- **Disassembly of this motor voids the warranty.**
- Improper disassembly and assembly of this motor can permanently damage the armature.

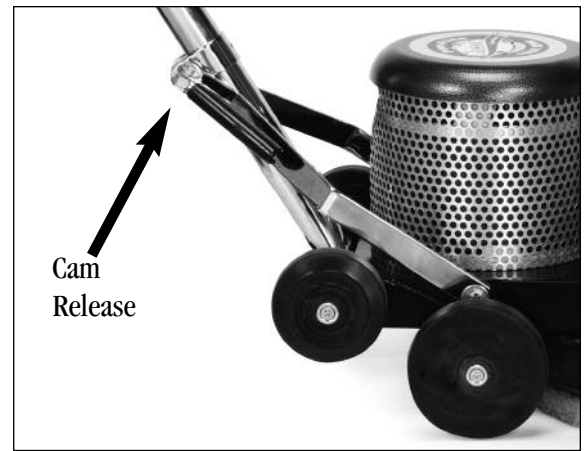


Fig 3

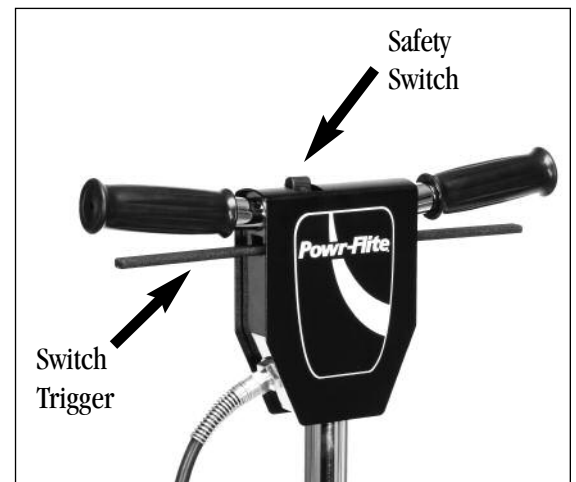


Fig 4

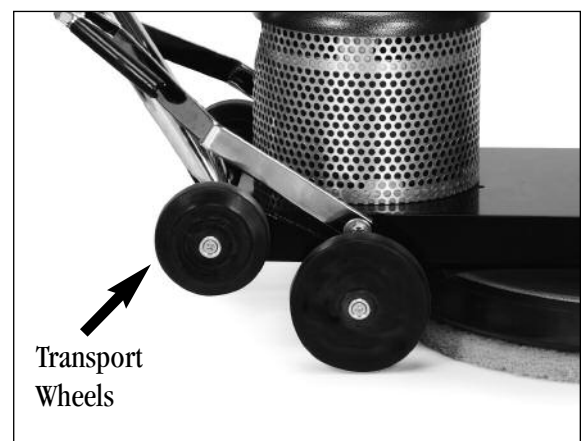


Fig 5

Drive Belt Adjustment

See picture Fig 7

1. Remove four (4) large screws holding drive pad.
2. Remove four (4) screws holding the pad cover.
3. Loosen three (3) motor mount bolts. **Do not** remove the bolts.
4. Using a wrench, turn adjustment nut until it touches the adjustment bolt head. Turn the adjustment bolt to tighten or loosen the belt tension.
5. Correct belt tension allows belt no more than 1/4" of side movement.
6. Tighten the four (4) motor mount bolts with the wrench.
7. Loosen the adjusting bolt until it is snug against adjustment stop molded in housing and turn adjustment nut against pulley mount bracket.
8. Replace pad cover, pad driver and pad center grip.

TROUBLESHOOTING

Burnisher tends to move to the right.

- Do not lift up on handle while operating the burnisher.
- Do not operate with handle set too high. Recommended handle height is from your waist with your arms extended forward.

Prevent circuit overload.

- Do not spray buff with the C1600. Apply a restorer, such as Powr-Flite's Escalate, allow to dry, then burnish.
- Check pad and change if dirty or rough.
- Check area being burnished for cleanliness, area should be damp mopped, scrubbed or swept with treated broom.
- Operator should not continually force the machine with handle pressure.
- Operator should not try to operate burnisher in a side-to-side motion.
- Eliminate any extension cord that is smaller than 12/3 wire or greater than 25 feet in length.

Burnisher will not start.

- Plug is broken or has loose contact. Replace.
- Switch is defective. Replace switch.
- Rectifier is defective. Replace.



Fig 6

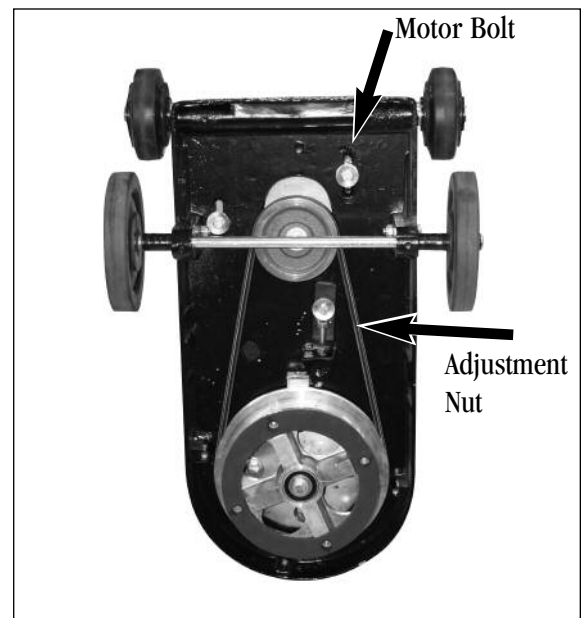
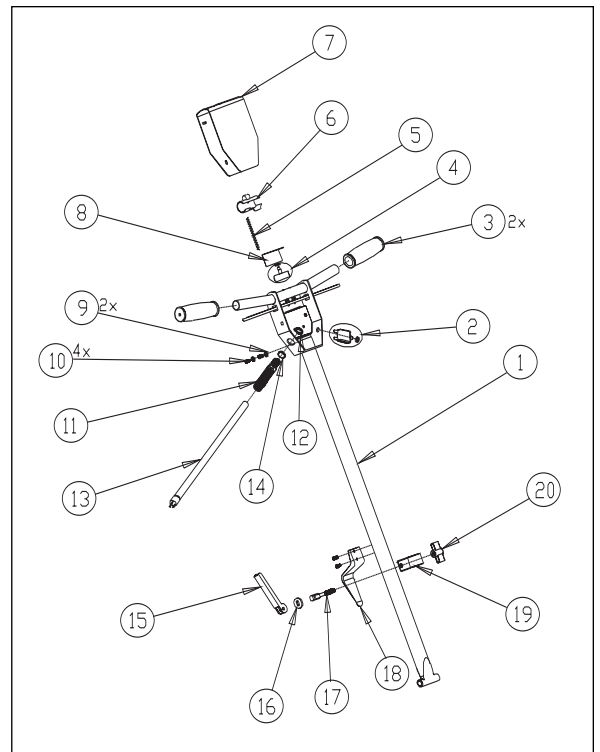
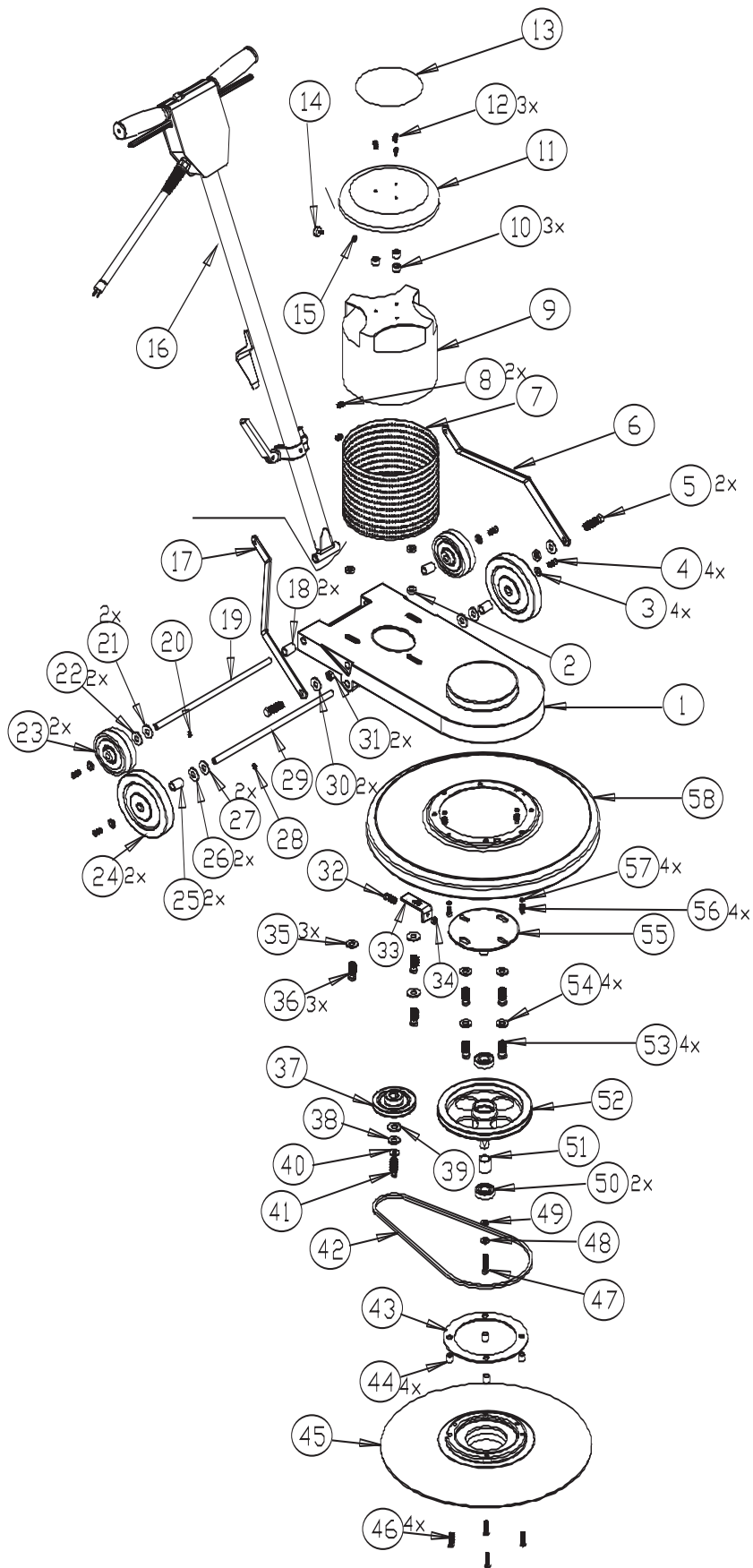


Fig 7



BASE HOUSING

ref#	part #	description
1	X9271	Chassis Metal Burnisher Cast
2	X8947	Spacer, Motor Classic Burnisher
3	X8020	Washer, Countersunk, Axle
4	X8265	Screw 1/2-20 x 3/4 Flat Phil MS Zinc
5	X8227	Bolt 5/16-18 x 1 1/4 Hex Tap Full Thread Zinc
6	X9274	Left Handle Bracket C1600-3
7	X9049	Motor Screen 2 Speed Classic
8	X9050	Spring Classic 2 Speed
9	X8037-1C	C1200 C1600 C2000 Motor w/ Plug
10	X8106	spacer, motor cover, metal
11	X8965	Motor Cover, Metal
12	X8266	10-32 x 3/4 fmhs ss
13	X9273	Label, Classic Burnisher
14	X9405	Bump Stop, Handle"
15	X8256	Nut 8-32 Keps Zinc
16	X8911	Handle, All Metal, Assembly
17	X9275	Right Handle Bracket C1600-3
18	X8107	Spacer, Handle
19	X9289	Axle Transport Wheel
20	X8205	10-32 x 3/8" Socket Screw Set
21	X8101	Washer, Spring, 1" OD x 1/2" ID x .01"
22	X8224	Washer 1/2 SAE Flat Zinc
23	X8935	Wheel, Black, 4" x 1-1/2"
24	X9406	Wheel, Black, 6" x 1-1/16"
25	X8107	Spacer, Handle"
26	X8224	Washer 1/2 SAE Flat Zinc
27	X8101	Washer, Spring, 1" OD x 1/2" ID x .01"
28	X8205	10-32 x 3/8" Socket Screw Set"
29	X9276	Wheel Axle C1600-3
30	X8224	Washer 1/2 SAE Flat Zinc
31	X8231	Nut 5/16-18 Hex Finish Zinc
32	X8227	Bolt 5/16-18 x 1 1/4 Hex Tap Full Thread Zinc
33	X8948	Tensioner, Belt, Classic Burnisher"
34	X8231	Nut 5/16-18 Hex Finish Zinc
35	X8230	3/8" Washer
36	X8212	Washer 1/4 MED Split Lock Zinc
37	X8226	Screw 1/4-20 x 1 1/4 Hex Head Cap Zinc Grade
38	X8889	M1600 O-Groove Pulley
39	X8219	3/8" SAE Flat Washer"
40	X8230	3/8" Washer"
41	X8217	washer, lock, 5/16"
42	X8215	Screw 5/16 -18 X 1 1/2 Hex Cap Grade 5 Zinc
43	X8099-5	Belt 40.5" V M&P Style 1600 Type B Pulley"
44	X9272	Ring Adapter, Pad Driver Spacer
45	X9403	Bearing, Pad Driver Spacer"
46	X8862	Flexible Pad Driver
47	X9402	Screw 5/16-18 X 2"
48	X9327	Screw 5/16 x 3/4 Hex cap Grade 8
49	X8217	washer, lock, 5/16"
50	X8219	3/8" SAE Flat Washer"
51	X8098	Bearing, Ball, Rubber Sealed on Both Sides"
52	X8092	Bearing Spacer
53	X8096	Main Pulley, Burnisher"
54	X8223	3/8-16 x 3/4" hex cap"
55	X8230	3/8" Washer"
56	X8091	Shaft and Plate Weldment
57	X9404	Screw, SHCS, 1/4-20"
58	X9401	Washer, Flat, Brass 1/4"
59	X9299	Pad Cover 20" Metal Burnisher w/ Bumper

HANDLE

ref#	part #	description
1	X8911	Handle, All Metal
2	X8023	Circuit Breaker w/ nuts
3	X8941	Handle Grip
4	F5P	Switch 25A SP Momentary w/ nuts
5	X8915	Spring, Thumb Actuator, Handle Assembly
6	X8914	Thumb Switch, Actuator, Handle Assembly
7	X8912	Switch Box Cover, Metal Handle
8	X8923	Insulation Sheet, 2.5x2.0X0.15, Handle Assembly
9	7CY001	Washer, #10 INT Tooth Lock SS
10	X8207	Screw 10-24 x 1/2, PHIL PAN Type F Zinc
11	SR42	Strain Relief, Metal, Large
12	X8008N	Nut, Lock, 1/2" Steel Conduit Regal 801 or equal
13	M1407G	12/3 75' STWA Gray Cord
14	SR36	Strain Relief Washer
15	X8014	Cam Lever Handle, Only Sell X8012A
16	X8028	Washer, Cam w/ slot
17	X8015	Stud, Adjustable, Cam/Handle
18	X8013	Cord Hook, Plated
19	X8012	Clamp, Collar, Handle
20	X8016	Knob, Plastic, Handle Clamp

***ONE LAST REMINDER! READ ALL INSTRUCTIONS,
WARNINGS AND CAUTIONS BEFORE USING EQUIPMENT.***

These guidelines are presented for your protection and convenience. Please read them carefully, since a failure to heed these precautions could result in discomfort or injury. When using an electrical appliance, basic safety precautions should always be followed.

***WARNING
TO AVOID FIRE, DO NOT USE WITH A FLAMMABLE
OR COMBUSTIBLE LIQUID TO CLEAN FLOOR.***

Powr-Flite[®]
COMMERCIAL FLOOR CARE EQUIPMENT

A Tacony Company
Fort Worth, Texas 76140
800.880.2913