



Adobe Drift - 53509



Louvre Granite - 53503

PALISADE™

Waterproof, Grout-Free Wall Tiles

- Waterproof, lightweight, rigid PVC
- Scratch- and UV-resistant
- Fast and easy installation, no grout required
- Unique interlocking edges look like grout lines
- Glues onto almost any surface
- Easy to clean & maintain
- 10-year warranty



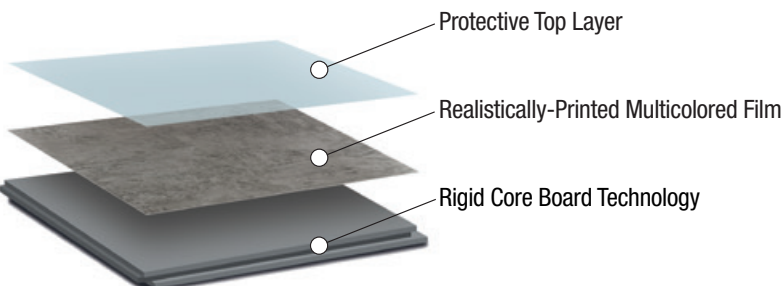
PALISADE

Waterproof, Grout-Free Wall Tiles

Palisade waterproof, grout-free wall tiles and planks have unique interlocking joints and can be cut to size for an easy, groutless installation. This versatile, low-maintenance tile is perfect for wet areas like showers and bathrooms or for commercial high-traffic areas in multi-family units, hotels, restaurants and hospitals.

Surface Burning Characteristics	ASTM E 84 Class "A" fire-rated – Flame Class "C" fire-rated – Smoke
Durability	Waterproof, mold- and mildew-resistant
Material	Virgin-grade rigid PVC
Compatibility	Wall panels install as a glue-up application with recommended adhesive
Warranty	10-year limited warranty

Durable, Engineered Composition



Interlocking edges require no grout

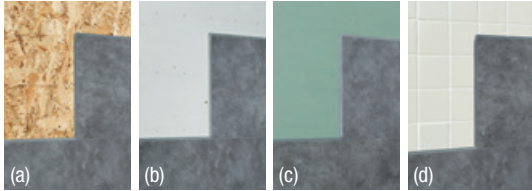
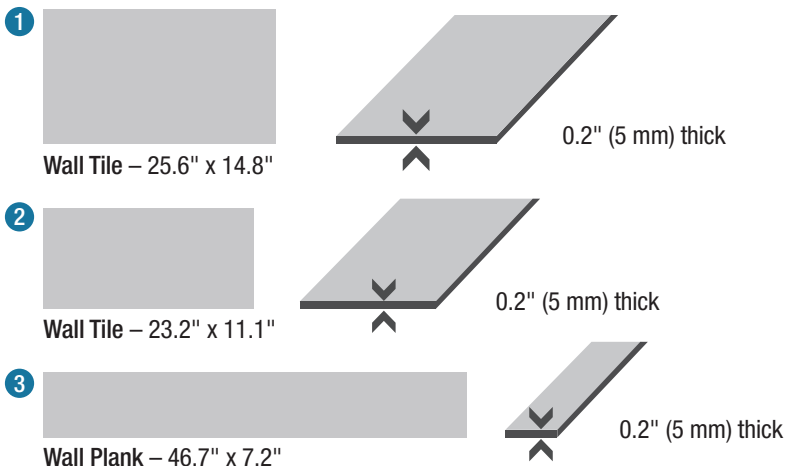


Glues onto almost any surface



Lock tiles by sliding into joint
For wet environments, use a silicone-based sealant in seams.

Size Options



Palisade can be installed over many substrates including (a) OSB/plywood, (b) drywall, (c) water-resistant board and (d) ceramic tile



Venetian Marble - 53511



Oak Mocha - 54082



Ashen Slate - 53500



Prado Granite - 53005



Carrara Marble - 53510



Adobe Drift - 53009



Grecian Earth - 53501



Rain Cloud - 53007

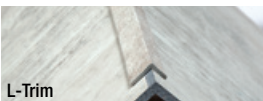
Matching Trim Options



Inside Corner Trim



J-Trim



L-Trim

Inside Corner Trim, J-Trim & L-Trim add a finished look to exposed tiles, edges and corners. Use adhesive to affix and finish with sealant.

- 189## Inside Corner Trim – 94" (5 pack)
- 190## J-Trim – 94" (5 pack)
- 191## L-Trim – 94" (5 pack)
- 173## Trim Kit – 94" (2 Inside Corner Trim, 2 J-Trim & 2 L-Trim)

= trim finish/color

Trim Finishes

- | | |
|------------------------|----------------------|
| 00 - Ashen Slate | 07 - Rain Cloud |
| 01 - Grecian Earth | 08 - Wintry Mix |
| 02 - Frost Nickel | 09 - Adobe Drift |
| 03 - Louvre Granite | 10 - Carrara Marble |
| 04 - Hermitage Granite | 11 - Venetian Marble |
| 05 - Prado Granite | 80 - Gray Oak |
| 06 - Wind Gust | 81 - Natural Oak |
| | 82 - Oak Mocha |

1 Wall Tiles – 25.6" x 14.8" x 0.2" (5 mm) • Carton: 8 tiles • 21 sq. ft.



Ashen Slate 53000



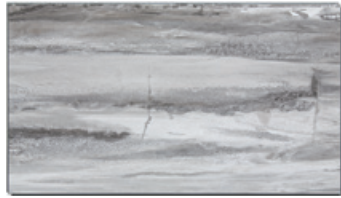
Grecian Earth 53001



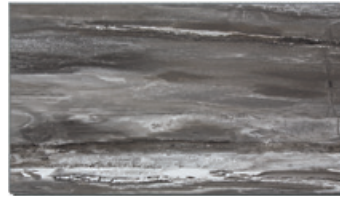
Frost Nickel 53002



Louvre Granite 53003



Hermitage Granite 53004



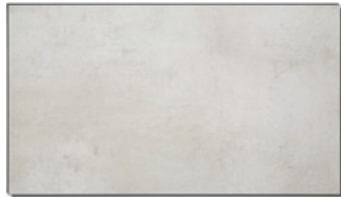
Prado Granite 53005



Wind Gust 53006



Rain Cloud 53007



Wintry Mix 53008



Adobe Drift 53009



Carrara Marble 53010



Venetian Marble 53011

2 Wall Tiles – 23.2" x 11.1" x 0.2" (5 mm) • Carton: 10 tiles • 17.9 sq. ft.



Ashen Slate 53500



Grecian Earth 53501



Frost Nickel 53502



Louvre Granite 53503



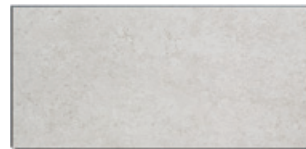
Hermitage Granite 53504



Prado Granite 53505



Wind Gust 53506



Rain Cloud 53507



Wintry Mix 53508



Adobe Drift 53509



Carrara Marble 53510



Venetian Marble 53511

3 Wall Planks – 46.7" x 7.2" x 0.2" (5 mm) • Carton: 7 tiles • 16.3 sq. ft.



Gray Oak 54080



Natural Oak 54081



Oak Mocha 54082

For more information or to place an order, please call 800-434-3750 or email sales@acpideas.com. Visit us online at palisade-tiles.com