



WEEDCLEAR™

LAWN WEED KILLER

READY-TO-USE,

RESULTS IN HOURS

KILLS OVER

250
WEEDS



DOLLARWEED

DANDELION

CLOVER

CHICKWEED

WON'T HARM LAWN GRASSES WHEN USED AS DIRECTED

FOR HOME LAWNS ONLY

KEEP OUT OF REACH OF CHILDREN

CAUTION See attached booklet for complete Precautionary Statements and Directions for Use

Active Ingredients:

2,4-D, 2-chlorophenyl ester	0.10475
Metsulfuron-methyl	0.02225
Trifluralin	0.01225
Carfentrazone-ethyl	0.00725
Other Ingredients	89.77925
TOTAL	100.00075

This Product Contains:

0.0000 lb. 2,4-Dichlorophenoxyacetic acid equivalent (0.12225)
0.0000 lb. 4-(1-methyl-2-pyrrolidinyl) pyridinyl propanoic acid equivalent (0.02225)
0.0000 lb. 1-(1-methyl-2-pyrrolidinyl) ethyl ether equivalent (0.01225)
0.0000 lb. Ethyl 2-chloro-3-methylbutanoate 4-(4-chloro-3-methyl-5-oxo-1H-imidazol-2-yl)-4,4-dimethyl-2-pyrrolidinone propanoate per gallon or 0.00725
1.274 lb. Total 2,4-D, Trifluralin, and Metsulfuron-methyl per gallon or 0.00725

Isomer specific by ADAC Methods

NET CONTENTS 1 gal / 3.78 L



REFILL

LB13858

STORAGE AND DISPOSAL

Do not contaminate water, food, or feed by storage and disposal. Keep from freezing. Keep pesticide in original container. Do not put into food or drink containers. Avoid contamination of feed and foodstuffs. Store in a cool, dry place, preferably in a locked storage area.

PESTICIDE STORAGE	Flip down spout on cap. NO NEED TO DISCONNECT SPRAYER HOSE FROM CAP. Completely dispense product in sprayer prior to storage. Twist sprayer nozzle to the OFF position. Flip the Comfort Wand® wand closed and place sprayer back in side carrier holder.
--------------------------	---

PESTICIDE DISPOSAL AND CONTAINER HANDLING	Nonrefillable container. Do not reuse or refill this container. If empty: Place in trash or offer for recycling if available. If partly filled: Call your local solid waste agency for disposal instruction. Never place unused product down any indoor or outdoor drain.
--	--

PRECAUTIONARY STATEMENTS

HAZARDS TO HUMANS AND DOMESTIC ANIMALS

CAUTION: Harmful if absorbed through the skin. Avoid contact with skin, eyes, or clothing. Wash thoroughly with soap and water after handling and before eating, drinking, chewing gum, using tobacco or using the toilet.

FIRST AID

IF ON SKIN	<ul style="list-style-type: none">• Take off contaminated clothing.• Rinse skin immediately with plenty of water for 15 – 20 minutes.• Call a poison control center or doctor for treatment advice.
-------------------	---

Have the product container or label with you when calling a poison control center or doctor or going for treatment. You may also contact 1-877-465-5161 for emergency medical treatment advice.

ENVIRONMENTAL HAZARDS

This pesticide is toxic to fish and aquatic invertebrates and may adversely affect non-target plants. To protect the environment, do not allow pesticide to enter or run off into storm drains, drainage ditches, gutters or surface waters. Applying this product in calm weather when rain is not predicted for the next 24 hours will help to ensure that wind or rain does not blow or wash pesticide off the treatment area.

This chemical has properties and characteristics associated with chemicals detected in groundwater. The use of this chemical in areas where soils are permeable, particularly where the water table is shallow, may result in groundwater contamination. Application around a cistern or well may result in contamination of drinking water or groundwater.

NOTICE: To the extent consistent with applicable law, the buyer assumes all risks of use, storage or handling of this product not in accordance with label directions.



If for any reason you, the consumer, are not satisfied with this product, mail us your original proof of purchase to obtain a full refund of your purchase price.

©2019 The ORTHO Group. World rights reserved.
Sold by **The ORTHO Group**
P.O. Box 190, Marysville, OH 43040
EPA Reg. No. 2217-905-239
EPA Est. No. 239-IA-3



Questions & Comments
Call 1-800-225-2883
or ortho.com



LB13869

DIRECTIONS FOR USE

It is a violation of Federal law to use this product in a manner inconsistent with its labeling.

Restrictions:

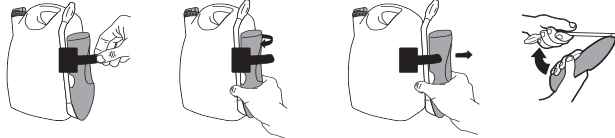
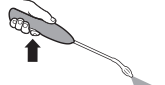
- Do not apply this product in a way that will contact any person or pet, either directly or through drift. Keep people and pets out of the area during application.
- Do not allow people or pets to enter the treated area until spray has dried.
- Do not apply directly to or near water, storm drains, gutters, sewers, or drainage ditches. Do not apply within 25 feet of rivers, fish ponds, lakes, streams, reservoirs, marshes, estuaries, bays, and oceans. Do not apply when windy. To prevent product run-off, do not over water the treated areas to the point of runoff or apply when raining or when rain is expected that day.
- It is the responsibility of the applicator to avoid spray drift at the application site. Do not allow the herbicide solution to mist, drip, drift, or splash onto desirable broadleaf plants, as small amounts of this product can damage sensitive plants near the treated area. If desirable plants are accidentally sprayed, immediately rinsing leaves with water may reduce or eliminate plant damage.
- Do not apply as a fine mist because of potential for injury to desirable plants.
- Do not use this product on or near desirable plants, including contact of spray on exposed root systems or adventitious shoots within the drip line of desirable trees and shrubs, since injury may result.

WHEN TO APPLY

- Spray when weeds are actively growing.
- Spray when air temperatures are below 90°F and are not expected to exceed 90°F for 6 hours.
- Hard to kill weeds may require a repeat application in 30 days. Do not make a repeat application for 30 days. Limit of two applications per year.
- Rain or watering 6 hours after application will not wash away effectiveness.
- Weeds in newly seeded lawns may be sprayed after the lawn has been mowed 3 times.
- The number of spot treatments is limited to 2 per year.

IMPORTANT: Do not use this product for controlling weeds in vegetable gardens, flower beds or around shrubs or ornamental plants. Do not use on or around fruits, vegetables or flowers. Temporary discoloration may occur on St. Augustinegrass, centipedegrass, and bentgrass lawns. Do not apply as a fine mist because of potential for injury to desirable plants.

BATTERY POWERED WAND

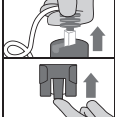
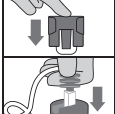
REMOVE	<ul style="list-style-type: none"> • Remove wand from side clip. • Unwrap hose completely. • Remove protective strip from battery compartment to activate batteries. 
CONNECT	<ul style="list-style-type: none"> • Insert plug at end of hose into spout on cap until it clicks. • Flip up spout. • Spout must remain up while spraying.
EXTEND	<ul style="list-style-type: none"> • Flip open wand until it locks into position.
SPRAY	<ul style="list-style-type: none"> • Twist nozzle at end of wand to desired spray pattern. • Hold trigger for continuous spray. 

HOW TO USE

- Follow illustrations and instructions above.
- Twist nozzle at end of wand to desired spray pattern.
- Point wand away from body and hold trigger for continuous spray.
- Release trigger to stop spray.
- Aim at center of weed and spray to lightly cover.

REFILL DIRECTIONS

How to attach the Wand to Ortho® WeedClear™ Lawn Weed Killer Ready-to-Use, Refill Bottle:

Removing Wand from original bottle		<ul style="list-style-type: none"> • Remove the Wand by pulling the plug from the spout on cap. • At the bottom of the side clip press the middle tab up and slide the clip upwards to remove it from the bottle.
Adding Wand to Ortho® WeedClear™ Lawn Weed Killer Ready-To-Use,		<ul style="list-style-type: none"> • Slide the side clip downward on the knob located on the side of the refill container. • Insert plug at end of hose into spout on cap until it clicks.

Ortho® WeedClear™ Lawn Weed Killer Ready-to-Use, kills listed broadleaf weeds in lawns - down to the root. Kills listed weeds - not lawn grasses when used according to directions. Ready-To-Use. No mixing.

BROADLEAF WEEDS CONTROLLED

Ortho® WeedClear™ Lawn Weed Killer Ready-To-Use, will control or suppress the following broadleaf weeds.

Amaranth, purple; Amaranth, slender; Aster, heath; Aster, white heath; Aster, purple; Aster, white prairie; Artichoke; Austrian fieldcress; Bedstraw, catch-weed; Bedstraw, smooth; Bedstraw, northern; Bedstraw, pineywoods; Beggar-ticks, hairy; Betony, Florida; Bindweed, field; Bindweed, hedge; Bitter Wintercress; Bitter-cress, hairy; Bitterweed; Black-eyed Susan; Black medic; Blood-flower milkweed; Blue lettuce; Brassbuttons; Bristly oxtongue; Broomweed; Buckhorn; Bull-nettle; Bur-clover; Burdock; Burweed, lawn; Buttercup, bulbous; Buttercup, creeping; Buttonweed, common (poorjoe); Buttonweed, Virginia; Carolina geranium; Carpetweed; Catnip; Catsear, spotted (false dandelion); Chamber bitter; Chickweed, common; Chickweed, mouse-ear; Chickweed, sticky; Chicory; Cinquefoil; Clover, crimson; Clover, Alyce; Clover, hop; Clover, rabbit-foot; Clover, red; Clover, strawberry; Clover, yellow sweet; Clover, white sweet; Clover, white; Cockle; Cocklebur; Cocklebur, spiny; Common mullein; Corn spurry; Creeping beggar-weed; Creeping Jenny (creeping Charlie); Cupid's shaving brush; Cudweed; Daisy, English; Daisy, oxeye; Dandelion, common; Dandelion, false; Day-flower; Deadnettle; Dichondra; Dock, broadleaf; Dock, curly; Dogbane; Dog-fennel; Dollarweed (Pennywort); Dove-weed; Elderberry; Falseflax; False sunflower; Fiddleneck; Filaree, redstem; Filaree, whitestem; Fleabane, daisy (annual); Fleabane, rough; Galinsoga, hairy; Galinsoga, smallflower; Goldenrod; Ground ivy; Groundsel; Gumweed; Hairy fleabane; Hawkweed, meadow; Hawkweed, mouse-ear; Hawkweed, orange; Hawkweed, yellow; Healall; Heart-leaf drymary; Hemp; Henbit; Hoary-cress; Horsenettle; Horseweed; Jimsonweed; Johnny-jumpup violet; Knawel; Knotweed, prostrate; Kochia; Lambsquarters; Lespedeza; Mallow, alkali; Mallow, bristly; Mallow, common; Mallow, dwarf; Mallow, Venice; Marcela; Matchweed; Mexican-weed; Moneywort; Morningglory, bigroot; Morningglory, ivyleaf; Morningglory, red; Morningglory, tall; Morningglory, woolly; Mugwort; Mustard, ball; Mustard, black; Mustard, Indian; Mustard, tansy; Mustard, tumble; Mustard, white; Mustard, blue; Mustard, hedge; Mustard, wormseed; Nettle, stinging; Nettle, tall; Nettle, wood; Parsley-piert; Parsnip; Pearlwort; Pennycress; Pepperweed, perennial; Pepperweed, Virginia (Peppergrass); Pigweed, prostrate; Pigweed, redroot; Pigweed, Russian; Pigweed, smooth; Pigweed, tumble; Pineapple weed; Plains coreopsis (tickseed); Plantain, black-seed; Plantain, bracted; Plantain, broadleaf; Plantain, buckhorn; Plantain, hoary; Plantain, narrow-leaf; Plantain, slender; Plantain, woolly; Poison ivy; Poison oak; Pokeweed; Prairie sunflower; Prickly lettuce (compass plant); Prickly sida; Prostrate knotweed; Puncturevine; Purslane, common; Pusley, Brazilian; Pusley, Florida; Pusley, large flower; Ragweed, bur; Ragweed, common; Ragweed, lance-leaf; Ragweed, western; Redstem filaree; Rough cinquefoil; Scarlet pimpernel; Shepherd's purse; Smartweed, ladythumb; Smartweed, pale; Smartweed, Pennsylvania; Smooth chaff-flower; Smooth dock; Sorrel, red (sheep); Sowthistle, annual; Sowthistle, spiny; Spanish needles; Speedwell, bi-lobed; Speedwell, common; Speedwell, corn; Speedwell, ivyleaf; Speedwell, slender; Speedwell, snow; Speedwell, thyme-leaf; Spiny amaranth; Speedwell, Persian; Speedwell, purslane; Spurge, spotted; Spurge, prostrate; Star of Bethlehem; Strawberry, Indian mock; Tansy ragwort; Tanweed; Thistle, blessed; Thistle, bull; Thistle, Canada; Thistle, Flodman's; Thistle, musk; Thistle, plumeless; Thistle, prairie; Thistle, Russian; Thistle, Scotch; Thistle, wavy-leaf; Thistle, yellow; Trailing crown-vetch; Velvetleaf; Vervain, blue; Vervain, hoary; Vervain, prostrate; Vervain, tall; Vetch; Vetch, narrow-leaf; Vetch, milk; Vetch, narrow-leaf; Vetch, wild; Virginia creeper; Western clematis; Western salsify; Wild aster; Wild buckwheat; Wild carrot; Wild four-o'clock; Wild garlic; Wild lettuce; Wild marigold; Wild mustard; Wild onion; Wild parsnip; Wild radish; Wild rape; Wild strawberry; Wild sweet potato; Wild violet; Woodsorrel, creeping; Woodsorrel, violet; Woodsorrel, yellow (*Oxalis*); Woolly croton; Wormseed; Yarrow, common; Yarrow, western; Yarrow, yellow; Yellow Rocket

STORAGE AND DISPOSAL

Do not contaminate water, food, or feed by storage and disposal. Keep from freezing. Keep pesticide in original container. Do not put into food or drink containers. Avoid contamination of feed and foodstuffs. Store in a cool, dry place, preferably in a locked storage area.

PESTICIDE STORAGE

Flip down spout on cap. **NO NEED TO DISCONNECT SPRAYER HOSE FROM CAP.** Completely dispense product in sprayer prior to storage. Twist sprayer nozzle to the OFF position. Flip the Comfort Wand® wand closed and place sprayer back in side carrier holder.

PESTICIDE DISPOSAL AND CONTAINER HANDLING

Nonrefillable container. Do not reuse or refill this container. **If empty:** Place in trash or offer for recycling if available. **If partly filled:** Call your local solid waste agency for disposal instruction. Never place unused product down any indoor or outdoor drain.

PRECAUTIONARY STATEMENTS

HAZARDS TO HUMANS AND DOMESTIC ANIMALS

CAUTION: Harmful if absorbed through the skin. Avoid contact with skin, eyes, or clothing. Wash thoroughly with soap and water after handling and before eating, drinking, chewing gum, using tobacco or using the toilet.

FIRST AID

IF ON SKIN

- Take off contaminated clothing.
- Rinse skin immediately with plenty of water for 15 - 20 minutes.
- Call a poison control center or doctor for treatment advice.

Have the product container or label with you when calling a poison control center or doctor or going for treatment. You may also contact 1-877-465-5161 for emergency medical treatment advice.

ENVIRONMENTAL HAZARDS

This pesticide is toxic to fish and aquatic invertebrates and may adversely affect non-target plants. To protect the environment, do not allow pesticide to enter or run off into storm drains, drainage ditches, gutters or surface waters. Applying this product in calm weather when rain is not predicted for the next 24 hours will help to ensure that wind or rain does not blow or wash pesticide off the treatment area.

This chemical has properties and characteristics associated with chemicals detected in groundwater. The use of this chemical in areas where soils are permeable, particularly where the water table is shallow, may result in groundwater contamination. Application around a cistern or well may result in contamination of drinking water or groundwater.

NOTICE: To the extent consistent with applicable law, the buyer assumes all risks of use, storage or handling of this product not in accordance with label directions.



If for any reason you, the consumer, are not satisfied with this product, mail us your original proof of purchase to obtain a full refund of your purchase price.

MODO DE EMPLEO

Es una violación a la ley federal usar este producto con otros fines que los indicados en la etiqueta.

Restricciones:

- No aplique este producto de forma que entre en contacto con otras personas o mascotas, ya sea directamente o al ser arrastrado por el viento. Durante la aplicación, mantenga alejadas del área a las personas y las mascotas.
- No permita que las personas o las mascotas ingresen al área tratada hasta que el rociado se haya secado.
- No aplique directamente ni cerca de agua, drenajes pluviales, cunetas, alcantarillas o zanjas de desagüe. No aplique a menos de 25 pies (8 m) de distancia de ríos, estanques de peces, lagos, arroyos, pantanos, marismas, estuarios, bahías y océanos. No aplique cuando haga viento. Para evitar escurrimientos del producto, no riegue las áreas tratadas al grado que escurran ni lo aplique cuando esté lloviendo o si se pronostican lluvias para ese día.
- Es responsabilidad de quien lo aplica evitar que el rocío sea arrastrado por el viento fuera del lugar de la aplicación. No permita que la solución herbicida rocíe, gotee, derrame o salpique las plantas de hoja ancha que no desee eliminar, pues pequeñas cantidades de este producto pueden dañar las plantas sensibles que estén cerca del área tratada. De rociar accidentalmente plantas que no desee eliminar, enjuagar de inmediato las hojas con agua puede reducir o eliminar el daño para la planta.
- No aplique como una niebla fina por los posibles daños a las plantas que no desea eliminar.
- No use este producto en plantas que no desee eliminar ni cerca de ellas, incluyendo el contacto del rocío con los sistemas de raíces expuestos o los brotes fortuitos dentro de la línea de goteo de árboles y arbustos deseables, pues pueden sufrir daños.

CUÁNDO APLICARLO

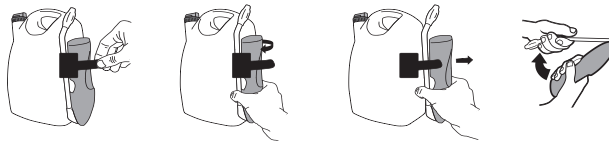
- Rocíe cuando las malezas estén en crecimiento activo.
- Rocíe cuando la temperatura del aire esté por debajo de los 90 °F (32 °C) y no se espere que exceda esta temperatura durante 6 horas.
- Las malezas difíciles de eliminar tal vez necesiten que se repita la aplicación a los 30 días. No repita la aplicación durante 30 días. Límite de dos aplicaciones al año.
- Si llueve o riega 6 horas después de la aplicación, el producto no perderá su eficacia.
- Las malezas en prados recién sembrados pueden rociarse después del tercer corte de césped.
- El número de tratamientos focalizados está limitado a 2 por año.

IMPORTANTE: No use este producto para controlar las malezas en huertos de hortalizas, macizos de flores ni alrededor de arbustos o plantas ornamentales. No lo utilice en ni alrededor de plantas frutales, hortalizas o flores. Cierta decoloración temporal puede darse en los céspedes San Agustín, ciempiés y agrostis. No aplique como una niebla fina por los posibles daños a las plantas que no desea eliminar.

VARILLA DE PILAS

RETIRE

- Retire la varilla del sujetador lateral.
- Desenrolle completamente la manguera.
- Quite la tira protectora del compartimento de las pilas para activarlas.



CONECTE

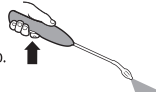
- Inserte el conector al final de la manguera en el pico de la tapa hasta que haga clic.
- Levante el pico.
- El pico debe permanecer levantado mientras esté rociando.

EXTIENDA

- Abra la varilla hasta que quede firmemente asegurada en su lugar.

ROCÍE

- Gire la boquilla de la punta de la varilla a la posición deseada del patrón de rocío.
- Mantenga presionado el gatillo para un rociado continuo.



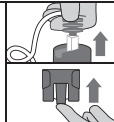
CÓMO APLICARLO

- Siga las ilustraciones e instrucciones anteriores.
- Gire la boquilla de la punta de la varilla a la posición deseada del patrón de rocío.
- Apunte la varilla lejos del cuerpo y mantenga el gatillo oprimido para obtener un rociado continuo.
- Suelte el gatillo para dejar de rociar.
- Apunte al centro de la maleza y rocíe para cubrir ligeramente.

INSTRUCCIONES PARA RELLENAR

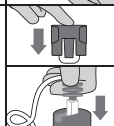
Cómo conectar la varilla al Herbicida para césped WeedClear™ de Ortho® listo para usar₁

Cómo quitar la varilla de la botella original



- Retire la varilla jalando el conector del pico de la tapa.
- En la parte inferior del sujetador lateral, presione la lengüeta de en medio y deslícelo hacia arriba para quitarlo de la botella.

Cómo agregar la varilla al Herbicida para césped WeedClear™ de Ortho® listo para usar₁



- Deslice la funda lateral hacia abajo en la perilla ubicada al lado del contenedor de relleno.
- Inserte el conector en el extremo de la manguera a la boquilla en la tapa hasta que haga clic.

El Herbicida para césped WeedClear™ de Ortho® listo para usar₁ elimina las malezas de hoja ancha del césped enumeradas, hasta la raíz. Elimina las malezas enumeradas, no el césped del jardín, cuando se usa de acuerdo con las instrucciones. Listo para usar. No necesita mezclarse.

ALMACENAMIENTO Y ELIMINACIÓN

No contamine el agua, la comida ni el pienso para animales al almacenar o eliminar el producto. Proteja del congelamiento. Mantenga el pesticida en su envase original. No lo ponga en envases de alimentos o bebidas. Evite contaminar piensos y alimentos. Almacene el producto en un lugar fresco y seco, de preferencia en un lugar bajo llave.

ALMACENAMIENTO DEL PESTICIDA

Baje el pico de la tapa. **NO ES NECESARIO DESCONECTAR LA MANGUERA DEL ROCIADOR DE LA TAPA.** Utilice completamente el producto del rociador antes de almacenarlo. Gire la boquilla del rociador hasta la posición de "OFF" (cerrado). Cierre el dispositivo aplicación Comfort Wand® y vuelva a colocarlo en el gancho lateral.

ELIMINACIÓN DEL PESTICIDA Y MANEJO DEL ENVASE

Este envase no se puede rellenar. No vuelva a usar ni a llenar este envase.
Si está vacío: Tirelo a la basura o, si está disponible, ofrézcalo para reciclaje.
Si está parcialmente lleno: Llame a su agencia de desechos sólidos local para obtener instrucciones sobre cómo eliminar el producto. Nunca elimine el producto no utilizado en drenajes internos o externos.

AVISOS DE PRECAUCIÓN

RIESGOS PARA LOS SERES HUMANOS Y LOS ANIMALES DOMÉSTICOS

PRECAUCIÓN: Es nocivo si se absorbe a través de la piel. Evite el contacto con la piel, los ojos o la ropa. Lávese con abundante agua y jabón después de manipular el producto, y antes de comer, beber, masticar chicle, consumir tabaco o usar el inodoro.

PRIMEROS AUXILIOS

SI CAE EN LA PIEL

- Quite la ropa contaminada.
- Enjuague la piel de inmediato con abundante agua por 15 a 20 minutos.
- Llame a un centro de control de envenenamientos o a un médico para recibir instrucciones de tratamiento.

Tenga el envase o la etiqueta del producto con usted cuando llame al centro de control de envenenamientos o al médico, o al acudir a recibir tratamiento. También puede llamar al 1-877-465-5161 para obtener información sobre tratamiento médico de emergencia.

RIESGOS MEDIOAMBIENTALES

Este pesticida es tóxico para los peces y los invertebrados acuáticos, y puede afectar de manera adversa a las plantas que no se pretende eliminar. Para proteger el medio ambiente, no permita que el pesticida penetre o se escurra en drenajes pluviales, zanjas de desagüe, cunetas o aguas superficiales. La aplicación de este producto en un clima tranquilo, cuando no se pronostiquen lluvias para las próximas 24 horas, asegurará que ni el viento ni la lluvia arrastren o laven el pesticida fuera del área de tratamiento.

Este producto químico tiene propiedades y características que se relacionan con sustancias químicas detectadas en aguas del subsuelo. El uso de este producto químico en áreas donde la tierra es permeable, en particular donde el manto freático está cerca de la superficie, puede acarrear la contaminación del agua del subsuelo. La aplicación alrededor de una cisterna o pozo puede ocasionar la contaminación del agua para beber o de la del subsuelo.

ADVERTENCIA: En la medida contemplada por las leyes aplicables, el comprador asume todos los riesgos derivados del uso, el almacenamiento o el manejo de este producto si no se siguen las instrucciones de la etiqueta.



Si por alguna razón usted, el consumidor, no está satisfecho con este producto, envíenos por correo el comprobante de compra original para recibir un reembolso completo de su precio de compra.



WEEDCLEAR™

LAWN WEED KILLER
READY-TO-USE₁

PRODUCT FACTS

Results in Hours

Kills major listed broadleaf weeds including dandelion, clover, oxalis, chickweed, knotweed, plantain, henbit, spurge and many others.



WHERE TO USE:



Ortho® WeedClear™ Lawn Weed Killer Ready-to-Use₁ is intended for use only on residential lawns, including: bahiagrass, bentgrass, bermudagrass (hybrid and common), buffalograss, centipedegrass, fescue, Kentucky bluegrass, perennial ryegrass, St. Augustinegrass (except 'Floratum') and zoysiagrass without harming lawn grasses when used as directed.

Do not allow people or pets to enter the treated area until spray has dried.

Questions & Comments
Call 1-800-225-2883
or ortho.com

Stop! Read the entire label first. Observe all precautions and follow directions carefully.

FPO



If for any reason you, the consumer, are not satisfied with this product, mail us your original proof of purchase to obtain a full refund of your purchase price.

0 71549 04488 6
0505

©2019 The ORTHO Group.
World rights reserved.

Sold by The ORTHO Group,
PO Box 190, Marysville, OH 43040

EPA Reg. No. 2217-905-239
EPA Est. No. 239-1A-3



LB13869