

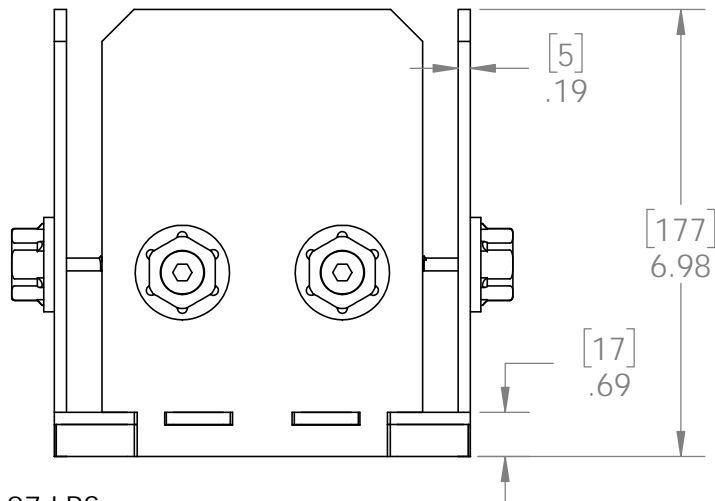
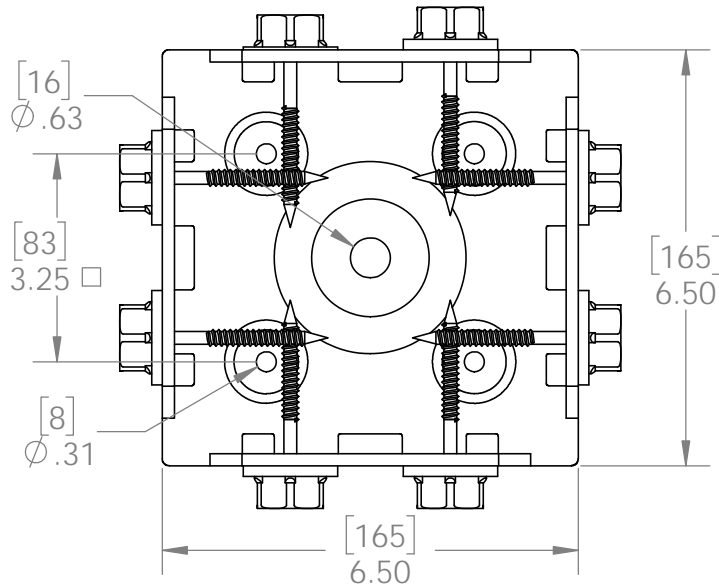


OZCO BUILDING PRODUCTS

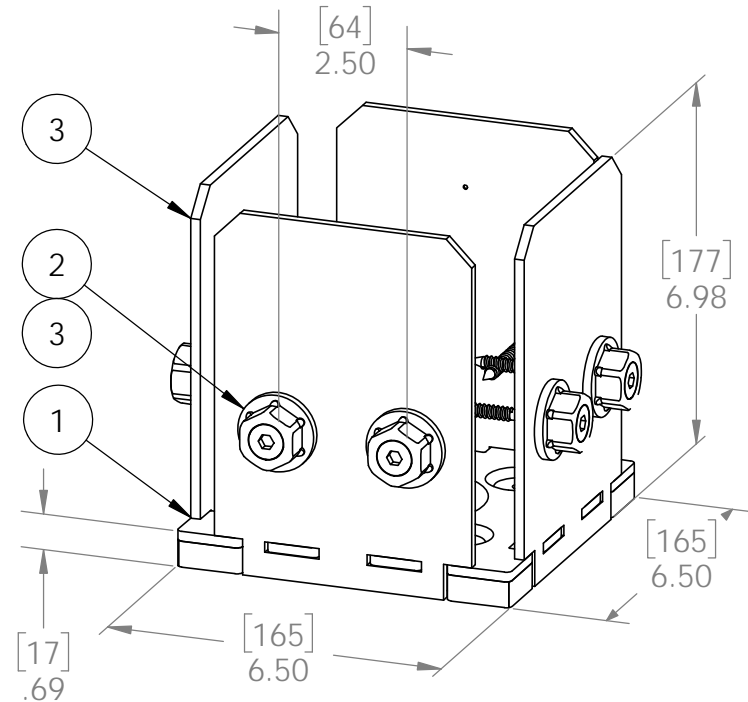
Product & Packaging Specs

6x6 Post Base (6x6-PB-IW)

Item #: 51708



ITEM NO.	QTY.	PART NUMBER	DESCRIPTION
1	1	56608-11	Assembly, 6x6 Stand Off
2	0.8	56621	1 1/2" Hex Cap Nut (HCN)
3	4	51708-15	Plate, 6x6 Side Compression
4	0.32	56626	OWT Timber Screw 2-3/4"



Weight: 9.87 LBS
Scale: 1:3
Last updated: 10/10/2016

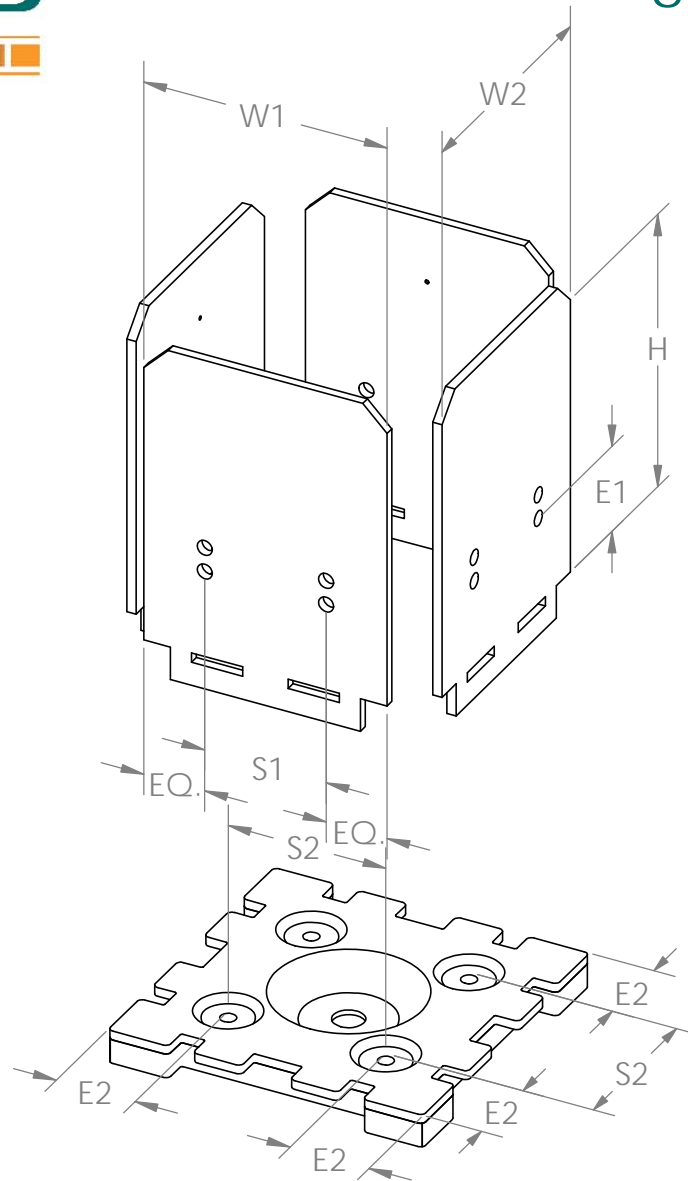
51708

V2.00 - Installation Instructions, Specifications and Project Plans are effective 10/10/2016. This information is updated periodically and should not be relied upon after 2 years from 10/10/2016. Please visit OZCOBP.com to get current information.

Product & Packaging Specs

6x6 Post Base (6x6-PB-IW)

Item #: 51708



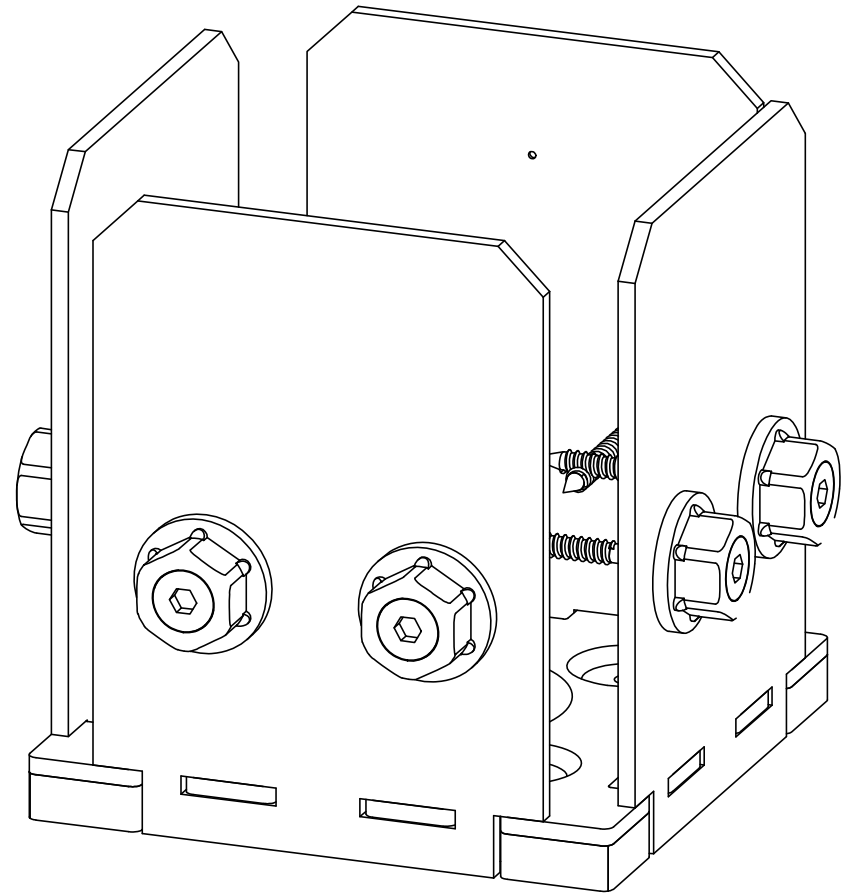
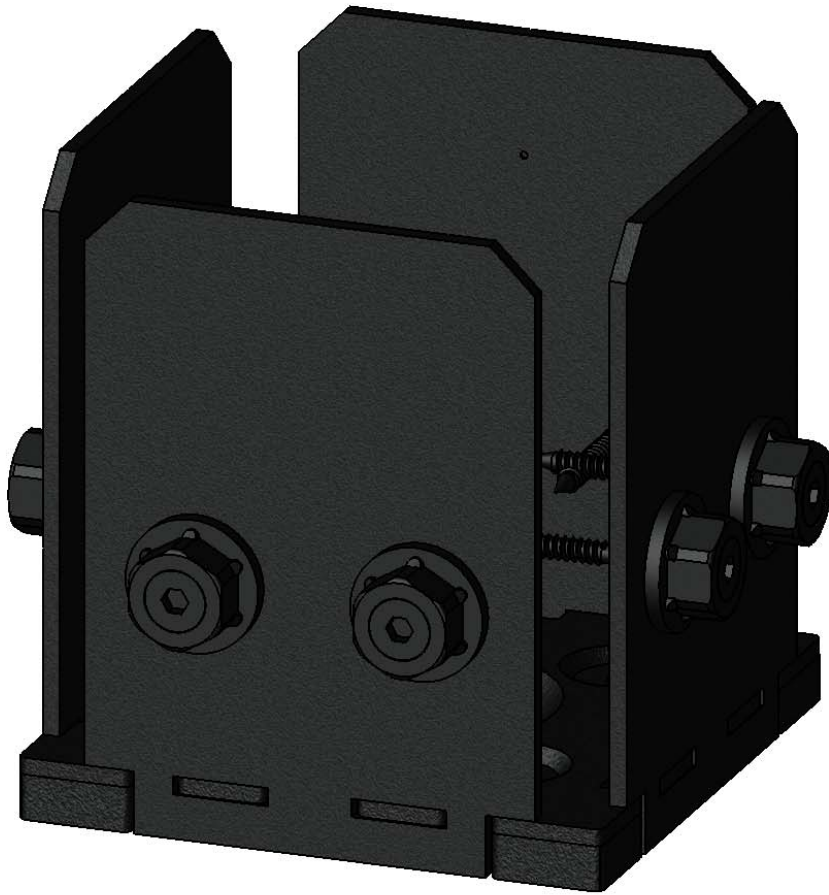
Weight: 9.38 LBS
Scale: 1:2
Last updated: 10/10/2016

51708

Product & Packaging Specs

6x6 Post Base (6x6-PB-IW)

Item #: 51708



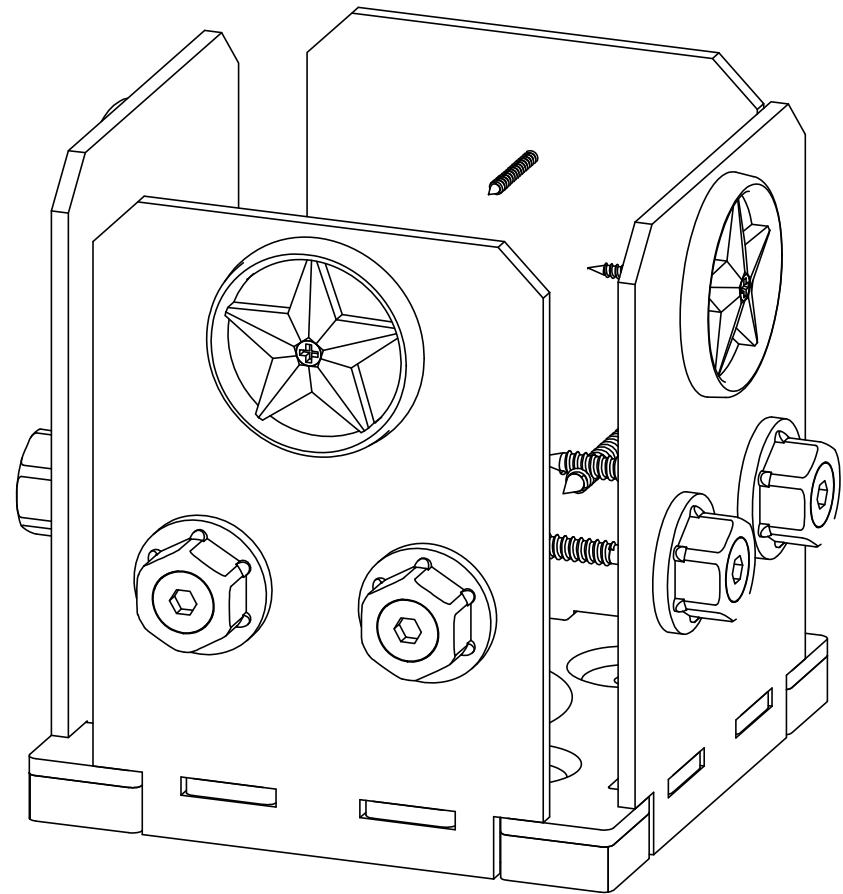
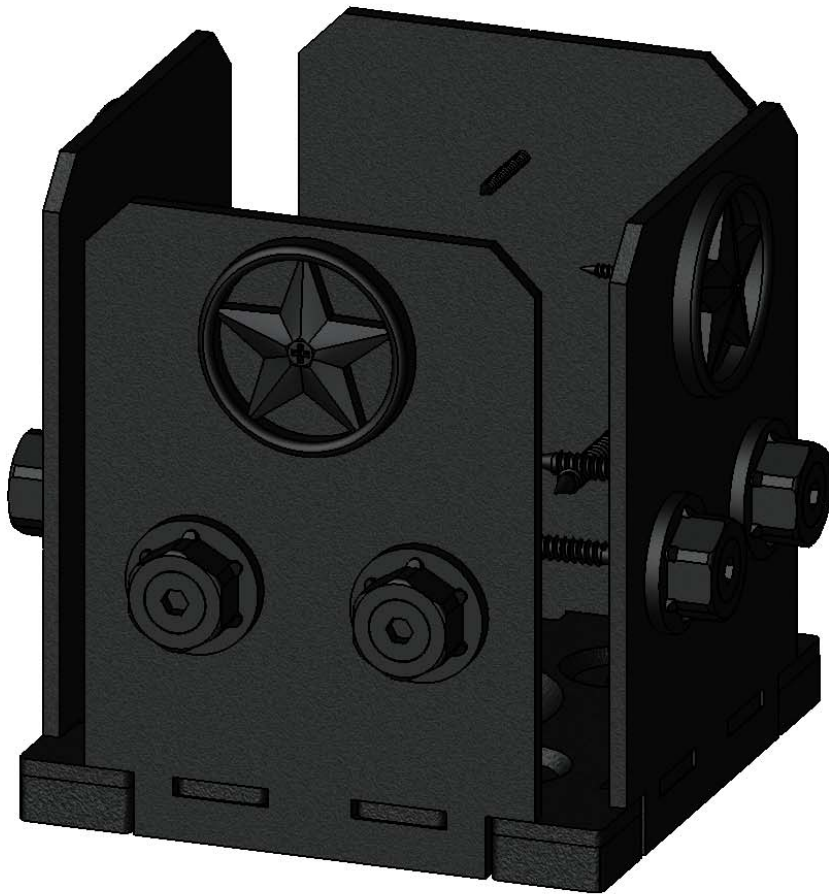
Weight: 9.38 LBS
Scale: 1:2
Last updated: 10/10/2016

51708

Product & Packaging Specs

6x6 Post Base (6x6-PB-IW)

Item #: 51708



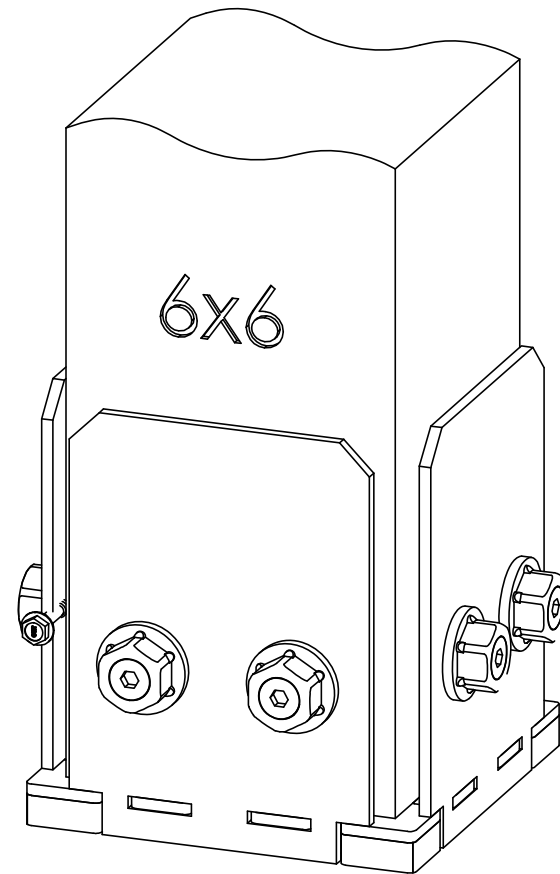
Weight: 9.38 LBS
Scale: 1:2
Last updated: 10/10/2016

51708

Product & Packaging Specs

6x6 Post Base (6x6-PB-IW)

Item #: 51708



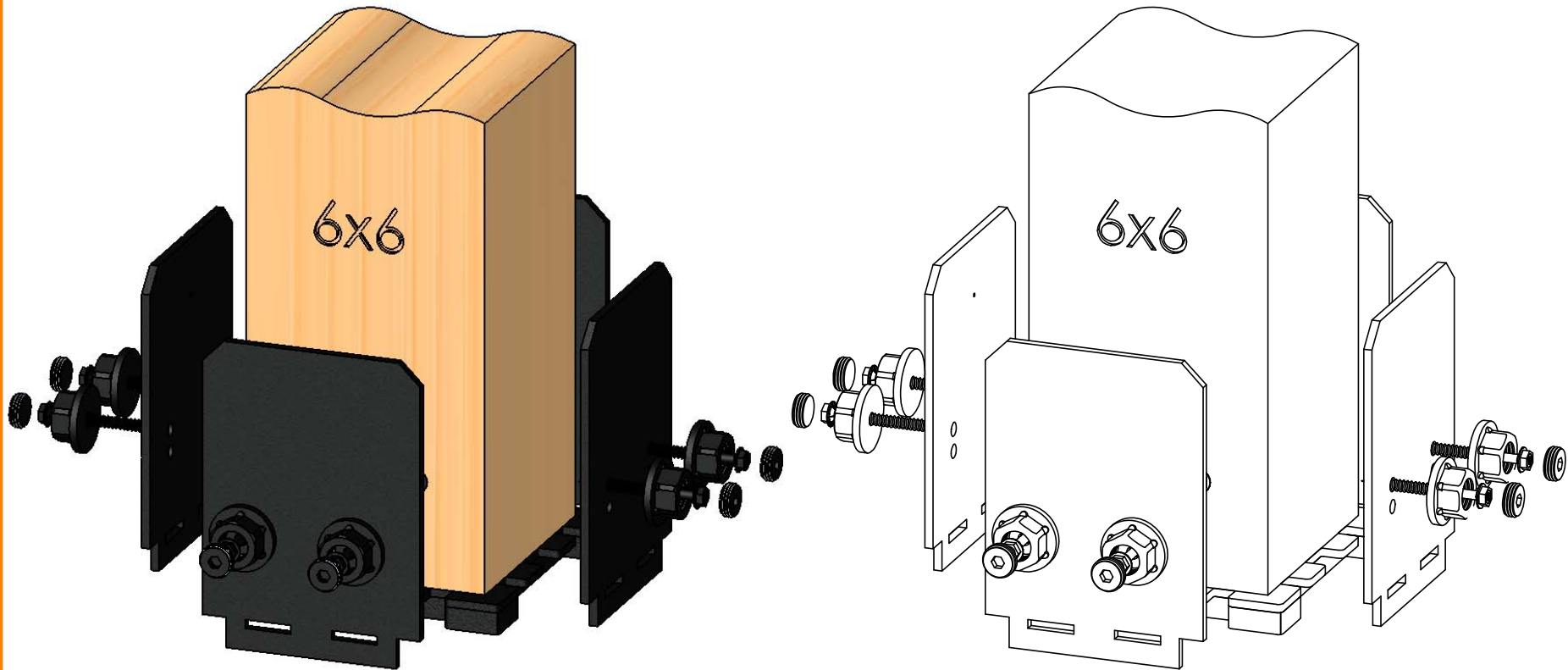
Weight: 9.38 LBS
Scale: 1:3
Last updated: 10/10/2016

51708

Product & Packaging Specs

6x6 Post Base (6x6-PB-IW)

Item #: 51708



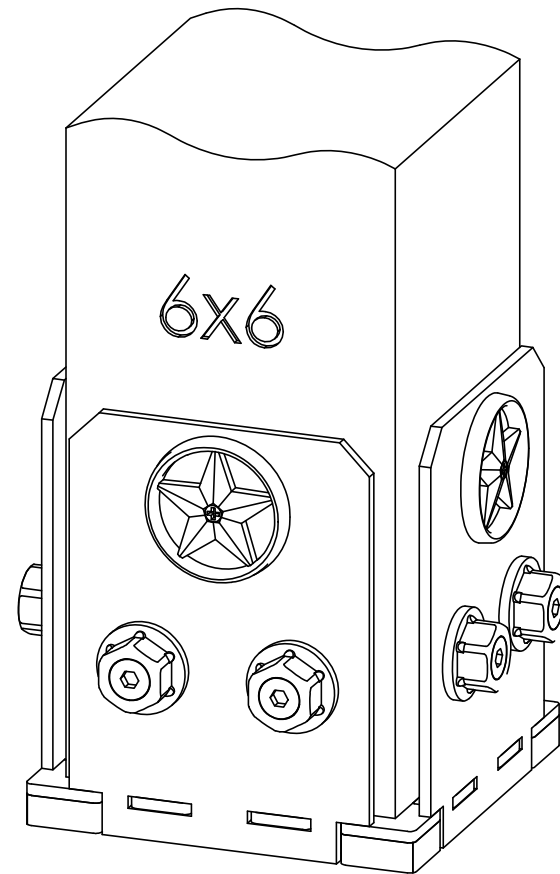
Weight: 9.38 LBS
Scale: 1:3.5
Last updated: 10/10/2016

51708

Product & Packaging Specs

6x6 Post Base (6x6-PB-IW)

Item #: 51708



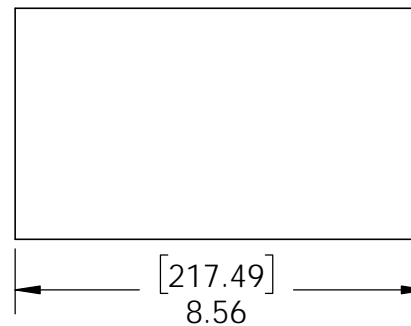
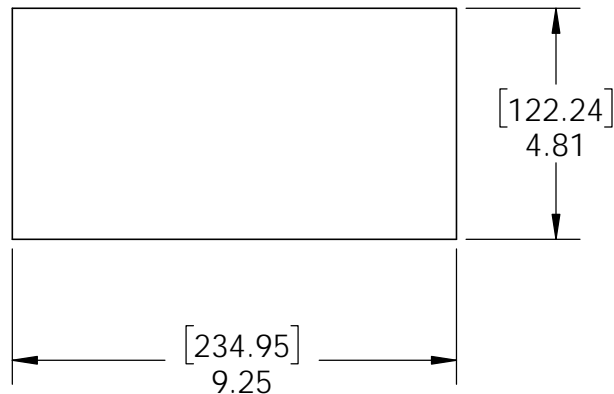
Weight: 9.38 LBS
Scale: 1:3
Last updated: 10/10/2016

51708

Product & Packaging Specs

Box, 51708

Item #: Box



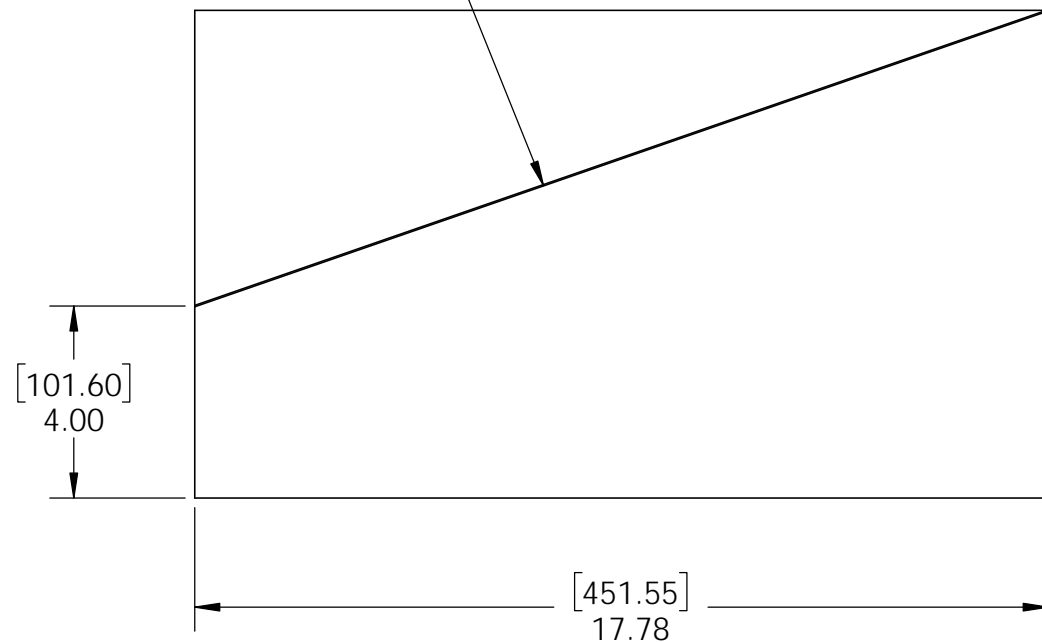
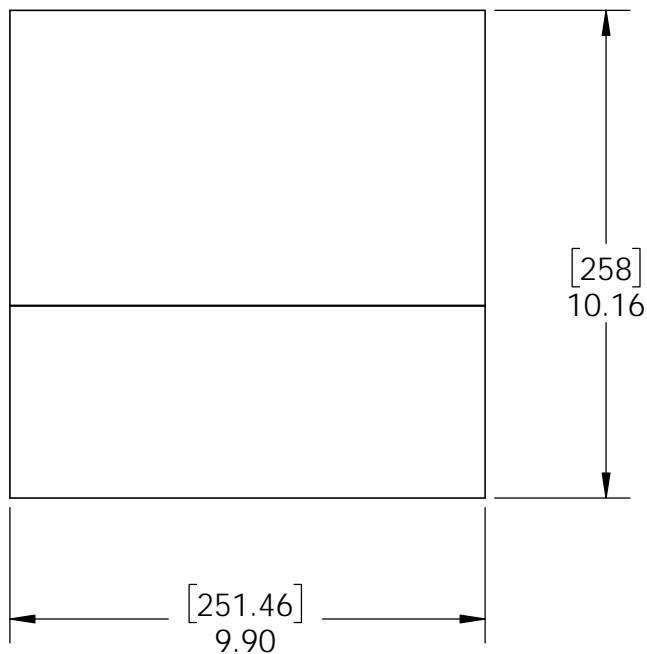
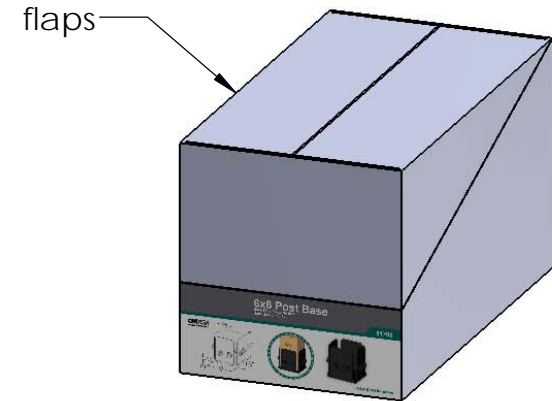
Material: Corrugated Paper
Finish: See Artwork
Weight: 0.14 LBS
Scale: 1:4
Last updated: 10/10/2016

51708

Product & Packaging Specs

Case, 51708

Item #: Case



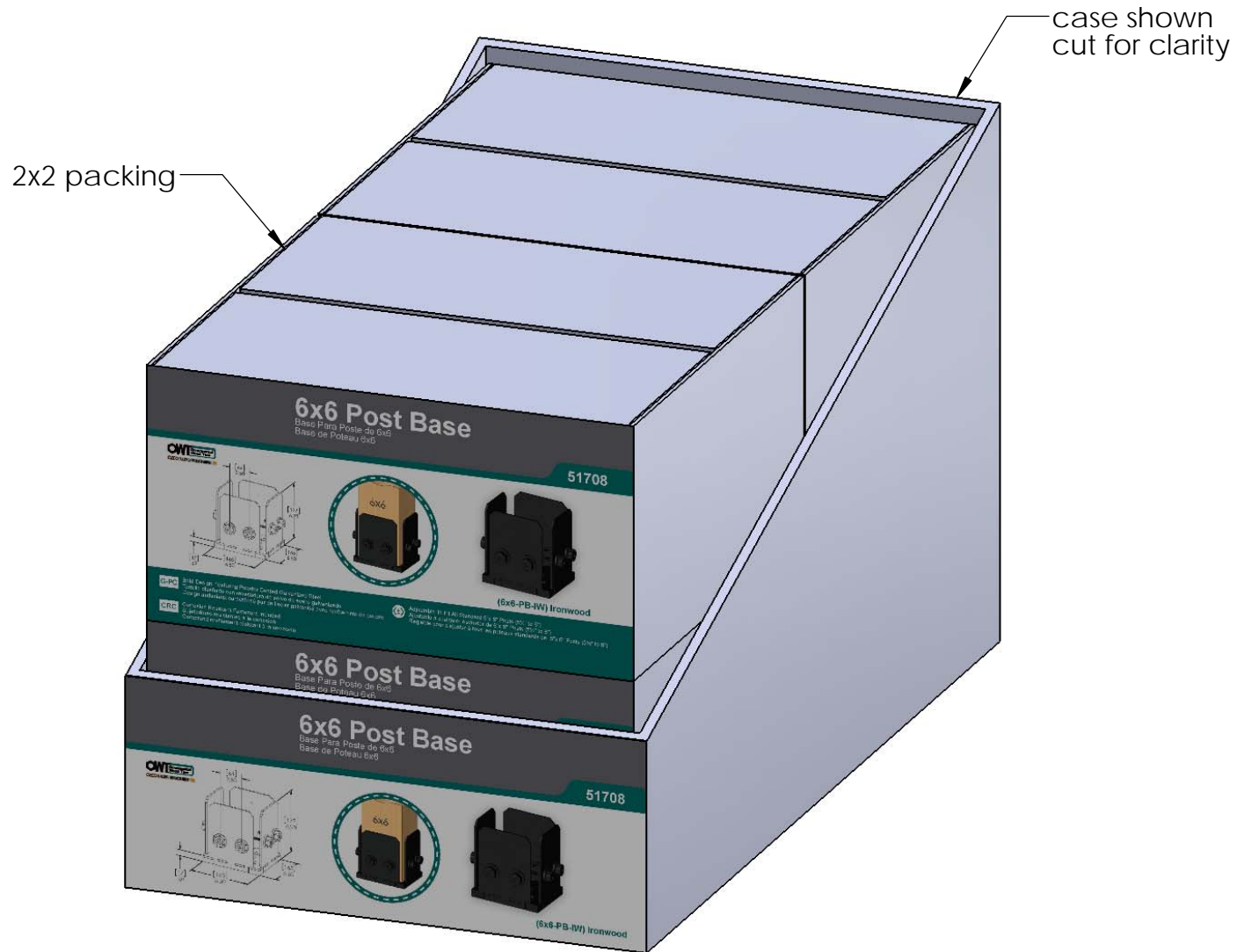
Weight: 0.99 LBS
Scale: 1:4
Last updated: 10/10/2016

51708

Product & Packaging Specs

51708 Packing

Item #: Case packing



Weight: 41.44 LBS
Scale: 1:3
Last updated: 10/10/2016

51708

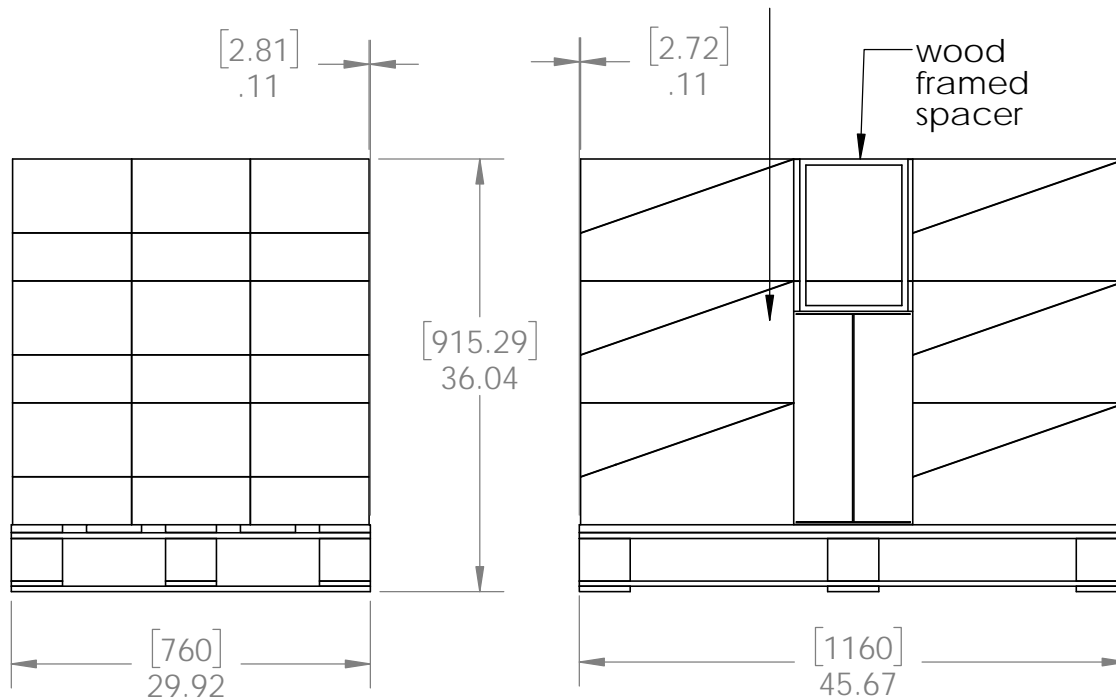
Product & Packaging Specs

51708 Packing

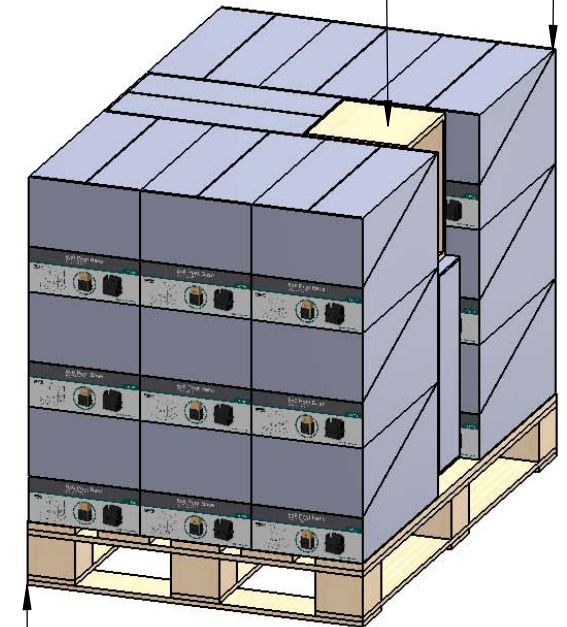
Item #: Pallet packing

Total number of cases: 22
Total number of pieces:
22x4=88 pieces on pallet

ADD PALLET LABEL



wood framed spacer



A pallet



additional pallet packing instructions
plywood on top layer
strap to pallet
clear wrap around boxes

Weight: 938 LBS
Scale: 1:16
Last updated: 10/10/2016

51708

V2.00 - Installation Instructions, Specifications and Project Plans are effective 10/10/2016. This information is updated periodically and should not be relied upon after 2 years from 10/10/2016. Please visit OZCOBP.com to get current information.