

Installation Instructions, 1/2" OWT Thru-Bolt Timber Fasteners

Optimum Size Selection Table	
width range	Timber Bolt
1.5-4"	56694
4.25-6"	56695
6.25-8"	56696
8.25-10"	56697
10.25-12"	56698

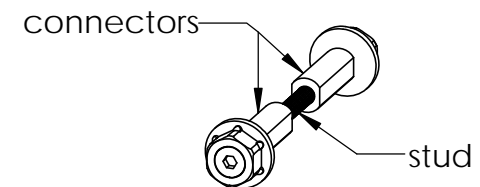
- Timber Bolts are usable .25" past documented range, however use table for best selection
- Recommended MAX tightening torque: 5in/lbs
- Width range tolerance: +.25"/-.0
- Timber Bolts with 2 connectors: custom widths are possible when eliminating 1 connector & stud

How does it work?

- tightens from the inside
- excess threads are concealed
- no exposed dangerous edges
- 5 width ranges to choose from

Timber Bolts may be installed as a standalone fastener or with many OZCO connector options

for heavier duty applications,
see 3/4" OWT Thru-Bolt Timber Fasteners

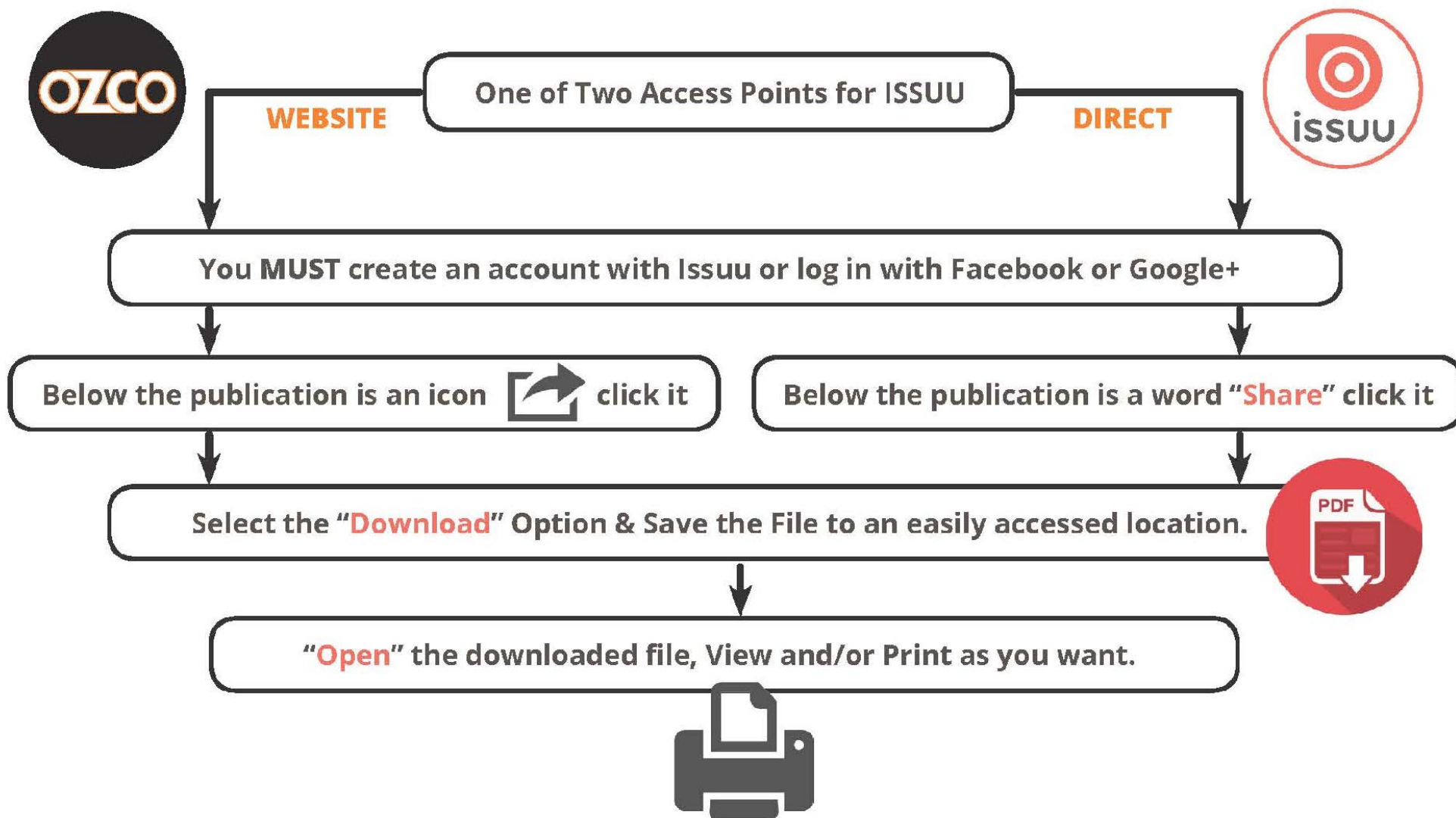


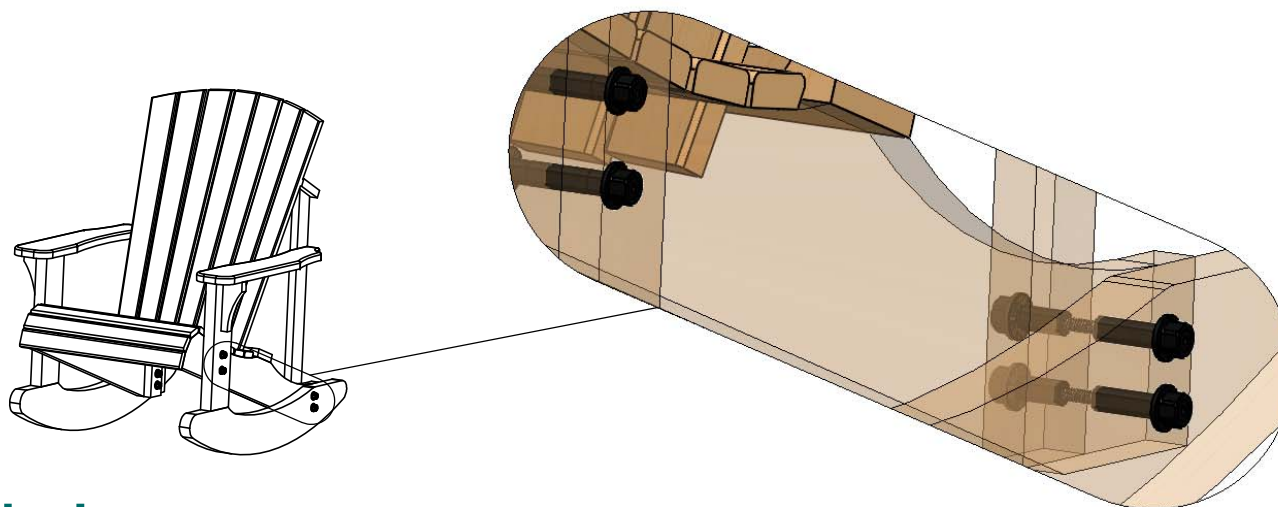
OZCO BUILDING PRODUCTS



Printing Documents from ISSUU

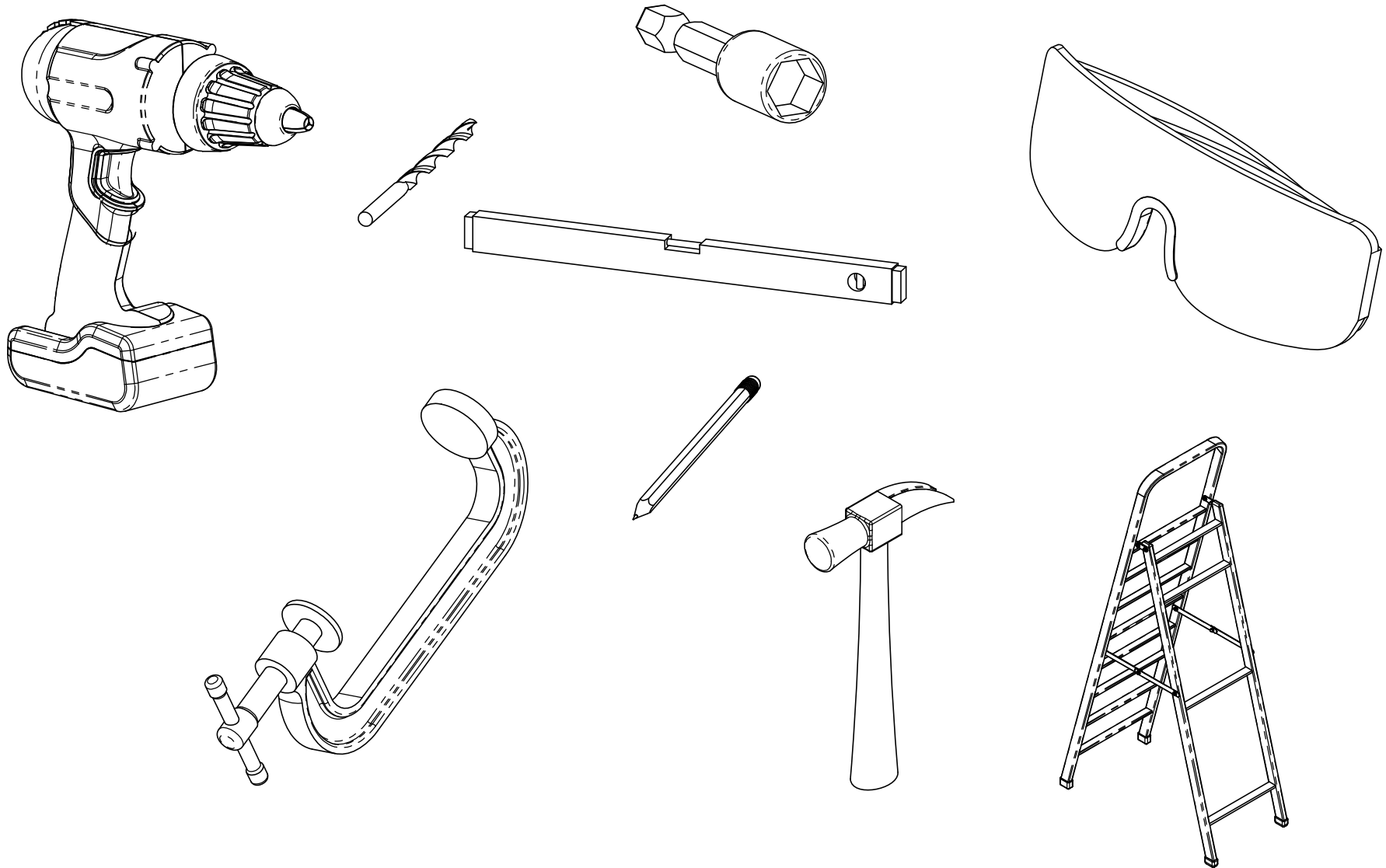
Unfortunately, there is currently no way to print content directly through issuu. To print a publication, you will need to download it and print it from your computer.





Application Idea's...

Installation Instructions, .50 OWT Thru-Bolt
Timber Fasteners

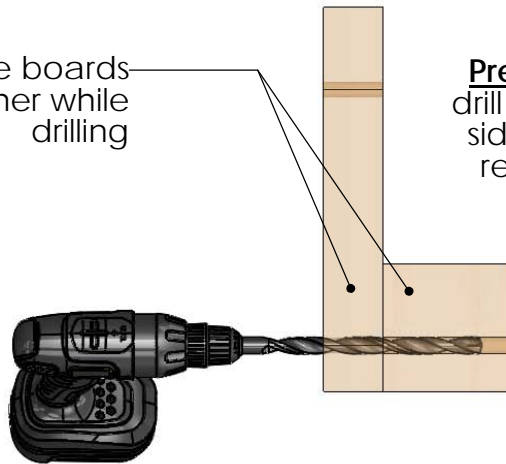


Suggested Tools

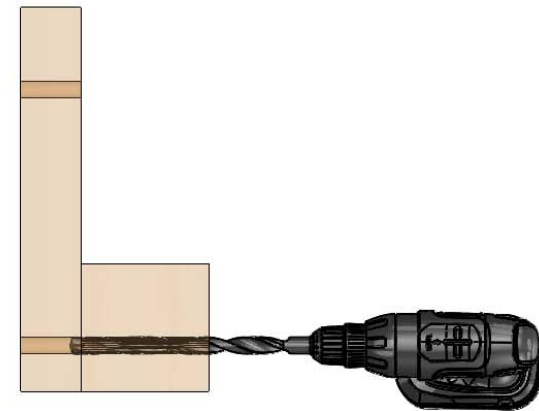
(others may be required)

Installation Instructions, .50 OWT Thru-Bolt
Timber Fasteners

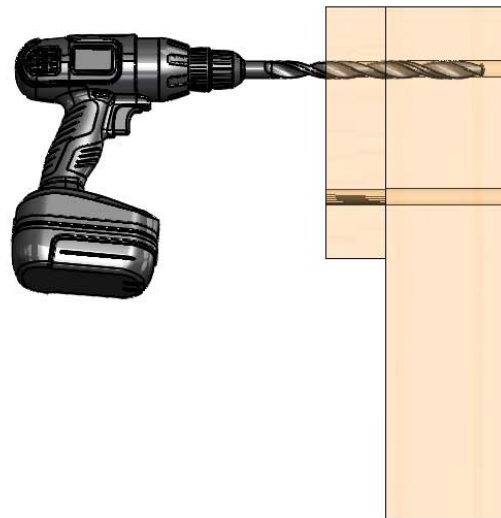
secure boards
together while
drilling



Prevent Unsightly Breakouts
drill most of the way from one
side DO NOT breakout then
repeat from opposite side

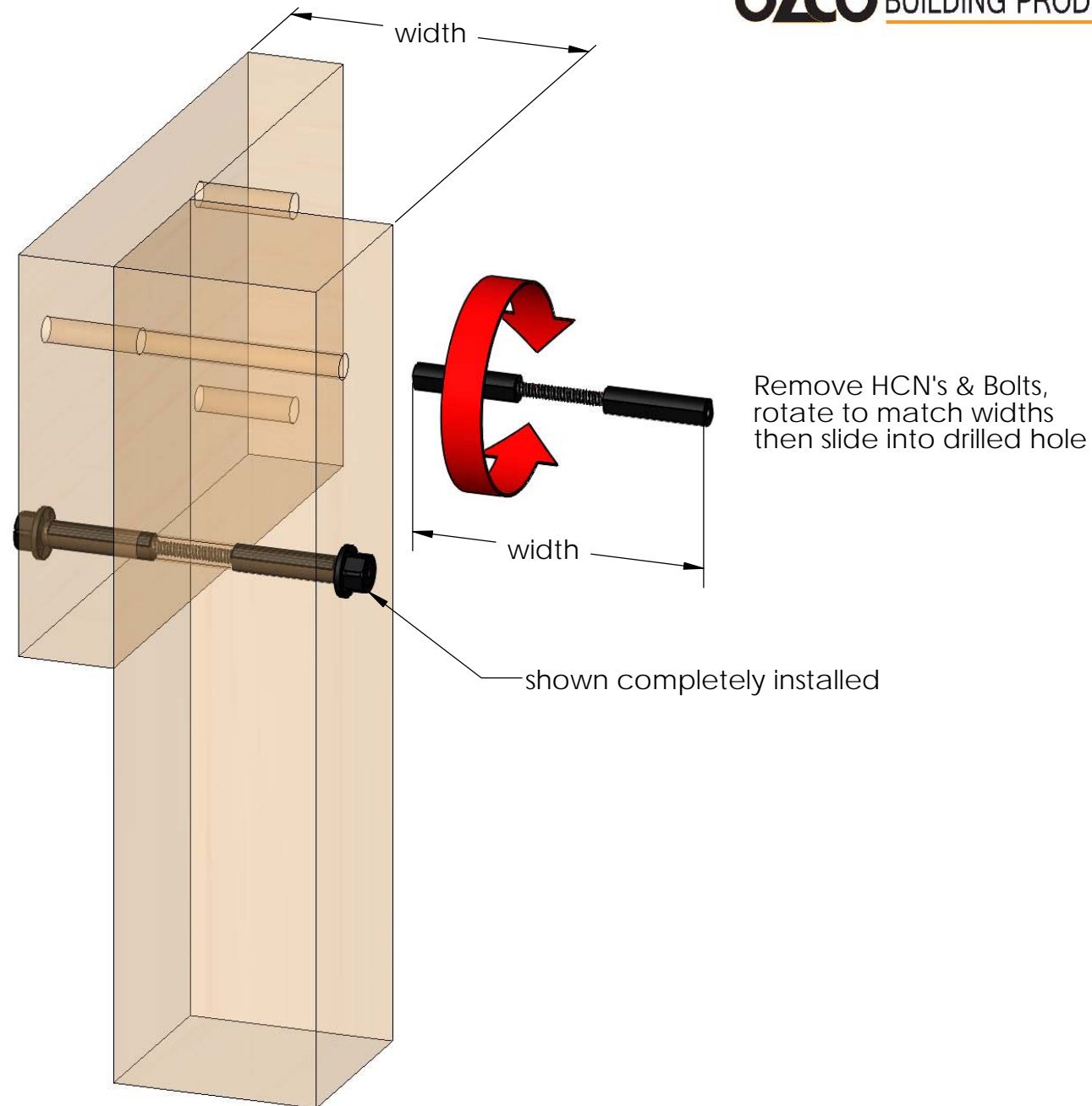


Drill $\phi 1/2"$ hole(s) as level as possible to ensure
straight path to align with hole from opposite side



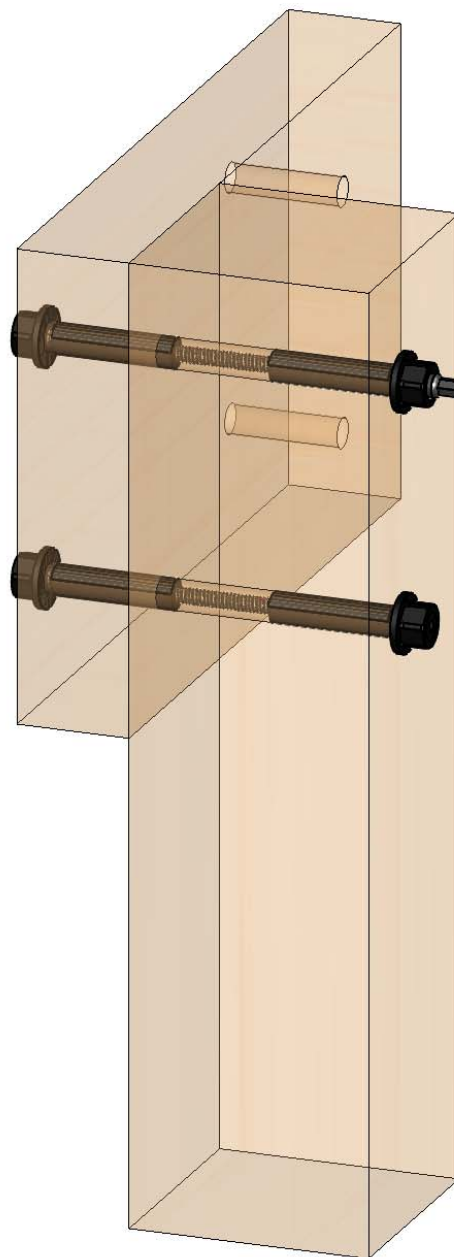
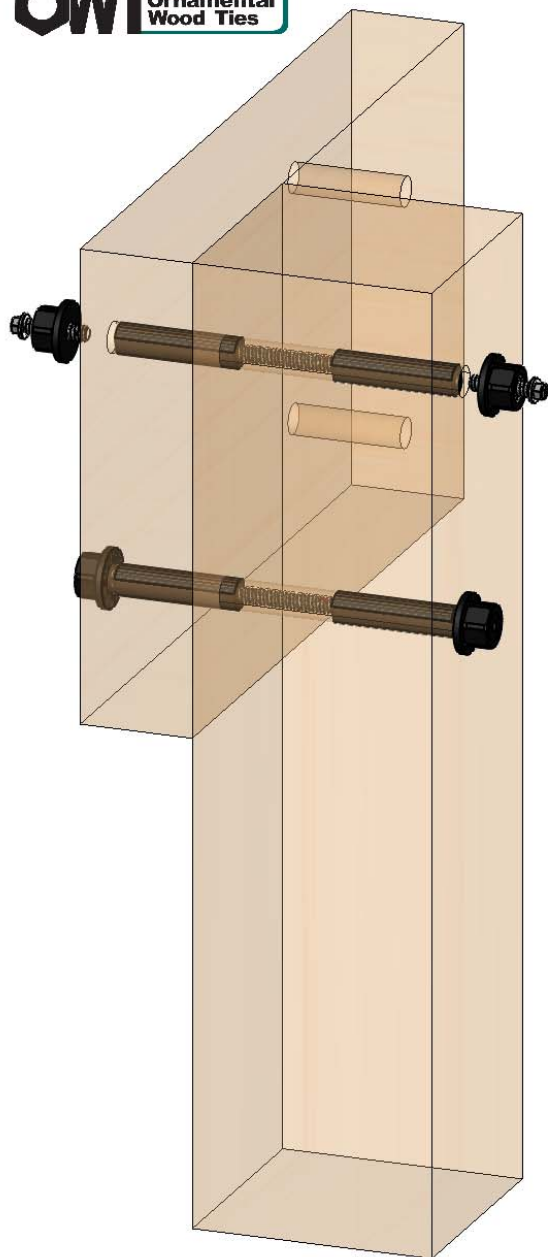
step 1 & 2

Installation Instructions, .50 OWT Thru-Bolt
Timber Fasteners

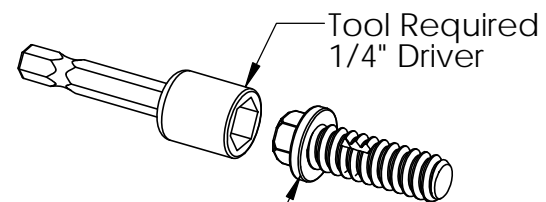


step 3

Installation Instructions, .50 OWT Thru-Bolt
Timber Fasteners



see torque
spec on
page 1

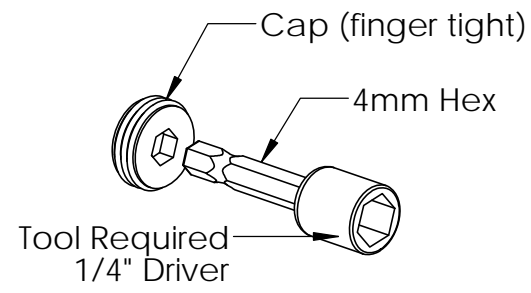
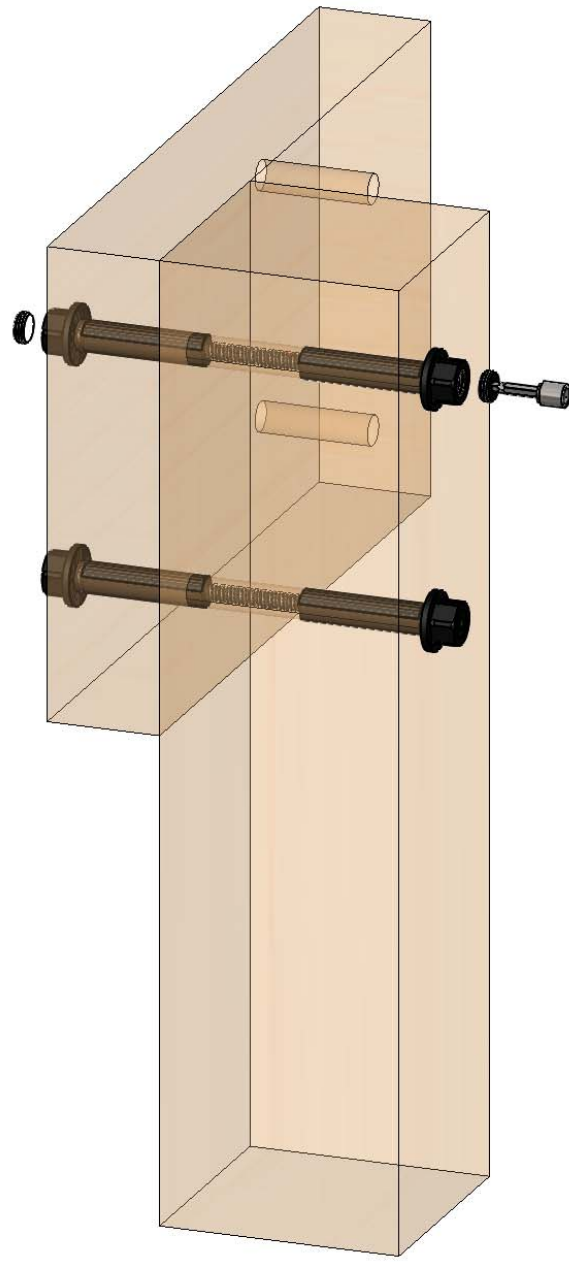


(Small Timber Bolt)

see torque spec on page 1

step 4 & 5

Installation Instructions, .50 OWT Thru-Bolt
Timber Fasteners



step 6

Installation Instructions, .50 OWT Thru-Bolt
Timber Fasteners