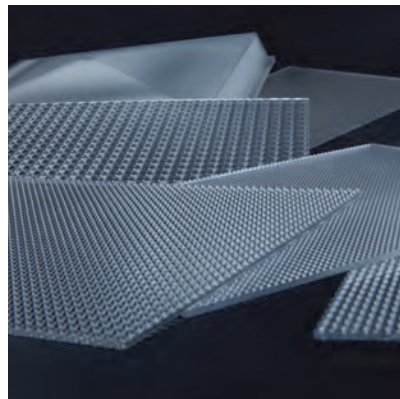
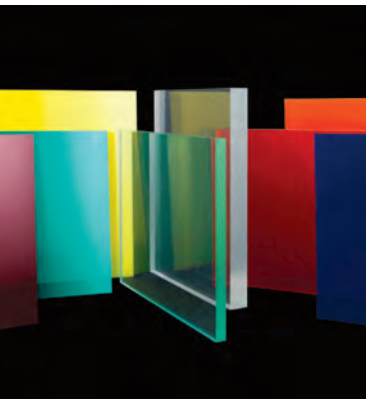


# PLASKOLITE

## Product Guide



OPTIX® Acrylic Sheet

DURAPLEX® Impact Modified Acrylic Sheet

VIVAK® PETG Sheet

ABS Sheet

Roll Stock Sign Grade Acrylic Sheet

OPTIX® LD Light Diffusing Sheet

Colored Acrylic Sheet

Patterned Acrylic Sheet

Picture Frame Glazing Sheet

FABBACK® Extruded Mirror Sheet

Colored Mirror Acrylic Sheet

Marine Grade Acrylic Mirror Sheet

Aircraft Grade Polycarbonate Mirror Sheet

See-Thru Mirror Sheet

First-Surface Mirror Sheet

ARmadillo Scratch-Resistant Coatings

PETG Mirror Sheet

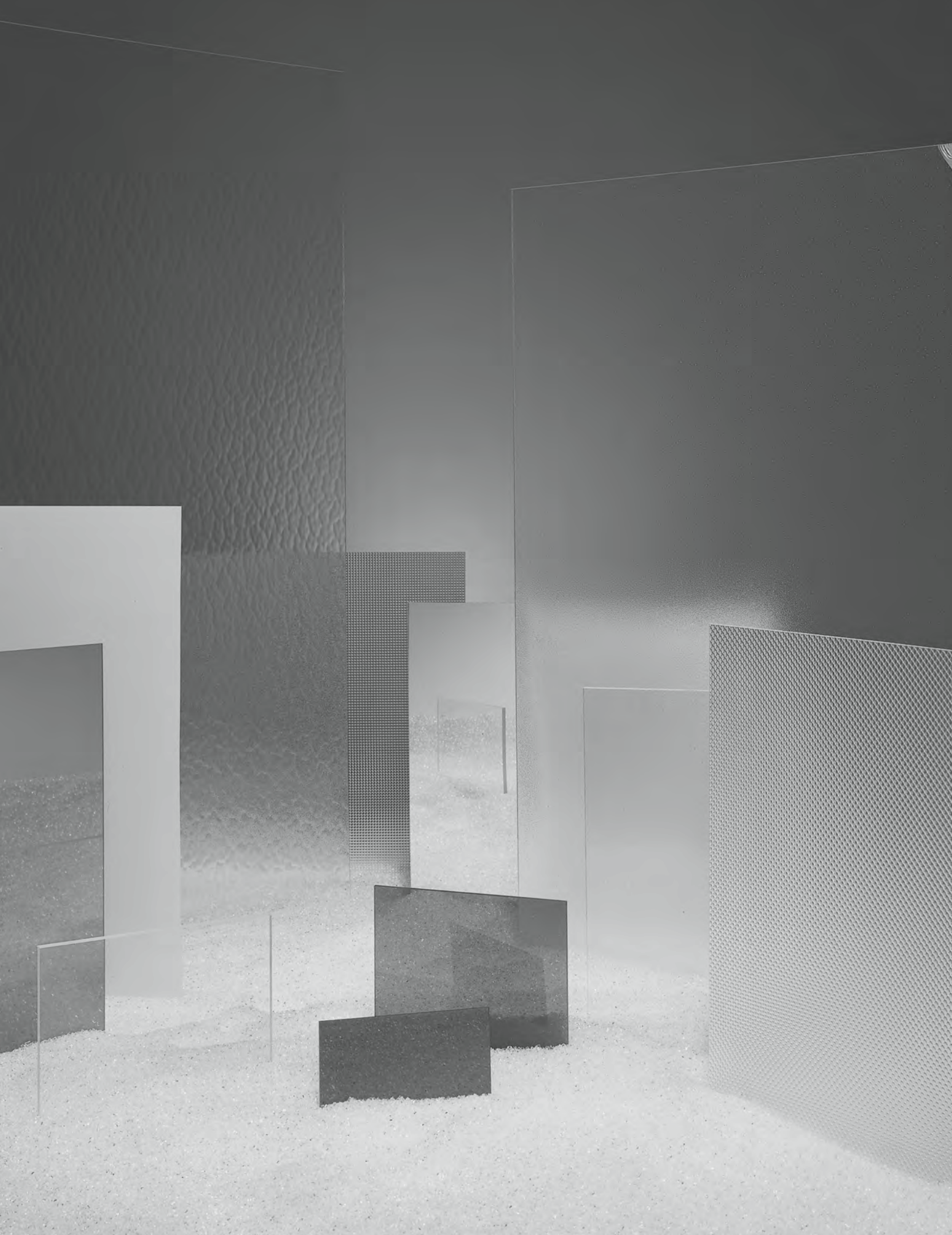
Polycarbonate Mirror Sheet

KSH® Lighting Lens Series

Complete Product And Packaging Specifications Inside

[www.plaskolite.com](http://www.plaskolite.com)

1-800-848-9124



# CONTENTS

**Welcome to the Plaskolite Product Guide. In it you will find all the information you need to specify, order and stock Plaskolite’s complete line of acrylic, ABS, PETG and thermoplastic mirror sheet products. For additional information, or to discuss your order with an Inside Sales representative, call Plaskolite at 1-800-848-9124.**

|   |    |
|---|----|
| The Plaskolite Quality Commitment .....               | 2  |
| OPTIX® Acrylic Sheet Properties .....                 | 3  |
| OPTIX® Acrylic Flat Sheet .....                       | 5  |
| OPTIX® DA Digital Acrylic Sheet.....                  | 9  |
| Run-to-Size Program.....                              | 10 |
| DURAPLEX® Impact Modified Acrylic Flat Sheet.....     | 11 |
| Sign Grade Roll Stock & Flat Acrylic Sheet .....      | 13 |
| OPTIX® LD Light Diffusing Acrylic Sheet .....         | 15 |
| OPTIX® Colored Acrylic Flat Sheet.....                | 16 |
| OPTIX® Frost/OPTIX® 95 .....                          | 18 |
| OPTIX® Patterned Non-Glare Acrylic Flat Sheet .....   | 19 |
| Picture Frame Glazing Sheet.....                      | 20 |
| Patterned Acrylic Sheet.....                          | 21 |
| VIVAK® PETG.....                                      | 22 |
| ABS Sheet .....                                       | 23 |
| Lighting Sheet .....                                  | 24 |
| KSH® Lighting Lens Series.....                        | 26 |
| FABBACK® Extruded Mirror Clear Acrylic Sheet.....     | 30 |
| FABBACK® Extruded Mirror Color Acrylic Sheet .....    | 32 |
| Marine Grade Acrylic Mirror Sheet .....               | 33 |
| Aircraft Grade Polycarbonate Mirror Sheet .....       | 33 |
| See-Thru Mirror Sheet .....                           | 33 |
| First Surface (2 Sided) Mirror Sheet .....            | 34 |
| Textured Acrylic Mirror Sheet .....                   | 34 |
| ARmadillo Scratch Resistant Coating .....             | 35 |
| PETG Mirror Sheet.....                                | 36 |
| Polycarbonate Mirror Sheet.....                       | 37 |
| Protective Coverings & Backings For Mirror Sheet..... | 38 |
| Plaskolite, LLC. Limited Warranty.....                | 39 |
| Plaskolite, LLC. Terms & Conditions.....              | 40 |

# QUALITY COMMITMENT

## The Plaskolite Quality Commitment

Plaskolite is a leading manufacturer of acrylic sheet, impact modified acrylic sheet, acrylic resin, polystyrene sheet and acrylic mirror sheet. Since 1950, it has built an excellent reputation for providing high quality products and responsive customer service.

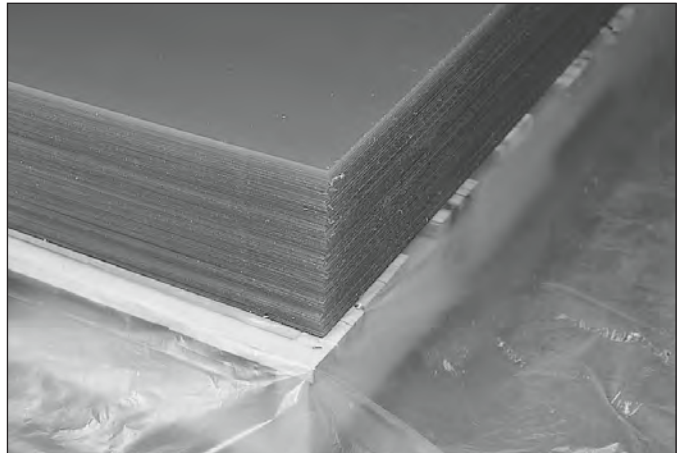
Plaskolite's commitment to quality extends over every aspect of its business. From its 350,000 sq. ft. manufacturing and distribution headquarters in Columbus, Ohio, and its 245,000 sq. ft. manufacturing facility in Zanesville, Ohio, Plaskolite delivers flawless quality sheet and resin to customers worldwide. ISO 9001:2008 quality standards are maintained throughout, including a fully integrated manufacturing system that converts acrylic monomer into acrylic resin and then into acrylic sheet.

To better serve customers, sheet can be ordered in customized **"Run-to-Size"** dimensions and special patterns and thicknesses. Inside sales representatives use automated order and shipping tracking systems to provide customers with up-to-the-minute information on their orders.

From manufacturing through customized product offerings, packing, shipping and order tracking, Plaskolite is committed to delivering the highest quality products and service to its customers.

### Plaskolite's acrylic sheets are covered under the following:

- International Code Council Evaluation Service (ICC-ES) listings (incorporates former ICBO, SBCCI, BOCA and NES certifications) as CC2 Plastics
- ANSI Z97.1 Safety Glazing Requirements
- ANSI Z26.1 Motor Vehicle Safety Glazing Standard
- Underwriters Laboratories (UL) listings UL 94HB
- Miami-Dade County Product Control Notice of Acceptance – Clear Plastics
- 10-year limited warranty on all clear acrylic sheets
- ASTM D-4802 - B-1 Plastics



# ACRYLIC SHEET PROPERTIES

## OPTIX® Acrylic Sheet Properties

OPTIX is the tradename for Plaskolite's continuously processed, high quality acrylic sheet. OPTIX acrylic sheet is ideal for almost any fabrication or glazing application. OPTIX exceeds industry standards for quality and safety and its impact-resistance will prohibit the sheet from shattering into sharp edged pieces like glass. Special U.V. stabilization protects the sheet from yellowing and it's backed by a ten year limited warranty. Primary applications for OPTIX include fabrication, picture framing, skylights, displays, signage, lighting and point of purchase.

OPTIX acrylic is available in colored, impact modified, green edged and patterned sheet. For fabricating convenience, OPTIX Acrylic Sheet can be ordered in custom sizes and thicknesses using Plaskolite's "Run-to-Size" program. For more information on OPTIX Acrylic Sheet, call 1-800-848-9124.

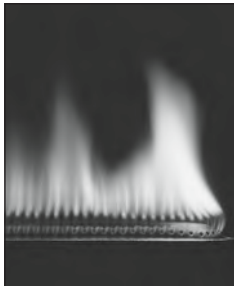
### Physical Properties

OPTIX acrylic sheet is crystal clear, durable, weather-resistant and lightweight for easy transport and storage. It also offers the advantages of high molecular weight for ease of fabrication, low heat loss for economy and an attractive clear edge color.

OPTIX acrylic sheet is available in a variety of colors, non-glare, patterned, translucent and transparent colors. It is produced in thicknesses ranging from .040" to 1.0" and sheet widths up to 105".

### Safety Concerns

OPTIX acrylic sheet is a combustible thermoplastic. Acrylic sheet will ignite and burn if placed in an open flame or in contact with any other source of ignition. When working or storing OPTIX acrylic sheet, please be aware of the thermoplastic properties and take into consideration fire precautions.



### Sheet Tolerances (on line)

OPTIX acrylic sheet is produced to tolerances of  $\pm 1/16$ " length and width on sizes 42" and smaller. Sheet sizes greater than 42" up to 60" are produced to length and width tolerances of  $\pm 3/32$ ". All sheet sizes greater than 60" produced to length and width tolerances of  $\pm 1/8$ " (-0, +1/4 on 48" x 96" stock sizes and above).

### Sheet Squareness (on line)

OPTIX acrylic sheet is produced to squareness tolerances of  $\pm 1/8$ " on sizes 42" and smaller. Sheet sizes greater than 42" to 60" squareness is  $\pm 3/16$ " and sheet sizes greater than 60" squareness is  $\pm 1/4$ ".

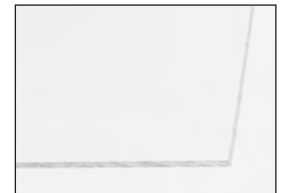


### Sheet Thickness

OPTIX acrylic sheet is produced within industry standards of  $\pm 10\%$  on thickness. Minimum thicknesses available. Call for quotation and production minimums.

### Run-to-Size Sheet

Custom sizes, thicknesses, colors, masking and packaging are available upon request. Call for price quotation, production minimums and delivery information.



### Sheet Edges

Edges are supplied slit, hot sheered and saw cut.

### Sheet Masking

OPTIX acrylic is stocked with a 2mil Co-Ex masking, on two sides. Papermasking, TG paper replacement and 3mil formable film options are available upon request.

# ACRYLIC SHEET



## OPTIX® Acrylic Sheet Properties

| Physical Properties      | ASTM Test Method | Units       | Values |
|--------------------------|------------------|-------------|--------|
| Specific Gravity         | D-792            |             | 1.19   |
| Optical Refractive Index | D-542            |             | 1.49   |
| Light Transmittance      | D-1003           |             |        |
| Total                    |                  | %           | 92     |
| Haze                     |                  | %           | 2      |
| Sound Transmission       | E 90<br>E 413    | db          | 27     |
| Water Absorption         | D-570            | % By Weight | 0.40   |

| Mechanical                          | ASTM Test Method | Units                 | Values  |
|-------------------------------------|------------------|-----------------------|---------|
| Tensile Strength - Max.             | D-638            | psi                   | 11,030  |
| Tensile Elongation - Max.           |                  | %                     | 5.8     |
| Tensile Modulus of Elasticity       |                  | psi                   | 490,000 |
| Flexural Strength - Max.            | D-790            | psi                   | 17,000  |
| Flexural Modulus of Elasticity      |                  | psi                   | 490,000 |
| Izod Impact Strength - Molded Notch | D-256            | ft-lb/in Notch        | 0.4     |
| Izod Impact Strength - Milled Notch |                  | ft-lb/in Notch        | 0.28    |
| Tensile Impact Strength             | D-1822           | ft-lb/in <sup>2</sup> | 20      |
| Abrasion Resistance Change in Haze  | D-1044           |                       |         |
| 0 cycles                            |                  | Haze, %               | 0       |
| 10 cycles                           |                  | Haze, %               | 11.2    |
| 50 cycles                           |                  | Haze, %               | 24.0    |
| 200 cycles                          |                  | Haze, %               | 24.9    |
| Rockwell Hardness                   | D-785            |                       | M-95    |

| Thermal  | ASTM Test Method | Units                           | Values  |
|--|------------------|---------------------------------|---------|
| Maximum Recommended Continuous Service Temperature |                  | °F                              | 170-190 |
| Softening Temperature                              |                  | °F                              | 210-220 |
| Melting Temperature                                |                  | °F                              | 300-315 |
| Deflection Temperature 264 psi                     | D-648            | °F                              | 203     |
| 66 psi   |                  | °F                              | 207     |
| Coefficient of Thermal Expansion -30 to 30°C       | D-696            | in/(in-°F) x10 <sup>-5</sup>    | 3.0     |
| Thermal Conductivity                               | C-177            | BTU-ft/(hr-ft <sup>2</sup> -°F) | 0.075   |
| Flammability (Burning Rate)                        | D-635            | in/minute                       | 1.019   |
| Smoke Density Rating                               | D-2843           | %                               | 3.4     |
| Self-Ignition Temperature                          | D-1929           | °F                              | 833     |
| Flame Spread Index                                 | E-84             |                                 | 115     |
| Smoke Developed Index                              |                  |                                 | 550     |

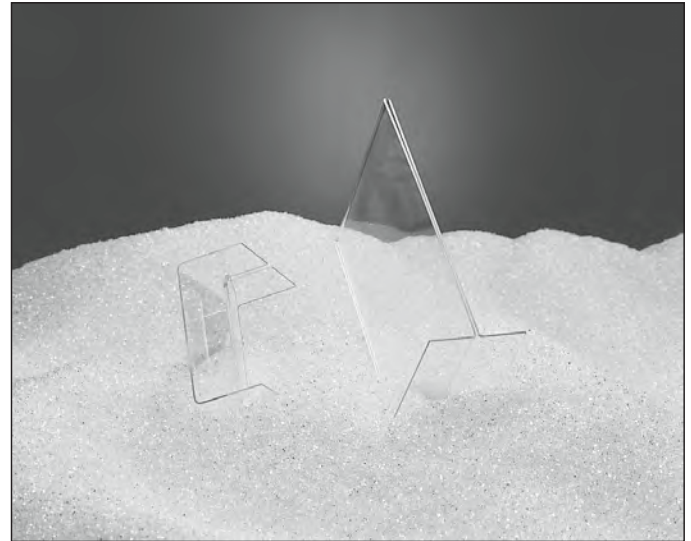
| Chemical   | ASTM Test Method                | Units | Values |
|--|---------------------------------|-------|--------|
| Resistance to Stress - Critical Craze Stress to: | ARTC modification of MIL-P-6997 |       |        |
| Isopropyl Alcohol                                |                                 | psi   | 900    |
| Lacquer Thinner                                  |                                 | psi   | 500    |
| Toluene  |                                 | psi   | 1,300  |
| Solvesso 100                                     |                                 | psi   | 1,600  |

These suggestions and data are based on information we believe to be reliable. They are offered in good faith, but without guarantee, as conditions and methods of use are beyond our control. We recommend that the prospective user determine the suitability of our materials and suggestions before adopting them on a commercial scale.



## OPTIX® Acrylic Flat Sheet

OPTIX is a continuously processed acrylic sheet that is crystal clear, impact resistant and weather resistant. It offers high molecular weight for superior thermoforming, bending and flame polishing. Thicknesses available: .040"–1.0" (1mm–25mm). Widths up to 104". Run-to-Size Sheet offered. Call for non-stock sizes and custom thicknesses.



### .060" (1.5mm)

| Item#    | Size                | Sq. Ft. | Pack Qty. | Skid Qty. |
|----------|---------------------|---------|-----------|-----------|
| 1AG000QA | 48" x 96" Polyfilm  | 32.00   | 5 Pk.     |           |
| 1AG000TA | 48" x 96" Polyfilm  | 32.00   | Bulk      | 180       |
| 1AG000UA | 48" x 96" Papermask | 32.00   | 5 Pk.     |           |
| 1A0000WA | 48" x 96" Papermask | 32.00   | Bulk      | 180       |
| 1AGL340A | 49" x 97" Polyfilm  | 33.00   | Bulk      | 125       |

### Acrylic Accessories

| Item #   | Description          | Pack Qty. |
|----------|----------------------|-----------|
| 1999999A | Plastic Cutting Tool | 12        |
| 1999990A | Plastic Cleaner      | 12        |

### .080" (2.0mm)

| Item #   | Size               | Sq. Ft. | Pack Qty. | Skid Qty. |
|----------|--------------------|---------|-----------|-----------|
| 11G0810A | 8" x 10"           | .55     | 15 Pk.    |           |
| 11G0670A | 18" x 24"          | 3.00    | 10 Pk.    |           |
| 11G0075A | 24" x 48"          | 8.00    | 10 Pk.    |           |
| 11G0830A | 28" x 30"          | 5.83    | 12 Pk.    |           |
| 11G0184A | 30" x 32"          | 6.66    | 10 Pk.    |           |
| 11G0188A | 30" x 36"          | 7.50    | 10 Pk.    |           |
| 1AG0500A | 30" x 60"          | 12.50   | 5 Pk.     |           |
| 11G0231A | 32" x 44"          | 9.78    | 10 Pk.    |           |
| 1AG0575A | 36" x 72"          | 18.00   | 5 Pk.     |           |
| 1AG0595A | 48" x 96"          | 32.00   | 5 Pk.     |           |
| 1AG0389A | 48" x 96" Polyfilm | 32.00   | Bulk      | 130       |
| 1AG1684A | 49" x 97" Polyfilm | 33.00   | Bulk      | 100       |

**Run-to-Size Available**

# ACRYLIC SHEET



## OPTIX® Acrylic Flat Sheet

### .093" (2.3mm)

| Item #   | Size                        | Sq. Ft. | Pack Qty. | Skid Qty. |
|----------|-----------------------------|---------|-----------|-----------|
| 1AU0515A | 11" x 14"                   | 1.07    | 10 Pk.    |           |
| 1AU0187A | 18" X 24"                   | 3.00    | 10 Pk     |           |
| 1AU0202A | 20" x 32"                   | 4.44    | 10 Pk.    |           |
| 1AU0228A | 24" x 28"                   | 4.67    | 10 Pk.    |           |
| 1AU0238A | 24" x 30"                   | 5.00    | 10 Pk.    |           |
| 1AU0222A | 24" x 36"                   | 6.00    | 10 Pk.    |           |
| 1AU0262A | 24" x 48"                   | 8.00    | 10 Pk.    |           |
| 1AU0252A | 26" x 28"                   | 5.06    | 10 Pk.    |           |
| 1AU0254A | 28" x 30"                   | 5.83    | 10 Pk.    |           |
| 1AU0264A | 28" x 32"                   | 6.22    | 10 Pk.    |           |
| 1AU0314A | 30" x 32"                   | 6.66    | 10 Pk.    |           |
| 1AU0364A | 30" x 36"                   | 7.50    | 10 Pk.    |           |
| 1AU0395A | 30" x 60"                   | 12.50   | 5 Pk.     |           |
| 1AU0394A | 30" x 60"                   | 12.50   | 10 Pk.    |           |
| 1AU0434A | 32" x 32"                   | 7.11    | 10 Pk.    |           |
| 1AU0464A | 32" x 40"                   | 8.89    | 10 Pk.    |           |
| 1AU0474A | 32" x 44"                   | 9.78    | 10 Pk.    |           |
| 1AU0564A | 36" x 36"                   | 9.00    | 10 Pk.    |           |
| 1AU0593A | 36" x 48"                   | 12.00   | 10 Pk.    |           |
| 1AU0611A | 36" x 60"                   | 15.00   | 10 Pk.    |           |
| 1AU0660A | 36" x 72"                   | 18.00   | 5 Pk.     |           |
| 1AU0664A | 36" x 72"                   | 18.00   | 10 Pk.    |           |
| 1AU0803A | 48" x 96"                   | 32.00   | 5 Pk.     |           |
| 1AU0800A | 48" x 96"<br>2 mil Polyfilm | 32.00   | Bulk      | 112       |
| 1AU0799A | 48" x 96"<br>Papermask      | 32.00   | Bulk      | 112       |
| 1AU0913A | 60" x 96"<br>Polyfilm       | 40.00   | 5 Pk.     |           |
| 1AU0911A | 60" x 96"<br>2 mil Polyfilm | 40.00   | Bulk      | 90        |

### .100" (2.5mm)

| Item #   | Size      | Sq. Ft. | Pack Qty. | Skid Qty. |
|----------|-----------|---------|-----------|-----------|
| 11G0606A | 16" x 20" | 2.22    | 10 Pk.    |           |
| 1AG0918A | 18" x 24" | 3.00    | 5 Pk.     |           |
| 11G0018A | 18" x 24" | 3.00    | 10 Pk.    |           |
| 1AG0930A | 20" x 32" | 4.44    | 5 Pk.     |           |
| 11G0630A | 20" x 32" | 4.44    | 10 Pk.    |           |

### .100" (2.5mm) - continued

| Item #   | Size                  | Sq. Ft. | Pack Qty. | Skid Qty. |
|----------|-----------------------|---------|-----------|-----------|
| 1AG0959A | 24" x 28"             | 4.67    | 5 Pk.     |           |
| 11G0659A | 24" x 28"             | 4.67    | 10 Pk.    |           |
| 1AG0961A | 24" x 30"             | 5.00    | 5 Pk.     |           |
| 11G0661A | 24" x 30"             | 5.00    | 10 Pk.    |           |
| 1AG0970A | 24" x 36"             | 6.00    | 5 Pk.     |           |
| 1AG0975A | 24" x 48"             | 8.00    | 5 Pk.     |           |
| 11G0675A | 24" x 48"             | 8.00    | 10 Pk.    |           |
| 1AG0995A | 26" x 28"             | 5.06    | 5 Pk.     |           |
| 11G0760A | 28" x 28"             | 5.44    | 10 Pk.    |           |
| 1AG1062A | 28" x 30"             | 5.83    | 5 Pk.     |           |
| 11G0762A | 28" x 30"             | 5.83    | 10 Pk.    |           |
| 1AG1063A | 28" x 32"             | 6.22    | 5 Pk.     |           |
| 11G0763A | 28" x 32"             | 6.22    | 10 Pk.    |           |
| 1AG1082A | 30" x 30"             | 6.25    | 5 Pk.     |           |
| 11G0782A | 30" x 30"             | 6.25    | 10 Pk.    |           |
| 1AG1084A | 30" x 32"             | 6.66    | 5 Pk.     |           |
| 11G0784A | 30" x 32"             | 6.66    | 10 Pk.    |           |
| 1AG1086A | 30" x 34"             | 7.08    | 5 Pk.     |           |
| 1AG1088A | 30" x 36"             | 7.50    | 5 Pk.     |           |
| 11G0788A | 30" x 36"             | 7.50    | 10 Pk.    |           |
| 1AG1100A | 30" x 60"             | 12.50   | 5 Pk.     |           |
| 1AG1127A | 32" x 40"             | 8.89    | 5 Pk.     |           |
| 11G0827A | 32" x 40"             | 8.89    | 10 Pk.    |           |
| 1AG1131A | 32" x 44"             | 9.78    | 5 Pk.     |           |
| 11G0831A | 32" x 44"             | 9.78    | 10 Pk.    |           |
| 1AG1160A | 36" x 36"             | 9.00    | 5 Pk.     |           |
| 11G0860A | 36" x 36"             | 9.00    | 10 Pk.    |           |
| 11G0862A | 36" x 40"             | 10.00   | 10 Pk.    |           |
| 1AG1165A | 36" x 48"             | 12.00   | 5 Pk.     |           |
| 1AG1175A | 36" x 72"             | 18.00   | 5 Pk.     |           |
| 1AG1180A | 38" x 50"             | 13.19   | 5 Pk.     |           |
| 1AG1190A | 48" x 72"             | 24.00   | 5 Pk.     |           |
| 1AG1195A | 48" x 96"             | 32.00   | 5 Pk.     |           |
| 1AG0988A | 48" x 96"<br>Polyfilm | 32.00   | Bulk      | 112       |



# ACRYLIC SHEET



## .118" (3.0mm)

| Item #   | Size                    | Sq. Ft. | Pack Qty. | Skid Qty. |
|----------|-------------------------|---------|-----------|-----------|
| 1AG1549A | 24" x 48"               | 8.00    | 5 Pk.     |           |
| 1AG1700A | 30" x 60"               | 12.50   | 5 Pk.     |           |
| 1AG3622A | 36" x 72"               | 18.00   | 4 Pk.     |           |
| 1AG1775A | 36" x 72"               | 18.00   | 5 Pk.     |           |
| 1AG1496A | 48" x 96"               | 32.00   | 3 Pk.     |           |
| 1AG1438A | 48" x 96"<br>Polyfilm   | 32.00   | Bulk      | 96        |
| 1AG1447A | 48" x 96"<br>Papermask  | 32.00   | Bulk      | 96        |
| 1AG3716A | 48" x 96"<br>TG Film    | 32.00   | Bulk      | 96        |
| 1AG1450A | 48" x 120"<br>Papermask | 40.00   | Bulk      | 50        |
| 1AG9726A | 48" x 120"<br>Polyfilm  | 40.00   | Bulk      | 50        |
| 1AG4555A | 49" x 97"<br>Polyfilm   | 33.00   | Bulk      | 80        |
| 1AG1083A | 51" x 100"<br>Polyfilm  | 35.41   | Bulk      | 84        |
| 1AG1085A | 51" x 100"<br>Papermask | 35.41   | Bulk      | 84        |
| 1AG4491A | 60" x 96"<br>Polyfilm   | 40.00   | Bulk      | 76        |
| 1AG4465A | 60" x 96"<br>Papermask  | 40.00   | Bulk      | 76        |
| 1AG2475A | 60" x 96"<br>TG Film    | 40.00   | Bulk      | 76        |
| 1AG1738A | 61" x 97"<br>Polyfilm   | 41.06   | Bulk      | 70        |
| 1AG1069A | 60" x 120"<br>Polyfilm  | 50.00   | Bulk      | 60        |
| 1AG1317A | 72" x 96"<br>Polyfilm   | 48.00   | Bulk      | 60        |
| 1AG4473A | 72" x 96"<br>Papermask  | 48.00   | Bulk      | 60        |
| 1AG8256A | 75" x 100"<br>Polyfilm  | 62.50   | Bulk      | 30        |

## .177" (4.5mm)

| Item #   | Size                    | Sq. Ft. | Pack Qty. | Skid Qty. |
|----------|-------------------------|---------|-----------|-----------|
| 1AG8509A | 48" x 96"<br>Polyfilm   | 32.00   | Bulk      | 60        |
| 1AG8511A | 48" x 96"<br>Papermask  | 32.00   | Bulk      | 60        |
| 1AG3704A | 48" x 96"<br>TG Film    | 32.00   | Bulk      | 60        |
| 1AG8516A | 49" x 97"<br>Polyfilm   | 33.00   | Bulk      | 57        |
| 1AG3053A | 51" x 100"<br>Polyfilm  | 35.41   | Bulk      | 57        |
| 1AG8202A | 51" x 100"<br>Papermask | 35.41   | Bulk      | 57        |
| 1AG8588A | 60" x 96"<br>Polyfilm   | 40.00   | Bulk      | 48        |
| 1AG8512A | 60" x 96"<br>Papermask  | 40.00   | Bulk      | 48        |
| 1AG9172A | 61" x 97"<br>Polyfilm   | 41.06   | Bulk      | 45        |
| 1AG5121A | 72" x 96"<br>Polyfilm   | 48.00   | Bulk      | 40        |
| 1AG8824A | 72" x 96"<br>Papermask  | 48.00   | Bulk      | 40        |
| 1AG1769A | 75" x 100"<br>Polyfilm  | 62.50   | Bulk      | 25        |

## .187" (4.7mm)

| Item #   | Size      | Sq. Ft. | Pack Qty. | Skid Qty. |
|----------|-----------|---------|-----------|-----------|
| 1AG8706A | 48" x 96" | 32.00   | 2 Pk.     |           |

**Run-to-Size Available**

# ACRYLIC SHEET



## OPTIX® Acrylic Flat Sheet

### .220" (5.6mm)

| Item #   | Size                    | Sq. Ft. | Pack Qty. | Skid Qty. |
|----------|-------------------------|---------|-----------|-----------|
| 1AG2123A | 18" x 24"               | 3.00    | 4 Pk      |           |
| 1AG2196A | 24" x 48"<br>Polyfilm   | 8.00    | 4 Pk      |           |
| 1AG2124A | 30" x 36"<br>Polyfilm   | 7.50    | 4 Pk      |           |
| 1AG3623A | 36" x 72"<br>Polyfilm   | 18.00   | 3 Pk      |           |
| 1AG2180A | 48" x 96"<br>Polyfilm   | 32.00   | 2 Pk      |           |
| 1AG9412A | 48" x 96"<br>Polyfilm   | 32.00   | Bulk      | 50        |
| 1AG9400A | 48" x 96"<br>Papermask  | 32.00   | Bulk      | 50        |
| 1AG3705A | 48" x 96"<br>TG Film    | 32.00   | Bulk      | 50        |
| 1AG9244A | 49" x 97"<br>Polyfilm   | 33.00   | Bulk      | 40        |
| 1AG7014A | 48" x 120"<br>Polyfilm  | 40.00   | Bulk      | 24        |
| 1AG9795A | 48" x 120"<br>Papermask | 40.00   | Bulk      | 35        |
| 1AG9150A | 51" x 100"<br>Polyfilm  | 35.41   | Bulk      | 45        |
| 1AG9038A | 51" x 100"<br>Papermask | 35.41   | Bulk      | 45        |
| 1AG9032A | 60" x 96"<br>Polyfilm   | 40.00   | Bulk      | 40        |
| 1AG9110A | 60" x 96"<br>Papermask  | 40.00   | Bulk      | 40        |
| 1AG2472A | 60" x 96"<br>TG Film    | 40.00   | Bulk      | 40        |
| 1AG9015A | 60" x 120"<br>Polyfilm  | 50.00   | Bulk      | 30        |
| 1AG9796A | 72" x 96"<br>Polyfilm   | 48.00   | Bulk      | 32        |
| 1AG9103A | 72" x 96"<br>Papermask  | 48.00   | Bulk      | 32        |
| 1AG3725A | 72" x 96"<br>TG Film    | 48.00   | Bulk      | 32        |

Run-to-Size Available

### .236" (6.0mm)

| Item #   | Size                   | Sq. Ft. | Pack Qty. | Skid Qty. |
|----------|------------------------|---------|-----------|-----------|
| 1AG1786A | 48" x 96"<br>Polyfilm  | 32.00   | Bulk      | 48        |
| 1AG1941A | 48" x 96"<br>Papermask | 32.00   | Bulk      | 48        |
| 1AG3706A | 48" x 96"<br>TG Film   | 32.00   | Bulk      | 48        |
| 1AG8541A | 49" x 97"<br>Polyfilm  | 33.00   | Bulk      | 40        |
| 1AG1736A | 61" x 97"<br>Polyfilm  | 41.06   | Bulk      | 25        |
| 1AG9238A | 75" x 100"<br>Polyfilm | 62.50   | Bulk      | 25        |

### .375" (9.5mm)

| Item #   | Size                   | Sq. Ft. | Pack Qty. | Skid Qty. |
|----------|------------------------|---------|-----------|-----------|
| 1AG9848A | 48" x 96"<br>Papermask | 32.00   | Bulk      | 32        |
| 1AG5136A | 49" x 97"<br>Polyfilm  | 33.00   | Bulk      | 25        |

### .500" (12.0mm)

| Item #   | Size                   | Sq. Ft. | Pack Qty. | Skid Qty. |
|----------|------------------------|---------|-----------|-----------|
| 1AG9900A | 48" x 96"<br>Papermask | 32.00   | Bulk      | 24        |
| 1AG3718A | 48" x 96"<br>TG Film   | 32.00   | Bulk      | 24        |
| 1AG4993A | 49" x 97"<br>Polyfilm  | 33.00   | Bulk      | 20        |

### .750" (19.0mm)

| Item #   | Size                   | Sq. Ft. | Pack Qty. | Skid Qty. |
|----------|------------------------|---------|-----------|-----------|
| 1AG7801A | 48" x 96"<br>Papermask | 32.00   | Bulk      | 16        |

### 1.00" (25.0mm)

| Item #   | Size                   | Sq. Ft. | Pack Qty. | Skid Qty. |
|----------|------------------------|---------|-----------|-----------|
| 1AG7800A | 48" x 96"<br>Papermask | 32.00   | Bulk      | 12        |

For custom and non-stock sizes, thicknesses, packaging, masking and tolerance requirements, call for availability and quotation.

# DIGITAL ACRYLIC SHEET



Discover an acrylic sheet that doesn't require an adhesion promoter prior to ink application. Developed and tested with a leading manufacturer of digital UV flatbed printers and various ink suppliers, OPTIX DA is produced with a specially formulated acrylic polymer. Optimal adhesion of UV curing inks is achieved without the need for an adhesion promoter prior to ink application. Available in clear, white and non-glare.



| Item #   | Description   | Quantity |
|----------|---|----------|
| DA10001A | .118" 48" x 96", Polyfilm                                   | 50       |
| DA10002A | .177" 48" x 96", Polyfilm                                   | 25       |
| DA10003A | .220" 48" x 96", Polyfilm                                   | 25       |
| DA10020A | .118" 48" x 96", 7328 White Polyfilm                        | 25       |
| NGDA002A | .118" 48" x 96", Clear Non-glare, Printed Adhesive/Polyfilm | 48       |
| NGDA003A | .177" 48" x 96", Clear Non-glare, Printed Adhesive/Polyfilm | 50       |
| NGDA004A | .220" 48" x 96", Clear Non-glare, Printed Adhesive/Polyfilm | 25       |

## Run-to-Size Available

# RUN-TO-SIZE PROGRAM

## Run-to-Size Program

Plaskolite offers the flexibility of running acrylic, impact modified acrylic or mirror sheet, literally, "Run-to-Size" per any specifications.

### This helps save:

- Time
- Eliminates scrap
- Improves productivity
- Reduces wear and tear on equipment
- Improves the relationship with your customers "Giving them a value added product"
- No "year end drop" and unused inventory

### Wide range of sizes up to 105"

### Thickness range from .040" to 1.0"

### Low minimum order requirements

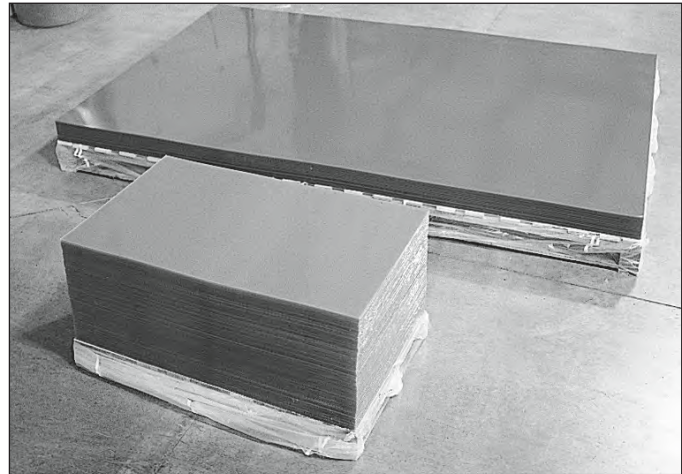
### Quick turnaround time—the shortest in the industry

### Non-Stock Material:

- Special tolerances, film coverages, thicknesses and sizes available
- Saw cut edges available
- 3,000 lb. minimum order required for a custom thickness of clear acrylic
- 3,000 lb. minimum required for color production run
- 5,000 lb. minimum required for .500" color production run
- 10,000 lb. minimum required for color production run over .500"

### On line production minimum thickness, length and width requirements

- Saw cut and slitter/hot knife edges available.
- Sheet edges may vary, please specify preferred edge cut at the time of order.



| Thickness | Width | Length |
|-----------|-------|--------|
| .040"*    | 5"    | 14"    |
| .060"***  | 5"    | 14"    |
| .080"***  | 5"    | 14"    |
| .100"***  | 5"    | 14"    |
| .125"***  | 5"    | 14"    |
| .177"     | 28"   | 20"    |
| .187"     | 28"   | 20"    |
| .220"     | 28"   | 20"    |
| .236"     | 28"   | 20"    |
| .250"     | 28"   | 20"    |
| .375"     | 28"   | 20"    |
| .500"     | 30"   | 30"    |
| .750"***  | 30"   | 30"    |
| 1.00"***  | 30"   | 30"    |

1,000 lb. minimum per size

\* 20,000 lb. minimum required for production run

\*\* 10,000 lb. minimum required for part lengths less than 14 inches

\*\*\* 10,000 lb. minimum required per size change

### Run-to-Size Sheet Minimums

### Colors, DURAPLEX® and Patterns

- 3,000 lb. minimum required for colors
- 20,000 lb. minimum for patterns
- 3,000 lb. minimum required for .500 colors
- 1,000 lb. minimum for required per size change

# IMPACT MODIFIED ACRYLIC SHEET



## DURAPLEX® Impact Modified Acrylic Sheet

### Benefits:

- Superior impact strength; less breakage in shipment and use.
- DURAPLEX is excellent for handling—less breakage in shipment.
- Ideal alternative to Polycarbonate—advantages are weatherability and thermoforming. No drying required.
- Wide range of forming temperatures 275°–375°. Easy to form with short cycles.
- Low orientation—low shrink for drape or clamp forming.
- Custom Impact blends offered—10%, 15%, 25%, 35%, 40%, 50%, 75%, or 100% or any blend needed.
- Thicknesses .040"–.500"; widths up to 105".
- Offered in clear, colors, patterns, and Run-to-Size.
- Available in flat sheet or roll stock.



**Custom and non-stock items available. Call for quotation and minimum requirements.**

**Applications for Impact Modified Acrylic Sheet include displays, skylights, signage, fabrication, windows, doors and any indoor/outdoor application where durability is needed.**

### DURAPLEX® Impact Modified Acrylic

| Item #   | Description                   | Sq. Ft. | Pack Qty. |
|----------|-------------------------------|---------|-----------|
| 1X08123A | 18" x 24" 40% I Acrylic .080" | 3       | 10 Pack   |
| 1X08127A | 24" x 48" 40% I Acrylic .080" | 8       | 6 Pack    |
| 1X08126A | 30" x 60" 40% I Acrylic .080" | 12.5    | 5 Pack    |
| 1X08105A | 8" x 10" 40% I Acrylic .093"  | .5      | 15 Pack   |
| 1X02448A | 24" x 48" 40% I Acrylic .093" | 8       | 10 Pack   |
| 1X02830A | 28" x 30" 40% I Acrylic .093" | 5.83    | 10 Pack   |
| 1X03244A | 32" x 44" 40% I Acrylic .093" | 9.77    | 10 Pack   |
| 1X47435A | 48" x 96" 70% I Acrylic .118" | 32      | 5 Pack    |
| 1X47433A | 48" x 96" 70% I Acrylic .177" | 32      | 3 Pack    |

### Run-to-Size Available

# IMPACT MODIFIED ACRYLIC SHEET



## DURAPLEX® Impact Modified Acrylic Sheet



### Impact Modified Acrylic Sheet

| PROPERTY                         | ASTM   | UNITS       |                        | 30% I                  | 50% I                | 70% I                  | 100% I               |
|----------------------------------|--------|-------------|------------------------|------------------------|----------------------|------------------------|----------------------|
| <b>Optical</b>                   |        |             |                        |                        |                      |                        |                      |
| Light Transmittance              | D-1003 | %           | 92                     | 92                     | 92                   | 90                     | 90                   |
| Percent Haze                     | D-1003 | %           | 2                      | 2                      | 2                    | <3                     | <3                   |
| <b>Mechanical</b>                |        |             |                        |                        |                      |                        |                      |
| Izod Impact Strength             | D-256  | ft.lbs./in. | 0.4                    | 0.6                    | 0.7                  | 0.9                    | 1.1                  |
| Tensile Modulus of Elasticity    | D-638  | PSI         | 490,000                | 376,000                | 340,000              | 304,000                | 250,000              |
| Tensile Strength @ Yield         | D-638  | PSI         | 11,030                 | 9,000                  | 8,000                | 7,100                  | 5,600                |
| Flexural Strength @ Yield        | D-790  | PSI         | 17,000                 | 13,690                 | 12,000               | 10,610                 | 8,300                |
| Rockwell Hardness Method A       | D-785  |             | 95                     | 78                     | 68                   | 59                     | 46                   |
| <b>Thermal</b>                   |        |             |                        |                        |                      |                        |                      |
| Deflection Temperature (264psi)  | D-648  | °F          | 203                    | 198                    | 194                  | 190                    | 185                  |
| Coefficient of Thermal Expansion | D-696  | in./in.-°F  | 3.0 x 10 <sup>-5</sup> | 3.5 x 10 <sup>-5</sup> | 4 x 10 <sup>-5</sup> | 4.5 x 10 <sup>-5</sup> | 5 x 10 <sup>-5</sup> |
| Self Ignition Temperature        | D-1929 | °F          | 833                    | >850                   | >850                 | >850                   | >850                 |
| Burning Rate                     | D-635  | in./min.    | 1.019                  | 0.85                   | 1.25                 | 1.53                   | 1.97                 |
| Smoke Density Rating             | D-2843 | %           | 3.4                    | 5.20                   | 8.50                 | 11.5                   | 16.5                 |
| <b>Processing</b>                |        |             |                        |                        |                      |                        |                      |
| Density Specific Gravity         | D-792  |             | 1.19                   | 1.18                   | 1.17                 | 1.16                   | 1.15                 |
| Moisture Water Absorption        | D-570  | % wt. gain  | 0.4                    | 0.3                    | 0.3                  | 0.3                    | 0.3                  |
| Dimensional Molding Shrinkage    | D-955  | mils./in.   | 2 -6                   | 3 -6                   | 3 -6                 | 3 -6                   | 3 -6                 |

These values are not intended for specification.

### DURAPLEX®/Polycarbonate Comparison

| Feature             | DURAPLEX  | Polycarbonate  |
|---------------------|---|--|
| Weatherability      | Excellent weatherability with no impact reduction | Yellows when exposed to sunlight, lessens impact strength after exposure |
| Forming             | Better melt strength                              | Low melt strength  |
| Forming Temperature | Wide range (275°F–375°F)                          | Distinct forming temperature   |
| Optical Clarity     | Very clear  | Less clear, hazy, shows distortion                                       |

### Run-to-Size Available

# ROLL STOCK ACRYLIC

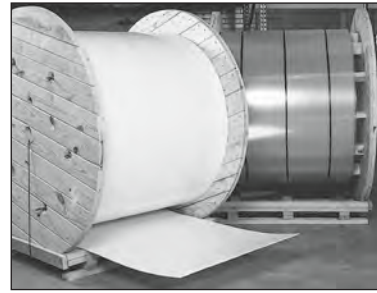
## Sign Grade Roll Stock & Flat Acrylic Sheet

### Plaskolite offers three grades of acrylic:

- SG OPTIX® Acrylic
- SG05 DURAPLEX® Medium Impact Modified Acrylic
- SG10 DURAPLEX® High Impact Modified Acrylic

### Roll Stock Advantages:

- Unlimited lengths, no seams in finished products
- Superior forming characteristics—no predrying, detailed vacuum definition, faster cycle times when compared to continuous cast acrylic
- Better weatherability, color, gloss and clarity than polycarbonate
- Cost competitive when compared to other rigid sign face materials
- Better, total sheet usage—less scrap due to custom size roll widths and lengths



Custom roll widths, lengths, thicknesses and colors available. Call for quotation and delivery information.

Flat sheet is supplied with a 2 mil polyfilm unless otherwise noted. Papermasking or 3 mil formable film also offered.

| Thicknesses | Length |
|-------------|--------|
| .118"       | 500'   |
| .150"       | 400'   |
| .177"       | 350'   |
| .236"       | 250'   |

| Widths     | Colors            |
|------------|-------------------|
| 30" - 105" | Clear, 7328 White |

### SG-OPTIX® General Purpose Acrylic Flat Sheet - Clear and Colors Available

| Item#    | Description                     | Size       | Skid Qty |
|----------|---------------------------------|------------|----------|
| 1X52199A | .118" SG 7328 White             | 49" x 97"  | 80       |
| 1X06118A | .118" SG 3015 White             | 49" x 97"  | 80       |
| 1X27260A | .177" SG 7328 White/Papermasked | 48" x 96"  | 57       |
| 1X48214A | .177" SG 7328 White             | 49" x 97"  | 57       |
| 1X06119A | .177" SG 3015 White             | 49" x 97"  | 57       |
| 1X03212A | .177" SG 2447 White             | 49" x 97"  | 57       |
| 1X15163A | .177" SG 7328 White             | 48" x 120" | 30       |
| 1X25097A | .177" SG 7328 White             | 51" x 100" | 57       |
| 1X11287A | .177" SG 7328 White             | 60" x 120" | 25       |
| 1X75128A | .177" SG 7328 White             | 75" x 100" | 30       |
| 1X27530A | .177" SG 7328 White             | 75" x 125" | 25       |
| 1X06120A | .236" SG 3015 White             | 49" x 97"  | 45       |
| 1X60650A | .236" SG 2447 White             | 49" x 97"  | 45       |

### SG05-DURAPLEX® Medium Impact Acrylic Flat Sheet - Clear and Colors Available

| Item#    | Description           | Size       | Skid Qty |
|----------|-----------------------|------------|----------|
| 1X52208A | .118" SG05 Clear      | 51" x 100" | 48       |
| 1AG9811A | .177" SG05 Clear      | 51" x 100" | 25       |
| 1AG9812A | .177" SG05 Clear      | 75" x 100" | 25       |
| 1AG9813A | .177" SG05 Clear      | 75" x 125" | 25       |
| 1X11203A | .177" SG05 7328 White | 51" x 100" | 25       |
| 1X11202A | .177" SG05 7328 White | 75" x 100" | 25       |
| 1X11205A | .177" SG05 7328 White | 75" x 125" | 25       |

**Orientation/Shrinkage/Reversion:** SG Sheet exhibits the lowest shrinkage of any extruded acrylic sheet on the market. Cell cast or continuous cast sheet, depending on the manufacturer, may shrink from 0% to 2% in both directions. Plaskolite's sheet performs much like cell cast or continuous cast sheet in relationship to shrinkage.

# ROLL STOCK ACRYLIC

## Sign Grade Roll Stock & Flat Acrylic Sheet

### Physical Property & Performance Summary

OPTIX®

DURAPLEX®

| Property                         | ASTM   | UNITS        | SG                   | SG-05                | SG-10                |
|----------------------------------|--------|--------------|----------------------|----------------------|----------------------|
| <b>Optical</b>                   |        |              |                      |                      |                      |
| Light Transmittance              | D-1003 | %            | 92                   | 92                   | 90                   |
| Percent Haze                     | D-1003 | %            | 2                    | 2                    | <3                   |
| <b>Mechanical</b>                |        |              |                      |                      |                      |
| Izod Impact Strength (73°F)      | D-256  | ft.-lbs./in. | 0.4                  | 0.7                  | 1.1                  |
| Izod Impact Strength (0°F)       | D-256  | ft.-lbs./in. | 0.2                  | 0.2                  | 0.5                  |
| Tensile Modulus of Elasticity    | D-638  | PSI          | 490,000              | 340,000              | 250,000              |
| Tensile Strength @ Yield         | D-638  | PSI          | 11,030               | 8,000                | 5,600                |
| Flexural Strength @ Yield        | D-790  | PSI          | 17,000               | 12,000               | 8,300                |
| Rockwell Hardness Method A       | D-785  |              | 95                   | 68                   | 46                   |
| <b>Thermal</b>                   |        |              |                      |                      |                      |
| Deflection Temperature (264 psi) | D-648  | °F           | 203                  | 194                  | 185                  |
| Coefficient of Thermal Expansion | D-696  | in./(in.-°F) | 3 x 10 <sup>-5</sup> | 4 x 10 <sup>-5</sup> | 5 x 10 <sup>-5</sup> |
| <b>Processing</b>                |        |              |                      |                      |                      |
| Density Specific Gravity         | D-792  |              | 1.19                 | 1.17                 | 1.15                 |
| Moisture Water Absorption        | D-570  | % wt. gain   | 0.4                  | 0.3                  | 0.3                  |
| Dimensional Molding Shrinkage    | D-955  | mils./in.    | 2 - 6                | 3 - 6                | 3 - 6                |

OPTIX®

DURAPLEX®

### Suggested Thermoforming Conditions

| Property  | UNITS   | SG      | SG-05   | SG-10   | Cast Acrylic |
|---|---------|---------|---------|---------|--------------|
| <b>Thermoforming for Sheet Thickness 0.100" to 0.375"</b> |         |         |         |         |              |
| Optimal Forming Temperature                               | °F      | 320     | 315     | 310     | 380          |
| Forming Temperature Range                                 | °F      | 270-350 | 270-350 | 270-350 | 350-390      |
| Heating Time Two Sided Infrared                           | Minutes | 1 - 10  | 1 - 10  | 1 - 10  | 2 - 25       |
| Cooling Time  | Minutes | 0.5 - 4 | 0.5 - 4 | 0.5 - 4 | 1 - 7        |
| Optimal Mold Temperature                                  | °F      | 180     | 175     | 170     | 190          |
| <b>Free Shrinkage at Forming Temperature</b>              |         |         |         |         |              |
| Machine Direction   | %       | 1 - 3   | 1 - 3   | 1 - 3   | 0 - 2        |
| Transfer Direction  | %       | 0       | 0       | 0       | 0 - 2        |

These suggestions and data are based on information we believe to be reliable. They are offered in good faith, but without guarantee, as conditions and methods of use are beyond our control. We recommend that the prospective user determine the suitability of our materials and suggestions before adopting them on a commercial scale.



# LIGHT DIFFUSING ACRYLIC



## OPTIX® LD Light Diffusing Acrylic Sheet

OPTIX LD light diffusing acrylic sheet provides superior diffusion properties that allow for greater sign design flexibility and slim profile channel (CAN) letters. Pin points and luminance fluctuations are eliminated while maintaining optimum light transmission. Available in a variety of popular sign colors, SG05 impact-modified and non-glare finishes. Custom color matching available. Supplied with papermask 2-sides unless noted below.



| Item #               | Description                         | Quantity       |
|----------------------|-------------------------------------|----------------|
| <b>2447 LD WHITE</b> |                                     |                |
| 1X97003A             | .118" 51" x 100"                    | 48/Mini Pallet |
| 1X97001A             | .177" 51" x 100"                    | 28/Mini Pallet |
| 1X97002A             | .177" 75" x 100"                    | 28/Mini Pallet |
| 1X11250A             | .177" 51" x 100" SG05 Polyfilm      | 28/Mini Pallet |
| 1X11251A             | .177" 75" x 100" SG05 Polyfilm      | 28/Mini Pallet |
| <b>7328 LD WHITE</b> |                                     |                |
| 1X48233A             | .118" 51" x 100"                    | 48/Mini Pallet |
| 1X55052A             | .118" 51" x 100" SG05 Polyfilm      | 48/Mini Pallet |
| <b>2406 LD WHITE</b> |                                     |                |
| 1X72156A             | .118" 51" x 100" Polyfilm           | 28/Mini Pallet |
| 1X72157A             | .177" 51" x 100" Polyfilm           | 28/Mini Pallet |
| 1X11414A             | .177" 51" x 100" SG05 Polyfilm      | 28/Mini Pallet |
| 1X11410A             | .177" 75" x 100" SG05 Polyfilm      | 28/Mini Pallet |
| 1X11416A             | .177" 75" x 125" SG05 Polyfilm      | 28/Mini Pallet |
| <b>2114 LD BLUE</b>  |                                     |                |
| 1X95005A             | .118" 48" x 96"                     | 48/Mini Pallet |
| 1X04031A             | .118" 48" x 96"                     | 5 Pack         |
| 1X95002A             | .177" 48" x 96"                     | 28/Mini Pallet |
| 1X04025A             | .177" 48" x 96"                     | 3 Pack         |
| 1X95010A             | .177" 48" x 96" Polyfilm            | 28/Mini Pallet |
| <b>2050 LD BLUE</b>  |                                     |                |
| 1X94003A             | .118" 48" x 96"                     | 48/Mini Pallet |
| 1X94001A             | .177" 48" x 96"                     | 28/Mini Pallet |
| <b>2157 LD RED</b>   |                                     |                |
| 1X04029A             | .118" 48" x 96"                     | 5 Pack         |
| 1X04030A             | .177" 48" x 96"                     | 3 Pack         |
| <b>LD NON-GLARE</b>  |                                     |                |
| 1X55051A             | .118" 51" x 100" 7328 LD White      | 48/Mini Pallet |
| 1X21591A             | .177" 51" x 100" 7328 LD White      | 28/Mini Pallet |
| 1X53149A             | .118" 51" x 100" SG05 7328 LD White | 48/Mini Pallet |
| 1X53161A             | .177" 51" x 100" SG05 7328 LD White | 28/Mini Pallet |

| Item #                | Description                    | Quantity       |
|-----------------------|--------------------------------|----------------|
| <b>2793 LD RED</b>    |                                |                |
| 1X04028A              | .118" 48" x 96"                | 5 Pack         |
| 1X91002A              | .177" 48" x 96"                | 28/Mini Pallet |
| 1X91003A              | .177" 48" x 96"                | 7/Case         |
| 1X91000A              | .177" 75" x 100"               | 28/Mini Pallet |
| 1X91001A              | .177" 51" x 100"               | 28/Mini Pallet |
| 1X10051A              | .177" 72" x 96" SG05           | 28/Mini Pallet |
| 1X52618A              | .177" 75" x 100" SG05          | 28/Mini Pallet |
| 1X91013A              | .177" 48" x 96" Polyfilm       | 28/Mini Pallet |
| <b>2283 LD RED</b>    |                                |                |
| 1X92005A              | .118" 48" x 96"                | 48/Mini Pallet |
| 1X04026A              | .118" 48" x 96"                | 5 Pack         |
| 1X92002A              | .177" 48" x 96"                | 28/Mini Pallet |
| 1X04027A              | .177" 48" x 96"                | 3 Pack         |
| 1X92001A              | .177" 51" x 100"               | 28/Mini Pallet |
| 1X92000A              | .177" 75" x 100"               | 28/Mini Pallet |
| 1X92012A              | .177" 51" x 100" SG05 Polyfilm | 57/Mini Pallet |
| 1X92013A              | .177" 75" x 100" SG05 Polyfilm | 28/Mini Pallet |
| 1X92024A              | .177" 48" x 96" Polyfilm       | 28/Mini Pallet |
| <b>2037 LD YELLOW</b> |                                |                |
| 1X93005A              | .118" 48" x 96"                | 48/Mini Pallet |
| 1X04022A              | .118" 48" x 96"                | 5 Pack         |
| 1X93002A              | .177" 48" x 96"                | 28/Mini Pallet |
| 1X04023A              | .177" 48" x 96"                | 3 Pack         |
| 1X93001A              | .177" 51" x 100"               | 28/Mini Pallet |
| 1X93000A              | .177" 75" x 100"               | 28/Mini Pallet |

Run-to-Size Available

PLASKOLITE

# COLORED SHEET



## Colored Acrylic Flat Sheet

OPTIX® continuously processed colored acrylic sheet is offered in thicknesses of .060" to 1.0" and widths up to 100". This sheet is an excellent choice for skylights, displays, P.O.P., sunrooms, awnings and signage. Custom color matching available. Call for quotation on nonstock sizes, thicknesses and minimum quantities.

### Colors Available:

- 2447 White
- 7328 White
- 2406 White
- 3015 White
- 2025 Black
- 2064 Gray
- 2074 Gray
- 2094 Gray
- 2514 Gray
- 2515 Gray
- 2538 Gray
- 2370 Bronze
- 2404 Bronze
- 2412 Bronze
- 2540 Bronze
- 2539 Bronze
- 3030 Green Edge  
TemperElite

### Light Transmission at .118"

| Color | %   |
|-------|-----|
| Clear | 92% |
| 2412  | 27% |
| 2404  | 49% |
| 2370  | 10% |
| 2540  | 75% |
| 2064  | 27% |
| 2074  | 13% |
| 2094  | 45% |
| 2515  | 75% |
| 2538  | 16% |
| 2539  | 60% |
| 2406* | 68% |
| 2447* | 53% |
| 7328* | 32% |
| 3015* | 3%  |
| 2514  | 58% |

\* Light transmission changes with thickness.

| Item #   | Description                          | Quantity |
|----------|--------------------------------------|----------|
| 1X49013A | .060" 48" x 96" 2025 Black Papermask | 25/Skid  |
| 1X75209A | .060" 48" x 96" 2447 White Polyfilm  | 25/Skid  |
| 1X01237A | .060" 48" x 96" 2447 White Papermask | 10 Pack  |
| 1X01238A | .060" 48" x 96" 7328 White Papermask | 10 Pack  |
| 1X48140A | .093" 30" x 36" 2412 Bronze Polyfilm | 10 Pack  |
| 1X52011A | .118" 48" x 96" 2025 Black Polyfilm  | 48/Skid  |
| 1X50013A | .118" 48" x 96" 2025 Black Papermask | 5 Pack   |
| 1X04062A | .118" 48" x 96" 2025 Black Polyfilm  | 5 Pack   |
| 1X03133A | .118" 48" x 96" 2447 White Papermask | 80/Skid  |
| 1X52153A | .118" 48" x 96" 2447 White Polyfilm  | 48/Skid  |
| 1X04064A | .118" 48" x 96" 2447 White Polyfilm  | 5 Pack   |
| 1X06899A | .118" 48" x 96" 3015 White Polyfilm  | 48/Skid  |
| 1X04063A | .118" 48" x 96" 3015 White Polyfilm  | 5 Pack   |
| 1X52135A | .118" 48" x 96" 7328 White Polyfilm  | 80/Skid  |
| 1X03714A | .118" 48" x 96" 7328 White Polyfilm  | 48/Skid  |
| 1X04065A | .118" 48" x 96" 7328 White Polyfilm  | 5 Pack   |
| 1X04066A | .118" 48" x 96" 2412 Bronze Polyfilm | 5 Pack   |
| 1X04067A | .118" 48" x 96" 2404 Bronze Polyfilm | 5 Pack   |
| 1X04069A | .118" 48" x 96" 2370 Bronze Polyfilm | 5 Pack   |
| 1X04070A | .118" 48" x 96" 2074 Smoke Polyfilm  | 5 Pack   |
| 1X52023A | .118" 48" x 96" 2064 Smoke Polyfilm  | 48/Skid  |
| 1X04071A | .118" 48" x 96" 2064 Smoke Polyfilm  | 5 Pack   |
| 1X04068A | .118" 48" x 96" 3030 Green Polyfilm  | 5 Pack   |

# COLORED SHEET



## Colored Acrylic Flat Sheet

| Item #   | Description                          | Quantity |
|----------|--------------------------------------|----------|
| 1X52232A | .118" 49" x 97" 2025 Black Polyfilm  | 80/Skid  |
| 1X87468A | .118" 49" x 97" 2447 White Polyfilm  | 80/Skid  |
| 1X03186A | .118" 48" x 120" 7328 White Polyfilm | 25/Skid  |
| 1X52115A | .177" 48" x 96" 2025 Black Polyfilm  | 28/Skid  |
| 1X04048A | .177" 48" x 96" 2025 Black Polyfilm  | 3 Pack   |
| 1X03331A | .177" 48" x 96" 2447 White Polyfilm  | 28/Skid  |
| 1X31488A | .177" 49" x 97" 2025 Black Polyfilm  | 57/Skid  |
| 1X04050A | .177" 48" x 96" 2447 White Polyfilm  | 3 Pack   |
| 1X06894A | .177" 48" x 96" 3015 White Polyfilm  | 28/Skid  |
| 1X04049A | .177" 48" x 96" 3015 White Polyfilm  | 3 Pack   |
| 1X27240A | .177" 48" x 96" 7328 White Polyfilm  | 28/Skid  |
| 1X04047A | .177" 48" x 96" 7328 White Polyfilm  | 3 Pack   |
| 1X04051A | .177" 48" x 96" 2412 Bronze Polyfilm | 3 Pack   |
| 1X04046A | .177" 48" x 96" 2074 Smoke Polyfilm  | 3 Pack   |
| 1X04052A | .177" 48" x 96" 2064 Smoke Polyfilm  | 3 Pack   |
| 1X35516A | .220" 48" x 96" 2025 Black Polyfilm  | 24/Skid  |
| 1X04054A | .220" 48" x 96" 2025 Black Polyfilm  | 2 Pack   |
| 1X35534A | .220" 48" x 96" 2447 White Polyfilm  | 24/Skid  |
| 1X04056A | .220" 48" x 96" 2447 White Polyfilm  | 2 Pack   |
| 1X06892A | .220" 48" x 96" 3015 White Polyfilm  | 24/Skid  |
| 1X04055A | .220" 48" x 96" 3015 White Polyfilm  | 2 Pack   |
| 1X35511A | .220" 48" x 96" 7328 White Polyfilm  | 24/Skid  |
| 1X04057A | .220" 48" x 96" 7328 White Polyfilm  | 2 Pack   |
| 1X04058A | .220" 48" x 96" 2412 Bronze Polyfilm | 2 Pack   |
| 1X04059A | .220" 48" x 96" 2074 Smoke Polyfilm  | 2 Pack   |
| 1X04053A | .220" 48" x 96" 2064 Smoke Polyfilm  | 2 Pack   |
| 1X31489A | .236" 49" x 97" 2025 Black Polyfilm  | 45/Skid  |
| 1X60650A | .236" 49" x 97" 2447 White Polyfilm  | 45/Skid  |
| 1X06120A | .236" 49" x 97" 3015 White Polyfilm  | 45/Skid  |
| 1X72151A | .236" 49" x 97" 7328 White Polyfilm  | 45/Skid  |

**Run-to-Size Available**

# PATTERNED SHEET



## OPTIX® Frost/OPTIX® 95

OPTIX Frost has a frosting additive incorporated throughout the sheet, providing an elegant textured surface on both sides.

OPTIX 95 has a matte finish on one side that provides a decorative effect and reduces surface reflections.

Patterned sheet products can be easily fabricated using a variety of techniques. Contact Plaskolite for custom thickness and size information.



### OPTIX® Frost Clear Acrylic Sheet

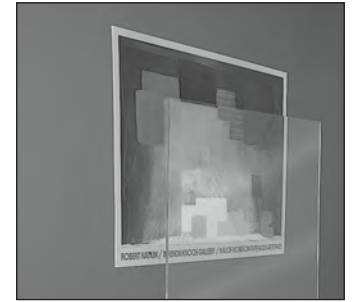
| Item #   | Description                          | Quantity |
|----------|--------------------------------------|----------|
| 1AGL539A | .080" 24" x 48" LED Frost Papermask  | Bulk 300 |
| 1AGL533A | .080" 51" x 100" LED Frost Papermask | Bulk 100 |
| 1X76205A | .118" 48" x 96" Frost Papermask      | Bulk 50  |
| 1X76247A | .118" 48" x 96" Frost Papermask      | 5 Pack   |
| 1X76204A | .220" 48" x 96" Frost Papermask      | Bulk 25  |
| 1X76246A | .220" 48" x 96" Frost Papermask      | 2 Pack   |

### OPTIX® 95 Clear Acrylic Sheet with Matte Finish

| Item #   | Description                                     | Quantity |
|----------|---|----------|
| P951001A | .118" 48" x 96" 95 Printed/Plain Papermask      | Bulk 50  |
| P952008A | .118" 51" x 100" 95 LED Printed/Plain Papermask | Bulk 50  |
| P951003A | .220" 48" x 96" 95 Printed/Plain Papermask      | Bulk 25  |

### Run-to-Size Available

# NON-GLARE ACRYLIC SHEET



## Patterned Non-Glare Acrylic Flat Sheet

Plaskolite's OPTIX continuously processed non-glare acrylic is ideal for framing applications, signage, silkscreening and point of purchase displays.

Custom thicknesses and non-stock sizes offered. Call for quotation and delivery information.

### OPTIX® Non-Glare Heavy Matte

| Item #   | Description                                  | Quantity |
|----------|--|----------|
| 1X4896UA | .060" 48" x 96" Non-Glare Adhesive/polyfilm  | 5 Pack   |
| 1X48978A | .060" 48" x 96" Non-Glare Adhesive/polyfilm  | Bulk 125 |
| 1X48973P | .060" 48" x 96" Non-Glare Papermask, 2 sides | 5 Pack   |
| 1X48973A | .060" 48" x 96" Non-Glare Papermask, 2 sides | Bulk 125 |
| 1X48947A | .080" 48" x 96" Non-Glare Adhesive/polyfilm  | 5 Pack   |
| 1X4896PA | .080" 48" x 96" Non-Glare Adhesive/polyfilm  | Bulk 100 |
| 1X4896QA | .125" 48" x 96" Non-Glare Adhesive/polyfilm  | 5 Pack   |
| 1X4896RA | .125" 48" x 96" Non-Glare Adhesive/polyfilm  | Bulk 50  |
| 1X48989A | .125" 48" x 96" Non-Glare Papermask, 2 sides | 5 Pack   |
| 1X48986A | .125" 48" x 96" Non-Glare Papermask, 2 sides | Bulk 50  |
| 1X49137A | .177" 48" x 96" Non-Glare Papermask, 2 sides | 3 Pack   |
| 1X49135A | .220" 48" x 96" Non-Glare TG Film/polyfilm   | 2 Pack   |
| 1X49126A | .220" 48" x 96" Non-Glare Papermask, 2 sides | 2 Pack   |

### OPTIX® Non-Glare Light Matte

| Item #     | Description  | Quantity |
|------------|--|----------|
| 625017-1   | .080" 48" x 96" Non-Glare TG Film/paper replacement film | Bulk 100 |
| 625203-1   | .080" 48" x 96" Non-Glare Papermask, 2 sides             | Bulk 100 |
| 625007-1   | .100" 48" x 96" Non-Glare Adhesive polyfilm              | Bulk 100 |
| 625015-1   | .118" 48" x 96" Non-Glare TG Film/paper replacement film | Bulk 80  |
| 625303-1   | .125" 48" x 96" Non-Glare Papermask, 2 sides             | Bulk 80  |
| 625008-1   | .125" 48" x 96" Non-Glare Adhesive polyfilm              | Bulk 80  |
| 11-0060213 | .125" 60" x 96" Non-Glare Adhesive/Polyfilm              | Bulk 70  |

### OPTIX® 99 Ultra-light Matte

| Item #   | Description                                  | Quantity |
|----------|--|----------|
| 1X53879A | .060" 48" x 96" Ultra-light matte, papermask | Bulk 125 |
| 1X53880A | .080" 48" x 96" Ultra-light matte, papermask | Bulk 100 |
| 1X53881A | .125" 48" x 96" Ultra-light matte, papermask | Bulk 50  |
| 1X53882A | .125" 48" x 96" Ultra-light matte, polyfilm  | Bulk 50  |

**Run-to-Size Available**

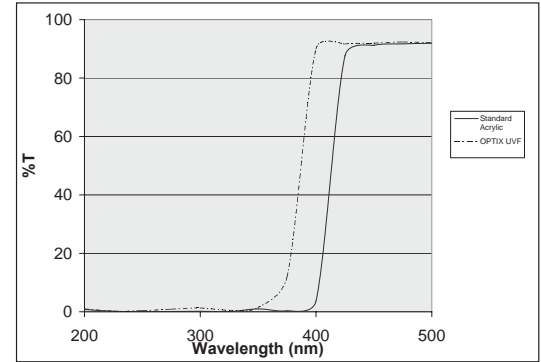
# FRAMING SHEET



## Picture Frame Glazing Sheet

**OPTIX® Frame Grade Clear and UVF acrylic sheet are camera inspected throughout the manufacturing processes to ensure the highest quality.**

- OPTIX Frame Grade is available in a thickness range from .060" to .118".
- Available in .098" and .118" thickness, OPTIX Frame Grade UVF provides the highest protection from UV light, absorbing 98% of the damaging rays.
- UVF non-glare acrylic available.



### OPTIX® Frame Grade Clear Acrylic

| Item #   | Description               | Sq. Ft. | Pack Qty. |
|----------|---------------------------|---------|-----------|
| FG00023A | .060" 48" x 96" Polyfilm  | 32      | Bulk 180  |
| FG00025A | .090" 48" x 96" Polyfilm  | 32      | Bulk 120  |
| FG00027A | .118" 48" x 96" Polyfilm  | 32      | Bulk 96   |
| FG00028A | .118" 48" x 96" Papermask | 32      | Bulk 96   |

### OPTIX Frame® Grade UVF Acrylic with Printed Papermask

| Item #    | Description     | Sq. Ft. | Pack Qty. |
|-----------|-----------------|---------|-----------|
| 1UVF040A  | .098" 48" x 96" | 32      | Bulk 56   |
| 1UVF 041A | .118" 48" x 96" | 32      | Bulk 48   |

**OPTIX® Clear and Non-glare acrylic sheet are stocked in a variety of popular picture frame sizes.**

- Superior impact resistance and half the weight of glass.
- OPTIX non-glare acrylic reduces glare and reflection from any viewing angle.

### .040" (1.0mm) Clear Acrylic with Polyfilm

| Item #   | Size         | Sq. Ft. | Qty. Per Pack |
|----------|--------------|---------|---------------|
| 1AU0920A | 8.5" x 11"   | .64     | Bulk 77       |
| 1AU0921A | 11" x 14"    | 1.06    | 47 Pack       |
| 1AU0924A | 16" x 20"    | 2.22    | 23 Pack       |
| 1AU0925A | 22" x 28"    | 4.27    | 12 Pack       |
| 1AU0926A | 24" x 36"    | 6.00    | 8 Pack        |
| 1AG8458A | 49" x 100.5" | 34.17   | Bulk 120      |

### .050" (1.2mm) Non-Glare Acrylic with Printed Adhesive Film

| Item #   | Size      | Sq. Ft. | Qty. Per Pack |
|----------|-----------|---------|---------------|
| 1X60068A | 8" x 10"  | .55     | Bulk 90       |
| 1X09241A | 8" x 10"  | .55     | 25 Pack       |
| 1X09242A | 11" x 14" | 1.06    | 25 Pack       |
| 1X60069A | 11" x 14" | 1.06    | 47 Pack       |
| 1X09244A | 12" x 16" | 1.33    | 25 Pack       |

### Run-to-Size Available

# PATTERNED SHEET



## Patterned Acrylic Sheet

Plaskolite offers patterned acrylic sheet for applications such as shower doors, displays, indoor/outdoor furniture, point of purchase and home furnishing products.

Custom and non-stock thicknesses, colors, patterns and sizes available.  
Call for quotation and delivery information.



**Adobe**



**P-32**

## Patterned Acrylic Sheet

| Item #   | Description                  | Quantity |
|--|------------------------------|----------|
| <b>Adobe (Double side pattern)</b><br>635000-1 | 51" x 100" Polyfilm .220"    | 45/Skid  |
| <b>P-32 Worthington/Haircell</b><br>P324896A   | 48.5" x 96.5" Polyfilm .220" | 50/Skid  |

Maximum width offered 51".

## Run-to-Size Available

# COPOLYESTER

## VIVAK®

### VIVAK® PETG

VIVAK is transparent copolyester that offers a unique balance of physical properties and ease of fabrication.

VIVAK is the ideal material for applications that require deep draws, complex die cuts and precise molded-in details without sacrificing structural integrity. It is produced with a resin that complies with FDA requirements for food contact, and can be easily decorated by painting, silk screening or hot stamping. VIVAK is used in a variety of industries including POP/display and store fixtures.



Contact Plaskolite for minimum production requirements for sizes, colors and thicknesses.

| Item #   | Description  | Quantity |
|----------|--|----------|
| PE20025A | .020" 48" x 96" Clear w/ Joggable Film               | 240/Skid |
| PE20027A | .030" 48" x 96" Clear w/ Joggable Film               | 170/Skid |
| PE20005A | .040" 48" x 96" Clear w/ Joggable Film               | 120/Skid |
| PE20006A | .060" 48" x 96" Clear w/ Joggable Film               | 160/Skid |
| PE50008A | .060" 48" x 96" Satin w/ Clear Hi-Tak/ Joggable Film | 120/Skid |
| PE50031A | .060" 48" x 96" Satin w/ Clear Hi Tak/ Joggable Film | 10 Pk    |
| PE22000A | .060" 60" x 96" Clear w/ Joggable Film               | 64/Skid  |
| PE20007A | .080" 48" x 96" Clear w/ Joggable Film               | 120/Skid |
| PE20009A | .100" 48" x 96" Clear w/ Joggable Film               | 100/Skid |
| PE20010A | .118" 48" x 96" Clear w/ Joggable Film               | 80/Skid  |
| PE22002A | .118" 60" x 96" Clear w/ Joggable Film               | 32/Skid  |
| PE20011A | .177" 48" x 96" Clear w/ Joggable Film               | 54/Skid  |
| PE22003A | .177" 60" x 96" Clear w/ Joggable Film               | 22/Skid  |
| PE20019A | .220" 48" x 96" Clear w/ Joggable Film               | 45/Skid  |
| PE20012A | .236" 48" x 96" Clear w/ Joggable Film               | 20/Skid  |
| PE20013A | .375" 48" x 96" Clear w/ Joggable Film               | 13/Skid  |
| PE21092A | .500" 48" x 96" Clear w/ MVM White Film              | 15/Skid  |
| PE20033A | .020" 48" x 72" Clear w/ Joggable Film               | 240/Skid |
| PE20034A | .030" 48" x 72" Clear w/ Joggable Film               | 170/Skid |
| PE20035A | .040" 48" x 72" Clear w/ Joggable Film               | 120/Skid |
| PE20039A | .060" 48" x 72" Clear w/ Joggable Film               | 160/Skid |



# ABS SHEET

## ABS Sheet

Utility Grade ABS (Acrylonitrile Butadiene Styrene) sheet is produced with only the highest quality recycled product and has a 100% virgin cap layer. Produced with a Haircell pattern on one side, and smooth finish on the reverse, ABS has excellent impact strength and formability.

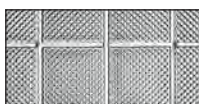
White and black ABS sheets are stocked in 48" x 96" sheet size, with custom colors and sizes available.



| Item #   | Description                             | Sq. Ft. | Quantity |
|----------|---|---------|----------|
| ABS2103C | White - Smooth/Haircell .060" 48" x 96" | 32      | 125 Bulk |
| ABS9900A | Black - Smooth/Haircell .060" 48" x 96" | 32      | 125 Bulk |
| ABS2104C | White - Smooth/Haircell .093" 48" x 96" | 32      | 75 Bulk  |
| ABS9901A | Black - Smooth/Haircell .093" 48" x 96" | 32      | 75 Bulk  |
| ABS2105C | White - Smooth/Haircell .118" 48" x 96" | 32      | 60 Bulk  |
| ABS9902A | Black - Smooth/Haircell .118" 48" x 96" | 32      | 60 Bulk  |
| ABS2106C | White - Smooth/Haircell .177" 48" x 96" | 32      | 40 Bulk  |
| ABS9903A | Black - Smooth/Haircell .177" 48" x 96" | 32      | 40 Bulk  |
| ABS2107C | White - Smooth/Haircell .236" 48" x 96" | 32      | 30 Bulk  |
| ABS9904A | Black - Smooth/Haircell .236" 48" x 96" | 32      | 30 Bulk  |

# LIGHTING SHEET

## Lighting Sheet



Prisma-Square



Prismatic clear & white



Cracked Ice clear & white



Egg Crate Louver white & metallic

### OPTIX Acrylic Lighting Panels

| Item #   | Description                         | Sq. Ft. | Qty.    |
|----------|-------------------------------------|---------|---------|
| 1A00702A | Prisma Square Clear 23.75" x 47.75" | 7.87    | 20 Pack |
| 1A20083A | Prismatic Clear 23.75" x 47.75"     | 7.87    | 20 Pack |
| 1A20084A | Prismatic White 23.75" x 47.75"     | 7.87    | 20 Pack |
| 1A30020A | Prismatic Clear 23.75" x 23.75"     | 3.91    | 25 Pack |
| 1420083A | Cracked Ice Clear 23.75" x 47.75"   | 7.87    | 20 Pack |
| 1420084A | Cracked Ice White 23.75" x 47.75"   | 7.87    | 20 Pack |
| 1405060A | Cracked Ice Clear 36" x 60"         | 15      | 10 Pack |
| 1405061A | Cracked Ice White 36" x 60"         | 15      | 10 Pack |
| 1435020A | Cracked Ice Clear 23.75" x 23.75"   | 3.91    | 25 Pack |

### Micro-Prism Acrylic Lighting Panels

| Item #      | Description                                   | Sq. Ft. | Qty.    |
|-------------|---|---------|---------|
| 1A90000A    | Micro Prism White Frost Glaze 23.75" x 47.75" | 7.87    | 20 Pack |
| 1A90001A    | Micro Prism Clear Frost Glaze 23.75" x 47.75" | 7.87    | 20 Pack |
| 671003-1-25 | Micro Prism Clear 23.75" x 47.75"             | 7.87    | 25 Pack |

### Styrene Louvers

| Item #   | Description  | Sq. Ft. | Qty.    |
|----------|--|---------|---------|
| 1199232A | Egg Crate White 1/2" x 1/2" x 3/8", 23.75" x 47.75"    | 7.87    | 5 Pack  |
| 1199241A | Egg Crate White 1/2" x 1/2" x 1/2", 23.75" x 47.75"    | 7.87    | 10 Pack |
| 1199238A | Egg Crate Metallic 1/2" x 1/2" x 3/8", 23.75" x 47.75" | 7.87    | 5 Pack  |
| 1199233A | Egg Crate White 1/2" x 1/2" x 3/8", 23.75" x 47.75"    | 7.87    | 15 Pack |
| 1199234A | Egg Crate Metallic 1/2" x 1/2" x 3/8", 23.75" x 47.75" | 7.87    | 15 Pack |

## DURALENS®

### Premium Grade Acrylic Lighting Panels

| Item #     | Description                          | Sq. Ft. | Qty.    |
|------------|--------------------------------------|---------|---------|
| 1430083A * | Cracked Ice Clear 23.75" x 47.75"    | 7.87    | 20 Pack |
| 1430084A * | Cracked Ice White 23.75" x 47.75"    | 7.87    | 20 Pack |
| 1A30084A * | PL21 Prismatic White 23.75" x 47.75" | 7.87    | 20 Pack |
| 1A30083A * | Prismatic Clear 23.75" x 47.75"      | 7.87    | 20 Pack |
| 1A00703A * | Prisma Square Clear 23.75" x 47.75"  | 7.87    | 20 Pack |

The above DURALENS lighting panels are covered by a 10-year limited replacement warranty against breakage.

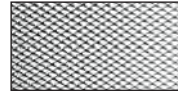
Visit [www.plaskolite.com/duralens\\_warranty](http://www.plaskolite.com/duralens_warranty) for details.

\* Denotes Consumer/Retail Item

# LIGHTING SHEET

## Lighting Sheet

Pattern 12 (PL-21) Prismatic patterned lighting sheet is available in clear, white, Frost and silvertint.



Pattern 12 (PL21)  
Prismatic



### Acrylic Prismatic Lighting Sheet 3/16" Square Base Female Conical Pattern

| Item #   | Description   | Sq. Ft. | Qty.     |
|----------|---|---------|----------|
| 225852-1 | Pattern 12 (PL-21) Prismatic Clear .095" 22.50" x 46.50"        | 7.27    | 20 Pack  |
| 225196-1 | Pattern 12 (PL-21) Prismatic Clear .095" 22.50" x 46.50"        | 7.27    | 300 Bulk |
| 225181-1 | Pattern 12 (PL-21) Prismatic Clear .095" 23.75" x 47.75"        | 7.87    | 300 Bulk |
| 225114-1 | Pattern 12 (PL-21) Prismatic Clear .095" 23.75" x 47.75"        | 7.87    | 20 Pack  |
| 225604-1 | Pattern 12 (PL-21) Prismatic Frost .095" 23.75" x 47.75"        | 7.87    | 300 Bulk |
| 225433-1 | Pattern 12 (PL-21) Prismatic Clear .095" 50" x 51"              | 17.72   | 250 Bulk |
| 225686-1 | Pattern 12 (PL-21) Prismatic Clear .095" 50" x 100"             | 34.75   | 100 Bulk |
| 225218-1 | Pattern 12 (PL-21) Prismatic Clear .110" 23.75" x 47.75"        | 7.87    | 300 Bulk |
| 225252-1 | Pattern 12 (PL-21) Prismatic Clear .110" 23.75" x 47.75"        | 7.87    | 20 Pack  |
| 225122-1 | Pattern 12 (PL-21) Prismatic Clear .110" 22.50" x 46.50"        | 7.27    | 20 Pack  |
| 225047-1 | Pattern 12 (PL-21) Prismatic Clear .110" 50" x 51"              | 17.72   | 300 Bulk |
| 225687-1 | Pattern 12 (PL-21) Prismatic Clear .110" 50" x 100"             | 34.75   | 100 Bulk |
| 225342-1 | Pattern 12 (PL-21) Prismatic Clear .125" 23.75" x 47.75"        | 7.87    | 250 Bulk |
| 225391-1 | Pattern 12 (PL-21) Prismatic Clear .125" 23.75" x 47.75"        | 7.87    | 25 Pack  |
| 1A2347PA | Pattern 12 (PL-21) Prismatic Clear .125" 23.75" x 47.75"        | 7.87    | 15 Pack  |
| 225734-1 | Pattern 12 (PL-21) Prismatic Clear .125" 22.50" x 46.50"        | 7.27    | 25 Pack  |
| 225354-1 | Pattern 12 (PL-21) Prismatic Clear .125" 50" x 51"              | 17.72   | 250 Bulk |
| 1A48484A | Pattern 12 (PL-21) Prismatic Clear .125" 48" x 96"              | 32      | 50 Bulk  |
| 1A48485A | Pattern 12 (PL-21) Prismatic Clear .125" 48" x 96"              | 32      | 5 Pack   |
| 225597-1 | Pattern 12 (PL-21) Prismatic Frost .125" 23.75" x 47.75"        | 7.87    | 250 Bulk |
| 225688-1 | Pattern 12 (PL-21) Prismatic Clear .125" 50" x 100"             | 34.75   | 80 Bulk  |
| 225231-1 | Pattern 12 (PL-21) Prismatic White .125" 50" x 100"             | 34.75   | 80 Bulk  |
| 225375-1 | Pattern 12 (PL-21) Prismatic Silvertint .125" 23.75" x 47.75"   | 7.87    | 25 Pack  |
| 225396-1 | Pattern 12 (PL-21) Prismatic Clear - .125" Min. 23.75" x 47.75" | 7.87    | 200 Bulk |
| 227001-1 | Pattern 12 (PL-21) Prismatic Clear - .156" 23.75" x 47.75"      | 7.87    | 200 Bulk |
| 225412-1 | Pattern 12 (PL-21) Prismatic Clear - .187" 23.75" x 47.75"      | 7.87    | 150 Bulk |
| 225430-1 | Pattern 12 (PL-21) Prismatic Clear - .187" 50" x 51"            | 17.72   | 150 Bulk |

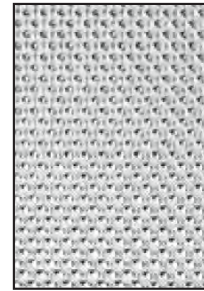
# KSH® LIGHTING LENS SERIES

## KSH® Lighting Lens Series

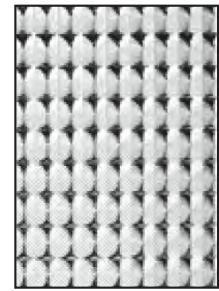
The KSH series of light controlling products from Plaskolite were designed to meet the requirements of today's sophisticated work environments. Each of the KSH lenses was designed to control and direct fluorescent and HID lighting, based on specific industry requirements, while maintaining a high level of visual comfort. In addition to the stock items, many lenses are available cut to your specifications. Call for details.

KSH Lighting Panel Series Color & Pattern Descriptions:

- UVALITE® - a matte finish that provides additional ultraviolet protection.
- UVALITE® Plus - a smooth finish that provides optimum ultraviolet protection.
- RF - Radio Frequency suppression to prevent interference in computing and testing equipment.
- ACRI-TUF® - 10-20 times stronger than standard acrylic panels.
- Silvertint - offers low brightness, increasing visual comfort.
- LED - provides optimum light transmission while eliminating undesired pinpoints of light.



**KSH-12**



**KSH-15**

### KSH® -12

An acrylic prismatic panel with a 3/16" square base female conical prism placed on a 45° axis. Straight sided prisms eliminate glare with increased lamp obscuration.

| Item #   | Description                                     | Sq. Ft. | Qty.     |
|----------|---|---------|----------|
| 125215-1 | KSH 12 Prismatic Clear .125" 23.75" x 47.75"    | 7.87    | 250 Bulk |
| 125000-1 | KSH 12 Prismatic Clear RF .125" 23.75" x 47.75" | 7.87    | 250 Bulk |
| 125012-1 | KSH 12 Prismatic Uvalite .125" 23.75" x 47.75"  | 7.87    | 250 Bulk |
| 125278-1 | KSH 12 Prismatic .125" Min. 23.75" x 47.75"     | 7.87    | 200 Bulk |
| 128145-1 | KSH 12 Prismatic ACRI-TUF .140" 23.75" x 47.75" | 7.87    | 200 Bulk |
| 128148-1 | KSH 12 Prismatic ACRI-TUF .187" 23.75" x 47.75" | 7.87    | 150 Bulk |

### KSH® -15

An acrylic prismatic panel with a bold 3/8" square base female conical prism placed parallel and perpendicular to the length and width of the panel.

The KSH-15 pattern panel provides:

- Excellent efficiency and direct glare control
- Suitable for use in large areas without objectionable sag

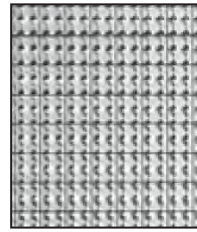
| Item #   | Description                                  | Sq. Ft. | Qty.     |
|----------|--|---------|----------|
| 155100-1 | KSH 15 Prismatic Clear .200" 23.75" x 47.75" | 7.87    | 150 Bulk |
| 155115-1 | KSH 15 Prismatic Clear .200" 50" x 51"       | 17.72   | 150 Bulk |
| 155112-1 | KSH 15 Prismatic Clear .200" 48" x 96"       | 32.12   | 50 Pack  |

# KSH® LIGHTING LENS SERIES

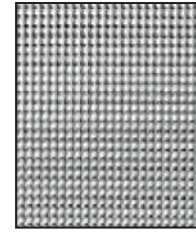
## KSH® Lighting Lens Series

### KSH®-19

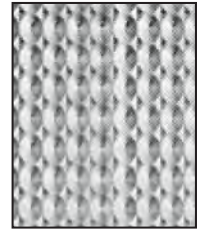
An acrylic prismatic panel with a 3/16" square base male conical prism placed parallel and perpendicular to the length and width of the panel. The Industry standard used to control high angled brightness and improve visual comfort.



KSH-19



KSH-20



KSH-23

| Item #   | Description                                       | Sq. Ft. | Qty.     |
|----------|---|---------|----------|
| 195121-1 | KSH 19 Prismatic Clear .156" 23.75" x 47.75"      | 7.87    | 20 Pack  |
| 195000-1 | KSH 19 Prismatic Clear RF .156" 23.75" x 47.75"   | 7.87    | 30 Pack  |
| 195130-1 | KSH 19 Prismatic Clear .156" 50" x 51"            | 17.72   | 200 Bulk |
| 195136-1 | KSH 19 Prismatic Silvertint .156" 23.75" x 47.75" | 7.87    | 20 Pack  |
| 195242-1 | KSH 19 Prismatic Clear .187" 23.75" x 47.75"      | 7.87    | 15 Pack  |
| 196032-1 | KSH 19 Prismatic Frost .156" 23.75" x 47.75"      | 7.87    | 200 Bulk |

### KSH®-20

An acrylic prismatic panel with a 1/8" square base male conical prism placed parallel and perpendicular to the length and width of the panel.

The KSH-20 panel provides:

- Excellent brightness control
- Soft surface appearance

| Item #   | Description                                  | Sq. Ft. | Qty.     |
|----------|--|---------|----------|
| 205100-1 | KSH 20 Prismatic Clear .140" 23.75" x 47.75" | 7.87    | 200 Bulk |

### KSH®-23

A clear acrylic lens with a unique combination of bold, shallow optics, providing excellent retention of the lens' surface texture and uniform surface appearance in fluorescent troffers. The truss-shaped prism design provides an economical solution to sagging lens problems.

The KSH-23 panel provides:

- High level of efficiency
- Eliminates lamp images
- Eliminates sagging

| Item #   | Description                        | Sq. Ft. | Qty.     |
|----------|------------------------------------|---------|----------|
| 235103-1 | KSH 23 Clear .100" 23.75" x 47.75" | 7.87    | 300 Bulk |
| 235133-1 | KSH 23 Clear .100" 50" x 51"       | 17.72   | 300 Bulk |
| 235250-1 | KSH 23 Frost .100" 23.75 x 47.75"  | 7.87    | 300 Bulk |

# KSH® LIGHTING LENS SERIES

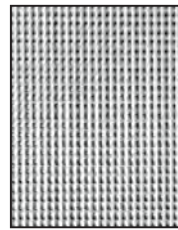
## KSH® Lighting Lens Series

### KSH®-32 CFL (Computer Friendly Lens)

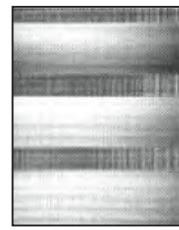
An acrylic lens that has a raised prismatic pattern of male cones running parallel and perpendicular to the length & width of the lens.

The KSH-32 panel provides:

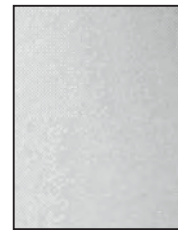
- Reduction in computer screen glare
- Good efficiency
- Excellent luminance control and lamp obscuration



**KSH-32 CFL**



**KSH-34 HSS**



**KSH-Overlay**

| Item #                               | Description | Sq. Ft. | Qty. |
|--------------------------------------|-------------|---------|------|
| Contact Plaskolite for availability. |             |         |      |

### KSH®-34 HSS (Hospital Surgical Suite)

The unique banded optic design of the acrylic lens requires a specific placement of the lamps in the luminaire. The lamps are arranged in 3 pairs of two lamps each, and are located over the male cone prism bands. To maximize the light output, the lamps are asymmetric about the luminaire centerline.

Specifically designed for supplemental surgical suite lighting, the scientifically placed male prismatic and linear lens elements provide an asymmetric distribution. This distribution directs maximum candle power to the surgical site as with typical luminaire layouts, while generously illuminating the surrounding areas.

| Item #   | Description                               | Sq. Ft. | Qty.    |
|----------|---|---------|---------|
| 236003-1 | KSH 34 HSS Clear RF .150" 22.75" x 47.75" | 7.54    | 20 Pack |

### KSH® Overlay

A high transmission acrylic panel used as an overlay to diffuse lamp images and provide more uniform surface brightness.

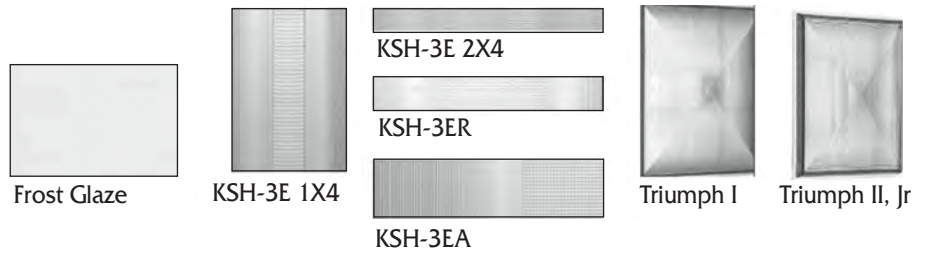
The KSH Overlay panel provides:

- Total lamp obscuration
- Reduced veiling reflections and reflected glare

| Item #   | Description                                  | Sq. Ft. | Qty.     |
|----------|--|---------|----------|
| 405118-1 | Overlay Matte Clear .040" 23.75" x 47.75"    | 7.87    | 35 Pack  |
| 405100-1 | Overlay Matte White .040" 23.75" x 47.75"    | 7.87    | 35 Pack  |
| 405112-1 | Overlay Matte White .040" 50" x 51"          | 17.72   | 750 Bulk |
| 315175-1 | Clear Uvalite Plus .060" 24" x 48"           | 8       | 250 Bulk |
| 405080-1 | Overlay Matte White LED .040" 23.75 x 47.75" | 7.87    | 750 Bulk |

# KSH® LIGHTING LENS SERIES

## KSH® Lighting Lens Series



### KSH® Frost Glaze

A mechanically textured white acrylic panel that has a heavy pebbled surface on one (down), and smooth on the other. The KSH White Frost Glaze Panel provides:

- Good light transmission and lamp obscuration

| Item #   | Description                                 | Sq. Ft. | Qty.     |
|----------|---|---------|----------|
| 535181-1 | KSH White Frost Glaze .080" 23.75" x 47.75" | 7.87    | 300 Bulk |
| 535186-1 | KSH White Frost Glaze .080" 50" x 51"       | 17.72   | 300 Bulk |
| 535005-1 | KSH White Frost Glaze .080" 50" x 110"      | 38.21   | 100 Bulk |
| 535191-1 | KSH White Frost Glaze .125" 23.75" x 47.75" | 7.87    | 250 Bulk |
| 535194-1 | KSH White Frost Glaze .125" 50" x 51"       | 17.72   | 250 Bulk |
| 535197-1 | KSH White Frost Glaze .187" 50" x 51"       | 17.72   | 150 Bulk |

### KSH®-3E / 3ER / 3EA

The KSH 3E Series of lighting lenses provide significant energy savings by reducing the number of lamps per fixture and by increasing the spacing between fixtures.

- KSH 3E 1X 4 - a computer designed lens for a one lamp fluorescent luminaire for energy saving lighting, with its widespread bi-symmetrical candlepower distribution making it ideal for coffer systems.
- KSH 3E 2X4 has a computer perfected blend of four optical bands that distribute candlepower to minimize ceiling reflections and increase task visibility.
- KSH 3ER - a scientific computer blend of 3 optical bands of female, elevating, and depressing prisms, designed for retrofitting a 4-lamp luminaire system to a 2-lamp. This conversion will save in operating costs, while maintaining 55-70% of the original footcandle levels.
- KSH 3EA - computer designed lens for one lamp fluorescent luminaire.

| Item #                               | Description | Sq. Ft. | Qty. |
|--------------------------------------|-------------|---------|------|
| Contact Plaskolite for availability. |             |         |      |

### TRIUMPH®

The Triumph series of lighting lenses are designed specifically for HID lighting.

- TRIUMPH I - a computer perfected lens that squares the conventional circular light spread resulting in a need for fewer fixtures and a reduction in energy costs.
- TRIUMPH II (JR) - provides an optical control device for low-wattage HID. The patented optics accept horizontal or vertical lamp placement and provide widespread spacing capabilities.

| Item #   | Description                                   | Sq. Ft. | Qty.    |
|----------|---|---------|---------|
| 735000-1 | Triumph I Clear Acrylic 22.25" x 22.25"       | 3.7     | 10 Pack |
| 739000-1 | Triumph I Clear Polycarbonate 22.25" x 22.25" | 3.7     | 10 Pack |
| 735003-1 | Triumph II Clear Acrylic 12" x 12"            | 1       | 20 Pack |
| 739003-1 | Triumph II Clear Polycarbonate 12" x 12"      | 1       | 20 Pack |

# EXTRUDED MIRROR ACRYLIC



## FABBACK® Extruded Clear Acrylic Mirror Sheet

FABBACK mirrored acrylic sheet is made with OPTIX continuously processed acrylic sheet. Mirrorizing is done by the process of vacuum metallizing with aluminum being the primary metal evaporated. FABBACK mirror acrylic sheet features the industry's toughest protective back-coating. The durability of this sheet makes it virtually scratch-resistant during fabrication.

Standard sheet is 48" x 96" but also non-stock sizes available in 36" x 60" to 80" x 120". Thicknesses range from .060"-.236". Please call for custom and non-stock sizes, thicknesses, availability, and delivery information.



### Clear Acrylic Mirror

| Item #               | Size  | Qty. | Skid Qty. |
|----------------------|---|------|-----------|
| <b>.060" (1.5mm)</b> |   |      |           |
| C400011M             | 48" x 96" Film 1 side                           | Bulk | 120       |
| <b>.080" (2.0mm)</b> |   |      |           |
| C500001M             | 48" x 96" Film 1 side                           | Bulk | 100       |
| <b>.118" (3.0mm)</b> |   |      |           |
| C100047M             | 48" x 96" Film 1 side                           | Bulk | 80        |
| C100048M             | 48" x 96" Film 1 side                           | Bulk | 40        |
| C100079M             | 48" x 96" Film 1 side/Papermask paint side      | Bulk | 80        |
| CP10076M             | 23 3/4" x 47 3/4" Film 1 side (mirror)          | Case | 5         |
| C100055M             | 48" x 96" Papermask 1 side (mirror)             | Bulk | 80        |
| C100049M             | 48" x 96" Papermask 1 side (mirror)             | Bulk | 40        |
| C100077M             | 48" x 96" Papermask 2 sides                     | Bulk | 80        |
| C100073M             | 48" x 96" Film 1 side                           | Case | 15        |
| C100816M             | 48" x 96.5" 3 mil laser poly                    | Bulk | 80        |
| C100828M             | 48" x 96.5" 3 mil laser poly/pressure sensitive | Bulk | 80        |
| C100075M             | 60" x 96" Film 1 side                           | Bulk | 80        |
| C100430M             | 72" x 96" Film 1 side                           | Bulk | 30        |

All mirrored acrylic sheet is produced with a 1" overage on length and width.

### Run-to-Size Available



# EXTRUDED MIRROR ACRYLIC



## FABBACK® Extruded Clear Acrylic Mirror Sheet

| Item #               | Size                        | Qty. | Skid Qty. |
|----------------------|-----------------------------|------|-----------|
| <b>.220" (5.6mm)</b> |                             |      |           |
| C800005M             | 48" x 96" Film 1 side       | Bulk | 25        |
| C800009M             | 48" x 96" Film 1 side       | Bulk | 50        |
| C800007M             | 48" x 96" Film 1 side       | Case | 12        |
| C800020M             | 48" x 96" Papermask 2 sides | Bulk | 50        |
| <b>.236" (6.0mm)</b> |                             |      |           |
| C200021M             | 48" x 96" Film 1 side       | Bulk | 40        |
| C200035M             | 48" x 96" Film 1 side       | Case | 10        |

### Protective Coverings

- 2 mil Polyfilm, 3 mil laser cuttable film or papermask.

### Protective Backings

- Pressure sensitive backing, papermask.
- See the Protective Coverings & Backings for Mirror Sheet section of this guide for more information.

### Services

- Router, laser, saw-cutting and die-cutting services offered. Call for quotation on availability and delivery information.
- See FABBACK mirror fabrication manual for specific handling and working instructions for mirror acrylic sheet.

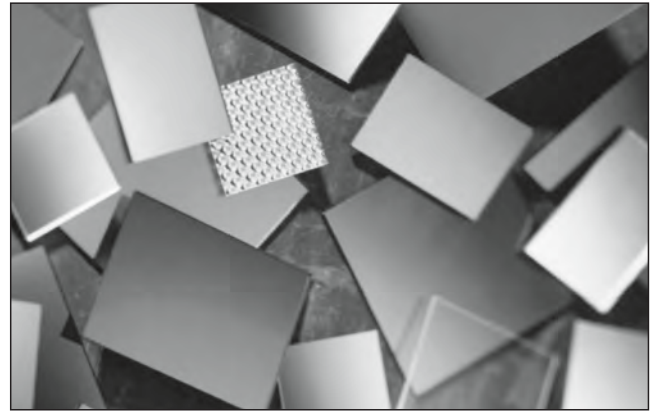
### Run-to-Size Available

# EXTRUDED MIRROR ACRYLIC COLOR



## FABBACK® Extruded Colored Acrylic Mirror Sheet

Plaskolite stocks FABBACK mirrored acrylic sheet in many brilliant colors in .118" (3.0mm) thickness. All mirror acrylic colored sheet is covered with a 3-mil laser-cuttable film. Different maskings available. 1" overage on our standard sheet is given for maximum yield in the laser cutting industry.



**Please call for custom colors and non-stock sizes.**

| Item #   | Thickness | Size        | Color       | Case Quantity | Skid Quantity |
|----------|-----------|-------------|-------------|---------------|---------------|
| C100518M | .118"     | 48" x 96.5" | 1000 Blue   | 15            | 80            |
| C100526M | .118"     | 48" x 96.5" | 2069 Blue   | 15            | 80            |
| C100941M | .118"     | 48" x 96.5" | 2424 Blue   | 15            | 80            |
| C100522M | .118"     | 48" x 96.5" | 1020 Purple | 15            | 80            |
| C100431M | .118"     | 48" x 96.5" | 1050 Gray   | 15            | 80            |
| C100083M | .118"     | 48" x 96.5" | 2064 Gray   | 15            | 80            |
| C100515M | .118"     | 48" x 96.5" | 1119 Orange | 15            | 80            |
| C100938M | .118"     | 48" x 96.5" | 1300 Gold   | 15            | 80            |
| C100494M | .118"     | 48" x 96.5" | 1310 Red    | 15            | 80            |
| C100529M | .118"     | 48" x 96.5" | 1400 Red    | 15            | 80            |
| C100527M | .118"     | 48" x 96.5" | 2423 Red    | 15            | 80            |
| C100046M | .118"     | 48" x 96.5" | 2404 Bronze | 15            | 80            |
| C100516M | .118"     | 48" x 96.5" | 1600 Bronze | 15            | 80            |
| C100947M | .118"     | 48" x 96.5" | 4674 Green  | 15            | 80            |
| C100525M | .118"     | 48" x 96.5" | 2414 Green  | 15            | 80            |
| C100521M | .118"     | 48" x 96.5" | 1450 Pink   | 15            | 80            |
| C100495M | .118"     | 48" x 96.5" | 2120 Teal   | 15            | 80            |
| C100514M | .118"     | 48" x 96.5" | 2208 Yellow | 15            | 80            |
| C100523M | .118"     | 48" x 96.5" | 2422 Amber  | 15            | 80            |

**.236" thickness available in 2404 Bronze and 2064 Gray.**

**Run-to-Size Available**

# MIRROR SHEET

## Marine Grade Acrylic Mirror Sheet

Marine Grade is a high quality, premium grade of FABBACK® acrylic mirror sheet. Double inspected throughout the manufacturing process to ensure maximum quality. Marine Grade is used in boat/yacht interior applications.

.118" and .236" thicknesses available in a 48" x 96" sheet size with a protective papermasking on 2 sides. Abrasion resistant coating, custom sizes, thickness and alternative protective masking options available.



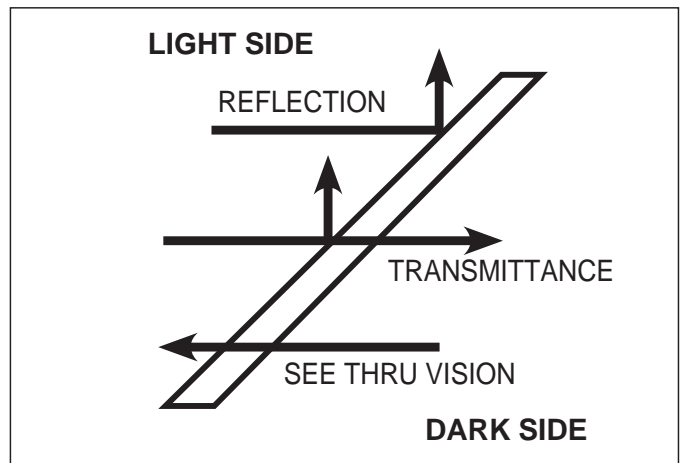
## Aircraft Grade Polycarbonate Mirror Sheet

Aircraft Grade polycarbonate mirror offers maximum quality and abrasion resistance. Specifically engineered for demanding aircraft applications, this highly reflective, lightweight material is shatter resistant and meets FAR 25.853 (a) flame retardant requirements. 48" x 96" sheet size is available in clear, bronzes and gray tints, in a thickness range from .080" to .118". Custom thickness and size options available.



## See-Thru Mirror Sheet

"See-thru" or "Two-Way" mirror has a semi-transparent aluminum film deposited on the substrate that allows a percentage of incident light to pass through, while reflecting the remainder. From the illuminated side, it's a mirror; from the darkened side it's transparent. This material is used in monitoring/surveillance, infinity lighting, multiple imaging and advertising applications. .118" and .236" thicknesses available in a 48" x 96" sheet size. See-Thru mirror is available in acrylic or polycarbonate with custom color, size and thickness options available.



## See-Thru Acrylic Mirror

| Item #   | Description                                  | Quantity  |
|----------|--|-----------|
| C100071M | 48" x 96" film .118" See-Thru Acrylic Mirror | 80/pallet |
| C200032M | 48" x 96" film .236" See-Thru Acrylic Mirror | 40/pallet |

## Run-to-Size Available

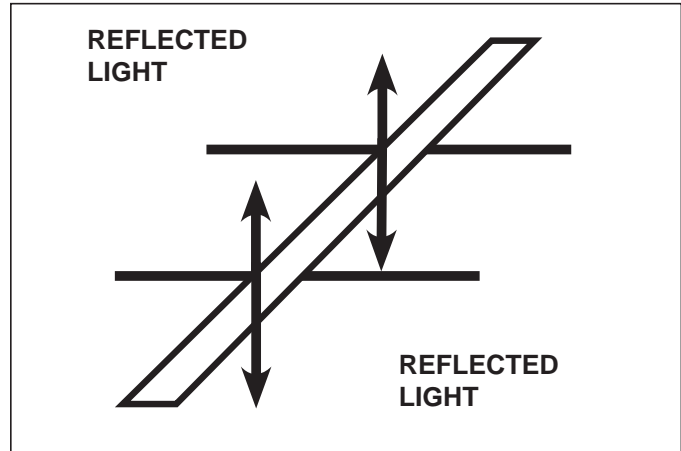
# MIRROR SHEET

## First Surface (2-Sided) Mirror Sheet

"First Surface" (two-sided mirror) consists of an opaque film of aluminum, protected by a tough clear coating. Light incident from either direction is reflected.

"First Surface" is often used in retail display and special lighting. The dual surface reflection property is ideal for those applications where the back side of the mirror will remain exposed, or where a reflection in both directions is desired. It is available in acrylic or polycarbonate and with a color option. Thicknesses of .118" and .236" offered.

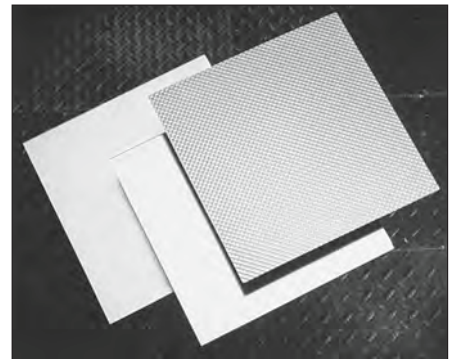
For custom and non-stock sizes and thicknesses, call for availability and delivery information.



| Item #   | Description                               | Quantity  |
|----------|---|-----------|
| C100069M | 48" x 96" Film .118" First Surface Mirror | 80/pallet |

## Textured Acrylic Mirror Sheet

Interesting textures for special design needs. Available in .125" thickness in 48" x 96" sheet. For custom and non-stock sizes and thicknesses, call for availability.



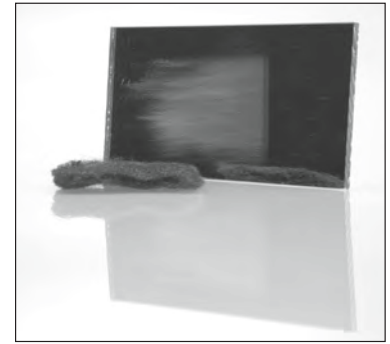
| Item #   | Pattern         | Size      | Case Quantity | Skid Quantity |
|----------|-----------------|-----------|---------------|---------------|
| C100683M | Non-Glare       | 48" x 96" | 15            | 80            |
| C100607M | PL-21 Prismatic | 48" x 96" | 15            | 80            |

## Run-to-Size Available

# ARMADILLO COATING

## ARmadillo Scratch-Resistant Coating

Plaskolite's "ARmadillo" scratch-resistant coating is available on mirror acrylic, non-mirror acrylic, polycarbonate; and in many colors and thicknesses. Ideal for applications that require abrasion, stain and solvent resistance, such as, retail displays, table tops, door panels and other applications that are exposed to high traffic. "ARmadillo" can also be written upon with erasable markers, making it useful in scheduling boards and restaurant menu applications. The coating is available on one or two sides. Please call for availability and delivery information on custom and non-stock items.



### Abrasion Resistance Test

| Test Method  | Change in Haze/ASTM D-1003 |              |
|--|----------------------------|--------------|
|  | Uncoated Polycarbonate     | ARmadillo    |
| Steel Wool Rotary Test 12 and 15 psi 5 revolutions | 25%                        | less than 1% |
| Taber Abrasion 500 grams - 100 revolutions         | 37%                        | less than 5% |
| Eraser Abrasion                                    | N.A.                       | 0 rating     |

### Chemical Resistance

| Test Method   | Results             |
|---|---------------------|
| <b>Soft Cloth Soaked with:</b><br>1) Ammonium Hydroxide (100%)<br>2) Hydrochloric Acid<br>3) Acetone<br>4) Kerosene<br>5) Toluene<br>Vigorous rub for 2 minutes | 0.0% change in haze |

### Scratch Resistant Acrylic Sheet

| Item #   | Description   |
|----------|---|
| C100060M | *AR-1 48" x 96" .118" Acrylic Mirror Paper 1 side       |
| C100061M | *AR-1 48" x 96" .118" Acrylic Non-Mirror Paper 1 side   |
| C100063M | **AR-2 48" x 96" .118" Acrylic Non-Mirror Paper 2 sides |

\* AR-1 - Coated one side

\*\* AR-2 - Coated two sides

### Run-to-Size Available

# PETG MIRROR SHEET

## PETG Mirror Sheet

PETG Mirror offers versatile fabrication properties with good impact strength, good design flexibility and speed of fabrication.

PETG Mirror is available in .040"-.118", in 48" x 96" sheet. The thinner gauge sheet is ideal for the fabrication of children's toys, cosmetic uses, and office supplies.

PETG Mirror is supplied in 1-sided polyfilm or papermask 1 or 2 sides. Call for quotation, availability and delivery information.



| Property                         | ASTM             | Units      | Value                 |
|----------------------------------|------------------|------------|-----------------------|
| Specific Gravity                 | D-792            | —          | 1.27                  |
| Gardner Impact Strength          | D-3029 or D-5420 | —          | No break, 300 in/lbs. |
| Flexural Strength                | D-790            | psi        | 11,240                |
| Flexural Modulus                 | D-790            | psi        | 309,000               |
| Tensile Strength                 | D-638            | psi        | 6,990                 |
| Tensile Modulus                  | D-638            | psi        | 301,000               |
| Elongation .125 in. thick        | —                | %          | 75                    |
| Dielectric Constant              | D-150            | @100Hz     | 3.46                  |
| Dielectric Strength              | D-149            | volts/mil  | 420                   |
| Volume Resistivity               | D-257            | ohms/cm    | $6.0 \times 10^{15}$  |
| Heat Distortion Temp. 264 psi    | D-648            | °F         | 145                   |
| Heat Distortion Temp. 66 psi     | D-648            | °F         | 164                   |
| Vicat Softening Point            | D-1525           | °F         | 180                   |
| Coefficient of Thermal Expansion | D-696            | in/(in-°F) | 0.00003               |

## Run-to-Size Available

# POLYCARBONATE MIRROR SHEET

## Polycarbonate Mirror Sheet

Plaskolite offers polycarbonate mirror sheet for better strength, security and flame resistance. Polycarbonate mirror is available in .118" and .236" in 48" x 96" sheet. Plaskolite also offers this in See-Thru, First Surface and ARmadillo scratch-resistant sheet. Bronze and Gray available in 118". This material is supplied in papermask 2 sides.

Call for quotation, availability and delivery information.



| Item #   | Size                              | Qty. | Skid Qty. |
|----------|-----------------------------------|------|-----------|
| P100002M | .118" 48" x 96" Papermask 2 sides | Bulk | 40        |
| P200002M | .236" 48" x 96" Papermask 2 sides | Bulk | 40        |

| Property                            | Test Method | Units                           | All Grades              |
|-------------------------------------|-------------|---------------------------------|-------------------------|
| <b>General</b>                      |             |                                 |                         |
| Specific Gravity                    | D-792       | %                               | 1.2                     |
| Water Absorption                    | D-570       |                                 | 0.15                    |
| <b>Thermal</b>                      |             |                                 |                         |
| Deflection Temperature              |             |                                 |                         |
| 264 psi                             | D-648       | °F                              | 270                     |
| 66 psi                              |             |                                 | 280                     |
| Coefficient of Thermal Expansion    | D-696       | in/(in-°F)                      | 3.75 x 10 <sup>-5</sup> |
| Coefficient of Thermal Conductivity | C-177       | Btu-ft (hr-ft <sup>2</sup> -°F) | 0.1125                  |
| <b>Mechanical</b>                   |             |                                 |                         |
| Tensile Strength, Yield             | D-638       | psi                             | 9,000                   |
| Tensile Strength, Ultimate          |             |                                 | 9,500                   |
| Tensile Modulus                     |             |                                 | 345,000                 |
| Compressive Strength                | D-695       | psi                             | 12,500                  |
| Flexural Strength                   | D-790       | psi                             | 13,500                  |
| Flexural Modulus                    |             |                                 | 345,000                 |
| Izod Impact Strength                | D-256       | ft.-lb/in. Notch                | 12-16                   |
| Gardner Impact (1/2" Diameter Dart) | D-5420      | lb-in.                          | >320                    |
| <b>Flammability</b>                 |             |                                 |                         |
| Horizontal Extent of Burning        | D-635       | in.                             | <1                      |
| Horizontal Time of Burning          |             | min.                            | <1                      |
| Self Ignition Temperature           | D-1929      | °F                              | 1077                    |
| Flash Ignition Temperature          |             |                                 | 872                     |

## Run-to-Size Available

# PROTECTIVE COVERINGS & BACKINGS

## Protective Coverings & Backings for Mirror Sheet

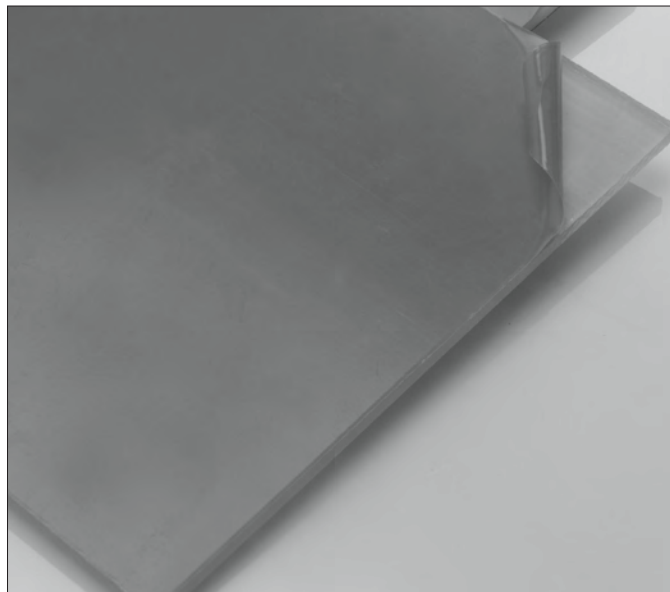
Plaskolite offers a variety of protective coverings and backings for acrylic, polycarbonate and PETG mirror sheet products where extra protection or added performance is required.

### Protective Coverings

- **Film** - 2 mil clear or blue protective co-ex film offered standard on all stock items. 3 mil film also available.
- **Papermask** - White or brown papermask available on one side or two sides.

### Backings

- **FABBACK®** - FABBACK is the gray paint backing on all of our mirrored sheet products. This backing is the most durable, toughest scratch-resistant backing in the acrylic mirror industry. Offered on all acrylic, polycarbonate & PETG mirror sheet products.
- **Papermask** - White or brown papermask available as additional protection over the FABBACK for ease of handling, fabrication and working with mirror sheet.
- **Pressure Sensitive** - This adhesive backing is used to mount mirror sheet to another substrate or surface. It is a white paper backing that transfers an adhesive on the sheet once the white paper is pulled off. Mounting a mirror becomes a simple procedure of cutting to a desired size or shape, peeling off the release paper and carefully pressing in place. There is a caution, however, the mirror cannot be moved or adjusted after being pressed in position, so extreme care is required in the placement. This replaces adhesives applied by hand that can cause messy edges and non-uniform adhesive coverage.



**For best results, we recommend sealing the surface to which the mirror is to be applied with a good quality paint or sealer. A flat, smooth surface is preferred.**

**The pressure sensitive backing is available on acrylic, polycarbonate, and PETG mirror sheet.**

**Run-to-Size Available**



# TERMS & CONDITIONS



## Plaskolite, LLC. Limited Warranty

### Statement of warranty

This Warranty is given ONLY to the IMMEDIATE PURCHASER who buys for commercial use in the ordinary course of such purchaser's business (the "Purchaser").

Plaskolite, LLC. ("Plaskolite") warrants to the Purchaser that the Yellowness Index (YI) on Plaskolite clear acrylic (the "Product") shall be less than 4.0 during a 10 year period from the date of purchase (the "Warranty Period") as measured with a Hunter Lab Spectrocolorimeter according to ASTM D1925, subject to the limitations set forth herein. This Warranty applies to the Product exposed to ultraviolet rays in normal interior and exterior applications, which shall exclude extreme weather conditions. This Warranty is in addition to the warranty regarding conformance of Plaskolite material with Plaskolite's specifications set forth in Plaskolite's Terms and Conditions (the "Specification Warranty").

### Obtaining warranty performance

If the Product fails to conform to this Warranty, the Purchaser may, within the Warranty Period, and no later than thirty (30) days following discovery of the failure to conform to this Warranty, send written notice of such failure to conform to this Warranty along with proof of purchase to Plaskolite, LLC, Industrial Division, P.O. Box 1497, Columbus, Ohio 43216. Upon receipt of the written notice, Plaskolite will, at its sole option, (i) replace that portion of the Product that failed to conform to this Warranty or (ii) refund the purchase price of that portion of the Product that failed to conform to this Warranty. Plaskolite will not be responsible for any costs of removing any portion of the Product that failed to conform to this Warranty or of reinstalling the replacement. Replacement or refund as described herein is the Purchaser's sole and exclusive remedy for failure of any part of the Product to conform to this Warranty, or any warranty which may arise by contract or operation of law. Repair or replacement of any part of the Product that failed to conform to this Warranty does not extend the Warranty Period.

### Limitations and disclaimers

To the extent permitted by law, and subject to the Specification Warranty, THIS WARRANTY IS EXCLUSIVE, IN LIEU OF AND EXCLUDES ALL OTHER WARRANTIES, EXPRESS OR IMPLIED, INCLUDING MERCHANTABILITY AND FITNESS FOR A PARTICULAR PURPOSE. To the extent permitted by law, PLASKOLITE'S LIABILITY IS LIMITED SOLELY AND EXCLUSIVELY TO REPAIR OR REPLACEMENT AS SET FORTH HEREIN AND DOES NOT INCLUDE ANY LIABILITY WHATSOEVER FOR ANY INCIDENTAL, CONSEQUENTIAL OR OTHER DAMAGES OF ANY

KIND WHATSOEVER, WHETHER A CLAIM IS BASED UPON A THEORY OF CONTRACT, NEGLIGENCE OR TORT.

This Warranty is made only to Purchaser and is not transferable. No employee, agent or other person is authorized by Plaskolite to assume for Plaskolite any liability in addition to that set forth herein or to make any further warranties on Plaskolite's behalf. This Warranty is void and of no effect if any of the above exclusions apply.

### Miscellaneous

This Warranty may be supplemented or changed from time to time. In the event that any provision of this Warranty should be or become invalid and/or unenforceable during the Warranty Period, the remaining terms and provisions hereof shall continue in full force and effect. This Warranty is given in, and is intended to be construed under the internal laws of, the State of Ohio.

# TERMS & CONDITIONS

## Plaskolite, LLC. Terms & Conditions

### 1. Terms exclusive:

This document, together with the agreements, if any, specified herein, and including the terms and conditions on the reverse hereof, constitutes the complete, exclusive and final agreement of the Buyer identified herein ("Buyer") and Plaskolite, LLC. ("Seller") and may not be added to, modified, superseded or altered except by written agreement or modification signed by Seller's authorized representative, notwithstanding any other additional or modifying terms or conditions which may now or in the future appear on Buyer's order, acknowledgment or other forms (all of which are objected to by Seller without future notification), and notwithstanding any shipments, tenders of delivery, acceptance of payments, or other similar acts of Seller. Buyer's acceptance of any performance by Seller shall be taken as Buyer's acceptance of these terms and conditions  
NO PERSON (EXCEPT AN AUTHORIZED OFFICER OF SELLER) IS AUTHORIZED TO BIND SELLER TO ANY ORDER EXCEPT ACCORDING TO THE TERMS AND CONDITIONS ON BOTH SIDES HEREOF. ACCEPTANCE OF ANY ORDER IS SUBJECT TO FINAL CREDIT APPROVAL BY SELLER.

### 2. Delivery:

Unless otherwise specified herein, delivery of the goods, and services. If any, specified herein ("Goods") shall be F.O.B. point of shipment. Any delivery date specified herein is approximate only. Seller assumes no liability for failure or delay in performance until 5 days after written notice of intention to cancel shall have actually been received by Seller, and Buyer shall be obligated to accept any conforming Goods shipped by Seller during such period. Acceptance of shipment by a common carrier, designated shipper or licensed public truckman, or allocation of Goods to Buyer at premises other than Seller's delivery to Buyer's representative or designee (if Seller's trucks and drivers effect such delivery), or mailing of an invoice by Seller to Buyer, whichever of the foregoing first occurs, shall constitute tender of delivery. Upon tender of delivery, title shall pass to Buyer, subject to Seller's right of stoppage in transit and to any interest of Seller reserved to secure Buyer's payment or performance. In the instance of Goods held subject to Buyer's instructions, Goods for which Buyer has failed to supply shipping instructions, or in any case where Seller, in its sole discretion, determines any part of the Goods should be held for Buyer's account, Seller may invoice the Goods and Buyer agrees to make payment at the maturity of the invoice so rendered. Goods invoiced and held at any location, for whatever reason, shall be at Buyer's risk and Seller may charge for (but is not obligated to carry) insurance and storage at prevailing rates. Partial deliveries shall be accepted by Buyer and paid for at contract prices and terms. When Buyer has declared or manifested an intention not to accept delivery in accordance with any order, no tender shall be necessary but Seller may, at its option, give notice in writing to Buyer that Seller is ready and willing to deliver and such notice shall constitute a valid tender of delivery.

### 3. Prices:

All prices of the Goods are subject to change or withdrawal without notice. Unless otherwise stated by Seller, prices and pricing policies will be those set forth in Seller's published price lists or Seller's pricing policies in effect at time of delivery. In the event Buyer's order is changed in any respect (if and when permitted by Seller), Seller may adjust the price accordingly. Unless otherwise specified herein, prices are exclusive of any excise, sales, use or similar taxes, duties, quotation fees or other governmental impositions which Seller may be required to pay or collect under any existing or future law upon or with respect to the sale, use, storage, consumption, purchase, transportation or delivery of the Goods and any such applicable taxes, etc., shall be paid by and/or for the account of Buyer.

### 4. Payment, security interest:

Unless otherwise stated herein by Seller, the terms of payment shall be one percent 10 days, net 30 days. Such (or any other) discount terms shall be strictly enforced by Seller. If at any time in Seller's reasonable discretion, Buyer's credit should become unsatisfactory to Seller, cash payments on delivery or other satisfactory security, including security for outstanding balances, may be required of Buyer by Seller as a condition to further deliveries. All installment deliveries shall be separately invoiced and paid for when due. Any payment not made to Seller when due shall be subject to a carrying charge of one and one half percent (1 1/2%) per month on the unpaid balance until paid and Seller may defer further deliveries to Buyer under this order or any other order between Buyer and Seller, or may cancel the undelivered balance or balances under this or any such other order. Buyer shall have no right to offset any amount whatsoever against any payment or other obligation which Buyer may owe to Seller under this order. Seller reserves a security interest in the Goods to secure Buyer's payment of the purchase price and any other charges owed by Buyer, and Buyer agrees that Seller may (but is not obligated to) take such action as Seller deems advisable to evidence and perfect such interest and that Buyer will cooperate with Seller in taking such actions, and Buyer hereby authorizes Seller to file financing statements. All payments shall be made payable to the order of (Plaskolite, LLC, P.O. Box 636087, Cincinnati, OH 45263-6087).

### 5. Casualty and availability of supplies:

Delivery of all or any part of the Goods is contingent upon Seller's ability to obtain goods (including the Goods), supplies, raw materials and services through its regular and usual sources of supply. If by reason of any contingency beyond Seller's control, including (but not limited to) war, terrorist activities or threats, governmental requests, restrictions or regulations, fire, flood, casualty, accident, or other acts of God, strikes or other difficulties with employees, delay or inability to obtain goods (including the Goods), labor, equipment, material and service through Seller's usual sources, failure or refusal of any carrier to transport materials, delay in transport thereof,

# TERMS & CONDITIONS

or any other similar occurrence, Seller is not able to meet anticipated deliveries. Seller shall not be liable therefore and may, in its discretion without prior notice to Buyer, postpone the delivery date(s) for a time which is reasonable under all the circumstances.

## **6. Inspections, acceptance, and returns:**

Each delivery of Goods shall be inspected by Buyer for observable damage and/or non-conformity at the time of delivery. Failure to so inspect shall constitute a waiver of Buyer's rights of inspection and shall constitute an unqualified acceptance of the Goods. If, after such inspection, Buyer attempts to reject any Goods, Buyer shall fully specify all claimed damage or non-conformity in a notice of rejection sent to Seller within ten days of Buyer's receipt of the Goods. Buyer's failure to so specify shall constitute an unqualified acceptance of the Goods and a waiver of that damage or non-conformity. No Goods shall be returned to Seller without Seller's prior written agreement and any Goods returned by Buyer shall be returned in the same condition as when delivery was effected by Seller. No deductions for shortages, damages or defective Goods will be allowed without Seller's inspection of the Goods and approval of the deduction. Unauthorized deductions may affect the status of Buyer's account with Seller. Orders entered on Seller's books cannot be countermanded nor deliveries deferred or Goods returned except upon Seller's written consent and upon terms that will indemnify Seller against loss. If Goods are defective, Seller will bear the cost associated with return and restocking. If Goods are not defective, and Seller agrees to accept return of Goods, a minimum of costs of restocking (15%) plus actual cost of return freight will be deducted from any credit due Buyer.

## **7. Patents, etc.:**

Buyer will defend, indemnify and hold harmless Seller, its successors and assigns from and against any and all claims, demands, lawsuits, liability and judgment for loss, costs, damages, fines, penalties and expenses of every kind and nature, threatened, incurred, arising out of or in connection with any alleged infringement of any patent, issued by any country, by any Goods supplied by Seller hereunder and made specially for Buyer; provided that Seller shall give prompt notice to Buyer of any such claim etc. and an opportunity to settle or defend the same as Buyer may see fit; and provided further that Seller shall render every reasonable assistance which Buyer may require of it in connection with such claims, etc. Seller reserves the right to cancel this order, without liability with respect to any Goods, the manufacture, sale and use of which in the opinion of Seller would infringe any patents now or hereafter issued.

## **8. Limited warranty, warranty disclaimers and limitations of remedies and liabilities:**

Seller warrants that the Goods will conform (subject to variations acceptable within the industry) to the specifications set forth

herein. Any Goods determined by Seller to have been defective or not in accordance herewith at time of delivery will be replaced or credited, at Seller's option, provided Buyer has acted in accordance with Paragraph 6 hereof. No item shall be deemed defective or not in accordance herewith if such item conforms to approval samples or previously accepted materials or if such item fits Buyer's parts, jigs, or equipment or otherwise reasonably accommodates the purpose for which the goods are generally intended.

Except as set forth above, Seller make NO OTHER WARRANTIES concerning the Goods whatsoever. SELLER DISCLAIMS AND EXCLUDES ALL OTHER EXPRESS WARRANTIES AND ALL IMPLIED WARRANTIES, INCLUDING WITHOUT LIMITATION THE IMPLIED WARRANTIES OF MERCHANTABILITY AND FITNESS FOR A PARTICULAR PURPOSE concerning the Goods. Buyer acknowledges and agrees that Seller's obligation described in this Paragraph 8 is the sole remedy bargained for by Buyer IN LIEU OF ALL OTHER EXPRESS AND IMPLIED WARRANTIES. In no event will Seller's liability exceed the paid purchase price of the Goods. Seller's obligations described in this Paragraph 8 shall be BUYER'S SOLE AND EXCLUSIVE REMEDY AGAINST SELLER FOR ANY LIABILITY WITH RESPECT TO THE GOODS WHETHER ANY CLAIM FOR RECOVERY IS BASED UPON OR ARISES OUT OF THEORIES OF CONTRACT, NEGLIGENCE, TORT (INCLUDING STRICT LIABILITY) OR OTHERWISE. Buyer agrees that NO OTHER REMEDY SHALL BE AVAILABLE to Buyer and IN NO EVENT SHALL SELLER BE LIABLE FOR ANY INCIDENTAL OR CONSEQUENTIAL DAMAGES, including without limitation loss of income, loss of time, loss of sales, cost of replacement items, claims asserted by Buyer's customers, injury to personal property, or injury to any person, whether or not occasioned by Seller's negligence. Buyer agrees to indemnify and hold harmless Seller from any claims brought by Buyer's customers against Seller regarding the Goods, even if such customers have a statutory or other right to assert such claims.

## **9. Statutory compliance:**

Seller continues to attempt to comply with all applicable laws, standards and specifications. However, Seller is not responsible for compliance with any laws, standards or specifications applicable to the Goods, their delivery, use, handling, labeling, transportation or disposal, whether of general or particular application, unless Buyer has furnished specific written notice thereof prior to Seller's entry of Buyer's order.

## **10. Product labels, information:**

Buyer acknowledges that it has received and is familiar with Seller's and any manufacturer's labeling and literature concerning the Goods and will forward such information to its employees, agents, and customers.

# TERMS & CONDITIONS

## 11. Permissible variations:

Seller has the right, without giving notice to Buyer, prior to the delivery of Goods to Buyer to make any changes in the composition of the Goods which, in the opinion of Seller, do not affect the general characteristics of properties to the Goods. In addition, Seller may make any change or variation in the Goods which is within governmental or industry standards or specifications applicable at the time of manufacture without giving notice to Buyer. Buyer will accept any Goods which may incorporate any changes in the composition or specifications, and any increase in price resulting from such change will be paid by Buyer. In addition, if the Goods to be supplied by Seller to Buyer hereunder shall be made specifically for Buyer and are not customarily carried in stock by Seller, then a ten percent (10%) overage or underage in delivery of the amount specified herein shall constitute fulfillment of the order and such Goods delivered will be paid for at the unit price specified herein.

## 12. Cancellation:

Seller may cancel or terminate all or part of the contract arising from or evidenced by this document immediately upon the happening of any of the following: Buyer's material delinquency of any of its obligations hereunder or with respect to any other order or transaction with Seller; the insolvency of Buyer; the commencement on any case under Title 11 U.S.C., as amended (the "Bankruptcy Code"), or similar law of another country for, by or against Buyer; the appointment of a receiver for Buyer under any applicable law; Buyer's suspension or termination of business or assignment for the benefit of creditors; or any event, whether or not similar to the foregoing, which in Seller's good faith belief materially impairs the prospect of payment or performance by Buyer hereunder. Seller's rights to cancel or terminate set forth herein may be exercised by Seller without liability.

## 13. Representations by agent or representative:

The terms of this document shall govern the liability and obligations of Seller in regard to the sale of Goods, whether the sale was procured directly by Seller or indirectly through an authorized sales representative. No agent, employee or representative of Seller has any authority to bind Seller to any additional or contrary affirmation or representation concerning the Goods sold under this document. Unless an affirmation or representation is specifically included within this document or is in writing signed by an authorized officer of Seller, it shall not be enforceable by Buyer or by any person claiming by or through Buyer. The ORAL REPRESENTATIONS of Seller's agents and employees DO NOT CONSTITUTE WARRANTIES and do not constitute part of the contract evidenced by this document.

## 14. Miscellaneous:

All sales are subject to approval by Seller's credit department. The contract evidenced hereby will be governed by the local laws of the State of Ohio. If any of the provisions hereof shall be

held invalid, illegal or unenforceable, the validity, legality, and enforceability of the remaining provisions shall in no way be affected or impaired thereby.

BUYER CONSENTS AND SUBMITS TO THE SOLE EXERCISE OF JURISDICTION BY ANY COURT OF COMPETENT JURISDICTION LOCATED IN FRANKLIN COUNTY, OHIO.

No right or interest in the contract evidenced by this document shall be assigned by Buyer and no delegation of any obligation owed by Buyer shall be made without prior written permission of Seller.

The individual rights and remedies of Seller reserved herein shall be cumulative and additional to any other or further remedies provided in law or equity. Waiver by Seller of performance or inaction with respect to Buyer's breach of any provision hereof, or failure of Seller to enforce any provision hereof which may establish a defense or limitation of liability, shall not be deemed a waiver of future compliance therewith or a course of performance modifying such provision, and such provision shall remain in full force and effect as written.

As used herein, "Buyer" and "Seller" include the respective heirs, executors, personal representatives, successors and permitted assigns or each.

Monetary denominations designated herein shall be in U.S. Dollars.

Notwithstanding anything herein to the contrary, the United Nations Convention on Contracts for the International Sale of Goods and the laws of any other jurisdiction shall have no application to the terms and conditions of sale and the actions hereunder and contemplated hereby.

IN ALL CASES CLERICAL ERRORS ARE SUBJECT TO CORRECTION.

## 15. Buyer's obligation to purchase specially manufactured material:

If all or any part of the material to be supplied to Buyer was specially manufactured by Seller for sale to Buyer, then notwithstanding the application of force majeure or Buyer's failure to issue a release for such material, Buyer shall be required to purchase material plus or minus 10% of the original order quantity, and accept delivery of all such material, and any raw material or intermediary procured or produced for manufacture of same. All finished material will be purchased at the price then prevailing. Raw material or intermediaries will be purchased at Seller's cost of procurement or production.

# WORLDWIDE SUPPORT

## Worldwide Support

Plaskolite maintains manufacturing and distribution facilities in Columbus, OH; Zanesville, OH; Compton, CA; Ontario, CA; Olive Branch, MS; Monterrey, MX; Grand Saline, TX; and Doesburg, Holland, for fast product delivery and local support of its distributor network.



### \*Columbus, Ohio, USA

Manufacturing and Distribution Headquarters



### \*Zanesville, Ohio, USA

Manufacturing and Distribution



### Compton, California, USA

Manufacturing



### Redlands, California, USA

Distribution



### Olive Branch, Mississippi, USA

Manufacturing and Distribution



### Monterrey, Mexico

Manufacturing and Distribution



### Grand Saline, Texas, USA

Manufacturing and Distribution



### Doesburg, Holland

Distribution

\*Plaskolite's Quality Management System is certified as being in conformance with the ISO9001:2008 standard. Please contact Plaskolite for technical and distribution information.



## PLASKOLITE

P.O. BOX 1497 • COLUMBUS, OHIO 43216 • (614) 294-3281

FAX (877) 538-0754

Email: [plaskolite@plaskolite.com](mailto:plaskolite@plaskolite.com) • Website: [www.plaskolite.com](http://www.plaskolite.com)

For the location of the Plaskolite Distributor nearest you, call

**1-800-848-9124**

Copyright © Plaskolite, LLC.

2/18

Printed in U.S.A.

OPTIX®, DURAPLEX®, DURALENS®, FABBACK®, KSH®, and VIVAK® are registered trademarks of PLASKOLITE, LLC.