



2013 PRODUCT CATALOG



LOCATED IN BOULDER, COLORADO, USA

OUR HISTORY

CEO and Founder Rick Case started Nite Ize as an undergraduate at the University of Colorado in 1989. “I was on a fishing trip using the brand new mini flashlight my family gave me as a gift. I was fishing at night with it, holding it in my mouth. Sure enough, I opened my mouth, and the flashlight fell out. I was staring down into the water, watching my still lit flashlight on the bottom when an idea hit me. That idea became the first product I ever made, the Headband Mini Flashlight Holder.”



Case, who embodies the very essence of entrepreneurial spirit, built his successful company through dedication, inspiration and hard work. He was running the company from his mountain cabin when he received his first order for 42,000 Headbands. Twenty-four years later, Nite Ize continues to expand with a large manufacturing facility and corporate offices based out of beautiful Boulder, Colorado. Case remarked recently, “You have to be passionate, have faith in what you are doing, and be persistent.”

In the years that have passed since that fishing trip, Nite Ize has grown from one bright idea into a company that makes and sells a wide variety of accessories, tools, and devices. Every product we offer is designed with creative innovation for superior functionality, manufactured with top-of-the-line materials for optimum durability, and here to make your life easier, safer, and a little more fun—day and night.



WHAT WE DO

The mission of Nite Ize is to create innovative, solution-based products with quality, performance, and value at the core. We strive to exceed our customers' expectations in every way possible while conducting business with integrity, honesty, and respect for our team members, customers and partners.

WHERE WE ARE GOING

Innovation inspired the idea that has become Nite Ize, and will continue to drive our evolution into the future.

As we grow, our vision is to build the Nite Ize brand to be recognized for imaginative products that make our customers' lives easier, safer, and more fun.

Our success should always be measured by the ongoing enthusiasm for Nite Ize products, our customers' satisfaction, the development of our team and a minimal environmental impact.

WHO WE ARE

Nite Ize is built on the dedication and enthusiasm of our staff. We are ordinary people working together to achieve extraordinary results.

These core values define our interaction with one another and our customers:

- ⊕ Persistence
- ⊕ Ownership
- ⊕ Integrity
- ⊕ Problem Solving

TABLE OF CONTENTS

HARDWARE (PAGE 04)

- Gear Tie Technology
- S-Biners
- Key Accessories
- Tie-Downs + Bungees

LED (PAGE 10)

- Visibility + Safety
- Illumination
- Bike
- Pet
- Toys + Games

FLASHLIGHT ACCESSORIES (PAGE 24)

- LED Upgrades
- Holsters + Mounts

MOBILE ACCESSORIES (PAGE 30)

- Accessories for iPhone
- Universal Holsters
- Cord Organizers

INOVA + INKA PRODUCTS (PAGE 36)

MERCHANDISING DISPLAYS (PAGE 38)





HARDWARE

BY USING DESIGNS AND MATERIALS IN A WAY NEVER SEEN BEFORE, OUR NITE IZE HARDWARE PRODUCTS TAKE FUNCTIONAL INNOVATION TO A WHOLE NEW LEVEL.

From the simplicity of the S-Biner to the “Why didn’t I think of that?” Figure 9 Rope Tighteners, Gear Ties, and KnotBone items, our hardware products not only make your job at hand easier, but also leave you wondering how you ever lived without them. Try just one of these ingenious little devices yourself and you’ll see—you’ll be back for more!

GEAR TIE®

REUSABLE RUBBER TWIST TIE

Gear Tie Reusable Rubber Twist Ties have a tough rubber shell that provides excellent grip, a strong wire inside that holds its shape, and a range of bright colors to catch your eye!

Gear Ties are available in six sizes (3", 6", 12", 18", 24" or 32") to organize nearly anything from a small cord or cable to large sporting goods equipment.

Look for Gear Tie Technology on many additional innovative Nite Ize products. Twist it, Tie it, Reuse it—Gear Ties!

AVAILABLE COLORS



- ⊕ Use Gear Ties in the garage, on the boat, in the home, and in countless other places where things need to be secured and organized
- ⊕ Waterproof and safe for use in fresh or salt water without damage
- ⊕ UV resistant: Will not be damaged or destroyed by extended sun exposure
- ⊕ Tough rubber shell provides excellent grip
- ⊕ Use indoors and outdoors in any weather
- ⊕ Strong wire inside holds its shape, and won't scratch or mark



GT3-4PK-16



AVAILABLE SIZES



S-BINER® STEEL

DOUBLE GATED CARABINER

Made of high quality, weather-resistant stainless steel, this ultra-handly accessory with its dual spring gates will hold, secure, and connect everything from house keys and cell phones to technical camping gear. We know that one size doesn't fit all, so we've designed six different sizes so you can choose the right size for the task at hand.

AVAILABLE COLORS 

- ⊕ Individually weight rated
- ⊕ Available in Stainless, Black or Spectrum Finishes
- ⊕ Available in 6 sizes



SB2-03-01



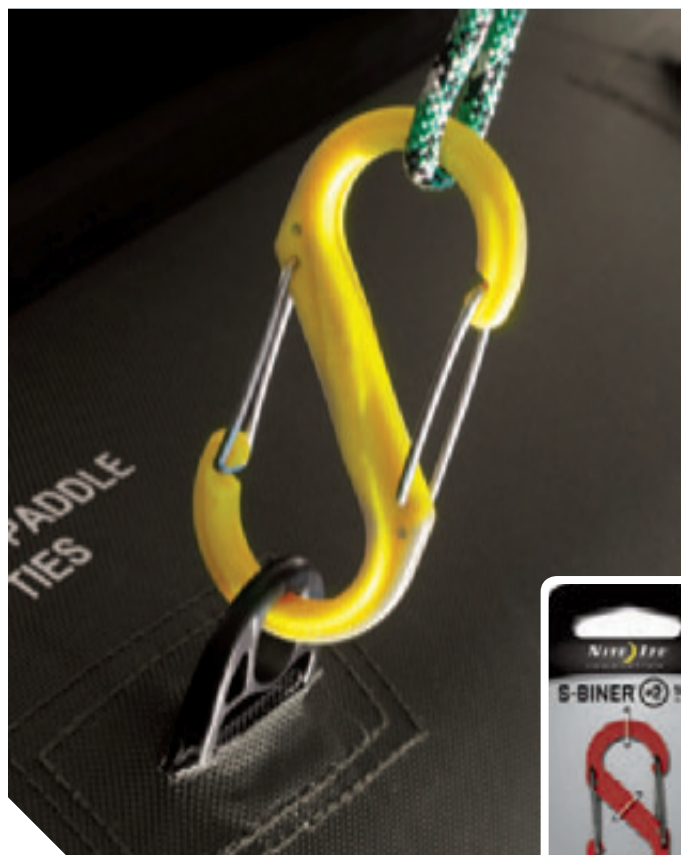
S-BINER® PLASTIC

DOUBLE GATED CARABINER

The S-Biner Plastic is durable, lightweight and available in an array of bright colors. Ultra-handly dual spring gates will hold, secure, and connect everything from house keys and cell phone holsters to technical camping gear. Attach valuables to the center bar for ultimate security, link gate ends to a second set of items and anchor, or connect many items together.

AVAILABLE COLORS 

- ⊕ Available in 6 sizes and a variety of colors
- ⊕ Lightweight: Molded with durable glass filled nylon



SBP2-03-10



KEYRACK™

S-BINER

The KeyRack features a high quality stainless steel carabiner clip with a secure gate closure on one end, allowing you to clip your keys to a belt loop, purse strap, zipper pull—anything with a D-ring. The other end holds six S-Biners, perfectly sized to hold 6 separate keys. It allows you to easily identify your keys, and attach and release them individually from the KeyRack.

- ⊕ **KeyRack: Packaged with 6 different colored Plastic Size #0 S-Biners for easy identification**
- ⊕ **KeyRack Steel: Packaged with 6 Size #.5 Stainless Steel S-Biners that attach and release to keep your keys securely and conveniently organized**



KRK-03-01

KEYRING™

S-BINER

Our S-Biner KeyRing features six different-colored, lightweight plastic S-Biners that attach quickly and securely to a sturdy, solid, stainless steel ring. Six plastic S-Biners are sized to hold 6 separate keys. Their vivid colors allow you to identify your keys at a glance, and they attach and release from the KeyRing with ease.

- ⊕ **Available in Black, Stainless & Spectrum Stainless Steel Rings**
- ⊕ **Packaged with 6 Plastic Size #0 S-Biners — combining the innovation and versatility of the S-Biner to provide unique functionality and access to your keys**



KRG-03-11

S-BINER® Ahhh...

DOUBLE GATED CARABINER BOTTLE OPENER

Like our classic S-Biner, both ends of the S-Biner Ahhh feature sturdy gate closures, making it a multifunctional carabiner that you can use to attach and carry keys, water bottles, and camping gear; hang lanterns and lights; or clip two items together. But, the S-Biner Ahhh allows both ends to function as bottle openers, too!

- ⊕ Available in Black and Stainless Steel
- ⊕ High quality stainless steel construction for durability and functionality
- ⊕ Store valuables on one end, clip with the other



SBD-03-11

CAMJAM™

CORD TIGHTENER

The Nite Ize CamJam is an easy, knot-free way to tighten, tension, and secure lighter loads of all kinds. Simply anchor the carabiner to any hook, D-ring, or loop, and pull the cord through the cam until you've reached the desired level of tension. Pull firmly, and the cam locks into place until you release it.

- ⊕ Two attachment methods for ultimate versatility
- ⊕ Sturdy & Durable
- ⊕ Multiple configurations available



NCJ2-03-01

FIGURE 9™ CARABINER

ROPE TIGHTENER

The Figure 9 Carabiner tightens, tensions, and secures ropes without knots. Whether tethering a canoe to your vehicle, anchoring boxes to a dolly, or bundling wood, this carabiner secures loads quickly, keeps tension where you need it, and allows for controlled release of high tension. Loop your rope through its strategically designed prongs, pull it tight, and it stays that way.

- ⊕ Three attachment methods for ultimate versatility
- ⊕ Laser engraved instructions ensure ease in operation
- ⊕ Smooth and secure stainless steel wire gate closures



C9L-03-01

KNOTBONE™

ADJUSTABLE BUNGEE

The KnotBone Bungee features secure carabiner ends and a durable, high quality cord that threads through each end to adjust precisely to the length you need. Once adjusted, secure it in place with a simple wrap-and-lock motion. No more pulling, stretching, and re-hooking to get the tension you want—job after individual job, the KnotBone Bungee stays right where you attach it, pulls securely to the exact length you need, and locks there.

- ⊕ Available in two sizes:
 Size #9: 9mm cord adjustable from 48" – 10"
 Size #5: 5mm cord adjustable from 28" – 6"



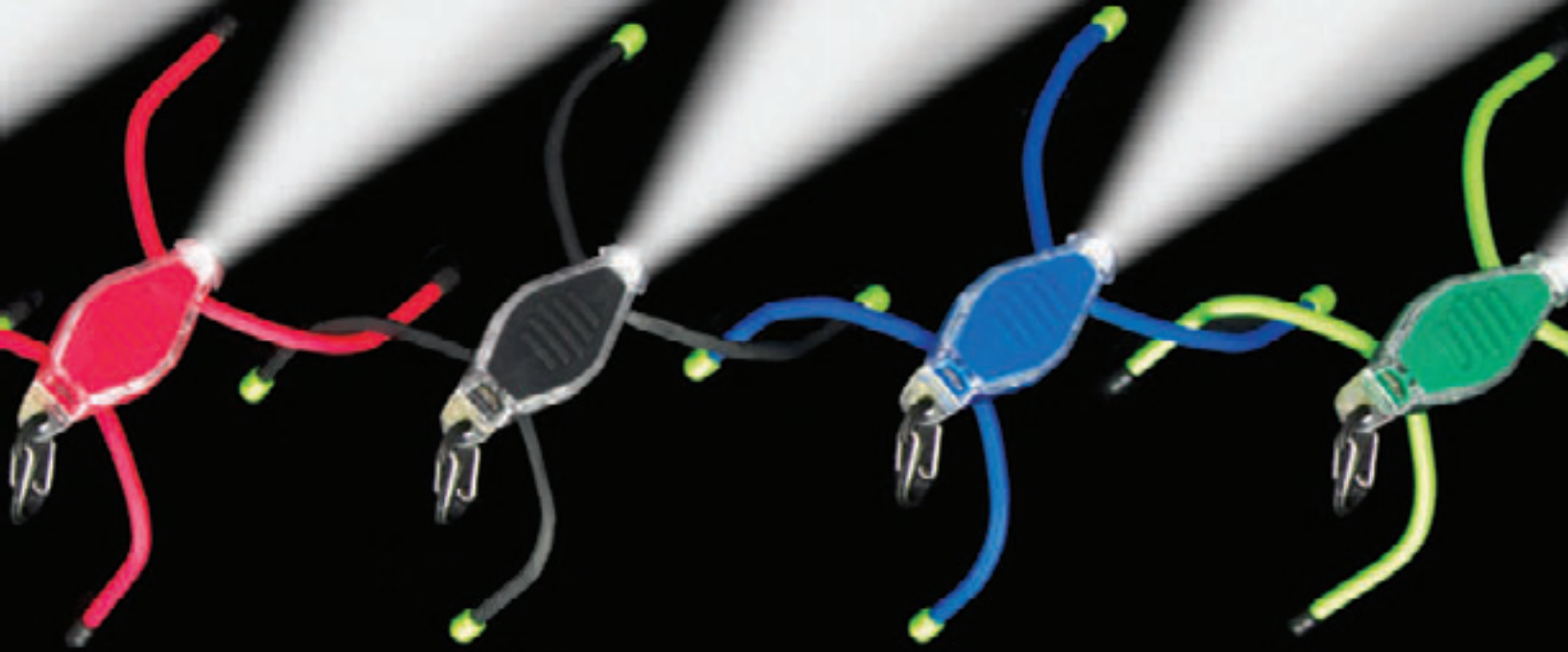
KBB5-03-01

HARDWARE
TIE DOWNS + BUNGEEES

LED

FLASHLIGHT ACCESSORIES

MOBILE ACCESSORIES



LED

OUR NITE IZE LED LINE WAS CREATED TO HELP YOU SEE & BE SEEN WHILE WORKING OR PLAYING IN ALL CONDITIONS.

Powered by ultra-bright, efficient LED illumination, these products feature replaceable batteries and are fully reusable, minimizing their environmental impact. Whether you run, bike, hike, fly, dive or sail, there's a lightweight, comfortable Nite Ize LED product to help other see you clearly, and help you see your surroundings. We also have a line of LED Toys & Games to light up the night, and an innovative line of Pet Products for fun and exercise for you and your pet.

LED MARKER BAND™

ADJUSTABLE LED SAFETY BAND

The LED Marker Band is a surprisingly thin, flexible polymer strip encased in sturdy nylon fabric, decorated with a reflective pattern for extra visibility. The fully adjustable elastic band and quick release buckle allow you to wear it snugly and comfortably around your upper arm, and the efficient LED makes you clearly visible up to a mile away. See & Be Seen with bright LED illumination.

- ⊕ **Bright Red LED for Active illumination: Glow or Flash Modes**
- ⊕ **Lightweight, flexible design**
- ⊕ **Passive high visibility reflective pattern**
- ⊕ **Easily replaceable 1 x 2032 3V lithium battery included**
- ⊕ **Battery Run Time: 100 Hours**



NABW-03

HARDWARE

LED
VISIBILITY + SAFETY

CLIP-ON MARKER™

LED SAFETY MARKER

The Nite Ize LED Clip-On Marker is a flexible polymer strip encased in lightweight, durable nylon fabric. Decorated with a reflective pattern for extra visibility, the Clip-On Marker is illuminated on both sides by an efficient LED. Lightweight, thin, and weather-resistant, its sturdy plastic S-Biner Clip can be attached to almost anything with a hook or ring—from zippers and tent lines to belt loops and bicycle seats. Bright LED illumination helps you See & Be Seen in low light conditions.

- ⊕ **Bright Red LED Illumination: Glow or Flash**
- ⊕ **Lightweight, flexible design**
- ⊕ **Passive high visibility reflective pattern**
- ⊕ **Easily replaceable 1 x 2032 3V lithium battery included**
- ⊕ **Battery Run Time: 100 Hours**



NAMW-03

FLASHLIGHT ACCESSORIES

MOBILE ACCESSORIES

SLAPLIT™

LED SLAP WRAP

The SlapLit features that same “slap it to snap it” technology with an added dimension of LED illuminating functionality. Made of durable nylon patterned with a reflective spider web design, the SlapLit is powered by a bright, easy-to-activate LED that lights up the entire wrap. Turn it on, slap it on your wrist, upper arm, or ankle and you’ve got instant nighttime visibility.

- ⊕ **Bright Red LED for Active illumination: Glow or Flash Modes**
- ⊕ **Passive High Visibility Reflective Pattern**
- ⊕ **Weather Resistant**
- ⊕ **Easily replaceable battery included: 1 x 2032 3V Lithium Battery**
- ⊕ **Battery Run Time: 100 Hours**



SLP-03-51

LED SPORT VEST™

LED SAFETY VEST

This lightweight, fashion-friendly black mesh vest is made with 3M Scotchlite™ reflective material, and features two LED illuminated flexible polymer strips. Wearing this vest when you’re heading out for a run or ride in the dark is a comfortable, effective way to ensure you’ll be highly, instantly visible to oncoming traffic.

- ⊕ **Bright Red LED illumination front & back: Glow or Flash Modes**
- ⊕ **Weather-resistant design and construction**
- ⊕ **Universal fit featuring an elastic side strap with adjustable hook & loop closure**
- ⊕ **Easily replaceable batteries included— 2 x 2032 3V Lithium Batteries**
- ⊕ **Battery Run Time: 100 Hours**



NRV2-08-10

CLIPLIT™

LED CARABINER LIGHT

The ClipLit LED is a bright, water-resistant light encased in a durable plastic housing and molded to a rugged plastic carabiner clip. Easy to activate—a quick twist turns it on and off—it's just as easy to clip onto and off of almost anything with a loop, ring or zipper.

AVAILABLE COLORS



- ⊕ Available in Red LED, White LED, and a wide range of fun and eye-catching designs
- ⊕ Secure clip: Easy to attach and remove
- ⊕ Easily replaceable 1 x CR 927 3V Lithium battery included
- ⊕ Battery Run time: 24 Hours



NCLS02-03-10SU

HARDWARE

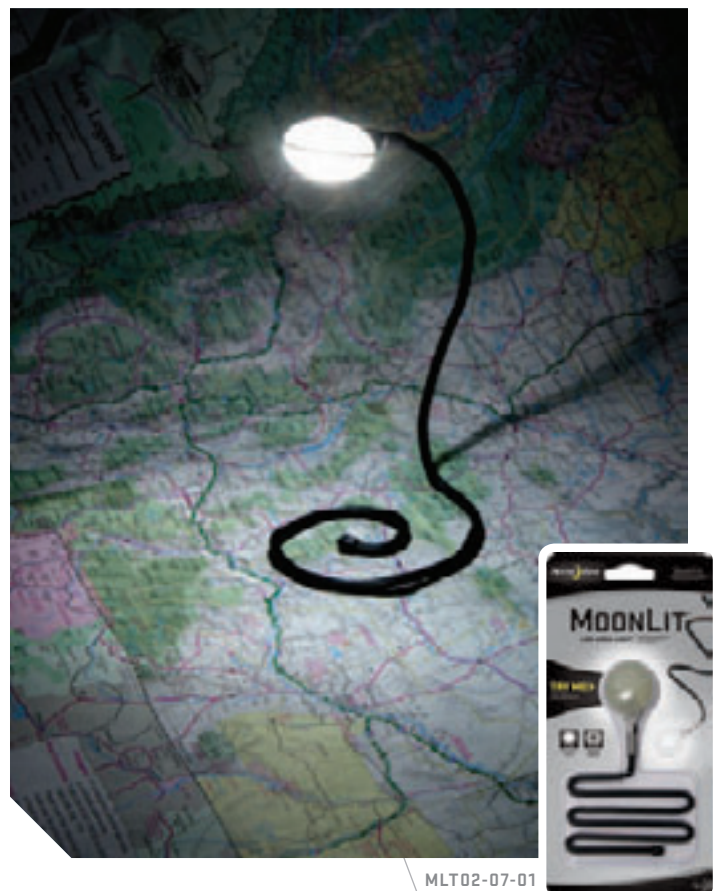
LED
VISIBILITY + SAFETY

MOONLIT™

LED AREA LIGHT

The MoonLit can be used and reused in countless configurations—it's an easy, handy way to shine ambient light from almost any angle. We've connected our famous SpotLit to a bendable, durable 18" Gear Tie Reusable Rubber Twist Tie. Bend, wrap, or twist the MoonLit around tree limbs, tent poles, bed posts, or make a loop at one end and hang it from a hook for steady ambient overhead light. Set in flash mode and wrapped around bicycle handlebars or backpack straps the MoonLit keeps you safely visible in the dark.

- ⊕ Push button switch: Flash & Glow Modes
- ⊕ Weather Resistant
- ⊕ Features Gear Tie Technology™
- ⊕ Easily replaceable batteries included: 2 x 2016 3V Lithium Batteries
- ⊕ Battery Run Time: 20 Hours Glow / 25 Hours Flash



MLT02-07-01

FLASHLIGHT ACCESSORIES

MOBILE ACCESSORIES

WRAPLIT™

LED UTILITY LIGHT

The WrapLit is two clever devices in one. We've securely attached the tough INOVA® Microlight to our durable, flexible 18" Gear Tie, creating a whole new category of versatility and usefulness. Loop to hang, twist to attach, bend to prop—even wear the Gear Tie around your neck for hands-free illumination, precisely where you need it.

- ⊕ **Four Functions: High Power, Low Power, Strobe, and Signal Mode**
- ⊕ **Features Gear Tie Technology**
- ⊕ **Weather Resistant**
- ⊕ **Easily replaceable batteries included: 2 x 2016 3V Lithium Batteries**
- ⊕ **Lumens: 6 (high mode) / Run Time: 10 Hours (high mode)**



WLT02-07-01

BRIMLIT™

LED HAT LIGHT

Flexible and lightweight, the BrimLit LED Hat Light is a convenient, hands-free light that clips easily and securely onto nearly any hat, cap, or visor brim. The BrimLit slides underneath your hat's brim and easily accommodates its shape, and a quick press of the button activates the BrimLit's four white LEDs. It's perfect for illuminating outdoor tasks around the campsite, in the garage, hunting or fishing all while keeping your hands free to work on the task at hand.

- ⊕ **Constructed of high density EVA Foam creating a flexible design shapes to fit most styles of hat brims**
- ⊕ **Two spring-tension clips automatically adjust to the brim's thickness**
- ⊕ **2 modes: High and Low**
- ⊕ **Easily replaceable batteries included: 2 x 2032 3V Lithium Batteries**
- ⊕ **Lumens: 14 (high mode) / Run Time 8 Hours (high mode)**



BMT-07-02

BUGLIT™

LED MICRO FLASHLIGHT

The BugLit is a fun and functional Micro LED Flashlight powered by the bright INOVA Microlight creating the “body” of the BugLit. The “legs” are Gear Tie Reusable Rubber Twist Ties which can be bent, wrapped, or twisted in many configurations, to sit, stand, store, or shine the flashlight anywhere you need hands free illumination.

AVAILABLE COLORS



- ⊕ Features Gear Tie Technology
- ⊕ Available with a high visibility White LED
- ⊕ Four Functions : High Power, Low Power, Strobe, and Signal Mode
- ⊕ Lumens: 6 (high mode) / Run Time: 10 Hours (high mode)
- ⊕ Available in an eye-catching range of colors
- ⊕ Battery Run Time: 20 Hours Glow / 25 Hours Flash
- ⊕ Easily replaceable batteries included: 2 x 2016 3V Lithium Batteries



BGT03W-07-1703

HARDWARE

LED
ILLUMINATION

SPOTLIT™

LED CARABINER LIGHT

The SpotLit LED Carabiner Light is the perfect mini-beacon whenever you need a little light. Set in a lightweight stainless steel carabiner, it attaches quickly and securely to key rings, jackets—just about anything with a hook or zipper.

AVAILABLE COLORS



- ⊕ Weather resistant
- ⊕ Push button switch: Glow and Flash modes
- ⊕ Available in a range of eye-catching colors
- ⊕ Easily replaceable 2 x 2016 3V lithium battery included
- ⊕ Battery Run Time: 20 Hours Glow / 25 Hours Flash



SLG12-06-02

FLASHLIGHT ACCESSORIES

MOBILE ACCESSORIES

SPOKELIT™

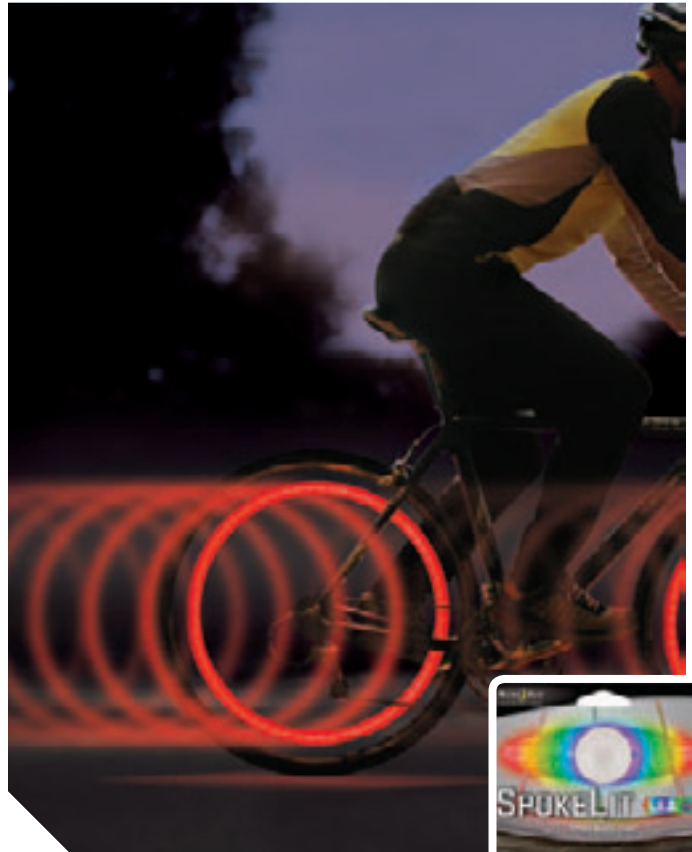
LED SPOKE LIGHT

The SpokeLit LED Spoke Wheel Light is the perfect way to increase your visibility & safety when you're riding your bike in the dark. It not only marks your bike plainly in the dark, but when you're riding at medium speed or faster, it creates the attention-getting effect of a moving circle of light.

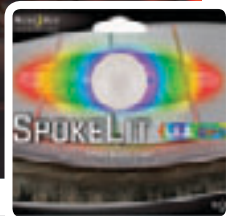
AVAILABLE LED COLORS



- ⊕ Fits most common 3 spoke cross pattern wheels
- ⊕ Attaches Easily: No tools required
- ⊕ Easily replaceable 2 x 2016 3V lithium battery included
- ⊕ Battery Run Time: 20 Hours Glow / 25 Hours Flash



SKL-03-07



SEE'EM™

LED MINI SPOKE LIGHTS

See'Em's turn bicycle wheels from "hard to spot" to "impossible to miss" while riding in the dark. Easy to attach they're backed with stainless steel clips specially designed to snap securely onto oval, round, and bladed (flat) bicycle spokes. A bright, long-lasting LED is activated by a simple twist creating an attention-getting effect of a moving circle of light.

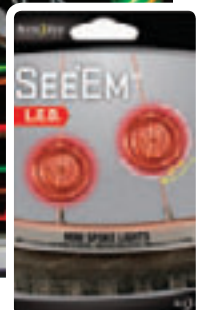
AVAILABLE LED COLORS



- ⊕ Bright LED illumination:
Available in Red, Green, and Amber LED colors
- ⊕ Fits Round, Oval or Bladed (flat) spokes
- ⊕ Each See'Em includes replaceable
1 x 927 3V lithium battery
- ⊕ Battery Run Time: 24 Hours



NSE2-03-10



BUGLIT™

LED BIKE LIGHT

The BugLit LED Bike Light puts an innovative twist on bicycle safety with its universally recognized white (for front) and red (for rear) lights, to keep your bike safely seen by other commuters when you're out riding in the dark. The BugLit is powered by the bright INOVA Microlight creating the "body" of the BugLit and the "legs" are flexible Gear Ties, which can be twisted around your bike's handlebars, basket, frame, bike rack or seat post.

AVAILABLE LED COLORS



- ⊕ **Four Functions: High Power, Low Power, Strobe and Signal Mode**
- ⊕ **Features Gear Tie Technology**
- ⊕ **No Tools Required!**
- ⊕ **Lumens: 6 (high mode) / Run Time: 10 Hours (high mode)**



BBGT10-07-1110



HARDWARE

LED
BIKE

TWISTLIT™

LED BIKE LIGHT

The TwistLit easily attaches to anything on wheels, providing LED visibility while riding in low light. Securely held in place with Gear Tie Reusable Rubber Twist Ties, the bright LED is activated with a simple push of a button--white in front illuminates your path and tells people you're heading their way, red clearly marks the rear wheel and signals your orientation to other commuters.

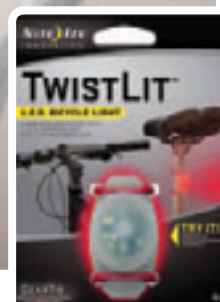
AVAILABLE LED COLORS



- ⊕ **Glow and Flash Modes**
- ⊕ **Weather resistant**
- ⊕ **Easy to attach and detach: No tools required!**
- ⊕ **Easily replaceable 2 x 2016 3V lithium battery included**
- ⊕ **Battery Run Time: 20 Hours Glow / 25 Hours Flash**



TLT-03-10



FLASHLIGHT ACCESSORIES

MOBILE ACCESSORIES

NITEDAWG COLLAR™

LED DOG COLLAR

The NiteDawg LED Light-Up Dog Collar is made of high quality nylon, and features a flexible, light-transmitting polymer core that shines a bright red LED to keep your dog safe and visible during late night or early morning outings.

AVAILABLE NYLON COLORS 

- ⊕ **Bright Red LED with 360 degree visibility**
- ⊕ **Glow and Flash Modes**
- ⊕ **Reflective stripe adds passive visibility**
- ⊕ **Easily replaceable battery included:
1 x 2032 3V Lithium battery**
- ⊕ **Battery Run Time: Glow mode:
75 hours / Flash mode: 100 hours**



NND-03-10M

COLLAR COVER™

LED COLLAR COVER

The NiteDawg LED collar cover is a durable, low-profile, flexible LED illuminated strip that fits comfortably over almost any collar to provide safety and visibility for your dog. Its bright, light-transmitting polymer core is illuminated by a super efficient red LED bulb with two mode settings—flash and steady glow. Passively reflective print provides extra visibility.

AVAILABLE LED COLORS 

- ⊕ **Attaches to any 1" collar or harness**
- ⊕ **Easily replaceable battery included:
1 x 2032 3V Lithium battery**
- ⊕ **Battery Run Time: Glow Mode: 75
hours / Flash Mode: 100 Hours**



NDCC-03-12

FLASHFLIGHT DOG DISCUIT™

LED LIGHT-UP FLYING DISC

The Flashflight LED Dog Discuit is a soft-touch plastic flying disc made specifically for nighttime play with your disc-loving dog. It's illuminated by a super-efficient, long-lasting LED, so it glows brightly in the dark. The Dog Discuit is not only super fun, it's mouth friendly, bite durable, and has a canine-resistant battery cover.

AVAILABLE LED COLORS 

- ⊕ Push-button on/off switch
- ⊕ Safe, dog-friendly design
- ⊕ Weather resistant: Floats!
- ⊕ Easily replaceable 2 x 2016 3V lithium batteries included
- ⊕ Available in Red and Green LED color options



FFDD-08-07

SPOTLIT™

LED COLLAR LIGHT

The SpotLit LED Collar Light features a durable stainless steel carabiner clip that easily clips on to the D-ring of any dog collar. The battery-powered LED emits a bright ambient glow, perfect for those pre-dawn or after dark outings with your pet. Choose from two modes that are simple to activate—press once for a steady glow, twice for continuous flash—and you not only help keep your pet safe, you'll also be able to identify him clearly from a distance.

AVAILABLE LED COLORS 

- ⊕ Glow & Flash Modes
- ⊕ Weather Resistant
- ⊕ Easily replaceable batteries included:
2 x 2016 3V Lithium batteries
- ⊕ Battery Run Time: 20 Hours Glow / 25 Hours Flash



NSL-03-10

METEORLIGHT K9™

LED PET BALL

The tennis ball sized Meteorlight K-9 LED Ball is the perfect exercise toy for you and your dog after the sun goes down. Simply push the button to activate the bright LED and let the fun begin!

AVAILABLE LED COLORS



- ⊕ **Bright, durable and water resistant: Floats!**
- ⊕ **Turn on and off by pressing and holding switch: Will not turn off when bounced**
- ⊕ **Easily replaceable 2 x 2016 3V lithium battery included**



MTLP-08-07

PETLIT™

LED COLLAR LIGHT

The PetLit LED Collar Light is a unique battery-powered LED that you can clip securely to your pet's collar, keeping him or her stylish and visible at all hours of the day and night. Made of durable plastic with playful patterns, the bright white LED light is easy to activate with a simple twist. It's a fun, yet reliable way to keep your furry friend safe and visible.

- ⊕ **Bright White LED for Visibility**
- ⊕ **Three fun design options: Green Paw, Clear Jewel and Pink Jewel**
- ⊕ **Weather resistant**
- ⊕ **Easily replaceable battery included: 1 x 927 3V Lithium battery**
- ⊕ **Battery Run Time: 24 Hours**



PCL02-03-17PA

FLASHFLIGHT™

LED LIGHT-UP FLYING DISC

The Flashflight LED Light-Up Flying Disc is made of lightweight, durable materials, with true balance and long, straight flight. It weighs in at 185 grams and looks, feels, and flies like the highest quality non-illuminated discs. With a simple press of a button, powerful LED lights up a patented fiber-optic array that extends to its rim, so the entire disc is illuminated from every angle providing endless hours of nighttime flying disc fun!

AVAILABLE LED COLORS 

- ⊕ **Push-button on/off switch**
- ⊕ **Weather Resistant**
- ⊕ **Water resistant: Floats!**
- ⊕ **Easily replaceable batteries included:
2 x 2016 3V Lithium batteries**



FFD-08-07

HARDWARE

LED
TOYS + GAMES

HOLE-IN-ONE™

DISC GOLF DISC LED LIGHT

With a simple hole punch (included in every package) any golf disc can be instantly retrofitted with the Flashflight Hole-In-One, an LED module that emits bright light with a quick press of the button. This ingenious little device makes it easy—and a lot more fun—to keep the game going from dusk to dawn.

- ⊕ **Easily retrofits any disc golf disc**
- ⊕ **10g: lightweight, will not alter flight characteristics**
- ⊕ **Bright white LED Illumination**
- ⊕ **Easily replaceable batteries included:
2 x 2016 3V Lithium Batteries**
- ⊕ **Battery Run Time: 20 Hours Glow / 25 Hours Flash**



HIO-07-02

FLASHLIGHT ACCESSORIES

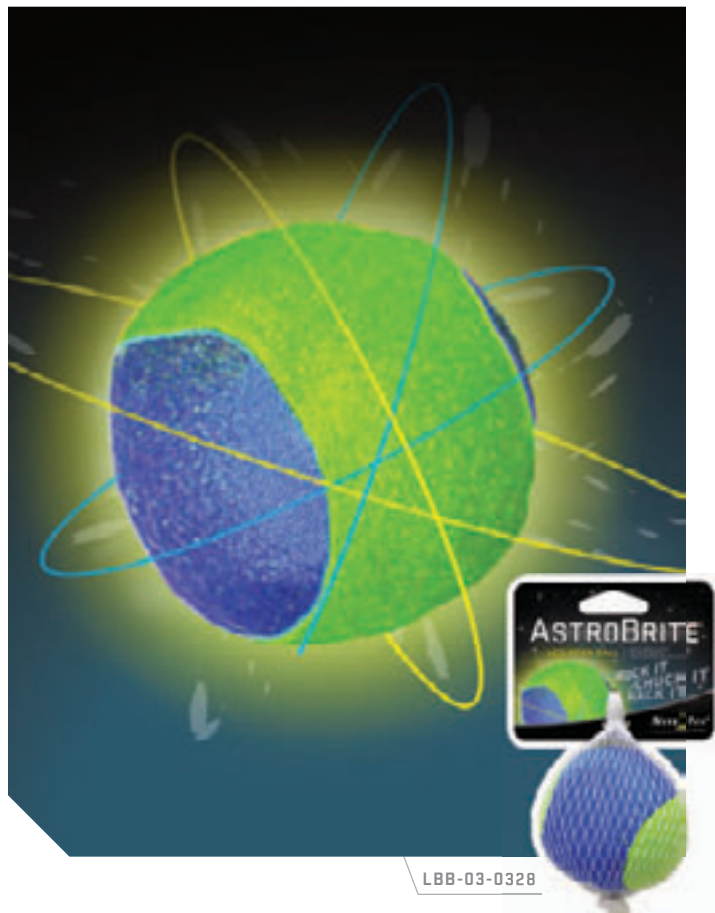
MOBILE ACCESSORIES

ASTROBRITE™

LED BEAN BALL

The AstroBrite LED Bean Ball gives a simple daytime game of catch or bean bag toss a whole new dimension in the dark. Made of soft, durable lycra knit material, this 3" diameter LED illuminated bean ball is filled with plastic beads that help transmit the light and provide just the right amount of flex and give for hours of nighttime fun.

- ⊕ **Soft, durable lycra knit material**
- ⊕ **Bright Green LED**
- ⊕ **Push button switch for easy on/off**
- ⊕ **Easily replaceable batteries included**
- ⊕ **Easily replaceable batteries included:
2 x 2016 3V Lithium Batteries**
- ⊕ **Battery Run Time: 20 Hours Glow / 25 Hours Flash**



LBB-03-0328

METEORLIGHT™

LED BALL

The Meteorlight LED Ball is the perfect toy for nighttime games. Just push the button to activate its long-life LED, and let the after-sundown fun begin! With its bright, steady glow, the Meteorlight is excellent for throwing, catching, rolling, bouncing, juggling—or any combination of all of the above—in the dark.

AVAILABLE LED COLORS 

- ⊕ **Turn on and off by pressing and holding switch:
Will not turn off when bounced**
- ⊕ **Bright, Durable and water resistant: Floats!**
- ⊕ **Easily replaceable 2 x 2016 3V
lithium battery included**



MTL-08-07



SEE'EMS™ LED MINI SPOKE LIGHTS
PAGE 16



FIGURE 9™ ASSORTED HARDWARE
PAGE 09



**CONNECT CASE™:
TRANSLUCENT PURPLE**
PAGE 31



PLASTIC S-BINER™
PAGE 06



INOVA T-SERIES
PAGE 36

VISIT NITEIZE.COM
TO LEARN MORE AND TO SEE OUR ENTIRE PRODUCT LINE



FLASHLIGHT ACCESSORIES

**FOR OVER TWO DECADES,
NITE IZE HAS BEEN
DEVELOPING AND
REFINING OUR CLASSIC
FLASHLIGHT ACCESSORIES.**

From our famous Headband (our original product, and the one that started the company in 1989), to our rugged tool and flashlight holsters, to our newer LED Upgrade Bulbs, everything in this line is designed to make your flashlight more versatile, functional, and accessible. Find the one that will improve your flashlight's lifetime, functionality, and versatility.

LED UPGRADE BULB

FOR AA MINI MAGLITE®

The 1 Watt LED Upgrade Kit turns your incandescent AA Mini Maglite® into a high-powered LED flashlight with super bright flood and focused spot capability. Just replace your incandescent AA Mini Maglite® bulb with this ultra-bright, focusable, 55 Lumen LED module and you'll instantly enjoy bright and efficient LED illumination.

- ⊕ **Extends battery life over two times that of original incandescent bulb**
- ⊕ **Brightness: 55 Lumens**
- ⊕ **Battery Run Time: 15 Hours**



LRB2-07-1W

C+D CELL UPGRADE

FOR MOST C+D CELL FLASHLIGHTS

The 1 Watt LED Upgrade Kit converts most C & D (2-6 cell PR style flange) incandescent flashlights into super-bright, long lasting (50,000 hour) LED flashlights. It's as easy as replacing the bulb—and instantly, your flashlight will emit a pure white (as opposed to the incandescent dull yellow) light, in spot to flood focus.

- ⊕ **Simple to Install: As simple as replacing the original bulb**
- ⊕ **Environmentally Friendly: Minimizes battery waste and bulb replacement waste... lighting the way for our sustainable future!**
- ⊕ **Save money on replacement batteries and bulbs**



LRB-07-PR1W

HARDWARE

LED

FLASHLIGHT ACCESSORIES
LED UPGRADES

MOBILE ACCESSORIES

HEADBAND™

HANDS-FREE FLASHLIGHT HOLDER

The Nite Ize Headband was invented to solve an all-too-common problem: how to aim a flashlight with one hand while trying to work with the other. Our Headband provides the perfect convenient, inexpensive solution. Constructed of 1" webbing, this lightweight, adjustable headpiece fits almost any AAA, AA, or L123 flashlight, and instantly turns it into a versatile headlamp.

- ⊕ **Hook & Loop fastener for one-size-fits-all design**
- ⊕ **Inner loop for smaller diameter flashlights, outer loop for larger diameter flashlights**



NPO-03-01

LITE HOLSTER STRETCH™

UNIVERSAL FLASHLIGHT HOLSTER

With its sturdy construction, molded foam insulation, and high-quality elastic side panels, our Lite Holster Stretch keeps flashlights of nearly every size safe at your side. The Lite Holster Stretch will easily fit a AA mini flashlight, but the panels also expand to provide a secure fit for larger flashlights up to and included D-cell models. Because its clip rotates 360 degrees and locks in eight different positions, it doubles as a useful hands-free device.

- ⊕ **Rugged Holster for AAA, AA, L123, C & D cell flashlights: Fits from 5/8" to 1-1/2" diameter barrels**
- ⊕ **Durable clip rotates 360 degrees and locks in eight different positions**



LHS-03

TOOL HOLSTER STRETCH™

UTILITY HOLSTER

The Lite Holster Stretch is made of Ballistic nylon and molded EVA foam, and features elastic side panels that expand to fit thin to thick multi-tools or pocket knives. Its super-strong flex clip attaches to belts, waistbands and straps and rotates a full 360 degrees and locks in eight different positions.

- ⊕ Super Strong flex clip rotates 360 degrees and locks in 8 positions
- ⊕ Universally sized rugged holster for virtually any size multi-tool or pocket knife
- ⊕ Secure snap lid closure
- ⊕ Features back accessory pocket that will fit smaller bits and accessories



POCK-ITS PLUS™

UTILITY HOLSTER

The Pock-Its Plus Utility Holster keeps your mobile phone, mini flashlight, large multi-tools, and a wide variety of other items conveniently all in one well-designed, easy-to-carry holster.

- ⊕ Super Strong flex clip rotates 360 degrees and locks in 8 positions
- ⊕ Two internal pockets accommodate most sizes of mini flashlights and large multi-tools
- ⊕ Front body pocket expands to fit a wide variety of mobile devices such as mobile phone, GPS, two-way radio, mp3 player and more!
- ⊕ Cargo pocket on back provides additional storage and access to other accessories



CLIP Pock-Its XL™

UTILITY HOLSTER

Made of durable, weather-resistant materials and backed with a strong, secure clip, our Clip Pock-Its XL Utility Holster features 2 front pockets that fit full size flashlights and multi-tools of almost every make, as well as multiple interior pockets for pens, credit cards, licenses, IDs and more.

- ⊕ **A larger version of the original Pock-Its design —it's a classic!**
- ⊕ **Strong, secure, easy to remove clip**
- ⊕ **Expandable Front Pocket for smaller items**



NPXL-03-01

MINI Pock-Its™

UTILITY HOLSTER

The Mini Pock-Its has two stacked compartments to carry mini (AA and AAA) flashlights and multi-tools of almost every brand. Its rugged, water-resistant construction and hook-and-loop closure keep the contents safe and conveniently accessible, and the clip attaches securely to waistbands or belts.

- ⊕ **Constructed of rugged, water-resistant materials**
- ⊕ **Accommodates most AA & AAA barrel-shaped mini-flashlights**
- ⊕ **Fits most brands & sizes of multi-tools**
- ⊕ **Fits waistbands and belts up to 2-1/4" wide**



PIM-03-01

LITERIDE GT™

UNIVERSAL FLASHLIGHT BICYCLE MOUNT

Simply slide your barrel-shaped hand-held flashlight into its grooved, thermoplastic rubber base, adjust the two bendable 9" Gear Ties for a secure fit, and twist their ends tightly around any bicycle handlebar and you have instant bright, directed light that not only alerts others to your presence, but also illuminates the path ahead.

- ⊕ **Universal Flashlight Mount:**
Fits most flashlights & handlebars
- ⊕ **Easy to attach and remove: No tools required**
- ⊕ **Remove and prop or hang Gear Ties for hands free lighting to assist in roadside repairs or as a signal light**
- ⊕ **Features Gear Tie Technology**



LRGT-03-09

NEED A HIGH QUALITY LED FLASHLIGHT TO USE WITH THESE INNOVATIVE AND FUNCTIONAL FLASHLIGHT ACCESSORIES?

INOVA®

VISIT NITEIZE.COM
TO LEARN MORE ABOUT INOVA® HIGH
PERFORMANCE LED FLASHLIGHTS



MOBILE ACCESSORIES

IF YOU'RE LOOKING FOR AN INNOVATIVE, HIGH QUALITY CASE, HOLSTER OR ACCESSORY TO FIT BOTH YOUR MOBILE DEVICE AND YOUR LIFESTYLE, YOU'RE IN THE RIGHT PLACE.

From the boardroom to the back forty, the job site to the fishing pier, our Nite Ize Mobile Accessories keep your valuable mobile device safe, secure, convenient and more functional. Designed with Nite Ize Innovation, our entire line of Mobile Accessories features durable construction and top quality materials. Plus, the ingenious designs will make your life a little easier, protect your valuable devices and help keep you organized in ways you never knew were possible.

CONNECT CASE™

FITS iPhone® 5 / 4S / 4

Stay Connected™. The Connect Case offers protection from every day wear and tear, and dependable shock absorption for your iPhone. An innovative one-piece flex hinge design allows for easy and secure installation and includes a removable Connect Clip for easy transition to Connect Accessories; Connect Cradle and Mobile Mount.

AVAILABLE COLORS (IPHONE 4/4S) 

AVAILABLE COLORS (IPHONE 5) 

- ⊕ High strength, shatterproof Lexan® polycarbonate case and clip construction with positive diamond grip on sides of the case
- ⊕ Innovative one piece flex-hinge case design allows for easy and secure iPhone installation
- ⊕ Includes a convenient S-Biner® carry clip, a custom sized anti-fingerprint clear screen protector, a microfiber cleaning cloth, and screen protector installation card



CNT-IP5-03TC

CONNECT CASE™ ACCESSORIES

MOBILE MOUNT + CONNECT CRADLE

The Connect Mobile Mount uses Gear Tie Technology to easily attach your Connect Case securely and conveniently to any handlebar. The Connect Mobile Mount provides safe, easy accessibility to your iPhone while on the go. The Connect Cradle allows you to secure your Connect Case to any vehicle vent, create a desk stand, or a convenient docking station on any smooth flat surface.

- ⊕ Both the Connect Mobile Mount and Connect Cradle are designed to work with the Connect Case for either iPhone® 5 or iPhone® 4S/4
- ⊕ Connect Accessories are molded of high strength Lexan® polycarbonate
- ⊕ Connect Accessories feature Gear Tie Technology for easy, secure connections without tools



CNTMM-08 + CNTCC-08

HARDWARE

LED

FLASHLIGHT ACCESSORIES

MOBILE ACCESSORIES
ACCESSORIES FOR iPhone

BIOCASE™

BIODEGRADABLE, COMPOSTABLE PHONE CASE

Made in the USA of GD P.U.R.E. Bio Resin (GDH-B1)—the world's first certified compostable elastomer—the BioCase is a uniquely sustainable solution to protect your iPhone. Soft and flexible yet surprisingly durable, the BioCase is made of organic materials, not fossil fuels creating a much lighter carbon footprint. The BioCase fits snugly around your iPhone, slides in and out of your pocket easily, and comes in a variety of solid colors and designs that reflect a wide spectrum of styles and moods.

AVAILABLE COLORS



- ⊕ **Soft comfortable material for handling and slides easily into your pocket**
- ⊕ **GD P.U.R.E Bio Resin (GDH-B1) is safe, durable, and certified to meet the toughest environmental standards. Biodegradable and compostable following the requirements of EN 13432 and ASTM D6400**
- ⊕ **Two styles available to fit either iPhone® 5 or iPhone® 4S/4**



BIO-IP5-69

ACTION ARMBAND™

ADJUSTABLE SPORT ARMBAND

Durable, flexible, and sleek, the Action Armband securely carries your mobile device while you're hiking, running, or in the gym. Just slide it into the main pocket, thread the weather-resistant microfiber strap through the lightweight metal loop, press it closed around your upper arm, and go!

- ⊕ **Clear main pocket allows for full access to your device through a flexible TPU material**
- ⊕ **Two Sizes to fits iPhone® 4S/4 or 5, iPod Touch® 4th or 5th Gen, and a wide variety of other smart phones**
- ⊕ **Comes with an S-Biner Key Clip to easily secure a key for convenient access**
- ⊕ **Includes Curvyman Cord Supervisor: Organizes, shortens, and stores your cord tangle free**



NIPB2-01-R8

CLIP CASE CARGO™

RUGGED HOLSTER

The Clip Case Cargo safeguards your phone in rugged conditions. Made of durable ballistic material and equipped with a fully enclosed bottom, it absorbs shocks and shields your items from the elements. With a patented flex clip that attaches securely over to your belt, the Clip Case Cargo fully rotates for access at any angle, and even locks in eight different positions.

- ⊕ **Strong flex-clip design rotates 360 degrees and locks in 8 positions for ultimate comfort and versatility**
- ⊕ **Universally sized; several sizes available that are designed to fit nearly any phone or device on the market, with or without a form fit case**
- ⊕ **Two pockets on the case—one inside and one in the back—hold identification, cash and credit cards**



CCCW-03-01

CLIP CASE SIDEWAYS™

RUGGED HOLSTER

Made of durable ballistic material to protect from impacts, and accented with weather-resistant, rugged hypalon material, this holster is designed to keep your phone safe and at-hand on your belt, in a fixed horizontal position. Your phone will stay secure with a durable hook and loop closure, and an interior pocket provides a handy place to store ID, credit cards, or cash.

- ⊕ **Rugged flex clip ensures confident attachment to waistbands, belts, or straps up to 2-3/16"**
- ⊕ **Internal pocket holds credit cards, ID, currency and more for convenient access**
- ⊕ **Two universal sizes: Designed to fit nearly all mobile phone shapes and styles on the market—with or without form fit cases**



CCSL-03-01

HARDSHELL HOLSTER™

RUGGED CASE

This rugged case keeps your smartphone both accessible at your side and protected from the elements. Constructed of high density EVA foam and ballistic nylon, with elastic panels on each side to fit a variety of medium sized smartphones, with or without a protective case.

- ⊕ Rugged fixed position clip attaches securely to your waistband or belt
- ⊕ Hook and loop lid closure secures contents
- ⊕ Internal pocket holds credit cards, ID, currency and more for convenient access
- ⊕ Unique expandable design accommodates a variety of medium size smartphones



HSH-03-01

BACKBONE™

RUGGED CASE

We took the hazards of rough weather and rigorous activity into consideration when we designed the Backbone Case. Made of durable ballistic nylon, its zippers are weather-resistant, the case itself is fully enclosed, and we've added an interior molded-foam "backbone" to protect your cargo from drops and impact.

- ⊕ Strong flex-clip design rotates 360 degrees and locks in 8 positions for ultimate comfort and versatility
- ⊕ Features an interior pocket to hold cash, credit cards, ID, or small accessories
- ⊕ Two sizes designed to fit a variety of phones and mobile devices



NBB-PKG-10BLK

CURVYMAN™

CORD SUPERVISOR

Made of durable, lightweight plastic, Curvyman's unique physique was made for keeping unruly ear buds and headsets in order. Pop one end of your cord through a hole at his base, wrap it up around his middle, clip the other end through the second slit at his top, and your cord stays tangle-free and organized when not in use. Or, just wrap the slack around his middle and keep your cord close-fitting and tidy while you're running, working, traveling, or otherwise on the go.

AVAILABLE COLORS



- ⊕ Keep your cords convenient and tangle-free
- ⊕ Comes with a size #0 plastic S-Biner attachment so you can clip him anywhere



CVM-03-01

GEAR TIE®

REUSABLE RUBBER TWIST TIE

There are so many ways our Gear Tie® Reusable Rubber Twist Ties are useful! With a bendable wire interior and colorful, durable, soft rubber exterior, the Gear Tie is the perfect all around organizer to keep computer cords, power cords and ear buds bundled, untangled and organized for your next use. Next time your cords are driving you crazy, reach for a Gear Tie.

AVAILABLE COLORS



- ⊕ Great way to keep your headset or power cords tangle-free
- ⊕ Available in a wide range of sizes and colors
- ⊕ Tough rubber shell provides excellent grip
- ⊕ Won't scratch or mark
- ⊕ Strong wire inside holds it shape, and can be used and reused countless times



GT3-4PK-16

INOVA® FLASHLIGHTS

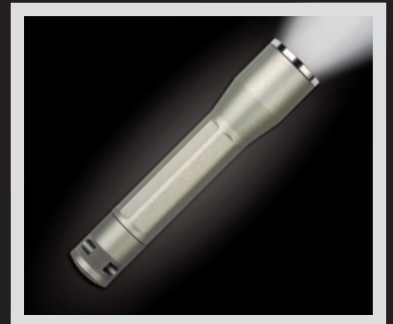
INOVA® High Performance LED Flashlights are products based on advanced engineering solutions and boundary pushing design.

Our products offer category leading, cutting-edge design and functionality. Wherever reliability, performance and innovative design are appreciated —backyard to backwoods—you will find INOVA® handheld lighting.

FOR MORE INFORMATION ABOUT INOVA FLASHLIGHTS PLEASE VISIT NITEIZE.COM



MICROLIGHT SERIES



X-SERIES



T-SERIES



24-7



INKA™ PENS

“Small and ingenious, this pen belongs in the same class as our greatest icons of strength in compact packages; the Porsche 911, the Swiss Army Knife, Sugar Ray Leonard.”
 – *Pen World Magazine*

The Inka Pen is engineered to write in all conditions —underwater, at any altitude, in temperature extremes and at any angle. It’s innovative & patented, multi-function design allows you to use it as a quick-use pen or a full-size fine writing instrument, and the stainless steel split ring allows you to attach it securely wherever you need it.

FOR MORE INFORMATION ABOUT INKA PENS
 PLEASE VISIT NITEIZE.COM



- ⊕ Available in Stainless Steel. Gift Box packaging and Pressurized Refill Ink Cartridges are also available
- ⊕ Ink Color: Blue
- ⊕ Temp Range: -30 degrees to 300 degrees;
 Angle of Operation: 0 degrees to 360 degrees;
 weather conditions: ANY
- ⊕ Materials: Hardened 304 stainless steel with centerless ground finish, precision cast high-strength carbon fiber body, low temperature Viton o-ring seals



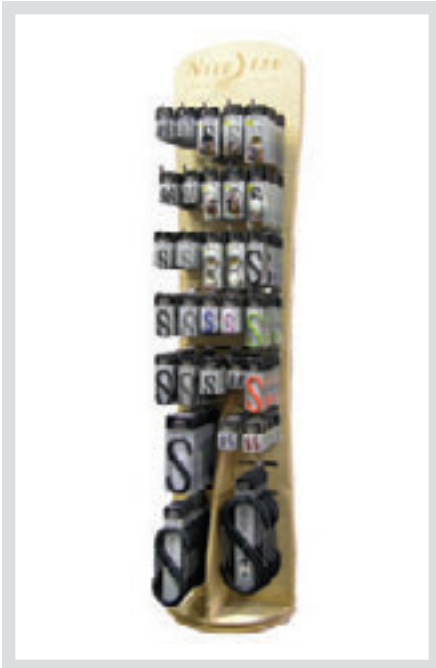
MERCHANDISING DISPLAYS

ARE YOU LOOKING FOR WAYS TO MAXIMIZE YOUR MERCHANDISING SPACE?

Nite Ize offers a wide variety of display options that have been specifically designed to present our accessories and maximize sales in your store. From a simple clip strip display for your checkout aisle, to a full color floor display, we have a display option that will work in your existing space, make an eye-catching presentation and help drive sales in your store locations.

MERCHANDISING DISPLAY STYLES

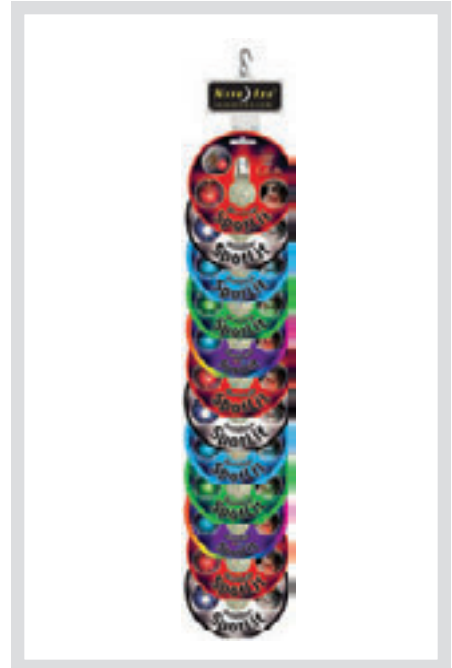
Nite Ize features a variety of different display styles. We've included a few examples below, but please feel free to visit our website, or speak to your Nite Ize salesperson to see our full display assortment.



**PERMANENT ROTATING
DISPLAYS**



GRAVITY BINS



CLIP STRIP DISPLAYS



FLOOR DISPLAYS



SIDE KICK DISPLAYS



**ROTATING COUNTER-TOP
DISPLAYS**



5660 CENTRAL AVENUE, BOULDER, CO 80301 USA
PHONE: 303-449-2576 • FAX: 303-449-2013 • TOLL FREE: 1-800-678-6483

NITEIZE.COM