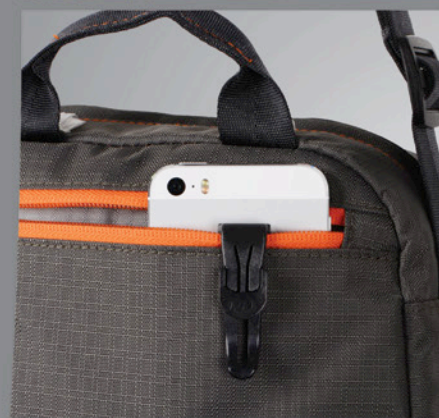


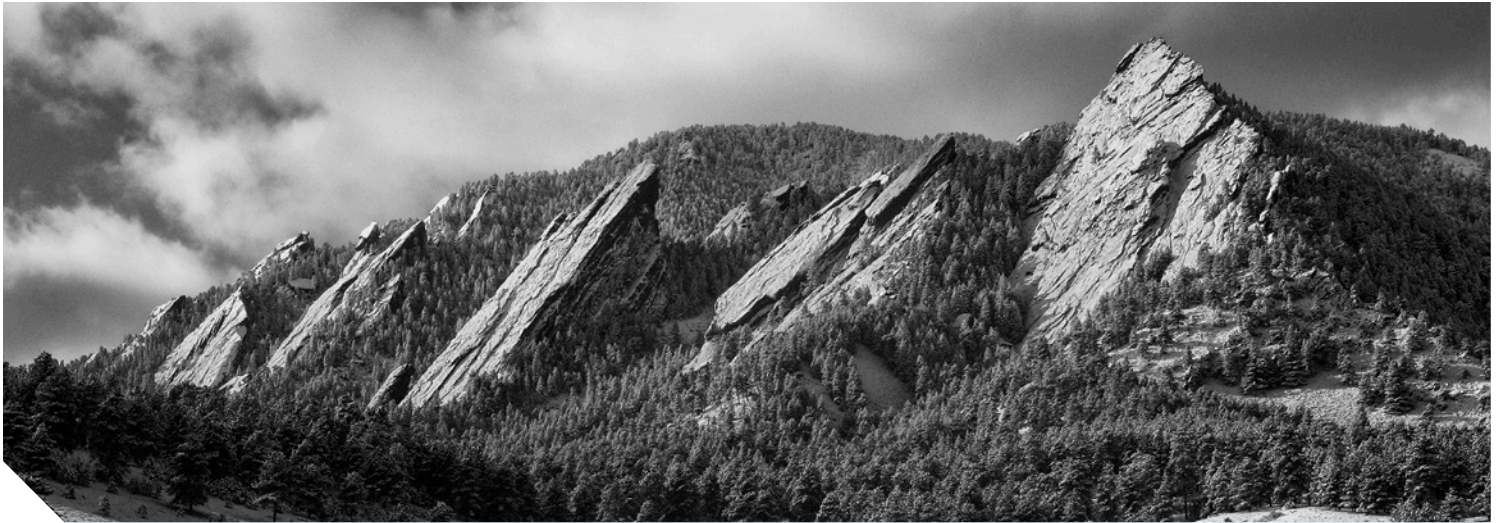
NITE IZE®

INNOVATION

2014 MOBILE PRODUCTS

25 YEARS OF
INNOVATION





LOCATED IN BOULDER, COLORADO, USA



OUR HISTORY

CEO and Founder Rick Case started Nite Ize as an undergraduate at the University of Colorado in 1989. "I was on a fishing trip using the brand new mini flashlight my family gave me as a gift. I was fishing at night with it, holding it in my mouth. Sure enough, I opened my mouth, and the flashlight fell out. I was staring down into the water, watching my still lit flashlight on the bottom when an idea hit me. That idea became the first product I ever made, the Headband Mini Flashlight Holder."

WHAT WE DO

The mission of Nite Ize is to create innovative, solution-based products with quality, performance, and value at the core. We strive to exceed our customers' expectations in every way possible while conducting business with integrity, honesty, and respect for our team members, customers and partners.

WHERE WE ARE GOING

Innovation inspired the idea that has become Nite Ize, and will continue to drive our evolution into the future.

As we grow, our vision is to build the Nite Ize brand to be recognized for imaginative products that make our customers' lives easier, safer, and more fun.

Our success should always be measured by the ongoing enthusiasm for Nite Ize products, our customers' satisfaction, the development of our team and a minimal environmental impact.

WHO WE ARE

Nite Ize is built on the dedication and enthusiasm of our staff. We are ordinary people working together to achieve extraordinary results.

These core values define our interaction with one another and our customers:

- ⊕ **Persistence**
- ⊕ **Ownership**
- ⊕ **Integrity**
- ⊕ **Problem Solving**

STEELIE® CAR MOUNT KIT



STCK-11-RB

The Steelie Car Mount Kit utilizes two specially engineered components; the Steelie Magnetic Phone Socket and Steelie Dash Ball to provide secure-yet-versatile phone docking exactly where you need it.

The two components attach magnetically to create a versatile viewing platform that easily attaches to nearly any vehicle dashboard with a smooth glide and the ability to easily rotate for an endless number of viewing angles.

- ⊕ **The Steelie Magnetic Phone Socket and Dash Ball are backed with 3M® VHB® foam adhesive tape for secure attachment**
- ⊕ **The Steelie Magnetic Phone Socket uses a powerful neodymium magnet**
- ⊕ **Each Steelie Car Mount Kit includes: one Steelie Magnetic Phone Socket, one Steelie Dash Ball, an alcohol prep pad, 3M® primer and installation instructions**

STEELIE® PEDESTAL KIT



STTK-11-RB

The Steelie Pedestal Kit creates a functional pedestal for your tablet or other mobile device.

Simply place the Steelie Tabletop Stand on any smooth, flat surface—attach your tablet, fitted with the Steelie Magnetic Tablet Socket, and let the magnetic attraction do the rest. You can tilt the screen to any angle and rotate it from landscape to portrait orientation for optimum viewing. When you're ready to move on, just detach the tablet from the stand with a simple tug.

- ⊕ **The Steelie Magnetic Tablet Socket uses a powerful neodymium magnet and is backed with 3M® VHB® foam adhesive tape for secure attachment**
- ⊕ **Each kit includes: one Steelie Magnetic Tablet Socket, one Steelie Tabletop Stand, an alcohol prep pad and installation instructions**

STEELIE® HOBKNOB KIT



STHB-M1-RB

The Steelie HobKnob Kit is a fun, innovative way to create both a handle and mini stand for your tablet, e-reader, or other device.

Simply peel and attach the socket to the center of the back of your tablet or its rigid case. The HobKnob's machined aluminum post and grippy rubber ball fits securely around the Steelie Magnetic Tablet Socket, attaches to it magnetically, and makes a perfect handle or stand.

- ⊕ **The Steelie Magnetic Tablet Socket will attach to metal surfaces—refrigerator doors, steel shelving, stove hoods, filing cabinets, lockers and toolboxes**
- ⊕ **The Magnetic Tablet Socket uses a powerful neodymium magnet and is backed with 3M® VHB® foam adhesive tape for secure attachment**
- ⊕ **Each kit includes: one Steelie HobKnob Handle, one Steelie Magnetic Tablet Socket, an alcohol prep pad and installation instructions**

STEELIE® COMPONENT AND REPLACEMENT KITS

THE STEELIE CAR MOUNT KIT, PEDESTAL KIT AND HOBKNOB KIT WILL CHANGE THE WAY YOU USE YOUR MOBILE DEVICES IN YOUR VEHICLE, HOME AND OFFICE. MAKE SURE THAT YOUR STEELIE IS EVERYWHERE YOU NEED IT TO BE WITH STEELIE COMPONENT AND REPLACEMENT KITS.



STSM-11-R7

MAGNETIC PHONE SOCKET

Perfect for families that have multiple mobile phones or devices, but who share a vehicle or workspace. Each location can have its very own Steelie Magnetic Phone Socket to easily attach to either the Steelie Car Mount or the Steelie Pedestal Kit. You can also take advantage of the strong magnet to secure to any metal surface.

KIT CONTAINS:

- ⊕ 1 Magnetic Phone Socket
- ⊕ 1 cleaning pad



STLM-11-R7

MAGNETIC TABLET SOCKET

A great addition for households or workplaces with multiple devices. Securely attach the Steelie Magnetic Tablet Socket to any device for instant attachment to any Steelie Tabletop Stand, HobKnob Kit or metal surface.

KIT CONTAINS:

- ⊕ 1 Magnetic Tablet Socket
- ⊕ 1 cleaning pad



STDM-11-R7

DASH BALL

Multiple vehicles? Don't forget to purchase an extra Steelie Dash Ball so you can have the incredible functionality of the Steelie Car Mount Kit in every vehicle, boat, or plane you own. Compatible with both Steelie Magnetic sockets.

KIT CONTAINS:

- ⊕ 1 Dash Ball
- ⊕ 1 cleaning pad
- ⊕ 1 primer pen



STPCR-11-R7

CAR MOUNT ADHESIVE REPLACEMENT KIT

No need to worry about buying a whole new Steelie Car Mount Kit every time you replace your smartphone or vehicle. Purchase a replacement adhesive kit and you can easily move your Steelie Magnetic Phone Socket and Dash Ball to a new device or location.

KIT CONTAINS:

- ⊕ 2 x large 3M® VHB™ adhesive pads for Dash Ball
- ⊕ 2 x small 3M® VHB™ adhesive pads for Magnetic Phone Socket
- ⊕ 1 primer pen
- ⊕ 2 cleaning pads



STRK-11-R7

TABLET ADHESIVE REPLACEMENT KIT

New device? No need to purchase a new Steelie Pedestal or HobKnob Kit. Simply remove the existing adhesive, replace it with a brand new one, and you are ready to go.

KIT CONTAINS:

- ⊕ 2 x 3M® VHB™ adhesive pads
- ⊕ 2 cleaning pads

HANDLEBAND™

UNIVERSAL SMARTPHONE BAR MOUNT



HDB-01-R3

The HandleBand Universal Smartphone Bar Mount allows you to securely attach most mobile phones to a handlebar, with or without a case, to be easily seen and conveniently accessible to use while riding, walking, or running. Made with a lightweight expandable silicone with an aluminum base at its core, the single band securely wraps around nearly any size bar - including bicycles, motorcycles, ATVs, jogging strollers, and shopping carts.

AVAILABLE COLORS



- ⊕ **Universal design fits nearly every smartphone, with or without a case**
- ⊕ **Conveniently accessible to attach and remove smartphone without having to remove the HandleBand from the bar**
- ⊕ **Easily attaches to most common bar diameters in either horizontal or perpendicular configuration**

QUIKSTAND™

MOBILE DEVICE STAND



QSD-01-R7

The QuikStand is a portable mobile device stand designed for smartphones & tablets (up to 7") to easily view in either portrait or landscape orientation. Made with sleek brushed aluminum and sturdy polypropylene, it's about the size of a credit card and easily fits in your wallet.

To use, simply adjust the aluminum support bar to the desired position and slide your device between it and the front flap—it fits smartphones and 7" tablets with or without cases.

- ⊕ **Works with most smartphones, e-readers and small tablets, with or without a form fit case**
- ⊕ **Front flap easily adjusts to the depth of your device for secure viewing without obstructing the view of your screen**
- ⊕ **Easily adjustable support bar allows you to position your device at multiple angles for perfect viewing**

TOTAL ECLIPSE™

SELF-LOCKING DEVICE CLIP



SLC-01-R7

The lightweight, self-locking Total eCLIPse lets you securely clip your cell phone, mp3 player, or any handheld device to most fabric pockets, waistbands, woven belts and straps, without the extra weight and bulk of a holster. Made of lightweight durable plastic, our Total eCLIPse is a self-locking, spring-loaded clip that comes backed with a thin strip of 3M®'s patented VHB™ adhesive. Affix it to the back of your cell phone, mp3 player, or almost any lightweight item with a smooth flat hard back, and your device becomes instantly "clippable." Your device will stay safely and securely in place until you release it with a simple press of its lever.

- ⊕ **Auto-locks onto soft fabrics up to 1/8" thick**
- ⊕ **Fits most mobile devices such as mobile phones, MP3 players, digital cameras, but can be affixed to any hard-shell case or accessory you can think of and want to keep handy**
- ⊕ **3M® VHB™ adhesive is incredibly durable so you can have 100% confidence that the clip will stay firmly in place**

SCREENSKATE™

MICROFIBER CLEANING CLOTH



SSK-31-R7



Our soft, sturdy microfiber ScreenSkate snaps into an easy-to-grip stingray shape, allowing you to glide it across the screen of your cell phone, notebook, or computer in one easy, continuous motion. It folds to provide comfortable grip so you can glide flat on the screen and provide even pressure when you clean, and its square shape means it gets into the corners easily. Attached to a durable Size #0 plastic S-Biner®, you can clip the ScreenSkate to a key chain or computer bag zipper pull and keep it handy throughout your day. Plus, it's the size of a credit card so it easily flattens to fit in your wallet for convenient storage and easy access anywhere you go.

AVAILABLE COLORS



- ⊕ Microfiber cleaning surface
- ⊕ Foldable & storable
- ⊕ Hand washable
- ⊕ S-Biner clips for easy access

inka® mobile™

PEN + TOUCHSCREEN STYLUS



IMP-M2-R7



The Inka Mobile is made of durable nylon and carbon fiber that's tough, lightweight, and corrosion-resistant. One end of the Inka Mobile features a carabiner clip that securely anchors to a key ring, zipper pull, or nearly any loop or D-ring, so you can always know where the pen is when you need it.

Release the pen from the clip with a couple of quick twists—its fully replaceable pressurized cartridge contains waterproof ink that writes smoothly and consistently in extreme temperatures, upside-down, at any altitude—even underwater. And to add to its versatility, the cap at the opposite end of the Inka Mobile opens to reveal an easily accessible touch-screen stylus—perfect for everything from quick notes to business presentations.

AVAILABLE COLORS



- ⊕ Available in 3 eye-catching translucent colors to help identify the pen side and the stylus side at a quick glance
- ⊕ Features a replaceable pressurized blue ink cartridge that gives the Inka Mobile its amazing ability to write in extreme conditions

ACTION ARMBAND™

ADJUSTABLE SPORT ARMBAND



NIPB2-01-R8



Durable, flexible, and sleek, the Action Armband securely carries your mobile device while you're hiking, running, or in the gym. Just slide it into the main pocket, thread the weather-resistant microfiber strap through the lightweight metal loop, press it closed around your upper arm, and go!

- ⊕ Clear main pocket allows for full access to your device through a flexible TPU material
- ⊕ Two sizes to fit iPhone® 4S/4 or 5S/5, iPod Touch® 4th or 5th Gen, and a wide variety of other smartphones
- ⊕ Comes with an S-Biner Key Clip to easily secure a key for convenient access
- ⊕ Includes Curvyman Cord Supervisor: Organizes, shortens, and stores your cord tangle free
- ⊕ Secure rear pocket for cards and cash

GEAR TIE®

CLIPPABLE TWIST TIE



The Gear Tie Mountable - Clippable Twist Tie is a colorful, compact way to add Gear Tie functionality to everyday zippers, loops and rings. With a sturdy plastic Size #0 plastic S-Biner on one end and a tough, flexible 3" Gear Tie on the other, you can attach the Clippable Twist Tie to a zipper pull and use the bright Gear Tie to more easily grip and zip jackets, luggage, backpacks and bags. Or, bend the Gear Tie end into a knot and attach ski passes, keys, luggage tags, or other small items you want literally kept at your fingertips. The Clippable Twist Tie can also be attached to key rings or belt loops to easily wrap small personal items, like earbuds, to keep them handy.

AVAILABLE COLORS



- + Keeper / zipper pull
- + S-Biner clips for easy access
- + Strong wire inside holds its shape
- + Twist it, tie it, reuse it – Gear Ties!

GEAR TIE®

REUSABLE RUBBER TWIST TIE



There are so many ways our Gear Tie Reusable Rubber Twist Ties are useful! With a bendable wire interior and colorful, durable, soft rubber exterior, the Gear Tie is the perfect all around organizer to keep computer cords, power cords and ear buds bundled, untangled and organized for your next use. Next time your cords are driving you crazy, reach for a Gear Tie.

AVAILABLE COLORS



- + Great way to keep your headset or power cords tangle-free
- + Available in a wide range of sizes and colors
- + Tough rubber shell provides excellent grip
- + Won't scratch or mark
- + Strong wire inside holds its shape, and can be used and reused countless times

GEAR TIE® MOUNTABLE

CORD ORGANIZER



The Gear Tie Mountable Cord Organizer, backed with 3M® Acrylic Plus Tape™, can be mounted to the undersides of shelves, desks or counters. Once the Gear Tie Cord Organizer is in place, wrap its flexible, reusable Gear Tie around cords to gather and bind them neatly, making them less visible and more accessible.

AVAILABLE COLORS



- + Tough rubber shell provides excellent grip—stick anywhere
- + Can be removed without damage
- + Strong wire inside holds its shape
- + Twist it, tie it, reuse it
- + Available in a 3" length

CURVYMAN™

CORD SUPERVISOR



CVM-03-01

Made of durable, lightweight plastic, Curvyman's unique physique was made for keeping unruly ear buds and headsets in order. Pop one end of your cord through a hole at his base, wrap it up around his middle, clip the other end through the second slit at his top, and your cord stays tangle-free and organized when not in use. Or, just wrap the slack around his middle and keep your cord close-fitting and tidy while you're running, working, traveling, or otherwise on the go.

AVAILABLE COLORS



- ⊕ Keep your cords convenient and tangle-free
- ⊕ Comes with a Size #0 plastic S-Biner attachment so you can clip him anywhere

CLIPCASE SIDEWAYS™



CCSXL-03-01

Made of durable ballistic material to protect from impacts, and accented with weather-resistant, rugged hypalon material, this holster is designed to keep your phone safe and at-hand on your belt or waistband, in a fixed horizontal position. Your phone will stay secure with a durable hook and loop lid closure, and an interior pocket provides a handy place to store ID, credit cards, or cash.

AVAILABLE COLORS



- ⊕ Three universal sizes: designed to fit nearly any mobile device shapes and styles on the market—with or without form fit cases. NEW XL size is designed to fit larger screen smartphones
- ⊕ Rugged flex clip ensures confident attachment to waistbands, belts, or straps up to 2-3/16" wide
- ⊕ Internal pocket holds credit cards, ID, currency and more for convenient access
- ⊕ Available in Black and Mossy Oak® Break-Up Infinity®

CLIPCASE CARGO™



CCCT-03-01

The ClipCase Cargo safeguards your phone in rugged conditions. Made of durable ballistic material and equipped with a fully enclosed bottom, it absorbs shocks and shields your items from the elements. With a patented flex clip that attaches securely to your belt, the ClipCase Cargo fully rotates for access at any angle, and even locks in eight different positions.

AVAILABLE COLORS



- ⊕ Strong flex-clip design rotates 360 degrees and locks in 8 positions for ultimate comfort and versatility
- ⊕ Universally sized; several sizes available that are designed to fit nearly any phone or device on the market, with or without a form fit case
- ⊕ Two pockets on the case—one inside and one in the back—hold identification, cash and credit cards
- ⊕ Available in both Black and Mossy Oak® Break-Up™ pattern

CLIPCASE EXECUTIVE™



With its horizontal orientation and high-quality construction, our ClipCase Executive has the refined, professional look that's appropriate in even the most formal executive environment.

From the materials used to the method of construction, our ClipCase Executive is made with attention to every last detail. We start with an exterior of the highest quality black genuine leather, finely stitched and lined with soft material. Durable hook & loop closure keeps your phone safe and secure, and its rugged flex clip fits on belts and waistbands up to 2-3/16" wide. But most importantly, this cell phone case has a slim, low profile that makes it versatile to wear to big investor meetings, casual Fridays, and everything in between.

- ⊕ **Two universal sizes available—large & extra large. Designed to fit nearly all smartphones on the market—with or without form fit cases**
- ⊕ **Features an interior pocket to store ID, credit cards or cash**
- ⊕ **Rugged flex clip ensures confident attachment to waistbands, belts, or straps up to 2-3/16" wide**

HARDSHELL HOLSTER™



This rugged case keeps your smartphone both accessible at your side and protected from the elements. Constructed of high density EVA foam and ballistic nylon, with elastic panels on each side to fit a variety of medium sized smartphones, with or without a protective case.

- ⊕ **Rugged fixed position clip attaches securely to your belt**
- ⊕ **Hook and loop lid closure secures contents**
- ⊕ **Internal pocket holds credit cards, ID, currency and more for convenient access**
- ⊕ **Unique expandable design accommodates a variety of medium size smartphones**

RUGGED CASE SERIES

CONNECT CRADLE™ UNIVERSAL MOBILE DEVICE HOLDER



The Connect Cradle Universal Mobile Device Holder is a versatile way to create multiple docking stations for your cell phone in your car, home, and office. The top and bottom adjustable dipped rubber grips create both cushion and friction, so the Connect Cradle snaps easily and securely around your phone, even one that's already in its own case.

The two durable, flexible Gear Ties on the case's top and bottom are easily inserted into the dashboard vent of your car. They can also be bent to create a stand on your desk, table, or countertop—basically any smooth flat surface.

- ⊕ **Connect Cradle features a Gear Tie Technology for secure and easy connection to vehicle vent or desktop stand**
- ⊕ **Simple to insert and remove device from Connect Cradle**
- ⊕ **Universally sized to fit nearly any mobile device on the market with or without a protective case**

CONNECT CASE™

FOR iPhone® 5S / 5C / 5 / 4S / 4



CNT-IP5-01SC

Stay Connected™. The Connect Case offers protection from every day wear and tear, and dependable shock absorption for your iPhone®. An innovative one-piece flex hinge design allows for easy and secure installation and includes a removable Connect Clip for easy transition to Connect Accessories; Connect Cradle and Mobile Mount.

AVAILABLE COLORS (iPhone 5S/5)



AVAILABLE COLORS (iPhone 5C)



AVAILABLE COLORS (iPhone 4S/4)



- + Available to fit the iPhone® 5S/5C/5 or iPhone® 4S/4 with eye-catching colors available
- + High strength, shatterproof Lexan® polycarbonate case and clip construction with positive diamond grip on sides of the case
- + Innovative one piece flex-hinge case design allows for easy and secure iPhone® installation
- + Includes a convenient S-Biner carry clip, a custom sized anti-fingerprint clear screen protector, a microfiber cleaning cloth, and screen protector installation card

CONNECT CASE™

FOR SAMSUNG GALAXY S®4



CNT-GS4-01SC

The Connect Case for the Samsung Galaxy S®4 is designed to perfectly fit this elegant phone's sleek, unique profile. Made of high grade shatterproof Lexan® polycarbonate, it's slim, lightweight, durable and dependable. Specially tailored to keep the features of the Samsung Galaxy S®4 accessible at all times, it provides state-of-the-art shock-absorption that shields from every day wear and tear. An innovative flex-hinge design makes insertion and removal from the case quick and easy and allows for transition to Connect Accessories; Connect Cradle and Mobile Mount. The Connect Case has a soft-touch feel and positive diamond grip pattern in a slim-line design that mirrors the sleek shape and size of the Samsung Galaxy S®4.

AVAILABLE COLORS



- + High strength, shatterproof Lexan® polycarbonate case and clip construction with positive diamond grip on sides of the case
- + Innovative one piece flex-hinge case design allows for easy and secure installation
- + Includes a convenient S-Biner carry clip, a custom sized anti-fingerprint clear screen protector, a microfiber cleaning cloth, and screen protector installation card

CONNECT MOBILE MOUNT™



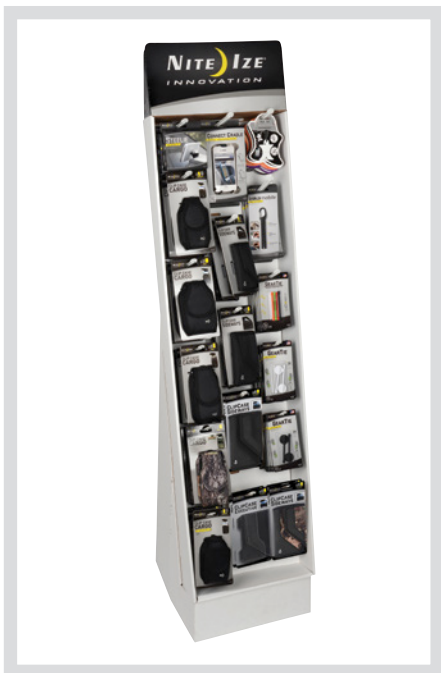
CNTMM-08

The Connect Mobile Mount attaches your Connect Case securely and conveniently to any handlebar providing safe, easy accessibility to your device while on the go. The Mobile Mount fits onto nearly any diameter handlebar so you can read your GPS, check your workout apps, and monitor your messages with ease.

- + The Connect Mobile Mount attaches to the Connect Accessory Port on the body of the Connect Case
- + Connect Mobile Mount features two Gear Tie Reusable Rubber Twist Ties to easily connect to most any diameter handlebar with a simple twist

MERCHANDISING DISPLAY STYLES

Nite Ize features a variety of different display styles. We've included a few examples below, but please feel free to visit our website, or speak to your Nite Ize salesperson to see our full display assortment.



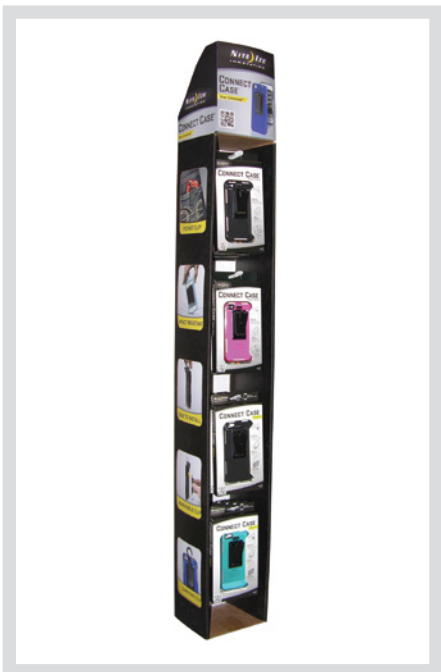
FLOOR DISPLAYS



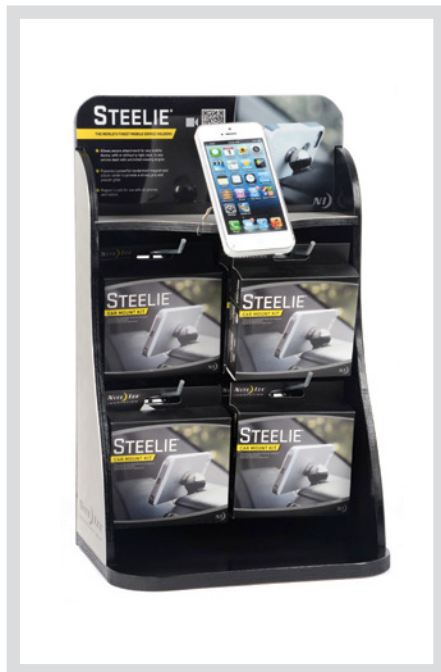
**PERMANENT FLOOR
DISPLAYS**



GRAVITY BINS



SIDE KICK DISPLAYS



PRODUCT DEMO DISPLAYS



**NITE IZE IS PROUD TO
BE AN AUTHORIZED
MASTER DISTRIBUTOR
OF OTTERBOX®
PRODUCTS.**

Please contact your salesperson
for additional information.



FOR MORE PRODUCTS AND INFORMATION
PLEASE VISIT **NITEIZE.COM**



5660 CENTRAL AVENUE, BOULDER, CO 80301 USA
PHONE: 303-449-2576 • FAX: 303-449-2013 • TOLL FREE: 1-800-678-6483