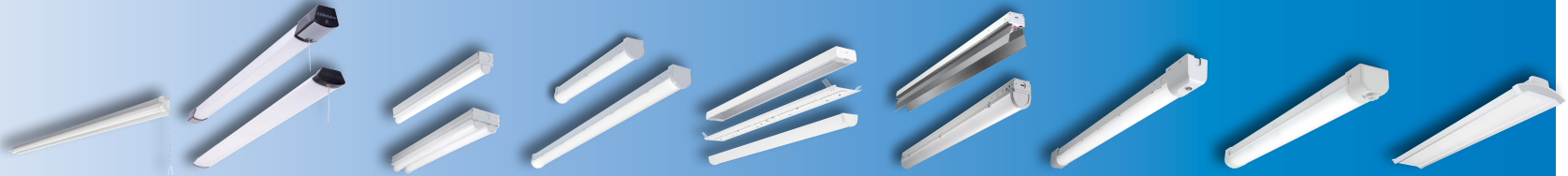


Good

Better

Best

Click on products to learn more



		APSHP	SHP	ST	SLSTP	SSRK Retrofit	SNLED	SRL	SWLED	WSL
APPLICABILITY	Education			★★	★★★★	★	★★★★	★★★★	★★★★	★★
	Office			★★	★★★★	★	★★★★	★★★★	★★★★	★★★★
	Healthcare				★	★	★★	★★	★	★★
	Retail			★	★★	★★★★	★★★★	★★★★	★	★★★★
	Industrial			★★	★★	★★★★	★★★★	★★★★	★★	★★
	Residential	★★★★	★★★★	★★★★	★★					
FEATURES / PERFORMANCE	Length	3', 4' Nominal	4' Nominal	2', 4', 8'	2', 4', 8'	4', 8'	2', 4', 8'	4', 8'	4'	4', 8'
	lm/W (Max)	105	105	108	125	159	150	149	150	121
	Lum (Max)	4,000	4,600	8,400	10,500	8,000 / 4 ft.	17,000	11,000	8,000	16,000
	Life (@60K)	L70/50K	L70/50K	L70/50K	L70/50K	L94	L87	L82	L91	L81
	Lens	Lens Optic and Reflector	Frost, Poly	White, Single or Dual Lens	Clear, Poly	Frost, Acrylic	Frost, Acrylic	Frost, Acrylic	(Vandal Resistant) Frost, Acrylic	WaveStream, Acrylic
	Emergency	None	None	None	None	Integrated	Integrated	Integrated	Integrated	Integrated
	CRI	80+	80+	80+	80+	80+	80+	80+	80+	80+
	Sensor Location	N/A	N/A	Remote	Simple ("CS")	N/A	Integrated	Integrated	Integrated	Integrated
	DLC	No	Energy Star	Standard	Standard	Premium	Premium	Premium	Standard	Standard
INTEGRATED CONTROLS	Basic Occupancy				✓	✓	✓	✓	✓	✓
	Stand Alone Daylight / Occupancy					✓	✓	✓	✓	✓
	WaveLinx						✓	✓	✓	✓
	LumaWatt Pro						✓	✓	✓	✓
	DLVP									✓

Notes: 1. ★★★★★ = high applicability, ★★ = medium applicability, ★ = low applicability, blank = non-applicable