

The logo for Mayco Industries, Inc. features a stylized 'M' composed of two curved lines: a red one on top and a dark blue one on the bottom, both curving to the right.

Mayco Industries, Inc.

A Metalico Company

The Leader in Lead Fabrication



Mayco Inc. is the largest fabricator of lead based products, other than batteries, in the United States. The Company manufactures and sells its lead sheet and other lead products on a nationwide basis to a diverse industrial customer base. MAYCO operates two plants; one is located in Birmingham, Alabama where the headquarters is located. The other is located in Granite City, Illinois.

Sheet Lead

MAYCO's lead sheet is ideal for building, industrial, waterproofing, and various shielding requirements including x-ray radiation & nuclear shielding. Mayco has the product knowledge and the manufacturing capability to match your needs with the right thickness and composition of lead sheet for your product or project. The standard sheeting is rolled from 99.5% pure lead or better. Rolls are from 6 inches to 8 ft. widths and up to 25 ft. lengths. Most other sizes are available upon request, along with our Plate, Brick, Circles and Special fabricated products.



Strip Lead

MAYCO's strip lead is an ideal form of sheet lead for building, industrial, water/proofing and flashing applications and come in 50 lb. rolls for ease of handling. Our strip lead is also available in large coils.



Standard Thickness

2 1/2 lb., 3 lb., and 4 lb.

Standard widths in 50 lb. rolls

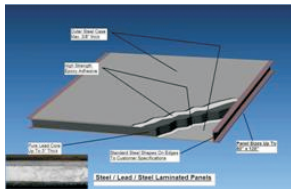
6", 8", 10", 12", 14", 16", and 18".

Other sizes and thicknesses are available upon request

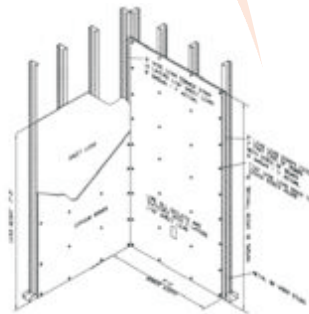
Radiation Shielding / Casting

MAYCO Industries is a leading manufacturer of lead based Radiation Shielding Products lead-lined drywall, plywood, lead strip and discs.

MAYCO supplies leaded x-ray glass, lead lined telescopic and two piece slip frames and other radiation shielding construction materials such as flat lead brick and interlocking brick in various sizes.



Structural Laminated Steel Plate
Used in specific applications where heavy lead shielding is required and steel is required for integrity.



Casting

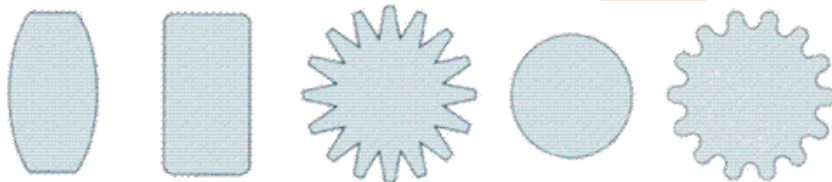
MAYCO Industries has been providing products and services for the nuclear energy sector for over 50 years. Lead pours in any size to 120,000 lbs. We are leaders in all types of structural lead pours including nuclear casks, storage containers, and hot cells as well as lead brick, pipe sleeves and other cast lead elements.

MAYCO can meet your specifications and we will provide engineering assistance. We are precision leaders with millions of pounds per year of all casting types.



Lead Anodes

MAYCO lead anodes are available in a variety of shapes and lead alloys. The elliptical shape has proven to be the most popular. These lead anodes are manufactured of the same high standards as all MAYCO solder products. All MAYCO lead anodes are normally supplied drilled and tapped. Please contact us for anode pricing and availability.



Many other shapes available upon request – also special custom fabrications to any specification.

Elliptical lead anodes

1-1/2" x 3"
2" x 3"

Rectangular lead anode

1" x 1-1/2" 1-1/2" x 4"
1" x 3" 1-1/2" x 3"
1" x 4" 2" x 4"
1/2" x 3"

Star-Shaped lead anodes

O.D.
3"
2-3/4"
16 Points

Round lead anode

Diameter
1-1/2"
1-3/4"
2"

Corrugated lead alloy anode

Round Ripple
Diameter
1-1/2"
2"

Roofing

MAYCO's flashings are made to meet any architectural or Government Specifications. To order Special Flashings, specify weight of lead, size of flange or base, height of boot and pitch of roof.



2 1/2(lb) Lead Flashings

Residential & Commercial Standard and Custom Flashings

2 1/2lb Base with 2 1/2lb Riser Seamless Adjustable Riser Residential & Commercial Flashing

Suitable for composition & other styles roofing that don't require conformity to its shape, as with tile roofs. This flashing is an adjustable flashing.



Pipe Size	Base Size	ID	2 1/2 LB Base 2.5 LB Riser	Qty / Box
1/2 in	8 in x 10 in	1.00	1/2 in Adj.	12
3/4 in	8 in x 10 in	1.25	3/4 in Adj.	12
1 in	8 in x 10 in	1.50	1 in Adj.	12
1-1/4 in	8 in x 10 in	1.75	1-1/4 in Adj.	12
1-1/2 in	8 in x 10 in	2.25	1-1/2 in Adj.	12
2 in	10 in x 10 in	2.75	2 in Adj.	12
2-1/2 in	10 in x 12 in	3.25	2-1/2 in Adj.	6
3 in	10 in x 12 in	3.75	3 in Adj.	6
4 in	10 in x 12 in	4.75	4 in Adj.	6

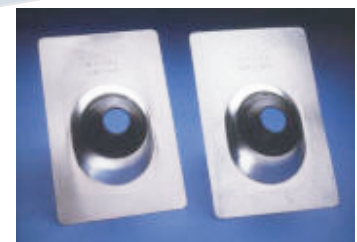


Tile Flashing Lead (Available in Custom Sizes)

Pipe Size	Base Size	ID	Tile Base 2 1/2LB Base 2.5 LB Riser	Qty / Box
1-1/2 in	18 in x 18 in	2.25	1-1/2 in TB Adj.	6
2 in	18 in x 18 in	2.75	2 in TB Adj.	6
2-1/2 in	18 in x 18 in	3.25	2-1/2 in TB Adj.	6
3 in	18 in x 18 in	3.75	3 in TB Adj.	6
4 in	18 in x 18 in	4.75	4 in TB Adj.	6

Auto Caulk Flashings

MAYCO's "AUTO-CAULK" flexible seal is die-formed to flashing. Completely waterproof and leak proof, will not crack, chip or peel. Adjustable to most pitched roofs. Available in 4 sizes to fit any type vent stack (Plastic, Glass, Copper, Steel, standard and extra heavy Soil Pipe, DWV and Transite; 1 1/2", 2", 3" and 4", 3/1 combo and 3/4 combo. MAYCO "AUTO-CAULK" (Automatic Caulk) "Solid Seal" Roof Flashings are manufactured in aluminum and galvanized steel bases with EPDM Rubber Collar permanently attached. Fits up to 40° roof pitch. Not for Hot Mop Applications. EPDM Rubber collar injection molded to offer superior resistance to weather, ozone and oxidation.



NOTE: Do not use petroleum based products on collar

Code B Assemblies

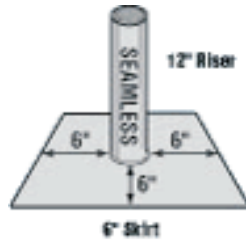
- Fan Jacks, China Caps, T-Tops, Dormer Vents, 2# Lead Base, Galvanized Cone Code B Assemblies / Item: SB B-Vent
- Heated exhaust such as hot water heaters and furnaces
- Used with code cap (item ST) in areas where local code requires.
- Four straps allow most manufacturers' tops to fit.



4(LB) Lead Flashings

Residential & Commercial Standard and Custom Flashings

4 Pound (Base & Riser) Lead Flashing, Standard 12inch Seamless Riser, Standard 6 inch skirt, Commercial Flashing: Used primarily on flat roof hot mop applications. Most Specs call for a 4 in to 6 in skirt, making this a very cost effective flashing for that application.

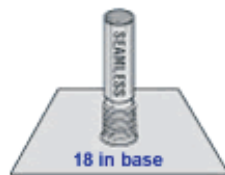


Base Size	ID of Riser	Fits Pipe
12in sq	0.75	1/2in EMT
12in sq	1.00	1/2in or 3/4in EMT
12in sq	1.25	3/4in or 1in EMT
12in sq	1.50	1in
14in sq	1.75	1-1/4in or 1-1/4in EMT
14in sq	2.00	1-1/2in EMT
14in sq	2.25	1-1/2in or 2in EMT
14in sq	2.50	
14in sq	2.75	2in
15in sq	3.00	2-1/2 in EMT
15in sq	3.25	2-1/2in
15in sq	3.75	3in or 3in EMT
16in sq	4.00	
16in sq	4.75	4in or 4in EMT
17in sq	5.00	
17in sq	5.88	5in
18in sq	6.88	6in
20.5in sq	8.88	8in

Galvanized Cone (code B/025)			T-Tops - SVT T-Top		China Cap Vent	
Size	Small Base	Large Base	Small Base	Large Base	Small Base	Large Base
3 in	21x22 in	25x27 in	18x20 in	24x25 in	18x20 in	24x25 in
4 in	21x22 in	25x27 in	18x20 in	24x25 in	18x20 in	24x25 in
5 in	24x25 in	28.5x30.5	21x22 in	25x27 in	21x22 in	25x27 in
6 in	24x25 in	6 in	21x22 in	25x27 in	21x22 in	25x27 in
7 in	25x27 in	7 in	24x25 in	28.5x30.5 in	24x25 in	28.5x30.5 in
8 in	25x27 in	8 in	24x25 in	28.5x30.5 in	24x25 in	28.5x30.5 in
10 in	N/A	10 in	N/A	N/A	N/A	N/A
4in Oval	6in f/s & 8in b	4in Oval	N/A	N/A	N/A	N/A
6in Oval	6in f/s & 8in b	6in Oval	N/A	N/A	N/A	N/A

4 Pound Base & Riser

12 inch Seamless Adjustable Riser 18 inch square base, typically packed 4 per box Residential - the adjustable riser allows for different roof pitch.



Base Size	ID of Riser	Fits Pipe
18" sq.	1.00	1/2"
18" sq.	1.25	3/4"
18" sq.	1.50	1"
18" sq.	1.75	1-1/4"
18" sq.	2.25	1-1/2"
18" sq.	2.75	2"
18" sq.	3.25	2-1/2"
18" sq.	3.75	3"
18" sq.	4.75	4"

Neo-Poly

The New SUPER NEOPOLY is now available in the 1-1/2", 2", 3" and the 1-1/2", 2" and 3" combo. It fits a flat to a 15/12 pitch (51 degree) with a new stiffer polypropylene base and has a new and improved elastomer collar. Not for hot-mopped or built-up roof applications.

*Replaces all current neopoly flashings, except for the 3/4 combo and the 4".



Plumbing

Lead Pipe

MAYCO lead pipe is extruded to uniform wall thickness and quality. Lead pipe sizes from 2" thru 10" are shipped in lengths up to 10 ft.; packed in fiber tubes to ensure straightness. Sizes 3/8" thru 1 1/2" can be furnished in coils.



Solder

MAYCO provides to customer specifications, several alloys, lead solder and lead free solder, for many applications including plumbing solder, industrial solders and stained glass solder. Wire solders produced to meet Federal Specification QQS-571 and ASTM B-32 on 1 lb., 5 lb. and 25 lb. spools and in extruded bar solders in 1/4 lb., 1/3 lb., 1/2 lb. and 1 lb. bars.

50% Tin, 50% Lead
60% Tin, 40% Lead
63% Tin, 37% Lead
40% Tin, 60% Lead



Lead Wool

Lead wool, a form of caulking lead, is long fine strands of chemical grade lead which is twisted into 5/8" rope for use in various applications. Our cold packing is available in 5 lb. cartons or 50 lb. waterproof bags. It averages about 2-1/2 ft. to one pound. Mayco Lead wool is certified to meet Federal Specification QQ-C-40.



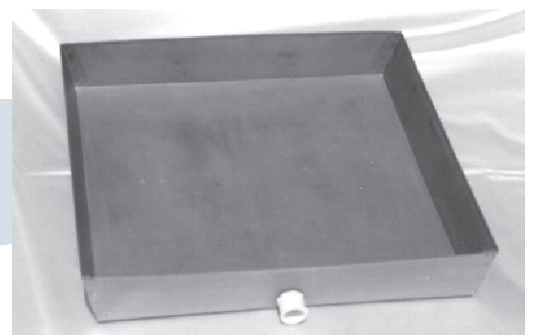
Ingot Lead

Mayco ingot lead is manufactured in 25 lb strings consisting of five 5 lb sections. Mayco's lead ingots are pure and easy to work with.



Galvanized Heater Pans

MAYCO's galvanized hot water heater pans which protect against water heater failure and water damage are 24 gauge steel and available in sizes 22" x 22", 24" x 24", 26" x 26", 28" x 28" and 30" x 30" and are 2" and 4" deep with other sizes available upon request. 30" x 30" x 6" deep pans are also available in areas where they are required by code. (Packaged 5 per box)



Galvanized Heater Stands

MAYCO'S galvanized hot water heater stands are made from 16 gauge steel, with an 18" x 18" top and are 17" tall. E-Z installation, no bolts or screws, packaged one per box.



Lead Bends & Stubs

Bends are produced on a bend/trap press that allows bending of the pipe while extruding the lead. Stub is the name given for short pieces of pipe.



Pig Lead

MAYCO offers pig lead in the following alloys:
ASTM B-29-92, Federal Specification QQ-L-171e
Grade A, Grade B and Grade C.



Stained Glass Products

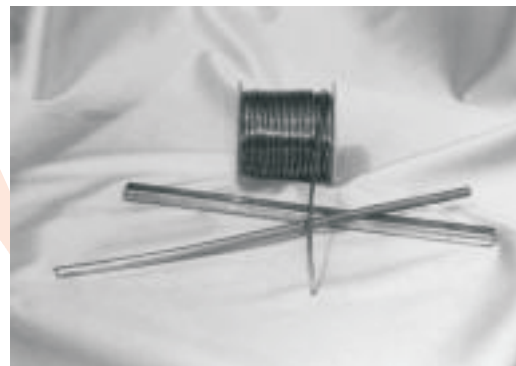
Lead Came

MAYCO'S Premier brand came lead is the leader in the industry. For nearly 40 years, we have served the stained glass industry with a high quality lead came known for its consistency and workability. We strive to meet any special profile requirements. Our original 15 sizes have increased to over 100. That is why many of the leading leaded glass artist in the country prefer Mayco Industries' came lead for their projects.



Lead Wire - Lead Rod - Misc Lead Extrusions

For a wide variety of applications such as burning bar, lead anodes, lead buoy weights and lead ballast, we offer many shapes and sizes in both spools, cut lengths and in various lead alloys. Special size requests are always considered



Lead Profiles



Alloys

Antimonial Lead

Antimonial lead is produced by adding antimony to lead. Antimony is a harder metal than lead and thus, when mixed with lead, makes it more hard and/or firmer. The percentage of antimony depends upon your application and/or specifications. Antimonial lead is available in sheet, extruded, and cast forms.

Britannia Alloys

Britannia alloys, which are used for organ pipe, engraving metal or caskets, are available from our Britt Mill. This special mill produces special required ultra smooth surfaces/high finished materials which are necessary in some applications.

Pure Tin

MAYCO can supply pure tin bars, ingots, pipe, circles, sheets and wires in various sizes and diameters. Special tin alloys are also available. Certificate of Analysis furnished upon request. Please contact us with your specifications.

Bullet Alloys

Pure Virgin Alloys Stock

2% Tin—6% Antimony—92% Lead

2% Tin—7% Antimony—91% Lead

20-1 Alloy—95% Lead—5% Tin

MAYCO can also custom alloy lead in 2000 lb. minimum batches.

Babbitt Material

Available in 8# notch bars, packed in 50# cartons in the following types:

- No. 4 Babbitt – A common hardware grade used for various non-critical, low speed applications
- Universal Babbitt – Mainly for medium speed applications, such as unidirectional and moderate cyclic loads.
- Genuine Babbitt – Virtually lead free. A high tin content Babbitt typically used for high speed and low-pressure applications.
- Other special types and grades are available

Lawrence Brand Lead Shot



Lawrence Brand Lead Shot is manufactured by Mayco Industries

High Antimony Magnum Lead Shot, matches the performance of premier factory round ammunition, resulting in tight patterns, shorter strings, maximum density and greater range.

Copper-Plated Lead Shot retains more shot with less deformations, in sorter strings, at maximum velocity and penetration. Results: uniformly superior patterns required for long-range hunting. Wax coated

No. 9, 8, 7-1/2, 6, 5, & 4 Graphite coated Chilled Lead Shot (American Standard). Equivalent Hardness Factor of: 2% Antimonial Lead Alloy

No. 9, 8-1/2, 8, 7-1/2, 7, 6, 5 & 4 Graphite coated High Antimony Magnum Lead Shot (American Standard) with Equivalent Hardness Factor of: 5% Antimonial Lead Alloy

No. 7-1/2, 6, 5, & 4 Wax-Coated Copper Plated Lead Shot (American Standard) with Equivalent Hardness Factor of: 5% Antimonial Lead Alloy

Please feel free to visit our web site for more detailed information on any of our products

www.maycoindustries.com
sales@maycoindustries.com



Mayco Industries, Inc.

A Metalico Company

Mayco Industries-Birmingham

18 West Oxmoor Road
Birmingham, AL 35209
Ph: 800-749-6061
Office: 205-942-4242
Fax: 205-945-8704

Mayco Industries-Granite City

1200 16th Street
Granite City, IL 62040
Ph: 800-749-6061
Office: 618-451-4400
Fax: 618-451-9310

www.maycoindustries.com
sales@maycoindustries.com