

THE ULTIMATE WORK PLATFORMS

WIDER STANCE

STURDY FOOT HOLD

MADE WITH SAFETY IN MIND

BUILT TOUGH FOR
SAFETY

BETTER SELL THROUGH WITH RETAIL READ PACKAGING



Discover Metaltech's fresh, new products and package designs with our innovative mobile scaffold work platform offering. Innovative safety rail, foldaway tool shelf, locking mechanisms are only a few of the features included in this category. These "No Tool Required" work platforms offer contractors and consumers affordability, safety and ease of use, all in easy to merchandise packaging.

NEW

DRYWALL & PANEL LIFT

- One-person operation
- Hang drywall up to 11' high - Capacity 150 lb
- Three 5" double lock heavy-duty swivel casters
- Cradle tilts for sloped ceiling or vertical wall
- Fast action single stage winch with silent cam lock brake
- Dismantles and folds in 5 parts for easy transport and storage



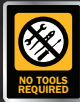
150 lb
LOAD CAPACITY



6' BAKER STYLE SCAFFOLD

1,000 lb
LOAD CAPACITY

12'
REACH



MULTI PURPOSE

Suitable and safe for all types of interior work. At 30" (76 cm) wide, it can easily roll through doorways.



STACKABLE UP TO 18' (5.5 M)

Easily stackable up to three units high in order to reach a range of 24' (7.4 m).



QUICK AND EASY HEIGHT ADJUSTMENT

Platform height adjusts at 2" (5 cm) increments from 27" to 73" (68.6 to 185 cm).



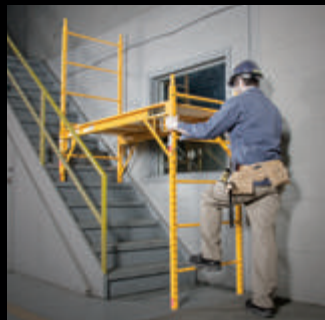
DOUBLE LOCKING CASTERS

High capacity 5 in. (13 cm) casters with both wheel and swivel locks.



STORAGE & TRANSPORT

To haul your equipment and heavy loads to and from job sites. 1,000 lb capacity.



STAIRWAYS

Each end can adjust separately to be used on both level surfaces and stairways.

PRODUCT CODE	I-CISC
ASSEMBLED DIMENSIONS (WXDXH)	74.75 X 29.75 X 75 IN. (189.9 X 75.6 X 190.5 CM)
PACKAGE DIMENSIONS (WXDXH)	75 X 30.5 X 5.25 IN. (190.5 X 77.5 X 13.3 CM)
WEIGHT	119 LB (54 KG)
LOAD CAPACITY	1,000 LB (454 KG) COMBINED WEIGHT OF USER + MATERIALS
WORKING HEIGHTS	FROM 27 TO 73 IN. (68.6 TO 185 CM), 2 IN. (5 CM) INCREMENT ADJUSTABLE HEIGHTS
REACH	12 FT (3.7 M), STACKABLE UP TO 3 UNITS HIGH FOR 24 FT (7.4 M) REACH
CASTERS	5 IN. (13 CM) DOUBLE LOCKING HEAVY DUTY
UPC CODE	778300200108

COMPLETE TOWER SETS

WITH OUTRIGGERS
AND GUARDRAILS SYSTEMS



**2 UNITS
TOWER**

12'



**3 UNITS
TOWER**

18'

COMPLETE 12' SET CONTENT

- 2 Baker Scaffold Structure
- 4 14" (35.5 cm) Outriggers
- 1 Guardrails system
- 8 Heavy duty casters

836 lb
LOAD CAPACITY

17.5'
REACH

PRODUCT CODE	I-T3CISC
ASSEMBLED DIMENSIONS (W X D X H)	74 X 58.5 X 183 IN. (1.88 X 1.49 X 4.65 M)
PACKAGE DIMENSIONS (W X D X H)	75.2 X 43.4 X 15 IN. (191 X 110.2 X 38.1 CM)
PACKAGING WEIGHT	337.2 LB (153 KG)
LOAD CAPACITY	840 LB (381 KG) COMBINED WEIGHT OF USER + MATERIALS
WORKING HEIGHTS	FROM 2.25 TO 11.5 FT (0.68 TO 3.51 M) HEIGHT INCREMENT OF 2 IN. (5 CM)
REACH	17.5 FT (5.3 M)
CASTERS	5 IN. (13 CM) DOUBLE LOCKING HEAVY DUTY
UPC CODE	778300200009

COMPLETE 18' SET CONTENT

- 3 Baker Scaffold Structure
- 4 46" (117 cm) Outriggers
- 1 Guardrails system
- 12 Heavy duty casters

730 lb
LOAD CAPACITY

24'
REACH

PRODUCT CODE	I-T3CISC
ASSEMBLED DIMENSIONS (W X D X H)	74 X 122 X 236 IN. (1.88 X 3.1 X 6 M)
PACKAGE DIMENSIONS (W X D X H)	75.2 X 51 X 30.3 IN. (191 X 130 X 77 CM)
PACKAGING WEIGHT	619 LB (280.8 KG)
LOAD CAPACITY	733 LB (332.5 KG) COMBINED WEIGHT OF USER + MATERIALS
WORKING HEIGHTS	FROM 2.25 TO 16.9 FT (0.68 TO 5.15 M) HEIGHT INCREMENT OF 2 IN. (5 CM)
REACH	24 FT (7.3 M)
CASTERS	5 IN. (13 CM) DOUBLE LOCKING HEAVY DUTY
UPC CODE	778300200511

AVAILABLE OPTIONS



GUARDRAILS SYSTEM

PRODUCT CODE	I-CISGRJP
ASSEMBLED DIMENSIONS (WxDxH)	69.75 X 29.25 X 44.5 IN. (177.2 X 74.3 X 113 CM)
PACKAGE DIMENSIONS (WxDxH)	46 X 31.25 X 4.5 IN. (116.8 X 79.4 X 11.4 CM)
WEIGHT	59 LB (26.8 KG)
COMPATIBLE WITH METALTECH MODELS:	I-CISC, I-CAISC, I-CISCTP, I-CISCAS, I-BMSS, I-CISCDW, I-CISCH1



39" HIGH EXTENSION

PRODUCT CODE	I-HSEX4PPNCAS
ASSEMBLED DIMENSIONS (WxDxH)	73.75 X 29 X 42.5 IN. (187.3 X 73.7 X 108 CM)
PACKAGE DIMENSIONS (WxDxH)	83.5 X 30.75 X 3.75 IN. (212.1 X 78.1 X 9.5 CM)
WEIGHT	60.2 LB (27.3 KG)
COMPATIBLE WITH METALTECH MODELS:	I-CISC, I-CISCAS, I-CISCTP, I-BMSS, I-CISCDW, I-CISCH1



PLATFORM WITH TRAP DOOR

PRODUCT CODE	I-CISPT
ASSEMBLED DIMENSIONS (WxDxH)	67 X 29 X 1.44 IN. (170.2 X 73.7 X 3.7 CM)
PACKAGE DIMENSIONS (WxDxH)	68.4 X 30.4 X 1.91 IN. (173.8 X 77.3 X 4.85 CM)
WEIGHT	38 LB (17.3 KG)
COMPATIBLE WITH METALTECH MODELS:	I-CISC, I-CISCTP, I-CISCAS, I-CISCDW, I-CISCH1



SET OF 14" OUTRIGGERS

PRODUCT CODE	I-CIS04
ASSEMBLED DIMENSIONS (WxDxH)	19.25 X 4.5 X 24 IN. (48.7 X 11 X 61 CM)
PACKAGE DIMENSIONS (WxDxH)	24 X 16.5 X 5 IN. (61 X 41.9 X 12.7 CM)
WEIGHT	33 LB (15 KG)
COMPATIBLE WITH METALTECH MODELS:	I-CISC, I-CAISC, I-CISCTP, I-CISCAS, I-CISCH1



SET OF 46" OUTRIGGERS

PRODUCT CODE	I-CIS04TT
ASSEMBLED DIMENSIONS (WxDxH)	52.75 X 3.75 X 52.25 IN. (134 X 9.5 X 132.7 CM)
PACKAGE DIMENSIONS (WxDxH)	54.5 X 50.25 X 4.25 IN. (138.4 X 127.6 X 10.8 CM)
WEIGHT	110 LB (49.9 KG)
COMPATIBLE WITH METALTECH MODELS:	I-CISC, I-CISCTP, I-CISCAS, I-CISCPY, I-CISCDW, I-CISCH1



TOOL SHELF

PRODUCT CODE	I-CISTR
ASSEMBLED DIMENSIONS (WxDxH)	30.25 X 20 X 2.75 IN. (76.8 X 50.8 X 6.7 CM)
PACKAGE DIMENSIONS (WxDxH)	31.25 X 20.75 X 9.25 IN. (79.4 X 52.7 X 23.5 CM)
WEIGHT	5.5 LB (2.5 KG)
COMPATIBLE WITH METALTECH MODELS:	I-CISC, I-CAISC, I-CISCTP, I-CISCAS, I-CISCPY, I-CISCDW, I-IRC, I-CISCH1



SET OF 4 LEVELING JACKS

PRODUCT CODE	I-IBSJP12H4
ASSEMBLED DIMENSIONS (WxDxH)	9.5 X 5.5 X 12.25 IN. (23.6 X 13.5 X 31 CM)
PACKAGE DIMENSIONS (WxDxH)	13 X 13 X 8 IN. (33.6 X 33.2 X 20.4 CM)
WEIGHT	24.2 LB (11 KG)
COMPATIBLE WITH METALTECH MODELS:	I-CISC, I-CAISC, I-CISCTP, I-CISCAS, I-BMSS, I-CISCDW, I-CISCH1



SET OF 4 BASE PLATES

PRODUCT CODE	I-IBBF4
ASSEMBLED DIMENSIONS (WxDxH)	4.75 X 4.75 X 4.75 IN. (12 X 12 X 12 CM)
PACKAGE DIMENSIONS (WxDxH)	11 X 5.25 X 5.5 IN. (27.8 X 13.3 X 13.8 CM)
WEIGHT	10.1 LB (4.6 KG)
COMPATIBLE WITH METALTECH MODELS:	I-CISC, I-CAISC, I-CISCTP, I-CISCAS, I-CISCPY, I-BMSS, I-CISCDW, I-CISCH1



SAFETY BRAKES

PRODUCT CODE	I-ISL
ASSEMBLED DIMENSIONS (WxDxH)	30.25 X 20 X 2.75 IN. (76.8 X 50.8 X 6.7 CM)
PACKAGE DIMENSIONS (WxDxH)	67.1 X 4.25 X 4.25 IN. (170.4 X 10.8 X 10.8 CM)
WEIGHT	31.1 LB (14.1 KG)
COMPATIBLE WITH METALTECH MODELS:	I-CISC, I-CAISC, I-CISCTP, I-CISCAS, I-CISCPY, I-BMSS, I-CISCDW, I-CISCH1

JOBSITE SERIES 6'

850_{lb}
LOAD CAPACITY

12'
REACH

NO TOOLS REQUIRED



STACKABLE UP TO 12' (3.7 M)
Easily stackable up to two units high in order to reach a range of 18' (5.5 m).

ADJUSTABLE PLATFORMS
Adjustable platform in 12 in. increments (30.5 cm)



MULTI-LEVEL WORKING AREA
Multi-level working area. Adjust platforms up to the desired level for a comfortable workplace.

EASY STORAGE
Folds flat for compact storage and transport.

PRODUCT CODE	I-IRC
ASSEMBLED DIMENSIONS (WxD x H)	75 X 30.5 X 78.25 IN. (190.5 X 77.5 X 198.8 CM)
PACKAGE DIMENSIONS (WxD x H)	76.75 X 31 X 6.75 IN. (195 X 78.7 X 17.2 CM)
WEIGHT	151 LB (68.5KG)
LOAD CAPACITY	850 LB (385 KG) COMBINED WEIGHT OF USER + MATERIALS
WORKING HEIGHTS	13-25-37-49-61-73 IN. (33-63.5-94-124.5-155-185.5 CM)
REACH	12 FT (3.7 M) STACKABLE UP TO 2 UNITS FOR 18 FT (5.5 M) REACH
CASTERS	5 IN. (13 CM) DOUBLE LOCKING HEAVY DUTY
OPTIONS	GUARDRAILS / SET OF 4 OUTRIGGERS / TOOL SHELF / 3 FT (91.4 CM) OR 6 FT (182.9 CM) EXTENSIONS
UPC CODE	778300400157

JOBSITE SERIES 5'

900_{lb}
LOAD CAPACITY

10'
REACH

NO TOOLS REQUIRED



TOOL SHELF & SAFETY RAIL
Safety rail to hold on to, for stability. Convenient fold away tool shelf for paint can, bucket, screws, nails and tools.

TRANSPORT
Use it as a cart to haul your equipment and heavy loads to and from job sites. 900 lb (408 kg) capacity.



TWO-MINUTE ASSEMBLY
No tools required.

STABLE AND STURDY
Double locking 5" wheels, anti-slip platforms and included outriggers provide safety.

PRODUCT CODE	I-MIS
ASSEMBLED DIMENSIONS (WxD x H)	50.5 X 31 X 76.5 IN. (128.3 X 78.7 X 194.3 CM)
PACKAGE DIMENSIONS (WxD x H)	44 X 23 X 7.5 IN. (111.8 X 58.4 X 19.1 CM)
WEIGHT	77 LB (35 KG)
LOAD CAPACITY	900 LB (408 KG) COMBINED WEIGHT OF USER + MATERIALS
WORKING HEIGHTS	11.5 - 25 - 36.5 - 48 IN. (29 - 64 - 93 - 122 CM)
REACH	10 FT (3 M)
CASTERS	5 IN. (13 CM) DOUBLE LOCKING HEAVY DUTY
OPTIONS	N/A
UPC CODE	778300100019



JOBSITE SERIES 4'

500lb
LOAD CAPACITY

9'
REACH



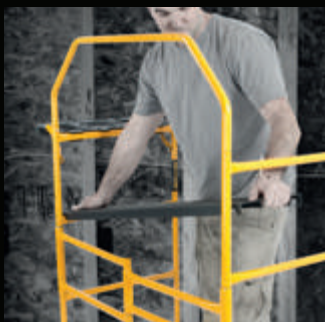
4' WORK PLATFORM

500lb
LOAD CAPACITY

9'
REACH



TOOL SHELF & SAFETY RAIL
Safety rail to hold on to, for stability. Convenient fold away tool shelf for paint can, bucket, screws, nails and tools.



TWO-MINUTE ASSEMBLY
No tools required.



WORKBENCH
Multi-level working area. Adjust platforms up to the desired level for a comfortable workplace.



EASY STORAGE
Folds flat for compact storage and transport.



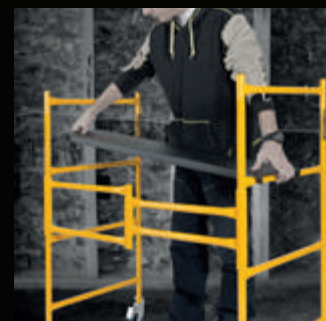
EASY STORAGE
Folds flat for compact storage and transport.



WORKBENCH
Multi-level working area. Adjust platforms up to the desired level for a comfortable workplace.



TRANSPORT
Use it as a cart to haul your equipment and heavy loads to and from job sites. 500 lb (227 kg) capacity.



TWO-MINUTE ASSEMBLY
No tools required.

PRODUCT CODE	I-IMCNT
ASSEMBLED DIMENSIONS (W X D X H)	49.5 X 22.5 X 57.75 IN. (125.7 X 57.2 X 146.7 CM)
PACKAGE DIMENSIONS (W X D X H)	43.25 X 24 X 4.5 IN. (109.9 X 61 X 11.4 CM)
WEIGHT	59 LB (26.8 KG)
LOAD CAPACITY	500 LB (227 KG) COMBINED WEIGHT OF USER + MATERIALS
WORKING HEIGHTS	10 - 21.5 - 33 IN. (25 - 55 - 84 CM)
REACH	9 FT (2.75 M)
CASTERS	4 IN. (10 CM) DOUBLE LOCKING HEAVY DUTY
OPTIONS	N/A
UPC CODE	778300100224

PRODUCT CODE	I-IMCN
ASSEMBLED DIMENSIONS (W X D X H)	41 X 22.5 X 45.75 IN. (104.1 X 57.2 X 116.2 CM)
PACKAGE DIMENSIONS (W X D X H)	43.25 X 24 X 3.75 IN. (109.7 X 60.8 X 9.8 CM)
WEIGHT	50 LB (22.7 KG)
LOAD CAPACITY	500 LB (227 KG) COMBINED WEIGHT OF USER + MATERIALS
WORKING HEIGHTS	10 - 21.5 - 33 PO (25 - 55 - 84 CM)
REACH	9 FT (2.75 M)
CASTERS	4 IN. (10 CM) DOUBLE LOCKING HEAVY DUTY
OPTIONS	N/A
UPC CODE	778300100200



ALU
SERIES **4'**

600 lb
LOAD CAPACITY

9'
REACH



EASY STORAGE

Fold flat for compact storage and transport

PRODUCT CODE	I-IMAC
ASS. DIMENSIONS (WXDXH)	42.25 X 22.25 X 47.75 IN. (107.3 X 56.5 X 121.4 CM)
PKG. DIMENSIONS (WXDXH)	43.75 X 22.5 X 4.75 IN. (111 X 57.2 X 12.1 CM)
WEIGHT	35.2 LB (16 KG)
LOAD CAPACITY	600 LB (272 KG) COMBINED WEIGHT OF USER + MATERIALS
WORKING HEIGHTS	9.5 - 21.25 - 33 IN. (24 - 54 - 84 CM)
REACH	9 FT (2.75 M)
CASTERS	4 IN. (10 CM) DOUBLE LOCKING HEAVY DUTY
OPTIONS	N/A
UPC CODE	778300100408



ALU
SERIES **6'**

700 lb
LOAD CAPACITY

12'
REACH



USE IT AS A CART

To haul your equipment and heavy loads to and from job sites. 700 lb capacity.

PRODUCT CODE	I-CAIRC
ASS. DIMENSIONS (WXDXH)	56.5 X 29 X 72 IN. (143.5 X 73.7 X 182.9 CM)
PKG. DIMENSIONS (WXDXH)	67.5 X 30.5 X 6.5 IN. (171.5 X 77.5 X 16.5 CM)
WEIGHT	67 LB (30.4 KG)
LOAD CAPACITY	700 LB (318 KG) COMBINED WEIGHT OF USER + MATERIALS
WORKING HEIGHTS	11.75 - 23.5 - 35.25 - 47 - 59 - 70.75 IN. (30 - 60 - 90 - 119 - 150 - 180 CM)
REACH	12 FT (3.7 M)
CASTERS	5 IN. (13 CM) DOUBLE LOCKING HEAVY DUTY
OPTIONS	N/A
UPC CODE	778300420155



ALU SERIES
6'BAKER

700 lb
LOAD CAPACITY

12'
REACH



MULTI PURPOSE

Suitable and safe for all types of interior work. Each end can adjust separately to be used on both level surfaces and stairways. At 30" (76 cm) wide, can easily roll through doorways.

PRODUCT CODE	I-CAISC
ASS. DIMENSIONS (WXDXH)	74 X 30.75 X 74.5 IN. (187.7 X 78.2 X 189.5 CM)
PKG. DIMENSIONS (WXDXH)	74.75 X 30.25 X 6.25 IN. (189.7 X 76.9 X 16 CM)
WEIGHT	85 LB (38.6 KG)
LOAD CAPACITY	700 LB (318 KG) COMBINED WEIGHT OF USER + MATERIALS
WORKING HEIGHTS	FROM 26.75 TO 73 IN. (67.9 TO 185.1 CM). 2 IN. (5 CM) INCREMENT ADJUSTABLE HEIGHTS
REACH	12 FT (3.7 M) STACKABLE UP TO 2 UNITS FOR 18 FT (5.5 M) REACH
CASTERS	5 IN. (13 CM) DOUBLE LOCKING HEAVY DUTY
OPTIONS	GUARDRAILS / SET OF 4 OUTRIGGERS / SET OF 4 BASE PLATES / SAFETY BRAKES / SET OF 4 LEVELING JACKS / TOOL SHELF
UPC CODE	778300220106



CUSTOMER SERVICE

T : **1 800 363-7587** (TOLL FREE NUMBER)

F : **1 866 517-7585**

@ : **CS@METALTECH.CO**

WWW.METALTECH.CO

