



AFTR1-KW

15 Amp, 125 Volt Receptacle/Outlet, 20 Amp Feed-Through, Tamper-Resistant, AFCI Receptacle/Outlet, Monochromatic, back and side wired, without wallplate/faceplate, screws and self grounding clip included – White

The SmartlockPro® Outlet Branch Circuit (OBC) AFCI Receptacle offers advanced technology to help protect against electrical fires resulting from arc-faults. Designed to detect a wide range of potentially hazardous arc-faults resulting from damage in branch circuit wiring as well as extensions to branches such as appliances and cord sets, the OBC AFCI responds by interrupting power. This helps reduce the likelihood of the home's electrical system being an ignition source of a fire. Often unseen, arc-faults can occur anywhere in the home's electrical system including within walls, at loose electrical connections or within electrical cords accidentally damaged by impinging furniture. AFCIs are now required by the National Electrical Code® in many areas of the home.

Color: White

UPC Code: 07847762932

Country Of Origin: China

NEMA:
5-15R



Technical Information

Product Features

At Rated Voltage: 1 HP
Type: Duplex Receptacle
Strap Material: Galvanized Steel
Grounding: Self-Grounding
Warranty: 2-Year Limited
Color: White
Termination: Back & Side
Wire: 3
Feature: Tamper-Resistant
NEMA: 5-15R
Series: AFTR1
Voltage: 125 VAC
Amperage: 15 A
Standards and Certifications: UL/CSA
Pole: 2

AC Horsepower Ratings

Dielectric Voltage: Withstands 2000V per UL498
Temperature Rise: Max 30C after 100 cycles OL at 150 percent rated current
At Rated Voltage: 1 HP

Electrical Specifications

Flammability: Rated V-2 per UL 94
Operating Temperature: -35C to +66C
Dielectric Voltage: Withstands 2000V per UL498
Temperature Rise: Max 30C after 100 cycles OL at 150 percent rated current

Environmental Specifications

Body Material: Polycarbonate
Clamps: Brass
Face Material: Thermoplastic
Grounding Screw: Plated Steel
Line Contacts: Brass Double-Wipe .031 Thick
Notes: Wallplate Sold Separately
Terminal Screws: Plated Steel

Terminal Accom.: 14-10 AWG

Terminal ID: Brass-Hot, Green-Ground, Silver-Neutral

Body Material: Polycarbonate

Face Material: Thermoplastic

Terminal Screws: Plated Steel

Line Contacts: Brass Double-Wipe .031 Thick

Yoke: Zinc-Plated Steel

Clamps: Brass

Grounding Screw: Plated Steel

Notes: Wallplate Sold Separately

Mechanical Specifications

Amperage: 15 A

Color: White

Feature: Tamper-Resistant

Grounding: Self-Grounding

NEMA: 5-15R

Pole: 2

Series: AFTR1

Standards and Certifications: UL/CSA

Strap Material: Galvanized Steel

Termination: Back & Side

Voltage: 125 VAC

Warranty: 2-Year Limited

Wire: 3

Product ID: Ratings are permanently marked on device

Terminal ID: Brass-Hot, Green-Ground, Silver-Neutral

Terminal Accom.: 14-10 AWG

Standards and Certifications

ANSI: C-73

CSA C22.2 No. 42: Yes

CSA Technical Information Letter No. M-02A: Yes

NOM: 057

UL1699.A: File E342815

Yoke: Zinc-Plated Steel

UL498: Yes

Operating Temperature: -35C to +66C

UL Fed Spec WC-596: Yes

Flammability: Rated V-2 per UL 94

Material Specifications

Product ID: Ratings are permanently marked on device

Features and Benefits

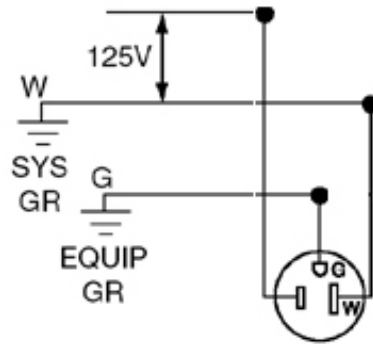
- Use of TEST and RESET buttons is similar to traditional GFCI receptacles of which consumers have become familiar with. This translates into greater acceptance of the technology and a more user-friendly platform
- Automatically tests the AFCI every time the RESET button is depressed; the AFCI will not reset if the AFCI circuit is not functioning properly
- By blocking reset of the AFCI if protection has been compromised, the SmartlockPro OBC AFCI reduces the possibility of end-users incorrectly assuming that a reset AFCI is providing protection when its functionality has been compromised
- A line-load reversal diagnostic feature is provided which prevents the AFCI from being reset and stops power from being fed to the AFCI receptacle face or through to downstream devices; a green LED indicator on the AFCI's face also illuminates to alert the installer to a line-load wiring reversal when the device is in the tripped state
- TR symbol indicates the device's compliance with the latest NEC® requirements for tamper-resistant receptacles in residences and childcare facilities
- Device design reduces nuisance tripping
- Impact-resistant thermoplastic cover and body
- Superior resistance to electrical surges and over-voltages
- Terminals allow for easy wiring options – back and side wire capable
- Compatible with all Decora® devices and wallplates; available in select colors
- Meets or exceeds UL requirements for tripping time on both series and parallel arcs

Patents*

US8242362

*This list is provided for patent marking purposes only. A good faith effort is made to maintain the accuracy and completeness of this list. No legal inference should be drawn from the omission of a patent from this list.

Wiring Diagram



5-15R

SPECIFICATION SUBMITTAL

JOB NAME:	CATALOG NUMBERS:	
<input type="text"/>	<input type="text"/>	<input type="text"/>
JOB NUMBER:	<input type="text"/>	<input type="text"/>

Leviton Manufacturing Co., Inc.

201 North Service Road, Melville, NY 11747

Telephone: +1-800-323-8920 · FAX: +1-800-832-9538 · Tech Line (8:30AM-7:30PM E.S.T. Monday-Friday):
+1-800-824-3005

Leviton Manufacturing of Canada, Ltd.

165 Hymus Boulevard, Pointe Claire, Quebec H9R 1E9 · Telephone: +1-800-469-7890 ·
FAX: +1-800-824-3005 · www.leviton.com/canada

Leviton S. de R.L. de C.V.

Lago Tana 43, Mexico DF, Mexico CP 11290 · Tel.: (+52)55-5082-1040 · FAX: (+52)5386-
1797 · www.leviton.com.mx

Visit our Website at: www.leviton.com

© 2018 Leviton Manufacturing Co., Inc. All Rights Reserved. Subject to change without notice.

Leviton has a global presence.

If you would like to know where your local Leviton office is located please go to:
www.leviton.com/international/contacts/

