



# LOTUS & WINDOWARE



2020 CATALOG OF WINDOW COVERINGS

[lotusblind.com](http://lotusblind.com)



IF YOU TAKE A  
FLOWER IN YOUR  
HAND AND REALLY  
LOOK AT IT, IT'S  
YOUR WORLD FOR  
A MOMENT

*-Georgia O'Keeffe*



The lotus is an Asian water lily known for its remarkable ability to thrive in a variety of environments. Opening at dawn and closing at dusk, different cultures have for centuries admired the direct relationship between the lotus and the sun. It is this same versatility and reverence that drives us today. Lotus & Windoware, Inc. was established in 1989 as an importer and wholesale distributor of quality window treatments in the United States. Lotus has since expanded its product selection offering the widest selection of stock sizes in the business.

Dedicated to providing you with the very best service available, Lotus maintains two distribution centers: our West Coast facility located in Chino, California and our East Coast facility in Memphis, Tennessee. This allows for quick delivery anywhere in the continental U.S. We can also service additional markets in Central and South America from our U.S. facilities and directly from our factories in Vietnam. Lotus excels in processing orders from a single carton to multiple containers and everything in between.

---

**At Lotus & Windoware, Inc., we are confident that you will  
find the window treatment solutions to meet your needs.**

---

#### CORPORATE OFFICE

14450 Yorba Avenue  
Chino, CA 91710  
TEL: 909-606-8866  
FAX: 909-606-8804

#### MEMPHIS

6225 Global Drive  
Suite 110  
Memphis, TN 38141  
TEL: 901-362-9093  
FAX: 901-362-9674

Lotus & Windoware products are compliant with consumer product safety standards. Please contact your customer service representative or visit the websites of the US Consumer Product Safety Commission and the Window Coverings Safety Council for more information.

[www.cpsc.gov](http://www.cpsc.gov)  
[www.windowcoverings.org](http://www.windowcoverings.org)

All Lotus & Windoware products have been tested and meet the United States CPSC total lead content for mini blinds and have passed the NFPA 701 Flame Test. Please feel free to contact your Lotus & Windoware representative to obtain a copy of these test results or download them from our website at [www.lotusblind.com](http://www.lotusblind.com).

All Lotus & Windoware products are manufactured in an ISO 9000 certified factory.

# CORDLESS

## WINDOW COVERINGS

<b>1" Vinyl Mini Blind</b>	<i>PAGE 1-2</i>
<b>1" Vinyl Plus Mini Blind</b>	<i>PAGE 3-4</i>
<b>1" Aluminum Mini Blind</b>	<i>PAGE 5-6</i>
<b>2" Vinyl Plus Blind</b>	<i>PAGE 7-8</i>
<b>2" Faux Wood Blind</b>	<i>PAGE 9-10</i>
<b>2" Embossed Faux Wood Blind</b>	<i>PAGE 11-12</i>
<b>2-1/2" Faux Wood Blind</b>	<i>PAGE 13-14</i>
<b>3-1/2" Economy Vertical Blind</b>	<i>PAGE 15</i>
<b>Economy Steel Vertical Headrails</b>	<i>PAGE 16</i>
<b>Options Aluminum Vertical Headrails</b>	<i>PAGE 17</i>
<b>3-1/2" Room-Darkening Vertical Vanes</b>	<i>PAGE 18</i>



PRODUCT CODE

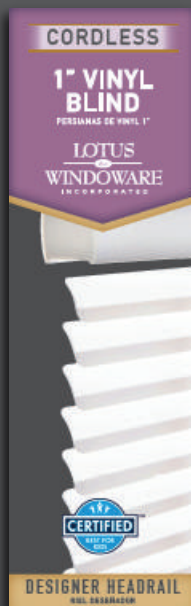
MLX

# 1" Vinyl Mini Blind

AVAILABLE IN WHITE AND ALABASTER



## Warehouse and Container



Most Complete Assortment  
of Stock Sizes Available

1" Wide Static Resistant,  
Fade Resistant PVC Slats

1-Year Warranty

Designer PVC Headrail

Hold Down Brackets  
Included With Every Blind

Child-Safe Cordless Design

*All widths are 1/2" less than  
stated size to allow for inside mounting*

### **OUR MOST COST-EFFICIENT WINDOW TREATMENT SOLUTION.**

The attractive 1" Vinyl Mini Blind sets the standard for simplicity and functionality. Just like the leaves of the lotus flower, the easy to clean vinyl material naturally repels dust, water and grime.

A new headrail design increases both durability and aesthetics, making valances a thing of the past. Both installation and operation are a breeze on this most budget-friendly cordless mini blind.

# SPECIFICATIONS

## » HEADRAIL

Extruded PVC headrail 1.75" width x 1.22" height x 0.06" thick.

## » HEADRAIL ENDCAPS

Injection molded plastic.

## » BOTTOMRAIL

Extruded hollow PVC bottomrail 1.18" width x 0.55" height x 0.057" thick.

## » BOTTOMRAIL ENDCAPS

Injection molded plastic.

## » WAND

Extruded PVC Hex shape. Color coordinated. diameter 0.3937"

## » SLAT

Extruded PVC .013" to .014" thick x 0.976" width with crown of 0.157."

## » TILT ROD

Plated steel, 0.138" diameter.

## » LADDER

Woven polyester ladder 0.86" spacing.

## » TILTER

Injection molded plastic housing.

## » BOTTOMRAIL ANCHORS

Injection molded plastic.

## » MOUNTING BRACKET

Plated steel, hidden.

## » TAPE ROLLER SUPPORT

Injection molded plastic with metal roller minimizing cord fray.

## » TAPE ROLLER

Injection molded plastic with ladder locking legs.

## » INTERNAL CORD

Woven polyester cord 0.035".

## » HOLD DOWN BRACKET

Injection molded plastic.

## » CUSTOMIZATION

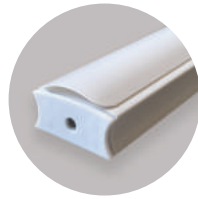
22" and below - 0" can be cut off width.  
Over 22" - up to 6" total. No more than 10" may be taken off the length to allow the blind to hold its position.



Designer Headrail



Tilter



Bottomrail of Extruded Hollow PVC

PRODUCT CODE **MLX**

<b>- 23 -</b>	23 x 42 <sup>W</sup>	50 x 48 <sup>W</sup>	47 x 54 <sup>A,W</sup>	47 x 60 <sup>A,W</sup>	34 x 64 <sup>A,W</sup>	<b>- 72 -</b>	45 x 72 <sup>W</sup>	29 x 84 <sup>W</sup>
22.5 x 23 <sup>W</sup>	24 x 42 <sup>W</sup>	51 x 48 <sup>W</sup>	52 x 54 <sup>W</sup>	48 x 60 <sup>A,W</sup>	34.5 x 64 <sup>A,W</sup>	11 x 72 <sup>W</sup>	46 x 72 <sup>W</sup>	30 x 84 <sup>A,W</sup>
	25 x 42 <sup>W</sup>	52 x 48 <sup>A,W</sup>	63 x 54 <sup>A,W</sup>	52 x 60 <sup>W</sup>	35 x 64 <sup>A,W</sup>	12 x 72 <sup>W</sup>	47 x 72 <sup>A,W</sup>	31 x 84 <sup>W</sup>
	29 x 42 <sup>W</sup>	54 x 48 <sup>W</sup>	72 x 54 <sup>A,W</sup>	54 x 60 <sup>A,W</sup>	36 x 64 <sup>A,W</sup>	13 x 72 <sup>W</sup>	48 x 72 <sup>A,W</sup>	32 x 84 <sup>W</sup>
	46 x 42 <sup>W</sup>	56 x 48 <sup>W</sup>		58 x 60 <sup>A,W</sup>	37 x 64 <sup>A,W</sup>	15 x 72 <sup>W</sup>	52 x 72 <sup>W</sup>	32.5 x 84 <sup>W</sup> <b>NEW</b>
<b>- 36 -</b>		57 x 48 <sup>W</sup>	<b>- 60 -</b>	58.5 x 60 <sup>W</sup>	38 x 64 <sup>A,W</sup>	16 x 72 <sup>W</sup>	54 x 72 <sup>A,W</sup>	33 x 84 <sup>A,W</sup>
17 x 36 <sup>W</sup>		58 x 48 <sup>A,W</sup>	17 x 60 <sup>W</sup>	59 x 60 <sup>W</sup>	39 x 64 <sup>A,W</sup>	17 x 72 <sup>W</sup>	58 x 72 <sup>A,W</sup>	34 x 84 <sup>A,W</sup>
19 x 36 <sup>W</sup> <b>NEW</b>	<b>- 48 -</b>	58.5 x 48 <sup>A,W</sup>	18 x 60 <sup>W</sup>	60 x 60 <sup>W</sup>	39 x 64 <sup>A,W</sup>	18 x 72 <sup>W</sup>	59 x 72 <sup>A,W</sup>	35 x 84 <sup>A,W</sup>
22 x 36 <sup>A,W</sup>	17 x 48 <sup>W</sup>	59 x 48 <sup>A,W</sup>	22 x 60 <sup>W</sup>	61 x 60 <sup>W</sup>	41 x 64 <sup>W</sup>	19 x 72 <sup>W</sup>	60 x 72 <sup>W</sup>	36 x 84 <sup>A,W</sup>
22.5 x 36 <sup>W</sup>	20 x 48 <sup>W</sup>	60 x 48 <sup>A,W</sup>	23 x 60 <sup>A,W</sup>	62 x 60 <sup>W</sup>	42 x 64 <sup>A,W</sup>	21 x 72 <sup>W</sup>	62 x 72 <sup>W</sup>	37 x 84 <sup>W</sup>
23 x 36 <sup>A,W</sup>	22 x 48 <sup>A,W</sup>	61 x 48 <sup>W</sup>	24 x 60 <sup>A,W</sup>	63 x 60 <sup>A,W</sup>	43 x 64 <sup>A,W</sup>	22 x 72 <sup>W</sup>	63 x 72 <sup>A,W</sup>	38 x 84 <sup>A,W</sup>
24 x 36 <sup>A,W</sup>	23 x 48 <sup>A,W</sup>	62 x 48 <sup>W</sup>	26 x 60 <sup>W</sup>	65 x 60 <sup>W</sup>	44 x 64 <sup>A,W</sup>	23 x 72 <sup>W</sup>	69 x 72 <sup>W</sup>	39 x 84 <sup>A,W</sup>
27 x 36 <sup>A,W</sup>	24 x 48 <sup>A,W</sup>	63 x 48 <sup>A,W</sup>	27 x 60 <sup>W</sup>	69 x 60 <sup>W</sup>	45 x 64 <sup>A,W</sup>	24 x 72 <sup>W</sup>	70 x 72 <sup>A,W</sup>	40 x 84 <sup>W</sup>
28 x 36 <sup>W</sup>	26 x 48 <sup>W</sup>	64 x 48 <sup>W</sup>	28 x 60 <sup>W</sup>	70 x 60 <sup>W</sup>	46 x 64 <sup>A,W</sup>	25 x 72 <sup>W</sup>	70.5 x 72 <sup>A,W</sup>	42 x 84 <sup>W</sup>
29 x 36 <sup>A,W</sup>	27 x 48 <sup>A,W</sup>	68 x 48 <sup>W</sup> <b>NEW</b>	28.5 x 60 <sup>A,W</sup>	70.5 x 60 <sup>A,W</sup>	47 x 64 <sup>A,W</sup>	26 x 72 <sup>W</sup>	71 x 72 <sup>A,W</sup>	43 x 84 <sup>W</sup> <b>NEW</b>
30 x 36 <sup>W</sup>	28 x 48 <sup>A,W</sup>	69 x 48 <sup>A,W</sup>	29 x 60 <sup>W</sup>	71 x 60 <sup>W</sup>	48 x 64 <sup>A,W</sup>	27 x 72 <sup>W</sup>	72 x 72 <sup>A,W</sup>	46 x 84 <sup>A,W</sup>
31 x 36 <sup>A,W</sup>	29 x 48 <sup>A,W</sup>	70 x 48 <sup>A,W</sup>	30 x 60 <sup>A,W</sup>	72 x 60 <sup>A,W</sup>	52 x 64 <sup>A,W</sup>	28 x 72 <sup>W</sup>	78 x 72 <sup>A,W</sup>	47 x 84 <sup>W</sup>
32 x 36 <sup>A,W</sup>	30 x 48 <sup>A,W</sup>	70.5 x 48 <sup>W</sup>	30.5 x 60 <sup>W</sup>	78 x 60 <sup>W</sup>	53 x 64 <sup>A,W</sup>	29 x 72 <sup>W</sup>		48 x 84 <sup>A,W</sup>
33 x 36 <sup>W</sup>	31 x 48 <sup>A,W</sup>	71 x 48 <sup>A,W</sup>	31 x 60 <sup>A,W</sup>		54 x 64 <sup>A,W</sup>	30 x 72 <sup>W</sup>	<b>- 78 -</b>	52 x 84 <sup>W</sup>
34 x 36 <sup>A,W</sup>	32 x 48 <sup>A,W</sup>	72 x 48 <sup>A,W</sup>	32 x 60 <sup>A,W</sup>	<b>- 64 -</b>	55 x 64 <sup>A,W</sup>	30.5 x 72 <sup>W</sup>	31 x 78 <sup>W</sup>	54 x 84 <sup>A,W</sup>
34.5 x 36 <sup>W</sup>	33 x 48 <sup>W</sup>		33 x 60 <sup>W</sup>	16 x 64 <sup>W</sup>	57 x 64 <sup>W</sup>	31 x 72 <sup>W</sup>	35 x 78 <sup>W</sup>	57 x 84 <sup>W</sup>
35 x 36 <sup>A,W</sup>	34 x 48 <sup>A,W</sup>	<b>- 54 -</b>	34 x 60 <sup>A,W</sup>	17 x 64 <sup>W</sup>	58 x 64 <sup>A,W</sup>	32 x 72 <sup>W</sup>	36 x 78 <sup>W</sup>	59 x 84 <sup>W</sup>
36 x 36 <sup>A,W</sup>	34.5 x 48 <sup>A,W</sup>	23 x 54 <sup>A,W</sup>	34.5 x 60 <sup>A,W</sup>	18 x 64 <sup>W</sup>	59 x 64 <sup>A,W</sup>	33 x 72 <sup>W</sup>	36 x 78 <sup>W</sup>	60 x 84 <sup>A,W</sup>
39 x 36 <sup>W</sup>	35 x 48 <sup>A,W</sup>	28 x 54 <sup>W</sup>	35 x 60 <sup>A,W</sup>	19 x 64 <sup>W</sup>	60 x 64 <sup>A,W</sup>	34 x 72 <sup>W</sup>	37 x 72 <sup>W</sup>	63 x 84 <sup>A,W</sup>
45 x 36 <sup>W</sup>	36 x 48 <sup>A,W</sup>	29 x 54 <sup>W</sup>	35.5 x 60 <sup>W</sup>	20 x 64 <sup>W</sup>	62 x 64 <sup>W</sup>	35 x 72 <sup>W</sup>	38 x 72 <sup>W</sup>	72 x 84 <sup>A,W</sup>
46 x 36 <sup>A,W</sup>	38 x 48 <sup>W</sup>	30 x 54 <sup>W</sup>	36 x 60 <sup>A,W</sup>	22 x 64 <sup>A,W</sup>	63 x 64 <sup>A,W</sup>	36 x 72 <sup>W</sup>		
47 x 36 <sup>A,W</sup>	39 x 48 <sup>A,W</sup>	31 x 54 <sup>A,W</sup>	37 x 60 <sup>W</sup>	23 x 64 <sup>A,W</sup>	64 x 64 <sup>A,W</sup>	37 x 72 <sup>W</sup>	<b>- 84 -</b>	
48 x 36 <sup>A,W</sup>	40 x 48 <sup>A,W</sup>	32 x 54 <sup>W</sup>	38 x 60 <sup>A,W</sup>	24 x 64 <sup>A,W</sup>	68 x 64 <sup>W</sup>	38 x 72 <sup>W</sup>	12 x 84 <sup>W</sup>	<b>- 96 -</b>
59 x 36 <sup>A,W</sup>	41 x 48 <sup>W</sup>	34 x 54 <sup>W</sup>	38.5 x 60 <sup>W</sup>	25 x 64 <sup>A,W</sup>	69 x 64 <sup>A,W</sup>	39 x 72 <sup>W</sup>	14 x 84 <sup>W</sup>	33.5 x 96 <sup>W</sup> <b>NEW</b>
60 x 36 <sup>W</sup>	42 x 48 <sup>W</sup>	34.5 x 54 <sup>W</sup>	39 x 60 <sup>A,W</sup>	26 x 64 <sup>W</sup>	70 x 64 <sup>A,W</sup>	40 x 72 <sup>W</sup>	16.5 x 84 <sup>A,W</sup>	34 x 96 <sup>W</sup>
69 x 36 <sup>W</sup>	43 x 48 <sup>A,W</sup>	35 x 54 <sup>A,W</sup>	40 x 60 <sup>A,W</sup>	27 x 64 <sup>A,W</sup>	71 x 64 <sup>A,W</sup>	41 x 72 <sup>W</sup>	17 x 84 <sup>W</sup>	35 x 96 <sup>A,W</sup>
70 x 36 <sup>W</sup>	44 x 48 <sup>A,W</sup>	36 x 54 <sup>W</sup>	41 x 60 <sup>A,W</sup>	28 x 64 <sup>A,W</sup>	72 x 64 <sup>A,W</sup>	42 x 72 <sup>W</sup>	18 x 84 <sup>W</sup>	36 x 96 <sup>W</sup>
71 x 36 <sup>A,W</sup>	45 x 48 <sup>A,W</sup>	38 x 54 <sup>W</sup>	42 x 60 <sup>W</sup>	29 x 64 <sup>A,W</sup>		43 x 72 <sup>W</sup>	21 x 84 <sup>W</sup>	39 x 96 <sup>W</sup>
72 x 36 <sup>A,W</sup>	46 x 48 <sup>A,W</sup>	39 x 54 <sup>A,W</sup>	43 x 60 <sup>A,W</sup>	30 x 64 <sup>A,W</sup>	<b>- 68 -</b>	44 x 72 <sup>W</sup>	23 x 84 <sup>A,W</sup>	43 x 96 <sup>W</sup>
	46.5 x 48 <sup>A,W</sup>	40 x 54 <sup>W</sup>	45 x 60 <sup>W</sup>	31 x 64 <sup>A,W</sup>	24 x 68 <sup>W</sup>		24 x 84 <sup>A,W</sup>	
<b>- 42 -</b>	47 x 48 <sup>A,W</sup>	42 x 54 <sup>W</sup>	46 x 60 <sup>A,W</sup>	32 x 64 <sup>A,W</sup>	25 x 68 <sup>A,W</sup>		25 x 84 <sup>A,W</sup>	
18 x 42 <sup>W</sup>	48 x 48 <sup>A,W</sup>	43 x 54 <sup>A,W</sup>	46.5 x 60 <sup>A,W</sup>	33 x 64 <sup>A,W</sup>			27 x 84 <sup>W</sup>	
							28 x 84 <sup>W</sup>	

**PACKAGING** Up to 47.5" wide: 6 per carton | 48" and wider: 4 per carton

A = Available in Alabaster | W = Available in White | A,W = Available in Alabaster and White

PRODUCT CODE

RLX

# 1" Vinyl Plus Mini Blind

AVAILABLE IN WHITE AND ALABASTER



## Warehouse and Container



Most Complete Assortment of Stock Sizes Available

1" Room-Darkening PVC Slats with Static and Fade-Resistant Formulation

1-Year Warranty

Designer Steel Headrail

Hold Down Brackets Included With Every Blind

Child-Safe Cordless Design

*All widths are 1/2" less than stated size to allow for inside mounting*

### THE REINFORCED 1" VINYL PLUS MINI BLIND

has all the same great features of our regular 1" Vinyl Mini Blind further enhanced with steel head and bottomrails and premium room darkening, warp resistant PVC slats.

Designed for durability, the 1" Vinyl Plus Mini Blind withstands heavy-duty use without compromising design. And the new attractive headrail increases that strength, even making the need for valances a thing of the past.

# SPECIFICATIONS

## » HEADRAIL

Roll formed steel headrail 1.52" width x 1.06" height x 0.016" thick.

## » HEADRAIL ENDCAPS

Injection molded plastic.

## » BOTTOMRAIL

Roll formed steel bottomrail 1.10" width x 0.59" height x 0.016" thick.

## » BOTTOMRAIL ENDCAPS

Injection molded plastic.

## » WAND

Extruded PVC Hex shape, Color coordinated, diameter 0.36"

## » SLAT

Extruded PVC .013" to .014" thick x 0.967" width with crown of 0.157."

## » TILT ROD

Plated steel, 0.137 diameter.

## » TILTER

Injection molded plastic housing.

## » LADDER

Woven polyester ladder 0.86" spacing.

## » BOTTOMRAIL ANCHORS

Injection molded plastic.

## » HOLD DOWN BRACKET

Injection molded plastic.

## » MOUNTING BRACKET

Plated steel, hidden.

## » CUSTOMIZATION

22" and below - 0" can be cut off width.  
Over 22" - up to 6" total. No more than 10" may be taken off the length to allow the blind to hold its position.



Designer Steel Headrail



Tilter



Bottomrail of Roll Formed Metal

PRODUCT CODE **RLX**

<b>- 36 -</b>	46 x 48 <sup>A,W</sup>	30 x 60 <sup>A,W</sup>	<b>- 64 -</b>	<b>- 72 -</b>	65 x 72 <sup>A,W</sup>	<b>- 96 -</b>
22 x 36 <sup>W</sup>	46.5 x 48 <sup>A,W</sup>	31 x 60 <sup>A,W</sup>	23 x 64 <sup>A,W</sup>	11 x 72 <sup>W</sup>	70 x 72 <sup>A,W</sup>	23 x 96 <sup>A,W</sup>
23 x 36 <sup>A,W</sup>	47 x 48 <sup>A,W</sup>	32 x 60 <sup>A,W</sup>	27 x 64 <sup>W</sup>	18 x 72 <sup>W</sup>	70.5 x 72 <sup>A,W</sup>	27 x 96 <sup>A,W</sup>
27 x 36 <sup>W</sup>	48 x 48 <sup>A,W</sup>	34 x 60 <sup>A,W</sup>	28 x 64 <sup>A,W</sup>	19 x 72 <sup>W</sup>	71 x 72 <sup>A,W</sup>	31 x 96 <sup>A,W</sup>
30 x 36 <sup>W</sup>	58 x 48 <sup>A,W</sup>	34.5 x 60 <sup>A,W</sup>	29 x 64 <sup>W</sup>	22 x 72 <sup>W</sup>	72 x 72 <sup>A,W</sup>	35 x 96 <sup>A,W</sup>
34 x 36 <sup>W</sup>	58.5 x 48 <sup>A,W</sup>	35 x 60 <sup>A,W</sup>	30 x 64 <sup>W</sup>	23 x 72 <sup>A,W</sup>	75 x 72 <sup>A,W</sup>	36 x 96 <sup>A,W</sup>
34.5 x 36 <sup>A,W</sup>	59 x 48 <sup>A,W</sup>	35.5 x 60 <sup>A,W</sup>	31 x 64 <sup>A,W</sup>	24 x 72 <sup>W</sup>	82.5 x 72 <sup>A,W</sup>	39 x 96 <sup>A,W</sup>
35 x 36 <sup>A,W</sup>	60 x 48 <sup>W</sup>	36 x 60 <sup>A,W</sup>	32 x 64 <sup>W</sup>	24.5 x 72 <sup>A,W</sup>	83 x 72 <sup>A,W</sup>	43 x 96 <sup>A,W</sup>
36 x 36 <sup>W</sup>	70 x 48 <sup>A,W</sup>	37 x 60 <sup>A,W</sup>	33 x 64 <sup>A,W</sup>	25 x 72 <sup>W</sup>	89 x 72 <sup>A,W</sup>	48 x 96 <sup>A,W</sup>
47 x 36 <sup>W</sup>	70.5 x 48 <sup>A,W</sup>	38 x 60 <sup>W</sup>	33.5 x 64 <sup>W</sup>	26 x 72 <sup>W</sup>	93 x 72 <sup>W</sup>	72 x 96 <sup>W</sup>
48 x 36 <sup>W</sup>	71 x 48 <sup>A,W</sup>	39 x 60 <sup>A,W</sup>	34 x 64 <sup>A,W</sup>	27 x 72 <sup>W</sup>	95 x 72 <sup>A,W</sup>	
58.5 x 36 <sup>A,W</sup>	72 x 48 <sup>A,W</sup>	40 x 60 <sup>A,W</sup>	34.5 x 64 <sup>A,W</sup>	27 x 72 <sup>W</sup>	100 x 72 <sup>W</sup>	
59 x 36 <sup>A,W</sup>	80 x 48 <sup>W</sup>	40.5 x 60 <sup>A,W</sup>	35 x 64 <sup>A,W</sup>	28 x 72 <sup>A,W</sup>	105 x 72 <sup>W</sup>	
70 x 36 <sup>W</sup>	82.5 x 48 <sup>A,W</sup>	42 x 60 <sup>W</sup>	36 x 64 <sup>W</sup>	28.5 x 72 <sup>W</sup>		
70.5 x 36 <sup>A,W</sup>	83 x 48 <sup>A,W</sup>	43 x 60 <sup>A,W</sup>	38 x 64 <sup>W</sup>	29 x 72 <sup>A,W</sup>	<b>- 84 -</b>	
71 x 36 <sup>A,W</sup>	84 x 48 <sup>W</sup>	46 x 60 <sup>A,W</sup>	39 x 64 <sup>W</sup>	30 x 72 <sup>A,W</sup>	16.5 x 84 <sup>W</sup>	
	94.5 x 48 <sup>A,W</sup>	46.5 x 60 <sup>A,W</sup>	41 x 64 <sup>W</sup>	30.5 x 72 <sup>W</sup>	23 x 84 <sup>A,W</sup>	
	95 x 48 <sup>W</sup>	47 x 60 <sup>A,W</sup>	43 x 64 <sup>W</sup>	31 x 72 <sup>A,W</sup>	24 x 84 <sup>A,W</sup>	
	96 x 48 <sup>W</sup>	52 x 60 <sup>A,W</sup>	46 x 64 <sup>A,W</sup>	32 x 72 <sup>A,W</sup>	27 x 84 <sup>W</sup>	
<b>- 42 -</b>		54 x 60 <sup>A,W</sup>	47 x 64 <sup>W</sup>	34 x 72 <sup>A,W</sup>	28 x 84 <sup>A,W</sup>	
25 x 42 <sup>W</sup>	<b>- 54 -</b>	57 x 60 <sup>A,W</sup>	48 x 64 <sup>A,W</sup>	34.5 x 72 <sup>A,W</sup>	28 x 84 <sup>A,W</sup>	
58.5 x 42 <sup>A,W</sup>	30 x 54 <sup>W</sup>	58 x 60 <sup>A,W</sup>	52 x 64 <sup>W</sup> <b>NEW</b>	35 x 72 <sup>A,W</sup>	29 x 84 <sup>W</sup>	
70.5 x 42 <sup>A,W</sup>	31 x 54 <sup>A,W</sup>	58.5 x 60 <sup>A,W</sup>	58 x 64 <sup>A,W</sup>	36 x 72 <sup>A,W</sup>	31 x 84 <sup>A,W</sup>	
	32 x 54 <sup>W</sup>	59 x 60 <sup>A,W</sup>	70 x 64 <sup>W</sup>	38 x 72 <sup>A,W</sup>	34 x 84 <sup>A,W</sup>	
<b>- 48 -</b>	34 x 54 <sup>W</sup>	62 x 60 <sup>A,W</sup>	71 x 64 <sup>A,W</sup>	38 x 72 <sup>A,W</sup>	34.5 x 84 <sup>W</sup>	
23 x 48 <sup>A,W</sup>	35 x 54 <sup>W</sup>	63 x 60 <sup>A,W</sup>	72 x 64 <sup>W</sup>	39 x 72 <sup>A,W</sup>	35 x 84 <sup>A,W</sup>	
25 x 48 <sup>W</sup>	39 x 54 <sup>W</sup>	70 x 60 <sup>A,W</sup>	90 x 64 <sup>A,W</sup>	40 x 72 <sup>A,W</sup>	39 x 84 <sup>A,W</sup>	
27 x 48 <sup>A,W</sup>	40 x 54 <sup>W</sup>	71 x 60 <sup>A,W</sup>		42 x 72 <sup>W</sup>	40.5 x 84 <sup>W</sup>	
29 x 48 <sup>A,W</sup>	63 x 54 <sup>W</sup>	72 x 60 <sup>W</sup>	<b>- 68 -</b>	43 x 72 <sup>A,W</sup>	43 x 84 <sup>A,W</sup>	
30 x 48 <sup>A,W</sup>		80 x 60 <sup>W</sup>	24 x 68 <sup>W</sup>	46 x 72 <sup>W</sup>	47 x 84 <sup>A,W</sup>	
31 x 48 <sup>A,W</sup>	<b>- 60 -</b>	82.5 x 60 <sup>A,W</sup>	24.5 x 68 <sup>A,W</sup>	46.5 x 72 <sup>A,W</sup>	48 x 84 <sup>A,W</sup>	
34 x 48 <sup>A,W</sup>	23 x 60 <sup>A,W</sup>	85 x 60 <sup>W</sup>	25 x 68 <sup>W</sup>	47 x 72 <sup>W</sup>	54 x 84 <sup>A,W</sup>	
34.5 x 48 <sup>A,W</sup>	27 x 60 <sup>W</sup>	87 x 60 <sup>A,W</sup>		48 x 72 <sup>W</sup>	60 x 84 <sup>W</sup>	
35 x 48 <sup>A,W</sup>	28 x 60 <sup>A,W</sup>	94.5 x 60 <sup>W</sup>		58 x 72 <sup>A,W</sup>	70.5 x 84 <sup>W</sup>	
39 x 48 <sup>W</sup>	28.5 x 60 <sup>A,W</sup>	95 x 60 <sup>A,W</sup>		59 x 72 <sup>A,W</sup>		
45 x 48 <sup>A,W</sup>	29 x 60 <sup>A,W</sup>			62 x 72 <sup>W</sup>		
				63 x 72 <sup>A,W</sup>		

**PACKAGING** Up to 47.5" wide: 6 per carton | 48" and wider: 4 per carton

A = Available in Alabaster | W = Available in White | A,W = Available in Alabaster and White

PRODUCT CODE

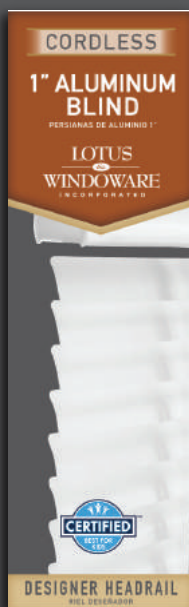
AMX

# 1" Aluminum Mini Blind

AVAILABLE IN WHITE AND ALABASTER



## Warehouse and Container



Most Complete Assortment  
of Stock Sizes Available

1" Wide 6 Gauge Crease  
Resistant, Static Resistant  
Aluminum Slat

1-Year Warranty

Metal Headrail & Bottomrail

Hold Down Brackets Included  
With Every Blind

Child-Safe Cordless Design

*All widths are 1/2" less than  
stated size to allow for inside mounting*

**THE STALK OF THE LOTUS FLOWER IS EASILY BENT BUT EXTREMELY DIFFICULT TO BREAK DUE TO ITS INCREDIBLY STRONG FIBERS.** Our 1" Aluminum Mini Blind is engineered using static and crease resistant aluminum slats, designed to spring back if pulled out of shape. Steel head and bottomrails provide maximum support.

Now with a sleek, modern headrail, there's no longer any need for valances, making our 1" Aluminum Mini Blind even more durable and simple to install.

# SPECIFICATIONS

## » HEADRAIL

Roll formed steel headrail 1.52" width x 1.06" height x 0.016" thick.

## » HEADRAIL ENDCAPS

Injection molded plastic.

## » BOTTOMRAIL

Roll formed steel bottomrail 1.10" width x 0.59" height x 0.016" thick.

## » BOTTOMRAIL ENDCAPS

Injection molded plastic.

## » WAND

Extruded clear acrylic Hex shape, 0.29" across flats.

## » SLAT

Painted aluminum 0.006" thickness after coating x 0.97" width with crown of 0.079."

## » TAPE ROLLER SUPPORT

Injection molded plastic with metal roller minimizing cord tray.

## » TAPE ROLLER

Injection molded plastic with ladder locking legs.

## » TILT ROD

Plated steel, 0.137 diameter.

## » TILTER

Injection molded plastic housing.

## » LADDER

Woven polyester ladder 0.86" spacing.

## » BOTTOMRAIL ANCHORS

Injection molded plastic.

## » HOLD DOWN BRACKET

Injection molded plastic.

## » MOUNTING BRACKET

Plated steel, hidden.

## » CUSTOMIZATION

22" and below - 0" can be cut off width.  
Over 22" - up to 6" total. No more than 10" may be taken off the length to allow the blind to hold its position.



Designer Steel Headrail



Tilter



Bottomrail of Roll Formed Metal

PRODUCT CODE

# AMX

<b>- 36 -</b>	47 x 48 <sup>A,W</sup>	36 x 60 <sup>A,W</sup>	35 x 64 <sup>W</sup>	39 x 72 <sup>A,W</sup>	60 x 84 <sup>W</sup>
22 x 36 <sup>A,W</sup>	48 x 48 <sup>A,W</sup>	38 x 60 <sup>A,W</sup>	36 x 64 <sup>W</sup>	41 x 72 <sup>W</sup>	70.5 x 84 <sup>W</sup>
23 x 36 <sup>A,W</sup>	52 x 48 <sup>W</sup>	39 x 60 <sup>A,W</sup>	36.5 x 64 <sup>W</sup>	42 x 72 <sup>A,W</sup>	71 x 84 <sup>A,W</sup>
29 x 36 <sup>W</sup>	58 x 48 <sup>A,W</sup>	40 x 60 <sup>A,W</sup>	37 x 64 <sup>W</sup>	43 x 72 <sup>A,W</sup>	
34 x 36 <sup>A,W</sup>	58.5 x 48 <sup>A,W</sup>	41 x 60 <sup>A,W</sup>	47 x 64 <sup>A,W</sup>	46 x 72 <sup>A,W</sup>	
34.5 x 36 <sup>A,W</sup>	59 x 48 <sup>A,W</sup>	42 x 60 <sup>W</sup>	52 x 64 <sup>A,W</sup>	46.5 x 72 <sup>A,W</sup>	
35 x 36 <sup>A,W</sup>	70 x 48 <sup>A,W</sup>	43 x 60 <sup>A,W</sup>	70 x 64 <sup>W</sup>	47 x 72 <sup>A,W</sup>	
36 x 36 <sup>A,W</sup>	70.5 x 48 <sup>A,W</sup>	45 x 60 <sup>W</sup>	71 x 64 <sup>W</sup>	48 x 72 <sup>A,W</sup>	
46 x 36 <sup>A,W</sup>	71 x 48 <sup>A,W</sup>	46 x 60 <sup>A,W</sup>		54 x 72 <sup>A,W</sup>	
46.5 x 36 <sup>A,W</sup>	72 x 48 <sup>A,W</sup>	46.5 x 60 <sup>A,W</sup>	<b>- 68 -</b>	58 x 72 <sup>A,W</sup>	
47 x 36 <sup>A,W</sup>	83 x 48 <sup>W</sup>	47 x 60 <sup>A,W</sup>	25 x 68 <sup>A,W</sup>	59 x 72 <sup>A,W</sup>	
48 x 36 <sup>A,W</sup>	94.5 x 48 <sup>A,W</sup>	48 x 60 <sup>A,W</sup>		62 x 72 <sup>W</sup>	
58.5 x 36 <sup>A,W</sup>	95 x 48 <sup>W</sup>	54 x 60 <sup>A,W</sup>	<b>- 72 -</b>	63 x 72 <sup>A,W</sup>	
70.5 x 36 <sup>A,W</sup>	96 x 48 <sup>W</sup>	58 x 60 <sup>A,W</sup>	11 x 72 <sup>W</sup>	69 x 72 <sup>A,W</sup>	
71 x 36 <sup>A,W</sup>		58.5 x 60 <sup>A,W</sup>	14 x 72 <sup>W</sup>	69.5 x 72 <sup>A,W</sup>	
	<b>- 54 -</b>	59 x 60 <sup>A,W</sup>	18 x 72 <sup>A,W</sup>	70 x 72 <sup>A,W</sup>	
	35 x 54 <sup>W</sup>	62 x 60 <sup>W</sup>	19 x 72 <sup>A,W</sup>	70.5 x 72 <sup>A,W</sup>	
	36 x 54 <sup>W</sup>	63 x 60 <sup>A,W</sup>	22 x 72 <sup>A,W</sup>	71 x 72 <sup>A,W</sup>	
<b>- 42 -</b>	43 x 54 <sup>W</sup>	69 x 60 <sup>W</sup>	23 x 72 <sup>A,W</sup>	72 x 72 <sup>A,W</sup>	
25 x 42 <sup>W</sup>	51 x 54 <sup>A,W</sup>	70 x 60 <sup>A,W</sup>	24 x 72 <sup>A,W</sup>	75 x 72 <sup>A,W</sup>	
58.5 x 42 <sup>A,W</sup>		70.5 x 60 <sup>A,W</sup>	24.5 x 72 <sup>A,W</sup>	83 x 72 <sup>A,W</sup>	
70.5 x 42 <sup>A,W</sup>		71 x 60 <sup>A,W</sup>	25 x 72 <sup>A,W</sup>	89 x 72 <sup>A,W</sup>	
	<b>- 60 -</b>	72 x 60 <sup>A,W</sup>	26 x 72 <sup>A,W</sup>	95 x 72 <sup>A,W</sup>	
	17 x 60 <sup>A,W</sup>	78 x 60 <sup>W</sup>	27 x 72 <sup>A,W</sup>	96 x 72 <sup>A,W</sup>	
<b>- 48 -</b>	22 x 60 <sup>A,W</sup>	82.5 x 60 <sup>A,W</sup>	28 x 72 <sup>A,W</sup>	100 x 72 <sup>A,W</sup>	
22.5 x 48 <sup>A,W</sup>	22.5 x 60 <sup>A,W</sup>	94.5 x 60 <sup>A,W</sup>	28.5 x 72 <sup>A,W</sup>	107 x 72 <sup>A,W</sup>	
23 x 48 <sup>A,W</sup>	23 x 60 <sup>A,W</sup>	95 x 60 <sup>A,W</sup>	29 x 72 <sup>A,W</sup>		
29 x 48 <sup>W</sup>	27 x 60 <sup>A,W</sup>	107 x 60 <sup>W</sup>	30 x 72 <sup>A,W</sup>	<b>- 84 -</b>	
30 x 48 <sup>A,W</sup>	28 x 60 <sup>A,W</sup>		30.5 x 72 <sup>A,W</sup>	18 x 84 <sup>A,W</sup>	
31 x 48 <sup>A,W</sup>	29 x 60 <sup>A,W</sup>	<b>- 64 -</b>	31 x 72 <sup>A,W</sup>	23 x 84 <sup>A,W</sup>	
34 x 48 <sup>A,W</sup>	30 x 60 <sup>A,W</sup>	29 x 64 <sup>W</sup>	32 x 72 <sup>W</sup>	25 x 84 <sup>A,W</sup>	
34.5 x 48 <sup>A,W</sup>	30.5 x 60 <sup>A,W</sup>	30 x 64 <sup>W</sup>	34 x 72 <sup>A,W</sup>	27 x 84 <sup>W</sup>	
35 x 48 <sup>A,W</sup>	31 x 60 <sup>A,W</sup> <b>NEW</b>	31 x 64 <sup>W</sup>	34.5 x 72 <sup>A,W</sup>	29 x 84 <sup>A,W</sup>	
36 x 48 <sup>A,W</sup>	33 x 60 <sup>W</sup>	32 x 64 <sup>W</sup>	35 x 72 <sup>A,W</sup>	36 x 84 <sup>A,W</sup>	
39 x 48 <sup>A,W</sup>	34 x 60 <sup>A,W</sup>	33 x 64 <sup>W</sup> <b>NEW</b>	36 x 72 <sup>A,W</sup>	42 x 84 <sup>A,W</sup>	
45 x 48 <sup>A,W</sup>	34.5 x 60 <sup>A,W</sup>	34 x 64 <sup>A,W</sup>	38 x 72 <sup>A,W</sup>	47 x 84 <sup>A,W</sup>	
46 x 48 <sup>A,W</sup>	35 x 60 <sup>A,W</sup>	34.5 x 64 <sup>W</sup>		59 x 84 <sup>W</sup>	
46.5 x 48 <sup>A,W</sup>	35.5 x 60 <sup>A,W</sup>				

**PACKAGING** Up to 47.5" wide: 6 per carton | 48" and wider: 4 per carton

A = Available in Alabaster | W = Available in White | A,W = Available in Alabaster and White

PRODUCT CODE

RTX

# 2" Vinyl Plus Blind

AVAILABLE IN WHITE



Warehouse and Container



Contemporary 2" Designer Look

1-Year Warranty

Sturdy Steel Headrail

Matching Valance

Child-Safe Cordless Design

*All widths are 1/2" less than stated size to allow for inside mounting*

**THE LOTUS & WINDOWARE 2" VINYL PLUS BLIND IS THE CHOICE FOR CONTRACTORS ON A LIMITED BUDGET WHO WANT AN ATTRACTIVE, DESIGNER LOOK.**

Our 2" Vinyl Plus Blind is made with a durable metal headrail and comes with a 2" valance.

The static-resistant slats of the 2" Vinyl Plus Blind won't warp or crack. The durable design paired with room-darkening slats make these a great choice for any sunny spot!

# SPECIFICATIONS

## » HEADRAIL

Painted roll formed high profile steel headrail 2.28" width x 1.55" height x 0.0157" thick.

## » HEADRAIL ENDCAPS

Steel box bracket.

## » BOTTOMRAIL

Hollow extruded PVC bottomrail 2.05" width x 0.866" height x 0.075" thick.

## » BOTTOMRAIL ENDCAPS

Injection molded plastic.

## » WAND

Extruded PVC round shap. 0.394" diameter.

## » SLAT

Extruded PVC .021" thick x 1.97" width.

## » TAPE ROLLER SUPPORT

Injection molded plastic with metal roller minimizing cord tray.

## » TAPE ROLLER

Injection molded plastic with ladder locking legs.

## » TILT ROD

Plated steel. 0.25 diameter."

## » TILTER

Injection molded plastic clear housing.

## » LADDER

Woven polyester ladder 2.126" spacing.

## » MOUNTING BRACKET

Painted steel with hinged locking front cover.



Headrail



Tilter



Bottomrail of Extruded PVC



PRODUCT CODE **RTX**

### - 36 -

23 x 36  
34.5 x 36

### - 60 -

22 x 60  
23 x 60  
28 x 60  
29 x 60

### - 64 -

34 x 64  
35 x 64

### - 72 -

11 x 72  
23 x 72  
24 x 72  
24.5 x 72  
25 x 72  
26 x 72  
27 x 72  
28 x 72  
29 x 72  
30 x 72  
31 x 72  
34 x 72  
34.5 x 72  
35 x 72  
36 x 72  
42 x 72  
43 x 72  
46 x 72  
47 x 72  
48 x 72  
52 x 72  
58 x 72  
61 x 72  
62 x 72  
63 x 72  
70 x 72  
70.5 x 72  
71 x 72  
72 x 72

### - 84 -

23 x 84  
27 x 84  
31 x 84  
35 x 84  
39 x 84  
43 x 84  
48 x 84  
54 x 84  
60 x 84  
72 x 84

### - 48 -

23 x 48  
29 x 48  
35 x 48  
46 x 48  
46.5 x 48  
47 x 48  
58 x 48  
59 x 48  
70 x 48  
71 x 48

### - 68 -

23 x 68  
24 x 68  
25 x 68

30 x 60  
30.5 x 60  
31 x 60  
34 x 60  
34.5 x 60  
35 x 60  
36 x 60  
38 x 60  
39 x 60  
42.5 x 60  
46 x 60  
46.5 x 60  
47 x 60  
48 x 60  
58 x 60  
58.5 x 60  
59 x 60  
70 x 60  
70.5 x 60  
71 x 60  
72 x 60  
82 x 60

**PACKAGING** Up to 36.5" wide: 4 per carton. | 37" to 47.5" wide: 3 per carton. | 48" or wider: 2 per carton.

Available in White

# 2" Faux Wood Blind

ALL SIZES AVAILABLE IN WHITE  
LARGE SELECTION IN ALABASTER



## Warehouse and Container



Most Complete Assortment of Stock Sizes Available

2" Wide Slats for Designer Look

1-Year Warranty

3-1/4" Crown Valance

Heavy Duty Metal, High Profile Headrail

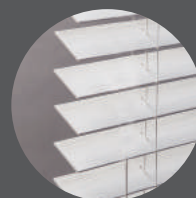
Static Resistant Slats Won't Warp or Crack

Child-Safe Cordless Design

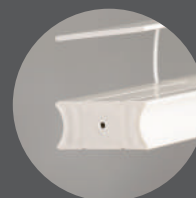
*All widths are 1/2" less than stated size to allow for inside mounting*



Crown Valance with High Profile Headrail



Slat - Flat PVC Foam



Bottomrail - Hollow Extruded PVC

### THE BEAUTIFUL LOTUS & WINDOWARE 2" FAUX WOOD BLIND OFFERS THE WARM LOOK OF WOOD AT AN AFFORDABLE PRICE.

The 2" Faux Wood Blind is engineered using a unique steel headrail with new memory flexibility technology making it more durable. The specially engineered hollow bottomrail makes operation smooth and holds slats in perfect alignment.

Our 2" Faux Wood Blind is made of a static and fade resistant synthetic material that won't crack, split or warp. The 2" Faux Wood Blinds are easy to clean so they are great for kids' rooms. The elegance, low maintenance and affordability of our 2" Faux Wood Blind makes it the perfect compliment to any window.

# SPECIFICATIONS

## » HEADRAIL

Painted roll formed high profile steel headrail 2.25" width x 2.01" height x 0.02" thick.

## » HEADRAIL ENDCAPS

Injection molded PVC.

## » BOTTOMRAIL

Hollow extruded PVC bottomrail 2.05" width x 0.866" height x 0.075" thick.

## » BOTTOMRAIL ENDCAPS

Injection molded plastic.

## » WAND

Extruded PVC round shap. 0.394" diameter.

## » SLAT

Plain finish Faux wood 0.11" thick x 1.969" width.

## » VALANCE

Plain finish Faux wood crown valance 0.177" thick x 3.25" width.

## » TAPE ROLLER SUPPORT

Injection molded plastic with metal roller minimizing cord tray.

## » TAPE ROLLER

Injection molded plastic with ladder locking legs.

## » TILT ROD

Plated steel, diameter 0.244".

## » TILTER

Injection molded plastic clear housing.

## » LADDER

Woven polyester ladder 2.126" spacing.

## » BOTTOMRAIL ANCHORS

Injection molded plastic.

## » CENTER SUPPORT

Painted steel.

## » MOUNTING BRACKET

Painted steel with hinged locking front cover.

## » HOLD DOWN BRACKET

Plated steel.

## CROWN VALANCES

Available in White and Alabaster

### Miter-Cut PRODUCT CODE CV-M

26 36 72

### Straight-Cut PRODUCT CODE CV-S

35 70 95 120  
63 71 108

## CROWN VALANCE RETURN SETS

Available in White and Alabaster PRODUCT CODE

5/8" 1-5/8" 2-1/2" CVR-M (Mitered)  
CVR-S (Straight - uses CVCorner clip)

PRODUCT CODE

# FCX

<b>- 24 -</b>	58.5 x 42 <sup>W</sup> 70.5 x 42 <sup>W</sup>	70 x 48 <sup>W</sup> 70.5 x 48 <sup>W</sup>	27 x 60 <sup>A,W</sup> 28 x 60 <sup>W</sup>	58.5 x 60 <sup>A,W</sup> 59 x 60 <sup>W</sup>	33 x 64 <sup>W</sup> 33.5 x 64 <sup>W</sup>	19 x 72 <sup>W</sup> 22 x 72 <sup>A,W</sup>	43 x 72 <sup>A,W</sup> 45 x 72 <sup>W</sup>	14 x 84 <sup>W</sup> 16.5 x 84 <sup>W</sup>
22.5 x 24 <sup>W</sup> <b>NEW</b>		71 x 48 <sup>A,W</sup>	28.5 x 60 <sup>A,W</sup>	59.5 x 60 <sup>W</sup>	34 x 64 <sup>W</sup>	22.5 x 72 <sup>W</sup>	46 x 72 <sup>W</sup>	23 x 84 <sup>W</sup>
23 x 24 <sup>W</sup> <b>NEW</b>	<b>- 48 -</b>	72 x 48 <sup>W</sup>	29 x 60 <sup>A,W</sup>	60 x 60 <sup>W</sup>	34.5 x 64 <sup>W</sup>	23 x 72 <sup>A,W</sup>	46.5 x 72 <sup>A,W</sup>	24 x 84 <sup>W</sup> <b>NEW</b>
35 x 24 <sup>W</sup> <b>NEW</b>	18 x 48 <sup>W</sup>	95 x 48 <sup>W</sup>	29.5 x 60 <sup>W</sup>	61 x 60 <sup>W</sup>	35 x 64 <sup>A,W</sup>	23.5 x 72 <sup>W</sup>	47 x 72 <sup>A,W</sup>	25 x 84 <sup>A,W</sup>
	22 x 48 <sup>W</sup>		30 x 60 <sup>W</sup>	62 x 60 <sup>W</sup>	36 x 64 <sup>W</sup>	24 x 72 <sup>A,W</sup>	48 x 72 <sup>A,W</sup>	27 x 84 <sup>A,W</sup>
	22.5 x 48 <sup>W</sup>		30.5 x 60 <sup>W</sup>	62.5 x 60 <sup>W</sup>	37 x 64 <sup>W</sup>	24.5 x 72 <sup>A,W</sup>	52.5 x 72 <sup>W</sup>	29 x 84 <sup>A,W</sup>
<b>- 36 -</b>	23 x 48 <sup>A,W</sup>		31 x 60 <sup>A,W</sup>	63 x 60 <sup>A,W</sup>	38 x 64 <sup>W</sup>	25 x 72 <sup>A,W</sup>	54 x 72 <sup>A,W</sup>	30 x 84 <sup>W</sup>
22 x 36 <sup>A,W</sup>	26 x 48 <sup>W</sup> <b>NEW</b>	<b>- 50 -</b>	31.5 x 60 <sup>W</sup>	67 x 60 <sup>W</sup> <b>NEW</b>	39 x 64 <sup>W</sup>	25.5 x 72 <sup>W</sup>	54.5 x 72 <sup>W</sup>	31 x 84 <sup>A,W</sup>
22.5 x 36 <sup>W</sup>	27 x 48 <sup>A,W</sup>	30 x 50 <sup>W</sup> <b>NEW</b>	32 x 60 <sup>W</sup>	69 x 60 <sup>W</sup>	43 x 64 <sup>W</sup>	26 x 72 <sup>A,W</sup>	57 x 72 <sup>W</sup>	34 x 84 <sup>A,W</sup>
23 x 36 <sup>A,W</sup>	28 x 48 <sup>W</sup>	51 x 50 <sup>W</sup> <b>NEW</b>	32.5 x 60 <sup>W</sup>	69.5 x 60 <sup>W</sup>	46 x 64 <sup>W</sup>	26.5 x 72 <sup>W</sup>	58 x 72 <sup>W</sup>	34.5 x 84 <sup>W</sup>
24 x 36 <sup>W</sup>	28.5 x 48 <sup>W</sup>		33 x 60 <sup>W</sup>	70.5 x 60 <sup>A,W</sup>	47 x 64 <sup>W</sup>	27 x 72 <sup>W</sup>	58.5 x 72 <sup>A,W</sup>	35 x 84 <sup>A,W</sup>
27 x 36 <sup>W</sup>	29 x 48 <sup>W</sup>	<b>- 54 -</b>	33.5 x 60 <sup>W</sup>	71 x 60 <sup>A,W</sup>	48 x 64 <sup>W</sup>	28 x 72 <sup>W</sup>	59 x 72 <sup>A,W</sup>	36 x 84 <sup>W</sup>
28 x 36 <sup>W</sup> <b>NEW</b>	30 x 48 <sup>W</sup>	23 x 54 <sup>W</sup>	34 x 60 <sup>W</sup>	72 x 60 <sup>A,W</sup>	52 x 64 <sup>A,W</sup>	28.5 x 72 <sup>A,W</sup>	62 x 72 <sup>A,W</sup>	39 x 84 <sup>W</sup>
28.5 x 36 <sup>W</sup>	30.5 x 48 <sup>W</sup>	27 x 54 <sup>W</sup>	34.25 x 60 <sup>W</sup>	75 x 60 <sup>W</sup>	54 x 64 <sup>W</sup>	29 x 72 <sup>A,W</sup>	62.5 x 72 <sup>W</sup>	43 x 84 <sup>W</sup>
29 x 36 <sup>A,W</sup>	31 x 48 <sup>W</sup>	29 x 54 <sup>W</sup>	34.5 x 60 <sup>A,W</sup>	77 x 60 <sup>W</sup>	58 x 64 <sup>W</sup>	29.5 x 72 <sup>W</sup>	63 x 72 <sup>A,W</sup>	46 x 84 <sup>W</sup> <b>NEW</b>
30 x 36 <sup>W</sup>	33 x 48 <sup>W</sup>	31 x 54 <sup>W</sup>	34.75 x 60 <sup>A,W</sup>	81 x 60 <sup>W</sup>	70 x 64 <sup>W</sup>	30 x 72 <sup>A,W</sup>	66 x 72 <sup>A,W</sup>	47 x 84 <sup>W</sup>
31 x 36 <sup>A,W</sup>	34 x 48 <sup>W</sup>	33 x 54 <sup>W</sup> <b>NEW</b>	35 x 60 <sup>W</sup>	81.5 x 60 <sup>W</sup>	70.5 x 64 <sup>W</sup>	30.5 x 72 <sup>W</sup>	69 x 72 <sup>W</sup>	58 x 84 <sup>W</sup>
34 x 36 <sup>W</sup>	34.5 x 48 <sup>W</sup>	34 x 54 <sup>W</sup>	35.5 x 60 <sup>W</sup>	82 x 60 <sup>W</sup>	71 x 64 <sup>W</sup>	31 x 72 <sup>A,W</sup>	69.5 x 72 <sup>W</sup>	63 x 84 <sup>W</sup>
34.5 x 36 <sup>A,W</sup>	35 x 48 <sup>A,W</sup>	34.5 x 54 <sup>W</sup>	36 x 60 <sup>W</sup>	82.5 x 60 <sup>W</sup>		31.5 x 72 <sup>W</sup>	70 x 72 <sup>W</sup>	70 x 84 <sup>W</sup>
35 x 36 <sup>A,W</sup>	35.5 x 48 <sup>W</sup>	35 x 54 <sup>A,W</sup>	37 x 60 <sup>W</sup>	93 x 60 <sup>W</sup>		32 x 72 <sup>A,W</sup>	70.5 x 72 <sup>A,W</sup>	71 x 84 <sup>W</sup>
36 x 36 <sup>W</sup>	36 x 48 <sup>W</sup>	36 x 54 <sup>W</sup>	38 x 60 <sup>W</sup>	95 x 60 <sup>A,W</sup>	<b>- 66 -</b>	32.5 x 72 <sup>W</sup>	71 x 72 <sup>A,W</sup>	
46 x 36 <sup>W</sup>	39 x 48 <sup>W</sup>	39 x 54 <sup>W</sup>	38.5 x 60 <sup>W</sup>		34.5 x 66 <sup>W</sup>	33 x 72 <sup>W</sup>	72 x 72 <sup>A,W</sup>	<b>- 96 -</b>
46.5 x 36 <sup>W</sup>	40 x 48 <sup>W</sup>	43 x 54 <sup>W</sup>	39 x 60 <sup>W</sup>	<b>- 62 -</b>		34 x 72 <sup>A,W</sup>	75 x 72 <sup>W</sup>	
47 x 36 <sup>A,W</sup>	40.5 x 48 <sup>W</sup>	57 x 54 <sup>W</sup> <b>NEW</b>	39.5 x 60 <sup>W</sup>	34.5 x 62 <sup>W</sup>		34.25 x 72 <sup>W</sup>	78 x 72 <sup>W</sup>	23 x 96 <sup>W</sup>
48 x 36 <sup>W</sup>	42 x 48 <sup>W</sup>	71 x 54 <sup>W</sup>	40 x 60 <sup>W</sup>		<b>- 68 -</b>	34.5 x 72 <sup>A,W</sup>	83 x 72 <sup>A,W</sup>	27 x 96 <sup>W</sup>
58.5 x 36 <sup>W</sup>	43 x 48 <sup>W</sup>		40.5 x 60 <sup>W</sup>		23 x 68 <sup>W</sup>	34.75 x 72 <sup>W</sup>	84 x 72 <sup>W</sup>	29 x 96 <sup>W</sup>
59 x 36 <sup>A,W</sup>	44 x 48 <sup>W</sup>	<b>- 60 -</b>	41 x 60 <sup>W</sup>	<b>- 64 -</b>	24 x 68 <sup>A,W</sup>	35 x 72 <sup>A,W</sup>	89 x 72 <sup>A,W</sup>	31 x 96 <sup>W</sup>
70 x 36 <sup>W</sup>	45 x 48 <sup>W</sup>	16.5 x 60 <sup>W</sup>	42 x 60 <sup>W</sup>	15 x 64 <sup>W</sup>	24.5 x 68 <sup>W</sup>	35.25 x 72 <sup>W</sup>	95 x 72 <sup>A,W</sup>	35 x 96 <sup>A,W</sup>
70.5 x 36 <sup>W</sup>	46 x 48 <sup>A,W</sup>	17 x 60 <sup>W</sup>	43 x 60 <sup>W</sup>	17 x 64 <sup>W</sup>	25 x 68 <sup>A,W</sup>	35.5 x 72 <sup>A,W</sup>		36 x 96 <sup>W</sup>
71 x 36 <sup>W</sup>	46.5 x 48 <sup>A,W</sup>	18 x 60 <sup>W</sup>	44 x 60 <sup>W</sup>	22 x 64 <sup>W</sup>		36 x 72 <sup>A,W</sup>		39 x 96 <sup>A,W</sup>
	47 x 48 <sup>A,W</sup>	19 x 60 <sup>W</sup>	44.5 x 60 <sup>W</sup>	23 x 64 <sup>W</sup>	<b>- 72 -</b>	37 x 72 <sup>W</sup>	<b>- 78 -</b>	43 x 96 <sup>W</sup>
<b>- 42 -</b>	47.5 x 48 <sup>W</sup>	22 x 60 <sup>W</sup>	46.5 x 60 <sup>A,W</sup>	27 x 64 <sup>W</sup>	10 x 72 <sup>W</sup>	38 x 72 <sup>A,W</sup>	31 x 78 <sup>W</sup>	48 x 96 <sup>A,W</sup>
23 x 42 <sup>W</sup>	48 x 48 <sup>W</sup>	22.5 x 60 <sup>W</sup>	47 x 60 <sup>W</sup>	28 x 64 <sup>W</sup>	11 x 72 <sup>A,W</sup>	39 x 72 <sup>A,W</sup>	34.5 x 78 <sup>W</sup>	
24 x 42 <sup>W</sup>	58.5 x 48 <sup>A,W</sup>	23 x 60 <sup>A,W</sup>	48 x 60 <sup>A,W</sup>	28.5 x 64 <sup>W</sup>	13 x 72 <sup>W</sup>	39.5 x 72 <sup>W</sup>	36 x 78 <sup>W</sup>	
29 x 42 <sup>W</sup>	59 x 48 <sup>A,W</sup>	24 x 60 <sup>W</sup>	53 x 60 <sup>W</sup> <b>NEW</b>	30 x 64 <sup>W</sup>	14.5 x 72 <sup>W</sup>	40 x 72 <sup>W</sup>	47 x 78 <sup>W</sup>	
34.5 x 42 <sup>W</sup>	60 x 48 <sup>W</sup>	24.5 x 60 <sup>W</sup>	54 x 60 <sup>W</sup>	30.5 x 64 <sup>W</sup>	16 x 72 <sup>W</sup>	40.5 x 72 <sup>W</sup>		<b>- 84 -</b>
46.5 x 42 <sup>W</sup>	63 x 48 <sup>W</sup>	25 x 60 <sup>W</sup>	57 x 60 <sup>W</sup> <b>NEW</b>	31 x 64 <sup>W</sup>	17 x 72 <sup>W</sup>	41 x 72 <sup>W</sup>		
		26 x 60 <sup>W</sup>	58 x 60 <sup>A,W</sup>	32 x 64 <sup>W</sup>	18 x 72 <sup>W</sup>	42 x 72 <sup>W</sup>		

**PACKAGING** Up to 36.5" wide: 4 per carton. | 37" to 47.5" wide: 3 per carton. | 48" or wider: 2 per carton.

A = Available in Alabaster | W = Available in White | A,W = Available in Alabaster and White

PRODUCT CODE

FEX

# 2" Embossed Faux Wood

AVAILABLE IN WHITE



## Warehouse and Container



2" Wide Slats for Designer Look

1-Year Warranty

3-1/4" Crown Valance

Heavy Duty Steel Headrail

Child-Safe Wand Design

Static Resistant Slats Won't Warp or Crack

*All widths are 1/2" less than stated size to allow for inside mounting*

**THE BEAUTIFUL LOTUS & WINDOWARE 2" FAUX WOOD BLIND OFFERS THE WARM LOOK OF WOOD AT AN AFFORDABLE PRICE.** This solid blind is still as functional and sturdy as ever, but with a more natural look for cozier settings. With a smooth grain finish, the slats are still easy to clean making them perfect for high-traffic areas. Another affordable compliment to a wide array of settings.

# SPECIFICATIONS

## » HEADRAIL

Sturdy roll formed steel  
2.28" width x 1.55" height x  
0.016" thick.

## » BOTTOMRAIL

Hollow extruded PVC bottomrail  
2.05" width x 0.866" height x  
0.075" thick.

## » SLAT

Delicate wood grain finish  
0.11" thick x 1.969" width

## » VALANCE

Plain finish Faux wood  
crown valance.  
0.177" thick x 3.25" width.

## » TAPE ROLLER SUPPORT

Injection molded plastic  
with metal roller  
minimizing cord tray.

## » WAND

Injection molded plastic

## » TAPE ROLLER

Injection molded plastic  
with ladder locking legs.

## » TILT ROD

Hexagonal steel shaft.  
0.22 diameter.

## » TILTER

Injection molded plastic  
wheel with plastic hood.

## » BOTTOMRAIL ANCHORS

Injection molded plastic.

## » LADDER

Braided polyester ladder 2.126"  
spacing x 1.81" height.

## » CENTER SUPPORT

Plated steel.

## » MOUNTING BRACKET

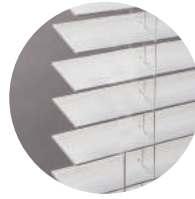
Painted steel with hinged  
locking front cover.



Crown Valance with  
low profile headrail



Bottomrail-Hollow  
Extruded PVC



Slat - Flat PVC foam



PRODUCT CODE **FEX**

### - 36 -

23 x 36  
35 x 36  
47 x 36  
59 x 36  
71 x 36

### - 60 -

23 x 60  
27 x 60  
29 x 60  
31 x 60  
34 x 60  
34.5 x 60  
35 x 60  
36 x 60  
37 x 60  
39 x 60  
43 x 60  
46 x 60  
47 x 60  
48 x 60  
53 x 60  
58.5 x 60  
59 x 60  
63 x 60  
70 x 60  
70.5 x 60  
71 x 60  
72 x 60

### - 72 -

12 x 72  
17 x 72  
23 x 72  
24 x 72  
25 x 72  
27 x 72  
29 x 72  
31 x 72  
34 x 72  
34.5 x 72  
35 x 72  
36 x 72  
37 x 72  
39 x 72  
43 x 72  
46 x 72  
47 x 72  
48 x 72  
52 x 72  
54 x 72  
59 x 72  
63 x 72  
70 x 72  
70.5 x 72  
71 x 72  
72 x 72  
85 x 72  
95 x 72

### - 84 -

25 x 84  
27 x 84  
31 x 84  
35 x 84  
36 x 84  
43 x 84  
48 x 84

### - 48 -

23 x 48  
29 x 48  
35 x 48  
41 x 48  
47 x 48  
53 x 48  
59 x 48  
71 x 48  
72 x 48

### - 64 -

35 x 64  
36 x 64  
52 x 64

**PACKAGING** Up to 36.5" wide: 4 per carton. | 37" to 47.5" wide: 3 per carton. | 48" or wider: 2 per carton.

Available in White

# 2-1/2" Faux Wood Blind

AVAILABLE IN WHITE

NEW FOR 2020! AVAILABLE IN SEPTEMBER



## Warehouse and Container



Most Complete Assortment of Stock Sizes Available

2-1/2" Wide Slats for Designer Look

1-Year Warranty

3-1/4" Crown Valance Complete With 1/2" Mitered Returns

Heavy Duty Metal, High Profile Headrail

Static Resistant Slats Won't Warp or Crack

Child-Safe Cordless Design

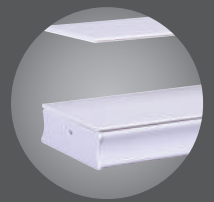
*All widths are 1/2" less than stated size to allow for inside mounting*



Crown Valance with High Profile Headrail



Slat - Flat PVC Foam



Bottomrail - Hollow Extruded PVC

### THE BEAUTIFUL LOTUS & WINDOWARE 2-1/2" FAUX WOOD BLIND OFFERS THE WARM LOOK OF WOOD AT AN AFFORDABLE PRICE.

The 2-1/2" Faux Wood Blind is engineered using a unique steel headrail with new memory flexibility technology making it more durable. The specially engineered hollow bottomrail makes operation smooth and holds slats in perfect alignment.

Our 2-1/2" Faux Wood Blind is made of a static and fade resistant synthetic material that won't crack, split or warp. The 2-1/2" Faux Wood Blinds are easy to clean so they are great for kids' rooms. The elegance, low maintenance and affordability of our 2-1/2" Faux Wood Blind makes it the perfect compliment to any window.

# SPECIFICATIONS

## » HEADRAIL

Painted roll formed high profile steel headrail 2.25" width x 2.01" height x 0.02" thick.

## » HEADRAIL ENDCAPS

Injection molded PVC.

## » BOTTOMRAIL

Hollow extruded PVC bottomrail 2.56" width x 0.866" height x 0.075" thick.

## » BOTTOMRAIL ENDCAPS

Injection molded plastic.

## » WAND

Extruded PVC round shape. 0.394" diameter.

## » SLAT

Plain finish Faux wood .10" thick x 2.50" width.

## » VALANCE

Plain finish Faux wood crown valance 0.177" thick x 3.25" width.

## » TAPE ROLLER SUPPORT

Injection molded plastic with metal roller minimizing cord tray.

## » TAPE ROLLER

Injection molded plastic with ladder locking legs.

## » TILT ROD

Aluminum .244."

## » TILTER

Injection molded plastic clear housing.

## » LADDER

Woven polyester ladder 2.28" spacing.

## » BOTTOMRAIL ANCHORS

Injection molded plastic.

## » CENTER SUPPORT

Painted steel.

## » MOUNTING BRACKET

Painted steel with hinged locking front cover.

## » HOLD DOWN BRACKET

Plated steel.

## CROWN VALANCES

Available in White

### Miter-Cut PRODUCT CODE CV-M

26      36      72

### Straight-Cut PRODUCT CODE CV-S

35      70      95      120  
63      71      108

## CROWN VALANCE RETURN SETS

Available in White

PRODUCT CODE

**CVR-M** (Mitered)

**CVR-S** (Straight - uses CVCorner clip)

5/8"    1-5/8"    2-1/2"

PRODUCT CODE

# FGX

### - 24 -

23 x 24

### - 36 -

22.5 x 36

23 x 36

35 x 36

47 x 36

59 x 36

71 x 36

### - 48 -

23 x 48

27 x 48

31 x 48

35 x 48

36 x 48

42 x 48

46 x 48

46.5 x 48

47 x 48

48 x 48

58 x 48

58.5 x 48

59 x 48

71 x 48

72 x 48

### - 60 -

22.5 x 60

23 x 60

27 x 60

29 x 60

30 x 60

31 x 60

32 x 60

34 x 60

34.5 x 60

35 x 60

35.5 x 60

36 x 60

39 x 60

43 x 60

46.5 x 60

47 x 60

54 x 60

58 x 60

58.5 x 60

59 x 60

63 x 60

70 x 60

70.5 x 60

71 x 60

72 x 60

### - 64 -

35 x 64

### - 72 -

11 x 72

17 x 72

22.5 x 72

23 x 72

24 x 72

25 x 72

27 x 72

28.5 x 72

29 x 72

30.5 x 72

30 x 72

31 x 72

34 x 72

34.5 x 72

35 x 72

36 x 72

39 x 72

43 x 72

46.5 x 72

47 x 72

48 x 72

54 x 72

58.5 x 72

59 x 72

62.5 x 72

63 x 72

70 x 72

70.5 x 72

71 x 72

72 x 72

### - 84 -

23 x 84

25 x 84

29 x 84

31 x 84

35 x 84

39 x 84

43 x 84

47 x 84

### - 96 -

27 x 96

35 x 96

39 x 96

48 x 96

**PACKAGING** Up to 36.5" wide: 4 per carton. | 37" to 47.5" wide: 3 per carton. | 48" or wider: 2 per carton.

Available in White

VS

# 3-1/2" Economy Vertical Blind



All Sizes Available in the Most Popular Smooth Finish White

Child-Safe Wand Control

Stack Left or Right

Heavy Duty Roll Formed Steel Headrail

1-Year Warranty

Complete with Matching Valance



WITH SMOOTH CURVED VANES  
CON TIRAS CURVAS SUAVES

**FEATURES**  
 • Color-matched heavy-duty steel track  
 • Removable slat covers when closed  
 • Color-coordinated vinyl rollers with heavy-duty  
 • Removable child-resistant blind for maximum view or total privacy  
 • Easy-to-use cordless or corded remote  
 • Complete blind assembly instructions provided

**PACKAGE CONTAINS**  
 • One set of vinyl vanes and valance  
 • Heavy-duty steel track  
 • Removable brackets  
 • Easy-to-use vinyl cordless installation  
 • Installation tools

**CONTENIDO**  
 • Un juego de tiras de vinil y valance  
 • Riel metálico de acero  
 • Soportes removibles para maximizar la vista o privacidad total  
 • Herramientas fáciles para instalación

**CARACTERÍSTICAS**  
 • Riel metálico de acero de alto peso  
 • Cajas de tiras  
 • Rodillos de vinil con recubrimiento de PVC  
 • Soportes removibles para maximizar la vista o privacidad total  
 • Fácil de usar por mando a distancia o manual  
 • Instrucciones completas

<b>-36-</b>	63 x 60
35 x 36	70 x 60
47 x 36	71 x 60
59 x 36	72 x 60
71 x 36	78 x 60
102 x 36	102 x 60
<b>-46-</b>	<b>-72-</b>
46 x 46	34 x 72
	35 x 72
	43 x 72
<b>-48-</b>	47 x 72
23 x 48	59 x 72
35 x 48	63 x 72 <b>NEW</b>
43 x 48	71 x 72 <b>NEW</b>
46.5 x 48	72 x 72
47 x 48	78 x 72
58.5 x 48	102 x 72
59 x 48	<b>-84-</b>
63 x 48	54 x 84 <sup>A</sup>
70.5 x 48	59 x 84
71 x 48	66 x 84 <sup>A</sup>
72 x 48	71 x 84 <sup>A</sup>
78 x 48	72 x 84
102 x 48	78 x 84 <sup>A</sup>
	85 x 84 <sup>A</sup>
<b>-58-</b>	97 x 84 <sup>A</sup>
34 x 58	102 x 84 <sup>A</sup>
46 x 58	104 x 84 <sup>A</sup>
58 x 58	110 x 84 <sup>A</sup>
	116 x 84 <b>NEW</b>
<b>-60-</b>	<b>-96-</b>
23 x 60	66 x 96
35 x 60	78 x 96
43 x 60	102 x 96
47 x 60	104 x 96
59 x 60	110 x 96
	116 x 96 <b>NEW</b>

All Sizes Available in Smooth Finish White  
 A = Also Available in Smooth Finish Alabaster.  
 All Sizes are Outside Mounts



End Control - PVC Idle End



Carriers - Injection Molded PVC



30" Wand

## SPECIFICATIONS

### » HEADRAIL

Headrail is made of roll formed steel 1-1/2" wide by 1-1/4" high with a minimum thickness of 0.02". Headrail only in White color, use on White and Alabaster slats.

### » WAND

30" wand.

### » VANES

Made of extruded, non-leaded rigid PVC. Vane thickness is 0.0197" to 0.0236". Vanes are 3-1/2" wide and are flame retardant.

### » CARRIERS

Injection molded PVC with eight-prong rotation system, carriers have self-lubricating wheels for reduced friction. Carriers allow for 180 degree simultaneous rotation.

### » STACK

Available in one way draw that will stack left or right.

### » END CONTROL

Each end is equipped with an injection molded PVC idle end which supports the pinion rod.

### » PINION ROD

The pinion rod is an eight-prong system made of extruded aluminum. The pinion rod passes through each carrier and allows for simultaneous rotation.



**PACKAGING** 2 per carton

PRODUCT CODE

VH

# Economy Steel Vertical Headrails

Warehouse and Container

22.5	46	63	78
28.5	46.5	64 <b>NEW</b>	85
29	47	66	86
34	48	69.5	94
34.5	53 <b>NEW</b>	70	94.5
35	54	70.5	96
36	57	71	102
38	58	72	104
41	58.5	75	110
43	59	76	118
45.5	60		

## PACKAGING

Bulk packed, individually wrapped  
Widths less than 32" - 12 pieces per carton  
Widths 32" and above - 6 pieces per carton

All Sizes Available in White

VANES SOLD SEPARATELY



## SPECIFICATIONS

### » HEADRAIL

Headrail is made of roll formed steel 1-1/2" wide by 1-1/4" high with a minimum thickness of 0.02".

### » CARRIERS

Injection molded PVC with eight-prong rotation system, carriers have self-lubricating wheels for reduced friction. Carriers allow for 180 degree simultaneous rotation.

### » END CONTROL

Each end is equipped with an injection molded PVC idle end which supports the pinion rod.

### » PINION ROD

The pinion rod is an eight-prong system made of extruded aluminum. The pinion rod passes through each carrier and allows for simultaneous rotation.

### » WAND

30" wand.

### » BRACKET

Painted Steel.

### » STACK

Available in one way draw that will stack left or right.

VANES SOLD SEPARATELY



*Headrail Only makes boosting inventory easy - just add vanes!*

## Optional Length Wands

WHITE AND ALABASTER

Length in inches 48 | 60 | 72

PRODUCT CODE | VS-WAND

# Options Ready-Made Vertical Blind

Headrails constructed of Sturdy Aluminum with Brackets for inside or Outside Mounting

Smooth Curved PVC Vanes

Wand-Control

1-Year Warranty

Complete with Matching Valance

We took your favorite aluminum headrails and added the hardware and vanes into one package to help you sell and install much faster, keeping your inventories ready and your customers happy. The headrail is reversible making left or right stacking available. Complete with the easy-care room-darkening vanes you already know. Make room for more Options!

## OPTIONS READY-MADE VERTICAL BLIND

### ONE-WAY, DRAW

PRODUCT CODE | VNOW

- 84 -

78 x 84

104 x 84 **NEW**

### CENTER-DRAW

PRODUCT CODE | VNCW

- 84 -

144 x 84 **NEW**

**PACKAGING** 2 per carton

# Options Aluminum Vertical Headrails

All sizes available in White only unless noted. Outside Mount, Width in Inches.



**CERTIFIED** BEST FOR KIDS **ONE-WAY, DRAW WAND-CONTROL** PRODUCT CODE | VNOW

34	46	58	67.5	72	94.5 <sup>A</sup>	112	126
35	47	58.5 <sup>A</sup>	69	75	95.5	116	144
35.5 <sup>A</sup>	48 <sup>A</sup>	60	69.5	78 <sup>A</sup>	102 <sup>A</sup>	118	147
38	53 <b>NEW</b>	63	70 <sup>A</sup>	85	106	120	156
43	54	66 <sup>A</sup>	71	94	110	124	192
45							

**CERTIFIED** BEST FOR KIDS **CENTER-DRAW WAND-CONTROL** PRODUCT CODE | VNCW

60	112	122	144 <sup>A</sup>
70 <sup>A</sup>	116 <sup>A</sup>	126	148
106	118	138	156 <sup>A</sup>
110	120	140 <sup>A</sup>	

All Sizes Available in White Only, Unless Noted  
A = Also Available in Alabaster

**VANES SOLD SEPARATELY**

## SPECIFICATIONS

- » **HEADRAIL**  
Extruded Aluminum 1.736" width x 1.299" height x 0.03" thick
- » **VANE HANGER**  
Injection molded plastic with single opening
- » **CARRIER**  
Injection molded plastic carrier with self-aligning clutch system.
- » **PINION ROD**  
Four-prong extruded aluminum.
- » **BRACKET**  
Painted Steel.
- » **WAND CONTROL**  
Attached injection molded plastic swivel tilter with 30" metal wand, 0.315" diameter.



One-Way Draw

Wand Control

### PACKAGING

Bulk packed, individually wrapped  
Widths 36" and below - 12 pieces per carton  
Widths over 36" - 6 pieces per carton

Warehouse and Container

# 3-1/2" Room Darkening Vertical Vanes

Made of extruded nonleaded rigid PVC. Vane thickness is .0197" to .0236". Vanes are 3-1/2" wide and are flame retardant.

## .020" VERTICAL VANES SMOOTH WHITE

100 pieces per carton

36	51.5	64	93.5
43.5	52.5 <b>NEW</b>	69	94.5
44 <b>NEW</b>	54 <b>NEW</b>	78	96
44.5	56 <b>NEW</b>	81.5	97.5
45	56.5	82.5	98.5
46	58	84	100
46.5 <b>NEW</b>	58.5	92 <b>NEW</b>	110
47	59 <b>NEW</b>	92.5	120
48	60		



White

## .020" VERTICAL VANES SMOOTH ALABASTER

100 pieces per carton

46	82.5
48 <b>NEW</b>	84
56.5	96
60	120

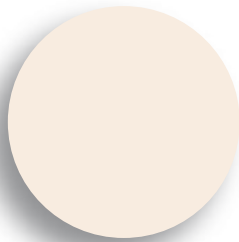


Alabaster

## .020" VERTICAL VANES SMOOTH IVORY

100 pieces per carton

82.5
------



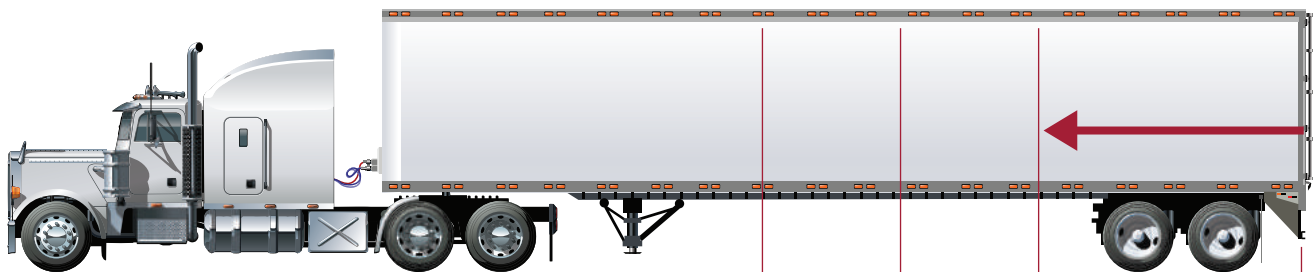
Ivory

# Order less than a container at container prices!

Call to order today!

## ADD-ON CONTAINER ORDERING

Looking for a more cost-effective means of ordering large quantities? Would you like to offer your customers more competitive pricing? Here is the answer!



Lotus & Windaware offers a scalable container program to help meet your cost and space needs. Ordering 8 to 12\* weeks in advance allows you to receive container pricing for less-than-container orders. Best of all, you still get standard terms and can place these orders as often as you like. This program is perfect for those special contract jobs and the items for which you have a steady demand.

\*PEAK SEASON MAY AFFECT DELIVERY TIME.



## Buy More & Save!





LOTUS



WINDOWWARE

INCORPORATED

6225 Glendale Drive, Suite 110, Memphis, TN 38141

LOTUSBLIND.COM