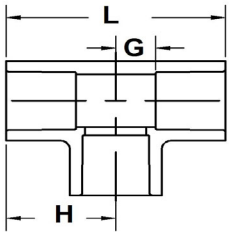


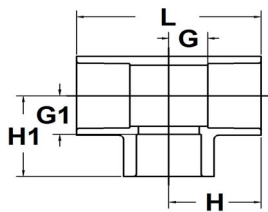
# **SCH 80 - PVC**

## Pressure Fittings

# SCHEDULE 80 PVC



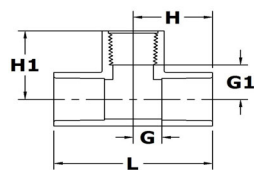
Tee				
Part No	Size (in)	L	H	G
801-002	¼	1 7/8	15/16	5/16
801-003	⅜	2 5/16	1 5/32	13/32
801-005	½	2 25/32	1 3/8	1/2
801-007	¾	3 5/32	1 9/16	9/16
801-010	1	3 25/32	1 7/8	23/32
801-012	1¼	4 9/32	2 5/32	7/8
801-015	1½	4 25/32	2 3/8	1 1/32
801-020	2	5 17/32	2 25/32	1 9/32
801-025	2½	6 17/32	3 1/4	1 1/2
801-030	3	7 7/16	3 3/4	1 27/32
801-040	4	9 1/8	4 19/32	2 11/32
801-060	6	13	6 9/16	3 9/16
801-080	8	18 5/32	9 5/32	4 21/32
801-100	10	22	11 1/32	6
801-120	12	26 1/4	13 5/32	7 5/32



### Reducing Tee

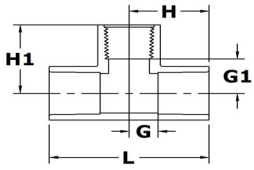
Part No	Size (in)	L	H	H1	G	G1
801-101	¾ x ¾ x ½	3 1/32	1 1/2	1 21/32	1/2	3/4
801-130	1 x 1 x ½	3 9/32	1 5/8	1 21/32	1/2	3/4
801-131	1 x 1 x ¾	3 3/4	1 15/16	1 3/4	13/16	3/4
801-168	1¼ x 1¼ x 1	4 1/4	2 1/8	2	7/8	7/8
801-210	1½ x 1½ x ¾	4 3/4	2 3/8	2	1	1
801-211	1½ x 1½ x 1	4 3/4	2 3/8	2 9/32	1 1/16	1
801-212	1½ x 1½ x 1¼	4 3/4	2 3/8	2 3/8	1	1 5/32
801-247	2 x 2 x ½	5 17/32	2 3/4	2 3/32	1 9/32	1 7/32
801-248	2 x 2 x ¾	5 17/32	2 3/4	2 1/4	1 1/4	1 1/4
801-249	2 x 2 x 1	5 17/32	2 3/4	2 3/8	1 1/4	1 1/4
801-250	2 x 2 x 1¼	5 3/32	2 17/32	2 19/32	1	1 11/32
801-251	2 x 2 x 1½	5 1/8	2 19/32	2 19/32	1 1/16	1 7/32
801-290	2½ x 2½ x 1¼	6 17/32	3 1/4	3	1 1/2	1 3/4
801-291	2½ x 2½ x 1½	6 17/32	3 1/4	2 29/32	1 1/2	1 17/32
801-292	2½ x 2½ x 2	6 1/2	3 1/4	3	1 1/2	1 1/2
801-337	3 x 3 x 1½	6 1/2	3 7/32	3 1/4	1 5/16	1 7/8
801-338	3 x 3 x 2	6 7/16	3 7/32	3 3/8	1 5/16	1 7/8
801-420	4 x 4 x 2	7 7/32	3 5/8	3 15/16	1 11/32	2 13/32
801-422	4 x 4 x 3	8 5/16	4 5/32	4 9/32	1 29/32	2 3/8
801-530	6 x 6 x 3	9 3/4	4 7/8	5 13/32	1 7/8	3 1/2
801-532	6 x 6 x 4	10 3/4	5 3/8	5 25/32	2 3/8	3 1/2
801-580	8 x 8 x 3	18 5/32	9 3/32	10 7/16	4 19/32	8 17/32
801-585*	8 x 8 x 6	18 5/32	9 3/32	9 29/32	4 19/32	6 29/32
801-623*	10 x 10 x 3	22	11 1/32	11 15/16	6 1/32	10
801-624*	10 x 10 x 4	22	11	11 15/16	6 1/32	9 21/32
801-626*	10 x 10 x 6	22	11	11 13/32	6	8 7/16
801-628*	10 x 10 x 8	22	11 1/32	11 15/32	6	7 15/32
801-666*	12 x 12 x 6	26 1/4	13 1/8	14 11/32	7 5/32	11 11/32
801-668*	12 x 12 x 8	26 1/4	13 1/8	13 19/32	7 5/32	9 9/16
801-670*	12 x 12 x 10	26 1/4	13 1/8	13 5/8	7 5/32	8 19/32

\*Sized with Bushing

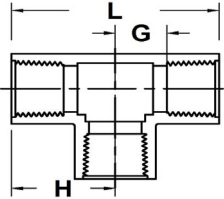


### Tee

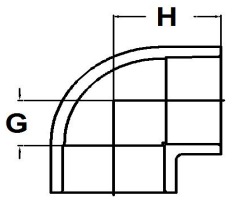
Part No	Size (in)	L	H	H1	G	G1
802-005	½	2 3/4	1 13/32	1 5/32	17/32	15/32
802-007	¾	3 7/32	1 5/8	1 1/4	5/8	9/16
802-010	1	3 3/4	1 7/8	1 7/8	3/4	11/16
802-012	1¼	4 1/4	2 1/8	2 5/32	7/8	7/8
802-015	1½	4 13/16	2 13/32	2 3/32	1 1/32	1 1/32
802-020	2	5 19/32	2 25/32	2 3/8	1 9/32	1 9/32



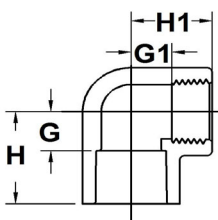
Tee						
Part No	Size (in)	L	H	H1	G	G1
802-250	2 x 2 x 1¼	5 1/8	2 9/16	2 1/2	1 1/32	1 19/32
802-251	2 x 2 x 1½	5 1/8	2 9/16	2 1/4	1 1/32	1 5/16
802-291	2½ x 2½ x 1½	6 1/2	3 1/4	2 7/16	1 1/2	1 1/2



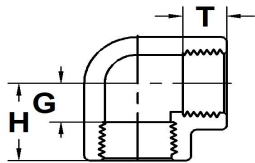
Tee				
Part No	Size (in)	L	H	G
805-002	¼	1 11/16	7/8	5/16
805-003	⅜	1 7/8	15/16	13/32
805-005	½	2 5/16	1 5/32	15/32
805-007	¾	2 17/32	1 1/4	9/16
805-010	1	3 3/4	1 7/8	21/32
805-012	1¼	4 11/32	2 5/32	27/32
805-015	1½	4 7/8	2 7/16	15/16
805-020	2	4 17/32	2 1/4	1 5/16
805-025	2½	6 1/32	3 1/32	1 19/32
805-030	3	6 15/32	3 1/4	1 3/4
805-040	4	8 1/8	4 1/16	2 1/2



90° Ell			
Part No	Size (in)	H	G
806-002	¼	15/16	5/16
806-003	⅜	1 1/8	3/8
806-005	½	1 3/8	1/2
806-007	¾	1 9/16	9/16
806-010	1	1 13/16	11/16
806-012	1¼	2 1/8	7/8
806-015	1½	2 7/16	1 1/16
806-020	2	2 3/4	1 1/4
806-025	2½	3 17/32	1 3/4
806-030	3	4 3/32	2 3/16
806-040	4	4 9/16	2 5/16
806-060	6	6 1/2	3 1/2
806-080	8	9 3/32	5 17/32
806-100	10	11 1/16	6 1/32
806-120	12	13 1/8	7 1/8

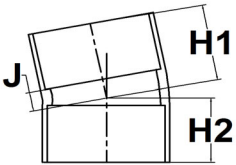


90° Ell					
Part No	Size (in)	H	H1	G	G1
807-005	½	1 3/8	1 1/3	1/2	1/2
807-007	¾	1 3/4	1 3/4	3/4	3/4
807-010	1	1 7/8	1 8/9	3/4	3/4
807-012	1¼	2 3/16	2 3/16	3/4	3/4
807-015	1½	2 3/8	1 29/32	1	1
807-020	2	2 3/4	2 1/4	1 1/4	1 1/4



### 90° EII

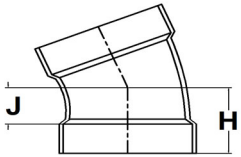
Part No	Size (in)	H	G	T
808-002	¼	27/32	5/16	9/16
808-003	⅜	15/16	13/32	17/32
808-005	½	1 3/8	1/2	7/8
808-007	¾	1 3/4	3/4	1
808-010	1	1 5/8	23/32	7/8
808-012	1¼	2 3/16	25/32	1 3/8
808-015	1½	1 29/32	1	15/16
808-020	2	2 1/4	1 9/32	1
808-025	2½	2 13/16	1 15/32	1 11/32
808-030	3	2 7/32	1 25/32	1 7/16
808-040	4	4	2 1/4	1 3/4



### 11½° EII

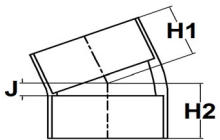
Part No	Size (in)	H1	H2	J
861-100*	10*	6 5/8	6 5/8	1
861-120*	12	7 9/32	7 7/16	1

H1 & H2 is lay length of each side



### 22½° EII

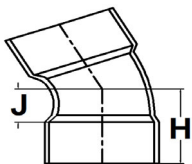
Part No	Size (in)	H	J
865-020	2	1 15/16	7/16
865-030	3	2 7/16	9/16



### 22½° EII

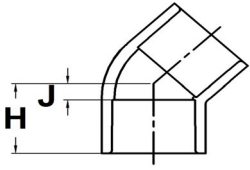
Part No	Size (in)	H1	H2	J
865-100*	10	6 15/16	7 1/16	1 1/2
865-120*	12	7 31/32	8 3/8	1 3/4

H1 & H2 is lay length of each side

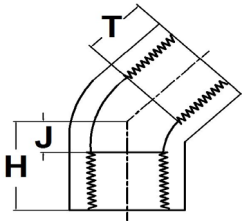


### 30° EII

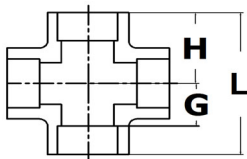
Part No	Size (in)	H	J
815-060	6	4	1



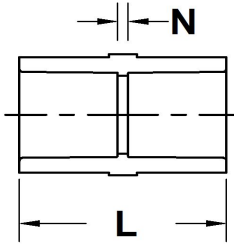
45° EI			
Part No	Size (in)	H	J
817-002	¼	13/16	1/8
817-003	⅜	15/16	3/16
817-005	½	1 1/8	1/4
817-007	¾	1 5/16	5/16
817-010	1	1 1/2	3/8
817-012	1¼	1 23/32	7/16
817-015	1½	1 7/8	1/2
817-020	2	2 1/8	5/8
817-025	2½	2 1/2	3/4
817-030	3	2 25/32	7/8
817-040	4	3 5/16	1
817-060	6	4 3/4	1 3/4
817-080	8	6 13/16	2 5/16
817-100	10	7 7/16	2 7/16
817-120	12	9	2 15/16



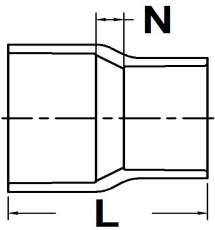
45° EI				
Part No	Size (in)	H	J	T
819-005	½	1 1/32	1/4	3/4
819-007	¾	1 3/16	3/8	13/16
819-010	1	1 11/32	3/8	1
819-012	1¼	1 13/32	3/8	1 1/32
819-015	1½	1 1/2	1/2	1 1/32
819-020	2	1 3/4	11/16	1 1/16
819-025	2½	2 17/32	31/32	1 3/8
819-030	3	2 7/16	3/4	1 11/16
819-040	4	2 25/32	1	1 25/32



Cross				
Part No	Size (in)	L	H	G
820-015	1½	4 3/4	2 3/8	1
820-020	2	6 1/8	3 1/16	1 1/4
820-030	3	8 1/4	4 1/8	1 13/16
820-040	4	9 3/4	4 7/8	2 5/8

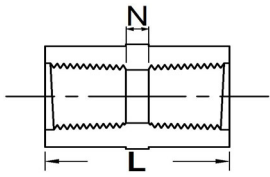


<b>Coupling</b>			
Part No	Size (in)	L	N
829-002	¼	1 11/32	1/16
829-003	⅜	1 5/8	1/8
829-005	½	1 7/8	1/8
829-007	¾	2 1/8	1/8
829-010	1	2 1/2	1/4
829-012	1¼	2 13/16	1/4
829-015	1½	3 1/16	1/4
829-020	2	3 5/16	1/4
829-025	2½	3 25/32	1/4
829-030	3	4	1/4
829-040	4	4 3/4	3/16
829-060	6	6 5/16	1/4
829-080	8	9 5/16	1/4
829-100	10	10 3/8	5/16
829-120	12	12 7/16	3/8



<b>Reducer Coupling</b>			
Part No	Size (in)	L	N
829-101	¾ x ½	2 5/32	1/8
829-131	1 x ¾	2 1/4	1/8
829-168	1¼ x 1	2 17/32	1/8
829-210	1½ x ¾	2 7/8	17/32
829-211	1½ x 1	2 21/32	1/8
829-212	1½ x 1¼	2 13/16	1/8
829-251	2 x 1½	3 1/16	1/8
829-338	3 x 2	3 5/8	3/16
829-422	4 x 3	4 3/8	1/4
829-532*	6 x 4	6 13/16	1 1/2
829-585	8 x 6	10 25/32	2 23/32
829-619*	10 x 2	11 9/32	4 3/4
829-623*	10 x 3	11 9/32	4 3/8
829-624*	10 x 4	11 9/32	4
829-626*	10 x 6	10 25/32	2 3/8

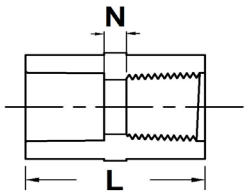
\*Sized with Bushing



### Coupling

Part No	Size (in)	L	N	Body Dia.
830-002	¼	1 5/16	1/4	27/32
830-005	½	2	1/4	1 5/16
830-007	¾	2 1/4	1/4	1 9/16
830-010	1	2 1/2	1/4	1 27/32
830-012	1¼	2 25/32	1/4	2 7/32
830-015	1½	3 1/16	1/4	2 1/2
830-020	2	3 5/16	1/4	3
830-025	2½	3 3/8	1/4	3 3/4
830-030	3	3 9/16	5/16	4 7/32
830-040	4	3 3/4	7/16	5 1/2

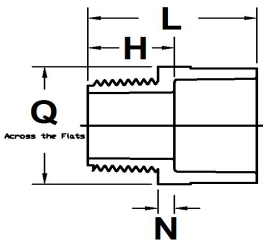
Body diameter measured across hex flats ( if applicable)



### Female Adapter

Part No	Size (in)	L	N	Body Dia.
835-002	¼	1 7/16	3/16	15/16
835-005	½	2	1/4	1 3/8
835-007	¾	2 1/4	1/4	1 9/16
835-010	1	2 1/2	1/4	1 7/8
835-012	1¼	2 25/32	1/4	2 7/32
835-015	1½	3 1/16	1/4	2 17/32
835-020	2	3 5/16	1/4	3 1/16
835-025	2½	3 13/16	1/4	3 5/8
835-030	3	4 1/16	1/4	4 11/32
835-040	4	4 25/32	1/4	5 1/2

Body diameter measured across hex flats ( if applicable)

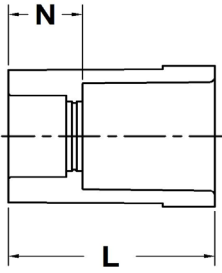


### Male Adapter

Part No	Size (in)	L	N	H	Q
836-005	½	1 7/8	1/4	1	1 7/32
836-007	¾	2	1/4	1 1/32	1 7/16
836-010	1	2 3/8	1/4	1 7/32	1 3/4
836-012	1¼	2 9/16	1/4	1 9/32	2 1/8
836-015	1½	2 11/16	5/16	1 5/16	2 3/8
836-020	2	2 29/32	5/16	1 3/8	2 7/8
836-025	2½	3 11/16	3/8	1 31/32	3 1/2
836-030	3	3 15/16	3/8	2	4 5/32
836-040	4	4 1/2	15/32	2 7/32	5 9/32

Q is Hex outside diameter measured across flats

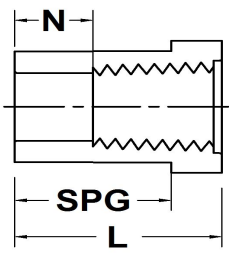




<b>Reducer Bushing (Flush Style)</b>				
Part No	Size (in)	L	N	Hex O.D.
837-052	3/8 x 1/4	1	3/8	3/4
837-072	1/2 x 1/4	1 3/16	9/16	7/8
837-073	1/2 x 3/8	1 7/32	7/16	7/8
837-101	3/4 x 1/2	1 1/16	1/4	1 3/32
837-130	1 x 1/2	1 7/16	17/32	1 3/8
837-131	1 x 3/4	1 1/4	15/32	1 3/8
837-166	1 1/4 x 1/2	1 9/16	11/16	1 27/32
837-167	1 1/4 x 3/4	1 9/16	1/2	1 25/32
837-168	1 1/4 x 1	1 9/16	7/16	1 27/32
837-209	1 1/2 x 1/2	1 11/16	13/16	2 1/16
837-210	1 1/2 x 3/4	1 11/16	5/8	2 1/16
837-211	1 1/2 x 1	1 11/16	9/16	2 1/32
837-212	1 1/2 x 1 1/4	1 11/16	15/32	2 1/16
837-247	2 x 1/2	1 13/16	15/16	2 1/2
837-248	2 x 3/4	1 13/16	25/32	2 1/2
837-249	2 x 1	1 13/16	25/32	2 1/2
837-250	2 x 1 1/4	1 13/16	9/16	2 1/2
837-251	2 x 1 1/2	1 13/16	3/8	2 7/16
837-289	2 1/2 x 1	2 5/16	1 1/4	2 15/16
837-290	2 1/2 x 1 1/4	2.31	1.07	3
837-291	2 1/2 x 1 1/2	2 5/16	29/32	2 15/16
837-292	2 1/2 x 2	2 7/32	11/16	2 15/16
837-335	3 x 1	2 15/32	1 5/16	3 9/16
837-336	3 x 1 1/4	2 7/16	1 3/16	3 9/16
837-337	3 x 1 1/2	2 15/32	1 3/32	3 9/16
837-338	3 x 2	2 1/4	3/4	3 17/32
837-339	3 x 2 1/2	2 15/32	11/16	3 5/8
837-420	4 x 2	2 13/16	1 9/32	4 9/16
837-421*	4 x 2 1/2	3 7/32	1 7/16	3 5/8
837-422	4 x 3	2 21/32	23/32	4 9/16
837-528	6 x 2	3 17/32	2	6 15/16
837-530	6 x 3	3 17/32	1 21/32	6 15/16
837-532	6 x 4	3 17/32	1 3/4	6 15/16
837-585	8 x 6	5 5/16	2 5/16	8 3/4
837-624*	10 x 4	5 31/32	3 11/16	6 31/32
837-626	10 x 6	5 7/16	2 7/16	11 9/16
837-628	10 X 8	5 7/16	1 7/16	11 9/16
837-666*	12 x 6	6 7/8	2 7/8	11 19/32
837-668	12 x 8	6 13/32	2 3/8	13 3/4
837-670	12 x 10	6 15/32	1 7/16	13 3/4

\*Sized with Bushing

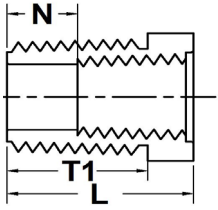
Hex outside diameter measured across hex flats



**Reducer Bushing (Flush Style)**

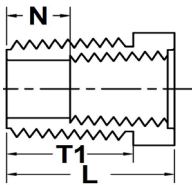
Part No	Size (in)	L	N	SPG	Hex O.D.
838-052	3/8 x 1/4	1	3/8	25/32	13/16
838-072	1/2 x 1/4	1 3/16	15/32	7/8	7/8
838-098	3/4 x 1/4	1 7/32	5/8	1	1 3/16
838-101	3/4 x 1/2	1 1/16	1/4	25/32	1 1/16
838-130	1 x 1/2	1 1/4	1/2	1	1 3/8
838-131	1 x 3/4	1 1/4	13/32	1	1 11/32
838-166	1 1/4 x 1/2	1 9/16	1/2	1 1/4	1 25/32
838-167	1 1/4 x 3/4	1 9/16	3/4	1 1/4	1 13/16
838-168	1 1/4 x 1	1 9/16	19/32	1 1/4	1 13/16
838-209	1 1/2 x 1/2	1 5/8	7/8	1 5/16	2
838-210	1 1/2 x 3/4	1 5/8	3/4	1 5/16	2
838-211	1 1/2 x 1	1 11/16	13/16	11/16	2 1/16
838-212	1 1/2 x 1 1/4	1 11/16	5/16	1 3/8	2 1/16
838-247	2 x 1/2	1 11/16	13/16	1 3/8	2 1/2
838-248	2 x 3/4	1 11/16	15/16	1 3/8	2 1/2
838-249	2 x 1	1 11/16	5/8	1 3/8	2 1/2
838-250	2 x 1 1/4	1 13/16	15/16	1 1/2	2 9/16
838-251	2 x 1 1/2	1 13/16	3/8	1 1/2	2 9/16
838-292	2 1/2 x 2	2 5/16	3/4	2	3 1/8
838-338	3 x 2	2 5/16	1 11/32	1 29/32	3 17/32
838-339	3 x 2 1/2	2 3/8	13/16	2	3 5/8
838-420	4 x 2	2 7/16	1 1/2	2	4 1/2
838-422	4 x 3	2 21/32	7/8	2 1/4	4 9/16
838-532	6 x 4	3 15/32	2 1/8	2 31/32	6 3/4

Hex outside diameter measured across hex flats



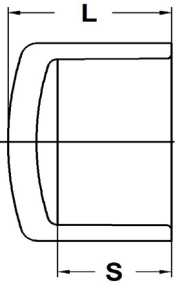
**Reducer Bushing (Flush Style)**

Part No	Size (in)	L	N	T1
839-052	3/8 x 1/4	7/8	1/4	21/32
839-072	1/2 x 1/4	1 1/8	1/2	3/4
839-073	1/2 x 3/8	1 1/8	1/2	25/32
839-098	3/4 x 1/4	1 1/8	1/2	25/32
839-099	3/4 x 3/8	1 1/8	1/2	25/32
839-101	3/4 x 1/2	1	5/16	11/16
839-128	1 x 1/4	1 1/8	9/16	25/32
839-129	1 x 3/8	1 7/16	3/4	31/32
839-130	1 x 1/2	1 7/16	0.62	15/16
839-131	1 x 3/4	1 1/8	3/8	3/4
839-166	1 1/4 x 1/2	1 11/32	0.55	7/8
839-167	1 1/4 x 3/4	1 5/16	17/32	7/8
839-168	1 1/4 x 1	1 5/16	5/16	7/8
839-209	1 1/2 x 1/2	13/32	5/8	31/32
839-210	1 1/2 x 3/4	1 7/16	5/8	1
839-211	1 1/2 x 1	1 7/16	1/4	1
839-212	1 1/2 x 1 1/4	1 7/16	13/32	1
839-247	2 x 1/2	13/32	5/8	1
839-248	2 x 3/4	1 7/16	5/8	1 1/16
839-249	2 x 1	1 7/16	15/32	1 1/16
839-250	2 x 1 1/4	1 7/16	15/32	1 1/16
839-251	2 x 1 1/2	1 1/2	15/32	1 3/32
839-292	2 1/2 x 2	1 13/16	3/4	1 9/16
839-337	3 x 1 1/2	2 1/16	31/32	1 5/8
839-338	3 x 2	2 1/32	1	1 5/8
839-339	3 x 2 1/2	2 1/16	1/2	1 5/8
839-420	4 x 2	2 1/16	1	1 11/16
839-422	4 x 3	2 1/8	1/2	1 3/4

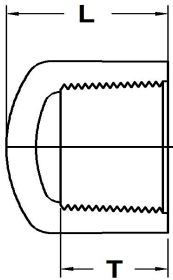


**Reducer Bushing (Flush Style)**

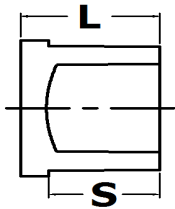
Part No	Size (in)	L	N	T1
845-249	2 x 1	1 1/2	15/32	1 1/16



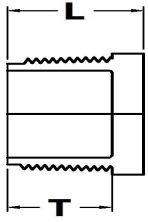
Cap			
Part No	Size (in)	L	S
847-002	¼	31/32	5/8
847-003	⅜	1	3/4
847-005	½	1 7/32	15/16
847-007	¾	1 3/8	1
847-010	1	1 5/8	1 1/8
847-012	1¼	1 13/16	1 9/32
847-015	1½	2	1 13/32
847-020	2	2 3/32	1 1/2
847-025	2½	2 11/16	1 7/8
847-030	3	2 31/32	1 31/32
847-040	4	3 1/8	2 1/2
847-060	6	4 15/16	3 1/16
847-080	8	6 9/16	4 3/8
847-100	10	8 1/2	5 1/32
847-120	12	10 7/32	6



Cap			
Part No	Size (in)	L	T
848-002	¼	15/16	5/8
848-003	⅜	31/32	17/32
848-005	½	1 3/16	13/16
848-007	¾	1 3/8	1
848-010	1	1 19/32	1 3/16
848-012	1¼	1 3/4	2 7/32
848-015	1½	2	1 3/8
848-020	2	2 1/16	1 1/2
848-025	2½	2 11/16	1 13/16
848-030	3	2 31/32	1 15/16
848-040	4	2 1/2	1 11/16



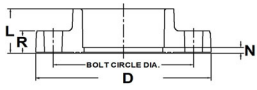
Plug			
Part No	Size (in)	L	S
849-007	¾	1 9/32	1 1/32
849-010	1	1 13/32	1 1/8
849-012	1¼	1 5/8	1 9/32
849-015	1½	1 11/16	1 3/8
849-020	2	1 29/32	1 1/2



### Plug

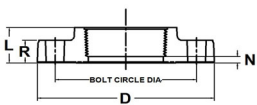
Part No	Size (in)	L	T
850-002	¼	7/8	5/8
850-003	⅜	29/32	5/8
850-005	½	1	3/4
850-007	¾	1 1/16	25/32
850-010	1	1 1/4	1
850-012	1¼	1 9/32	27/32
850-015	1½	1 3/16	7/8
850-020	2	2	1 5/8
850-025	2½	2 1/16	1 21/32
850-030	3	2 1/8	1 3/4
850-040*	4	2 5/32	1 3/4

\*Overall Length includes protruding feature on top of part



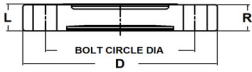
### Flange (Solid Style)

Part No	Size (in)	D	L	N	R	Bolt Circle Dia.
851-005	½	3 1/2	1	1/8	15/32	2 11/32
851-007	¾	3 29/32	1 5/32	1/8	1/2	2 3/4
851-010	1	4 9/32	1 9/32	3/16	19/32	3 3/32
851-012	1¼	4 21/32	1 13/32	3/16	5/8	3 7/16
851-015	1½	5	1 17/32	1/8	11/16	3 27/32
851-020	2	6 1/32	1 11/16	3/16	25/32	4 3/4
851-025	2½	7	2 3/32	5/16	15/16	5 1/2
851-030	3	7 1/2	2 1/8	1/4	1	6
851-040	4	9	2 1/2	1/4	1	7 7/16
851-060	6	10 31/32	3 7/16	7/16	1 5/16	9 1/2



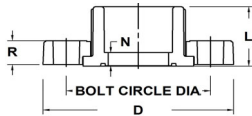
### Flange (Solid Style)

Part No	Size (in)	D	L	N	R	Bolt Circle Dia.
852-005	½	3 1/2	15/16	3/16	7/16	2 11/32
852-007	¾	3 7/8	1 1/8	5/16	1/2	2 3/4
852-010	1	4 1/4	1 3/16	3/16	9/16	3 1/8
852-012	1¼	4 5/8	1 3/8	1/4	5/8	3 15/32
852-015	1½	5	1 1/2	13/32	23/32	3 7/8
852-020	2	6 3/32	1 11/16	19/32	25/32	4 23/32
852-025	2½	7	1 7/8	3/16	7/8	5 15/32
852-030	3	7 1/2	1 7/8	13/32	1	6
852-040	4	9 3/32	2 3/8	9/16	15/16	7 7/16



**Flange**

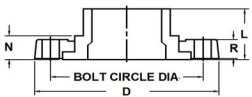
Part No	Size (in)	D	L	R	Bolt Circle Dia.
853-005	½	3 1/2	1/2	7/16	2 3/8
853-007	¾	3 7/8	1/2	7/16	2 3/4
853-010	1	4 1/4	19/32	19/32	3 1/8
853-012	1¼	4 5/8	5/8	9/16	3 1/2
853-015	1½	5	13/16	23/32	3 7/8
853-020	2	6	15/16	3/4	4 3/4
853-025	2½	7	1	29/32	5 7/16
853-030	3	7 1/2	1	7/8	6
853-040	4	9	1 3/8	1 1/8	7 1/2
853-060	6	11	1 1/2	1 3/4	9 1/2
853-080	8	13 1/2	1 5/8	1 7/16	11 3/4



**Flange (Loose Ring)**

Part No	Size (in)	D	L	N	R	Bolt Circle Dia.
854-005	½	3 1/2	1	1/8	19/32	2 3/8
854-007	¾	3 7/8	1 5/32	1/8	19/32	2 3/4
854-010	1	4 1/4	1 3/8	1/8	21/32	3 1/8
854-012	1¼	4 5/8	1 1/2	1/8	11/16	3 1/2
854-015	1½	5	1 11/16	1/4	3/4	3 7/8
854-020	2	6	1 3/4	3/16	13/16	4 3/4
854-030FT	3	7 19/32	2 1/8	3/16	1	6
854-040FT	4	9 1/16	2 1/2	1/4	1 7/32	7 7/16
854-050FT	5	10	2 7/8	1/4	1 1/4	8 1/2
854-060FT	6	10 15/16	3 9/32	1/4	1 5/16	9 1/2
854-080FT	8	13 9/16	4 1/2	1/4	1 1/2	11 3/4
854-100FT	10	16	6	7/16	1 9/16	14 3/8
854-120FT	12	19 1/32	7 17/32	9/16	1 11/16	17

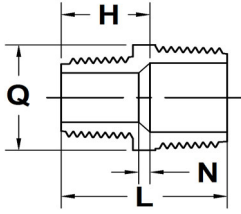
FT Represents FiberTuff Ring.



**Flange (Loose Ring)**

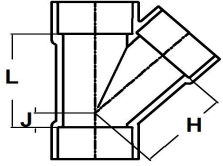
Part No	Size (in)	D	L	N	R	Bolt Circle Dia.
856-005	½	3 1/2	1 3/4	7/8	17/32	2 3/8
856-007	¾	3 7/8	1 7/8	13/16	19/32	2 3/4
856-010	1	4 1/4	2 1/8	15/16	21/32	3 1/8
856-012	1¼	4 5/8	2 9/32	31/32	11/16	3 1/2
856-015	1½	5	2 1/2	1 1/16	3/4	3 7/8
856-020	2	6	2 13/16	1 7/32	13/16	4 3/4
856-030FT	3	7 19/32	3 11/32	1 5/16	1	5 15/16
856-040FT	4	9	3 7/8	1 5/8	1 7/32	7 7/16
856-050FT	5	10	4 1/2	1 1/2	1 1/4	8 1/2
856-060FT	6	10 15/16	4 11/16	1 19/32	1 5/16	9 1/2
856-080FT	8	13 9/16	6 1/4	1 11/16	1 15/32	11 3/4
856-100FT	10	16	7 13/32	1 7/8	1 9/16	14 3/8
856-120FT	12	19	9	1 15/16	1 21/32	17 1/32

FT Represents FiberTuff Ring.



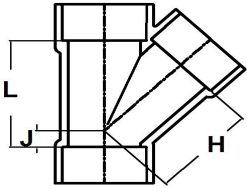
### Reducing TBE Nipple

Part No	Size (in)	L	N	H	Q
882-101	¾ x ½	1 1/2	1/8	25/32	1 1/8



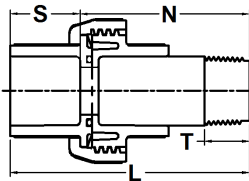
### WYE

Part No	Size (in)	L	J	H
875-020	2	3 19/32	5/8	3
875-030	3	5 23/32	1	6 21/32
875-040	4	6 9/16	1	5 3/4
875-060	6	9 1/2	1 13/32	8 1/16
875-080	8	13 9/32	2 1/32	11 1/4



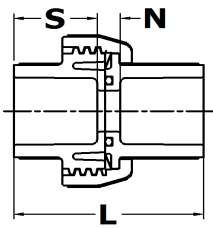
### Reducing WYE

Part No	Size (in)	L	J	H
876-420*	4 x 4 x 2	6 9/16	1	7 1/32
876-422*	4 x 4 x 3	6 9/16	1	6 1/2
876-528*	6 x 6 x 2	6 19/32	0	8 7/16
876-530*	6 x 6 x 3	6 19/32	0	7 27/32
876-532	6 x 6 x 4	6 19/32	0	7 1/8
876-578*	8 x 8 x 2	8	3/8	10 13/16
876-580*	8 x 8 x 3	8	3/8	10 1/4
876-582	8 x 8 x 4	8	3/8	9 1/2
876-585*	8 x 8 x 6	13 9/32	2 3/32	16 1/16



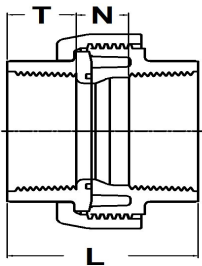
### Union (O-Ring Type)

Part No	Size (in)	L	S	N	T
896-005	½	3 1/4	15/16	2 5/16	25/32
896-007	¾	3 21/32	1 1/16	2 19/32	5/8
896-010	1	3 27/32	1 3/16	2 11/16	13/16
896-012	1¼	4 1/8	1 5/16	2 13/16	1 1/8
896-015	1½	5 9/32	1 7/16	3 27/32	1
896-020	2	5 1/16	1 19/32	3 1/2	1 1/4
896-030	3	5 1/2	2	3 1/2	1 3/32
896-168	1¼ x 1	4 7/32	1 5/16	2 29/32	15/16



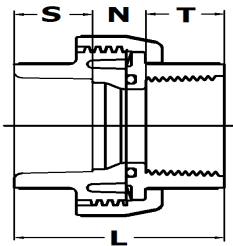
**Union (O-Ring Type)**

Part No	Size (in)	L	N	S
897-002	¼	1 5/8	3/8	5/8
897-003	⅜	1 15/16	13/32	25/32
897-005	½	2 5/32	5/16	15/16
897-007	¾	2 7/16	1/4	1 3/32
897-010	1	2 23/32	3/8	1 3/16
897-012	1¼	3	3/8	1 5/16
897-015	1½	3 1/4	3/8	1 7/16
897-020	2	3 9/16	7/16	1 19/32
897-030	3	4 7/16	15/32	2



**Union (O-Ring Type)**

Part No	Size (in)	L	N	T
898-005	½	1 15/16	1/2	23/32
898-007	¾	2	17/32	3/4
898-010	1	2 3/8	19/32	7/8
898-012	1¼	2 7/16	5/8	15/16
898-015	1½	2 17/32	11/16	15/16
898-020	2	2 29/32	15/16	1
898-030	3	4	1 1/8	1 7/16
898-040	4	4 11/16	1 5/8	1 17/32



**Union (O-Ring Type)**

Part No	Size (in)	L	N	S	T
899-005	½	2 5/32	17/32	15/16	23/32
899-007	¾	2 11/32	17/32	1 3/32	3/4
899-010	1	2 3/8	5/16	1 3/16	7/8
899-012	1¼	2 27/32	19/32	1 5/16	15/16
899-015	1½	3	11/16	1 7/16	29/32
899-020	2	3 15/32	27/32	1 19/32	1 1/32





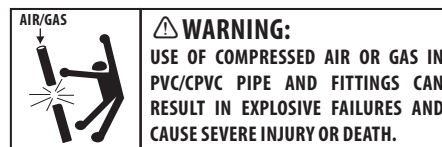
CUSTOMER SERVICE  
Phone: (800) 776-2756 | Fax: (731) 772-0835  
Email: customerservice@lascofittings.com  
www.lascofittings.com

### LIMITED WARRANTY

LASCO Fittings, Inc. products are warranted to be free from manufacturing defects in materials and workmanship. They are warranted against rot, rust, and electrolytic corrosion for a period of three years from date of installation. If LASCO products prove defective due to manufacturing defects in material or workmanship during that period, the manufacturer will provide new replacement units of the same type and size. No remedy will be granted under this warranty if LASCO products are not used strictly in accordance with LASCO's directions with respect to use and storage or if the products have been modified in any way.

THE MANUFACTURER'S LIABILITY UNDER EXPRESSED OR IMPLIED WARRANTY OR FOR ANY REASON IS LIMITED TO FURNISHING REPLACEMENT UNITS OR GRANTING A CREDIT FOR DEFECTIVE UNITS. NO LABOR EXPENSE OR CONSEQUENTIAL DAMAGES WILL BE PAID BY LASCO. THIS WARRANTY IS IN LIEU OF ALL OTHER GUARANTEES AND WARRANTIES, EXPRESSED OR IMPLIED, INCLUDING BUT NOT LIMITED TO, WARRANTIES OF MERCHANTABILITY AND FITNESS FOR PURPOSE, EXCEPT FOR ANY WARRANTIES IMPLIED BY LAW FOR NONCOMMERCIAL CONSUMERS. ANY SUCH WARRANTIES ARE LIMITED TO THE DURATION OF THIS WRITTEN WARRANTY.

DO NOT USE LASCO FITTINGS FOR COMPRESSED AIR OR GASES.  
DO NOT TEST PVC PIPING SYSTEMS WITH COMPRESSED AIR OR GASES.  
DO NOT USE FITTINGS WITH LIQUIDS NOT RECOMMENDED BY LASCO.  
MODIFICATIONS OF FITTINGS VOIDS THE WARRANTY.



### STANDARDS AND SPECIFICATIONS

- ASTM D-1784 – Rigid Poly (Vinyl Chloride) (PVC) Compounds and Chlorinated Poly (Vinyl Chloride) (CPVC) Compounds.
- ASTM D-2464 – Threaded Poly (Vinyl Chloride) (PVC) Plastic Pipe Fittings, Schedule 80.
- ASTM D-2467 – Socket Type Poly (Vinyl Chloride) (PVC) Plastic Pipe Fittings, Schedule 80.
- ASTM F-1970 – Standard Specification for Special Engineered Fittings, Appurtenances or Valves for use in Poly (Vinyl Chloride) (PVC) or Chlorinated Poly (Vinyl Chloride) (CPVC) Systems.
- MATERIAL – LASCO Schedule 80 Fittings are produced from PVC Type 1, Cell Classification 12454- B.  
- O-Rings are produced from a fluorocarbon elastomer (VITON).
- LISTINGS – NSF (National Sanitation Foundation) for potable water services.

### Standard Terms and Conditions of Sale

1. Terms: 2% 35 days, net 45 days.
2. Freight: FOB LASCO warehouses. Prepaid on orders for products only totaling \$1650 net for one shipment to single destination within the contiguous United States.
3. Minimum Order: \$100 net. Smaller orders billed at this minimum charge.
4. Claims for shipping errors must be made within 15 days to LASCO. Claims for damage or shortages should be directed promptly to the common carrier by the consignee.
5. Returns will be accepted only by prior authorization and if shipped freight prepaid. Returned merchandise subject to a 25% handling/restocking charge.
6. Pricing is subject to change without prior notice. However, prior notification will be given in the event of price changes in the period between order placement and scheduled shipment.
7. Offer to sell is not implied by possession of this or other LASCO price lists.

