

**LASCO**

**SINK REPAIR**



<b>Lasco # Blish Mize SKU</b>	<b>Description</b>
<b>0-2053 5960208</b>	Lavatory Pop Up Stopper Only, For Price Pfister & Other Brands, OEM #972-691, Chrome Finish Top & Plastic Body, Replacement. Carded. <b>052151000156</b>
<b>0-3039 5960901</b>	Lavatory Pop Up Stopper Only, Fits Most Delta Units, OEM #RP5648, Chrome Finish Top & Plastic Body, Replacement. Carded. <b>052151056139</b>
<b>0-3041 5960919</b>	Lavatory Pop Up Stopper Only, Fits Most Delta Units, OEM #RP648, Chrome Finish Top & Plastic Body, Replacement. Carded. <b>052151000453</b>
<b>02-2050D 5968797</b>	Flanged Plastic Sink Connection Washer, 1-5/16" ID x 1-23/32" OD, Use On 1-1/2" PVC Flanged Tailpiece Connection, Kitchen Sink Basket Strainer Assembly, 100/Bag. Bulk. <b>052151237743</b>
<b>02-2051 5960331</b>	Plastic, 1-1/2" Flanged Tailpiece Washers For Plastic Tubular, 2-Pack. Carded. <b>052151020260</b>
<b>02-2053 5960349</b>	Rubber, 1-1/2" Cloth Inserted Tailpiece Washers For Metal Tubular, 2-Pack. Carded. <b>052151063151</b>
<b>02-2067 5960356</b>	Rubber & Fiber, Kitchen Sink Basket Strainer 4" Washers, One Each. Carded. <b>052151063267</b>
<b>02-2250D 5968813</b>	Rubber Slip Joint Washer, Standard 1-1/4", 100/Bag. Bulk. <b>052151237767</b>
<b>02-2251 5960372</b>	Rubber, 1-1/4", Slip Joint Washers For Metal Tubular, 2 Piece. Carded. <b>052151020345</b>

**Picture**



<b>Lasco # Blish Mize SKU</b>	<b>Description</b>
<b>02-2254D 5968821</b>	Rubber Slip Joint Washer, Standard 1-1/2", 100/Bag. Bulk. <b>052151237774</b>
<b>02-2255 5960380</b>	Rubber, 1-1/2", Slip Joint Washers For Metal Tubular, 2-Pack. Carded. <b>052151020338</b>
<b>02-2267 5960398</b>	Rubber, 1-1/2" x 1-1/4", Reducing Slip Joint Washers For Metal Tubular, 2-Pack. Carded. <b>052151020352</b>
<b>02-2281 5960406</b>	Plastic/Polyethylene, 1-1/4" Beveled Slip Joint Washers For Plastic Tubular, 2-Pack. Carded. <b>052151063861</b>
<b>02-2282D 5968474</b>	Plastic Beveled Slip Joint Washer, Standard 1-1/2", 100/Bag. Bulk. <b>052151237934</b>
<b>02-2283 5960414</b>	Plastic/Polyethylene, 1-1/2" Beveled Slip Joint Washers For Plastic Tubular, 2-Pack. Carded. <b>052151020284</b>
<b>02-2286D 5968805</b>	Plastic Beveled Slip Joint Washer, Reducing 1-1/2" x 1-1/4", 100/Bag. Bulk. <b>052151237699</b>
<b>02-2287 5960422</b>	Plastic/Polyethylene, 1-1/2" x 1-1/4" Beveled Reducing Slip Joint Washers For Plastic Tubular, 2-Pack. Carded. <b>052151063915</b>
<b>02-2289 5960430</b>	Plastic & Rubber, Assorted Sizes, Slip Joint Washers For Tubular, 5-Pack. Carded. <b>052151020765</b>

**Picture**



<b>Lasco # Blish Mize SKU</b>	<b>Description</b>
<b>02-2291 5960448</b>	Vinyl, 1-1/4" Solution Silicone Slip Joint Washers For Plastic & Metal Tubular, With Passion Grip, 2-Pack. Carded. <i>052151280619</i>
<b>02-2293 5960455</b>	Vinyl, 1-1/2" Solution Silicone Slip Joint Washers For Plastic & Metal Tubular, With Passion Grip, 2-Pack. Carded. <i>052151280626</i>
<b>02-2295 5960463</b>	Vinyl, 1-1/2" Solution Silicone Slip Flanged Tailpiece Washers For Plastic & Metal Tubular, With Passion Grip, 2-Pack. Carded. <i>052151280633</i>
<b>02-2297 5960471</b>	Vinyl, 1-1/2" x 1-1/4" Solution Silicone Slip Joint Reducing Washers For Plastic & Metal Tubular, With Passion Grip, 2-Pack. Carded. <i>052151280640</i>
<b>02-3081 5960562</b>	Rubber, Mack Gasket, 2" OD x 1-1/4" ID, For Lavatory P.O., C.O., & Pop Up Drains. Carded. <i>052151020802</i>
<b>02-3083 5960570</b>	Rubber, Mack Gasket, 2-3/8" OD x 1-1/4" ID, For Lavatory P.O., C.O., & Pop Up Drains. Carded. <i>052151020819</i>
<b>02-3201 5960620</b>	White Rubber, Hollow Stopper For 7/8" To 1" Drain Openings. Carded. <i>052151020871</i>
<b>02-3203 5960638</b>	White Rubber, Hollow Stopper For 1-1/8" To 1" Drain Openings. Carded. <i>052151020888</i>
<b>02-3205 5960646</b>	White Rubber, Hollow Stopper For 1-1/4" To 1-1/8" Drain Openings. Carded. <i>052151020895</i>

**Picture**



<b>Lasco # Blish Mize SKU</b>	<b>Description</b>
<b>02-3207 5960653</b>	White Rubber, Hollow Stopper For 1-3/8" To 1-1/4" Drain Openings. Carded. <i>052151020420</i>
<b>02-3209 5960661</b>	White Rubber, Hollow Stopper For 1-1/2" To 1-3/8" Drain Openings. Carded. <i>052151020277</i>
<b>02-3211 5960679</b>	White Rubber, Hollow Stopper For 1-5/8" To 1-1/2" Drain Openings. Carded. <i>052151020901</i>
<b>02-3213 5960687</b>	White Rubber, Hollow Stopper For 1-3/4" To 1-5/8" Drain Openings. Carded. <i>052151020918</i>
<b>02-3231 5960695</b>	White Rubber Stopper For Lavatory, Fits 1" To 1-3/8" Drain Openings. Carded. <i>052151020949</i>
<b>02-3233 5960703</b>	White Rubber Stopper For Bath Tub Drain, Fits 1-1/2" To 2" Drain Openings. Carded. <i>052151020956</i>
<b>02-3311 5960737</b>	White Rubber, Flat Suction Type Sink Stopper, 4-3/4" Diameter. Carded. <i>052151020963</i>
<b>02-3453 5960745</b>	Chrome Bead Chain With Ring & Coupling For Stoppers, 15" Long. Carded. <i>052151020970</i>
<b>02-3751 5960752</b>	Black Rubber Boot, With Clamps, For Dishwasher To Disposal Or Dishwasher To Branch Tailpiece Drain Hose Connection, Brass Or Plastic. Carded. <i>052151020376</i>

**Picture**



<b>Lasco # Blish Mize SKU</b>	<b>Description</b>
<b>02-4011 5960760</b>	Black Rubber, Garbage Disposer Splash Guard, Push & Snaps Into Place, Fits Most Units. Carded. <b>052151020369</b>
<b>02-4013 5960778</b>	White Rubber, Garbage Disposer Replacement Stopper, 4-1/2", Universal Fits Most. Carded. <b>052151020987</b>
<b>02-4021 5960786</b>	White Plastic Disposal Sink Strainer, With Holes & Lift Handle, Fits Most. Carded. <b>052151020994</b>
<b>02-5004 5965371</b>	Plunger Beehive Style With 20" Wood Handle, Bottom Can Be Pulled Out For Toilet Or Pushed-In For Sink Or Tub Drain. Carded. <b>052151066749</b>
<b>02-5032 5965389</b>	Plunger Standard Red 5-3/4" With 20" Wood Handle For Clogged Pipes & Drains. Carded. <b>052151066763</b>
<b>03-1031 5967500</b>	Kitchen Duo Sink Basket Strainer Assembly, Fits 3-1/2" Drain Opening, EZ On Style, Three Bolt Installation, Chrome Plated Finish. Carded. <b>052151282422</b>
<b>03-1039 5960984</b>	Kitchen Sink Basket Strainer Assembly For 3-1/2" Drain Opening, Extra Heavy Duty, Chrome Plated Brass Body, Kohler Style, 1-1/2" Connection. Carded. <b>052151293862</b>
<b>03-1050 5965397</b>	Chrome Plated, Stainless Steel Body, Complete Kitchen Sink Basket Strainer Assembly, 4" Import. Boxed. <b>052151530837</b>
<b>03-1051 5960992</b>	Kitchen Sink Basket Strainer Assembly For 3-1/2" OD Drain Opening, Chrome Plated, Stainless Steel Body, Lock Nut & Washer Style Installation, 1-1/2" Connection, Washers & Nuts. Carded. <b>052151030023</b>

**Picture**



<b>Lasco # Blish Mize SKU</b>	<b>Description</b>
<b>03-1053 5961008</b>	Kitchen Sink Basket Strainer Only, Post Style, Chrome Plated, Stainless Steel, Fit All, Replacement Strainer for 03-1051. Carded. <b>052151030252</b>
<b>03-1059OB 5968698</b>	Heavy Duty, PVC Body, Kitchen Sink Basket Strainer Assembly, Oil Rubbed Bronze, Fits Standard 3-1/2" Sink Opening. Carded. <b>052151212047</b>
<b>03-1059SN 5968706</b>	Heavy Duty, PVC Body, Kitchen Sink Basket Strainer Assembly, Satin Nickel, Fits Standard 3-1/2" Sink Opening. Carded. <b>052151212054</b>
<b>03-1060P 5967518</b>	Plastic Body With Chrome Plated Finish, Kitchen Duo Sink Basket Strainer Assembly, For 3-1/2" Drains. Power-Pak. <b>052151225474</b>
<b>03-1061 5961016</b>	Kitchen Sink Basket Strainer Assembly For 3-1/2" Drain Opening, Chrome Plated Finish With White Plastic Body, Post & Rubber Stopper, Lock Nut & Washer, 1-1/2" Connection. Carded. <b>052151067036</b>
<b>03-1073 5961024</b>	Kitchen Sink Strainer Assembly For 3-1/2" OD Drain Opening, Chrome Plated, Stainless Steel Body, Flat Top Style Kitchen Strainer, Includes Locknut & Washer, 1-1/2" Connection. Carded. <b>052151030542</b>
<b>03-1101 5961032</b>	Junior Duo Bar Or Laundry Sink Strainer For 2" Drain Opening, Chrome Plated, Stainless Steel, Includes Locknut & Washer, 1-1/2" Connection. Carded. <b>052151030559</b>
<b>03-1129 5961040</b>	Kitchen Sink Basket Strainer For 3-1/2" OD Drain Opening, Small Threads Spin Type Basket, Chrome Plated, Stainless Steel, Includes Locknut & Washer, 1-1/2" Connection. Carded. <b>052151030566</b>
<b>03-1151 5961057</b>	Kitchen Sink Basket Strainer With Long Shank For Deep Mount, For 3-1/2" OD Drain Opening, Chrome Plated, Stainless Steel, Includes Locknut & Washer. Carded. <b>052151282200</b>

**Picture**



<b>Lasco # Blish Mize SKU</b>	<b>Description</b>
<b>03-1301 5961081</b>	Kitchen Sink Basket Strainer Only, 1-1/2", Universal Fit All Style, White Plastic, Fits Many Manufacturers, Replacement Strainer for 03-1061. Carded. <i>052151067623</i>
<b>03-1303 5961099</b>	Kitchen Sink Basket Strainer Only, Fit All Style, Chrome Plated, Stainless Steel, Fits Many Manufacturers, Replacement Strainer. Carded. <i>052151030245</i>
<b>03-1313 5961107</b>	1" Diameter, Chrome Plated, Stainless Steel, Universal Fit, Replacement Crumb Cup Strainer. Carded. <i>052151030061</i>
<b>03-1315 5961115</b>	1-1/2" Diameter, Chrome Plated, Stainless Steel, Crumb Cup Strainer, With Out Lift Center Post. Carded. <i>052151030344</i>
<b>03-1317 5961123</b>	1-1/2" Diameter, Chrome Plated, Stainless Steel, Crumb Cup Strainer, With Center Lift Post. Carded. <i>052151030603</i>
<b>03-1319 5961131</b>	1-1/2" Diameter, Chrome Plated, Stainless Steel, Shallow Laundry/ Tub Crumb Cup Strainer. Carded. <i>052151030160</i>
<b>03-1331 5961149</b>	1-5/8" Diameter, Chrome Plated, Stainless Steel, 3-Prong, Snap-In Drain Strainer. Carded. <i>052151030610</i>
<b>03-1333 5961156</b>	1-7/8" Diameter, Chrome Plated, Stainless Steel, 3-Prong, Snap-In Drain Strainer. Carded. <i>052151030627</i>
<b>03-1339 5961164</b>	Price Pfister, Chrome Plated, Stainless Steel, 3-Prong, Snap-In Shower/Tub Drain Strainer. Carded. <i>052151067746</i>

**Picture**

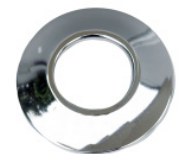


**Lasco #  
Blish Mize SKU**

**Description**

<b>03-1380 5961206</b>	Stainless Steel Mesh Kitchen Strainer With Chrome Ring, Keeps Drains Clean & Free Flowing, Great For Cleaning Jewelry, Keeps It From Going Down Drain, Easy To Use, Fits Most Kitchen Sink Drains. Carded. <i>052151295194</i>
<b>03-1386 5961230</b>	Stainless Steel Mesh Lavatory Strainer With Chrome Ring, Keeps Drains Clean & Free Flowing, Great For Cleaning Jewelry, Keeps It From Going Down Drain, Easy To Use, Fits Most Lavatory Drains. Carded. <i>052151295224</i>
<b>03-1445 5961271</b>	Stainless Steel, Chrome Plated, Sink Hole Cover, 2" Diameter, Includes Wing Nut, Use To Cover Extra Hole In Sink, Fits Most Standard Sinks. Carded. <i>052151068149</i>
<b>03-1447 5961289</b>	Stainless Steel, Chrome Plated, Sink Hole Cover, 1-3/4" Diameter, Includes Wing Nut, Use To Cover Extra Hole In Sink, Fits Most Standard Sinks. Carded. <i>052151030184</i>
<b>03-1453 5961297</b>	Stainless Steel, Chrome Plated, Snap-In Sink Hole Cover, 1-1/2" OD, Fits Most Standard Sinks. Carded. <i>052151030696</i>
<b>03-1531 5961305</b>	Sure Grip, Bright Chrome Plated, Shallow Flange, Fits 3/8" Iron Pipe. Carded. <i>052151030702</i>
<b>03-1533 5961313</b>	Sure Grip, Bright Chrome Plated, Shallow Flange, Fits 1/2" Iron Pipe Or 3/4" OD Tube. Carded. <i>052151030177</i>
<b>03-1535 5961321</b>	Sure Grip, Bright Chrome Plated, Shallow Flange, Fits 3/4" Iron Pipe. Carded. <i>052151030719</i>
<b>03-1537 5961339</b>	Sure Grip, Bright Chrome Plated, Shallow Flange, Fits 1" Iron Pipe. Carded. <i>052151030726</i>

**Picture**



<b>Lasco # Blish Mize SKU</b>	<b>Description</b>
<b>03-1541 5967526</b>	Sure Grip Beauty Ring, Chrome Plated Shallow Flange, Fits 1-1/2" Iron Pipe. Carded. <i>052151030740</i>
<b>03-1551 5961347</b>	Chrome Plated Brass, Floor & Ceiling, Split Flange, Fits 3/8" Iron Pipe Or 1/2" Inside Diameter Copper. Carded. <i>052151068453</i>
<b>03-1553 5961354</b>	Chrome Plated Brass, Floor & Ceiling, Split Flange, Fits 1/2" Iron Pipe Or 3/4" Inside Diameter Copper. Carded. <i>052151030764</i>
<b>03-1555 5961362</b>	Chrome Plated Brass, Floor & Ceiling, Split Flange, Fits 3/4" Iron Pipe. Carded. <i>052151030771</i>
<b>03-1559 5967534</b>	Chrome Plated Beauty Ring, Floor & Ceiling, Split Flange, Fits 1-1/4" Iron Pipe. Carded. <i>052151068514</i>
<b>03-1561 5967542</b>	Chrome Plated Beauty Ring, Floor & Ceiling, Split Flange, Fits 1-1/2" Iron Pipe. Carded. <i>052151068538</i>
<b>03-1601 5961370</b>	Sure Grip, Bright Chrome Plated, Shallow Flange, Fits 1/2" Inside Diameter Copper Pipe. Carded. <i>052151068712</i>
<b>03-1603 5961388</b>	Sure Grip, Bright Chrome Plated, Shallow Flange, Fits 3/4" Inside Diameter Copper Pipe. Carded. <i>052151068736</i>
<b>03-1815 5961420</b>	1/2" Female Pipe Thread x 3/8" OD Tube, Slip Joint Nut, Used for Connecting Old Style Metal Faucet Supply Tubes, Cone Washer & Friction Ring Included. Carded. <i>052151031136</i>



<b>Lasco # Blish Mize SKU</b>	<b>Description</b>
<b>03-1819 5961438</b>	1-1/4" OD Tube, Chrome Plated, Slip Joint Nut With Washer, 1 Piece. Carded. <i>052151030337</i>
<b>03-1827 5961446</b>	1-1/2" OD x 1-1/4" OD, Chrome Plated, Reducing Slip Joint Nut With Washer, 1 Piece. Carded. <i>052151031143</i>
<b>03-1832 5968573</b>	1-1/2" OD x 1-1/2" OD, Chrome Plated, Die Cast Slip Joint Nut. Bulk. <i>052151530080</i>
<b>03-1835 5961453</b>	1-1/2" OD Tube, Chrome Plated, Slip Joint Nut With Washer, 1 Piece. Carded. <i>052151030146</i>
<b>03-1844 5968490</b>	1-1/2" x 1-1/2" White Plastic Slip Joint Nut & 2 Polyethylene Washers. Carded. <i>052151069979</i>
<b>03-1845 5961479</b>	1-1/2" & 1-1/2" OD x 1-1/4" White Plastic Slip Joint Nut & 2 Polyethylene Reducing Washers. Carded. <i>052151030153</i>
<b>03-1847 5965405</b>	1/2" Female Pipe Thread x 3/8" OD Tube, Plastic Slip Joint Nut With Wings. Used for Connecting Old Style Metal Faucet Supply Tubes, Cone Washer & Friction Ring Included. Carded. <i>052151069993</i>
<b>03-1849 5961487</b>	1-1/4" OD Tube, White Plastic PVC Slip Joint Nut With Washer. Carded. <i>052151218933</i>
<b>03-1903 5967559</b>	1/2" Female Pipe Thread, Die Cast, 1/2" Metal Jam Nuts, 1 Pair. Carded. <i>052151070227</i>



<b>Lasco # Blish Mize SKU</b>	<b>Description</b>
<b>03-1911 5961495</b>	1/2" Female Pipe Thread, Die Cast, 1/2" Faucet Lock Nut Kit, Includes 1/2" Faucet Mounting Nuts & Flat Rosettes. Carded. <i>052151030931</i>
<b>03-1959 5961503</b>	4" Die Cast Kitchen Sink Basket Strainer Lock Nut Kit, With Plastic & Rubber Friction Ring Washers. Carded. <i>052151070371</i>
<b>03-2003 5961511</b>	1/2" Female Iron Pipe Thread, Plastic Winged Jam Nuts, For Faucet Installation, 2 Pieces. Carded. <i>052151267443</i>
<b>03-2561 5961545</b>	1-1/4" OD x 6", Chrome Plated Brass, 22 Gauge, Lavatory Drain Slip Joint Extension Tube With Nut & Washer. Carded. <i>052151070647</i>
<b>03-2567 5961552</b>	1-1/4" OD x 12", Chrome Plated Brass, 22 Gauge, Lavatory Drain Slip Joint Extension Tube With Nut & Washer. Carded. <i>052151070685</i>
<b>03-2571 5961560</b>	1-1/2" OD x 6", Chrome Plated Brass, 22 Gauge, Kitchen Drain Slip Joint Extension Tube With Nut & Washer. Carded. <i>052151070708</i>
<b>03-2577 5961578</b>	1-1/2" OD x 12", Chrome Plated Brass, 22 Gauge, Kitchen Drain Slip Joint Extension Tube With Nut & Washer. Carded. <i>052151070760</i>
<b>03-2723 5961586</b>	1-1/2" OD x 6", Chrome Plated Brass, 22 Gauge, Flanged Sink Tailpiece. Carded. <i>052151070975</i>
<b>03-2729 5961594</b>	1-1/2" OD x 12", Chrome Plated Brass, 22 Gauge, Flanged Sink Tailpiece. Carded. <i>052151071033</i>

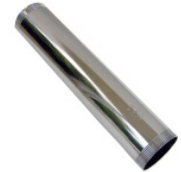
**Picture**



**Lasco #  
Blish Mize SKU**

<b>Description</b>
1-1/2" OD x 8", Chrome Plated Metal Tubular, 22 Gauge, Dishwasher Direct Connect Disposal Flanged Branch Tailpiece, 5/8" Outlet, Kitchen/Laundry/Bathroom Sinks, When Disposal Is Not Used. Carded. <b>03-2843 5967567</b> <i>052151071248</i>
1-1/2" OD x 14", Chrome Plated Metal Tubular, 22 Gauge, Direct Connect, Brass Slip Joint SAT Waste Arm. Used In Kitchen, Laundry, Or Bathroom Sinks. Carded. <b>03-2947 5967575</b> <i>052151030306</i>
1-1/4" OD x 6", Chrome Plated Brass, 20 Gauge, Threaded Lavatory Drain Tailpiece. Carded. <b>03-3103 5961602</b> <i>052151071774</i>
1-1/4" OD x 12", Chrome Plated Brass, 20 Gauge, Threaded Lavatory Drain Tailpiece. Carded. <b>03-3107 5961610</b> <i>052151071811</i>
1-1/2" OD x 6", Chrome Plated Brass, 20 Gauge, Threaded Kitchen Drain Tailpiece. Carded. <b>03-3133 5961628</b> <i>052151071873</i>
1-1/4", Chrome Plated Metal Tubular Brass, 22 Gauge, Slip Joint "S" Trap, Use When Bathroom/Lavatory Drain Connection Is Through Floor. Carded. <b>03-3251 5967583</b> <i>052151219008</i>
1-1/2", Chrome Plated Metal Tubular Brass, 22 Gauge, Slip Joint "S" Trap, Use When Kitchen, Laundry, Or Bathroom Sink Drain Connection Is Through Floor. Carded. <b>03-3253 5967591</b> <i>052151219015</i>
1-1/4" OD x 6-1/2", Chrome Plated Brass, 22 Gauge, Lavatory Drain Wall Bend, For P-Trap Elbow Tube. Carded. <b>03-3459 5961636</b> <i>052151072269</i>
1-1/2" OD, Chrome Plated Brass, 22 Gauge, Kitchen Wall Drain P-Trap. Carded. <b>03-3501 5961644</b> <i>052151030986</i>

**Picture**





<b>Lasco # Blish Mize SKU</b>	<b>Description</b>
<b>03-3505 5961651</b>	1-1/4" OD, Chrome Plated Brass, 22 Gauge, Lavatory Wall Drain P-Trap. Carded. <i>052151030993</i>
<b>03-3507 5961669</b>	1-1/2" OD, Chrome Plated Brass, 22 Gauge, Kitchen Wall Drain, Captive Nut, J-Bend, For Connection To 1-1/2" Cast Elbow. Carded. <i>052151072368</i>
<b>03-3511 5961677</b>	1-1/2" OD x 7", Chrome Plated Brass, 22 Gauge, Kitchen Wall Drain P-Trap Elbow Tube. Carded. <i>052151072399</i>
<b>03-3513 5961685</b>	1-1/2" OD, Chrome Plated Brass, 22 Gauge, Kitchen Wall Drain J-Bend, Project Gauge Includes 2 Each Slip Nuts & Washers. Carded. <i>052151072412</i>
<b>03-3517 5961693</b>	1-1/4" OD, Chrome Plated Brass, 22 Gauge, Lavatory Wall Drain J-Bend, Project Gauge Includes 2 Each Slip Nuts & Washers. Carded. <i>052151072450</i>
<b>03-4107 5961701</b>	White PVC Plastic Tubular, 1-1/2" OD x 16" Telescopic/Adjustable, End Outlet, Disposal Drain Installation Kit, Includes Nuts & Washers. Carded. <i>052151258885</i>
<b>03-4200P 5965413</b>	White PVC Plastic Tubular, 1-1/2" OD x 16", End Outlet Drain Assembly For Kitchen Sink, Includes Nuts & Washers. Bagged. <i>052151225610</i>
<b>03-4201 5961719</b>	White PVC Plastic Tubular, 1-1/2" OD x 16", 2 Bowl, End Outlet Drain Assembly For Kitchen Sink, Slip Joint Tailpiece Or Direct Connect To Strainers, Baffled Tee, Includes Flanged Sink Tailpiece & 3 Each Nuts & Washers. Carded. <i>052151030290</i>
<b>03-4207 5961727</b>	White PVC Plastic Tubular, 1-1/2" OD, Disposal Drain Assembly Kit With Slip Joint End Outlet Baffle Tee, 12" Flanged Tailpiece, Nuts & Washers. Carded. <i>052151073006</i>

**Picture**



**Lasco #  
Blish Mize SKU**

**Description**

<b>03-4208P 5967609</b>	White PVC Plastic Tubular, 1-1/2" OD x 16", Center Outlet Drain Waste Assembly Slip Joint Drain Connection, For Kitchen, Laundry, Or Bathroom Sinks. Poly Bagged. <i>052151225634</i>
<b>03-4209 5961735</b>	White PVC Plastic Tubular, 1-1/2" OD x 16", 2 Bowl, End Outlet Drain Assembly For Kitchen Sink, Slip Joint Tailpiece Or Direct Connect To Strainers, Baffled Tee, Includes 2 Flanged Sink Tailpiece & 4 Each Nuts & Washers. Carded. <i>052151073037</i>
<b>03-4210P 5965421</b>	White PVC Plastic Tubular, 1-1/4" OD, P-Trap For Lavatory Drain, Slip Joint To 1-1/4" OD Inlet Tube, Includes 2 Nuts & Washers. Bagged. <i>052151225641</i>
<b>03-4211 5961743</b>	White PVC Plastic Tubular, 1-1/4" OD, P-Trap For Lavatory Drain, Slip Joint To 1-1/4" OD Inlet Tube, Includes 2 Nuts & Washers. Carded. <i>052151073068</i>
<b>03-4212 5965439</b>	White PVC Plastic Tubular, 1-1/2" OD, P-Trap For Lavatory/Kitchen Drain Slip Joint To 1-1/4" OD Or 1-1/2" OD Inlet Tube, Includes 2 Nuts & Washers & Marvel Adapter. Bulk. <i>052151073075</i>
<b>03-4212P 5965439</b>	White PVC Plastic Tubular, 1-1/2" OD, P-Trap For Lavatory/Kitchen Drain Slip Joint To 1-1/4" OD Or 1-1/2" OD Inlet Tube, Includes 2 Nuts & Washers & Marvel Adapter. Bagged. <i>052151225658</i>
<b>03-4213 5961750</b>	White PVC Plastic Tubular, 1-1/2" OD, P-Trap For Lavatory/Kitchen Drain Slip Joint To 1-1/4" OD Or 1-1/2" OD Inlet Tube, Includes 2 Nuts & Washer. Carded. <i>052151030320</i>
<b>03-4215 5961768</b>	White PVC Plastic Tubular, 1-1/2" OD x 16" 2 Bowl, End Outlet Drain Assembly For Kitchen Sink, Telescopic/Adjustable, Baffled Tee, Includes Flanged Sink Tailpiece & 3 Each Nuts & Washers. Carded. <i>052151257796</i>
<b>03-4217 5961776</b>	White PVC Plastic Tubular, 1-1/4" OD x 7", P-Trap Wall Drain Elbow. Carded. <i>052151218940</i>

**Picture**



<b>Lasco # Blish Mize SKU</b>	<b>Description</b>
<b>03-4219 5961784</b>	White PVC Plastic Tubular, 1-1/2" OD x 7", P-Trap Wall Drain Elbow. Carded. <i>052151073082</i>
<b>03-4221 5961792</b>	White PVC Plastic Tubular, 1-1/2" OD, J-Bend, Lavatory/Kitchen Slip Joint To 1-1/4" OD Or 1-1/2" OD Tube, Includes 2 Nuts & Washers. Carded. <i>052151073129</i>
<b>03-4223 5961800</b>	White PVC Plastic Tubular, 1-1/4" OD, J-Bend, Lavatory Slip Joint To Inlet 1-1/4" OD Or 1-1/4" OD Outlet Tube, Includes 2 Nuts & Washers. Carded. <i>052151218957</i>
<b>03-4225 5961818</b>	White PVC Plastic Tubular, 1-1/2" OD, Flexible/Expandable J-Bend, Extends From 3-1/2" To 6", Slip Joint To 1-1/4" OD Or 1-1/2" OD Tube, Includes Nuts & Poly Washers. Carded. <i>052151073143</i>
<b>03-4227 5961826</b>	White PVC Plastic Tubular, 1-1/2" OD, One Side Reverse Nut, J-Bend, Inlet Slip Joint To 1-1/4" OD Or 1-1/2" OD Outlet Tube, 1-1/2" Direct Connect, Includes 2 Nuts & Washers. Carded. <i>052151256577</i>
<b>03-4229 5961834</b>	White PVC Plastic Tubular, 1-1/2" OD, Lavatory/Kitchen Wall Drain Trap J-Bend, Inlet Slip Joint To 1-1/4" OD Or 1-1/2" OD Outlet Tube, With Elbow That Glues To 1-1/2" Schedule 40 PVC, Includes 2 Nuts & Washers. Carded. <i>052151073167</i>
<b>03-4231 5961842</b>	White PVC Plastic Tubular, 1-1/2" OD, Lavatory/Kitchen Wall Drain Repair Trap, Inlet Slip Joint To 1-1/4" OD Or 1-1/2" OD Outlet Tube, With LA Style Elbow, Includes 3 Nuts & Washers. Carded. <i>052151073198</i>
<b>03-4235 5961859</b>	White PVC Plastic Tubular, 1-1/2" OD, Complete P-Trap, With Flexible/Expandable J Bend, Inlet Slip Joint To 1-1/4" OD Or 1-1/2" OD Outlet Tube, Includes 2 Nuts & Washers. Carded. <i>052151315939</i>
<b>03-4245 5961867</b>	White PVC Plastic Tubular, 1-1/2" OD x 15" Slip Joint Connection, Waste Elbow Arm. Carded. <i>052151030283</i>



<b>Lasco # Blish Mize SKU</b>	<b>Description</b>
<b>03-4249 5961875</b>	White PVC Plastic Tubular, 1-1/2" OD x 7" Flanged, Long Waste Elbow Arm. Carded. <i>052151073310</i>
<b>03-4251 5961883</b>	White PVC Plastic Tubular, 1-1/2" OD x 1-1/4" OD, Bell Type Drain Reducing Adapter. Carded. <i>052151073327</i>
<b>03-4253 5961891</b>	White PVC Plastic Tubular, 1-1/2" OD, Slip Joint Drain Pipe Adapter, Connects 1-1/2" Schedule 40 PVC Stub Out, Solvent Weld To 1-1/2" OD Slip Joint Or Solvent Weld. Carded. <i>052151073358</i>
<b>03-4259 5961909</b>	White PVC Plastic Tubular, 1-1/2" OD x 15" Flanged, Long Waste Elbow Arm. Carded. <i>052151308610</i>
<b>03-4261 5961917</b>	White PVC Plastic Tubular, 1-1/2" OD Or 1-1/4" OD, Slip Joint 90° Elbow, Lavatory/Kitchen Drain Elbow, Connects Both Ends, Includes 2 Nuts & Washers. Carded. <i>052151073389</i>
<b>03-4267 5961925</b>	White PVC Plastic Tubular, 1-1/2" OD Or 1-1/4" OD, Slip Joint 45° Elbow, Lavatory/Kitchen Drain Elbow, Connects Both Ends, Includes 2 Nuts & Washers. Carded. <i>052151073419</i>
<b>03-4271 5961933</b>	White PVC Plastic Tubular, 1-1/2" OD Or 1-1/4" OD, Slip Joint x 3-1/2", Lavatory/Kitchen Drain Coupling. Carded. <i>052151073440</i>
<b>03-4277 5961941</b>	White PVC Plastic Tubular, 1-1/2" OD Or 1-1/4" OD, Slip Joint Tee, Lavatory/Kitchen Drain Tee, Connects All 3 Ends, Includes 3 Nuts & Washers. Carded. <i>052151073471</i>
<b>03-4281 5961958</b>	White PVC Plastic Tubular, 1-1/2" OD Tube x 7" Slip Joint Connection Tee, Lavatory/Kitchen Drain Tee With Tailpiece, Baffled, Connects All 3 Ends, Includes 2 Nuts & Washers. Carded. <i>052151073501</i>



<b>Lasco # Blish Mize SKU</b>	<b>Description</b>
<b>03-4291 5961966</b>	White PVC Plastic Tubular, 1-1/2" OD Tube x 1-1/2" OD Tube, Slip Joint Connection Tee, Lavatory/Kitchen Drain Tee With Tailpiece, Baffled For Center Outlet, Connects All 3 Ends, Includes 2 Nuts & Washers. Carded. <b>052151073556</b>
<b>03-4299 5967617</b>	White PVC Plastic Tubular, 1-1/2" OD Tube x 12" Flanged Drain Extension Tailpiece. Carded. <b>052151240125</b>
<b>03-4301 5961974</b>	White PVC Plastic Tubular, 1-1/2" OD x 4" Flanged Kitchen Drain Tailpiece. Carded. <b>052151073570</b>
<b>03-4303 5961982</b>	White PVC Plastic Tubular, 1-1/2" OD x 6" Flanged Kitchen Drain Tailpiece. Carded. <b>052151073594</b>
<b>03-4305 5961990</b>	White PVC Plastic Tubular, 1-1/2" OD x 8" Flanged Kitchen Drain Tailpiece. Carded. <b>052151073617</b>
<b>03-4307 5962006</b>	White PVC Plastic Tubular, 1-1/2" OD x 12" Flanged Kitchen Drain Tailpiece. Carded. <b>052151030313</b>
<b>03-4311 5962014</b>	White PVC Plastic Tubular, 1-1/2" OD x 16" Flanged At Both Ends Kitchen Drain Tailpiece. Carded. <b>052151073655</b>
<b>03-4315 5962022</b>	White PVC Plastic Tubular, 1-1/4" OD, Flexible/Expandable, Slip Joint Tailpiece Extension, Extends 4-1/2" To 7-3/4", Can Be Used For Plastic Or Metal, Includes 1 Each Slip Nut & Washer. Carded. <b>052151073686</b>
<b>03-4317 5962030</b>	White PVC Plastic Tubular, 1-1/2" OD x 12" Flexible/Expandable, Kitchen Drain Direct Connection, Tailpiece Extension Tube, Includes 1 Each Slip Nut & Washer. Carded. <b>052151073716</b>

**Picture**



<b>Lasco # Blish Mize SKU</b>	<b>Description</b>
<b>03-4319 5962048</b>	White PVC Plastic Tubular, 1-1/2" OD, Flexible/Expandable, Kitchen Drain Slip Joint Tailpiece Extension Tube, Includes 1 Each Slip Nut & Washer. Carded. <b>052151073747</b>
<b>03-4321 5962055</b>	White PVC Plastic Tubular, 1-1/4" OD Or 1-1/2" OD x 1-1/2" OD Tube x 6" Slip Joint Lavatory/Kitchen Drain Extension Tube, Includes Nuts & Washers. Carded. <b>052151073785</b>
<b>03-4323 5962063</b>	White PVC Plastic Tubular, 1-1/4" OD Or 1-1/2" OD x 1-1/2" OD Tube x 8" Slip Joint Lavatory/Kitchen Drain Extension Tube, Includes Nuts & Washers. Carded. <b>052151073815</b>
<b>03-4325 5962071</b>	White PVC Plastic Tubular, 1-1/4" OD Or 1-1/2" OD x 1-1/2" OD Tube x 12" Slip Joint Lavatory/Kitchen Drain Extension Tube, Includes Nuts & Washers. Carded. <b>052151073846</b>
<b>03-4327 5962089</b>	White PVC Plastic Tubular, 1-1/4" OD Or 1-1/2" OD x 1-1/2" OD Tube x 16" Double Ended Slip Joint Lavatory/Kitchen Drain Extension Tube, Includes Nuts & Washers. Carded. <b>052151073877</b>
<b>03-4331 5962097</b>	White PVC Plastic Tubular, 1-1/2" OD x 8", Direct Connect, Flanged Branch Tailpiece, With 7/8" Outlet Diameter, Used In Kitchen, Laundry, Or Bathroom Sinks. Carded. <b>052151073891</b>
<b>03-4333 5962105</b>	White PVC Plastic Tubular, 1-1/2" OD x 8", Slip Joint, Dishwasher Branch Tailpiece, With 7/8" Outlet Diameter, Used In Kitchen, Laundry, Or Bathroom Sinks. Carded. <b>052151073921</b>
<b>03-4335 5962113</b>	White PVC Plastic Tubular, 1-1/2" OD, S-Trap, Inlet Slip Joint To 1-1/4" OD Or 1-1/2" OD Tube, Outlet 1-1/2" OD Tube, For Lavatory/Kitchen Through The Floor, Drain Connection, Includes 3 Nuts & Washers. Carded. <b>052151073952</b>
<b>03-4339 5962121</b>	White PVC Plastic Tubular, 1-1/4" OD, S-Trap, Inlet Slip Joint 1-1/4" OD Tube, Outlet 1-1/4" OD Tube, For Lavatory/Kitchen Through The Floor, Drain Connection, Includes Nuts & Washers. Carded. <b>052151217707</b>

**Picture**



<b>Lasco # Blish Mize SKU</b>	<b>Description</b>
<b>03-4341 5962139</b>	White PVC Plastic Tubular, 1-1/4" OD x 6", Lavatory Slip Joint Drain Extension, Includes 1 Each Nut & Washer. Carded. <i>052151217714</i>
<b>03-4343 5967625</b>	White PVC Plastic Tubular, 1-1/4" OD x 8", Lavatory Direct Connect, Slip Joint Extension, With 1-1/4" Outlet Diameter, Includes 1 Each Nut & Washer. Carded. <i>052151217721</i>
<b>03-4345 5962147</b>	White PVC Plastic Tubular, 1-1/4" OD x 12", Lavatory Slip Joint Drain Extension, Includes 1 Each Nut & Washer. Carded. <i>052151217738</i>
<b>03-4347 5962154</b>	White PVC Plastic Tubular, 1-1/4" OD x 16", Lavatory Double Slip Joint Extension, Includes 1 Each Nut & Washer. Carded. <i>052151217745</i>
<b>03-4355 5962162</b>	White PVC Plastic Tubular, 1-1/2" OD & 1-1/4" OD, Universal Slip Joint Coupling, Flexible/Expandable To 7", Offsets To 2-1/2", Will Bend 90°. Includes 2 Nuts & Washers. Carded. <i>052151073983</i>
<b>03-4505 5962170</b>	1-1/4" OD x 8" Chrome Plated, 22 Gauge, Two Piece, P.O. Plug, Lavatory Drain Tailpiece. Carded. <i>052151031013</i>
<b>03-4521 5962188</b>	1-1/4" OD x 5" Chrome Plated, 22 Gauge, One Piece, P.O. Plug, Lavatory Drain Tailpiece. Carded. <i>052151031020</i>
<b>03-4571 5962196</b>	1-1/4" OD x 5" Chrome Plated Brass, 22 Gauge, Two Piece, C.O. Plug, Lavatory Drain, Chain & Stopper, Used In Bathroom Sinks Without Built In Overflow. Carded. <i>052151074270</i>
<b>03-4581 5968524</b>	1-1/4" OD x 5" Plastic One Piece C.O. Plug With Chain & Push Pull Stopper. Used In Bathroom Sinks Without Built In Overflow. Carded. <i>052151195036</i>

**Picture**



<b>Lasco # Blish Mize SKU</b>	<b>Description</b>
<b>03-4601 5968862</b>	1-1/4" OD x 6", Chrome Plated Cast Brass, Grid Strainer Drain, For Lavatory. Carded. <i>052151282262</i>
<b>03-4607 5967633</b>	1-1/4" OD, White Plastic, One Piece With Chrome Plated Exposed Trim, Flexible/Extendable Tailpiece, With 1-1/4" Outside Diameter, Lavatory Pop Up Drain Assembly. Carded. <i>052151074300</i>
<b>03-4621 5962204</b>	1-1/4" OD x 8-1/2" Tailpiece, Chrome Plated Brass Pop Up Assembly With Lift Rod, Includes All Linkage Components. Carded. <i>052151030207</i>
<b>03-4631 5962212</b>	1-1/4" OD x 8-1/2" Tailpiece, Plastic Body, Chrome Plated Trim, Lavatory Pop Up Drain Assembly, Includes All Linkage Components. Carded. <i>052151074409</i>
<b>03-4669 5962220</b>	Replacement Vertical Lavatory Faucet Drain, Pop Up Lift Rod & Strap Assembly, Fits Price Pfister & Most Other Pup Ups. Carded. <i>052151030139</i>
<b>03-4691 5962238</b>	Horizontal Replacement Faucet Pop Up Rod Assembly, Nut & Clevis, For Lavatory Faucet Pop Up Drain, Fits Most Plastic Imports. Carded. <i>052151247940</i>
<b>03-4697 5962246</b>	Horizontal Replacement Faucet Pop Up Rod Assembly, Nut & Clevis, For Lavatory Faucet Pop Up Drain, Fits Price Pfister & Assorted Import Pop Ups. Carded. <i>052151030122</i>
<b>03-4699 5962253</b>	Horizontal Replacement Universal Plastic Ball Rod Assembly, Fit All Rod Consists Of Three Interchangeable Pivot Ball Ends. Carded. <i>052151225122</i>
<b>03-4703 5962279</b>	Horizontal Replacement Faucet Pop Up Ball Rod Plastic Nut & Clevis ONLY, Fits Price Pfister & Other Import Pop Ups. Carded. <i>052151030115</i>

**Picture**



<b>Lasco # Blish Mize SKU</b>	<b>Description</b>
<b>05-2099 5967740</b>	ABS Black Plastic 1-1/2" Male Pipe Thread Plumbing Vent, Installs On Drain Line For Venting Sinks, Tubs, Showers, Washing Machines, When Normal Vent Pipes Cannot Be Used, Do To Framing Issues. Carded. <i>052151247254</i>
<b>05-2105 5963111</b>	Plastic Air Gap, With Chrome Cap, 5/8" OD Inlet x 7/8" OD Outlet, For Dishwasher Wye. Carded. <i>052151050014</i>
<b>13-1705 5968607</b>	Wall Hung 8127 Sink Basin Hangers, Stamped Steel, One Pair. Carded. <i>052151130143</i>
<b>36-5007 5964812</b>	6 Foot Dishwasher Electrical Three Wire Pigtail, With Ground. Carded. <i>052151176462</i>
<b>39-9003 5964838</b>	Insinkerator Disposal, Replacement Splash Guard, OEM #1439, Fits Badger & 333 Models. Carded. <i>052151390042</i>
<b>39-9005 5964846</b>	Insinkerator Disposal, Replacement Old Style Hush Cushion Outlet Seal, OEM #1470. Carded. <i>052151390011</i>
<b>39-9011 5968300</b>	Insinkerator Disposal, Replacement Chrome Stopper, OEM #5032. Carded. <i>052151390066</i>
<b>39-9013 5964853</b>	Insinkerator Disposal Replacement Black Plastic Stopper, OEM #4310, Fits Badger Models. Carded. <i>052151390073</i>
<b>39-9037 5964861</b>	Insinkerator Disposal, Replacement Hush Cushion Outlet Seal, Fits New Style Badger. Carded. <i>052151178145</i>

**Picture**



<b>Lasco # Blish Mize SKU</b>	<b>Description</b>
<b>39-9041 5964879</b>	Insinkerator Disposal Wrench, Used To Un-Jam/Free Up Garbage Disposal. Carded. <i>052151390097</i>
<b>39-9057 5964887</b>	Whirlaway & Sinkmaster Disposal, Replacement Splashguard. Carded. <i>052151285669</i>
<b>39-9069 5964895</b>	Whirlaway & Sinkmaster Disposal, Replacement Stopper. Carded. <i>052151285645</i>
<b>42-2103 5964903</b>	Fit Most Sink Rim Clips, Works On J Hook Frames, 10-Pack. Carded. <i>052151420022</i>
<b>42-2111 5964911</b>	Elkay Style Sink Rim Clips, For Stainless Steel Sinks, 10 Pack. Carded. <i>052151287229</i>

**Picture**



