

Features

- Single lever handle allows for simultaneous on/off activation and temperature setting.
- 1.75 gpm (gallons per minute) showerhead flow rate.
- Rite-Temp® pressure-balancing technology maintains water temperature within +/- 3°F
- Katalyst® air-induction technology maximizes the air/water mix for a powerful, even flow.
- Heavy-duty slip-fit clamp design and NPT-threaded spout.
- MasterClean™ sprayface is easy to clean.
- Coordinates with other products in the Mistos™ collection.

Material

- Premium metal construction.
- KOHLER finishes resist corrosion and tarnishing.

Installation

- Wall-mount.

Optional Products/Accessories

1073881 Deep Rough-in Kit
88526 Thin Wall Trim Kit

Included Components

Additional Components:

1.75 gpm showerhead
Diverter spout
Shower arm and flange
Valve trim plate



Codes/Standards



ASME A112.18.1/CSA B125.1
ASSE 1016/ASME A112.1016/CSA B125.16
DOE - Energy Policy Act 1992
EPA WaterSense®
California Energy Commission (CEC)

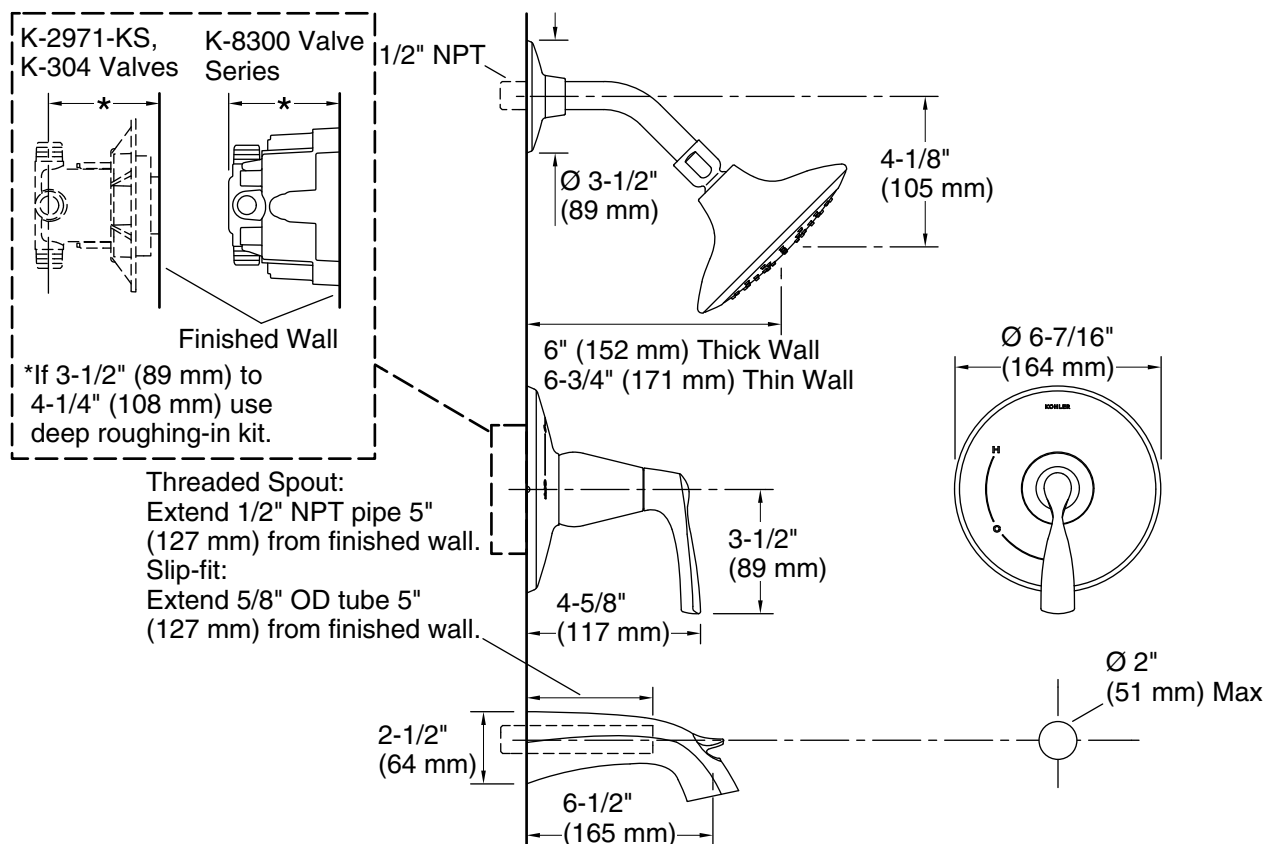
KOHLER® Faucet Lifetime Limited Warranty

See website for detailed warranty information.

Available Colors/Finishes

Color tiles intended for reference only.

| Color | Code | Description |
|--|------|-------------------------|
|  | CP | Polished Chrome |
|  | BN | Vibrant® Brushed Nickel |



Technical Information

All product dimensions are nominal.

Drain included: No

Showerhead/Body Spray:

Rated maximum flow: 1.75 gal/min (6.6 l/min)

Notes

Install this product according to the installation instructions.

Install straight pipe or tube drop of 7" (178 mm) to 18" (457 mm) with single elbow between the valve and the wall-mount spout.

NOTICE: Risk of product damage. Long screws, for installing trim, can damage the K-2971-KS valve. Consult the trim installation guide to verify if the thin wall installation kit is needed.