

K-T Welding Plan-O-Grams

This catalog is designed to help our retail partners select a welding Plan-O-Gram that fits their market. K-T offers a wide variety of Plan-O-Grams that are sure to fit just about any market environment. From a basic 4' display for hardware stores, to a 28' display that has the product depth and quantity for high volume sales.

Providing you with programs and tools
to increase volume and sales goals

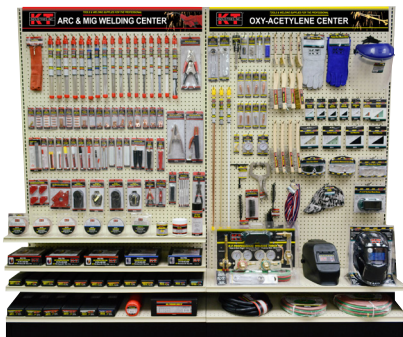
16' Set Model # 130-72304



12' Set Model # 130-72303



8' Set Model # 130-72302



4' Set Model # 130-72301



K-T Welding Plan-O-Grams



16' Welding Display



16' x 84" Welding Display Model No. 130-72304

This welding display is designed for retail environments that demand product selection and stock depth. It has a product mix that will fulfill most user's requests. This set is very capable of handling the medium to large sales volume. KT's signage helps end users make the right buying decision as well as directing them to the right area and helps them make the right decision when purchasing K-T product.



16' Welding Display



Width:
48"

KT

INDUSTRIES INC.

TOOLS & WELDING SUPPLIES FOR THE PROFESSIONAL

ARC & MIG WELDING CENTER

ARC																				MARKING PENCIL			MINI MAGNETS			MEDIUM MAGNET			LARGE MAGNET			CABLE LUG CRIMPER																																									
1-1121 1-1122 1-1123 1-1321 1-1322 1-1341 1-1421 1-1422 1-1521 1-1522 1-1622 1-1707 1-1708 1-1712 1-1727 1-1728 1-1752 1-1767 1-1768 1-1808 1-1852 1-1883 1-1810																				5-0068			5-0015			5-0042			5-0043			5-0045			5-0046			5-0047			5-0048			5-0057			5-0058			5-0065			5-0080			5-0066			5-0085			5-1545			5-1550			5-1555			2-2330		
Mig																				SPRAY GALV		NOZZLE GEL		BRAZING FLUX																																																	
2-1515 2-1516 2-1517 2-1518 2-1520 2-1550 2-1551 2-1552 2-1565 2-1568 2-2340 2-2341 2-2342 2-2344 2-2346 2-2347 2-2348 2-2349 2-2350 2-2351 2-2353 2-2354																				2-2710		2-2700		2-2750																																																	
MIG WIRE																																																																									
1-3121				1-3123				1-3125				1-3153				1-3154				1-3313				1-3422				1-3131				1-3133				1-3135				1-3155				1-3156																													
1-1101		1-1102		1-1103		1-1301		1-1302		1-1303		1-1401		1-1402		1-1403		1-1501		1-1502		1-1602		1-1846																																																	
1-1012		1-1111		1-1112		1-1113		1-1312		1-1313		1-1412		1-1413		1-1512		1-1513		1-1612																																																					
MIG WIRE				MIG WIRE																																																																					
1-3142				1-3143																																																																					

Height
84"

16' x 84" Welding Accessory Display Section 1
Model No. 130-72304

16' Welding Display



Width:
48"

KT
INDUSTRIES INC.
TOOLS & WELDING SUPPLIES FOR THE PROFESSIONAL

OXY-ACETYLENE CENTER

Torch Kit 3-7100		Oxy 5-1200	Oxy 5-1300	New Welding Goggles 4-5005	Robert Welding Goggles 4-5010	Best Welding Goggles 4-5020	No Welding Goggles 4-5030								
Oxy 3-7203	Oxy 3-7206	Oxy 32-3004	Oxy 5-1205	Oxy 5-1305	Oxy 5-0040	CAP 4-3123	CAP 4-3125	CAP 4-3128							
Oxy 31-1270	Oxy 31-1271	Oxy 31-1271P	Oxy 31-1272	Oxy 31-1272P	Oxy 31-1273	Oxy 32-1110	Oxy 32-1001	Oxy 32-1001P	Oxy 32-1002	Oxy 32-1002P	Oxy 32-1003	Lock 21-6212	Lock 21-6214	Lock 21-6213	BEANIE 4-3150
Oxy 34-1261	Oxy 34-1261P	Oxy 34-1262	Oxy 3-7526	Oxy 3-7540	Oxy 3-7556	Oxy 3-7568	Oxy 3-7565	Oxy 3-7567	Oxy 3-7211	Oxy 3-7110	4-6100	4-6104	Over the Head Bandana 4-6120	Downward Point Mask 4-3300	
ACETYLENE REGULATOR 3-7130		OXYGEN REGULATOR 3-7135		Oxy 3-7303	Oxy 3-7310	Oxy 5-0120	Oxy 3-7605	3-0122	BANDANA 4-3130	BANDANA 4-3131	BANDANA 4-3132				
Twin Hose 3/16" x 25' 3-7412	Twin Hose 1/4" x 25' 3-7460	Twin Hose 3/16" x 50' 3-7418	Twin Hose 1/4" x 50' 3-7490												

Height
84"

16' x 84" Welding Accessory Display Section 3
Model No. 130-72304

16' Welding Display

Width: 48"

TOOLS & WELDING SUPPLIES FOR THE PROFESSIONAL

SAFETY EQUIPMENT CENTER

3" x 15.5" Double-Clamp Faceshield 4-2470		3" x 15.5" Double-Turn Faceshield 4-2471		3" x 15.5" Clamp Faceshield 4-2480		3" x 15.5" Turn Faceshield 4-2481		FACESHIELD 4-2476			
LENS 4-1101	LENS 4-1105	LENS 4-1109	LENS 4-1110	LENS 4-1170	LENS 4-1192	LENS 4-1186	LENS 4-1191	LENS 4-1150	LENS 4-1151	LENS 4-1159	LENS 4-1160
Non-Adjustable Goggles 4-2450		Triple Faceshield Goggles 4-2437		Clear Faceshield Goggles 4-2436		Shield & Safety Goggles 4-2456		Tinted Prescription Goggles 4-2455		Clear Faceshield Goggles 4-2460	
4-2400		4-2405		4-2300		4-2305		HeadGear 4-1201			
WELDING HELMET 4-1002		WELDING HELMET 4-1004		Shatter Shield 4-5205		Laser Arrow 4-5115		Laser Pad & Glass 4-5123			
AUTO-DARKENING HELMET 4-1050		AUTO-DARKENING HELMET 4-1070		AUTO-DARKENING HELMET 4-1071		AUTO-DARKENING HELMET 4-1073					

Height: 84"

16' x 84" Welding Accessory Display Section 4
Model No. 130-72304

16' Welding Display



16' x 84" Welding Display Model No. 130-72304

K-T Model No.	Section	Row	Item	Description	Shelf Pack	UPC
1-1121	1	1	1	6011 Electrode 1 Lb 3/32"	25	083905111217
1-1122	1	1	2	6011 Electrode 1 Lb 1/8"	25	083905111224
1-1123	1	1	3	6011 Electrode 1 Lb 5/32"	25	083905111231
1-1321	1	1	4	6013 Electrode 1 Lb 3/32"	25	083905113211
1-1322	1	1	5	6013 Electrode 1 Lb 1/8"	25	083905113228
1-1341	1	1	6	6013 Electrode 1/2 Lb 1/16"	25	083905113419
1-1421	1	1	7	7014 Electrode 1 Lb 3/32"	25	083905114218
1-1422	1	1	8	7014 Electrode 1 Lb 1/8"	25	083905114225
1-1521	1	1	9	7018 Electrode 1 Lb 3/32"	25	083905115215
1-1522	1	1	10	7018 Electrode 1 Lb 1/8"	25	083905115222
1-1622	1	1	11	7018 Ac Electrode 1 Lb 1/8"	25	083905116229
1-1707	1	1	12	Nickel 55 3/32" Value Pack 3Pc	25	083905117073
1-1708	1	1	13	Nickel 55 1/8" Value Pack 3Pc	25	083905117080
1-1712	1	1	14	Cast Iron Electrode 1/8" 1 Lb	25	083905117127
1-1727	1	1	15	Nickel 99 3/32" Value Pack 5Pc	25	083905117271
1-1728	1	1	16	Nickel 99 1/8" Value Pack 3Pc	25	083905117288
1-1752	1	1	17	Stainless Steel 308-16 1/8" 1 Lb	25	083905117523
1-1767	1	1	18	Stainless Steel 312 3/32" Value Pack 8Pc	25	083905117677
1-1768	1	1	19	Stainless Steel 312 1/8" Value Pack 4 Pc	25	083905117684
1-1808	1	1	20	Aluminum Electrode 1/8" Value Pack 6 Pc	25	083905118087
1-1852	1	1	21	Hardfacing 1/8" 1 Lb	25	083905118520
1-1883	1	1	22	Hardface Impact 5/32" 1 Lb	25	083905118834
1-1810	1	1	23	Alum Pro Brazing Rod 15 Pc	25	083905118100
5-0068	1	2	1	Silver Marking Pencil 3 Pk	5	083905500684
5-0015	1	2	2	Premium Scribe	5	083905500158
5-0042	1	2	3	Solid Yellow Paint Stick 2 Pk	5	083905500424
5-0043	1	2	4	Solid White Paint Sticks 2 Pk	5	083905500431
5-0045	1	2	5	Yellow Liquid Paint Marker	5	083905500455
5-0046	1	2	6	White Liquid Paint Marker	5	083905500462
5-0047	1	2	7	Black Liquid Paint Marker	5	083905500479
5-0048	1	2	8	Red Liquid Paint Marker	5	083905500486
5-0057	1	2	9	Round Silver Mechanical Pencil Holder	5	083905500578
5-0058	1	2	10	Silver Refills For Mechanical Pencil 5 Pk	5	083905500585
5-0065	1	2	11	Flat Soap Stone Holder	5	083905500653
5-0080	1	2	12	Flat Soap Stone 5 Pk	5	083905500806
5-0066	1	2	13	Round Soap Stone Holder	5	083905500660
5-0085	1	2	14	Round Soap Stone 5 Pk	5	083905500851
5-1545	1	2	15	4 Pc Mini Magnetic Holder Set	5	083905515459
5-1550	1	2	16	Medium Magnetic Holder	5	083905515503
5-1555	1	2	17	Large Magnetic Holder	5	083905515558
2-1515	1	3	1	Tweeco Gas Diffuser Each	5	083905215151
2-1516	1	3	2	Tweeco 11 Tip .023 5 Pk	5	083905215168
2-1517	1	3	3	Tweeco 11 Tip .030 5 Pk	5	083905215175
2-1518	1	3	4	Tweeco 11 Tip .035 5 Pk	5	083905215182
2-1520	1	3	5	Tweeco Nozzle 1/2" Each	5	083905215205
2-1550	1	3	6	.023 Contact Tip Hobart 5Pc	5	083905215502
2-1551	1	3	7	.030 Contact Tip Hobart 5Pc	5	083905215519
2-1552	1	3	8	.035 Contact Tip Hobart 5Pc	5	083905215526
2-1565	1	3	9	1/2" Hobart Style Nozzle	5	083905215656
2-1568	1	3	10	5/8" Hobart Style Nozzle	5	083905215687
2-2340	1	3	11	Cable Lug Size 8 X No. 10 2 Pk	5	083905223408



16' Welding Display

16' x 84" Welding Display Model No. 130-72304

K-T Model No.	Section	Row	Item	Description	Shelf Pack	UPC
2-2341	1	3	12	Cable Lug Size 6 X 1/4 2 Pk	5	083905223415
2-2342	1	3	13	Cable Lug Size 4 X 3/8 2 Pk	5	083905223422
2-2344	1	3	14	Cable Lug Size 2 X 3/8 2 Pk	5	083905223446
2-2346	1	3	15	Cable Lug Size 1 X 3/8 2 Pk	5	083905223460
2-2347	1	3	16	Cable Lug Size 1/0 X 1/2 2Pk	5	083905223477
2-2348	1	3	17	Cable Lug Size 1/0 X 3/8 2Pk	5	083905223484
2-2349	1	3	18	Cable Lug Size 2/0 X 1/2 2Pk	5	083905223491
2-2350	1	3	19	Cable Lug Size 2/0 X 3/8 2Pk	5	083905223507
2-2351	1	3	20	Cable Lug Size 3/0 X 1/2 2 Pk	5	083905223514
2-2353	1	3	21	Cable Lug Size 4 X 5/16 2 Pk	5	083905223538
2-2354	1	3	22	Cable Lug Size 2 X 5/16 2 Pk	5	083905223545
2-2330	1	3	23	Cable Lug Crimping Tool	5	083905223309
1-3121	1	4	1	Mild Steel Mig Wire 70S-6 .023 2 Lb	20	083905131215
1-3123	1	4	2	Mild Steel Mig Wire 70S-6 .030 2 Lb	20	083905131239
1-3125	1	4	3	Mild Steel Mig Wire 70S-6 .035 2 Lb	20	083905131253
1-3153	1	4	4	Gasless Flux Core Mig Wire .030 2 Lb	20	083905131536
1-3154	1	4	5	Gasless Flux Core Mig Wire .035 2 Lb	20	083905131543
1-3313	1	4	6	Aluminum 5356 .035 Mig Wire 1 Lb	20	083905133134
1-3422	1	4	7	Stainless Steel 308-16 .030 Mig Wire 2 Lb	20	083905134223
2-2710	1	4	8	Anti-Spatter Spray 16 Oz	12	083905227109
2-2700	1	4	9	Nozzel Gel 16 Oz	12	083905227000
2-2750	1	4	10	Brazing Flux 1/2 Lb.	32	083905227505
1-3131	1	5	1	Mild Steel Mig Wire 70S-6 .023 10 Lb	1	083905131314
1-3133	1	5	2	Mild Steel Mig Wire 70S-6 .030 10 Lb	1	083905131338
1-3135	1	5	3	Mild Steel Mig Wire 70S-6 .035 10 Lb	1	083905131352
1-3155	1	5	4	Gasless Flux Core Mig Wire .030 10 Lb	1	083905131550
1-3156	1	5	5	Gasless Flux Core Mig Wire .035 10 Lb	1	083905131567
1-1101	1	6	1	6011 Electrode 5 Lb 3/32"	10	083905111019
1-1102	1	6	2	6011 Electrode 5 Lb 1/8"	10	083905111026
1-1103	1	6	3	6011 Electrode 5 Lb 5/32"	10	083905111033
1-1301	1	6	4	6013 Electrode 5 Lb 3/32"	10	083905113013
1-1302	1	6	5	6013 Electrode 5 Lb 1/8"	10	083905113020
1-1303	1	6	6	6013 Electrode 5 Lb 5/32"	10	083905113037
1-1401	1	6	7	7014 Electrode 5 Lb 3/32"	10	083905114010
1-1402	1	6	8	7014 Electrode 5 Lb 1/8"	10	083905114027
1-1403	1	6	9	7014 Electrode 5 Lb 5/32"	10	083905114034
1-1501	1	6	10	7018 Electrode 5 Lb 3/32"	10	083905115017
1-1502	1	6	11	7018 Electrode 5 Lb 1/8"	10	083905115024
1-1602	1	6	12	7018 Ac Electrode 5 Lb 1/8"	10	083905116021
1-1846	1	6	13	Hardface Buildup 5/32" 5 Lb	6	083905118469
1-1012	1	7	1	6010 Electrode 10Lb 1/8"	6	083905110128
1-1111	1	7	2	6011 Electrode 10Lb 3/32"	6	083905111118
1-1112	1	7	3	6011 Electrode 10Lb 1/8"	6	083905111125
1-1113	1	7	4	6011 Electrode 10Lb 5/32"	6	083905111132
1-1312	1	7	5	6013 Electrode 10 Lb 1/8"	6	083905113129
1-1313	1	7	6	6013 Electrode 10Lb 5/32"	6	083905113136
1-1412	1	7	7	7014 Electrode 10Lb 1/8"	6	083905114126
1-1413	1	7	8	7014 Electrode 10Lb 5/32"	6	083905114133
1-1512	1	7	9	7018 Electrode 10Lb 1/8"	5	083905115123
1-1513	1	7	10	7018 Electrode 10Lb 5/32"	5	083905115130
1-1612	1	7	11	7018 Ac Electrode 10 Lb 1/8"	6	083905116120

16' Welding Display



16' x 84" Welding Display Model No. 130-72304

K-T Model No.	Section	Row	Item	Description	Shelf Pack	UPC
1-3142	1	8	1	Mild Steel Mig Wire 70S-6 .030 33 Lb	1	083905131420
1-3143	1	8	2	Mild Steel Mig Wire 70S-6 .035 33 Lb	1	083905131437
1-3500	1	8	3	14" Rod Canister W/Dividers	24	083905135008
4-5150	2	1	1	Leather Rod Holder	5	083905451504
2-2120	2	1	2	200 Amp Electrode Holder	5	083905221206
2-2130	2	1	3	300 Amp Electrode Holder	5	083905221305
2-2140	2	1	4	400 Amp Heavy Duty Electrode Holder	5	083905221404
2-2230	2	1	5	300 Amp Copper Gr Clamp	5	083905222302
2-2260	2	1	6	300 Amp Steel Gr Clamp	5	083905222609
2-2290	2	1	7	500 Amp Steel Gr Clamp	5	083905222906
2-2474	2	1	8	600 Amp Battery Chgr Clamps	5	083905224740
2-2475	2	1	9	400 Amp Battery Chgr Clamps	5	083905224757
5-0060	2	2	1	4 Way Pick Set	5	083905500608
5-1140	2	2	2	Mig Nozzle Cleaner	5	083905511406
2-2220	2	2	3	200 Amp Copper Gr Clamp	5	083905222203
2-2410	2	2	4	Cable Connector Set 4-1/0 Black	5	083905224108
2-2415	2	2	5	Cable Connector Set 4-1/0 Red	5	083905224153
2-2450	2	2	6	Universal Male Machine Plug 4-1/0 Black	5	083905224504
2-2451	2	2	7	Universal Male Machine Plug 4-1/0 Red	5	083905224511
2-2459	2	2	8	Cable Splicer 4-1/0	5	083905224597
2-2478	2	2	9	50 Amp Tune Up Clamps	5	083905224788
1-5116	2	2	10	Rg-45 Mild Steel 36" 1 Lb 1/16"	25	083905151169
1-5118	2	2	11	Rg-45 Mild Steel 36" 1 Lb 1/8"	25	083905151183
1-5132	2	2	12	Rg-45 Mild Steel 36" 1 Lb 3/32"	25	083905151329
1-5219	2	2	13	Bare Bronze 1/8" 5 Pc 36"	25	083905152197
1-5233	2	2	14	Bare Bronze 3/32" 5 Pc 36"	25	083905152333
1-5319	2	2	15	Flux Coated Bronze 1/8" 5 Pc 36"	25	083905153194
1-5333	2	2	16	Flux Coated Bronze 3/32" 5 Pc 36"	25	083905153330
1-5370	2	2	17	Phos-Copper-Silver Brazingalloys 1/2 Lb.	25	083905153705
5-1150	2	3	1	Mig Plier	5	083905511505
2-2650	2	3	2	Crowfoot Recptacle 50 Amps	10	083905226508
2-2655	2	3	3	Crowfoot Male Plug 50 Amps	10	083905226553
2-2656	2	3	4	Pin Recptacle 50 Amps	10	083905226560
2-2651	2	3	5	Pin Male Plug 50 Amps	10	083905226515
5-1100	2	3	6	Brush For Chipping Hammers	5	083905511000
5-1000	2	3	7	Spring Handle Chipping Hammer	10	083905510003
5-2205	2	4	1	Small Stainless Steel Cleaning Brush	5	083905522051
5-2206	2	4	2	Small Brass Cleaning Brush	5	083905522068
5-2207	2	4	3	Angled Head Stainless Steel Cleaning Brush	5	083905522075
5-2208	2	4	4	Angled Head Brass Cleaning Brush	5	083905522082
5-2201	2	4	5	3 Pc Plastic Stainless Steel Cleaning Brush Set	5	083905522013
5-2210	2	4	6	Shoe Handle Carbon Steel Brush	12	083905522105
5-2211	2	4	7	Shoe Handle Carbon Steel Brush With Scraper	12	083905522112
5-2215	2	4	8	Shoe Handle Stainless Steel Brush	12	083905522150
5-2216	2	4	9	Shoe Handle Brass Brush	12	083905522167
5-1090	2	4	10	Chipping Hammer With Brush	1	083905510904
5-2220	2	5	1	Bent Handle Carbon Steel Brush	12	083905522204
5-2221	2	5	2	Bent Handle Carbon Steel Brush With Scraper	12	083905522211
5-2222	2	5	3	V Groove Carbon Steel Scratch Brush	12	083905522228
5-2223	2	5	4	V Groove Stainless Steel Scratch Brush	12	083905522235
5-2225	2	5	5	Bent Handle Stainless Steel Brush	12	083905522259
5-2226	2	5	6	Bent Handle Brass Brush	12	083905522266



16' Welding Display

16' x 84" Welding Display Model No. 130-72304

K-T Model No.	Section	Row	Item	Description	Shelf Pack	UPC
5-2315	2	5	7	Deluxe Parts Cleaning Brush	12	083905523157
2-2522	2	6	1	No. 2 Welding Cable 125' Spool	125'	083905225228
2-2542	2	6	1	No. 4 Welding Cable 125' Spool	125'	083905225426
2-2570	2	6	2	25' 8/3 Pin Extension Cord	1	083905225709
31-5000	2	6	3	Victor Style Med. Duty Torch Kit	2	083905650006
3-7100	3	1	1	K-T Cutting Torch Kit UI	1	083905371000
5-1200	3	1	2	Single Flint Striker	5	083905512007
5-1300	3	1	3	Three Flint Striker	5	083905513004
4-5005	3	1	4	Grey Welders Gloves	12	083905450057
4-5010	3	1	5	Russet Welding Glove	12	083905450101
4-5020	3	1	6	Premium Grade Welding Glove Blue	12	083905450200
4-5030	3	1	7	Mig Glove	12	083905450309
3-7203	3	2	1	Harris Style Med. Duty Torch Handle	5	083905372038
3-7206	3	2	2	Harris Style Med. Duty Cutting Head	5	083905372069
32-3004	3	2	3	Harris Heating Tip Size 4	5	083905630046
5-1205	3	2	4	Single Flint Replacements 5 Pk	5	083905512052
5-1305	3	2	5	Three Flint Replacement Flints 4 Pk	5	083905513059
5-0040	3	2	6	Tip Drill	5	083905500400
5-0070	3	2	4	Standard Tip Cleaner	5	083905500707
5-0075	3	2	5	Long Tip Cleaner	5	083905500752
5-1250	3	2	6	Electronic Spark Lighter	5	083905512502
4-3123	3	2	7	Various Prints Weld Cap Large Sizes	12	083905431230
4-3125	3	2	8	Universal Size Welders Cap	12	083905431254
4-3128	3	2	9	Camo Style Caps	12	083905431285
31-1270	3	3	1	Victor Style Cutting Tip Size 0, 3-101	5	083905712704
31-1271	3	3	2	Victor Style Cutting Tip Size 1, 3-101	5	083905712711
31-1271P	3	3	3	Victor Style 3Gpn Size 1 Propane	5	083905712520
31-1272	3	3	4	Victor Style Cutting Tip Size 2, 3-101	5	083905712728
31-1272P	3	3	5	Victor Style 3Gpn Size 2 Propane	5	083905712537
31-1273	3	3	6	Victor Style Cutting Tip Size 3, 3-101	5	083905712735
32-1110	3	3	7	Harris Cutting Tip Size 0, 6290	5	083905611106
32-1001	3	3	8	Harris Cutting Tip Size 1, 6290	5	083905610017
32-1001P	3	3	9	Harris Propane Cutting Tip Size 1, 6290Nx	5	083905610116
32-1002	3	3	10	Harris Cutting Tip Size 2, 6290	5	083905610024
32-1002P	3	3	11	Harris Propane Cutting Tip Size 2, 6290Nx	5	083905610123
32-1003	3	3	12	Harris Cutting Tip Size 3, 6290	5	083905610031
21-6212	3	3	15	11" Locking C Clamp	5	083905662122
21-6214	3	3	14	9" Straight Nose Welding Locking Plier	5	083905662146
21-6213	3	3	13	8" Welding Locking Plier	5	083905662139
4-3150	3	3	16	Black Quilted Skull Cap	12	083905431506
34-1261	3	4	1	Smith Cutting Tip Size 1, Mc-12	5	083905714616
34-1261P	3	4	2	Smith Cutting Tip Mc-40 Propane Size 1	5	083905714685
34-1262	3	4	3	Smith Cutting Tip Size 2, Mc-12	5	083905714623
3-7526	3	4	4	Hose Coupler Kit	5	083905375268
3-7540	3	4	5	Torch End Check Valve Set	5	083905375404
3-7566	3	4	6	Hose End Repair 1/4" Ferrule	5	083905375664
3-7568	3	4	7	Hose Splicing 1/4" Ferrule	5	083905375688
3-7565	3	4	8	Hose End Repair 3/16" Ferrule	5	083905375657
3-7567	3	4	9	Hose Spicing 3/16" Ferrule	5	083905375671
3-7211	3	4	10	Harris Style D-85 Mixer	5	083905372113
3-7110	3	4	11	Victor Med. Duty Mixer	5	083905371109

16' Welding Display



16' x 84" Welding Display Model No. 130-72304

K-T Model No.	Section	Row	Item	Description	Shelf Pack	UPC
4-6100	3	4	12	Comfort Firt Disposable Ear Plugs X 10	1	083905461008
4-6104	3	4	13	Comfort Firt Disposable Ear Plugs Corded X 5	1	083905461046
4-6120	3	4	14	Over The Head Ear Plugs	5	083905461206
4-3300	3	4	15	Disposable Dust Mask 5 Pk	12	083905433005
3-7130	3	5	1	Acetylene Regulator	5	083905371307
3-7135	3	5	2	Oxygen Regulator	5	083905371352
3-7303	3	5	3	2"Pressure Gauge 30 Lb. Acetylene	5	083905373035
3-7310	3	5	4	2" Pressure Gauge 100 Lb. Oxygen	5	083905373103
3-7340	3	5	3	2"Pressure Gauge 400 Lb. Acetylene	5	083905373400
3-7380	3	5	4	2"Pressure Gauge 4000 Lb Oxygen	5	083905373806
5-0120	3	5	5	Combination Wrench	5	083905501209
3-7605	3	5	6	Locking Crimping Tool	5	083905376050
5-0122	3	5	7	T Wrench 9/32" Pol	10	083905501223
4-3130	3	5	8	Various Print Bandana	12	083905431308
4-3131	3	5	9	Stars And Stripes Bandana	12	083905431315
4-3132	3	5	10	Camo Style Bandana	12	083905431322
3-7412	3	6	1	3/16" X 25' Twinline Hose	10	083905374124
3-7460	3	6	2	1/4" X 25' Twinline Hose	10	083905374605
3-7418	3	6	3	3/16" X 50' Twinline Hose	5	083905374186
3-7490	3	6	4	1/4" X 50' Twinline Hose	5	083905374902
4-2470	4	1	1	Clear Face Shield Ratchet Style	12	083905424706
4-2471	4	1	2	Green Face Shield Ratchet Style	12	083905424713
4-2480	4	1	3	9" X 15.5" Clear Replacement Shield	5	083905424805
4-2481	4	1	4	9" X 15.5" Green Replacement Shield	5	083905424812
4-2476	4	1	5	Ratchet Headgear For Faceshields	12	083905424768
4-2411	4	1	5	Elastic Headband For Goggle 4 Pk	5	083905424119
4-1101	4	2	1	2" X 4" Clear Plastic	5	083905411010
4-1105	4	2	2	2" X 4" No. 5 Welding Plate	5	083905411058
4-1109	4	2	3	2" X 4" No. 9 Welding Plate	5	083905411096
4-1110	4	2	4	2" X 4" No. 10 Welding Plate	5	083905411102
4-1170	4	2	5	2" X 4-1/4" Magnifier Lens 2.00	5	083905411706
4-1192	4	2	6	Gen li (2) Inner Lens For 4-1050	5	083905411928
4-1186	4	2	7	Inner Cover Lens 4-1070 To 4-1074	5	083905411867
4-1191	4	2	8	Gen li (2) Outer Lens 4-1050 To 4-1076	5	083905411911
4-1150	4	2	9	4" X 5" Clear Glass	5	083905411508
4-1151	4	2	10	4" X 5" Clear Plastic	5	083905411515
4-1159	4	2	11	4" X 5" No. 9 Welding Plate	5	083905411591
4-1160	4	2	12	4" X 5" No. 10 Welding Plate	5	083905411607
4-2450	4	3	1	Wraparound Safety Glasses Indoor/Outdoor	5	083905424508
4-2437	4	3	2	Ultra Fashion Safety Glass Tinted	5	083905424379
4-2436	4	3	3	Ultra Fashion Safety Glass Clear	5	083905424362
4-2456	4	3	4	Ultra Fashion Safety Glass Shaded 5.0	5	083905424560
4-2455	4	3	5	Wraparound Safety Glasses Tint	5	083905424553
4-2460	4	3	6	Visitor Safety Glasses Clear	5	083905424607
4-2400	4	4	1	Clear Safety Goggle	12	083905424003
4-2405	4	4	2	Clear Indirect Vent Safety Goggle	12	083905424058
4-2300	4	4	3	Shade 5 Goggle 2" X 4-1/4" Fixed Front	12	083905423006
4-2305	4	4	4	Shade 5 Goggle 2" X 4-1/4" Flip Front	12	083905423051
4-1201	4	4	5	Headgear For Conventional Helmets	12	083905412017
4-1002	4	5	1	Welding Helmet 2" X 4-1/4" Flip Front	6	083905410020
4-1004	4	5	2	Welding Helmet 4-1/2" X 5-1/4" Flip Front	6	083905410044
4-5205	4	5	3	Welders Safety Sleeve Cloth	1	083905452051



16' Welding Display

16' x 84" Welding Display Model No. 130-72304

K-T	Model No.	Section	Row	Item	Description	Shelf Pack	UPC
	4-5115	4	5	4	Leather Welding Apron 24" X 36"	1	083905451153
	4-5123	4	5	5	X-Lg Cape And Sleeve W/Bib	1	083905451238
	4-1050	4	6	1	Shade 9-13 Auto Darkening Helmet Black	4	083905410501
	4-1070	4	6	2	Phoenix 9-13 Adh Large View Area	4	083905410709
	4-1071	4	6	3	Flaming Skull 9-13 Adh Large View Area	4	083905410716
	4-1073	4	6	4	Independence 9-13 Adh Large View Area	4	083905410730

12' Welding Display



12' x 84" Welding Display Model No. 130-72303

This welding display is designed for retail environments that demand product selection and stock depth. It has a product mix that will fulfill most user's requests. This set is very capable of handling the medium to large sales volume. K-T's signage helps end users make the right buying decision as well as directing them to the right area and helps them make the right decision when purchasing K-T product.



Width:
48"

KT

TOOLS & WELDING SUPPLIES FOR THE PROFESSIONAL

ARC & MIG WELDING CENTER

LEATHER ROD HOLDER 4-5150	ARC 1-1121	ARC 1-1122	ARC 1-1321	ARC 1-1322	ARC 1-1422	ARC 1-1521	ARC 1-1522	ARC 1-1621	ARC 1-1341	ARC 1-1342	ARC 1-1708	ARC 1-1718	ARC 1-1728	ARC 1-1767	ARC 1-1768	ARC 1-1808	ARC 1-1810	200 AMP HOLDER 2-2120	
MIG 2-1515	MIG 2-1516	MIG 2-1517	MIG 2-1518	MIG 2-1520	MIG 2-1551	MIG 2-1552	MIG 2-1565	LUGS 2-2340	LUGS 2-2341	LUGS 2-2342	LUGS 2-2344	LUGS 2-2346	LUGS 2-2348	LUGS 2-2349	LUGS 2-2350	LUGS 2-2353	LUGS 2-2354	CROWFOOT RECEPTACLE 2-2650	CROWFOOT PLUG 2-2655
MARKING PENCIL 5-0068	MARK 5-0015	MARK 5-0042	MARK 5-0043	MARK 5-0045	MARK 5-0046	MARK 5-0047	MARK 5-0048	MARK 5-0061	MARK 5-0065	MARK 5-0080	MARK 5-0066	MARK 5-0085	TUNE UP CLAMPS 2-2478	CABLE CONNECTOR 2-2410	PIN TYPE RECEPTACLE 2-2656	PIN TYPE PLUG 2-2651			
MINI MAGNETS 5-1545	LARGE MAGNET 5-1555	300 AMP GROUND 2-2220	PICK SET 5-0060	MIG PLIER 5-1150	NOZZLE CLEANER 5-1140	CABLE CONNECT 2-2459	CABLE CONNECT 2-2451	CABLE SPLICER 2-2450				SPRAY GALV 2-2710							
MIG WIRE 1-3121	MIG WIRE 1-3123	MIG WIRE 1-3125	MIG WIRE 1-3153	MIG WIRE 1-3154	MIG WIRE 1-3313	BRAZING FLUX 2-2750	NOZZLE GEL 2-2700				ROD CANISTER 1-3500								
MIG WIRE 1-3131	MIG WIRE 1-3133	MIG WIRE 1-3135	MIG WIRE 1-3155	MIG WIRE 1-3156															
K-T Arc 1-1101	K-T Arc 1-1102	K-T Arc 1-1103	K-T Arc 1-1301	K-T Arc 1-1302	K-T Arc 1-1303	K-T Arc 1-1401	K-T Arc 1-1402	K-T Arc 1-1403	K-T Arc 1-1501	K-T Arc 1-1502	K-T Arc 1-1602								
K-T 1-1112	K-T 1-1113	K-T 1-1312	K-T 1-1412	K-T 1-1512	MIG WIRE 1-3143	WELDING CABLE 2-2511													

Height
84"

12' x 84" Welding Accessory Display Section 1
Model No. 130-72303

12' Welding Display



Width:
48"

TOOLS & WELDING SUPPLIES FOR THE PROFESSIONAL

OXY-ACETYLENE CENTER

300 AMP HOLDER	300 AMP GROUND	600 AMP BOOSTER	TORCH KIT					Oxy	Oxy	Oxy	Oxy	Oxy	Oxy	
2-2130	2-2260	2-2474	3-7100					5-1200	5-1300	5-1250	3-7303	3-7310	3-7340	3-7380

BRUSH SET
5-2201

CLEANING BRUSH
5-2315

ROD
1-5370

ROD
1-5118

ROD
1-5132

ROD
1-5219

ROD
1-5333

ROD
1-5319

Oxy
5-1205

Oxy
5-1305

Oxy
5-0040

Oxy
5-0070

Oxy
5-0075

Oxy
31-1270

Oxy
31-1271

Oxy
31-1271P

Oxy
31-1272

Oxy
31-1282

Oxy
32-1001

Oxy
32-1002

Oxy
32-1002P

Oxy
34-1261

Oxy
34-1262

Oxy
34-1263

Oxy
3-7526

ACETYLENE REGULATOR
3-7130

OXYGEN REGULATOR
3-7135

BRUSH
5-2205

BRUSH
5-2206

BRUSH
5-2207

BRUSH
5-2208

BRUSH
5-2210

BRUSH
5-2211

BRUSH
5-2215

BRUSH
5-2216

BRUSH
5-2220

BRUSH
5-2221

BRUSH
5-2222

BRUSH
5-2225

CHIP
5-1000

CHIP
5-1090

BRUSH
5-1100

WRENCH
5-0122

K-T TORCH KIT

31-5000

K-T TORCH KIT

31-5007

25' PIN EXTENSION CORD 2-2570

Tow Hose 3/16" x 25' 3-7412

Tow Hose 1/4" x 25' 3-7460

Tow Hose 1/4" x 50' 3-7490

Height
84"

12' x 84" Welding Accessory Display Section 2
Model No. 130-72303

www.ktindustries.net

15

12' Welding Display

Width: 48"

TOOLS & WELDING SUPPLIES FOR THE PROFESSIONAL

SAFETY EQUIPMENT CENTER

4" x 16 1/2" Deluxe Clear FaceShield		4" x 16 1/2" Deluxe Tinted FaceShield		Grey Welding Goggles		Blue Welding Goggles		Red Welding Goggles			
4-2470		4-2471		4-5005		4-5020		4-5030			
LENS	LENS	LENS	LENS	LENS	LENS	LENS	LENS	LENS	LENS		
4-1101	4-1105	4-1109	4-1110	4-1170	4-1192	4-1186	4-1191	4-1150	4-1151	4-1159	4-1160
Nosepiece Welding Mask		Facepiece Welding Mask		Delta Facepiece Mask		Square Jaw Mask		Triangle Mask		Cupped Mask	
4-2436		4-2437		4-2450		4-2456		4-2455		4-2460	
CAP 4-3126	CAP 4-3125	4-2400		4-2300		4-2305					
BANDANA 4-3130	BANDANA 4-3132	WELDING HELMET 4-1002		WELDING HELMET 4-1003		WELDING HELMET 4-1004		HeadGear 4-1201			
AUTO-DARKENING HELMET		AUTO-DARKENING HELMET		AUTO-DARKENING HELMET		AUTO-DARKENING HELMET					
4-1050		4-1070		4-1071		4-1073					

Height: 84"

12' x 84" Welding Accessory Display Section 3
Model No. 130-72303

12' Welding Display



12' x 72" Welding Display Model No. 130-72303

K-T	Model No.	Section	Row	Item	Description	Shelf Pack	UPC
	4-5150	1	1	1	Leather Rod Holder	5	083905451504
	1-1121	1	1	2	6011 Electrode 1 Lb 3/32"	25	083905111217
	1-1122	1	1	3	6011 Electrode 1 Lb 1/8"	25	083905111224
	1-1321	1	1	4	6013 Electrode 1 Lb 3/32"	25	083905113211
	1-1322	1	1	5	6013 Electrode 1 Lb 1/8"	25	083905113228
	1-1422	1	1	6	7014 Electrode 1 Lb 1/8"	25	083905114225
	1-1521	1	1	7	7018 Electrode 1 Lb 3/32"	25	083905115215
	1-1522	1	1	8	7018 Electrode 1 Lb 1/8"	25	083905115222
	1-1621	1	1	9	7018 Ac Electrode 1 Lb 3/32"	25	083905116212
	1-1341	1	1	10	6013 Electrode 1/2 Lb 1/16"	25	083905113419
	1-1342	1	1	11	6013 Electrode 1/2 Lb 5/64"	25	083905113426
	1-1708	1	1	12	Nickel 55 1/8" Value Pack 3Pc	25	083905117080
	1-1718	1	1	13	Cast Iron Electrode 1/8" Value Pack 10Pc	25	083905117189
	1-1728	1	1	14	Nickel 99 1/8" Value Pack 3Pc	25	083905117288
	1-1767	1	1	15	Stainless Steel 312 3/32" Value Pack 8Pc	25	083905117677
	1-1768	1	1	16	Stainless Steel 312 1/8" Value Pack 4 Pc	25	083905117684
	1-1808	1	1	17	Aluminum Electrode 1/8" Value Pack 6 Pc	25	083905118087
	1-1810	1	1	18	Alum Pro Brazing Rod 15 Pc	25	083905118100
	2-2120	1	1	19	200 Amp Electrode Holder	5	083905221206
	2-1515	1	2	1	Tweeco Gas Diffuser Each	5	083905215151
	2-1516	1	2	2	Tweeco 11 Tip .023 5 Pk	5	083905215168
	2-1517	1	2	3	Tweeco 11 Tip .030 5 Pk	5	083905215175
	2-1518	1	2	4	Tweeco 11 Tip .035 5 Pk	5	083905215182
	2-1520	1	2	5	Tweeco Nozzle 1/2" Each	5	083905215205
	2-1551	1	2	6	.030 Contact Tip Hobart 5Pk	5	083905215519
	2-1552	1	2	7	.035 Contact Tip Hobart 5Pk	5	083905215526
	2-1565	1	2	8	1/2" Hobart Style Nozzle	5	083905215656
	2-2340	1	2	9	Cable Lug Size 8 X No. 10 2 Pk	5	083905223408
	2-2341	1	2	10	Cable Lug Size 6 X 1/4 2 Pk	5	083905223415
	2-2342	1	2	11	Cable Lug Size 4 X 3/8 2 Pk	5	083905223422
	2-2344	1	2	12	Cable Lug Size 2 X 3/8 2 Pk	5	083905223446
	2-2346	1	2	13	Cable Lug Size 1 X 3/8 2 Pk	5	083905223460
	2-2348	1	2	14	Cable Lug Size 1/0 X 3/8 2Pk	5	083905223484
	2-2349	1	2	15	Cable Lug Size 2/0 X 1/2 2Pk	5	083905223491
	2-2350	1	2	16	Cable Lug Size 2/0 X 3/8 2Pk	5	083905223507
	2-2353	1	2	17	Cable Lug Size 4 X 5/16 2 Pk	5	083905223538
	2-2354	1	2	18	Cable Lug Size 2 X 5/16 2 Pk	5	083905223545
	2-2650	1	2	19	Crowfoot Rectptacle 50 Amps	10	083905226508
	2-2655	1	2	20	Crowfoot Male Plug 50 Amps	10	083905226553
	5-0068	1	3	1	Silver Marking Pencil 3 Pk	5	083905500684
	5-0015	1	3	2	Premium Scribe	5	083905500158
	5-0042	1	3	3	Solid Yellow Paint Stick 2 Pk	5	083905500424
	5-0043	1	3	4	Solid White Paint Sticks 2 Pk	5	083905500431
	5-0045	1	3	5	Yellow Liquid Paint Marker	5	083905500455
	5-0046	1	3	6	White Liquid Paint Marker	5	083905500462
	5-0047	1	3	7	Black Liquid Paint Marker	5	083905500479
	5-0048	1	3	8	Red Liquid Paint Marker	5	083905500486
	5-0061	1	3	9	Thin Line Marking Pencil	5	083905500615
	5-0065	1	3	10	Flat Soap Stone Holder	5	083905500653
	5-0080	1	3	11	Flat Soap Stone 5 Pk	5	083905500806
	5-0066	1	3	12	Round Soap Stone Holder	5	083905500660
	5-0085	1	3	13	Round Soap Stone 5 Pk	5	083905500851



12' Welding Display

12' x 84" Welding Display Model No. 130-72303

K-T Model No.	Section	Row	Item	Description	Shelf Pack	UPC
2-2478	1	3	14	50 Amp Tune Up Clamps	5	083905224788
2-2410	1	3	15	Cable Connector Set 4-1/0 Black	5	083905224108
2-2656	1	3	16	Pin Receptacle 50 Amps	10	083905226560
2-2651	1	3	17	Pin Male Plug 50 Amps	10	083905226515
5-1545	1	4	1	4 Pc Mini Magnetic Holder Set	5	083905515459
5-1555	1	4	2	Large Magnetic Holder	5	083905515558
2-2220	1	4	3	200 Amp Copper Gr Clamp	5	083905222203
5-0060	1	4	4	4 Way Pick Set	5	083905500608
5-1150	1	4	5	Mig Plier	5	083905511505
5-1140	1	4	6	Mig Nozzle Cleaner	5	083905511406
2-2459	1	4	7	Cable Splicer 4-1/0	5	083905224597
2-2451	1	4	8	Universal Male Machine Plug 4-1/0 Red	5	083905224511
2-2450	1	4	9	Universal Male Machine Plug 4-1/0 Black	5	083905224504
1-3121	1	5	1	Mild Steel Mig Wire 70S-6 .023 2 Lb	20	083905131215
1-3123	1	5	2	Mild Steel Mig Wire 70S-6 .030 2 Lb	20	083905131239
1-3125	1	5	3	Mild Steel Mig Wire 70S-6 .035 2 Lb	20	083905131253
1-3153	1	5	4	Gasless Flux Core Mig Wire .030 2 Lb	20	083905131536
1-3154	1	5	5	Gasless Flux Core Mig Wire .035 2 Lb	20	083905131543
1-3313	1	5	6	Aluminum 5356 .035 Mig Wire 1 Lb	20	083905133134
2-2750	1	5	7	Brazing Flux 1/2 Lb.	32	083905227505
2-2700	1	5	8	Nozzel Gel 16 Oz	12	083905227000
2-2710	1	5	9	Anti-Spatter Spray 16 Oz	12	083905227109
1-3131	1	6	1	Mild Steel Mig Wire 70S-6 .023 10 Lb	1	083905131314
1-3133	1	6	2	Mild Steel Mig Wire 70S-6 .030 10 Lb	1	083905131338
1-3135	1	6	3	Mild Steel Mig Wire 70S-6 .035 10 Lb	1	083905131352
1-3155	1	6	4	Gasless Flux Core Mig Wire .030 10 Lb	1	083905131550
1-3156	1	6	5	Gasless Flux Core Mig Wire .035 10 Lb	1	083905131567
1-1101	1	7	1	6011 Electrode 5 Lb 3/32"	10	083905111019
1-1102	1	7	2	6011 Electrode 5 Lb 1/8"	10	083905111026
1-1103	1	7	3	6011 Electrode 5 Lb 5/32"	10	083905111033
1-1301	1	7	4	6013 Electrode 5 Lb 3/32"	10	083905113013
1-1302	1	7	5	6013 Electrode 5 Lb 1/8"	10	083905113020
1-1303	1	7	6	6013 Electrode 5 Lb 5/32"	10	083905113037
1-1401	1	7	7	7014 Electrode 5 Lb 3/32"	10	083905114010
1-1402	1	7	8	7014 Electrode 5 Lb 1/8"	10	083905114027
1-1403	1	7	9	7014 Electrode 5 Lb 5/32"	10	083905114034
1-1501	1	7	10	7018 Electrode 5 Lb 3/32"	10	083905115017
1-1502	1	7	11	7018 Electrode 5 Lb 1/8"	10	083905115024
1-1602	1	7	12	7018 Ac Electrode 5 Lb 1/8"	10	083905116021
1-3500	1	7	13	14" Rod Canister W/Dividers	24	083905135008
1-1112	1	8	1	6011 Electrode 10Lb 1/8"	6	083905111125
1-1113	1	8	2	6011 Electrode 10Lb 5/32"	6	083905111132
1-1312	1	8	3	6013 Electrode 10 Lb 1/8"	6	083905113129
1-1412	1	8	4	7014 Electrode 10Lb 1/8"	6	083905114126
1-1512	1	8	5	7018 Electrode 10Lb 1/8"	5	083905115123
1-3143	1	8	6	Mild Steel Mig Wire 70S-6 .035 33 Lb	1	083905131437
2-2511	1	8	7	No. 1 Welding Cable 50' Box	50'	083905225112
2-2130	2	1	1	300 Amp Electrode Holder	5	083905221305
2-2260	2	1	2	300 Amp Steel Gr Clamp	5	083905222609
2-2474	2	1	3	600 Amp Battery Chgr Clamps	5	083905224740
3-7100	2	1	4	K-T Cutting Torch Kit UI	1	083905371000
5-1200	2	1	5	Single Flint Striker	5	083905512007

12' Welding Display



12' x 84" Welding Display Model No. 130-72303

K-T Model No.	Section	Row	Item	Description	Shelf Pack	UPC
5-1300	2	1	6	Three Flint Striker	5	083905513004
5-1250	2	1	7	Electronic Spark Lighter	5	083905512502
3-7303	2	1	8	2"Pressure Gauge 30 Lb. Acetylene	5	083905373035
3-7340	2	1	8	2"Pressure Gauge 400 Lb. Acetylene	5	083905373400
3-7310	2	1	9	2" Pressure Gauge 100 Lb. Oxygen	5	083905373103
3-7380	2	1	9	2"Pressure Gauge 4000 Lb Oxygen	5	083905373806
5-2205	2	2	1	Small Stainless Steel Cleaning Brush	5	083905522051
5-2206	2	2	2	Small Brass Cleaning Brush	5	083905522068
5-2207	2	2	3	Angled Head Stainless Steel Cleaning Brush	5	083905522075
5-2208	2	2	4	Angled Head Brass Cleaning Brush	5	083905522082
5-2201	2	2	5	3 Pc Plastic Stainless Steel Cleaning Brush Set	5	083905522013
1-5370	2	2	6	Phos-Copper-Silver Brazingalloys 1/2 Lb.	25	083905153705
1-5118	2	2	7	Rg-45 Mild Steel 36" 1 Lb 1/8"	25	083905151183
1-5132	2	2	8	Rg-45 Mild Steel 36" 1 Lb 3/32"	25	083905151329
1-5219	2	2	9	Bare Bronze 1/8" 5 Pc 36"	25	083905152197
1-5333	2	2	10	Flux Coated Bronze 3/32" 5 Pc 36"	25	083905153330
1-5319	2	2	11	Flux Coated Bronze 1/8" 5 Pc 36"	25	083905153194
5-1205	2	2	12	Single Flint Replacements 5 Pk	5	083905512052
5-1305	2	2	13	Three Flint Replacement Flints 4 Pk	5	083905513059
5-0040	2	2	14	Tip Drill	5	083905500400
5-0070	2	2	15	Standard Tip Cleaner	5	083905500707
5-0075	2	2	16	Long Tip Cleaner	5	083905500752
5-2210	2	3	1	Shoe Handle Carbon Steel Brush	12	083905522105
5-2211	2	3	2	Shoe Handle Carbon Steel Brush With Scraper	12	083905522112
5-2215	2	3	3	Shoe Handle Stainless Steel Brush	12	083905522150
5-2216	2	3	4	Shoe Handle Brass Brush	12	083905522167
5-2315	2	3	5	Deluxe Parts Cleaning Brush	12	083905523157
31-1270	2	3	6	Victor Style Cutting Tip Size 0, 3-101	5	083905712704
31-1271	2	3	7	Victor Style Cutting Tip Size 1, 3-101	5	083905712711
31-1271P	2	3	8	Victor Style 3Gpn Size 1 Propane	5	083905712520
31-1272	2	3	9	Victor Style Cutting Tip Size 2, 3-101	5	083905712728
31-1282	2	3	10	Victor Style Cutting Tip Size 2, 1-101	5	083905712827
32-1001	2	3	11	Harris Cutting Tip Size 1, 6290	5	083905610017
3-7130	2	3	12	Acetylene Regulator	5	083905371307
5-2220	2	4	1	Bent Handle Carbon Steel Brush	12	083905522204
5-2221	2	4	2	Bent Handle Carbon Steel Brush With Scraper	12	083905522211
5-2222	2	4	3	V Groove Carbon Steel Scratch Brush	12	083905522228
5-2225	2	4	4	Bent Handle Stainless Steel Brush	12	083905522259
32-1002	2	4	5	Harris Cutting Tip Size 2, 6290	5	083905610024
32-1002P	2	4	6	Harris Propane Cutting Tip Size 2, 6290Nx	5	083905610123
34-1261	2	4	7	Smith Cutting Tip Size 1, Mc-12	5	083905714616
34-1262	2	4	8	Smith Cutting Tip Size 2, Mc-12	5	083905714623
34-1263	2	4	9	Smith Cutting Tip Size 3, Mc-12	5	083905714630
3-7526	2	4	10	Hose Coupler Kit	5	083905375268
3-7135	2	4	11	Oxygen Regulator	5	083905371352
21-6213	2	5	1	8" Welding Locking Plier	5	083905662139
21-6212	2	5	2	11" Locking C Clamp	5	083905662122
5-1000	2	5	3	Spring Handle Chipping Hammer	10	083905510003
5-1100	2	5	4	Brush For Chipping Hammers	5	083905511000
5-1090	2	5	5	Chipping Hammer With Brush	1	083905510904
5-0122	2	5	6	T Wrench 9/32" Pol	10	083905501223
31-5000	2	6	1	Victor Style Med. Duty Torch Kit	2	083905650006

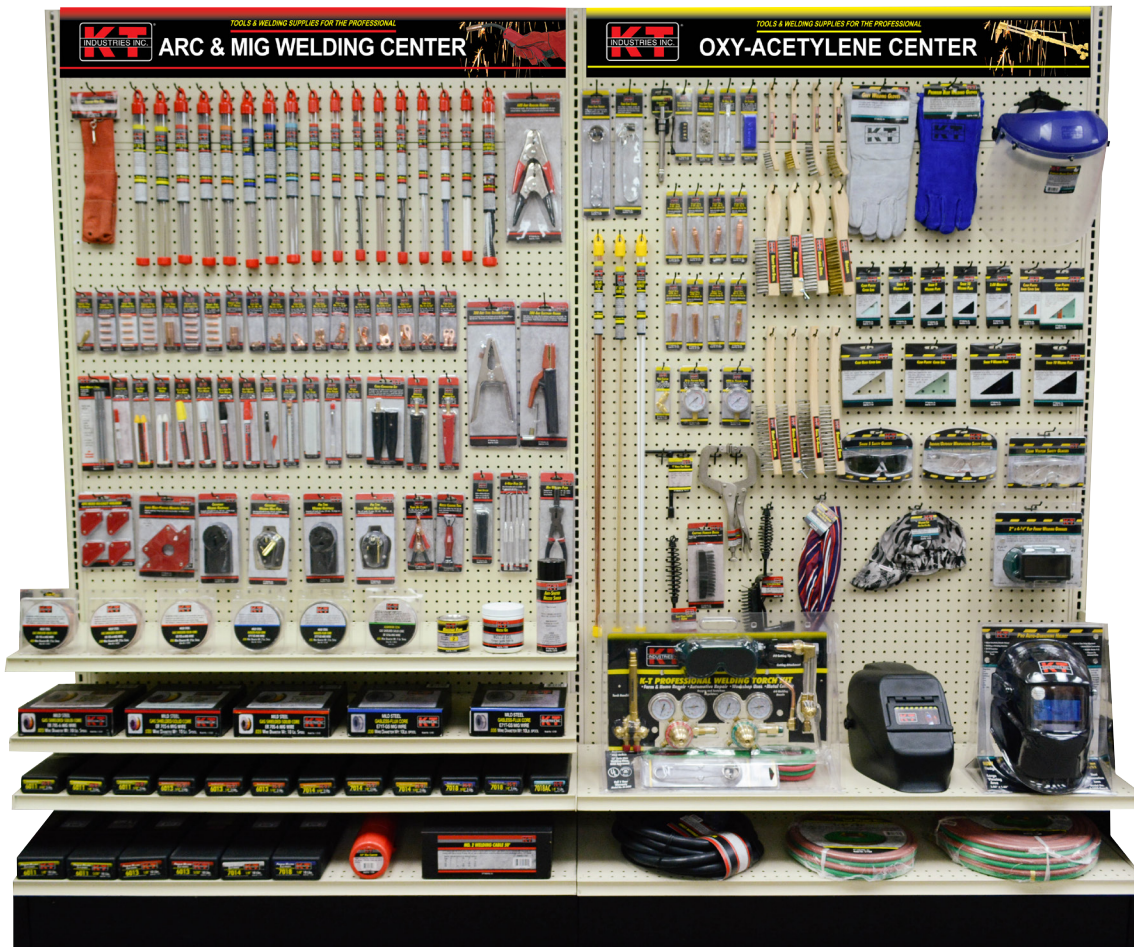


12' Welding Display

12' x 84" Welding Display Model No. 130-72303

K-T Model No.	Section	Row	Item	Description	Shelf Pack	UPC
31-5007	2	6	2	Deluxe Harris Style Med. Duty Torch Kit	2	083905650273
2-2570	2	7	1	25' 8/3 Pin Extension Cord	1	083905225709
3-7412	2	7	2	3/16" X 25' Twinline Hose	10	083905374124
3-7460	2	7	3	1/4" X 25' Twinline Hose	10	083905374605
3-7490	2	7	4	1/4" X 50' Twinline Hose	5	083905374902
4-2470	4	1	1	Clear Face Shield Ratchet Style	12	083905424706
4-2471	4	1	2	Green Face Shield Ratchet Style	12	083905424713
4-5005	4	1	3	Grey Welders Gloves	12	083905450057
4-5020	4	1	4	Premium Grade Welding Glove Blue	12	083905450200
4-5030	4	1	5	Mig Glove	12	083905450309
4-1101	4	2	1	2" X 4" Clear Plastic	5	083905411010
4-1105	4	2	2	2" X 4" No. 5 Welding Plate	5	083905411058
4-1109	4	2	3	2" X 4" No. 9 Welding Plate	5	083905411096
4-1110	4	2	4	2" X 4" No. 10 Welding Plate	5	083905411102
4-1170	4	2	5	2" X 4-1/4" Magnifier Lens 2.00	5	083905411706
4-1192	4	2	6	Gen li (2) Inner Lens For 4-1050	5	083905411928
4-1186	4	2	7	Inner Cover Lens 4-1070 To 4-1074	5	083905411867
4-1191	4	2	8	Gen li (2) Outer Lens 4-1050 To 4-1076	5	083905411911
4-1150	4	2	9	4" X 5" Clear Glass	5	083905411508
4-1151	4	2	10	4" X 5" Clear Plastic	5	083905411515
4-1159	4	2	11	4" X 5" No. 9 Welding Plate	5	083905411591
4-1160	4	2	12	4" X 5" No. 10 Welding Plate	5	083905411607
4-2436	4	3	1	Ultra Fashion Safety Glass Clear	5	083905424362
4-2437	4	3	2	Ultra Fashion Safety Glass Tinted	5	083905424379
4-2450	4	3	3	Wraparound Safety Glasses Indoor/Outdoor	5	083905424508
4-2456	4	3	4	Ultra Fashion Safety Glass Shaded 5.0	5	083905424560
4-2455	4	3	5	Wraparound Safety Glasses Tint	5	083905424553
4-2460	4	3	6	Visitor Safety Glasses Clear	5	083905424607
4-3126	4	4	1	Stars And Stripes Caps Universal Size	12	083905431261
4-3125	4	4	2	Universal Size Welders Cap	12	083905431254
4-2400	4	4	4	Clear Safety Goggle	12	083905424003
4-2300	4	4	5	Shade 5 Goggle 2" X 4-1/4" Fixed Front	12	083905423006
4-2305	4	4	6	Shade 5 Goggle 2" X 4-1/4" Flip Front	12	083905423051
4-3130	4	5	1	Various Print Bandana	12	083905431308
4-3132	4	5	2	Camo Style Bandana	12	083905431322
4-1002	4	5	3	Welding Helmet 2" X 4-1/4" Flip Front	6	083905410020
4-1003	4	5	4	Welding Helmet 4-1/2" X 5-1/4" Fixed Front	6	083905410037
4-1004	4	5	5	Welding Helmet 4-1/2" X 5-1/4" Flip Front	6	083905410044
4-1201	4	5	6	Headgear For Conventional Helmets	12	083905412017
4-1050	4	6	1	Shade 9-13 Auto Darkening Helmet Black	4	083905410501
4-1070	4	6	2	Phoenix 9-13 Adh Large View Area	4	083905410709
4-1071	4	6	3	Flaming Skull 9-13 Adh Large View Area	4	083905410716
4-1073	4	6	4	Independence 9-13 Adh Large View Area	4	083905410730

8' Welding Display



8' x 84" Welding Display Model No. 130-72304

This welding display is designed for retail environments with a product mix that will fulfill most home and hardware user's requests. This set is capable of handling the medium sales volume. KT's signage helps end users make the right buying decision as well as directing them to the right area and helps them make the right decision when purchasing K-T product.



Width:
48"

TOOLS & WELDING SUPPLIES FOR THE PROFESSIONAL

ARC & MIG WELDING CENTER

LEATHER ROD HOLDER 4-5150	ARC 1-1121	ARC 1-1122	ARC 1-1321	ARC 1-1322	ARC 1-1422	ARC 1-1521	ARC 1-1522	ARC 1-1621	ARC 1-1341	ARC 1-1342	ARC 1-1708	ARC 1-1718	ARC 1-1728	ARC 1-1767	ARC 1-1768	ARC 1-1808	ARC 1-1810	200 AMP HOLDER 2-2120	
MIG 2-1515	MIG 2-1516	MIG 2-1517	MIG 2-1518	MIG 2-1520	MIG 2-1551	MIG 2-1552	MIG 2-1565	LUGS 2-2340	LUGS 2-2341	LUGS 2-2342	LUGS 2-2344	LUGS 2-2346	LUGS 2-2348	LUGS 2-2349	LUGS 2-2350	LUGS 2-2353	LUGS 2-2354	200 AMP HOLDER 2-2120	300 AMP GROUND 2-2260
MARKING PENCIL 5-0068	MARK 5-0015	MARK 5-0042	MARK 5-0043	MARK 5-0045	MARK 5-0046	MARK 5-0047	MARK 5-0048	MARK 5-0061	MARK 5-0065	MARK 5-0080	MARK 5-0066	MARK 5-0085	CABLE CONNECTOR 2-2410	CABLE SPLICER 2-2450	CABLE CONNECT 2-2451				
MINI MAGNETS 5-1545	LARGE MAGNET 5-1555	CROWFOOT RECEPTACLE 2-2650	CROWFOOT PLUG 2-2655	PIN TYPE RECEPTACLE 2-2656	PIN TYPE PLUG 2-2651	TUNE UP CLAMPS 2-2478	NOZZLE CLEANER 5-1140	CABLE CONNECT 2-2459	PICK SET 5-0060	MIG PLIER 5-1150									
MIG WIRE 1-3121	MIG WIRE 1-3123	MIG WIRE 1-3125	MIG WIRE 1-3153	MIG WIRE 1-3154	MIG WIRE 1-3313	BRAZING FLUX 2-2750	NOZZLE GEL 2-2700	SPRAY GALV 2-2710											
MIG WIRE 1-3131	MIG WIRE 1-3133	MIG WIRE 1-3135	MIG WIRE 1-3155	MIG WIRE 1-3156															
K-T Arc 1-1101	K-T Arc 1-1102	K-T Arc 1-1103	K-T Arc 1-1301	K-T Arc 1-1302	K-T Arc 1-1303	K-T Arc 1-1401	K-T Arc 1-1402	K-T Arc 1-1403	K-T Arc 1-1501	K-T Arc 1-1502	K-T Arc 1-1602								
K-T 1-1112	K-T 1-1113	K-T 1-1312	K-T 1-1313	K-T 1-1412	K-T 1-1512	ROD CANISTER 1-3500	WELDING CABLE 2-2511												

Height:
84"

8' x 84" Welding Accessory Display Section 1
Model No. 130-72302

8' Welding Display



Width:
48"

TOOLS & WELDING SUPPLIES FOR THE PROFESSIONAL

OXY-ACETYLENE CENTER

<div style="background-color: #ccc; padding: 5px; border: 1px solid black; margin-bottom: 5px;">Oxy</div> <div style="background-color: #ccc; padding: 5px; border: 1px solid black; margin-bottom: 5px;">5-1200</div>	<div style="background-color: #ccc; padding: 5px; border: 1px solid black; margin-bottom: 5px;">Oxy</div> <div style="background-color: #ccc; padding: 5px; border: 1px solid black; margin-bottom: 5px;">5-1300</div>	<div style="background-color: #ccc; padding: 5px; border: 1px solid black; margin-bottom: 5px;">Oxy</div> <div style="background-color: #ccc; padding: 5px; border: 1px solid black; margin-bottom: 5px;">5-1250</div>	<div style="background-color: #ccc; padding: 5px; border: 1px solid black; margin-bottom: 5px;">Oxy</div> <div style="background-color: #ccc; padding: 5px; border: 1px solid black; margin-bottom: 5px;">5-1205</div>	<div style="background-color: #ccc; padding: 5px; border: 1px solid black; margin-bottom: 5px;">Oxy</div> <div style="background-color: #ccc; padding: 5px; border: 1px solid black; margin-bottom: 5px;">5-1305</div>	<div style="background-color: #ccc; padding: 5px; border: 1px solid black; margin-bottom: 5px;">Oxy</div> <div style="background-color: #ccc; padding: 5px; border: 1px solid black; margin-bottom: 5px;">5-0040</div>	<div style="background-color: #ccc; padding: 5px; border: 1px solid black; margin-bottom: 5px;">Oxy</div> <div style="background-color: #ccc; padding: 5px; border: 1px solid black; margin-bottom: 5px;">5-0070</div>	<div style="background-color: #ccc; padding: 5px; border: 1px solid black; margin-bottom: 5px;">BRUSH</div> <div style="background-color: #ccc; padding: 5px; border: 1px solid black; margin-bottom: 5px;">5-2205</div>	<div style="background-color: #ccc; padding: 5px; border: 1px solid black; margin-bottom: 5px;">BRUSH</div> <div style="background-color: #ccc; padding: 5px; border: 1px solid black; margin-bottom: 5px;">5-2206</div>	<div style="background-color: #ccc; padding: 5px; border: 1px solid black; margin-bottom: 5px;">BRUSH</div> <div style="background-color: #ccc; padding: 5px; border: 1px solid black; margin-bottom: 5px;">5-2207</div>	<div style="background-color: #ccc; padding: 5px; border: 1px solid black; margin-bottom: 5px;">BRUSH</div> <div style="background-color: #ccc; padding: 5px; border: 1px solid black; margin-bottom: 5px;">5-2208</div>	<div style="background-color: #ccc; padding: 5px; border: 1px solid black; margin-bottom: 5px;">LENS</div> <div style="background-color: #ccc; padding: 5px; border: 1px solid black; margin-bottom: 5px;">4-5005</div>	<div style="background-color: #ccc; padding: 5px; border: 1px solid black; margin-bottom: 5px;">LENS</div> <div style="background-color: #ccc; padding: 5px; border: 1px solid black; margin-bottom: 5px;">4-5020</div>	<div style="background-color: #ccc; padding: 5px; border: 1px solid black; margin-bottom: 5px;">LENS</div> <div style="background-color: #ccc; padding: 5px; border: 1px solid black; margin-bottom: 5px;">4-2470</div>				
<div style="background-color: #ccc; padding: 5px; border: 1px solid black; margin-bottom: 5px;">Rod</div> <div style="background-color: #ccc; padding: 5px; border: 1px solid black; margin-bottom: 5px;">1-5132</div>	<div style="background-color: #ccc; padding: 5px; border: 1px solid black; margin-bottom: 5px;">Rod</div> <div style="background-color: #ccc; padding: 5px; border: 1px solid black; margin-bottom: 5px;">1-5219</div>	<div style="background-color: #ccc; padding: 5px; border: 1px solid black; margin-bottom: 5px;">Rod</div> <div style="background-color: #ccc; padding: 5px; border: 1px solid black; margin-bottom: 5px;">1-5319</div>	<div style="background-color: #ccc; padding: 5px; border: 1px solid black; margin-bottom: 5px;">Oxy</div> <div style="background-color: #ccc; padding: 5px; border: 1px solid black; margin-bottom: 5px;">31-1270</div>	<div style="background-color: #ccc; padding: 5px; border: 1px solid black; margin-bottom: 5px;">Oxy</div> <div style="background-color: #ccc; padding: 5px; border: 1px solid black; margin-bottom: 5px;">31-1271</div>	<div style="background-color: #ccc; padding: 5px; border: 1px solid black; margin-bottom: 5px;">Oxy</div> <div style="background-color: #ccc; padding: 5px; border: 1px solid black; margin-bottom: 5px;">31-1272</div>	<div style="background-color: #ccc; padding: 5px; border: 1px solid black; margin-bottom: 5px;">Oxy</div> <div style="background-color: #ccc; padding: 5px; border: 1px solid black; margin-bottom: 5px;">31-1282</div>	<div style="background-color: #ccc; padding: 5px; border: 1px solid black; margin-bottom: 5px;">BRUSH</div> <div style="background-color: #ccc; padding: 5px; border: 1px solid black; margin-bottom: 5px;">5-2210</div>	<div style="background-color: #ccc; padding: 5px; border: 1px solid black; margin-bottom: 5px;">BRUSH</div> <div style="background-color: #ccc; padding: 5px; border: 1px solid black; margin-bottom: 5px;">5-2211</div>	<div style="background-color: #ccc; padding: 5px; border: 1px solid black; margin-bottom: 5px;">BRUSH</div> <div style="background-color: #ccc; padding: 5px; border: 1px solid black; margin-bottom: 5px;">5-2215</div>	<div style="background-color: #ccc; padding: 5px; border: 1px solid black; margin-bottom: 5px;">BRUSH</div> <div style="background-color: #ccc; padding: 5px; border: 1px solid black; margin-bottom: 5px;">5-2216</div>	<div style="background-color: #ccc; padding: 5px; border: 1px solid black; margin-bottom: 5px;">LENS</div> <div style="background-color: #ccc; padding: 5px; border: 1px solid black; margin-bottom: 5px;">4-1101</div>	<div style="background-color: #ccc; padding: 5px; border: 1px solid black; margin-bottom: 5px;">LENS</div> <div style="background-color: #ccc; padding: 5px; border: 1px solid black; margin-bottom: 5px;">4-1105</div>	<div style="background-color: #ccc; padding: 5px; border: 1px solid black; margin-bottom: 5px;">LENS</div> <div style="background-color: #ccc; padding: 5px; border: 1px solid black; margin-bottom: 5px;">4-1109</div>	<div style="background-color: #ccc; padding: 5px; border: 1px solid black; margin-bottom: 5px;">LENS</div> <div style="background-color: #ccc; padding: 5px; border: 1px solid black; margin-bottom: 5px;">4-1110</div>	<div style="background-color: #ccc; padding: 5px; border: 1px solid black; margin-bottom: 5px;">LENS</div> <div style="background-color: #ccc; padding: 5px; border: 1px solid black; margin-bottom: 5px;">4-1170</div>	<div style="background-color: #ccc; padding: 5px; border: 1px solid black; margin-bottom: 5px;">LENS</div> <div style="background-color: #ccc; padding: 5px; border: 1px solid black; margin-bottom: 5px;">4-1192</div>	<div style="background-color: #ccc; padding: 5px; border: 1px solid black; margin-bottom: 5px;">LENS</div> <div style="background-color: #ccc; padding: 5px; border: 1px solid black; margin-bottom: 5px;">4-1191</div>
<div style="background-color: #ccc; padding: 5px; border: 1px solid black; margin-bottom: 5px;">Oxy</div> <div style="background-color: #ccc; padding: 5px; border: 1px solid black; margin-bottom: 5px;">3-7526</div>	<div style="background-color: #ccc; padding: 5px; border: 1px solid black; margin-bottom: 5px;">Oxy</div> <div style="background-color: #ccc; padding: 5px; border: 1px solid black; margin-bottom: 5px;">3-7303</div>	<div style="background-color: #ccc; padding: 5px; border: 1px solid black; margin-bottom: 5px;">Oxy</div> <div style="background-color: #ccc; padding: 5px; border: 1px solid black; margin-bottom: 5px;">3-7380</div>	<div style="background-color: #ccc; padding: 5px; border: 1px solid black; margin-bottom: 5px;">Oxy</div> <div style="background-color: #ccc; padding: 5px; border: 1px solid black; margin-bottom: 5px;">32-1001</div>	<div style="background-color: #ccc; padding: 5px; border: 1px solid black; margin-bottom: 5px;">Oxy</div> <div style="background-color: #ccc; padding: 5px; border: 1px solid black; margin-bottom: 5px;">32-1002</div>	<div style="background-color: #ccc; padding: 5px; border: 1px solid black; margin-bottom: 5px;">Oxy</div> <div style="background-color: #ccc; padding: 5px; border: 1px solid black; margin-bottom: 5px;">32-1002P</div>	<div style="background-color: #ccc; padding: 5px; border: 1px solid black; margin-bottom: 5px;">Oxy</div> <div style="background-color: #ccc; padding: 5px; border: 1px solid black; margin-bottom: 5px;">34-1261</div>	<div style="background-color: #ccc; padding: 5px; border: 1px solid black; margin-bottom: 5px;">BRUSH</div> <div style="background-color: #ccc; padding: 5px; border: 1px solid black; margin-bottom: 5px;">5-2220</div>	<div style="background-color: #ccc; padding: 5px; border: 1px solid black; margin-bottom: 5px;">BRUSH</div> <div style="background-color: #ccc; padding: 5px; border: 1px solid black; margin-bottom: 5px;">5-2221</div>	<div style="background-color: #ccc; padding: 5px; border: 1px solid black; margin-bottom: 5px;">BRUSH</div> <div style="background-color: #ccc; padding: 5px; border: 1px solid black; margin-bottom: 5px;">5-2222</div>	<div style="background-color: #ccc; padding: 5px; border: 1px solid black; margin-bottom: 5px;">BRUSH</div> <div style="background-color: #ccc; padding: 5px; border: 1px solid black; margin-bottom: 5px;">5-2225</div>	<div style="background-color: #ccc; padding: 5px; border: 1px solid black; margin-bottom: 5px;">LENS</div> <div style="background-color: #ccc; padding: 5px; border: 1px solid black; margin-bottom: 5px;">4-1150</div>	<div style="background-color: #ccc; padding: 5px; border: 1px solid black; margin-bottom: 5px;">LENS</div> <div style="background-color: #ccc; padding: 5px; border: 1px solid black; margin-bottom: 5px;">4-1151</div>	<div style="background-color: #ccc; padding: 5px; border: 1px solid black; margin-bottom: 5px;">LENS</div> <div style="background-color: #ccc; padding: 5px; border: 1px solid black; margin-bottom: 5px;">4-1159</div>	<div style="background-color: #ccc; padding: 5px; border: 1px solid black; margin-bottom: 5px;">LENS</div> <div style="background-color: #ccc; padding: 5px; border: 1px solid black; margin-bottom: 5px;">4-1160</div>			
<div style="background-color: #ccc; padding: 5px; border: 1px solid black; margin-bottom: 5px;">CHIP</div> <div style="background-color: #ccc; padding: 5px; border: 1px solid black; margin-bottom: 5px;">5-1000</div>	<div style="background-color: #ccc; padding: 5px; border: 1px solid black; margin-bottom: 5px;">CHIP</div> <div style="background-color: #ccc; padding: 5px; border: 1px solid black; margin-bottom: 5px;">5-1090</div>	<div style="background-color: #ccc; padding: 5px; border: 1px solid black; margin-bottom: 5px;">BRUSH</div> <div style="background-color: #ccc; padding: 5px; border: 1px solid black; margin-bottom: 5px;">5-1100</div>	<div style="background-color: #ccc; padding: 5px; border: 1px solid black; margin-bottom: 5px;">LOCK</div> <div style="background-color: #ccc; padding: 5px; border: 1px solid black; margin-bottom: 5px;">21-8212</div>	<div style="background-color: #ccc; padding: 5px; border: 1px solid black; margin-bottom: 5px;">BANDANA</div> <div style="background-color: #ccc; padding: 5px; border: 1px solid black; margin-bottom: 5px;">4-3131</div>	<div style="background-color: #ccc; padding: 5px; border: 1px solid black; margin-bottom: 5px;">CAP</div> <div style="background-color: #ccc; padding: 5px; border: 1px solid black; margin-bottom: 5px;">4-3125</div>	<div style="background-color: #ccc; padding: 5px; border: 1px solid black; margin-bottom: 5px;">LENS</div> <div style="background-color: #ccc; padding: 5px; border: 1px solid black; margin-bottom: 5px;">4-2305</div>	<div style="background-color: #ccc; padding: 5px; border: 1px solid black; margin-bottom: 5px;">LENS</div> <div style="background-color: #ccc; padding: 5px; border: 1px solid black; margin-bottom: 5px;">4-2456</div>	<div style="background-color: #ccc; padding: 5px; border: 1px solid black; margin-bottom: 5px;">LENS</div> <div style="background-color: #ccc; padding: 5px; border: 1px solid black; margin-bottom: 5px;">4-2450</div>	<div style="background-color: #ccc; padding: 5px; border: 1px solid black; margin-bottom: 5px;">LENS</div> <div style="background-color: #ccc; padding: 5px; border: 1px solid black; margin-bottom: 5px;">4-2460</div>	<div style="background-color: #ccc; padding: 5px; border: 1px solid black; margin-bottom: 5px;">LENS</div> <div style="background-color: #ccc; padding: 5px; border: 1px solid black; margin-bottom: 5px;">4-1050</div>							
<div style="background-color: #ccc; padding: 5px; border: 1px solid black; margin-bottom: 5px;">K-T TORCH KIT</div> <div style="background-color: #ccc; padding: 5px; border: 1px solid black; margin-bottom: 5px;">31-5000</div>												<div style="background-color: #ccc; padding: 5px; border: 1px solid black; margin-bottom: 5px;">WELDING HELMET</div> <div style="background-color: #ccc; padding: 5px; border: 1px solid black; margin-bottom: 5px;">4-1002</div>	<div style="background-color: #ccc; padding: 5px; border: 1px solid black; margin-bottom: 5px;">WELDING HELMET</div> <div style="background-color: #ccc; padding: 5px; border: 1px solid black; margin-bottom: 5px;">4-1050</div>				
<div style="background-color: #ccc; padding: 5px; border: 1px solid black; margin-bottom: 5px;">25' PIN EXTENSION CORD</div> <div style="background-color: #ccc; padding: 5px; border: 1px solid black; margin-bottom: 5px;">2-2570</div>												<div style="background-color: #ccc; padding: 5px; border: 1px solid black; margin-bottom: 5px;">TENS HOSE 1/4" x 25'</div> <div style="background-color: #ccc; padding: 5px; border: 1px solid black; margin-bottom: 5px;">3-7460</div>	<div style="background-color: #ccc; padding: 5px; border: 1px solid black; margin-bottom: 5px;">TENS HOSE 1/4" x 30'</div> <div style="background-color: #ccc; padding: 5px; border: 1px solid black; margin-bottom: 5px;">3-7490</div>				

Height
84"

8' x 84" Welding Accessory Display Section 2
Model No. 130-72302



8' Welding Display

8' x 72" Welding Display Model No. 130-72302

K-T	Model No.	Section	Row	Item	Description	Shelf Pack	UPC
	4-5150	1	1	1	Leather Rod Holder	5	083905451504
	1-1121	1	1	2	6011 Electrode 1 Lb 3/32"	25	083905111217
	1-1122	1	1	3	6011 Electrode 1 Lb 1/8"	25	083905111224
	1-1321	1	1	4	6013 Electrode 1 Lb 3/32"	25	083905113211
	1-1322	1	1	5	6013 Electrode 1 Lb 1/8"	25	083905113228
	1-1422	1	1	6	7014 Electrode 1 Lb 1/8"	25	083905114225
	1-1521	1	1	7	7018 Electrode 1 Lb 3/32"	25	083905115215
	1-1522	1	1	8	7018 Electrode 1 Lb 1/8"	25	083905115222
	1-1621	1	1	9	7018 Ac Electrode 1 Lb 3/32"	25	083905116212
	1-1341	1	1	10	6013 Electrode 1/2 Lb 1/16"	25	083905113419
	1-1342	1	1	11	6013 Electrode 1/2 Lb 5/64"	25	083905113426
	1-1708	1	1	12	Nickel 55 1/8" Value Pack 3Pc	25	083905117080
	1-1718	1	1	13	Cast Iron Electrode 1/8" Value Pack 10Pc	25	083905117189
	1-1728	1	1	14	Nickel 99 1/8" Value Pack 3Pc	25	083905117288
	1-1767	1	1	15	Stainless Steel 312 3/32" Value Pack 8Pc	25	083905117677
	1-1768	1	1	16	Stainless Steel 312 1/8" Value Pack 4 Pc	25	083905117684
	1-1808	1	1	17	Aluminum Electrode 1/8" Value Pack 6 Pc	25	083905118087
	1-1810	1	1	18	Alum Pro Brazing Rod 15 Pc	25	083905118100
	2-2474	1	1	19	600 Amp Battery Chgr Clamps	5	083905224740
	2-1515	1	2	1	Tweeco Gas Diffuser Each	5	083905215151
	2-1516	1	2	2	Tweeco 11 Tip .023 5 Pk	5	083905215168
	2-1517	1	2	3	Tweeco 11 Tip .030 5 Pk	5	083905215175
	2-1518	1	2	4	Tweeco 11 Tip .035 5 Pk	5	083905215182
	2-1520	1	2	5	Tweeco Nozzle 1/2" Each	5	083905215205
	2-1551	1	2	6	.030 Contact Tip Hobart 5Pk	5	083905215519
	2-1552	1	2	7	.035 Contact Tip Hobart 5Pk	5	083905215526
	2-1565	1	2	8	1/2" Hobart Style Nozzle	5	083905215656
	2-2340	1	2	9	Cable Lug Size 8 X No. 10 2 Pk	5	083905223408
	2-2341	1	2	10	Cable Lug Size 6 X 1/4 2 Pk	5	083905223415
	2-2342	1	2	11	Cable Lug Size 4 X 3/8 2 Pk	5	083905223422
	2-2344	1	2	12	Cable Lug Size 2 X 3/8 2 Pk	5	083905223446
	2-2346	1	2	13	Cable Lug Size 1 X 3/8 2 Pk	5	083905223460
	2-2348	1	2	14	Cable Lug Size 1/0 X 3/8 2Pk	5	083905223484
	2-2349	1	2	15	Cable Lug Size 2/0 X 1/2 2Pk	5	083905223491
	2-2350	1	2	16	Cable Lug Size 2/0 X 3/8 2Pk	5	083905223507
	2-2353	1	2	17	Cable Lug Size 4 X 5/16 2 Pk	5	083905223538
	2-2354	1	2	18	Cable Lug Size 2 X 5/16 2 Pk	5	083905223545
	2-2120	1	2	19	200 Amp Electrode Holder	5	083905221206
	2-2260	1	2	20	300 Amp Steel Gr Clamp	5	083905222609
	5-0068	1	3	1	Silver Marking Pencil 3 Pk	5	083905500684
	5-0015	1	3	2	Premium Scribe	5	083905500158
	5-0042	1	3	3	Solid Yellow Paint Stick 2 Pk	5	083905500424
	5-0043	1	3	4	Solid White Paint Sticks 2 Pk	5	083905500431
	5-0045	1	3	5	Yellow Liquid Paint Marker	5	083905500455
	5-0046	1	3	6	White Liquid Paint Marker	5	083905500462
	5-0047	1	3	7	Black Liquid Paint Marker	5	083905500479
	5-0048	1	3	8	Red Liquid Paint Marker	5	083905500486
	5-0061	1	3	9	Thin Line Marking Pencil	5	083905500615
	5-0065	1	3	10	Flat Soap Stone Holder	5	083905500653
	5-0080	1	3	11	Flat Soap Stone 5 Pk	5	083905500806
	5-0066	1	3	12	Round Soap Stone Holder	5	083905500660
	5-0085	1	3	13	Round Soap Stone 5 Pk	5	083905500851

8' Welding Display



8' x 84" Welding Display Model No. 130-72302

K-T	Model No.	Section	Row	Item	Description	Shelf Pack	UPC
	2-2410	1	3	14	Cable Connector Set 4-1/0 Black	5	083905224108
	2-2450	1	3	15	Universal Male Machine Plug 4-1/0 Black	5	083905224504
	2-2451	1	3	16	Universal Male Machine Plug 4-1/0 Red	5	083905224511
	5-1545	1	4	1	4 Pc Mini Magnetic Holder Set	5	083905515459
	5-1555	1	4	2	Large Magnetic Holder	5	083905515558
	2-2650	1	4	3	Crowfoot Recptacle 50 Amps	10	083905226508
	2-2655	1	4	4	Crowfoot Male Plug 50 Amps	10	083905226553
	2-2656	1	4	5	Pin Recptacle 50 Amps	10	083905226560
	2-2651	1	4	6	Pin Male Plug 50 Amps	10	083905226515
	2-2478	1	4	7	50 Amp Tune Up Clamps	5	083905224788
	5-1140	1	4	8	Mig Nozzle Cleaner	5	083905511406
	2-2459	1	4	9	Cable Splicer 4-1/0	5	083905224597
	5-0060	1	4	10	4 Way Pick Set	5	083905500608
	5-1150	1	4	11	Mig Plier	5	083905511505
	1-3121	1	5	1	Mild Steel Mig Wire 70S-6 .023 2 Lb	20	083905131215
	1-3123	1	5	2	Mild Steel Mig Wire 70S-6 .030 2 Lb	20	083905131239
	1-3125	1	5	3	Mild Steel Mig Wire 70S-6 .035 2 Lb	20	083905131253
	1-3153	1	5	4	Gasless Flux Core Mig Wire .030 2 Lb	20	083905131536
	1-3154	1	5	5	Gasless Flux Core Mig Wire .035 2 Lb	20	083905131543
	1-3313	1	5	6	Aluminum 5356 .035 Mig Wire 1 Lb	20	083905133134
	2-2750	1	5	7	Brazing Flux 1/2 Lb.	32	083905227505
	2-2700	1	5	8	Nozzel Gel 16 Oz	12	083905227000
	2-2710	1	5	9	Anti-Spatter Spray 16 Oz	12	083905227109
	1-3131	1	6	1	Mild Steel Mig Wire 70S-6 .023 10 Lb	1	083905131314
	1-3133	1	6	2	Mild Steel Mig Wire 70S-6 .030 10 Lb	1	083905131338
	1-3135	1	6	3	Mild Steel Mig Wire 70S-6 .035 10 Lb	1	083905131352
	1-3155	1	6	4	Gasless Flux Core Mig Wire .030 10 Lb	1	083905131550
	1-3156	1	6	5	Gasless Flux Core Mig Wire .035 10 Lb	1	083905131567
	1-1101	1	7	1	6011 Electrode 5 Lb 3/32"	10	083905111019
	1-1102	1	7	2	6011 Electrode 5 Lb 1/8"	10	083905111026
	1-1103	1	7	3	6011 Electrode 5 Lb 5/32"	10	083905111033
	1-1301	1	7	4	6013 Electrode 5 Lb 3/32"	10	083905113013
	1-1302	1	7	5	6013 Electrode 5 Lb 1/8"	10	083905113020
	1-1303	1	7	6	6013 Electrode 5 Lb 5/32"	10	083905113037
	1-1401	1	7	7	7014 Electrode 5 Lb 3/32"	10	083905114010
	1-1402	1	7	8	7014 Electrode 5 Lb 1/8"	10	083905114027
	1-1403	1	7	9	7014 Electrode 5 Lb 5/32"	10	083905114034
	1-1501	1	7	10	7018 Electrode 5 Lb 3/32"	10	083905115017
	1-1502	1	7	11	7018 Electrode 5 Lb 1/8"	10	083905115024
	1-1602	1	7	12	7018 Ac Electrode 5 Lb 1/8"	10	083905116021
	1-1112	1	8	1	6011 Electrode 10Lb 1/8"	6	083905111125
	1-1113	1	8	2	6011 Electrode 10Lb 5/32"	6	083905111132
	1-1312	1	8	3	6013 Electrode 10 Lb 1/8"	6	083905113129
	1-1313	1	8	4	6013 Electrode 10Lb 5/32"	6	083905113136
	1-1412	1	8	5	7014 Electrode 10Lb 1/8"	6	083905114126
	1-1512	1	8	5	7018 Electrode 10Lb 1/8"	5	083905115123
	1-3500	1	8	6	14" Rod Canister W/Dividers	24	083905135008
	2-2511	1	8	7	No. 1 Welding Cable 50' Box	50'	083905225112
	5-1200	2	1	1	Single Flint Striker	5	083905512007
	5-1300	2	1	2	Three Flint Striker	5	083905513004
	5-1250	2	1	3	Electronic Spark Lighter	5	083905512502
	5-1205	2	1	4	Single Flint Replacements 5 Pk	5	083905512052



8' Welding Display

8' x 84" Welding Display Model No. 130-72302

K-T Model No.	Section	Row	Item	Description	Shelf Pack	UPC
5-1205	2	1	4	Single Flint Replacements 5 Pk	5	083905512052
5-1305	2	1	5	Three Flint Replacement Flints 4 Pk	5	083905513059
5-0040	2	1	6	Tip Drill	5	083905500400
5-0070	2	1	7	Standard Tip Cleaner	5	083905500707
5-2205	2	1	8	Small Stainless Steel Cleaning Brush	5	083905522051
5-2206	2	1	9	Small Brass Cleaning Brush	5	083905522068
5-2207	2	1	10	Angled Head Stainless Steel Cleaning Brush	5	083905522075
5-2208	2	1	11	Angled Head Brass Cleaning Brush	5	083905522082
4-5005	2	1	12	Grey Welders Gloves	12	083905450057
4-5020	2	1	13	Premium Grade Welding Glove Blue	12	083905450200
4-2470	2	1	14	Clear Face Shield Ratchet Style	12	083905424706
1-5132	2	2	1	Rg-45 Mild Steel 36" 1 Lb 3/32"	25	083905151329
1-5219	2	2	2	Bare Bronze 1/8" 5 Pc 36"	25	083905152197
1-5319	2	2	3	Flux Coated Bronze 1/8" 5 Pc 36"	25	083905153194
31-1270	2	2	4	Victor Style Cutting Tip Size 0, 3-101	5	083905712704
32-1001	2	2	4	Harris Cutting Tip Size 1, 6290	5	083905610017
31-1271	2	2	5	Victor Style Cutting Tip Size 1, 3-101	5	083905712711
32-1002	2	2	5	Harris Cutting Tip Size 2, 6290	5	083905610024
31-1272	2	2	6	Victor Style Cutting Tip Size 2, 3-101	5	083905712728
32-1002P	2	2	6	Harris Propane Cutting Tip Size 2, 6290Nx	5	083905610123
31-1282	2	2	7	Victor Style Cutting Tip Size 2, 1-101	5	083905712827
34-1261	2	2	7	Smith Cutting Tip Size 1, Mc-12	5	083905714616
5-2210	2	2	8	Shoe Handle Carbon Steel Brush	12	083905522105
5-2211	2	2	9	Shoe Handle Carbon Steel Brush With Scraper	12	083905522112
5-2215	2	2	10	Shoe Handle Stainless Steel Brush	12	083905522150
5-2216	2	2	11	Shoe Handle Brass Brush	12	083905522167
4-1101	2	2	12	2" X 4" Clear Plastic	5	083905411010
4-1105	2	2	13	2" X 4" No. 5 Welding Plate	5	083905411058
4-1109	2	2	14	2" X 4" No. 9 Welding Plate	5	083905411096
4-1110	2	2	15	2" X 4" No. 10 Welding Plate	5	083905411102
4-1170	2	2	16	2" X 4-1/4" Magnifier Lens 2.00	5	083905411706
4-1192	2	2	17	Gen II (2) Inner Lens For 4-1050	5	083905411928
4-1191	2	2	18	Gen II (2) Outer Lens 4-1050 To 4-1076	5	083905411911
3-7526	2	3	1	Hose Coupler Kit	5	083905375268
3-7303	2	3	2	2" Pressure Gauge 30 Lb. Acetylene	5	083905373035
3-7380	2	3	3	2" Pressure Gauge 4000 Lb Oxygen	5	083905373806
5-2220	2	3	4	Bent Handle Carbon Steel Brush	12	083905522204
5-2221	2	3	5	Bent Handle Carbon Steel Brush With Scraper	12	083905522211
5-2222	2	3	6	V Groove Carbon Steel Scratch Brush	12	083905522228
5-2225	2	3	7	Bent Handle Stainless Steel Brush	12	083905522259
4-1150	2	3	8	4" X 5" Clear Glass	5	083905411508
4-1151	2	3	9	4" X 5" Clear Plastic	5	083905411515
4-1159	2	3	10	4" X 5" No. 9 Welding Plate	5	083905411591
4-1160	2	3	11	4" X 5" No. 10 Welding Plate	5	083905411607
5-0122	2	4	1	T Wrench 9/32" Pol	10	083905501223
21-6212	2	4	2	11" Locking C Clamp	5	083905662122
4-2456	2	4	3	Ultra Fashion Safety Glass Shaded 5.0	5	083905424560
4-2450	2	4	4	Wraparound Safety Glasses Indoor/Outdoor	5	083905424508
4-2460	2	4	5	Visitor Safety Glasses Clear	5	083905424607
5-1000	2	5	1	Spring Handle Chipping Hammer	10	083905510003
5-1100	2	5	2	Brush For Chipping Hammers	5	083905511000
5-1090	2	5	3	Chipping Hammer With Brush	1	083905510904

8' Welding Display



8' x 84" Welding Display Model No. 130-72302

K-T Model No.	Section	Row	Item	Description	Shelf Pack	UPC
4-3131	2	5	4	Stars And Stripes Bandana	12	083905431315
4-3125	2	5	5	Universal Size Welders Cap	12	083905431254
4-2305	2	5	6	Shade 5 Goggle 2" X 4-1/4" Flip Front	12	083905423051
31-5000	2	6	1	Victor Style Med. Duty Torch Kit	2	083905650006
4-1002	2	6	2	Welding Helmet 2" X 4-1/4" Flip Front	6	083905410020
4-1050	2	6	3	Shade 9-13 Auto Darkening Helmet Black	4	083905410501
2-2570	2	7	1	25' 8/3 Pin Extension Cord	1	083905225709
3-7460	2	7	2	1/4" X 25' Twinline Hose	10	083905374605
3-7490	2	7	3	1/4" X 50' Twinline Hose	5	083905374902



4' x 84" Welding Display Model No. 130-72301

This welding display is designed for retail environments with a product mix that will fulfill most home and hardware user's requests. This set is capable of handling the smaller hardware store. KT's signage helps end users make the right buying decision as well as directing them to the right area and helps them make the right decision when purchasing K-T product.



4' Welding Display



Width:
48"

TOOLS & WELDING SUPPLIES FOR THE PROFESSIONAL

ARC & MIG WELDING CENTER

ARC									200 AMP HOLDER	300 AMP GROUND	OXY	OXY	OXY	OXY	OXY	OXY					
1-1121	1-1122	1-1321	1-1322	1-1422	1-1341	1-1708	1-1767	1-1808	2-2260	2-2120	5-1300	5-1200	5-1205	5-1305	5-0040	5-0070	3-7526				
MIG									LARGE MAGNET	OXY	ROD	ROD	ROD	OXY	OXY	OXY	OXY				
2-1515	2-1516	2-1517	2-1518	2-1520	2-2341	2-2342	2-2344	2-2346	2-2353	5-1555	5-1250	1-5132	1-5219	1-5319	3-7303	3-7380	32-1002	34-1261			
MARK						CABLE			CROWFOOT		ROD		LENS		LENS		LENS		LENS		
5-0045	5-0046	5-0065	5-0080	5-0066	5-0085	2-2410	2-2450	2-2451	2-2650	2-2655	1-5132	1-5219	1-5319	4-1101	4-1105	4-1109	4-1110	4-1150	4-1151		
MIG PLIER		PICK SET		BRUSH		BRUSH		BRUSH		BRUSH		BRUSH		LENS		LENS		LENS		LENS	
5-1150	5-0060	5-2205	5-2206	5-2210	5-2215	5-2220	5-2225	4-5005	4-1159	4-1160	4-1170	4-1192	4-1191	4-1159	4-1160	4-1170	4-1192	4-1191	AUTO-DARKENING HELMET		
MIG WIRE		MIG WIRE		MIG WIRE		MIG WIRE		MIG WIRE		WELDING HELMET		WELDING HELMET		LENS		LENS		LENS		LENS	
1-3121	1-3123	1-3125	1-3153	1-3154	4-1002	4-1050	4-1159	4-1160	4-1170	4-1192	4-1191	AUTO-DARKENING HELMET		LENS		LENS		LENS		LENS	
NOZZLE GEL		ROD CANISTER		MIG WIRE		MIG WIRE		MIG WIRE		MIG WIRE		MIG WIRE		MIG WIRE		MIG WIRE		MIG WIRE		MIG WIRE	
2-2700	1-3500	1-3133	1-3156	1-3121	1-3123	1-3125	1-3153	1-3154	1-1102	1-1103	1-1302	1-1303	1-1402	1-1403	1-1112	1-1312	1-1412	1-1512	TANK HOSE 1/4" x 25'		3-7460

Height
84"

4' x 84" Welding Accessory Display Section 1
Model No. 130-72301



4' Welding Display

4' x 84" Welding Display Model No. 130-72301

K-T						
Model No.	Section	Row	Item	Description	Shelf Pack	UPC
1-1121	1	1	1	6011 Electrode 1 Lb 3/32"	25	083905111217
1-1122	1	1	2	6011 Electrode 1 Lb 1/8"	25	083905111224
1-1321	1	1	3	6013 Electrode 1 Lb 3/32"	25	083905113211
1-1322	1	1	4	6013 Electrode 1 Lb 1/8"	25	083905113228
1-1422	1	1	5	7014 Electrode 1 Lb 1/8"	25	083905114225
1-1341	1	1	6	6013 Electrode 1/2 Lb 1/16"	25	083905113419
1-1708	1	1	7	Nickel 55 1/8" Value Pack 3Pc	25	083905117080
1-1767	1	1	8	Stainless Steel 312 3/32" Value Pack 8Pc	25	083905117677
1-1808	1	1	9	Aluminum Electrode 1/8" Value Pack 6 Pc	25	083905118087
2-2260	1	1	10	300 Amp Steel Gr Clamp	5	083905222609
2-2120	1	1	11	200 Amp Electrode Holder	5	083905221206
5-1300	1	1	12	Three Flint Striker	5	083905513004
5-1200	1	1	13	Single Flint Striker	5	083905512007
5-1205	1	1	14	Single Flint Replacements 5 Pk	5	083905512052
5-1305	1	1	15	Three Flint Replacement Flints 4 Pk	5	083905513059
5-0040	1	1	16	Tip Drill	5	083905500400
5-0070	1	1	17	Standard Tip Cleaner	5	083905500707
3-7526	1	1	18	Hose Coupler Kit	5	083905375268
31-1270	1	2	1	Victor Style Cutting Tip Size 0, 3-101	5	083905712704
31-1271	1	2	2	Victor Style Cutting Tip Size 1, 3-101	5	083905712711
31-1272	1	2	3	Victor Style Cutting Tip Size 2, 3-101	5	083905712728
31-1282	1	2	4	Victor Style Cutting Tip Size 2, 1-101	5	083905712827
32-1001	1	2	5	Harris Cutting Tip Size 1, 6290	5	083905610017
2-1515	1	3	1	Tweeco Gas Diffuser Each	5	083905215151
2-1516	1	3	2	Tweeco 11 Tip .023 5 Pk	5	083905215168
2-1517	1	3	3	Tweeco 11 Tip .030 5 Pk	5	083905215175
2-1518	1	3	4	Tweeco 11 Tip .035 5 Pk	5	083905215182
2-1520	1	3	5	Tweeco Nozzle 1/2" Each	5	083905215205
2-2341	1	3	6	Cable Lug Size 6 X 1/4 2 Pk	5	083905223415
2-2342	1	3	7	Cable Lug Size 4 X 3/8 2 Pk	5	083905223422
2-2344	1	3	8	Cable Lug Size 2 X 3/8 2 Pk	5	083905223446
2-2346	1	3	9	Cable Lug Size 1 X 3/8 2 Pk	5	083905223460
2-2353	1	3	10	Cable Lug Size 4 X 5/16 2 Pk	5	083905223538
5-1555	1	3	11	Large Magnetic Holder	5	083905515558
5-1250	1	3	12	Electronic Spark Lighter	5	083905512502
1-5132	1	3	13	Rg-45 Mild Steel 36" 1 Lb 3/32"	25	083905151329
1-5219	1	3	14	Bare Bronze 1/8" 5 Pc 36"	25	083905152197
1-5319	1	3	15	Flux Coated Bronze 1/8" 5 Pc 36"	25	083905153194
3-7303	1	3	16	2"Pressure Gauge 30 Lb. Acetylene	5	083905373035
3-7380	1	3	17	2"Pressure Gauge 4000 Lb Oxygen	5	083905373806
32-1002	1	3	18	Harris Cutting Tip Size 2, 6290	5	083905610024
34-1261	1	3	19	Smith Cutting Tip Size 1, Mc-12	5	083905714616
4-1101	1	4	1	2" X 4" Clear Plastic	5	083905411010
4-1105	1	4	2	2" X 4" No. 5 Welding Plate	5	083905411058
4-1109	1	4	3	2" X 4" No. 9 Welding Plate	5	083905411096
4-1110	1	4	4	2" X 4" No. 10 Welding Plate	5	083905411102
5-0045	1	5	1	Yellow Liquid Paint Marker	5	083905500455
5-0046	1	5	2	White Liquid Paint Marker	5	083905500462
5-0065	1	5	3	Flat Soap Stone Holder	5	083905500653
5-0080	1	5	4	Flat Soap Stone 5 Pk	5	083905500806
5-0066	1	5	5	Round Soap Stone Holder	5	083905500660
5-0085	1	5	6	Round Soap Stone 5 Pk	5	083905500851

4' Welding Display



4' x 84" Welding Display Model No. 130-72301

K-T	Model No.	Section	Row	Item	Description	Shelf Pack	UPC
	2-2410	1	5	7	Cable Connector Set 4-1/0 Black	5	083905224108
	2-2450	1	5	8	Universal Male Machine Plug 4-1/0 Black	5	083905224504
	2-2451	1	5	9	Universal Male Machine Plug 4-1/0 Red	5	083905224511
	2-2650	1	5	10	Crowfoot Rectacle 50 Amps	10	083905226508
	2-2655	1	5	11	Crowfoot Male Plug 50 Amps	10	083905226553
	4-1150	1	5	12	4" X 5" Clear Glass	5	083905411508
	4-1151	1	5	13	4" X 5" Clear Plastic	5	083905411515
	4-1159	1	6	1	4" X 5" No. 9 Welding Plate	5	083905411591
	4-1160	1	6	2	4" X 5" No. 10 Welding Plate	5	083905411607
	5-1150	1	7	1	Mig Plier	5	083905511505
	5-0060	1	7	2	4 Way Pick Set	5	083905500608
	5-1000	1	7	3	Spring Handle Chipping Hammer	10	083905510003
	5-2205	1	7	4	Small Stainless Steel Cleaning Brush	5	083905522051
	5-2206	1	7	5	Small Brass Cleaning Brush	5	083905522068
	5-2210	1	7	6	Shoe Handle Carbon Steel Brush	12	083905522105
	5-2215	1	7	7	Shoe Handle Stainless Steel Brush	12	083905522150
	5-2220	1	7	8	Bent Handle Carbon Steel Brush	12	083905522204
	5-2225	1	7	9	Bent Handle Stainless Steel Brush	12	083905522259
	4-5005	1	7	10	Grey Welders Gloves	12	083905450057
	4-1170	1	7	11	2" X 4-1/4" Magnifier Lens 2.00	5	083905411706
	4-1192	1	7	12	Gen li (2) Inner Lens For 4-1050	5	083905411928
	4-1191	1	7	13	Gen li (2) Outer Lens 4-1050 To 4-1076	5	083905411911
	1-3121	1	8	1	Mild Steel Mig Wire 70S-6 .023 2 Lb	20	083905131215
	1-3123	1	8	2	Mild Steel Mig Wire 70S-6 .030 2 Lb	20	083905131239
	1-3125	1	8	3	Mild Steel Mig Wire 70S-6 .035 2 Lb	20	083905131253
	1-3153	1	8	4	Gasless Flux Core Mig Wire .030 2 Lb	20	083905131536
	1-3154	1	8	5	Gasless Flux Core Mig Wire .035 2 Lb	20	083905131543
	2-2700	1	9	1	Nozzel Gel 16 Oz	12	083905227000
	1-3500	1	9	2	14" Rod Canister W/Dividers	24	083905135008
	1-3133	1	9	3	Mild Steel Mig Wire 70S-6 .030 10 Lb	1	083905131338
	1-3156	1	9	4	Gasless Flux Core Mig Wire .035 10 Lb	1	083905131567
	4-1002	1	9	5	Welding Helmet 2" X 4-1/4" Flip Front	6	083905410020
	4-1050	1	9	6	Shade 9-13 Auto Darkening Helmet Black	4	083905410501
	1-1102	1	10	1	6011 Electrode 5 Lb 1/8"	10	083905111026
	1-1103	1	10	2	6011 Electrode 5 Lb 5/32"	10	083905111033
	1-1302	1	10	3	6013 Electrode 5 Lb 1/8"	10	083905113020
	1-1303	1	10	4	6013 Electrode 5 Lb 5/32"	10	083905113037
	1-1402	1	10	5	7014 Electrode 5 Lb 1/8"	10	083905114027
	1-1403	1	10	6	7014 Electrode 5 Lb 5/32"	10	083905114034
	1-1112	1	10	7	6011 Electrode 10Lb 1/8"	6	083905111125
	1-1312	1	10	8	6013 Electrode 10 Lb 1/8"	6	083905113129
	1-1412	1	10	9	7014 Electrode 10Lb 1/8"	6	083905114126
	1-1512	1	10	10	7018 Electrode 10Lb 1/8"	5	083905115123
	3-7460	1	10	11	1/4" X 25' Twinline Hose	10	083905374605

Welding Displays



**TOOLS AND WELDING
SUPPLIES
FOR THE PROFESSIONAL**

**Your One Source
For Exceptional
Quality and Service**

Distributed By:

**K-T Industries
P.O. Box 123
3112 Northwest Boulevard
Sheldon, Iowa 51201
Phone (712) 324-5361 Fax (712) 324-2930**