



12' Master Air Display



Air Accessory Plan-O-Grams

This catalog is designed to help our retail partners select a Plan-O-Gram that fits their market. K-T offers a wide variety of Plan-O-Grams that is sure to fit just about any market environment. From a basic display for hardware stores, to a 12' display that has the product depth and quantity for high quantity sales.

**Providing you with programs and tools
to increase volume and sales goals**



**12' x 60" Master Air Accessory Display
Model No. 130-60112**

This full line air display is designed for larger retail environments that demand product selection and stock depth. It has a product mix that will fulfill almost all users' requests. This set is very capable of handling the largest sales volume. A handy coupler test bar for customer use is included free of charge. K-T's signage helps end users make the right buying decision as well as directing them to the right area.

K-T Air Accessory Plan-O-Grams

Width:
48"

PROFESSIONAL QUALITY

AIR ACCESSORY CENTER

ZINC COATED BRASS COUPLERS FEATURE

- *One piece design ensures leak-free double.
- *Solid brass bodies and sleeves resistant and corrosion.
- *Stainless steel springs, hardened steel locking balls and valves, and Buna-N (Nitrile) seals.
- *Positive action locking mechanism prevents accidental uncoupling.
- *Extra large diameter ensures easy grip of the.
- *Automatic air check valve shuts air off instantly when uncoupled.
- *Free swivelling action prevents cutting or kinking of air hose.

AIR																							
6-5160	6-5109	6-5100	6-5100	6-5101	6-5101	6-5102	6-5102	6-5105	6-5105	6-5106	6-5106	6-5104	6-5108	6-5107	6-5103	6-5103	6-5124	6-5125	6-5120	6-5121	6-5122	6-5123	
AIR																							
6-5129	6-5128	6-5126	6-5127	6-5110		6-5110		6-5111		6-5111		6-5112		6-5115		6-5150	6-5151	6-5141	6-5141	6-5142	6-5143	6-5144	
AIR																							
6-5160	6-5109	6-5100	6-5100	6-5101	6-5101	6-5102	6-5102	6-5105	6-5105	6-5106	6-5106	6-5104	6-5108	6-5107	6-5103	6-5103	6-5124	6-5125	6-5120	6-5121	6-5122	6-5123	
K-T AIR			K-T AIR			K-T AIR			AIR		AIR		AIR		AIR		AIR		AIR		AIR		
6-5370			6-5118			6-5118			6-5352		6-5350		6-5351		6-5355		6-5355		6-5352		6-5353		
K-T AIR																							
6-5360																							
K-T AIR																							
6-5361																							
K-T AIR								K-T AIR								K-T AIR							
6-5344								6-5345								6-5317							

12' x 60" Master Air Accessory Display Section 1

Model No. 130-60112

Height
60"



12' Master Air Display



12' x 60" Master Air Accessory Display Model No. 130-60112

K-T Model No.	Section	Row	Item	Description	Shelf Pack	UPC
6-5160	1	1	1	Coupler Test Bar	1	083905651607
6-5109	1	1	2	Industrial 1/4" F NPT Push to Connect Coupler	5	083905651096
6-5100	1	1	3-4	Industrial 1/4" Coupler Kit	5	083905651003
6-5101	1	1	5-6	Industrial 1/4" M NPT 1/4" Nipple	5	083905651010
6-5102	1	1	7-8	Industrial 1/4" FM NPT 1/4" Nipple	5	083905651027
6-5105	1	1	9-10	Industrial 1/4" M NPT 1/4" Coupler	5	083905651058
6-5106	1	1	11-12	Industrial 1/4" F NPT 1/4" Coupler	5	083905651065
6-5104	1	1	13	Industrial 1/4" Barbed 1/4" Nipple	5	083905651041
6-5108	1	1	14	Industrial 1/4" Barbed 1/4" Coupler	5	083905651089
6-5107	1	1	15	Industrial 3/8" F NPT 1/4" Coupler	5	083905651072
6-5103	1	1	16-17	Industrial 3/8" M NPT 1/4" Nipple	5	083905651034
6-5124	1	1	18	Industrial 1/4" M NPT 3/8" Nipple	5	083905651249
6-5125	1	1	19	Industrial 1/4" F NPT 3/8" Nipple	5	083905651256
6-5120	1	1	20	Industrial 3/8" M NPT 3/8" Nipple	5	083905651201
6-5121	1	1	21	Industrial 3/8" F NPT 3/8" Nipple	5	083905651218
6-5122	1	1	22	Industrial 3/8" M NPT 3/8" Coupler	5	083905651225
6-5123	1	1	23	Industrial 3/8" F NPT 3/8" Coupler	5	083905651232
6-5128	1	2	1	1/2" M NPT 1/2" Coupler	5	083905651287
6-5129	1	2	2	1/2" F NPT 1/2" Coupler	5	083905651294
6-5126	1	2	3	1/2" M NPT 1/2" Nipple	5	083905651263
6-5127	1	2	4	1/2" F NPT 1/2" Nipple	5	083905651270
6-5110	1	2	5-6	Industrial 1/4" F NPT 1/4" Coupler 4pk	5	083905651102
6-5111	1	2	7-8	Industrial 1/4" M NPT 1/4" Nipple 10pk	5	083905651119
6-5112	1	2	9	Industrial 1/4" FM NPT 1/4" Nipple 10 pk	5	083905651126
6-5115	1	2	10	5 Pc Industrial 1/4" Coupler Kit	5	083905651157
6-5150	1	2	11	Univeral 1/4" M NPT 1/4" Coupler	5	083905651508
6-5151	1	2	12	Univeral 1/4" F NPT 1/4" Coupler	5	083905651515
6-5141	1	2	13-14	Lincoln 1/4" M NPT 1/4" Nipple	5	083905651416
6-5142	1	2	15	Lincoln 1/4" F NPT 1/4" Nipple	5	083905651423
6-5143	1	2	16	Lincoln 1/4" M NPT 1/4" Coupler	5	083905651430
6-5144	1	2	17	Lincoln 1/4" F NPT 1/4" Coupler	5	083905651447
6-5209	1	3	1	Hose Splicer 1/4"	5	083905652093
6-5210	1	3	2-3	Hose Splicer 3/8"	5	083905652109
6-5211	1	3	4-5	Hose End 1/4" M NPT x 3/8" Barb	5	083905650907
6-5212	1	3	6	Hose End 1/4" F NPT x 3/8" Barb	5	083905652123
6-5213	1	3	7	Hose End 1/4" F NPT x 1/4" Barb	5	083905652130
6-5215	1	3	8-9	Hose End 1/4" M NPT x 1/4" Barb	5	083905650914
6-5216	1	3	10	Reducer Adaptor 3/8 F NPT - 1/4" M NPT	5	083905652161
6-5217	1	3	11-12	Male Coupler 1/4" NPT	5	083905652178
6-5221	1	3	13-14	Female Coupling 1/4-1/4	5	083905652215
6-5260	1	3	15	Male Swivel End 1/4" NPT x 1/4" Barb	5	083905652604
6-5261	1	3	16	FM Swivel End 1/4" NPT x 1/4" Barb	5	083905652611
6-5262	1	3	17	Male Swivel End 1/4" NPT x 3/8" Barb	5	083905652628
6-5263	1	3	18	Female Swivel End 3/8" NPT x 3/8" Barb	5	083905652635
6-5264	1	3	19	Full Port Brass Swivel End 1/4" M X 3/8"	5	083905652642
6-5265	1	3	20	Swivel Fitting 1/4" FM NPT x 1/4" M NPT	5	083905652659
6-5222	1	3	21-22	Reducer 3/8M x 1/4M	5	083905650921
6-5228	1	3	23	Hose End 3/8" F NPT x 3/8" Barb	5	083905652284
6-5370	1	4	1	Pistol Grip Blow Gun	5	083905653700
6-5118	1	4	2-3	18 Pc Industrial 1/4" Coupler Kit	5	083905651188
6-5352	1	4	4	Compact Economy Blow Gun	5	083905653526
6-5350	1	4	5	Syphon Spray Blow Gun	5	083905653502
6-5351	1	4	6	Safety Blow Gun vented Nozzle	5	083905653519
6-5355	1	4	7-8	Blow Gun w/ Rubber Tip	5	083905653557
6-5357	1	4	9	Deluxe Blow Gun Kit	5	083905653571
6-5353	1	4	10	Adj Pocket Blow Gun Tru-Flate Design	5	083905653533



12' Master Air Display



12' x 60" Master Air Accessory Display Model No. 130-60112

K-T	Model No.	Section	Row	Item	Description	Shelf Pack	UPC
	6-5354	1	4	11	Adj Pocket Blow Gun Industrial Design	5	083905653540
	6-5360	1	5	1	2' Safety Blow Gun	5	083905653601
	6-5361	1	5	2	4' Safety Blow Gun	5	083905653618
	6-5344	1	6	1	Manual Air Hose Reel w/o Hose	1	083905653441
	6-5345	1	6	2	Manual Air Hose Reel with 50' Hose	1	083905653458
	6-5317	1	6	3	3/8" Blended Flex Hose 50'	5	083905653175
	6-5020	2	1	1	Tru-Flate 1/4" F NPT Push to Connect Coupler	5	083905650204
	6-5000	2	1	2	Tru-Flate 1/4" Coupler Kit	5	083905650600
	6-5001	2	1	3-4	Tru-Flate 1/4" M NPT 1/4" Nipple	5	083905650617
	6-5002	2	1	5	Tru-Flate 1/4" F NPT 1/4" Nipple	5	083905650624
	6-5004	2	1	6	Tru-Flate 1/4" M NPT 1/4" Coupler	5	083905650648
	6-5005	2	1	7-8	Tru-Flate 1/4" F NPT 1/4" Coupler	5	083905650655
	6-5003	2	1	9	Tru-Flate 1/4" F Barbed 1/4" Nipple	5	083905650631
	6-5006	2	1	10	Tru-Flate 1/4" F Barbed 1/4" Coupler	5	083905650662
	6-5007	2	1	11	Tru-Flate 3/8" F NPT 1/4" Nipple	5	083905650679
	6-5008	2	1	12	Tru-Flate 3/8" F NPT 1/4" Coupler	5	083905650686
	6-5009	2	1	13	Tru-Flate 3/8" M NPT 1/4" Coupler	5	083905650693
	6-5015	2	1	14	Tru-Flate 1/4" FM NPT 3/8" Coupler	5	083905650754
	6-5010	2	1	15	Tru-Flate 1/4" M NPT 3/8" Nipple	5	083905650709
	6-5016	2	1	16	Tru-Flate 1/4" FM NPT 3/8" Nipple	5	083905650761
	6-5411	2	1	17-18	Profession Tire Gauge 10-50 Lbs	5	083905654110
	6-5410	2	1	19	Dual Foot Service Gauge 20-120	5	083905654103
	6-5412	2	1	20	Low Pressure Tire Gauge 0-20Lbs	5	083905654127
	6-5413	2	1	21	Truck Tire Gauge 20-120 lbs	5	083905654134
	6-5415	2	1	22	Tractor Tire Gauge 5-45 Lbs	5	083905654158
	6-5416	2	1	23	Tire Gauge 10-50 PSI	5	083905654165
	6-5130	2	2	1	ARO 1/4" Coupler Kit	5	083905651300
	6-5131	2	2	2-3	ARO 1/4" M NPT 1/4" Nipple	5	083905651317
	6-5132	2	2	4	ARO 1/4" F NPT 1/4" Nipple	5	083905651324
	6-5133	2	2	5	ARO 1/4" M NPT 1/4" Coupler	5	083905651331
	6-5134	2	2	6	ARO 1/4" F NPT 1/4" Coupler	5	083905651348
	6-5011	2	2	7	Tru-Flate 3/8" M NPT 3/8" Nipple	5	083905650716
	6-5012	2	2	8	Tru-Flate 3/8" FM NPT 3/8" Nipple	5	083905650723
	6-5013	2	2	9	Tru-Flate 3/8" FM NPT 3/8" Coupler	5	083905650730
	6-5014	2	2	10	Tru-Flate 3/8" M NPT 3/8" Coupler	5	083905650747
	6-5030	2	2	11	Tru-Flate 1/4" F NPT 1/4" Coupler 4pk	5	083905650303
	6-5031	2	2	12	Tru-Flate 1/4" M NPT 1/4" Nipple 10 pk	5	083905650310
	6-5032	2	2	13	Tru-Flate 1/4" F NPT 1/4" Nipple 10 pk	5	083905650327
	6-5223	2	3	1	Bushing 1/8" FM x 1/4" M	5	083905652239
	6-5224	2	3	2-3	Bushing 1/4" FM x 3/8" M	5	083905652246
	6-5225	2	3	4	Bushing 3/8" FM x 1/2" M	5	083905650938
	6-5465	2	3	5	1/8" Drain Cock	5	083905654653
	6-5475	2	3	6	1/4" NPT Drain Cock	5	083905654752
	6-5470	2	3	7	Tank Valve 1/8" NPT Max 200 PSI	5	083905654707
	6-5467	2	3	8	125 PSI Tank Valve	5	083905654677
	6-5468	2	3	9	150 PSI Tank Valve	5	083905654684
	6-5460	2	3	10	Air Line Kit	5	083905654608
	6-5450	2	3	11-12	Air Chuck	5	083905654509
	6-5451	2	3	13-14	Air Chuck w/ Clip	5	083905654516
	6-5453	2	3	15	Air Chuck w/ 1/4" Barb	5	083905654530
	6-5358	2	3	16	Replacement Inflators 5 pack	5	083905653588
	6-5454	2	3	17-18	Dual Foot Air Chuck	5	083905654547
	6-5455	2	3	19	Dual Foot Straight Air Chuck	5	083905654554
	6-5522	2	3	20	Clamp in Truck Valve .625 x 3-1/8	5	083905655223
	6-5523	2	3	21	Clamp in Truck Valve .625 x 3-3/4	5	083905655230
	6-5524	2	3	22	Clamp in Truck Valve .625 x 4-3/8	5	083905655247



12' Master Air Display



12' x 60" Master Air Accessory Display Model No. 130-60112

K-T	Model No.	Section	Row	Item	Description	Shelf Pack	UPC
	6-5495	2	3	23	Valve Core Tool .453/.625	5	083905654950
	6-5267	2	4	1	1/4" Male NPT x 1/2" FM NPT 90 Swivel	5	083905652673
	6-5268	2	4	2	1/4" M NPT x 1/4" FM NPT Univ. Swivel	5	083905652680
	6-5270	2	4	3	1/4" NPT Brass T	5	083905652703
	6-5271	2	4	4	3/8" NPT Brass T	5	083905652710
	6-5272	2	4	5	1/4" NPT Brass Cross	5	083905652727
	6-5273	2	4	6	3/8" NPT Brass Cross	5	083905652734
	6-5275	2	4	7	1/4" NPT 3 in One Manifold Tripod	5	083905652758
	6-5276	2	4	8	3/8" NPT x 1/4" NPT Manifold	5	083905652765
	6-5277	2	4	9	1/4" NPT 3 in One Manifold Flat	5	083905652772
	6-5564	2	4	10	Metal Valve Extension 5"	5	083905655643
	6-5563	2	4	11	Metal Valve Extension 4"	5	083905655636
	6-5282	2	4	12	Full Port Brass Ball Valve 3/8 X 3/8	5	083905652826
	6-5420	2	4	13	Dial Tire Gauge 10-60 Lbs.	5	083905654202
	6-5315	2	5	1	1/4" Reinforced Poly Hose 50'	5	083905653151
	6-5310	2	5	2	1/4" PVC 25'	5	083905653106
	6-5311	2	5	3	1/4" PVC 50'	5	083905653113
	6-5312	2	5	4	3/8" PVC 25'	5	083905653120
	6-5313	2	5	5	3/8" PVC 50'	5	083905653137
	6-5319	2	6	1	1/2" Blended Flex Hose 50'	5	083905653199
	6-5300	2	6	2	1/4" Rubber Hose 25'	5	083905653007
	6-5301	2	6	3-4	1/4" Rubber Hose 50'	5	083905653014
	6-5540	3	1	1	Valve Cap Nickel Plated w/ Washer	5	083905655407
	6-5541	3	1	2	Valve Cap Hex Head	5	083905655414
	6-5543	3	1	3	Valve Cap Screwdriver Type	5	083905655438
	6-5544	3	1	4	Valve Cap Dome Plastic	5	083905655445
	6-5546	3	1	5	Valve Cap Large Bore Screwdriver Type	5	083905655469
	6-5498	3	1	6	Air/Water Adapter Kit	5	083905654981
	6-5506	3	1	7	Tire Valves Snap in .453 X 1-1/4 2 PK	5	083905655063
	6-5507	3	1	8	Tire Valves Snap in .625 X 1-1/4 2 PK	5	083905655070
	6-5508	3	1	9	Tire Valves Snap in .453 X 2" 2 PK	5	083905655087
	6-5509	3	1	10	Tire Valves Snap in .453 X 2-1/2 2 PK	5	083905655094
	6-5511	3	1	11	Tire Valves Snap in .625 X 2" 2 PK	5	083905655117
	6-5513	3	1	12	Clamp in Tubeless Valve 1-1/8	5	083905655131
	6-5516	3	1	13	Chrome Snap in Valve .453 short	5	083905655162
	6-5517	3	1	14	Chrome Snap in Valve .453 Long	5	083905655179
	6-5520	3	1	15	Clamp In Truck Valve .625 x 1-1/2	5	083905655209
	6-5521	3	1	16	Clamp in Truck Valve .625 x 2	5	083905655216
	6-5527	3	1	17	Tubeless Fast Flow air/liquid tractor valve	5	083905655278
	6-5528	3	1	18	New Style tractor core housing lg bore	5	083905655285
	6-5530	3	1	19-20	Valve Core .2108-36 5 Pk	5	083905655308
	6-5531	3	1	21	Valve Core Large Bore 10 Pk	5	083905655315
	6-5550	3	1	22	Plastic Valve Extensions 3/4"	5	083905655506
	6-5551	3	1	23	Plastic Valve Extensions 1-1/4"	5	083905655513
	6-5491	3	2	1	In-Line Air Tool Filter	5	083905654912
	5-5493	3	2	2	Tread Depth Gauge 1/32" to 1"	5	083905554939
	6-5497	3	2	3	2 Way Core Remover	5	083905654974
	6-5499	3	2	4	Four way Tire Valve Repair	5	083905654998
	6-5496	3	2	5	Valve Finishing Tool	5	083905654967
	6-5490	3	2	6	In-Line Air Tool Oiler	5	083905654905
	6-5492	3	2	7	In-Line Air Flow Regulator with Gauge	5	083905654929
	6-5471	3	2	8	2" X 1/4" NPT 160 PSI Gauge	5	083905654714
	6-5472	3	2	9	1-1/2"x1/8"NPT Rear Mount Gauge 160	5	083905654721
	6-5473	3	2	10	1-1/2"x1/4"NPT Rear Mount Gauge 160	5	083905654738
	6-5474	3	2	11	2 1/2" Oil Filled Gauge 0-250 lbs	5	083905654745
	6-5469	3	2	12	Manifold Replacement	5	083905654691



12' Master Air Display



12' x 60" Master Air Accessory Display Model No. 130-60112

K-T Model No.	Section	Row	Item	Description	Shelf Pack	UPC
6-5466	3	2	13	1/2" Compressor Check Valve	5	083905654660
6-5552	3	2	14	Plastic Valve Extensions 1-1/2"	5	083905655520
6-5480	3	3	1	Mini Filter	1	083905654806
6-5481	3	3	2	Mini Regulator	1	083905654813
6-5482	3	3	3	Mini Lubricator	1	083905654820
6-5485	3	3	4	Compressor Filter	1	083905654851
6-5486	3	3	5	Compressor Regulator	1	083905654868
6-5487	3	3	6	Compressor Lubricator	1	083905654875
6-5610	3	3	7	Pressure Switch 125PSI Push Pull	5	083905656107
6-5615	3	3	8	Pressure Switch 175PSI Bend/Lever	5	083905656152
6-5414	3	4	1	Dual Foot Service Gauge 20-130	5	083905654141
6-5494	3	4	2	Valve Insertion Tool	5	083905654943
6-5419	3	4	3	Deluxe Gauge 10-120	5	083905654196
6-5484	3	4	4	Filter Regulator Combo	1	083905654844
6-5483	3	4	5	Mini Filter Regulator Combo	1	083905654837
6-5330	3	4	6	24" Hose Leader with Swivel 1/4"	5	083905653304
6-5331	3	4	7	60" Hose Leader with Swivel 1/4"	5	083905653311
6-5320	3	5	1-3	1/4" X 12' Recoil Hose	5	083905653205
6-5321	3	5	4-6	1/4" X 25' Recoil Hose	5	083905653212
6-5325	3	5	7-8	3/8" X 25' Recoil Hose	5	083905653250
6-5305	3	6	1-2	3/8" Rubber Hose 25'	5	083905653052
6-5306	3	6	3-4	3/8" Rubber Hose 50'	5	083905653069

Point of Purchase included with the 12' Master Air Display

AIR ACCESSORY CENTER

PROFESSIONAL QUALITY

EASY TO IDENTIFY
COLOR-CODED PACKAGING

Help your customer identify the product they need.

AIR ACCESSORY CENTER

PROFESSIONAL QUALITY

ZINC COATED BRASS
COUPLERS FEATURE

- Zinc plated brass coupler, nipple, elbow, and valve, and Specialty Nipple parts.
- Solid brass bodied and stainless steel locking balls and valves, and Specialty Nipple parts.
- Positive action locking mechanism prevents accidental uncoupling.
- Extra large diameter fittings much greater air flow.
- Automatic air check valve shuts air off instantly when uncoupled.
- Free swivelling action prevents curling or kinking of air hose.

Sell the quality products your customers demand.

TIRE & COMPRESSOR CENTER

PROFESSIONAL QUALITY

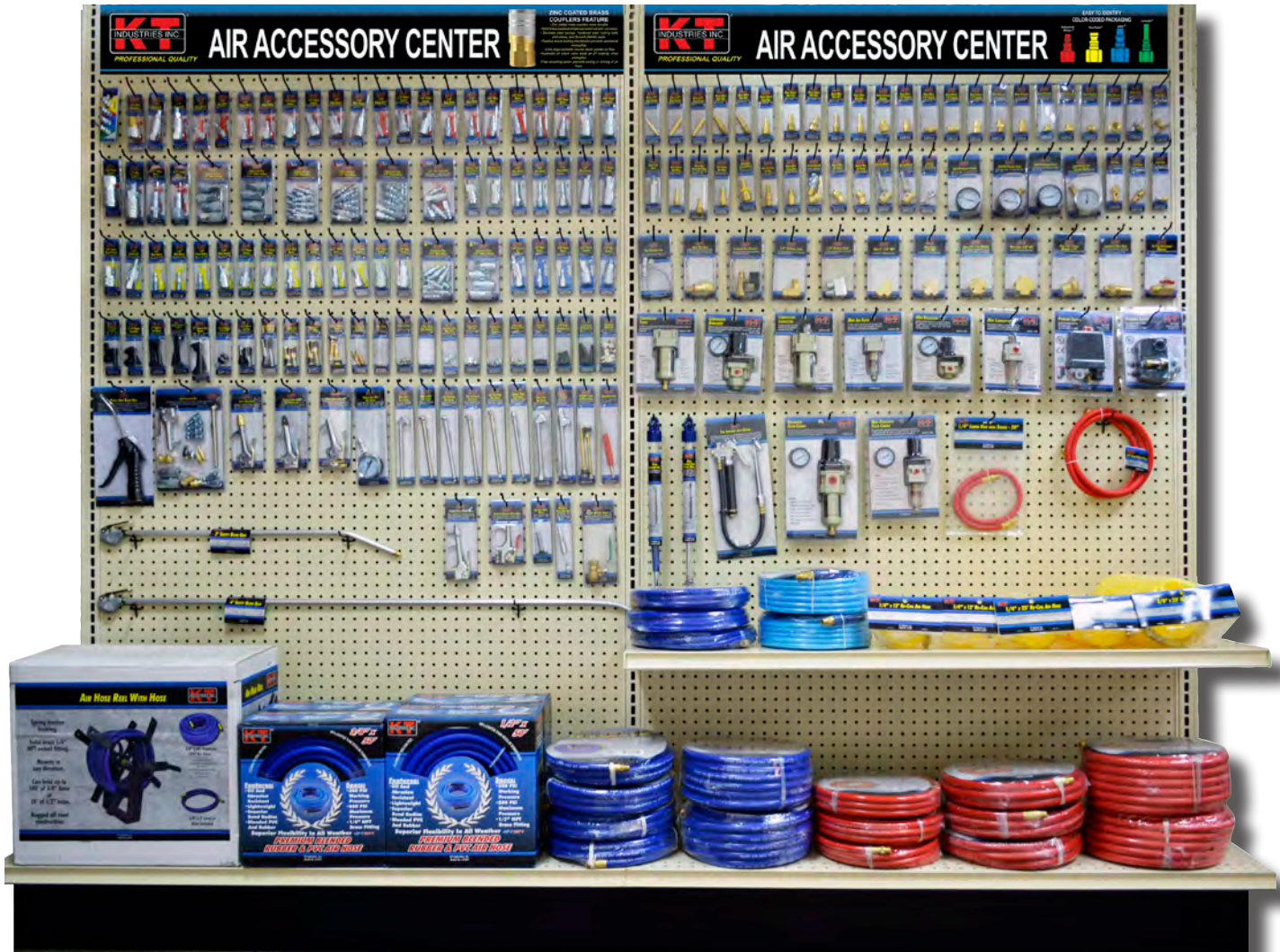
Eye Catching Signage from a distance.



COUPLER TEST BAR

A quick and easy way to identify 1/4" couplers and nipples.

Aisle intruders
helps guide
customers
buying
decision



8' x 72" Full Line Air Accessory Display Model No. 130-72108

This full line air display is designed for most farm stores and larger hardware stores. It has an excellent product mix as well as being capable of handling larger sales volume. SA handy coupler test bar for customer use is included free of charge. KT's signage helps end users make the right buying decision as well as stating KT's quality difference.



8' Full Line Air Display



8' x 72" Full Line Air Accessory Display Model No. 130-72108

K-T	Model No.	Section	Row	Item	Description	Shelf Pack	UPC
	6-5160	1	1	1	Coupler Test Bar	1	083905651607
	6-5109	1	1	2	Industrial 1/4" NPT Push to Connect Coupler	5	083905651096
	6-5100	1	1	3-4	Industrial 1/4" Coupler Kit	5	083905651003
	6-5101	1	1	5-6	Industrial 1/4" M NPT 1/4" Nipple	5	083905651010
	6-5102	1	1	7-8	Industrial 1/4" FM NPT 1/4" Nipple	5	083905651027
	6-5105	1	1	9-10	Industrial 1/4" M NPT 1/4" Coupler	5	083905651058
	6-5106	1	1	11-12	Industrial 1/4" F NPT 1/4" Coupler	5	083905651065
	6-5104	1	1	13	Industrial 1/4" Barbed 1/4" Nipple	5	083905651041
	6-5108	1	1	14	Industrial 1/4" Barbed 1/4" Coupler	5	083905651089
	6-5107	1	1	15	Industrial 3/8" F NPT 1/4" Coupler	5	083905651072
	6-5103	1	1	16-17	Industrial 3/8" M NPT 1/4" Nipple	5	083905651034
	6-5124	1	1	18	Industrial 1/4" M NPT 3/8" Nipple	5	083905651249
	6-5125	1	1	19	Industrial 1/4" F NPT 3/8" Nipple	5	083905651256
	6-5120	1	1	20	Industrial 3/8" M NPT 3/8" Nipple	5	083905651201
	6-5121	1	1	21	Industrial 3/8" F NPT 3/8" Nipple	5	083905651218
	6-5122	1	1	22	Industrial 3/8" M NPT 3/8" Coupler	5	083905651225
	6-5123	1	1	23	Industrial 3/8" F NPT 3/8" Coupler	5	083905651232
	6-5128	1	2	1	1/2" M NPT 1/2" Coupler	5	083905651287
	6-5129	1	2	2	1/2" F NPT 1/2" Coupler	5	083905651294
	6-5126	1	2	3	1/2" M NPT 1/2" Nipple	5	083905651263
	6-5127	1	2	4	1/2" F NPT 1/2" Nipple	5	083905651270
	6-5110	1	2	5-6	Industrial 1/4" F NPT 1/4" Coupler 4pk	5	083905651102
	6-5111	1	2	7-8	Industrial 1/4" M NPT 1/4" Nipple 10pk	5	083905651119
	6-5112	1	2	9	Industrial 1/4" FM NPT 1/4" Nipple 10 pk	5	083905651126
	6-5115	1	2	10	5 Pc Industrial 1/4" Coupler Kit	5	083905651157
	6-5150	1	2	11	Univeral 1/4" M NPT 1/4" Coupler	5	083905651508
	6-5151	1	2	12	Univeral 1/4" F NPT 1/4" Coupler	5	083905651515
	6-5141	1	2	13-14	Lincoln 1/4" M NPT 1/4" Nipple	5	083905651416
	6-5142	1	2	15	Lincoln 1/4" F NPT 1/4" Nipple	5	083905651423
	6-5143	1	2	16	Lincoln 1/4" M NPT 1/4" Coupler	5	083905651430
	6-5144	1	2	17	Lincoln 1/4" F NPT 1/4" Coupler	5	083905651447
	6-5020	1	3	1	Tru-Flate 1/4" NPT Push to Connect Coupler	5	083905650204
	6-5000	1	3	2	Tru-Flate 1/4" Coupler Kit	5	083905650600
	6-5001	1	3	3-4	Tru-Flate 1/4" M NPT 1/4" Nipple	5	083905650617
	6-5002	1	3	5	Tru-Flate 1/4" F NPT 1/4" Nipple	5	083905650624
	6-5004	1	3	6	Tru-Flate 1/4" M NPT 1/4" Coupler	5	083905650648
	6-5005	1	3	7-8	Tru-Flate 1/4" F NPT 1/4" Coupler	5	083905650655
	6-5010	1	3	9	Tru-Flate 1/4" M NPT 3/8" Nipple	5	083905650709
	6-5016	1	3	10	Tru-Flate 1/4" FM NPT 3/8" Nipple	5	083905650761
	6-5011	1	3	11	Tru-Flate 3/8" M NPT 3/8" Nipple	5	083905650716
	6-5012	1	3	12	Tru-Flate 3/8" FM NPT 3/8" Nipple	5	083905650723
	6-5013	1	3	13	Tru-Flate 3/8" FM NPT 3/8" Coupler	5	083905650730
	6-5014	1	3	14	Tru-Flate 3/8" M NPT 3/8" Coupler	5	083905650747
	6-5030	1	3	15	Tru-Flate 1/4" F NPT 1/4" Coupler 4pk	5	083905650303
	6-5031	1	3	16	Tru-Flate 1/4" M NPT 1/4" Nipple 10 pk	5	083905650310
	6-5130	1	3	17	ARO 1/4" Coupler Kit	5	083905651300
	6-5131	1	3	18	ARO 1/4" M NPT 1/4" Nipple	5	083905651317
	6-5132	1	3	19	ARO 1/4" F NPT 1/4" Nipple	5	083905651324
	6-5133	1	3	20	ARO 1/4" M NPT 1/4" Coupler	5	083905651331
	6-5134	1	3	21	ARO 1/4" F NPT 1/4" Coupler	5	083905651348
	6-5506	1	4	1	Tire Valves Snap in .453 X 1-1/4 2 PK	5	083905655063



8' Full Line Air Display

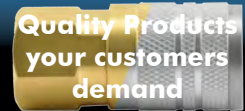


8' x 72" Full Line Air Accessory Display Model No. 130-72108

K-T Model No.	Section	Row	Item	Description	Shelf Pack	UPC
6-5507	1	4	2	Tire Valves Snap in .625 X 1-1/4 2 PK	5	083905655070
6-5508	1	4	3	Tire Valves Snap in .453 X 2" 2 PK	5	083905655087
6-5509	1	4	4	Tire Valves Snap in .453 X 2-1/2 2 PK	5	083905655094
6-5511	1	4	5	Tire Valves Snap in .625 X 2" 2 PK	5	083905655117
6-5513	1	4	6	Clamp in Tubeless Valve 1-1/8	5	083905655131
6-5516	1	4	7	Chrome Snap in Valve .453 short	5	083905655162
6-5517	1	4	8	Chrome Snap in Valve .453 Long	5	083905655179
6-5520	1	4	9	Clamp In Truck Valve .625 x 1-1/2	5	083905655209
6-5521	1	4	10	Clamp in Truck Valve .625 x 2	5	083905655216
6-5527	1	4	11	Tubeless Fast Flow air/liquid tractor valve	5	083905655278
6-5528	1	4	12	New Style tractor core housing lg bore	5	083905655285
6-5530	1	4	13	Valve Core .2108-36 5 Pk	5	083905655308
6-5531	1	4	14	Valve Core Large Bore 10 Pk	5	083905655315
6-5497	1	4	15	2 Way Core Remover	5	083905654974
6-5499	1	4	16	Four way Tire Valve Repair	5	083905654998
6-5540	1	4	17	Valve Cap Nickel Plated w/ Washer	5	083905655407
6-5541	1	4	18	Valve Cap Hex Head	5	083905655414
6-5543	1	4	19	Valve Cap Screwdriver Type	5	083905655438
6-5544	1	4	20	Valve Cap Dome Plastic	5	083905655445
6-5550	1	4	21	Plastic Valve Extensions 3/4"	5	083905655506
6-5551	1	4	22	Plastic Valve Extensions 1-1/4"	5	083905655513
6-5498	1	4	23	Air/Water Adapter Kit	5	083905654981
6-5370	1	5	1	Pistol Grip Blow Gun	5	083905653700
6-5118	1	5	2	18 Pc Industrial 1/4" Coupler Kit	5	083905651188
6-5351	1	5	3	Safety Blow Gun vented Nozzle	5	083905653519
6-5355	1	5	4	Blow Gun w/ Rubber Tip	5	083905653557
6-5357	1	5	5	Deluxe Blow Gun Kit	5	083905653571
6-5420	1	5	6	Dial Tire Gauge 10-60 Lbs.	5	083905654202
6-5410	1	5	7	Dual Foot Service Gauge 20-120	5	083905654103
6-5411	1	5	8	Profession Tire Gauge 10-50 Lbs	5	083905654110
6-5412	1	5	9	Low Pressure Tire Gauge 0-20Lbs	5	083905654127
6-5413	1	5	10	Truck Tire Gauge 20-120 lbs	5	083905654134
6-5415	1	5	11	Tractor Tire Gauge 5-45 Lbs	5	083905654158
6-5416	1	5	12	Tire Gauge 10-50 PSI	5	083905654165
6-5454	1	5	13	Dual Foot Air Chuck	5	083905654547
6-5455	1	5	14	Dual Foot Straight Air Chuck	5	083905654554
6-5524	1	5	15	Clamp in Truck Valve .625 x 4-3/8	5	083905655247
6-5495	1	5	16	Valve Core Tool .453/.625	5	083905654950
6-5360	1	6	1	2' Safety Blow Gun	5	083905653601
6-5361	1	6	2	4' Safety Blow Gun	5	083905653618
6-5350	1	6	3	Syphon Spray Blow Gun	5	083905653502
6-5352	1	6	4	Compact Economy Blow Gun	5	083905653526
5-5493	1	6	5	Tread Depth Gauge 1/32" to 1"	5	083905554939
6-5354	1	6	6	Adj Pocket Blow Gun Industrial Design	5	083905653540
6-5282	1	6	7	Full Port Brass Ball Valve 3/8 X 3/8	5	083905652826
6-5345	1	7	1	Manual Air Hose Reel with 50' Hose	1	083905653458
6-5317	1	7	2	3/8" Blended Flex Hose 50'	5	083905653175
6-5319	1	7	3	1/2" Blended Flex Hose 50'	5	083905653199
6-5312	1	7	4	3/8" PVC 25'	5	083905653120
6-5209	2	1	1	Hose Splicer 1/4"	5	083905652093
6-5210	2	1	2-3	Hose Splicer 3/8"	5	083905652109



8" Full Line Air Display



8' x 72" Full Line Air Accessory Display Model No. 130-72108

K-T	Model No.	Section	Row	Item	Description	Shelf Pack	UPC
	6-5210	2	1	2-3	Hose Splicer 3/8"	5	083905652109
	6-5211	2	1	4-5	Hose End 1/4" M NPT x 3/8" Barb	5	083905650907
	6-5212	2	1	6	Hose End 1/4" F NPT x 3/8" Barb	5	083905652123
	6-5213	2	1	7	Hose End 1/4" F NPT x 1/4" Barb	5	083905652130
	6-5228	2	1	8	Hose End 3/8" F NPT x 3/8" Barb	5	083905652284
	6-5215	2	1	9-10	Hose End 1/4" M NPT x 1/4" Barb	5	083905650914
	6-5216	2	1	11	Reducer Adaptor 3/8 F NPT - 1/4" M NPT	5	083905652161
	6-5217	2	1	12-13	Male Coupler 1/4" NPT	5	083905652178
	6-5221	2	1	14-15	Female Coupling 1/4-1/4	5	083905652215
	6-5222	2	1	16-17	Reducer 3/8M x 1/4M	5	083905650921
	6-5223	2	1	18	Bushing 1/8" FM x 1/4" M	5	083905652239
	6-5224	2	1	19-20	Bushing 1/4" FM x 3/8" M	5	083905652246
	6-5225	2	1	21	Bushing 3/8" FM x 1/2" M	5	083905650938
	6-5465	2	1	22	1/8" Drain Cock	5	083905654653
	6-5475	2	1	23	1/4" NPT Drain Cock	5	083905654752
	6-5491	2	2	1	In-Line Air Tool Filter	5	083905654912
	6-5260	2	2	2	Male Swivel End 1/4" NPT x 1/4" Barb	5	083905652604
	6-5261	2	2	3	FM Swivel End 1/4" NPT x 1/4" Barb	5	083905652611
	6-5262	2	2	4	Male Swivel End 1/4" NPT x 3/8" Barb	5	083905652628
	6-5263	2	2	5	Female Swivel End 3/8" NPT x 3/8" Barb	5	083905652635
	6-5264	2	2	6	Full Port Brass Swivel End 1/4" M X 3/8"	5	083905652642
	6-5265	2	2	7	Swivel Fitting 1/4" FM NPT x 1/4" M NPT	5	083905652659
	6-5460	2	2	8	Air Line Kit	5	083905654608
	6-5450	2	2	9-10	Air Chuck	5	083905654509
	6-5451	2	2	11-12	Air Chuck w/ Clip	5	083905654516
	6-5358	2	2	13	Replacement Inflators 5 pack	5	083905653588
	6-5471	2	2	14	2" X 1/4" NPT 160 PSI Gauge	5	083905654714
	6-5472	2	2	15	1-1/2"x1/8"NPT Rear Mount Gauge 160	5	083905654721
	6-5473	2	2	16	1-1/2"x1/4"NPT Rear Mount Gauge 160	5	083905654738
	6-5474	2	2	17	2 1/2" Oil Filled Gauge 0-250 lbs	5	083905654745
	6-5467	2	2	18	125 PSI Tank Valve	5	083905654677
	6-5468	2	2	19	150 PSI Tank Valve	5	083905654684
	6-5470	2	2	20	Tank Valve 1/8" NPT Max 200 PSI	5	083905654707
	6-5496	2	3	1	Valve Finishing Tool	5	083905654967
	6-5490	2	3	2	In-Line Air Tool Oiler	5	083905654905
	6-5492	2	3	3	In-Line Air Flow Regulator with Gauge	5	083905654929
	6-5267	2	3	4	1/4" Male NPT x 1/2" FM NPT 90 Swivel	5	083905652673
	6-5268	2	3	5	1/4" M NPT x 1/4" FM NPT Univ. Swivel	5	083905652680
	6-5270	2	3	6	1/4" NPT Brass T	5	083905652703
	6-5272	2	3	7	1/4" NPT Brass Cross	5	083905652727
	6-5277	2	3	8	1/4" NPT 3 in One Manifold Flat	5	083905652772
	6-5273	2	3	9	3/8" NPT Brass Cross	5	083905652734
	6-5275	2	3	10	1/4" NPT 3 in One Manifold Tripod	5	083905652758
	6-5466	2	3	11	1/2" Compressor Check Valve	5	083905654660
	6-5469	2	3	12	Manifold Replacement	5	083905654691
	6-5485	2	4	1	Compressor Filter	1	083905654851
	6-5486	2	4	2	Compressor Regulator	1	083905654868
	6-5487	2	4	3	Compressor Lubricator	1	083905654875
	6-5480	2	4	4	Mini Filter	1	083905654806
	6-5481	2	4	5	Mini Regulator	1	083905654813
	6-5482	2	4	6	Mini Lubricator	1	083905654820



8' Full Line Air Display



8' x 72" Full Line Air Accessory Display Model No. 130-72108

K-T Model No.	Section	Row	Item	Description	Shelf Pack	UPC
6-5610	2	4	7	Pressure Switch 125PSI Push Pull	5	083905656107
6-5615	2	4	8	Pressure Switch 175PSI Bend/Lever	5	083905656152
6-5494	2	5	1	Valve Insertion Tool	5	083905654943
6-5414	2	5	2	Dual Foot Service Gauge 20-130	5	083905654141
6-5419	2	5	3	Deluxe Gauge 10-120	5	083905654196
6-5484	2	5	4	Filter Regulator Combo	1	083905654844
6-5483	2	5	5	Mini Filter Regulator Combo	1	083905654837
6-5330	2	5	6	24" Hose Leader with Swivel 1/4"	5	083905653304
6-5331	2	5	7	60" Hose Leader with Swivel 1/4"	5	083905653311
6-5310	2	6	1	1/4" PVC 25'	5	083905653106
6-5315	2	6	2	1/4" Reinforced Poly Hose 50'	5	083905653151
6-5320	2	6	3	1/4" X 12' Recoil Hose	5	083905653205
6-5321	2	6	4	1/4" X 25' Recoil Hose	5	083905653212
6-5325	2	6	5	3/8" X 25' Recoil Hose	5	083905653250
6-5313	2	7	1	3/8" PVC 50'	5	083905653137
6-5300	2	7	2	1/4" Rubber Hose 25'	5	083905653007
6-5305	2	7	3	3/8" Rubber Hose 25'	5	083905653052
6-5306	2	7	4	3/8" Rubber Hose 50'	5	083905653069

Point of Purchase included with the 8' Full Line Air Display

AIR ACCESSORY CENTER
PROFESSIONAL QUALITY

EASY TO IDENTIFY
COLOR-CODED PACKAGING

Industrial Action™ Tru-Plate™ AEO™ Lincoln®

Help your customer identify the product they need.

AIR ACCESSORY CENTER
PROFESSIONAL QUALITY

ZINC COATED BRASS
COUPLERS FEATURE

- Zinc plated make couplers more durable
- Stainless springs and internal steel ball and ball seat prevent rust and corrosion
- Stainless steel springs, hardened steel locking balls and sleeves, and Buna-N O-ring seals
- Positive action locking mechanism prevents accidental uncoupling
- Extra large diameter insures much greater air flow
- Automatic air check valve shuts air off instantly when uncoupled
- Free swiveling action prevents cutting or kinking of air hose

Sell the quality products your customers demand.
Eye Catching Signage from a distance.



COUPLER TEST BAR

A quick and easy way to identify 1/4" couplers and nipples.

Aisle intruders
helps guide
customers
buying
decision



4' x 72" Air Accessory Display
Model No. 130-72104

This display contains a very good mix of products for larger hardware stores and farm stores. It has a product mix that fits most users and item depth to support higher store traffic. A handy coupler test bar for customer use is included free of charge. KT's signage helps end users make the right buying decision as well as stating KT's quality difference.



4' Air Display



4' x 72" Air Accessory Display Model No. 130-72104

K-T	Model No.	Row	Item	Description	Shelf Pack	UPC
	6-5160	1	1	Coupler Test Bar	1	083905651607
	6-5109	1	2	Industrial 1/4" F NPT Push to Connect Coupler	5	083905651096
	6-5100	1	3	Industrial 1/4" Coupler Kit	5	083905651003
	6-5101	1	4-5	Industrial 1/4" M NPT 1/4" Nipple	5	083905651010
	6-5102	1	6	Industrial 1/4" FM NPT 1/4" Nipple	5	083905651027
	6-5105	1	7	Industrial 1/4" M NPT 1/4" Coupler	5	083905651058
	6-5106	1	8	Industrial 1/4" F NPT 1/4" Coupler	5	083905651065
	6-5120	1	9	Industrial 3/8" M NPT 3/8" Nipple	5	083905651201
	6-5121	1	10	Industrial 3/8" F NPT 3/8" Nipple	5	083905651218
	6-5122	1	11	Industrial 3/8" M NPT 3/8" Coupler	5	083905651225
	6-5123	1	12	Industrial 3/8" F NPT 3/8" Coupler	5	083905651232
	6-5103	1	13	Industrial 3/8" M NPT 1/4" Nipple	5	083905651034
	6-5107	1	14	Industrial 3/8" F NPT 1/4" Coupler	5	083905651072
	6-5124	1	15	Industrial 1/4" M NPT 3/8" Nipple	5	083905651249
	6-5110	1	16	Industrial 1/4" F NPT 1/4" Coupler 4pk	5	083905651102
	6-5111	1	17	Industrial 1/4" M NPT 1/4" Nipple 10pk	5	083905651119
	6-5115	1	18	5 Pc Industrial 1/4" Coupler Kit	5	083905651157
	6-5150	1	19	Univeral 1/4" M NPT 1/4" Coupler	5	083905651508
	6-5151	1	20	Univeral 1/4" F NPT 1/4" Coupler	5	083905651515
	6-5020	2	1	Tru-Flate 1/4" F NPT Push to Connect Coupler	5	083905650204
	6-5000	2	2	Tru-Flate 1/4" Coupler Kit	5	083905650600
	6-5001	2	3	Tru-Flate 1/4" M NPT 1/4" Nipple	5	083905650617
	6-5002	2	4	Tru-Flate 1/4" F NPT 1/4" Nipple	5	083905650624
	6-5004	2	5	Tru-Flate 1/4" M NPT 1/4" Coupler	5	083905650648
	6-5005	2	6	Tru-Flate 1/4" F NPT 1/4" Coupler	5	083905650655
	6-5131	2	7	ARO 1/4" M NPT 1/4" Nipple	5	083905651317
	6-5132	2	8	ARO 1/4" F NPT 1/4" Nipple	5	083905651324
	6-5133	2	9	ARO 1/4" M NPT 1/4" Coupler	5	083905651331
	6-5134	2	10	ARO 1/4" F NPT 1/4" Coupler	5	083905651348
	6-5141	2	11	Lincoln 1/4" M NPT 1/4" Nipple	5	083905651416
	6-5142	2	12	Lincoln 1/4" F NPT 1/4" Nipple	5	083905651423
	6-5143	2	13	Lincoln 1/4" M NPT 1/4" Coupler	5	083905651430
	6-5144	2	14	Lincoln 1/4" F NPT 1/4" Coupler	5	083905651447
	6-5209	2	15	Hose Splicer 1/4"	5	083905652093
	6-5210	2	16	Hose Splicer 3/8"	5	083905652109
	6-5211	2	17	Hose End 1/4" M NPT x 3/8" Barb	5	083905650907
	6-5212	2	18	Hose End 1/4" F NPT x 3/8" Barb	5	083905652123
	6-5213	2	19	Hose End 1/4" F NPT x 1/4" Barb	5	083905652130
	6-5215	2	20	Hose End 1/4" M NPT x 1/4" Barb	5	083905650914
	6-5223	2	21	Bushing 1/8" FM x 1/4" M	5	083905652239
	6-5224	2	22	Bushing 1/4" FM x 3/8" M	5	083905652246
	6-5225	2	23	Bushing 3/8" FM x 1/2" M	5	083905650938
	6-5467	3	1	125 PSI Tank Valve	5	083905654677
	6-5468	3	2	150 PSI Tank Valve	5	083905654684
	6-5217	3	3	Male Coupler 1/4" NPT	5	083905652178
	6-5221	3	4	Female Coupling 1/4-1/4	5	083905652215
	6-5216	3	5	Reducer Adaptor 3/8 F NPT - 1/4" M NPT	5	083905652161
	6-5222	3	6	Reducer 3/8M x 1/4M	5	083905650921
	6-5260	3	7	Male Swivel End 1/4" NPT x 1/4" Barb	5	083905652604
	6-5261	3	8	FM Swivel End 1/4" NPT x 1/4" Barb	5	083905652611
	6-5264	3	9	Full Port Brass Swivel End 1/4" M X 3/8"	5	083905652642



4' Air Display



4' x 72" Air Accessory Display Model No. 130-72104

K-T Model No.	Row	Item	Description	Shelf Pack	UPC
6-5470	3	10	Tank Valve 1/8" NPT Max 200 PSI	5	083905654707
6-5465	3	11	1/8" Drain Cock	5	083905654653
6-5475	3	12	1/4" NPT Drain Cock	5	083905654752
6-5460	3	13	Air Line Kit	5	083905654608
6-5450	3	14	Air Chuck	5	083905654509
6-5451	3	15	Air Chuck w/ Clip	5	083905654516
6-5358	3	16	Replacement Inflators 5 pack	5	083905653588
6-5544	3	17	Valve Cap Dome Plastic	5	083905655445
6-5543	3	18	Valve Cap Screwdriver Type	5	083905655438
6-5541	3	19	Valve Cap Hex Head	5	083905655414
6-5530	3	20	Valve Core .2108-36 5 Pk	5	083905655308
6-5506	3	21	Tire Valves Snap in .453 X 1-1/4 2 PK	5	083905655063
6-5507	3	22	Tire Valves Snap in .625 X 1-1/4 2 PK	5	083905655070
6-5508	3	23	Tire Valves Snap in .453 X 2" 2 PK	5	083905655087
6-5471	4	1	2" X 1/4" NPT 160 PSI Gauge	5	083905654714
6-5474	4	2	2 1/2" Oil Filled Gauge 0-250 lbs	5	083905654745
6-5472	4	3	1-1/2"x1/8"NPT Rear Mount Gauge 160	5	083905654721
6-5473	4	4	1-1/2"x1/4"NPT Rear Mount Gauge 160	5	083905654738
6-5268	4	5	1/4"M NPT x 1/4"FM NPT Univ. Swivel	5	083905652680
6-5492	4	6	In-Line Air Flow Regulator with Gauge	5	083905654929
6-5352	4	7	Compact Economy Blow Gun	5	083905653526
6-5496	4	8	Valve Finishing Tool	5	083905654967
6-5499	4	9	Four way Tire Valve Repair	5	083905654998
5-5493	4	10	Tread Depth Gauge 1/32" to 1"	5	083905554939
6-5513	4	11	Clamp in Tubeless Valve 1-1/8	5	083905655131
6-5528	4	12	New Style tractor core housing lg bore	5	083905655285
6-5527	4	13	Tubeless Fast Flow air/liquid tractor valve	5	083905655278
6-5521	4	14	Clamp in Truck Valve .625 x 2	5	083905655216
6-5551	4	14	Plastic Valve Extensions 1-1/4"	5	083905655513
6-5370	5	1	Pistol Grip Blow Gun	5	083905653700
6-5118	5	2	18 Pc Industrial 1/4" Coupler Kit	5	083905651188
6-5495	5	3	Valve Core Tool .453/.625	5	083905654950
6-5410	5	4	Dual Foot Service Gauge 20-120	5	083905654103
6-5411	5	5	Profession Tire Gauge 10-50 Lbs	5	083905654110
6-5412	5	6	Low Pressure Tire Gauge 0-20Lbs	5	083905654127
6-5413	5	7	Truck Tire Gauge 20-120 lbs	5	083905654134
6-5415	5	8	Tractor Tire Gauge 5-45 Lbs	5	083905654158
6-5454	5	9	Dual Foot Air Chuck	5	083905654547
6-5351	5	10	Safety Blow Gun vented Nozzle	5	083905653519
6-5357	5	11	Deluxe Blow Gun Kit	5	083905653571
6-5355	5	12	Blow Gun w/ Rubber Tip	5	083905653557
6-5282	5	13	Full Port Brass Ball Valve 3/8 X 3/8	5	083905652826
6-5354	5	14	Adj Pocket Blow Gun Industrial Design	5	083905653540
6-5414	5	15	Dual Foot Service Gauge 20-130	5	083905654141
6-5270	6	1	1/4" NPT Brass T	5	083905652703
6-5277	6	2	1/4" NPT 3 in One Manifold Flat	5	083905652772
6-5275	6	3	1/4" NPT 3 in One Manifold Tripod	5	083905652758
6-5267	6	4	1/4" Male NPT x 1/2" FM NPT 90 Swivel	5	083905652673
6-5469	6	5	Manifold Replacement	5	083905654691
6-5486	6	6	Compressor Regulator	1	083905654868
6-5485	6	7	Compressor Filter	1	083905654851

K-T Model No.	Row	Item	Description	Shelf Pack	UPC
6-5487	6	8	Compressor Lubricator	1	083905654875
6-5361	7	1	4' Safety Blow Gun	5	083905653618
6-5360	7	2	2' Safety Blow Gun	5	083905653601
6-5330	7	3	24" Hose Leader with Swivel 1/4"	5	083905653304
6-5312	8	1	3/8" PVC 25'	5	083905653120
6-5313	8	2	3/8" PVC 50'	5	083905653137
6-5306	8	3	3/8" Rubber Hose 50'	5	083905653069
6-5317	8	4	3/8" Blended Flex Hose 50'	5	083905653175
6-5320	9	1	1/4" X 12' Recoil Hose	5	083905653205
6-5321	9	2	1/4" X 25' Recoil Hose	5	083905653212
6-5300	9	3	1/4" Rubber Hose 25'	5	083905653007
6-5305	9	4	3/8" Rubber Hose 25'	5	083905653052

Point of Purchase included with the 4' Air Display



AIR ACCESSORIES

**EASY TO IDENTIFY
COLOR-CODED PACKAGING**



**ZINC COATED BRASS
COUPLERS FEATURE**

- Zinc plated brass resists rust and corrosion
- Solid brass bodies and sleeves resist rust and corrosion
- Stainless steel springs, stainless steel locking balls and sleeves and Burst-A-Way® seals
- Positive action locking mechanism prevents accidental uncoupling
- Extra large diameter insures much greater air flow
- Holdovers air check valve drops air off instantly when uncoupled
- Free swiveling action prevents snaring or kinking of air hoses

Help your customer identify the product they need.
Sell the quality products your customers demand.
Eye Catching Signage from a distance.



COUPLER TEST BAR

A quick and easy way to identify 1/4" couplers and nipples.



Width:
48"

PROFESSIONAL QUALITY

AIR ACCESSORIES

EASY TO IDENTIFY
COLOR-CODED PACKAGING

ZINC COATED BRASS
COUPLERS FEATURE

- *Zinc plated make couplers more durable
- *Stainless couplers and brass hose end air connectors
- *Stainless steel springs, hardened steel locking balls and valves, and Buna-N (Nitrile) seals
- *Positive action locking mechanism prevents accidental uncoupling
- *Extra large diameter opening pushes greater air flow
- *Automatic air check valve shuts air off instantly when disconnected
- *Free swiveling action prevents curling or kinking of air hose

AIR																				AIR		AIR		AIR							
6-5109	6-5100	6-5101	6-5102	6-5105	6-5106	6-5103	6-5107	6-5124	6-5001	6-5002	6-5004	6-5005	6-5141	6-5142	6-5143	6-5144	6-5131	6-5132	6-5133	6-5134	6-5150	6-5151	6-5270	6-5272	6-5471	6-5472	6-5473				
AIR																				AIR		AIR		AIR							
6-5160	6-5209	6-5210	6-5211	6-5212	6-5213	6-5215	6-5216	6-5217	6-5221	6-5222	6-5223	6-5224	6-5225	6-5470	6-5475	6-5450	6-5451	6-5358	6-5506	6-5507	6-5544	6-5499									
AIR																				AIR		AIR		AIR							
6-5411	6-5412	6-5413	6-5415	6-5410	6-5454	6-5354	6-5351	6-5355	6-5357																						
K-T AIR																				K-T AIR		K-T AIR									
6-5360																				6-5330		6-5118		6-5370							
K-T AIR																				K-T AIR		K-T AIR									
6-5361																															
K-T AIR		K-T AIR		K-T AIR		K-T AIR		K-T AIR																							
6-5320		6-5321		6-5310		6-5305		6-5306																							

4' x 36" Starter Air Accessory Display
Model No. 130-36103

Height:
36"

www.ktindustries.net

21



4' Hardware Air Display



4' x 36" Starter Air Accessory Display Model No. 130-36103

This display contains a strong mix of products for most hardware stores. It has a product mix that fits most DIY users. A handy coupler test bar for customer use is included free of charge. KT's signage helps end users make the right buying decision as well as stating KT's quality difference.

K-T Model No.	Row	Item	Description	Shelf Pack	UPC
6-5109	1	1	Industrial 1/4" F NPT Push to Connect Coupler	5	083905651096
6-5100	1	2	Industrial 1/4" Coupler Kit	5	083905651003
6-5101	1	3	Industrial 1/4" M NPT 1/4" Nipple	5	083905651010
6-5102	1	4	Industrial 1/4" FM NPT 1/4" Nipple	5	083905651027
6-5105	1	5	Industrial 1/4" M NPT 1/4" Coupler	5	083905651058
6-5106	1	6	Industrial 1/4" F NPT 1/4" Coupler	5	083905651065
6-5103	1	7	Industrial 3/8" M NPT 1/4" Nipple	5	083905651034
6-5107	1	8	Industrial 3/8" F NPT 1/4" Coupler	5	083905651072
6-5124	1	9	Industrial 1/4" M NPT 3/8" Nipple	5	083905651249
6-5001	1	10	Tru-Flate 1/4" M NPT 1/4" Nipple	5	083905650617
6-5002	1	11	Tru-Flate 1/4" F NPT 1/4" Nipple	5	083905650624
6-5004	1	12	Tru-Flate 1/4" M NPT 1/4" Coupler	5	083905650648
6-5005	1	13	Tru-Flate 1/4" F NPT 1/4" Coupler	5	083905650655
6-5141	1	14	Lincoln 1/4" M NPT 1/4" Nipple	5	083905651416
6-5142	1	15	Lincoln 1/4" F NPT 1/4" Nipple	5	083905651423
6-5143	1	16	Lincoln 1/4" M NPT 1/4" Coupler	5	083905651430
6-5144	1	17	Lincoln 1/4" F NPT 1/4" Coupler	5	083905651447
6-5131	1	18	ARO 1/4" M NPT 1/4" Nipple	5	083905651317
6-5132	1	19	ARO 1/4" F NPT 1/4" Nipple	5	083905651324
6-5133	1	20	ARO 1/4" M NPT 1/4" Coupler	5	083905651331
6-5134	1	21	ARO 1/4" F NPT 1/4" Coupler	5	083905651348
6-5150	1	22	Univeral 1/4" M NPT 1/4" Coupler	5	083905651508
6-5151	1	23	Univeral 1/4" F NPT 1/4" Coupler	5	083905651515
6-5160	2	1	Coupler Test Bar	1	083905651607
6-5209	2	2	Hose Splicer 1/4"	5	083905652093
6-5210	2	3	Hose Splicer 3/8"	5	083905652109
6-5211	2	4	Hose End 1/4" M NPT x 3/8" Barb	5	083905650907
6-5212	2	5	Hose End 1/4" F NPT x 3/8" Barb	5	083905652123
6-5213	2	6	Hose End 1/4" F NPT x 1/4" Barb	5	083905652130
6-5215	2	7	Hose End 1/4" M NPT x 1/4" Barb	5	083905650914
6-5216	2	8	Reducer Adaptor 3/8 F NPT - 1/4" M NPT	5	083905652161
6-5217	2	9	Male Coupler 1/4" NPT	5	083905652178
6-5221	2	10	Female Coupling 1/4-1/4	5	083905652215
6-5222	2	11	Reducer 3/8M x 1/4M	5	083905650921
6-5223	2	12	Bushing 1/8" FM x 1/4" M	5	083905652239
6-5224	2	13	Bushing 1/4" FM x 3/8" M	5	083905652246
6-5225	2	14	Bushing 3/8" FM x 1/2" M	5	083905650938
6-5470	2	15	Tank Valve 1/8" NPT Max 200 PSI	5	083905654707
6-5475	2	16	1/4" NPT Drain Cock	5	083905654752
6-5450	2	17	Air Chuck	5	083905654509
6-5451	2	18	Air Chuck w/ Clip	5	083905654516
6-5358	2	19	Replacement Inflators 5 pack	5	083905653588
6-5506	2	20	Tire Valves Snap in .453 X 1-1/4 2 PK	5	083905655063
6-5507	2	21	Tire Valves Snap in .625 X 1-1/4 2 PK	5	083905655070
6-5544	2	22	Valve Cap Dome Plastic	5	083905655445
6-5499	2	23	Four way Tire Valve Repair	5	083905654998



4' Hardware Air Display



K-T Model No.	Row	Item	Description	Shelf Pack	UPC
6-5411	3	1	Profession Tire Gauge 10-50 Lbs	5	083905654110
6-5412	3	2	Low Pressure Tire Gauge 0-20Lbs	5	083905654127
6-5413	3	3	Truck Tire Gauge 20-120 lbs	5	083905654134
6-5415	3	4	Tractor Tire Gauge 5-45 Lbs	5	083905654158
6-5410	3	5	Dual Foot Service Gauge 20-120	5	083905654103
6-5454	3	6	Dual Foot Air Chuck	5	083905654547
6-5354	3	7	Adj Pocket Blow Gun Industrial Design	5	083905653540
6-5351	3	8	Safety Blow Gun vented Nozzle	5	083905653519
6-5355	3	9	Blow Gun w/ Rubber Tip	5	083905653557
6-5357	3	10	Deluxe Blow Gun Kit	5	083905653571
6-5270	3	11	1/4" NPT Brass T	5	083905652703
6-5272	3	12	1/4" NPT Brass Cross	5	083905652727
6-5471	3	13	2" X 1/4" NPT 160 PSI Gauge	5	083905654714
6-5472	3	14	1-1/2"x1/8"NPT Rear Mount Gauge 160	5	083905654721
6-5473	3	15	1-1/2"x1/4"NPT Rear Mount Gauge 160	5	083905654738
6-5360	4	1	2' Safety Blow Gun	5	083905653601
6-5330	4	2	24" Hose Leader with Swivel 1/4"	5	083905653304
6-5118	4	3	18 Pc Industrial 1/4" Coupler Kit	5	083905651188
6-5370	4	4	Pistol Grip Blow Gun	5	083905653700
6-5361	5	1	4' Safety Blow Gun	5	083905653618
6-5320	6	1	1/4" X 12' Recoil Hose	5	083905653205
6-5321	6	2	1/4" X 25' Recoil Hose	5	083905653212
6-5310	6	3	1/4" PVC 25'	5	083905653106
6-5305	6	4	3/8" Rubber Hose 25'	5	083905653052
6-5306	6	5	3/8" Rubber Hose 50'	5	083905653069

Point of Purchase included with the 4' Starter Air Display

AIR ACCESSORIES

EASY TO IDENTIFY COLOR-CODED PACKAGING

ZINC COATED BRASS COUPLERS FEATURE

- Zinc plated make couplers more durable.
- Solid brass bodies and sleeves resist rust and corrosion.
- Stainless steel springs, hardened steel locking balls and sleeves, and Super-N Nylon balls.
- Positive action locking mechanism prevents accidental uncoupling.
- Extra large diameter inserts much greater air flow.
- Automatic air check valve shuts air off instantly when uncoupled.
- Free swiveling action prevents cutting or kinking of air hose.

Help your customer identify the product they need.
 Sell the quality products your customers demand.
 Eye Catching Signage from a distance.



COUPLER TEST BAR

A quick and easy way to identify 1/4" couplers and nipples.

Air Accessory Displays



**TOOLS AND WELDING
SUPPLIES
FOR THE PROFESSIONAL**

**Your One Source
For Exceptional
Quality and Service**

Distributed By:

Version 14.7.1
K-T Industries
P.O. Box 123
3112 Northwest Boulevard
Sheldon, Iowa 51201
Phone (712) 324-5361 Fax (712) 324-2930