

Drawer Slides

Retail Buyers Guide



KNAPE & VOGT®

Drawer Slides

For over 100 years, Knappe & Vogt® has been an industry leader in the design and production of home hardware and storage solutions. We invite you to review our extensive line of drawer slides for the retail marketplace. All KV slides meet or exceed KCMA and BHMA performance standards and are covered by a limited lifetime warranty.



Model	Weight Class	Key Features	Mount	Finish(es)	Recommended Use
Retail Slide Overview					
1129	35 lbs.	Friction Release	Under	Zinc	Kitchen Cabinets, Bathroom Vanities
1175	50 lbs.	Lift-Out Release	Under	Zinc	Kitchen Cabinets, Bathroom Vanities
1260	60 lbs.	Hold-In, Lever Release	Side	Zinc	Kitchen Cabinets, Bathroom Vanities, Residential Furniture
1284	75 lbs.	Lift Out Release	Side	White, Almond	Kitchen Cabinets, Bathroom Vanities, Residential Furniture
1300	75 lbs.	Lever Release	Side	Zinc	Kitchen Cabinets, Bathroom Vanities, Store Fixtures
1805	75 lbs.	Self-Close, Lift Out Release	Side	White, Cream White	Kitchen Cabinets, Bathroom Vanities, Residential Furniture
8400	100 lbs.	Hold-In, Lever Release	Side	Anochrome, Ebony Black, White	Desk and Credenza Box Drawers, Cabinetry, Architectual Woodwork
8450FM	100 lbs.	Soft-Close, Lever Release	Side	Anochrome	Desk and Credenza Box Drawers, Cabinetry, Architectual Woodwork
TT100*	100 lbs.	Hold-In, Lever Release	Side	Zinc	Desk and Credenza Box Drawers, Cabinetry, Architectual Woodwork

*1 year limited warranty.



Light-Duty Slides

KV light-duty slides are the perfect choice for home applications where a durable, simple-to-install slide is required. They are highly cost effective and easy to install and replace. They are widely used in bathroom vanities, built-ins, and as replacement slides in existing cabinetry.

1129 Center Under Drawer Slide

The 1129 Slide is 3/4 extension, center undermount, ball-bearing slide that is perfect for light-duty applications in kitchens, baths and other home applications.

- 35 lbs. load class
- Sizes: 12", 14", 16", 18", 20", 22", 24"

 Zinc

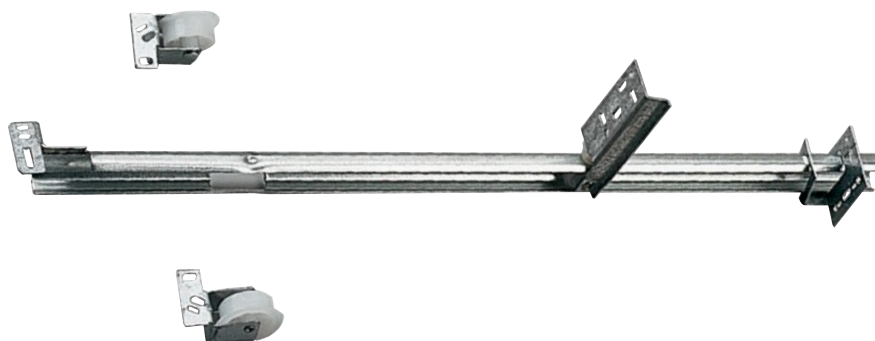


1175 3/4 Extension Center Under Drawer Slide

The 1175 Slide center mounts with two roller guides that create a smooth and secure ride. It mounts with staples or screws for quick installation. Drawers lift out for easy removal.

- 50 lbs. load class
- Sizes: 18", 20", 22", 22-5/8", 24"

 Zinc



Package Features

- Trilingual
 - Reach expanding and international markets
- Instructions Included
 - Easy to read graphic visuals
 - Included with all products
- Hardware Included
 - All hardware and screws are included
 - Easier to shop with fewer items to purchase
- Easy to Merchandise
 - Planograms can be customized to fit your needs
 - See back for planogram examples



Medium-Duty Slides

KV medium-duty slides are the perfect choice for home applications where a durable, basic slide is required. They are highly cost effective and easy to install. They are widely used in kitchen cabinets, bathroom vanities, architectural woodwork and built-ins.



1260 Side-Mount Slide

The 1260 Series is built for kitchen cabinets, architectural woodwork and bathroom vanities. All models have 3/4 extension travel, a positive stop, rollers that operate on ball bearings and a lever disconnect.

- 60 lbs. load class
- Sizes: 12", 14", 16", 18", 20", 22", 24"

 Zinc



Optional 1123-101P Rear Mounting Bracket

- Simplifies Installation
- Non-Handed Design



1284 Epoxy-Coated Side-Mount Slide

The 1284 Series is epoxy-coated and designed for kitchen cabinets, architectural woodwork, bathroom vanities and residential furniture. All models include a positive stop and a lift-out disconnect.

- 75 lbs. load class
- Sizes: 300mm, 350mm, 400mm, 450mm, 500mm, 550mm, 600mm, 650mm

 Almond  White



Optional 1284-4P Rear Mounting Bracket

- Simplifies Installation





1300 Side-Mount Slide

The 1300 Series is designed for kitchen cabinets, architectural woodwork, bathroom vanities and store fixture applications where a lever release is desired. The 1300 also features ball-bearing movement, a positive stop lever and a stay-close design.

- 75 lbs. load class
- Sizes: 14", 16", 18", 20", 22", 24", 26", 28"

 Zinc



1805 Euro-Style Slide

The 1805 Euro-Style Slide is an epoxy-coated, three-quarter extension slide for use in kitchen cabinet, commercial millwork, home office and furniture applications where self-closing and a lift-out disconnect is desired. Additional rear mounting sockets are available for face frame applications. A single captive roller limits side play for improved lateral stability.

- 75 lbs. load class
- Sizes: 300mm, 350mm, 400mm, 450mm, 500mm, 550mm, 600mm, 650mm

 Cream White  White



Optional 1805-101P Rear Mounting Bracket

- Simplifies Installation



Package Features

- Trilingual
 - Reach expanding and international markets
- Instructions Included
 - Easy to read graphic visuals
 - Included with all products
- Hardware Included
 - All hardware and screws are included
 - Easier to shop with fewer items to purchase
- Easy to Merchandise
 - Planograms can be customized to fit your needs
 - See back for planogram examples



Heavy-Duty Precision Slides




KV Precision Ball Bearing Slides contain more ball bearings per inch than most slides and are formed with a precision roll-formed ball race, making for some of the quietest and smoothest slides in the industry. Convenience and safety features – such as direct access mounting, 32mm and traditional hole patterns, cushioned stops, anti-scrape bushings and anti-rebound stay-close – provide options that span a wide range of drawer applications.



8400 Side-Mount Drawer Slide

The 8400 Series of telescopic precision slides are specially designed for use in kitchen cabinet drawer applications. A non-handed design allows for left- or right-sided installation, and a non-handed lever disconnect allows for easier removal and installation

- Precision roll-formed members provide superior performance
- 100 lbs. load class
- Sizes: 8", 10", 12", 14", 16", 18", 20", 22", 24", 26", 28"
- Direct access mounting
- Rear mounting brackets available
- Lever disconnect
- Full Extension

 Anochrome  White
 Ebony Black

Optional 8403P Rear Mounting Bracket

- For Face Frame Cabinets
- Non-Handed Snap-On Design





8450FM Soft-Close Drawer Slide

The new 8450FM Series is a step forward in side-mounted, ball-bearing, soft-close drawer slides. 8450FM slides include a patented Force-Management™ module which utilizes an innovative rack and gear system that brings the drawer box to a smooth, quiet, secure close.

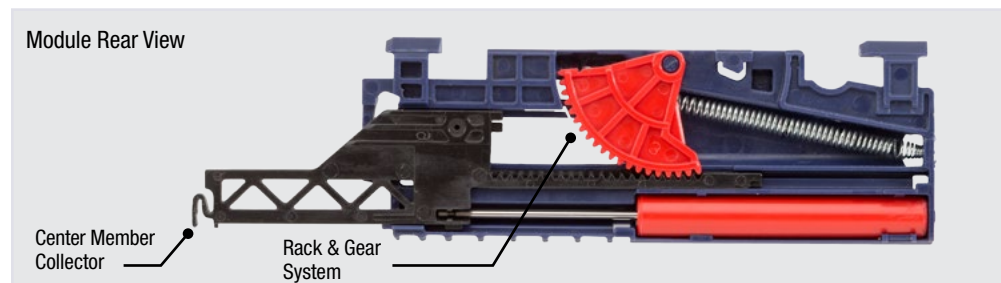
- 100 lbs. load class
- Sizes: 12", 14", 16", 18", 20", 22", 24", 26", 28"
- Fully-integrated soft-close module
- Traditional and 32mm mounting hole configurations
- Full and Over-Travel models
- Non-handed lever release
- Direct access mounting

Anochrome

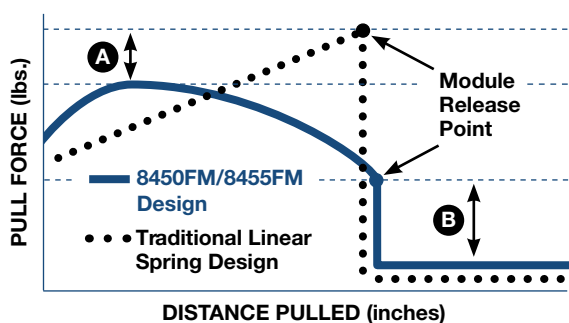


Optional 8403P Rear Mounting Bracket

- For Face Frame Cabinets
- Non-Handed Snap-On Design



Soft-Close Module Force Curve



8450FM Soft-Close Slides have:

A lower peak pull force--making them the easiest soft-close slides to open.

Significantly less drop off force at the module release point--eliminating the "jerkiness" of traditional linear spring designs.

Heavy-Duty Precision Slides (continued)



True-Trac™ 100 Side-Mount Drawer Slide

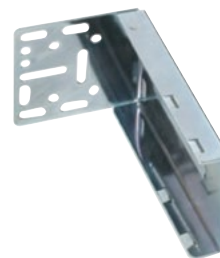
Tru-Trac 100 is a smart and economical choice for a 100-pound class, full-extension ball-bearing slide solution. Designed to meet the needs of today's value-conscious consumer, Tru-Trac 100 features a non-handed design, industry standard 1/2" side clearance and a lever disconnect for easy drawer removal. Ball-bearing construction delivers a smooth operation and a positive stop bumper provides an anti-rebound feature.

- 100 Lbs. load class
- Sizes: 250mm, 300mm, 350mm, 400mm, 450mm, 500mm, 550mm, 600mm, 650mm, 700mm
- Non-handed design
- Face frame mounting hole
- Lever disconnect for easy drawer removal
- 1 Year warranty
- Full Extension

 Zinc

Optional TT401P Rear Mounting Bracket

- For Face Frame Cabinets
- Non-Handed Snap-On Design



Package Features

- Trilingual
 - Reach expanding and international markets
- Instructions Included
 - Easy to read graphic visuals
 - Included with all products
- Hardware Included
 - All hardware and screws are included
 - Easier to shop with fewer items to purchase
- Easy to Merchandise
 - Planograms can be customized to fit your needs
 - See back for planogram examples



Item	Description	Weight Class	Finish	Unit Dimensions			Unit Pack Qty.	Unit Wt. (lbs.)	Master Carton Cubic in.	Master Pack Qty.	Master Carton Wt. (lbs.)	UPC Code	SCM Code
Light-Duty Slides													
1129													
1129P ZC 12	12 in. Under-Drawer Slide	35-lbs.	Zinc	12 in.	1.93 in.	1.35 in.	1	0.77	274.04	10	7.79	029274179205	10029274179202
1129P ZC 14	14 in. Under-Drawer Slide	35-lbs.	Zinc	14 in.	1.93 in.	1.35 in.	1	0.90	360.82	10	9.09	029274179212	10029274179219
• 1129P ZC 16	16 in. Under-Drawer Slide	35-lbs.	Zinc	16 in.	1.93 in.	1.35 in.	1	1.04	404.22	10	10.38	029274130527	20029274130521
• 1129P ZC 18	18 in. Under-Drawer Slide	35-lbs.	Zinc	18 in.	1.93 in.	1.35 in.	1	1.15	447.61	10	11.49	029274130534	20029274130538
• 1129P ZC 20	20 in. Under-Drawer Slide	35-lbs.	Zinc	20 in.	1.93 in.	1.35 in.	1	1.26	491.01	10	12.59	029274130541	20029274130545
• 1129P ZC 22	22 in. Under-Drawer Slide	35-lbs.	Zinc	22 in.	1.93 in.	1.35 in.	1	1.37	534.40	10	13.69	029274130558	20029274130552
1129P ZC 24	24 in. Under-Drawer Slide	35-lbs.	Zinc	24 in.	1.93 in.	1.35 in.	1	1.59	577.80	10	15.58	029274179229	10029274179226
1175													
1175P ZC 18	18 in. Under-Drawer Slide	50-lbs.	Zinc	18 in.	1/2 in.	0.97 in.	1	0.62	502.73	10	6.17	029274001407	10029274001404
1175P ZC 20	20 in. Under-Drawer Slide	50-lbs.	Zinc	20 in.	1/2 in.	0.97 in.	1	0.70	593.50	10	6.69	029274001414	10029274001411
• 1175P ZC 22-5/8	22-5/8 in. Under-Drawer Slide	50-lbs.	Zinc	22-5/8 in.	1/2 in.	0.97 in.	1	0.73	663.61	10	7.38	029274001421	10029274001428
1175P ZC 24	24 in. Under-Drawer Slide	50-lbs.	Zinc	24 in.	1/2 in.	0.97 in.	1	0.77	663.61	10	7.74	029274001438	10029274001435
Medium-Duty Slides													
1260													
1260P 12	12 in. Side-Mount Slide	60-lbs.	Zinc	12 in.	1/2 in.	3-1/8 in.	2	1.06	449.11	10	10.58	029274001452	10029274001459
1260P 14	14 in. Side-Mount Slide	60-lbs.	Zinc	14 in.	1/2 in.	3-1/8 in.	2	1.20	449.11	10	11.98	029274001469	10029274001466
• 1260P 16	16 in. Side-Mount Slide	60-lbs.	Zinc	16 in.	1/2 in.	3-1/8 in.	2	1.38	502.73	10	13.38	029274001476	10029274001473
• 1260P 18	18 in. Side-Mount Slide	60-lbs.	Zinc	18 in.	1/2 in.	3-1/8 in.	2	1.48	593.50	10	14.78	029274001483	10029274001480
• 1260P 20	20 in. Side-Mount Slide	60-lbs.	Zinc	20 in.	1/2 in.	3-1/8 in.	2	1.61	609.98	10	16.17	029274001490	10029274001497
• 1260P 22	22 in. Side-Mount Slide	60-lbs.	Zinc	22 in.	1/2 in.	3-1/8 in.	2	1.76	663.61	10	17.57	029274001506	10029274001503
1260P 24	24 in. Side-Mount Slide	60-lbs.	Zinc	24 in.	1/2 in.	3-1/8 in.	2	1.89	717.23	10	18.97	029274001513	10029274001510
• 1123-101P	Rear Mounting Bracket	N/A	Plastic	-	-	-	2	.015	42.35	10	7.65	029274345273	10029274345270
1284													
1284P ALM 300	300mm Side-Mount Slide	75-lbs.	Almond	300mm	1/2 in.	1-9/32 in.	2	1.09	395.48	10	10.87	029274002404	10029274002401
1284P ALM 350	350mm Side-Mount Slide	75-lbs.	Almond	350mm	1/2 in.	1-9/32 in.	2	1.26	395.48	10	12.57	029274002411	10029274002418
1284P ALM 400	400mm Side-Mount Slide	75-lbs.	Almond	400mm	1/2 in.	1-9/32 in.	2	1.43	449.11	10	14.27	029274002428	10029274002425
1284P ALM 450	450mm Side-Mount Slide	75-lbs.	Almond	450mm	1/2 in.	1-9/32 in.	2	1.60	502.73	10	15.97	029274002435	10029274002432
1284P ALM 500	500mm Side-Mount Slide	75-lbs.	Almond	500mm	1/2 in.	1-9/32 in.	2	1.77	593.50	10	17.67	029274002442	10029274002449
1284P ALM 550	550mm Side-Mount Slide	75-lbs.	Almond	550mm	1/2 in.	1-9/32 in.	2	1.94	609.98	10	19.37	029274002459	10029274002456
1284P ALM 600	600mm. Side-Mount Slide	75-lbs.	Almond	600mm	1/2 in.	1-9/32 in.	2	2.10	663.61	10	21.07	029274002466	10029274002463
1284P ALM 650	650mm. Side-Mount Slide	75-lbs.	Almond	650mm	1/2 in.	1-9/32 in.	2	2.27	717.23	10	22.77	029274002473	10029274002470
1284P WH 300	300mm Side-Mount Slide	75-lbs.	White	300mm	1/2 in.	1-9/32 in.	2	1.09	395.48	10	10.87	029274002480	10029274002487
1284P WH 350	350mm Side-Mount Slide	75-lbs.	White	350mm	1/2 in.	1-9/32 in.	2	1.26	395.48	10	12.57	029274002497	10029274002494
• 1284P WH 400	400mm Side-Mount Slide	75-lbs.	White	400mm	1/2 in.	1-9/32 in.	2	1.43	449.11	10	14.27	029274002503	10029274002500
• 1284P WH 450	450mm Side-Mount Slide	75-lbs.	White	450mm	1/2 in.	1-9/32 in.	2	1.60	502.73	10	15.97	029274002510	10029274002517
• 1284P WH 500	500mm Side-Mount Slide	75-lbs.	White	500mm	1/2 in.	1-9/32 in.	2	1.77	593.50	10	17.67	029274002527	10029274002524
• 1284P WH 550	550mm Side-Mount Slide	75-lbs.	White	550mm	1/2 in.	1-9/32 in.	2	1.94	609.98	10	19.37	029274002534	10029274002531
1284P WH 600	600mm. Side-Mount Slide	75-lbs.	White	600mm	1/2 in.	1-9/32 in.	2	2.10	663.61	10	21.07	029274002541	10029274002548
1284P WH 650	650mm. Side-Mount Slide	75-lbs.	White	650mm	1/2 in.	1-9/32 in.	2	2.27	717.23	10	22.77	029274039110	10029274039117
• 1284-4P	Rear Mounting Bracket	N/A	Plastic	-	-	-	2	.024	42.35	10	4.2	029274345280	10029274345287
1300													
1300P ZC 14	14 in. Side-Mount Slide	75-lbs.	Zinc	14 in.	1/2 in.	3 in.	2	1.37	514.41	10	13.64	029274001582	10029274001589
• 1300P ZC 16	16 in. Side-Mount Slide	75-lbs.	Zinc	16 in.	1/2 in.	3 in.	2	1.53	584.16	10	15.30	029274001599	10029274001596
• 1300P ZC 18	18 in. Side-Mount Slide	75-lbs.	Zinc	18 in.	1/2 in.	3 in.	2	1.69	653.91	10	16.96	029274001605	10029274001602
• 1300P ZC 20	20 in. Side-Mount Slide	75-lbs.	Zinc	20 in.	1/2 in.	3 in.	2	1.86	723.66	10	18.62	029274001612	10029274001619
• 1300P ZC 22	22 in. Side-Mount Slide	75-lbs.	Zinc	22 in.	1/2 in.	3 in.	2	2.03	793.41	10	20.29	029274001629	10029274001626
1300P ZC 24	24 in. Side-Mount Slide	75-lbs.	Zinc	24 in.	1/2 in.	3 in.	2	2.20	863.16	10	21.95	029274001636	10029274001633
1300P ZC 26	26 in. Side-Mount Slide	75-lbs.	Zinc	26 in.	1/2 in.	3 in.	2	2.36	932.91	10	23.61	029274001643	10029274001640
1300P ZC 28	28 in. Side-Mount Slide	75-lbs.	Zinc	28 in.	1/2 in.	3 in.	2	2.52	1002.66	10	25.27	029274001650	10029274001657
1805													
1805H CW 300	300mm Side-Mount Slide	75-lbs.	C. White	300mm	12.5mm	35.5mm	2	0.87	559.82	20	17.44	029274179410	10029274179417
1805H CW 350	350mm Side-Mount Slide	75-lbs.	C. White	350mm	12.5mm	35.5mm	2	1.01	639.80	20	20.35	029274179427	10029274179424
1805H CW 400	400mm Side-Mount Slide	75-lbs.	C. White	400mm	12.5mm	35.5mm	2	1.16	719.77	20	23.26	029274179434	10029274179431
1805H CW 450	450mm Side-Mount Slide	75-lbs.	C. White	450mm	12.5mm	35.5mm	2	1.30	799.74	20	26.17	029274179441	10029274179448
1805H CW 500	500mm Side-Mount Slide	75-lbs.	C. White	500mm	12.5mm	35.5mm	2	1.45	879.72	20	29.07	029274179458	10029274179455
1805H CW 550	550mm Side-Mount Slide	75-lbs.	C. White	550mm	12.5mm	35.5mm	2	1.59	959.69	20	31.98	029274179465	10029274179462
1805H CW 600	600mm Side-Mount Slide	75-lbs.	C. White	600mm	12.5mm	35.5mm	2	1.74	1039.67	20	34.89	029274179472	10029274179479
1805H WH 300	300mm Side-Mount Slide	75-lbs.	White	300mm	12.5mm	35.5mm	2	0.87	559.82	20	17.44	029274179489	10029274179486
• 1805H WH 350	350mm Side-Mount Slide	75-lbs.	White	350mm	12.5mm	35.5mm	2	1.01	639.80	20	20.35	029274179496	10029274179493
• 1805H WH 400	400mm Side-Mount Slide	75-lbs.	White	400mm	12.5mm	35.5mm	2	1.16	719.77	20	23.26	029274179502	10029274179509
• 1805H WH 450	450mm Side-Mount Slide	75-lbs.	White	450mm	12.5mm	35.5mm	2	1.30	799.74	20	26.17	029274179519	10029274179516
• 1805H WH 500	500mm Side-Mount Slide	75-lbs.	White	500mm	12.5mm	35.5mm	2	1.45	879.72	20	29.07	029274179533	10029274179530
• 1805H WH 550	550mm Side-Mount Slide	75-lbs.	White	550mm	12.5mm	35.5mm	2	1.59	959.69	20	31.98	029274179540	10029274179547
• 1805H WH 600	600mm Side-Mount Slide	75-lbs.	White	600mm	12.5mm	35.5mm	2	1.74	1039.67	20	34.89	029274179557	10029274179554
• 1805-101P	Rear Mounting Bracket	N/A	Plastic	-	-	-	2	0.37	1336.72	20	9.28	029274345297	10029274345294

		Weight Class	Finish	Unit Dimensions			Unit Pack	Unit Wt.	Master Carton	Master Pack	Master Carton		
Item	Description			L	W	H	Qty.	(lbs.)	Cubic in.	Qty.	Wt. (lbs.)	UPC Code	SCM Code
Heavy-Duty Precision Slides													
8400													
8400P 8	8 in. Side-Mount Slide	100-lbs.	Anochrome	8 in.	1/2 in.	1 in.	2	1.26	274.04	10	12.56	029274234454	10029274234451
8400P 10	10 in. Side-Mount Slide	100-lbs.	Anochrome	10 in.	1/2 in.	1 in.	2	1.57	274.04	10	15.70	029274109868	10029274109865
8400P 12	12 in. Side-Mount Slide	100-lbs.	Anochrome	12 in.	1/2 in.	1 in.	2	1.92	274.04	10	19.24	029274109875	10029274109872
8400P 14	14 in. Side-Mount Slide	100-lbs.	Anochrome	14 in.	1/2 in.	1 in.	2	2.27	317.43	10	22.77	029274109882	10029274109889
• 8400P 16	16 in. Side-Mount Slide	100-lbs.	Anochrome	16 in.	1/2 in.	1 in.	2	2.63	360.82	10	26.31	029274109899	10029274109896
• 8400P 18	18 in. Side-Mount Slide	100-lbs.	Anochrome	18 in.	1/2 in.	1 in.	2	2.98	404.22	10	29.85	029274109905	10029274109902
• 8400P 20	20 in. Side-Mount Slide	100-lbs.	Anochrome	20 in.	1/2 in.	1 in.	2	3.38	447.61	10	33.38	029274109912	10029274109919
• 8400P 22	22 in. Side-Mount Slide	100-lbs.	Anochrome	22 in.	1/2 in.	1 in.	2	3.69	491.01	10	36.92	029274109929	10029274109926
• 8400P 24	24 in. Side-Mount Slide	100-lbs.	Anochrome	24 in.	1/2 in.	1 in.	2	4.05	534.40	10	40.45	029274109936	10029274109933
8400P 26	26 in. Side-Mount Slide	100-lbs.	Anochrome	26 in.	1/2 in.	1 in.	2	4.40	577.80	10	43.99	029274109943	10029274109940
8400P 28	28 in. Side-Mount Slide	100-lbs.	Anochrome	28 in.	1/2 in.	1 in.	2	4.75	621.19	10	47.53	029274109950	10029274109957
8400P EB 16	16 in. Side-Mount Slide	100-lbs.	Ebony BLK	16 in.	1/2 in.	1 in.	2	2.63	360.82	10	26.31	029274129514	10029274129511
8400P EB 18	18 in. Side-Mount Slide	100-lbs.	Ebony BLK	18 in.	1/2 in.	1 in.	2	2.98	404.22	10	29.85	029274129521	10029274129528
8400P EB 20	20 in. Side-Mount Slide	100-lbs.	Ebony BLK	20 in.	1/2 in.	1 in.	2	3.34	447.61	10	33.38	029274129538	10029274129535
8400P EB 22	22 in. Side-Mount Slide	100-lbs.	Ebony BLK	22 in.	1/2 in.	1 in.	2	3.70	491.01	10	36.92	029274129545	10029274129542
8400P EB 24	24 in. Side-Mount Slide	100-lbs.	Ebony BLK	24 in.	1/2 in.	1 in.	2	4.05	534.40	10	40.45	029274136949	10029274136946
8400P WH 16	16 in. Side-Mount Slide	100-lbs.	White	16 in.	1/2 in.	1 in.	2	2.63	360.82	10	26.31	029274132781	10029274132788
8400P WH 18	18 in. Side-Mount Slide	100-lbs.	White	18 in.	1/2 in.	1 in.	2	2.98	404.22	10	29.85	029274132798	10029274132795
8400P WH 20	20 in. Side-Mount Slide	100-lbs.	White	20 in.	1/2 in.	1 in.	2	3.38	447.61	10	33.38	029274132804	10029274132801
8400P WH 22	22 in. Side-Mount Slide	100-lbs.	White	22 in.	1/2 in.	1 in.	2	3.69	491.01	10	36.92	029274132811	10029274132818
8400P WH 24	24 in. Side-Mount Slide	100-lbs.	White	24 in.	1/2 in.	1 in.	2	4.04	534.40	10	40.45	029274132828	10029274132825
• 8403P	Rear Mounting Bracket	N/A	Zinc	-	-	-	2	0.21	123.74	10	4.04	029274345303	10029274345300
8450FMP													
8450FMP 12	12 in. Side-Mount Slide	100-lbs.	Anochrome	12 in.	1/2 in.	1 in.	2	2.06	274.0	10	20.63	029274316334	10029274316331
8450FMP 14	14 in. Side-Mount Slide	100-lbs.	Anochrome	14 in.	1/2 in.	1 in.	2	2.41	274.5	10	24.01	029274316341	10029274316348
• 8450FMP 16	16 in. Side-Mount Slide	100-lbs.	Anochrome	16 in.	1/2 in.	1 in.	2	2.76	360.0	10	27.57	029274316358	10029274316355
• 8450FMP 18	18 in. Side-Mount Slide	100-lbs.	Anochrome	18 in.	1/2 in.	1 in.	2	3.10	404.0	10	31.05	029274316365	10029274316362
• 8450FMP 20	20 in. Side-Mount Slide	100-lbs.	Anochrome	20 in.	1/2 in.	1 in.	2	3.45	447.2	10	34.52	029274316372	10029274316379
• 8450FMP 22	22 in. Side-Mount Slide	100-lbs.	Anochrome	22 in.	1/2 in.	1 in.	2	3.80	491.8	10	38.00	029274316389	10029274316386
8450FMP 24	24 in. Side-Mount Slide	100-lbs.	Anochrome	24 in.	1/2 in.	1 in.	2	4.15	534.1	10	41.47	029274316396	10029274316393
8450FMP 26	26 in. Side-Mount Slide	100-lbs.	Anochrome	26 in.	1/2 in.	1 in.	2	4.49	577.3	10	44.95	029274316402	10029274316409
8450FMP 28	28 in. Side-Mount Slide	100-lbs.	Anochrome	28 in.	1/2 in.	1 in.	2	4.55	621.2	10	45.20	029274315658	10029274315655
• 8403P	Rear Mounting Bracket	N/A	Zinc	-	-	-	2	0.21	123.74	10	4.04	029274345303	10029274345300
TT100													
TT100P 250	250mm Side-Mount Slide	100-lbs.	Zinc	250mm	12.7mm	45mm	2	1.57	274.04	10	15.70	029274345150	10029274345157
TT100P 300	300mm Side-Mount Slide	100-lbs.	Zinc	300mm	12.7mm	45mm	2	1.92	274.04	10	19.24	029274345167	10029274345164
TT100P 350	350mm Side-Mount Slide	100-lbs.	Zinc	350mm	12.7mm	45mm	2	2.27	317.43	10	22.77	029274345174	10029274345171
• TT100P 400	400mm Side-Mount Slide	100-lbs.	Zinc	400mm	12.7mm	45mm	2	2.63	360.82	10	26.31	029274345181	10029274345188
• TT100P 450	450mm Side-Mount Slide	100-lbs.	Zinc	450mm	12.7mm	45mm	2	2.98	404.22	10	29.85	029274345198	10029274345195
• TT100P 500	500mm Side-Mount Slide	100-lbs.	Zinc	500mm	12.7mm	45mm	2	3.38	447.61	10	33.38	029274345204	10029274345201
• TT100P 550	550mm Side-Mount Slide	100-lbs.	Zinc	550mm	12.7mm	45mm	2	3.69	491.01	10	36.92	029274345211	10029274345218
• TT100P 600	600mm Side-Mount Slide	100-lbs.	Zinc	600mm	12.7mm	45mm	2	4.04	534.40	10	40.45	029274345228	10029274345225
TT100P 650	650mm Side-Mount Slide	100-lbs.	Zinc	650mm	12.7mm	45mm	2	4.39	577.80	10	43.99	029274345235	10029274345232
TT100P 700	700mm Side-Mount Slide	100-lbs.	Zinc	700mm	12.7mm	45mm	2	4.75	621.19	10	47.53	029274345259	10029274345256
• TT401P	Rear Mounting Bracket	N/A	Zinc	-	-	-	2	0.20	123.74	10	2.02	029274345266	10029274345263

• Recommended Stocking SKUs



Drawer Slide Quick Reference Matrix

Knap & Vogt® strives to provide our customers with products that effectively satisfy all project requirements. The Quick Reference Matrix below provides a retail snapshot of Knap & Vogt's drawer slide portfolio, making it easy to search for the features you are looking for in a drawer slide solution.

	Mounting Style	Load Class	Slide Type		Extension		Disconnect Type			Open/Close Features		
			Roller Bearing	Ball Bearing	3/4 Extension	Full Extension	Friction Release	Lever Release	Lift Out	Hold In/ Anti-Rebound	Self-Close	Soft Close
1129	Under	35 lbs.		•	•		•					
1175	Under	50 lbs.	•		•				•			
1260	Side	60 lbs.	•		•			•		•		
1284	Side	75 lbs.	•		•				•	•		
1300	Side	75 lbs.	•		•			•				
1805	Side	75 lbs.	•		•				•	•	•	
8400	Side	100 lbs.		•		•		•		•		
8450FM	Side	100 lbs.		•		•		•		•	•	•
TT100	Side	100 lbs.		•		•		•		•		

Planograms

Note: Planograms are shown for demonstration purposes only. Please see your sales representative to have a planogram customized to fit your needs.



KNAPE & VOGT
 2700 Oak Industrial Dr. NE
 Grand Rapids, MI 49505-6026 USA
 1.800.253.1561 | 616.459.3311
 Fax: 877.636.3290
www.kv.com

This and other KV literature is available for download at www.kv.com > Resource Library

Knap & Vogt reserves the right to change product specifications at any time without notice and without incurring responsibility for existing units.
 ©2015 Knap & Vogt. KV and the KV logo are trademarks of Knap & Vogt.

OL2322/1015