



A STORIED HISTORY
WITH AN EVEN BRIGHTER FUTURE

SINCE 1937

NATIONWIDE FAMILY-OWNED MANUFACTURER
OF KITCHEN & BATH CABINETRY



COMING
SOON
2019

dWhite
BY KITCHEN KOMPACT



Our recessed panel, Shaker style cabinets will soon be available in painted white. This painted wood door style enables a variety of design options with countertops, flooring and decorative backsplashes. Door pulls not included.



Loyalty @kitchenkompact

Our employees average 15 years of service!



KITCHEN KOMPACT

kitchenkompact.com



GLENWOOD



For those who want a darker, chocolate color and up-to-date Shaker style, choose our best selling line, **Glenwood**. The clean, well-defined edges and ***recessed panel*** doors bring a touch of elegance to your home. Door pulls not included.



Location @kitchencompact

We are located in Jeffersonville, Indiana, across the Ohio River from Louisville, Kentucky.



kitchencompact.com



WARMWOOD



Not as dark as Glenwood, **Warmwood's** chestnut brownish tone, clean lines and ***recessed panel*** doors give you another choice in our most popular Shaker style. Door pulls not included.



American-Made @kitchencompact

Our cabinets are proudly made in the USA!



kitchencompact.com



CHADWOOD



A traditional classic with a golden oak finish, **Chadwood** is right at home in any kitchen. With its *oak recessed panel* doors, **Chadwood** can be designed and accessorized to fit any need, taste or budget. Door pulls not included.



Family @kitchencompact

Founded by Dwight Gahm, we are now joined by a third generation!



kitchencompact.com

The Enduring Beauty of Wood

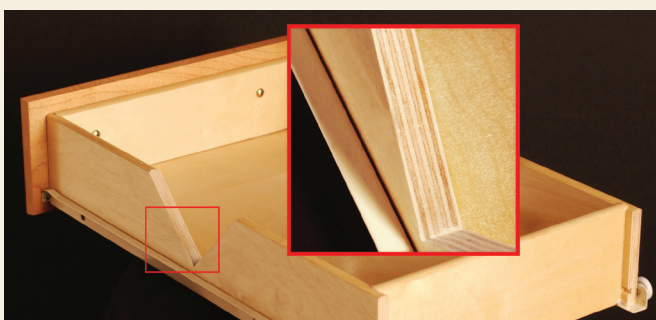


There's solid wood durability built into every KK cabinet. From the oak, maple or beech on the doors to the solid pine corner blocks on the base cabinets, each cabinet is built to last. Note these quality features:

- All frames are built of solid 3/4" hardwoods. Each rail is kiln-dried, joined by mortise and tenon, and then glued for added strength.
- Solid wood toe kicks, 3/4" thick.
- Solid wood hanging strips on wall and base cabinets, located at the top and bottom.
- End panels consist of 3-ply construction, 1/2" thick engineered wood core with hardwood veneers.

All cabinets get stained and sealed and are protected with a durable topcoat. The result is a surface that is virtually "family-proof," resisting many household chemicals, water, alcoholic beverages, mild acids and even nail polish.

The result is more than just a kitchen you can cook in—it's a kitchen you can live in at a price you can live with.



And there's more. All Kitchen Compact cabinets feature plywood drawers as a standard. A front-to-back epoxy-coated drawer system is securely attached to a solid wood strip in the back of the cabinet for stability, and years of smooth operation. We also offer universal design cabinets.

Kitchen Compact, Inc. reserves the right to change design, specifications or materials without being obliged to incorporate such changes in products of prior manufacture. The artwork and specifications contained herein are the property of Kitchen Compact, Inc. and may not be copied or reproduced without the written consent of the company.

A physical sample must be viewed for actual color of cabinetry.

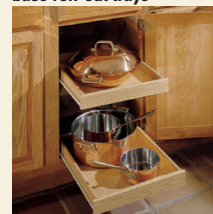
Custom Touches

These accessories, available for KK cabinets, give any kitchen a custom look. Ask your dealer for details.

pantry roll-out trays



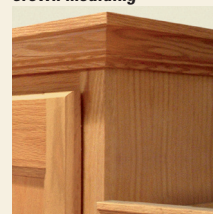
base roll-out trays



Accessory Match stem glass holder



crown moulding



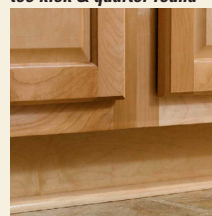
Accessory Match lattice wine rack



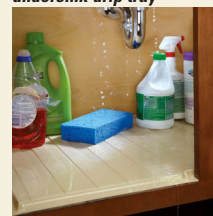
Accessory Match desk organizer



toe kick & quarter round



Rev-A-Shelf undersink drip tray



Rev-A-Shelf half moon shelf



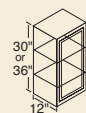
Rev-A-Shelf pull-out filler



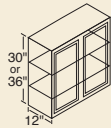
For more photos and information, visit us online!

accessorymatch.com
(260) 495-2501
cabinet-mart.com
(417) 799-0297

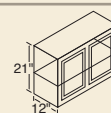
rev-a-shelf.com
(800) 626-1126

WALL Cabinets

36" High

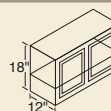
12WT*	27WT
15WT*	30WT
18WT*	33WT
21WT*	36WT
24WT*	


30" High

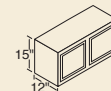
9W*	27W
12W*	30W
15W*	33W
18W*	36W
21W*	42W
24W*	48W


21" High

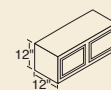
24R*	36R
30R	42R


18" High

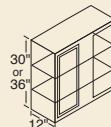
24Y*	36Y
30Y	42Y


15" High

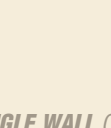
30X	36X
33X	39X


12" High

30X12
36X12

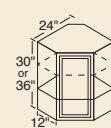
WALL CORNER Cabinets

36" High

24WCT*	36WCT*
--------	--------

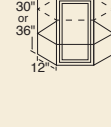

30" High

24WC*	42WC
36WC*	48WC
39WC	

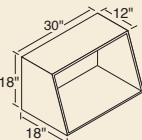
All can be pulled 4-1/2".

ANGLE WALL Cabinets

36" High

24AT

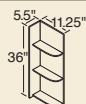

30" High

24A

MICROWAVE Cabinet


30MW

For proper height, install under a 30X cabinet.

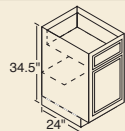
WALL WHATNOT Cabinet

36" High

WWN

Trim to desired height and width.

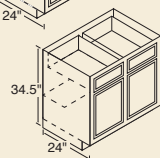
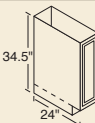
BASE WHATNOT Cabinet


BWN

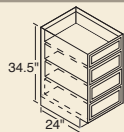
BASE Cabinets


12B*	30B
15B*	33B†
18B*	36B
21B*	42B
24B*	48B
27B*	

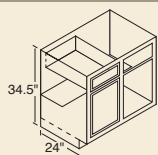
† 3" side stiles.


TRAY Cabinet


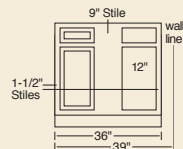
9T

DRAWER Cabinets


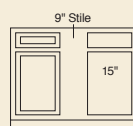
15D	24D
18D	

BASE CORNER Cabinets


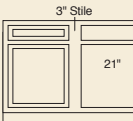
39BC	48BC
42BC	



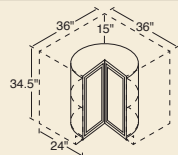
39BC
Must be pulled 3".
Can be pulled to 46".



42BC
Can be pulled to 49".

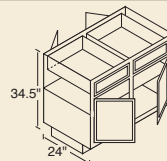


48BC
Can be pulled to 49".

LAZY SUSAN CORNER Cabinet


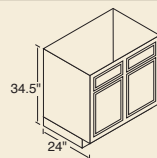
36LS

Shipped without finished ends.

PENINSULA BASE Cabinets


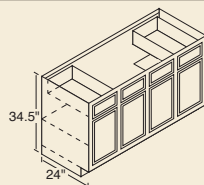
36B-P
48B-P
48BC-P

BC-P indicates Blind Corner Peninsula.

RANGE & SINK BASE Cabinets


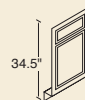
30RBS	36RBS
33RBS†	42RBS

† 3" side stiles.

SINK BASE Cabinets


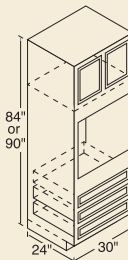
60SB	72SB
------	------

No shelf under sink – no back.

SINK FRONTS


18SF†

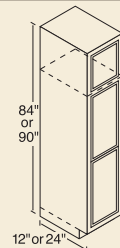
† Square edge.

OVEN Cabinets

90" High

30OUT

84" High

30OU

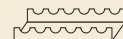
BROOM Cabinets

90" High

18BRWT (12" deep)
18BRBT (24" deep)
24BRBT (24" deep)

84" High

18BRW (12" deep)
18BRB (24" deep)
24BRB (24" deep)

No shelves included with broom cabinets.
Optional Shelf Kit available.

ACCESSORIES


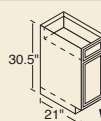
Wine Rack (kit)



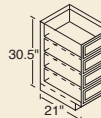
Appliance Garage
To fit beneath 24A.



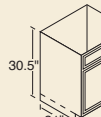
Pantry/Base Roll-Out Tray
15BT 18BT 24BT

VANITY Cabinets
30.5" Standard


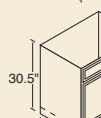
V12B



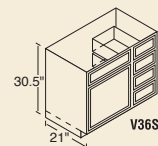
V15D



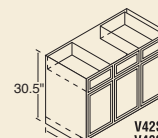
V24S



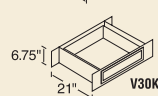
V30S



V36SD



V42S
V48S



V30KH

VANITY Cabinets
34.5" Tall

Tall vanities are only available for Glenwood and Warmwood.

V12BT	V36SDT
V15DT	V42ST†
V24ST	V48ST†
V30ST	

All Standard and Tall Vanities 21" Deep

† Two outside working drawers.

ADA ACCESSIBLE Cabinets

ADA accessible cabinets are available, on special order, in a limited number of sizes.

Cabinet Code Descriptions

For ease of ordering, the numerical designation indicates the cabinet width, the letter identifies the height.

* Single door.



Kitchen Kompact, Inc.
911 East 11th St. (47130)
P.O. Box 868
Jeffersonville, IN 47131-0868
(812) 282-6681 Phone
(812) 282-7880 Fax

kitchenkompact.com



Kitchen Kompact is certified under the Kitchen Cabinet Manufacturers Association's Environmental Stewardship Program™.

™ This certification has been recognized by the National Association of Home Builders' (NAHB) with the Green Building Award for Advocate of the Year for its environmental and sustainability achievements.



Kitchen Kompact, Inc.
911 East 11th St. (47130)
P.O. Box 868
Jeffersonville, IN 47131-0868
(812) 282-6681 Phone
(812) 282-7880 Fax

kitchenkompact.com



Kitchen Kompact is certified under
the Kitchen Cabinet Manufacturers
Association's Environmental
Stewardship Program**.

** This certification has been recognized by the
National Association of Home Builders' (NAHB)
with the Green Building Award for Advocate of the Year
for its environmental and sustainability achievements.