

COVERS UP TO **15,000** SQ. FT.



REMEMBER TO "FEED YOUR LAWN"



Jonathan Green
QUALITY LAWNS SINCE 1881

LOVE YOUR SOIL®

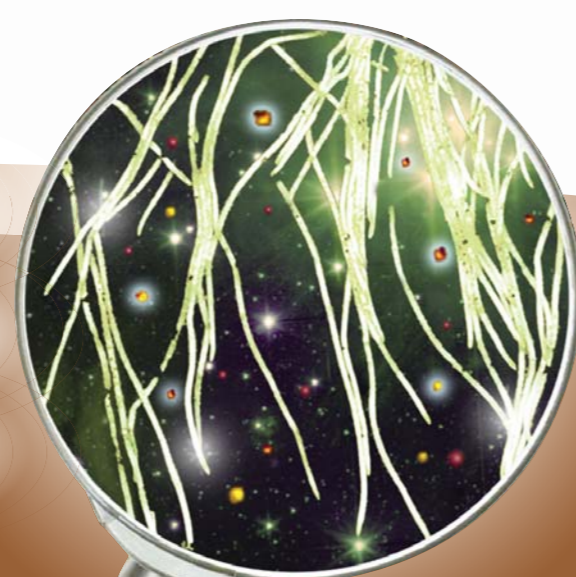
Natural Soil Food for Lawns in Hard Soils

HELPS LOOSEN SOIL FOR DEEPER ROOT GROWTH

FORTIFIED WITH CALCIUM, SULFUR & IRON

IDEAL FOR VEGETABLE GARDENS

REVITALIZES SOIL BY IMPROVING AIR & WATER FLOW



54 LBS. NET WEIGHT (24.49 Kg)
Contains ~ 75 cups

THE NEW AMERICAN LAWN FEED YOUR LAWN ...AND YOUR SOIL!



EARLY SPRING:
Apply Green-Up plus Crabgrass Preventer and MAG-I-CAL on the same day.

LATE SPRING:
Apply Green-Up Weed & Feed.

SUMMER:
Apply Love Your Soil to feed the soil.

FALL:
Apply Winter Survival to feed the lawn.

OPTIONAL APPLICATION:
If insects are a problem, apply Summer Survival Lawn Food & Insect Control anytime from June through August.

FEEDING YOUR SOIL

If you've struggled to grow a great lawn in the past, poor soil that is hard and compacted is often the problem. LOVE YOUR SOIL assists in breaking up clay and compacted soils, which improves root penetration, promotes growth and root mass while helping release trapped nutrients in the soil.

DIRECTIONS FOR USE
ESTABLISHED LAWNS:
LOVE YOUR SOIL can be applied anytime of the year. We recommend using it with our "New American Lawn" Program (left).
Apply one bag of LOVE YOUR SOIL per 15,000 sq. ft. using the "Spreader Settings" chart below. For best results, aerate or rake the lawn vigorously prior to applying LOVE YOUR SOIL. Watering is not necessary, but if possible, water in after application for 15-30 minutes. For very hard soil, repeat applications twice a year may be necessary.

NEW LAWNS OR OVERSEEDING LAWNS OR SODDING:
When seeding or sodding lawns, LOVE YOUR SOIL should be applied with Jonathan Green MAG-I-CAL and Green-Up Lawn Food for Seeding & Sodding. These products can be applied in any order, on the same day.
Apply one bag of LOVE YOUR SOIL per 7,500 square feet using the "Spreader Settings" chart below. For best results, aerate or rake the lawn vigorously prior to applying LOVE YOUR SOIL, grass seed or any of the Jonathan Green products mentioned above. Watering is not necessary, but if possible, water in after application for 15-30 minutes.

Ask for a **FREE** copy of our **New American Lawn Guide** or go to www.newamericanlawn.com

TOMATOES & VEGETABLES:
Mix 1 cup per 10 square feet of garden area when preparing soil for planting. For established plants, apply 1/2 cup around plant base and water in.

TREES, ROSES & SHRUBS:
Spread 1 cup per inch of caliper around plant base and water in. Mix 1 cup per inch of caliper into the backfill soil when planting new trees and shrubs.

HANGING BASKETS:
Apply 1/2 cup per hanging basket and water in.
Do not spread by hand; wear gloves or use a spreader.

SPREADER SETTINGS

The following settings are approximate. An accurate calculation can be made by application to 1,000 sq. ft. and adjusting spreader opening to apply 3.6 lbs. per 1,000 sq. ft. Settings are based on an average walking speed. Reduce setting for slower speed; raise setting for higher speed. Check your spreader on 250 square feet and adjust to apply at the rate of .90 pounds per 250 square feet. Sweep (do not wash) all fertilizer materials from surfaces immediately after application, because certain fertilizer ingredients can cause permanent stains. Wash out spreader after each use and allow it to dry thoroughly. Treat any exposed metal spreader areas with oil to reduce corrosion.

BROADCAST (ROTARY) SPREADERS		DROP SPREADERS	
Established lawns 15,000 sq. ft.	Seeding or Sodding 7,500 sq. ft.	Established lawns 15,000 sq. ft.	Seeding or Sodding 7,500 sq. ft.
Jonathan Green New American Lawn	4-1/2	Agri-Fab	2
New American Lawn Deluxe & Pro	15	Central	4
New American Lawn Hand Held	3	EZ Republic (Ortho)	4
Agri-Fab Cyclone	2-1/2	Earthway (Ames)	10
EZ Republic (Ortho)	4	Precision (Red Devil)	3-1/2
Earthway (Ames)	12	Scotts Rotary	8
Precision (Red Devil)	5	Scotts EasyGreen	20
Scotts Rotary	4		
Scotts EasyGreen	20		

USAGE TIPS

For rectangular lawns
Apply two header strips across each end for a turning area. Then apply back and forth in the longest direction.

For irregular-shaped lawns
Apply a header strip around the entire lawn for a turning area, then apply back and forth.

Note: Each pass should be within 5 feet of each other to ensure an overlap.

- Do not leave spreader open when making turns.
- For best results, do not apply on a windy day.
- Swath will vary due to weather conditions, product used and walking speed.
- To determine how much coverage you need, multiply the length of your lawn by its width. This equals your total square footage. Deduct any non-lawn areas (house, gardens, walkways, etc.). One bag covers up to 15,000 sq. ft.

If your spreader is not listed here, or if you bought a Jonathan Green spreader prior to 2017, please visit www.jonathangreen.com for the correct setting.

GUARANTEED ANALYSIS

Calcium (Ca)	21.0%
Sulfur (S)	3.8%
3.8% Combined Sulfur (S)	
Iron (Fe)	1.0%
0.01% Water Soluble Iron (Fe)	

Derived from: Calcium Sulfate Dihydrate, Calcium Carbonate, Iron Humate and Molasses.

Information regarding the content and level of iron in this product is available on the internet at <http://www.epa.gov/iron04>

CAUTION
Store in a cool dry place out of the reach of children and pets. Do not apply near water, storm drains, or drainage ditches. Do not apply if heavy rain is expected. Apply this product only to your lawn or garden and sweep any product that lands on the driveway, sidewalk or street back onto your lawn or garden. Also, sweep fertilizer off concrete surfaces to avoid staining.

NOTICE
Seller makes no warranty, expressed or implied, concerning the use of this product other than indicated on the label. Buyer assumes all risk of use and/or handling if such use is contrary to label instructions.

CAS NO.

Calcium Carbonate	72608-12-9
Calcium Sulfate Dihydrate	10101-41-4
Iron Humate	N/A
Molasses	N/A



My Pledge Of Satisfaction
We have made every effort in the formulation of this product to insure that you will be satisfied with the results. If, for any reason, you are not satisfied, please write and describe the problem. Our lawn specialists will make every effort to assure your success.

Sign up to receive timely lawn tips www.jonathangreen.com

Be aware of local ordinance requirements concerning lawn fertilizer applications. "Black out" dates may limit or prohibit lawn fertilizer applications from late fall to early spring in certain areas.

Distributed & Guaranteed by: Jonathan Green, Inc. POB 326 Farmingdale, NJ 07727