

Works for Jandorf Lamp Cords:

- #60133 – SPT-2 Silver
- #60134 – SPT-1 White
- #60135 – SPT-1 Brown
- #60136 – SPT-1 Gold

What's Inside

1 – 8' Lamp Cord (18 Gauge) with Polarized Plug (M)

What's Its Purpose

Provides electrical current in a lamp.

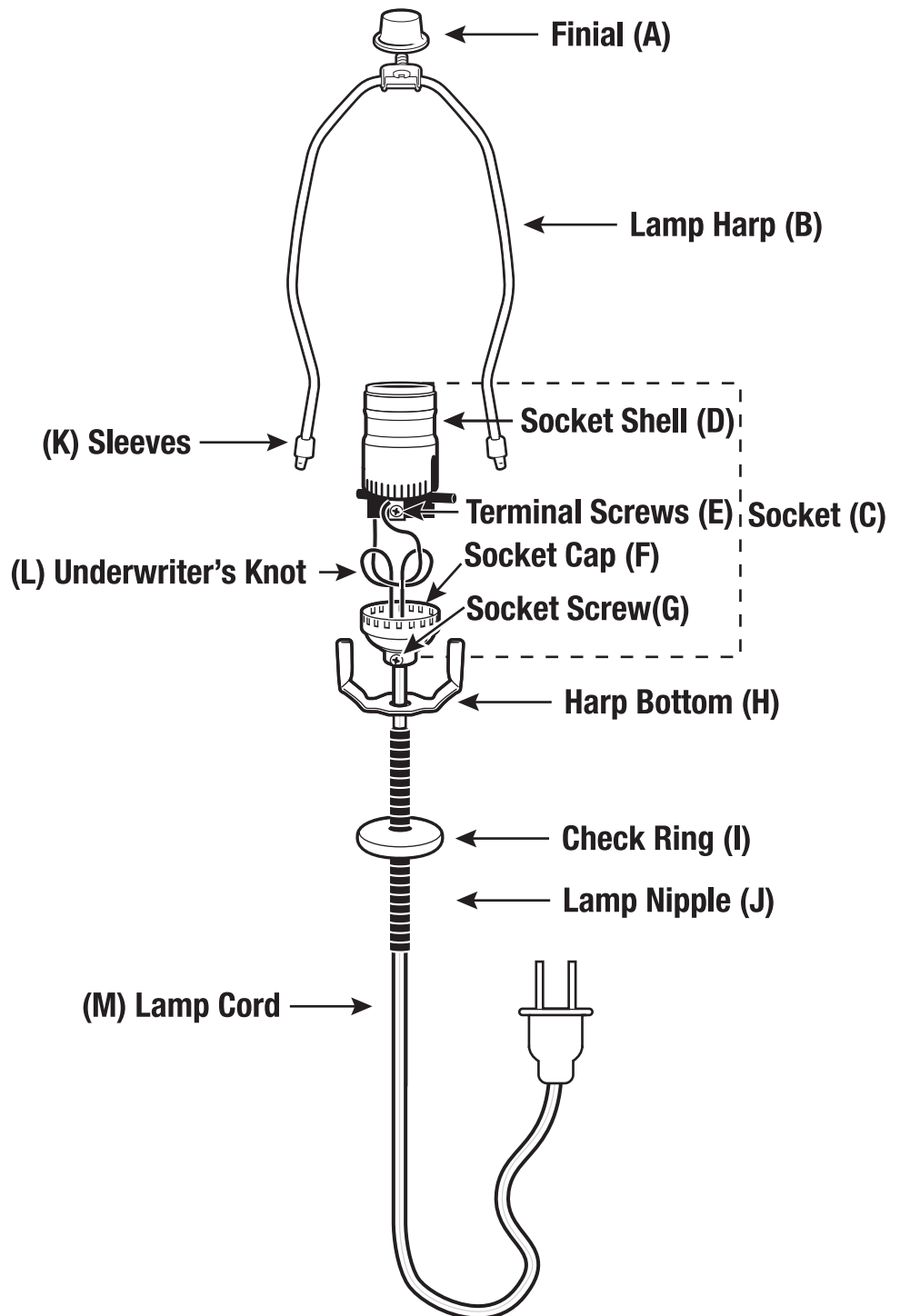
What's Needed

Screwdriver
 Wire Stripper

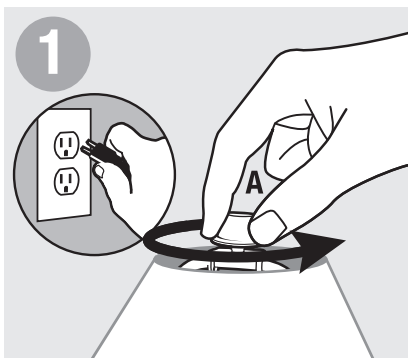
Warning

- Before beginning **TURN OFF POWER** by unplugging lamp from wall outlet.
- Follow local electrical regulations or codes when installing and using this product.
- Deviation from the assembly instructions may result in a **risk of fire or electric shock**.
- Do not plug cord in electrical outlet until all necessary terminals on the appliance have been completed and the product is completely reassembled.

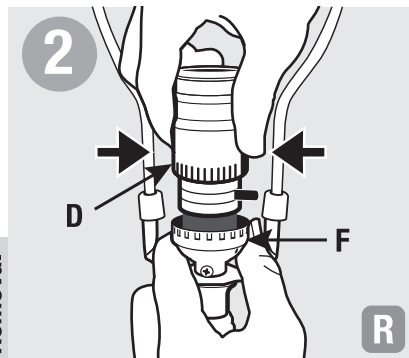
Project Overview



LAMP Cord

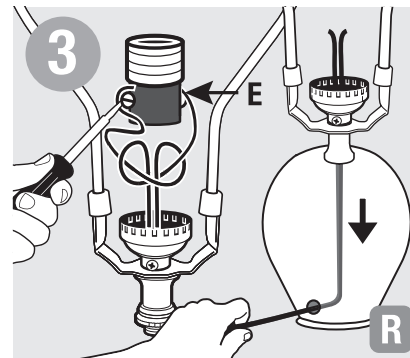


Before beginning **TURN OFF POWER** by unplugging lamp from wall outlet. Unscrew finial (A), remove lamp shade and bulb.

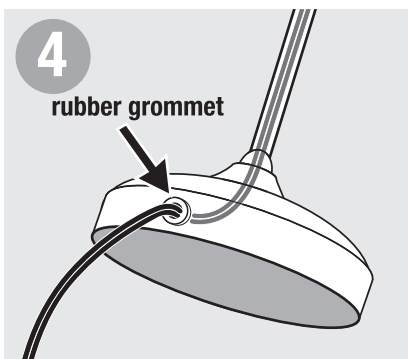


Removal

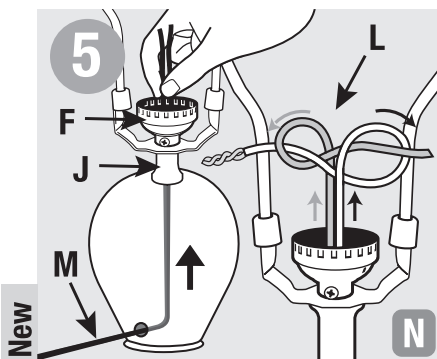
Press sides of socket shell (D); rock shell back and forth and lift up to remove from socket cap (F).



Unscrew terminal screws (E) to release wires. Pull old cord through bottom or side of fixture to remove.

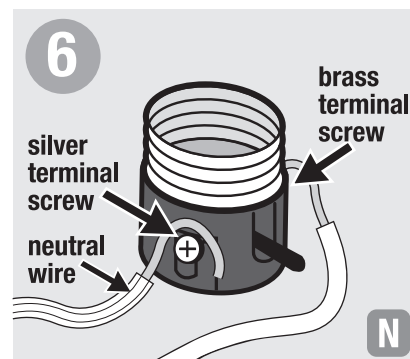


If feeding through metal lamp base, make sure rubber grommet is in place. Replace if needed.

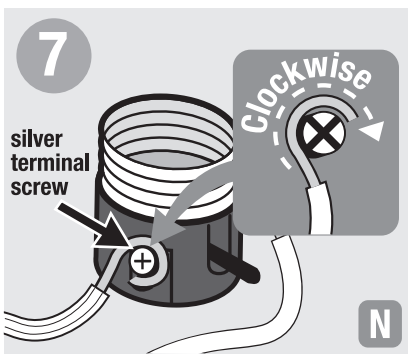


New

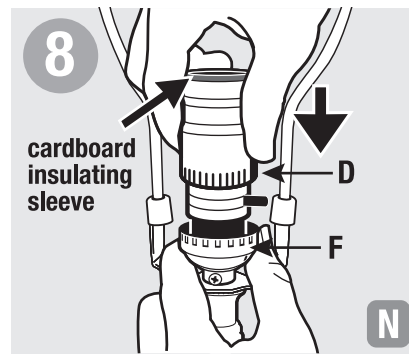
Feed cord (M) through bottom or side of lamp, up through nipple (J) and out socket cap (F). Cardboard insulating disc should be firmly in bottom of socket cap. Tie an Underwriter's knot (L).



On the socket, connect ribbed neutral wire (feel outside of cord for ribbing) around silver terminal screw and smooth wire around brass terminal screw.



Wrap each wire clockwise 3/4 turn under head of terminal screw and tighten screws. Cut loose strands.



Make sure cardboard lining is firmly in place in socket shell (D). Place socket shell on cap (F). Pull extra wire back through lamp. Snap socket shell into socket cap by gently rocking side to side, until shell snaps into place with clicking sound.

R symbol represents removal of hardware **N** symbol represents new hardware