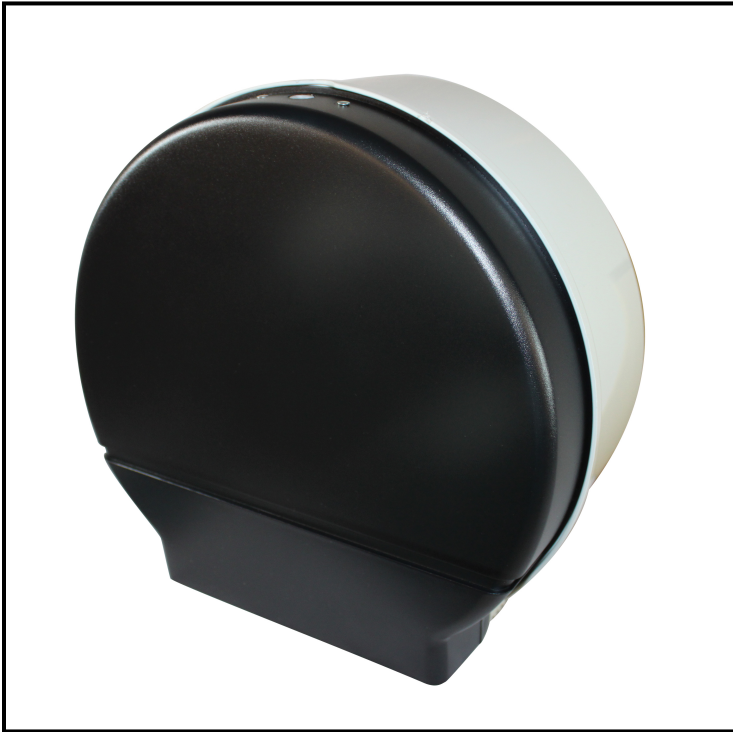


ClearVu® 9" Jr. Jumbo Toilet Tissue Dispenser, Single, Smoke 2539



Dispenses all universal brands of 9" tissue with cores from 2 1/4" - 3 3/8"

Features

- Double latch key lock
- Durable plastic construction
- Replacement parts available: Key #4090K, Key Knob - #4090KK

Item	Description	Color/Scent	Size	Private Labeling	Case Weight	Case Cube	Packaging
2539	Smoke	Smoke	11" L X 11" W X 5 1/2" H	Yes	14.91 lb	2.97	6/cs