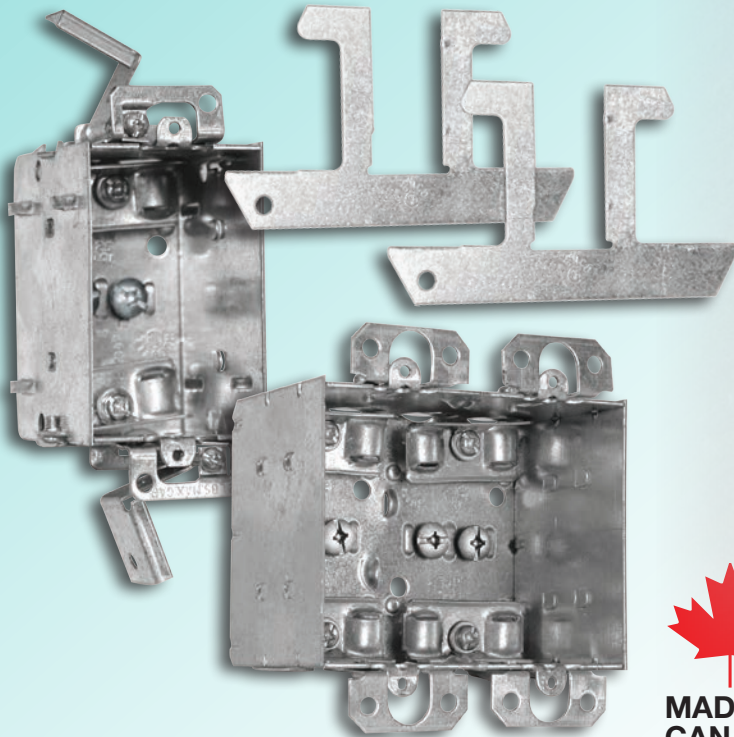
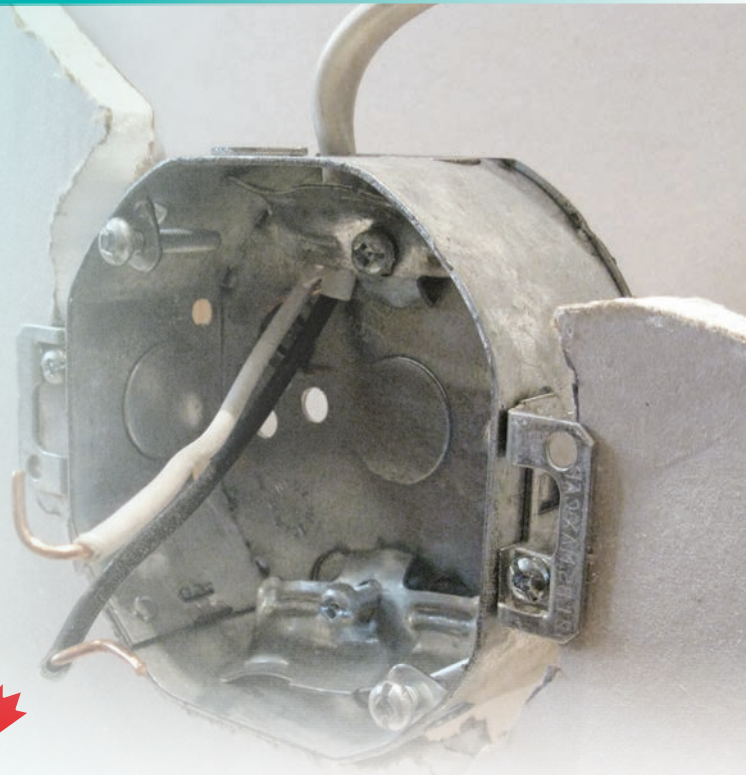


Rework Series



**MADE IN
CANADA**



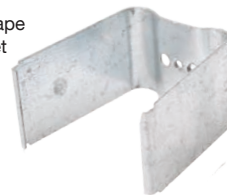
Looking to add power, a switch, or a fixture to an already finished room? Hubbell's **tradeSELECT™** line of rework metallic boxes allow you to mount your devices where you want them and without having to depend on whether a stud is present. With the broadest range of rework box options - Hubbell has the solution to meet your electrical rework applications.

FEATURES & BENEFITS

1104LRWUBAR - 2½" deep 12.5 cu. in.

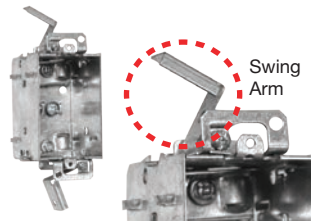
- 'U' shape bracket is slightly bent at both ends to avoid the bracket from cutting into the drywall
- Retracted bracket grips back of the drywall in one quick step
- The captive screw allows the universal cable clamp to be raised simultaneously providing a fast and easy installation

'U' Shape
Bracket



1104LUDBAR - 2½" deep 12.5 cu. in.

- Box easily tightens against the drywall with 2 screws for a quick installation
- A tracer of the box outline is provided to draw on the wall and facilitate cutting directions
- Swing arm for a secure grip on the drywall



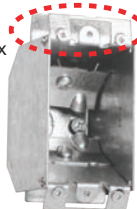
Swing
Arm



EZ101BAR - 2½" deep 12 cu. in.

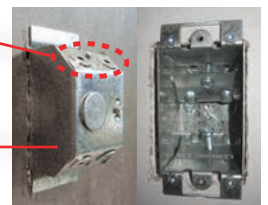
- Smooth flat external sides for a simple and easy installation
- Retracted pivoting ends allow easy insertion in the cut area on the drywall for a quick installation
- No additional box supports are required

Brackets
tighten box
against
drywall



Retracted
pivoting ends

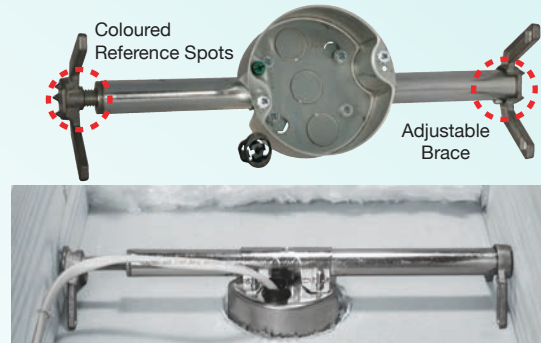
Smooth
external sides



FEATURES & BENEFITS

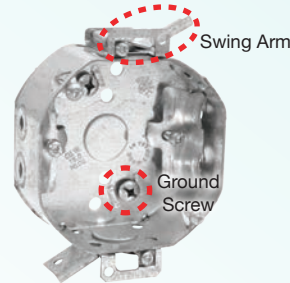
936C - REWORK CEILING BRACE & BOX KIT

- Ideal for heavy lighting fixtures and ceiling paddle fans
- Max. load of 50 kg. (110 lbs.) for fixture support and 32 kg. (70 lbs.) for ceiling fan
- RETRO-BRACE® is adjustable for joist spacing from 16" to 24"
- 2 coloured spots on threaded rod provide quick reference for common 16" and 24" centers
- RETRO-BRACE® has simple "tool free" expansion of brace
- RETRO-BRACE® has preset support brackets
- Easy to install, up-front ground screw



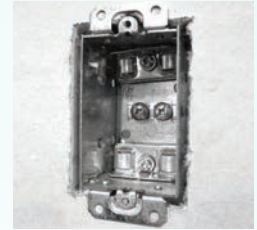
54151LDBAR OCTAGON BOX - 1½" deep 15 cu. in.

- Octagonal box for light fixture into existing wall or ceiling
- For non-metallic cable
- Box easily tightens against the drywall with 2 screws for a quick installation
- Swing arms for a secure grip on the drywall
- Raised ground screw backed-out for easier and quicker ground wire installation
- 12 welding points holding bottom plate that exceed CSA norms by 3 times



1102LREU - 2" deep 10 cu. in.

- Low profile for shallow installation 2" deep
- Plaster ears ideal for rework applications
- Great solution for limited space behind the drywall
- The captive screw allows the universal cable clamp to be raised simultaneously providing a fast and easy installation



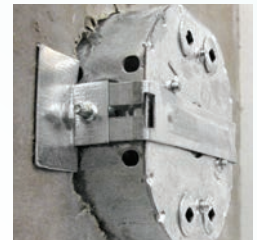
820D - REWORK ACCESSORIES

- Device box supports, also known as 'F' clips
- Used to install a device box with ears into an existing wall
- 2 legs of equal length provides a quicker and easier positioning
- Use KIT201 - contains one pair of 820D supports and device box 2104LU (2½" deep, 12.5 cu. in.) for easy rework installation



7901RW - REWORK BRACKET

- For fixtures weighing 4 kg. (10 lbs.) or less, the 7901RW is an ideal way to retrofit octagon boxes
- 7901RW works to suspend octagon boxes while minimizing the size of the cut out required to fit the box through the drywall opening
- An error proof design results in easier installation and less potential patching of drywall



SBEXBAR - DEVICE BOX EXTENSION

- To extend the depth of an existing device box
- Adjustable depth up to 7/8"
- Mounting screws included for a complete and fast installation
- Fits any 2" x 3" device box



MADE IN CANADA



FABRIQUÉ AU CANADA

Visit our website for the complete tradeSELECT™ offering.



tradeSELECT™

www.hubbellonline.com/wiring

HUBBELL
Hubbell Canada LP

