

Rapid Ship Product Guide

*Enjoy the Benefits of Same Day Shipping
on popular models!*



Program Terms

- Only items listed as “Rapid Ship” will qualify for Rapid Ship terms.
- Any requests for modifications or variations (factory installed options, cords, ballast change, etc.) of Rapid Ship listed items will not qualify for Rapid Ship. A standard lead time will apply.
- All items will ship FOB or factory
- Any order that does not meet customer’s freight prepaid minimum will be subject to freight charges.
- Orders will ship standard ground. Next day and two day expedited shipping services are available for additional charge.
- Customers on credit hold will cannot be guaranteed order processing or release.
- If order includes non-rapid ship items, and you require full order shipment, then Howard Lighting cannot guarantee same day shipping.
- Model nomenclature must be complete at time order is placed to be guaranteed Rapid Ship service.
- Minimum order of \$1,000 required to qualify for prepaid freight.
- Terms and conditions apply

Table of Contents

LED Highbays	4-6	Fluorescent Strip Retrofit Kit	15
LED Strips	6	Fluorescent Strip	16
LED Shoplight	6	Florescent Wraps	16
LED Retrofit Strips	7	Fluorescent Shoplight	16
LED Panels	7	Vaporproof Highbay	17
LED Center Baskets	7	Vaporproof Strip	17
LED Covered Strips	7	HID Canopy	17
LED Vaporproof	8	HID Highbay	17
LED Wallpacks	9	HID Flood	18
LED Garage Lighter	10	HID Wallpack	18
LED Floods	10	HID Sports Lighter	18
LED Canopy	10	Long Life Photocontrols	19
LED Work Lights	11	Exit/Emergency	19
LED Dusk-to-Dawn	11	Linear Fluorescent Ballast	20
LED Area Lighter	11	Compact Fluorescent Ballast	20
LED Flood Light	12	HID Ballast	21
LED Street and Area Light	12	LED T8 Lamp	22
LED Night OWL/NEMA Head	13	LED Retrofit Lamps	23-24
Solar Powered LED Utility Street Light	13	Linear Fluorescent Lamps	25
LED Utility Flood	13	HID Lamps	26-27
Fluorescent Highbay	14-15		

..... **Lighting for life**

Terms and Conditions of Sales

1. General

- a. All orders are subject to acceptance by Howard Industries, Inc. – Lighting Products Division (hereinafter “Howard Lighting”).
- b. Specifications are subject to change without notice. Contact Howard Lighting for verification.
- c. Howard Lighting assumes no responsibility for the improper selection, installation, use, and/or maintenance of its products.
- d. The terms and conditions set forth herein are in lieu of any and all other terms and conditions expressed or implied including the warranties of merchantability and fitness for a particular purpose. In no case shall Howard Lighting or Howard Industries, Inc. be obligated or liable for any indirect, consequential, or incidental damages for breach of these or any other terms and conditions expressed or implied whatsoever.

2. Terms

- a. Purchaser understands that payments due per terms on page one of this document.
- b. Purchaser understands an interest charge of 1.5% per month will be added on any past due balances.

3. Pricing

Unless noted otherwise in writing by Howard Lighting:

- a. All pricing and quotes are based on US dollars.
- b. Pricing is subject to change without notice.
- c. The applicable taxes will be added to invoices.
- d. Written quotes will be honored for thirty (30) calendar days given all fixtures are released for shipment within sixty (60) calendar days from the quote date.
- e. Shipments requested after a quote expires may be subject to a price increase.
 - i. Exceptions may be made when specific ship dates are noted on the original quote.
 - ii. Pricing is subject to change if any accessory, option, or other condition is changed from the original quote.

4. Minimum Billing

Howard Lighting’s minimum billing amount is \$100 (US).

5. Freight Allowance

- a. Howard Lighting provides a freight allowance for orders totaling \$1000 (US) net given the full order is being shipped via normal freight to the same address in any of the contiguous 48 states in the US. Additional freight charges will be added as applicable to shipments to Alaska, Hawaii, and outside the US. For oversize products and those subject to damage that require special shipping, the minimum freight allowance is \$1000 (US) net. These model families include:
ELFL (Extral Large Floods)
SL (Sports Lighter)
HAX (Highbay HID)
IHAX (Inline Highbay HID)
LAX (Low Bay HID)
ILAX (Inline Lowbay HID)
VSA8 (8’ Vaporproof Fluorescent Strip)
FSA8 (8’ Fluorescent Strip)
FSB8 (8’ Fluorescent Strip)
HFC7 (8’ Highbay Fluorescent)
HFE7 (8’ Highbay Fluorescent)
USC3 (Utility Small Cobrahead)
URL (Utility Roadway LED)
- b. Partial shipments and shipments made to more than one location that include any of the model numbers noted in Section 5a, regardless of quantity, will be subject to a \$100 freight charge. Partial shipments and shipments made to more than one location that do not include a model noted in Section 5a will be subject to standard freight policy. Partial shipments and shipments made to more than one location must each total \$1000 (US) net to earn a freight allowance. Howard Lighting may make partial shipments at its own discretion, billing each shipment as it is made, but with freight terms applicable to the complete order.

- c. Orders of less than \$1000 (US) net that include one of the models noted in Section 5a will be shipped as directed by the purchaser either freight collect or prepaid with a \$100 freight charge being added to the invoice. Any orders less than \$1000 (US) net and not including any models in Section 5a will have the standard freight policy applied.
- d. For air or premium freight requests on orders over \$1000 (US) net, Howard Lighting will add the air or premium freight charges less the normally-incurred freight charges to the invoice.
- e. Unless noted otherwise in writing by Howard Lighting, all published prices and quotes are F.O.B. shipping point.
- f. To qualify for this freight allowance, Howard Lighting reserves the right to select the shipment’s point of origin, method of transportation, and routing. Pre-paid freight allowance only applies to orders shipped within the continental United States.

6. Freight Claims

Purchaser understands and agrees to report claims for damage, shortage, or errors in material as follows:

- a. Claims for damage and/or shortage caused by shipping must be made by the consignee to the carrier within ten (10) calendar days of delivery.
 - i. All items in question must be kept in their original cartons and at the original delivery point for inspection by carrier (upon request).
 - ii. If notified, Howard Lighting will assist purchaser as possible with claim.
- b. Claims involving shortages or errors in material believed to be caused by Howard Lighting will not be considered unless noted on the delivery receipt and reported to Howard Lighting within ten (10) calendar days of delivery.

7. Returned Goods Policy

- a. Howard Lighting will not accept any returned products without prior written authorization from Howard Lighting.
- b. Return request must be made to Howard Lighting within 90 days of original shipment.
- c. Purchaser agrees to prepay all transportation charges on all returned products.
- d. Credit will be issued at the prices in effect at the time of shipment or at the time of the return – whichever is lower – provided the products are in a saleable condition, are current models, and are listed in the published price sheet in effect at the time of the return.
- e. Purchaser understands that all non-stock, special, custom, or modified versions of normal factory-stock items are not returnable.
- f. If Howard Lighting accepts the returned merchandise and credits the purchaser’s account, the purchaser agrees to pay a minimum restocking fee of 25% plus the original freight cost. These amounts will be deducted from the credit to cover the cost of handling and inspection.
- g. Howard Lighting will not issue account credits when the value of the items to be returned is less than \$50 (US).
- h. Returns from any one-job order will be limited to no more than 10% of the original job order’s value.
- i. Orders for stocked products may be cancelled without any cancellation charges provided Howard Lighting receives a written cancellation request prior to shipment.
- j. Order cancellations for custom products are subject to cancellation charges based on the costs incurred and commitments made by Howard Lighting up to and including the date the written cancellation notification was received.
- k. Returned product must be in unopened original factory cartons, in re-saleable condition, non-obsolete product, and have been shipped or sold directly by Howard Lighting Products.

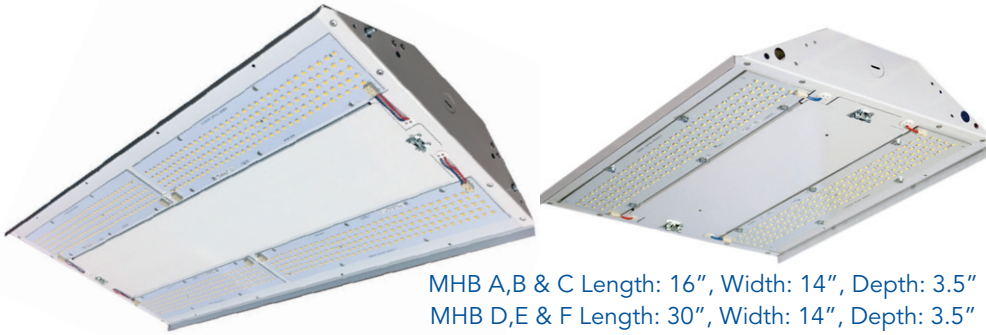
8. Hold For Release Orders

Orders received as “hold for release” or “will advise” are not processed for manufacture until a written release is received and the order has been priced.

9. Claims

Refunds, repairs, or replacement will be at the sole discretion of Howard Lighting. Reimbursement for any field labor and/or service charges must be pre approved in writing by Howard Lighting. Refer to our product warranty for more information.

LED Mini Highbays - Value and Performance - You Deserve Both.



MHB A,B & C Length: 16", Width: 14", Depth: 3.5"
MHB D,E & F Length: 30", Width: 14", Depth: 3.5"

Applications

Warehouse Cafeteria Gymnasium
Manufacturing Facility Auditorium

Description

MHB series highbay fixture offers quality lighting for wide ranging applications and delivers excellent energy savings compared to fluorescent and HID fixtures. This fixture series is available in multiple lumen outputs and is configurable with various options to meet your needs.

Benefits

- Designed for optimal thermal performance and long LED life
- Energy saving compared to HID systems and fluorescent systems
- Exceptional color rendering
- High system efficacy up to 166 Lm/W
- System Designed, Manufactured, Tested, and Approved by Howard Industries in Mendenhall, Mississippi
- Compliant with safety and performance standards

Dimensions: Length: 16", Width: 14", Depth: 3.5"

Available Options

- Clear and Frosted Lens
- Wireguard
- Choose Option -M for Title 24 compliance in California
- Factory Installed Cord/Cordset

WE RECOMMEND

MHB-A-5K-0MV
95W; 15,850 Lumens
5000K CCT
Standard Disconnect

*Foreign and domestic components.

Features

- Full body construction (white finish)
- Long life LEDs
- LEDs available in 4000K and 5000K with CRI>80
- Over 70% lumen maintenance at 100,000 hours
- Suitable for ambient temperature up to 55°C (131°F) for MHBA models. Temperature rating is configuration dependent and detail is provided under performance table on specification sheet.
- Power Factor (PF) >0.9
- Total Harmonic Distortion (THD) ≤ 20%
- Driver standard with 0 – 10V dimming
- Inbuilt surge protection - 6.5kV for MHBA & MHBC, and 2.5kV for MHBB models
- Ideally suited for suspension mounting with optional wire cable hanging kit or chain and V-clips
- Access plate on back of the fixture for quick and easy wiring
- Warranty: 5 years



Proudly
Designed & Assembled
IN THE USA*



Designed for 1 person installation

• Specifications are subject to change without notice.

LED Mini Highbays - Value and Performance - You Deserve Both.

UPC	Model #	Description
08649	MHBA5K0MV	16"x14" Highbay, 15,500 Lumens, 95W, 5000K, No Lens, 120-277V
08758	MHBB5K0MV	16"x14" Highbay, 22,500 Lumens, 150W, 5000K, No Lens, 120-277V
08650	MHBC5K0MV	16"x14" Highbay, 29,500 Lumens, 195W, 5000K, No Lens, 120-277V
09035	MHBE5K0MV	30"x14" Highbay, 46,000 Lumens, 320W, 5000K, No Lens, 120-277V
08952	MHBF5K0MV	30"x14" Highbay, 56,500 Lumens, 385W, 5000K, No Lens, 120-277V
Options and Adders (Consult Factory for Model Numbers with Adders)		
08720	MHB-WG	Wire Guard (Frame not included) (A,B,C series products)
08969	MHB2-WG	Wire Guard (Frame not included) (D,E,F, series products)
08451	HF-WCH3	Wire Cable Hanging Kit (2pcs; 5 foot long)
ADDER	HF-OSHB-HBP112L7	A: 120-277V Occupancy Sensor
ADDER	MHB-EB	B: Emergency Battery Backup (Factory Option only)
ADDER	MHB-CLF	C: Clear Acrylic Lens w/Steel Frame and Hinge
ADDER	MHB2-CLF	C: Clear Acrylic Lens w/Steel Frame and Hinge (D,E,F series products)
ADDER	Dimming Occ. Sensor	D: Dimming Occupancy Sensor
ADDER	MHB-FLF	F: Frosted Acrylic Lens w/Steel Frame and Hinge
ADDER	MHB2-FLF	F: Frosted Acrylic Lens w/Steel Frame and Hinge (D,E,F series products)
ADDER	MHB-WGF	G: Wire Guard with Steel Lens Frame and Hinge
ADDER	MHB2-WGF	G: Wire Guard with Steel Lens Frame and Hinge (D,E,F series products)
ADDER	Pendant Mount Box	J: Steel Pendant Mount J-Box (Factory Option only)
ADDER	Microwave Sensor	M: Occupancy Sensor (Factory Installed only)
ADDER	Adj. Output Unit	U: Adjustable Output Unit (Factory Installed only)
ADDER	480V Step Down	AX: 480V Step Down Transformer (Factory Option only)
ADDER	480V Step Down	AX: 480V Step Down Transformer - E&F Models
ADDER	HLP-OS-FSIR-1--	Remote programmer
ADDER		1: Cord, 6', no plug
ADDER		2: Cord, 10', no plug
ADDER		3: Cord, 6' twist lock 120V
ADDER		5: Cord, 6' non-twist lock 120V
ADDER		7: Cord, 6' twist lock 277V
ADDER		8: Cord, 10' twist plug
ADDER		9: Cord, 6' non-twist 277V

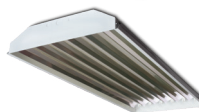
• Specifications are subject to change without notice.

LED UFO Highbay



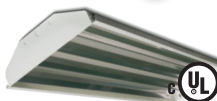
UPC	Model #	Description
09112	LUHB50AMV	100W, 13,000 Lumens, 5000K, 120-277V
09111	LUHB50BMV	150W, 19,500 Lumens, 5000K, 120-277V
09110	LUHB50CMV	200W, 26,000 Lumens, 5000K, 120-277V
09109	LUBH50DHV	300W, 40,500 Lumens, 5000K, 277-480V
09114	LUHB-ALR-60	60° Aluminum Reflector (20pcs/ctn)
09121	LUHB-ALR-60LM	60° Aluminum Reflector (20pcs/ctn)
09113	LUHB-ALR-90	90° Aluminum Reflector (20pcs/ctn)
09115	LUHB-PCR-70	70° Polycarbonate Reflector (10pcs/ctn)

Highbay Linear LED-Ready *(lamps sold separately)*



UPC	Model #	Description
09024	HFA1A6LT8	HFA1 Flat Profile Body 86% Reflector, 6 Lamps F32T8/8xx/LED/16W/AC compatible (type B)

Highbay Linear with LED Lamps



UPC	Model #	Description
08587	HFA2E416FLEDMV	95% Reflector, 4 LED Lamps (16W/2200 Lm per lamp), 5000K, 120-277V

LED-Ready Strips *(lamps sold separately)*



UPC	Model #	Description
09019	FSA402LT8	4 Foot FSA4 Body, 2 Lamps, F32T8/8xx/LED/16W/AC compatible (type B)
09020	FSA804LT8	8 Foot FSA8 Body, 4 Lamps, F32T8/8xx/LED/16W/AC compatible (type B)

LED Shoplight



UPC	Model #	Description
09170	LSL42340MV	4 Foot, 1-Lamp F32T8/LED 4000K, 2,400 Lumens, 23W, 120-27V
09108	LSL44040MV	4 Foot, 2-Lamp F32T8/LED 4000K, 2,400 Lumens, 23W, 120-27V

• Specifications are subject to change without notice.

8' Fluorescent Strip Channel - LED Retrofit Kit



UPC	Model #	Description
90148	FSR84416F	8 Foot, 4.25" Wide, 4-Lamp (2 4' Retrofit Covers) Type-B LED Lamps (16 Watt/2,200 Lumens per lamp) 5000K



LED-Ready Strip Retrofit (lamps sold separately)



UPC	Model #	Description
09022	FSR84-2LT8	8 Foot FSR4 Body (x2), 2 Lamps, F32T8/8xx/LED/16W/AC compatible (type B)
09023	FSR84-4LT8	8 Foot FSR4 Body (x2), 4 Lamps, F32T8/8xx/LED/16W/AC compatible (type B)

LED Flat Panels



UPC	Model #	Description
8956	LFP2240AMV	2'x2', 39W, Ultra-thin Edge Lit LED Panel, 4,920 Lumens, 4000K Shipped in packages of 4 per box.
08957	LFP2440AMV	2'x4', 48W, Ultra-thin Edge Lit LED Panel, 6,050 Lumens, 4000K Shipped in packages of 2 per box.



LED Center Baskets



UPC	Model #	Description
09128	LCB222540-MV	2'x2', 25W, 3,400 Lumens, 4000K
09130	LCB242540-MV	2'x4', 25W, 3,500 Lumens, 4000K
09129	LCB243440-MV	2'x4', 34W, 4,590 Lumens, 4000K



LED Covered Strips



UPC	Model #	Description
08725	LCS2FT-2050MV	2', 20W, LED Covered Strip, 2,600 Lumens, 5000K
08731	LCS4FT-3250MV	4', 32W, LED Covered Strip, 4,224 Lumens, 5000K
08734	LCS8FT-6550MV	8', 65W, LED Covered Strip, 8,850 Lumens, 5000K



• Specifications are subject to change without notice.

Vaportight LED Strip Fixtures



UPC	Model #	Description
09125	EVSL44040MV	40W, 4000K, 5,200 Lumens, 120-277V
09126	EVSL46540MV	65W, 4000K, 8,450 Lumens, 120-277V
09127	EVSL46550MV	65W, 5000K, 8,500 Lumens, 120-277V

Vaporproof LED Strip Fixtures




Proudly
Designed & Assembled
IN THE USA*

UPC	Model #	Description
08588	VSB4216D	4 Foot, Impact Resistant Frosted Acrylic Lens, 2-Lamp 16W T8 Type-B LED (F32T8/840/LED/16W/AC) lamps installed, Multivolt 120-277V

Vaporproof LED Strip Fixtures




Proudly
Designed & Assembled
IN THE USA*



UPC	Model #	Description
09143	VSL4F05540U	4 Foot, Impact Resistant Frosted Acrylic Lens, 55 Watts, 7,700 Lumens 4000K Color, 120-277v

• Specifications are subject to change without notice.

Mini LED Wallpack - Polycarbonate Lens



UPC	Model #	Description
08470	MINILWPP20-MV	Wallpack, 20W, 1,205 Lumens, 5000K, 120-277V

Medium LED Wallpack



UPC	Model #	Description
08431	MWP-5028R-LED-MV	5000K 22W (2,360 Lumens) LED Multi-volt
08432	MWP-5040R-LED-MV	5000K 41W (4,660 Lumens) LED Multi-volt
08433	MWP-5055R-LED-MV	5000K 47W (5,490 Lumens) LED Multi-volt

LED Medium Cutoff Wallpack



UPC	Model #	Description
08110	MCWP-5040R-LED-MV	5000K 40W (4,201 Lumens) LED Multi-volt

Large LED Wallpack



UPC	Model #	Description
08382	LWP-5075-LED-MV	Large Wallpack 5000K 83W (9,400 Lumens) LED Multi-volt
08381	LWP-5090-LED-MV	Large Wallpack 5000K 97W (12,000 Lumens) LED Multi-volt

LED Versalite Wallpacks



UPC	Model #	Description
08736	VL125	12W, 5000K, 120-277V
08738	VL305	30W, 5000K, 120-277V
08740	VL505	50W, 5000K, 120-277V
08836	VL805	80W, 5000K, 120-277V
08837	VL1205	120W, 5000K, 120-277V

• Specifications are subject to change without notice.

LED Garage Lighter



UPC	Model #	Description
08751	GL-A-40K-MV-W-S	41W, 5240Lm, 4000K, 120-277VAC, White Housing, Integral Dimming Occupancy Sensor
08752	GL-B-40K-MV-W-S	62W, 7670Lm, 4000K, 120-277VAC, White Housing, Integral Dimming Occupancy Sensor

LED Floods



UPC	Model #	Description
08653	FLL8	Small Flood, 8W, 900 Lumens, 4100K, 120-277V, Bronze Housing
08654	FLL8-W	Small Flood, 8W, 900 Lumens, 4100K, 120-277V, White Housing
08135	FLL15-W	Small Flood, 15W, 4100K, 120-277V
08655	FLL23	Small Flood, 23W, 2,540 Lumens, 4100K, 120-277V, Bronze Housing
08656	FLL23-W	Small Flood, 23W, 2,540 Lumens, 4100K, 120-277V, White Housing
08657	FLL32	Small Flood, 32W, 3,700 Lumens, 4100K, 120-277V, Bronze Housing
08658	FLL32-W	Small Flood, 32W, 3,700 Lumens, 4100K, 120-277V, White Housing

LED Flood Light (ideal for flagpole lighting)



UPC	Model #	Description
08667	BLED-B-4	44 watts, 4000K, w/1/2" NPT Swivel Arm
08668	BLED-D-4	75 watts, 4000K, w/1/2" NPT Swivel Arm
08669	BLED-D-4-SF	75 watts, 4000K, w/2" Slip Fitter

Small LED Flood



UPC	Model #	Description
08171	SLF-40-40-MV	Small Flood, 46W, 4,520 Lumens, 4000K, 120-277v

LED Canopy



UPC	Model #	Description
08632	LSCT45DMV	Small Canopy, 44 Watts, 4,948 Lumens, 5000K color, 120-277V
08633	LMCT95DMV	Medium Canopy, 80 Watts, 9,548 Lumens, 5000K color, 120-277V
08254	LCN4050MV	LED Canopy, 40 Input Watts, 5000K color, 120-277v



• Specifications are subject to change without notice.

LED Work Lights



UPC	Model #	Description
08364	LWL-TP-22-120	Single Head, 22W, 1800 Lumens, 5000K, 120V 60Hz
09083	LWL-TP-72-120	Twin Head, 2x36W, 5000K, 120V 60Hz

LED Dusk-to-Dawn Utility



UPC	Model #	Description
08098	DTDU35LED41MV	35W, 3,000 Lumens, 4100K Color, 120-277v
08168	DTDU48LED41MV	48W, 4,500 Lumens, 4100K Color, 120-277v

LED Dusk-to-Dawn



UPC	Model #	Description
08247	DTDC-30HO-LED-120	30W LED High Output 120V
08248	DTDC-30HO-LED-120-A	30W LED High Output 120V with Arm

LED Area Lighter



UPC	Model #	Description
08412	XAL-5080-LED-MV	5000K, 80W, 9,600 Lumens, Type III, 120-277V

LED Area Lighter



UPC	Model #	Description
09162	XALE-4100-MV-T3-T	4000K, 97W, 13,475 Lumens, 120-277V, Type 3
09093	XALE-4150-MV-T3-T	4000K, 150W, 20,680 Lumens, 120-277V, Type 3
09051	XALE-4150-HV-T3-M	4000K, 155W, 21,618 Lumens, 277-480, Type 4
09163	XALE-4230-MV-T3-I	4000K, 227W, 31,312 Lumens, 120-277V, Type 3
09050	XALE-4300-HV-T3-M	4000K, 302W, 41,902 Lumens, 277-480V, Type 3
09208	XALE-4300-MV-T3-I	4000K, 293W, 40,718 Lumens, 120-277V, Type 3
09131	XALE-4300-MV-T4-I	4000K, 293W, 40,718 Lumens, 120-277V, Type 4
09049	XALE-5100-MV-T3-T	5000K, 97W, 13,475 Lumens, 120-277V, Type 3
09139	XALE-5150-MV-T4-T-WH	5000K, 150W, 20,680 Lumens, 120-277V, Type 4, White housing
09140	XALE-5150-MV-T4-T-BK	5000K, 150W, 20,680 Lumens, 120-277V, Type 4, Black housing
09046	XALE-5230-MV-T3-I	5000K, 227W, 31,312 Lumens, 120-277V, Type 3
09048	XALE-5300-MV-T3-I	5000K, 293W, 40,718 Lumens, 120-277V, Type 3

• Specifications are subject to change without notice.

LED Floodlight



Visit www.designlights.org for the Qualified Products List



UPC	Model #	Description
08659	XFL-5080-LED-MV-TR	5000K, 80W, 8,200 Lumens, NEMA 7x7, 120-277V, Trunnion Mount

LED Flood Light



UPC	Model #	Description
09164	XFLE-4100-MV-TR-F1-T	4000K, 97W, 14,279 Lumens, 120-277V, Trunnion, NEMA 7Hx6V
09165	XFLE-4150-MV-TR-F1-T	4000K, 150W, 20,680 Lumens, 120-277V, Trunnion, NEMA 7Hx6V
09166	XFLE-4230-MV-TR-F1-I	4000K, 227W, 31,312 Lumens, 120-277V, Trunnion, NEMA 7Hx6V
09167	XFLE-4300-MV-TR-F1-I	4000K, 293W, 40,718 Lumens, 120-277V, Trunnion, NEMA 7Hx6V
09168	XFLE-4300-HV-TR-F1-M	4000K, 302W, 41,902 Lumens, 277-480V, Trunnion, NEMA 7Hx6V
09045	XFLE-5100-MV-TR-F1-T	5000K, 97W, 13,494 Lumens, 120-277V, Trunnion, NEMA 7Hx6V
09043	XFLE-5150-MV-TR-F1-T	5000K, 150W, 20,680 Lumens, 120-277V, Trunnion, NEMA 7Hx6V
09042	XFLE-5230-MV-TR-F1-I	5000K, 227W, 31,312 Lumens, 120-277V, Trunnion, NEMA 7Hx6V
09063	XFLE-5230-HV-TR-F1-M	5000K, 227W, 31,312 Lumens, 277-480V, Trunnion, NEMA 7Hx6V
09044	XFLE-5300-MV-TR-F1-I	5000K, 293W, 40,718 Lumens, 120-277V, Trunnion, NEMA 7Hx6V
09064	XFLE-5300-HV-TR-F1-I	5000K, 293W, 40,718 Lumens, 277-480V, Trunnion, NEMA 7Hx6V

XAL, XFL, XALE, XFLE Accessories (Order and Sold Separately)

UPC	Model #	Description
08580	XFL-SF	Floodlight Slip Fitter
09039	XLE-ARM	Arm Mount
09037	XLE-SF	Slip Fitter up to 2-3/8" tenon
09038	XLE-TR	Trunnion (100/150/230W models)
09054	XLE-TRL	Trunnion Large (300W models)

LED Utility Flood



UPC	Model #	Description
08858	UFAMD73YB2R7NA	270W/30K lm, 120-27V w/0-10V Dimming, Type 7x6, 3000K, Large yoke w/external wiring, Bronze finish, 20kV/20kA Surge Protection, 7-Pin Photo Receptacle, No Control, w/ Adjustable Output Unit
08857	UFAMD74YB2R7NA	270W/30K lm, 120-27V w/0-10V Dimming, Type 7x6, 4000K, Large yoke w/external wiring, Bronze finish, 20kV/20kA Surge Protection, 7-Pin Photo Receptacle, No Control, w/ Adjustable Output Unit
08861	UF-SF	Slip Fitter

LED Utility Flood



UPC	Model #	Description
08402	ULF3HE550UBZ	High efficiency, NEMA 5 optics, 5000K color, 120-277V w/out photocontrol receptacle, bronze housing

• Specifications are subject to change without notice.

LED Street and Area Lighter



UPC	Model #	Description
08576	L401L25W40KT210GRM	25W, 4000K, Type II, EMV LED Driver, Gray Housing
08434	L401L40W40KT210GRM	40W, 4000K, Type II, EMV LED Driver, Gray Housing
08444	L401L40W40KT510GRM	40W, 4000K, Type V, EMV LED Driver, Gray Housing
08435	L401L65W40KT310GRM	65W, 4000K, Type III, EMV LED Driver, Gray Housing
08443	L401L65W40KT510GRM	65W, 4000K, Type V, EMV LED Driver, Gray Housing
08441	L402L80W40KT310GRM	80W, 4000K, Type III, EMV LED Driver, Gray Housing
08440	L402L100W40KT310GRM	100W, 4000K, Type III, EMV LED Driver, Gray Housing
08436	L403L120W40KT310GRM	120W, 4000K, Type III, EMV LED Driver, Gray Housing
08439	L403L180W40KT310GRM	180W, 4000K, Type III, EMV LED Driver, Gray Housing
08438	L404L150W40KT310GRM	150W, 4000K, Type III, EMV LED Driver, Gray Housing
08437	L404L240W40KT310GRM	240W, 4000K, Type III, EMV LED Driver, Gray Housing
08442	L404L240W40KT410GRM	240W, 4000K, Type IV, EMV LED Driver, Gray Housing

NIGHT OWL Security/NEMA Head Lighting



UPC	Model #	Description
08955	NO1AMV54U2P3L	50W, 5000 Lumens, 120-277V, Type V (no accessories), 4000K, Bare Aluminum, 20kV/20kA Surge Protection, 3-Pin NEMA Photoreceptable, Long-Life Photocontrol
08921	NO1BMV54U2P3L	70W, 7000 Lumens, 120-277V, Type V (no accessories), 4000K, Bare Aluminum, 20kV/20kA Surge Protection, 3-Pin NEMA Photoreceptable, Long-Life Photocontrol
08644	NO1-D	Optics
08636	NO1-DG	Optics with Glareshield

Solar Powered LED Utility Street Light



UPC	Model #	Description
08993	SLS0084SFG	1600 Lumens, 4000K, 8W, Slip Fitter, Gray Housing
08994	SLS0204SFG	4000 Lumens, 4000K, 20W, Slip Fitter, Gray Housing
08995	SLS0304SFG	6000 Lumens, 4000K, 30W, Slip Fitter, Gray Housing
	SLS008-BATT	Replacement battery kit for 8W SLS model
	SLS020-BATT	Replacement battery kit for 20W SLS model
	SLS030-BATT	Replacement battery kit for 30W SLS model
09170	SLS-TR	Trunnion
	SLS-SH	Square hoop
09169	SLS-RH	Round hoop
09132	SLS-RC	Remote Control

• Specifications are subject to change without notice.

Highbay Linear Fluorescent - Low Profile - 4 & 6 Lamp Lamps not Included



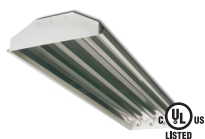
UPC	Model #	Description
07884	HFLPA654APSMV000000I	86% Reflector, 6L F54T5HO PRS MV Ballast
07229	HFLPE454APSMV000000I	95% Reflector, 4L F54T5HO PRS MV Ballast
07860	HFLPE654APSMV000000I	95% Reflector, 6L F54T5HO PRS MV Ballast

Highbay Linear Fluorescent - Flat Profile - 6 Lamp Lamps not Included



UPC	Model #	Description
02572	HFA1E654APSMV000000I	95% Reflector, 6L F54T5HO PRS MV Ballast
99848	HFA1A654APSMV000000I	86% Reflector, 6L F54T5HO PRS MV Ballast
02752	HFA1E632AHEMV000000I	95% Reflector, 6L F32T8 HBF MV HE Ballast
999757	HFA1E632ASEMV000000I	95% Reflector, 6L F32T8 SBF MV HE Ballast
99850	HFA1A632AHEMV000000I	86% Reflector, 6L F32T8 HBF MV HE Ballast

Highbay Linear Fluorescent - Flat Profile - 4 Lamp Lamps not Included



UPC	Model #	Description
02776	HFA2E454APSMV000000I	95% Reflector, 4L F54T5HO PRS MV Ballast
99854	HFA2A454APSMV000000I	86% Reflector, 4L F54T5HO PRS MV Ballast
02878	HFA2E432AHEMV000000I	95% Reflector, 6L F32T8 HBF MV HE Ballast

Highbay Linear Fluorescent - Curved Profile - 6 Lamp Lamps not Included



UPC	Model #	Description
02832	HFA3E654APSMV000000I	95% Reflector, 6L F54T5HO PRS MV Ballast
03959	HFA3A654APSMV000000I	86% Reflector, 6L F54T5HO PRS MV Ballast
02828	HFA3E632AHEMV000000I	95% Reflector, 6L F32T8 HBF MV HE Ballast
03961	HFA3A632AHEMV000000I	86% Reflector, 6L F32T8 HBF MV HE Ballast

Highbay Linear Fluorescent - Curved Profile - 4 Lamp Lamps not Included



UPC	Model #	Description
04367	HFB3E454APSMV000000I	95% Reflector, 4L F54T5HO PRS MV Ballast
04341	HFB3E432AHEMV000000I	95% Reflector, 6L F32T8 HBF MV HE Ballast

• Specifications are subject to change without notice.

Highbay Linear Fluorescent - Curved Profile - 6 Lamp - Lamps Included



UPC	Model #	Description
04339	HFA3E654IPSMV000000I	95% Reflector, 6L F54T5HO PRS MV Ballast F54T5/850/HO Lamps Installed
04202	HFA3E632NHEMV000000I	95% Reflector, 6L F32T8 HBF MV HE Ballast F32T8/850/HL/ECO/IC High Lumen Lamps Installed

Linear Fluorescent Retrofit Strips



UPC	Model #	Description
04567	FSR44232ASEMV000000I	4 Foot, 4.25" Wide, 2-Lamp F32T8 (2 4' Retrofit Covers) SBF MV HE Ballast (lamps not included)
04593	FSR84232ASEMV000000I	8 Foot, 4.25" Wide, 2-Lamp F32T8 (2 4' Retrofit Covers) SBF MV HE Ballast (lamps not included)
04581	FSR84454APSMV000000I	8 Foot, 4.25" Wide, 4-Lamp F54T5HO (2 4' Retrofit Covers) PRS MV Ballast (lamps not included)
05023	FSR84432AHEMV000000I	8 Foot, 4.25" Wide, 4-Lamp F32T8 (2 4' Retrofit Covers) HBF MV HE Ballast (lamps not included)
04582	FSR84432ASEMV000000I	8 Foot, 4.25" Wide, 4-Lamp F32T8 (2 4' Retrofit Covers) SBF MV HE Ballast (lamps not included)
04949	FSR84432ALEMV000000I	8 Foot, 4.25" Wide, 4-Lamp F32T8 (2 4' Retrofit Covers) LBF MV HE Ballast (lamps not included)
05041	FSR85432ASEMV000000I	8 Foot, 5" Wide, 4-Lamp F32T8 (2 4' Retrofit Covers) SBF MV HE Ballast (lamps not included)

• Specifications are subject to change without notice.

Linear Fluorescent Strips



UPC	Model #	Description
02897	FSA40232ASEMV000000I	4 Foot, 2-Lamp F32T8, Standard Ballast Factor Instant Start High Efficiency Multi-volt Ballast, Standard Disconnect Individual Packaging (lamps not included)
99839	FSA80432ASEMV000000I	8 Foot, 4-Lamp F32T8, Standard Ballast Factor Instant Start High Efficiency Multi-volt Ballast, Standard Disconnect Individual Packaging (lamps not included)

Linear Fluorescent Wraps



UPC	Model #	Description
07973	CW240232ASEMV	Commercial Grade, 4 Foot, 2-Lamp F32T8, Standard Ballast Factor Instant Start High Efficiency Multi-volt Ballast, Standard Disconnect Individual Packaging (lamps not included)
07974	CW440432ASEMV	Commercial Grade, 4 Foot, 4-Lamp F32T8, Standard Ballast Factor Instant Start High Efficiency Multi-volt Ballast, Standard Disconnect Individual Packaging (lamps not included)

Linear Fluorescent Wraps - Residential Grade



UPC	Model #	Description
01829	RW44	4 Foot, 4-Lamp F32T8, RES Instant Start 120V (lamps not included)
08066	RW54	5" Wide, 4 Foot, 4-Lamp F32T8, RES Instant Start 120V (lamps not included)

Linear Fluorescent Shoplight



UPC	Model #	Description
08083	FSL4B	Black Housing, 4 Foot, 2-Lamp F32T8, 120V (lamps not included)
08082	FSL4W	White Housing, 4 Foot, 2-Lamp F32T8, 120V (lamps not included)

• Specifications are subject to change without notice.

Vaporproof Linear Fluorescent Fixtures



UPC	Model #	Description
99715	VHA1A454APSMV000000I	Acrylic Impact Resistant Lens, 4-Lamp F54T5HO Program Rapid Standard Multi-volt Ballast, Standard Disconnect, Individual Packaging (lamps not included)
99746	VHA1A632AHEMV000000I	Acrylic Impact Resistant Lens, 6-Lamp F32T8 High Ballast Factor Instant Start High Efficiency Multi-volt Ballast, Standard Disconnect, Individual Packaging (lamps not included)
99716	VHA1A654APSMV000000I	Acrylic Impact Resistant Lens, 6-Lamp F54T5HO Program Rapid Standard Multi-volt Ballast, Standard Disconnect, Individual Packaging (lamps not included)



UPC	Model #	Description
99843	VSA4A232ASEMV000000I	4 Foot, Acrylic Impact Resistant Lens, 2-Lamp F32T8 Standard Ballast Factor High Efficiency Multi-volt Ballast, Standard Disconnect, Individual Packaging (lamps not included)
99748	VSA4A254APSMV000000I	4 Foot, Acrylic Impact Resistant Lens, 2-Lamp F54T5HO Program Rapid Start Multi-volt Ballast, Standard Disconnect, Individual Packaging (lamps not included)
04064	VSA8A432ASEMV000000I	8 Foot, Acrylic Impact Resistant Lens, 4-Lamp F32T8 Standard Ballast Factor High Efficiency Multi-volt Ballast, Standard Disconnect, Individual Packaging (lamps not included)
04025	VSA8A454APSMV000000I	8 Foot, Acrylic Impact Resistant Lens, 4-Lamp F54T5HO Program Rapid Start Multi-volt Ballast, Standard Disconnect, Individual Packaging (lamps not included)

HID Canopy



UPC	Model #	Description
02165	12X12CV-100-MH-4T	Large Canopy, 100 Watt Pulse Start, Quad Tap, Lamp Included
03837	12X12CV-150-PS-4T	Large Canopy, 150 Watt Pulse Start, Quad Tap, Lamp Included

HID Highbay - Aluminum Reflector - Open Bottom



UPC	Model #	Description
00329	HAL16O-400-PS-4T	16" Aluminum Highbay, 400 Watt Pulse Start, Quad Tap, Lamp Included

• Specifications are subject to change without notice.

HID Flood



UPC	Model #	Description
00095	SFL-100-MH-4T	Small Flood, 100 Watt Pulse Start, Quad Tap, Lamp Included
03826	MSWF-150-PS-4T	Mid Size Wide Flood, 150 Watt Pulse Start, Quad Tap, Lamp Included
08572	HFL-400-PS-5T-A	Horizontal Flood, 400 Watt Pulse Start, 5-Tap, Lamp Included
03588	LFL-250-PS-4T-A	Large Flood, 250 Watt Pulse Start, Quad Tap with Swivel Bracket, Lamp Incl.
03594	LFL-400-PS-5T-B	Large Flood, 400 Watt Pulse Start, 5-Tap with Slip Fitter, Lamp Incl.
05808	ELFL-750-PS-5T-A	Extra Large Flood, 750 Watt Pulse Start Metal Halide, 5-Tap with Swivel Bracket, Lamp Included
07377	ELFL-750-PS-5T-B	Extra Large Flood, 750 Watt Pulse Start Metal Halide, 5-Tap with Slip Fitter Mount, Lamp Included

HID Wallpack



UPC	Model #	Description
00275	MINIWP-70-MH-4T	Mini Wallpack, 70 Watt Pulse Start, Quad Tap, Lamp Included
00274	MINIWP-100-MH-4T	Mini Wallpack, 100 Watt Pulse Start, Quad Tap, Lamp Included
00668	MINIWPP-70-HPS-120	Mini Wallpack, 70 Watt High Pressure Sodium, 120 Volt, Lamp Included
01012	SWPG-100-MH-4T	Small Wallpack, 100 Watt Pulse Start, Quad Tap, Lamp Included
03814	MWP-150-PS-4T	Medium Wallpack, 150 Watt Pulse Start, Quad Tap, Lamp Included
03751	LDWP-250-PS-4T	Large Deep Wallpack, 250 Watt Pulse Start, Quad Tap, Lamp Included
00354	LDWP-400-PS-4T	Large Deep Wallpack, 400 Watt Pulse Start, Quad Tap, Lamp Included

HID Sports Lighter

Reflector/Lamp/Mounting Brackets sold separately



UPC	Model #	Description
08692	SLP-1500-MH-M4-C0	Sports Lighter Powerhead, 1500 Watt Metal Halide Aluminum Quad Tap (prewired 277V)

• Specifications are subject to change without notice.

Long-Life Photocontrol



UPC	Model #	Description
08520	HI-LL-127-15-BU-12	120-277V, 1.5fc, Blue, 12 Year Warranty
08521	HI-LL-127-15-BU-12F	120-277V, 1.5fc, Blue, 12 Year Warranty, Fail off
08522	HI-LL-127-15-GN-12	120-277V, 1.5fc, Green, 12 Year Warranty
08523	HI-LL-127-15-GN-12F	120-277V, 1.5fc, Green, 12 Year Warranty, Fail off
08974	HL-LL-127-15-BK-A	120-277V, 1.5fc, Black
08959	HL-LL-127-15-BK-AF	120-277V, 1.5fc, Black, Fail off
08976	HL-LL-127-15-BU-A	120-277V, 1.5fc, Blue
08975	HL-LL-127-15-BU-AF	120-277V, 1.5fc, Blue, Fail off
08978	HL-LL-127-15-GN-A	120-277V, 1.5fc, Green
08977	HL-LL-127-15-GN-AF	120-277V, 1.5fc, Green, Fail off

Exit Signs, Emergency Lights, & Combo Units



UPC	Model #	Description
05183	HL0301B2GW	LED Exit Sign, Battery Backup, Double Sided, Green Letters, White Housing
05181	HL0301B2RW	LED Exit Sign, Battery Backup, Double Sided, Red Letters, White Housing
07902	HL0202L-W	LED Emergency Light, White Housing, Adjustable Optics
07908	HL0223L-W	LED Emergency Light, White Housing, Adjustable Optics
07970	HL03143GW	LED Combo Unit, Green Letters, White Housing, Battery Backup with LED Lamp Heads
07909	HL03143RW	LED Combo Unit, Red Letters, White Housing, Battery Backup with LED Lamp Heads
07950	HL03143RWRC	LED Combo Unit, Red Letters, White Housing, Battery Backup with LED Lamp Heads Remote Capable
03557	HL04093GW	Combo Unit, Green Letters, White Housing, Battery Backup
03558	HL04093RW	Combo Unit, Red Letters, White Housing, Battery Backup

• Specifications are subject to change without notice.

Linear Fluorescent Ballast

Case Quantity = 10 ballasts

UPC	Model #	Description
T8 Electronic Ballasts		
CEE 04454	EP2/32IS/MV/MC/HE	2 Lamp F32T8 Standard Ballast Factor Instant Start High Efficiency Ballast, Multi-volt
CEE 04033	EP3/32IS/MV/MC/HE	3 Lamp F32T8 Standard Ballast Factor Instant Start High Efficiency Ballast, Multi-volt
CEE 04034	EP4/32IS/MV/MC/HE	4 lamp F32T8 Standard Ballast Factor Instant Start High Efficiency Ballast, Multi-volt
CEE 22143	EPL2/32IS/MV/MC/HE	2 Lamp F32T8 Low Ballast Factor Instant Start High Efficiency Ballast, Multi-volt
CEE 01469	EPL3/32IS/MV/SC/HE	3 Lamp F32T8 Low Ballast Factor Instant Start High Efficiency Ballast, Multi-volt
CEE 04665	EPH2/32IS/MV/MC/HE	2 Lamp F32T8 High Ballast Factor Instant Start High Efficiency Ballast, Multi-volt
CEE 04221	EPH3/32IS/MV/MC/HE	3 Lamp F32T8 High Ballast Factor Instant Start High Efficiency Ballast, Multi-volt
CEE 05296	EPH4/32IS/MV/SC/HE	4 Lamp F32T8 High Ballast Factor Instant Start High Efficiency Ballast, Multi-volt
CEE 05295	EP4/32PPRS/MV/SC/HE	4 Lamp F32T8 Standard Ballast Factor Parallel Program Rapid Start High Efficiency Ballast, Multi-volt
11112	EP2/59IS/MV/MC/HE	2 Lamp F96T8 Standard Ballast Factor, High Efficiency Multi-volt

Case Quantity = 20 ballasts

UPC	Model #	Description
T5 Electronic Ballasts		
11116	EP2/54HO/PRS/MV/W/MC	2 Lamp F54T5/HO Standard Ballast Factor Program Rapid Start Ballast, Multi-volt
08754	EP4/54HO/PRS/MV/L	4 Lamp F54T5/HO Standard Ballast Factor Program Rapid Start, Multi-volt

Case Quantity = 20 ballasts

UPC	Model #	Description
T12 Electronic Ballasts		
12409	EP2/40RS/MV/MC	2 Lamp F48T12 Standard Ballast Factor Rapid Start Ballast, Multi-volt
12410	EP2/110RS/MV/SC	2 Lamp F96T12/HO Standard Ballast Factor Rapid Start Ballast, Multi-volt
32403	EP2/75IS/MV/SC	2 Lamp F96T12 Standard Ballast Factor Rapid Start Ballast, Multi-volt



• Specifications are subject to change without notice.

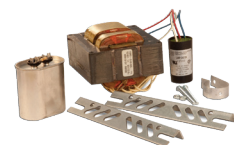
HID Ballast

Metal Halide Ballasts		
UPC	Model #	Description
06981	M-175-4T-CWA-K	MH Ballast, 175w, M57, Quad, CWA, Kit
03976	M-175-5T-CWA-K	MH Ballast, 175w, M57, 5-Tap, CWA, Kit
90109	M-250-4T-CWA-K	MH Ballast, 250w, M58, Quad, CWA, Kit
03977	M-250-5T-CWA-K	MH Ballast, 250w, M58, 5-Tap, CWA, Kit
06504	M-400-4T-CWA-K	MH Ballast, 400w, M59, Quad, CWA, Kit
99919	M-400-5T-CWA-K	MH Ballast, 400w, M59, 5-Tap, CWA, Kit
04091	M-1000-4T-CWA-K	MH Ballast, 1000w, M47, Quad, CWA, Kit
99948	M-1000-5T-CWA-K	MH Ballast, 1000w, M47, 5-Tap, CWA, Kit
07971	M-1500-4T-CWA-K	MH Ballast, 1500w, M48, Quad, CWA, Kit

Pulse Start Metal Halide Ballasts		
UPC	Model #	Description
99971	MP-70-4T-HXH-K	PSMH Ballast, 70w, M98, Quad, HX-HPF, Kit
06503	MP-100-4T-HXH-K	PSMH Ballast, 100w, M90, Quad, HX-HPF, Kit
05130	MP-150-4T-HXH-K	PSMH Ballast, 150w, M102, Quad, HX-HPF, Kit
06988	MP-250-4T-PSCWA-K	PSMH Ballast, 250w, M138/153, Quad, PS-CWA, Kit
08505	MP-320-5T-PSCWA-K	PSMH Ballast, 320w, M132/M154, 5-Tap, PS-CWA, Kit
08504	MP-400-5T-PSCWA-K	PSMH Ballast, 400w, M135/M155, 5-Tap, PS-CWA, Kit
99432	MP-750-5T-PSCWA-K	PSMH Ballast, 750w, M149, Quad, PS-CWA, Kit

High Pressure Sodium Ballasts		
UPC	Model #	Description
99883	S-35-120-RXH-K	HPS Ballast, 35w, S76, 120v, H-NPF, Kit
04177	S-50-120-RXH-K	HPS Ballast, 50w, S68, 120v, H-NPF, Kit
93135	S-70-120-RXH-K	HPS Ballast, 70w, S62, 120v, H-NPF, Kit
93169	S-70-4T-HXH-K	HPS Ballast, 70w, S62, Quad, HX-HPF, Kit
93137	S-100-120-RXH-K	HPS Ballast, 70w, S54, 120v, R-HPF, Kit
07051	S-100-4T-HXH-K	HPS Ballast, 100w, S54, Quad, HX-HPF, Kit
90002	S-150-120-RXH-K	HPS Ballast, 150w, S55, 120v, R-HPF, Kit
06502	S-150-4T-HXH-K	HPS Ballast, 150w, S55, Quad, HX-HPF, Kit
99411	S-250-4T-CWA-K	HPS Ballast, 250w, S50, Quad, CWA, Kit
99925	S-250-5T-CWA-K	HPS Ballast, 250w, S50, 5-TAP, CWA, Kit
94413	S-400-4T-CWA-K	HPS Ballast, 400w, S51, Quad, CWA, Kit
99923	S-400-5T-CWA-K	HPS Ballast, 400w, S51, 5-TAP, CWA, Kit
99937	S-1000-5T-CWA-K	HPS Ballast, 1000w, S52, 5-Tap, CWA, Kit

Note:
 Quad (4T) = 120, 208, 240, 277
 5-Tap (5T) = 120, 208, 240, 277, 480
 R-HPF = Reactor-High Power Factor
 R-NPF = Reactor-Normal Power Factor
 HX-HPF = High Reactance - High Power Factor
 CWA = Constant Wattage Autotransformer
 PS-CWA = Pulse Start Constant Wattage Autotransformer



• Specifications are subject to change without notice.

LED T8 Lamps

UPC	Model #	Description
08396	F17T8/840/LED/11W	2 Ft. Linear T8 LED Retrofit, 11W Lamp, 80+ CRI, 4000K
08397	F17T8/850/LED/11W	2 Ft. Linear T8 LED Retrofit, 11W Lamp, 80+ CRI, 5000K

UPC	Model #	Description
62010	F32T8/835/LED/14W	4 Ft. Linear T8 LED Lamp, 80+ CRI, 3500K
62012	F32T8/850/LED/14W	4 Ft. Linear T8 LED Lamp, 80+ CRI, 5000K
08394	F32T8/840/LED/16W/AC*	4 Ft. Linear T8 LED LINE-V, 16W Lamp, 80+ CRI, 4000K
08395	F32T8/850/LED/16W/AC*	4 Ft. Linear T8 LED LINE-V, 16W Lamp, 80+ CRI, 5000K
08939	F32T8/840/LED/12.5/AC*	4 Ft. Linear T8 LED LINE-V, 12.5W Lamp, 80+ CRI, 4000K
08940	F32T8/850/LED/12.5/AC*	4 Ft. Linear T8 LED LINE-V, 12.5W Lamp, 80+ CRI, 5000K

*Lamps will qualify for DLC 4.0.

UPC	Model #	Description
08398	FB32T8/840/LED/12W	LEDT8 Retrofit U-Lamp, 80+ CRI, 4000K
08399	FB32T8/850/LED/12W	LEDT8 Retrofit U-Lamp, 80+ CRI, 5000K



LED Area Light Lamp

Case Quantity = 12 lamps



UPC	Model #	Description
09012	LEDMAR-3080-MV	3000K, 80W, EX39 Mogul Base
09011	LEDMAR-30110-MV	3000K, 110W, EX39 Mogul Base
09014	LEDMAR-4080-MV	4000K, 80W, EX39 Mogul Base
09013	LEDMAR-40110-MV	4000K, 110W, EX39 Mogul Base

LED Lamp

Case Quantity = 12 lamps



UPC	Model #	Description
08824	LEDMBR-30115-MV	3000K, 115W, EX39 Mogul Base
08823	LEDMBR-40115-MV	4000K, 115W, EX39 Mogul Base

LED Medium Modul Base Replacement Lamp

Case Quantity = 16 lamps



No ballast needed (UL Type B)
Internal Driver/Line Voltage Lamp
Remove ballast from fixture

UPC	Model #	Description
08605	LEDMEDR-3015-MV	3000K, 15W, 1950 Lumens, E26 MED Base
08597	LEDMEDR-3019-MV	3000K, 19W, 2470 Lumens, E26 MED Base
08598	LEDMEDR-3024-MV	3000K, 24W, 3120 Lumens, E26 MED Base
08606	LEDMEDR-4015-MV	4000K, 15W, 1950 Lumens, E26 MED Base
08506	LEDMEDR-4019-MV	4000K, 19W, 2470 Lumens, E26 MED Base
08569	LEDMEDR-4024-MV	4000K, 24W, 3120 Lumens, E26 MED Base

LED MR Lamp (EX39 Mogul Base)

Case Quantity = 12 lamps



UPC	Model #	Description
08820	LEDMHR-3080-MV	3000K, 80W, EX39 Base Internal Driver/Line Voltage Lamp
08822	LEDMHR-30100-MV	3000K, 100W, EX39 Base Internal Driver/Line Voltage Lamp
08819	LEDMHR-4080-MV	4000K, 80W, EX39 Base Internal Driver/Line Voltage Lamp
08821	LEDMHR-40100-MV	4000K, 100W, EX39 Base Internal Driver/Line Voltage Lamp

• Specifications are subject to change without notice.

LEDMR "Corn" Lamp

Case Quantity = 12 lamps



UPC	Model #	Description
08568	LEDMR-3030-MV	3000K, 30W, 5000 Lumens, Slight Frost Cover, E39 Base Internal Driver/Line Voltage Lamp
08684	LEDMR-3040-MV	3000K, 40W, 6250 Lumens, Slight Frost Cover, E39 Base Internal Driver/Line Voltage Lamp
08456	LEDMR-3050-MV	3000K, 50W, 5000 Lumens, Slight Frost Cover, E39 Base Internal Driver/Line Voltage Lamp
08755	LEDMR-4030-MV	4000K, 30W, 6250 Lumens, Slight Frost Cover, E39 Base Internal Driver/Line Voltage Lamp
08454	LEDMR-4040-MV	4000K, 40W, 5000 Lumens, Slight Frost Cover, E39 Base Internal Driver/Line Voltage Lamp
08455	LEDMR-4050-MV	4000K, 50W, 6250 Lumens, Slight Frost Cover, E39 Base Internal Driver/Line Voltage Lamp

LED Mogul Base Replacement Lamp

Case Quantity = 16 lamps
















UPC	Model #	Description
08626	LEDMXR-3027-MV	3000K, 27W, 2900 Lumens, E39 MED Base
08621	LEDMXR-3036-MV	3000K, 39W, 2900 Lumens, E39 MED Base
08620	LEDMXR-3045-MV	3000K, 45W, 4900 Lumens, E39 MED Base
08617	LEDMXR-3054-MV	3000K, 54W, 5900 Lumens, E39 MED Base
08625	LEDMXR-4027-MV	4000K, 27W, 2900 Lumens, E39 MED Base
08628	LEDMXR-4036-MV	4000K, 36W, 3900 Lumens, E39 MED Base
08619	LEDMXR-4045-MV	4000K, 45W, 4900 Lumens, E39 MED Base
08616	LEDMXR-4054-MV	4000K, 54W, 5900 Lumens, E39 MED Base

• Specifications are subject to change without notice.

Linear Fluorescent Lamps

Case Quantity = 25 lamps

UPC	Model #	Description
T8 Energy Saving Low Mercury Lamps		
01502	F17T8/730/ECO	2 Ft. 17W T8, 1350 Lumens, 75 CRI, 3000K
02243	F17T8/830	2 Ft. 17W T8, 1400 Lumens, 83 CRI, 3000K
01505	F17T8/830/ECO	2 Ft. 17W T8, 1400 Lumens, 85 CRI, 3000K
02244	F17T8/835	2 Ft. 17W T8, 1400 Lumens, 83 CRI, 5000K
02245	F17T8/841	2 Ft. 17W T8, 1400 Lumens, 83 CRI, 4100K
02781	F17T8/865	2 Ft. 17W T8, 1400 Lumens, 83 CRI, 6500K
02922	F25T8/830/ES/ECO	4 Ft. 25W T8 Energy Saving, 2500 Lumens, 85 CRI, 3000K
03910	F25T8/830/ES/ECO/IC	4 Ft. 25W T8 Energy Saving, 2500 Lumens, 85 CRI, 3000K
04683	F25T8/835/ES/ECO/IC	4 Ft. 25W T8 Energy Saving, 2500 Lumens, 85 CRI, 3500K
04684	F25T8/841/ES/ECO/IC	4 Ft. 25W T8 Energy Saving, 2500 Lumens, 85 CRI, 3500K
04685	F25T8/850/ES/ECO/IC	4 Ft. 25W T8 Energy Saving, 2500 Lumens, 85 CRI, 5000K
 03910	F28T8/830/ES/ECO/IC	4 Ft. 25W T8 Energy Saving, 2725 Lumens, 85 CRI, 3000K
 06991	F28T8/835/ES/ECO/IC	4 Ft. 25W T8 Energy Saving, 2725 Lumens, 85 CRI, 3500K
 03757	F28T8/841/ES/ECO/IC	4 Ft. 28W T8 Energy Saving, 2725 Lumens, 85 CRI, 4100K
 04023	F28T8/850/ES/ECO/IC	4 Ft. 28W T8 Energy Saving, 2725 Lumens, 85 CRI, 5000K
 08070	F28T8/841/ES/ECO/LL	4 Ft. 25W T8 ES Long Life, 2585 Lumens, 84 CRI, 4100K
 08071	F28T8/850/ES/ECO/LL	4 Ft. 25W T8 ES Long Life, 2585 Lumens, 84 CRI, 5000K
03759	F32T8/835/ECO/IC	4 Ft. 32W T8, 2950 Lumens, 85 CRI, 3500K
03760	F32T8/841/ECO/IC	4 Ft. 32W T8, 2950 Lumens, 85 CRI, 4100K
T8 High Lumen Low Mercury Lamps		
 03753	F32T8/830/HL/ECO/IC	4 Ft. 32W T8 High Lumen, 3100 Lumens, 85 CRI, 3000K
 03754	F32T8/835/HL/ECO/IC	4 Ft. 32W T8 High Lumen, 3100 Lumens, 85 CRI, 3500K
 03755	F32T8/841/HL/ECO/IC	4 Ft. 32W T8 High Lumen, 3100 Lumens, 85 CRI, 4100K
 03756	F32T8/850/HL/ECO/IC	4 Ft. 32W T8 High Lumen, 3100 Lumens, 85 CRI, 5000K
 08072	F32T8/835/HL/ECO/LL	4 Ft. 32W T8 HL Long Life, 3100 Lumens, 81 CRI, 3500K
 08073	F32T8/841/HL/ECO/LL	4 Ft. 32W T8 HL Long Life, 3100 Lumens, 81 CRI, 4100K
T8 U-Bent 6 Inch Spacing Low Mercury Lamps		
 01534	FB28T8/841/ES/ECO	U-Bent 28W T8 Energy Saving, 2400 Lumens, 85 CRI, 4100K
02262	FB32T8/830/6	U-Bent 32W T8, 3000 Lumens, 85 CRI, 3000K
02263	FB32T8/835/6	U-Bent 32W T8, 3000 Lumens, 85 CRI, 3500K
02264	FB32T8/841/6	U-Bent 32W T8, 3000 Lumens, 85 CRI, 4100K
02978	FB32T8/850/6	U-Bent 32W T8, 3000 Lumens, 85 CRI, 5000K
T5 High Output Low Mercury Lamps		
01571	F54T5/841/HO	4 Ft. 54W T5 High Output, 5400 Lumens, 85CRI, 4100K
02784	F54T5/850/HO	4 Ft. 54W T5 High Output, 5400 Lumens, 85CRI, 5000K

 Listed Visit www.cee1.org for more information

 Long Life T8 lamps provide 75,000 hours of rated life when used with a programmed start ballast and 60,000 hours of rated life when used with an instant start ballast. Rates established at three hours per start. Check with factory for a list of approved ballasts.

• Specifications are subject to change without notice.

High Intensity Discharge Lamps

Case Quantity = 12 lamps
(Exceptions noted)

Mercury Vaport Lamps*		
UPC	Model #	Description
01155	H39KB-175	175W ED28 MOG J39 Universal Burn Clear Bulb
01154	H39KC-175/DX	175W ED28 MOG H39 Universal Burn Coated Bulb
01156	H37KC-250/DX	250W ED28 MOG H37 Universal Burn Coated Bulb
01159	H33CD-400	400W ED37 MOG H33 Universal Burn Clear Bulb
01158	H33GL-400/DX	400W ED37 MOG H33 Universal Burn Coated Bulb
Metal Halide Lamps*		
UPC	Model #	Description
01102	MH50/U/MED	50W ED17 MED M110/E Universal Burn Clear Bulb
01104	MH70/U/MED	70W ED17 MED M98/E Universal Burn Clear Bulb
01106	MH100/U/MED	100W ED17 MED M90/E Universal Burn Clear Bulb
01108	MH150/U/MED	150W ED17 MED M102/E Universal Burn Clear Bulb
03911	MH150/U	150W ED28 MOG M102/E Universal Burn Clear Bulb
01110	MH175/U/MED	175W ED17 MED M57/E Universal Burn Clear Bulb
01112	MH175/U	175W ED28 MOG M57/E Universal Burn Clear Bulb
01114	MH250/U	250W ED28 MOG M58/E Universal Burn Clear Bulb
01122	MH400/U/ED28	400W ED28 MOG M59/E Universal Burn Clear Bulb
01119	MH400/U	400W ED37 MOG M59/E Universal Burn Clear Bulb
01126	MH1000/U	1000W BT56 MOG M47/E Universal Burn Clear Bulb (Qty = 6)
08131	MH1000/U/ED37	1000W ED37 MOG M47/E Universal Burn Clear Bulb (Qty = 6)
02107	MH1500/HBU	1500W BT56 MOG M48/E Horizontal Base Up Clear Bulb (Qty = 6)
Protected Metal Halide Lamps - Open Rated		
01920	MP50/U/MED	50W ED17 MED M110/O Universal Burn
01922	MP70/U/MED	70W ED17 MED M98/O Universal Burn
01924	MP100/U/MED	100W ED17 MED M90/O Universal Burn
01926	MP150/U/MED	150W ED17 MED M102/O Universal Burn
01117	MP250/BU	250W BT28 MOG (EX39) M58/O Base Up Burn
07879	MP400/BU/ED37	400W ED37 MOG (EX39) M59/O Base Up Burn



• Specifications are subject to change without notice.

High Intensity Discharge Lamps

Pulse Start Metal Halide Lamps*

UPC	Model #	Description
06472	MH250/U/ED28/PS	250W ED28 MOG M153/E Universal Burn Clear Bulb
02689	MH250/BU/ED28/PS	250W ED28 MOG M138/E Base Up Burn Clear Bulb
03845	MH250/HOR/ED28/PS	250W ED28 MOG M138/E Horizontal Burn Clear Bulb
03873	MH320/U/ED28/PS	320W ED28 MOG M132/E Universal Burn Clear Bulb
02693	MH320/BU/ED28/PS	320W ED28 MOG M132/E Base Up Burn Clear Bulb
06473	MH400/U/ED28/PS	400W ED28 MOG M135/E Universal Burn Clear Bulb
03847	MH400/HOR/ED28/PS	400W ED28 MOG M135/E Horizontal Burn Clear Bulb
02701	MH400/BU/ED37/PS	400W ED37 MOG M135/E Base Up Burn Clear Bulb
07494	MH750/BU/ED37/PS	750W ED37 MOG M149/E Base Up Burn Clear Bulb
07489	MH1000/BU/ED37/PS	1000W ED37 MOG M141/E Base Up Burn Clear Bulb (Qty = 6)
Protected Pulse Start Metal Halide Lamps - Open Rated		
02691	MP250/BU/ED28/PS	250W ED28 MOG (EX39) M138/O Base Up Burn Clear Bulb
02695	MP320/BU/ED28/PS	320W ED28 MOG (EX39) M132/O Base Up Burn Clear Bulb
02703	MP400/BU/ED37/PS	400W ED37 MOG (EX39) M135/O Base Up Burn Clear Bulb



* Specifications are subject to change without notice.



HOWARDTM
LIGHTING PRODUCTS

580 Eastview Drive | Laurel, MS 39443
Toll Free: 800.956.3456
Direct: 601.422.0033
Fax: 601.422.1652
www.howard-lighting.com