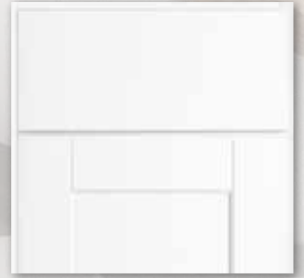




# Kitchen Cabinetry Program Notebook



**HAMPTON**  
Cognac



**SHAKER**  
Satin White (RTF)



**HAMPTON**  
Natural Hickory



**SHAKER**  
Dove Gray (RTF)



**HAMPTON**  
Medium Oak



**SHAKER**  
Java



**HAMPTON**  
Satin White (RTF)



**UNFINISHED**

# Table of Contents

<b>Vendor Information</b> .....	<b>2</b>
<b>Product Specifications</b> .....	<b>3-4</b>
<b>Door Styles and Finishes</b> .....	<b>5</b>
<b>Model Number Guide</b> .....	<b>6</b>
<b>Wall Cabinets</b> .....	<b>7-8</b>
<b>Base Cabinets</b> .....	<b>9 -12</b>
<b>Pantry Cabinets and Oven Cabinets</b> .....	<b>12 -13</b>
<b>Accessories</b> .....	<b>13-17</b>
<b>Design and Layout Ideas</b> .....	<b>19-21</b>
<b>Care and Cleaning, Wood Characteristics</b> .....	<b>22</b>
<b>Order Processing and RTV Procedures</b> .....	<b>22</b>
<b>Warranty Details</b> .....	<b>23</b>

## What is Hampton Bay® Brand Kitchens?

---

Hampton Bay brand cabinetry is manufactured by RSI Home Products. Hampton Bay offers multiple programs to meet most of your customer needs. The choice is simple.

### Three Programs in One

#### 1. In-Stock – Take cabinets home today

- Essential cabinet selection for most kitchens
- Finish availability varies by store

#### 2. Express Options® Special Order – Delivered to the store within 3 weeks

- Expanded cabinet selection
- All styles and finishes available

#### 3. PRO Program – Volume discounts available. Delivered direct to the job site within 3 weeks

- Includes all stock and Express Options cabinets and accessories
- All styles and finishes available



## Vendor Information

---

<b>Manufacturer:</b>	RSI Home Products, Inc.	<b>RSI Customer Service Hours:</b>	Monday through Friday 6:00 a.m.-4:00 p.m. Pacific Time
<b>In-Stock Vendor #:</b>	71203	<b>Hampton Bay Customer Service #:</b>	(877) 527-0313
<b>Special Order Vendor #:</b>	60071203	<b>RSI Customer Service #:</b>	(888) 578-4009
<b>Pro Program Vendor #:</b>	60081766	<b>Order Processing Fax #:</b>	(714) 441-4910
<b>Delivery Fee Applicable:</b>	NONE		
<b>Visit us at:</b>	<a href="http://www.hamptonbaycabinets.com">www.hamptonbaycabinets.com</a>		

## 20-20 Catalogs

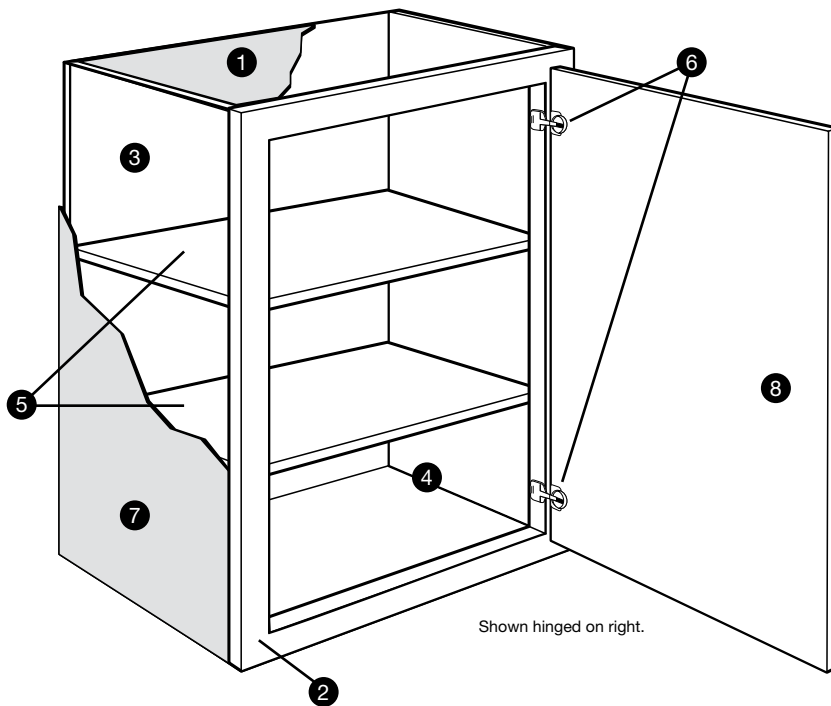
---

20-20 Catalogs, listed below are catalogs for core markets, there are additional catalogs in 20-20 depending on market pricing. Refer to 20/20 to confirm catalog for your market. Please note: catalog description (HBFI\_SK) can vary by a single digit.

**HBK\_SK:** In-Stock Pick List for all Finished and Unfinished Cabinetry

**HBK\_SO:** Express Options Special Order for all Finished and Unfinished Cabinetry

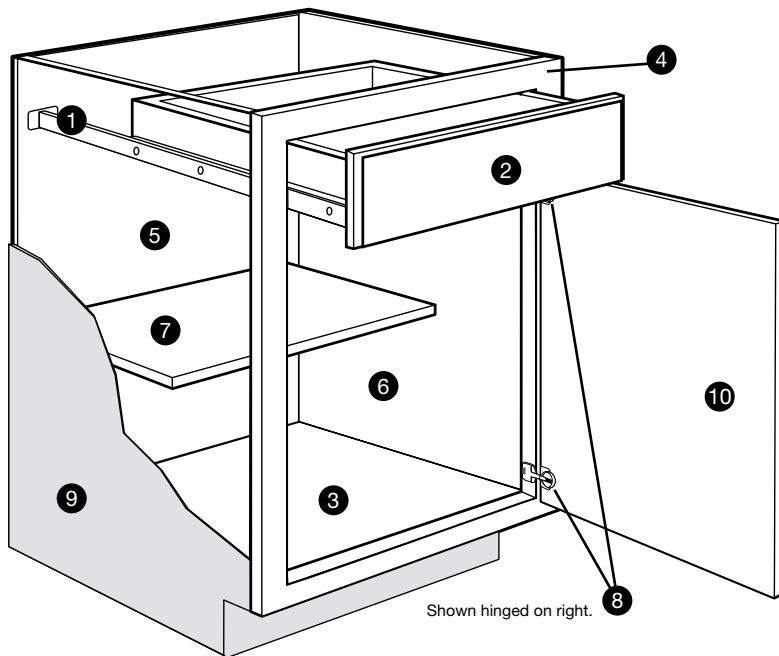
# Product Specifications



Shown hinged on right.

## Wall Cabinets

- ① **Top/Bottom Panels:** 3/8" engineered wood fully encapsulated in the face frame, back and side panels.
- ② **Face Frame:** Pocket screw construction with 3/4" thick, 1-1/2" wide material.
- ③ **Back Panel:** Full 3/8" back panel fully encapsulated into top and bottom panels for strength.
- ④ **Interiors:** Natural maple laminate finish on engineered wood.
- ⑤ **Shelves:** 3/4" thick adjustable shelves with metal shelf pins
- ⑥ **Hinges:** Fully concealed and adjustable
- ⑦ **End Panels:** Finished cabinetry – 1/2" engineered wood with laminated exterior to match cabinet finish. Unfinished cabinetry – 1/2" engineered wood with raw exterior.
- ⑧ **Door:** Reversible door on single-door cabinets for left or right opening. Hinged on the left from the factory. Double door cabinets are full-access, no center stile.



Shown hinged on right.

## Base Cabinets

- ① **Drawer Glides:**  
Finished cabinetry – Ball-Bearing  
Unfinished cabinetry – Epoxy
- ② **Drawer Box:** Hardwood 4-sided drawer box with fully encapsulated bottom panel.
- ③ **Bottom Panels:** 3/8" engineered wood fully encapsulated in the face frame, back and side panels.
- ④ **Face Frame:** Pocket screw construction with 3/4" thick, 1-1/2" wide material.
- ⑤ **Back Panel:** Full 3/8" hardboard with a natural maple laminate interior. Sink bases must be cut for plumbing access.
- ⑥ **Interiors:** Natural maple laminate finish on engineered wood.
- ⑦ **Shelf:** 3/4" thick adjustable half-depth shelf.
- ⑧ **Hinges:** Fully concealed and adjustable.
- ⑨ **End Panels:** Finished cabinetry – 1/2" engineered wood with laminated exterior to match cabinet finish; Unfinished cabinetry – 1/2" engineered wood with raw exterior.
- ⑩ **Door:** Reversible door on single-door cabinets for left or right opening. Hinged on the left from the factory. Double door cabinets are full-access, no center stile.

Finished Cabinetry

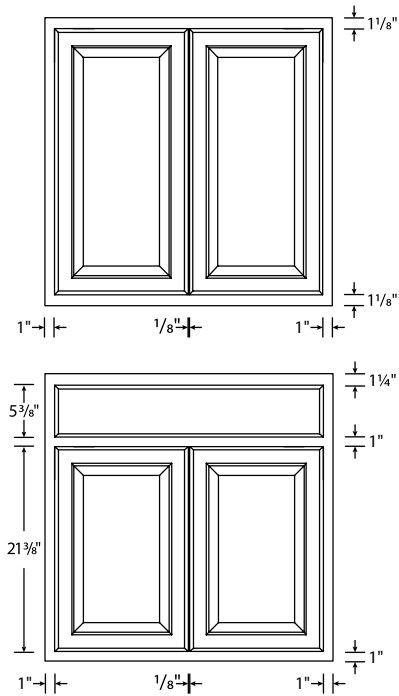


Unfinished Cabinetry

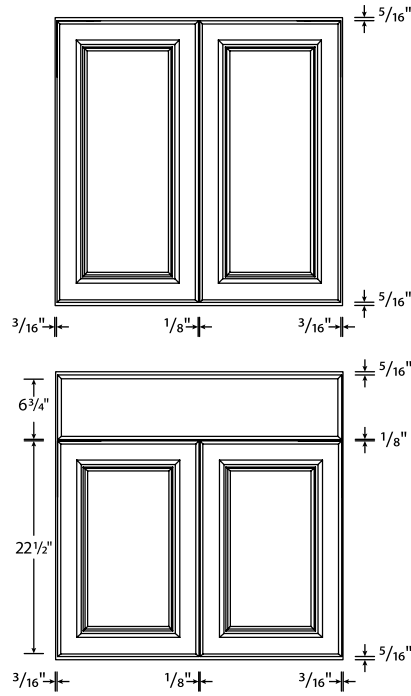


# Product Specifications

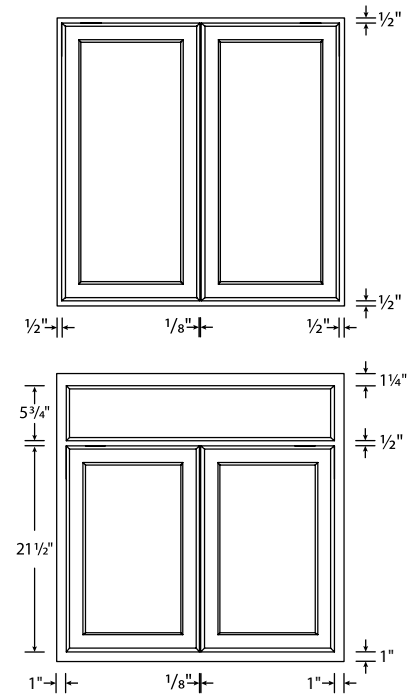
## Traditional Overlay



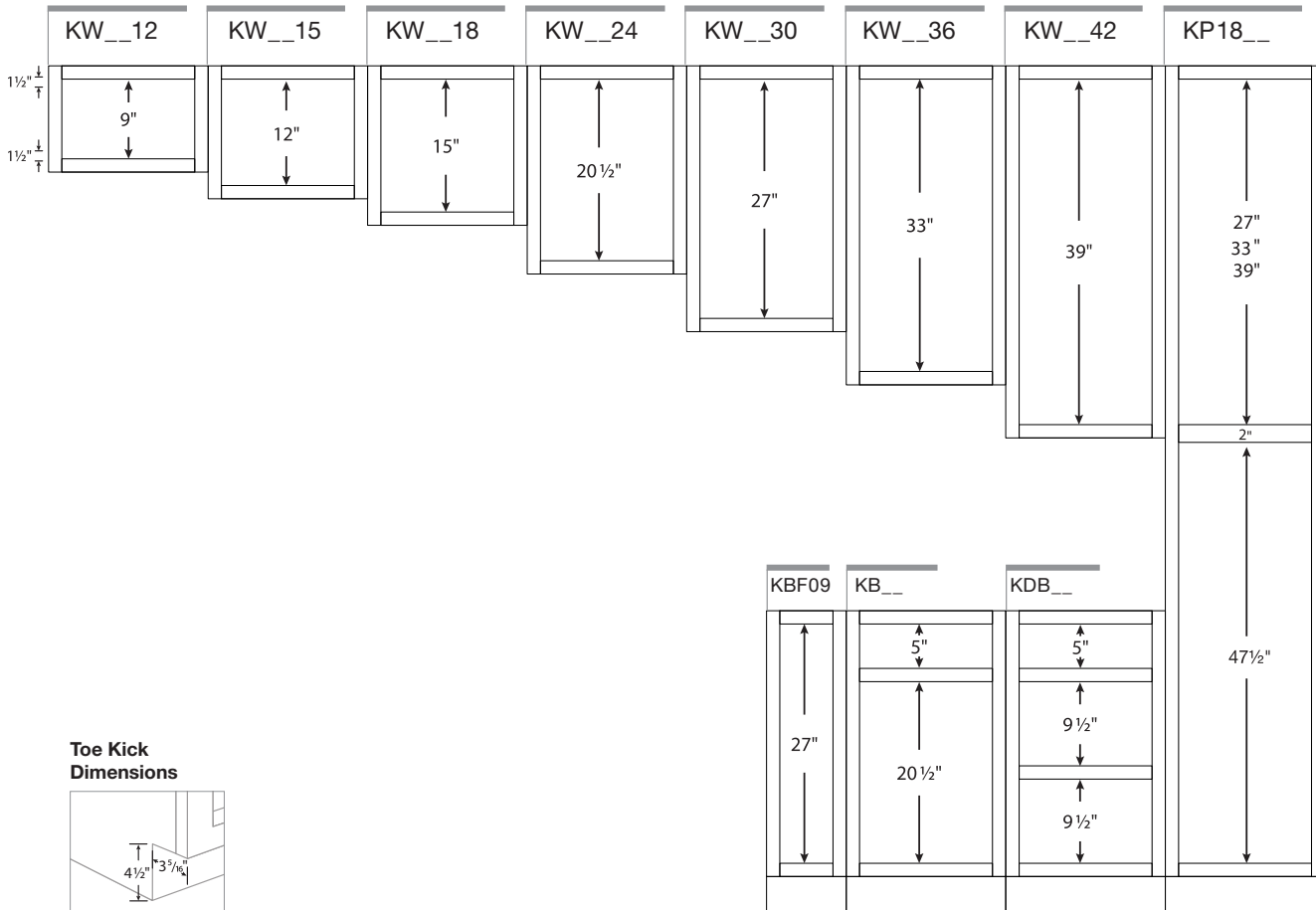
## Full Overlay



## Unfinished

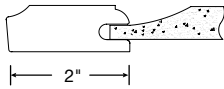
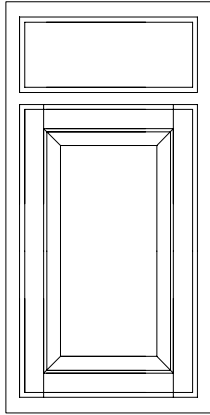


## Case Opening Dimensions



# Door Styles and Finishes

## Hampton



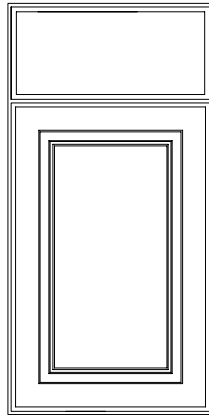
### Finishes

Cognac (COG)  
Natural Hickory (NHK)  
Medium Oak (MO)

### Details

Mortise and Tenon Construction  
Traditional Overlay  
Raised Panel

## Hampton RTF



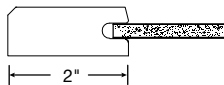
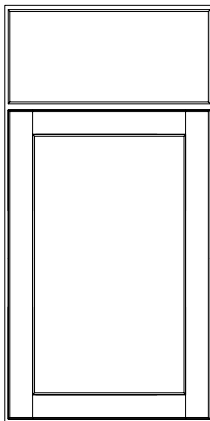
### Finish

Satin White RTF (SW)

### Details

Routed MDF  
Full Overlay  
Raised Panel

## Shaker



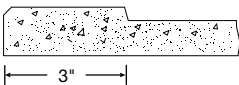
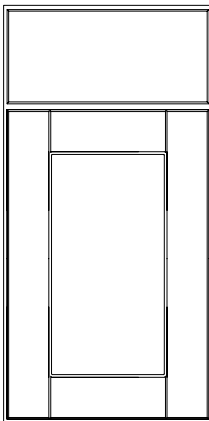
### Finishes

Java (SJM)

### Details

Mortise and Tenon Construction  
Full Overlay  
Recessed Panel

## Shaker RTF



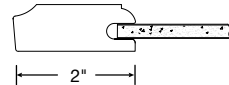
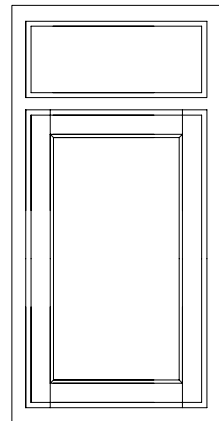
### Finishes

Satin White RTF (SSW)  
Dove Gray (SDV)

### Details

Routed MDF  
Full Overlay  
Recessed Panel

## Unfinished



### Details

Mortise and Tenon Construction  
Traditional Overlay  
Recessed Panel  
Ready to Stain or Paint

# Model Number Guide

## Finished and Unfinished Cabinetry

# KW1230-COG

Kitchen	Type of Cabinet/ Accessory	Width (in.)	Height (in.)	Door Style and Finish
---------	-------------------------------	-------------	--------------	-----------------------

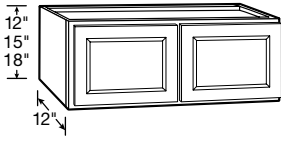
Types of Cabinets	
<b>W</b>	Wall/Wall Bridge Cabinet
<b>WD</b>	Corner Wall Cabinet
<b>WFC</b>	Wall Flex Cabinet
<b>BF</b>	Base Cabinet with Full Height Door
<b>B</b>	Base Cabinet
<b>DB</b>	Drawer Base Cabinet
<b>SB</b>	Sink/Cooktop Base Cabinet
<b>CSB</b>	Corner Sink Base Cabinet
<b>SBA</b>	Accessible Sink Base Cabinet
<b>BBC</b>	Blind Base Corner Cabinet
<b>BLS</b>	Lazy Susan Corner Base Cabinet
<b>P</b>	Pantry Cabinet
<b>BW</b>	Waste Bin Base Cabinet
<b>WMS</b>	Wall Flex Shelving
<b>KAREP</b>	Refrigerator End Panel
<b>SBD</b>	Apron Front Sink Base Cabinet
<b>DV</b>	Double Oven Cabinet
<b>VSB</b>	Vanity Sink Base Cabinet
<b>VDB</b>	Vanity Drawer Base

Types of Accessories	
<b>AS</b>	Wall/Base Veneer End Panel
<b>AIE</b>	Island/Peninsula Veneer End Panel
<b>AEP</b>	Decorative Wall/Base End Panel
<b>ADEP</b>	Dishwasher End Panel
<b>AUP</b>	Universal Panel
<b>ADPK</b>	Decorative Island Panel Kit
<b>ADCP</b>	Decorative Corner Post
<b>AFS</b>	Filler
<b>ADWR</b>	Base Pull-Out Drawer
<b>ATKX</b>	Toe Kick Molding
<b>AMTX</b>	Shoe Trim Molding
<b>AMSX</b>	Scribe Molding
<b>AMC5X</b>	Crown Molding - Traditional
<b>AMC4X</b>	Crown Molding- Shaker
<b>AOCMX</b>	Outside Corner Molding
<b>AMBSX</b>	Base Molding
<b>AMSQX</b>	Square Edge Molding
<b>AMDEX</b>	Decorative Edge Molding
NOTE: X at end denotes single pack through Express Options®.	

Door Style and Finish	
<b>COG</b>	Hampton Cognac
<b>NHK</b>	Hampton Natural Hickory
<b>MO</b>	Hampton Medium Oak
<b>SW</b>	Hampton Satin White RTF
<b>SJM</b>	Shaker Java
<b>SDV</b>	Shaker Dove Gray RTF
<b>SSW</b>	Shaker Satin White RTF
<b>UF</b>	Unfinished

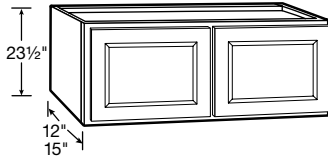
# Wall Cabinets

## 12", 15" & 18" High Wall Bridge Cabinet



Model	Hampton				Shaker			Unfinished
	Cognac (COG)	Hickory (NHK)	Oak (MO)	White (SW)	Gray (SDV)	Java (SJM)	White (SSW)	Unfinished (UF)
<b>KW3012</b>	505886	536805	495192	489762	1002405396	329339	542087	1002754238
<b>KW3612</b>	505999	537564	496670	490568	1002405388	338350	546684	1002754239
<b>KW3015</b>	506116	537106	495725	489787	1002405395	331309	542149	1002754266
<b>KW3615</b>	508378	537596	496776	490610	1002405387	338421	603646	1002754267
<b>KW3018</b>	487348	537137	495827	489886	1002405394	332102	542159	1002754268
<b>KW3618</b>	441023	476980	460551	511384	1002405386	592492	645490	1002754269

## 23-1/2" High Wall Bridge Cabinet

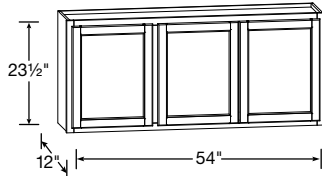


Model	Hampton				Shaker			Unfinished
	Cognac (COG)	Hickory (NHK)	Oak (MO)	White (SW)	Gray (SDV)	Java (SJM)	White (SSW)	Unfinished (UF)
<b>KW3024</b>	487439	490487	495880	492430	1002405393	333392	543987	1002754270
<b>KW3624</b>	487446	492293	496941	539785	1002405385	339863	603679	1002754272
<b>KW302415*</b>	506347	537175	487915	489949	1002405392	332637	542542	1002754271

- Includes 1 adjustable shelf
- Actual installed height is 23 1/2" tall
- \*KW302415 is 15" deep

• No adjustable shelf  
\* KW302415-UF is 15" deep

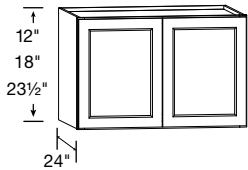
## 24" High Wall Bridge Cabinet



Model	Hampton				Shaker			Unfinished	
	Cognac (COG)	Hickory (NHK)	Oak (MO)	White (SW)	Gray (SDV)	Java (SJM)	White (SSW)	Model	
N/A								<b>KW5424-UF</b>	1002754240

- Actual installed height is 23 1/2" tall
- Includes 1 fixed shelf

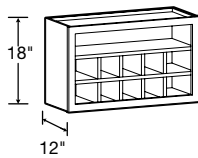
## 36"W Deep Bridge Cabinet - 24"D



Model	Hampton				Shaker			Unfinished
	Cognac (COG)	Hickory (NHK)	Oak (MO)	White (SW)	Gray (SDV)	Java (SJM)	White (SSW)	Unfinished (UF)
<b>KW361224</b>	1002405294	1002405301	1002405298	1002405310	1002405462	1002405304	1002405307	N/A
<b>KW361824</b>	1002405295	1002405302	1002405299	1002405311	1002405463	1002405305	1002405308	
<b>KW362424*</b>	1002405296	1002405303	1002405300	1002405312	1002405464	1002405306	1002405309	

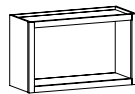
- Designed for use with Refrigerator End Panel
- Must be attached to back wall and either cabinet or walls on both sides
- \* 24"H model includes one shelf. Actual height is 23".

## 18" High Wall Flex Cabinet

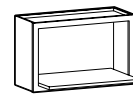
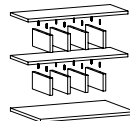


Model	Hampton				Shaker			Unfinished
	Cognac (COG)	Hickory (NHK)	Oak (MO)	White (SW)	Gray (DV)	Java (JM)	White (SW)	Unfinished (UF)
<b>KWFC3018</b>	447737	482107	469623	579015	1002405349	603365	579015	N/A

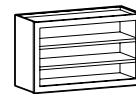
- Includes all shelves and dividers for multiple interior configurations
- Microwave shelf also included



For more design ideas see pg. 20

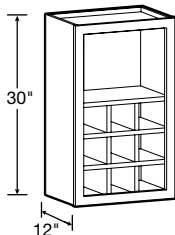


Microwave Shelf



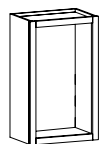
Open Shelves

## 30" High Wall Flex Cabinet

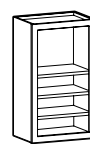
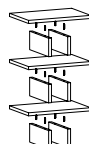


Model	Hampton				Shaker			Unfinished
	Cognac (COG)	Hickory (NHK)	Oak (MO)	White (SW)	Gray (DV)	Java (JM)	White (SW)	Unfinished (UF)
<b>KWFC1830</b>	452951	482657	471071	582133	1002405350	603394	582133	N/A

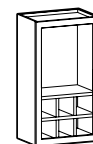
- Includes all shelves and dividers for multiple interior configurations



For more design ideas see pg. 20



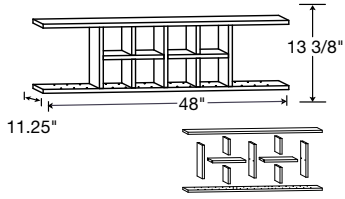
Open Shelves



Organizer Cubes

# Wall Cabinets

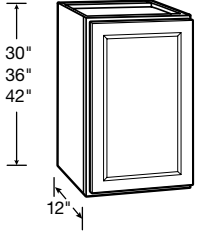
## Wall Flex Shelving



Model	Hampton				Shaker			Unfinished
	Cognac (COG)	Hickory (NHK)	Oak (MO)	White (SW)	Gray (DV)	Java (JM)	White (SW)	Unfinished (UF)
<b>KWMS4813</b>	1002405219	1002405222	1002405221	1002405223	1002405452	1002405220	1002405223	<b>N/A</b>
<ul style="list-style-type: none"> <li>• Can be trimmed to almost any size under 48"</li> <li>• Ready to Assemble</li> </ul>								

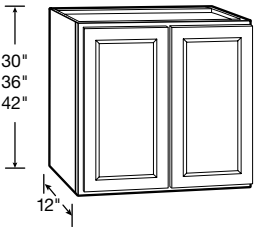
For more design ideas see pg. 20

## 30", 36" & 42" High Wall Cabinet (Single Door)



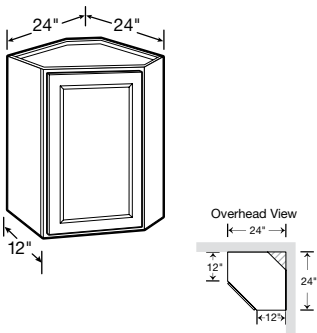
Model	Hampton				Shaker			Unfinished
	Cognac (COG)	Hickory (NHK)	Oak (MO)	White (SW)	Gray (SDV)	Java (SJM)	White (SSW)	Unfinished (UF)
<b>KW930</b>	509460	537636	497629	490701	1002405381	343553	742694	1002759047
<b>KW1230</b>	503267	521078	493074	487842	1002405413	317083	524636	1002754231
<b>KW1530</b>	503800	522318	493541	487939	1002405409	318644	535864	1002754232
<b>KW1830</b>	504102	524562	493678	488073	1002405406	321108	536443	1002754233
<b>KW2130</b>	504905	525715	494923	488997	1002405403	325991	536867	1002754253
<b>KW2430</b>	503134	490471	494993	489129	1002405401	327794	537729	1002754234
<b>KW936</b>	506743	537764	497699	490710	1002405380	344333	745548	1002754255
<b>KW1236</b>	502869	538297	493458	487871	1002405411	317370	533373	1002754256
<b>KW1536</b>	503812	490339	493616	487974	1002405408	319438	536190	1002754257
<b>KW1836</b>	504730	525568	493713	488265	1002405405	323732	536605	1002754258
<b>KW2136</b>	487197	531705	498657	539607	1002405402	326099	537354	1002754259
<b>KW2436</b>	505252	531796	495010	539642	1002405400	327953	539638	1002754260
<b>KW1242</b>	503745	538404	493516	487908	1002405410	317460	535122	<b>N/A</b>
<b>KW1542</b>	504044	522848	498607	488040	1002405407	320815	536254	<b>N/A</b>
<b>KW1842</b>	502987	538702	494887	488524	1002405404	324747	536769	<b>N/A</b>
<b>KW2442</b>	505556	490483	495035	489392	1002405399	328842	539803	<b>N/A</b>
<ul style="list-style-type: none"> <li>• 30", 36" and 42" heights include 2 adjustable shelves</li> <li>• Reversible door for left or right hinging</li> </ul>								<ul style="list-style-type: none"> <li>• Includes 1 adjustable shelf</li> </ul>

## Wall Cabinet (Double Door)



Model	Hampton				Shaker			Unfinished
	Cognac (COG)	Hickory (NHK)	Oak (MO)	White (SW)	Gray (SDV)	Java (SJM)	White (SSW)	Unfinished (UF)
<b>KW2730</b>	505689	532142	495043	489487	1002405398	328880	540739	1002754254
<b>KW3030</b>	503169	490508	496544	490134	1002405391	336925	545230	1002754235
<b>KW3630</b>	506320	538960	497072	490639	1002405384	340759	603696	1002754236
<b>KW2736</b>	505852	538747	495067	489722	1002405397	328938	541988	1002754262
<b>KW3036</b>	507109	537226	498782	492561	1002405390	337698	545956	1002754263
<b>KW3636</b>	508869	492330	497599	490691	1002405383	342971	603729	1002754264
<b>KW3042</b>	503221	491508	496609	490449	1002405389	337771	546024	<b>N/A</b>
<b>KW3642</b>	487542	539255	487941	539876	1002405382	343243	742589	<b>N/A</b>
<ul style="list-style-type: none"> <li>• 30", 36" and 42" heights include 2 adjustable shelves</li> </ul>								<ul style="list-style-type: none"> <li>• Includes 1 adjustable shelf</li> </ul>

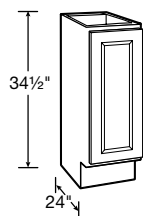
## 24" Corner Wall Cabinet



Model	Hampton				Shaker			Unfinished
	Cognac (COG)	Hickory (NHK)	Oak (MO)	White (SW)	Gray (SDV)	Java (SJM)	White (SSW)	Unfinished (UF)
<b>KWD2430</b>	487606	492395	498145	491140	1002405379	344803	745582	1002754237
<b>KWD2436</b>	509707	539260	498787	491302	1002405378	346332	786359	1002754265
<b>KWD2442</b>	507507	539266	498325	491957	1002405377	345188	786995	
<ul style="list-style-type: none"> <li>• Installs in a 24" x 24" wall area</li> <li>• 30" includes 1 adjustable shelf</li> <li>• 36" and 42" includes 2 adjustable shelves</li> <li>• Reversible door for left or right hinging</li> </ul>								<ul style="list-style-type: none"> <li>• Installs in a 24" x 24" wall area</li> <li>• Includes 1 adjustable shelf</li> </ul>

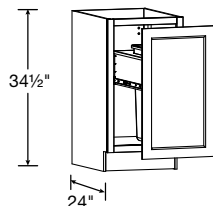
# Base Cabinets

## Base (Full Height Door)



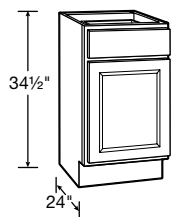
Model	Hampton				Shaker			Unfinished
	Cognac (COG)	Hickory (NHK)	Oak (MO)	White (SW)	Gray (SDV)	Java (SJM)	White (SSW)	Unfinished (UF)
<b>KBF09</b>	501457	507340	492355	487457	1002405437	314331	428740	1002754273
<ul style="list-style-type: none"> <li>• One, half-depth adjustable shelf included</li> <li>• Reversible door for left or right hinging</li> </ul>								<ul style="list-style-type: none"> <li>• One half-depth, adjustable shelf included</li> </ul>

## Waste Bin Base



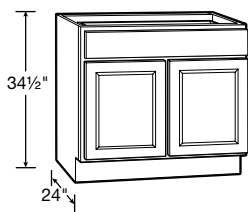
Model	Hampton				Shaker			Unfinished
	Cognac (COG)	Hickory (NHK)	Oak (MO)	White (SW)	Gray (SDV)	Java (SJM)	White (SSW)	Unfinished (UF)
<b>KBW18</b>	1002405263	1002405264	1002405261	1002405267	1002405458	1002405265	1002405266	N/A
<ul style="list-style-type: none"> <li>• Includes a 12 gallon trash can</li> </ul>								

## Base (Single Door)



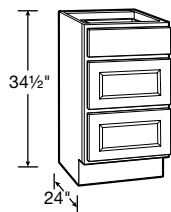
Model	Hampton				Shaker			Unfinished
	Cognac (COG)	Hickory (NHK)	Oak (MO)	White (SW)	Gray (SDV)	Java (SJM)	White (SSW)	Unfinished (UF)
<b>KB12</b>	487003	505693	491271	536480	1002405446	303299	412495	1002754241
<b>KB15</b>	518431	506124	491873	536557	1002405445	304334	412640	1002754242
<b>KB18</b>	487071	487039	487804	540412	1002405444	304418	414002	1002754243
<b>KB21</b>	487081	537839	492167	540536	1002405443	304896	414496	1002754274
<b>KB24</b>	500089	487078	487833	492190	1002405442	310097	416602	1002754244
<ul style="list-style-type: none"> <li>• Ball-bearing drawer glides</li> <li>• One half-depth adjustable shelf included</li> <li>• Reversible door for left or right hinging</li> </ul>								<ul style="list-style-type: none"> <li>• Epoxy drawer glides</li> <li>• One, half-depth adjustable shelf included</li> </ul>

## Base (Double Door)



Model	Hampton				Shaker			Unfinished
	Cognac (COG)	Hickory (NHK)	Oak (MO)	White (SW)	Gray (SDV)	Java (SJM)	White (SSW)	Unfinished (UF)
<b>KB27</b>	502126	487343	492295	492298	1002405441	312141	416917	1002754276
<b>KB30</b>	502163	487999	487861	487243	1002405440	312330	421408	1002754245
<b>KB36</b>	501214	538042	492323	487342	1002405439	313351	423587	1002754246
<ul style="list-style-type: none"> <li>• Ball-bearing drawer glides</li> <li>• One half-depth adjustable shelf included</li> </ul>								<ul style="list-style-type: none"> <li>• Epoxy drawer glides</li> <li>• One, half-depth adjustable shelf included</li> </ul>

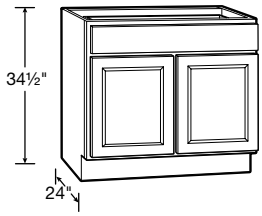
## Drawer Base



Model	Hampton				Shaker			Unfinished
	Cognac (COG)	Hickory (NHK)	Oak (MO)	White (SW)	Gray (SDV)	Java (SJM)	White (SSW)	Unfinished (UF)
<b>KDB18</b>	502217	509796	492392	492327	1002405434	315308	517572	1002754247
<b>KDB24</b>	502263	511287	492422	492359	1002405433	315742	518875	1002754249
<b>KDB30</b>	1002405239	1002405240	1002405246	1002405243	1002405455	1002405241	1002405242	N/A
<b>KDB36</b>	1002405247	1002405248	1002405253	1002405251	1002405456	1002405249	1002405250	N/A
<ul style="list-style-type: none"> <li>• 18" and 24" include ball-bearing drawer glides</li> <li>• 30" and 36" include full extension heavy duty drawer glides, on all three drawers</li> <li>• 30" and 36" are ideal for pots and pans</li> </ul>								<ul style="list-style-type: none"> <li>• Epoxy drawer glides</li> </ul>

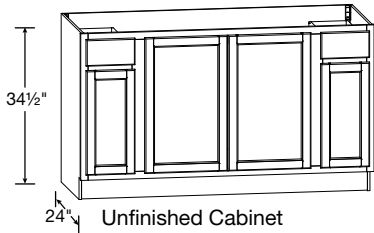
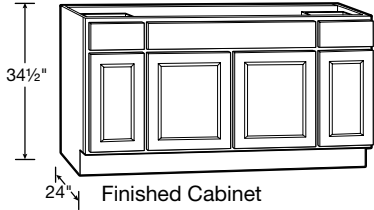
# Base Cabinets

## Sink/Cooktop Base



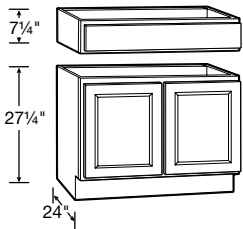
Model	Hampton				Shaker			Unfinished
	Cognac (COG)	Hickory (NHK)	Oak (MO)	White (SW)	Gray (SDV)	Java (SJM)	White (SSW)	Unfinished (UF)
<b>KSB30</b>	501610	520059	492623	487829	1002405418	316944	523246	1002754277
<b>KSB36</b>	487174	520173	492906	492382	1002405415	317060	523340	1002754250
• Full-height back panel								• Full-height back panel

## 60" Sink/Cooktop Base



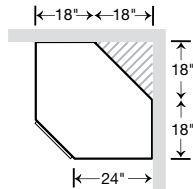
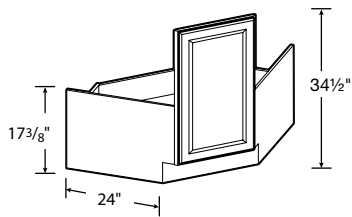
Model	Hampton				Shaker			Unfinished	
	Cognac (COG)	Hickory (NHK)	Oak (MO)	White (SW)	Gray (SDV)	Java (SJM)	White (SSW)	Model	
<b>KSB60</b>	N/A	N/A	In-Stock	In-Stock	N/A	N/A	N/A	<b>KSBF60-UF</b>	In-Stock
• Ball-bearing drawer glides • Full-height back panel								• Epoxy drawer glides • Full-height back panel	

## 36" Accessible Sink Base Cabinet



Model	Hampton				Shaker			Unfinished
	Cognac (COG)	Hickory (NHK)	Oak (MO)	White (SW)	Gray (SDV)	Java (SJM)	White (SSW)	Unfinished (UF)
<b>KSBA36</b>	435695	474503	457846	505643	1002405414	587006	644882	1002754278
• Exterior side panels are Natural Maple laminate								

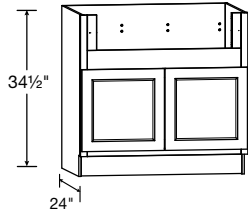
## 36" Corner Sink Base Cabinet



Model	Hampton				Shaker			Unfinished
	Cognac (COG)	Hickory (NHK)	Oak (MO)	White (SW)	Gray (SDV)	Java (SJM)	White (SSW)	Unfinished (UF)
<b>KCSB36</b>	439721	475068	459463	507706	1002405435	590533	645022	1002754279
• Ready to assemble • Installs in a 36" x 36" wall area								• Ready to assemble • Installs in a 36" x 36" wall area

# Base Cabinets

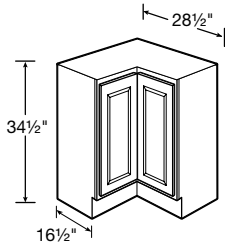
## 36" Apron Front Sink Base



Model	Hampton				Shaker			Unfinished
	Cognac (COG)	Hickory (NHK)	Oak (MO)	White (SW)	Gray (SDV)	Java (SJM)	White (SSW)	Unfinished (UF)
<b>KSBD36</b>	1002405255	1002405260	1002405256	1002405259	1002405457	1002405257	1002405258	<b>N/A</b>

- 2" side stiles and 4" rail are trimmable to accommodate various size apron front sinks and cooktops
- 29"\* W opening for sinks - can be trimmed to 33"W
- 7 1/2"H opening trimmable to 11"H
- \*Can accommodate smaller sizes with use of 3" or 6" filler

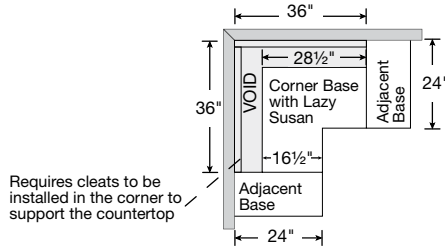
## 36" Corner Base with Lazy Susan



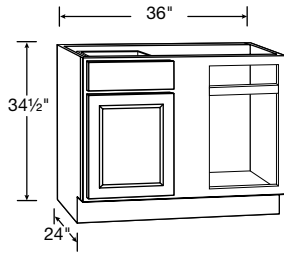
Model	Hampton				Shaker			Unfinished	
	Cognac (COG)	Hickory (NHK)	Oak (MO)	White (SW)	Gray (SDV)	Java (SJM)	White (SSW)	Model	
<b>KBLS36</b>	502166	509093	492362	487590	1002405436	314486	514416	<b>KBLSN36-UF</b>	1002754251

- Installs in a 36" x 36" wall area
- Two-piece overlay door hinged together in the middle
- Two 360° independently rotating metal racks
- Exterior side panels are Natural Maple laminate

- Fixed traveling door rotates inside of cabinet
- Two plastic trays



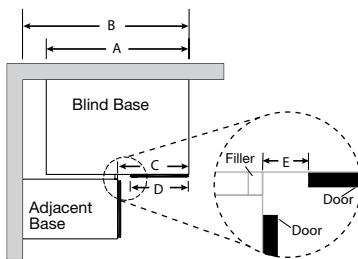
## 36" Blind Base Cabinet



Model	Hampton				Shaker			Unfinished
	Cognac (COG)	Hickory (NHK)	Oak (MO)	White (SW)	Gray (SDV)	Java (SJM)	White (SSW)	Unfinished (UF)
<b>KBBC45</b>	487089	488098	498392	487384	1002405438	313879	427881	1002754280

- Ball-bearing drawer glides
- Door and drawer are reversible to accommodate left or right blind

- Epoxy drawer glides

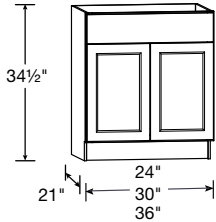
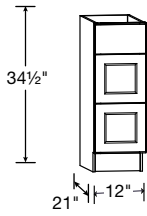


Overlay	A	B	C	D	E	Max B	Min B
Traditional Overlay	36"	42"	18"	13"	4"	46-1/2"	39-1/4"
Full Overlay	36"	42"	18"	14-3/4"	3-1/8"	46-1/2"	40-1/8"
Unfinished	36"	42"	18"	14"	3-1/2"	46-1/2"	39-3/4"

- Dimensions C & E only apply when cabinet is pulled to 42"

# Kitchen Vanities

## Vanities

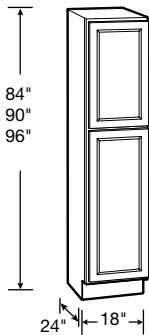


Model	Hampton				Shaker			Unfinished
	Cognac (COG)	Hickory (NHK)	Oak (MO)	White (SW)	Gray (SDV)	Java (SJM)	White (SSW)	Unfinished (UF)
<b>KVDB12</b>	1002405318	1002405315	1002405319	1002405317	1002405465	1002405320	1002405316	<b>N/A</b>
<b>KVSB24</b>	1002405325	1002405322	1002405326	1002405324	1002405466	1002405328	1002405323	
<b>KVSB30</b>	1002405333	1002405330	1002405334	1002405332	1002405467	1002405335	1002405331	
<b>KVSB36</b>	1002405342	1002405339	1002405343	1002405341	1002405468	1002405344	1002405340	

- KVSB24, KVSB30, and KVSB36 - Bases do not include a drawer
- KVDB12 includes three drawers
- Works with standard toe kick, KATKX, sold separately

## Pantry Cabinets

### 18" Pantry

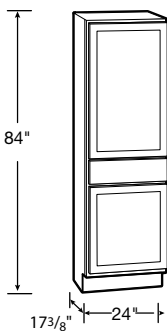


Model	Hampton				Shaker			Unfinished
	Cognac (COG)	Hickory (NHK)	Oak (MO)	White (SW)	Gray (SDV)	Java (SJM)	White (SSW)	Unfinished (UF)
<b>KP1884</b>	502420	488359	498553	492360	1002405432	315966	521423	1002754252
<b>KP1890</b>	487108	512244	487898	487769	1002405430	316353	521897	1002754281
<b>KP1896</b>	502693	517690	492501	539479	1002405424	316396	522016	<b>N/A</b>

- 84" and 90" includes 3 adjustable shelves and 1 fixed shelf
- 96" includes 4 adjustable shelves and 1 fixed shelf
- 96" pantry has removable toe kick that is field installed
- Upper door lines up with 30", 36" and 42" high wall cabinets

- Includes 2 adjustable shelves

### 24" Drawer Pantry

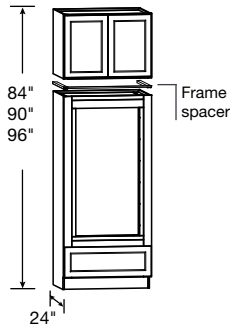


Model	Hampton				Shaker			Unfinished	
	Cognac (COG)	Hickory (NHK)	Oak (MO)	White (SW)	Gray (SDV)	Java (SJM)	White (SSW)	Model	
<b>N/A</b>								<b>KPDR2484-UF</b>	In-Stock

- Epoxy drawer glides
- Includes 2 adjustable shelves

# Oven Cabinet

## Double Oven Cabinet

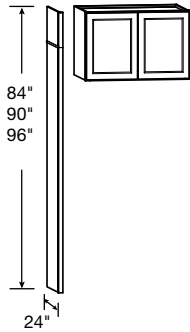


Model	Hampton				Shaker			Unfinished
	Cognac (COG)	Hickory (NHK)	Oak (MO)	White (SW)	Gray (SDV)	Java (SJM)	White (SW)	Unfinished (UF)
<b>KDV3384</b>	1002405272	1002405278	1002405275	1002405287	1002405459	1002405281	1002405284	<b>N/A</b>
<b>KDV3390</b>	1002405273	1002405279	1002405276	1002405288	1002405460	1002405282	1002405285	
<b>KDV3396</b>	1002405274	1002405280	1002405277	1002405290	1002405461	1002405283	1002405286	

- Includes drawer with full extension heavy duty drawer glides
- Includes 24" Deep Bridge Cabinet
- Overhead Bridge Cabinet is not pre-installed to oven cabinet, comes as two pieces, boxed separately
- Rails and stiles around oven opening are trimmable
- Cut-out dimensions:  
W: 24" minimum, 30" maximum\*  
H: 47 5/8"\* minimum, 52 1/8" maximum  
\* Can accommodate smaller sizes with use of 3" and 6" filler
- Frame spacer included in KDV3396 only; 96" double oven overhead bridge cabinet is 23 1/2" H

## Accessories

### 24" Refrigerator End Panel Kit

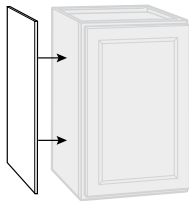


Model	Cognac (COG)	Hickory (NHK)	Oak (MO)	White (SW)	Gray (DV)	Java (JM)	Unfinished
	(COG)	(NHK)	(MO)	(SW)	(DV)	(JM)	Unfinished (UF)
<b>KAREP</b>	1002405212	1002405216	1002405214	1002405217	1002405451	1002405213	<b>N/A</b>

- Kit includes 1 pc 84"H end panel, 1 pc. of 12" H panel, 1 pc. of 6" H panel, 1 pc. of scribe molding
- Kits and Deep Refrigerator Bridge cabinets combine to achieve 84", 90" or 96" overall heights
- Pairs with 36" W Deep Refrigerator Bridge (24"D), sold separately- please see Wall Cabinets section
- Refrigerator End Panel Kit does not create a stand-alone cabinet; must be anchored to other cabinets/wall studs to be secure

For more design ideas see pg.21

### Wall & Base Veneer End Panel

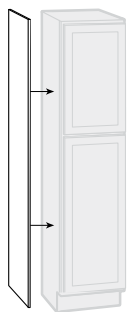


Model	Java (JM)	Cognac (COG)	Hickory (NHK)	Oak (MO)	Gray (DV)	White (SW)	Unfinished	
	(JM)	(COG)	(NHK)	(MO)	(DV)	(SW)	Model	1/Pack
<b>KAS1230 (2/Pack)</b>	298909	515523	500659	490580	1002405357	536194	<b>KASKW30-UF</b>	1002759041
<b>KAS1236 (2/Pack)</b>	299473	515584	501275	490615	1002405356	536318	<b>KASKW36-UF</b>	1002759048
<b>KAS1242 (2/Pack)</b>	299963	516472	502071	490670	1002405355	536341		
<b>KAS2435 (2/Pack)</b>	299983	517309	502255	490702	1002405354	536381	<b>KASKB35-UF</b>	1002759042
<b>KAIE4835X (Single)</b>	298226	512483	497500	490376	1002405366	535533	• 1/8" thick veneer panels	

- Finished veneer panels fit flush. Satin White and Dove Gray panels are laminate.
- Wall panels are 11-1/4" W
- Base panels are 23-1/4" W x 34-1/2" H
- Island/Peninsula panel is 48" W x 34-1/2" H

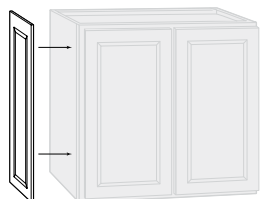
# Accessories

## Pantry End Panel



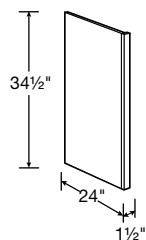
Model	Java	Cognac	Hickory	Oak	Gray	White	Unfinished	
	(JM)	(COG)	(NHK)	(MO)	(DV)	(SW)	Unfinished (UF)	
N/A							<b>KASKP84-UF</b>	1002759044
							<b>KASKP90-UF</b>	1002759049
• 1/8" thick veneer panels								

## Decorative End Panel



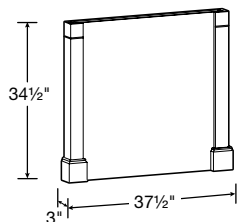
Model	Hampton				Shaker			Unfinished
	Cognac (COG)	Hickory (NHK)	Oak (MO)	White (SW)	Gray (SDV)	Java (SJM)	White (SSW)	Unfinished (UF)
<b>KAEP1230</b>	508987	492898	488008	540268	1002405450	296268	411910	N/A
<b>KAEP1530</b>	1002405225	1002405227	1002405226	000000	1002405453	1002405235	1002405236	
<b>KAEP1830</b>	1002405230	1002405232	1002405231	000000	1002405454	1002405237	1002405238	
<b>KAEP1236</b>	509694	493090	488039	532711	1002405449	296316	411928	
<b>KAEP1242</b>	509745	493315	488089	533241	1002405448	296480	412443	
<b>KAEP2430</b>	509810	495135	488212	534004	1002405447	296887	412458	

## Dishwasher End Panel



Model	Java	Cognac	Hickory	Oak	Gray	White	Unfinished
	(JM)	(COG)	(NHK)	(MO)	(DV)	(SW)	Unfinished (UF)
<b>KADEP</b>	295210	508783	492567	487992	1002405375	540145	1002759050

## Decorative Island Panel Kit



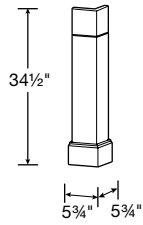
Model	Java	Cognac	Hickory	Oak	Gray	White	Unfinished
	(JM)	(COG)	(NHK)	(MO)	(DV)	(SW)	Unfinished (UF)
<b>KADPK337</b>	603463	454927	483362	471409	1002405374	582839	N/A

• Panel kit can be cut to accommodate different depths

For more design ideas see pg.21

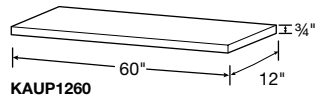
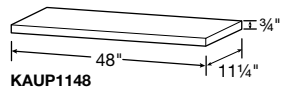
# Accessories

## Decorative Corner Post



Model							Unfinished
	Java (JM)	Cognac (COG)	Hickory (NHK)	Oak (MO)	Gray (DV)	White (SW)	Unfinished (UF)
<b>KADCP6</b>	603498	457781	484202	472338	1002405376	583021	<b>N/A</b>

## Universal Panels

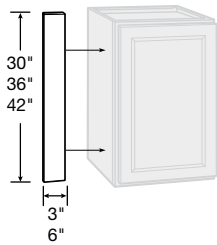


Model							Unfinished
	Java (JM)	Cognac (COG)	Hickory (NHK)	Oak (MO)	Gray (DV)	White (SW)	Unfinished (UF)
<b>KAUP1148</b>	594977	442115	479018	465235	1002405352	572184	<b>N/A</b>
<b>KAUP1260</b>	598815	443840	479121	469154	1002405351	574869	

• Laminate finish on five sides

For more design ideas see pg. 20

## Wall & Base Fillers



Model							Unfinished
	Java (JM)	Cognac (COG)	Hickory (NHK)	Oak (MO)	Gray (DV)	White (SW)	Unfinished (UF)
<b>KAFS330X</b>	297395	510182	496421	489506	1002405373	534142	1002759045
<b>KAFS336X</b>	297531	510799	496738	489778	1002405372	534799	1002759052
<b>KAFS342X</b>	297629	511599	496990	489790	1002405371	535023	<b>N/A</b>
<b>KAFS630X</b>	297946	512012	497254	490078	1002405369	535426	1002759051
<b>KAFS636X</b>	298033	512097	497353	490209	1002405368	535449	1002759053
<b>KAFS642X</b>	298145	512226	497438	490215	1002405367	535460	<b>N/A</b>

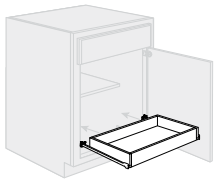
## 91-1/2" Pantry Filler



Model							Unfinished
	Java (JM)	Cognac (COG)	Hickory (NHK)	Oak (MO)	Gray (DV)	White (SW)	Unfinished (UF)
<b>KAFS396X</b>	297637	511728	497077	489940	1002405370	535337	1002759054

# Accessories

## Pull Out Drawer

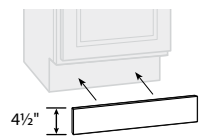


Model	N/A	Unfinished (UF)
<b>KADWR24</b>	498931	<b>N/A</b>
<b>KADWR30</b>	499090	

- Ball-bearing drawer glides
- Hardwood drawer box

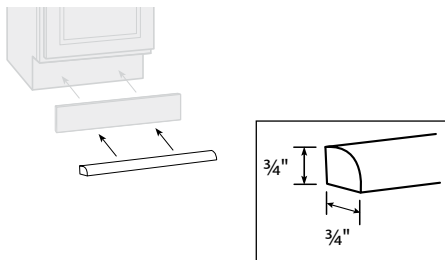
KADWR24 fits in 24" W Base  
KADWR30 fits in 30" W Base

## 91-1/2" Toe Kick Molding



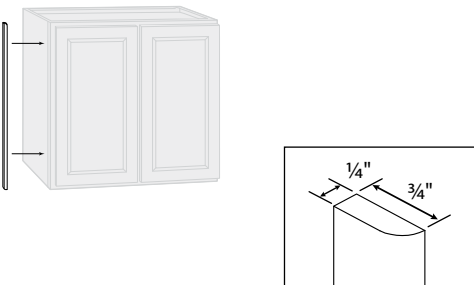
Model	Java (JM)	Cognac (COG)	Hickory (NHK)	Oak (MO)	Gray (DV)	White (SW)	Unfinished (UF)
<b>KATKX</b>	299996	518111	502617	490750	1002405353	536440	1002759046

## 91-1/2" Shoe Trim Molding



Model	Java (JM)	Cognac (COG)	Hickory (NHK)	Oak (MO)	Gray (DV)	White (SW)	Unfinished (UF)
<b>KAMTX</b>	298545	514931	500341	490439	1002405359	535945	1002759055

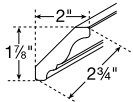
## 91-1/2" Scribe Molding



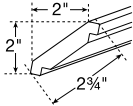
Model	Java (JM)	Cognac (COG)	Hickory (NHK)	Oak (MO)	Gray (DV)	White (SW)	Unfinished (UF)
<b>KAMSX</b>	298283	514305	499763	490425	1002405360	535628	1002759056

# Accessories

## 91-1/2" Crown Molding



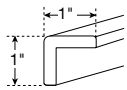
**KAMC5X - Traditional**



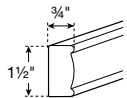
**KAMC4X - Shaker**

Model							Unfinished
	Java (JM)	Cognac (COG)	Hickory (NHK)	Oak (MO)	Gray (DV)	White (SW)	Unfinished (UF)
<b>KAMC5X</b>	<b>N/A</b>	512570	497596	490412	<b>N/A</b>	535591	1002759057
<b>KAMC4X</b>	669807	668444	<b>N/A</b>	<b>N/A</b>	1002405364	670461	<b>N/A</b>

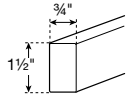
## 91-1/2" Molding



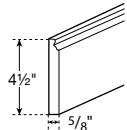
**KAOCMX - Outside Corner**



**KAMDEX - Decorative Edge**



**KAMSQX - Square Edge**



**KAMBSX - Base**

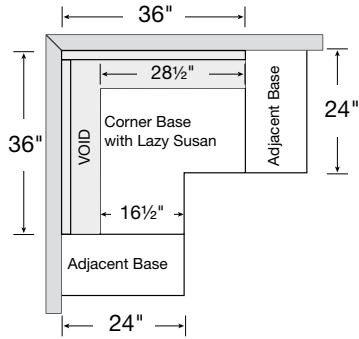
Model							Unfinished
	Java (JM)	Cognac (COG)	Hickory (NHK)	Oak (MO)	Gray (DV)	White (SW)	Unfinished (UF)
<b>KAOCMX</b>	592745	441041	477593	462111	1002405358	512034	1002759058 (Single)
<b>KAMDEX</b>	603074	446790	481578	469574	1002405362	576938	<b>N/A</b>
<b>KAMSQX</b>	599182	446235	479590	469557	1002405361	576579	<b>N/A</b>
<b>KAMBSX</b>	593021	441141	478060	464733	1002405365	569812	<b>N/A</b>



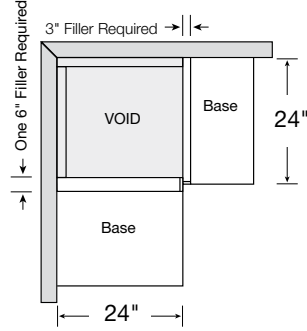
# Design and Layout Ideas

## How to Turn the Corner

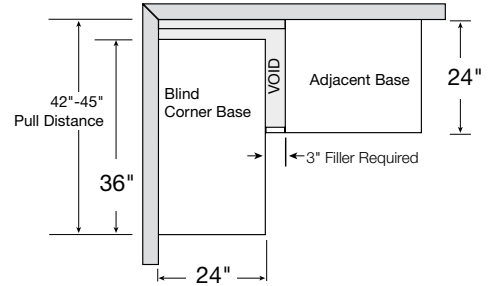
Lazy Susan Option



Block Out Option

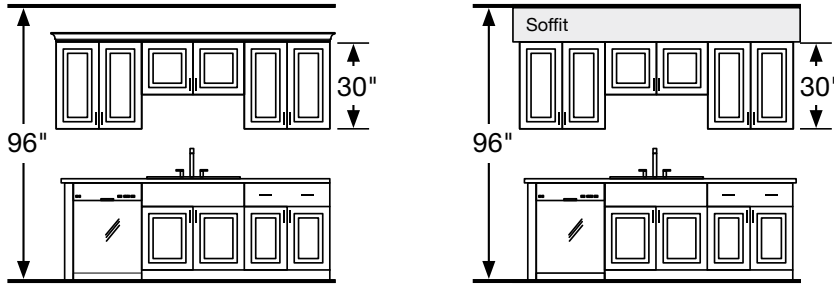


Blind Base Option

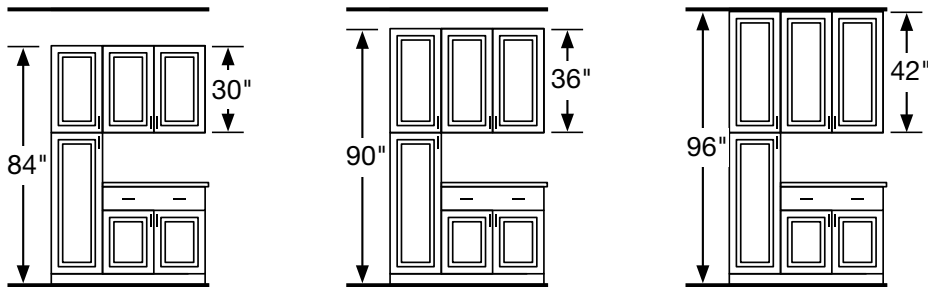


## Designing with Different Wall Cabinet Heights

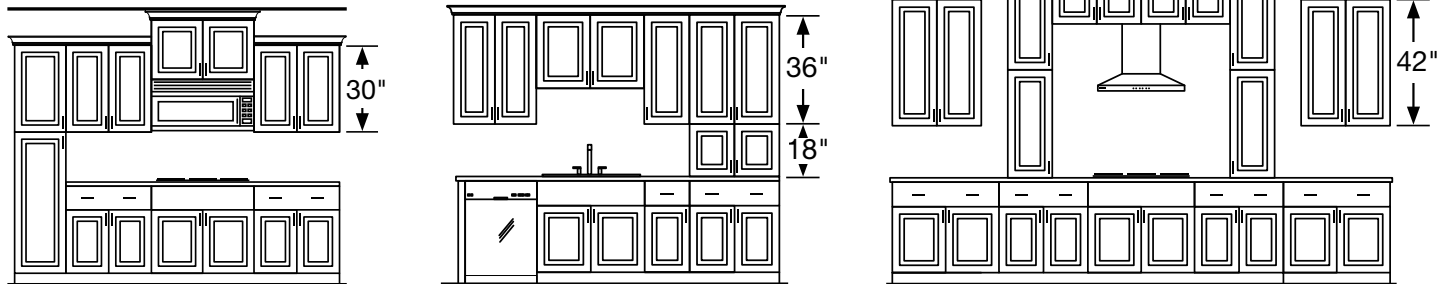
Typical layouts with 8-foot ceilings



Maximize storage with taller walls and pantries

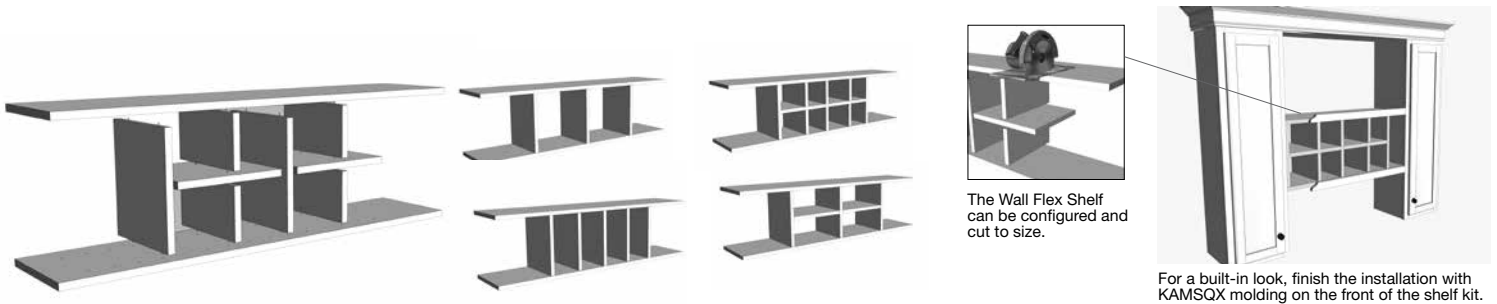


Achieve different looks



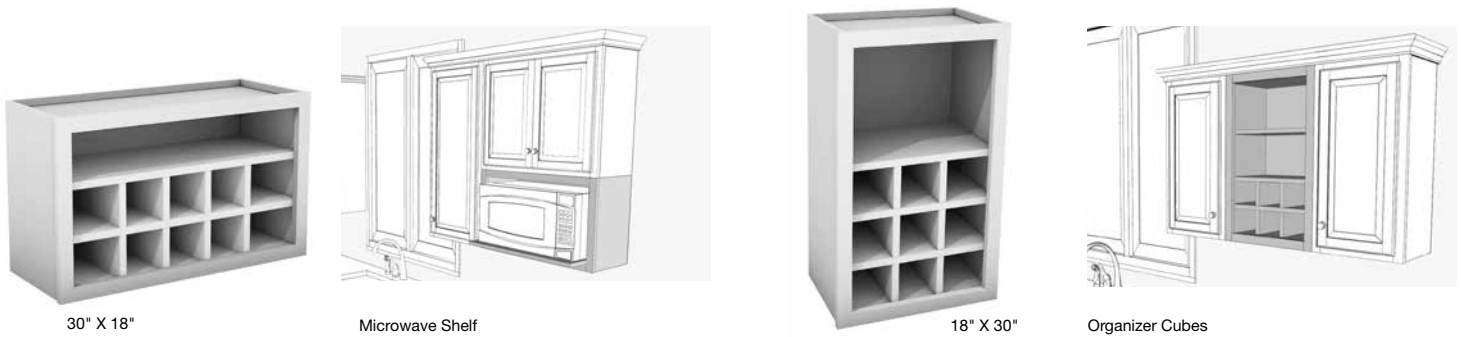
# Design and Layout Ideas

## Wall Flex Shelf



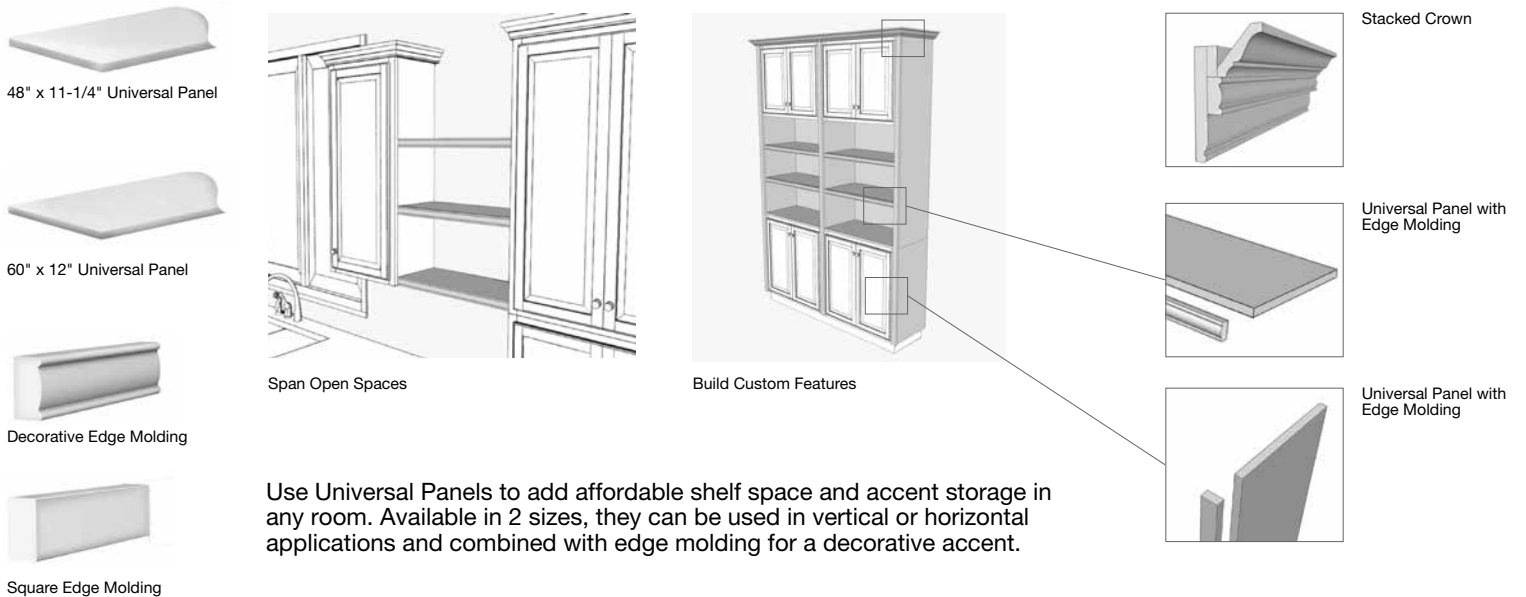
Use it your way. Ideal for wine, cookbooks or to showcase special items. This kit must be installed between two cabinets.

## Wall Flex Cabinets



These cabinets come with the shelves and dividers you need to configure your way. Our flex cabinets have finished matched interiors.

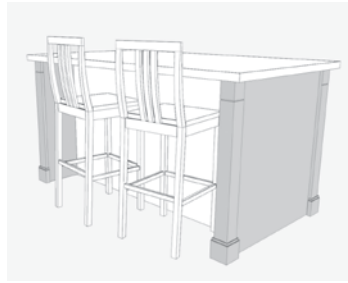
## Universal Panels and Molding



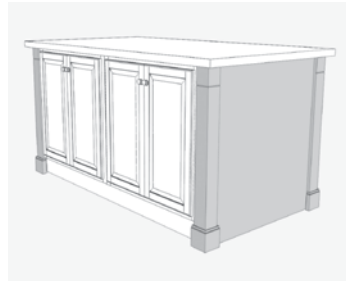
Use Universal Panels to add affordable shelf space and accent storage in any room. Available in 2 sizes, they can be used in vertical or horizontal applications and combined with edge molding for a decorative accent.

# Design and Layout Ideas

## Decorative Island Panel Kit



Island with Seating



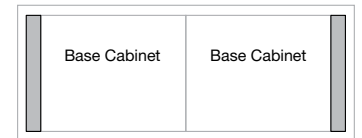
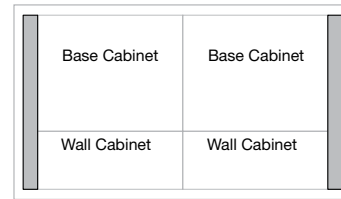
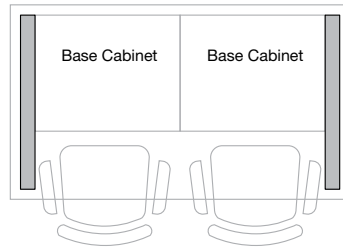
Island with Wall Cabinets



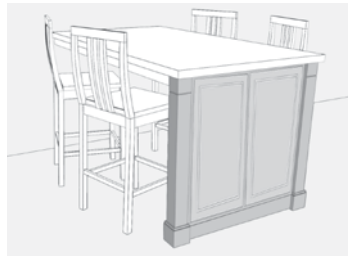
Base Depth Island

A great way to maximize storage or work space, island panels are a fast and easy way to build an island or a peninsula.

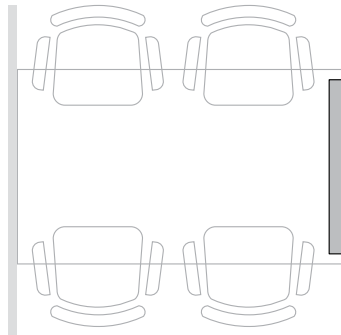
One post is shipped loose to allow the panel to be trimmed.



Panel kit can be cut to accommodate different depths

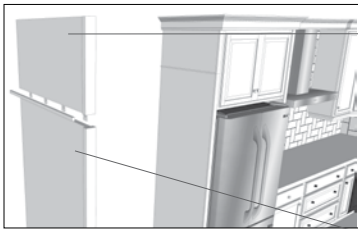


Seating Area with Countertop Support and Decorative End Panels. Decorative End Panels sold separately.

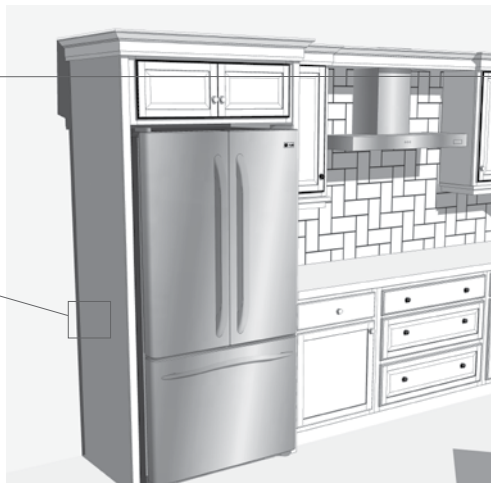


Use one decorative island panel to create a roomy peninsula for a convenient eating area in the kitchen.

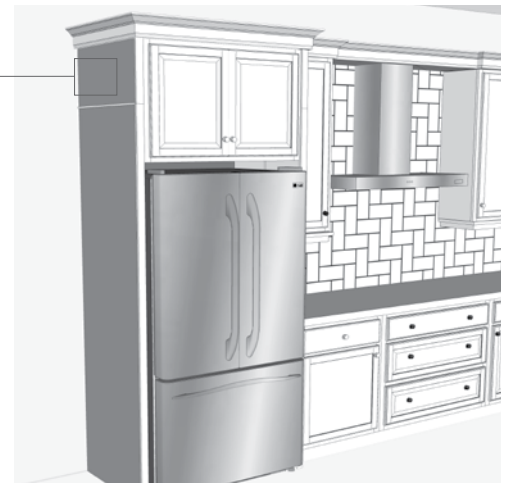
## Refrigerator End Panel Kit



Refrigerator End Panel Kit includes 84", 12" and 6" panels, and scribe molding; Combine to meet your needs.



Refrigerator End Panel Kit combined with KW361224 bridge cabinet.



Refrigerator End Panel Kit combined with KW362424 bridge cabinet.

Refrigerator End Panels must be installed both attached to a deep bridge cabinet, and anchored to studs in wall. Bridge Cabinet sold separately. Bridge cabinets are KW361224, KW361824 and KW362424.

# Important Information

## Care and Cleaning

- For normal spills, a damp cloth is sufficient. Remember to dry the surface immediately.
- White Thermofoil doors can be cleaned with most general purpose household cleaners.
- Wood doors can be cleaned with most general purpose household cleaners and polished with most furniture care products, not containing wax, petroleum solvents or silicones.
- Do not use caustic agents and/or abrasive scrubbers, or oven cleaners.
- Nicks and dings can be repaired with touch-up kits, available by calling RSI customer service department at (888) 578-4009.
- For stains that persist, flakes of Ivory soap diluted in warm water may be used. Remember to dry the surface immediately.
- Cabinets can be cleaned with a damp sponge or cloth using soapy water, or most general purpose household cleaners. Do not use any abrasive cleaner or scrubbers.
- Do not let liquids stay on the surface for a long period of time. The surface is water resistant, not waterproof.

## Repairing Door or Drawer Edge Scrapes

Use touch-up sticks available by calling RSI customer service department at (888) 578-4009 to fill in a scratch or nick. Remove excess residue leaving a smooth surface.

## Wood Characteristics

**Wood:** Wood species in all finishes will exhibit color changes when exposed to different types of light and environments over time. Such color changes are expected in Hampton Bay® brand cabinetry and are not defects. Graining differences, mineral streaks and color variations are expected in wood cabinetry. Hampton Bay cabinet door styles often exhibit these characteristics and such graining differences, mineral streaks and color variations are not defects.

**Maple:** Maple wood inherently has a characteristic known as “birdseye” or “fiddleback” pattern in the wood. When finished, it can have the appearance of a varied sheen, a splotchy appearance, or satiny look. This is the beauty of real maple and not a defect. In most cases it takes on a very pleasant look. Mineral streaks are also common and may appear darker when stained.

**Oak:** Oak is an open-grained hardwood with varying patterns ranging from straight grain to wide arcs. When stained, there will be a noticeable difference in the color shades between the open and closed grain areas of the wood. Wood can range from pink to a reddish brown.

**Hickory:** Hickory is a heavy hardwood which when finished has a warm, appealing appearance. Distinctive color streaks, combined with knots and other noticeable characteristics, make for a rustic appearance. While some parts may be clear and others extremely rustic, the characteristics of hickory are an inherent part of its charm and are considered to be a desirable part of the total look.

## Express Options® Order Processing

Special order Hampton Bay cabinet orders deliver direct to the store within 3 weeks. Some orders and store locations, including those outside the Continental U.S., may require more delivery time.

- Orders placed before 12pm PST M-F will be recognized at the end of the same business day
- Orders placed after 12pm PST M-F will not be recognized until the next business day
- Orders placed after 12pm PST F-Sun will be recognized on Monday (if not a holiday)
- Holidays are NOT included in the 3 week lead-time

## RTV Procedures

Hampton Bay® brand cabinets are manufactured by RSI Home Products. For any returns, please contact RSI customer service at (888) 578-4009.

# Important Information

## Express Options® Special Order Products – Vendor # 60071203

- Reorder products or parts for consumer without delay. RSI will expedite replacements as quickly as possible.
- If damage occurred during transit, have store receiving file a freight claim
- If you think the damage is a manufacturing or product defect, hold the cabinet for sales representative inspection. Reorder product for customer immediately. If defective, the store will be issued a destroy authorization.
- If the customer changes their mind or there is an ordering error, the store must contact customer service for an approved method of disposition. A 40% restocking fee will apply.
- If RSI made a shipping or order entry error, contact customer for disposition.
- Additional questions, call RSI customer service at (888) 578-4009.
- 5 cabinet minimum applies to all EO orders. Accessories not included in 5 cabinet minimum.

**Cancellations or Customer Return Requests: RSI WILL NOT ALLOW CANCELLATIONS OR CHANGES TO ORDERS AFTER 24 HOURS FROM RECEIPT OF THE STORE PURCHASE ORDER. ALL CANCELLATION REQUESTS MUST BE SUBMITTED FROM THE STORE VIA E-MAIL AT: [kitchens@rsihomeproducts.com](mailto:kitchens@rsihomeproducts.com). A cancellation number can only be obtained via email through [kitchens@rsihomeproducts.com](mailto:kitchens@rsihomeproducts.com). A purchase order is not cancelled until a cancellation number has been issued. If a customer chooses to return the product, a credit authorization must be obtained by contacting the RSI customer service department. A 40% restocking fee will be required on these types of requests.**

## In-Stock Products – Vendor # 71203

RSI Home Products RTV Policy is Code-2. RSI Representative inspection is required.

**Defective – Non Functioning:** Please hold for RSI Representative inspection and disposition.

**Defective – Functioning:** Please hold for RSI Representative inspection and disposition. If the product is still functioning, it should be logged as code-12 by the RTV associate and donated under Home Depot's "Gifts in Kind" (GIK) program, or RSI's "Materials Matter" (if store is not participating in GIK).

**Damages:** If the product is damaged, the store must file a freight claim with the Home Depot authorized carrier. The store determines whether the product can be sold with a markdown, donated or field destroyed.

## Warranty Details

- **Limited Lifetime Applies to All Finished Cabinetry**
- **1 Year Limited Applies to All Unfinished Cabinetry**

**What This Warranty Covers:** RSI Home Products, Inc. ("RSI") warrants its parts and products to be free of substantial defects in materials and workmanship from the original date of purchase under normal home use. This warranty is offered only to the original consumer purchaser and may not be transferred.

**What RSI Home Products Will Do Under The Warranty:** During the warranty period, RSI will repair or replace any part or product that proves to have substantial defects in materials or workmanship, or RSI will provide an equivalent replacement product. In keeping with our policy of continuous product improvement, RSI reserves the right to change specifications in design and materials without notice and with no obligation to retrofit products we previously manufactured.

**How State Law Applies:** This warranty gives you specific legal rights, and you may also have other rights that vary from state to state.

**IMPLIED WARRANTIES:** RSI DISCLAIMS ANY IMPLIED WARRANTY OF MERCHANTABILITY, AND THERE ARE NO WARRANTIES THAT EXTEND BEYOND THE DESCRIPTIONS ON THE FACE HEREOF. TO THE EXTENT THAT SUCH DISCLAIMER IS NOT VALID UNDER APPLICABLE LAW, ANY IMPLIED WARRANTY SHALL BE COEXTENSIVE IN DURATION WITH THIS WARRANTY.

**Wood Characteristics, Aging and Printing Limitations:** Because of the varying natural characteristics of wood and the effects of aging, product shown in displays and/or printed materials will not be an exact match to new cabinetry you will receive. Depending on the wood characteristics, the age of a sample and the environment of the showroom, samples will show some degree of variation from new product. In addition, you should not expect all doors, drawer fronts, trim or molding to match exactly in either finish or grain. Variation in wood is normal and unavoidable. In addition, it is not possible to exactly match our colors in printed materials. Therefore, you should view the actual samples when making your color selection.

# Important Information

**What This Warranty Does Not Cover:** This warranty does not cover any problems or damage which result from improper transportation, improper installation, mishandling, misuse, abuse, neglect, abnormal use, commercial use, improper maintenance, non-RSI repairs, accidents, or acts of God, such as hurricanes, fire, earthquakes or floods. This warranty and any applicable implied warranties do not cover incidental or consequential damages arising from any defects in the product, such as labor charges for installation or removal of the product or any associated products. This warranty does not cover defects or damage caused by normal wear & tear, alterations, environmental conditions, humidity absorption, or mold. In addition, variations in wood grain, finish color, aging or other natural wood and stain characteristics are not considered defects and are not covered by this warranty. Some states do not allow the exclusion or limitation of incidental or consequential damages, so the above limitation or exclusion may not apply to you.

**How to Obtain Warranty Service:** If you need replacement parts or would like to make a warranty claim, please contact an RSI Customer Service Representative by mail or telephone at (888) 578-4009. All warranty claims must include the model number of the product, copy of the original receipt and the nature of the problem. In addition, RSI may at its discretion require inspection of the installation site or authorize the prepaid return of the claimed defective part. Merchandise not pre-approved for return will not be accepted and the associated claim not accepted.

**Products should be examined for defects prior to installation. This warranty also does not cover labor charges for installation or removal of the product or any associated products. If upon inspection you find our product has a damaged or missing part, it may not be necessary to return the unit to the store of purchase. Please contact RSI customer service to possibly obtain a replacement part.**

## IMPORTANT HEALTH NOTICE:

Some of the building materials used in this home (or these building materials) emit formaldehyde. Eye, nose, and throat irritation, headache, nausea and a variety of asthma-like symptoms, including shortness of breath, have been reported as a result of formaldehyde exposure. Elderly persons and young children, as well as anyone with a history of asthma, allergies, or lung problems, may be at greater risk. Research is continuing on the possible long-term effects of exposure to formaldehyde.

Reduced ventilation may allow formaldehyde and other contaminants to accumulate in the indoor air. High indoor temperatures and humidity raise formaldehyde levels. When a home is to be located in areas subject to extreme summer temperatures, an air-conditioning system can be used to control indoor temperature levels. Other means of controlled mechanical ventilation can be used to reduce levels of formaldehyde and other indoor air contaminants.

If you have any questions regarding the health effects of formaldehyde, consult your doctor or local health department.

**WARNING:** This product can expose you to chemicals including Wood Dust which are known to the state of California to cause cancer. For more information go to [www.P65Warnings.ca.gov/products](http://www.P65Warnings.ca.gov/products).