

# WEB HORIZONTAL LIFELINE

Part # 04662

## Instruction Manual



Product Specific Applications	2
Worker Classifications	2
Applicable Safety Standards	2
Permitted User Weight	2
Limitations	3
Compatibility	3
Installation and Use	3
Specifications	5
Materials	5
Safety Information	6
Labels	7
Diagrams	8
Inspection	9
Inspection Log	10

- ✘ Do not throw instructions away.
- ⚠ Read and understand instructions before using this equipment.

## Product Specific Applications



**Fall Arrest:** May be used to support a **MAXIMUM 2 Personal Fall Arrest System (PFAS)** for use in Fall Arrest applications. Structure must be capable of withstanding a minimum load of 5,000 lb (22,2 kN). Maximum free fall is 6 ft (1,8 m), or up to 12 ft (3,6 m) if used in combination with equipment explicitly certified for such use.

**D-rings: Dorsal**



**Travel Restraint:** May be used in Travel Restraint applications. Restraint systems prevent workers from reaching the leading edge of a fall hazard. Always account for fully deployed length of lanyard/SRL. Structure must withstand loads applied in the directions permitted by the system of at least 1,000 lb (4,4 kN). No free fall is permitted. Restraint systems may only be used on surfaces with slopes up to 4/12 (vertical/horizontal).

**D-rings: Dorsal, Sternal, Hip (Pairs Only)**

---

## Applicable Safety Standards

Meets or exceeds:

- **OSHA 1926.502**
- **OSHA 1910.140**

## Worker Classifications

- **Qualified Person:** A person with an accredited degree or certification, and with extensive experience or sufficient professional standing, who is considered proficient in planning/reviewing the conformity of fall protection and rescue systems.
- **Competent Person:** A highly trained and experienced person who is **ASSIGNED BY THE EMPLOYER** to be responsible for all elements of a fall safety program, including, but not limited to, its regulation, management, and application. A person who is proficient in identifying existing and predictable fall hazards, and who has the authority to stop work in order to eliminate hazards.
- **Authorized Person:** A person who is assigned by their employer to work around or be subject to potential existing fall hazards.

**It is the responsibility of a Qualified or Competent person to supervise the job site and ensure all applicable safety regulations are complied with.**

---

## Permitted User Weight

- **User weight range (per user, including all clothing, tools, and equipment) is:**
  - One User - 100-420 lb (45-191 kg)**
  - Two users - 100-310lb (45-141 kg)**
- **Structure must be capable of withstanding a minimum load of 5,000 lb (22,2 kN).**

Always defer to applicable connecting device to determine permitted worker weight capacity range for complete system.

## Limitations

**Fall Clearance:** There must be sufficient clearance below the work surface to arrest a fall before the user strikes the ground or an obstruction. When calculating fall clearance, account for a MINIMUM 2 ft (610 mm) safety factor, deceleration distance, user height, length of connecting devices, harness stretch, free fall, and all other applicable factors.

See Diagram A on page 8.

**Swing Falls:** Prior to installation or use, make considerations for eliminating or minimizing all swing fall hazards. Swing falls occur when the anchor is not directly above the location where a fall occurs. Always work as close to in-line with the anchor point as possible. Swing falls significantly increase the likelihood of serious injury or death in the event of a fall.

---

## Compatibility

When making connections to the harness, eliminate all possibility of roll-out. Roll-out occurs when interference between a connector and the attachment point causes the connector gate to unintentionally open and release.

All connections must be selected and deemed compatible with the harness by a Competent Person.

All connector gates must be self-closing, self-locking, and withstand a minimum load of 3,600 lb (16 kN).

---

## Installation and Use

**⚠ WARNING!** For use in personal fall protection systems only. NEVER use for material handling and/or lifting.

**⚠ Do not install at any angle other than horizontal.**

**⚠ Do not use in combination with pass-through anchors.**

**⚠ Do not use for Fall Arrest and Fall Restraint simultaneously.**

Ensure all PFAS equipment is selected and deemed compatible by a Competent Person.

Determine desired location for Web HLL; ensure location is free of debris, rot, decay, cracking, and hazardous materials. Eliminate or minimize all risk of swing fall.

---

### ■ Step 1

Determine intended system length and anchor point installation locations. Anchor points must be directly across from each other, so that Web HLL will be completely level and not slope in any way when installed.

### ■ Step 2

Install Cross Arm Straps around compatible structural anchor points, as determined by a Competent Person.

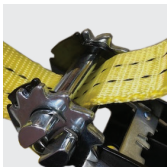
**Note:** it is also permitted to connect Web HLL to anchorage connectors other than Cross Arm Straps, provided applicable anchorage connectors are deemed compatible with Web HLL by Competent Person.

### ■ Step 3

Slide O-rings onto webbing before attaching Ratchet Assembly.

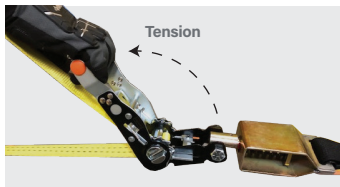
#### ■ Step 4

Thread free end of Web Assembly through slotted drum as shown. Attach Ratchet assembly to one anchor point and Web Assembly to another anchor point. Pre-tension system by pulling webbing through drum until taut and slack is eliminated. Failure to take up excess slack may result in webbing damage and prevent ratchet from locking properly.



#### ■ Step 5

Tension Web HLL to final position with ratchet. Pull towards web to tighten, push back toward shock absorber, and repeat. Hold rubber grip of ratchet only. DO NOT grip ratchet release lever, which is only used during removal.



#### ■ Step 6

Web HLL is properly tensioned when green tension indicator is visible next to green arrow on label. DO NOT USE if either red indicator aligns with green arrow on label. ALWAYS inspect tension indicator before, and during, each use to ensure tension is maintained.



#### ■ Step 7

Remove ratchet handle by fully pulling up on release lever and lifting away from Ratchet Assembly. DO NOT pull back on handle, as this may accidentally release tension on Web HLL.



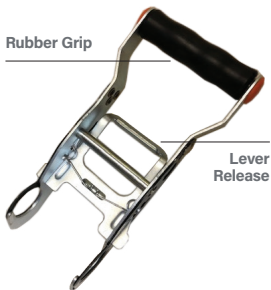
#### ■ Step 8

Attach complete and compatible PFAS to HLL O-ring. Maximum 1 connection per O-ring. Connections include attachment via snap hook, scaffold hook, and carabiner.

#### ■ Step 9

To uninstall, first reattach ratchet handle. Then, pull up partially on ratchet release lever until bottom of release no longer rests in ratchet channel. Then, pull down fully on handle until tension is released.

### Tensioner Ratchet Handle



## Specifications

### Web Horizontal Lifeline

Part #	Length	Contents*
04662	65 ft (19,9 m)	O-rings (2), Cross Arm Straps (2), Carabiners (2), Tensioner, Tether, Carrying Bag



## Materials

Polyester, galvanized steel,  
and zinc-plated steel.

### **IMPORTANT!**

\*Web HLL is also provided with Bungee Tether, part #: BNGEXT1C10XT-R.

Dropped object prevention is an essential component of any jobsite safety plan.

Always adhere to all provided Bungee Tether instructions.

**Bungee Tether is intended to be used in combination with removable ratchet handle to eliminate accidental drops or misplacement.**

## Safety Information

**▲ WARNING!** Failure to understand and comply with safety regulations may result in serious injury or death. Regulations included herein are not all-inclusive, are for reference only, and are not intended to replace a Competent Person's judgment or knowledge of federal or state standards.

**▲ CAUTION!** Understand the definitions of those who work near, or who may be exposed to, fall hazards.

**▲ WARNING!** Use of equipment in unintended applications may result in serious injury or death. Maximum 1 attachment per O-ring connection point.

Do not alter or misuse equipment.

Workplace conditions, including, but not limited to, corrosive chemicals, electrical shock, sharp objects or edges, machinery, flame/high heat, abrasive or uneven surfaces, UV exposure, and severe or prolonged weather conditions, must be assessed by a Competent Person (CP) before fall protection equipment is selected. The presence of any/all of these conditions may have negative effects on product performance or service lifetime.

The analysis of the workplace must anticipate where workers will be performing their duties, the routes they will take to reach their work, and the potential and existing fall hazards they may be exposed to. Fall protection equipment must be chosen by a C.P. Selections must account for all potential hazardous workplace conditions. All fall protection equipment should be purchased new and in an unused condition.

Fall protection systems must be designed and used in compliance with all safety regulations and must be selected and installed under the supervision of a CP. Forces applied to anchors must be calculated by a CP.

Harnesses and connectors selected must be compliant with manufacturer's instructions, and must be of compatible size and configuration. Snap hooks, carabiners, and other connectors must be selected and applied in a compatible fashion. All risk of disengagement must be eliminated. All snap hooks and carabiners must be self-locking and self-closing, and must never be connected to each other.

**See Diagram B on page 8.**

A pre-planned rescue procedure in the case of a fall is required. The rescue plan must be project-specific. The rescue plan must allow for employees to rescue themselves, or provide an alternative means for their prompt rescue to minimise post fall suspension time. Store rescue equipment in an easily accessible and clearly marked area.

Training of Authorised Persons (APs) to correctly erect, disassemble, inspect, maintain, store, and use equipment must be provided by a CP. Training must include the ability to recognise fall hazards, minimise the likelihood of fall hazards, and the correct use of personal fall arrest systems.

NEVER use fall protection equipment of any kind to hang, lift, support, or hoist tools or equipment, unless explicitly certified for such use.

Equipment subjected to forces of fall arrest must immediately be removed from use.

Age, fitness, and health conditions can seriously affect the worker should a fall occur. Consult a doctor if there is any reason to doubt a user's ability to safely withstand fall arrest forces or perform set-up of equipment. Pregnant women and minors MUST NOT use this equipment.

Physical harm may still occur even if fall safety equipment functions correctly. Sustained post-fall suspension may result in serious injury or death. Use trauma relief straps to reduce the effects of suspension trauma.

## Labels

1



1

Guardian  
HLL Web Horizontal Lifeline  
Meets and exceeds Requirements of OSHA 1910.140 & 1926.502

2



2

User Weight Capacity (per user - incl. all equip.):  
1 User: 100-420 lb (45-191 kg) / 2 Users: 100-310 lb (45-141 kg)

All PFAS equipment must be selected and deemed compatible by a Competent Person. All installation, set-up, and use of HLL must be done under supervision of a Qualified Person. Refer to instructions for compatible connections and installation procedure. User must inspect prior to EACH use. Competent Person must complete formal inspection every 12 months. Competent Person to inspect and initial. Always avoid all hazards, including, but not limited to, chemicals, corrosive substances, excessive heat, electric shock, sharp and abrasive edges and surfaces.

Product lifetime is indefinite, as long as product passes all inspection requirements. If equipment fails inspection **IMMEDIATELY REMOVE FROM SERVICE**.

Materials: Polyester, galvanized steel, and zinc-plated steel.  
Prior to use, read and understand all manufacturer's instructions provided with equipment at time of shipment.  
Designed and Assembled in the UK

**DO NOT REMOVE LABELS**  
 TENSION INDICATOR

3

Guardian  
PART#: 04662- WEB ASSEMBLY  
1-800-466-6385  
Designed & Engineered in the U.K.  
TEMPORARY LIFELINE / MAX 2 PERSON USE ONLY  
Material: Polyester  
1 User Capacity: 100-420 lb per User (45-191 kg)  
2 User Capacity: 100-310 lb per User (45-141 kg)  
Remove from service if damaged, worn or excessively soiled.  
Read and follow manufacturer's instructions included at time of shipment. Ensure indicator aligns with green zone for correct tension. See instructions for further details.  
Date of manufacture: / Length: / Lot No: / Serial No:  
Compliant with: OSHA 1910.140 & OSHA 1926.502

## Engraved on Tensioner Housing:

SERIAL NUMBER:  
D.O.M:  
MAX NO. OF USERS:  
MAX USER WEIGHT:  
PART NUMBER:  
LOT NUMBER:

3



## TEMPORARY LIFELINE

MAX 2 PERSON USE ONLY  
1 User Capacity: 100-420 lb per User (45-191 kg)  
2 User Capacity: 100-310 lb per User (45-141 kg)  
Remove from service if damaged, worn or excessively soiled.  
Read and follow manufacturer's instructions included at time of shipment. Ensure indicator aligns with green zone for correct tension. See instructions for further details.

Date of manufacture:  
Length:  
Lot No:  
Serial No:

Compliant with:  
OSHA 1910  
OSHA 1926  
Subpart M

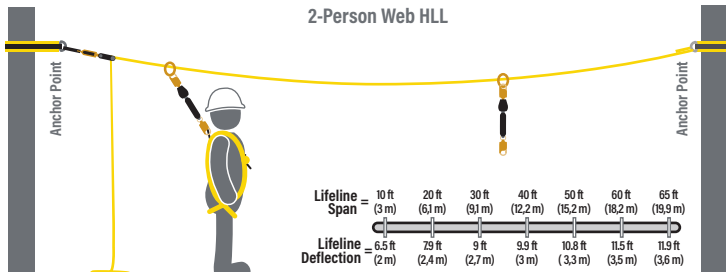


00009-REV A

## Diagram A - Fall Clearance

Fall clearance calculation shown below is an example ONLY.

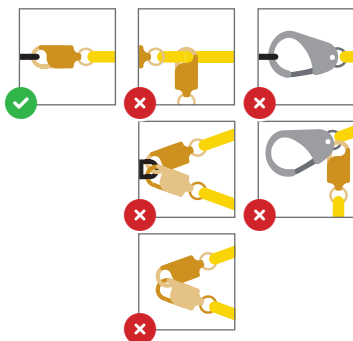
### 2-Person Web HLL



**Note:** In restraint applications, deflection is approximately 2% of the span length when tensioned correctly.

- Lifeline Deflection
- Free Fall
- Maximum Arrest Distance
- Harness Stretch
- Safety Factor
- Swing Fall

## Diagram B - Connections



**⚠ WARNING!** Eliminate Swing Fall whenever possible! If swing fall exists, always account for additional fall clearance.

## Inspection

### See Inspection Log on page 10

Prior to EACH use, inspect the Web HLL, lifeline, and connection points for signs of deficiencies, including, but not limited to, corrosion, deformation, pits, burrs, rough surfaces, sharp edges, cracking, rust, paint buildup, excessive heating, alteration, broken stitching, fraying, and missing or illegible labels. Careful inspection should be made at location where ratchet contacts web lifeline; excessive turns of ratchet drum may accelerate webbing wear. If webbing shows signs of wear, please replace only with Guardian-supplied webbing.

IMMEDIATELY remove Web HLL from service if defects or damage are found, or if exposed to forces of fall arrest.

If inspection shows distance between edge of black webbing on shock-pack is greater than 5 cm, the product has been exposed to excessive force and must not be used. See image below.

Any visual evidence of deployment is a primary indicator of excessive load - IMMEDIATELY remove Web HLL from service.



Ensure that applicable work area is free of all damage, including, but not limited to, debris, rot, rust, decay, cracking, and hazardous materials. Ensure that selected work area will support the application-specific minimum loads set forth in this instruction manual. Work area **MUST** be stable.

CP other than user must complete thorough inspection at least every 12 months or every 3 months if used in offshore or corrosive environments. In addition local regulations in regard to inspection must be followed. CP to inspect and initial. This inspection log must be specific to one Web HLL. Separate inspection logs must be used for each Web HLL. All inspection records must be made visible and available to all users at all times. If equipment fails thorough inspection it must be immediately from service and discarded or repaired.

During inspection, consider all applications and hazards the Web HLL has been subjected to. Ensure that device certification is current before use, this device must only be repaired by a Competent Person authorised by the manufacturer.





Notes:

---



## USA

607 East Sam Houston Parkway South  
Suite 800  
Pasadena, TX 77503  
800 466 6385  
customer.service@guardianfall.com

## UK

New Road, Sheerness  
Kent ME12 1PZ  
United Kingdom  
+44 (0) 1795 580 333  
enquiries@guardianfall.com

## CANADA

580 Notre Dame Avenue, Unit 16  
Sudbury, ON  
P3C 5L2  
800 466 6385  
customer.service@guardianfall.com

**WARRANTY:** Guardian warrants to Buyer that all products are free from defects in material, workmanship, and design (if a Supplier-responsible design), however this warranty does not cover conditions resulting from normal wear and tear, neglect, abuse, accident or otherwise. Guardian's obligations under this warranty apply for the lifetime of the products and are limited to the replacement of product only. This warranty is not transferable to any other Guardian service and does not apply to product that is resold after having been put into service. No other person, firm, entity, or the like is authorized to assume or assign for Guardian any other liability in connection with the sale or use of Guardian's products. Furthermore, this warranty is void if any product is changed or altered in any way, or if the product is used in a manner other than for which it is intended. There are no implied warranties of merchantability or fitness for a particular purpose, which are specifically disclaimed.