

GRIP-RITE® THE R.E.D. SYSTEM™

Grip-Rite® Packaging	2
Fastener Label Color System	3
Collated Fastener Icons	3
R.E.D. Promise™	4
Grip-Rite® R.E.D. System™	26

FRAMING

21° Plastic Strip Round Head Nailer	6
30° Paper Tape Clipped Head Nailer	7
3-1/2" Coil Framing Nailer	8
1-1/2" Metal Connector Nailer	9
1-1/2" Metal Connector Nailer	10
2-1/2" Metal Connector Nailer	11
16d Mini Air Nailer "The Original"	12

ROOFING/SIDING

Coil Roofing Nailer	14
15° Coil Siding & Fencing Nailer	15
0° Coil Siding & Fencing Nailer	16

STAPLERS

Plastic Cap Stapler	18-19
16 Gauge Construction Stapler	20
18 Gauge Finish Stapler	21
Tacker Staplers	22

FINISH

16 Gauge Finish Nailer	24
18 Gauge Brad Nailer	25

COLLATED FASTENERS**FRAMING**

Collated Fasteners	28-48
15° Wire Coil Nails	28
Grip-Rite® Fastener I.D. System	29
21° Plastic Strip Round Nails	30-31
28° Plastic Strip Clipped Head Nails	32
28° Wire Weld Clipped Head Nails	32
28° Wire Weld Offset Head Nails	33
30° Paper Tape Clipped Head Nails	34
30° Paper Tape Offset Round Head Nails	35
33° Paper Tape Joist Hanger Nails	36
33° Plastic Strip Joist Hanger Nails	36

SIDING/FENCING

0° Plastic Sheet Coil Nails	37
15° Plastic Sheet Coil Nails	37
15° Wire Weld Coil Nails	38

ROOFING

Coil Roofing Nails	39
--------------------------	----

STAPLES

Laser Welded Plastic Cap & Staples	39
18 Gauge "L"-style Narrow Crown Staples	40
18 Gauge "SX"-style Narrow Crown Staples	40
16 Gauge "N"-style Medium Crown Staples	41
16 Gauge "76"-style Medium Crown Staples	41
16 Gauge "GS"-style Medium Crown Staples	42
16 Gauge "BCS"-style Medium Crown Staples	42
15-1/2" Gauge Flooring Staples	42
16 Gauge "BCS"-style Wide Crown Staples	43
16 Gauge "GSW"-style Wide Crown Staples	43
16 Gauge "P"-style Wide Crown Staples	43

COLLATED FASTENERS (CONT.)

"A11"-style Tacker Staples	44
"50"-style Tacker Staples	44
"A19"-style Tacker Staples	44
"SHCR"-style Tacker Staples	44
"STCR"-style Tacker Staples	45
16 Gauge "L"-Hardwood Flooring Cleats	45
18 Gauge "L"-Hardwood Flooring Cleats	45
Concrete T-Nails	45

FINISH

15 Gauge "DA"-style Angled Finish Nails	46
15 Gauge "FN"-style Angled Finish Nails	46
16 Gauge Straight Finish Nails	47
16 Gauge Angled Finish Nails	47
18 Gauge Brad Nails	48
23 Gauge Headless Micropins	48

COMPRESSORS

1 Gallon Ultra Quiet Compressor	50
2 Gallon Ultra Quiet Compressor	51
4 Gallon Ultra Quiet Compressor	52
9 Gallon Electric Wheelbarrow Compressor	53
9 Gallon Gas Compressor 5.5 HP	54
9 Gallon Gas Compressor 9HP	55
Grip-Rite® Service Network	56

ACCESSORIES/FITTINGS

Air Hoses	58-59
Fittings & Other Accessories	60-63
All Season Tool & Compressor Oil	64

SERVICE

Service & Repair Kits	65
-----------------------------	----

SAFETY

Safety	66
--------------	----

WARRANTY

Tool & Compressor Warranties	66
------------------------------------	----

FAST STATS

Compressor Fast Stats	67
Pneumatic Tool Fast Stats	68-69



21° Plastic Strip Framing Nailer
GRTR83

4 Gallon Ultra Quiet
Compressor
GR25040LR

THE R.E.D. SYSTEM

Collated Fastener Icon System

Our collated fastener icon system is designed to assist with finding and selecting the right type of fastener for each pneumatic tool. The system features easy-to-read icons that describe the fastener with a corresponding specific color code. All Grip-Rite® fasteners and pneumatic tools feature these icons on the packaging and body of the tool, allowing for an easy match of fasteners with tools.

How to Use

Color coding makes for a quick and easy way to match fastener to pneumatic tool



Descriptive text identifies overall fastener category



Fastener gauge, degree of collation, or specialty fastener abbreviation are quick identifiers



Icon Key

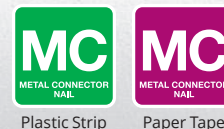
Collated Framing Fasteners



Wire

Plastic

Collated Joist Hanger Fasteners



Plastic Strip

Paper Tape

Collated Roofing Fasteners



Collated Finishing Fasteners



"FN" style

"DA" style

Collated Siding/Fencing Fasteners



Plastic

Wire

Plastic



"BCS" style

"P" style

"GSW" style

"L" style

"SX" style

"76" style

"GS" style

"N" style

"BCS" style

Collated Hammer Tacker Staples



Collated Flooring Fasteners



800-676-7777
www.grip-rite.com

Label Color System

The life expectancy of a project can be directly impacted by the type of finish on the fasteners used. Grip-Rite's color-coded label system makes it easy to select the optimal fastener finish for every jobsite application. Look for the color band on the label for overall application categories.



General Construction — Bright Coated/Electrogalvanized

For applications with the least amount of long term exposure to the elements or where corrosion resistance is not a concern such as interior framing, concrete forming and scaffolding.



Outdoor Construction — Hot Dipped Galvanized/Exterior Galvanized

For applications that require additional corrosion protection and long term exposure to the elements such as sheds, exterior trim, decking, fencing, siding and with treated lumber. Exterior Galvanized meets or exceeds ASTM specifications.



Roofing — Electrogalvanized/Hot Dipped Galvanized

For applications that require the fastening of roofing and siding materials to the exterior of buildings such as asphalt roof shingles, felt, metal roofing, wood and vinyl siding.



PrimeGuard MAX® — Stainless Steel

Fasteners to stand the test of time. Certified 100% stainless steel all the way through, for maximum corrosion resistance. Not coated, not polished, not finished with a little paint. Solid stainless steel, for real tough jobs.

Color-coded icons clearly match the right fasteners to the right tools



Plastic Strip Round Head
3" x .131"
Smooth Shank

Clearly identifies the type of fastener and size

Quantity

2,000 Pcs.
Pzas

Labels feature full-color, easy-to-see product photos



Fastener SKU

Color label system clearly identifies the type of fastener finish

Bright Coated



GR014L

Cabeza redonda en
banda plástica
75 mm x 3.33 mm • Espiga lisa
Brillante revestido





R.E.D. PROMISE™

At **Grip-Rite®**, we know the value of a promise.

Ours is that we stand behind the **R.E.D. System™** with the best guarantees in the business.

The **R.E.D. Promise™** is our commitment to your up time, built on the most comprehensive service program in the industry: an unrivaled service network, an industry-leading **7 year warranty** and a **90 day satisfaction guarantee** on tools that includes soft parts and driver blades and of course, the **Grip-Rite® Jam-Free guarantee** on collated fasteners. With nearly 700 service locations across the United States, the **R.E.D. Promise™** gives you the confidence of knowing we're here to help you **get the job done right!**

At **Grip-Rite®, WE BUILD AMERICA™** with you, every single day.



800-676-7777
www.grip-rite.com

WE BUILD AMERICA™

Framing



21° PLASTIC STRIP ROUND HEAD FRAMING NAILER

HEIGHT: 12.40" | LENGTH: 21.70" | WIDTH: 4.50" | WEIGHT: 7.30 LB.

21°

ROUND HEAD NAIL



Framing, decking, fencing, sheathing, siding, subfloors and trusses.

FEATURES & BENEFITS

- "True Drive" Technology™ – provides fast and consistent nail driving
- Dual Loading Magazine
- Load tool from either top or back of magazine
- 90 day soft parts warranty
- R.E.D. Promise™



Short Body Design

Fits easily between 16" O.C. studs

Lightweight and Excellent Balance

Allow all day use without user fatigue

Rotating Heavy Duty Metal Rafter Hook

Hang tool out of the way when both hands are needed

Swivel Plug included

Allows increased tool maneuverability



Dry Fire Lockout

Notifies user when to reload
Prevents potential damage to tool

Selectable Trigger

Switch easily and quickly between sequential and bump fire mode

GRTR83/SPECIFICATIONS

Firing mode	Selectable trigger
Magazine capacity	75
Operating pressure	70-120 PSI
Fastener type	21° Round head framing nails
Collation	Plastic
Fastener range	2" to 3-1/4"
Fastener diameter	0.113" to 0.148"



800-676-7777
www.grip-rite.com



30°
CLIPPED OR FULL
HEAD NAIL

30° PAPER TAPE FRAMING NAILER

HEIGHT: 13.50" | LENGTH: 21.70" | WIDTH: 4.50" | WEIGHT: 7.30 LB.

Framing, decking, fencing, sheathing, siding, subfloors and trusses.

FEATURES & BENEFITS

- "True Drive" Technology™ – provides fast and consistent nail driving
- 90 day soft parts warranty
- R.E.D. Promise™



Short Body Design

Fits easily between 16" O.C. studs

Lightweight and Excellent Balance

Allow all day use without user fatigue

Rotating Heavy Duty Metal Rafter Hook

Hang tool out of the way when both hands are needed

Swivel Plug included

Allows increased tool maneuverability



Selectable Trigger

Switch easily and quickly between sequential and bump fire mode

Dry Fire Lockout

Notifies user when to reload and prevents potential damage to tool

GRTFC83/SPECIFICATIONS	
Firing mode	Selectable trigger
Magazine capacity	80
Operating pressure	70-120 PSI
Fastener type	30°-34° Offset round & clipped head nails
Collation	Paper
Fastener range	2" to 3-1/4"
Fastener diameter	0.113" to 0.131"



3-1/2" COIL FRAMING NAILER

HEIGHT: 14" | LENGTH: 12.20" | WIDTH: 5.25" | WEIGHT: 6.60 LB.

15°

COIL SIDING NAIL



Framing, sheathing, decking, sub-flooring, decks, pallets, crates and trusses.

FEATURES & BENEFITS

- 90 day soft parts warranty
- R.E.D. Promise™



360° tool free air exhaust

Directs air exhaust away from user or work surface when needed

Selectable Trigger

Switch easily and quickly between sequential and bump fire mode

Belt hook included

Hang tool from belt when both hands are needed

Swivel Plug included

Allows increased tool maneuverability

Shoots both Wire Weld and Plastic sheet

Use the correct fastener for the application



GRTC90/SPECIFICATIONS

Firing mode	Selectable trigger
Magazine capacity	200-300
Operating pressure	80-120 PSI
Fastener type	15° Round head coil framing nails
Collation	Wire and plastic sheet
Fastener range	Wire 1-3/4" to 3-1/2" Plastic 1-3/4" to 3"
Fastener diameter	0.099" to 0.148"



800-676-7777
www.grip-rite.com



1-1/2" METAL CONNECTOR NAILER

HEIGHT: 9.50" | LENGTH: 12.30" | WIDTH: 3.50" | WEIGHT: 4.40 LB.

Metal hangers, seismic & hurricane ties, anchors and connector straps.

FEATURES & BENEFITS

- Multi-Blow functionality prevents nail ricochet for safer usage
- 90 day soft parts warranty
- R.E.D. Promise™



GR150/SPECIFICATIONS	
Firing mode	Push (multi-blow)
Magazine capacity	30
Operating pressure	100-120 PSI
Fastener type	30°-34° Metal connector nails
Collation	Paper or plastic
Fastener range	1-1/2"
Fastener diameter	0.131" to 0.148"



1-1/2" METAL CONNECTOR NAILER

HEIGHT: 10.50" | LENGTH: 14.70" | WIDTH: 4.20" | WEIGHT: 4.40 LB.



Metal hangers, seismic & hurricane ties, anchors and connector straps.

FEATURES & BENEFITS

- 90 day soft parts warranty
- R.E.D. Promise™



Short Body Design

- Perfect for tight spaces
- Fits easily between 16" O.C. studs

360° tool free air exhaust

Directs air exhaust away from user or work surface when needed

Belt hook included

Hang tool from belt when both hands are needed



Nail tip serves as shooting guide

Precision nail placement reducing the chance of mis-fire



GRSB150/SPECIFICATIONS

Firing mode	Sequential
Magazine capacity	33
Operating pressure	80-120 PSI
Fastener type	30°-34° Metal connector nails
Collation	Paper
Fastener range	1-1/2" x 0.131/0.148"



800-676-7777
www.grip-rite.com



2-1/2" METAL CONNECTOR NAILER

HEIGHT: 14" | LENGTH: 13.60" | WIDTH: 4.20" | WEIGHT: 5.70 LB.

Metal hangers, seismic and hurricane ties, anchors and connector straps.

FEATURES & BENEFITS

- 90 day soft parts warranty
- R.E.D. Promise™



360° tool free air exhaust
Directs air exhaust away from user or work surface when needed

Belt hook included
Hang tool from belt when both hands are needed



Nail tip serves as shooting guide
Precision nail placement reducing the chance of mis-fire

Shoots both 1-1/2" and 2-1/2" Metal Connector Nails
One tool for all metal connector applications

GRSB250/SPECIFICATIONS	
Firing mode	Sequential
Magazine capacity	33
Operating pressure	80-120 PSI
Fastener type	30°-34° Metal connector nails
Collation	Paper
Fastener range	1-1/2" x 0.131/0.148" to 2-1/2" x 0.148/0.162"



16D MINI AIR NAILER

HEIGHT: 2.80" | LENGTH: 4" | WIDTH: 2.20" | WEIGHT: 1.10 LB.

Drives loose nails into tight spaces.

FEATURES & BENEFITS

- Original mini palm nailer to the market-trend setting proven performer
- 90 day soft parts warranty
- R.E.D. Promise™



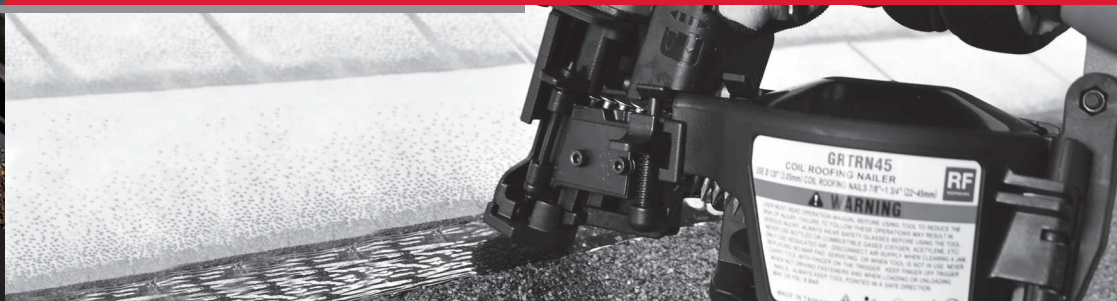
GRTMP16/SPECIFICATIONS

Firing mode	Push (multi-blow)
Operating pressure	80-110 PSI
Fastener type	Hand drive nails
Fastener range	Up to 16d (3-1/2")



800-676-7777
www.grip-rite.com

Roofing/Siding



COIL ROOFING NAILER

HEIGHT: 10.90" | LENGTH: 10.50" | WIDTH: 3.20" | WEIGHT: 5.04 LB.



Roofing installation, insulation board and soft wall sheathing.

FEATURES & BENEFITS

- 90 day soft parts warranty
- R.E.D. Promise™



Fixed metal exhaust plate

Provides a more robust tool

Anti-skid grips

Helps prevent tool from sliding off of roof

Lightweight and Excellent Balance

Allow all day use without user fatigue

Rotating belt hook

Hang tool from belt when both hands are needed

Tool-free depth adjustment

Prevents nail over-driving and shingle blow-through

Pneumatic dual feed pawl system

Provides smooth consistent actuation

Nose-piece carbide inserts

Provides nose-piece durability and extended life

Vinyl Siding attachment capable

Grip-Rite® Part #GRTN8800

GRTRN45/SPECIFICATIONS

Firing mode	Bump fire
Magazine capacity	120
Operating pressure	70-120 PSI
Fastener type	15° Coil Roofing Nails
Collation	Wire
Fastener range	7/8" to 1-3/4"



800-676-7777
www.grip-rite.com



15° COIL SIDING & FENCING NAILER

HEIGHT: 12.60" | LENGTH: 10.70" | WIDTH: 5.10" | WEIGHT: 4.80 LB.

Siding, fiber cement, fencing, cedar shake, soffit, and other manufacturing applications.

FEATURES & BENEFITS

- Sliding magazine tray provides fast easy loading for increased production
- 90 day soft parts warranty
- R.E.D. Promise™



360° tool free air exhaust

Directs air exhaust away from user or work surface when needed

Selectable trigger

Switch easily and quickly between sequential and bump fire mode

Tool-free depth adjustment

Easily set desired nail driving depth and prevent damage to project

Wire debris shield

Prevents flying debris and potential injury

Rotating belt hook

Hang tool from belt when both hands are needed

Shoots both wire and plastic sheet

Use the correct fastener for the application

Includes no-mar pad

Protects work surface

Transparent magazine

Know when to reload

AUTOMATIC RELOAD

The nail coil holder will slide out automatically once the magazine cover is open. This mechanism allows quick and positive nail loading.

GRCS250/SPECIFICATIONS

Firing mode	Selectable trigger
Magazine capacity	200-350
Operating pressure	70-120 PSI
Fastener type	15° Coil siding & fencing nails
Collation	Wire and plastic sheet
Fastener range	Wire 1-3/4" to 2-1/2" Plastic 1-1/4" to 2-1/2"
Fastener diameter	0.090" to 0.099"



0° COIL SIDING & FENCING NAILER

HEIGHT: 13" | LENGTH: 12" | WIDTH: 5.75" | WEIGHT: 4.10 LB.



Siding, fiber cement, fencing, cedar shake, soffit, and other manufacturing applications.

FEATURES & BENEFITS

- 90 day soft parts warranty
- R.E.D. Promise™



360° tool free air exhaust

Directs air exhaust away from user or work surface when needed

Selectable trigger

Switch easily and quickly between sequential and bump fire mode

Belt hook included

Hang tool from belt when both hands are needed

Tool-free depth adjustment

Easily set desired nail driving depth and prevent damage to project

Includes no-mar pad

Protects work surface

GRTCS250Z/SPECIFICATIONS

Firing mode	Selectable trigger
Magazine capacity	300
Operating pressure	80-120 PSI
Fastener type	0° Coil siding & fencing nails
Collation	Plastic sheet
Fastener range	1-1/4" to 2-1/2"
Fastener diameter	0.080" to 0.099"



800-676-7777
www.grip-rite.com

Staplers



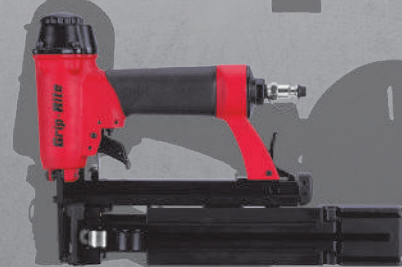


Plastic Cap Stapler

Roofing underlayment, house-wrap and other weather barriers

FEATURES & BENEFITS

- Fasteners assembled in the USA and come in a reusable plastic tub
- Laser weld cap technology
- Smallest cap tool footprint available today
- Fastest loading cap tool on the market
- Plastic fastener tub provides superior quality & protection from the elements means less waste
- Superior to other cap systems & prevent waste
- Lightweight, balanced & exceptional maneuverability
- Increased production
- 90 day soft parts warranty
- R.E.D. Promise™



GRC58A/SPECIFICATIONS

Firing mode	Bump fire
Magazine capacity	110 Caps & Staples
Operating pressure	110-120 PSI
Fastener type	80 Series Staples & 1" Diameter plastic caps
Collation	Caps: Laser weld/Staples: Glue
	Cap: 1" / Staples: 5/8"

25% SMALLER

FOOTPRINT COMPARED TO THE COMPETITION



800-676-7777
www.grip-rite.com

When Speed and Time Matter...

LOADED & READY IN 6 SECONDS

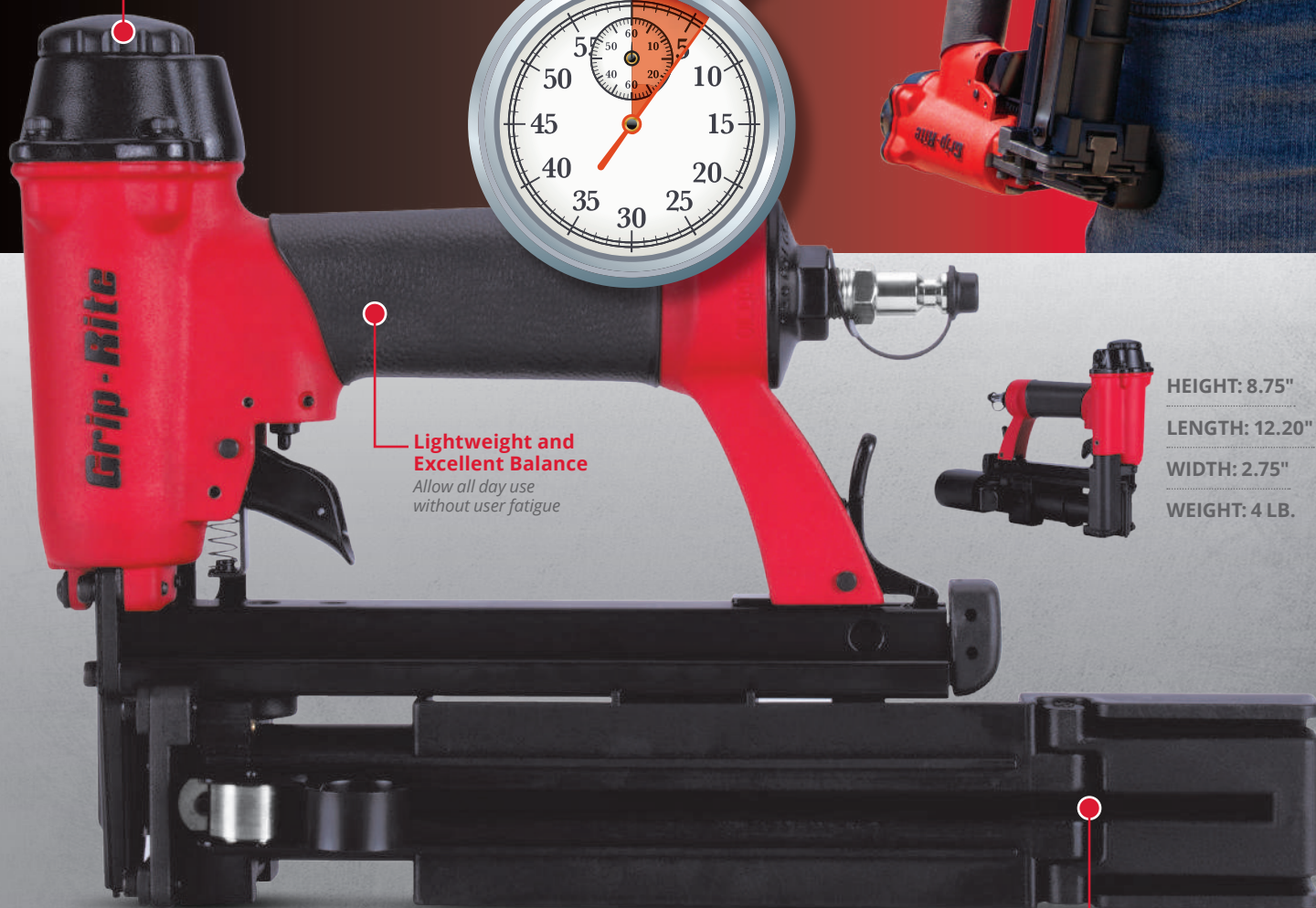
360° tool free air exhaust

Directs air exhaust away from user or work surface when needed



Lightweight and Excellent Balance

Allow all day use without user fatigue



HEIGHT: 8.75"

LENGTH: 12.20"

WIDTH: 2.75"

WEIGHT: 4 LB.

Quick and Easy Loading

Loads in seconds vs. minutes

WE BUILD AMERICA

16 GAUGE CONSTRUCTION STAPLER

HEIGHT: 10.80" | LENGTH: 12.60" | WIDTH: 2.90" | WEIGHT: 4.20 LB.

16_{GA}
MEDIUM CROWN
STAPLE



Roof decking, floor decking, sub-flooring, sheathing, furniture, wood fencing, crates and pallets

FEATURES & BENEFITS

- 90 day soft parts warranty
- R.E.D. Promise™



GRTSM2016C SPECIFICATIONS

Firing mode	Bump Fire
Magazine capacity	140
Operating pressure	70-120 PSI
Fastener type	16 Gauge 7/16" crown staples
Collation	Adhesive
Fastener range	1" to 2"



800-676-7777
www.grip-rite.com



18_{GA}
NARROW CROWN
STAPLE

18 GAUGE FINISH STAPLER

HEIGHT: 10" | LENGTH: 11.30" | WIDTH: 2.25" | WEIGHT: 2.80 LB.

Soffit, furniture, paneling, cabinets, trim, countertop blanks and woodworking

FEATURES & BENEFITS

- Metal interior components
- Built for professional applications and extends life of tool
- 90 day soft parts warranty
- R.E.D. Promise™



360° tool free air exhaust

Directs air exhaust away from user or work surface when needed

Rotating belt hook

Hang tool from belt when both hands are needed

Selectable trigger

Switch easily and quickly between sequential and bump fire mode

Swivel Plug included

Allows increased tool maneuverability

Tool-free depth adjustment

Easily set desired staple driving depth

Quick clear nose latch

Quickly remove jams or debris from nose-piece

Removable no-mar tip

helps to prevent the material from getting marred or dented

Precision narrow nose-piece

Access tight spaces with precise placement of fastener

GRTSN150 SPECIFICATIONS

Firing mode	Selectable trigger
Magazine capacity	140
Operating pressure	70-110 PSI
Fastener type	18 Gauge 1/4" crown staples
Collation	Adhesive
Fastener range	3/4" to 1-1/2"





Tacker Stapler

GRR11



Insulation, carpeting, roofing, felt paper, poly sheeting, vapor barrier

FEATURES & BENEFITS

- All steel construction
- Anti-rust chrome plating
- Quick jam clearing
- Comfort grip
- Rear load
- 90-day warranty

SPECIFICATIONS	
Firing mode	Impact
Magazine capacity	High Capacity
Height	2.25"
Length	12"
Width	1.63"
Tool Weight	1.95 LB.



Tacker Stapler

GRR19



Carpet pad, insulation, felt paper, poly sheeting, vapor barrier

FEATURES & BENEFITS

- All steel construction
- Anti-rust chrome plating
- Quick jam clearing
- Comfort grip
- Lightweight
- 90-day warranty

SPECIFICATIONS	
Firing mode	Impact
Magazine capacity	High Capacity
Height	1.5"
Length	10.25"
Width	1.25"
Tool Weight	1.2 LB.



Tacker Stapler

GR50BL



Felt paper, poly sheeting, vapor barrier, insulation and carpeting

FEATURES & BENEFITS

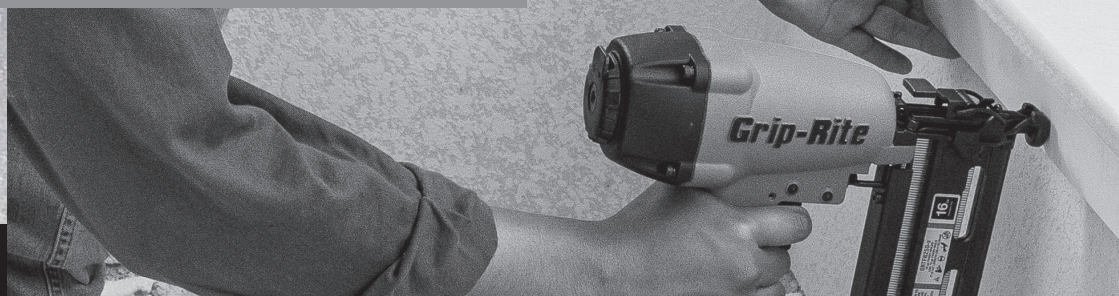
- All steel construction
- Quick jam clearing
- Bottom load
- Anti-rust chrome plating
- Comfort grip
- 90-day warranty

SPECIFICATIONS	
Firing mode	Impact
Magazine capacity	High Capacity
Height	3.38"
Length	11.6"
Width	1.75"
Tool Weight	2.10 LB.



800-676-7777
www.grip-rite.com

Finish



16 GAUGE FINISH NAILER

HEIGHT: 11" | LENGTH: 12.50" | WIDTH: 3" | WEIGHT: 3.90 LB.

16
GA
STRAIGHT NAIL



Baseboard, cabinet, chair rail, trim, molding and finish work.

FEATURES & BENEFITS

- Metal interior components
- Built for professional applications and extends life of tool
- 90 day soft parts warranty
- R.E.D. Promise™



GRTFN250/SPECIFICATIONS

Firing mode	Selectable trigger
Magazine capacity	110
Operating pressure	70-110 PSI
Fastener type	16 Gauge finish nails
Collation	Adhesive
Fastener range	1" to 2 1/2"



800-676-7777
www.grip-rite.com



18
GA
BRAD NAIL

18 GAUGE BRAD NAILER

HEIGHT: 9.90" | LENGTH: 9.70" | WIDTH: 2.40" | WEIGHT: 2.90 LB.

Cabinet, trim, baseboard, chair rail, and finish work.

FEATURES & BENEFITS

- Metal interior components
- Built for professional applications and extends life of tool
- 90 day soft parts warranty
- R.E.D. Promise™



GRTBN200N/SPECIFICATIONS	
Firing mode	Selectable trigger
Magazine capacity	110
Operating pressure	70-110 PSI
Fastener type	18 Gauge brad nails
Collation	Adhesive
Fastener range	5/8" to 2"



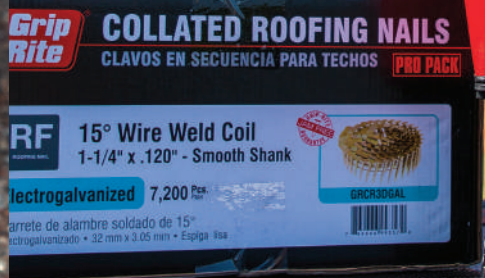
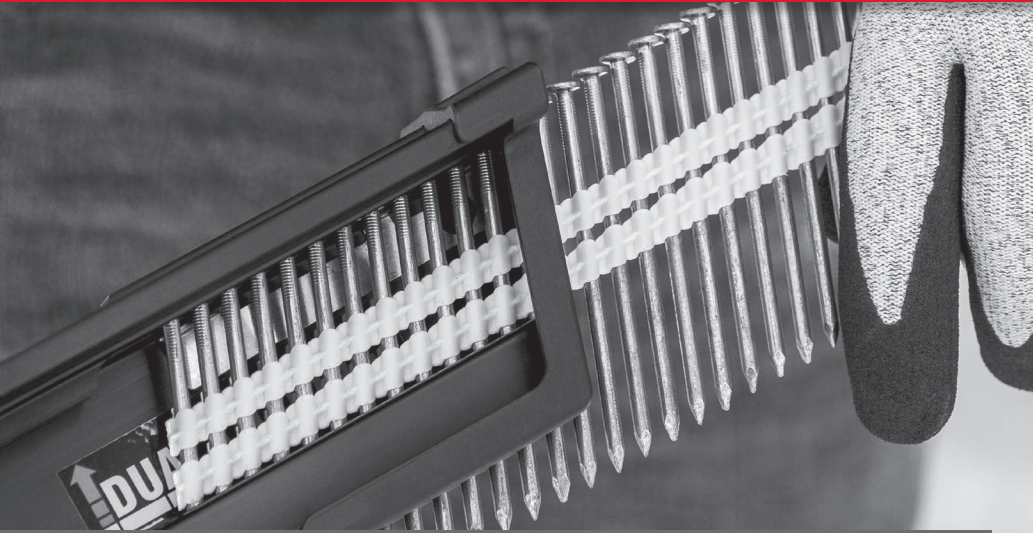
On the jobsite, tools just need to work. The **R.E.D. System™** from **Grip-Rite®** is built to do just that with a fully loaded suite of tools, compressors and accessories that work together to optimize the **Jam-Free Guarantee** with every **Grip-Rite®** collated fastener. Reliability and efficiency that delivers the durability you expect from the leader in collated fasteners. **Get with the System.**



800-676-7777
www.grip-rite.com

WE BUILD AMERICA™

Collated Fasteners



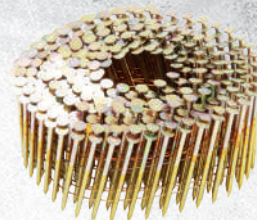


FRAMING

15°
COIL SIDING NAIL

Wire Coil Nails

For best results, use with Grip-Rite®
GRTC90 15° Coil Framing Nailer. pg. 8



Bright Coated

LENGTH	SHANK DIAMETER	SHANK	SKU	PCS./BOX	PLASTIC TUB
1-1/2"	.099	SMOOTH	GRC4P99ST	4.5M	
1-1/2"	.113	SMOOTH	GRC4P113ST	4.5M	
2"	.099	SMOOTH	GRC6P99D	3M	
2"	.099	RING	GRC6R99D	3M	
2-1/4"	.099	SMOOTH	GRC7P99ST	4.5M	
2-1/4"	.113	SMOOTH	GRC7P113ST	4.5M	
2-3/8"	.099	SMOOTH	GRC8P99D	3M	
2-3/8"	.099	RING	GRC8R99D	3M	
2-3/8"	.113	SMOOTH	GRC8PD	3M	
2-3/8"	.113	RING	GRC8RD	3M	
2-3/8"	.113	RING	GRC8RD45	4.5M	
2-1/2"	.131	SMOOTH	GRC8PZD	3M	
2-1/2"	.131	SCREW	GRC8PZD45S	4.5M	
3"	.120	SMOOTH	GRC10PD	2.5M	
3"	.131	SMOOTH	GRC10PZD	2.5M	
3-1/4"	.120	SMOOTH	GRC12PD	2.5M	
3-1/4"	.120	SCREW	GRC12SD	2.5M	
3-1/4"	.131	SMOOTH	GRC12PZD	2.5M	

Electrogalvanized

LENGTH	SHANK DIAMETER	SHANK	SKU	PCS./BOX	PLASTIC TUB
2"	.099	SMOOTH	GRC6P99DG	3M	
2"	.099	RING	GRC6R99DG	3M	
2-3/8"	.099	SMOOTH	GRC8P99DG	3M	
2-3/8"	.099	RING	GRC8R99DG	3M	
2-3/8"	.113	RING	GRC8RDG	3M	
2-1/2"	.131	SMOOTH	GRC8PZDG	3M	
2-1/2"	.131	RING	GRC8RZDG	3M	
3"	.120	SMOOTH	GRC10PDG	2.5M	
3"	.120	RING	GRC10RDG	2.5M	
3-1/4"	.120	SMOOTH	GRC12PDG	2.5M	
3-1/4"	.120	RING	GRC12RDG	2.5M	
3-1/4"	.131	SMOOTH	GRC12PZDG	2.5M	

Hot Galvanized/Exterior Galvanized

LENGTH	SHANK DIAMETER	SHANK	SKU	PCS./BOX	PLASTIC TUB
2"	.099	RING	GRC6R99DHG	3M	
2-3/8"	.099	SMOOTH	GRC8P99DHG	3M	
2-3/8"	.099	RING	GRC8R99DHG	3M	
2-3/8"	.113	SMOOTH	GRC8PDHG	3M	
2-3/8"	.113	RING	GRC8RDHG	3M	
3"	.120	SMOOTH	GRC10PDHG	2.5M	
3"	.120	RING	GRC10RDHG	2.5M	
3-1/4"	.120	SMOOTH	GRC12PDHG	2.5M	
3-1/4"	.120	RING	GRC12RDHG	2.5M	

#304 Stainless Steel

LENGTH	SHANK DIAMETER	SHANK	SKU	PCS./BOX	PLASTIC TUB
2"	.113	RING	MAXC62822	3.6M	
2-1/2"	.113	RING	MAXC62825	3.6M	
3"	.120	RING	MAXC62828	1.8M	
3-1/4"	.120	RING	MAXC64432	2.5M	





FRAMING

21°

ROUND HEAD NAIL

Plastic Strip Round Head Nails

For best results, use with Grip-Rite®
GRTR83 21° Plastic Strip Framing Nailer. pg. 6



The Grip-Rite® Fastener I.D. System

The Grip-Rite® Fastener I.D. System allows both contractors and building inspectors to identify hand drive and collated nails by the numbers stamped on the fastener heads. The number is the key to all the relevant information about the fastener, including its size, description, type, and item number. The stamped head is one of the most recognized and reputable coding systems for fasteners. This convenient system makes identifying fasteners, both before and after installation, easier than ever.

Grip-Rite® I.D. System fasteners are subjected to rigorous testing and comply with most building code standards, including ICC-ES ESR-1539. This ensures peace of mind when building to specifications.

Bright Coated

LENGTH	SHANK DIAMETER	SHANK	HEAD STAMP	SKU	PCS./BOX
1-1/2"	0.148	SMOOTH	10	GRX2110	6M
2-1/8"	0.148	SMOOTH	5	GRX2105	4M
2-1/8"	0.148	SCREW	17	GRX2117	4M
2-1/4"	0.148	SMOOTH	3	GRX2103	4M
2-1/4"	0.148	SCREW	22	GRX2122	4M
2-3/8"	0.113	SMOOTH	7	GRX2107	5M
2-3/8"	0.113	RING	20	GRX2120	5M
2-3/8"	0.148	SMOOTH	2	GRX2102	4M
2-3/8"	0.148	SCREW	11	GRX2111	4M
2-3/8"	0.148	RING	21	GRX2121	4M
2-1/2"	0.131	SMOOTH	1	GRX21015M	5M
3"	0.131	SMOOTH	14	GRX2114	4M
3"	0.131	RING	23	GRX2123	4M
3"	0.148	SMOOTH	25	GRX2125	4M
3-1/4"	0.131	SMOOTH	24	GRX2124	4M
3-1/4"	0.148	SMOOTH	4	GRX2104	4M
3-1/4"	0.148	SMOOTH	4	GRX21043M	3M
3-1/2"	0.162	SMOOTH	9	GRX2109	2.5M
3-1/2"	0.162	SMOOTH	9	GRX21093M	3M



FRAMING

21°
 ROUND HEAD NAIL

Plastic Strip Round Head Nails

For best results, use with Grip-Rite®
 GRFR83 21° Plastic Strip Framing Nailer. pg. 6

Bright Coated

LENGTH	SHANK DIAMETER	SHANK	SKU	PCS./BOX	PLASTIC TUB
1-1/2"	.148	SMOOTH	GR112148	6M	
2"	.113	SMOOTH	GR03L	2.5M	
2"	.113	SMOOTH	GR03	5M	
2"	.113	RING	GR04	5M	
2-1/8"	.148	SMOOTH	GR7D148	4M	
2-1/4"	.148	SMOOTH	GR7DL148	4M	
2-1/4"	.148	SMOOTH	GR7DL1481M	1M	•
2-1/4"	.148	SCREW	GR7DL148S	4M	
2-3/8"	.113	SMOOTH	GR071M	1M	•
2-3/8"	.113	SMOOTH	GR07L	2.5M	
2-3/8"	.113	SMOOTH	GR07	5M	
2-3/8"	.113	RING	GR08R1M	1M	•
2-3/8"	.113	RING	GR08RL	2.5M	
2-3/8"	.113	RING	GR08R	5M	
2-3/8"	.113	SCREW	GR016	5M	
2-3/8"	.120	SMOOTH	GR238120	5M	
2-3/8"	.148	SMOOTH	GR8D148	4M	
2-3/8"	.148	SMOOTH	GR8D1481M	1M	•
2-3/8"	.148	RING	GR8D148R	4M	
2-3/8"	.148	SCREW	GR8D148S	4M	
2-1/2"	.131	SMOOTH	GR8D131	4M	
2-1/2"	.131	SMOOTH	GR212131	5M	
2-1/2"	.131	SMOOTH	GR2121311M	1M	•
2-1/2"	.131	RING	GR212131R	5M	
2-1/2"	.148	SMOOTH	GR212148	4M	
2-1/2"	.148	RING	GR212148R	4M	
3"	.120	SMOOTH	GR3011M	1M	•
3"	.120	SMOOTH	GR301L	2M	
3"	.120	SMOOTH	GR301	4M	
3"	.120	SCREW	GR3120S	4M	
3"	.131	SMOOTH	GR0141M	1M	•
3"	.131	SMOOTH	GR014L	2M	
3"	.131	SMOOTH	GR014	4M	
3"	.131	RING	GR014R	4M	
3"	.131	SCREW	GR3131S	4M	
3"	.148	SMOOTH	GR3148	4M	
3-1/4"	.120	SMOOTH	GR444L	2M	
3-1/4"	.120	SMOOTH	GR444	4M	
3-1/4"	.131	SMOOTH	GR0241M	1M	•
3-1/4"	.131	SMOOTH	GR024L	2M	
3-1/4"	.131	SMOOTH	GR024	4M	
3-1/4"	.148	SMOOTH	GR3141481M	980	•
3-1/4"	.148	SMOOTH	GR3141483M	3M	
3-1/4"	.148	SMOOTH	GR314148	4M	
3-1/4"	.148	SCREW	GR314148S	4M	
3-3/8"	.131	SMOOTH	GR338	4M	
3-1/2"	.131	SMOOTH	GR312131L	2M	
3-1/2"	.131	SMOOTH	GR312131	4M	
3-1/2"	.131	SMOOTH	GR3121311M	1M	•
3-1/2"	.135	SMOOTH	GR3121354M	4M	
3-1/2"	.162	SMOOTH	GR312162	2.5M	
3-1/2"	.162	SMOOTH	GR3121623M	3M	

Electrogalvanized

LENGTH	SHANK DIAMETER	SHANK	SKU	PCS./BOX	PLASTIC TUB
2"	.113	SMOOTH	GR05GL	2.5M	
2"	.113	RING	GR04G	5M	
2-3/8"	.113	SMOOTH	GR09GL	2.5M	
2-3/8"	.113	SMOOTH	GR09G	5M	
2-3/8"	.113	RING	GR08GL	2.5M	
2-3/8"	.113	RING	GR08G	5M	
3"	.120	SMOOTH	GR301GL	2M	
3"	.120	SMOOTH	GR301G	4M	
3"	.120	RING	GR408GL	2M	
3"	.120	RING	GR408G	4M	
3"	.131	SMOOTH	GR033G	4M	
3-1/4"	.131	SMOOTH	GR034G	4M	

Hot Galvanized (Exterior Galvanized)

LENGTH	SHANK DIAMETER	SHANK	SKU	PCS./BOX	PLASTIC TUB
1-1/2"	.148	SMOOTH	GR4D148HG	5M	
2"	.113	SMOOTH	GR05HG	5M	
2"	.113	RING	GR04HG1M	1M	•
2"	.113	RING	GR04HG	5M	
2-1/4"	.148	SMOOTH	GR449HG	4M	
2-3/8"	.113	SMOOTH	GR09HG1M	1M	•
2-3/8"	.113	SMOOTH	GR09HGL	2.5M	
2-3/8"	.113	SMOOTH	GR09HG	5M	
2-3/8"	.113	SMOOTH	GR238CSHG	2.5M	
2-3/8"	.113	RING	GR08RHG1M	1M	•
2-3/8"	.113	RING	GR08HGL	2.5M	
2-3/8"	.113	RING	GR08RHG	5M	
2-3/8"	.113	SCREW	GR016HG	5M	
2-3/8"	.148	SMOOTH	GR8D148HG	5M	
2-1/2"	.131	SMOOTH	GR8D131HG	4M	
2-1/2"	.131	SMOOTH	GR212131HG	5M	
2-1/2"	.131	RING	GR212131RH	5M	
2-1/2"	.148	SMOOTH	GR212148HG	4M	
3"	.120	SMOOTH	GR301HGL	2M	
3"	.120	SMOOTH	GR301HG	4M	
3"	.120	RING	GR408HG1M	1M	•
3"	.120	RING	GR408HGL	2M	
3"	.120	RING	GR408HG	4M	
3"	.120	SCREW	GR015HG	4M	
3"	.131	SMOOTH	GR033HG1M	1M	•
3"	.131	SMOOTH	GR033HG	4M	
3"	.131	RING	GR033RHG	4M	
3"	.148	SMOOTH	GR3148HG2M	2M	
3"	.148	SMOOTH	GR3148HG	4M	
3-1/4"	.120	SMOOTH	GR444HGL	2M	
3-1/4"	.120	SMOOTH	GR444HG	4M	
3-1/4"	.120	RING	GR444RHGL	4M	
3-1/4"	.120	SCREW	GR444SHGL	2M	



FRAMING

21°

ROUND HEAD NAIL

Plastic Strip Round Head Nails

For best results, use with Grip-Rite®
GRTFR83 21° Plastic Strip Framing Nailer. pg. 6



Hot Galvanized (Exterior Galvanized)

LENGTH	SHANK DIAMETER	SHANK	SKU	PCS./BOX	PLASTIC TUB
3-1/4"	.120	SCREW	GR444SHG	4M	
3-1/4"	.131	SMOOTH	GR034HG1M	1M	•
3-1/4"	.131	SMOOTH	GR034HGL	2M	
3-1/4"	.131	SMOOTH	GR034HG	4M	
3-1/4"	.131	SMOOTH	GR314CSHG	2M	
3-1/4"	.131	RING	GR034HGR1M	1M	•
3-1/4"	.131	SCREW	GR034SHG	4M	
3-1/4"	.148	SMOOTH	GR31448HG3	3M	
3-1/4"	.148	SMOOTH	GR314148HG	4M	
3-3/8"	.131	SMOOTH	GR338HG	4M	
3-3/8"	.131	RING	GR338RHG	4M	
3-1/2"	.131	SMOOTH	GR312131HG	4M	
3-1/2"	.131	RING	GR312131HGR1M	1M	•
3-1/2"	.162	SMOOTH	GR312162HG	3M	
3-1/2"	.162	SMOOTH	GR31262HG3	3M	

#304 Stainless Steel

LENGTH	SHANK DIAMETER	SHANK	SKU	PCS./BOX	PLASTIC TUB
2"	.113	RING	MAXC62878	1M	•
2-3/8"	.120	RING	MAXC62886	1M	•
2-3/8"	.120	RING	MAXC62888	1M	•
2-3/8"	.120	RING	MAXC62890	1M	•
2-3/8"	.120	RING	MAXC62803	2M	
3"	.120	RING	MAXC62892	1M	•
3"	.120	RING	MAXC62804	2M	
3"	.131	RING	MAXC62894	1M	•
3"	.131	RING	MAXC62898	1M	•
3"	.131	RING	MAXC62806	2M	
3-1/4"	.120	RING	MAXC62902	1M	•
3-1/4"	.120	RING	MAXC62810	2M	
3-1/4"	.131	RING	MAXC62905	1M	•
3-1/4"	.131	RING	MAXC62812	2M	
3-1/4"	.131	SCREW	MAXC62907	1M	•

#316 Stainless Steel

LENGTH	SHANK DIAMETER	SHANK	SKU	PCS./BOX	PLASTIC TUB
2"	.113	RING	MAXC62879	1M	•
2-3/8"	.120	RING	MAXC62887	1M	•
3"	.120	RING	MAXC62893	1M	•
3"	.131	RING	MAXC62895	1M	•
3"	.131	RING	MAXC62899	1M	•
3"	.131	SCREW	MAXC62896	1M	•
3-1/4"	.120	RING	MAXC62903	1M	•
3-1/4"	.131	RING	MAXC62906	1M	•
3-1/2"	.131	RING	MAXC62900	1M	•

FRAMING

28°
CLIPPED NAIL HEAD

Plastic Strip Clipped Head Nails



Bright Coated

LENGTH	SHANK DIAMETER	SHANK	SKU	PCS./BOX	PLASTIC TUB
2-3/8"	.113	SMOOTH	GR603L	2.5M	
2-3/8"	.113	RING	GR609RL	2.5M	
3"	.120	SMOOTH	GR615L	2M	
3"	.131	SMOOTH	GR606L	2M	
3-1/4"	.131	SMOOTH	GR607L	2M	

Electrogalvanized

LENGTH	SHANK DIAMETER	SHANK	SKU	PCS./BOX	PLASTIC TUB
2-3/8"	.113	SMOOTH	GR611GL	2.5M	
3"	.120	SMOOTH	GR615GL	2M	
3"	.120	RING	GR617GL	2M	
3-1/4"	.131	SMOOTH	GR613GL	2M	

28°
WIRE WELD NAIL

Wire Weld Clipped Head Nails



Bright Coated

LENGTH	SHANK DIAMETER	SHANK	SKU	PCS./BOX	PLASTIC TUB
2"	.113	SMOOTH	GRS6D	2.5M	
2"	.113	RING	GRS6DR	2.5M	
2-3/8"	.113	SMOOTH	GRS8D	2.5M	
2-3/8"	.113	RING	GRS8DR	2.5M	
3"	.120	SMOOTH	GRS10D	2M	
3"	.131	SMOOTH	GRS10DZ	2M	
3-1/4"	.120	SMOOTH	GRS12D	2M	
3-1/4"	.131	SMOOTH	GRS12DZ	2M	
3-1/2"	.131	SMOOTH	GRS16DZ	2M	

Electrogalvanized

LENGTH	SHANK DIAMETER	SHANK	SKU	PCS./BOX	PLASTIC TUB
2-3/8"	.113	RING	GRS8DRG	2.5M	
3"	.120	RING	GRS10DRG	2M	

Hot Galvanized-Exterior Galvanized

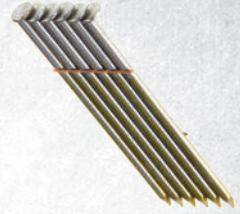
LENGTH	SHANK DIAMETER	SHANK	SKU	PCS./BOX	PLASTIC TUB
2"	.113	SMOOTH	GRS6DHG	2.5M	
2"	.113	RING	GRS6DRHG	2.5M	
2-3/8"	.113	SMOOTH	GRS8DHG	2.5M	
2-3/8"	.113	RING	GRS8DRHG	2.5M	
3"	.120	SMOOTH	GRS10DHG	2M	
3"	.120	RING	GRS10DRHG	2M	
3-1/4"	.120	SMOOTH	GRS12DHG	2M	
3-1/4"	.120	RING	GRS12DRHG	2M	
3-1/4"	.120	SCREW	GRS12DSHG	2M	
3-1/2"	.131	SMOOTH	GRS16DZHG	2M	



FRAMING

28°
WIRE WELD NAIL

Wire Weld Offset Round Head Nails



Bright Coated

LENGTH	SHANK DIAMETER	SHANK	SKU	PCS./BOX	PLASTIC TUB
2"	.113	SMOOTH	GRS6DRH	2.5M	
2"	.113	RING	GRS6DRRH	2.5M	
2-3/8"	.113	SMOOTH	GRW8H1	1M	•
2-3/8"	.113	RING	GRW8RH1	1M	•
2-3/8"	.113	RING	GRS8DRRH	2.5M	
2-3/8"	.120	SMOOTH	GRS8DYRH	2.5M	
2-3/8"	.120	RING	GRW8YRH1	1M	•
2-3/8"	.120	RING	GRS8DYRRH	2.5M	
3"	.120	SMOOTH	GRW10H1	1M	•
3"	.120	SMOOTH	GRS10DRH	2M	
3"	.131	SMOOTH	GRW10ZH1	1M	•
3-1/4"	.120	SMOOTH	GRW12H1	1M	•
3-1/4"	.120	SMOOTH	GRS12DRH	2M	
3-1/4"	.131	SMOOTH	GRW12ZH1	1M	•
3-1/4"	.131	SMOOTH	GRS12DZRH	2M	
3-1/2"	.131	SMOOTH	GRW16ZH1	1M	•
3-1/2"	.131	SMOOTH	GRS16DZRH	2M	

304 Stainless Steel

LENGTH	SHANK DIAMETER	SHANK	SKU	PCS./BOX	PLASTIC TUB
2-3/8"	.120	RING	MAXC62890	1M	•
3"	.131	RING	MAXC62897	1M	•
3-1/4"	.131	RING	MAXC62911	1M	•

Hot Galvanized (Exterior Galvanized)

LENGTH	SHANK DIAMETER	SHANK	SKU	PCS./BOX	PLASTIC TUB
2"	.113	RING	GRW6RHGH1	1M	•
2"	.113	RING	GRS6DRRHGG	2.5M	
2-3/8"	.113	SMOOTH	GRS8DHGRH	2.5M	
2-3/8"	.113	RING	GRW8RHGH1	1M	•
2-3/8"	.113	RING	GRS8DRRHGG	2.5M	
2-3/8"	.120	SMOOTH	GRS8DYHGRH	2.5M	
2-3/8"	.120	RING	GRW8YRHGH1	1M	•
2-3/8"	.120	RING	GRS8YRRHGG	2.5M	
3"	.120	SMOOTH	GRS10DRHGG	2M	
3"	.120	RING	GRW10RHGH1	1M	•
3"	.120	RING	GRS10RRHGG	2M	
3"	.131	SMOOTH	GRW10ZHHG	1M	•
3-1/4"	.120	SMOOTH	GRS12DRHGG	2M	
3-1/4"	.131	SMOOTH	GRW12ZHHG	1M	•
3-1/4"	.131	SMOOTH	GRS12ZRHGG	2M	
3-1/2"	.131	SMOOTH	GRS16ZRHGG	2M	



FRAMING

30°
CLIPPED HEAD NAIL

Paper Tape Clipped Head Nails

For best results, use with Grip-Rite®
GRFC83 30° Paper Tape Framing Nailer. pg. 7

Bright Coated

LENGTH	SHANK DIAMETER	SHANK	SKU	PCS./BOX	PLASTIC TUB
2"	.113	SMOOTH	GRSP6D	2.5M	
2"	.113	RING	GRSP6DR	2.5M	
2-3/8"	.113	RING	GRSP8DR	2.5M	
3"	.120	SMOOTH	GRSP10D	2M	
3"	.120	RING	GRSP10DR	2M	
3"	.131	SMOOTH	GRSP10DZ	2M	
3"	.131	SMOOTH	GRSP10DZL	2.5M	
3-1/4"	.120	SMOOTH	GRSP12D	2M	
3-1/4"	.131	SMOOTH	GRSP12DZ	2M	
3-1/4"	.131	SMOOTH	GRSP12DZB	2.5M	
3-1/2"	.131	SMOOTH	GRSP16DZ	2M	

Bright Coated (Long Strip)

LENGTH	SHANK DIAMETER	SHANK	SKU	PCS./BOX	PLASTIC TUB
2-3/8"	.113	SMOOTH	GRRVSP8D	2.5M	
2-3/8"	.113	SMOOTH	GRRVSP8D5	5M	
2-3/8"	.113	RING	GRRVSP8DR5	5M	
3"	.131	SMOOTH	GRRVP10DZ2	2M	
3"	.131	RING	GRRVSP10DR	2.5M	
3-1/4"	.131	SMOOTH	GRRVSP12DZ	2.5M	
2-3/8"	.113	RING	GRRVSP8DR	2.5M	
3"	.113	SMOOTH	GRRVSP10DZ	2.5M	
3"	.120	SMOOTH	GRRVSP10D	2.5M	
3-1/4"	.120	SMOOTH	GRRVSP12D	2.5M	

Electrogalvanized

LENGTH	SHANK DIAMETER	SHANK	SKU	PCS./BOX	PLASTIC TUB
2"	.113	SMOOTH	GRSP6DG	2.5M	
2-3/8"	.113	SMOOTH	GRSP8DG	2.5M	
2-3/8"	.113	RING	GRSP8DRG	2.5M	
3"	.120	SMOOTH	GRSP10DG	2M	
3"	.120	RING	GRSP10DRG	2M	
3-1/4"	.120	RING	GRSP12DRG	2M	

Hot Galvanized (Exterior Galvanized)

LENGTH	SHANK DIAMETER	SHANK	SKU	PCS./BOX	PLASTIC TUB
2"	.113	SMOOTH	GRSP6DHG	2.5M	
2"	.113	RING	GRSP6DRHG	2.5M	
2-3/8"	.113	SMOOTH	GRSP8DHG	2.5M	
2-3/8"	.113	RING	GRSP8DRHG	2.5M	
3"	.120	SMOOTH	GRSP10DHG	2M	
3"	.120	RING	GRSP10DRHG	2M	
3-1/4"	.120	RING	GRSP12DRHG	2M	
3-1/4"	.131	SMOOTH	GRSP12DZHG	2M	
3-1/2"	.131	SMOOTH	GRSP16DZHG	2M	

Hot Galvanized (Long Strip)

LENGTH	SHANK DIAMETER	SHANK	SKU	PCS./BOX	PLASTIC TUB
2"	.113	RING	GRRV6DRHG	2M	
2-3/8"	.113	RING	GRRV8DRHG	2M	
3"	.120	RING	GRRV10DRHG	2M	
3-1/4"	.131	RING	GRRV12DRHG	2M	



800-676-7777
www.grip-rite.com



FRAMING

30°
 FULL HEAD NAIL

Paper Tape Offset Round Head Nails

For best results, use with Grip-Rite®
 GRTFC83 30° Paper Tape Framing Nailer. pg. 7



Bright Coated

LENGTH	SHANK DIAMETER	SHANK	SKU	PCS./BOX	PLASTIC TUB
2"	.113	SMOOTH	GRSP6DH	2.5M	
2-3/8"	.113	SMOOTH	GRP8H1	1M	•
2-3/8"	.113	SMOOTH	GRSP8DH	2.5M	
2-3/8"	.113	SMOOTH	GRSP8H	2.5M	
2-3/8"	.113	SMOOTH	GRSP8D4M	4M	
2-3/8"	.113	RING	GRP8RH1	1M	•
2-3/8"	.113	RING	GRSP8DRH	2.5M	
2-3/8"	.113	RING	GRSP8DR4M	4M	
3"	.120	SMOOTH	GRP10H1	1M	•
3"	.120	SMOOTH	GRSP10DH	2M	
3"	.120	SMOOTH	GRSP10DH4M	4M	
3"	.131	SMOOTH	GRP10ZH1	1M	•
3"	.131	SMOOTH	GRSP10DZH	2M	
3"	.131	SMOOTH	GRSP10ZH	2M	
3"	.131	SMOOTH	GRSP10DZH4	4M	
3-1/4"	.120	SMOOTH	GRSP12DH	2M	
3-1/4"	.131	SMOOTH	GRP12ZH1	1M	•
3-1/4"	.131	SMOOTH	GRSP12DZH	2M	
3-1/4"	.131	SMOOTH	GRSP12ZH	2M	
3-1/4"	.131	SMOOTH	GRSP12DZH4	4M	
3-1/2"	.131	SMOOTH	GRSP16DZH	2M	
3-1/2"	.131	SMOOTH	GRSP16ZH	2M	

Hot Galvanized (Exterior Galvanized)

LENGTH	SHANK DIAMETER	SHANK	SKU	PCS./BOX	PLASTIC TUB
2"	.113	RING	GRP6RHGH1	1M	•
2"	.113	RING	GSP6DRHGH	2.5M	
2"	.113	RING	GRSP6DRHG4	4M	
2-3/8"	.113	SMOOTH	GRSP8DRHHG	2.5M	
2-3/8"	.113	RING	GRP8RHGH1	1M	•
2-3/8"	.113	RING	GSP8DRHGH	2.5M	
2-3/8"	.113	RING	GRSP8RHGH	2.5M	
2-3/8"	.113	RING	GRSP8DRHG4	4M	
3"	.120	SMOOTH	GSP10DHGH	2M	
3"	.120	SMOOTH	GRSP10HGH	2M	
3"	.120	RING	GRP10RHGH1	1M	•
3"	.120	RING	GSP10DRHGH	2M	
3"	.120	RING	GRSP10RHGH	2M	
3"	.120	RING	GRSP10RHG4	4M	
3"	.131	SMOOTH	GRP10ZHGH1	1M	•
3"	.131	SMOOTH	GRP10ZHGH	2.5M	

Hot Galvanized (Exterior Galvanized)

LENGTH	SHANK DIAMETER	SHANK	SKU	PCS./BOX	PLASTIC TUB
3"	.131	SMOOTH	GRSP10ZHGH	2M	
3"	.131	RING	GSP10ZRHGH	2M	
3-1/4"	.120	RING	GSP12DRHGH	2M	
3-1/4"	.131	SMOOTH	GRP12ZHGH1	1M	•
3-1/4"	.131	SMOOTH	GSP12DZHGH	2M	
3-1/4"	.131	SMOOTH	GRSP12ZHGH	2M	
3-1/4"	.131	SMOOTH	GSP12ZHGH4	4M	
3-1/4"	.131	RING	GSP12ZRHGH	2M	
3-1/2"	.131	SMOOTH	GRSP16RHHG	2M	
3-1/2"	.131	SMOOTH	GRSP16ZHGH	2M	

304 Stainless Steel

LENGTH	SHANK DIAMETER	SHANK	SKU	PCS./BOX	PLASTIC TUB
2-3/8"	.120	RING	MAXC62888	1M	•
3"	.131	RING	MAXC62898	1M	•
3-1/4"	.131	RING	MAXC62908	1M	•

316 Stainless Steel

LENGTH	SHANK DIAMETER	SHANK	SKU	PCS./BOX	PLASTIC TUB
3-1/4"	.131	RING	MAXC62908	1M	•
3"	.131	RING	MAXC62899	1M	•
3-1/4"	.131	RING	MAXC62909	1M	•



FRAMING



33° Paper Tape Joist Hanger Nails

For best results, use with Grip-Rite®
GR150, GRSB150 & GRSB250 Metal Connector Nailer. pgs. 9-11



Bright Coated (High Tensile-HT)

LENGTH	SHANK DIAMETER	SHANK	SKU	PCS./BOX	PLASTIC TUB
1-1/2"	.131	SMOOTH	GRJH4ZHT	4M	
1-1/2"	.148	SMOOTH	GRJH4DHT3	3M	
1-1/2"	.148	SMOOTH	GRJH4D1M	1M	•
2-1/2"	.131	SMOOTH	GRJH8ZHT25	2.5M	
2-1/2"	.148	SMOOTH	GRJH8DHT25	2.5M	
2-1/2"	.148	SMOOTH	GRJH8D1M	1M	•
2-1/2"	.162	SMOOTH	GRJZ8162HT	2M	
2-1/2"	.162	SMOOTH	GRJH81621	1M	•

Electrogalvanized (High Tensile-HT)

LENGTH	SHANK DIAMETER	SHANK	SKU	PCS./BOX	PLASTIC TUB
1-1/2"	.131	SMOOTH	GRJH4DZHT	4M	
1-1/2"	.148	SMOOTH	GRJH4DCHT	3M	
2-1/2"	.148	SMOOTH	GRJH8DCHT	2M	
2-1/2"	.162	SMOOTH	GRJH8162HT	2M	

Hot Galvanized (High Tensile-HT)

LENGTH	SHANK DIAMETER	SHANK	SKU	PCS./BOX	PLASTIC TUB
1-1/2"	.131	SMOOTH	GRJH4DZHG	4M	
1-1/2"	.148	SMOOTH	GRJH4DHG1M	1M	•
1-1/2"	.148	SMOOTH	GRJH4DCHG2	2M	
1-1/2"	.148	SMOOTH	GRJH4DCHG	3M	
2-1/2"	.131	SMOOTH	GRJH8ZHG25	2.5M	
2-1/2"	.148	SMOOTH	GRJH8DCHG	2M	
2-1/2"	.162	SMOOTH	GRJH8162HG	2M	

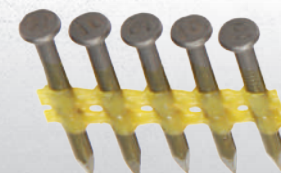
316 Stainless Steel

LENGTH	SHANK DIAMETER	SHANK	SKU	PCS./BOX	PLASTIC TUB
1-1/2"	.148	RING	MAXC64255	1.5M	•
2-1/2"	.148	RING	MAXC64254	1M	•



33° Plastic Tape Joist Hanger Nails

For best results, use with Grip-Rite®
GR150 30° Metal Connector Nailer. pg. 9



Bright Coated (High Tensile-HT)

LENGTH	SHANK DIAMETER	SHANK	SKU	PCS./BOX	PLASTIC TUB
1-1/2"	.148	SMOOTH	GRJSN112	2M	
2-1/2"	.148	SMOOTH	GRJSN212	1.5M	

Hot Galvanized (High Tensile-HT)

LENGTH	SHANK DIAMETER	SHANK	SKU	PCS./BOX	PLASTIC TUB
1-1/2"	.148	SMOOTH	GRJSN112HG	2M	
2-1/2"	.148	SMOOTH	GRJSN212HG	1.5M	



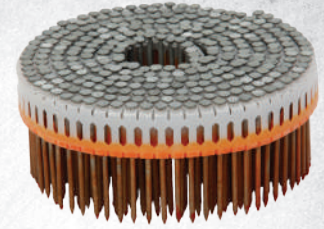


SIDING/FENCING



Plastic Sheet Coil Nails

For best results, use with Grip-Rite®
GRTCS250Z 0° Plastic Sheet Coil Siding/Fencing Nailer. pg. 16



Electrogalvanized

LENGTH	SHANK DIAMETER	SHANK	SKU	PCS./BOX	PLASTIC TUB
1-7/8"	.092	SMOOTH	GR150G	9M	
1-7/8"	.092	RING	GR151G	9M	
2-1/4"	.099	SMOOTH	GR153G	7.2M	
2-1/4"	.099	RING	GR158G	7.2M	

Electrogalvanized (9 Micron)

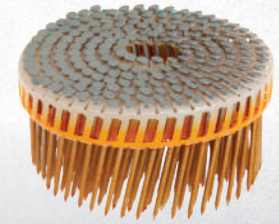
LENGTH	SHANK DIAMETER	SHANK	SKU	PCS./BOX	PLASTIC TUB
1-7/8"	.092	SMOOTH	GR150G9	9M	
1-7/8"	.092	RING	GR151G9	9M	
2-1/4"	.099	SMOOTH	GR153G9	7.2M	
2-1/4"	.099	RING	GR158G9	7.2M	

Hot Galvanized (Exterior Galvanized)

LENGTH	SHANK DIAMETER	SHANK	SKU	PCS./BOX	PLASTIC TUB
1-3/4"	.086	RING	GR166GL	3.6M	
1-7/8"	.092	RING	GR178HG	3.6M	
1-7/8"	.092	SMOOTH	GR150HG	9M	
1-7/8"	.092	RING	GR151HG	9M	
2-1/4"	.099	SMOOTH	GR153HG	7.2M	
2-1/4"	.099	RING	GR158HG	7.2M	

#304 Stainless Steel

LENGTH	SHANK DIAMETER	SHANK	SKU	PCS./BOX	PLASTIC TUB
1-7/8"	.086	RING	MAXC70340	1M	•
1-7/8"	.099	RING	MAXC62829	9M	
2-1/4"	.099	RING	MAXC70129	600	•
2-1/4"	.099	RING	MAXC64433	3.6M	
2-1/4"	.099	RING	MAXC62830	7.2M	



Plastic Sheet Coil Nails

For best results, use with Grip-Rite®
GRTCS250 15° Coil Siding/Fencing Nailer. pg. 15

Electrogalvanized

LENGTH	SHANK DIAMETER	SHANK	SKU	PCS./BOX	PLASTIC TUB
2"	.092	SMOOTH	GRPC6D92G	6M	
2"	.092	RING	GRPC6R92G	6M	
2-1/4"	.092	SMOOTH	GRPC7D92G	4.8M	
2-1/4"	.092	RING	GRPC7R92G	4.8M	

Hot Dipped Galvanized

LENGTH	SHANK DIAMETER	SHANK	SKU	PCS./BOX	PLASTIC TUB
1-3/4"	.090	RING	GRPC5R9HDG	6.3M	
1-3/4"	.092	RING	GRPC5R92HG	6M	
2"	.092	SMOOTH	GRPC6D92HG	6M	
2"	.092	RING	GRPC6R92HG	6M	
2-1/4"	.092	SMOOTH	GRPC7D92HG	4.8M	
2-1/4"	.092	RING	GRPC7R92HG	4.8M	
2-1/2"	.092	SMOOTH	GRPC8D92HG	4.8M	
2-1/2"	.092	RING	GRPC8R92HG	4.8M	

#304 Stainless Steel

LENGTH	SHANK DIAMETER	SHANK	SKU	PCS./BOX	PLASTIC TUB
1-3/4"	.092	RING	MAXC62840	3.2M	
2"	.092	RING	MAXC62834	3.2M	
2-3/16"	.092	RING	MAXC62838	3.2M	
2-1/2"	.092	RING	MAXC62836	3.2M	

#316 Stainless Steel

LENGTH	SHANK DIAMETER	SHANK	SKU	PCS./BOX	PLASTIC TUB
1-1/2"	.092	RING	MAXC70130	600	•
1-1/2"	.092	RING	MAXC62832	3.2M	
1-3/4"	.092	RING	MAXC70131	600	•
1-3/4"	.092	RING	MAXC67493	1.6M	
1-3/4"	.092	RING	MAXC62833	3.2M	
2"	.092	RING	MAXC67494	1.6M	
2"	.092	RING	MAXC62835	3.2M	
2-3/16"	.092	RING	MAXC67495	1.2M	
2-3/16"	.092	RING	MAXC62839	3.2M	
2-1/2"	.092	RING	MAXC70132	600	•
2-1/2"	.092	RING	MAXC67496	1.2M	
2-1/2"	.092	RING	MAXC62837	3.2M	

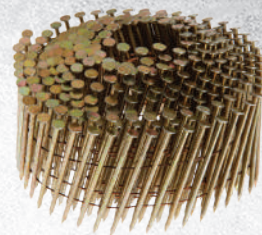


SIDING/FENCING

15°
COIL SIDING NAIL

Wire Weld Coil Nails

For best results, use with Grip-Rite®
 GRTCS250 15° Coil Siding/Fencing Nailer. pg. 15



Electrogalvanized

LENGTH	SHANK DIAMETER	SHANK	SKU	PCS./BOX	PLASTIC TUB
1-1/4"	.080	RING	GRC3R80DG	3M	
1-1/2"	.080	RING	GRC4R80DG	3M	
1-3/4"	.080	RING	GRC5R80DG	3M	
1-3/4"	.090	RING	GRC5R90DG	3M	
2"	.092	RING	GRC6R90DG	3M	
2-3/16"	.092	SMOOTH	GRC7P90DG	3M	
2-3/16"	.092	RING	GRC7R92G1	1.2M	•
2-3/16"	.092	RING	GRC7R90DG	3M	
2-1/4"	.090	RING	GRC7R90G	3.6M	
2-1/4"	.092	RING	GRC7R92G	3.6M	
2-1/2"	.092	RING	GRC8R90DG	3M	

Hot Galvanized (Exterior Galvanized)

LENGTH	SHANK DIAMETER	SHANK	SKU	PCS./BOX	PLASTIC TUB
1-1/4"	.080	RING	GRC3R80DHG	3M	
1-1/4"	.090	RING	GRC3R90HG36	3.6M	
1-1/2"	.080	RING	GRC4R80DHG	3M	
1-1/2"	.090	RING	GRC4R90HG3	3M	
1-3/4"	.080	RING	GRC5R80DHG	3M	
1-3/4"	.092	RING	GRC5R90DHG	3M	
1-3/4"	.092	RING	GRC5R92HG36	3.6M	
2"	.092	RING	GRC6R92HG1	1.2M	•
2"	.092	RING	GRC6R90DHG	3M	
2-3/16"	.092	SMOOTH	GRC7P92HG1	1.2M	•
2-3/16"	.092	RING	GRC7R92HG1	1.2M	•
2-3/16"	.092	SMOOTH	GRC7P90DHG	3M	
2-3/16"	.092	RING	GRC7R90DHG	3M	
2-1/2"	.092	SMOOTH	GRC8P90DHG	3M	
2-1/2"	.092	RING	GRC8R90DHG	3M	

#304 Stainless Steel

LENGTH	SHANK DIAMETER	SHANK	SKU	PCS./BOX	PLASTIC TUB
1-1/4"	.090	RING	MAXC62874	1.2M	•
1-1/4"	.090	RING	MAXC62817	3.6M	
1-1/2"	.090	RING	MAXC62872	1.2M	•
1-1/2"	.090	RING	MAXC62816	3.6M	
1-3/4"	.090	RING	MAXC62875	1.2M	•
1-3/4"	.086	RING	MAXC64424	1.8M	
1-3/4"	.090	RING	MAXC62818	3.6M	
2"	.090	RING	MAXC62876	1.2M	•
2"	.090	RING	MAXC62820	3.6M	
2-3/16"	.090	RING	MAXC70128	600	•
2-3/16"	.090	RING	MAXC62885	1.2M	•
2-3/16"	.090	RING	MAXC62827	3.6M	
2-3/16"	.090	RING	MAXC64428	3.6M	
2-1/2"	.090	RING	MAXC62881	900	•
2-1/2"	.090	RING	MAXC62823	3.6M	

#316 Stainless Steel

LENGTH	SHANK DIAMETER	SHANK	SKU	PCS./BOX	PLASTIC TUB
1-1/2"	.090	RING	MAXC62815	1.8M	
1-3/4"	.090	RING	MAXC62819	1.8M	
2"	.090	RING	MAXC62821	1.8M	
2-3/16"	.090	RING	MAXC62826	1.8M	
2-1/2"	.090	RING	MAXC62824	1.8M	

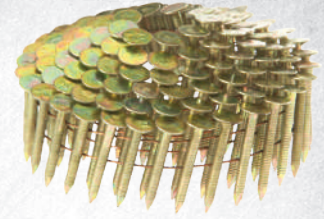


ROOFING



Coil Roofing Nails

For best results, use with Grip-Rite®
GRTRN45 15° Coil Roofing Nailer. pg. 14



Electrogalvanized

LENGTH	SHANK DIAMETER	SHANK	SKU	PCS./BOX	PLASTIC TUB
3/4"	.120	SMOOTH	GRCR19TRC	600	•
3/4"	.120	SMOOTH	GRCR19GAL	7.2M	
3/4"	.120	RING	GRCR19RGAL	7.2M	
7/8"	.120	SMOOTH	GRCR2DCGAL	7.2M	
1"	.120	SMOOTH	GRCR2DGAL	7.2M	
1-1/4"	.120	SMOOTH	GRCR3TRC	600	•
1-1/4"	.120	SMOOTH	GRCR3DGAL	7.2M	
1-1/4"	.120	RING	GRCR3DRGAL	7.2M	
1-1/2"	.120	SMOOTH	GRCR4DGAL	7.2M	
1-1/2"	.120	RING	GRCR4DRGAL	7.2M	
1-3/4"	.120	SMOOTH	GRCR5TRC	480	•
1-3/4"	.120	SMOOTH	GRCR5DGAL	7.2M	
1-3/4"	.120	RING	GRCR5DRGAL	7.2M	

Hot Dipped Galvanized

LENGTH	SHANK DIAMETER	SHANK	SKU	PCS./BOX	PLASTIC TUB
3/4"	.120	SMOOTH	GRCR19DHDG	7.2M	
3/4"	.120	RING	GRCR19DRHG	7.2M	
7/8"	.120	SMOOTH	GRCR2DCHDG	7.2M	
7/8"	.120	RING	GRCR2DCRHG	7.2M	
1"	.120	SMOOTH	GRCR2DHDG	7.2M	
1"	.120	RING	GRCR2DRHDG	7.2M	
1-1/4"	.120	SMOOTH	GRCR3DHDG	7.2M	
1-1/4"	.120	RING	GRCR3DRHDG	7.2M	
1-1/2"	.120	SMOOTH	GRCR4DHDG	7.2M	
1-1/2"	.120	RING	GRCR4DRHDG	7.2M	
1-3/4"	.120	SMOOTH	GRCR5DHDG	7.2M	
1-3/4"	.120	RING	GRCR5DRHDG	7.2M	

#304 Stainless Steel

LENGTH	SHANK DIAMETER	SHANK	SKU	PCS./BOX	PLASTIC TUB
3/4"	.120	SMOOTH	MAXC62862	7.2M	
3/4"	.120	RING	MAXC62863	3.6M	
3/4"	.120	RING	MAXC62864	7.2M	
7/8"	.120	RING	MAXC62868	3.6M	
7/8"	.120	RING	MAXC62869	7.2M	
1"	.120	SMOOTH	MAXC62842	7.2M	
1"	.120	RING	MAXC62845	3.6M	
1"	.120	RING	MAXC62843	7.2M	
1-1/4"	.120	SMOOTH	MAXC62852	7.2M	
1-1/4"	.120	RING	MAXC62873	600	•
1-1/4"	.120	RING	MAXC62853	3.6M	
1-1/4"	.120	RING	MAXC62854	7.2M	
1-1/2"	.120	SMOOTH	MAXC62847	7.2M	
1-1/2"	.120	RING	MAXC62871	600	•
1-1/2"	.120	RING	MAXC62848	3.6M	
1-1/2"	.120	RING	MAXC62849	7.2M	
1-3/4"	.120	SMOOTH	MAXC62856	3.6M	
1-3/4"	.120	RING	MAXC62858	3.6M	
1-3/4"	.120	RING	MAXC62859	7.2M	

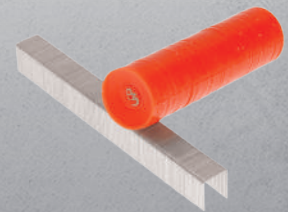
#316 Stainless Steel

LENGTH	SHANK DIAMETER	SHANK	SKU	PCS./BOX	PLASTIC TUB
1-1/4"	.120	RING	MAXC62855	3.6M	
1-1/2"	.120	RING	MAXC62850	3.6M	
1-3/4"	.120	RING	MAXC62860	3.6M	



Laser Welded Plastic Cap & Staples

For best results, use with Grip-Rite®
GRC58A Plastic Cap Stapler. pgs. 18-19



Electrogalvanized

LENGTH	CROWN	CAP SIZE	SKU	PCS./BOX	PLASTIC TUB
5/8"	1/2"	1"	GRCP5822L	2,200	•

STAPLES

18^{GA}
 NARROW CROWN
 STAPLE

"L"-style Narrow Crown Staples

For best results, use with Grip-Rite®
 GRTSN150 1/4" Narrow Crown Stapler. pg. 21



Electrogalvanized

LENGTH	GAUGE	CROWN	SKU	PCS./BOX	BELT CLIP
1/2"	18	1/4"	GRL08M	1M	•
1/2"	18	1/4"	GRL08	5M	
5/8"	18	1/4"	GRL10M	1M	•
5/8"	18	1/4"	GRL10	5M	
3/4"	18	1/4"	GRL11M	1M	•
3/4"	18	1/4"	GRL114M	4M	
3/4"	18	1/4"	GRL11	5M	
7/8"	18	1/4"	GRL12M	1M	•
7/8"	18	1/4"	GRL12	5M	
1"	18	1/4"	GRL13M	1M	•
1"	18	1/4"	GRL134M	4M	
1"	18	1/4"	GRL13	5M	
1"	18	1/4"	GRM13	5M	
1-1/8"	18	1/4"	GRL14M	1M	•
1-1/8"	18	1/4"	GRL14	5M	
1-1/4"	18	1/4"	GRL15M	1M	•
1-1/4"	18	1/4"	GRL154M	4M	
1-1/4"	18	1/4"	GRL15	5M	
1-1/2"	18	1/4"	GRL17M	1M	•
1-1/2"	18	1/4"	GRL174M	4M	
1-1/2"	18	1/4"	GRL17	5M	
3/4", 1/2", 1"-300 each	18	1/4"	GRLMIX	900	•

#304 Stainless Steel

LENGTH	GAUGE	CROWN	SKU	PCS./BOX	BELT CLIP
1-1/4"	18	1/4"	MAXB64888	1M	•
1-1/4"	18	1/4"	GRL15SS	5M	
1-1/2"	18	1/4"	MAXB64889	1M	•
1-1/2"	18	1/4"	GRL17SS	5M	

#316 Stainless Steel

LENGTH	GAUGE	CROWN	SKU	PCS./BOX	BELT CLIP
1-1/4"	18	1/4"	MAXB64911	500	•
1-1/2"	18	1/4"	MAXB64912	500	•

18^{GA}
 STAPLE

"SX"-style Narrow Crown Staples



Electrogalvanized

LENGTH	GAUGE	SHANK	SKU	PCS./BOX	BELT CLIP
1/2"	18	7/32"	GRSX12GM	1M	•
1/2"	18	7/32"	GRSX12G	5M	
5/8"	18	7/32"	GRSX58GM	1M	•
3/4"	18	7/32"	GRSX34GM	1M	•
3/4"	18	7/32"	GRSX34G	5M	
7/8"	18	7/32"	GRSX78GM	1M	•
7/8"	18	7/32"	GRSX78G	5M	
1"	18	7/32"	GRSX1GM	1M	•
1"	18	7/32"	GRSX1G	5M	
1-1/8"	18	7/32"	GRSX118GM	1M	•
1-1/8"	18	7/32"	GRSX118G	5M	
1-3/16"	18	7/32"	GRSX1316GM	1M	•
1-3/16"	18	7/32"	GRSX1316G	5M	
1-1/4"	18	7/32"	GRSX114GM	1M	•
1-1/4"	18	7/32"	GRSX114G	5M	

Electrogalvanized

LENGTH	GAUGE	SHANK	SKU	PCS./BOX	BELT CLIP
1-3/8"	18	7/32"	GRSX138GM	1M	•
1-3/8"	18	7/32"	GRSX138G	5M	
1-1/2"	18	7/32"	GRSX112GM	1M	•
1-1/2"	18	7/32"	GRSX112G	5M	



STAPLES

16_{GA}
MEDIUM CROWN
STAPLE

"N"-style Medium Crown Staples

For best results, use with Grip-Rite®
GRTSM2016C 7/16" Medium Crown Stapler. pg. 20

**Electrogalvanized**

LENGTH	GAUGE	CROWN	SKU	PCS./BOX	BELT CLIP
7/8"	16	7/16"	GRN12	10M	
1"	16	7/16"	GRN13	10M	
1-1/8"	16	7/16"	GRN14	10M	
1-1/4"	16	7/16"	GRN155M	5M	
1-1/4"	16	7/16"	GRN15	10M	
1-1/2"	16	7/16"	GRN175M	5M	
1-1/2"	16	7/16"	GRN17	10M	
1-3/4"	16	7/16"	GRN19	10M	
2"	16	7/16"	GRN215M	5M	
2"	16	7/16"	GRN21	10M	

#304 Stainless Steel

LENGTH	GAUGE	CROWN	SKU	PCS./BOX	BELT CLIP
1-1/4"	16	7/16"	MAXB64890	500	•
1-1/4"	16	7/16"	GRN15SS	10M	
1-1/2"	16	7/16"	MAXB64891	500	•
1-1/2"	16	7/16"	GRN17SS	10M	
1-3/4"	16	7/16"	GRN19SS	10M	
2"	16	7/16"	MAXB64892	420	•
2"	16	7/16"	GRN21SS	10M	

#316 Stainless Steel

LENGTH	GAUGE	CROWN	SKU	PCS./BOX	BELT CLIP
1-1/4"	16	7/16"	MAXB64913	500	•
1-1/2"	16	7/16"	MAXB64914	500	•
2"	16	7/16"	MAXB64915	420	•

16_{GA}
MEDIUM CROWN
STAPLE

"76"-style Medium Crown Staples**Electrogalvanized**

LENGTH	GAUGE	CROWN	SKU	PCS./BOX	BELT CLIP
1"	16	7/16"	GR7632	10M	
1-1/4"	16	7/16"	GR7640	10M	
1-1/2"	16	7/16"	GR7648	10M	
2"	16	7/16"	GR7664	10M	

#304 Stainless Steel

LENGTH	GAUGE	CROWN	SKU	PCS./BOX	BELT CLIP
1-1/4"	16	7/16"	MAXB64893	500	
1-1/2"	16	7/16"	MAXB64894	500	

#316 Stainless Steel

LENGTH	GAUGE	CROWN	SKU	PCS./BOX	BELT CLIP
1-1/4"	16	7/16"	MAXB64916	500	
1-1/2"	16	7/16"	MAXB64917	500	

STAPLES

16_{GA}
MEDIUM CROWN
STAPLE

"GS"-style Medium Crown Staples



Electrogalvanized

LENGTH	GAUGE	CROWN	SKU	PCS./BOX	BELT CLIP
1"	16	1/2"	GRGS161	10M	
1-1/4"	16	1/2"	GRGS16114	10M	
1-1/2"	16	1/2"	GRGS16112	10M	
1-3/4"	16	1/2"	GRGS16134	10M	
2"	16	1/2"	GRGS162	10M	

#304 Stainless Steel

LENGTH	GAUGE	CROWN	SKU	PCS./BOX	BELT CLIP
1-1/4"	16	1/2"	GRGS16114S	10M	
1-1/2"	16	1/2"	GRGS16112S	10M	
1-3/4"	16	1/2"	GRGS16134S	10M	
2"	16	1/2"	GRGS162SS	10M	

16_{GA}
MEDIUM CROWN
STAPLE

"BCS"-style Medium Crown Staples



Electrogalvanized

LENGTH	GAUGE	CROWN	SKU	PCS./BOX	BELT CLIP
1-1/4"	16	1/2"	GRBCS1107	10M	
1-1/2"	16	1/2"	GRBCS1109	10M	
1-3/4"	16	1/2"	GRBCS1111	10M	
2"	16	1/2"	GRBCS1112	10M	

FS
FLOORING STAPLE

15-1/2 Gauge Flooring Staples



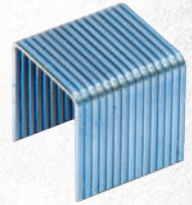
Electrogalvanized

LENGTH	CROWN	SKU	PCS./BOX	BELT CLIP
1-1/2"	1/2"	GRBCS1512	5M	
2"	1/2"	GRBCS1516	5M	

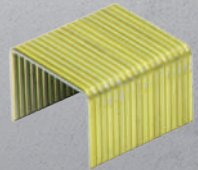
STAPLES

16_{GA}
WIDE CROWN
STAPLE
"BCS"-style Wide Crown Staples**Electrogalvanized**

LENGTH	GAUGE	CROWN	SKU	PCS./BOX
3/4"	16	15/16"	GRBCS1097	10M
7/8"	16	15/16"	GRBCS1098	10M
1"	16	15/16"	GRBCS1099	10M
1-1/4"	16	15/16"	GRBCS1101	10M
1-1/2"	16	15/16"	GRBCS1102	10M
1-3/4"	16	15/16"	GRBCS1116	10M
2"	16	15/16"	GRBCS1117	10M

16_{GA}
WIDE CROWN
STAPLE
"GSW"-style Wide Crown Staples**Electrogalvanized**

LENGTH	GAUGE	CROWN	SKU	PCS./BOX
5/8"	16	15/16"	GRGSW1658	10M
3/4"	16	15/16"	GRGSW1634	10M
7/8"	16	15/16"	GRGSW1678	10M
1"	16	15/16"	GRGSW161	10M
1-1/4"	16	15/16"	GRGSW16114	10M
1-1/2"	16	15/16"	GRGSW16112	10M
1-3/4"	16	15/16"	GRGSW16134	10M
2"	16	15/16"	GRGSW162	10M

16_{GA}
WIDE CROWN
STAPLE
"P"-style Wide Crown Staples**Electrogalvanized**

LENGTH	GAUGE	CROWN	SKU	PCS./BOX
3/4"	16	1"	GRP11	10M
7/8"	16	1"	GRP12	10M
1"	16	1"	GRP13	10M
1-1/4"	16	1"	GRP15	10M
1-1/2"	16	1"	GRP17	10M
1-3/4"	16	1"	GRP19	10M
2"	16	1"	GRP21	10M

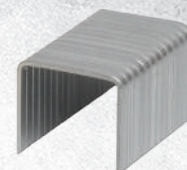
STAPLES

A11

TACKER

"A11"-style Tacker Staples

For best results, use with Grip-Rite®
GRR11 or GRR11C Tacker Stapler. pg. 22



Electrogalvanized

LENGTH	CROWN	BOX	PCS./BOX
1/4"	3/8"	GRA1114	5M
5/16"	3/8"	GRA11516	5M
3/8"	3/8"	GRA1138125	1.25M
3/8"	3/8"	GRA1138	5M
1/2"	3/8"	GRA1112	5M

#304 Stainless Steel

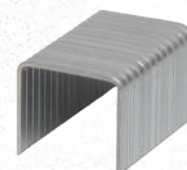
LENGTH	CROWN	BOX	PCS./BOX
3/8"	3/8"	GRA1138SS	5M

50

TACKER

"50"-style Tacker Staples

For best results, use with Grip-Rite®
GRR50BL Tacker Stapler. pg. 22



Electrogalvanized

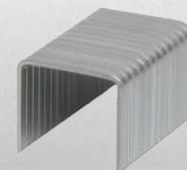
LENGTH	CROWN	SKU	PCS./BOX
1/4"	1/2"	GR50814C	5M
5/16"	1/2"	GR5010516C	5M
3/8"	1/2"	GR501238C	5M

A19

TACKER

"A19"-style Tacker Staples

For best results, use with Grip-Rite®
GRR19 Tacker Stapler. pg. 22



Electrogalvanized

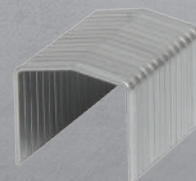
LENGTH	CROWN	SKU	PCS./BOX
1/4"	3/8"	GRA1914	5M

SHCR

TACKER

STAPLES

"SHCR"-style Tacker Staples



Electrogalvanized

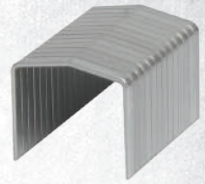
LENGTH	CROWN	SKU	PCS./BOX
3/8"	3/8"	GRSHCR38	5M



STAPLES

STCR

TACKER

"STCR"-style Tacker Staples**Electrogalvanized**

LENGTH	CROWN	SKU	PCS./BOX
1/4"	7/16"	GRSTCR14	5M
3/8"	7/16"	GRSTCR38	5M
5/16"	7/16"	GRSTCR516	5M

FC

16 GA
FLOORING CLEAT

FLOORING CLEATS

16 Gauge "L"-Hardwood Flooring Cleats**Electrogalvanized**

LENGTH	GAUGE	SKU	PCS./BOX
1-1/2"	16	GRFLN150	1M
2"	16	GRFLN200	1M

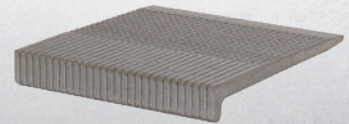
#304 Stainless Steel

LENGTH	GAUGE	SKU	PCS./BOX
2"	16	MAXCLCLEAT	1M
2"	16	MAXCTCLEAT	1M

FC

18 GA
FLOORING CLEAT

FLOORING CLEATS

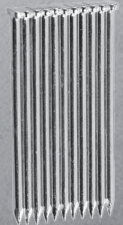
18 Gauge "L"-Hardwood Flooring Cleats**Electrogalvanized**

LENGTH	GAUGE	SKU	PCS./BOX
1-1/2"	18	GRFLN18150	1M
1-3/4"	18	GRFLN18175	1M

CN

CONCRETE T-NAIL

CONCRETE

Concrete T-Nails**Electrogalvanized**

LENGTH	GAUGE	SKU	PCS./BOX
9/16"	.097	GRBT484GXH	2.5M
5/8"	.097	GRBT461XH	2.5M
1-3/8"	.097	GRBT499XH	2.5M
2-1/4"	.097	GRBT481XH	2.5M



FINISH

15_{GA}
 ANGLED NAIL

"DA"-style Angled Finish Nails



Bright Coated

LENGTH	GAUGE	SKU	PCS./BOX	BELT CLIP
1-1/4"	15	GRDA15L	4M	
1-1/2"	15	GRDA17L	4M	
1-3/4"	15	GRDA19L	4M	
2"	15	GRDA21L	4M	
2-1/4"	15	GRDA23L	4M	
2-1/2"	15	GRDA25L	4M	

Electrogalvanized

LENGTH	GAUGE	SKU	PCS./BOX	BELT CLIP
1-1/4"	15	GRDA15GLM	1M	•
1-1/4"	15	GRDA15GL	4M	
1-1/2"	15	GRDA17GLM	1M	•
1-1/2"	15	GRDA17GL	4M	
1-3/4"	15	GRDA19GLM	1M	•
1-3/4"	15	GRDA19GL	4M	
2"	15	GRDA21GLM	1M	•
2"	15	GRDA21GL	4M	
2-1/4"	15	GRDA23GLM	1M	•
2-1/4"	15	GRDA23GL	4M	
2-1/2"	15	GRDA25GLM	1M	•
2-1/2"	15	GRDA25GL	4M	

#304 Stainless Steel

LENGTH	GAUGE	SKU	PCS./BOX	BELT CLIP
1-1/4"	15	GRDA15SSL	4M	
1-1/2"	15	MAXB64879	1M	•
1-1/2"	15	GRDA17SSL	4M	
2"	15	MAXB64880	1M	•
2"	15	GRDA21SSL	4M	
2-1/2"	15	MAXB64881	1M	•
2-1/2"	15	GRDA25SSL	4M	

#316 Stainless Steel

LENGTH	GAUGE	SKU	PCS./BOX	BELT CLIP
1-1/2"	15	MAXB64902	500	•
1-1/2"	15	GRDA17S16	4M	
2"	15	MAXB64903	500	•
2"	15	GRDA21S16	4M	
2-1/2"	15	MAXB64904	500	•
2-1/2"	15	GRDA25S16	4M	

15_{GA}
 ANGLED NAIL

"FN"-style Angled Finish Nails



Electrogalvanized

LENGTH	GAUGE	SKU	PCS./BOX	BELT CLIP
1-1/4"	15	GRFN1520M	1M	•
1-1/4"	15	GRFN1520	3.65M	
1-1/2"	15	GRFN1524M	1M	•
1-1/2"	15	GRFN1524	3.65M	
1-3/4"	15	GRFN1528M	1M	•
2"	15	GRFN1532M	1M	•
2"	15	GRFN1532	3.65M	
2-1/2"	15	GRFN1540M	1M	•
2-1/2"	15	GRFN1540	3.65M	

#304 Stainless Steel

LENGTH	GAUGE	SKU	PCS./BOX	BELT CLIP
1-1/2"	15	MAXB64882	1M	•
1-1/2"	15	GRFN1524SS	3.65M	
2"	15	MAXB64883	1M	•
2"	15	GRFN1532SS	3.65M	
2-1/2"	15	MAXB64884	1M	•
2-1/2"	15	GRFN1540SS	3.65M	

#316 Stainless Steel

LENGTH	GAUGE	SKU	PCS./BOX	BELT CLIP
1-1/2"	15	MAXB64905	500	•
2"	15	MAXB64906	500	•
2-1/2"	15	MAXB64907	500	•





FINISH

16
GA
STRAIGHT NAIL

Straight Finish Nails

For best results, use with Grip-Rite®
GRFTN250 16 Gauge Finish Nailer. pg. 24



Electrogalvanized

LENGTH	GAUGE	SKU	PCS./BOX	BELT CLIP
3/4"	16	GRF1634M	1M	•
3/4"	16	GRF1634	2.5M	
7/8"	16	GRF1678	2.5M	
1"	16	GRF1611M	1M	•
1"	16	GRF161	2.5M	
1-1/4"	16	GRF16114M	1M	•
1-1/4"	16	GRF161142M	2M	
1-1/4"	16	GRF16114	2.5M	
1-1/4"	16	GRF161144M	4M	
1-1/2"	16	GRF16112M	1M	•
1-1/2"	16	GRF161122M	2M	
1-1/2"	16	GRF16112	2.5M	
1-1/2"	16	GRF161124M	4M	
1-3/4"	16	GRF16134M	1M	•
1-3/4"	16	GRF161342M	2M	
1-3/4"	16	GRF16134	2.5M	
1-3/4"	16	GRF161344M	4M	
2"	16	GRF162M	1M	•
2"	16	GRF1622M	2M	
2"	16	GRF162	2.5M	
2"	16	GRF1624M	4M	
2-1/4"	16	GRF16214M	1M	•
2-1/4"	16	GRF16214	2.5M	
2-1/2"	16	GRF16212M	1M	•
2-1/2"	16	GRF162122M	2M	
2-1/2"	16	GRF16212	2.5M	
2-1/2"	16	GRF162124M	4M	

Electrogalvanized

LENGTH	GAUGE	SKU	PCS./BOX	BELT CLIP
1-1/4", 2", 2-1/2"-300 each	16	GRF16MIX	900	•

#304 Stainless Steel

LENGTH	GAUGE	SKU	PCS./BOX	BELT CLIP
1-1/4"	16	GRF16114SS	2.5M	
1-1/2"	16	MAXB64872	1M	•
1-1/2"	16	GRF16112SS	2.5M	
2"	16	MAXB64873	1M	•
2"	16	GRF162SS	2.5M	
2-1/2"	16	MAXB64874	1M	•
2-1/2"	16	GRF16212SS	2.5M	

#316 Stainless Steel

LENGTH	GAUGE	SKU	PCS./BOX	BELT CLIP
1-1/4"	16	GF16114S16	2.5M	
1-1/2"	16	MAXB64895	500	•
1-1/2"	16	GF16112S16	2.5M	
2"	16	MAXB64896	500	•
2"	16	GF162S16	2.5M	
2-1/2"	16	MAXB64897	500	•
2-1/2"	16	GF16212S16	2.5M	


16
GA
ANGLED NAIL

Angled Finish Nails

Electrogalvanized

LENGTH	GAUGE	SKU	PCS./BOX	BELT CLIP
1-1/2"	16	GRAF112M	1M	•
1-1/2"	16	GRAF112	2M	
2"	16	GRAF2M	1M	•
2"	16	GRAF2	2M	
2-1/2"	16	GRAF212M	1M	•
2-1/2"	16	GRAF212	2M	

#304 Stainless Steel

LENGTH	GAUGE	SKU	PCS./BOX	BELT CLIP
1-1/2"	16	MAXB64885	1M	•
1-1/2"	16	GRAF112SS	2M	
2"	16	MAXB64886	1M	•
2"	16	GRAF2SS	2M	
2-1/2"	16	MAXB64887	1M	•
2-1/2"	16	GRAF212SS	2M	

#316 Stainless Steel

LENGTH	GAUGE	SKU	PCS./BOX	BELT CLIP
1-1/2"	16	MAXB64908	500	•
1-1/2"	16	GRAF112S16	2M	
2"	16	MAXB64909	500	•
2"	16	GRAF2S16	2M	
2-1/2"	16	MAXB64910	500	•
2-1/2"	16	GRAF212S16	2M	

FINISH


18_{GA}
BRAD NAIL
Brad Nails

For best results, use with Grip-Rite®
GRTBN200N 18 Gauge Brad Nailer. pg. 25

Electrogalvanized

LENGTH	GAUGE	SKU	PCS./BOX	BELT CLIP
5/8"	18	GRF1858M	1M	•
5/8"	18	GRF1858	5M	
3/4"	18	GRF1834M	1M	•
3/4"	18	GRF1834	5M	
1"	18	GRF181M	1M	•
1"	18	GRF181	5M	
1-1/8"	18	GRF18118M	1M	•
1-1/8"	18	GRF18118	5M	
1-3/16"	18	GRF181316M	1M	•
1-3/16"	18	GRF181316	5M	
1-1/4"	18	GRF18114M	1M	•
1-1/4"	18	GRF18114	5M	
1-1/2"	18	GRF18112M	1M	•
1-1/2"	18	GRF18112	5M	
1-3/4"	18	GRF18134M	1M	•
1-3/4"	18	GRF18134	5M	
2"	18	GRF182M	1M	•
2"	18	GRF182	5M	
1-1/4", 1.25, 2"- 300 each	18	GRF18MIX	900	•

#304 Stainless Steel

LENGTH	GAUGE	SKU	PCS./BOX	BELT CLIP
3/4"	18	GRF1834SS	5M	
1"	18	GRF181SS	5M	
1-1/4"	18	GRF18114SS	5M	
1-1/2"	18	GRF18112SS	5M	
2"	18	GRF182SS	5M	

#304 Stainless Steel

LENGTH	GAUGE	SKU	PCS./BOX	BELT CLIP
3/4"	18	GRF1834SS	5M	
1"	18	GRF181SS	5M	
1"	18	MAXB64875	1M	•
1-1/4"	18	MAXB64876	1M	•
1-1/4"	18	GRF18114SS	5M	
1-1/2"	18	MAXB64877	1M	•
1-1/2"	18	GRF18112SS	5M	
1-3/4"	18	GRF18134SS	5M	
2"	18	MAXB64878	1M	•
2"	18	GRF182SS	5M	

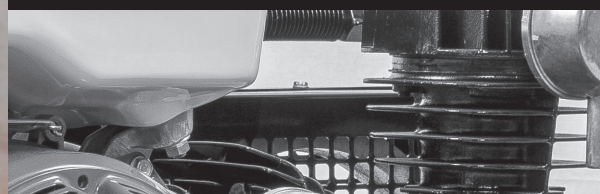
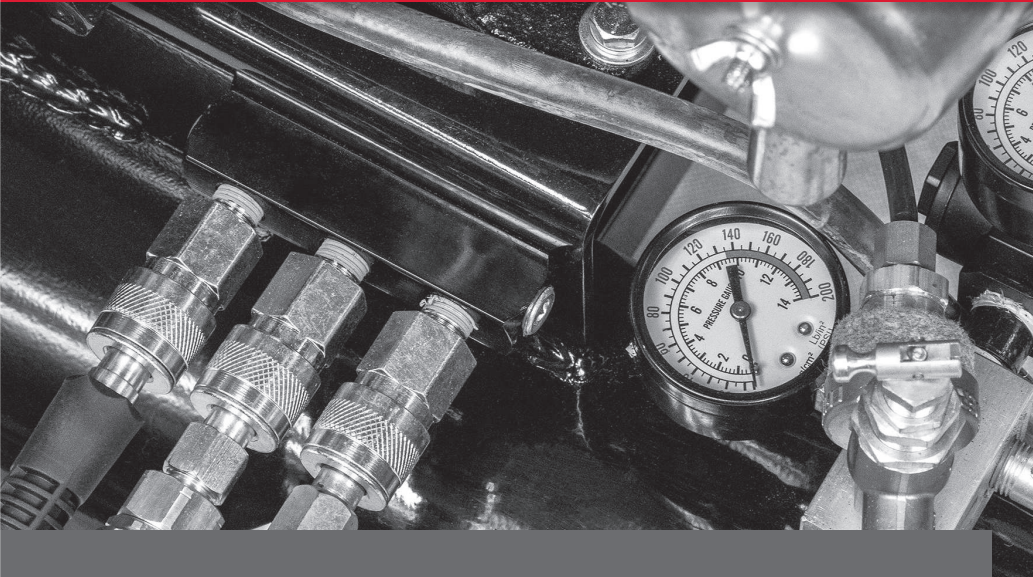
#316 Stainless Steel

LENGTH	GAUGE	SKU	PCS./BOX	BELT CLIP
1"	18	MAXB64898	500	•
1-1/4"	18	MAXB64899	500	•
1-1/2"	18	MAXB64900	500	•
2"	18	MAXB64901	500	•


23_{GA}
PIN NAIL
Headless Micropins**Electrogalvanized**

LENGTH	GAUGE	SKU	PCS./BOX
1/2"	23	GR12PIN	3M
5/8"	23	GR58PIN	3M
3/4"	23	GR34PIN	3M
1"	23	GR1PIN	3M
1-3/16"	23	GR1316PIN	3M
1-1/4"	23	GR114PIN1M	1M
5/8", 3/4", 1", 1-3/16"- 800 each	23	GRMIXPIN	3.2M

Compressors



1 GALLON ULTRA QUIET COMPRESSOR

HEIGHT: 13.40" | LENGTH: 14.60" | WIDTH: 14.20" | WEIGHT: 23 LB.

TOOL CAPACITY COMPARISON



Tool capacity can vary due to rate of actuation

Designed for trim, carpentry and other small projects.

FEATURES & BENEFITS

- Induction motor – 10x life over consumer grade units
- Oil free pump
- 4,000 hrs. life expectancy



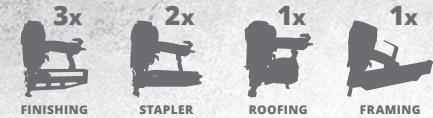
GR100/SPECIFICATIONS (1 YEAR WARRANTY)

Peak HP	1.0
Tank capacity	1 gal.
Motor type	Induction
Lubrication	Oil-free
Draw	5 amps
Decibels	69
On/Off PSI	95/125
CFM @ 90 PSI	0.6
Max PSI	135
Pump Up	50 seconds
Recovery	34 seconds



800-676-7777
www.grip-rite.com

TOOL CAPACITY COMPARISON



Tool capacity can vary due to rate of actuation

2 GALLON ULTRA QUIET COMPRESSOR

HEIGHT: 14.90" | LENGTH: 18.90" | WIDTH: 14.90" | WEIGHT: 37 LB.

Designed for small to mid-size projects.

FEATURES & BENEFITS

- Award winning – Fine Homebuilding Magazine #1 pick
- Induction motor – 10x life over consumer grade units
- Oil free pump
- 4,000 hrs. life expectancy

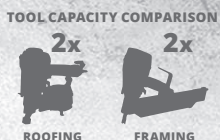


GR152CM/SPECIFICATIONS (1 YEAR WARRANTY)	
Peak HP	2.0
Tank capacity	2.0 gal.
Motor type	Induction
Lubrication	Oil-free
Draw	8 amps
Decibels	75
On/Off PSI	95/125
CFM @ 90 PSI	2.6
Max PSI	150
Pump Up	50 seconds
Recovery	10 seconds



4 GALLON ULTRA QUIET COMPRESSOR

HEIGHT: 20" | LENGTH: 23.60" | WIDTH: 22" | WEIGHT: 90 LB.



TOOL CAPACITY COMPARISON
Tool capacity can vary due to rate of actuation

Designed for mid-size to large projects.

FEATURES & BENEFITS

- Induction motor – 10x life over consumer grade units
- 10,000 hrs. life expectancy
- Quick recovery time - only 18 sec.



Quick recovery time

12 Amps - will not trip breakers

Roll cage design

Protects vital components

Ultra quiet

low rpm design

2 Quick connectors

For use with multiple tools

10" no-flat tires

Locking pull-out handle

For jobsite portability



GR2540LR/SPECIFICATIONS (1 YEAR LIMITED WARRANTY)

Peak HP	2.5
Tank capacity	4.0 gal.
Motor type	Induction
Lubrication	Oil
Draw	12 amps
Decibels	76
On/Off PSI	110/150
CFM @ 90 PSI	4.2
Max PSI	150
Pump Up	76 seconds
Recovery	18 seconds



800-676-7777
www.grip-rite.com

TOOL CAPACITY COMPARISON



Tool capacity can vary due to rate of actuation

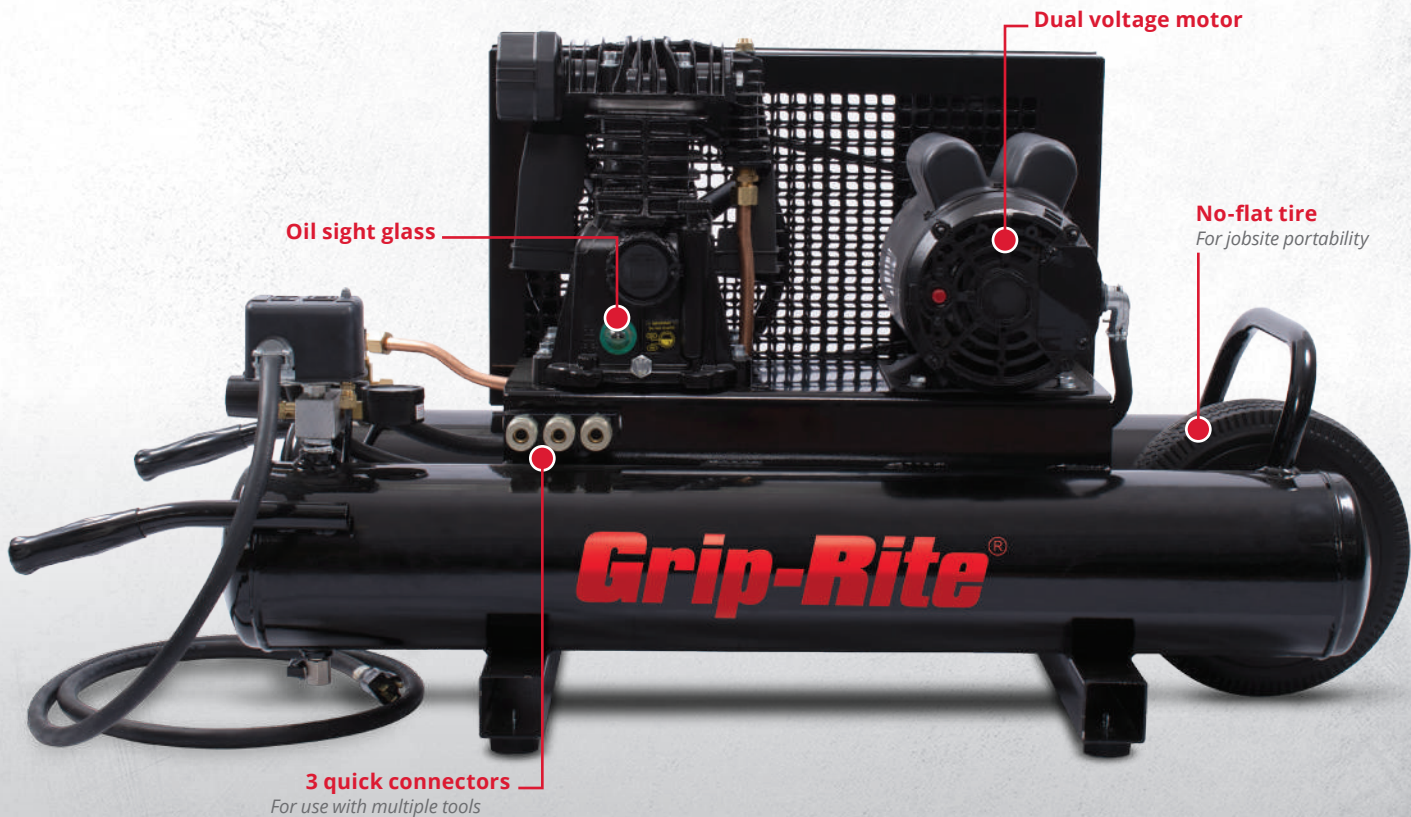
9 GALLON ELECTRIC WHEELBARROW COMPRESSOR

HEIGHT: 23" | LENGTH: 45" | WIDTH: 19" | WEIGHT: 162 LB.

Designed for large projects with multiple users.

FEATURES & BENEFITS

- Dual voltage capability
- Beefy 3/8" regulator
- Assembled in the USA
- 10,000 hrs. life expectancy



GR309EDV/SPECIFICATIONS (1 YEAR LIMITED WARRANTY)	
HP	1.5
Tank capacity	9.0 gal.
Motor type	Induction
Lubrication	Oil
Draw	115v @ 15 amps, 230v @ 7.5 amps,
Decibels	79
On/Off PSI	105-135
CFM @ 90 PSI	7.0
Max PSI	135
Pump Up	83 seconds
Recovery	19 seconds



9 GALLON GAS COMPRESSOR 5.5 HP

HEIGHT: 25" | LENGTH: 47" | WIDTH: 19" | WEIGHT: 198 LB.



FINISHING



STAPLER

TOOL CAPACITY COMPARISON



ROOFING



FRAMING

Tool capacity can vary due to rate of actuation

Designed for jobsite use where electricity is not available or there are multiple users.

FEATURES & BENEFITS

- No hassle belt tightening system
- 9 gallon tanks
- Beefy 3/8" regulator
- 3 coupler manifold included
- Industrial metal mufflers with "debris clear" design
- 10,000 hrs. life expectancy



Honda® gas engine w/low oil shut off
prevents damage to the motor

Oil sight glass

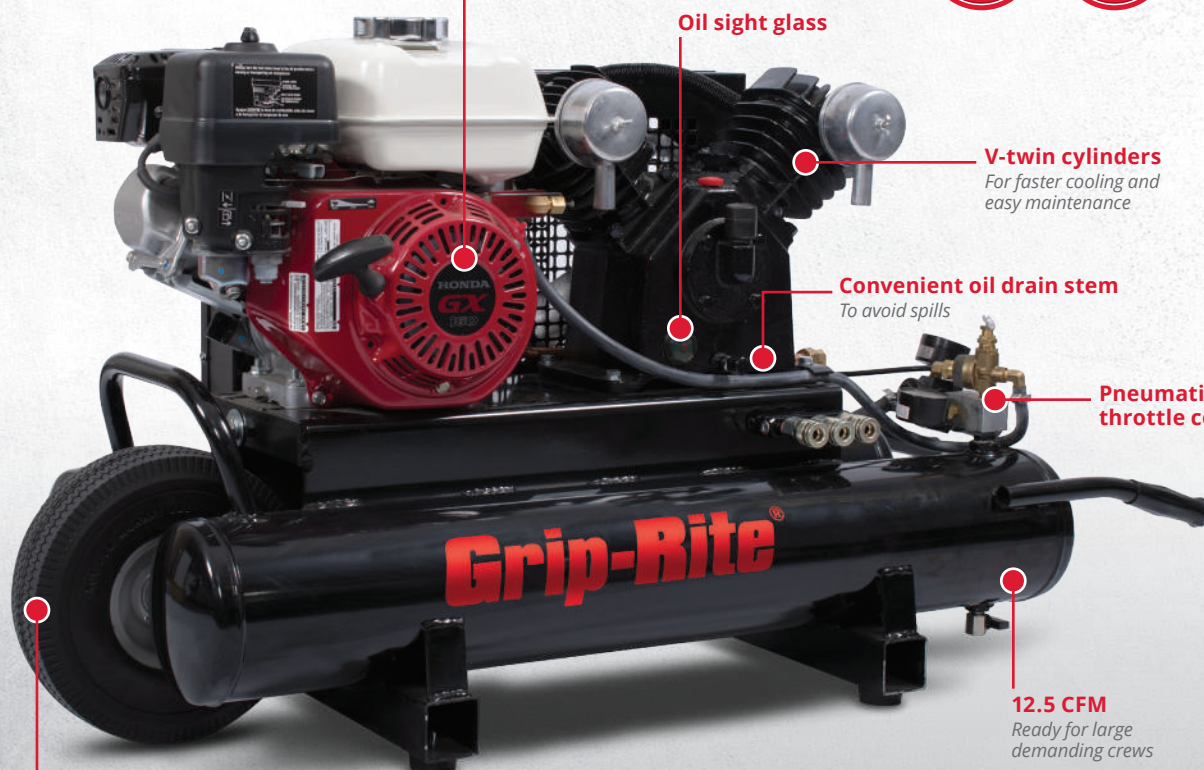
V-twin cylinders
For faster cooling and easy maintenance

Convenient oil drain stem
To avoid spills

Pneumatic throttle control

12.5 CFM
Ready for large demanding crews

No-flat tire
For jobsite portability



GR55G10X/SPECIFICATIONS (1 YEAR LIMITED WARRANTY)

HP	5.5
Tank capacity	9.0 gal.
Motor type	Pneumatic
Lubrication	Oil
Draw	N/A
Decibels	95
On/Off PSI	105/135
CFM @ 100 PSI	12.5
Max PSI	150
Pump Up	59 seconds
Recovery	15 seconds



800-676-7777
www.grip-rite.com

TOOL CAPACITY COMPARISON



Tool capacity can vary due to rate of actuation

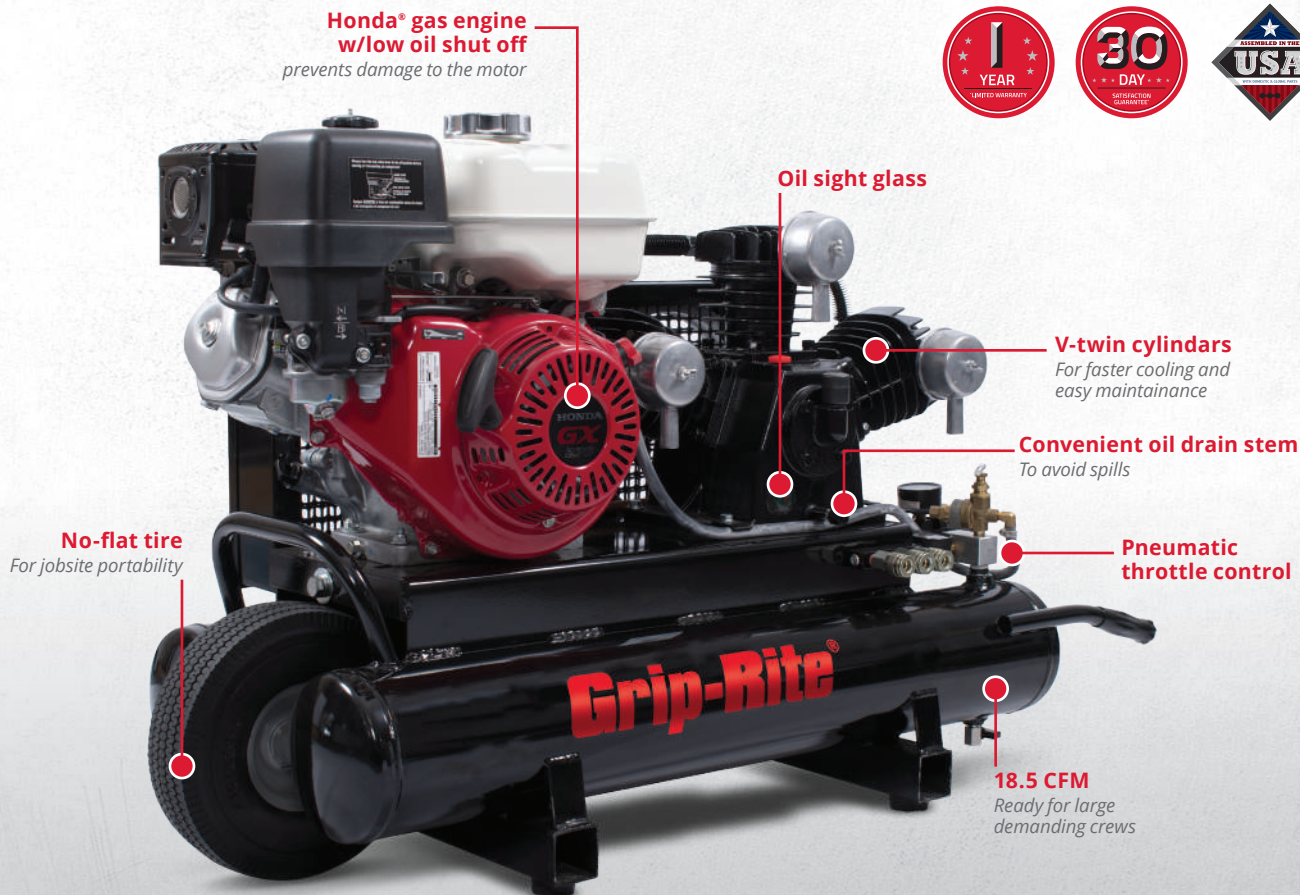
9 GALLON GAS COMPRESSOR 9HP

HEIGHT: 28" | LENGTH: 46" | WIDTH: 19" | WEIGHT: 246 LB.

Designed for jobsite use where electricity is not available or there are multiple users.

FEATURES & BENEFITS

- No hassle belt tightening system
- 9 gallon tanks
- Beefy 3/8" regulator
- 3 coupler manifold included
- Industrial metal mufflers with "debris clear" design
- 10,000 hrs. life expectancy



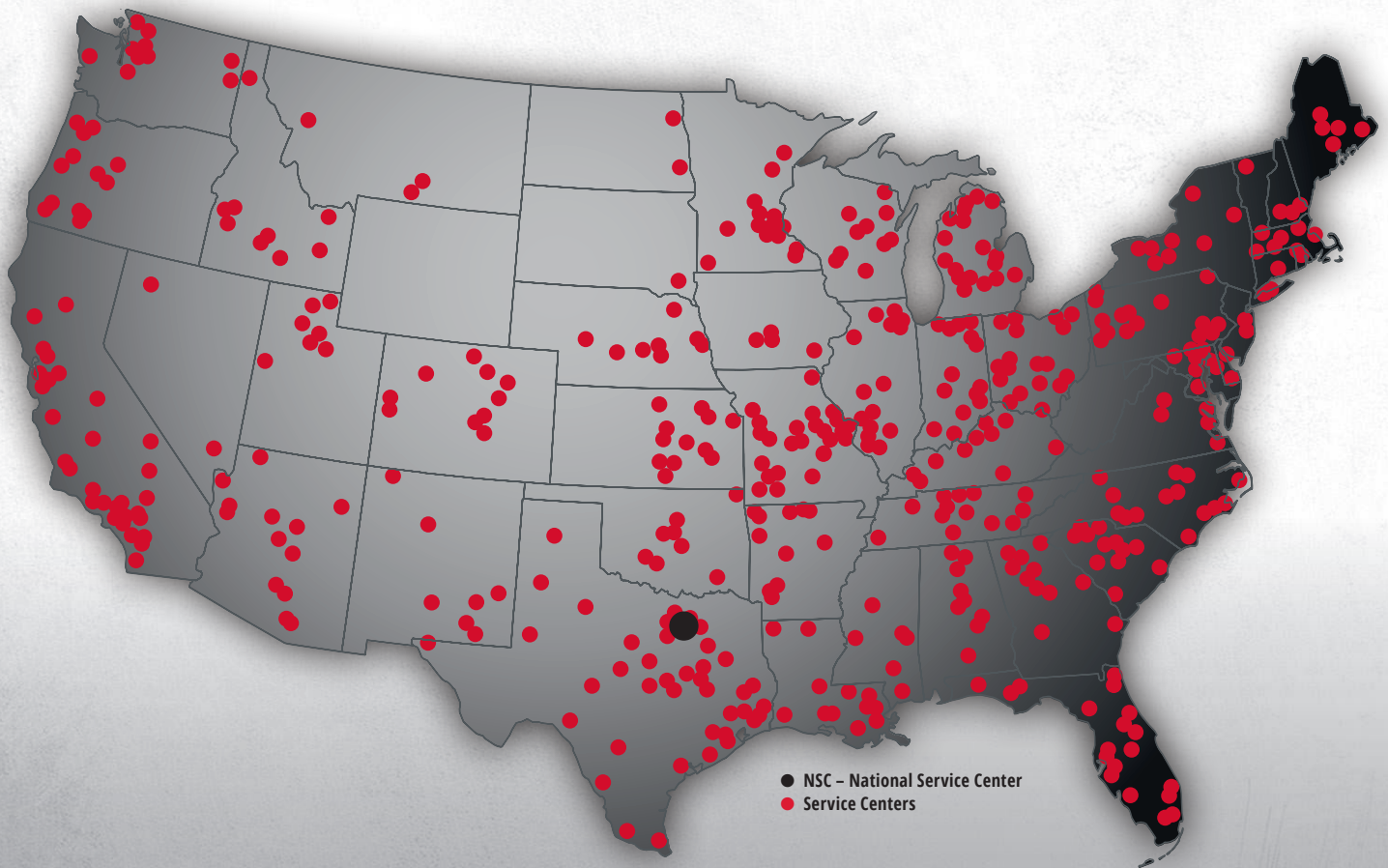
GR90G10X/SPECIFICATIONS (1 YEAR LIMITED WARRANTY)

HP	9.0
Tank capacity	9.0 gal.
Motor type	Pneumatic
Lubrication	Oil
Draw	N/A
Decibels	95
On/Off PSI	105/135
CFM @ 100 PSI	18.5
Max PSI	150
Pump Up	41 seconds
Recovery	10 seconds





READY. EVERY. DAY.



GRIP-RITE® SERVICE NETWORK

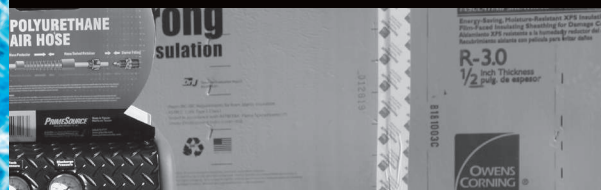
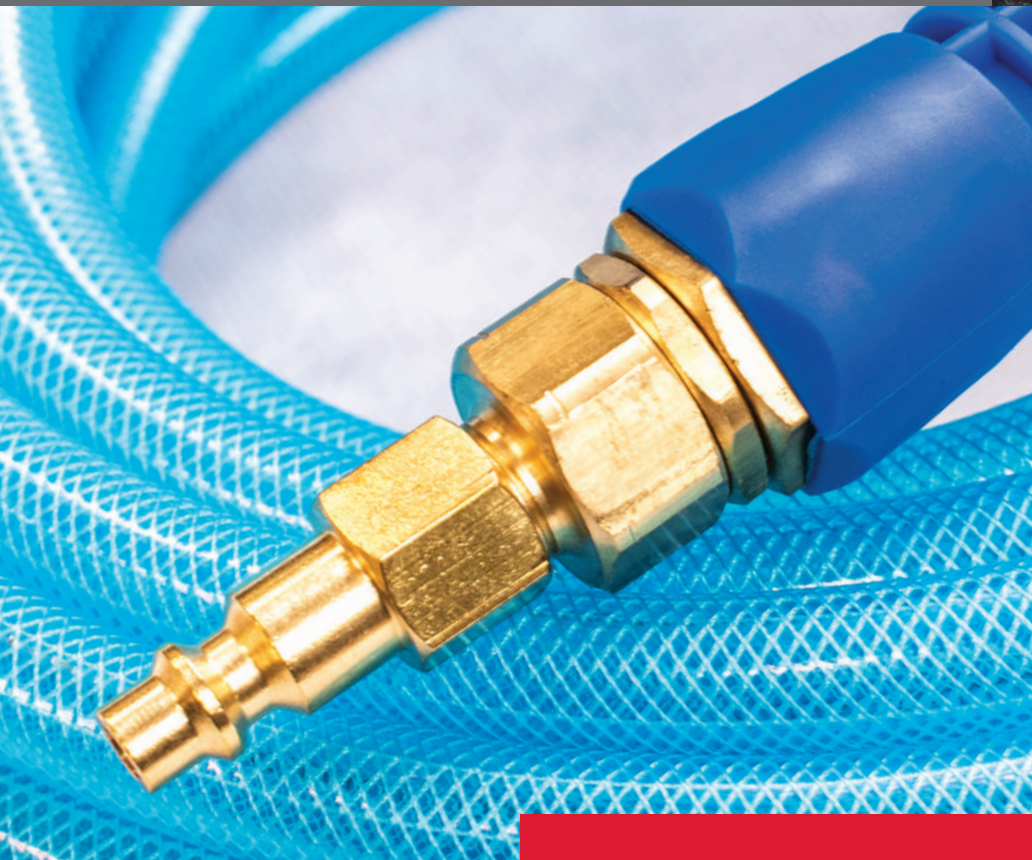
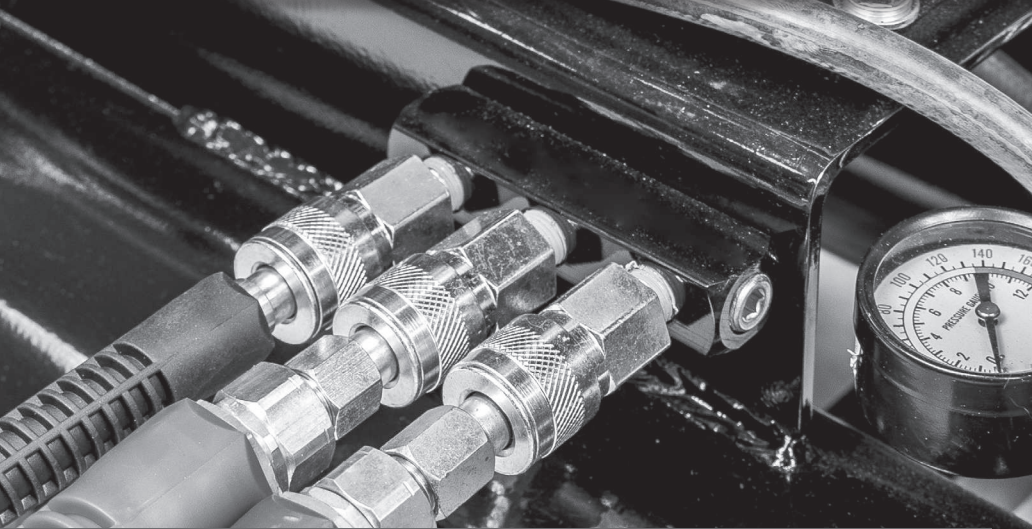
We promise to be here when you need us most. **Ready. Every. Day** is our mantra... and with nearly **700 service centers** currently in our network, we have the unique ability to respond to your needs quickly and efficiently. If we're not in your area today, we probably will be soon. Keep up with the latest additions on grip-rite.com or reach us directly at 800-676-7777.



800-676-7777
www.grip-rite.com

WE BUILD AMERICA®

Accessories



Polyurethane Air Hoses



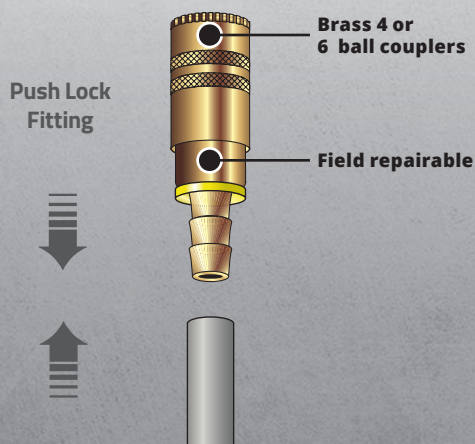
Our polyurethane & premium rubber air hoses feature easy field repairable setups.

FEATURES & BENEFITS

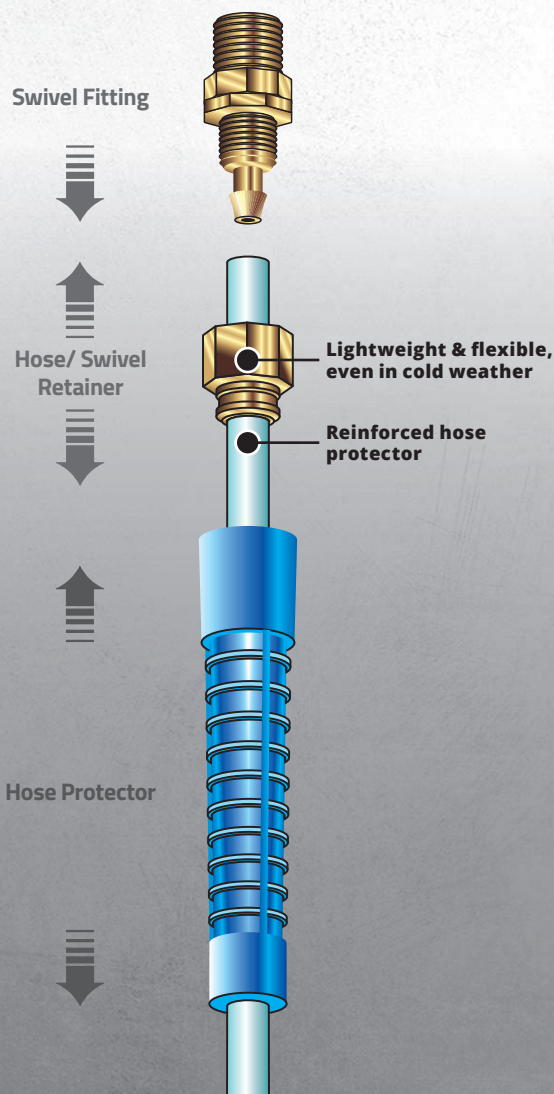
- Swivel fittings, coupler, and plug included
- Working PSI: 200 | Burst PSI: 800
- Field repairable
- Brass 4 or 6-ball coupler and male plug included
- 40% lighter than rubber & PVC hoses
- Flexible and lightweight
- Resists kinking
- Reinforced hose end protectors for durability
- Swivel ball-bearing fittings to reduce twisting
- Superior resistance to lubricating oil and grease
- One-year warranty



PREMIUM RUBBER AIR HOSES



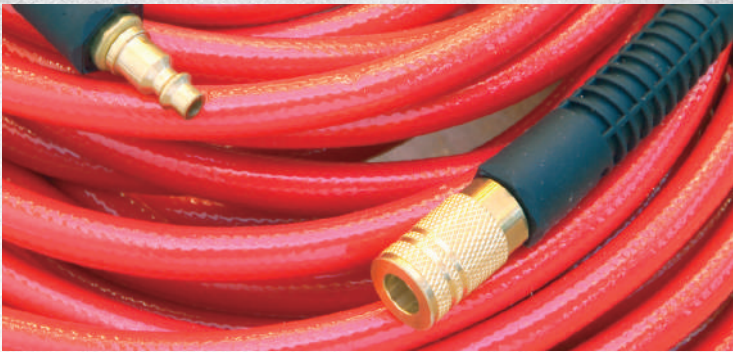
POLYURETHANE AIR HOSES



SKU	SIZE		COUPLER & PLUG INCLUDED
	DIAMETER	LENGTH	
GRPU1425C	1/4"	25 ft.	Yes
GRPU1450C	1/4"	50 ft.	Yes
GRPU14100C	1/4"	100 ft.	Yes
GRPU3825C	3/8"	25 ft.	Yes
GRPU3850C	3/8"	50 ft.	Yes
GRPU38100C	3/8"	100 ft.	Yes



800-676-7777
www.grip-rite.com

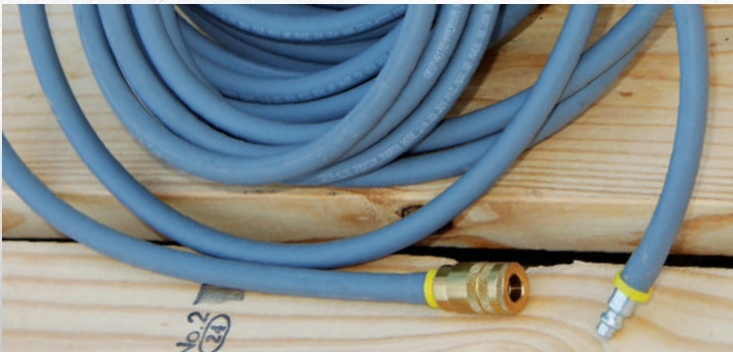


PVC Air Hoses

FEATURES & BENEFITS

- Coupler & plug included
- Working PSI: 300 | Burst PSI: 1200
- Brass 4 or 6 ball coupler and male plug included
- Flexible and lightweight
- Oil resistant PVC tubing
- Abrasion resistant PVC cover
- Temperature range: 0° to 150°F
- One-year warranty

SKU	SIZE		COUPLER & PLUG INCLUDED
	DIAMETER	LENGTH	
GRPVC1450C	1/4 in.	50 ft.	Yes
GRPVC1410C	1/4 in.	100 ft.	Yes
GRPVC3850C	3/8 in.	50 ft.	Yes
GRPVC3810C	3/8 in.	100 ft.	Yes



Premium Rubber Air Hoses

FEATURES & BENEFITS

- Push lock coupler & plug included
- Working PSI: 300 | Burst PSI: 1200
- Field repairable
- Push lock 4 or 6 ball coupler and plug included
- Flexible in cold weather
- Heavy duty reinforcing
- Abrasion resistant cover
- Temperature range: -40° to 212°F
- 4:1 burst ratio
- One-year warranty

SKU	SIZE		COUPLER & PLUG INCLUDED
	DIAMETER	LENGTH	
GRPRB1425C	1/4 in.	25 ft.	Yes
GRPRB1450C	1/4 in.	50 ft.	Yes
GRPRB1410C	1/4 in.	100 ft.	Yes
GRPRB14SPL	1/4 in.	200 ft.	No
GRPVRB3825C	3/8 in.	25 ft.	Yes
GRPRB3850C	3/8 in.	50 ft.	Yes
GRPRB3810C	3/8 in.	100 ft.	Yes
GRPRB38SPL	3/8 in.	200 ft.	No








Fittings


	SPECIFICATIONS			NTP		MATERIAL	CARDED	PACK COUNT	BULK	PACK COUNT	HIGH QUANTITY BULK	PACK COUNT
	SERIES	BODY SIZE	STYLE	SIZE	THREAD							
INDUSTRIAL PLUGS (2 count) 	I/M	1/4"	Plug	1/4"	Male	Steel	GRF14MPD	4	GRF14MPB	25	GRF14MPH	100
	I/M	1/4"	Plug	3/8"	Male	Steel	GRF14MPD2	4	GRF14MPB2	25	GRF14MPH2	100
	I/M	1/4"	Plug	1/4"	Female	Steel	GRF14FPD	4	GRF14FPB	25	GRF14FPH	100
	I/M	1/4"	Plug	3/8"	Female	Steel	GRF14FPD2	4	GRF14FPB2	25	GRF14FPH2	100
	I/M	3/8"	Plug	1/4"	Male	Steel	GRF38MPD	4	GRF38MPB	25	GRF38MPH	100
	I/M	3/8"	Plug	3/8"	Male	Steel	GRF38MPD2	4	GRF38MPB2	25	GRF38MPH2	100
	I/M	3/8"	Plug	1/4"	Female	Steel	GRF38FPD	4	GRF38FPB	25	GRF38FPH	100
	I/M	3/8"	Plug	3/8"	Female	Steel	GRF38FPD2	4	GRF38FPB2	25	GRF38FPH2	100
AUTOMOTIVE PLUGS (2 count) 	Auto	1/4"	Plug	1/4"	Female	Steel	GRF14FPAD	4	GRF14FPAB	25	—	—
	Auto	1/4"	Plug	1/4"	Male	Steel	GRF14MPAD	4	GRF14MPAB	25	—	—
	Auto	1/4"	Plug	3/8"	Male	Steel	GRF14MPAD2	4	—	—	—	—
	Auto	3/8"	Plug	1/4"	Male	Steel	GRF38MPAD	4	GRF38MPAB	25	—	—
	Auto	3/8"	Plug	3/8"	Male	Steel	GRF38MPAD2	4	—	—	—	—
INDUSTRIAL SWIVEL PLUGS 	I/M	1/4"	Plug	1/4"	Male	Steel	GRF14SPD	4	GRF14SPB	25	GRF14SPH	100
	I/M	1/4"	Plug	3/8"	Male	Steel	GRF14SPD2	4	GRF14SPB2	25	GRF14SPH2	100
	I/M	3/8"	Plug	1/4"	Male	Steel	GRF38SPD	4	GRF38SPB	25	GRF38SPH	100
	I/M	3/8"	Plug	3/8"	Male	Steel	GRF38SPD2	4	GRF38SPB2	25	GRF38SPH2	100
INDUSTRIAL COUPLERS 	I/M	1/4"	Coupler	1/4"	Male	Brass	GRF14MCID	4	GRF14MCIB	10	GRF14MCIH	50
	I/M	1/4"	Coupler	3/8"	Male	Brass	GRF14MCID2	4	GRF14MCIB2	10	GRF14MCIH2	50
	I/M	1/4"	Coupler	1/4"	Female	Brass	GRF14FCID	4	GRF14FCIB	10	GRF14FCIH	50
	I/M	1/4"	Coupler	3/8"	Female	Brass	GRF14FCID2	4	GRF14FCIB2	10	GRF14FCIH2	50
	I/M	3/8"	Coupler	1/4"	Male	Brass	GRF38MCID	4	GRF38MCIB	10	GRF38MCIH	50
	I/M	3/8"	Coupler	3/8"	Male	Brass	GRF38MCID2	4	GRF38MCIB2	10	GRF38MCIH2	50
	I/M	3/8"	Coupler	1/4"	Female	Brass	GRF38FCID	4	GRF38FCIB	10	GRF38FCIH	50
	I/M	3/8"	Coupler	3/8"	Female	Brass	GRF38FCID2	4	GRF38FCIB2	10	GRF38FCIH2	50
AUTOMOTIVE COUPLERS 	Auto	1/4"	Coupler	1/4"	Male	Brass	GRF14MCAD	4	GRF14MCAB	10	—	—
	Auto	1/4"	Coupler	1/4"	Female	Brass	GRF14FCAD	4	GRF14FCAB	10	—	—
	Auto	1/4"	Coupler	3/8"	Male	Brass	GRF14MCAD2	4	—	—	—	—
	Auto	3/8"	Coupler	1/4"	Male	Steel	GRS38MCAD	4	—	—	—	—
	Auto	3/8"	Coupler	3/8"	Male	Steel	GRS38MCAD2	4	—	—	—	—
	Auto	3/8"	Coupler	1/4"	Female	Steel	GRS38FCAD	4	—	—	—	—
UNIVERSAL COUPLERS 	I/M	1/4"	Coupler	1/4"	Male	Brass	GRF14MCD	4	GRF14MCUB	10	GRF14MCUH	50
	I/M	1/4"	Coupler	3/8"	Male	Brass	GRF14MCD2	4	GRF14MCUB2	10	GRF14MCUH2	50
	I/M	1/4"	Coupler	1/4"	Female	Brass	GRF14FCD	4	GRF14FCUB	10	GRF14FCUH	50
	I/M	1/4"	Coupler	3/8"	Female	Brass	GRF14FCD2	4	GRF14FCUB2	10	GRF14FCUH2	50
	I/M	3/8"	Coupler	1/4"	Male	Brass	GRF38MCD	4	GRF38MCUB	10	GRF38MCUH	50
	I/M	3/8"	Coupler	3/8"	Male	Brass	GRF38MCD2	4	GRF38MCUB2	10	GRF38MCUH2	50
	I/M	3/8"	Coupler	1/4"	Female	Brass	GRF38FCD	4	GRF38FCUB	10	GRF38FCUH	50
	I/M	3/8"	Coupler	3/8"	Female	Brass	GRF38FCD2	4	GRF38FCUB2	10	GRF38FCUH2	50

I/M=Industrial Milton; AUTO=Automotive; U=Universal; NPT=National Pipe Thread Tapered Thread

Fittings



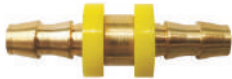
	SPECIFICATIONS			NPT SIZE	MATERIAL	CARDED	PACK COUNT	BULK	PACK COUNT
	SERIES	BODY SIZE	STYLE						
MANIFOLDS & SPLITTERS 	—	1/4"	Round Manifold – 1/4" in x 1/4" out	1/4"	Aluminum	GR14MAND	4	—	—
	—	1/4"	Round Manifold – 3/8" in x 1/4" out	1/4"	Aluminum	GR38MAND	4	—	—
	I/M	1/4"	Tripod	1/4"	Coupler: Brass Plug: Steel	GR14SPLTD	4	—	—
	I/M	3/8"	Tripod	1/4"	Coupler: Brass Plug: Steel	GR38SPLTD	4	—	—
	I/M	1/4"	Flat	1/4"	Coupler: Brass Plug: Steel	GR14SPLTDF	4	—	—
	I/M	3/8"	Flat	1/4"	Coupler: Brass Plug: Steel	GR38SPLTDF	4	—	—
BARBED SPLICERS & CLAMPS 	—	1/4"	Splicer with 3 Clamps	—	Brass	GRF14BSPLD	4	—	—
	—	3/8"	Splicer with 3 Clamps	—	Brass	GRF38BSPLD	4	—	—
	—	11 mm	2 Ear O-Clamp	—	Steel	—	—	GRFOC11H	100
	—	13 mm	2 Ear O-Clamp	—	Steel	—	—	GRFOC13H	100
	—	15 mm	2 Ear O-Clamp	—	Steel	—	—	GRFOC15H	100
	—	17 mm	2 Ear O-Clamp	—	Steel	—	—	GRFOC17H	100
	HOSE SIZE	DESCRIPTION		NPT SIZE	MATERIAL	CARDED	PACK COUNT	BULK	PACK COUNT
POLYURETHANE AIR HOSE FITTINGS 	1/4"	Splicer		—	Brass	GRPU14SPLD	4	GRPU14SPLB	25
	3/8"	Splicer		—	Brass	GRPU38SPLD	4	GRPU38SPLB	25
	1/4"	Ball Bearing Replacement Fitting with Strain Revealer		1/4"	Brass	—	—	GRIPU14RFB	10
	3/8"	Ball Bearing Replacement Fitting with Strain Revealer		1/4"	Brass	—	—	GRIPU38RFB	10


	SPECIFICATIONS		NPT		MATERIAL	CARDED	PACK COUNT	BULK	PACK COUNT
	SERIES	BODY SIZE	SIZE	THREAD					
<div>Industrial Plug & Coupler Kits</div> <div></div>	2-PIECE KIT								
	I/M	1/4"	1/4"	Female: 1 x Coupler Male: 1 x Plug	Coupler: Brass Plug: Steel	GRFKIT14	—	—	4
	I/M	3/8"	1/4"	Female: 1 x Coupler Male: 1 x Plug	Coupler: Brass Plug: Steel	GRFKIT38	—	—	4
<div></div> <div></div>	5-PIECE KIT								
	I/M	1/4"	1/4"	Female: 1 x Coupler 1 x Plug Male: 3 x Plug	Coupler: Brass Plug: Steel	GRF14PCIK	—	—	4
	I/M	3/8"	1/4"	Female: 1 x Coupler 1 x Plug Male: 3 x Plug	Coupler: Brass Plug: Steel	GRF38PCIK	—	—	4


	SPECIFICATIONS		NPT		MATERIAL	CARDED	PACK COUNT	BULK	PACK COUNT
	BODY SIZE	STYLE	SIZE	THREAD					
Adapters 	1/4"	1/4" Female x 1/4" Female Adapter Fitting	1/4"	Female	Brass	GRF14FHTD	4	—	—
	1/4"	1/4" Male x 1/4" Male Adapter Fitting	1/4"	Male	Brass	GRF14MHTD	4	—	—
	3/8"	3/8" Female x 1/4" Male Reducer Fitting	1/4"	Male	Brass	GRF38MHTD	4	—	—


I/M=Industrial Milton; AUTO=Automotive; U=Universal; NPT=National Pipe Thread Tapered Thread

Fittings

	SPECIFICATIONS			HOSE SIZE	MATERIAL	CARDED	PACK COUNT	BULK	PACK COUNT	HIGH QUANTITY BULK	PACK COUNT
	SERIES	BODY SIZE	STYLE								
PUSH-LOCK PLUGS (2 count) 	I/M	1/4"	Plug	1/4"	Steel	GRF14PPD	4	GRF14PPB	25	GRF14PPH	100
	I/M	1/4"	Plug	3/8"	Steel	GRF14PPD2	4	GRF14PPB2	25	GRF14PPH2	100
	I/M	3/8"	Plug	1/4"	Steel	GRF38PPD	4	GRF38PPB2	25	GRF38PPH	100
	I/M	3/8"	Plug	3/8"	Steel	GRF38PPD2	4	GRF38PPB	25	GRF38PPH2	100
	I/M	1/4"	Coupler	1/4"	Brass	GRF14PCID	4	GRF14PCIB	10	GRF14PCIH	50
PUSH-LOCK COUPLERS 	I/M	1/4"	Coupler	3/8"	Brass	GRF14PCID2	4	GRF14PCIB2	10	GRF14PCIH2	50
	I/M	3/8"	Coupler	1/4"	Brass	GRF38PCID	4	GRF38PCIB	10	GRF38PCIH	50
	I/M	3/8"	Coupler	3/8"	Brass	GRF38PCID2	4	GRF38PCIB2	10	GRF38PCIH2	50
	U	1/4"	Coupler	1/4"	Brass	GRF14PCUD	4	GRF14PCUB	10	GRF14PCUH	50
	U	1/4"	Coupler	3/8"	Brass	GRF14PCUD2	4	GRF14PCUB2	10	GRF14PCUH2	50
PUSH-LOCK COUPLERS 	U	3/8"	Coupler	1/4"	Brass	GRF38PCUD	4	GRF38PCUB	10	GRF38PCUH	50
	U	3/8"	Coupler	3/8"	Brass	GRF38PCUD2	4	GRF38PCUB2	10	GRF38PCUH2	50
	U	1/4"	Splicer	1/4"	Brass	GRF14PSPLD	4	GRF14PSPLB	25	GRF14PSPLH	100
	U	3/8"	Splicer	3/8"	Brass	GRF38PSPLD	4	GRF38PSPLB	25	GRF38PSPLH	100


	SPECIFICATIONS		HOSE SIZE	NPT THREAD	MATERIAL	CARDED	PACK COUNT	BULK	PACK COUNT	HIGH QUANTITY BULK	PACK COUNT
	BODY SIZE	STYLE									
PUSH-LOCK HOSE ENDS (2 count) 	1/4"	Hose End	1/4"	Male	Brass	GRF14PLTD	4	GRF14PLTB	25	GRF14PLTH	50
	1/4"	Hose End	3/8"	Male	Brass	GRF14PLTD2	4	GRF14PLTB2	25	GRF14PLTH2	50
	3/8"	Hose End	1/4"	Male	Brass	GRF38PLTD	4	GRF38PLTB	25	GRF38PLTH	50
	3/8"	Hose End	3/8"	Male	Brass	GRF38PLTD2	4	GRF38PLTB2	25	GRF38PLTH2	50


	SPECIFICATIONS			HOSE SIZE	MATERIAL	CARDED	PACK COUNT
	SERIES	BODY SIZE	STYLE				
<div>PUSH-LOCK PLUG & COUPLER KITS</div> <div></div>							
	I/M	1/4"	2-piece kit	1/4"	Coupler: Brass Plug: Steel	GRFKIT14PL	4
	I/M	3/8"	2-piece kit	3/8"	Coupler: Brass Plug: Steel	GRFKIT38PL	4


	SPECIFICATIONS			NPT THREAD	MATERIAL	CARDED	PACK COUNT	BULK	PACK COUNT
	SERIES	BODY SIZE	STYLE						
DRAIN COCKS 	I/M	1/4"	Wing Nut	Male	Brass	GRF14TDCW	4	GRF14TDCW	50


I/M=Industrial Milton; AUTO=Automotive; U=Universal; NPT=National Pipe Thread Tapered Thread


Other Accessories

	SPECIFICATIONS		DESCRIPTION	CARDED	PACK COUNT
	SERIES	BODY SIZE			
BLOW GUNS & ACCESSORY KITS 					
	I/M	1/4"	Standard Blow Gun	GRFBG	4
	I/M	1/4"	In-line blow gun assembly w/ couplers	GRF14BGA	4
	AUTO	1/4"	In-line blow gun assembly w/ couplers	GRF14BGAA	4
	I/M	1/4"	7-Piece Accessory Kit w/ Blow Gun	GRFKIT7	4
	I/M	1/4"	25-Piece Accessory Kit w/ Blow Gun	GRFKIT25	4

	NPT SIZE	DESCRIPTION	MATERIAL	CARDED	PACK COUNT
AIR CHUCKS & GAUGES 					
	1/4"	Ball Foot Air Chuck - 1/4" Female NPT	Brass	GRF14CHUCK	4
	1/4"	2" Gauge Bottom Mount	Chrome	GR160B14C	8
	1/4"	2" Gauge Back Mount	Chrome	GR160A14C	2
	—	Tire Gauge	Chrome	GRFTGAUGE	4

	BODY SIZE	MATERIAL	CARDED	PACK COUNT
RECOIL HOSES 				
	1/4"	25 ft. Recoil Hose - Nylon	GRCH1425CY	4
	1/4"	50 ft. Recoil Hose - Nylon	GRCH1450CY	4

	DESCRIPTION	CARDED	PACK COUNT
AUTOMOTIVE TRIPOD SPLITTER 	3-Way Round Manifold w/ Automotive Style Couplers/plug	GR14SPLBA	4

	DESCRIPTION	CARDED	PACK COUNT
AIR COMPRESSOR REGULATOR 	1/4" Air Compressor Regulator w/ Gauge	GRF14REG	4

I/M=Industrial Milton; AUTO=Automotive; U=Universal; NPT=National Pipe Thread Tapered Thread

ALL SEASON TOOL & COMPRESSOR OIL



The tools and compressors used on job sites can be a significant investment. Grip-Rite® lubricants help to keep these tools operating at their peak efficiency by minimizing wear on internal components, supporting a longer operating life.

Grip-Rite® lubricants are designed for use with Grip-Rite® tools and compressors, along with most other brands. Grip-Rite® offers a wide range of sizes from a convenient 4 oz. bottle that fits easily into a pouch, to a large 32 oz. bottle of compressor oil.

FEATURES

- Designed for use with Grip-Rite pneumatic tools and compressors, along with most other brands
- High quality non-detergent lubricants
- Foil induction sealed bottles prevent leaks
- See-through bottles makes checking oil levels easy
- Prevents rust
- Increases life of rubber parts
- For use in all seasons

SKU	DESCRIPTION	BOTTLE SIZE	BOTTLES/CARTONS
GRT04AS	All Season Air Tool Oil	4 oz.	12
GRT08AS	All Season Air Tool Oil	8 oz.	12
GRT016AS	All Season Air Tool Oil	16 oz.	12
GRT0GALAS	All Season Air Tool Oil	1 gal	6
GRCO16AS	All Season Compressor Oil	16 oz.	12
GRCO32AS	All Season Compressor Oil	32 oz.	12
GRCOGALAS	All Season Compressor Oil	1 gal	6


Temperature Range
Tool Oil:
 -40°F to 435°F
Compressor Oil:
 -40°F to 510°F



800-676-7777
www.grip-rite.com

SERVICE & REPAIR KITS

Grip-Rite® offers service kits for all of its pneumatic tools. All our kits come with genuine Grip-Rite® parts, detailed instructions, and the necessary lubricant. Use our “GRRBK” rebuild kits to replace all your soft parts and our “GRDAK” rebuild kits to replace all your soft parts and driver blade. Shown here are the kit part numbers for the corresponding tool model.



TOOL MODEL #	REBUILD KIT	DRIVER/REBUILD KIT
GRTFR83	GRRBK2300	GRDAK2300
GRTFC83	GRRBK2800	GRDAK2800
GRTN45	GRRBK3000	GRDAK3000
GRTCS250	GRRBK1600	GRDAK1600
GRTFN250	GRRBK200	GRDAK200
GRTBN200N	GRRBK100	GRDAK100
GRTSM2016C	GRRBK3100	GRDAK3100
GRTSN150	GRRBK1200	GRDAK1200
GRTMP16	GRRBK1500	GRDAK1500
GRTCS250Z	GRRBK2700	GRDAK2700
GRTC90	GRRBK2200	GRDAK2200
GRSB150	GRRBK1800	GRDAK1800
GRSB250	GRRBK1900	GRDAK1900
GR150	GRRBK700	GRDAK700
GRC58A	GRRBK1300	GRDAK1300

Contact your nearest dealer or
visit www.grip-rite.com



SAFETY

RISK OF PERSONAL INJURY

Failure to follow all safety and operating instructions, or misuse of the tool, can result in serious injury to tool operator and bystanders.

WARRANTY

Pneumatic Tool 90 Day Satisfaction Guarantee

If you are the original purchaser and not 100% satisfied with the performance of your **GRIP-RITE®** pneumatic tool you have the option to return the product to the original place of purchase, with a dated sales receipt, within 90 days from the date of purchase for a full refund. Certain exclusions apply. **See below for details.*

Compressor 30 Day Satisfaction Guarantee

If you are the original purchaser and not 100% satisfied with the performance of your **GRIP-RITE®** compressor, you have the option to return the product to the original place of purchase, with a dated sales receipt, within 30 days from the date of purchase for a full refund. Certain exclusions apply. **See below for details.*



PNEUMATIC TOOLS AND COMPRESSORS LIMITED WARRANTY

GRIP-RITE® brand pneumatic tools bearing Serial Numbers 19070001 and above; or Serial Numbers 19400001 and above, are warranted to be free from defects in workmanship and materials for seven years from the date of purchase.

Rubber o-rings, bumpers, seals, driver blades, dipsticks, and air filters are excluded from this warranty. Pneumatic tools bearing Serial Numbers not reference above, including all legacy branded tools or "silver body" tools, are covered by a three-year warranty.

All compressors, regardless of body color, are warranted to be free from defects in materials and workmanship for one year from the date of original purchase.

If your compressor or **GRIP-RITE®** pneumatic tool demonstrates a defect in workmanship or materials during the warranty period, it may be returned to **PRIMESOURCE®** for repair, and if it is not repairable, **PRIMESOURCE®** will replace it.

These warranties and Satisfaction Guarantee will not apply if:

- The original receipt (or copy), showing the original purchase date, is not provided with the tool or compressor sent in for warranty repair or upon return
- The tool or compressor has been misused, abused or improperly maintained
- Alterations have been made to the original tool or compressor
- Repairs have been attempted or made to the original tool or compressor by any entity other than a proprietary **PRIMESOURCE®** service/warranty center or authorized service/warranty center
- Non-**GRIP-RITE TOOLS™/GRIP-RITE COMPRESSORS™** parts have been used
- The tool has suffered any physical damage due to the use of non-**PRIMESOURCE®** approved fasteners. The only approved fasteners include the following brands **TIMCO, GRIP-RITE®**
- Repairs are required due to normal wear and tear on the product. Normal wear and tear are not warrantable conditions
- The tool or compressor has been inadequately packaged leading to damage in transit to the service/warranty center

THESE WARRANTIES ARE IN LIEU OF ALL OTHER WARRANTIES EXPRESS OR IMPLIED. **PRIMESOURCE®** EXPRESSLY DISCLAIMS ALL OTHER WARRANTIES INCLUDING WARRANTIES OF MERCHANTABILITY AND FITNESS FOR A PARTICULAR PURPOSE (EXCEPT AS MAY OTHERWISE BE PROVIDED BY LAW). **PRIMESOURCE®** DISCLAIMS LIABILITY FOR INDIRECT, INCIDENTAL, OR CONSEQUENTIAL DAMAGES RELATED TO THE SALE OR USE OF ITS PRODUCTS BOTH DURING AND AFTER THE WARRANTY TERM.

These warranties give you specific legal rights, and you may also have other rights, which vary, from state to state.

PNEUMATIC TOOL/COMPRESSOR SERVICE INFORMATION

Should any mechanical problems develop during the life of your equipment, the following options are available for service and parts:

- Call (800) 676-7777 to be routed to the nearest **GRIP-RITE™** distribution center and directed to the nearest authorized service/warranty center
- Log on to our website at www.grip-rite.com to find a list of our authorized service centers
- Contact the **PRIMESOURCE® National Service Center** directly at Phone: (800) 207-9259 or Fax: (800) 207-9614

STEPS TO TAKE WHEN SHIPPING TOOLS

- Adequately package the product to avoid damage in transit (in the case of pneumatic tools, the original blow mold plastic carrying case is considered adequate packaging)
- Provide the original or copy of the receipt showing the original purchase date
- Insure your shipment with the shipping company. **PRIMESOURCE®** will not be responsible for any tool or compressor that is lost or damaged by the shipper.



800-676-7777
www.grip-rite.com

COMPRESSORS

**GR100****GR152CM****GR2540LR**

HORSEPOWER	1 HP	2 HP	2.5 HP
TANK CAPACITY	1 GAL	2 GAL	4 GAL
LUBRICATION	Oil-free	Oil-free	Oil
DRAW	5 Amps	8 Amps	12 Amps
DECIBELS	69	75	76
PSI ON/OFF	95/125	95/125	110/150
CFM	0.6 at 90 PSI	2.6 at 90 PSI	4.2 at 90 PSI
PUMP-UP	50 seconds	50 seconds	76 seconds
RECOVERY	34 seconds	10 seconds	18 seconds
RPM	3450	3450	1725
HEIGHT	13.4"	14.9"	20.0"
LENGTH	14.6"	18.9"	23.6"
WIDTH	14.2"	14.9"	22.0"
WEIGHT	23 lbs.	37 lbs.	90 lbs.
MOTOR TYPE	Induction	Induction	Induction
LIFE EXPECTANCY	4,000 hrs.	4,000 hrs.	10,000 hrs.

**GR309EDV****GR55G10X****GR90G10X**

HORSEPOWER	1.5 HP	5.5 HP	9 HP
TANK CAPACITY	9 GAL	9 GAL	9 GAL
LUBRICATION	Oil	Oil	Oil
DRAW	115 Volts: 15 Amps 230 Volts: 7.5 Amps	N/A	N/A
DECIBELS	79	95	95
PSI ON/OFF	105/135	105/135	105/135
CFM	7.0 at 90 PSI	12.5 at 100 PSI	18.5 at 100 PSI
PUMP-UP	83 seconds	59 seconds	41 seconds
RECOVERY	19 seconds	15 seconds	10 seconds
RPM	1060	1210	1250
HEIGHT	23.0"	25.0"	28.0"
LENGTH	45.0"	47.0"	49.0"
WIDTH	19.0"	19.0"	19.0"
WEIGHT	162 lbs.	198 lbs.	246 lbs.
MOTOR TYPE	Induction	Honda® gas engine	Honda® gas engine
LIFE EXPECTANCY	10,000 hrs.	10,000 hrs.	10,000 hrs.

PNEUMATIC TOOLS

				
	GRTFR83 Framing	GRTFC83 Framing	GRTCN90 Framing	GR150 Framing/Specialty
FIRING MODE	Selectable Trigger, Bump or Sequential	Selectable Trigger, Bump or Sequential	Selectable Trigger, Bump or Sequential	Push
MAGAZINE CAPACITY	75 Nails	80 Nails	200-300 Nails	30 Nails
OPERATING PRESSURE	70-120 PSI	70-120 PSI	80-120 PSI	100-120 PSI
FASTENER TYPE	21° Plastic Strip Round Head Framing Nails 	30°-34° Offset Round & Clipped Head Paper Tape Framing Nails 	15° Wire & Plastic Sheet Coil Nails 	30°-34° Paper Tape & Plastic Strip Metal Connector Nails  
FASTENER RANGE	Length: 2" to 3-1/4" Diameter: .113" to .148"	Length: 2" to 3-1/4" Diameter: .113" to .131"	Length: 1-3/4" to 3-1/2" (Wire) 1-3/4" to 3" (Plastic) Diameter: .099" to .148"	Length: 1-1/2" Diameter: .131" to .148"
WEIGHT	6.9 lb.	7.3 lb.	6.6 lb.	4.4 lb.

				
	GRSB250 Framing/Specialty	GRSB150 Framing/Specialty	GRTMP16 Framing/Specialty	GRTRN45 Roofing
FIRING MODE	Sequential	Sequential	Push (multi-blow)	Bump Fire
MAGAZINE CAPACITY	33 Nails	33 Nails	N/A	120 Nails
OPERATING PRESSURE	80-120 PSI	80-120 PSI	80-110 PSI	70-120 PSI
FASTENER TYPE	30°-34° Paper Tape Metal Connector Nails 	30°-34° Paper Tape Metal Connector Nails 	Hand Driven Nails 	15° Coil Roofing Nails 
FASTENER RANGE	Length: 1-1/2" to 2-1/2" Diameter: .131" to .162"	Length: 1-1/2" Diameter: .131" to .148"	Most nails up to 16d (3-1/2")	Length: 7/8" to 1-3/4"
WEIGHT	5.7 lb.	4.4 lb.	1.1 lb.	5.04 lb.