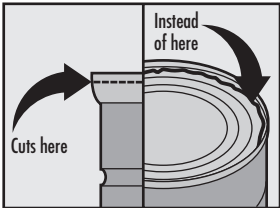




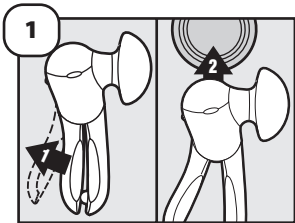
**GOOD
GRIPS[®]**

USE & CARE

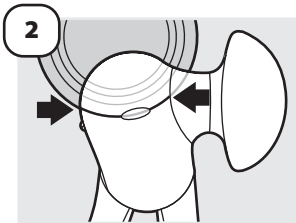
OXO's side-cutting Can Opener cuts below the can edge, leaving no sharp edges on the can or lid. Our easy-to-turn, side-wind knob requires less force and features OXO's non-slip, comfortable grip. The stainless steel cutting wheel penetrates the outside seal of the can, so the lid won't fall into your food. Use the lid pliers for no-touch can lid removal. Enjoy a safe, hygienic and easy way to open small and large cans.



Unlike traditional can openers, a smooth cut is made on side of lid.



Open handle. Move opener against can.



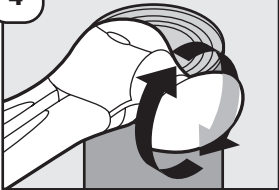
Align top of can with curve on top of opener.

3



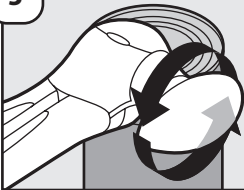
Close handle to begin cut.

4



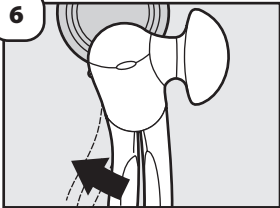
Turn knob clockwise until there is a decrease in resistance.

5



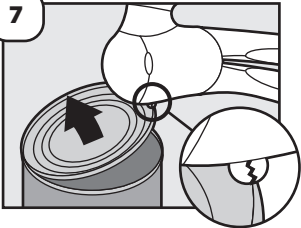
Turn knob counter clockwise one turn
to release lid.

6



Open handle to release can.

7



Use lid pliers to remove lid.