

# FILL-RITE®

The Most Trusted Name in Pumps and Meters

## Product Catalog



 Tuthill

Made in  
  
USA



P (800) 634-2695 • (260) 747-7524

F (800) 866-4861

8825 Aviation Drive  
Fort Wayne, Indiana 46809

Our manufacturing facility is  
ISO 9001:2008 and Atex Certified



## The Tuthill Story

Tuthill Corporation is a diversified global manufacturing company, developing and supplying industrial products for our value-minded customers in over 150 markets.

Our culture is based on the Tuthill Business System (TBS); our version of lean manufacturing. TBS, coupled with the Conscious Company initiatives of personal continuous improvement, through which Tuthill encourages its employees to reach for a higher level of greatness, allows for excellence not only in the products we manufacture but in the people we employ and customers we serve. The end result is a company you can depend on, one that eliminates waste in our processes and provides superior products, quality, and value for our customers.

Tuthill is celebrating 50 years of manufacturing a comprehensive product line of chemical and fuel transfer products well suited for any dispensing and metering applications. The Fill-Rite® and Sotera™ brands are recognized internationally as the symbols for the most dependable, durable, and rugged products available.

### TABLE OF CONTENTS

<b>Pump Overview</b>	<b>1</b>
<b>DC Transfer Pumps</b>	<b>2-3</b>
<b>AC Transfer Pumps</b>	<b>4-5</b>
<b>Cabinet Dispenser Family</b>	<b>6-7</b>
<b>Cabinet Pumps and Meters</b>	<b>8</b>
<b>Remote Operated Fueling Systems</b>	<b>9</b>
<b>Hand Pumps</b>	<b>10-11</b>
<b>Arctic Pumps and Accessories</b>	<b>12</b>
<b>Electric Diaphragm Pumps</b>	<b>13</b>
<b>Air Operated Diaphragm Pumps and Accessories</b>	<b>14-15</b>
<b>DEF Products</b>	<b>16</b>
<b>Meter Overview</b>	<b>17</b>
<b>High Flow/High Pressure Rugged Application Meters</b>	<b>18</b>
<b>Mechanical Flow Meters</b>	<b>19</b>
<b>Digital Flow Meters</b>	<b>20</b>
<b>Specialty Dispenser Meters</b>	<b>21</b>
<b>Bulk Loading and Unloading Meters</b>	<b>22</b>
<b>Positive Displacement Oval Gear Meters for Fuels</b>	<b>23</b>
<b>Accessories</b>	<b>24-25</b>

# Pump Overview

## Tuthill Rotary Vane “Point of Use” Transfer Pumps

The transfer of fuels is one of the foundational components keeping industry moving, growing, and creating jobs. Tuthill is proud to meet the fuel transfer needs of the agricultural, construction, and transportation industries with our 100 percent Made in the USA Fill-Rite rotary vane pumps. The cast iron construction of a Fill-Rite fuel transfer pump is unparalleled in durability and is the quality standard in these industries. If your business revolves around work on a farm, construction site or in fleet service, odds are quite good that you rely every day on Fill-Rite pumps and meters to keep you moving.

Recent changes in EPA emission requirements for both on and off road diesel powered equipment have increased demand for Diesel Exhaust Fluid, or DEF. To meet the needs of this rapidly expanding market, Tuthill has developed a line stainless steel rotary vane pumps under the Sotera brand. Sotera pumps, meters, and systems meet the stringent compatibility and high flow requirements for dispensing DEF. Manufactured in the same Fort Wayne, Indiana facility as the Fill-Rite line, every Sotera product is engineered and built to the exacting standards that make Fill-Rite famous for quality and durability.

We take the transfer of fuels and chemicals very seriously. Excellence in design and manufacturing to extreme tolerances means you can depend on Tuthill’s Fill-Rite and Sotera branded products for outstanding performance in the most demanding environments.



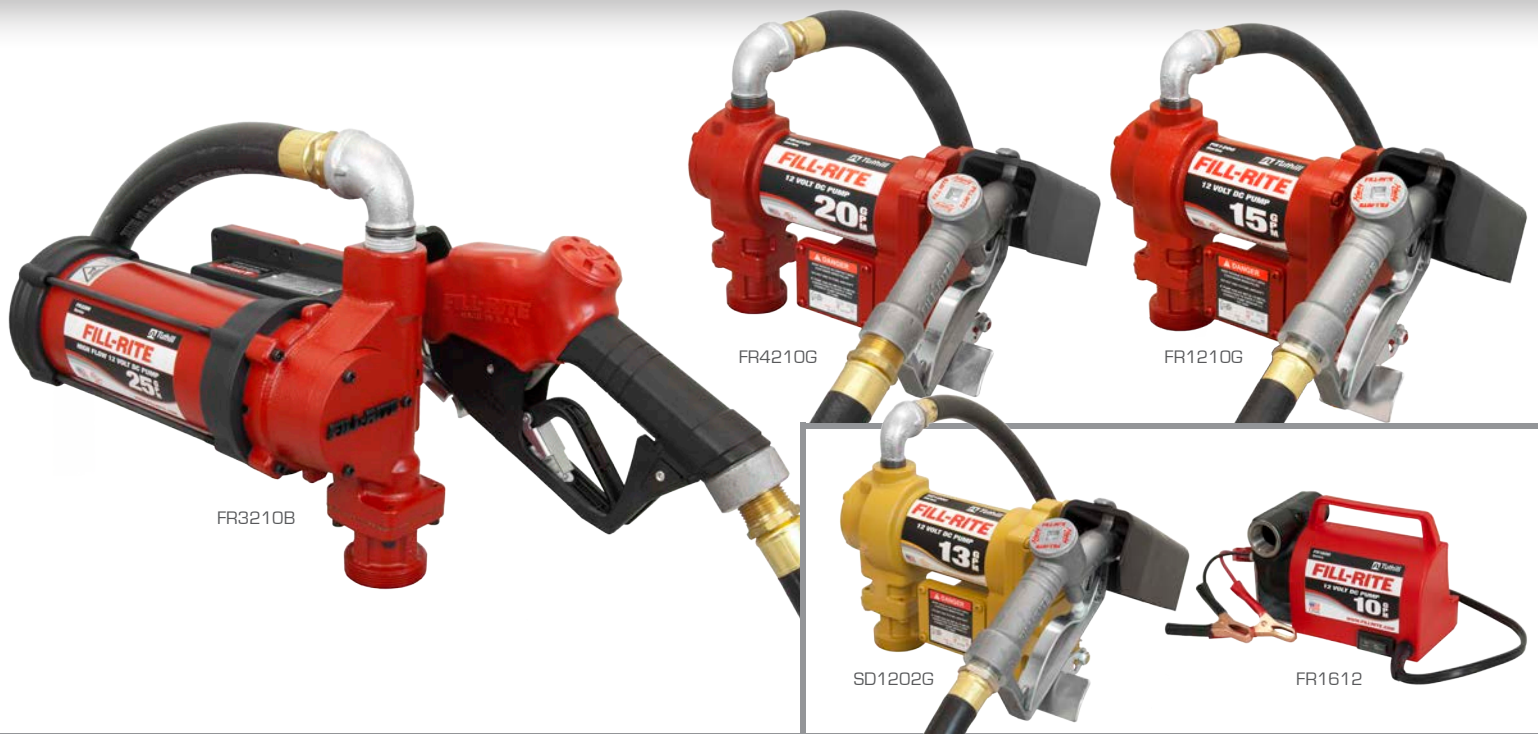
## Tuthill Diaphragm Pumps

With a primary focus on transfer and point-of-use dispensing of agricultural chemicals and basic transfer of fuels, Tuthill has been producing electrically powered diaphragm pumps for 20 years. These stalwarts of the agricultural industry are available in both AC and DC powered models, making them ideal for both stationary and mobile applications.

Building on a heritage of innovation and quality, Tuthill has recently launched a new line of Sotera Air Operated Diaphragm Pumps. With initial offerings of the most popular ½” and 1” sizes [2” and 3” models to follow], these pumps provide dependable and efficient transfer of engine oils and other service chemicals. Boasting the highest flow rates available in the category and a wide range of materials of construction, Sotera is the right solution for your chemical transfer needs.







## Fill-Rite's Complete Range of Mobile DC Fuel Transfer Pumps for Gasoline/Diesel/B20/E-15/Kerosene

### FR1200 Series · Heavy Duty

**15 GPM**  
**12 Volt**

- 8' Lift
- For In-Bed Truck Tanks

- For Mobile Tanks used in Farming and Construction
- Great Emergency Response Pump

		Top Selling Model		Top Selling Model	
	FR1204	FR1210G	FR1210GA	FR1211G	FR1211GL
Flow Rate (GPM/LPM)	Up to 15/57	Up to 15/57	Up to 15/57	Up to 15/57	Up to 15/57
Voltage	12 Volt	12 Volt	12 Volt	12 Volt	12 Volt
Inlet/Outlet	1"/3/4"	1"/3/4"	1"/3/4"	1"/3/4"	1"/3/4"
Mount	2" NPT	2" NPT	2" NPT	2" NPT	2" NPT
Mats of Const - Housing	Cast Iron	Cast Iron	Cast Iron	Cast Iron	Cast Iron
Horse Power	1/4	1/4	1/4	1/4	1/4
Power Cord Length	-	18'	18'	18'	18'
Amps	20	20	20	20	20
Duty Cycle	30 min	30 min	30 min	30 min	30 min
Certifications	UL/cUL Motor	UL/cUL Motor	UL/cUL Motor	UL/cUL Motor	UL/cUL Motor
Included Accessories	Pump Only	20 - 34 3/4" Steel Telescoping Suction Pipe, 3/4" x 12' Hose, 3/4" Manual Nozzle	20 - 34 3/4" Steel Telescoping Suction Pipe, 3/4" x 12' Hose, 3/4" Auto Nozzle	20 - 34 3/4" Steel Telescoping Suction Pipe, 3/4" x 12' Hose, 3/4" Manual Nozzle, Mechanical Meter (Gal)	20 - 34 3/4" Steel Telescoping Suction Pipe, 3/4" x 12' Hose, 3/4" Manual Nozzle, Mechanical Meter (Liter)

# DC Transfer Pumps

## FR4200 Series · Heavy Duty

- 20 GPM** • 25% Higher Flow • 8' Lift  
**12 Volt** • For In-Bed Truck Tanks and Mobile Tanks  
 • Great Emergency Response Pump

### Top Selling Model

## FR3200 Series · Heavy Duty

- 25 GPM** • Highest Flow DC Pump in the Industry  
**12 Volt** • For Remote Fueling of Large Ag and Construction Equipment

	FR4204G	FR4210G	FR4211G	FR3204	FR3210B
Flow Rate (GPM/LPM)	Up to 20/75	Up to 20/75	Up to 20/75	Up to 25/95	Up to 25/95
Voltage	12 Volt	12 Volt	12 Volt	12 Volt	12 Volt
Inlet/Outlet	1"/1"	1"/1"	1"/1"	1"/1¼"	1"/1¼"
Mount	2" NPT	2" NPT	2" NPT	2" NPT	2" NPT
Matls of Const - Housing	Cast Iron	Cast Iron	Cast Iron	Cast Iron	Cast Iron
Horse Power	1/4	1/4	1/4	1/2	1/2
Power Cord Length	-	18'	18'	20'	20'
Amps	19	19	19	50	50
Duty Cycle	30 min	30 min	30 min	30 min	30 min
Certifications	UL/cUL Motor	UL/cUL Motor	UL/cUL Motor	UL/cUL Motor	UL/cUL Motor
Included Accessories	Pump Only	20 - 34 ¾" Steel Telescoping Suction Pipe, 1" x 12' Hose, 1" Manual Nozzle (For 1" Automatic Nozzle order FR4210GB)	20 - 34 ¾" Steel Telescoping Suction Pipe, 1" x 12' Hose, 1" Manual Nozzle, Mechanical Meter (Gal)	Pump Only	20 - 34 ¾" Steel Telescoping Suction Pipe, 1" x 18' Hose, 1" Ultra High Flow Automatic Nozzle

## Standard Duty - 12 Volt

### SD1200 Series

- Weekend Warrior
- For In-Bed Truck and Small Mobile Tanks
- Great Emergency Pump

### FR1600 Series

- Extremely Portable
- Diesel Only
- For Drums and Totes

### FR2400 Series · Heavy Duty

- 15 GPM** • For 24 Volt Battery Applications  
**24 Volt** • For Mobile Tanks used in Farming and Construction

	SD1202G	FR1614	FR2410G	FR2411GL
Flow Rate (GPM/LPM)	Up to 13/49	Up to 10/38	Up to 15/57	Up to 15/57
Voltage	12 Volt	12 Volt	24 Volt	24 Volt
Inlet/Outlet	1"/¾"	¾" / ¾"	1"/¾"	1"/¾"
Mount	2" NPT	-	2" NPT	2" NPT
Matls of Const - Housing	Cast Iron	Cast Iron	Cast Iron	Cast Iron
Horse Power	1/4	1/4	1/4	1/4
Power Cord Length	15'	6½'	18'	18'
Amps	20	20	10	10
Duty Cycle	30 min	30 min	30 min	30 min
Certifications	UL/cUL Motor	-	UL/cUL Motor	UL/cUL Motor
Included Accessories	15¼" - 43¼" PVC Two - Piece Suction Pipe, ¾" x 10' Hose, ¾" Manual Nozzle (For ¾" Automatic Nozzle order SD1202GA)	8' PVC Suction Hose, ¾" x 8' Hose, ¾" Manual Poly Nozzle (For Pump Only order FR1612)	20 - 34 ¾" Steel Telescoping Suction Pipe, ¾" x 12' Hose, ¾" Manual Nozzle	20 - 34 ¾" Steel Telescoping Suction Pipe, ¾" x 12' Hose, ¾" Manual Nozzle, Mechanical Meter (Liter)

Have a cold weather application? Arctic Pump Kits available on page 12



## Fill-Rite's Complete Range of AC Fuel Transfer Pumps

for Gasoline/Diesel/B20/E-15/Kerosene

### SD600 Series · Standard Duty

- 13 GPM**
- 115 Volt**
- 8' Lift
- For use with Skid Tanks
- Perfect for the Weekend Warrior

### FR600 Series · Heavy Duty

- 15 GPM**
- 115 Volt**
- 8' Lift
- For use with Skid Tanks
- For Very Small Fleets

	SD602G	FR610G
Flow Rate (GPM/LPM)	Up to 13/49	Up to 15/57
Voltage	115 Volt	115 Volt
Inlet/Outlet	1"/3/4"	1"/3/4"
Bung Mount	2" NPT	2" NPT
Mats of Const - Housing	Cast Iron	Cast Iron
Horse Power	1/4	1/4
Hz	60	60
Amps	1.5	1.5
Duty Cycle	30 Min	30 Min
Certification	UL/cUL	UL/cUL
Included Accessories	Three Piece PVC Suction Pipe, 3/4" x 12' Hose, 3/4" Manual Nozzle	20 - 34 3/4" Steel Telescoping Suction Pipe, 3/4" x 12' Hose, 3/4" Manual Nozzle (For Pump Only order FR604) (For 3/4" Automatic Nozzle order FR610CA)

# AC Transfer Pumps

## FR700 Series · Heavy Duty

- 15-20 GPM**
- 10' Lift (Gasoline) 12' Lift (Diesel)
  - For use with Above Ground and Underground Tanks
- 115 Volt**
- For Small Fleets

	Top Selling Model	Top Selling Model			
	FR700V	FR701V	FR701VL	FR710VN	FR711VA
Flow Rate (GPM/LPM)	Up to 18/68	Up to 15/57	Up to 15/57	Up to 20/76	Up to 18/68
Voltage	115 Volt	115 Volt	115 Volt	115 Volt	115 Volt
Inlet/Outlet	1 1/4" / 3/4"	1 1/4" / 3/4"	1 1/4" / 3/4"	1 1/4" / 1"	1 1/4" / 1"
Bung Mount	2" NPT	2" NPT	2" NPT	2" NPT	2" NPT
Mats of Const - Housing	Cast Iron	Cast Iron	Cast Iron	Cast Iron	Cast Iron
Horse Power	1/3	1/3	1/3	1/3	1/3
Hz	60	60	60	60	60
Amps	5.5	5.5	5.5	5.5	5.5
Duty Cycle	30 Min	30 Min	30 Min	30 Min	30 Min
Certification	UL/cUL	UL/cUL	UL/cUL	UL/cUL	UL/cUL
Included Accessories	3/4" x 12' Hose, 3/4" Manual Nozzle (For Pump Only order FR700VN)	3/4" x 12' Hose, 3/4" Manual Nozzle, Mechanical Meter (Gal)	3/4" x 12' Hose, 3/4" Manual Nozzle, Mechanical Meter (Liter)	Pump Only	1" x 18' Hose, 1" Ultra Hi Flow Auto Nozzle, Mechanical Meter (Gal)

## FR300 Series · Heavy Duty

- 35 GPM**
- Diesel Only
  - 18' Lift
  - For use with Above Ground and Underground Tanks
  - 35% Faster Flow
- 115/230 Volt**
- For Large Fleets

					New Model
	FR310VN	FR311VN	FR311VB	FR311VLN	FR319VB
Flow Rate (GPM/LPM)	Up to 35/132	Up to 35/132	Up to 35/132	Up to 35/132	Up to 35/132
Voltage	115/230 Volt	115/230 Volt	115/230 Volt	115/230 Volt	115/230 Volt
Inlet/Outlet	1 1/4" / 1"	1 1/4" / 1"	1 1/4" / 1"	1 1/4" / 1"	1 1/4" / 1"
Bung Mount	2" NPT	2" NPT	2" NPT	2" NPT	2" NPT
Mats of Const - Housing	Cast Iron	Cast Iron	Cast Iron	Cast Iron	Cast Iron
Horse Power	3/4	3/4	3/4	3/4	3/4
Hz	50/60	50/60	50/60	50/60	50/60
Amps	9.8/4.9/11.4/5.7	9.8/4.9/11.4/5.7	9.8/4.9/11.4/5.7	9.8/4.9/11.4/5.7	9.8/4.9/11.4/5.7
Duty Cycle	30 Min	30 Min	30 Min	30 Min	30 Min
Certification	UL/cUL	UL/cUL	UL/cUL	UL/cUL	UL/cUL Motor
Included Accessories		Mechanical Meter (Gal)	1" x 18' Hose, 1" Ultra Hi-Flow Auto Nozzle, Mechanical Meter (Gal)	Mechanical Meter (Liter)	1" x 18' Hose, 1" Ultra High Flow Automatic Nozzle, Digital Meter

Have a cold weather application? Arctic Pump Kits available on page 12



**DIESEL  
FUEL ONLY**

UL Approval Pending



FR902DP / FR902DPU\*\*  
FR302DP / FR302DPU\*\*

\*\*Shown with optional pedestal kit KITPD and optional Ultra High Flow Nozzle.



FR102PH



FR910PM\*\*

## Cabinet Dispenser Features

- Modular design for installation flexibility
- Easy upgrades from pedestal only to wall or tank mount
- Weights and measures accuracy models available
- Large selection of accessories to compliment cabinet
- Durable powder coated finish provides added protection from the elements for your pump and meter
- Remote metering
- Sleek retro appearance
- Integrated hammer arrestor
- Plug and play electronics
- Easy connection to FMS
- Meter models include intrinsic safety barrier



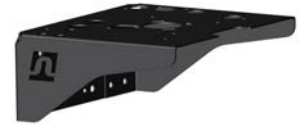
# New Cabinet Dispensing Family



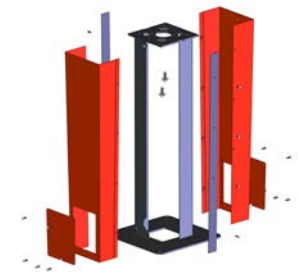
Fill-Rite's all new line of cabinet dispensers and meters provide a fuel dispensing solution for virtually every application. The Fill-Rite® legacy of rugged durability and pride in workmanship are clearly evident in this new line.

The FR102PH provides clean, simple remote switching for a pump, convenient hose storage, and a heavy duty nozzle boot.

## Optional Accessories:



Wall Mounting Bracket (KITMB)



Pedestal Mounting Kit (KITPD)  
(Included with FR102PH)

The FR302 and FR902 Series integrate the 900DP digital meter for applications needing electronic pulse capability. Available with either an internal FR310 high flow pump or no integral pump, the models are an excellent choice for fuel management applications.

The FR910PM incorporates a TS10A Precision Meter mated to Mid:Com electronics for weights and measures accuracy.

	FR102PH	FR902DP/FR902DPU*	FR302DP / FR302DPU*	FR910PM*
Description	Remote pedestal Nozzle Hook	900DP Cabinet	900DP + 300 Series Cabinet	Precision Meter Cabinet
Flow Rate (GPM/LPM)	Depends on pump and nozzle	Up to 40 GPM / 151 LPM	Up to 26 GPM / 98 LPM	4 - 40 GPM / 15.1-151 LPM
Pressure	50psi / 3.4 bar	50psi / 3.4 bar	50psi / 3.4 bar	50psi / 3.4 bar
Power	115/230V Input	115/230V Input	115/230V Input	115/230V Input
Pump	No	No	FR310	No
Meter	No	900DP nutating disk	900DP nutating disk	TS10A oval gear
Inlet	1" NPT	2" NPT	2" NPT (1 1/4" w/ adapter)	2" NPT
Outlet	1" NPT	1" NPT	1" NPT	1" NPT
Hammer Arrestor	No	Included	Included	Included
Electronics	No	4 digit 900DP meter	4 digit 900DP meter	Mid:com
Security Solenoid	Included	Included	None	Included
Repeatability	NA	+/- 0.25%	+/- 0.25%	+/- 0.15%
Linearity/Accuracy	NA	+/- 1.25%	+/- 1.25%	+/- 0.3%
Field Calibration	NA	Yes	Yes	Yes
Nozzle Boot	Standard	Standard/Universal on UL version	Standard/Universal on UL version	Standard
UL/cUL	Coming Soon	Coming Soon	Coming Soon	No

\* Optional wall mounting bracket or pedestal kit sold separately



FR702VR



FR713V



FR902R

## Fill-Rite's Complete Range of Cabinet Pumps, Meters and Remote Fueling Systems

for Gasoline/Diesel/B20/E-15/Kerosene

### FR702 Cabinet Pumps and Meters · Heavy Duty

20 GPM

• For Pedestal Mounting or Direct Tank Top Mounting

115/230 Volt

	FR702VR	FR702VLRU	FR702VRU	FR702VRGU
				<b>New Model</b>
Flow Rate (GPM/LPM)	Up to 15/57	Up to 18/68	Up to 18/68	Up to 18/68
Voltage	115 Volt	115 Volt	115 Volt	230 Volt
Inlet/Outlet	1 1/4" / 3/4"	1 1/4" / 3/4"	1 1/4" / 3/4"	1 1/4" / 3/4"
Bung Mount	2" NPT	2" NPT	2" NPT	2" NPT
Mats of Const - Housing	Cast Iron	Cast Iron	Cast Iron	Cast Iron
Horse Power	1/3	1/3	1/3	1/3
HZ	60	60	60	50
Amps	5.5	5.5	5.5	5.5
Duty Cycle	30 Min	30 Min	30 Min	30 Min
Certification	UL/cUL	UL/cUL	UL/cUL	UL/cUL
Included Accessories	3/4" x 12' Hose, 3/4" Manual Nozzle	Liter Register	Gallon Register	Gallon Register

# Remote Operated Fueling Systems

Fill-Rite's remote operated fueling systems have been specifically designed for taller tanks and remote dispense point applications, such as when the tank is behind a secondary containment wall, or any application that requires the pump to be separated from the system due to accessibility.

Remote applications require both a Fill-Rite remote pump and cabinet meter (see below).  
 (Refer to the Installation Diagram on page 24)

**Fill-Rite's remote pumps** are designed for dependable performance under the most demanding conditions. Self-priming and ready to mount to the top of the fuel tank (recommended location), a Fill-Rite pump will deliver years of service. The on/off power required to operate the pump is supplied directly from the meter cabinet. An anti-siphon kit is included with every model and is easily installed on-site by the customer.

## Remote Pumps - Heavy Duty

**115/230 Volt** • For use with FR902 Cabinet Meters

	FR303V	FR313V	FR713V
Flow Rate (GPM/LPM)	Up to 20/75	Up to 35/132	Up to 20/75
Voltage	115/230 Volt	115/230 Volt	115 Volt
Inlet/Outlet	1 1/4" / 1"	1 1/4"/1"	1 1/4"/ 3/4"
Bung Mount	2" NPT	2" NPT	2" NPT
Mats of Const - Housing	Cast Iron	Cast Iron	Cast Iron
Horse Power	1/2	3/4	1/3
HZ	50/60	50/60	60
Amps	8.2/4.1/9.2/4.6	9.8/4.9/11.4/5.7	5.5
Duty Cycle	30 Min	30 Min	30 Min
Certification	UL/cUL	UL/cUL	UL/cUL

**Fill-Rite's FR902 model meter cabinets** are constructed from heavy duty 16-gauge steel and are powder coated to stand up to the harshest environments. Hood removal is quick and simple; remove three screws and the reset knob and you have access. The cabinet is pulser-ready and all external wiring connections are placed in easy access locations.

## FR902 Cabinet Meters - Heavy Duty

**6-40 GPM** • For use with Remote Pump  
 • Can be used with submersible pumps

	FR902R	FR902LR	FR902RU	FR902LRU
Flow Rate (GPM/LPM)	6 - 40 / 23-151	6 - 40 / 23-151	6 - 40 / 23-151	6 - 40 / 23-151
Inlet/Outlet	1"/1"	1"/1"	1"/1"	1"/1"
Meter	4 Digit Mechanical (Gal)	4 Digit Mechanical (Liter)	4 Digit Mechanical (Gal)	4 Digit Mechanical (Liter)
Certification	-	-	UL/cUL	UL/cUL



Tough. Reliable. Long-lasting. Fill-Rite hand pumps deliver fluids quickly and easily. Whether your transferring gasoline, oil or diesel, select from a variety of Fill-Rite hand pumps. You'll appreciate the trouble free performance of these rugged hand pumps.

### FR150 Piston Series · Heavy Duty

- 3' Lift
- For Drums, Totes, and Barrels
- Vacuum Breaker Included

	Top Selling Model		
	FR152	FR151	FR150
Flow Rate	20 Gal/100 strokes	20 Gal/100 strokes	20 Gallons/100 strokes
Inlet/Outlet	1" / 3/4"	1" / 3/4"	1" / 3/4"
Bung Mount	2" NPT	2" NPT	2" NPT
Mats of Const - Housing	Cast Aluminum	Cast Aluminum	Cast Aluminum
Certification	UL/cUL	UL/cUL	UL/cUL
Compatible Fluids	Gasoline, Diesel Fuel, Light Oil, and Kerosene		
Included Accessoriess	20" - 34 3/4" Steel Telescoping Suction Pipe, 3/4" x 8' Hose, 3/4" Hose-end Spout	20" - 34 3/4" Steel Telescoping Suction Pipe, Pail Spout	Pump Only



# Hand Pumps



## FR112 Rotary Series · Heavy Duty

- 3' Lift
- For Drums, Totes, and Barrels
- Vacuum Breaker Included

### Top Selling Model

	FR112	FR112C	FR113
Flow Rate	10 Gallons per 100 rev.	10 Gallons per 100 rev.	10 Gallons per 100 rev.
Inlet/Outlet	1" / 3/4"	1" / 3/4"	1" / 3/4"
Bung Mount	2" NPT	2" NPT	2" NPT
Matls of Const - Housing	Cast Aluminum	Cast Aluminum	Cast Aluminum
Certification	UL/cUL	UL/cUL	UL/cUL
Compatible Fluids	Gasoline, Diesel Fuel, Light Oil, and Kerosene		
Included Accessoriess	20" - 34 3/4" Steel Telescoping Suction Pipe, 3/4" x 8' Hose, 3/4" Hose-end Spout (For Pump Only order FR110)	20" - 34 3/4" Steel Telescoping Suction Pipe, 3/4" x 8' Hose, 3/4" Hose-end Spout, Gallon Counter	20" - 34 3/4" Steel Telescoping Suction Pipe, Pail Spout

## Special Use Pumps · Standard Duty

- For Drums, Totes, and Barrels
- Will handle a range of automotive fluids [see compatible fluids below]

	FR31	FR20V	SD62	SD11
Description	Quart Stroke Pump	Lever Piston	Rotary Pump	Lever Piston
Flow Rate	1 Quart per Stroke	11 oz. per Stroke	7.5 Gal/100 strokes	11 oz. per Stroke
Inlet/Outlet	1/2" / spout	1" / spout	3/4" / spout	1" / spout
Bung Mount	2" NPT	2" NPT	2" NPT	2" NPT
Matls of Const - Housing	Cast Iron and Steel	Polypropylene	Cast Iron	Steel
Certification	UL/cUL	-	-	-
Compatible Fluids	Gear and lube oil, anti-freeze, petroleum products	Light oils, anti-freeze, coolant, hydraulic oils	Diesel, Kerosene, Machine Oil, Fuel Oil, petroleum products	Light oils, ATF, hydraulic fluid, diesel fuel and kerosene
Included Accessoriess	21" - 36" PVC Telescoping Suction Pipe	PVC Telescoping Suction Pipe	Steel 3 Piece Suction Pipe	Steel Telescoping Suction Pipe



When you need to transfer gasoline, diesel, or kerosene in temperatures as low as -40° F / -40° C, you need a dependable fuel-transfer system that delivers top performance—even in the most adverse weather conditions. Don't take a chance on your fuel transfer system freezing up when temperatures reach extreme lows. Choose Fill-Rite Arctic Duty series pumps and accessories to ensure your vehicles and equipment can get the fuel needed to do the job—regardless of the temperature.

We've taken four of our top-selling pumps and made them arctic ready by packaging them with our line of Arctic Duty nozzles, hoses and swivels and we put them all in one box for your convenience. With the Arctic Duty series, you avoid the hassle of trying to source individual pumps, and accessories that can handle the rigors of extremely cold weather. Save yourself time and hassle and use Arctic Duty products from Fill-Rite.

	FR310VARC	FR700VARC	FR4210GARC	FR1210GARC
Flow Rate (GPM/LPM)	Up to 35/132	Up to 20/75	Up to 20/75	Up to 15/57
Voltage	115/230 Volt	115 Volt	12 Volt	12 Volt
Inlet/Outlet	1 1/4" / 1"	1 1/4" / 3/4"	1"/1"	1"/3/4"
Mount	2" NPT	2" NPT	2" NPT	2" NPT
Matls of Const - Housing	Cast Iron	Cast Iron	Cast Iron	Cast Iron
Horse Power	3/4	1/3	1/4	1/4
Hz	50/60 HZ	60 HZ	-	-
Amps	9.8/4.9/11.4/5.7	5.5	19	20
Duty Cycle	30 Min	30 Min	30 min	30 min
Certifications	UL/cUL	UL/cUL	UL/cUL Motor	UL/cUL Motor
Included Accessories	1" x 20' Arctic Hose, 1" FNPT Arctic Auto Nozzle with Diesel Spout 1" Arctic Multi-Plane Swivel	3/4" x 15' Arctic Hose, 3/4" FNPT Arctic Auto Nozzle with Diesel Spout 3/4" Aluminum Multi-Plane Swivel	20 - 34 3/4" Steel Telescoping Suction Pipe, 1" x 20' Arctic Hose, 1" Arctic Auto Nozzle, 1" Arctic Multi-Plane Swivel	20 - 34 3/4" Steel Telescoping Suction Pipe, 3/4" x 15' Arctic Hose, 3/4" Arctic Auto Nozzle, 3/4" Aluminum Multi-Plane Swivel



S075H1314  
3/4" Arctic Aluminum Multi-Plane Swivel

S100H1315  
1" Arctic Aluminum Multi-Plane Swivel

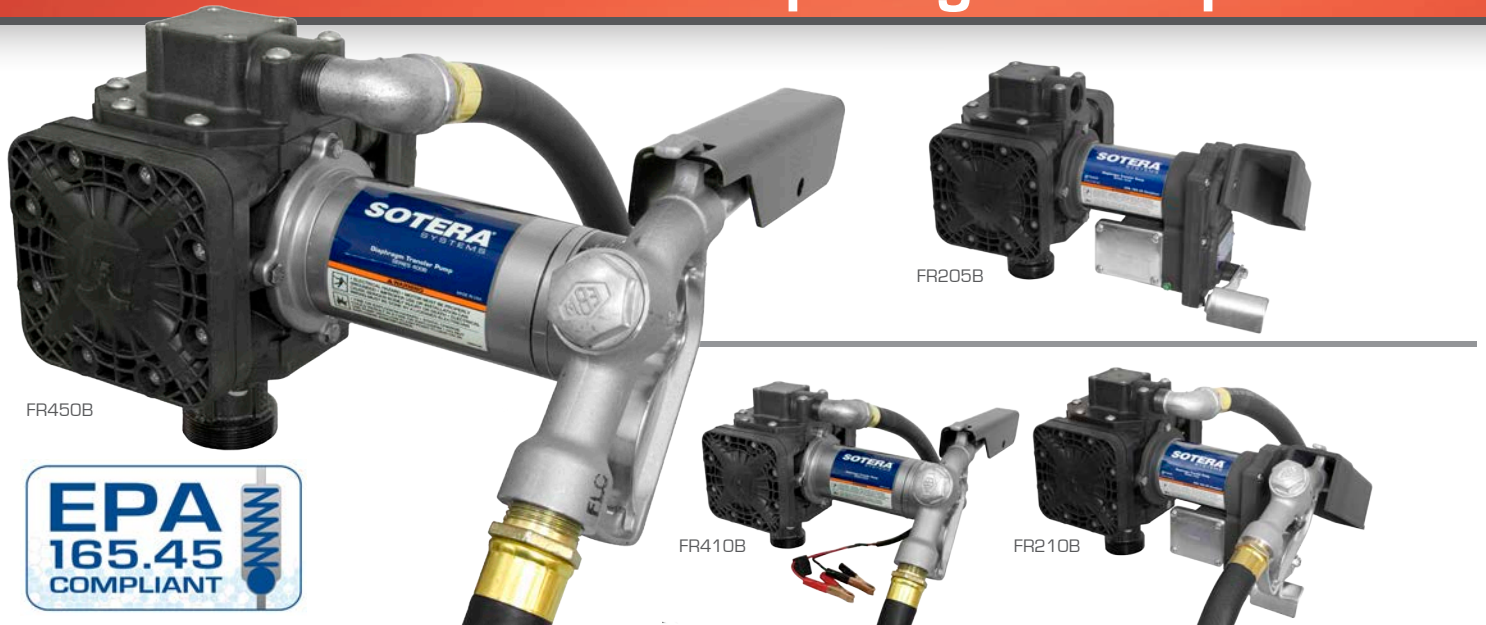
FRNA075DAU10  
3/4" FNPT Arctic Auto Nozzle with Diesel Spout and Hook UL/cUL Diesel, Gasoline, Kerosene

FRNA100DAU00  
1" FNPT Arctic Automatic Nozzle with Diesel Spout and Hook UL/cUL Diesel, Gasoline, Kerosene

FRHA07515  
3/4" x 15' Arctic Hose

FRHA10020  
1" x 20' Arctic Hose

# AC/DC Electric Diaphragm Pumps



FR450B

FR205B

FR410B

FR210B



The electric diaphragm pump line offers proven technology that combines the attributes of an air operated diaphragm pump with the convenience, portability, and efficiency of an electric driven design that uses less power than other conventional chemical pumps for maximum efficiency.

Our unique design improves fluid handling capabilities with low material sheering, solids handling up to 1/10" and dry-run capabilities. These features make this the ideal waste oil, gear oil, lube oil or hydraulic fluid transfer pump.

The power distribution's unique reciprocating, spring driven, double diaphragm configuration retains constant pressure, regardless of the load. No internal bypass required - the pump automatically goes neutral when the end of hose valve is shut off.

	FR205B	FR210B	FR405BEXPX054	FR410B	FR410BEXP	Top Selling Model FR450B*
Flow Rate (GPM/LPM)	Up to 13/49	Up to 13/49	Up to 13/49	Up to 13/49	Up to 13/49	Up to 13/49
Voltage	24 VDC	24 VDC	12 VDC	12 VDC	12 VDC	115 VAC
Inlet/Outlet	1"/1" NPT	1"/1" NPT	1"/1" NPT	1"/1" NPT	1"/1" NPT	1"/1" NPT
Bung Mount	2" NPT	2" NPT	2" NPT	2" NPT	2" NPT	2" NPT
Mats of Const - Housing	Glass filled Poly	Glass filled Poly	Glass filled Poly	Glass filled Poly	Glass filled Poly	Glass filled Poly
Horse Power	1/4	1/4	1/4 Explosion Proof	1/4	1/4 Explosion Proof	1/4
Power Cord Length	15'	15'	15'	15'	15'	6.5'
Amps	10	10	20	20	20	2.5
Duty Cycle	30 min	30 min	30 min	30 min	30 min	30 min
Certification **	UL/cUL Motor	UL/cUL Motor	UL/cUL Motor	-	UL/cUL Motor	-
Included Accessories	Pump Only	20 - 34 3/4" Steel Telescoping Suction Pipe, 1"x12ft Hose, 1" Manual Noz.	Pump Only	20 - 34 3/4" Steel Telescoping Suction Pipe, 1"x12ft Hose, 1" Manual Noz.	20 - 34 3/4" Steel Telescoping Suction Pipe, 1"x12ft Hose, 1" Manual Noz.	20 - 34 3/4" Steel Telescoping Suction Pipe, 1"x12ft Hose, 1" Manual Noz.

\* Visit [www.fillrite.com](http://www.fillrite.com) for more configurations

\*\* UL/cUL Listed, not for gasoline service





SP100-05N-PA-HHH



SP100-05N-CD-HHH

SP100-05N-PP-SSS



SP100-05B-PF-TTP

In grueling industrial environments, Sotera Systems Diaphragm pumps deliver exceptional performance for years of dependable operation. The SP100 Series Air-Operated Double Diaphragm Pump can be configured in materials that are resistant to industrial chemicals and is proven to provide complete compatibility coverage for a wide range of fluids. With its extensive list of features, the SP100 Series outperforms the competition time and time again.

	SP100-05N-XX-XXX-X	SP100-10N-XX-XXX-X
Max Flowrate (flooded suction)	17.5 gpm (79.56 lpm)	56 gpm (212 lpm)
Max Inlet Pressure	100 psi (7bar)	100 psi (7bar)
Max Outlet Pressure	100 psi (7 bar)	100 psi (7 bar)
Air Consumption @ 40psi	0.65 cfm/gal	1.12 cfm/gal
Displacement/Cycle @ 100psi	0.036 gal (0.14L)	0.22 gal (0.14L)
Max Particle Size	3/32" dia (2.4mm)	3/16" dia (4.8mm)
Noise Level @ 70psi	75.0 db(A) at 60 cpm	75.0 db(A) at 60 cpm
Ratio	1:1	1:1
Inlet/Outlet	1/2" / 1/2" NPT	1" / 1" NPT
Air Inlet	1/4" NPT	1/4" NPT
Air Exhaust	1/8" NPT	1/8" NPT
Air Inlet Pressure Range	2-100 psi (0.14-7 bar)	5-100 psi (0.14-7 bar)
Max Material Inlet Pressure	10 psi (0.69 bar)	10 psi (0.69 bar)
Fluid Outlet Pressure Range	2-100 psi (0.14-7 bar)	5-100 psi (0.34-7 bar)
Max Pump Speed	450 cpm	450 cpm
Max Suction Lift (water w/ Hytrel Balls)	14 ft (4.27 m)	14 ft (4.27 m)

## Fluid Compatibility

Transmission fluid . . . . .

Antifreeze . . . . . SP100-05N-CD-HHH and SP100-10N-PA-HHH

Waste Oil . . . . . SP100-05N-CD-HHH

New Oil . . . . . SP100-05N-CD-HHH and SP100-10N-PA-HHH

Diesel Exhaust Fluid . . . . . SP100-05N-CD-HHH and SP100-10N-PA-HHH

Windshield wiper fluid . . . . .

Ag Chemicals . . . . . SP100-05N-PP-SSS

SP100-05N-PP-TTP

SP100-05N-PP-TTP and SP100-05N-PP-SSS



# Air Operated Diaphragm Pump Accessories

## 5-YEAR WARRANTY

Tuthill warrants that the **SP100 Series Air-operated Double Diaphragm Pump** will be free of manufacturers defects and will perform seamlessly under normal operating conditions for a period of five years.



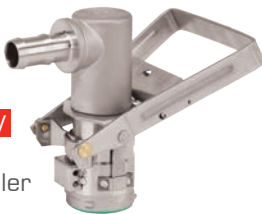
**KITS05WMA - 1/2"**  
**KITS10WMA - 1"**

Wall Mount Assembly Kit for SP100 Air Operated Diaphragm Pump



**KITS05FRH**  
**KITS10FRH**

Filter Regulator Hose  
Air Line Connection Kit for SP100



**MMSS075RSV**

RSV Four Pin  
Dispense Coupler



**KIT180MPPS**

Stainless Mounting Plate  
For all Rotary Vane SV and FR DEF Series Pumps and SP100 Air Operated Diaphragm Pump secures to the top of a 275 or 330 gallon tote.

- Mounting hardware included.
- Fits all SP100-05 models.



**KIT180MPPS**

Hose and Nozzle Kit  
for SP100  
Air Operated  
Diaphragm Pump

**KITS05MUF**

Replacement muffler  
to keep noise to  
a minimum.

- Included with pump.



**KIT180DTPS**

55 Gallon Drop Tube



**KITS05WCH - 1/2"**  
**KITS10WCH - 1"**

Replacement wrench  
for assembling  
or disassembling  
the pump.

- Wrench included  
with pump.



**15%**  
MORE FLOW

**20%**  
MORE EFFICIENT

**66%**  
LESS  
PULSATION

**67%**  
FEWER PARTS

**50%**  
LESS TIME  
TO REPAIR

**360°**  
UNIFORM SEAL

Sotera Professional Series Rotary Vane pumps are perfect for DEF transfer pump applications. Stainless steel construction and Viton® seals ensure clean, dependable handling of DEF products with durable, long-lasting performance. Complete your pump package with our easy-to-use accessories - all the parts you need to quickly and efficiently dispense DEF.



FRSD120800MN



KIT180MAMPS



825



SV20A1NSD (shown with mounting plate and meter)

### KIT180MAMPS

- Stainless Steel Mounting Plate
- 825D075BSPP Digital Meter
- 3/4" x 6' hardwall suction hose
- 3/4" x 12' discharge hose
- 3/4" stainless steel auto nozzle
- stainless steel coupler

### KIT180MAPS

- Stainless Steel Mounting Plate
- 3/4" x 6' hardwall suction hose
- 3/4" x 12' discharge hose
- 3/4" stainless steel auto nozzle

### KIT180MPPS

- Stainless Steel Mounting Plate

	Top Selling Model			
	FRSD120800MN	FRSA120800MN	SV20A1DNSD/SV20A1DBSD	825D075BSPPS
Flow Rate [GPM/LPM]	8/30	8/30	20/76	2 - 20/7.6 -76
Motor Horsepower	1/2	1/2	1/2	-
Motor Kw	373	373	373	-
FL Motor Amps	35	7.2	7.2	-
Voltage	12 VDC	115 VAC	115 VAC	-
Port Size	3/4" BSPP	3/4" BSPP	3/4" BSPP/NPT	3/4" BSPP
Motor Type	TEFC	TEFC	TEFC	-
Max Viscosity	40 cp	40 cp	40 cp	-
Max Temp [°F / °C]	120/49	120/49	120/49	130/54
Duty	Continuous	Continuous	Continuous	n/a
Housing	304SS	304SS	304SS	Glass-Filled Poly
Vanes	Acetal	Acetal	Acetal	n/a
Seals	Viton®	Viton®	Viton®	Viton®
Accuracy	-	-	-	± 0,5%
Certification *	UL/cUL	UL/cUL	UL/cUL	-

\* Not approved for volatile applications

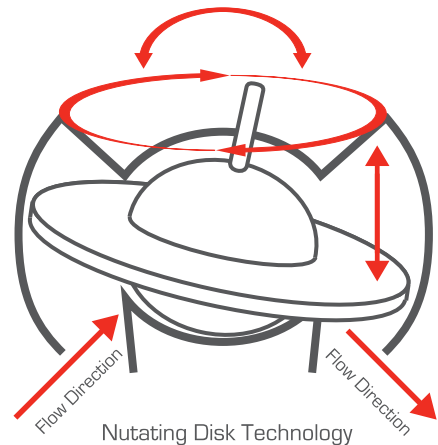
# Meter Overview

## Tuthill Positive Displacement Meters

Fill-Rite has over 50 years of industry-leading experience in the design and manufacture of positive displacement meters, shipping over 100,000 units each year. Our expertise in nutating disc and oval gear technologies make Fill-Rite meters the preferred brand for a broad range of applications in multiple markets. We offer “weights and measures approved” models for custody transfer, batching or dispensing. Whether you are tracking fuel consumption on-site or in the field, Fill-Rite offers a professional solution.

### Nutating Disc [accuracy +/- 2%]

Mechanical meters are the work horses of the Fill-Rite line. The 800 and 900 Series nutating disc mechanical meters are designed specifically to meter and totalize (gas/diesel) fuels transferred on-site. For rapid fuel transfer these are typically mated to a Fill-Rite pump, but can also be used in gravity feed applications. The flow range for these two series is 5 - 40 GPM. If you need something that is a bit more robust to handle higher flows (up to 60 GPM) and pressure (150 - 1500 PSI), look no further than the TN Series. The TN Series is an excellent solution for diesel, and many other automotive and industrial fluid applications.



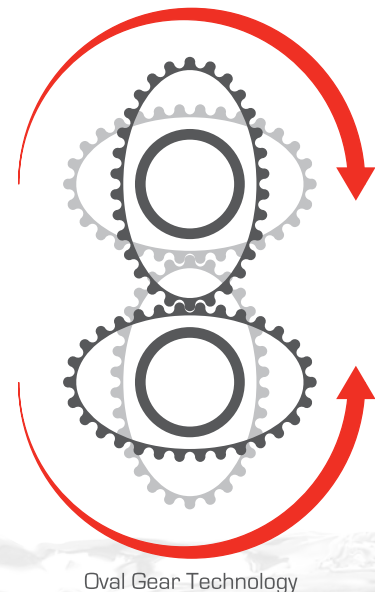
### Digital Meters

Our 900D Series (nickel coated aluminum) and 825/820 Series digital chemical (polypropylene) meters are designed for both petro chemical and chemical metering, and can handle a wide range of flows and compatibilities. These meters are designed for in-line use or mounting to our rotary vane or diaphragm pumps.

### Precision Oval Gear [accuracy +/- .05%]

Tuthill manufactures a complete series of Oval Gear Precision Meters that are available in both aluminum and stainless steel. The TS Series Meters cover a flow rate range of 8 - 200 GPM and pressure range of 0-400PSI. Weights and Measures approved models are available for certain custody transfer applications that include refined fuels and diesel exhaust fluid. Applications include: dispenser - fuels and DEF, bulk rack - high volume loading and unloading, bob tail - delivery truck (gas / diesel / home heating oil).

Our TM Series (Mini) 2-20 GPM precision meters complete the low flow range of our offering. Applications Include: additive injection, fuel consumption measurement, and more.



# FILL-RITE® High Flow/High Pressure Rugged Application Meters



TN740AN1CAA1TAI

Like all Fill-Rite products, our TN Meters are famous for rugged dependability and long service life. These meters utilize positive displacement nutating disk technology for use in non-custody transfer applications such as inventory control of refined petroleum products and non-corrosive chemicals.

High pressure versions are available in two model sizes (TN700 and TN800 series) for use in automotive fluid distribution systems, lube trucks, and similar service. With a viscosity range from 1 to 50,000 cSt, these meters can handle a wide range of temperature and viscosity conditions for a versatile solution to your metering needs.

Contact Customer Service for a full line listing of TN Meters

	TN740AN1CAA1TAI	TN760AN1CAB1GAF	TN860AN1CAB1GAC	TN860AN1CAB2GAC	TN860AN1CAB2GBC
Flow (GPM/LPM)	0.5 - 10 / 1.9 - 38	0.8 - 15 / 2.9 - 57	6.0 - 60 / 23 - 230	6.0 - 60 / 23 - 230	6.0 - 60 / 23 - 230
Max Pressure (psi/bar)	1,000/69.0	400/27.6	150/10.3	150/10.3	150/10.3
Inlet/Outlet Port	1" / 1" NPT	1½"/1½" NPT	1½"/1½" NPT	1½"/1½" NPT	1½"/1½" NPT
Meter Type	4 Digit Mech. 1/10 Gal	4 Digit Mech. Whole Gal	4 Digit Mech. Whole Gal	4 Digit Mech. Whole Gal	4 Digit Mech. Whole Gal
Mtrls of Const - Housing	Anodized Aluminum	Anodized Aluminum	Anodized Aluminum	Anodized Aluminum	Anodized Aluminum
Mtrls of Const - Seals	Viton®	Viton®	Viton®	Viton®	PTFE & Chemraz®
Mtrls of Const - Internal	PPS, Stainless Steel	PPS, Stainless Steel	PPS, Stainless Steel	PPS, Stainless Steel	PPS, Stainless Steel
Max Temp. (°F/°C)	167°/75°	167°/75°	167°/75°	167°/75°	167°/75°
Totalizer Digits	8	8	8	8	8
Meter Accuracy	+/- 2.00%	+/- 2.00%	+/- 2.00%	+/- 2.00%	+/- 2.00%
Viscosity Range (cSt)	125 - 50,000	125 - 50,000	3 - 22	1 - 2	1 - 2
Fluid Compatibility	High Viscosity Lube	High Viscosity Lube	Diesel, BioDiesel, Kerosene	Gasoline, Water	E85, E100, ALS, Solvents

## Mechanical Meters

Fill-Rite's line of 3-wheel and 4-wheel mechanical flow meters are designed to meet the stringent demands of customers who need to monitor fuel usage accurately and dependably. Rugged construction, easy to read numbers, and the flexibility of horizontal or vertical positioning are just three features of these superior meters. Plus, all can be field calibrated for the utmost accuracy.



807C



# Mechanical Meters



## Gravity Feed Models

	806C	806CL	807C	807CL	807C1	807CL1
Description	3-Digit (Gallon)	3-Digit (Liter)	3-Digit (Gallon)	3-Digit (Liter)	3-Digit (Gallon)	3-Digit (Liter)
Flow Rate (GPM/LPM)	5 - 20/19-75	5 - 20/19-75	5 - 20/19-75	5 - 20/19-75	5 - 20/19-75	5 - 20/19-75
Max Pressure (psi/bar)	50/3.5	50/3.5	50/3.5	50/3.5	50/3.5	50/3.5
Inlet/Outlet	1" / 1"	1" / 1"	3/4" / 3/4"	3/4" / 3/4"	1" / 1"	1" / 1"
Matls of Const - Housing	Aluminum	Aluminum	Aluminum	Aluminum	Aluminum	Aluminum
Mtrls of Const - Seals	Viton® & Buna	Viton® & Buna	Viton® & Buna	Viton® & Buna	Viton® & Buna	Viton® & Buna
Mtrls of Const - Internal	PPS, Stainless	PPS, Stainless	PPS, Stainless	PPS, Stainless	PPS, Stainless	PPS, Stainless
Compatible Fluids	Gasoline, Diesel, B20, E15, Kerosene					
Certification	UL/cUL, CE, Ex	UL/cUL, CE, Ex	UL/cUL, CE, Ex	UL/cUL, CE, Ex	UL/cUL, CE, Ex	UL/cUL, CE, Ex

	807CN1	807CMK	901	901L	9011.5	901L1.5
Description	3-Digit (Gallon)	3-Digit (Gallon)	4-Digit (Gallon)	4-Digit (Liter)	4-Digit (Gallon)	4-Digit (Liter)
Flow Rate (GPM/LPM)	5 - 20/19-75	5 - 20/19-75	6 - 40/23-151	6 - 40/23-151	6 - 40/23-151	6 - 40/23-151
Max Pressure (psi/bar)	50/3.5	50/3.5	50/3.5	50/3.5	50/3.5	50/3.5
Inlet/Outlet	1" / 1"	3/4" / 3/4"	1" / 1"	1" / 1"	1 1/2" / 1 1/2"	1 1/2" / 1 1/2"
Matls of Const - Housing	Nickel Plate Aluminum	Aluminum	Aluminum	Aluminum	Aluminum	Aluminum
Mtrls of Const - Seals	Viton®	Viton® & Buna	Viton® & Buna	Viton® & Buna	Viton® & Buna	Viton® & Buna
Mtrls of Const - Internal	PPS, Stainless	PPS, Stainless	SS, Steel, Polyester	SS, Steel, Polyester	SS, Steel, Polyester	SS, Steel, Polyester
Compatible Fluids	+Non-Potable Water	Gasoline, Diesel, B20, E15, Kerosene				
Certification	UL/cUL, CE, Ex	UL/cUL, CE, Ex	UL/cUL, CE, Ex	UL/cUL, CE, Ex	UL/cUL, CE, Ex	UL/cUL, CE, Ex

	901N1.5	901MK300V	901LMK300	901MK4200	901LMK4200
Description	4-Digit (Gallon)	4-Digit (Gallon)	4-Digit (Liter)	4-Digit (Gallon)	4-Digit (Liter)
Flow Rate (GPM/LPM)	6 - 40/23-151	6 - 40/23-151	6 - 40/23-151	6 - 40/23-151	6 - 40/23-151
Max Pressure (psi/bar)	50/3.5	50/3.5	50/3.5	50/3.5	50/3.5
Inlet/Outlet	1 1/2" / 1 1/2"	1" / 1"	1" / 1"	1" / 1"	1" / 1"
Matls of Const - Housing	Nickel Plate Aluminum	Aluminum	Aluminum	Aluminum	Aluminum
Mtrls of Const - Seals	Viton®	Viton® & Buna	Viton® & Buna	Viton® & Buna	Viton® & Buna
Mtrls of Const - Internal	SS, Steel, Polyester	SS, Steel, Polyester	SS, Steel, Polyester	SS, Steel, Polyester	SS, Steel, Polyester
Compatible Fluids	+Non-Potable Water	Gasoline, Diesel, B20, E15, Kerosene			
Certification	UL/cUL, CE, Ex	UL/cUL, CE, Ex	UL/cUL, CE, Ex	UL/cUL, CE, Ex	UL/cUL, CE, Ex



900DP



900DB

**The 900DP Meter** - With a pulser and intrinsically safe barrier included, the 900DP is the ultimate in convenience. It saves you the time and trouble of sourcing a compatible barrier to provide intrinsically safe operation in explosive or combustible atmosphere installations.

All Fill-Rite positive displacement nutating disc meters are ideal for inline use, or mounting to one of our rotary vane or diaphragm pumps. The rugged corrosion-resistant construction, provides a durable product for the most demanding applications. Our digital meters are easy to calibrate and allow for simple selection of metering units. Incredible utility, strong visual clarity and amazing accuracy are standard features on every Fill-Rite digital meter.



820

	820	900DB	900DB1.5	900DP	900DP1.5
Flow Rate (GPM/LPM)	2 - 20/7-75	6 - 40/23-151	6 - 40/23-151	6 - 40/23-151	6 - 40/23-151
Max Pressure (psi/bar)	120/8.2 @ 70°F	50/3.5	50/3.5	50/3.5	50/3.5
Inlet/Outlet	1"/1"	1"/1" NPT	1½"/1½" NPT	1"/1" BSPT	1½"/1½" BSPT
Mats of Const - Body	Polypropylene	Nickel Plated Aluminum / Aluminum			
Mtrls of Const - Seals	Viton®	Buna	Buna	Buna	Buna
Mtrls of Const - Internal	Stainless, PPS	Stainless Steel, Steel, Polyester, Acetal			
Power Source	2 AA Batteries	2 AA Batteries	2 AA Batteries	AC Power w/ use of Barrier	
Calibration	Ounces, Pints, Quarts, Liters, Gallons. and user defined units				
Certification	-	CE, Ex	CE, Ex	CE, Ex	CE, Ex
Compatible Fluids	Water, light oils, mild chemical	Gasoline, Diesel, Biodiesel up to B20, Kerosene, E15, Mineral spirits, Stoddard solvents, and Heptane Intrinsically safe barrier must be used for gasoline in 900DP			

\* All Series 900 Meters are available with BSPT inlet/outlet - Model Numbers - 900DBBSPT, 900DB1.5BSPT, 900DPBSPT, 900DP1.5BSPT

# Specialty Dispenser Meters

## Dispenser Meters

Tuthill offers the most dependable precision meters on the market for fuel and diesel exhaust fluid dispenser applications. From DEF to pure ethanol, we are able to accommodate a wide range of fluid compatibilities through a variety of materials. Our meters conform to the Weights and Measures Handbook 44 requirements.



TS06A



TS06C

	TS04A	TS04C	TS06A	TS06C	TS10A	TS10C	TS15A	TS15C
Flow Rate (GPM/LPM)	1.5-15/5.5-56		2-20/8-76		4-40/15-150		6-60/23-230	
Linearity / Linearity Downturn	better than $\pm 0.20\%$ / 10:1							
Repeatability	better than $\pm 0.05\%$ (under constant conditions)							
Pressure Rating (at 100°F/40°C)	50 PSI = 3.5 BAR = 350 kPa							
Temperature Rating	-40° to +122°F = -40°C to +50°C							
Certifications	2G Ex d IIA T4, -20°C < Ta < +60° C, ATEK, IEC Ex & IP65, UL & cUL							
Unscaled Pulse Resolution (PPG/PPL)	800/ 212		400/ 106		1,728/ 471		1,013/ 268	
Mats of Const - Case	AA*	SS**	AA*	SS**	AA*	SS**	AA*	SS**
Mats of Const - Gears	PPS with carbon bearings							
Mats of Const - Posts	Stainless Steel							
Mats of Const - Seals	Viton™ or PTFE™							

\* Anodized Aluminum \*\*Stainless Steel

## LPG Meters

Whether your needs are for retail or wholesale dispensing, Fill-Rite accommodates single or double hose metering with simplicity and precision for a wide range of LPG installation options.



TS06AS83

	TS06AS83 (LPG Single) and TS06AS84 (LPG Twin)
Flow Rate (GPM/LPM)	2-20 / 7.5-75
Linearity/Linearity Downturn	better than 0.50% / 10:1
Repeatability	0.20%
Pressure Rating (at 100°F/40°C)	350 PSI at 100°F = 24 BAR at 40°C
Temperature Rating	-40°F to +300°F = -40°C to +150°C
Certifications	Weights & Measures US, CE Mark, UL, cUL & Atex
Unscaled Pulse Resolution (PPG/PPL)	380/100
Mats of Const - Case	Anodized Aluminum
Mats of Const - Gears	Stainless Steel
Mats of Const - Posts	Stainless Steel
Mats of Const - Seals	UL Buna N



The TS Series is well suited for use in fuel process transfer, high speed batching and loading, tank truck meters, stationary dispensing, industrial and petro-chemical refining and processing. Combined with a mechanical/digital register, printer, or solenoid batching, it is possible to build an application specific system that delivers performance, accuracy, and easy maintenance making the TS Series the intelligent choice.

Available in Aluminum or Stainless Steel, TS Series precision meters offer a full range of metering options from 1", 1½", 2", and 3" sizes with 40-200 GPM at 150 PSI. These highly precise meters are available in a wide range of configurations to accommodate different temperatures, viscosities, chemical compatibilities, mechanical/digital register calibrations, strainers, filters, air eliminators, air check, backpressure, and preset valves, flanges, and seals.





# Positive Displacement Oval Gear Meters for Fuels



**Mechanical Fuel Meters For Aviation Fuel, Bio-Diesel, Diesel Fuel, Light Fuel Oils, Gasoline, Glycols, Kerosene and Water**

	TS15A	TS20A	TS30A
Flow Rate (GPM/LPM)	60/227	150/568	200/757
Max Pressure (psi/bar)	150/10.3	150/10.3	150/10.3
Inlet/Outlet Port	1½" NPT	2" NPT	3" NPT
Register Type	5 Wheel Mechanical	5 Wheel Mechanical	5 Wheel Mechanical
Matls of Const - Body	Aluminum	Aluminum	Aluminum
Mtrls of Const - Seals	Viton® or PTFE	Viton® or PTFE	Viton® or PTFE
Rotors and Bearings	LV-PPS/Carbon	LV-PPS/Carbon	LV-PPS/Carbon
Max Temp. Range (F°/C°)	- 40° - 180° / - 40° - 80°	- 40° - 180° / - 40° - 80°	- 40° - 180° / - 40° - 80°
Totalizer Digits	8	8	8
Meter Accuracy	± 0.05%	± 0.05%	± 0.05%
Viscosity Range (cSt)	Up to 300 - can be used with higher viscosities, meter will be derated, consult factory for recommendations		

## Best Selling Models - w/ Mechanical Registers

TS15AV04ATCBMXAXX - Meter and Mechanical Register (1/10 Gallon)

TS20AV04ATCBMXAXX - Meter and Mechanical Register (1/10 Gallon)

TS20AV06ATCBMXAS4 - Meter, Mechanical Register (1/10 Gallon) , Strainer (40 Mesh) and Air Eliminator

TS20AV04ALCBMXAXX - Meter and Mechanical Register (Liter)

TS20AV06ALCBMXAS4 - Meter, Mechanical Register (Liter), Strainer (40 Mesh) and Air Eliminator

TS30AV04AGCBMXAXX - Meter and Mechanical Register (Whole Gallons)

TS30AV06AGCBMXAS4 - Meter, Mechanical Register (Whole Gallons), Strainer (40 Mesh) and Air Eliminator

TS30AV04ALCBMXAXX - Meter and Mechanical Register (Liter)

TS30AV06ALCBMXAS4 - Meter, Mechanical Register (Liter), Strainer (40 Mesh) and Air Eliminator

For Full Line Listing Including Digital Register Options, Contact Customer Service



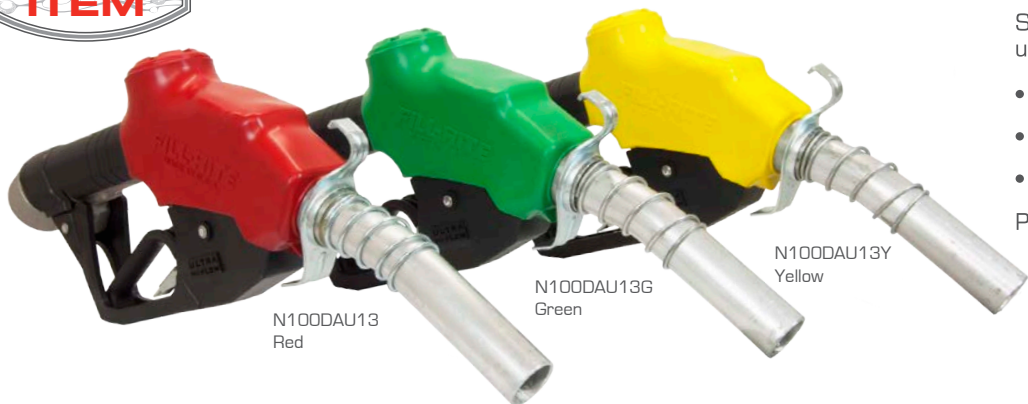
## The Ultra Hi-Flow Nozzle Family

Industry's best flow rate. 10-30% faster than competing brands

Fill a 200 gallon tank in less than seven minutes. That's real time saved... every time you fill the tank.

Suitable for gasoline, diesel, biodiesel up to B20, kerosene, and E15.

- Angled inlet reduces hose stress.
  - Integral hook and spout spring.
  - Three locking flow-rate positions.
- Patented design.



	FRHMN075S	FRHMN100S	N075DAU10	N075UAU10
Description	¾" Aluminum Nozzle	1" Aluminum Nozzle	¾" Automatic Nozzle w/ Hook, Diesel Spout	¾" Automatic Nozzle w/ Hook, Unleaded Spout
Certification	UL/cUL	UL/cUL	UL/cUL	UL/cUL
Compatible Fluids	Diesel, Gasoline, Kerosene	Diesel, Gasoline, Kerosene	Diesel, Gasoline, Kerosene	Diesel, Gasoline, Kerosene

	N100DAU10	N100DAU13	FRNA075DAU10	FRNA100DAU00
Description	1" Automatic Nozzle w/ Hook	1" Ultra High Flow Automatic Nozzle w/ Hook	¾" Arctic Auto Nozzle with Hook and Diesel Spout	1" FNPT Arctic Automatic Nozzle with Diesel Spout
Certification	UL	UL/cUL	UL/cUL	UL/cUL
Compatible Fluids	Diesel, Gasoline, Kerosene	Diesel, Gasoline, Kerosene	Diesel, Gasoline, Kerosene	Diesel, Gasoline, Kerosene



FRH07512



FRH10014



FRHA10020

	300F7773	700F3135	FRH07512	FRH07514	FRH07520
Description	1" x 12' Hose, UL	¾" x 12' Hose, UL	¾" x 12' Hose	¾" x 14' Hose	¾" x 20' Hose

	FRH10012	FRH10014	FRH10020	FRHA07515	FRHA10020
Description	1" x 12' Hose	1" x 14' Hose	1" x 20' Hose	¾" x 15' Arctic Hose	1" x 20' Arctic Hose

# Accessories



F1810HC1



F1810PMO



F4030PMO

	F1810HC1	F1810HMO	F1810PC1	F1810PMO	F4030PMO	F4010PMO
Description	Clear Bowl Filter w/Drain kit	Spin on Filter 10 Micron	Clear Bowl Filter w/Drain kit	Spin on Filter 10 Micron	Spin on Filter - 30 Micron	Spin on Filter - 10 Micron
Filter Type	Hydrosorb	Hydrosorb	Particulate	Particulate	Particulate	Particulate
Max Flow Rate (GPM/LPM)	18/68	18/68	18/68	18/68	40/151	40/151



1200KTG9075 3/4" Filter Head



700ACCF7017 1" Filter Head

Description	For use with F18 Particulate and Hydrosorb Filters	For use with F40 Particulate Filters
-------------	--	--------------------------------------



1200KTG9099



30F5301

	1200KTG9099	30F1879	30F5301
Description	1" Telescoping Suction Pipe	1/2" Telescoping Suction Pipe	1/2" Telescoping Suction Pipe
Material	Steel	Polypropylene	Steel
Length	20" to 34 3/4"	21" to 36"	21" to 36"



FRTC



FRTCB

Description	Vented Fuel Cap for Tanks [cap only]	Vented Fill Cap with 2" Base for Tanks
-------------	--------------------------------------	--



S034H1311



S075H1314



S100H1312



S100H1315

Description	3/4" Aluminum Single Plane Swivel	3/4" Aluminum Multi-Plane Swivel	1" Aluminum Single Plane Swivel	1" Aluminum Multi-Plane Swivel
-------------	-----------------------------------	----------------------------------	---------------------------------	--------------------------------



Excellence at work. Excellence in life.

8825 Aviation Drive  
Fort Wayne, IN 46809  
USA Customer Service:  
Tel: 800.634.2695 or 260.747.7524  
Fax: 800.866.4861

**FILL-RITE**

[www.fillrite.com](http://www.fillrite.com)

**SOTERA**  
SYSTEMS

[www.sotera.com](http://www.sotera.com)

