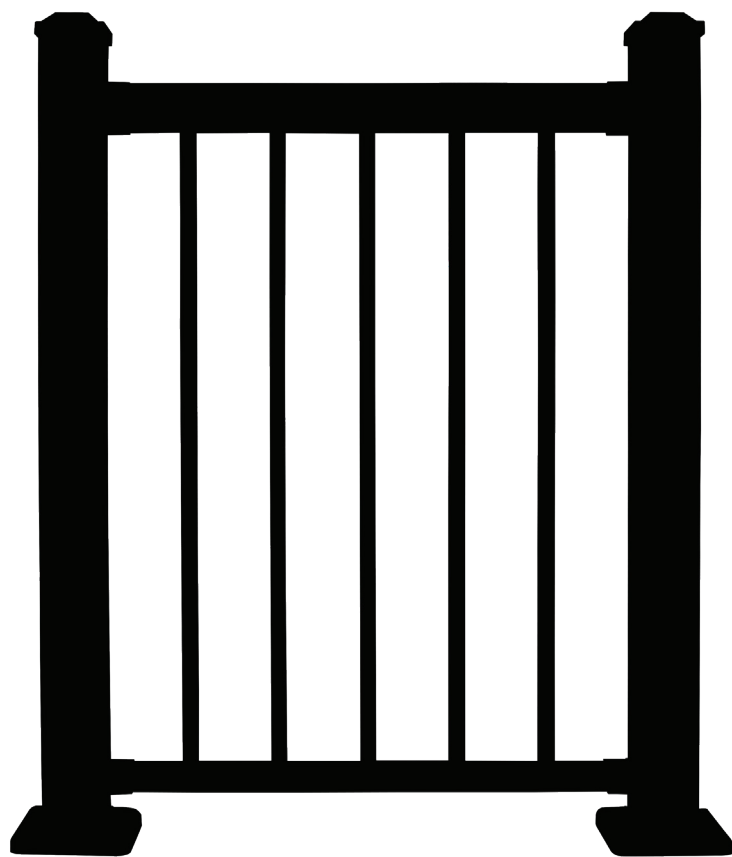


FAIRWAY

ARCHITECTURAL RAILING SOLUTIONS

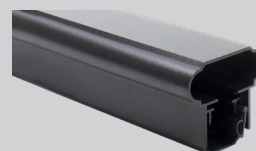


SQUARE ALUMINUM BALUSTERS

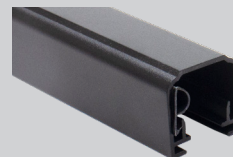
A210 ALUMINUM RAILING INSTALLATION QUICK GUIDE

LEVEL & STAIR* KIT INCLUDES:

- Top Rail
- Sub-Rail with Rail Insert



- Bottom Rail with Rail Insert



- Top Rail Connector Brackets with Screws
- Bottom Rail Connector Brackets with Screws
- Rail Support(s)
- Square Balusters
- Installation Template (*not included in stair kit)

TOOLS NEEDED:

- Drill with #2 Square Drive Bit
- Circular Saw
- Speed Square
- Tape Measure
- Drill Extension



A210

LEVEL INSTALLATION

BEFORE STARTING

- Review all local building codes.
- Wear proper safety equipment.

STEP 1 GETTING STARTED

- Plumb all posts or mounting surfaces. Do not install post trim at this time. Post trim should be installed at completion of railing installation.
- Determine required bottom rail height from deck surface to bottom of rail based on local building codes.

STEP 2 INSTALL MOUNTING BRACKETS

- Insert brackets into template per desired rail height – middle bracket hole location for 36" high railing, top bracket hole location for 42" high railing.

STEP 3 CUT RAILS & INSTALL BOTTOM RAIL

- Measure distance between inside mounting brackets.
- Mark bottom rail to correct length.
- Ensure there is equal & maximum distance from baluster holes on both ends of top and bottom rails.
- Add 3/4" to bracket mark. Repeat for all top and bottom rail bracket marks.
- Cut bottom rail, top sub rail, and top cap rail the same length, ensuring baluster holes line up.
- Slide bottom bracket cover onto both sides of the rail and set rail into place. Secure rail by installing two #8 x 3/4" self-drilling screws through holes in both sides of each bracket. Snap bracket cover over the bracket.

STEP 4 INSERT BALUSTERS

- Insert balusters into bottom rail making sure they are fully seated into rail.
- Make sure that the "P" insert remains within the bottom rail channel.

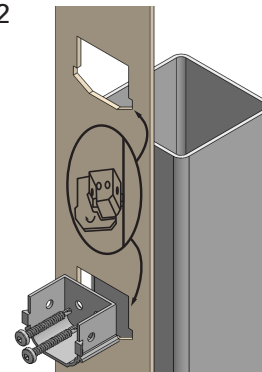
STEP 5 INSTALL TOP RAIL & PANELS

- Holding the sub rail at an angle above the baluster, start at one end to insert first baluster and tap lightly.
- Insert remaining balusters making sure they are seated completely in both bottom and sub rails.
- Slide top bracket cover onto both sides of top rail. Place top cap rail over sub-rail.
- Secure rail by installing two #8 x 3/4" self drilling screws through holes in both sides of each bracket. Snap bracket cover over the bracket.

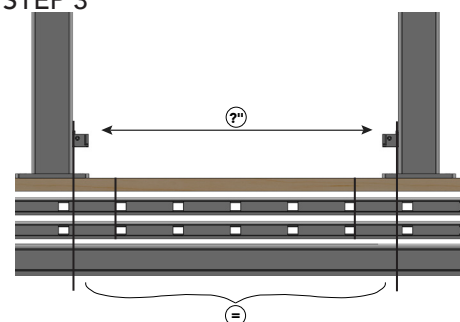
STEP 6 FINISHING STEPS

- Tap post caps in place.
- Install two-piece, snap together trim.
- Measure to the underside of the bottom rail and cut rail support to measured length.
- Measure to the center of the bottom rail and secure rail support with 3/4" stainless steel screw.

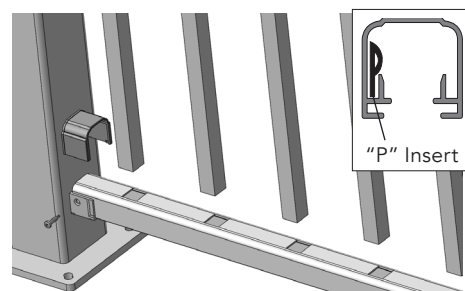
STEP 2



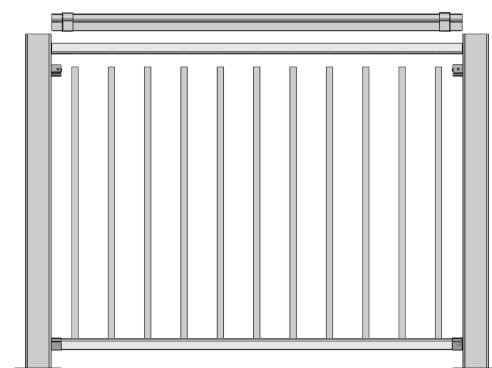
STEP 3



STEP 4



STEP 5



Fairway Architectural Railing Solutions will not be held liable for incorrect or unsafe installations by the installer. It is the installer's responsibility to secure proper building permits, review local codes and safety needs and meet or exceed them. The instructions provided by Fairway are a guide and may not account for every special circumstance. The installer must identify and execute the installation approach that is appropriate for every application.

STAIR INSTALLATION

BEFORE STARTING

- Review all local building codes.
- Wear proper safety equipment.

STEP 1 GETTING STARTED

- Plumb all posts or mounting surfaces.
Do not install post trim at this time. Post trim should be installed at completion of railing installation.
- Determine required bottom rail height from deck surface to bottom of rail based on local building codes.

STEP 2 MARK & CUT RAILS

- Use blocking to achieve desired rail sweep height.
- Lay bottom rail onto blocking next to post and clamp using a quick clamp.
- Balance out baluster end spacing for equal distance at top and bottom of stairs.
- Place one baluster in each end hole and place the sub-rail on top.
- Make sure balusters are parallel to the posts and clamp the sub-rail to each post.
- Hold brackets on post next to rail and mark rail at all bracket locations.
- Unclamp railing section from post.
- Add 3/4" to bracket mark. Repeat for all top and bottom rail bracket marks.
- Transfer top sub-rail measurement to top cap rail.
- Cut all marks at 90° angle and slide bottom brackets onto ends of rail.

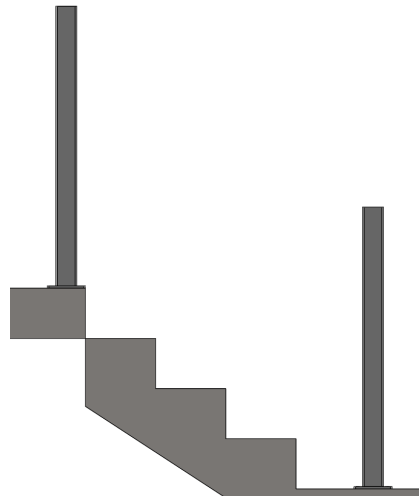
STEP 3 INSTALL BRACKETS & RAIL SECTION

- Place bottom rail onto blocking between posts and pre-drill bracket holes using a 1/8" drill bit.
- Secure rail using the provided 1-1/2" stainless steel screws.
- Insert balusters into bottom rail making sure they are fully seated.
- Insert sub-rail into the top cap rail and slide brackets and tap lightly.
- Starting at the top of the stairs, insert first baluster.
- Insert remaining balusters making sure they are fully seated in the bottom and top rail.
- Pre-drill bracket holes using 1/8" bit and secure with 3/4" stainless steel screw.

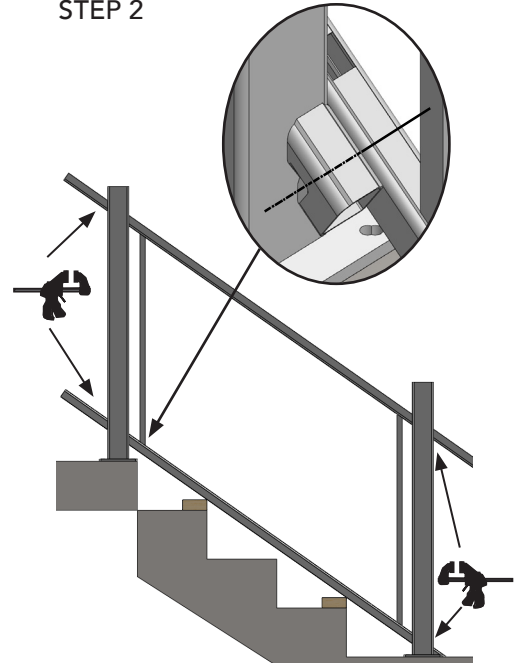
STEP 4 FINISHING STEPS

- Tap post caps in place.
- Install two-piece snap-together trim.

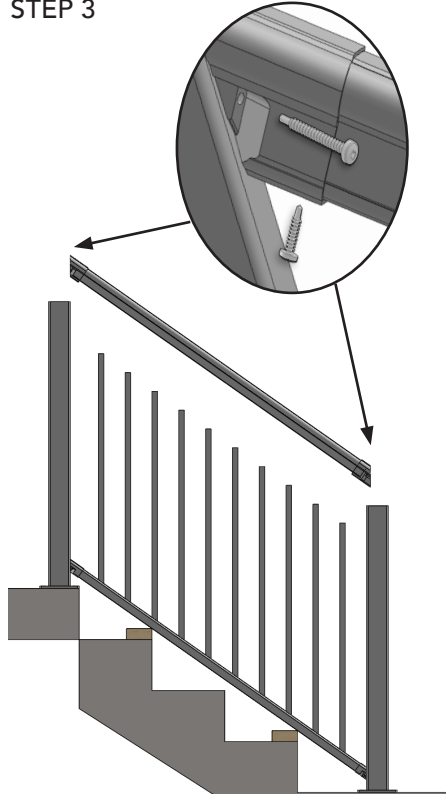
STEP 1



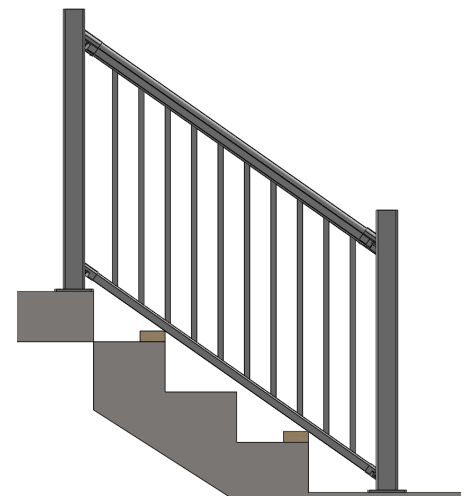
STEP 2



STEP 3



STEP 4



Fairway Architectural Railing Solutions will not be held liable for incorrect or unsafe installations by the installer. It is the installer's responsibility to secure proper building permits, review local codes and safety needs and meet or exceed them. The instructions provided by Fairway are a guide and may not account for every special circumstance. The installer must identify and execute the installation approach that is appropriate for every application.

CLEANING AND MAINTENANCE TIPS FOR YOUR RAILING

It's easy to maintain the great look of your Fairway Aluminum System. Like anything exposed to the elements, your railing or fence will get dirty, but in most cases you can simply spray the dirt off with your garden hose. For more stubborn dirt or stain removal, follow these simple instructions:

NOTE: BE SURE TO PROTECT SHRUBBERY FROM DIRECT CONTACT WITH CLEANING AGENTS.

Stubborn Dirt

1. Use a slightly moist Mr. Clean Magic Eraser Cleaning Pad® to scrub your railing or fence. This should remove most stains.
2. Use an ordinary soft bristle wash brush and scrub your railing or fence just like you would wash your car.
3. If the dirt is difficult to remove, such as soot found in industrial areas, wash the railing or fence with a solution made up of the following:
1/3 cup powder detergent (e.g. Tide, Fab, or equivalent powder detergent)
2/3 cup household cleaner (e.g. Soilax, Spic & Span or equivalent)
1 gallon of water
4. If mildew is a problem in your area add 8 fluid ounces of liquid laundry bleach to above solution.
5. When washing your railing or fence, prevent streaking by starting at the bottom and working up to the top.
6. If stubborn stains exist, follow the precautionary labeling instructions on the cleaning agent container.

Stain Removal

1. Light oils and greases, heavy grease, caulking compounds, wax, crayon, asphalt, tars, etc.:
 - a. Use a slightly moist Mr. Clean Magic Eraser Cleaning Pad® scrub your railing or fence.
 - b. Cleaning Agents: Mineral spirits, VMP naphtha, auto tar remover.
 - c. Preparation: Remove excess with plastic or wood scraper.
 - d. Special cleaning procedures: Use soft cloth to apply mineral spirits.*

* Maintain light pressure to avoid polishing stained area. After removing stain, rinse area thoroughly with clean water.
2. Inks (marking), nail polish, paint, lipstick, gum:
 - a. Cleaning agents: Cleaning fluid (Trichloroethylene)
 - b. Preparation: Remove excess with plastic or wood scraper. Chill gum to remove excess.
 - c. Special cleaning procedures: Use soft cloth to apply cleaning fluid*.

* Maintain light pressure to avoid polishing stained area. After removing stain, rinse area thoroughly with clean water.
3. Rust stains:
 - a. Cleaning agents: Oxalic acid, auto radiator cleaner, Bright bowl), Riddo-Rust
 - b. Preparation: Make solution of 1 tablespoon of oxalic acid crystals to 1 cup warm water.
 - c. Special cleaning procedures: Apply oxalic acid solution with soft bristle brush. Wipe with damp cloth and then flush with rust free water (use rubber gloves and eye protection).
4. Stubborn Stains:
 - a. Use a slightly moist Mr. Clean Magic Eraser Cleaning Pad® scrub your railing or fence.
 - b. Cleaning agents: Xylene, Lacquer Thinner procedure.
 - c. Preparation: Try procedures 1, 2, or 3. If they don't remove the stains, then use this procedure.
 - d. Dampen small section of cloth with xylene. Rub vigorously on the affected area.*

* Maintain light pressure to avoid polishing stained area. After removing stain, rinse area thoroughly with clean water.

INSTALLER

Leave this page with property owner or manager.

PROPERTY OWNER/MANAGER

Register warranty at FairwayRailing.com/warranty-registration.

15 YEAR LIMITED WARRANTY TERMS, CONDITIONS AND LIMITATIONS

1. The manufacturer's (FAIRWAY Architectural Railing Solutions (FAIRWAY®) sole liability and the owner's only remedy shall be as follows:
 - a. If a problem occurs, FAIRWAY, at its sole discretion, may elect either to repair or replace the defective part(s) of the railing or provide reimbursement limited to cost of materials at time of purchase. Due to normal aging and weathering of material, it may not be possible to perfectly match the colors of the old and new materials and therefore FAIRWAY is not responsible for any color differences that may occur. FAIRWAY is not responsible for discontinuance of a color.
 2. FAIRWAY warrants only those products manufactured and sold under the A210 (Slimline) and A310 (Solutions) name. This Limited Warranty extends only to the original purchaser according to terms specified herein. FAIRWAY shall not be liable for and this warranty does not apply to any terms, failure, defect or damage resulting from or connected with the following:
 - a. Defects not caused by FAIRWAY (for example, but not limited to: accidents, misuse, improper applications or installations contrary to industry or A210 (Slimline) and A310 (Solutions) standards).
 - b. Product that has been painted or had its surface treated or cleaned with an abrasive chemical or material.
 - c. Product subject to impact of foreign objects, tornado, hurricane, other violent storms, fire, air pollutants, normal weathering of surfaces, abnormal discoloration due to improper maintenance, or any other acts of God.
 - d. Improper installation of A210 (Slimline) and A310 (Solutions) or defects caused by their installation.
 - e. A210 (Slimline) and A310 (Solutions) Limited Warranty will not be applicable for products that are covered by a specific and separate warranty or duration.
 - f. Products sold, shipped or installed outside of the Continental United States shall have a limited duration of this coverage to 10 years from date of purchase.

For complete warranty please go to our website.

WARNING: Fairway Architectural Railing Solutions and its employees are not qualified to approve, recommend or advise as the suitability of this product for all possible local code requirements and end use applications. Your local code authority or fire marshal's office should be consulted as to its safety for its intended uses. Like other building materials, Fairway Architectural Railing Solutions cannot be expected to contain spirited large stock animals, and therefore suggest additional measures using hot or tape wire as a deterrent and further makes no representation about and does not warrant against such an occurrence.

FAIRWAY® 15 YEAR LIMITED WARRANTY REGISTRATION PROCESS: Warranty registration can be accomplished electronically by visiting www.fairwayrailing.com/warranty-registration/ and registering within thirty (30) days after completion of installation of products in order for purchaser to be eligible for coverage under warranty terms. **NOTE: PROOF OF PURCHASE IS NECESSARY TO EXERCISE CLAIMS AND REMEDIES FOR ANY OCCASION. PLEASE SAFEGUARD ACCORDINGLY.** Upon receipt of all necessary information we will process and return a digital copy within thirty (30) days. The warranty will be certified and issued in PDF format to the email address supplied at the time of registration. If email is not available a hard copy will be mailed to the supplied address in lieu of the digital document. **CLAIMS AND REMEDIES:** A claim under this warranty must be reported in writing with proof of purchase to: Fairway Architectural Railing Solutions, P.O. Box 37, Mount Joy, PA 17552, within thirty (30) days of the date that the defect is first discovered or reasonably could be discovered. A reasonable time should be allowed for inspection purposes, or at FAIRWAY's option, shipment of a sample to the above address for examination of the alleged defective product. FAIRWAY shall be the sole judge of whether or not the material is defective and whether the defect is due to manufacturing defects. If, after its inspection, FAIRWAY determines the claim is in accordance with the terms of this Limited Warranty, FAIRWAY agrees at its option to replace the section or part of the product, or refund the prevailing cost of the product in your geographical area at the time of replacement or the original purchase price, whichever shall be less. This warranty does not cover the cost of removal of any defective products or the cost of installation of any replacement product furnished under the terms of the warranty. Incidental or consequential damages and resulting cost incurred as a result of a coverage claim are excluded and will not be paid. Statements, remarks, agreements, representations, promises or understandings, oral or written, contrary to the terms contained herein, even those made by an agent of FAIRWAY, will be recognized as neither implied warranties nor those of merchantability or fitness for use of specific applications. Some states may not allow the limitation of incidental or consequential damages or limitations on how long an implied warranty lasts, so many of the limitations may not apply to you. This warranty gives specific rights and there may also be other legal rights which vary from state to state. By acceptance and use of this product, purchaser agrees, that FAIRWAY liability and the purchaser's exclusive remedy for breach of any warranty shall be limited in all events to replacement of any section or part of this product which is found to be defective and shall be returned to FAIRWAY.