

*Bringing your ideas
to life*



ENVIRONMENTAL TECHNOLOGY INC.
PRODUCT GUIDE

Creating innovative coatings, castings and molding products for the professional artist, crafter and hobbyist since 1969. ETI is recognized for its quality products around the world.

As the producer of EnviroTex[®], the original two-part epoxy coating, ETI continues to develop products such as EasyCast[®] Clear Casting Epoxy, EasySculpt[®] Epoxy Modeling Clay, EasyMold[®] Silicone Rubber, Putty and Paste mold making products and FastCast[®] Casting Urethane. Our products are attractively packaged, meet USA and Canadian label requirements, and include informative instructions with project ideas.

EnviroTex Lite[®]

EnviroTex Lite[®]—the original two-component pour-on epoxy coating! Easy to use, professional results with a clear glass-like finish!

One coat equals up to 60 coats of varnish! No Solvents or VOC's. Perfect for bar and tabletops, clocks, plaques, photographs, certificates, diplomas and more! Waterproof, heat and alcohol resistant!

4 oz sampler kit.....	02007
8 oz kit.....	02008
16 oz kit.....	02016
32 oz kit.....	02032
1/2 gallon kit.....	02064
1 gallon kit.....	02128



Crystal Sheen[®]

This two-part epoxy is easy to apply and cures with the look of liquid glass.

Crystal Sheen[®] preserves and enhances table and bar tops with a tough durable surface. The glass-like epoxy enriches color, enhances wood grains and has superior hardness. Waterproof, heat and alcohol resistant. 15-20 minute working time. Used commercially on table and bar tops for over 40 years!.

8 oz kit.....	02208	32 oz kit.....	02232
16 oz kit.....	02216	1 gallon kit.....	02228



EasyCast® Clear Casting Epoxy

This one-to-one formula is perfect for casting small decorative items such as jewelry pieces, buttons, knobs, figurines, cosplay props and more! Long open time, excellent bubble release!

This two-component, low odor, solvent free, epoxy can be tinted with Castin'Craft® opaque pigments for solid colors or transparent dyes to create a colored glass look.

8 oz kit	33008	32 oz kit	33032
16 oz kit.....	33016	1 gal kit	33128

EnviroTex® Jewelry Resin

With this one-to-one formula creating heirloom quality, professional jewelry pieces is fun and easy!

One thick coat equals 50 coats of varnish! EnviroTex Jewelry Resin has a long open time and amazing bubble release with crystal clear clarity. The UV resistant formula has a pleasing citrus scent, is waterproof, heat and chemical resistant.

2 oz kit.....	02004
4 oz kit.....	02504

The 2 oz kit includes instructions, measure/mix tools and enough product to fill 20 large deep bezels.



NEW FastCast™ Urethane Casting Resin

Sets in 10 minutes! Ideal for casting, quick prototyping, miniatures, models, taxidermy and more!

Easy to use, this odorless one-to-one ratio, clear urethane casting resin turns white once set. FastCast® can be colored with Castin'Craft® pigments. Once cured FastCast® can be drilled, sanded, shaped, tapped, machined, stained and painted.



8 oz kit	32008
16 oz kit	32016
32 oz kit	32032

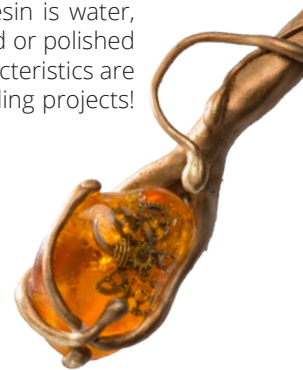


Castin'Craft® Polyester Casting Resin

Embed almost any object in crystal clear plastic— coins, shells, rocks, dried flowers, butterflies, insects and more!

Optically, Castin'Craft® Polyester Casting Resin is one of the clearest and hardest of all casting resins available today. It can be colored with Castin'Craft® opaque pigments for a solid appearance or translucent dyes for a transparent effect. Finished castings can be turned on a lathe for projects such as pens, vases, etc. Casting Resin is water, heat and chemical resistant and can be buffed or polished to a high sheen if desired. These unique characteristics are why so many professionals use it for demanding projects!

16 oz kit with 1/2 oz catalyst.....	34016
32 oz kit with 1/2 oz catalyst.....	34032
1 Gallon kit with 1 oz catalyst	34128
16 oz without catalyst	00175
32 oz without catalyst.....	00183
1 Gallon without catalyst	00191
Catalyst 1/2 oz	46388
Catalyst 1 oz	46361
NEW Catalyst 2 oz	46392





EasySculpt® Epoxy Modeling Clay

Strong, professional-grade, non-shrinking, cures without firing!

EasySculpt® offers a smooth porcelain-like texture and yet is more tough and durable than fired clay. Once cured, EasySculpt® is waterproof, chemical and heat-resistant and can be sanded, drilled, shaped, machined and finished with most paints and finishes. It has excellent adhesion to stones, crystals, glass, metal, wood, and provides the crafter or professional endless creative possibilities.

1 lb kit.....02616 4 lb kit.....02664

EnviroTex Jewelry Clay®

This unique blend of premium epoxy and clay powders cures with a creamy, smooth porcelain-like finish

Advanced formula is easy to mix, has a long working time and once cured is hard, durable and impact resistant. EnviroTex Jewelry Clay® will bond to most surfaces including glass, metal, wood, etc. and will not shrink during the curing process. It is waterproof, heat and chemical resistant. In its uncured form EnviroTex Jewelry Clay® can be colored with pigments or painted when cured. The kit includes easy step-by-step photos. Pleasant citrus scent.



4 oz kit.....02604



Mold Builder® Natural Latex Rubber

Duplicate figurines, sculptures and other items with safe, brushable latex rubber!

Quick drying, fast build up and economical to use, Mold Builder® peels easily from model. It is flexible, stretchable, and harmless to most surfaces—will not stick to metal, clay, ceramics, plaster, wood or Plasticine clay. Mold Builder® molds are durable and reusable. Use them to cast paper, plaster, candle wax, soap, casting resin or casting epoxy.

16 oz.....00779
32 oz.....00787
1 gallon.....00795

Mold Release/Conditioner™

Odorless and solvent free. Ideal for rubber, silicone and urethane molds where a mold release is required.

4 oz.....33900



EasyMold® family of products

Platinum-cure, two-part EasyMold® family of products are food grade, odorless, non-toxic, FDA compliant and high heat tolerant (up to 400°F / 204°C). EasyMold® silicone molds are ideal for a wide range of mold applications, including Castin'Craft® Clear Casting Resin, EasyCast® Clear Casting Epoxy, FastCast® Casting Urethane, wax, baking, chocolates, ice cubes, soap, plaster, air dry clay, concrete and low melt metals! Self-releasing (no mold release agent required), strong, flexible and re-usable molds produce exceptionally fine detail with no shrinkage.

NEW EasyMold® Silicone Paste

Brush-on EasyMold® Silicone Paste is non-sagging, making it ideal for a wide range of vertical and horizontal mold applications. Exceptionally fine detail with fast build up makes this product ideal for creating a mold without the use of containment walls normally associated with liquid type mold making products. Up to 15 minutes working time and fast 3-hour cure time at 70°F / 21°C. Cure rate can be adjusted by applying heat.

- 1/2 lb kit.....33800
- 1 lb kit.....33805
- 2 lb kit.....33810



EasyMold® Silicone Rubber (liquid)

EasyMold® Silicone Rubber is brushable or pourable. With 45 to 60 minutes of working time and 24 hour cure time at 70°F / 21°C. Its easy to create blanket, glove or block molds. Cure rate can be adjusted by applying heat. No vacuum equipment required.

- 1/2 lb kit.....33718
- 1 lb kit.....33720
- 2 lb kit.....33730



EasyMold® Silicone Putty

Fast and very easy to use, EasyMold® Silicone Putty is best suited for smaller projects, such as jewelry pieces, gems, buttons, etc. Three-minute working time and fast 25-minute cure time.

- 1/2 lb kit.....33700
- 1 lb kit.....33710





Castin'Craft® Jewelry Molds

Assorted popular shapes on two convenient trays made of smooth, durable, re-usable polypropylene.

- 11 shapes33610
- 8 shapes.....33620



Knob Molds

Re-useable self-releasing polypropylene molds for use with Castin'Craft® Clear Polyester Resin and EasyCast® Clear Casting Epoxy.

- Domed Round33602
- Domed Oval33603
- Octagon.....33605
- Square with border.....33606
- Octagon with border33607
- Rectangle Pulls33609

Castin'Craft® Opaque Pigments

Universal opaque pigments can be used with Castin'Craft® Clear Polyester Casting Resin and EasyCast® Clear Casting Epoxy. The pigments blend easily to create unlimited color combinations.

Carded 1 oz container with drop dispenser

- Black.....46299
- White.....46345
- Pearlescent.....46440
- Brown46353
- Yellow.....46337
- Green.....46329
- Red46302
- Blue46280



Castin'Craft® Transparent Dyes

Use with Castin'Craft® Clear Polyester Casting Resin, EnviroTex Lite®, FastCast®, Crystal Sheen® and EasyCast® Clear Casting Epoxy.

Carded 1 oz container with drop dispenser

- Blue46430
- Green46432
- Yellow.....46438
- Amber46436
- Red46428



Re-useable Poly Molds

Self-releasing polypropylene molds for use with Castin'Craft® Clear Polyester Resin and EasyCast® Clear Casting Epoxy. Use Castin'Craft® Mold Release/Conditioner™ to clean and condition molds for longer use.

- MC143834
- MC243842
- MC343850
- MC443869
- MC543877
- MC643885
- MC743893
- MC843907



Ultra-Seal™

Multi-Purpose - Sealer, Glue & Quick Decoupage

Quick, Safe, economical. Use on wood, prints, photos, styrofoam, newspaper, plastics, fabrics, silk flowers, puzzles, etc. Dries clear.

4 oz.....	00140
16 oz.....	00159
1 gallon.....	00167

Castin'Craft® Resin Spray

Versatile fast drying, clear gloss finish/sealer



Ideal for sealing paints, inks, gel markers, metallic pastes, paper, fabric, dried flowers prior to embedding in resin. Add luster and shine or fix small blemishes in cured resin pieces. Can also be used as a topcoat for polymer clay projects.

Not available for export to Canada

5.25 oz.....	00760
--------------	-------

EnviroTex® Spray Sealer/Finish

Clear, high gloss, fast drying acrylic sealer or finish

Apply EnviroTex® Spray to delicate surfaces such as dried flowers and fabrics to add a little stiffness and support before coating with EnviroTex® Lite. EnviroTex® Spray can also be used as a "bonding agent" on surfaces which are hard to bond to such as plastics, glass and metal.

NOTE: this is not EnviroTex® Lite pour on in a spray can. Not available for export to Canada

12.5 oz.....	04013
--------------	-------



Fiber-Lok® Non-Skid Rug Backing

Easy to apply natural rubber— keeps rugs from slipping!

Simply brush this non-skid coating on new or old rugs to prevent sliding and skidding, unraveling and fraying. Fiber-lok revives old rugs, helping them last years longer. Brush small X's onto the bottom of children slippers to prevent slipping on hardwood floors! Machine washable and dry-able.

16 oz.....	00876
32 oz.....	00878
1 gallon.....	00880



Accessory Items

Surface Curing Agent 2 oz (<i>not available for export to Canada</i>).....	01007
Mixing Cup Set: 6 Cups, 6 Stir Sticks, 3 Brushes.....	01013
10 oz Graduated Mixing Cups, 25.....	01031
1 oz Graduated Mixing Cups, 100.....	01030
Bulk Metal Handled Craft Brushes, 144.....	01011
Bulk Stir Sticks, 500.....	01012



Chess board, bar and table tops
coated with EnviroTex Lite®

Instructions to create projects,
such as marble table top,
included in EnviroTex Lite® kits



ENVIRONMENTAL TECHNOLOGY INC.

300 South Bay Depot Road, Fields Landing, CA 95537-0365
Toll Free 800.368.9323/707.443.9323 f. 707.443.7962 mail@eti-usa.com

www.eti-usa.com