

# F130T FLEX-SELECT® Tow Spreader

## For the Adaptable Broadcast Spreader

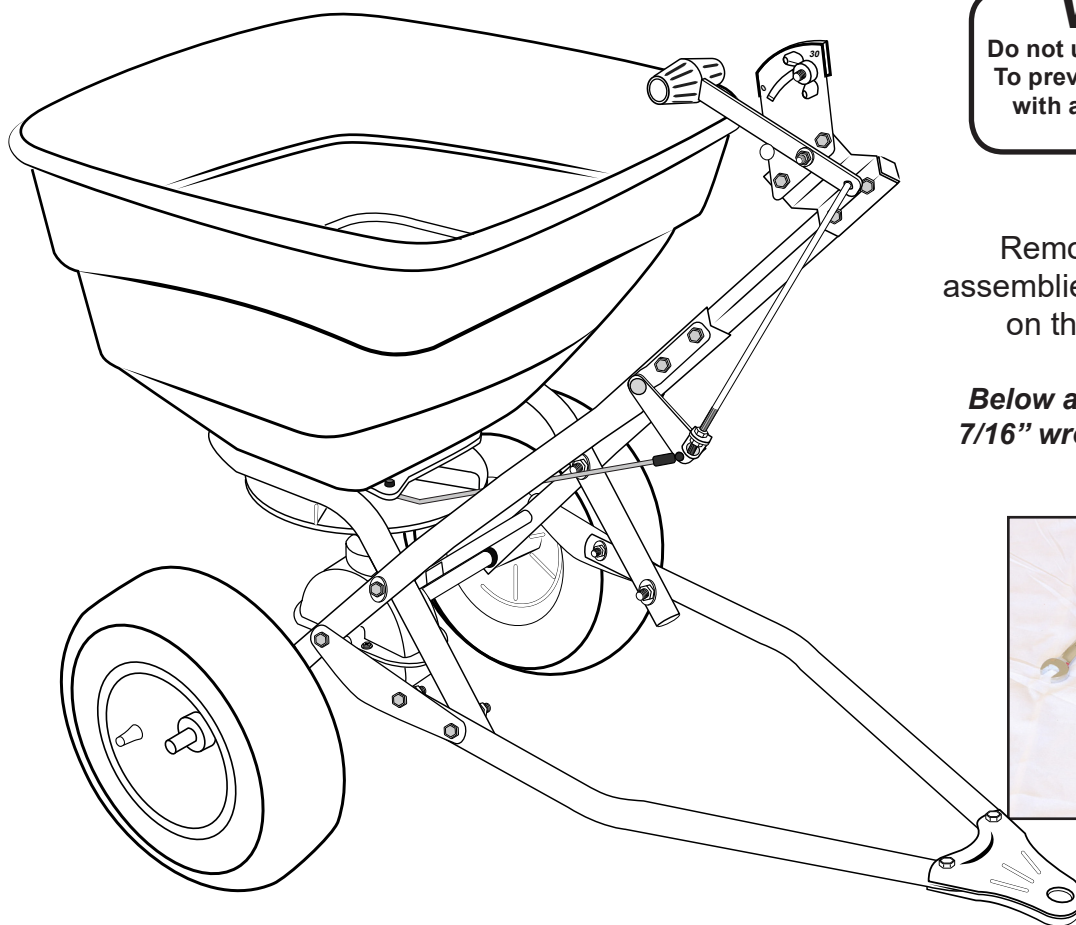
### Assembly and Operating Instructions

**EarthWay**  
EV-N-SPRED  
FLEX-SELECT

**PLEASE CONTACT US:** IF YOU ARE MISSING ANY PARTS, HAVE ANY DIFFICULTY IN ASSEMBLY, OR HAVE ANY QUESTIONS REGARDING THE SAFE OPERATION OF THIS SPREADER. THIS MODEL INCLUDES LIFETIME TECHNICAL SUPPORT. **SUPPORT HOT LINE: 574-848-7491 or 800-294-0671, email: techsupport@earthway.com**

#### HELPFUL HINTS:

- ☑ If your spreader does not spread evenly, be sure the FRONT on the gear box points toward the towing hitch. Clean the impeller after each use as some fertilizer may become stuck on the impeller blades and will cause uneven spreading.
- ☑ Your spreader is designed to be towed at three miles per hour, which is a brisk walking speed. Slower or faster speeds will change the spread patterns. Wet fertilizer will also change the spread pattern and flow rate.
- ☑ Clean and dry your spreader thoroughly after each use, wash between the shut-off plate and bottom of the hopper regularly. To prevent rust, coat all metal parts (inside and out) including the frame tubes with a light oil, silicon spray, or Fluid Film®.
- ☑ Gears are permanently lubricated at the factory. Do not open the gearbox or dirt may enter.
- ☑ When using **Rock Salt** to prevent damage to the gearbox remove salt from the hopper daily. **Rock Salt** will reconstitute back into a solid block if left in the hopper overnight and will damage your gearbox if operated with the salt in place.
- ☑ **Do not pull the spreader at speeds greater than 3 MPH or you will damage the gearbox**



#### WARNING

Do not use air tools to assemble.  
To prevent seizing coat all bolts  
with a wax or grease prior to  
installation.

Remove all parts, hardware, and assemblies from carton and lay them out on the floor to help in assembly.

**Below are tools needed for assembly:  
7/16" wrench, ratchet and 7/16" socket,  
and pliers.**



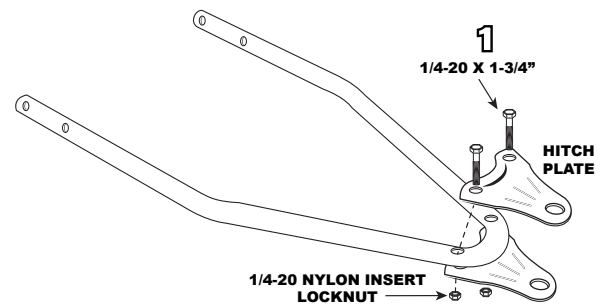
**5-24-2017 Pt# F52158**

# ASSEMBLY

## DRAWBAR ASSEMBLY:

**Step 1:** Attach the (2) HITCH PLATES using 1/4-20 x 1-3/4" Hex bolts and secure with lock nuts to the loop front of the DRAWBAR as shown in the illustration.

**Tighten these now.**

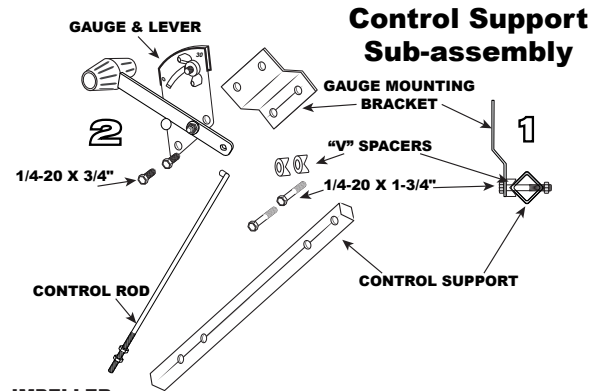


## CONTROL SUPPORT ASSEMBLY:

**Step 1:** Attach the GAUGE MOUNTING BRACKET to the CONTROL SUPPORT using (2) "V" SPACERS and (2) 1/4-20 x 1-3/4" bolts and secure with lock nuts.

**Tighten fully.**

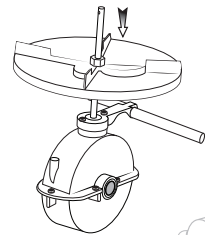
**Step 2:** Attach the GAUGE & LEVER to the GAUGE MOUNTING BRACKET using (2) 1/4-20 x 3/4" bolts and secure with lock nuts. **Tighten fully.**



## IMPELLER ASSEMBLY:

**Step 1:** Slide the IMPELLER as shown on to the pinion shaft and turn it to engage with the coin (flat spots) on the shaft and press down to seat fully.

### INSTALL IMPELLER



## GEARBOX & LOWER HANDLE ASSEMBLY:

**Step 1:** Slide the LOWER HANDLES and GEARBOX ASSEMBLY over the FRAME

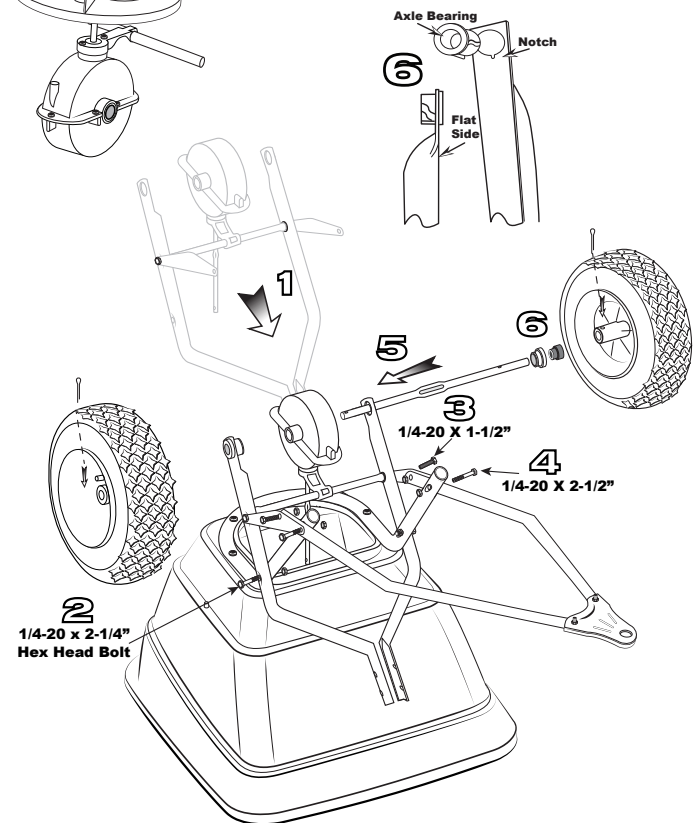
**Step 2:** Positioning the GEARBOX so that the steel rod (pinion shaft) is within the hole in the HOPPER, using (2) 1/4-20 x 2-1/4" bolts insert then into the holes in the FRAME closest to the HOPPER and secure with lock nuts. Do not tighten yet.

**Step 3:** Using (2) 1/4-20 x 1-1/2" bolts insert into the middle hole in the FRAME BRACE and through the end hole in the DRAWBAR and secure with lock nuts. Do not tighten yet.

**Step 4:** Lift the DRAWBAR up to align the holes in the FRAME BRACE and the DRAW BAR, using (2) 1/4-20 x 2-1/2" bolts insert through the holes and secure with lock nuts.

**Step 5:** Next, slide the axle as shown through the LOWER HANDLE and then the GEARBOX and then into the other LOWER HANDLE.

**Step 6:** Now install the BEARINGS over the AXLE and into the LOWER HANDLES and then insert the BUSHINGS into the BEARINGS.



**Tighten all fasteners fully now.**

## WHEEL INSTALLATION:

**Step 1:** Install the DRIVE WHEEL on to the AXLE and install the 2" COTTER PIN through the DRIVE WHEEL and AXLE and bend to keep from falling out. Now install the COAST WHEEL and insert the COTTER PIN through the AXLE only and bend to secure the COAST WHEEL to the AXLE.

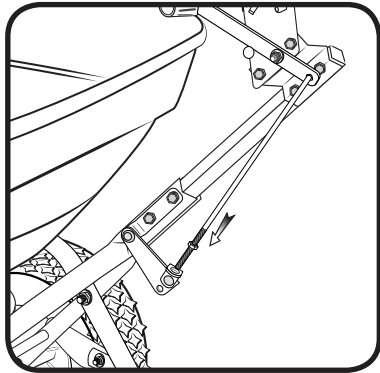
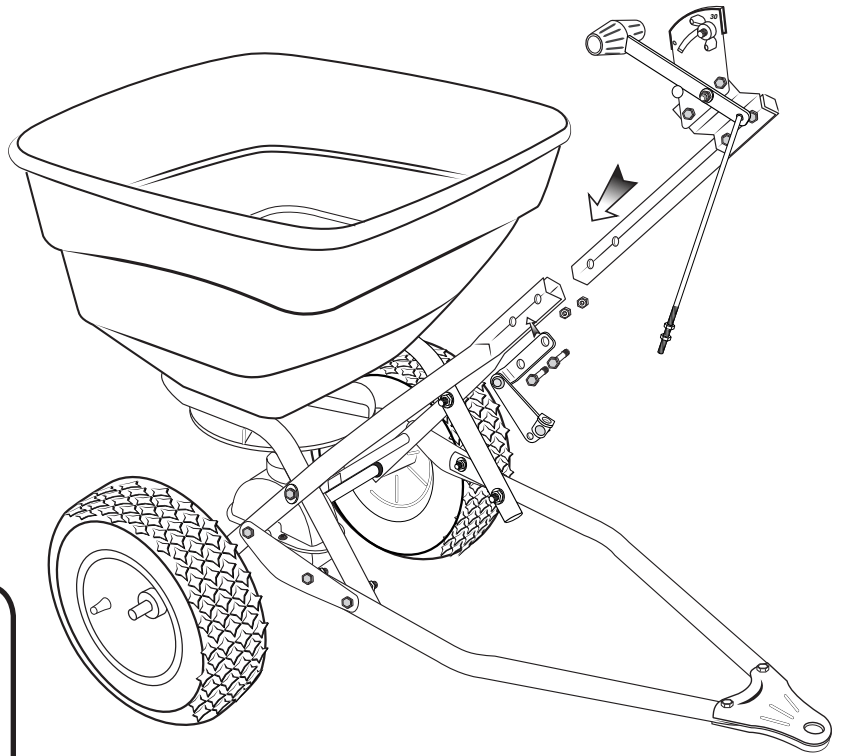
To complete the **ASSEMBLY**, rotate the spreader onto the wheels.

## **CONTROL SUPPORT INSTALLATION:**

**Step 1:** Attach the CONTROL SUPPORT by sliding it between the two LOWER HANDLES. This may be difficult so use a tool to help spread the LOWER HANDLES.

**Step 2:** Attach the PIVOT BRACKET to the LOWER HANDLES and through the CONTROL SUPPORT using (2) 1/4-20 x 2" bolts and secure with lock nuts. Tighten fully, see illustration to the right.

**Step 3:** Install the CONTROL ROD onto the LEVER as shown in the illustration to the right and then into the PIVOT CALIBRATION BRACKET

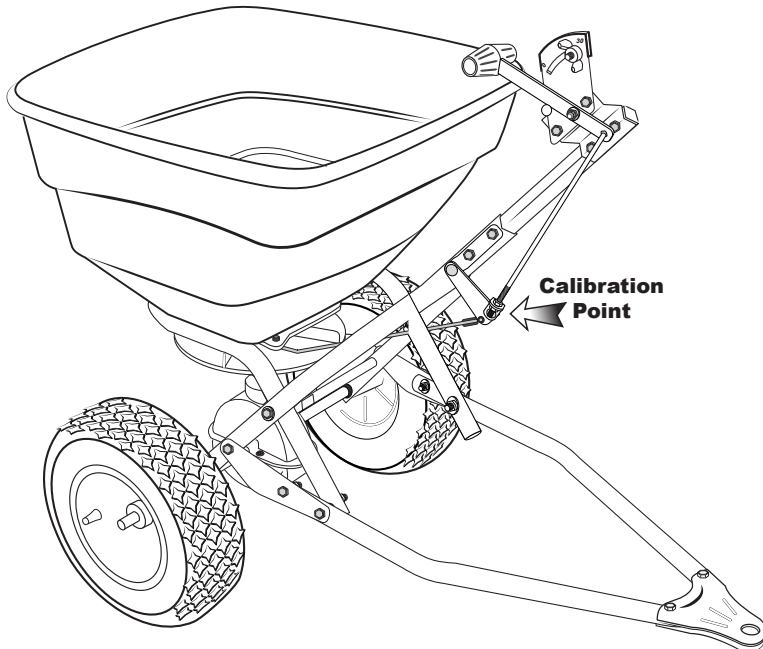
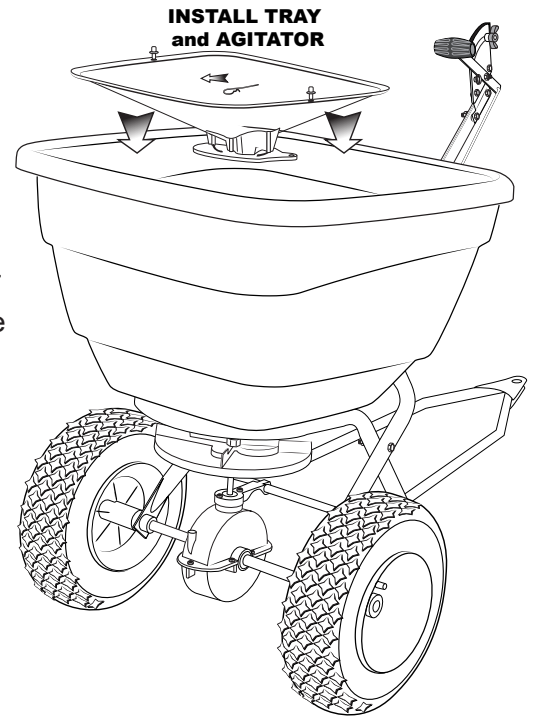


## **TRAY INSTALLATION:**

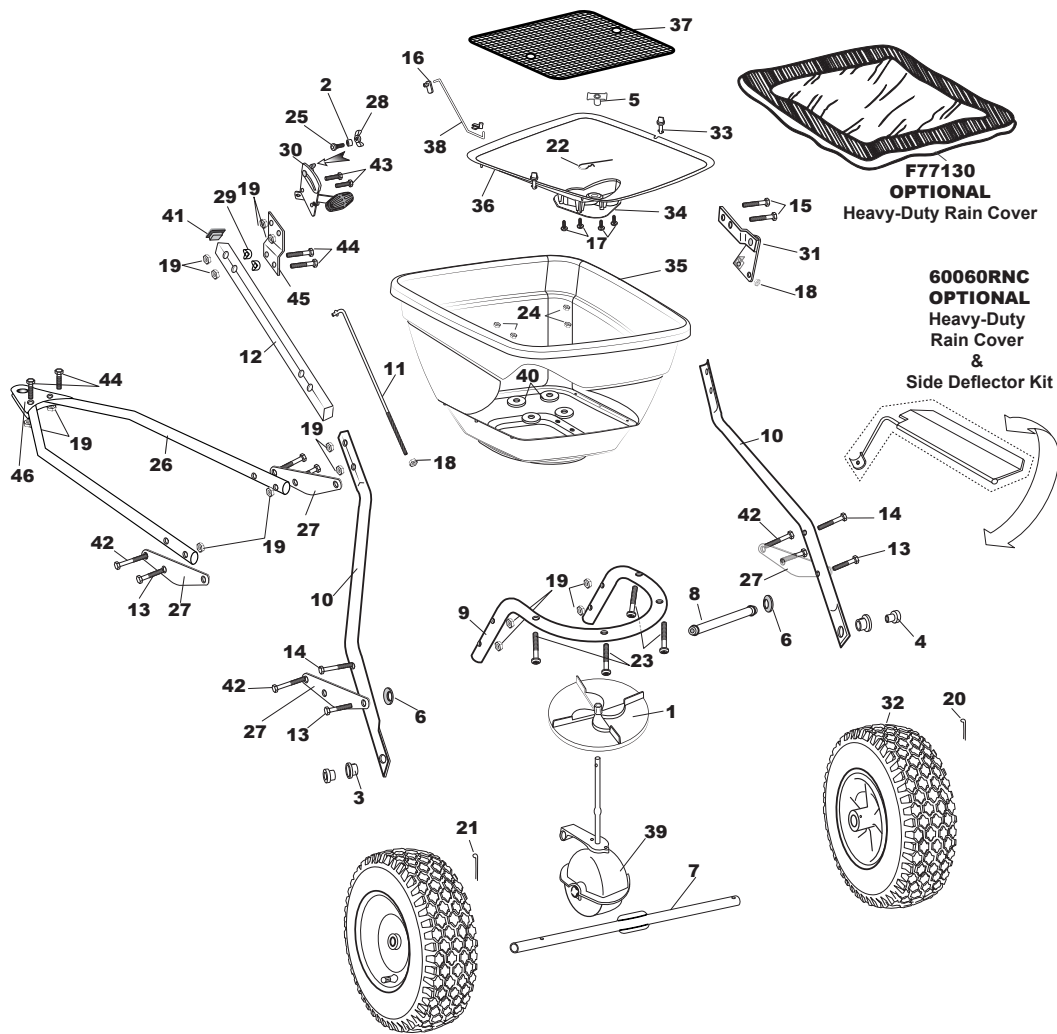
**Step 1:** Install the selected TRAY and replace the AGITATOR if required

**Step 2:** Attach the PIVOT ROD to the SHUT-OFF and then to the PIVOT

**Step 3:** Re-calibrate the spreader by adjusting the CONTROL ROD at the PIVOT until you are correctly calibrated based on the tray that is installed.

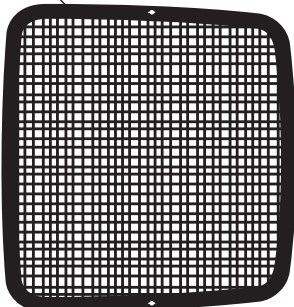


***If you have any questions regarding the assembly or use of any EarthWay product, please let us know by calling 800-294-0671, or via email: [sales@earthway.com](mailto:sales@earthway.com)***



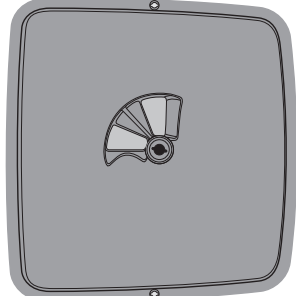
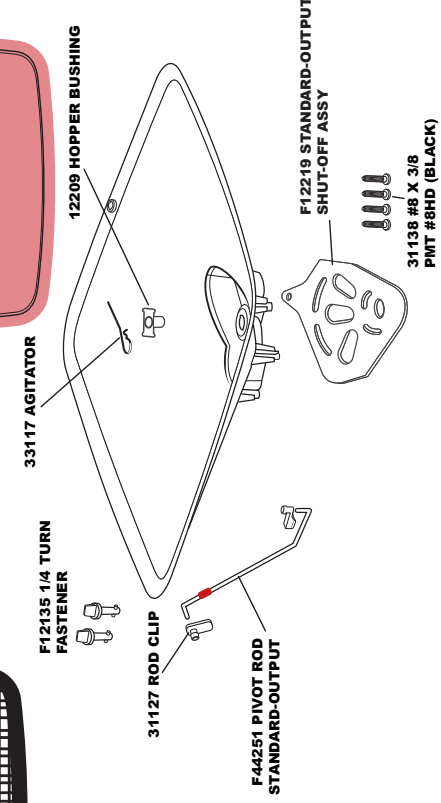
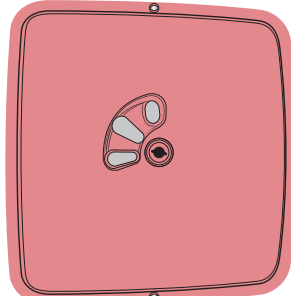
## F130T COMMERCIAL TOW BROADCAST SPREADER

Key #	Part #	Description	Key #	Part #	Description
1	12110	IMPELLER 9" ROUND DISHED	24	36300	1/4-20 NYLON INSERT LOCKNUT S.S.
2	12147	SPACER (PIVOT LINK)	25	37100	1/4-20 X 1" CARRIAGE BOLT ZINC
3	12148	AXLE BEARING (2130/2150/2170/S25)	26	F21213	DRAW BAR FLEX-SELECT
4	12152	AXLE BUSHING (2130/2150/2170/S25)	27	F44249	FRAME BRACE F-S TOW KIT (F13135) EACH
5	12209	HOPPER BUSHING (C24/C25)	28	60027	WING NUT ASSEMBLY BLACK
6	36404	1/4 CUPPED WASHER S.S.	29	F12144	V SPACER FLEX-SELECT TOW CONV KIT (F13135) EACH
7	24500	AXLE, COINED (2150, 2170, C, PUSH/TOW)	30	60298	GAUGE & LEVER ASSEMBLY (2150/C22)
8	25228	CROSS BRACE (2150/2170/S25) 11.25 REV908	31	60300	PIVOT & BRACKET ASSEMBLY (2150/2170)
9	25108	FRAME (2150T/2170T/C25/F-Series)	32	70138	PNEUMATIC DRIVE WHEEL STUD (2150/S25)
10	25222	LOWER HANDLE SQ (2150's/2170's)	33	F12135	1/4 TURN FASTENER FLEX SELECT
11	F42263	CONTROL ROD 12" TOW KIT	34	F12219	STANDARD OUTPUT FLEX-SELECT SHUTOFF
12	F25606	SQUARE CONTROL SUPPORT TUBE	35	F13106	FLEX-SELECT 130# HOPPER
13	31100	1/4-20 X 1 1/2 HHMS ZINC	36	F13130	STANDARD OUTPUT FLEX-SELECT TRAY KIT
14	31106	1/4-20 X 2 1/4" HHCS ZINC	37	F40003	SQUARE SCREEN FLEX-SELECT
15	31120	1/4-20 X 2" HHCS ZINC	38	F44251	PIVOT ROD STD OUTPUT FLEX-SELECT
16	31127	ROD CLIP (Flex-Select)	39	F60331	GEAR BOX ASSEMBLY TOW FLEX -SELECT
17	31138	#8 X 3/8" PMT #8 HD COARSE BLACK	40	43020	BACKPLATE WASHER
18	32100	1/4-20 HEX NUT ZINC	41	19105	.875" SQUARE TUBE PLUG BLACK
19	32103	1/4-20 NYLON INS LOCKNUT ZINC	42	36213	1/4-20 X 2 1/2 HHCS GRADE 2
20	33108	3/16" X 1" COTTER PIN ZINC	43	31101	1/4-20 X 3/4" HHMS ZINC
21	33109	3/16" X 2" COTTER PIN ZINC	44	31114	1/4-20 X 1 3/4" HHCS ZINC
22	33117	AGITATOR	45	F44246	GAUGE MOUNTING BRACKET
23	36214	1/4-20 X 1 1/2" PHPMS S.S.	46	F44215	HITCH PLATE F-S TOW KIT EACH

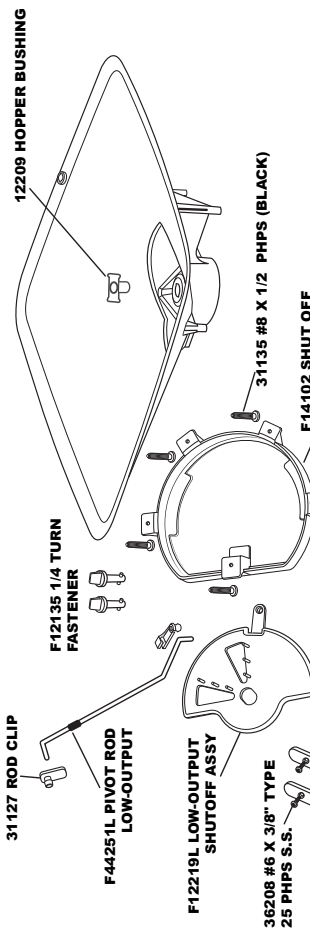


**F40003 DEBRIS SCREEN**  
Included with both  
STANDARD-OUTPUT,  
and LOW-OUTPUT  
Trays only

**STANDARD-OUTPUT  
F13130KIT**



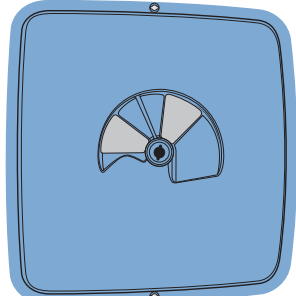
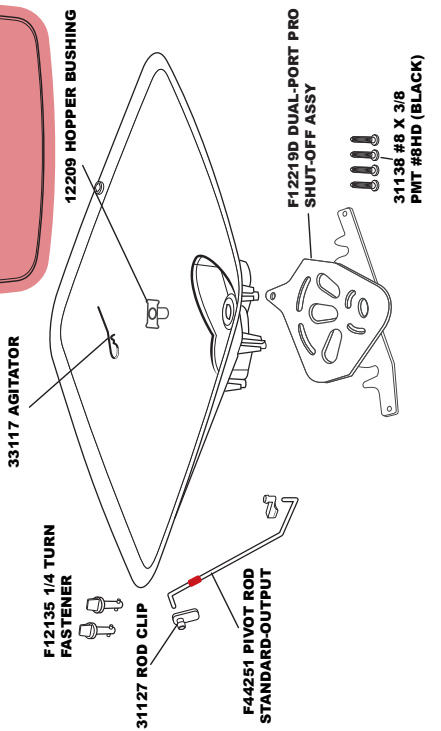
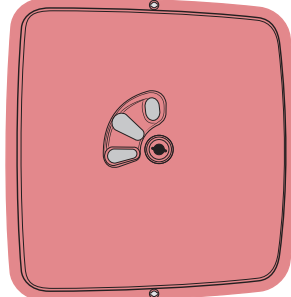
**LOW-OUTPUT  
F13130LKIT**



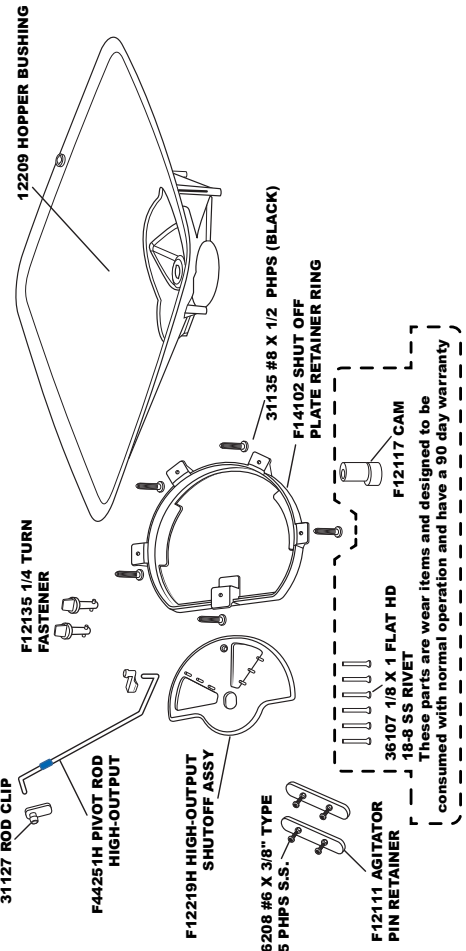
- F12111 AGITATOR
- PIN RETAINER
- 36107 1/8" X 1 FLAT HD 18-8 SS RIVET
- F12117 CAM

These parts are wear items and designed to be consumed with normal operation and have a 90 day warranty

**STANDARD-OUTPUT PRO  
F13130DKIT**



**HIGH-OUTPUT  
F13130HKIT**



- F12111 AGITATOR
- PIN RETAINER
- 36107 1/8" X 1 FLAT HD 18-8 SS RIVET
- F12117 CAM

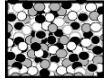
These parts are wear items and designed to be consumed with normal operation and have a 90 day warranty

## FLEX-SELECT® BROADCAST SPREADER SETTING MATRIX

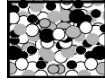
### GRANULAR MATERIAL

#### STANDARD-OUTPUT Red Tray

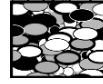
PARTICLE SIZES: Fine/Small →  
(1/16" SAND)



Medium →  
(3/32")



Large →  
(1/8") ICE MELT



LBS. PER 1,000 SQUARE FEET	SETTING	FINE/SMALL		MEDIUM		LARGE			
		WIDTH FT	METERS	WIDTH FT	METERS	WIDTH FT	METERS		
1 LB.	7	18'	5.5m	9	24'	7.3m	14	36'	11m
2 LBS.	10	18'	5.5m	13	24'	7.3m	18	36'	11m
3 LBS.	13	18'	5.5m	16	24'	7.3m	23	36'	11m
4 LBS.	14	18'	5.5m	20	24'	7.3m	27	36'	11m
5 LBS.	16	18'	5.5m	22	24'	7.3m	30	36'	11m
6 LBS.	18	18'	5.5m	25	24'	7.3m	23 = 2 pass	36'	11m
7 LBS.	20	18'	5.5m	27	24'	7.3m	25 = 2 pass	36'	11m
8 LBS.	22	18'	5.5m	28	24'	7.3m	27 = 2 pass	36'	11m
9 LBS.	24	18'	5.5m	30	24'	7.3m	28 = 2 pass	36'	11m
10 LBS.	26	18'	5.5m	22 = 2 pass	24'	7.3m	30 = 2 pass	36'	11m

### GRASS SEED

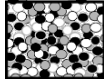
LBS. PER 1,000 SQUARE FEET	FINE		COARSE			
	SETTING	SPREAD WIDTH FT	SETTING	SPREAD WIDTH FT		
2 LBS.	14	8'	2.4m	22	14'	4.3m
3 LBS.	16	8'	2.4m	25	14'	4.3m
4 LBS.	18	8'	2.4m	28	14'	4.3m
5 LBS.	20	8'	2.4m	30	14'	4.3m

**Calibration:** Start by ensuring that your spreader calibration is correct. Make sure the drop holes in the **Standard-Output Tray** are fully open when the Rate Control handle is on #30. If not, please adjust control rod at the pivot to allow for a full open hopper holes with the handle at position at #30.

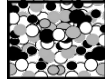
### GRANULAR MATERIAL

#### LOW-OUTPUT Black Tray

PARTICLE SIZES: Fine/Small →  
(1/16" SAND)



Medium →  
(3/32")



LBS. PER 1,000 SQUARE FEET	SETTING	FINE/SMALL		MEDIUM		
		WIDTH FT	METERS	WIDTH FT	METERS	
1 LB.	8	16'	4.9m	10	20'	6.1m
2 LBS.	10	16'	4.9m	13	20'	6.1m
3 LBS.	12	16'	4.9m	18	20'	6.1m
4 LBS.	13	16'	4.9m	20	20'	6.1m
5 LBS.	16	16'	4.9m	22	20'	6.1m
6 LBS.	18	16'	4.9m	25	20'	6.1m
7 LBS.	20	16'	4.9m	27	20'	6.1m
8 LBS.	21	16'	4.9m	29	20'	6.1m
9 LBS.	23	16'	4.9m	30	20'	6.1m
10 LBS.	24	16'	4.9m	22 = 2 pass	20'	6.1m

### GRASS SEED

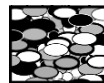
LBS. PER 1,000 SQUARE FEET.	FINE		COARSE			
	SETTING	SPREAD WIDTH FT	SETTING	SPREAD WIDTH FT		
2 LBS.	15	9'	2.7m	21	15'	4.6m
3 LBS.	18	9'	2.7m	24	15'	4.6m
4 LBS.	21	9'	2.7m	27	15'	4.6m
5 LBS.	24	9'	2.7m	30	15'	4.6m

**Calibration:** Start by ensuring that your spreader calibration is correct. Make sure the drop holes in the **LOW-OUTPUT TRAY** are fully closed when the Rate Control Handle is resting on the stop #0. If not, please adjust control rod at the pivot to ensure the shut-off is fully closed with the handle at position at #0. Move the spreader slightly to confirm the calibration because of the cam.

### GRANULAR MATERIAL

#### HIGH-OUTPUT Lt. Blue 2-hole Tray

PARTICLE SIZES: Large →  
(1/8") ICE MELT



EXTRA LARGE →  
ROCK SALT



LBS. PER 1,000 SQUARE FEET.	SETTING	LARGE		EXTRA LARGE		
		WIDTH FT	METERS	WIDTH FT	METERS	
1 LB.	7	28'	8.5m	8	26'	7.9m
2 LBS.	10	28'	8.5m	11	26'	7.9m
3 LBS.	12	28'	8.5m	13	26'	7.9m
4 LBS.	14	28'	8.5m	14	26'	7.9m
5 LBS.	15	28'	8.5m	15	26'	7.9m
6 LBS.	17	28'	8.5m	16	26'	7.9m
7 LBS.	20	28'	8.5m	17	26'	7.9m
8 LBS.	21	28'	8.5m	18	26'	7.9m
9 LBS.	23	28'	8.5m	19	26'	7.9m
10 LBS.	24	28'	8.5m	21	26'	7.9m

**Calibration:** Start by ensuring that your spreader calibration is correct. Make sure the drop holes in the **HIGH-OUTPUT TRAY** are fully closed when the Rate Control Handle is resting on the stop #0. If not, please adjust control rod at the pivot to ensure the shut-off is fully closed with the handle at position at #0. Move the spreader slightly to confirm the calibration because of the cam.

The settings furnished on the Rate Setting Matrix are intended as a guide only. Variations in physical characteristics of material applied, walking speed, and roughness of ground surface may require slightly different spreader settings. Due to the above conditions, EPI makes no warranty as to the uniformity of coverage actually obtained from the settings listed.

## **5-YEAR LIMITED WARRANTY**

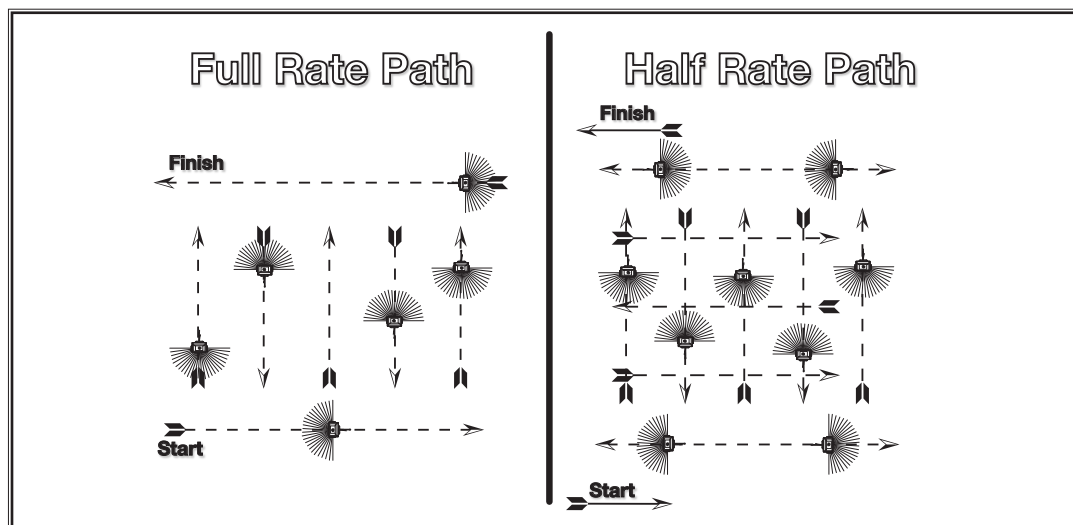
Earthway Products, Inc. warrants this product free of defects in original workmanship and materials for a period of 5-years to the end user with the original purchase receipt. If a manufacturing non-conformance is found, Earthway Products, Inc. at its discretion will repair or replace the part(s) or product at no charge provided the failure is not the result of incorrect installation, mishandling, misuse, tampering, or normal wear and tear as determined by Earthway. Earthway at its discretion may require that the part(s) or product be returned along with the original purchase receipt at owners' expense for examination and compliance with the terms of this warranty. Do not return any product without first receiving authorization from Earthway Products, Inc. To seek remedy under this warranty, contact Earthway Products, Inc. at 574-848-7491, techsupport@earthway.com or write to Earthway Products, Inc. P.O. Box 547 Bristol, Indiana 46507 and describe the nature of the manufacturing defect. **SPECIFIC LIMITATIONS:** This warranty covers only the part(s) or product; any labor charges associated with repair or replacement of non-conformances are specifically excluded. Due to the corrosive nature of most fertilizers and ice melt products, Earthway Products, Inc. makes no warranty against and specifically excludes part(s) or product degradation or failure due to corrosion or its effects, or the use of powdered materials. Clean and dry your spreader thoroughly after each use, as a preventative measure, coat all metal parts with a light oil or silicon spray.

## **OPERATING INSTRUCTIONS**

Before filling hopper, become familiar with the operation of this spreader.

- Obtain proper setting for material to be used from the enclosed SETTING MATRIX included with this spreader, or from our web site under the MANUALS SECTION.
- Move stop bolt on rate gauge assembly to the proper setting.
- While pushing spreader forward, pull control lever back to stop bolt.
- To stop, push lever forward to close flow holes before you stop moving.
- When finished, empty any remaining material from hopper.
- Thoroughly wash spreader and dry before storing. A coating of light oil will help prevent corrosion.
- If you use Rock Salt, remove agitator when in use to prevent damage to the GEARBOX.

The settings furnished on the Rate Setting Matrix are intended as a guide only. Variations in physical characteristics of material applied, walking speed, and roughness of ground surface may require slightly different spreader settings. Due to the above conditions, the manufacturer makes no warranty as to the uniformity of coverage actually obtained from the settings listed.



## **HOW TO ORDER SPARE PARTS**

All spare parts listed herein may be ordered direct from the manufacturer. Be sure to give the following information when ordering.

- Model Number
- Part Number
- Part Description

You can contact us by calling (574) 848-7491 or 800-294-0671 to place an order with a credit card, or purchase online at [www.earthway.com/parts](http://www.earthway.com/parts) Questions? Email us at [sales@earthway.com](mailto:sales@earthway.com)