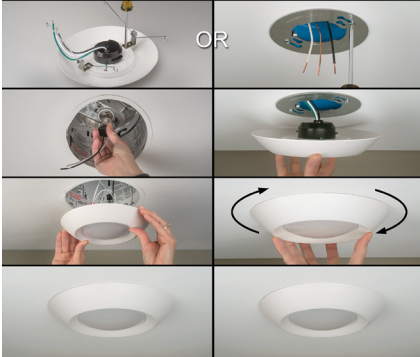


Flush Mount Disk Light

SMD6 Surface Mount Disk Light with TwistFit Mounting System

TwistFit™ Mounting System

TWO EASY INSTALLATION METHODS
RECESSED CAN JUNCTION BOX



Fits into 3-4" octagonal
j-box or into recessed can



**SMD6 Disk Ceiling Light
with Color Preference®
Model # 56578211
14w, 1000 Lumens**

ETI ADVANTAGE



COLOR PREFERENCE®

- ✓ Installs quickly into j-box or recessed can
- ✓ Innovative TwistFit mounting system makes installation easy and ensures a tight, no-gap fit against ceilings
- ✓ Optional color trim kits available: Oil rubbed bronze, brushed nickel, and black
- ✓ UL wet location rated

AVAILABLE MODELS



COLOR PREFERENCE®

3000K, 4000K, or 5000K CCT

14w 3CCT Color Preference®

Model #: 56578211

P/N: FMDL-7.5IN-1000LM-8-CP3-SV-TD

14w, 1000 Lumens, 120V, Replaces 100w

20w 3CCT Color Preference®

Model #: 56578311

P/N: FMDL-7.5IN-1500LM-8-CP3-SV-TD

20w, 1500 Lumens, 120V, Replaces 150w

Single Color 3000K

14w 3000K CCT

Model #: 56578111

P/N: FMDL-7.5IN-1000LM-8-30K-SV-TD

14w, 1000 Lumens, 120V, Replaces 100w

20w 3000K CCT

Model #: 56578411

P/N: FMDL-7.5IN-1500LM-8-30K-SV-TD

20w, 1500 Lumens, 120V, Replaces 150w

Flush Mount Disk Light

Project:
Part Number:

PART NUMBER GUIDE

CATEGORY	SIZE	LUMENS	CRI	CCT	VOLTAGE	DIMMING
FMDL	7.5IN		8		SV	TD

PRODUCT/SKU DETAILS

GENERAL SPECIFICATIONS:

Voltage	120VAC	Frequency	60 Hz.	CRI	80
Power Factor	>.90	THD	< 20%	Rating	cULus Wet
Temperature	-4°F to +113°F	Rated Life	50,000 hrs.	Warranty	5 Year Limited

ORDERING GUIDE

Part #	Order #	Category	Dimming	LED Watts	Lumens	Pallet QTY	CCT	Product Dimensions	CRI	Input Voltage	Case Pack
FMDL-7.5IN-1000LM-8-CP3-SV-TD	56578211	14w SMD6 Surface Mount Disk Light with TwistFit mounting system, 3 CCT Color Preference®	TRIAC Dim	14w	1,000	600	3000K/ 4000K/5000K	2.1 x 7.5 in.	80	120V	6
FMDL-7.5IN-1500LM-8-CP3-SV-TD	56578311	20w SMD6 Surface Mount Disk Light with TwistFit mounting system, 3 CCT Color Preference®	TRIAC Dim	20w	1,500	600	3000K/ 4000K/5000K	2.1 x 7.5 in.	80	120V	6
FMDL-7.5IN-1000LM-8-30K-SV-TD	56578111	14w SMD6 Surface Mount Disk Light with TwistFit mounting system, 3000K	TRIAC Dim	14w	1,000	600	3000K	2.1 x 7.5 in.	80	120V	6
FMDL-7.5IN-1500LM-8-30K-SV-TD	56578411	20w SMD6 Surface Mount Disk Light with TwistFit mounting system, 3000K	TRIAC Dim	20w	1,500	600	3000K	2.1 x 7.5 in.	80	120V	6
FMDL-TRIM-B	90600754	Trim Black - Compatible with 56578411, 56578211, 56578311, 56578111	N/A	N/A	N/A	2,400	N/A	1.3 x 7.5 in.	N/A	N/A	24
FMDL-TRIM-BZ	90600755	Trim Oil Rubbed Bronze - Compatible with 56578101, 56578211, 56578311, 56578401	N/A	N/A	N/A	2,400	N/A	1.3 x 7.5 in.	N/A	N/A	24
FMDL-TRIM-BN	90600756	Trim Brushed Nickel - Compatible with 56578101, 56578211, 56578311, 56578401	N/A	N/A	N/A	2,400	N/A	1.3 x 7.5 in.	N/A	N/A	24

PACKAGING SPECIFICATIONS

Part #	Order #	UPC	UCC	Product Carton Dimensions	Product Carton Weight	Shipper/Master Carton Dimensions	Shipper/Master Carton Weight	40HQ (PCS)
FMDL-7.5IN-1000LM-8-CP3-SV-TD	56578211	849489064109	50849489064104	7.9 x 2.6 x 7.9 in.	0.9 lbs.	16.5 x 8.4 x 8.7 in.	6.9 lbs.	20160
FMDL-7.5IN-1500LM-8-CP3-SV-TD	56578311	849489064116	50849489064111	7.9 x 2.6 x 7.9 in.	0.9 lbs.	16.5 x 8.4 x 8.7 in.	6.9 lbs.	20160
FMDL-7.5IN-1000LM-8-30K-SV-TD	56578111	849489064437	50849489064432	7.9 x 2.6 x 7.9 in.	0.9 lbs.	16.5 x 8.4 x 8.7 in.	6.9 lbs.	20160
FMDL-7.5IN-1500LM-8-30K-SV-TD	56578411	849489064444	50849489064449	7.9 x 2.6 x 7.9 in.	0.9 lbs.	16.5 x 8.4 x 8.7 in.	6.9 lbs.	20160
FMDL-TRIM-B	90600754	849489064130	50849489064135	N/A	TBD	19.4 x 17 x 9.1 in.	TBD	33984
FMDL-TRIM-BZ	90600755	849489064147	50849489064142	N/A	TBD	19.4 x 17 x 9.1 in.	TBD	33984
FMDL-TRIM-BN	90600756	849489064154	50849489064159	N/A	TBD	19.4 x 17 x 9.1 in.	TBD	33984