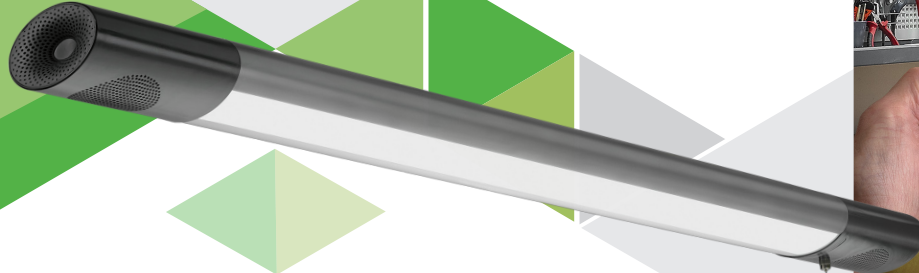


BLUETOOTH SHOP LIGHT

MODEL#55703142 | 3,713 LUMENS | 50W | 94LPW | 4000K



# BLUETOOTH SHOP LIGHT SUPERIOR VALUE & PERFORMANCE



## PRODUCT OVERVIEW

ETI SSL's Bluetooth Shop Light is an easy and innovative way to use a high output light source and to play ambient music on the same fixture. It will wirelessly connect to your smartphone to play your music or podcasts and still provide crystal clear light output. Replace your fluorescent shop lights with this innovative design so that you can listen to your favorite music or podcast wirelessly in your workshop. The integrated speakers deliver optimal acoustic performance and design.

The Bluetooth Shop Light can activate audio from up to 33 ft. away. Enable Bluetooth on your smart device using the downloadable app which has the capability to pair with both Android and iOS devices. If you would like to use just the light, there is a pull-chain for ease of use. This shop light with built-in Bluetooth speakers is both lightweight and provides long-lasting maintenance free operation thanks to its reported 88.3% lumen maintenance at 60,000 hours and projected L70 at 169,000 hours. Ideal for use in a work shop, garage, basement, shed, small warehouse or entertainment room.

Our entire team takes great pride in our dedication to providing innovative in-stock lighting solutions that typically ship in 2-3 days with the product reliability and quality that you can always depend on from ETI SSL.

## STOCK ORDERING INFORMATION (typical 2-3 day shipment lead time)<sup>1</sup>

Catalog Logic/PT#	Model #	UPC	Size	Lumens	Wattage <sup>2</sup>	LPW	CCT	CRI	Voltage	Dimming
SH-42IN-3600LM-8-40K-SV-BT	55703142	849489065267	42"	3713	50	94	4000K	80 (min)	120V	Non-Dim

Notes:  
1. Stock SKUs typically ship in 24-48 hours upon receipt of an approved released order.  
2. Total System Wattage is 50W (40W Light + 10W Speaker).

# SH Series

Bluetooth Shop Light

Model#55703142 | 3,713 Lumens | 50W | 94LPW | 4000K

## CATALOG LOGIC | PART# DECODER<sup>1,2,3</sup>

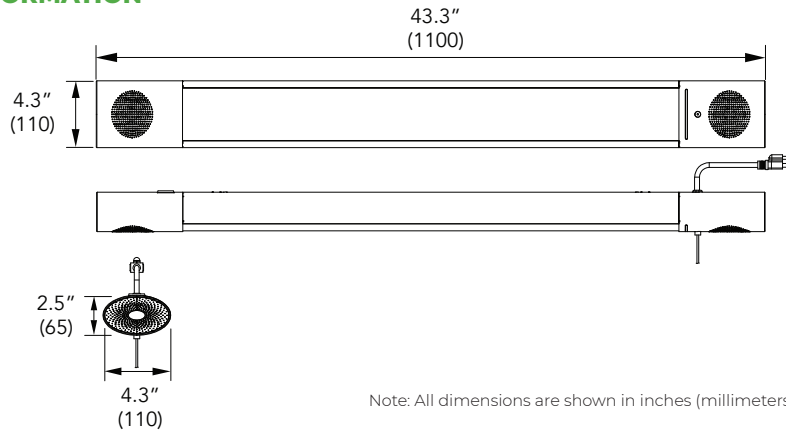
### SH-42IN-3600LM-8-40K-SV-BT (Model # 55703142)



**Notes:**

- 1. This product is not configurable, only designated 'Stock' SKUs are available.
- 2. Decoder is to help clarify Catalog Logic|Part # configurations only (see Stock & Rapid Ship Ordering Information for available SKUs).
- 3. Lumen values shown are nominal (see Stock Ordering Information or Photometric Details sections for additional performance details).

## KEY DIMENSIONAL INFORMATION



Note: All dimensions are shown in inches (millimeters).

## MISCELLANEOUS PRODUCT SPECS & DETAILS

### Load Information

Power Factor	> 0.90
THD	< 20%
Frequency	50/60 Hz
Sound Rating	< 20 dBA
Low Temp Start	-20° C (-4° F)
Max Temp	45° C (113° F)
Unit Weight	3.66 lbs

### Lumen Maintenance

Ambient Temperature	TM-21 Lumen Maintenance (60,000 hours)
25° C (77° F)	> 88.3%
Ambient Temperature	TM-21 Theoretical L70 (hours)
25° C (77° F)	169,000

### Shipping Information\*

Size	Unit Weight <sup>1</sup>	Pallet <sup>2</sup>
42" unit	4.85 lbs	84 units per

- 1. Case pack weighs 11.2 lbs (2 units / per case pack).
- 2. There are 42 case packs per pallet.

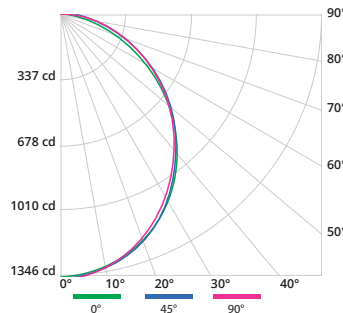
## PHOTOMETRIC DETAILS

### Luminaire Data: SH-42IN-3600LM-8-40K-SV-BT

IES File Name	55703142.IES
CCT & CRI	4000K, 80CRI minimum
Initial Delivered Lumens	3,713
Wattage	39.46W
Efficacy	94
Beam Angle	50% = 103.9° 10% = 168°
Spacing	0° = 1.24 90° = 1.20

Photometric values based on tests performed in compliance with LM-63 & LM-79

### Indoor Candela Plot



ETI Solid State Lighting  
720 Northgate Parkway, Wheeling, IL 60090

1.855.384.7754 | www.ETISSL.com | etiorders@ETISSL.com

All specifications are subject to change without notice. All reported values are nominal or typical values, measured under laboratory conditions @ 25° C (77° F). Actual performance can vary slightly as a result of end-user application & environment.