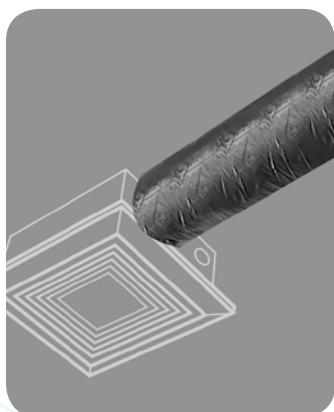


# Flexible Insulated Ducting

BPC SERIES - BLACK JACKET



- UL 181 listed as a class 1 air duct
- UV inhibited black polyethylene jacket is fire resistant
- Formaldehyde free, energy efficient fibreglass insulation
- Inner core constructed with corrosion resistant, galvanized wire
- Can be installed in place of galvanized pipe
- Glass fiber insulation reduces heat loss and condensation

**R-4.2**

Product Code	UPC Code 060672	Size	Packaging	Pack Qty.	Pack Wt. (lbs)	Pack Cube (cu. ft.)
BPC325	287000	3" x 25'	Standard Carton	1	6	1.40
BPC425	287130	4" x 25'	Standard Carton	1	6	1.40
BPC525	287116	5" x 25'	Standard Carton	1	7	1.40
BPC625	287017	6" x 25'	Standard Carton	1	7	1.40
BPC725	287024	7" x 25'	Standard Carton	1	8	2.10
BPC825	287123	8" x 25'	Standard Carton	1	9	2.10
BPC925	287109	9" x 25'	Standard Carton	1	10	2.93
BPC1025	287031	10" x 25'	Standard Carton	1	11	2.93
BPC1225	287048	12" x 25'	Standard Carton	1	13	3.91
BPC1425	287055	14" x 25'	Standard Carton	1	17	6.26
BPC1625	287062	16" x 25'	Standard Carton	1	20	6.26
BPC1825	287079	18" x 25'	Standard Carton	1	22	9.18
BPC2025	287086	20" x 25'	Standard Carton	1	24	9.18

**R-6.0**

Product Code	UPC Code 060672	Size	Packaging	Pack Qty.	Pack Wt. (lbs)	Pack Cube (cu. ft.)
BPC425R6	606016	4" x 25'	Standard Carton	1	9	1.98
BPC525R6	606023	5" x 25'	Standard Carton	1	11	1.98
BPC625R6	606030	6" x 25'	Standard Carton	1	11	1.98
BPC725R6	606047	7" x 25'	Standard Carton	1	12	1.98
BPC825R6	606054	8" x 25'	Standard Carton	1	14	2.80
BPC925R6	606122	9" x 25'	Standard Carton	1	16	2.80
BPC1025R6	606061	10" x 25'	Standard Carton	1	17	3.77
BPC1225R6	606078	12" x 25'	Standard Carton	1	20	3.77
BPC1425R6	606085	14" x 25'	Standard Carton	1	26	4.88
BPC1625R6	606092	16" x 25'	Standard Carton	1	31	7.54
BPC1825R6	606108	18" x 25'	Standard Carton	1	34	7.54
BPC2025R6	606115	20" x 25'	Standard Carton	1	37	10.77

R-8.0

Product Code	UPC Code 060672	Size	Packaging	Pack Qty.	Pack Wt. (lbs)	Pack Cube (cu. ft.)
BPC425R8	700011	4" x 25'	Standard Carton	1	10	2.67
BPC525R8	700028	5" x 25'	Standard Carton	1	11	2.67
BPC625R8	700035	6" x 25'	Standard Carton	1	12	2.67
BPC725R8	700042	7" x 25'	Standard Carton	1	14	3.63
BPC825R8	700059	8" x 25'	Standard Carton	1	15	3.63
BPC925R8	700066	9" x 25'	Standard Carton	1	16	4.74
BPC1025R8	700073	10" x 25'	Standard Carton	1	19	4.74
BPC1225R8	700080	12" x 25'	Standard Carton	1	21	6.00
BPC1425R8	700097	14" x 25'	Standard Carton	1	24	8.96
BPC1625R8	700103	16" x 25'	Standard Carton	1	26	8.96
BPC1825R8	700110	18" x 25'	Standard Carton	1	29	12.52

**Code Compliance:**

Dundas Jafine recommends that you check with the local code body, having jurisdiction in your area, to determine applicable codes and R-value requirements. UL 181, NFPA 90A & 90B, BOCA, ICBO, SBCC, HUD/FHA MIN. Property STD.

**Core Material:** Double wall, 2 ply lamination of high density black polyester film

**Steel Wire:** Corrosion resistant, zinc coated wire

**Glass Fiber Insulation:** Glass fiber insulating blanket in various R-values

**Vapor Barrier:** Heavy duty, tear resistant silver jacket with reinforced scrim

**Flame Spread:** Less than 25

**Smoke Developed:** Less than 50

**Vapor Barrier Permeability:** 0.17 Perms

**Temperature Range:** -20°F to 250°F

**Max. Rated Velocity:** 5000 FPM

**Max. Rated Positive Pressure:** 10 in. WC

**Max Rated Negative Pressure:** 1/2 in. wc.