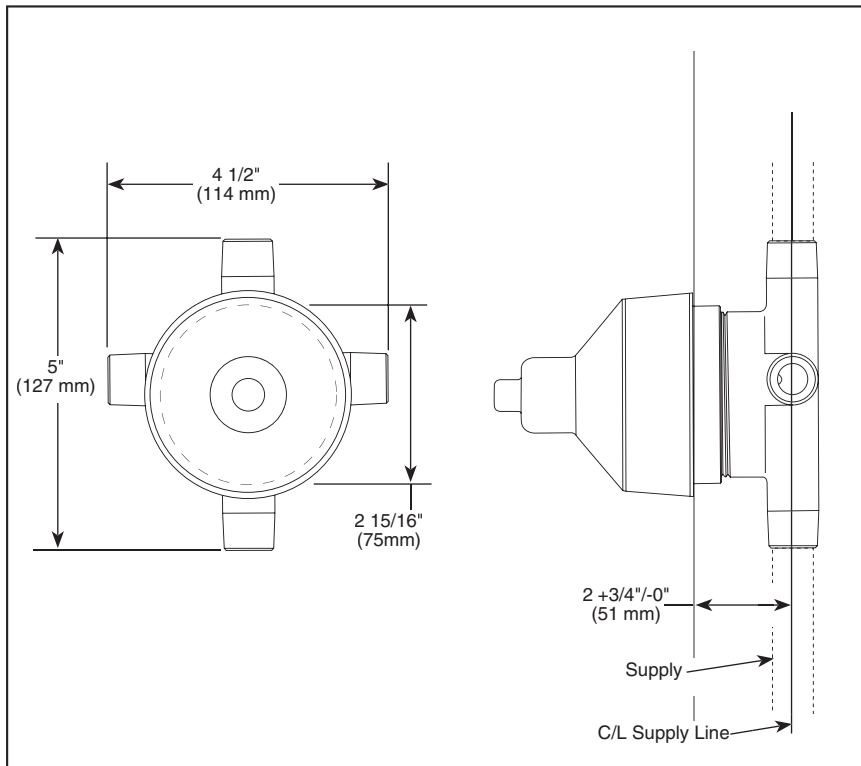


Submitted Model No.: _____

Specific Features: _____



ROUGH VALVE BODY

- R11600 (Case Qty. 3)
- Three Port Six Function Diverter Rough
- 1/2" Rough-In

STANDARD SPECIFICATIONS

- Three port six function diverter.
- 3 individual positions, 3 shared positions.
- 1/2" rough-in.
- Forged brass body.

WARRANTY

- Lifetime Faucet and Finish Limited Warranty to the original consumer purchaser to be free from defects in material and workmanship.
- 5 Year Limited Warranty for usage in all industrial, commercial and business applications.



COMPLIES WITH:

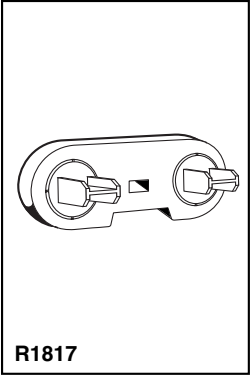
- ASME A112.18.1 / CSA B125.1
- IAPMO Listed
- CSA Certified

Delta reserves the right (1) to make changes in specifications and materials, and (2) to change or discontinue models, both without notice or obligation. Dimensions are for reference only. See current full-line price book or www.specselect.com for finish options and product availability.

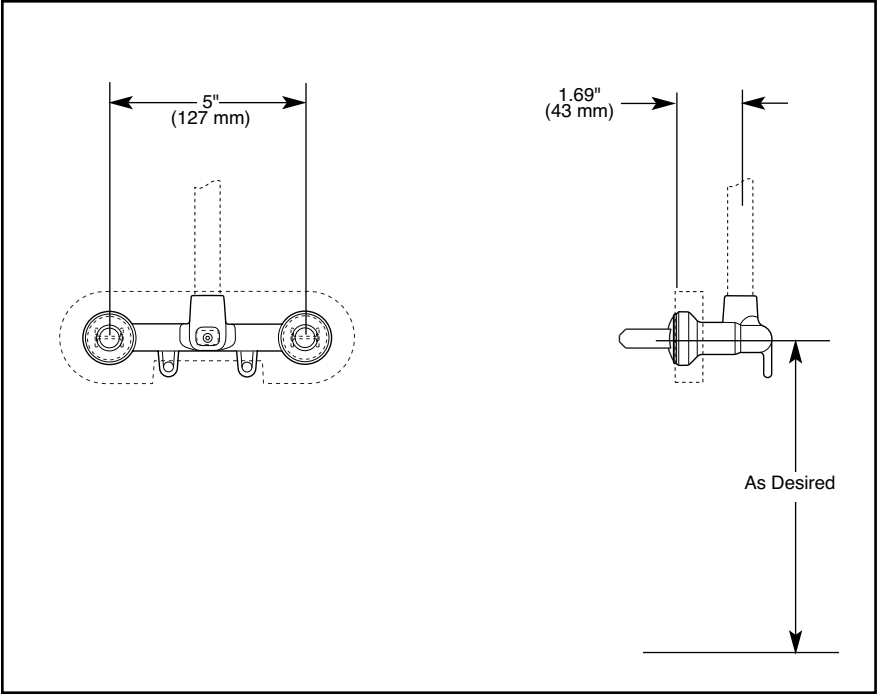
DSP-B-R11600 Rev. A



55 E. 111th Street, Indianapolis, Indiana 46280
395 Matheson Blvd. E., Mississauga, ON L4Z 2H2
© 2007 Masco Corporation of Indiana



Submitted Model No.: _____
 Specific Features: _____



JETTED SHOWER XO™ ROUGH JET MODULE

■ Jet Module Rough Only (R1817)

STANDARD SPECIFICATIONS:

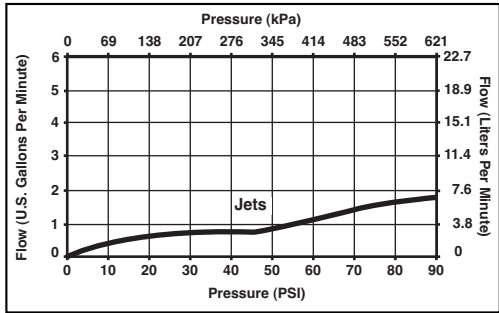
- Requires 1 1/2" (38 mm) wall cavity.
- Solid brass body.
- Back-to-back installation capability.
- Adjusts for up to 1 1/4" (32 mm) wall thickness.
- The orientation of the inlet is not important.
- Additional outlet option for jetted shower XO™ series.

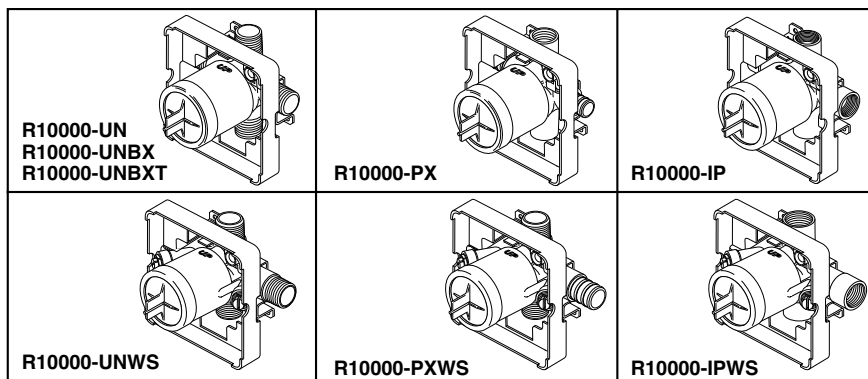
WARRANTY

- Lifetime Faucet and Finish Limited Warranty to the original consumer purchaser to be free from defects in material and workmanship.
- 5 Year Limited Warranty for usage in all industrial, commercial and business applications.

COMPLETE VALVE COMPLIES WITH:

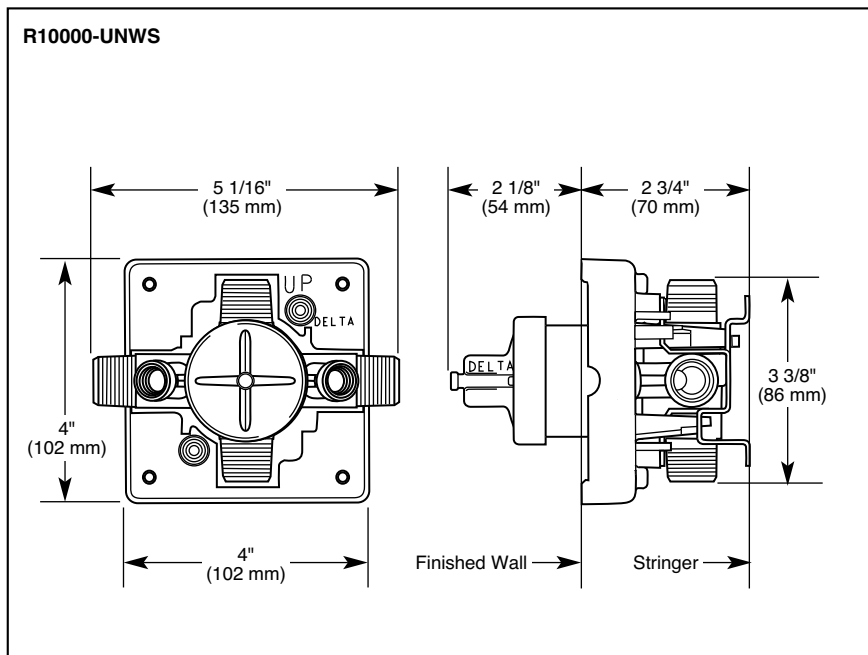
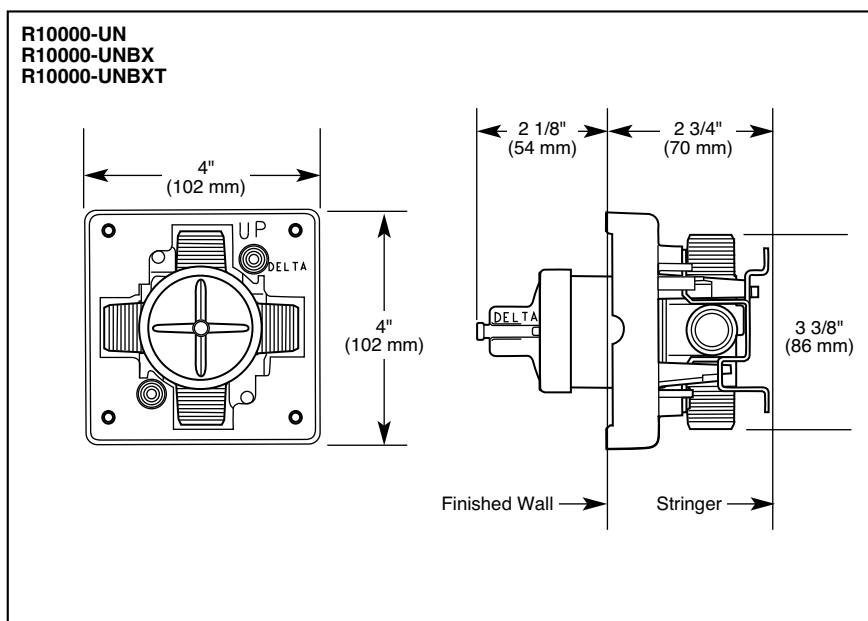
- ASME A112.18.1 / CSA B125.1





Submitted Model No.: _____

Specific Features: _____



DELTA[®]

MULTICHOICE[™] UNIVERSAL ROUGH VALVE BODY

- R10000-UN (Case Qty 12)
- R10000-UNBX (Case Qty 3)
- R10000-UNBXT (Case Qty 3)
- R10000-UNWS (Case Qty 12)
- R10000-PX (Case Qty 12)
- R10000-PXWS (Case Qty 12)
- R10000-IP (Case Qty 12)
- R10000-IPWS (Case Qty 12)

STANDARD SPECIFICATIONS:

- Forged brass body.
- Back-to-Back installation capabilities.
- Can be tested with air (200 PSI) or water (300 PSI) without valve using supplied test cap.
- Square plasterguard allows for right angle cuts.
- Thin wall mounting.
- For use with Multi Choice[™] Universal single or dual function trim. Cartridge ships with trim.

WARRANTY

- Lifetime Faucet and Finish Limited Warranty to the original consumer purchaser to be free from defects in material and workmanship.
- 5 Year Limited Warranty for usage in all industrial, commercial and business applications.

COMPLETE VALVE COMPLIES WITH:

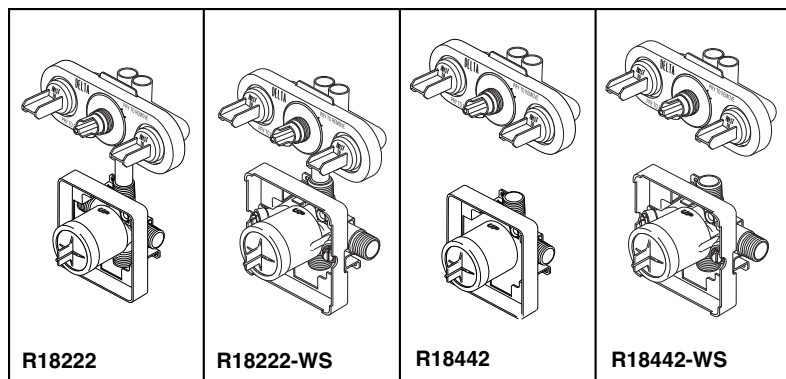
- ASME A112.18.1 / CSA B125.1



Delta reserves the right (1) to make changes in specifications and materials, and (2) to change or discontinue models, both without notice or obligation. Dimensions are for reference only. See current full-line price book or www.specselect.com for finish options and product availability.

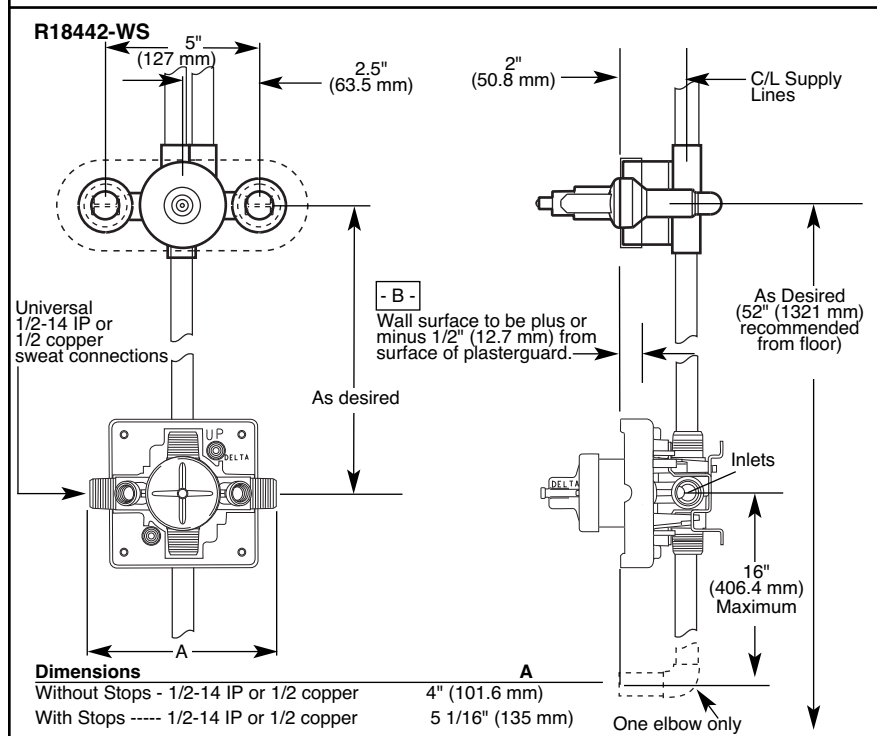
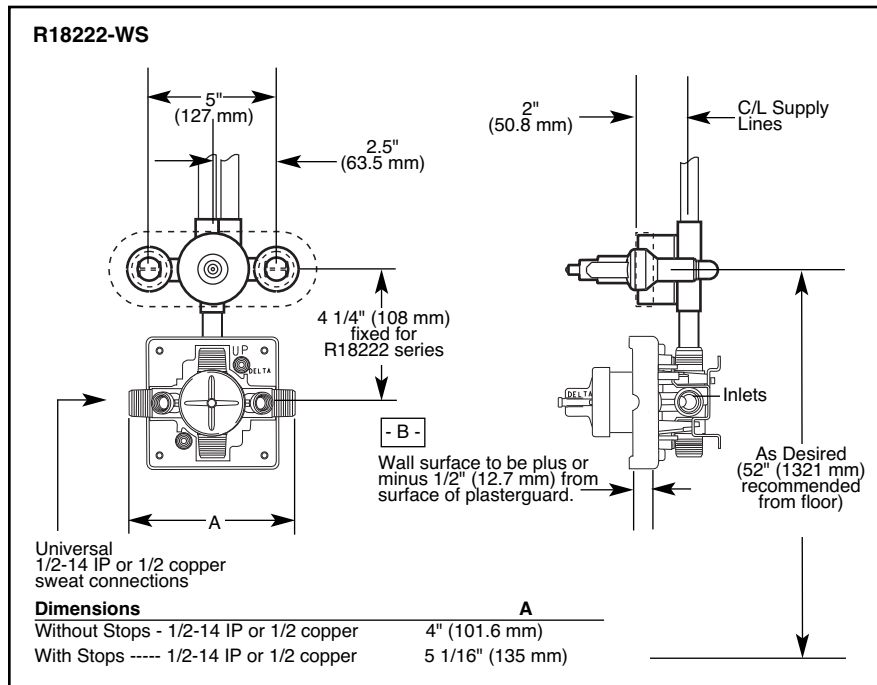
DSP-B-R10000 Rev. D

55 E. 111th Street, Indianapolis, Indiana 46280
395 Matheson Blvd. E., Mississauga, ON L4Z 2H2
© 2007 Masco Corporation of Indiana



Submitted Model No.: _____

Specific Features: _____



Delta reserves the right (1) to make changes in specifications and materials, and (2) to change or discontinue models, both without notice or obligation. Dimensions are for reference only. See current full-line price book or www.specselect.com for finish options and product availability.

2.D.4

DELTA

JETTED SHOWER XO™ ROUGH VALVE BODY

- Shower Only (R18222)
- Tub/Shower (R18442)

STANDARD SPECIFICATIONS:

- Forged brass body.
- Back-to-back installation capability.
- Can be tested with air (200 psi) or water (300 psi) without cartridge using supplied test cap.
- Adjusts for up to 1" wall thickness.
- Includes 3 port, six position diverter.
- XO = Extra outlet
- R18222 includes prefabricated valve and jet module.
- R18442 includes separately plumbed valve and jet module.
- For use with Multi Choice Universal 18 Series and 18T Series Jetted Shower™ trim. Monitor® 17 Series dual function pressure balanced cartridge ships with 18 Series trim. 17T Series dual function thermostatic cartridge ships with 18T Series trim.

WARRANTY

- Lifetime Faucet and Finish Limited Warranty to the original consumer purchaser to be free from defects in material and workmanship.
- 5 Year Limited Warranty for usage in all industrial, commercial and business applications.

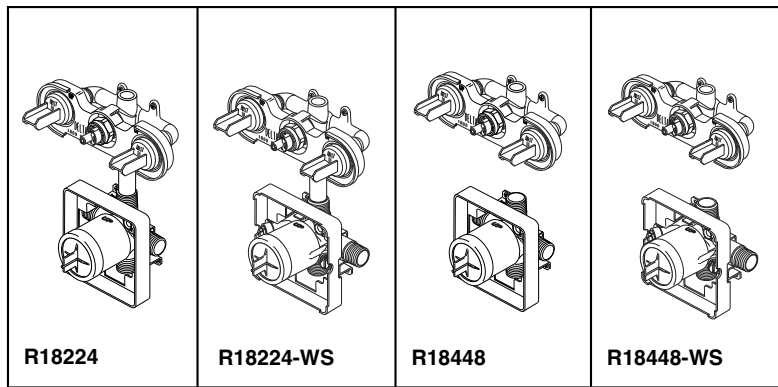
COMPLETE VALVE COMPLIES WITH:

- ASME A112.18.1 / CSA B125.1
- CSA Certified
- IAPMO Listed



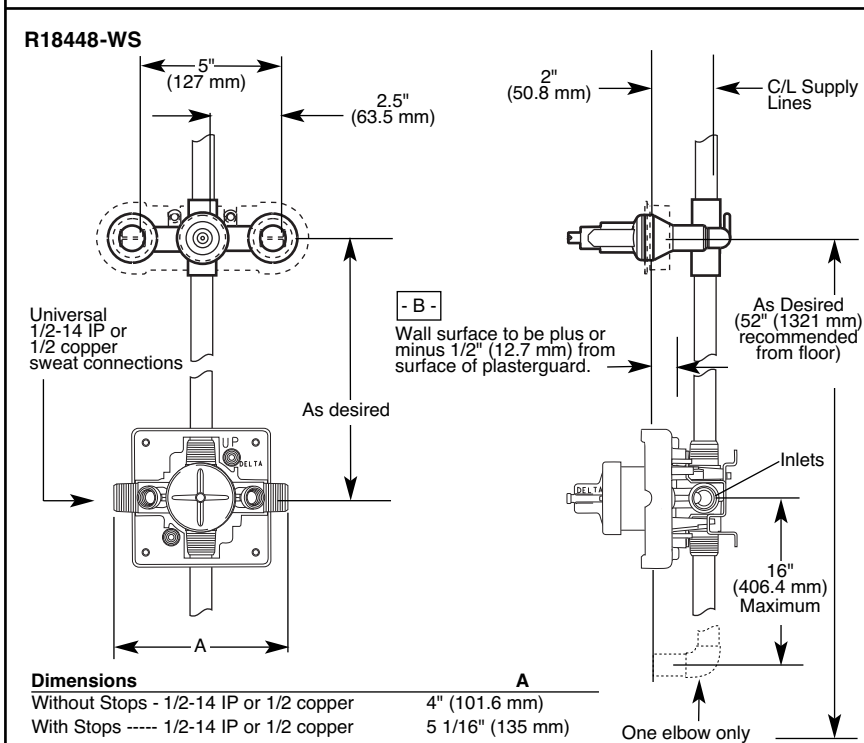
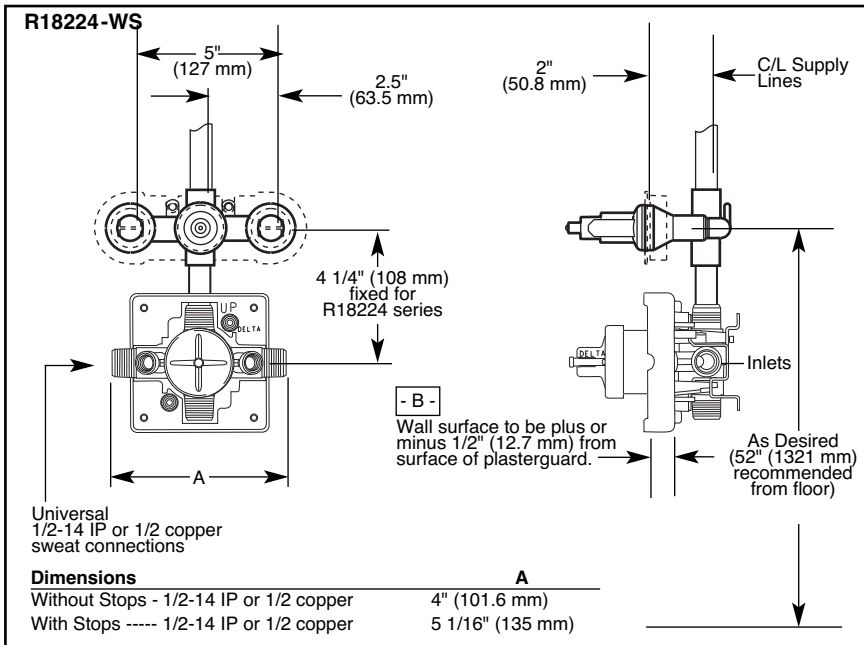
55 E. 111th Street, Indianapolis, Indiana 46280
395 Matheson Blvd. E., Mississauga, ON L4Z 2H2
© 2007 Masco Corporation of Indiana

DSP-B-R18222 Rev. A



Submitted Model No.: _____

Specific Features: _____



JETTED SHOWER™ ROUGH VALVE BODY

- Shower Only (R18224)
- Tub/Shower (R18448)

STANDARD SPECIFICATIONS:

- Forged brass body.
- Back-to-back installation capability.
- Can be tested with air (200 psi) or water (300 psi) without cartridge using supplied test cap.
- Adjusts for up to 1" wall thickness.
- Includes 3 port, six position diverter.
- R18224 includes prefabricated valve and jet module.
- R18448 includes separately plumbed valve and jet module.
- For use with Multi Choice Universal 18 Series and 18T Series Jetted Shower™ trim. Monitor® 17 Series dual function pressure balanced cartridge ships with 18 Series trim. 17T Series dual function thermostatic cartridge ships with 18T Series trim.

WARRANTY

- Lifetime Faucet and Finish Limited Warranty to the original consumer purchaser to be free from defects in material and workmanship.
- 5 Year Limited Warranty for usage in all industrial, commercial and business applications.

COMPLETE VALVE COMPLIES WITH:

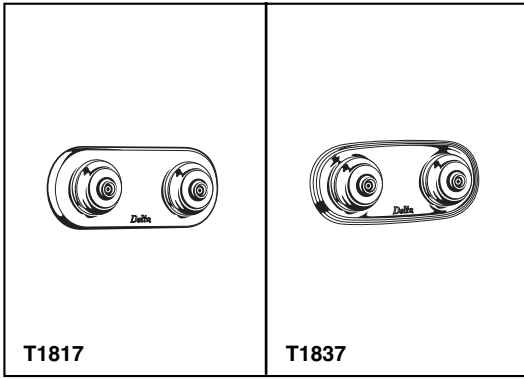
- ASME A112.18.1 / CSA B125.1
- CSA Certified
- IAPMO Listed



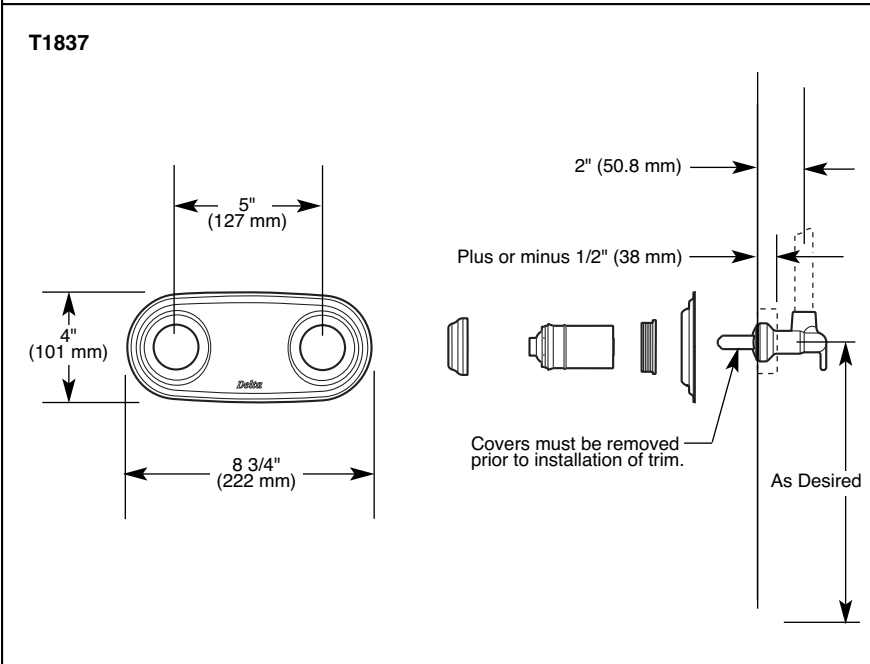
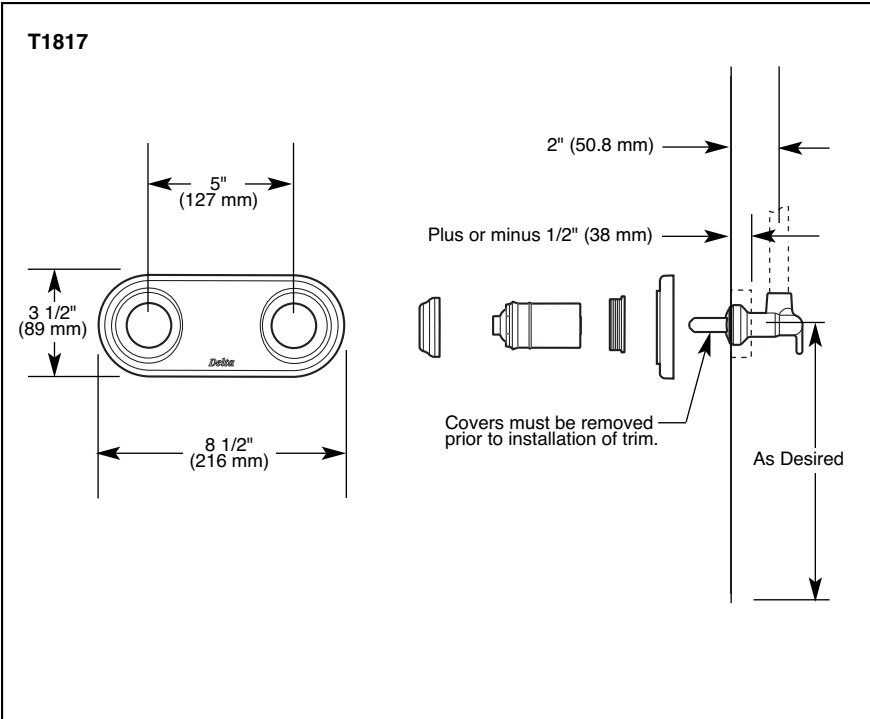
Delta reserves the right (1) to make changes in specifications and materials, and (2) to change or discontinue models, both without notice or obligation. Dimensions are for reference only. See current full-line price book or www.specselect.com for finish options and product availability.

DSP-B-R18224 Rev. A

55 E. 111th Street, Indianapolis, Indiana 46280
395 Matheson Blvd. E., Mississauga, ON L4Z 2H2
© 2007 Masco Corporation of Indiana



Submitted Model No.: _____
 Specific Features: _____



JETTED SHOWER XO™ JET MODULE TRIM

- T1817 Series
- T1837 Series

STANDARD SPECIFICATIONS:

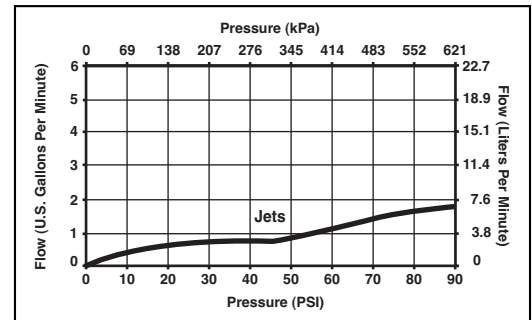
- For use with 18 Series Jetted Shower XO™ valve body rough (R18222 or R14442) and Jet Module Rough (R1817).

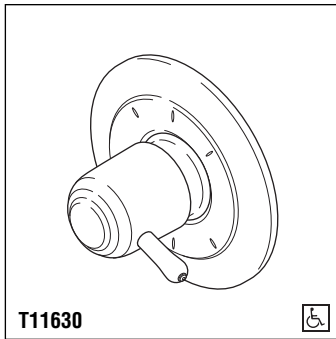
WARRANTY

- Lifetime Faucet and Finish Limited Warranty to the original consumer purchaser to be free from defects in material and workmanship.
- 5 Year Limited Warranty for usage in all industrial, commercial and business applications.

COMPLETE VALVE COMPLIES WITH:

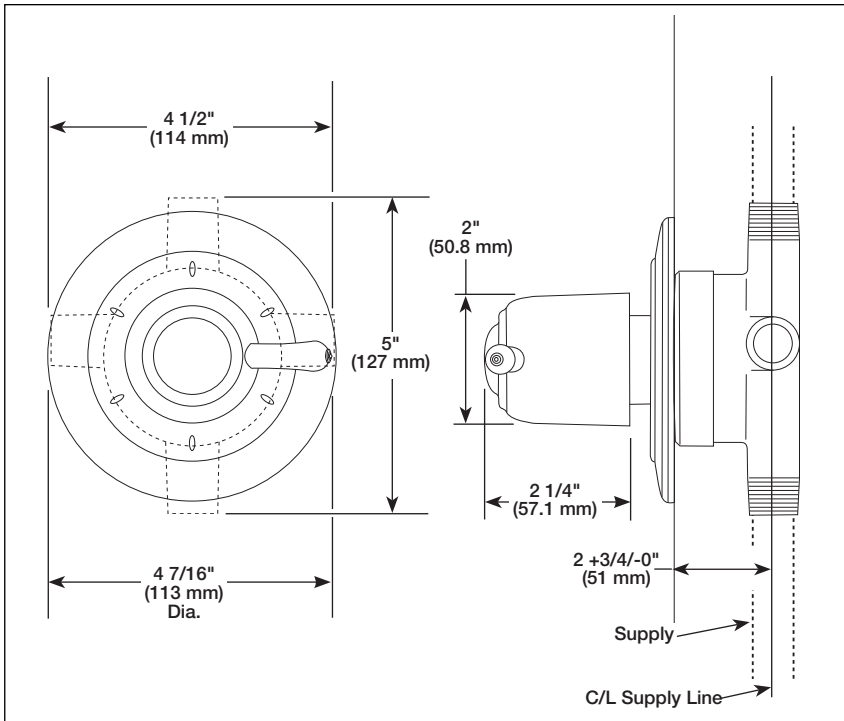
- ASME A112.18.1 / CSA B125.1





Submitted Model No.: _____

Specific Features: _____



CUSTOM SHOWER DIVERTER

- Innovations® Collection
- Six Function Diverter
- 1/2" Rough-In
- Coordinates With All Delta Innovations® Styled Bath Suites


STANDARD SPECIFICATIONS:

- Six function diverter.
- 3 individual positions, 3 shared positions.
- 1/2" rough-in.

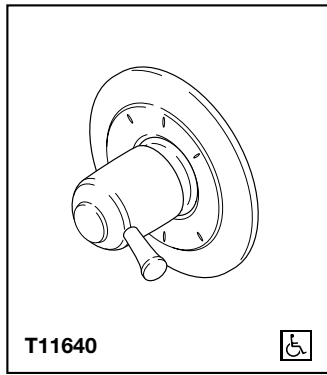
WARRANTY

- Lifetime Faucet and Finish Limited Warranty to the original consumer purchaser to be free from defects in material and workmanship.
- 5 Year Limited Warranty for usage in all industrial, commercial and business applications.

COMPLIES WITH:

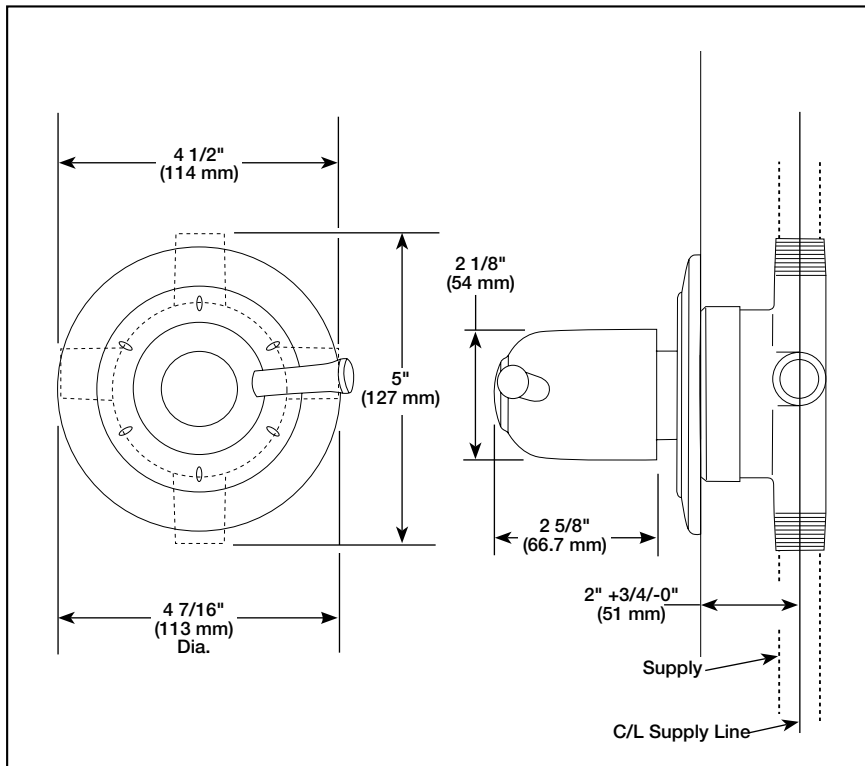
- ASME A112.18.1/CSA B125.1
-  Indicates ADA compliance to ICC/ANSI A117.1
- IAPMO Listed
- CSA Certified





Submitted Model No.: _____

Specific Features: _____



CUSTOM SHOWER DIVERTER

- Lockwood™ Collection
- Six Function Diverter
- 1/2" Rough-In
- Coordinates With All Delta Lockwood™ Styled Bath Suites


STANDARD SPECIFICATIONS

- Six function diverter.
- 3 individual positions, 3 shared positions.
- 1/2" rough-in.

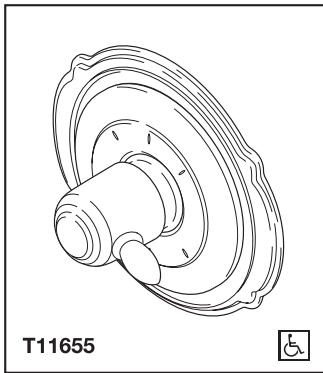
WARRANTY

- Lifetime Faucet and Finish Limited Warranty to the original consumer purchaser to be free from defects in material and workmanship.
- 5 Year Limited Warranty for usage in all industrial, commercial and business applications.

COMPLIES WITH:

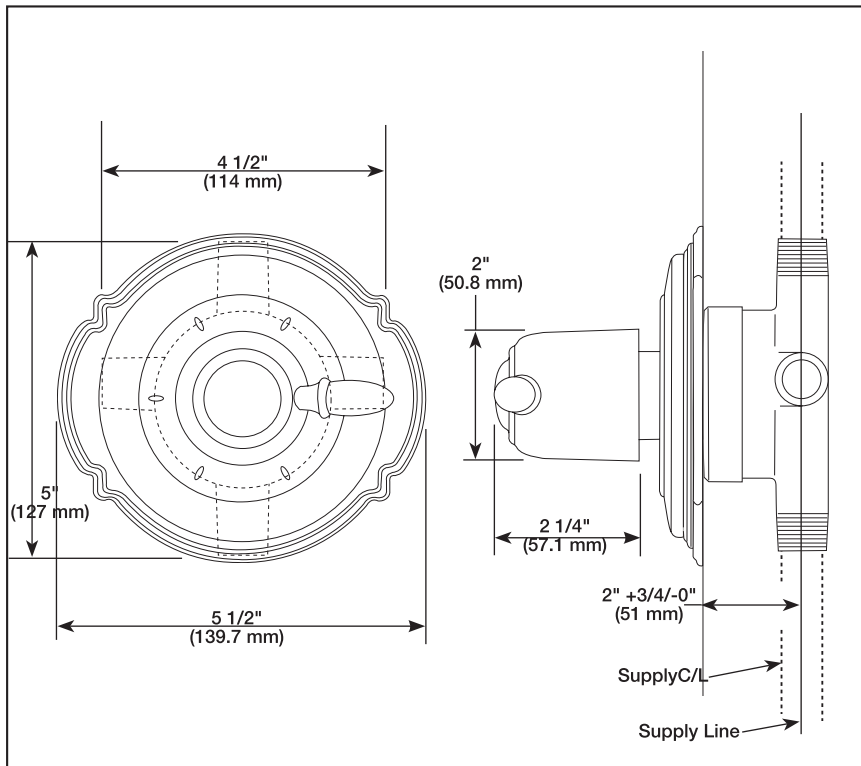
- ASME A112.18.1 / CSA B125.1
-  Indicates ADA compliance to ICC/ANSI A117.1
- IAPMO Listed
- CSA Certified





Submitted Model No.: _____

Specific Features: _____



CUSTOM SHOWER DIVERTER

- Victorian® Collection
- Six Function Diverter
- 1/2" Rough-In
- Coordinates With All Delta Victorian® Styled Bath Suites

STANDARD SPECIFICATIONS

- Six function diverter.
- 3 individual positions, 3 shared positions.
- 1/2" rough-in.

WARRANTY

- Lifetime Faucet and Finish Limited Warranty to the original consumer purchaser to be free from defects in material and workmanship.
- 5 Year Limited Warranty for usage in all industrial, commercial and business applications.

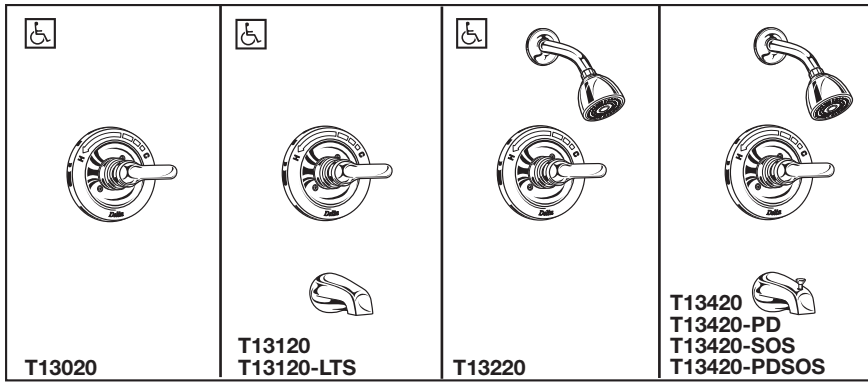
COMPLIES WITH:

- ASME A112.18.1 / CSA B125.1
-  Indicates ADA compliance to ICC/ANSI A117.1
- IAPMO Listed
- CSA Certified



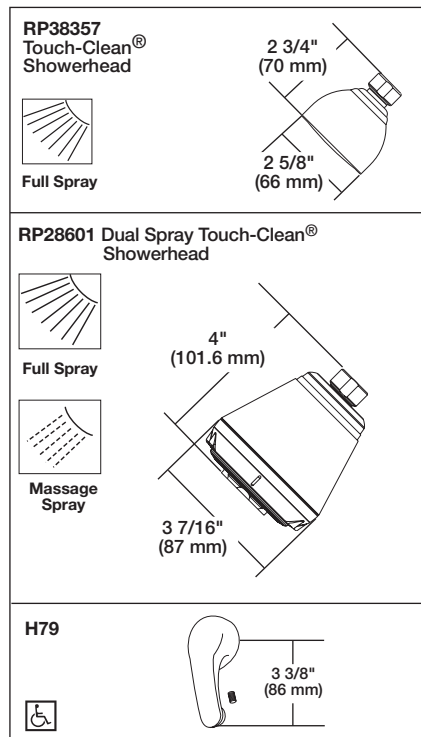
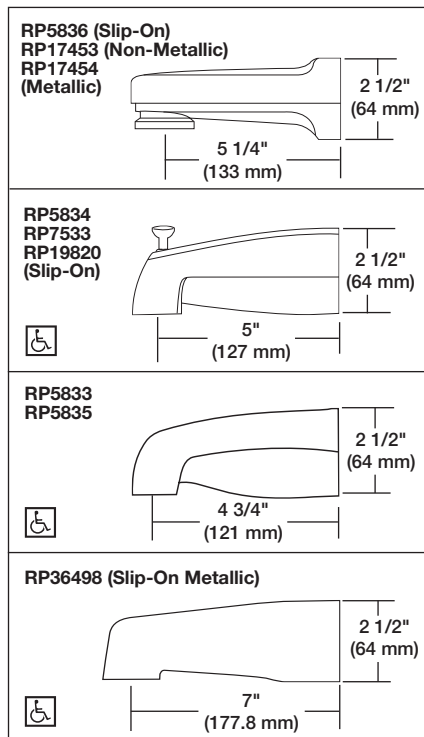
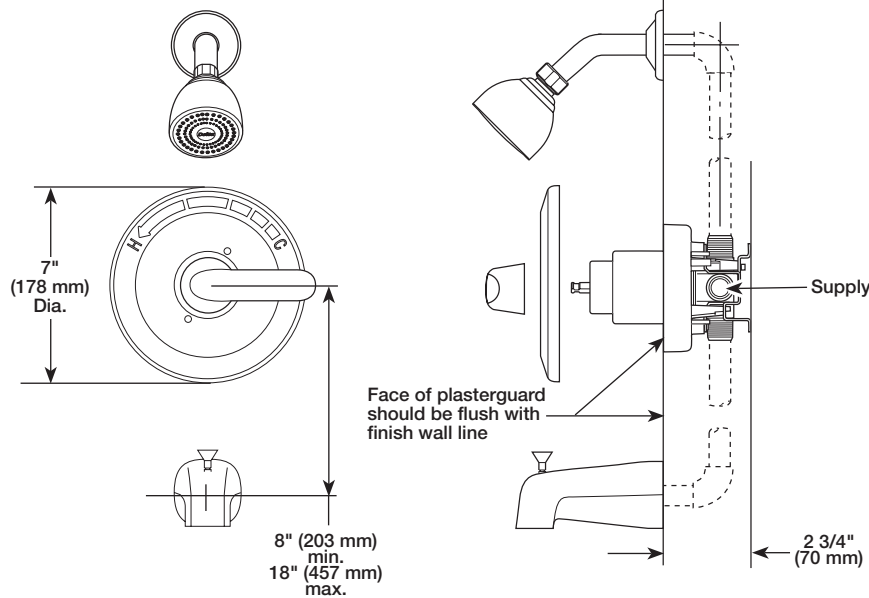
55 E. 111th Street, Indianapolis, Indiana 46280
395 Matheson Blvd. E., Mississauga, ON L4Z 2H2
© 2007 Masco Corporation of Indiana

Delta reserves the right (1) to make changes in specifications and materials, and (2) to change or discontinue models, both without notice or obligation. Dimensions are for reference only. See current full-line price book or www.specselect.com for finish options and product availability.



Submitted Model No.: _____

Specific Features: _____



TUB AND SHOWER FAUCET TRIM

- Valve Only (T13020 Series)
- Tub Only (T13120 Series)
- Shower Only (T13220 Series)
- Tub/Shower (T13420 Series)

STANDARD SPECIFICATIONS:

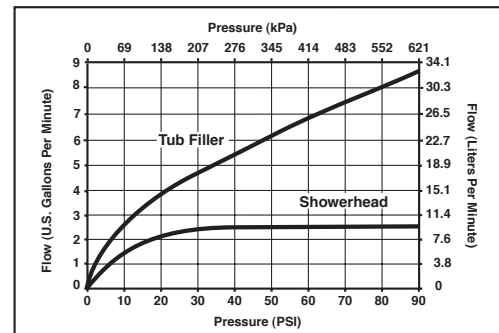
- Monitor® 13 Series pressure balanced bath mixing valve with Scald-Guard®.
- Maintains a balanced pressure of hot and cold water even when a valve is turned on or off elsewhere in the system.
- For use with MultiChoice™ Universal rough valve body. (R10000 Series)
- Back-to-back installation capability.
- Solid brass fabricated body.
- Temperature only controlled with metal lever handle.
- Field adjustable to limit handle rotation into hot water zone.
- 120° maximum handle rotation.
- All parts replaceable from the front of the valve.
- Models with "LTS" suffix supplied with 7" long non-diverter slip-on spout (RP36498).
- Models with "SOS" suffix supplied with slip-on spout for 1/2" C.W.T.
- Models with "PD" suffix supplied with 6" long pull-down diverter spout (RP17453).

WARRANTY

- Lifetime Faucet and Finish Limited Warranty to the original consumer purchaser to be free from defects in material and workmanship.
- 5 Year Limited Warranty for usage in all industrial, commercial and business applications.

COMPLIES WITH:

- ASME A112.18.1 / CSA B125.1
- ASSE 1016
- Indicates ADA compliance to ICC/ANSI A117.1

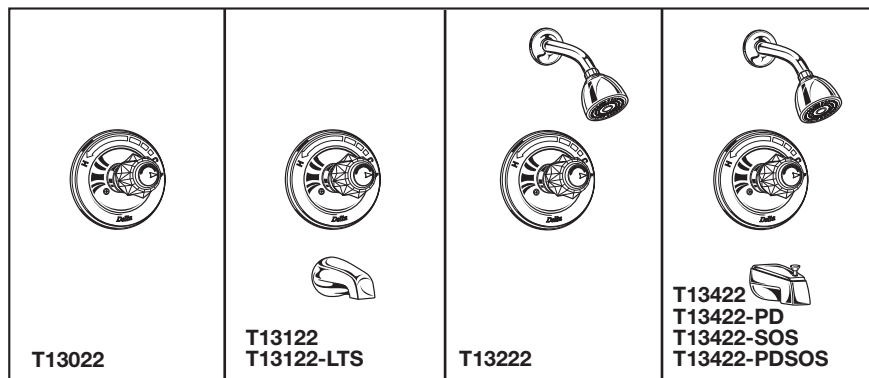


Delta reserves the right (1) to make changes in specifications and materials, and (2) to change or discontinue models, both without notice or obligation. Dimensions are for reference only. See current full-line price book or www.specselect.com for finish options and product availability.

2.D.10

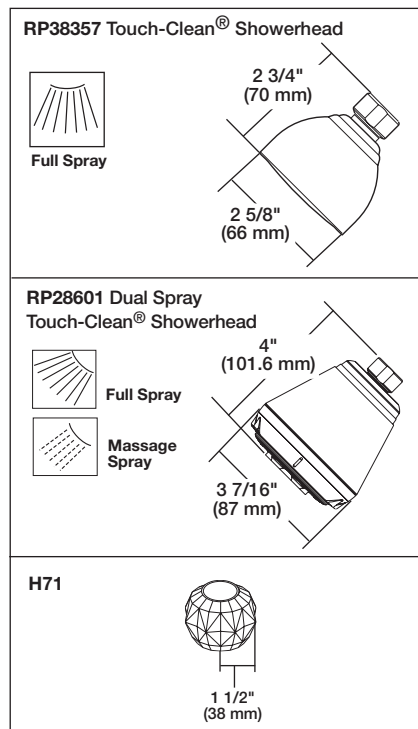
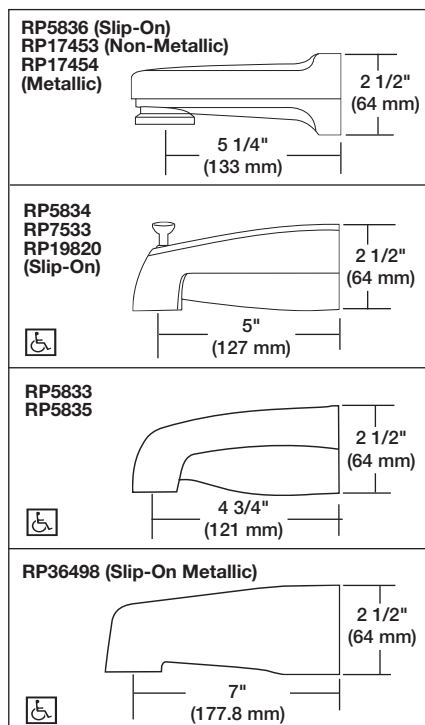
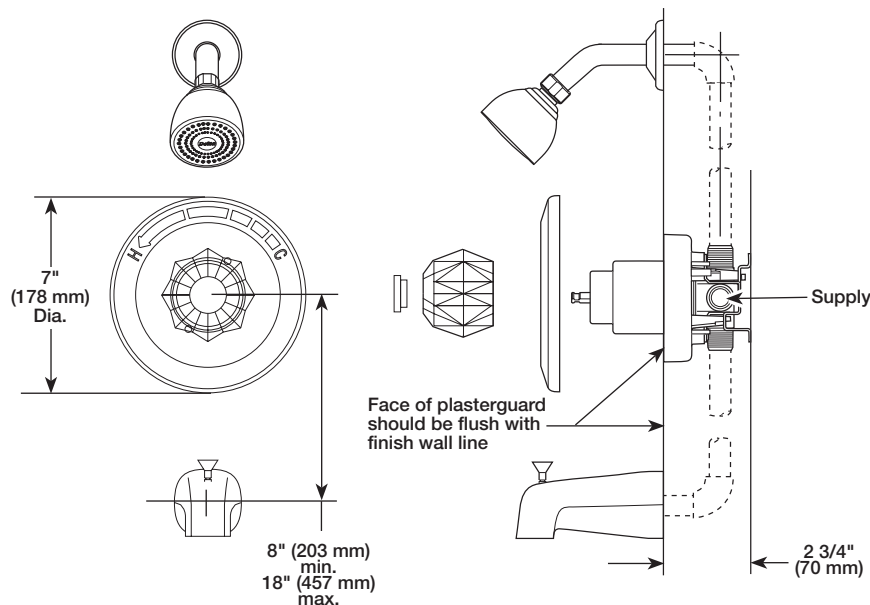
55 E. 111th Street, Indianapolis, IN 46280
 395 Matheson Blvd. E., Mississauga, ON L4Z 2H2
 © 2007 Masco Corporation of Indiana

DSP-B-T13020 Rev. A



Submitted Model No.: _____

Specific Features: _____



TUB AND SHOWER FAUCET TRIM

- Valve Only (T13022 Series)
- Tub Only (T13122 Series)
- Shower Only (T13222 Series)
- Tub/Shower (T13422 Series)

STANDARD SPECIFICATIONS:

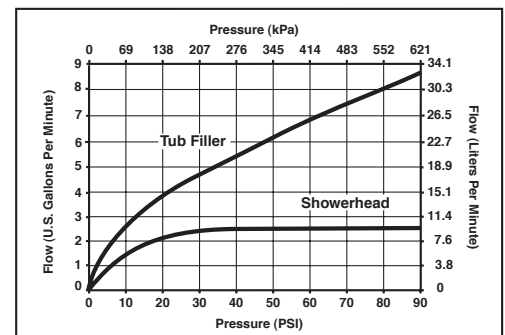
- Monitor® 13 Series pressure balanced bath mixing valve with Scald-Guard®.
- Maintains a balanced pressure of hot and cold water even when a valve is turned on or off elsewhere in the system.
- For use with MultiChoice™ Universal rough valve body. (R10000 Series)
- Back-to-back installation capability.
- Solid brass fabricated body.
- Temperature only controlled with handle. Clear knob handle with red/blue indicators.
- Field adjustable to limit handle rotation into hot water zone.
- 120° maximum handle rotation.
- All parts replaceable from the front of the valve.
- Models with "LTS" Suffix supplied with 7" long non-diverter slip on spout (RP36498).
- Models with "SOS" suffix supplied with slip-on spout for 1/2" C.W.T.
- Models with "PD" suffix supplied with 6" long pull-down diverter spout (RP17453).

WARRANTY

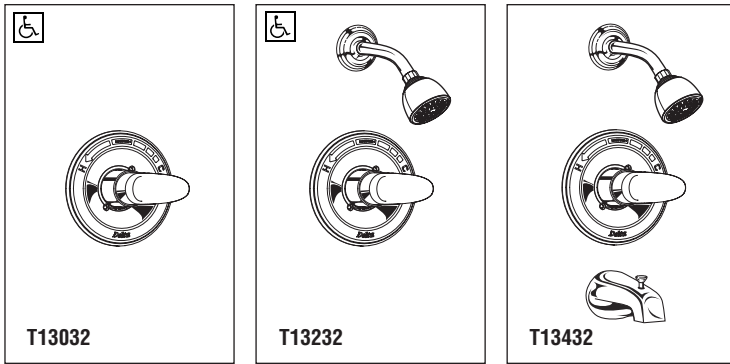
- Lifetime Faucet and Finish Limited Warranty to the original consumer purchaser to be free from defects in material and workmanship.
- 5 Year Limited Warranty for usage in all industrial, commercial and business applications.

COMPLIES WITH:

- ASME A112.18.1 / CSA B125.1
- ASSE 1016

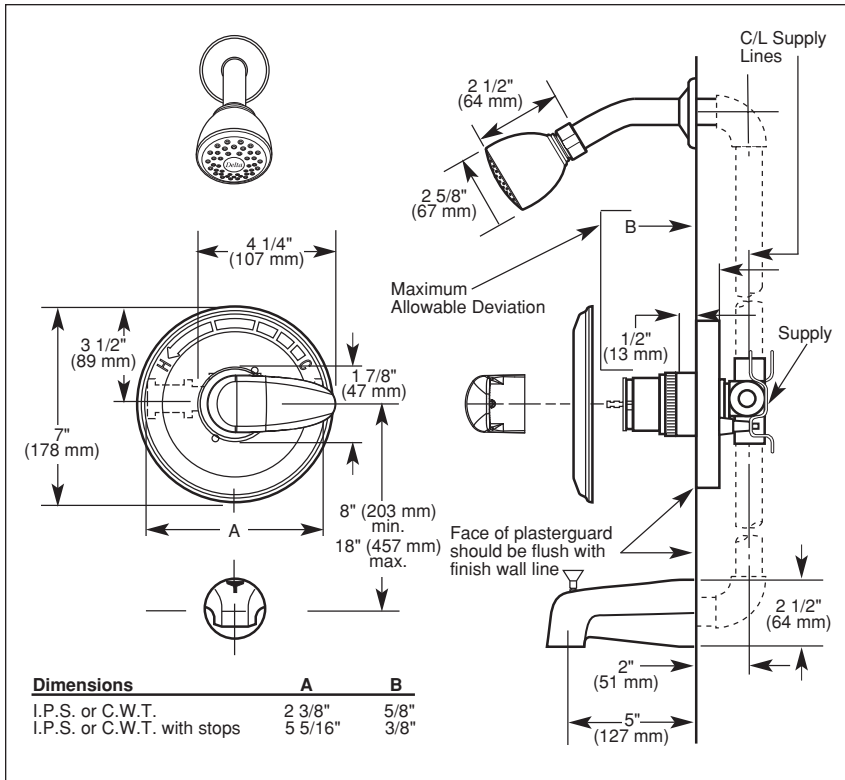


Delta reserves the right (1) to make changes in specifications and materials, and (2) to change or discontinue models, both without notice or obligation. Dimensions are for reference only. See current full-line price book or www.specselect.com for finish options and product availability.



Submitted Model No.: _____

Specific Features: _____



DELTA[®]

TUB AND SHOWER FAUCET TRIM

- Spree™ Series
- Valve Only (T13032)
- Shower Only (T13232)
- Tub/Shower (T13432)

STANDARD SPECIFICATIONS:

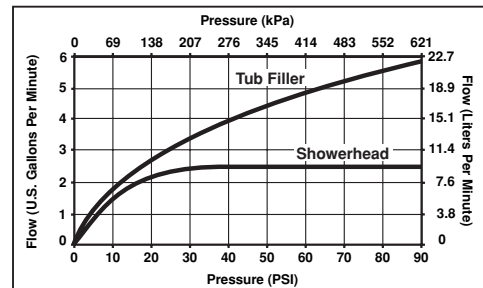
- Pressure balanced single bath mixing valve trim.
- Lever handle.
- For use with MultiChoice™ Universal rough valve body (R10000 series).
- Field adjustable to limit handle rotation into hot water zone.
- All parts shall be replaceable from the front of the valve.

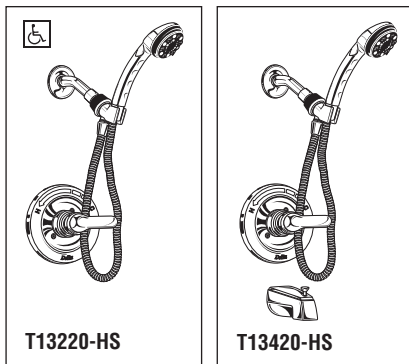
WARRANTY

- Lifetime Faucet and Finish Limited Warranty to the original consumer purchaser to be free from defects in material and workmanship.
- 5 Year Limited Warranty for usage in all industrial, commercial and business applications.

COMPLIES WITH:

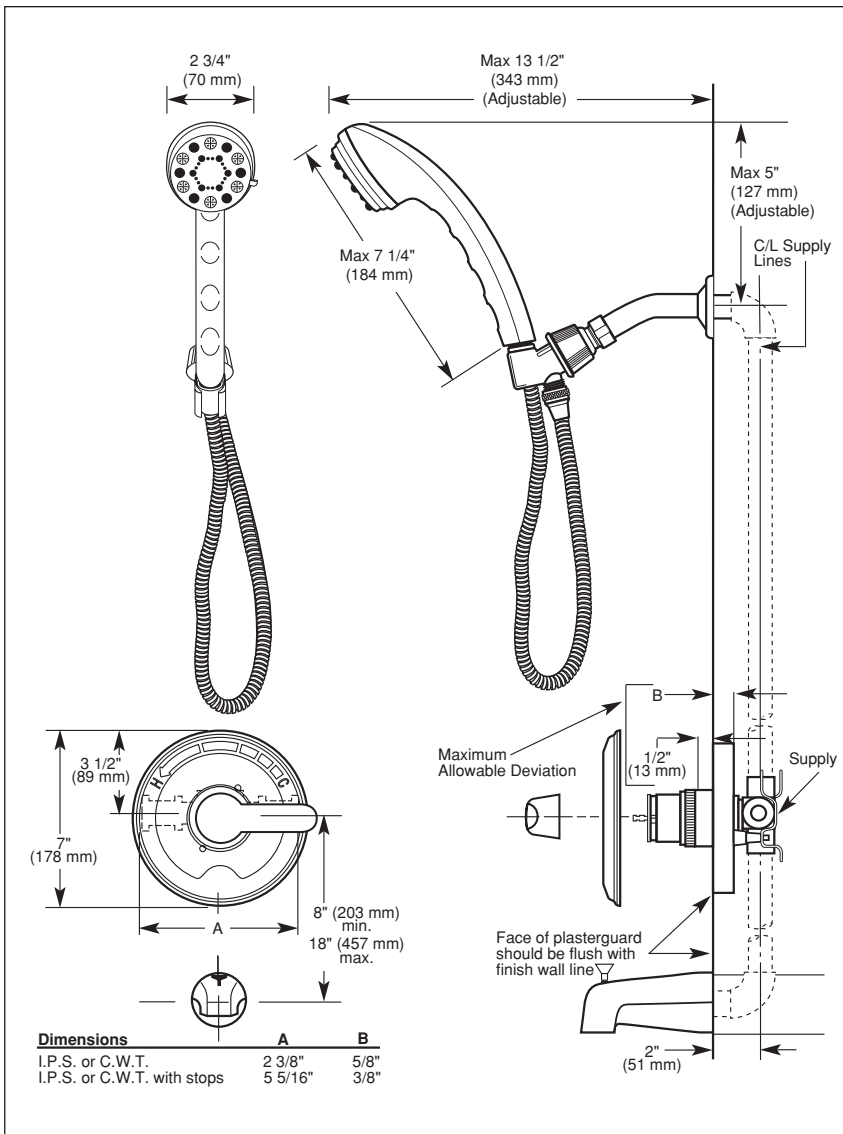
- ASME A112.18.1/CSA B125.1
- ASSE 1016-1996
- Showerhead GSA AA-240
- Indicates ADA compliance to ICC/ANSI A117.1
- ASSE Seal Authorized
- CSA Certified





Submitted Model No.: _____

Specific Features: _____



DELTA

TUB AND SHOWER FAUCET TRIM

- Shower Only (T13220-HS)
- Tub/Shower (T13420-HS)
- Single Handle
- Temperature Only Controlled with Handle


STANDARD SPECIFICATIONS:

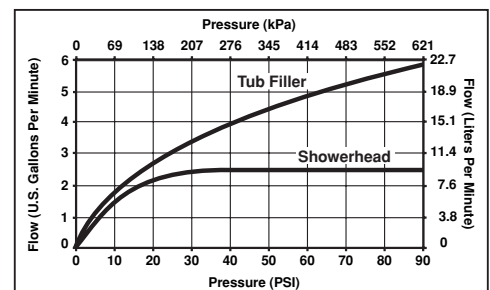
- Pressure balanced single handle bath trim.
- Lever handle.
- For use with MultiChoice™ Universal valve body (R10000 Series).
- Temperature only controlled with handle.
- Field adjustable to limit handle rotation into hot water zone.
- 180° maximum handle rotation.
- All parts shall be replaceable from the front of the valve.
- 60" hose (1530 mm).

WARRANTY

- Lifetime Faucet and Finish Limited Warranty to the original consumer purchaser to be free from defects in material and workmanship.
- 5 Year Limited Warranty for usage in all industrial, commercial and business applications.

COMPLIES WITH:

- ASME A112.18.1m-1996
- ASSE 1016-1996
- CSA B125-93
- Showerhead GSA A-A-240
-  Indicates ADA compliance to CABO/ANSI A117.1-1992
- ASSE Seal Authorized
- City of L.A. approved
- CSA Certified
- IAPMO Listed

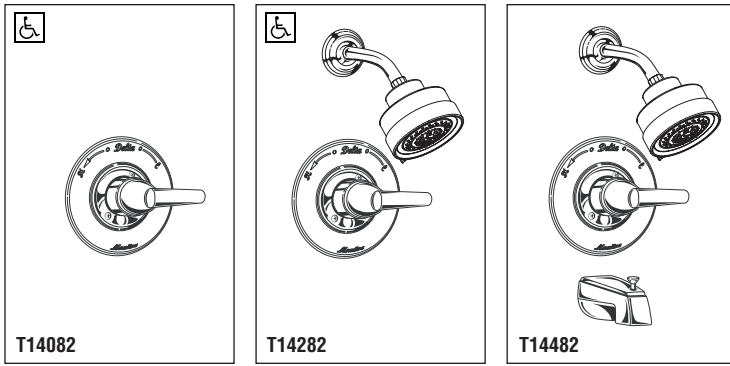


DELTA
FAUCET COMPANY

Delta reserves the right (1) to make changes in specifications and materials, and (2) to change or discontinue models, both without notice or obligation. Dimensions are for reference only. See current full-line price book or www.specselect.com for finish options and product availability.

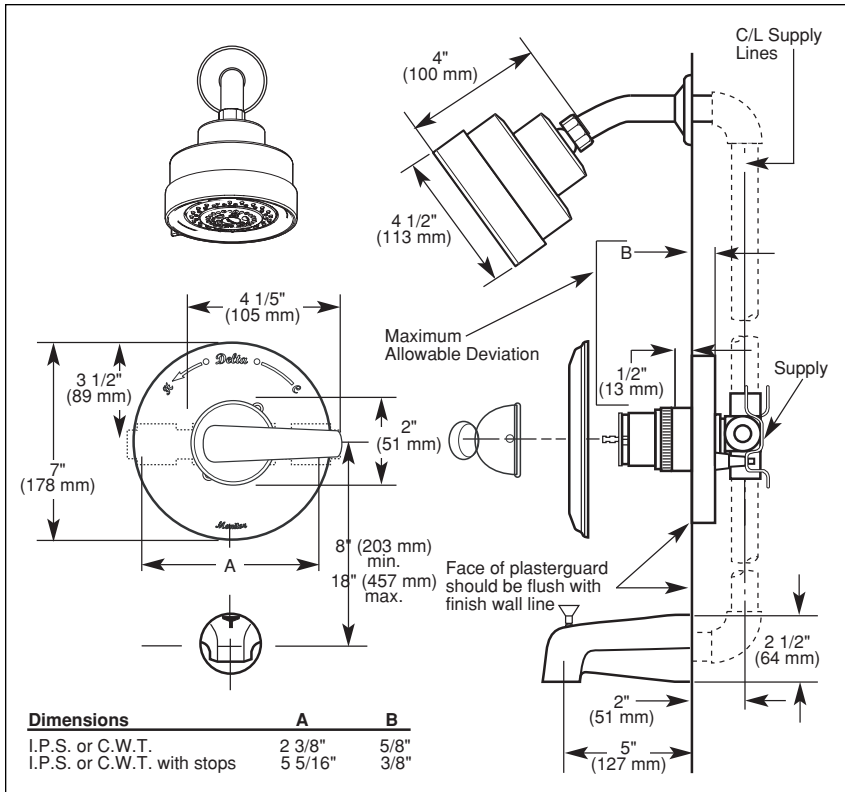
DSP-B-13220-HS Rev. A

55 E. 111th Street, Indianapolis, Indiana 46280
395 Matheson Blvd. E., Mississauga, ON L4Z 2H2
© 2007 Masco Corporation of Indiana



Submitted Model No.: _____

Specific Features: _____



TUB AND SHOWER FAUCET TRIM

- Rhythm™ Series
- Valve Only (T14082)
- Shower Only (T14282)
- Tub/Shower (T14482)
- Single Handle

STANDARD SPECIFICATIONS:

- Pressure balanced single handle bath mixing valve trim.
- Temperature only controlled with handle.
- Field adjustable to limit handle rotation into hot water zone.
- 120° maximum handle rotation.
- All parts shall be replaceable from the front of the valve.
- For use with MultiChoice™ Universal rough valve body (R10000 series).
- 3 function spray/Touch-Clean® Showerhead.
- Lever handle.

WARRANTY

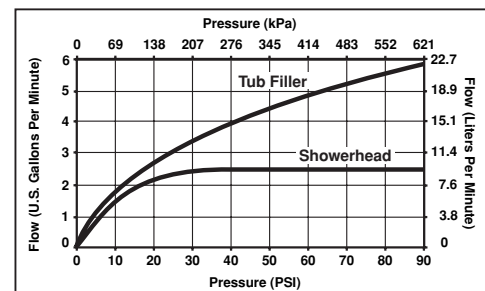
- Lifetime Faucet and Finish Limited Warranty to the original consumer purchaser to be free from defects in material and workmanship.
- 5 Year Limited Warranty for usage in all industrial, commercial and business applications.

COMPLIES WITH:

- ASME A112.18.1/CSA B125.1
- ASSE 1016-1996
- Showerhead GSA A-A-240

Indicates ADA compliance to ICC/ANSI A117.1

- ASSE Seal Authorized
- CSA Certified

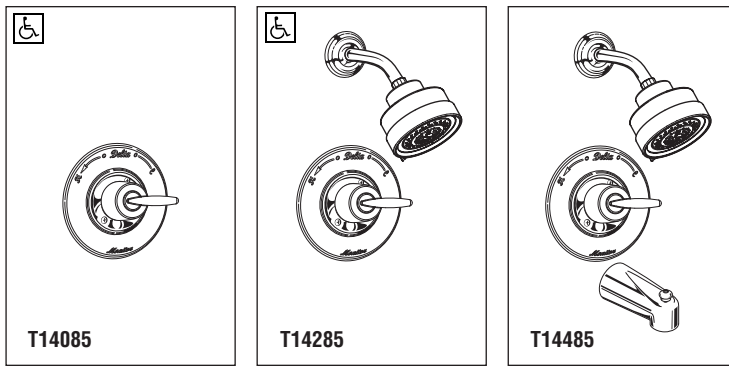


Delta reserves the right (1) to make changes in specifications and materials, and (2) to change or discontinue models, both without notice or obligation. Dimensions are for reference only. See current full-line price book or www.specselect.com for finish options and product availability.

2.D.14

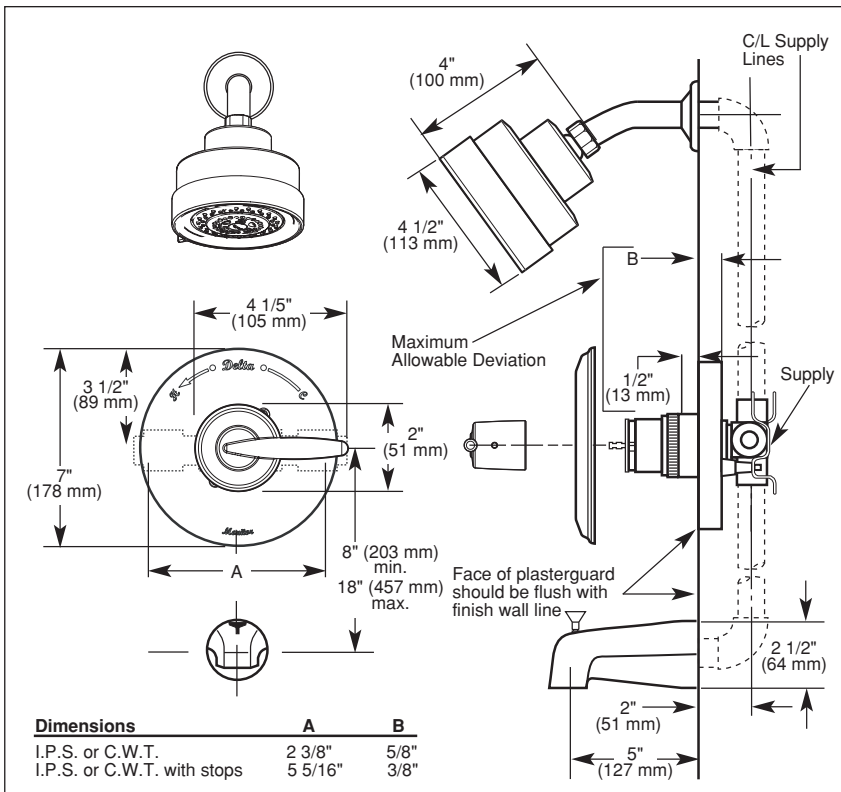
55 E. 111th Street, Indianapolis, Indiana 46280
395 Matheson Blvd. E., Mississauga, ON L4Z 2H2
© 2007 Masco Corporation of Indiana

DSP-B-T14082 Rev. B



Submitted Model No.: _____

Specific Features: _____



DELTA

TUB AND SHOWER FAUCET TRIM

- Grail™ Series
- Valve Only Trim (T14085)
- Shower Only Trim (T14285)
- Tub/Shower Trim (T14485)
- Single Handle

STANDARD SPECIFICATIONS:

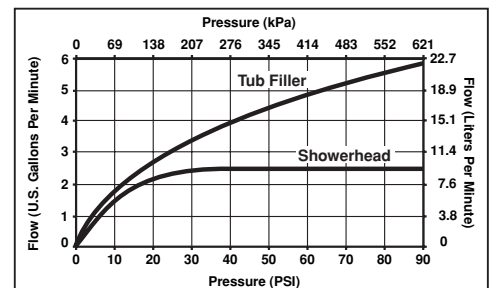
- Pressure balanced single handle bath mixing valve trim.
- Lever handle.
- For use with MultiChoice™ Universal rough valve body (R10000 series).
- Temperature only controlled with handle.
- Field adjustable to limit handle rotation into hot water zone.
- 120° maximum handle rotation.
- All parts shall be replaceable from the front of the valve.
- 3 function spray/Touch-Clean® Showerhead.

WARRANTY

- Lifetime Faucet and Finish Limited Warranty to the original consumer purchaser to be free from defects in material and workmanship.
- 5 Year Limited Warranty for usage in all industrial, commercial and business applications.

COMPLIES WITH:

- ASME A112.18.1/CSA B125.1
- ASSE 1016-1996
- Showerhead GSA A-A-240
- Indicates ADA compliance to ICC/ANSI A117.1
- ASSE Seal Authorized
- CSA Certified



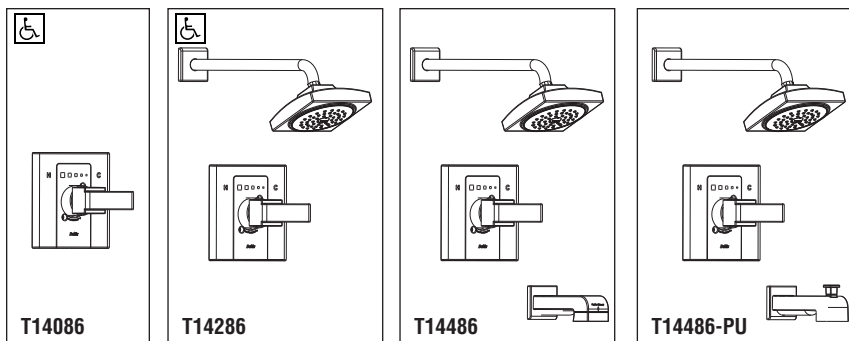
DELTA
FAUCET COMPANY

Delta reserves the right (1) to make changes in specifications and materials, and (2) to change or discontinue models, both without notice or obligation. Dimensions are for reference only. See current full-line price book or www.specselect.com for finish options and product availability.

DSP-B-T14085 Rev. A

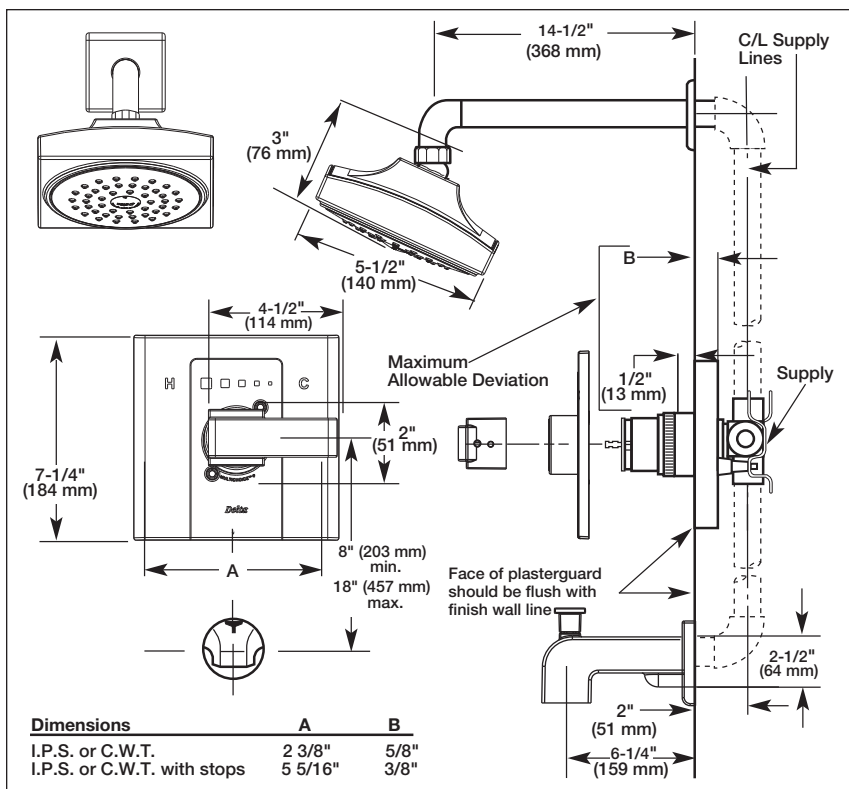
55 E. 111th Street, Indianapolis, Indiana 46280
395 Matheson Blvd. E., Mississauga, ON L4Z 2H2
© 2007 Masco Corporation of Indiana

2.D.15



Submitted Model No.: _____

Specific Features: _____



TUB AND SHOWER FAUCET TRIM

- Arzo™ Series
- Valve Only Trim (T14086)
- Shower Only Trim (T14286)
- Tub/Shower Trim (T14486)
- Tub/Shower Trim - Pull-Up Tub Spout (T14486-PU)
- Single Handle

STANDARD SPECIFICATIONS:

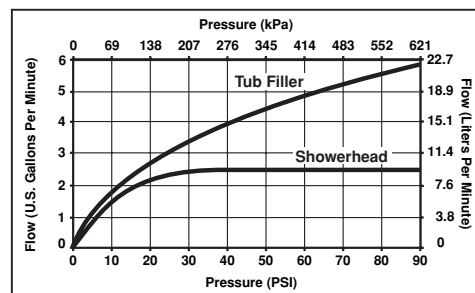
- Pressure balanced single handle bath mixing valve trim.
- Lever handle.
- For use with MultiChoice™ Universal rough valve body (R10000 series).
- Temperature only controlled with handle.
- Field adjustable to limit handle rotation into hot water zone.
- 120° maximum handle rotation.
- All parts shall be replaceable from the front of the valve.
- Single function spray/Touch-Clean® Showerhead.

WARRANTY

- Lifetime Faucet and Finish Limited Warranty to the original consumer purchaser to be free from defects in material and workmanship.
- 5 Year Limited Warranty for usage in all industrial, commercial and business applications.

COMPLIES WITH:

- ASME A112.18.1/CSA B125.1
- ASSE 1016-1996
- Indicates ADA compliance to ICC/ANSI A117.1
- ASSE Seal Authorized
- CSA Certified

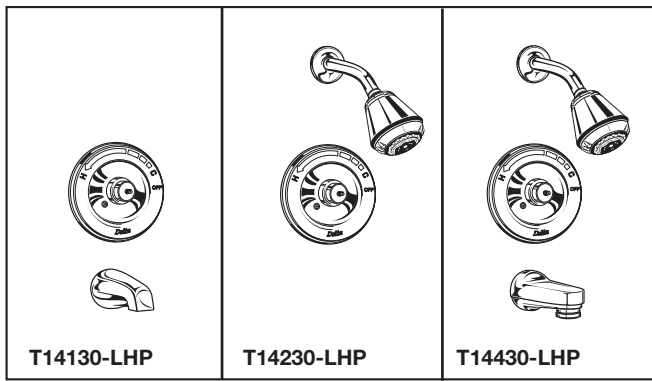


Delta reserves the right (1) to make changes in specifications and materials, and (2) to change or discontinue models, both without notice or obligation. Dimensions are for reference only. See current full-line price book or www.specselect.com for finish options and product availability.

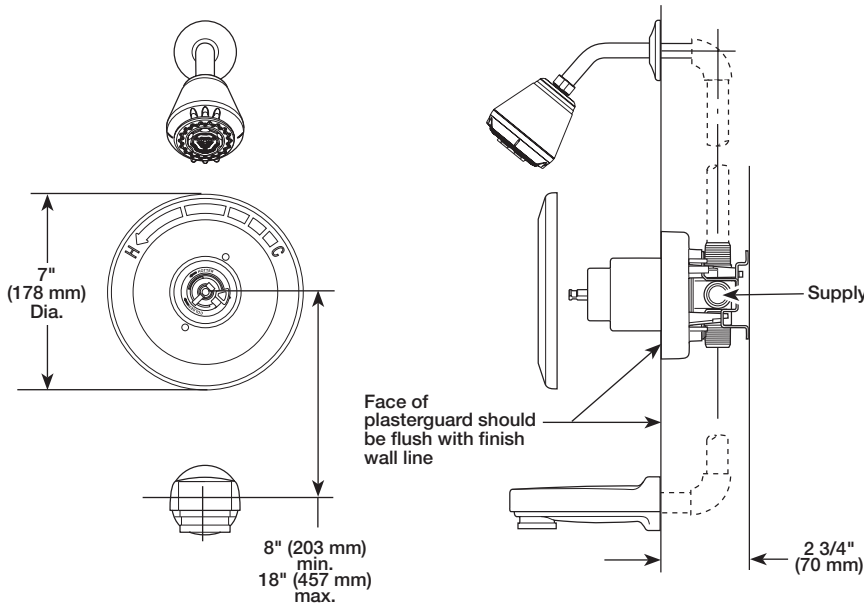
2.D.16

55 E. 111th Street, Indianapolis, Indiana 46280
395 Matheson Blvd. E., Mississauga, ON L4Z 2H2
© 2007 Masco Corporation of Indiana

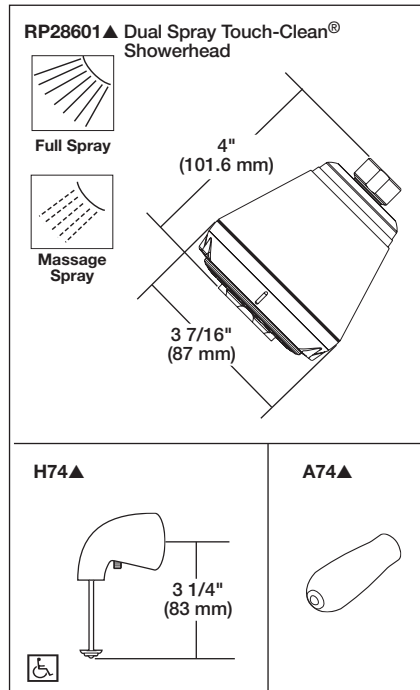
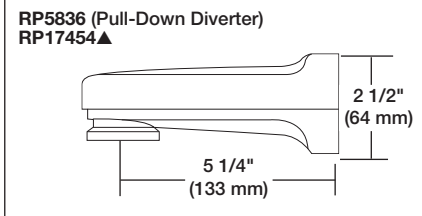
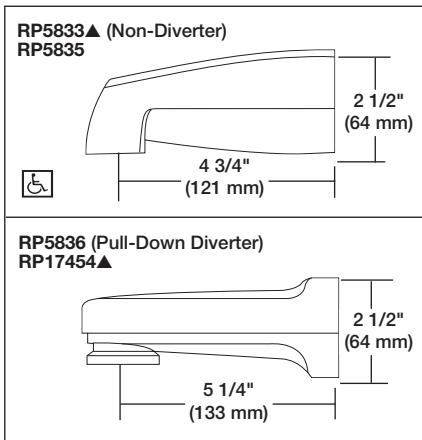
DSP-B-T14086 Rev. A



Submitted Model No.: _____
 Specific Features: _____



▲ = Specify Finish



TUB AND SHOWER FAUCET TRIM

- Innovations® Collection
- Tub Only (T14130 Series)
- Shower Only (T14230 Series)
- Tub/Shower (T14430 Series)

STANDARD SPECIFICATIONS:

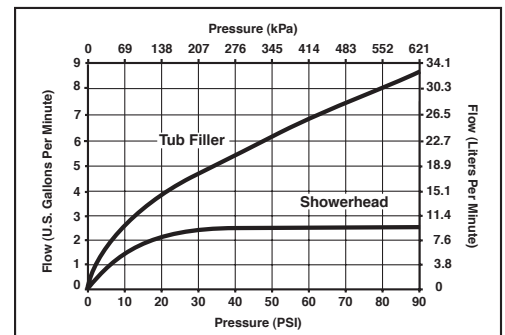
- Monitor® 14 Series pressure balanced bath mixing valve with Scald-Guard®.
- Maintains a balanced pressure of hot and cold water even when a valve is turned on or off elsewhere in the system.
- For use with MultiChoice™ Universal rough valve body. (R10000 Series)
- Back-to-back installation capability.
- Solid brass fabricated body.
- Temperature only controlled with handle.
- Field adjustable to limit handle rotation into hot water zone.
- 120° maximum handle rotation.
- All parts replaceable from the front of the valve.
- LHP - less handle program - see recommended handle below.

WARRANTY

- Lifetime Faucet and Finish Limited Warranty to the original consumer purchaser to be free from defects in material and workmanship.
- 5 Year Limited Warranty for usage in all industrial, commercial and business applications.

COMPLIES WITH:

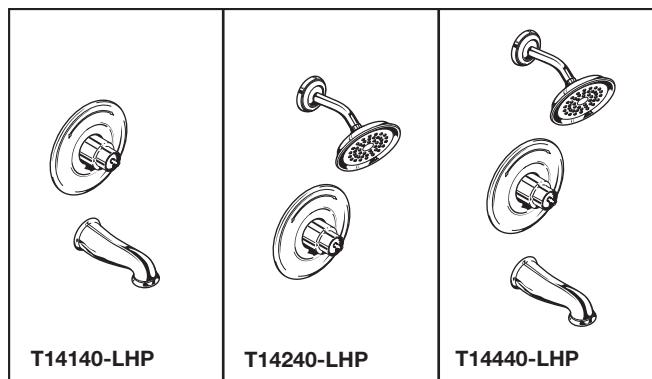
- ASME A112.18.1 / CSA B125.1
- ASSE 1016
- Indicates ADA compliance to ICC/ANSI A117.1



Delta reserves the right (1) to make changes in specifications and materials, and (2) to change or discontinue models, both without notice or obligation. Dimensions are for reference only. See current full-line price book or www.specselect.com for finish options and product availability.

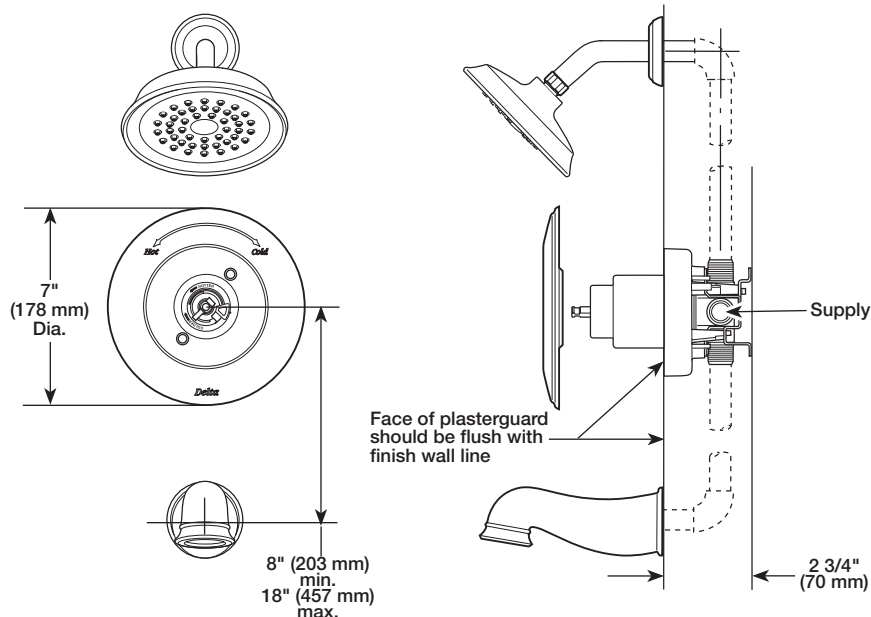
DSP-B-T14130-LHP Rev. A

55 E. 111th Street, Indianapolis, IN 46280
 395 Matheson Blvd. E., Mississauga, ON L4Z 2H2
 © 2007 Masco Corporation of Indiana

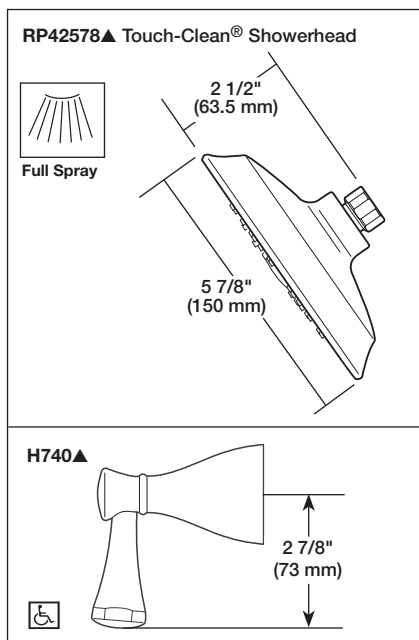
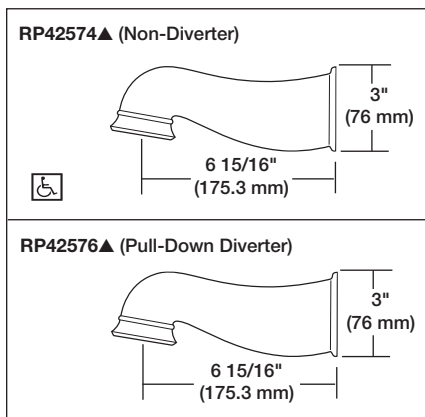


Submitted Model No.: _____

Specific Features: _____



▲ = Specify Finish



DELTA[®]

TUB AND SHOWER FAUCET TRIM

- Lockwood[™] Collection
- Tub Only (T14140 Series)
- Shower Only (T14240 Series)
- Tub/Shower (T14440 Series)

STANDARD SPECIFICATIONS:

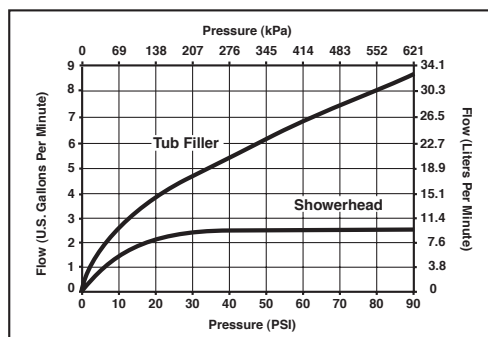
- Monitor[®] 14 Series pressure balanced bath mixing valve with Scald-Guard[®].
- Maintains a balanced pressure of hot and cold water even when a valve is turned on or off elsewhere in the system.
- For use with MultiChoice[™] Universal rough valve body. (R10000 Series)
- Back-to-back installation capability.
- Solid brass fabricated body.
- Temperature only controlled with handle.
- Field adjustable to limit handle rotation into hot water zone.
- 120° maximum handle rotation.
- All parts replaceable from the front of the valve.
- LHP - less handle program - see recommended handle below.

WARRANTY

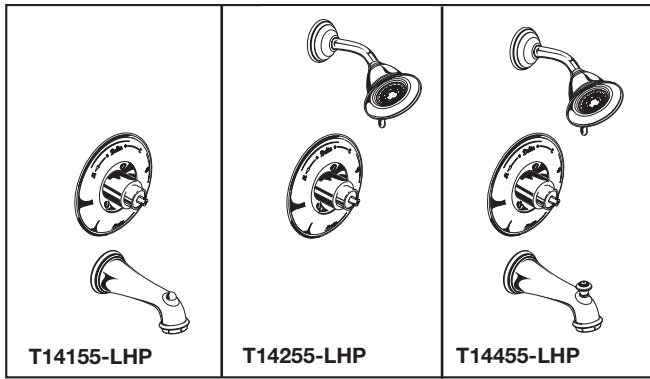
- Lifetime Faucet and Finish Limited Warranty to the original consumer purchaser to be free from defects in material and workmanship.
- 5 Year Limited Warranty for usage in all industrial, commercial and business applications.

COMPLIES WITH:

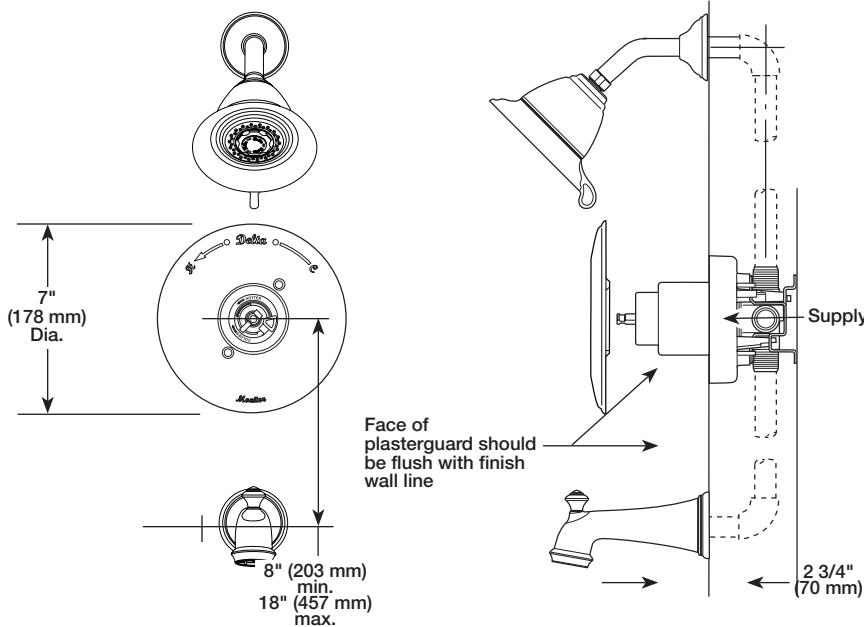
- ASME A112.18.1 / CSA B125.1
- ASSE 1016
- Indicates ADA compliance to ICC/ANSI A117.1



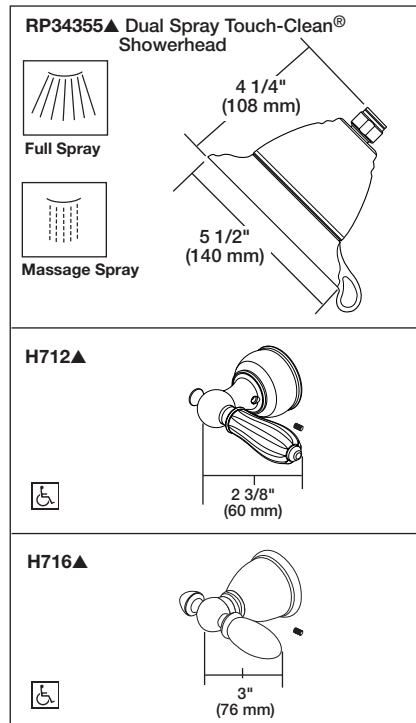
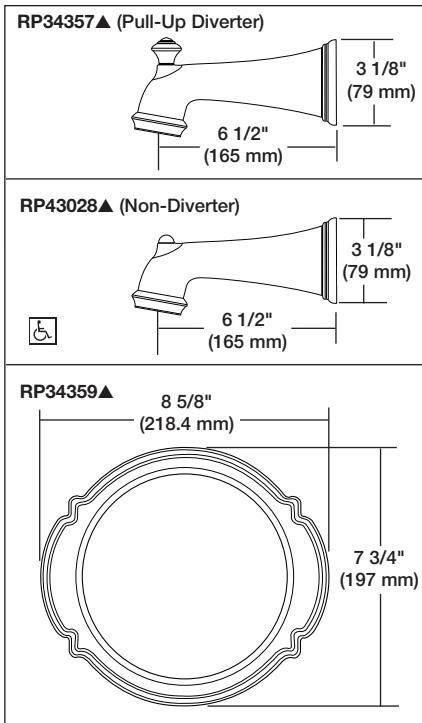
Delta reserves the right (1) to make changes in specifications and materials, and (2) to change or discontinue models, both without notice or obligation. Dimensions are for reference only. See current full-line price book or www.specselect.com for finish options and product availability.



Submitted Model No.: _____
 Specific Features: _____



▲ = Specify Finish



DELTA

TUB AND SHOWER FAUCET TRIM

- Victorian® Collection
- Tub Only (T14155 Series)
- Shower Only (T14255 Series)
- Tub/Shower (T14455 Series)

STANDARD SPECIFICATIONS:

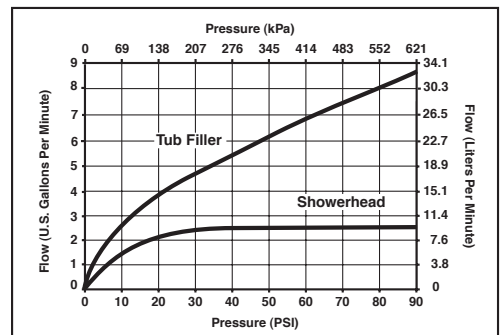
- Monitor® 14 Series pressure balanced bath mixing valve with Scald-Guard®.
- Maintains a balanced pressure of hot and cold water even when a valve is turned on or off elsewhere in the system.
- For use with MultiChoice™ Universal rough valve body. (R10000 Series)
- Back-to-back installation capability.
- Solid brass fabricated body.
- Temperature only controlled with handle.
- Field adjustable to limit handle rotation into hot water zone.
- 120° maximum handle rotation.
- All parts replaceable from the front of the valve.
- Decorative trim ring available as RP34359.
- LHP - less handle program - see recommended handles below.

WARRANTY

- Lifetime Faucet and Finish Limited Warranty to the original consumer purchaser to be free from defects in material and workmanship.
- 5 Year Limited Warranty for usage in all industrial, commercial and business applications.

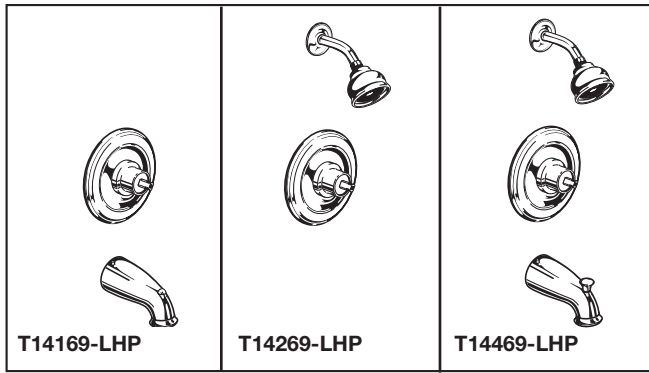
COMPLIES WITH:

- ASME A112.18.1 / CSA B125.1
- ASSE 1016
- Indicates ADA compliance to ICC/ANSI A117.1

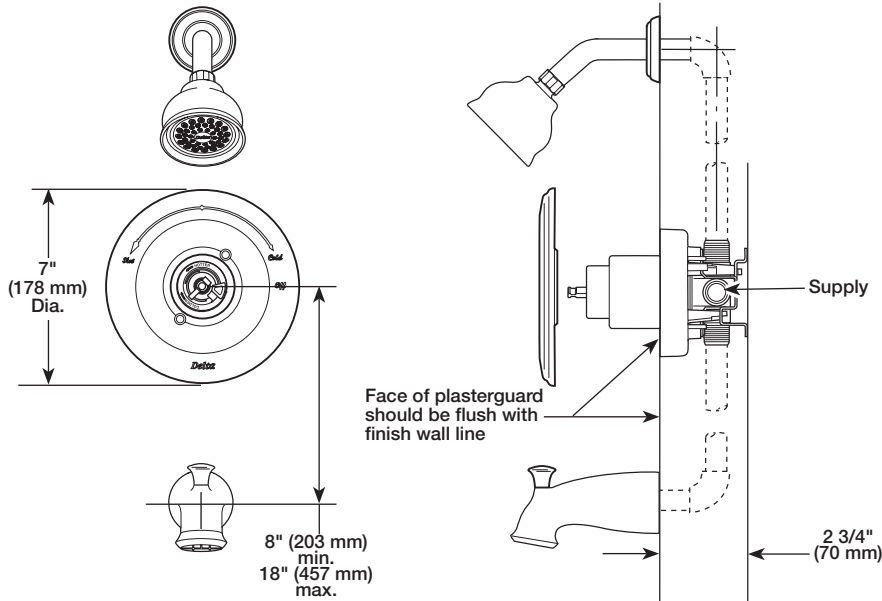


55 E. 111th Street, Indianapolis, IN 46280
 395 Matheson Blvd. E., Mississauga, ON L4Z 2H2
 © 2007 Masco Corporation of Indiana

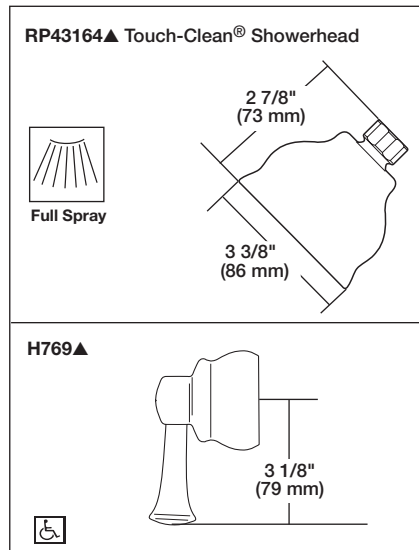
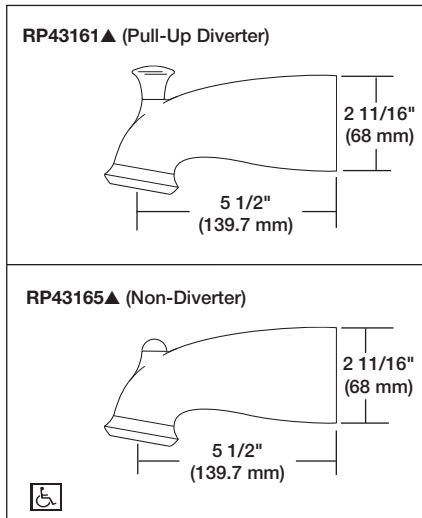
Delta reserves the right (1) to make changes in specifications and materials, and (2) to change or discontinue models, both without notice or obligation. Dimensions are for reference only. See current full-line price book or www.specselect.com for finish options and product availability.



Submitted Model No.: _____
 Specific Features: _____



▲ = Specify Finish



DELTA[®]

TUB AND SHOWER FAUCET TRIM

- Orleans™ Bath Series
- Tub Only (T14169 Series)
- Shower Only (T14269 Series)
- Tub/Shower (T14469 Series)

STANDARD SPECIFICATIONS:

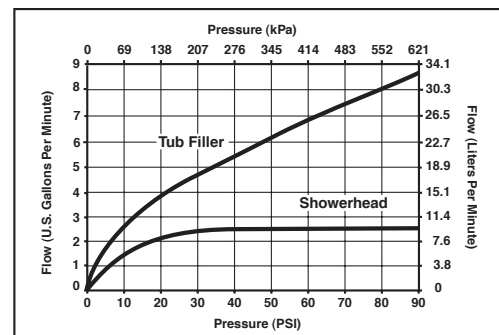
- Monitor® 14 Series pressure balanced bath mixing valve with Scald-Guard®.
- Maintains a balanced pressure of hot and cold water even when a valve is turned on or off elsewhere in the system.
- For use with MultiChoice™ Universal rough valve body. (R10000 Series)
- Back-to-back installation capability.
- Solid brass fabricated body.
- Temperature only controlled with handle.
- Field adjustable to limit handle rotation into hot water zone.
- 120° maximum handle rotation.
- All parts replaceable from the front of the valve.
- LHP - less handle program - see recommended handle below.

WARRANTY

- Lifetime Faucet and Finish Limited Warranty to the original consumer purchaser to be free from defects in material and workmanship.
- 5 Year Limited Warranty for usage in all industrial, commercial and business applications.

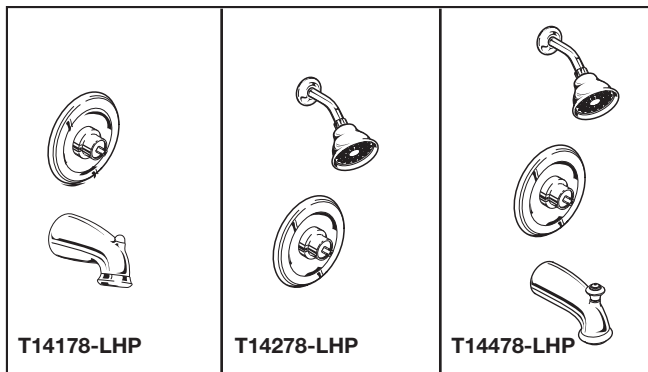
COMPLIES WITH:

- ASME A112.18.1 / CSA B125.1
- ASSE 1016
- Indicates ADA compliance to ICC/ANSI A117.1



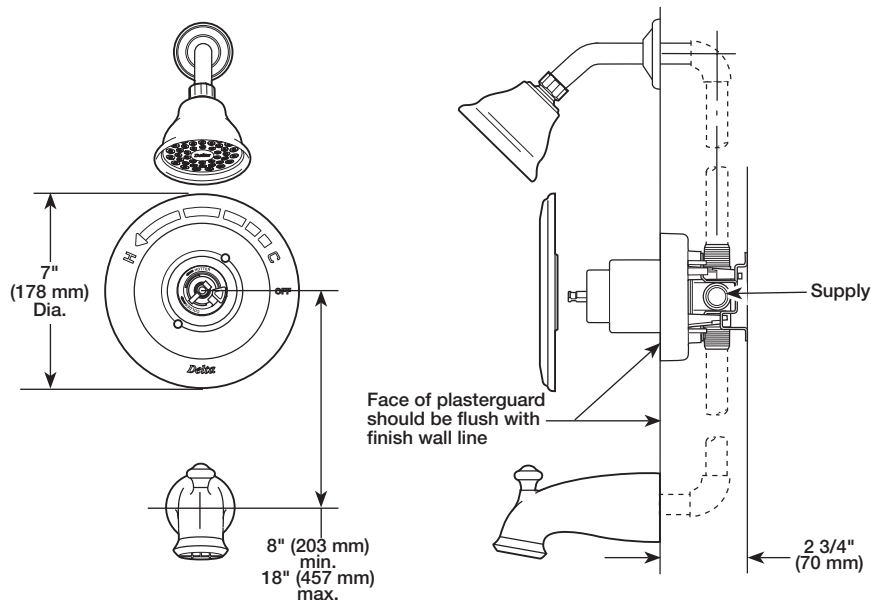
Delta reserves the right (1) to make changes in specifications and materials, and (2) to change or discontinue models, both without notice or obligation. Dimensions are for reference only. See current full-line price book or www.specselect.com for finish options and product availability.

55 E. 111th Street, Indianapolis, IN 46280
 395 Matheson Blvd. E., Mississauga, ON L4Z 2H2
 © 2007 Masco Corporation of Indiana

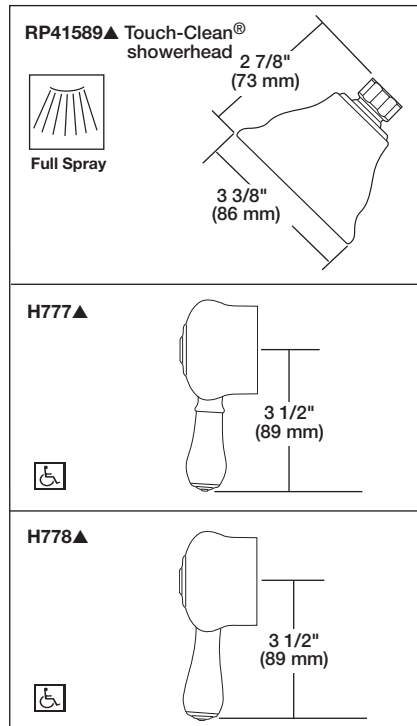
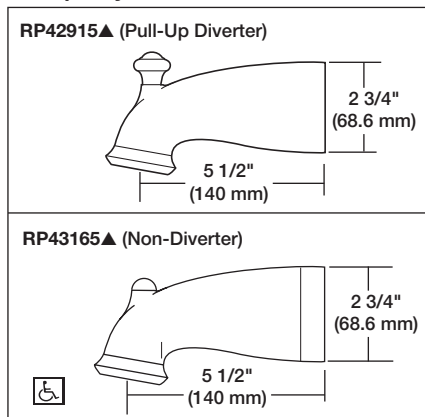


Submitted Model No.: _____

Specific Features: _____



▲ = Specify Finish



DELTA[®]

TUB AND SHOWER FAUCET TRIM

- Leland™ Bath Series
- Tub Only (T14178-LHP Series)
- Shower Only (T14278-LHP Series)
- Tub/Shower (T14478-LHP Series)

STANDARD SPECIFICATIONS:

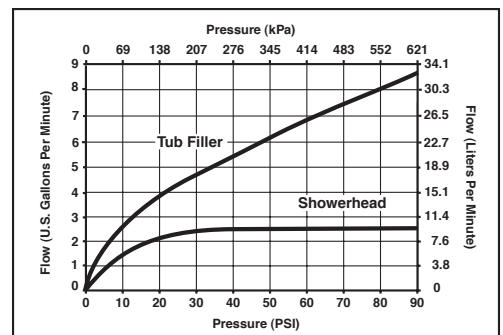
- Monitor® 14 Series pressure balanced bath mixing valve with Scald-Guard®.
- Maintains a balanced pressure of hot and cold water even when a valve is turned on or off elsewhere in the system.
- For use with MultiChoice™ Universal rough valve body. (R10000 Series)
- Back-to-back installation capability.
- Solid brass fabricated body.
- Temperature only controlled with handle.
- Field adjustable to limit handle rotation into hot water zone.
- 120° maximum handle rotation.
- All parts replaceable from the front of the valve.
- LHP - less handle program - see recommended handles below.

WARRANTY

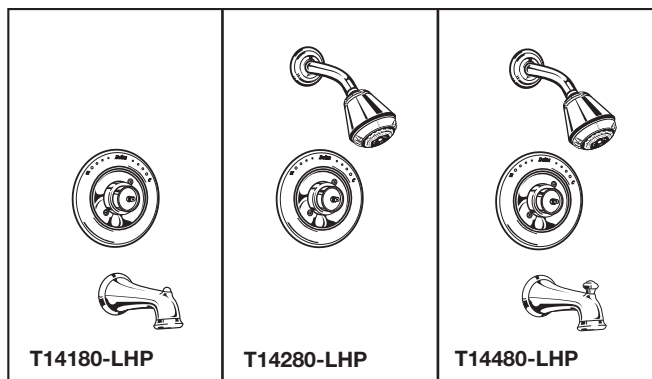
- Lifetime Faucet and Finish Limited Warranty to the original consumer purchaser to be free from defects in material and workmanship.
- 5 Year Limited Warranty for usage in all industrial, commercial and business applications.

COMPLIES WITH:

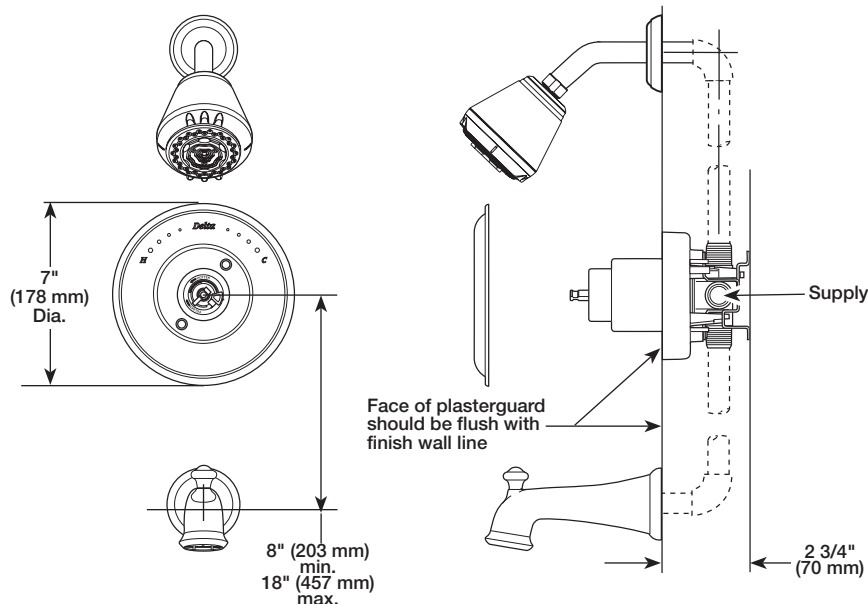
- ASME A112.18.1 / CSA B125.1
- ASSE 1016
- Indicates ADA compliance to ICC/ANSI A117.1



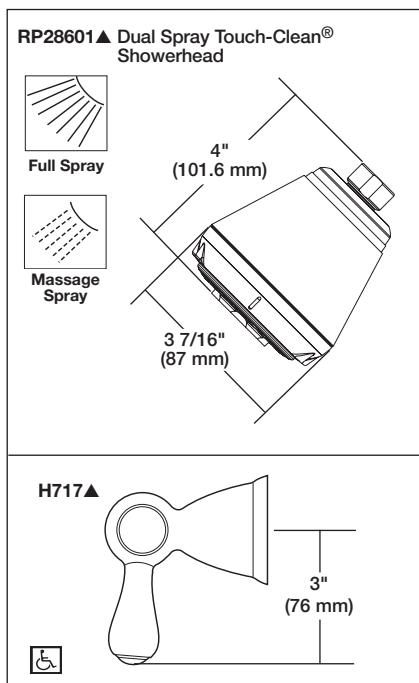
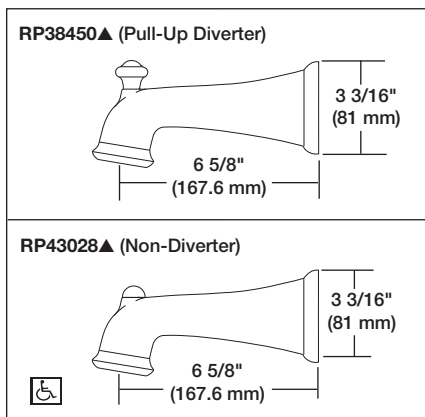
Delta reserves the right (1) to make changes in specifications and materials, and (2) to change or discontinue models, both without notice or obligation. Dimensions are for reference only. See current full-line price book or www.specselect.com for finish options and product availability.



Submitted Model No.: _____
 Specific Features: _____



▲ = Specify Finish



TUB AND SHOWER FAUCET TRIM

- Botanical® Bath Collection
- Tub Only (T14180 Series)
- Shower Only (T14280 Series)
- Tub/Shower (T14480 Series)

STANDARD SPECIFICATIONS:

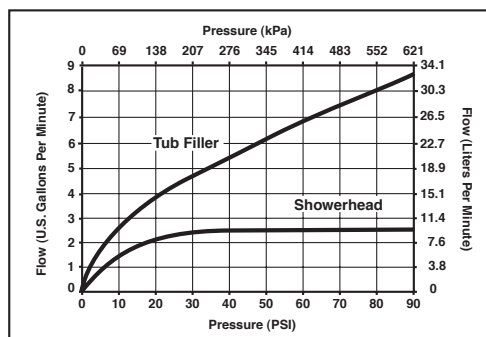
- Monitor® 14 Series pressure balanced bath mixing valve with Scald-Guard®.
- Maintains a balanced pressure of hot and cold water even when a valve is turned on or off elsewhere in the system.
- For use with MultiChoice™ Universal rough valve body. (R10000 Series)
- Back-to-back installation capability.
- Solid brass fabricated body.
- Temperature only controlled with handle.
- Field adjustable to limit handle rotation into hot water zone.
- 120° maximum handle rotation.
- All parts replaceable from the front of the valve.
- LHP - less handle program - see recommended handle below.

WARRANTY

- Lifetime Faucet and Finish Limited Warranty to the original consumer purchaser to be free from defects in material and workmanship.
- 5 Year Limited Warranty for usage in all industrial, commercial and business applications.

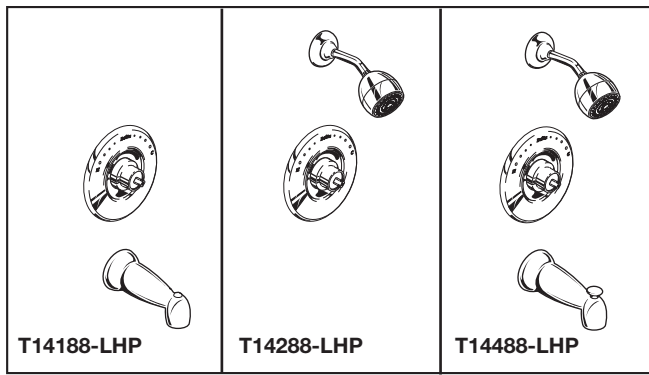
COMPLIES WITH:

- ASME A112.18.1 / CSA B125.1
- ASSE 1016
- Indicates ADA compliance to ICC/ANSI A117.1



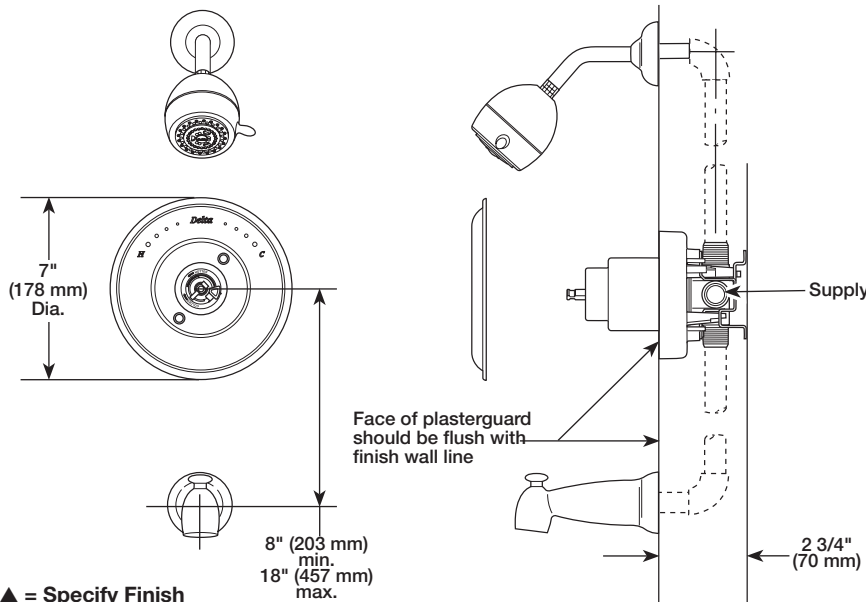
Delta reserves the right (1) to make changes in specifications and materials, and (2) to change or discontinue models, both without notice or obligation. Dimensions are for reference only. See current full-line price book or www.specselect.com for finish options and product availability.

55 E. 111th Street, Indianapolis, IN 46280
 395 Matheson Blvd. E., Mississauga, ON L4Z 2H2
 © 2007 Masco Corporation of Indiana

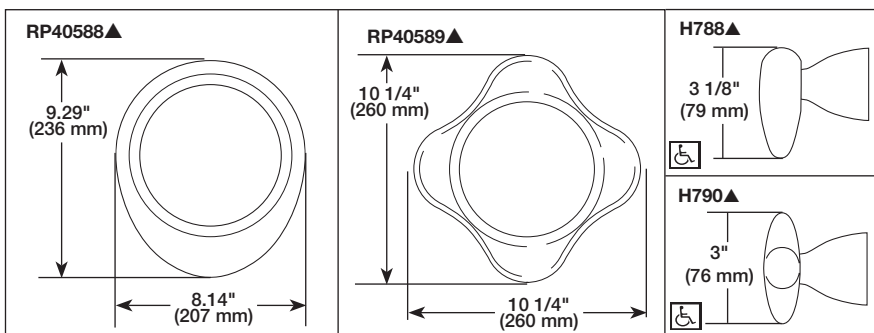
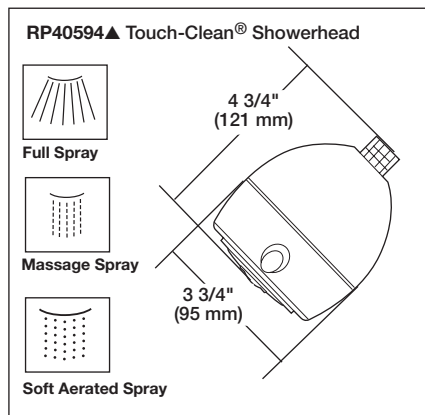
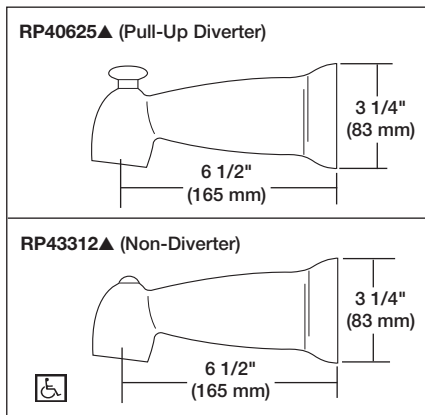


Submitted Model No.: _____

Specific Features: _____



▲ = Specify Finish



Delta reserves the right (1) to make changes in specifications and materials, and (2) to change or discontinue models, both without notice or obligation. Dimensions are for reference only. See current full-line price book or www.specselect.com for finish options and product availability.

DSP-B-T14188-LHP Rev. A



TUB AND SHOWER FAUCET TRIM

- The Michael Graves Collection™
- Tub Only (T14188 Series)
- Shower Only (T14288 Series)
- Tub/Shower (T14488 Series)

STANDARD SPECIFICATIONS:

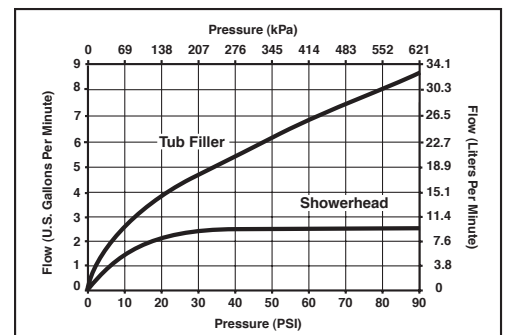
- Monitor® 14 Series pressure balanced bath mixing valve with Scald-Guard®.
- Maintains a balanced pressure of hot and cold water even when a valve is turned on or off elsewhere in the system.
- For use with MultiChoice™ Universal rough valve body. (R10000 Series)
- Back-to-back installation capability.
- Solid brass fabricated body.
- Temperature only controlled with handle.
- Field adjustable to limit handle rotation into hot water zone.
- 120° maximum handle rotation.
- All parts replaceable from the front of the valve.
- Decorative trim ring available as RP40588 (Teardrop) or RP40589 (Star).
- LHP - less handle program - see recommended handle below.

WARRANTY

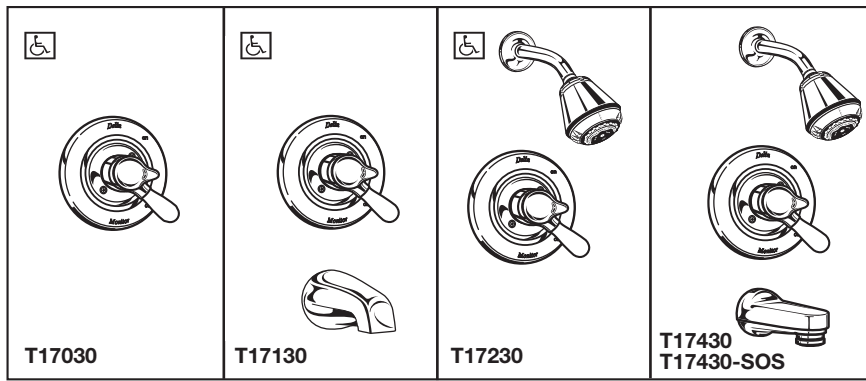
- Lifetime Faucet and Finish Limited Warranty to the original consumer purchaser to be free from defects in material and workmanship.
- 5 Year Limited Warranty for usage in all industrial, commercial and business applications.

COMPLIES WITH:

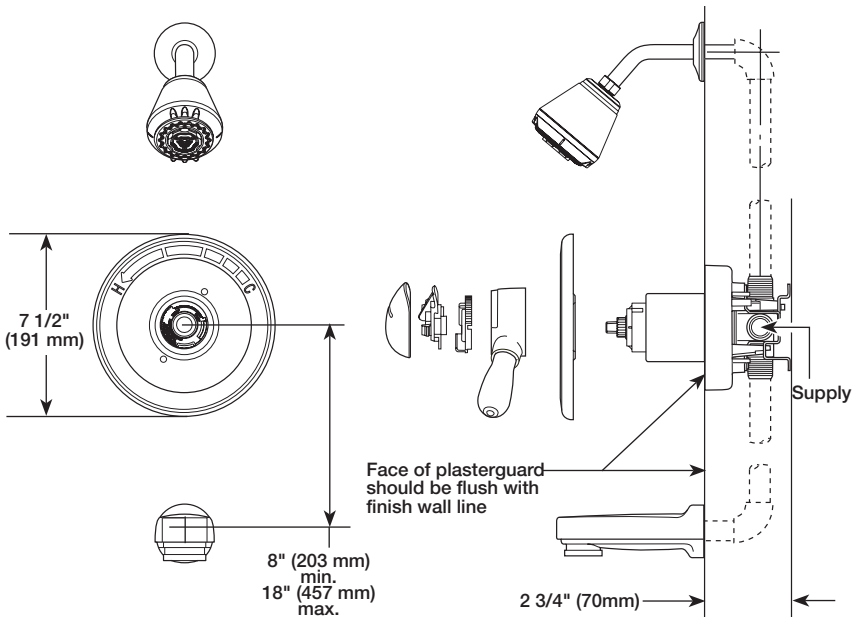
- ASME A112.18.1 / CSA B125.1
- ASSE 1016
- Indicates ADA compliance to ICC/ANSI A117.1



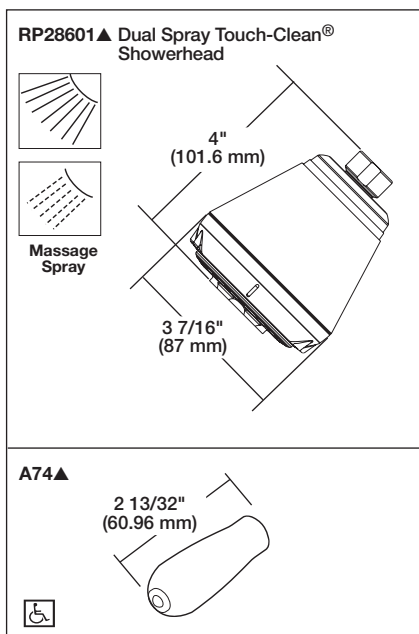
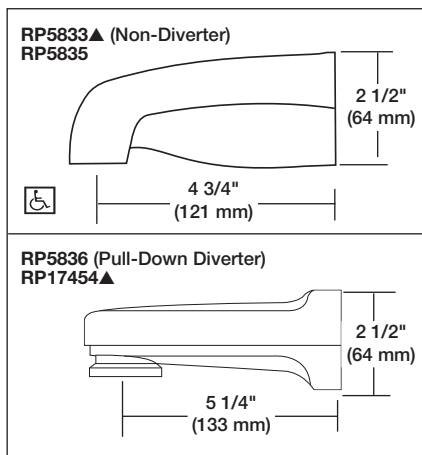
55 E. 111th Street, Indianapolis, IN 46280
395 Matheson Blvd. E., Mississauga, ON L4Z 2H2
© 2007 Masco Corporation of Indiana



Submitted Model No.: _____
 Specific Features: _____



▲ = Specify Finish



Delta reserves the right (1) to make changes in specifications and materials, and (2) to change or discontinue models, both without notice or obligation. Dimensions are for reference only. See current full-line price book or www.specselect.com for finish options and product availability.

DELTA[®]

TUB AND SHOWER FAUCET TRIM

- Innovations[®] Collection
- Valve Only (T17030 Series)
- Tub Only (T17130 Series)
- Shower Only (T17230 Series)
- Tub/Shower (T17430 Series)

STANDARD SPECIFICATIONS:

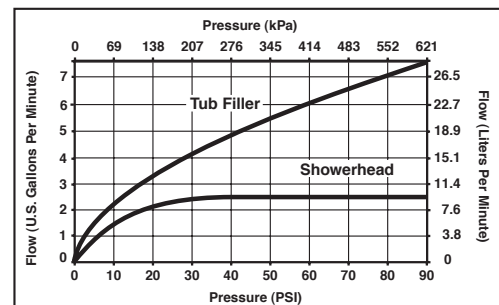
- Monitor[®] 17 Series pressure balanced bath mixing valve with Scald-Guard[®].
- Maintains a balanced pressure of hot and cold water even when a valve is turned on or off elsewhere in the system.
- For use with MultiChoice[™] Universal rough valve body. (R10000 Series)
- Back-to-back installation capability.
- Solid brass fabricated body.
- Lever volume control handle; temperature adjustment dial.
- Field adjustable to limit handle rotation into hot water zone.
- Maximum dial rotation adjustable between 90° and 180°.
- All parts replaceable from the front of the valve.
- Models with "SOS" suffix supplied with slip-on spout for 1/2" C.W.T.

WARRANTY

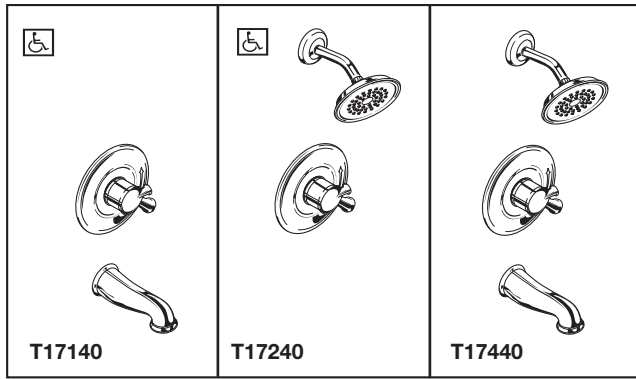
- Lifetime Faucet and Finish Limited Warranty to the original consumer purchaser to be free from defects in material and workmanship.
- 5 Year Limited Warranty for usage in all industrial, commercial and business applications.

COMPLIES WITH:

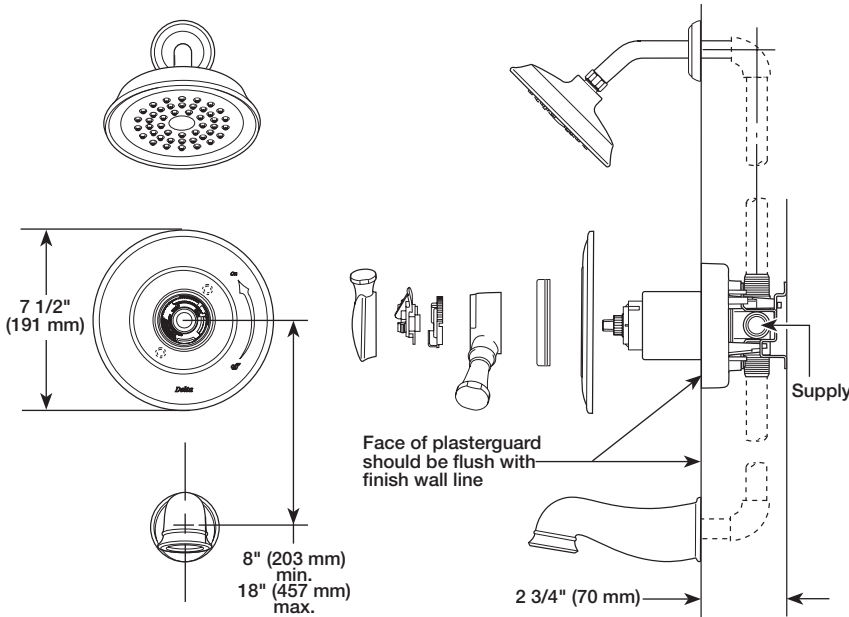
- ASME A112.18.1 / CSA B125.1
- ASSE 1016
- Indicates ADA compliance to ICC/ANSI A117.1



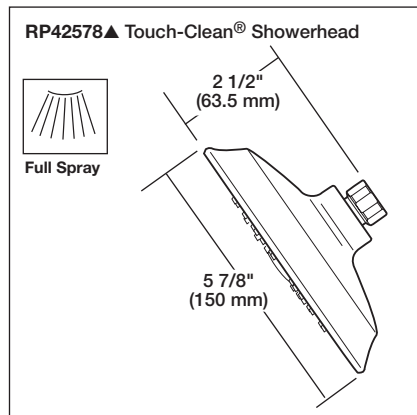
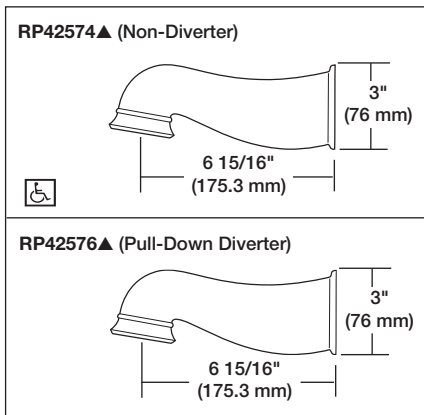
55 E. 111th Street, Indianapolis, IN 46280
 395 Matheson Blvd. E., Mississauga, ON L4Z 2H2
 © 2007 Masco Corporation of Indiana



Submitted Model No.: _____
 Specific Features: _____



▲ = Specify Finish



DELTA[®]

TUB AND SHOWER FAUCET TRIM

- Lockwood™ Collection
- Tub Only (T17140 Series)
- Shower Only (T17240 Series)
- Tub/Shower (T17440 Series)

STANDARD SPECIFICATIONS:

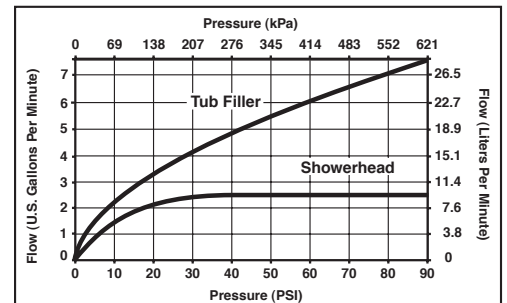
- Monitor® 17 Series pressure balanced bath mixing valve with Scald-Guard®.
- Maintains a balanced pressure of hot and cold water even when a valve is turned on or off elsewhere in the system.
- For use with MultiChoice™ Universal rough valve body. (R10000 Series)
- Back-to-back installation capability.
- Solid brass fabricated body.
- Lever volume control handle; temperature adjustment dial.
- Field adjustable to limit handle rotation into hot water zone.
- Maximum dial rotation adjustable between 90° and 180°.
- All parts replaceable from the front of the valve.

WARRANTY

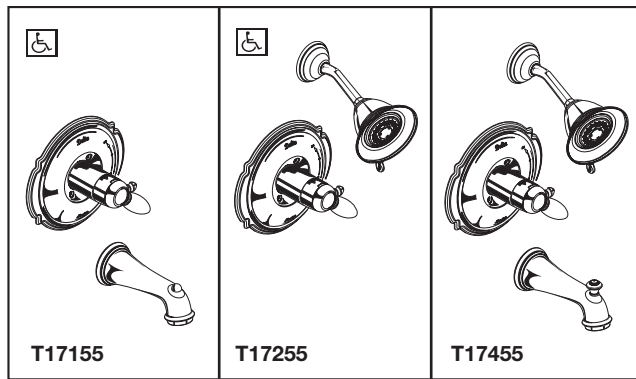
- Lifetime Faucet and Finish Limited Warranty to the original consumer purchaser to be free from defects in material and workmanship.
- 5 Year Limited Warranty for usage in all industrial, commercial and business applications.

COMPLIES WITH:

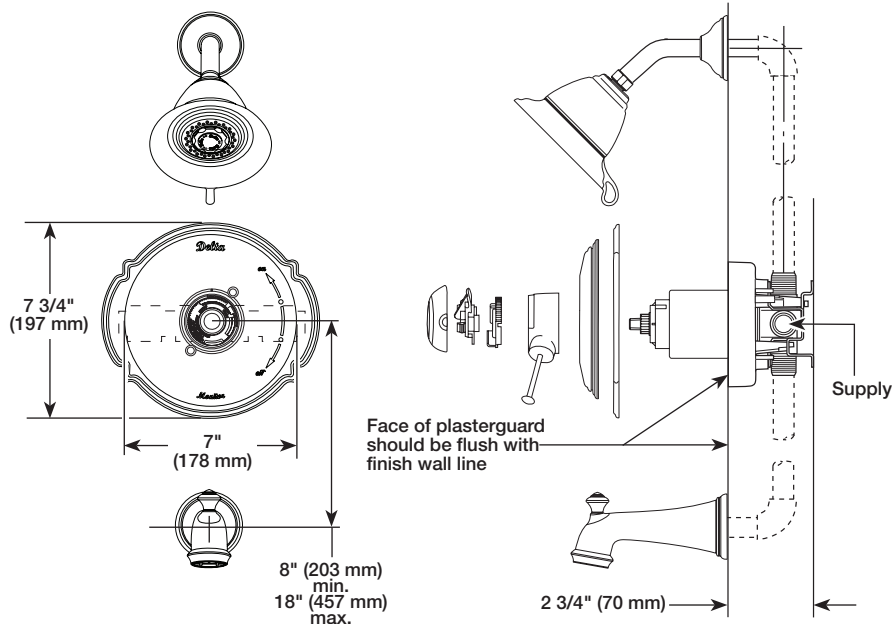
- ASME A112.18.1 / CSA B125.1
- ASSE 1016
- Indicates ADA compliance to ICC/ANSI A117.1



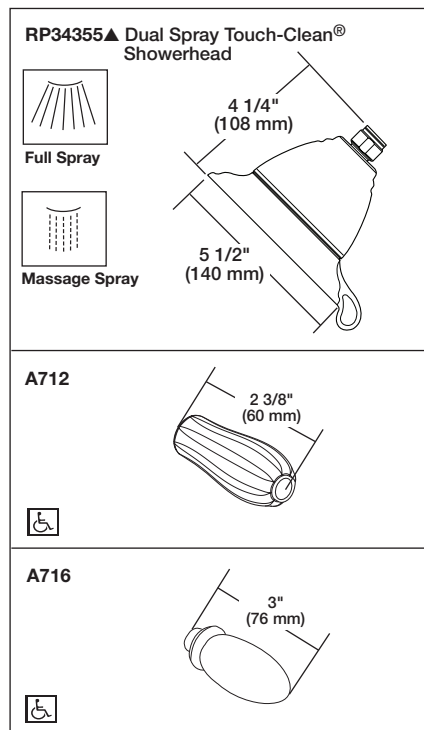
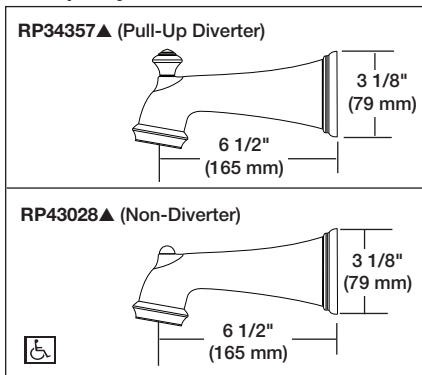
Delta reserves the right (1) to make changes in specifications and materials, and (2) to change or discontinue models, both without notice or obligation. Dimensions are for reference only. See current full-line price book or www.specselect.com for finish options and product availability.



Submitted Model No.: _____
 Specific Features: _____



▲ = Specify Finish



DELTA[®] **TUB AND SHOWER FAUCET TRIM**

- Victorian[®] Collection
- Tub Only (T17155 Series)
- Shower Only (T17255 Series)
- Tub/Shower (T17455 Series)

STANDARD SPECIFICATIONS:

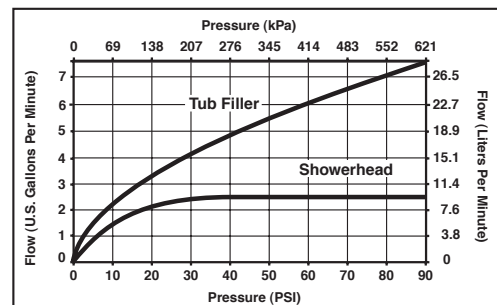
- Monitor[®] 17 Series pressure balanced bath mixing valve with Scald-Guard[®].
- Maintains a balanced pressure of hot and cold water even when a valve is turned on or off elsewhere in the system.
- For use with MultiChoice[™] Universal rough valve body. (R10000 Series)
- Back-to-back installation capability.
- Solid brass fabricated body.
- Lever volume control handle; temperature adjustment dial.
- Field adjustable to limit handle rotation into hot water zone.
- Maximum dial rotation adjustable between 90° and 180°.
- All parts replaceable from the front of the valve.
- Includes decorative trim ring (RP34359).

WARRANTY

- Lifetime Faucet and Finish Limited Warranty to the original consumer purchaser to be free from defects in material and workmanship.
- 5 Year Limited Warranty for usage in all industrial, commercial and business applications.

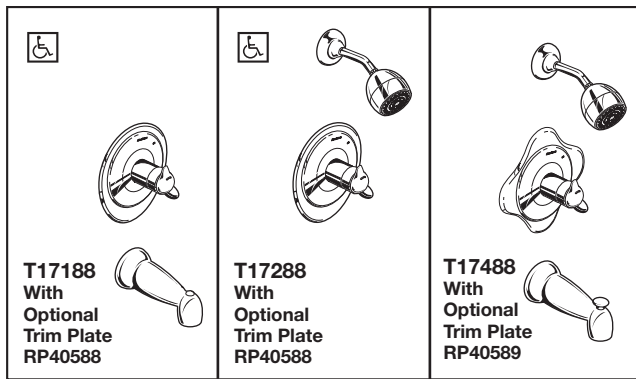
COMPLIES WITH:

- ASME A112.18.1 / CSA B125.1
- ASSE 1016
- Indicates ADA compliance to ICC/ANSI A117.1



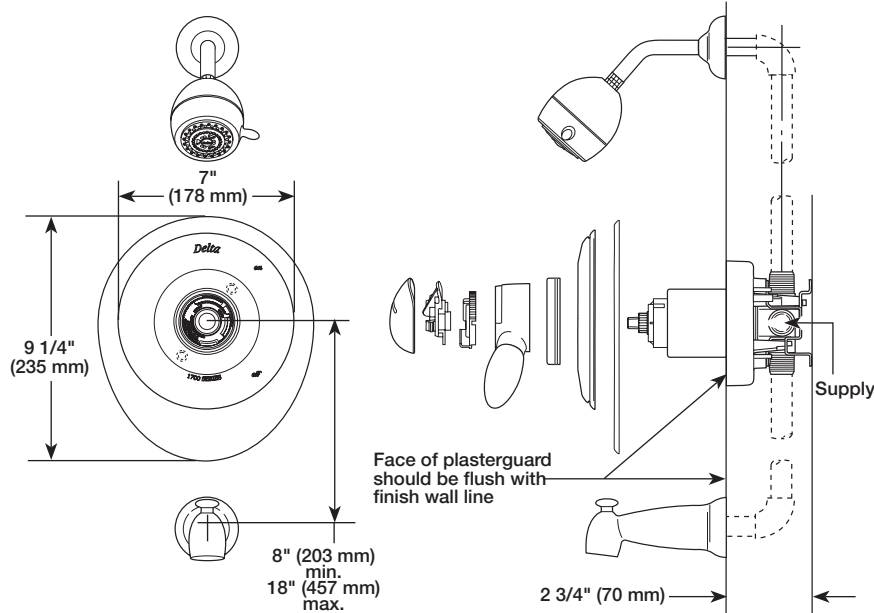
Delta reserves the right (1) to make changes in specifications and materials, and (2) to change or discontinue models, both without notice or obligation. Dimensions are for reference only. See current full-line price book or www.specselect.com for finish options and product availability.

55 E. 111th Street, Indianapolis, IN 46280
 395 Matheson Blvd. E., Mississauga, ON L4Z 2H2
 © 2007 Masco Corporation of Indiana

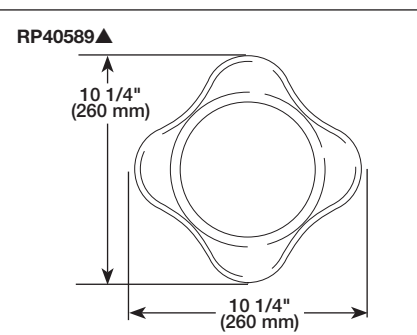
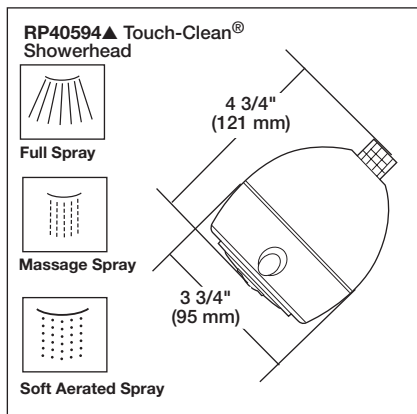
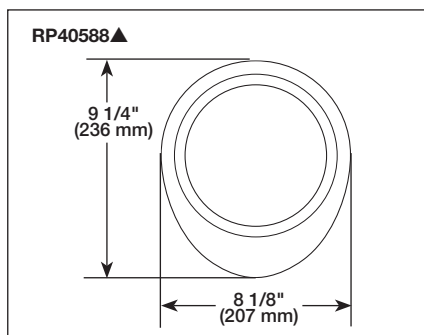
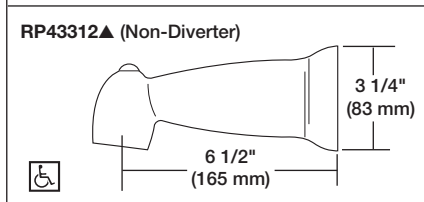
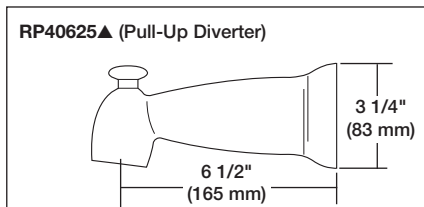


Submitted Model No.: _____

Specific Features: _____



▲ = Specify Finish



Delta reserves the right (1) to make changes in specifications and materials, and (2) to change or discontinue models, both without notice or obligation. Dimensions are for reference only. See current full-line price book or www.specselect.com for finish options and product availability.

DSP-B-T17188 Rev. A

DELTA®

TUB AND SHOWER FAUCET TRIM

- The Michael Graves Collection™
- Tub Only (T17188 Series)
- Shower Only (T17288 Series)
- Tub/Shower (T17488 Series)

STANDARD SPECIFICATIONS:

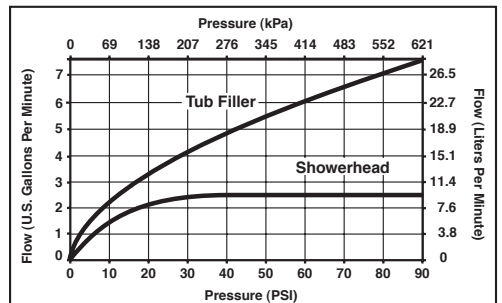
- Monitor® 17 Series pressure balanced bath mixing valve with Scald-Guard®.
- Maintains a balanced pressure of hot and cold water even when a valve is turned on or off elsewhere in the system.
- For use with MultiChoice™ Universal rough valve body. (R10000 Series)
- Back-to-back installation capability.
- Solid brass fabricated body.
- Lever volume control handle; temperature adjustment dial.
- Field adjustable to limit handle rotation into hot water zone.
- Maximum dial rotation adjustable between 90° and 180°.
- All parts replaceable from the front of the valve.
- Decorative trim ring available as RP40588 (Teardrop) or RP40589 (Star).

WARRANTY

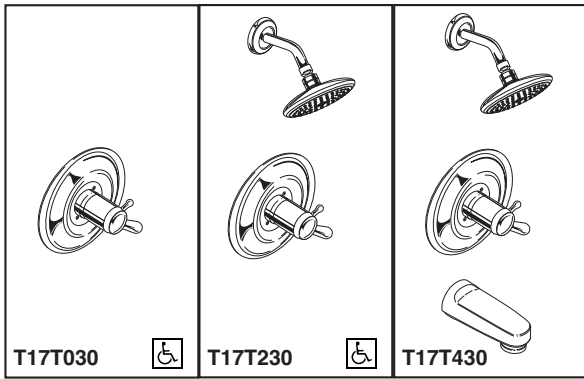
- Lifetime Faucet and Finish Limited Warranty to the original consumer purchaser to be free from defects in material and workmanship.
- 5 Year Limited Warranty for usage in all industrial, commercial and business applications.

COMPLIES WITH:

- ASME A112.18.1 / CSA B125.1
- ASSE 1016
- Indicates ADA compliance to ICC/ANSI A117.1

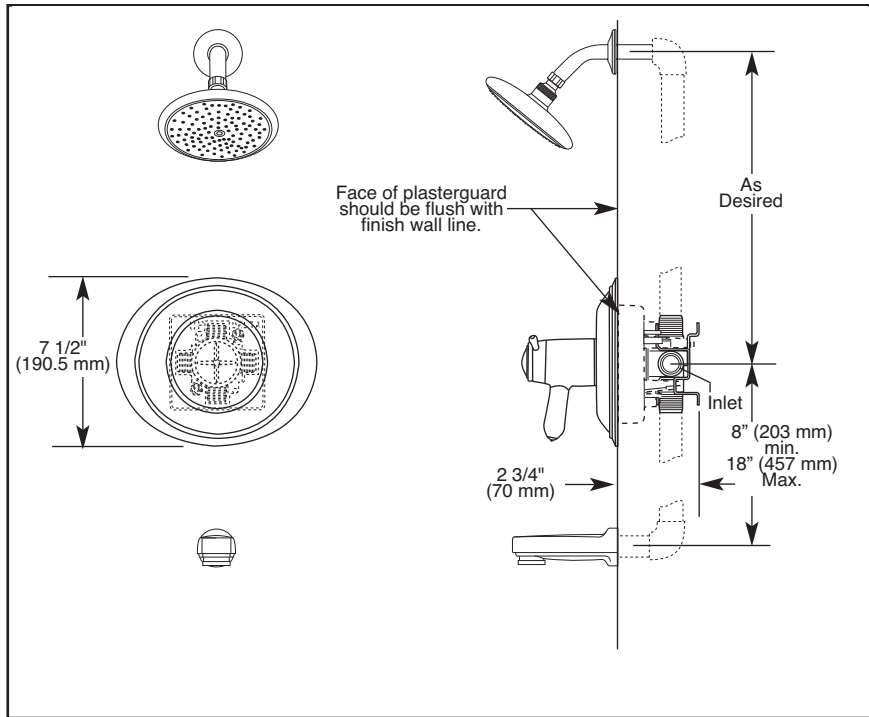


55 E. 111th Street, Indianapolis, IN 46280
395 Matheson Blvd. E., Mississauga, ON L4Z 2H2
© 2007 Masco Corporation of Indiana



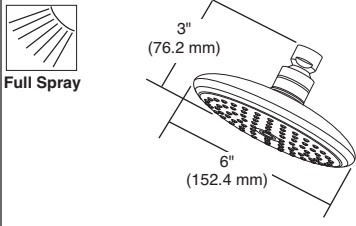
Submitted Model No.: _____

Specific Features: _____

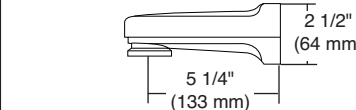


▲ Designate proper finish suffix

RP47197▲ Air Induced Raincan Showerhead



RP5836 (Pull-Down Diverter)
RP17454▲



TUB AND SHOWER JETTED SHOWER™ TRIM

- Innovations® Collection
- TempAssure® Thermostatic
- Valve Only (T17T030)
- Shower Only (T17T230)
- Tub/Shower (T17T430)

STANDARD SPECIFICATIONS:

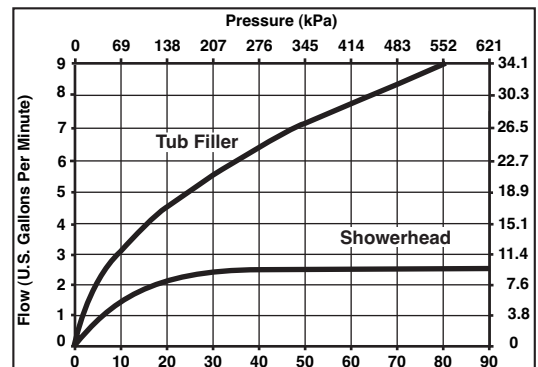
- TempAssure® 17T thermostatic valve cartridge.
- Thermostatic wax element maintains the outlet temperature to $\pm 3.6^{\circ}\text{F}$.
- Must also order R1 0000-UNBX rough valve body.
- Back to back installation capability.
- Lever volume control handle; temperature adjustment dial.
- Graphics indicate hot/cold temperature adjustment.
- Field adjustable to limit rotation into hot water zone.
- All parts are replaceable from the front of the valve.
- Adjusts for up to 1" wall thickness.

WARRANTY

- Lifetime Faucet and Finish Limited Warranty to the original consumer purchaser to be free from defects in material and workmanship.
- 5 Year Limited Warranty for usage in all industrial, commercial and business applications.

COMPLETE VALVE COMPLIES WITH:

- ASME A112.18.1 / CSA B125.1
- ASSE 1016
- Indicates ADA compliance to ICC/ANSI A117.1
- CSA Certified
- IAPMO Listed

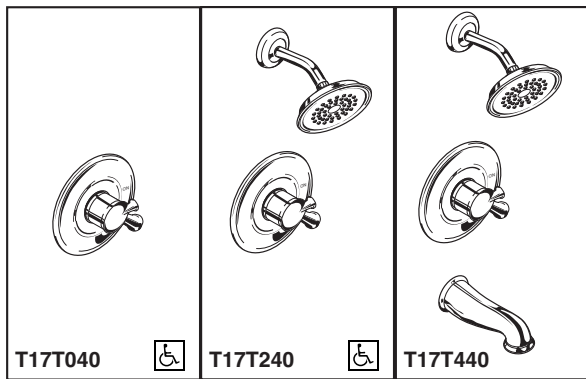


Delta reserves the right (1) to make changes in specifications and materials, and (2) to change or discontinue models, both without notice or obligation. Dimensions are for reference only. See current full-line price book or www.specselect.com for finish options and product availability.

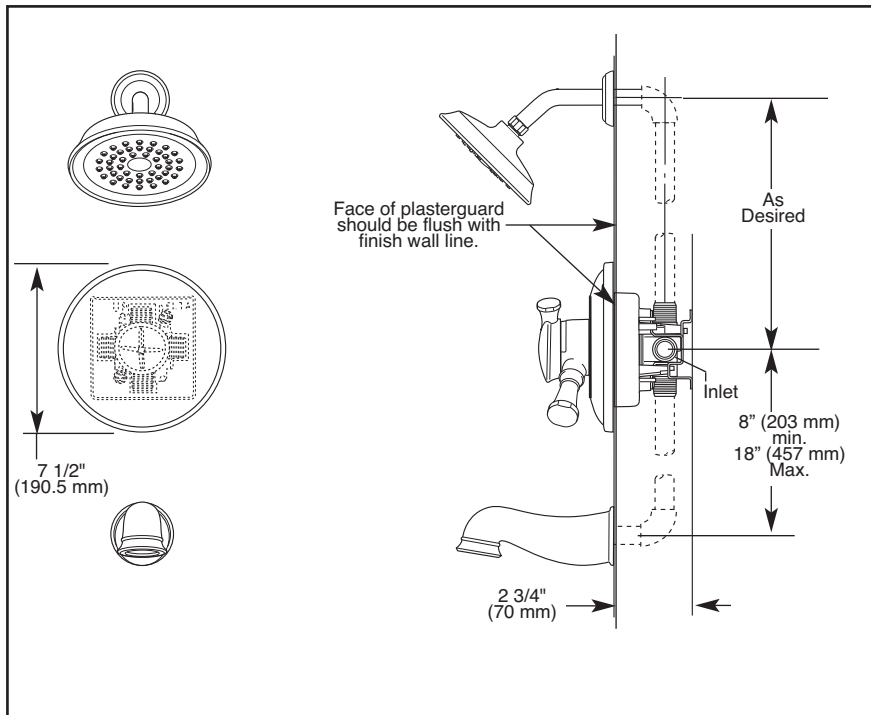
2.D.28

55 E. 111th Street, Indianapolis, Indiana 46280
395 Matheson Blvd. E., Mississauga, ON L4Z 2H2
© 2007 Masco Corporation of Indiana

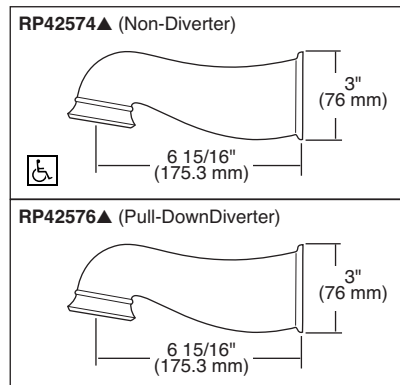
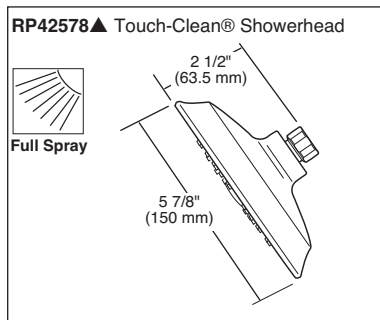
DSP-B-T17T030 Rev. A



Submitted Model No.: _____
 Specific Features: _____



▲ Designate proper finish suffix



TUB AND SHOWER TRIM

- Lockwood™ Collection
- TempAssure™ Thermostatic
- Valve Only (T17T040)
- Shower Only (T17T240)
- Tub/Shower (T17T440)

STANDARD SPECIFICATIONS:

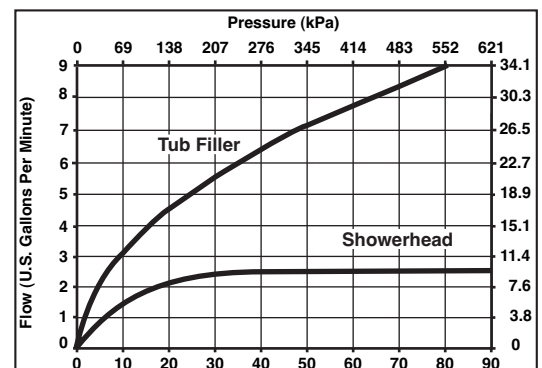
- TempAssure™ 17T thermostatic valve cartridge.
- Thermostatic wax element maintains the outlet temperature to $\pm 3.6^{\circ}\text{F}$.
- Must also order R10000-UNBX rough valve body.
- Back to back installation capability.
- Lever volume control handle; temperature adjustment dial.
- Graphics indicate hot/cold temperature adjustment.
- Field adjustable to limit rotation into hot water zone.
- All parts are replaceable from the front of the valve.
- Adjusts for up to 1" wall thickness.

WARRANTY

- Lifetime Faucet and Finish Limited Warranty to the original consumer purchaser to be free from defects in material and workmanship.
- 5 Year Limited Warranty for usage in all industrial, commercial and business applications.

COMPLETE VALVE COMPLIES WITH:

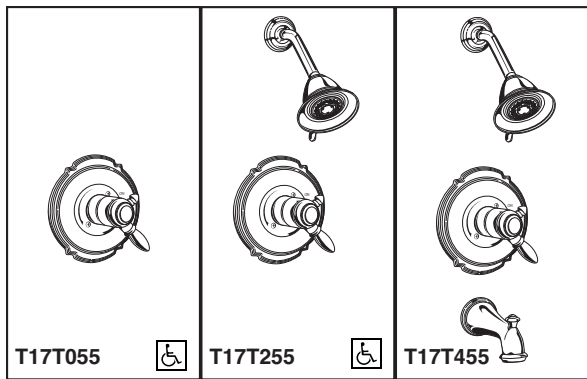
- ASME A112.18.1 / CSA B125.1
- ASSE 1016
- Indicates ADA compliance to ICC/ANSI A117.1
- CSA Certified
- IAPMO Listed



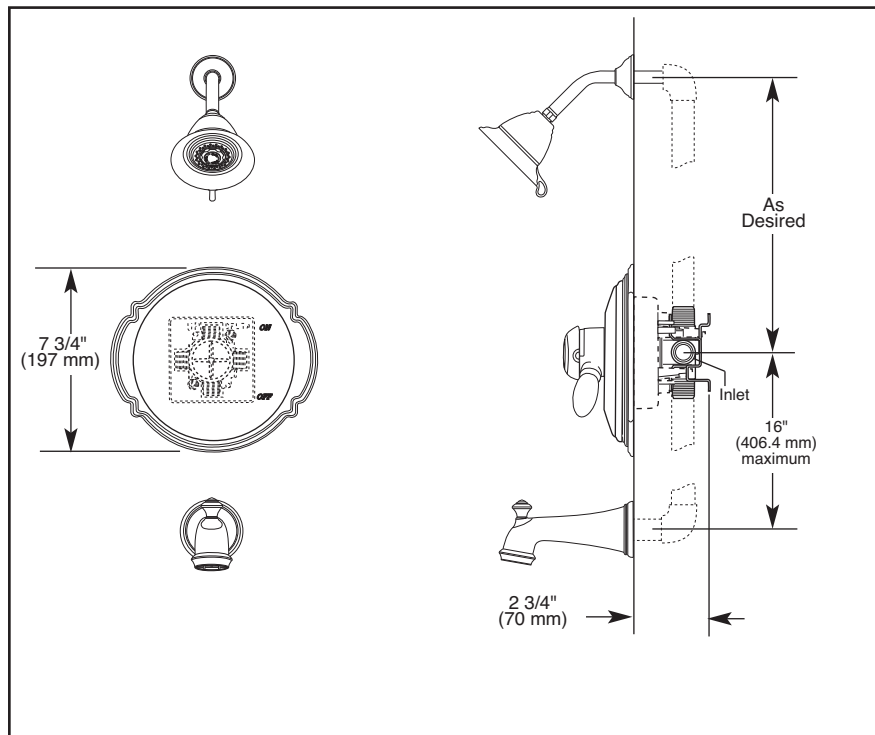
Delta reserves the right (1) to make changes in specifications and materials, and (2) to change or discontinue models, both without notice or obligation. Dimensions are for reference only. See current full-line price book or www.specselect.com for finish options and product availability.

DSP-B-T17T040 Rev. A

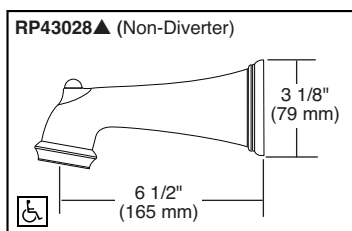
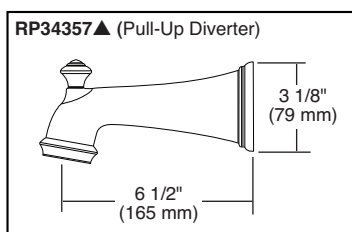
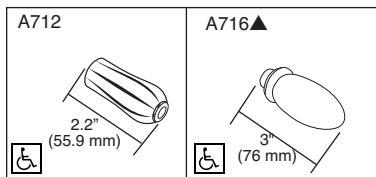
55 E. 111th Street, Indianapolis, Indiana 46280
 395 Matheson Blvd. E., Mississauga, ON L4Z 2H2
 © 2007 Masco Corporation of Indiana



Submitted Model No.: _____
 Specific Features: _____



▲ Designate proper finish suffix



TUB AND SHOWER TRIM

- Victorian® Collection
- TempAssure™ Thermostatic
- Valve Only (T17T055)
- Shower Only (T17T255)
- Tub/Shower (T17T455)

STANDARD SPECIFICATIONS:

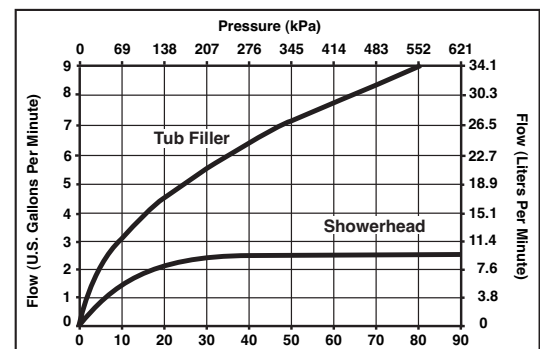
- TempAssure™ 17T thermostatic valve cartridge.
- Thermostatic wax element maintains the outlet temperature to $\pm 3.6^{\circ}\text{F}$.
- Must also order R10000-UNBX rough valve body.
- Back to back installation capability.
- Lever volume control handle; temperature adjustment dial.
- Graphics indicate hot/cold temperature adjustment.
- Field adjustable to limit handle rotation into hot water zone.
- All parts are replaceable from the front of the valve.
- Adjusts for up to 1" wall thickness.

WARRANTY

- Lifetime Faucet and Finish Limited Warranty to the original consumer purchaser to be free from defects in material and workmanship.
- 5 Year Limited Warranty for usage in all industrial, commercial and business applications.

COMPLETE VALVE COMPLIES WITH:

- ASME A112.18.1 / CSA B125.1
- ASSE 1016
- Indicates ADA compliance to ICC/ANSI A117.1
- CSA Certified
- IAPMO Listed

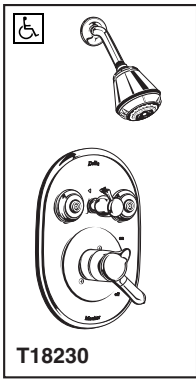


Delta reserves the right (1) to make changes in specifications and materials, and (2) to change or discontinue models, both without notice or obligation. Dimensions are for reference only. See current full-line price book or www.specselect.com for finish options and product availability.

2.D.30

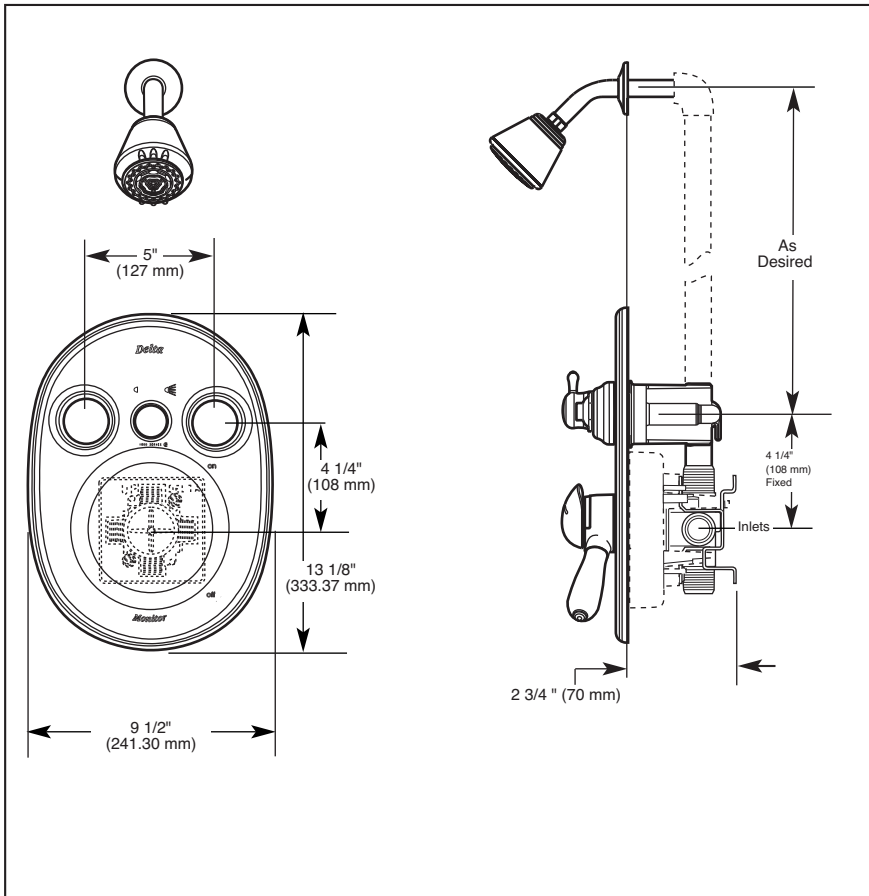
55 E. 111th Street, Indianapolis, Indiana 46280
 395 Matheson Blvd. E., Mississauga, ON L4Z 2H2
 © 2007 Masco Corporation of Indiana

DSP-B-T17T055 Rev. A

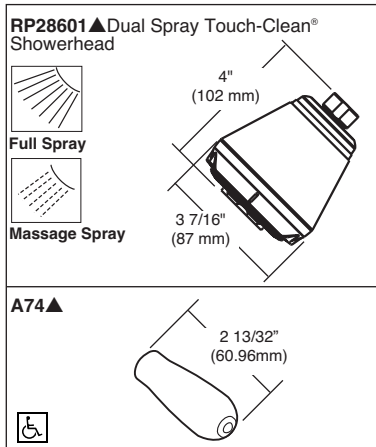


Submitted Model No.: _____

Specific Features: _____



▲ Designate proper finish suffix



Delta reserves the right (1) to make changes in specifications and materials, and (2) to change or discontinue models, both without notice or obligation. Dimensions are for reference only. See current full-line price book or www.specselect.com for finish options and product availability.

DSP-B-T18230 Rev. A

DELTA

TUB AND SHOWER JETTED SHOWER™ TRIM

- Innovations® Collection
- Shower Only

STANDARD SPECIFICATIONS:

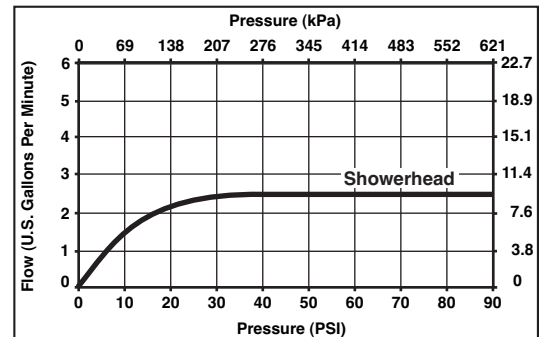
- Monitor® 18 Series pressure balanced bath mixing valve with Scald-Guard®.
- Maintains a balanced pressure of hot and cold water even when a valve is turned on or off elsewhere in the system.
- Must also order R18222 Jetted Shower XO™ or R18224 Jetted Shower™ rough valve body.
- Back to back installation capability.
- Lever volume control handle; temperature adjustment dial.
- Red and Blue graphics indicate hot/cold temperature adjustment.
- Field adjustable to limit handle rotation into hot water zone.
- Maximum dial rotation adjustable between 90° and 180°.
- All parts are replaceable from the front of the valve.
- Adjusts for up to 1" wall thickness.

WARRANTY

- Lifetime Faucet and Finish Limited Warranty to the original consumer purchaser to be free from defects in material and workmanship.
- 5 Year Limited Warranty for usage in all industrial, commercial and business applications.

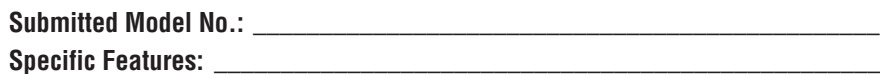
COMPLETE VALVE COMPLIES WITH:

- ASME A112.18.1 / CSA B125.1
- ASSE 1016
- Indicates ADA compliance to ICC/ANSI A117.1
- CSA Certified
- IAPMO Listed



DELTA
FAUCET COMPANY

55 E. 111th Street, Indianapolis, Indiana 46280
395 Matheson Blvd. E., Mississauga, ON L4Z 2H2
© 2007 Masco Corporation of Indiana



TUB AND SHOWER JETTED SHOWER™ TRIM

- Lockwood™ Collection
■ Shower Only

STANDARD SPECIFICATIONS:

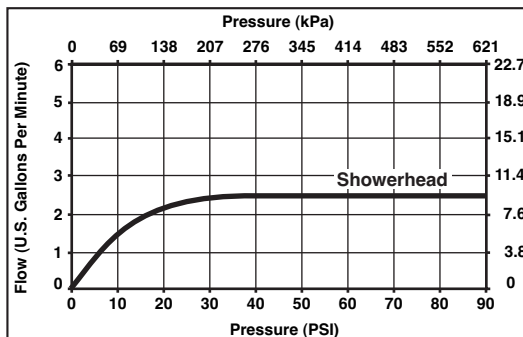
- Monitor® 18 Series pressure balanced bath mixing valve with Scald-Guard®.
- Maintains a balanced pressure of hot and cold water even when a valve is turned on or off elsewhere in the system.
- Must also order R18222 Jetted Shower XO™ or R18224 Jetted Shower™ rough valve body.
- Back to back installation capability.
- Lever volume control handle; temperature adjustment dial.
- Red and Blue graphics indicate hot/cold temperature adjustment.
- Field adjustable to limit handle rotation into hot water zone.
- Maximum dial rotation adjustable between 90° and 180°.
- All parts are replaceable from the front of the valve.
- Adjusts for up to 1" wall thickness.

WARRANTY

- Lifetime Faucet and Finish Limited Warranty to the original consumer purchaser to be free from defects in material and workmanship.
- 5 Year Limited Warranty for usage in all industrial, commercial and business applications.

COMPLETE VALVE COMPLIES WITH:

- ASME A112.18.1 / CSA B125.1
- ASSE 1016
-  Indicates ADA compliance to
ICC/ANSI A117.1
- CSA Certified
- IAPMO Listed

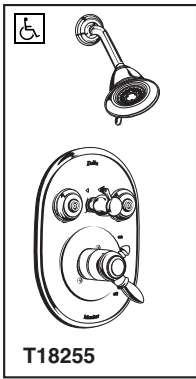


Delta reserves the right (1) to make changes in specifications and materials, and (2) to change or discontinue models, both without notice or obligation. Dimensions are for reference only. See current full-line price book or www.specselect.com for finish options and product availability.

2.D.32

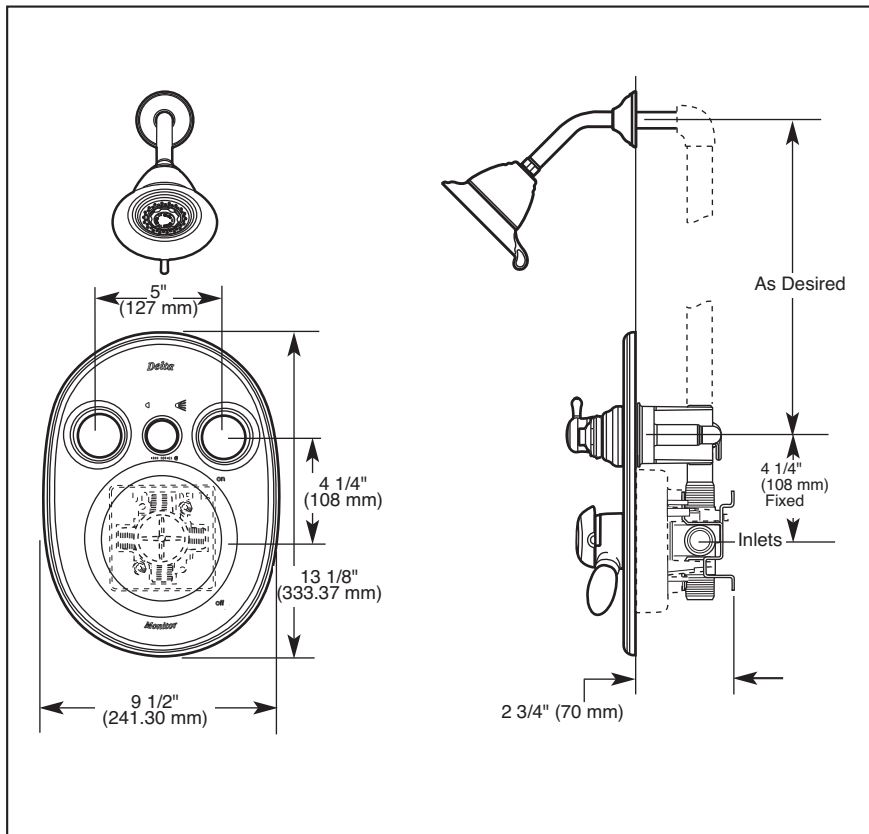
55 E. 111th Street, Indianapolis, Indiana 46280
395 Matheson Blvd. E., Mississauga, ON L4Z 2H2
© 2007 Masco Corporation of Indiana

DSP-B-T18240 Rev. A

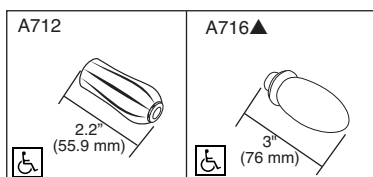


Submitted Model No.: _____

Specific Features: _____



▲ Designate proper finish suffix
† Designates the accent color on split finish models.



TUB AND SHOWER JETTED SHOWER™ TRIM

- Victorian® Collection
- Shower Only

STANDARD SPECIFICATIONS:

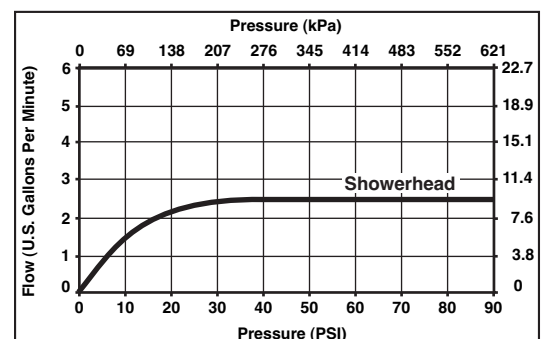
- Monitor® 18 Series pressure balanced bath mixing valve with Scald-Guard®.
- Maintains a balanced pressure of hot and cold water even when a valve is turned on or off elsewhere in the system.
- Must also order R18222 Jetted Shower XO™ or R18224 Jetted Shower™ rough valve body.
- Back to back installation capability.
- Lever volume control handle; temperature adjustment dial.
- Red and Blue graphics indicate hot/cold temperature adjustment.
- Field adjustable to limit handle rotation into hot water zone.
- All parts are replaceable from the front of the valve.
- Maximum dial rotation adjustable between 90° and 180°.
- Adjusts for up to 1" wall thickness.

WARRANTY

- Lifetime Faucet and Finish Limited Warranty to the original consumer purchaser to be free from defects in material and workmanship.
- 5 Year Limited Warranty for usage in all industrial, commercial and business applications.

COMPLETE VALVE COMPLIES WITH:

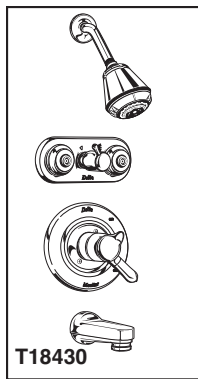
- ASME A112.18.1 / CSA B125.1
- ASSE 1016
- Indicates ADA compliance to ICC/ANSI A117.1
- CSA Certified
- IAPMO Listed



55 E. 111th Street, Indianapolis, Indiana 46280
395 Matheson Blvd. E., Mississauga, ON L4Z 2H2
© 2007 Masco Corporation of Indiana

Delta reserves the right (1) to make changes in specifications and materials, and (2) to change or discontinue models, both without notice or obligation. Dimensions are for reference only. See current full-line price book or www.specselect.com for finish options and product availability.

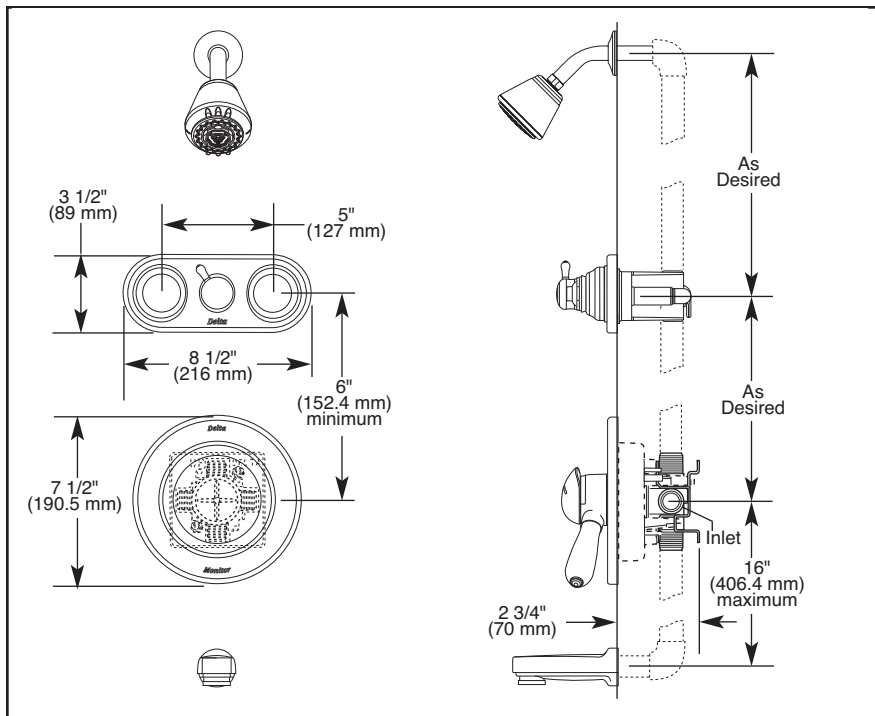
DSP-B-T18255 Rev. A



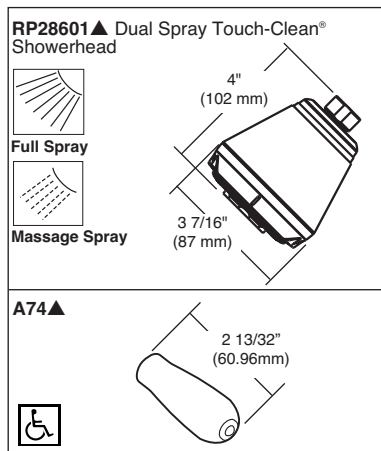
T18430

Submitted Model No.: _____

Specific Features: _____



▲ Designate proper finish suffix



TUB AND SHOWER JETTED SHOWER™ TRIM

■ Innovations® Collection

■ Tub/Shower

STANDARD SPECIFICATIONS:

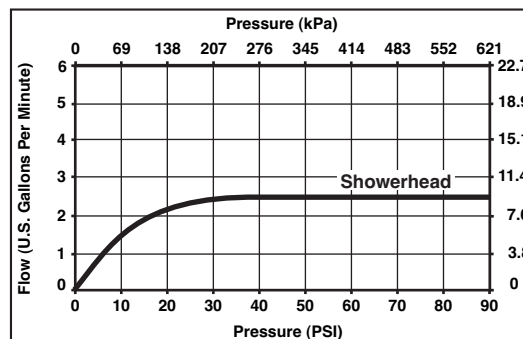
- Monitor® 18 Series pressure balanced bath mixing valve with Scald-Guard®.
- Maintains a balanced pressure of hot and cold water even when a valve is turned on or off elsewhere in the system.
- Must also order R18442 Jetted Shower XO™ or R18448 Jetted Shower™ tub/shower rough valve body.
- Back to back installation capability.
- Lever volume control handle; temperature adjustment dial.
- Red and Blue graphics indicate hot/cold temperature adjustment.
- Field adjustable to limit handle rotation into hot water zone.
- Maximum dial rotation adjustable between 90° and 180°.
- All parts are replaceable from the front of the valve.
- Adjusts for up to 1" wall thickness.

WARRANTY

- Lifetime Faucet and Finish Limited Warranty to the original consumer purchaser to be free from defects in material and workmanship.
- 5 Year Limited Warranty for usage in all industrial, commercial and business applications.

COMPLETE VALVE COMPLIES WITH:

- ASME A112.18.1 / CSA B125.1
- ASSE 1016
- Indicates ADA compliance to ICC/ANSI A117.1
- CSA Certified
- IAPMO Listed

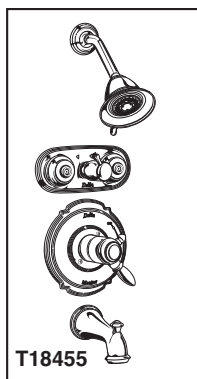


Delta reserves the right (1) to make changes in specifications and materials, and (2) to change or discontinue models, both without notice or obligation. Dimensions are for reference only. See current full-line price book or www.specselect.com for finish options and product availability.

2.D.34

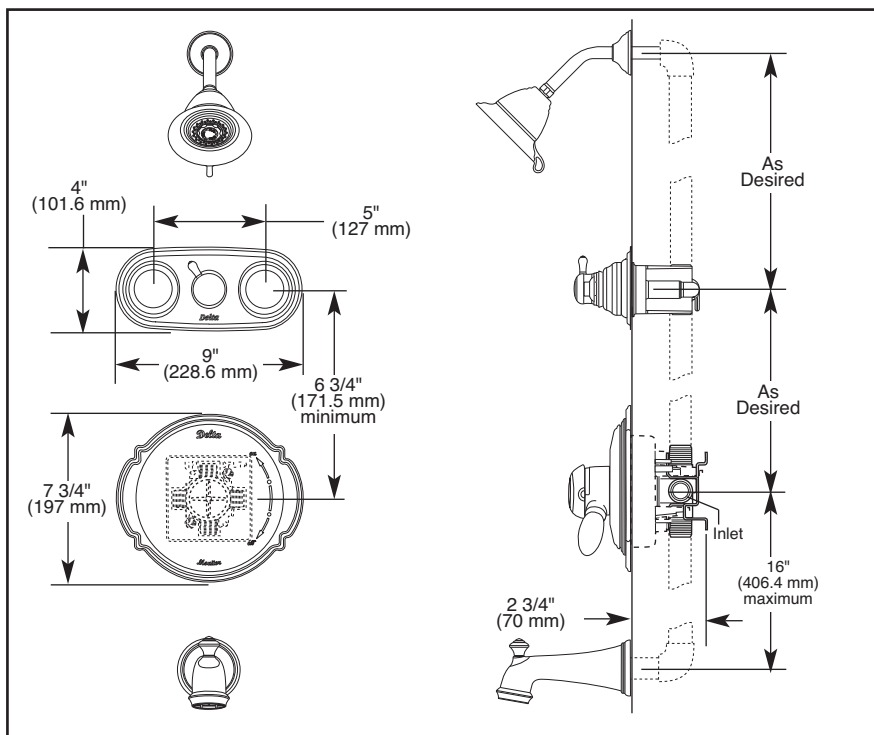
55 E. 111th Street, Indianapolis, Indiana 46280
395 Matheson Blvd. E., Mississauga, ON L4Z 2H2
© 2007 Masco Corporation of Indiana

DSP-B-T18430 Rev. A

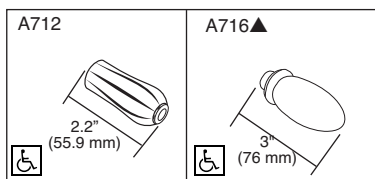


Submitted Model No.: _____

Specific Features: _____



▲ Designate proper finish suffix



TUB AND SHOWER JETTED SHOWER™ TRIM

- Victorian® Collection
- Tub/Shower

STANDARD SPECIFICATIONS:

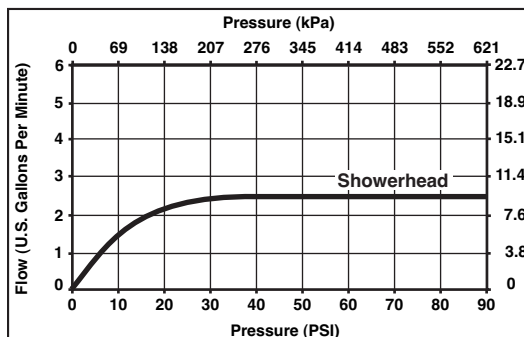
- Monitor® 18 Series pressure balanced bath mixing valve with Scald-Guard®.
- Maintains a balanced pressure of hot and cold water even when a valve is turned on or off elsewhere in the system.
- Must also order R18442 Jetted Shower XO™ or R18448 Jetted Shower™ tub/shower rough valve body.
- Back to back installation capability.
- Lever volume control handle; temperature adjustment dial.
- Red and Blue graphics indicate hot/cold temperature adjustment.
- Field adjustable to limit handle rotation into hot water zone.
- Maximum dial rotation adjustable between 90° and 180°.
- All parts are replaceable from the front of the valve.
- Adjusts for up to 1" wall thickness.

WARRANTY

- Lifetime Faucet and Finish Limited Warranty to the original consumer purchaser to be free from defects in material and workmanship.
- 5 Year Limited Warranty for usage in all industrial, commercial and business applications.

COMPLETE VALVE COMPLIES WITH:

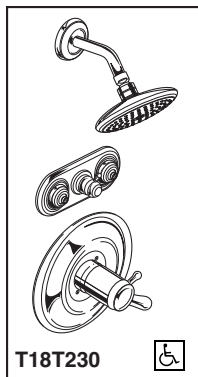
- ASME A112.18.1 / CSA B125.1
- ASSE 1016
- Indicates ADA compliance to ICC/ANSI A117.1
- CSA Certified
- IAPMO Listed



Delta reserves the right (1) to make changes in specifications and materials, and (2) to change or discontinue models, both without notice or obligation. Dimensions are for reference only. See current full-line price book or www.specselect.com for finish options and product availability.

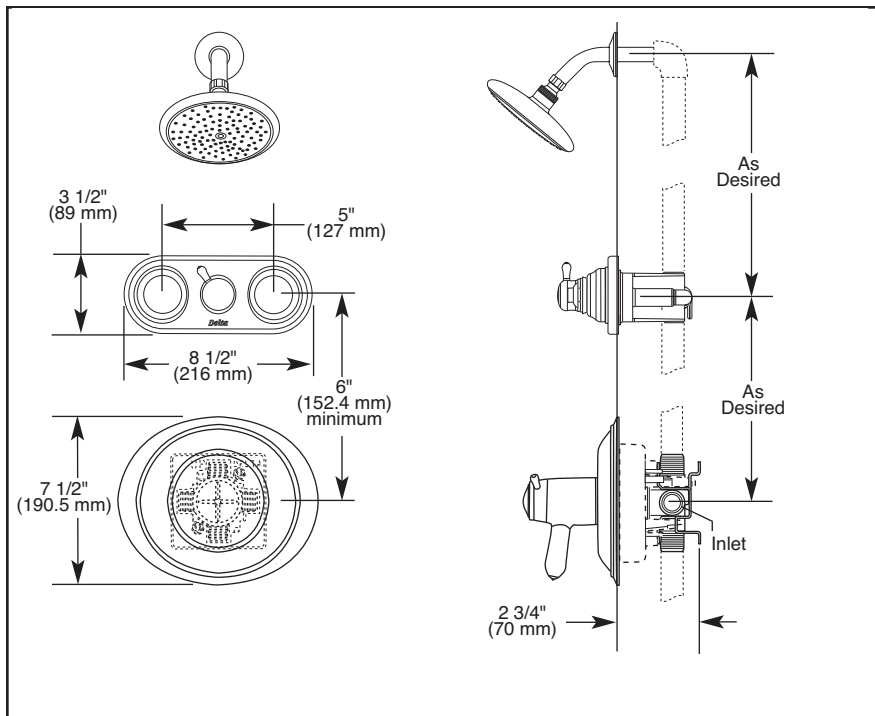
DSP-B-T18455 Rev. A

55 E. 111th Street, Indianapolis, Indiana 46280
395 Matheson Blvd. E., Mississauga, ON L4Z 2H2
© 2007 Masco Corporation of Indiana

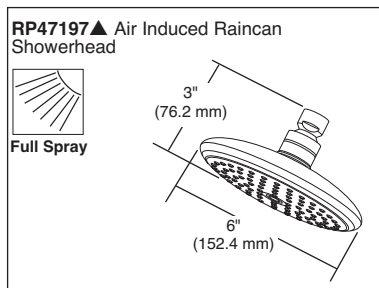


Submitted Model No.: _____

Specific Features: _____



▲ Designate proper finish suffix



JETTED SHOWER™ TRIM

- Innovations® Collection
- TempAssure® Thermostatic
- Shower Only

STANDARD SPECIFICATIONS:

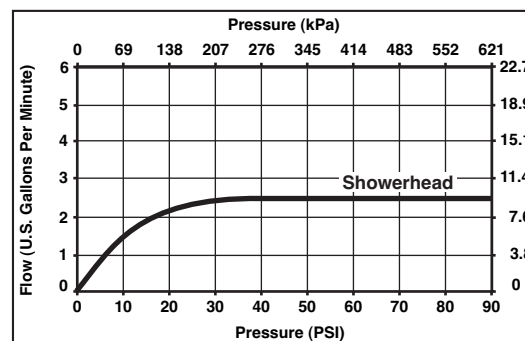
- TempAssure® 17T/18T thermostatic valve cartridge.
- Thermostatic wax element maintains the outlet temperature to $\pm 3.6^{\circ}\text{F}$.
- Must also order R18442 Jetted Shower XO™ or R18448 Jetted Shower™ rough valve body.
- Back to back installation capability.
- Lever volume control handle; temperature adjustment dial.
- Graphics indicate hot/cold temperature adjustment.
- Field adjustable to limit rotation into hot water zone.
- All parts are replaceable from the front of the valve.
- Adjusts for up to 1" wall thickness.

WARRANTY

- Lifetime Faucet and Finish Limited Warranty to the original consumer purchaser to be free from defects in material and workmanship.
- 5 Year Limited Warranty for usage in all industrial, commercial and business applications.

COMPLETE VALVE COMPLIES WITH:

- ASME A112.18.1 / CSA B125.1
- ASSE 1016
- Indicates ADA compliance to ICC/ANSI A117.1
- CSA Certified
- IAPMO Listed

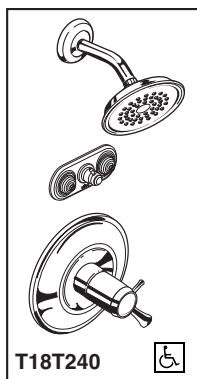


Delta reserves the right (1) to make changes in specifications and materials, and (2) to change or discontinue models, both without notice or obligation. Dimensions are for reference only. See current full-line price book or www.specselect.com for finish options and product availability.

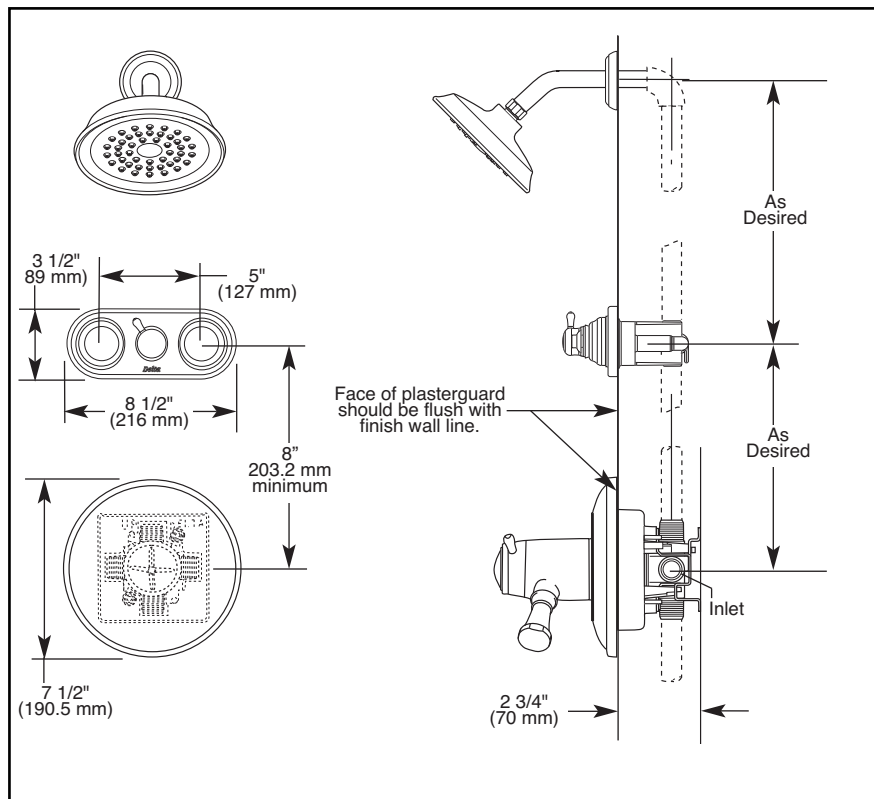
2.D.36

55 E. 111th Street, Indianapolis, Indiana 46280
395 Matheson Blvd. E., Mississauga, ON L4Z 2H2
© 2007 Masco Corporation of Indiana

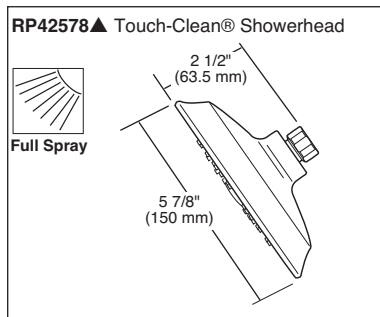
DSP-B-T18T230 Rev. A



Submitted Model No.: _____
 Specific Features: _____



▲ Designate proper finish suffix



SHOWER TRIM

- Lockwood™ Collection
- TempAssure™ Thermostatic
- Shower Only (T18T240)

STANDARD SPECIFICATIONS:

- TempAssure™ 17T thermostatic valve cartridge.
- Thermostatic wax element maintains the outlet temperature to $\pm 3.6^{\circ}\text{F}$.
- Must also order R10000-UNBX rough valve body.
- Must also order R18442 Jetted Shower XO™ or R18448 Jetted Shower™ rough valve body.
- Back to back installation capability.
- Lever volume control handle; temperature adjustment dial.
- Graphics indicate hot/cold temperature adjustment.
- Field adjustable to limit rotation into hot water zone.
- All parts are replaceable from the front of the valve.
- Adjusts for up to 1" wall thickness.

WARRANTY

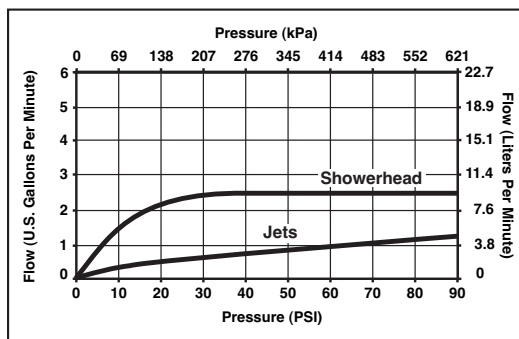
- Lifetime Faucet and Finish Limited Warranty to the original consumer purchaser to be free from defects in material and workmanship.
- 5 Year Limited Warranty for usage in all industrial, commercial and business applications.

COMPLETE VALVE COMPLIES WITH:

- ASME A112.18.1 / CSA B125.1
- ASSE 1016

♿ Indicates ADA compliance to ICC/ANSI A117.1

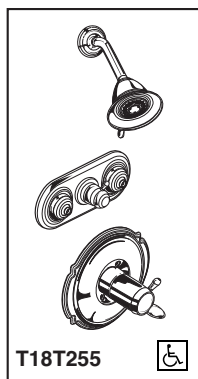
- CSA Certified
- IAPMO Listed



Delta reserves the right (1) to make changes in specifications and materials, and (2) to change or discontinue models, both without notice or obligation. Dimensions are for reference only. See current full-line price book or www.specselect.com for finish options and product availability.

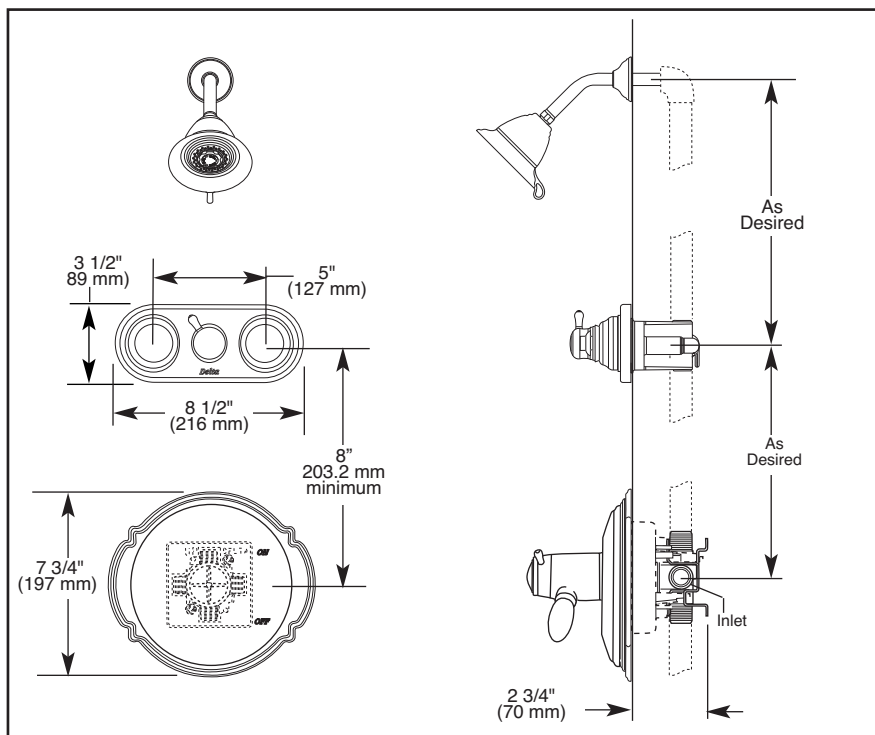
DSP-B-T18T240 Rev. A

55 E. 111th Street, Indianapolis, Indiana 46280
 395 Matheson Blvd. E., Mississauga, ON L4Z 2H2
 © 2007 Masco Corporation of Indiana

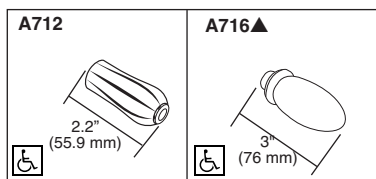
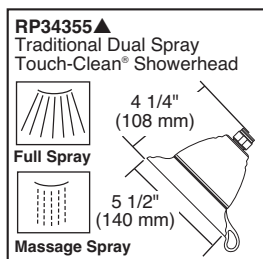


Submitted Model No.: _____

Specific Features: _____



▲ Designate proper finish suffix



SHOWER TRIM

- Victorian® Collection
- TempAssure™ Thermostatic
- Shower Only (T18T255)

STANDARD SPECIFICATIONS:

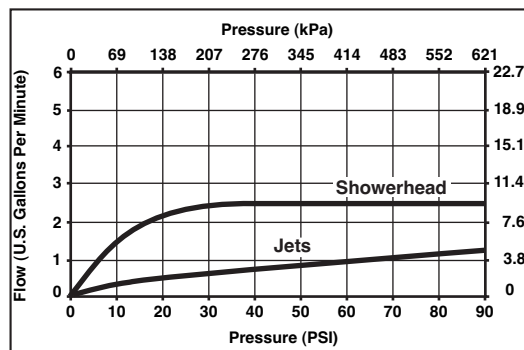
- TempAssure™ 17T thermostatic valve cartridge.
- Thermostatic wax element maintains the outlet temperature to $\pm 3.6^{\circ}\text{F}$.
- Must also order R10000-UNBX rough valve body.
- Must also order R18442 Jetted Shower XO™ or R18448 Jetted Shower™ rough valve body.
- Back to back installation capability.
- Lever volume control handle; temperature adjustment dial.
- Graphics indicate hot/cold temperature adjustment.
- Field adjustable to limit handle rotation into hot water zone.
- All parts are replaceable from the front of the valve.
- Adjusts for up to 1" wall thickness.

WARRANTY

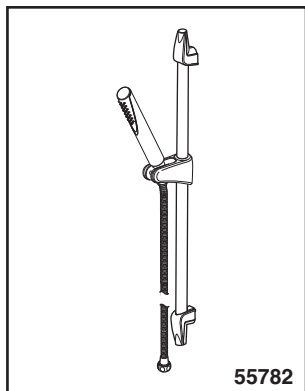
- Lifetime Faucet and Finish Limited Warranty to the original consumer purchaser to be free from defects in material and workmanship.
- 5 Year Limited Warranty for usage in all industrial, commercial and business applications.

COMPLETE VALVE COMPLIES WITH:

- ASME A112.18.1 / CSA B125.1
- ASSE 1016
- Indicates ADA compliance to ICC/ANSI A117.1
- CSA Certified
- IAPMO Listed



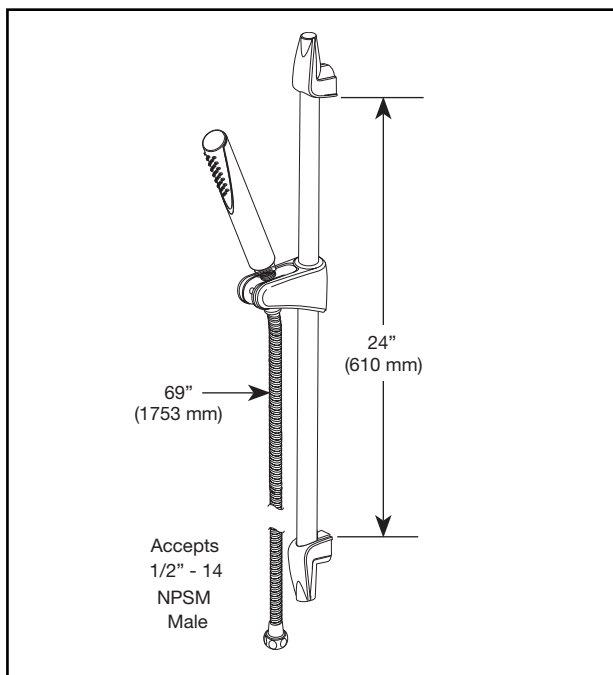
Delta reserves the right (1) to make changes in specifications and materials, and (2) to change or discontinue models, both without notice or obligation. Dimensions are for reference only. See current full-line price book or www.specselect.com for finish options and product availability.



55782

Submitted Model No.: _____

Specific Features: _____



- ◆ Your Delta Faucet hand shower incorporates a backflow protection system that has been tested to be in compliance with ASME A112.18.3 CSA B125 and ASME A112.18.1. It incorporates two certified check valves in series, which operate independently and are integral, nonserviceable parts of the wand assembly

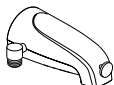
Available Options for Field Conversion:
Note: Wall Bar Not To Be Used As Grab Bar.



- 50560 (Available in chrome & SS)**
- 90° Wall supply elbow & flange, 1/2" IPS Female Inlet and 1/2" - 14 NPSM Male Threaded Outlet.



- 50650 (Available in chrome & SS)**
- Brass Shower Arm Diverter.



- RP3914 (Available in chrome only)**
- Chrome Plated Pull-Up Diverter Spout (for hand shower only or tub and hand shower only applications), for 1/2" or 3/4" IPS.



PERSONAL HAND HELD SHOWER

- 69" (1753 mm) Plastic Hose
- Certified Dual Check Valves
- 24" Wall Bar

STANDARD SPECIFICATIONS:

- ABS hand held shower with one pattern.
- Available in chrome and stainless steel finishes.
- Matched Finish ABS Hand Held Shower – not a positive shut-off.
- Matched Finish 69" (1753 mm) Flexible Plastic Hose.
- Certified Dual Check Valves.
- 24" (610 mm) wall bar with adjustable slide (allows for adjustable shower height) only. Not to be used as a Grab Bar. Not ADA compliant.
- 2.5 gpm @ 80 psi (9.5 L/min @ 552 kPa).

WARRANTY:

- Limited Lifetime Faucet and Finish Warranty to the original consumer purchaser to be free from defects in material and workmanship.
- 5 Year Limited Warranty for usage in all industrial, commercial and business applications.

COMPLIES WITH:

- ASME A112.18.1 / CSA B125.1

