



Power Tools Accessories Catalog



**STANDS BETWEEN
YOU AND 1000 VOLTS**

PROTECT YOURSELF FROM ELECTRIC SHOCK.™



1000 V

Classified in Accordance
With IEC 60900:2018
ASTM F1505
Classifiedes conforme à IEC
60900:2018
ASTM F1505
Classé conformément au
standard IEC 60900:2018
ASTM F1505



VORTEX™

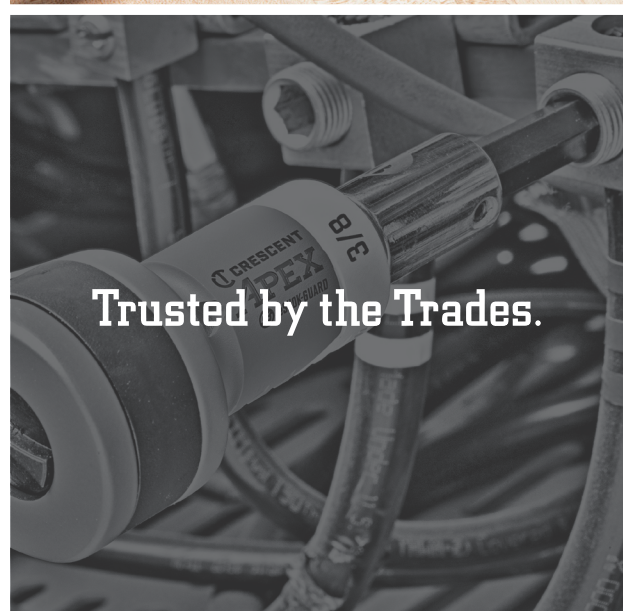


alphaCASE™



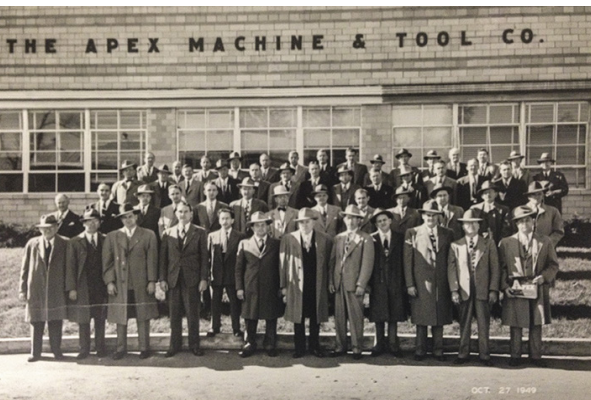
U-GUARD™

**CRESCENT
APEX®**



Trusted by the Trades.

The APEX® Assembly & Fabrication tools plant was founded in Dayton, Ohio in 1933 as the APEX Machine & Tool Company.



The brand was quickly established as durable dependability on assembly lines for automotive and general industry. Over 85 years later, APEX is still regarded as a market leader in fastening tools such as bits, sockets, wrenches, and torque products that are engineered for the toughest industrial applications.

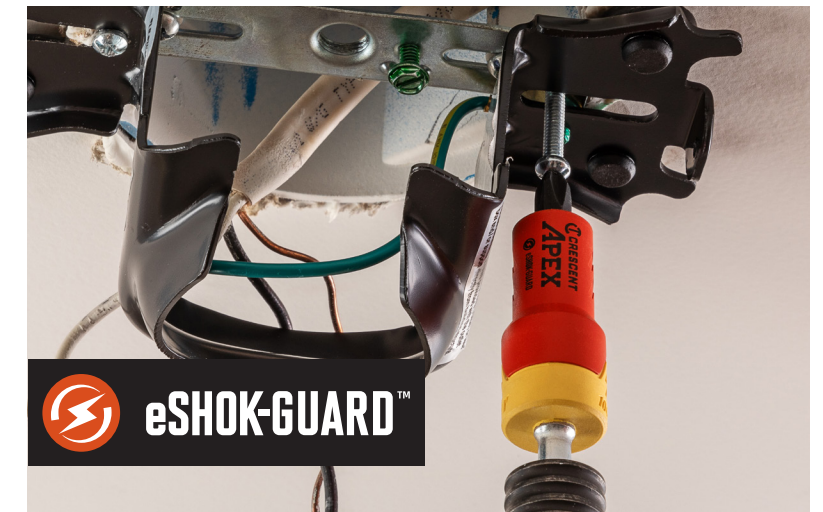


Leveraging the brand's legacy in the assembly manufacturing space, in 2019, the Crescent APEX® line of power tool accessories was launched for construction and industrial applications. The Crescent APEX line enhances durability, extends life and improves tools fit for professional tradesmen. We spent countless hours with our in-house metallurgical team to enhance the heat treatment process, ensuring our products meet and exceed user durability and life requirements. We take pride in our ability to provide user-focused innovative solutions in assembly manufacturing and we are confident this product line will do the same for construction and industrial applications.



Table of Contents

eSHOK-GUARD™ Products	4-5
u-GUARD™ Products	6-7
alphaCASE™ Sets	8-9
VORTEX™ Impact Torsion Zone Accessories	10-11
Full Body Insert Bits	11

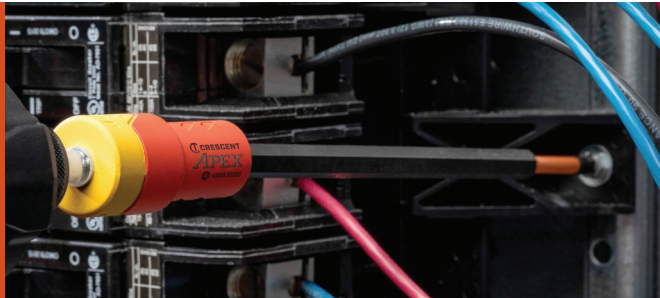


STANDS BETWEEN YOU AND 1,000 VOLTS.

Protect yourself from electric shock with Crescent APEX's new patented isolated technology, eSHOK-GUARD, providing insulation of up to 1,000 volts.

87% OF
PROFESSIONALS
EXPERIENCE
ELECTRIC SHOCK
on construction job sites.
eSHOK-GUARD is there
to protect you – for life.

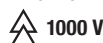
US Pat. #8,764,413



PROTECT YOURSELF FROM ELECTRIC SHOCK.™



MH64413



Classified in Accordance
With IEC 60900:2018
ASTM F1505
Clasificadas conforme al
IEC 60900:2018
ASTM F1505
Classé conformément au
standard IEC 60900:2018
ASTM F1505

54% OF
PROFESSIONALS
WORK AROUND
LIVE ELECTRICITY
everyday.
eSHOK-GUARD is there
to protect you – for life.

US Pat. #8,764,413



PROTECT YOURSELF FROM ELECTRIC SHOCK.™



MH64413



Classified in Accordance
With IEC 60900:2018
ASTM F1505
Clasificadas conforme al
IEC 60900:2018
ASTM F1505
Classé conformément au
standard IEC 60900:2018
ASTM F1505



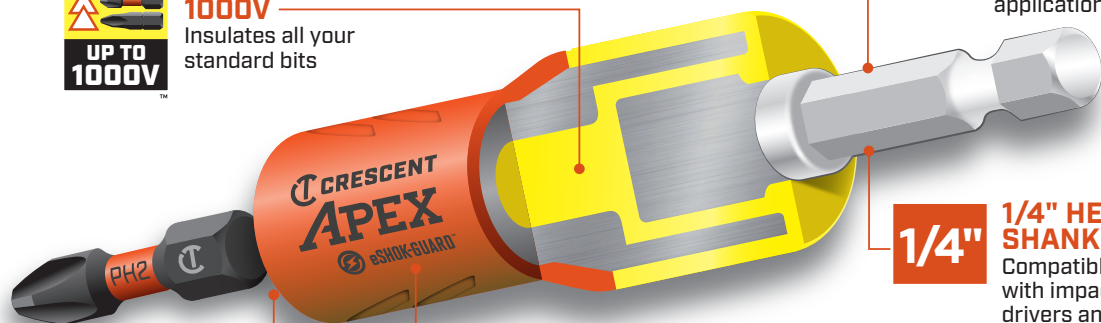
Isolated Bit Holder



**ISOLATION ZONE
PROTECTS UP TO
1000V**
Insulates all your
standard bits



**IMPACT
RATED**
Withstands heavy-use
in impact
applications



1/4"
**1/4" HEX
SHANK**
Compatible
with impact
drivers and
drills



**MAGNETIC
TIP**
Fasteners stay
securely in
place



**RETAINING
RING**
Easily secure
and replace bits

Item No.	Description	Size	Overall Length	Rated Voltage
CAEBH2C	Isolated Bit Holder	1/4 in	3 in	1000V
CAEBH-2CK-4	Ceiling Fan & Light Installation Kit with Isolated Bit Holder	1/4 in	3 in	1000V



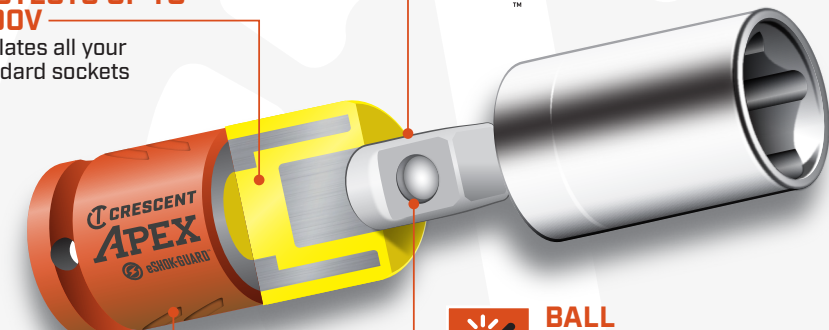
Socket Isolator



**ISOLATION ZONE
PROTECTS UP TO
1000V**
Insulates all your
standard sockets



**IMPACT
RATED**
Withstands heavy-use
in impact applications



**COMPACT
DESIGN**
Improves
precision in
tight spaces



**BALL
DETENT**
Easily secure
and replace
sockets

Item No.	Size	Overall Length	Rated Voltage
CAEAD316	1/4 in	2.125 in	1000V
CAEAD324	3/8 in	2.25 in	1000V
CAEAD332	1/2 in	2.625 in	1000V



u-GUARD™ Non-Marring Covered Tools

The Crescent APEX series of u-GUARD non-marring covered tools gives you protection and control on the jobsite. These patented tools allow the user to grab directly onto the drive tool while it spins freely inside the cover, increasing fastening control and significantly reducing contact from the rotating tool.



- Non-marring cover protects from scratching or damages
- Thin wall maximizes access
- Free spinning sleeve enhances control and safety
- Full body design for greater strength and durability
- Optimized tip geometry for exact fastener fitment
- Helps to eliminate cam-out and promotes fastener retention



u-GUARD Covered Impact Power Bits

Item No.	Drive End	Drive Size	Length
CAUGB3BPH2-1	Phillips	PH2	3-1/2 in
CAUGB3BSQ2-1	Square	SQ2	3-1/2 in
CAUGB3BTX25-1	Torx	T25	3-1/2 in
CAUGB3BR-3	Phillips, Square & Torx and alphaCASE™ Refillable Rail	PH2, SQ2, T25	3-1/2 in



u-GUARD Covered Magnetic Impact Power Bits

Item No.	Drive End	Drive Size	Length
CAUMB3BPH2-1	Phillips	PH2	3-1/2 in
CAUMB3BSQ2-1	Square	SQ2	3-1/2 in
CAUMB3BTX25-1	Torx	T25	3-1/2 in



u-GUARD Covered Bit Holders

Item No.	Description	Drive Size	Length
CAUGBQ2A-1	Quick Release Bit Holder	1/4	2-1/4 in
CAUGBH3-1	Bit Holder	1/4	3 in
CAUGK-15	Bit Holder with 15 - PH2 Insert Bits and alphaCASE Refillable Box	1/4	3 in



u-GUARD Project Kits

Item No.	Description
CAUGB3BPH2K	3.5 in PH2 u-GUARD Bit, 3/8 in Drill Bit, 10 Screws, 10 Dry Wall Anchors
CAUGBQ2DR-4	2-9/16 in Quick Release Bit Holder, 1 - 1 in PH2, 1 - 1 in T25, 1 - 1 in SQ2, 1 - 1 in SL6-8, alphaCASE™ Refillable Rail



u-GUARD Covered Magnetic Nutsetters

Item No.	Drive End	Length
CAUGN2DHX16-1	1/4 in	2.56 in
CAUGN2DHX20-1	5/16 in	2.56 in
CAUGN2DHX24-1	3/8 in	2.56 in



u-GUARD Covered Socket Sets

Item No.	Description	Drive Size
CAUGK2-31	1/4 in and 5/16 in Covered Sockets with 1/4 Drive Vortex Socket Adaptor	1/4
CAUGK2-32	3/8 in and 7/16 in Covered Sockets with 3/8 Drive Vortex Socket Adaptor	3/8



Superior Durability

The Crescent APEX® 30-piece fastening set with u-GUARD™ is built for the most demanding jobsites. The stack and store alphaCASE™ features a tongue and groove design with thick sidewall construction. The 30-piece set includes the patented Crescent APEX u-GUARD non-marring covered tools which protect final finishes from damage as well as the core APEX S2 steel product with optimized tip geometry.

CAUGSET-30 | 30 Piece u-Guard Fastening Set

Superior Durability
to withstand the toughest jobs



Pivoting Insert Rails
refillable for ease of use

Stackable
for convenient storage



Rail Flexibility
store longer bits

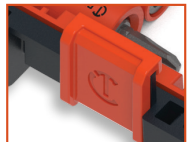
Additional Rail Slot
increased bit count

Redesigned Rail Grip
easy to grip and access bits

Full Length Metal Hinge
for improved case life

Exterior Labels
for visibility and marking

Attachment Points
for versatility on the job



New Latch Mechanism
lower profile, easy to use



alphaCASE™



30 Pc. u-GUARD Fastening Set

- Non-marring cover protects from scratching or damages
- Free spinning design enhances control and safety
- Optimized tip geometry for best fit (50% better grip measured on Phillips® bit only)
- Superior durability to withstand the toughest jobs
- Full body design for greater strength and durability
- Proprietary heat treat process maximizes bit life (2x more durable)
- Pivoting insert rails for ease of use
- Stackable for convenient storage

Item No.	Included Storage	Product Weight
CAUGSET-30	alphaCASE	1.583 lb

Item No.	Description	Qty.
AMB1SL6	6 - 8 x 1 in Slotted Insert Bit	1
AMB1TX20	T20 x 1 in Torx® Insert Bit	1
AMB1TX25	T25 x 1 in Torx Insert Bit	4
AMB1SQ2	#2 x 1 in Square Insert Bit	2
AMB1PH1	#1 x 1 in Phillips Insert Bit	2
AMB1PH2	#2 x 1 in Phillips Insert Bit	6
AMB2PH2	#2 x 2 in Phillips Power Insert Bit	4
AMB2SQ2	#2 x 2 in Square Power Insert Bit	2

38 Pc. Vortex™ Fastening Set

- Superior durability to withstand the toughest jobs
- Optimized tip geometry for exact fastener fitment
- Helps to eliminate cam-out and promotes fastener retention
- Modified S2 steel and proprietary heat treat process maximizes bit life
- Attachment points for versatility on the job
- Full length metal hinge for improved case life
- Pivoting insert rails for ease of use
- Stackable for convenient storage
- Exterior labels for visibility and marking

Item No.	Included Storage	Product Weight
CAVSET-30	alphaCASE	1.282 lb

Item No.	Description	Qty.
CAVB1PH1	#1 x 1 in Vortex Phillips Insert Bit	2
CAVB1PH2	#2 x 1 in Vortex Phillips Insert Bit	9
CAVB1PH3	#3 x 1 in Vortex Phillips Insert Bit	2
CAVB1SL6	6 - 8 x 1 in Vortex Slotted Insert Bit	1
CAVB1SL8	8 - 10 x 1 in Vortex Slotted Insert Bit	1
CAVB1SQ2	SQ2 x 1 in Vortex Square Drive Insert Bit	3
CAVB1T15	T15 x 1 in Vortex Torx Insert Bit	2



Item No.	Description	Qty.
AMB2TX25	T25 x 2 in Torx Power Insert Bit	2
AUMB3BPH2	#2 Phillips u-GUARD Covered Impact Power Bit with Ring Magnet	1
AUGB3BTX25	T25 Torx u-GUARD Covered Impact Power Bit	1
AUGN2B20	5/16 in u-GUARD Covered Magnetic Nutsetter	1
AUGN2B16	1/4 in u-GUARD Covered Magnetic Nutsetter	1
AUGBQ2A	u-GUARD Covered Quick Release Bit Holder 1/4 in x 2-1/4 in	1
AMBQ2A	2-1/4 in Quick Release Bit Holder	1



Item No.	Description	Qty.
CAVB1T20	T20 x 1 in Vortex Torx Insert Bit	2
CAVB1T25	T25 x 1 in Vortex Torx Insert Bit	6
CAVB2PH2	#2 x 2 in Vortex Phillips Power Bit	3
CAVB2SQ2	SQ2 x 2 in Vortex Square Drive Power Bit	3
CAVB2T25	T25 x 2 in Vortex Torx Power Bit	3
CAMBH3	3 in Magnetic Bit Holder	1
CAUGBH3	3 in u-GUARD Covered Bit Holder	1

Vortex™ Impact Torsion Zone Accessories

The Crescent APEX line enhances durability, extends life and improves tool fit for professional tradesmen. We spent countless hours with our in-house metallurgical team to enhance the heat treatment process, ensuring our products meet and exceed user durability and life requirements.



Vortex Impact Torsion Zone
Torsion design delivers maximum performance for impact applications



Unique Steel Formulation and Heat Treatment Process
Maximizes extractor life



Best Fit
Optimized tip geometry for exact fastener fitment. Helps to eliminate cam-out and promotes fastener retention.



Laser Marking
For long-lasting quick and easy size identification



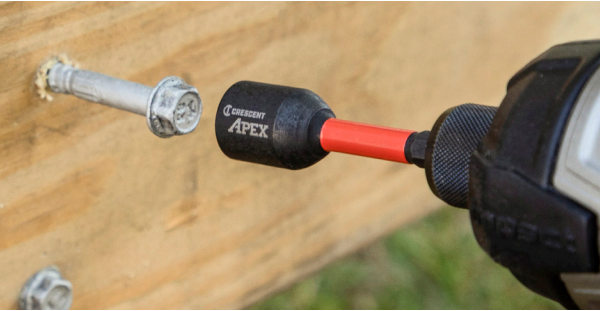
Power Bits

Item No.	Drive End	Drive Size	Length
CAVB2PH2-2	Phillips	PH2	2 in
CAVB2SQ2-2	Square	SQ2	2 in
CAVB2T25-2	Torx	T25	2 in
CAVB6PH2-2	Phillips	PH2	6 in
CAVB6T25-2	Torx	T25	6 in



Nutsetters

Item No.	Drive Size	Length
CAVN2DHX16	1/4 in	2-9/16 in
CAVN2DHX20	5/16 in	2-9/16 in
CAVN2DHX24	3/8 in	2-9/16 in
CAVN2DHX28	7/16 in	2-9/16 in



Socket Adaptors

Item No.	Drive Size	Length
CAVAD216	1/4	2 in
CAVAD224	3/8	2 in



Item No.	Description
CAVAD2R-3	1/4, 3/8, & 1/2 Drive Vortex Socket Adaptors with alphaCASE Refillable Rail



Insert Bits Set

Item No.	Description	Qty.
CABDG1R-7	7-pc Screwdriving Set with Magnetic Bit Holder and alphaCASE Refillable Rail	7 pieces



Full Body Insert Bits

- Full body design for greater strength and durability
- Optimized tip geometry for exact fastener fitment
- Helps to eliminate cam-out and promotes fastener retention
- Modified S2 steel and proprietary heat treat process maximizes bit life
- Laser markings for long-lasting quick and easy size identification

Item No.	Drive End	Drive Size	Length
CAB1PH2-2	Phillips	PH2	1 in
CAB1SQ2-2	Square	SQ2	1 in
CAB1T25-2	Torx	T25	1 in



The Crescent APEX line enhances durability,
extends life and improves tools fit for
professional tradesmen.



Learn today how Crescent Apex tools are engineered for tough, industrial applications.
www.crescenttool.com