



# RETAIL PRODUCT CATALOG

*An Air of Excellence in :*

- High Velocity Air Movement
- Misting Fans
- Industrial Ceiling Fans
- Roof and Attic Ventilation
- Bath Ventilation
- Heating Solutions

[www.bvc.com](http://www.bvc.com)



*Our complete line of ventilation products for commercial, industrial, agricultural, and residential use are sold under these fine names:*



# TABLE OF CONTENTS

## **MAXXAIR PRO 4**

Portable Air Circulators .....	4
Fan Accessories .....	5

## **MAXXAIR 6**

Portable Air Circulators .....	6
Floor Fans .....	7
Desk Fans .....	7
Confined Space Ventilators .....	8
Carpet Fans .....	8
Exhaust Fans .....	8
Pedestal Fans .....	9
Wall Mount Fans .....	9
Evaporative Coolers .....	10

## **COOL DRAFT 11**

Hi-Pressure Misting Fans .....	11
Mid-Pressure Misting Fans.....	11

## **BIG AIR 12**

Industrial Ceiling Fans .....	12
-------------------------------	----

## **GREEN PRODUCTS 13**

Solar Roof Mount Ventilators .....	13
Solar Gable Mount Ventilators .....	13
Solar Turbine Replacement .....	13

## **VENTAMATIC** **14**

Gable Mount Power Attic Ventilators .....	14
Roof Mount Power Attic Ventilators .....	15
Whole House Fans .....	16
Static Vents .....	17-18
Wind Turbines .....	18-19

## **NUVENT** **20**

Designer Series Bath Fan-Lights .....	20
SH Series / MS Series / CF Series Bath Fans ....	20
Contractor Job Packs .....	22
Ceiling Radiation Dampers .....	22
Boot and Shoe Dryers .....	23

## **HETR** **24**

Tower Heaters .....	24
Portable Utility Heater .....	24
Pedestal Heater .....	25
Wall Mount Heater .....	25

## **REPLACEMENT PARTS** **26**

Parts and Accessory Information .....	26
---------------------------------------	----

## **ABOUT US / CONTACT LIST** **27**

Our Company .....	27
Contact Information .....	27



## AIR MOVEMENT AND ACCESSORIES FOR THE PROFESSIONAL

### PORTABLE AIR CIRCULATORS

- Heavy duty 2-speed thermally protected PSC commercial or industrial motors
- Rugged roll-formed pre-coated steel housing for improved durability
- Non-skid positioning legs
- Convenient handles for portability
- Rust-resistant OSHA compliant grilles
- Pre-positioned hanging hardware receivers for installation of additional MaxxAir Pro accessories
- 2-year limited warranty



### DIRECT AND BELT DRIVE COMMERCIAL FANS

**BF30DDBLKPRO 30" Direct Drive**  
5500 CFM (high) / 3850 CFM (low)

**BF42BDBLKPRO 42" Belt Drive**  
13300 CFM (high) / 9500 CFM (low)

USE WITH	30" PRO	42" PRO
XXBF30COVERBLK	✓	
XXBF42COVERBLK		✓
XXBF2430DUCT	✓	
XXWBRKT3042	✓	✓
XXWALLARM	✓	✓
XXDOCKARM	✓	✓
XXLED950	✓	✓

**Cover - XXBF30COVERBLK / XXBF42COVERBLK**



- **Keeps out unwanted dust and dirt when not in use**
- **Lightweight and durable material**

**Flex Duct - XXBF2430DUCT**



- **128" L 210D nylon duct which collapses into a convenient carry case**
- **Use for both intake and exhaust ventilation where it's needed**

**Hanging Assembly - XXWBRKT3042**



- **Get air circulation in areas where floor space is at a premium**
- **Fully assembles in less than 20 minutes**

**Wall Bracket - XXWALLARM**



- **Mounts to both wall and ceiling, and metal or wood surfaces**
- **Powder-coated steel construction**

**Dock Arm - XXDOCKARM**



- **Extends and retracts as needed to save space**
- **2 outlet plug pre-installed with on/off switch**

**Dock Light - XXLED950**



- **4 independent LEDs**
- **Low heat and energy efficient**
- **Can be used independently of hanging system**

**\*Pro accessories are also available for our 24" tilt fans, including wall bracket systems, covers, stand fan extensions, and more. Please call Customer Service for more details.**



# HIGH VELOCITY AIR MOVEMENT



## PORTABLE AIR CIRCULATORS

- Heavy duty 2-speed thermally protected PSC commercial or industrial motors
- Rugged 22-gauge galvanized steel housing
- Non-skid positioning legs
- Convenient handles for portability
- Safe, OSHA compliant grilles
- C-UL-US Listed
- 8-foot power cord
- 2-year limited warranty

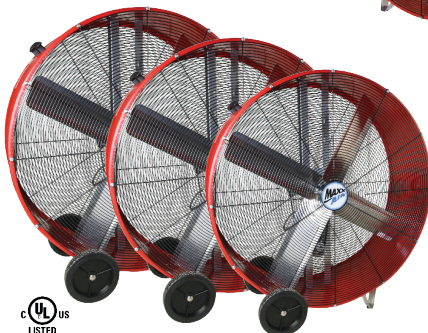
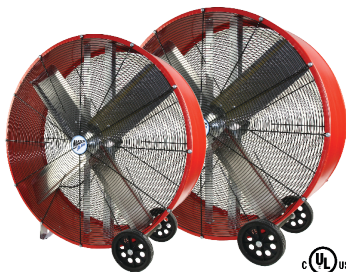
### DIRECT DRIVE COMMERCIAL FANS

**BF36DD 36" Direct Drive**

9000 CFM (high) / 6300 CFM (low)

**BF30DD 30" Direct Drive**

5500 CFM (high) / 3850 CFM (low)



### BELT DRIVE INDUSTRIAL FANS

**BF48BD 48" Belt Drive**

18000 CFM (high) / 10100 CFM (low)

**BF42BD 42" Belt Drive**

13300 CFM (high) / 9500 CFM (low)

**BF36BD 36" Belt Drive**

10200 CFM (high) / 7300 CFM (low)

### 24" 2N1 TILT / STAND FAN

**BF24TF2N1 YEL Tilt Fan (Direct Drive)**

Converts from a roll-around floor fan with snap-on snap-off wheels to a 52" stand fan with leg extensions. 4000 (high) / 2800 (low) CFM

### 24" TILT FAN

**BF24TF YEL Tilt Fan (Direct Drive)**

Same as 2N1 but without leg extensions. 4000 (high) / 2800 (low) CFM

*Wall Mount Bracket available for this model. Phone Customer Service at 1.800.433.1626 for details.*



**Models:**

**BF24TF YEL**

**24" Tilt Fan**

**BF24TF2N1YEL**

**24" 2N1 Tilt/Stand Fan**

## FLOOR FANS

- 3-speed energy efficient PSC motor
- Fan head tilts a full 120°
- Individually balanced fan blades for minimum vibration
- Adjustment handles provide easy change in air direction
- Sturdy base with non-skid feet
- OSHA compliant rust-resistant grilles
- 1-year limited warranty



### 14" BLACK FLOOR FAN

**HVFF 14 High Velocity Floor Fan (Direct Drive)**  
Constructed of a durable black powder-coated, RoHS compliant finish for ease in cleaning. Built-in cord wrap on back grille for no-fuss storage.

### 20" BLACK FLOOR FAN

**HVFF 20 High Velocity Floor Fan (Direct Drive)**  
Constructed of a durable black powder-coated, RoHS compliant finish for ease in cleaning.



### 20" RED SHROUD FLOOR FAN

**HVFF 20S RED High Velocity Shroud Floor Fan (Direct Drive)**  
Constructed of a rugged 22-gauge powder-coated steel shroud for improved airflow. 6-ft power cord.

## DESK FANS



- 1-speed setting with on/off toggle switch
- Sturdy and compact design
- Durable metal body construction
- Steel base with adjustable, non-skid grips
- 1-year limited warranty



Powered by USB plug or your regular outlet using the included adapter

Model	Number of Blades	Blade Type	Voltage
HVDF4	4	PP	5V DC
HVDF6	3	PP	5V DC
HVDF8	3	PP	12V AC

Models:  
HVDF4 4" Desk Fan  
HVDF6 6" Desk Fan  
HVDF8 8" Desk Fan

## CONFINED SPACE VENTILATOR

- 2-speed enclosed motor
- Exhaust or intake function
- Outdoor use with GFCI outlet
- 20-ft flex hose included
- OSHA compliant grille
- 1-year limited warranty



Models:

HVHF08COMBO

8" Fan with Hose (900 CFM)

HVHF12COMBO

12" Fan with Hose (2000 CFM)

*Perfect for crawl spaces, attics, and basements*



## CARPET FANS

- Heavy duty 3-speed induction motor
- Rugged polymeric housing
- Balanced carry handle
- 30-ft power cord
- 1-year limited warranty

### HVCF4000 High Velocity Carpet Fan

Constructed of a rugged yellow polymeric housing for visibility and safety. 4000 CFM (high) / 3300 CFM (medium) / 2500 CFM (low) at 10.5A / 9.5A / 8.2A respectively.

**Also available:** HOSE ADAPTER KIT FOR HVCF 4000 (HVCFHOSE KIT)

20-ft heavy duty 2-ply polyvinyl hose with steel support coils and hanger rings

## HEAVY DUTY EXHAUST FANS

- Totally enclosed energy efficient thermally protected PSC motors
- Balanced 4-blade fan assembly
- Integrated, precision formed draft-free shutters

*All models may be used with the Adjustable Thermostat with Firestat™.*



Model	CFM	Amps	Rough-In Opening
IF14	1400	2.65	17.25" x 17.25"
IF18	3000	5.34	20.75" x 20.75"
IF24	4100	4.35	28.25" x 28.25"
IF30	5500	6.3	34.25" x 34.25"
IF36	9000	5.1	40.25" x 40.25"



## PEDESTAL FANS

- 3-speed heavy duty motors
- Telescoping poles for maximum versatility
- OSHA compliant rust resistant grilles
- 2-year limited warranty

## OSCILLATING PEDESTAL FANS

### HVPF 22 OSC 22" Telescoping Model

4100 CFM (high) / 3800 CFM (medium) / 3500 CFM (low)

### HVPF 30 OSC 30" Telescoping Model

4800 CFM (high) / 4400 CFM (medium) / 4100 CFM (low)



Wall Mount Bracket available for HVPF 30.

## NON-OSCILLATING PEDESTAL FANS

### HVPF 30 30" Telescoping Model

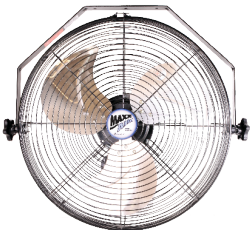
4800 CFM (high) / 4400 CFM (medium) / 4100 CFM (low)

### HVPF 30 YOKE 30" Yoke Model

Model	Fan Head	Pole Telescopes
HVPF 22 OSC	Oscillates 90°	50" - 70"
HVPF 30 OSC	Oscillates 90°	60" - 80"
HVPF 30	Tilts 90°	60" - 80"
HVPF 30 YOKE	Tilts 360°	60" - 65"

## WALL MOUNT FANS

- 3-speed design
- Powder-coated steel finish for durability
- OSHA compliant rust resistant grilles for safety



## 18-IN WALL MOUNT FANS

### HVWM 18

#### 18" Non-Oscillating Model

Totally enclosed, dust-proof and energy efficient PSC motor. Fan head tilts 180° to control air direction. Rugged hanging bar. 10-ft power cord. 1-year limited warranty.

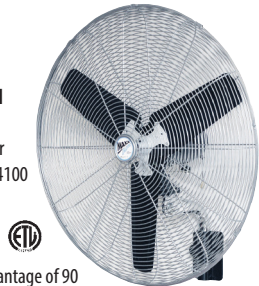
## 30-IN WALL MOUNT FANS

### HVWM 30 30" Non-Oscillating Model

Heavy duty thermally protected motor. Wall bracket features pre-punched holes for easy mounting. 8-ft power cord. 2-year limited warranty. 4800 CFM (high) / 4400 CFM (medium) / 4100 CFM (low)

### HVWM 30 OSC 30" Oscillating Model

Mirrors the features of the HVWM 30 but with the added advantage of 90° oscillation.



## EVAPORATIVE COOLERS

- 110V high efficiency, totally enclosed motors connect directly to water line or use reservoir independently
- Fully submersible, recirculating water pumps with maintenance-free float valves
- Filter constructed of honeycombed, specially-formulated cellulose with thermosetting resin
- Rotomolded polythelene cooler body for long-lasting use
- Straight and swivel casters for easy portability
- Industrial-duty aluminum fan blades
- 1-year limited warranty

**Lower air temperatures by as much as 26° without air conditioning!**



- EC18DVS**      **18" Cooler**  
5.7 total amps. Stands at 54" H x 28" W x 25" D.
- EC36D1**      **36" Cooler**  
11.76 total amps. Stands at 66" H x 61" W x 32" D.
- EC48B2**      **48" Cooler**  
14.8 total amps. Stands at 71" H x 75" W x 32" D.

Model	Fan Motor	Effective Spot Cooling Area	CFM	Water Reservoir	Submersible Water Pump
EC18DVS	variable speed direct drive, 1/4 HP	900 sq ft	2600	25 gal	1/5 HP
EC36D1	1-speed direct drive, 1/2 HP	2600 sq ft	9700	10 gal	1/6 HP
EC48B2	2-speed belt drive, 1 HP	3600 sq ft	17600 (high) 11300 (low)	15 gal	1/6 HP

- 3-speed industrial motors with fan-only and mist-fan options
- 18" fan head with stainless steel misting ring and custom nozzles
- No-kink wire reinforced pickup line
- Pulse-dampening misting hose
- OSHA compliant rust resistant grilles
- 1-year limited warranty

**HI-PRESSURE  
MISTING FANS**

**CDHP1840GRY 18" Misting Fan on 40 Gal Cooler**  
8-hour run time using the scratch-resistant 40 gallon cooler. Unit weighs 68 lbs without water.



**MID-PRESSURE  
MISTING FANS**

**CDMP1840GRY  
18" Misting Fan on 40 Gal Cooler**

15-hour run time using the scratch-resistant 40 gallon cooler. Unit weighs 68 lbs without water.

**CDMP1810 18" Misting Fan on 10 Gal Cooler**  
5-hour run time using the 10 gallon cooler. Stands 49" H x 24" L x 15" D. Unit weighs 60 lbs without water. Cooler color may vary from pictured setup.

**Fan stores inside 40 gallon cooler  
when not in use**

*Fan on Cooler : 64" H x 24" L x 18" D*

*Fan in Cooler : 33" H x 24" L x 18" D*



Model	Pressure	Pump	Cooler	Gal/Hr
CDMP1840GRY	Mid	180 psi	40 gal	2
CDMP1810	Mid	180 psi	10 gal	1
CDHP1840GRY	Hi	1000 psi	40 gal	2



## INDUSTRIAL CEILING FANS

The latest in energy saving.  
Up to 65% more efficient than traditional AC motors



**Model:**

**ICF72 72" Industrial Ceiling Fan**

**ICF96 96" Industrial Ceiling Fan**

- **Energy saving DC motor with lower operating temperature**
- **Silent operation using a motor programmed with a stabilized current**
- **9 blade design for high volume air movement**
- **6 speeds offer customized air settings**
- **Reversible direction for changing seasonal needs**
- **Remote control included**
- **1-year limited warranty**

<b>Model</b>	<b>Rated Voltage</b>	<b>Rated Power (Motor)</b>	<b>Remote Battery</b>
<b>ICF72</b>	<b>110 VAC</b>	<b>35W</b>	<b>1 x 12V 23AE</b>
<b>ICF96</b>	<b>110 VAC</b>	<b>35W</b>	<b>1 x 12V 23AE</b>

**Remote controlled operation offers 6 speeds and reverse functionality at your fingertips**



**Interested in buying multiple ceiling fans?  
Each remote can be paired to a specific fan,  
giving you the ability to run each fan at different speeds**



## SOLAR POWERED ATTIC VENTILATION

**UP TO 1000 CFM ON ALL MODELS  
LINK ADDITIONAL SOLAR PANELS AND INCREASE YOUR FAN'S CFM**



### ROOF MOUNT VENTILATORS WITH SOLAR PANEL

- 12.6 watt solar panel with 25' power cord
- 18 volt, thermally protected DC motor
- Constructed of heavy duty galvanized steel
- Expanded steel mesh grille to protect against birds and rodents
- 5-year limited warranty on DC motor and 10-year limited warranty on solar panel

#### **CXSOLRFDM**

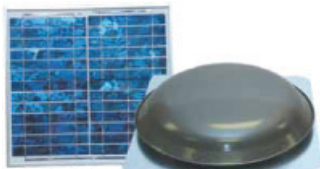
##### **Solar Panel Mounted on Dome**

Includes roof mount attic ventilator with solar panel pre-mounted to the dome unit.

#### **CXSOLRF**

##### **Dome with Separate Solar Panel**

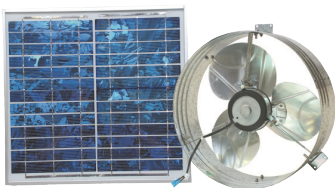
Includes both solar panel to be mounted separately and roof mount attic ventilator.



**Easily customize placement of solar panel for your geographic location**

### GABLE MOUNT VENTILATOR WITH SOLAR PANEL

- 12.6 watt solar panel with 25' power cord
- 18 volt, thermally protected DC motor
- Shroud constructed of heavy duty galvanized steel
- Mounts behind existing louvers
- 5-year limited warranty on DC motor and 10-year limited warranty on solar panel



#### **CXSOLGB**

##### **Gable Ventilator with Solar Panel**

Includes gable mount ventilator and solar panel.

### TURBINE REPLACEMENT WITH SOLAR PANEL



**Simply remove your old turbine and replace it with a high efficiency, solar-powered, low profile dome**

- Replaces any 12" turbine ventilator
- 12.6 watt solar panel with 25' power cord
- 18 volt, thermally protected DC motor
- 5-year limited warranty on DC motor and 10-year limited warranty on solar panel

#### **CXSOL12**

##### **Solar-Powered Turbine Replacement**

Includes turbine replacement and solar panel to mount separately.



## ROOF AND ATTIC VENTILATION



### GABLE MOUNT POWER ATTIC VENTILATORS

- *Completely preassembled*
- *Easy installation —no holes in roof required*
- *Fits behind existing louvers or order with optional shutter*

- *Precision balanced fan blades*
- *Adjustable thermostat*
- *Engineered motor mount for minimum vibration and extended motor life*



#### **CX2500**

#### **1650 CFM Gable Ventilator**

14" fan with a 2.1A PSC motor. Lifetime warranty.

#### **CX1600**

#### **1600 CFM Gable Ventilator**

14" fan with a 4.5A heavy duty motor. 2-year limited warranty.

#### **CX1500**

#### **1300 CFM Gable Ventilator**

14" fan with a 2.6A heavy duty motor. 2-year limited warranty.

*Order the gable mount ventilator shutter if you are not installing the gable mount unit behind existing louvers.*

<i>Model</i>	<i>Attic Size (sq ft)</i>	<i>Intake (sq ft)</i>
<b>CX2500</b>	<b>2500</b>	<b>600</b>
<b>CX1600</b>	<b>2400</b>	<b>600</b>
<b>CX1500</b>	<b>1850</b>	<b>600</b>



### GABLE MOUNT VENTILATOR SHUTTER

#### **CX2121 Automatic Gable Shutter**

Fully automatic shutter for all Cool Attic gable mount ventilator units. Constructed of high-impact, one piece ABS Cyclocac® frame. Felt-padded, .020 gauge aluminum louvers for quiet operation. Shutter measures 22" W x 23" H x 3" D. Ships preassembled.



## ROOF MOUNT POWER ATTIC VENTILATORS

- 14" fan size
- Rugged and efficient domes
- Motors built to last
- Proven and reliable construction
- Adjustable thermostats

### CX3000EE SERIES (1400 CFM) 2.1 AMP ENERGY EFFICIENT PSC MOTOR

#### CX3000EEAM Series

#### Galvanized Steel Power Attic Ventilator

Galvanized steel dome, galvanized steel venturi construction. Available in mill, brown, black, and weathered grey.

#### CX3000EEAA Series

#### Aluminum Power Attic Ventilator

Duradome® spun aluminum, aluminum venturi construction. Available in mill, brown, black, and weathered grey.

### CX4000 SERIES (1600 CFM) 5.1 AMP HEAVY DUTY PSC MOTOR

#### CX4000AM Series

#### Galvanized Steel Power Attic Ventilator

Galvanized steel dome, galvanized steel venturi construction. Available in mill, brown, black, and weathered grey.

#### CX4000AA Series

#### Aluminum Power Attic Ventilator

Duradome® spun aluminum, aluminum venturi construction. Available in mill, brown, black, and weathered grey.

### CX2001 SERIES (1400 CFM) 4.5 AMP HEAVY DUTY MOTOR

#### CX2001AM Series

#### Galvanized Steel Power Attic Ventilator

Galvanized steel dome, galvanized steel venturi construction. Available in mill, brown, black, and weathered grey.

#### CX2001AA Series

Duradome® spun aluminum, aluminum venturi construction. Available in mill, brown, black, and weathered grey.

### CX1000 SERIES (1080 CFM) 2.6 AMP HEAVY DUTY MOTOR

#### CX1000AM Series

#### Galvanized Steel Power Attic Ventilator

Galvanized steel dome, galvanized steel venturi construction. Available in mill, brown, black, and weathered grey.

#### Galvanized & Aluminum Dome Colors



Mill



Black



Brown



Weathered Grey

#### Aluminum Power Attic Ventilator

Model	CFM	Attic Size (sq ft)	Motor Amps	Intake (sq in)	Dome* Type	Warranty
CX3000	1400	2000	2.1 PSC	600	GS, AL	Lifetime
CX4000	1600	2400	5.1 PSC	600	GS, AL	5 yrs
CX2001	1400	2000	4.5	600	GS, AL	2 yrs
CX1000	1080	1600	2.6	600	GS	2 yrs

\*Dome Type: GS=Galvanized Steel, AL=Duradome™ Spun Aluminum

# WHOLE HOUSE FANS

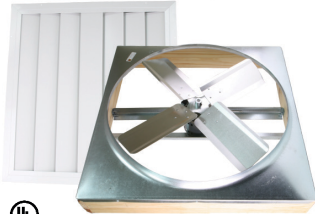
- Joist-in or joist-out installation
- 2-speed, thermally protected PSC motor
- Tough steel motor struts
- Precision-balanced aluminum fan blade assembly features 4 blades for greater air movement
- Steel venturi for enhanced durability

## CX BD SERIES BELT DRIVE WHOLE HOUSE FANS

**CX24BD2SPD**    24" Belt Drive  
4500 CFM (high) / 3100 CFM (low)

**CX30BD2SPD**    30" Belt Drive  
7800 CFM (high) / 5400 CFM (low)

**CX36BD2SPD**    36" Belt Drive  
9700 CFM (high) / 6800 CFM (low)



## CX DD SERIES DIRECT DRIVE WHOLE HOUSE FANS

**CX242DDWT**    24" Direct Drive  
4500 CFM (high) / 3100 CFM (low)

**CX302DDWT**    30" Direct Drive  
7500 CFM (high) / 5200 CFM (low)

Model	Square Footage of Living Area (or Attic Size if Multi-Story)
<b>CX24BDM-2SPD</b>	<b>up to 1800 sq ft (1 story)</b>
<b>CX30BD2SPD</b>	<b>2000 - 3000 sq ft (1 story)</b>
<b>CX36BD2SPD</b>	<b>over 3200 sq ft (1 story)</b>
<b>CX242DDWT</b>	<b>up to 1800 sq ft (1 story)</b>
<b>CX302DDWT</b>	<b>2000-3000 sq ft (1 story)</b>

**Whole House fans are designed for ceiling mount installations only. If you are seeking a fan for wall exhaust purposes, please see our industrial exhaust fan section.**





## STATIC VENTS

- Create constant airflow in the attic
- Save energy costs by reducing strain on heating/cooling systems
- Help prolong shingle life and protect roofing components

## EXHAUST VENTS

### VX25 SERIES

#### ROUND VENTS

#### **VX25 Galvanized Steel Round Vent**

163" Net Free Area. Galvanized steel dome. Available in mill, brown, black, and weathered grey.

#### **VX25 RG Round Vent with Rain Guard**

Galvanized steel dome with rain guard. Available in mill, brown, black, and weathered grey.

### SBV 603 SERIES

#### SLANT BACK VENTS

#### **SBV 603**

#### **Aluminum Slant Back Vent**

51" Net Free Area. Aluminum construction. Available in mill, brown, black, and weathered grey.

#### **SBV 603 GV**

#### **Galvanized Steel Slant Back Vent**

51" Net Free Area. Galvanized steel construction. Available in mill, brown, and black.

### SBV 40 SERIES

#### SLANT BACK VENTS

#### **SBV40**

#### **Galvanized Steel Slant Back Vent**

40" Net Free Area. Galvanized steel construction. Available in brown, black, and weathered grey.

### STV-51 SERIES

#### SQUARE TOP VENTS

#### **STV-51 Aluminum Square Top Vent**

51" Net Free Area. Aluminum construction. Available in mill, brown, black, and weathered grey.

#### **STV-51 GV Galvanized Steel Square Top Vent**

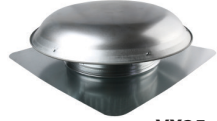
51" Net Free Area. Galvanized steel construction. Available in brown, and black.

### SBV 61 SERIES

#### LOW PROFILE SLANT BACK VENTS

#### **SBV 61 Polypropylene Low Profile Slant Back Vent**

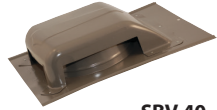
61" Net Free Area. Polypropylene plastic construction. Available in grey, brown, black, weathered grey, and white.



VX25



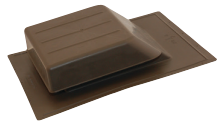
SBV 603



SBV 40



STV-51



SBV 61

Model	Base	Opening
VX25	25" x 25"	15" diameter
VX25RG	25" x 25"	15" diameter
SBV 40	14" x 16.75"	8.5" diameter
SBV 603, SBV 603 GV	16" x 20"	8" diameter
STV-51, STV-51 GV	16.5" x 17.5"	8" x 8"
SBV 61	17" x 18"	9" x 9"

# INTAKE VENTS

*Adequate intake vents are also a required component of all power and static ventilation systems.*

## WALL AND GABLE LOUVERS

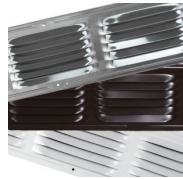
- SGV88 8" x 8" gable louver
- SGV1212 12" x 12" gable louver
- SGV1218 12" x 18" gable louver
- SGV1418 14" x 18" gable louver
- SGV1424 14" x 24" gable louver
- SGV1824 18" x 24" gable louver
- SWL2430 24" x 30" gable louver



*Aluminum. Most louvers available in mill and white.*

## SOFFIT AND UNDEREAVE VENTS

- CX8 Continuous Soffit Vent. 8' lengths.
- CX64 4" x 16" undereave
- CX68 8" x 16" undereave



*Aluminum. Most available in mill, brown, and white.*

## MINI VENTS

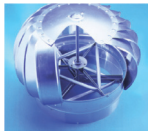
- MV1 1" aluminum, mill.
- MV2 2" aluminum, mill.
- MV3 3" aluminum, mill.
- MV4 4" aluminum, mill.



## WIND TURBINES

- Reduce attic temperatures by as much as 50° F in a matter of minutes.
- Zero energy costs
- Choice of internal or external bracing

Internally braced turbine



Externally braced turbine



## PREMIUM SERIES WIND TURBINES

- Premium aluminum construction with reinforced bracing
- Premium grade stainless steel ball bearing system
- Adjustable to a 12/12 pitch
- Limited lifetime warranty

*All Premium Series turbines comply with the Texas Department of Insurance's Building Specification for windstorm resistant construction. Also tested and approved by Queensland University.*

Model	Description
CX12IBAL	12" internally braced with base*
CX14IBAL	14" internally braced with base
CX12EBAL	12" externally braced with base

Premium turbines are available in a variety of colors. Add MIL (mill), BLK (black), BRN (brown), or WG (weathered grey) to the part number to designate your desired color.

**All turbines require a minimum 432 sq in intake ventilation for proper functioning. Please see the Intake Vents section for information on products that will help to meet these requirements.**

**Internally Braced Turbines**



**Mill**



**Black**



**Brown**



**Weathered Grey**

**Externally Braced Turbines**



**Mill**



**Black**



**Brown**



**Weathered Grey**

**STANDARD SERIES  
WIND TURBINES**

- Galvanized steel construction
- Co-polymer bearing system
- Adjustable to a 6/12 pitch

**All Standard Series turbines comply with the Texas Department of Insurance's Building Specification for windstorm resistant construction. Constructed to meet or exceed industry specifications and standards.**

<b>Model</b>	<b>Description</b>
<b>CX12IBGVT</b>	<b>12" top only (internally braced)</b>
<b>CX12IBGV</b>	<b>12" with base (internally braced)</b>
<b>CX14IBGV</b>	<b>14" with base (internally braced)</b>
<b>CX12BRGV</b>	<b>12" base/riser combo, mill (8-pack)</b>
<b>CX12EBGVT</b>	<b>12" top only (externally braced)</b>
<b>CX12EBGV</b>	<b>12" with base (externally braced)</b>

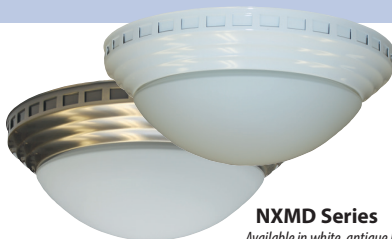
*\*Standard Series turbines are available in Mill color only.*



## BATH VENTILATION

### DESIGNER SERIES FAN-LIGHTS

Sophisticated elegance and powerful performance in one design



#### NXMD Series

Available in white, antique brass

- Bright light provided by two 60W incandescent bulbs or two compact fluorescent bulbs (not included)
- Designer frame available in two colors to fit any decor
- Powerful airflow performance from 50, 70, and 90 CFM models (3.0 to 4.5 sones)
- 1-year limited warranty

Model*	Bath Size	Other Rooms	CFM	Sones
NXMD501WH, NXMD501AB	45	60	52	3.0
NXMD701WH, NXMD701AB	65	85	70	4.5
NXMD901WH, NXMD901AB	85	110	90	3.5

\*WH = white, AB = antique brass

Designer frame: 14" diameter / Housing: 9" x 9 1/4" x 5 1/16"



### SH SERIES FANS AND FAN-LIGHTS

High Efficiency and Super Quiet

- High efficiency PSC motors
- Low sones
- Select models have humidistat which automatically turns fan on when humidity in room increases



### MS SERIES FANS AND FAN-LIGHTS

Square Grille, Economical Choice

- Powerful, quiet, and styled for good looks
- Gracefully curved grilles for efficient airflow



### CF SERIES FANS

Contractor Fans

- 50 CFM and 70 CFM models
- Plastic or optional metal duct collars

## BATH FAN COMPARISON CHART

	<b>Model</b>	<b>Bath Size (sq ft)</b>	<b>Other Rooms (sq ft)</b>	<b>CFM</b>	<b>Sones</b>	<b>Amps</b>	<b>Lamp Watts</b>
<b>M D  S E R I E S</b>	<i>NXMD501 (WH and AB units)</i>	45	60	52	3.0	0.80	60
	<i>NXMD701 (WH and AB units)</i>	65	85	70	4.5	0.88	60
	<i>NXMD901 (WH and AB units)</i>	85	110	90	3.5	0.55	60
<b>S H  S E R I E S</b>	<i>NXSH50</i>	45	60	53	0.8	0.30	-
	<i>NXSH80</i>	75	100	86	1.3	0.35	-
	<i>NXSH110</i>	105	135	114	2.0	0.40	-
	<i>NXSH130</i>	120	160	127	2.0	0.40	-
	<i>NXSH80L</i>	75	100	86	1.3	1.35	100
	<i>NXSH110L</i>	105	135	114	2.0	1.40	100
	<i>NXSH130L</i>	120	160	127	2.0	1.40	100
<b>M S  S E R I E S</b>	<i>NXMS50</i>	45	60	52	3.0	0.80	-
	<i>NXMS70</i>	65	85	70	4.5	0.88	-
	<i>NXMS90</i>	85	110	90	3.5	0.55	-
	<i>NXMS50L</i>	45	60	52	3.0	1.80	100
	<i>NXMS70L</i>	65	85	70	4.5	1.88	100
	<i>NXMS90L</i>	85	110	90	3.5	1.55	100
<b>C F  S E R I E S</b>	<i>NX503</i>	45	65	50	4.0	0.90	-
	<i>NX703</i>	65	85	70	5.5	1.80	-
	<i>NX504</i>	45	60	50	4.0	0.90	-
	<i>NX704</i>	65	85	70	5.5	1.80	-

## CONTRACTOR JOB PACKS

### "A" AND "B" PACKS

- Available in the CF, MS, and SH series
- Offer flexibility during rough-in and simplify upgrades

"A" Packs ( housings, duct collars, and wiring components) and "B" packs (motor and grille trim kits) are shipped in separate multi-packs to allow for easy storage and avoid loss or damage during installation.

Series	Rough-In Kit	Used With	Pack Qty
CF	NX503/703A	NX503B, NX703B	6
MS	NXM2001A	NXMS Series: 50B / 70B / 90B / 110B 50LB / 70LB / 90LB / 110LB	4
SH	NXS2001A	NXSH Series: 50B / 80B / 110B / 130B 50LB / 80LB / 110LB / 130LB	4



## CEILING RADIATION DAMPERS

- Removable damper assembly and sleeve to allow easy motor replacement
- UL approved non-asbestos insulation blanket
- Heat sensitive 165° F replaceable fusible link

Radiation dampers are ordered in 3 parts: housing, motor/grille assembly, and damper. Each part is available only in job packs.

### CF SERIES RADIATION DAMPERS - 6 pk

CFRD Dimensions	L	W	H
Radiation Damper	8 1/16"	7 5/8"	3 3/4"
Assembled Damper/Housing	8 1/16"	7 5/8"	7 1/4"

### MS SERIES RADIATION DAMPERS - 4 pk

NXMRD Dimensions	L	W	H
Radiation Damper	9 3/8"	9 1/2"	3"
Housing	9 1/4"	9 3/8"	5 5/8"
Assembled Damper/Housing	9 3/8"	9 1/2"	8"
Radiation Damper with Light	9 3/8"	9 1/2"	5 3/8"

### SH SERIES RADIATION DAMPERS - 4 pk

NXSRD Dimensions	L	W	H
Radiation Damper	11 3/8"	9 5/8"	4 1/4"
Housing	11 1/4"	9 1/2"	7 3/4"
Assembled Damper/Housing	11 3/8"	9 5/8"	11 3/8"

## SHOE AND BOOT DRYERS



- Quiet and energy efficient motor
- Inhibits bacteria growth
- Fully dries shoes in 2 hours
- Compact and detachable dryer ports

*Accommodates tall boots to small shoes and will even dry gloves*



Blue



Black

**Models:**

SD1001  
Blue DC Shoe Dryer

SD2001  
Black AC Shoe Dryer

## NON-HEATED SHOE AND BOOT DRYERS

### SD1001 DC Shoe Dryer

Best used for hiking boots, work and dress shoes, wading boots, tennis shoes, and athletic shoes. Will not harm technical fabrics or leather.

**Hiking Boots • Work Shoes • Wading Boots  
Tennis Shoes • Athletic Shoes**



*Dryer arms extend to dry tall wading boots and are durable enough to support heavy hiking or work boots while gentle enough to dry technical fabrics without damage*

## HEATED SHOE AND BOOT DRYERS

### SD2001 AC Shoe Dryer

Best used for winter sports shoes, shoes being dried in colder climates, or shoes that tend to get soaked often.

**Ski Boots • Padded Boots • Gloves**



*Dry gloves in the winter, as well as your ski boots and padded winter boots. Great for hard-to-dry shoes made of thicker materials, shoes that get wet often, or shoes being dried in harsher climates*

# HETR

## HEATING SOLUTIONS

BY **Ventamatic, Ltd.**  
AN AIR OF EXCELLENCE

### TOWER HEATERS

- Operates using radiant heat
- Requires no gas or other flammable fuels
- Outdoor rated for safe use in a variety of locations
- High efficiency carbon fiber heating element
- Anodized aluminum alloy frame for unparalleled durability
- Tip-over safety switch
- 1-year limited warranty



*Efficient carbon fiber heating element provides quick, reliable heat.*

Model	Height	Wattage	Weight
H1013	25"	900	10.5 lbs
H1014	35"	1200	28.5 lbs

*All tower heater models are ETL Listed.*



### PORTABLE UTILITY HEATER

- Built-in thermostat maintains a constant, comfortable room temperature
- Requires no gas or other flammable fuels
- Adjustable tilt control for customized heat
- Permanently lubricated motor
- Scratch and rust-resistant finish
- Auto-reset shuts off heater in unsafe situations

**Model:**

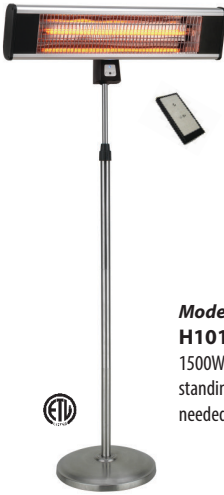
**H1017 12" Utility Heater**

12" high. 1500W convection heat. Great for shops, offices, and other small indoor applications. 1-year limited warranty.





## PEDESTAL HEATER



- *Requires no gas or other flammable fuels*
- *Stainless steel poles and base cover*
- *Anodized extruded aluminum alloy frame*
- *Aluminum reflector evenly concentrates heat outward*
- *High efficiency carbon fiber heating element*
- *Tip-over safety off switch*

**Model:**

**H1018 Patio Stand Heater**

1500W radiant heat. Requires no gas or other flammable fuels. Free standing design with adjustable height to bring warmth at the level it's needed most. 1-year limited warranty.

## WALL MOUNTED HEATERS

- *High rated aluminum reflector to concentrate heat outward*
- *Requires no gas or other flammable fuels*
- *Anodized extruded aluminum housing*
- *High efficiency carbon fiber heating element*
- *Secure locking system*
- *Includes remote control for easy on/off*

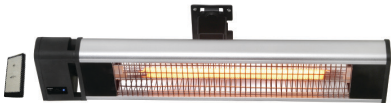
**H1016 Wall Mount Heater**

1500W radiant heat. 8 lbs. For use in areas where floor space is at a premium and the use of fuels or gas is difficult. 1-year limited warranty.



**H1019 Wall or Ceiling Mount Heater**

1500W radiant heat. 8 lbs. Perfect for outdoor lounges or indoor use in garages or workshops. 1-year limited warranty.



*All wall mount heater models are ETL Listed.*

## SEARCH. FIND. ORDER.

*It's that easy! Have an older fan that needs working parts?*

*We've got what you need, available for order and shipment via our easy-to-navigate online parts site. Our web site carries a full line of accessories and parts across all of our Ventamatic product lines and brands, right there at your fingertips!*



**From motors to support braces and more, we carry parts under the following categories:**

- **Power Attic Vents**
- **Barrel Fans**
- **Whole House Fans**
- **Industrial Fans**
- **NuVent**



*Scan this QR code with your smartphone to open our replacement parts page*



**Need assistance finding your part?**

**Call our customer service line at 800-433-1626.**

**Visit our replacement parts website at  
<http://www.bvcreplacement.com>**

## ABOUT OUR COMPANY

**VENTAMATIC, LTD.** has provided the ventilation industry with **AN AIR OF EXCELLENCE** for over 70 years.

A pioneer in the ventilation industry since 1948, Ventamatic, Ltd. manufactures high quality air delivery and air movement products for the residential, commercial, industrial, and agricultural markets.

## CONTACT LIST

Need more information? Use the contact methods below to keep in touch with us for the latest product updates.



Ventamatic, Ltd.  
P.O. Box 728  
Mineral Wells, TX 76068



800-433-1626 (Toll-Free)  
940-325-9311 (Fax)



<http://www.bvc.com>

## SOCIAL MEDIA



<http://www.facebook.com/ventamaticltd>



Subscribe for the latest videos

