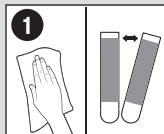
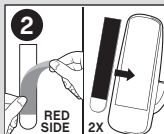
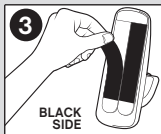


**3M**17004
command.com**To Apply**

1
CLEAN surface with isopropyl rubbing alcohol, wipe gently, let dry. Do not use household cleaners. SEPARATE strips.



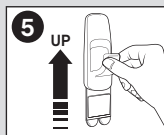
2
REMOVE RED liners. PRESS adhesive to hook. Repeat with second strip.



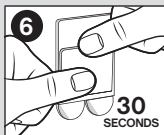
3
REMOVE BLACK liners.



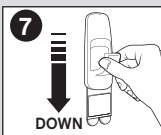
4
PRESS to surface for 10 seconds.



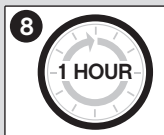
5
UP
↑
IMPORANT: For maximum holding strength slide hook off.



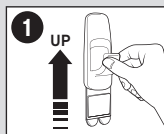
6
And press base FIRMLY for 30 seconds.



7
DOWN
↓
Slide hook ON.



8
Wait 1 hour before use.

To Remove

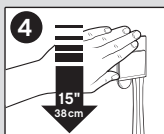
1
UP
↑
Slide hook up to remove from mounting base.



2
NEVER pull strip towards you.



3
STRAIGHT DOWN
↓
SLOWLY
Hold base gently to prevent base from snapping fingers. DO NOT press base against wall.



4
STRETCH STRAIGHT DOWN ALONG WALL AT LEAST 15 INCHES (38 cm) until base and strip release.

IMPORTANT: Failure to follow instructions carefully may cause damage!
SAVE INSTRUCTIONS for damage-free removal or visit command.com

For questions, ideas and special offers go to command.com

CAUTION:

DO NOT use with wallpaper. May not adhere well to vinyl surfaces. DO NOT use for antiques, heirlooms, or other valuable or irreplaceable items. DO NOT hang items over beds. Use only one hook per item hung.

NOTE:

Apply to surfaces above 50°F (10°C). Adhesive could lose adhesion above 105°F (40°C).

Not intended for picture hanging. Instead use Command® Picture Hanging Strips, Sawtooth or Wire-Backed Hangers.

Hook can be reused with Command® Large Strips.

U.S. Patent Numbers:
5,516,581
6,001,471
6,231,962

The following statements only apply to products distributed in the USA.

Limited Warranty:

This 3M product will be free from defects in material and manufacture. If this product is defective, your exclusive remedy shall be, at 3M's option, replacement of the product or refund of the purchase price.

Limitation of Liability:

3M will not be liable for any loss or damage arising from this product, whether direct, indirect, special, incidental or consequential.

Dist. By:

3M Construction and Home Improvement Markets Division
3M Center
St. Paul, MN 55144-1000
1-800-934-7355
command.com

Made in U.S.A. with U.S. and globally sourced materials.

3M and Command are trademarks of 3M.

© 3M 2010
All Rights Reserved.
34-8704-3127-6

