

---

*Comfort-Cure*®

---

**Owner's Manual**

**Dehumidifiers**  
without Pumps

BHD-301-J

BHD-501-J

BHD-701-J



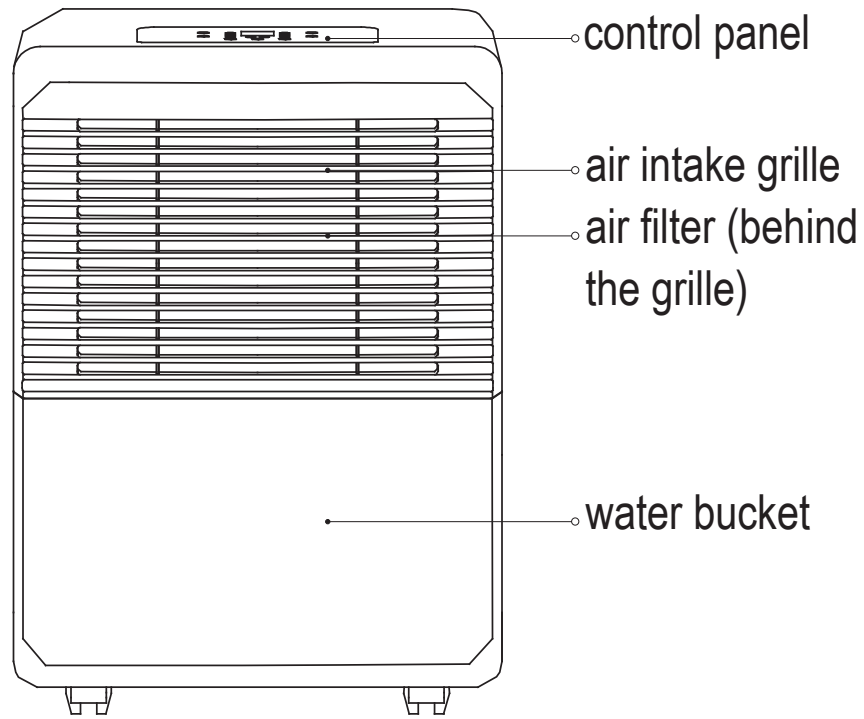
---

[www.marsdelivers.com](http://www.marsdelivers.com)

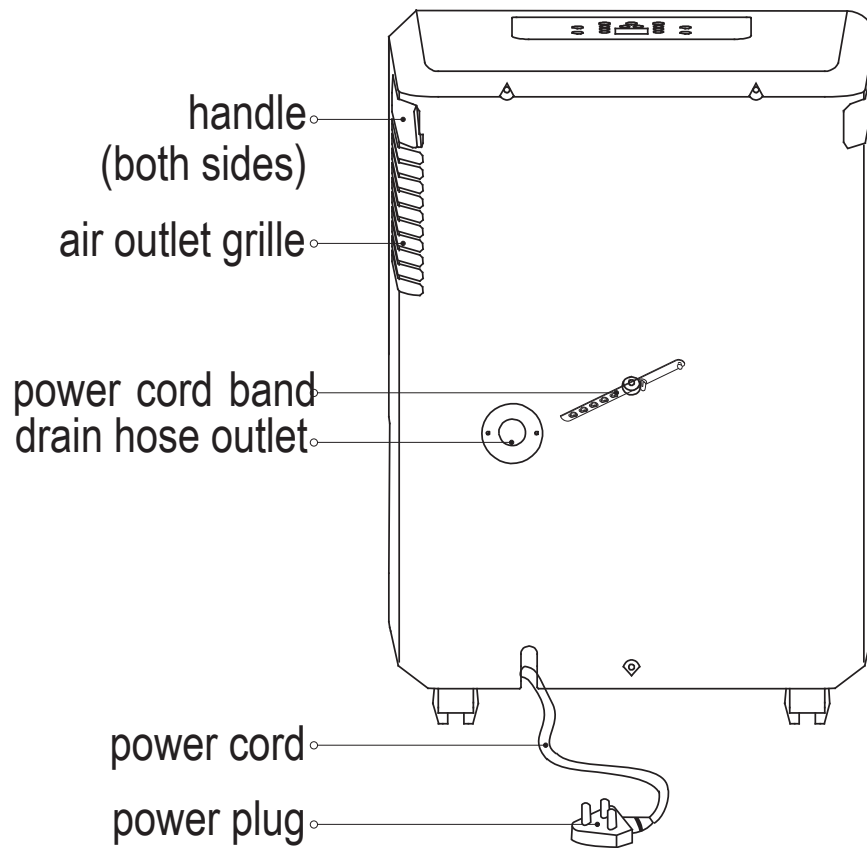
## Contents:

|                         |    |
|-------------------------|----|
| Preparation.....        | 3  |
| Safety Precautions..... | 5  |
| Cautions.....           | 7  |
| Operation.....          | 9  |
| Maintenance.....        | 13 |
| Fault Diagnosis.....    | 14 |

# | Preparation



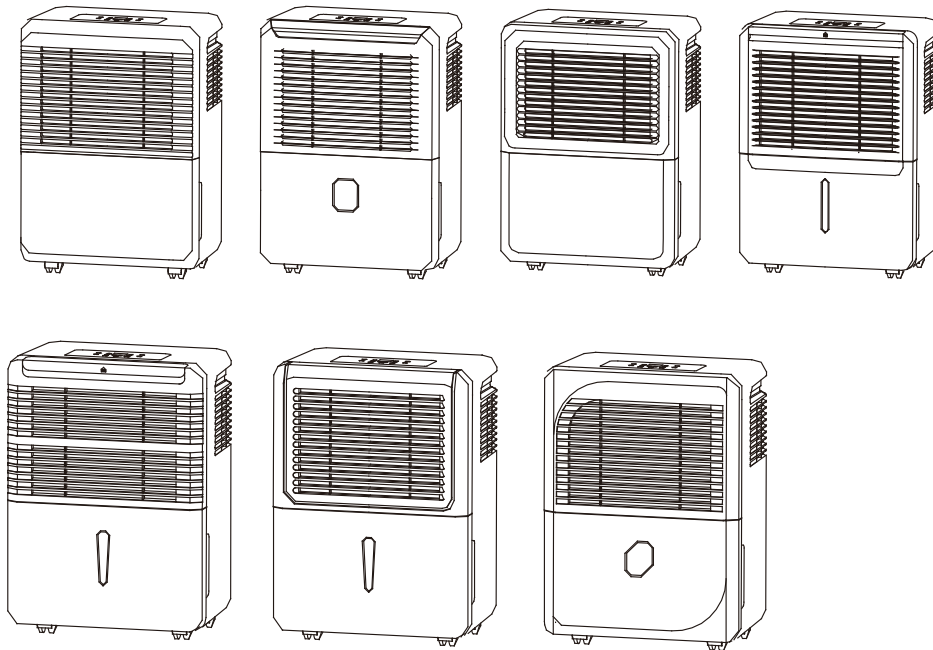
front



rear

## | Preparation

NOTE: The unit you purchased may look like one of the followings:




### NOTE:

All the illustrations in the manual are for explanation purposes only. Your machine may be slightly different. The actual shape shall prevail. The design and specifications are subject to change without prior notice for product improvement. Consult with the sales agency or manufacturer for details. Any updates to the manual will be uploaded to the service website, please check for the latest version.

- Fluorinated greenhouse gases are contained in hermetically sealed equipment. For specific information on the type, the amount and the CO<sub>2</sub> equivalent in tonnes of the fluorinated greenhouse gas (on some models), please refer to the relevant label on the unit itself.
- Installation, service, maintenance and repair of this unit must be performed by a certified technician.
- Product uninstallation and recycling must be performed by a certified technician.

## | Safety Precautions

 This symbol indicates that ignoring instructions may cause death or serious injury.

 **WARNING:** To prevent death or injury to the user or other people and property damage, the following instructions must be followed. Incorrect operation due to ignoring of instructions may cause damage injury or death.

- Before cleaning, turn off the power and unplug the unit.
- Do not use this machine near flammable gas or combustibles, such as gasoline, benzene, thinner, etc.
- Do not drink or use the water drained from this unit.
- Do not take the water bucket out during operation.
- Do not use this unit in small spaces.
- Do not put in places where water may splash onto the unit.
- Place this unit on a level, sturdy section of the floor.
- Do not cover the intake or exhaust openings with cloths or towels.
- Care should be taken when using this unit in a room with the following persons: infants, children, elderly people, or people sensitive to humidity.
- Do not exceed the rating of the power outlet or connection device.
- Do not operate or stop this unit by switching on or off the power supply.
- Do not damage or use an unspecified power cord.
- Do not modify power cord length or share the outlet with other appliances.
- Do not insert or pull out plug with wet hands.
- Do not install this appliance in a location that may be exposed to combustible gas.
- Do not place this unit near a heat source.
- Disconnect the power if strange sounds, smell, or smoke comes from it.
- You should never try to take apart or repair this unit by yourself.

## | Safety Precautions

**⚠ WARNING:** To prevent death or injury to the user or other people and property damage, the following instructions must be followed. Incorrect operation due to ignoring of instructions may cause damage, injury or death.

- Do not use in areas where chemicals are handled.
- Never insert your finger or other foreign objects into grills or openings. Take special care to warn children of these dangers.
- Do not place heavy objects on the power cord and take care so that the cord is not compressed or pinched.
- Do not climb on or sit on the unit.
- Always insert the filters securely. Clean filter once every two weeks.
- If water enters the unit, turn the unit off and disconnect the power, and contact a qualified service technician.
- Do not place flower vases or other water containers on top of the unit.
- Do not use extension cords.

### Electrical Information:

- The manufacture nameplate is located on the rear panel of the unit and contains electrical and other technical data specific to this unit.
- Be sure the unit is properly grounded. To minimize shock and fire hazards, proper grounding is important. The power cord is equipped with a three-prong grounding plug for protection against shock hazards.
- Your unit must be used in a properly grounded wall receptacle. If the wall receptacle you intend to use is not adequately grounded or protected by a time delay fuse or circuit breaker (please refer to the nameplate for the electrical data), have a qualified electrician install the proper receptacle.
- To avoid the possibility of personal injury, always disconnect the power supply to the unit, before installing and/or servicing.
- All wiring must be performed strictly in accordance with the wiring diagram located on the middle baffle of the unit (behind of the water bucket).

## | Cautions



### Cautions

- This appliance can be used by children aged from 8 years and above and persons with reduced physical, sensory or mental capabilities if they have been given supervision or instruction concerning use of the appliance in a safe way and understand the hazards involved. Children shall not play with the appliance. Cleaning and user maintenance shall not be made by children without supervision.
- If the supply cord is damaged, it must be replaced by the manufacturer, its service agent or similarly qualified persons in order to avoid a hazard.
- Prior to cleaning or other maintenance, the appliance must be disconnected from the power supply.
- Do not install the appliance in a location that may be exposed to combustible gas. If combustible gas accumulates around the unit, it may cause fire.

## | Cautions

### Cautions

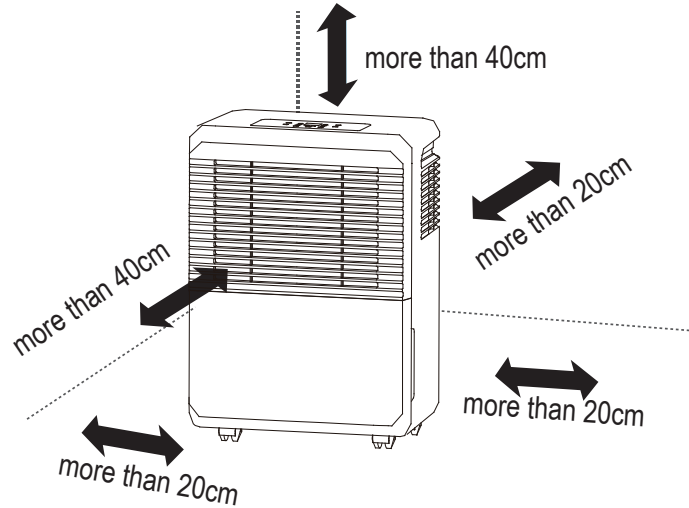
- If the appliance is knocked over during use, turn off the unit and unplug it from the main power supply immediately. Visually inspect the unit to ensure there is no damage. If you suspect the unit has been damaged, contact a technician or customer service for assistance.
- In a thunderstorm, the power must be cut off to avoid damage to the machine due to lightning.
- Do not run cord under carpeting. Do not cover cord with throw rugs, runners, or similar coverings. Do not route cord under furniture or appliances. Arrange cord away from traffic area and where it will not be tripped over.
- Do not operate unit with a damaged cord or plug. Discard unit or return to an authorized service facility for examination and/or repair.
- To reduce the risk of fire or electric shock, do not use this unit with any solid-state speed control device.
- This appliance shall be installed in accordance with national wiring regulations.
- Contact an authorized service technician for repair or maintenance of this unit.
- Turn off the product when not in use.
- The units circuit board (PCB) is designed with a fuse to provide overcurrent protection. The specifications of the fuse are printed on the circuit board, such as: T 3.15A/250V (or 350V), etc.



## | Operation

Place in a suitable environment

-This unit is designed to operate with a working environment between 5°C/41°F and 32°C/90°F, and between 30%(RH) and 80%(RH).



Casters(Installed at four points on the bottom of unit)

-Do not force casters to move over carpet, nor move the unit with water in the bucket.  
(The unit may tip over and spill water.)

NOTE: Casters are optional, some models without.

Smart functions:

-Auto Shut Off

When the bucket full indicator light illuminates or the humidity setting is reached, the unit will shut off automatically.

-Wait 3 minutes before resuming operation

After the unit has stopped, it can not restart operation for 3 minutes. This is to protect the unit. Operation will automatically start after 3 minutes.

-Auto Defrost

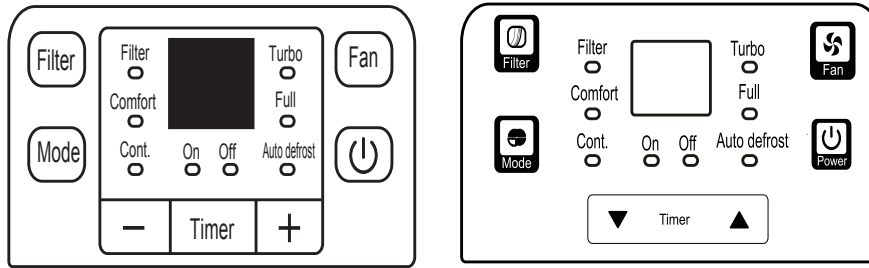
When frost builds up on the evaporator coils, the compressor will cycle off and the fan will continue to run until the frost disappears.

-Auto-Restart

If the unit shuts off unexpectedly due to power loss, it will restart with the previous function setting automatically when the power resumes.

## Operation

NOTE: The control panel may look like one of the following:



The indicator light illuminates when the function is selected.

### Filter Filter button

The check filter feature is a reminder to clean the Air Filter for more efficient operation. The Filter light (Clean filter light) will flash after 250 hours of operation. To reset after cleaning the filter, press the Filter button and the light will go off.

### Mode Mode button

Press to select the desired operation mode from Dehumidifying, Continuous dehumidifying and Comfort dehumidifying.

At Comfort dehumidifying mode, the unit will automatically control room humidity in a comfortable range 45%~55% according to the room temperature. The humidity setting function will be invalid.

Down/Up buttons

• Humidity Set Control Buttons

The humidity level can be set within a range of 35%RH (Relative

Humidity) to 85%RH (Relative Humidity) in 5% increments.

For drier air, press the Down button and set to a lower percent value(%).

For damper air, press the Up button and set a higher percent value(%).

• Timer Set Control Buttons

Press to initiate the Auto start and Auto stop feature, in conjunction with the Up and Down buttons.

## Operation

### Timer Timer button

- Press to initiate the Auto start and Auto stop feature, in conjunction with the UP and Down buttons.  
When the unit is on, first press the Timer button, the Timer Off indicator light illuminates. It indicates the Auto Stop program is initiated. Press again and the Time On indicator light illuminates. It indicates the Auto Start is initiated.
- When the unit is off, first press the Timer button, the TIMER ON indicator light illuminates. It indicates the Auto Start program is initiated. Press it again and the Time Off indicator light illuminates. It indicates the Auto Stop is initiated.
- Press or hold the UP or Down button to change the Auto time by 0.5 hour increments, up to 10 hours, then at 1 hour increments up to 24 hours. The control will count down the time remaining until start.
- The selected time will register in 5 seconds and the system will automatically revert back to display the previous humidity setting.
- When the Auto start & Auto stop times are set within the same program sequence, TIMER ON OFF indicator lights illuminate identifying both ON and OFF times are now programmed.
- Turning the unit ON or OFF at any time or adjusting the timer setting to 0.0 will cancel the Auto Start/Stop function.
- When LED display window displays the code of P2, the Auto Start/Stop function will also be canceled.

### Fan Fan button

Controls the fan speed. Press to select either High or Normal fan speed. Set the fan control to High for maximum moisture removal. When the humidity has been reduced and quiet operation is preferred, set the fan control to Normal.

### Power Power button

Press to turn the dehumidifier on and off.

### Indicator lights

 Filter light       Full Bucket full light

 Cont. Continuous dehumidifying light

 On Timer on light

 Off Timer off light

 Turbo High fan light

 Comfort Comfort dehumidifying light

 Auto defrost Auto defrost light

## Operation



### LED display

Shows the set % humidity level from 35% to 85% or auto start/stop time (0~24) while setting, then shows the actual ( $\pm 5\%$  accuracy) room % humidity level in a range of 30%RH(Relative Humidity) to 90%RH(Relative Humidity).

### Error Codes:

AS- Humidity sensor error.

ES- Temperature sensor error.

### Protection Codes:

P2- Bucket is full or not in right position-- Empty the bucket and replace the bucket in the right position.



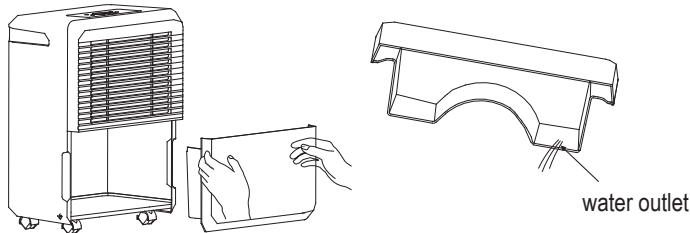
Note: When one of the above malfunctions occurs, turn off the unit, and check for any obstructions. Restart the unit, if the malfunction is still present, turn off the unit and unplug the power cord. Contact the manufacturer, its service agents or a similar qualified person for service.

### Removing the collected water

There are two ways to remove collected water:

#### 1. Use the bucket

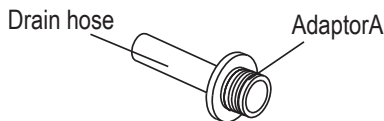
When the bucket is full, remove the bucket and empty it.



#### 2. Continuous draining

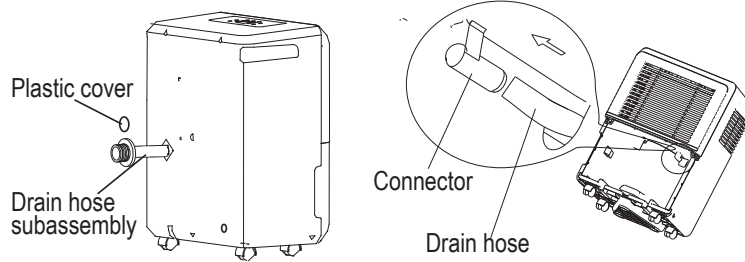
Water can be automatically emptied into a floor drain by attaching the unit with a water hose (ID $\geq\Phi$  5/16", not included) with a female threaded end (ID:M=1" , not included).

-Drain hose subassembly: Install the drain hose onto the adaptor A (placed in the bucket).



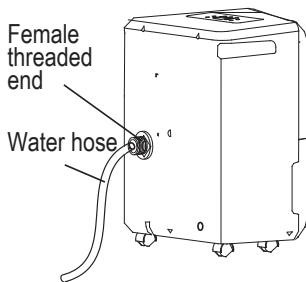
-Remove the plastic cover from the back drain outlet of the unit, set aside and remove bucket, then insert the drain hose through the drain outlet of the unit and securely press it into the connector on the front of the unit. Tighten the adapter A and the unit by using two screws (placed in the bucket).

## Operation



-Install the female threaded end of the water hose into the adaptor A, then lead the water hose to the floor drain or a suitable drainage point.

### NOTE:



- Make sure the connection is tight and there is no leak. Lead the water hose to the floor drain or a suitable -drainage facility, the drainage facility should be lower than the drain outlet of the unit.
- Be sure to run the water hose sloping downward to let the water flow out smoothly.
- When the continuous drain feature is not being used, remove the drain hose from the outlet.

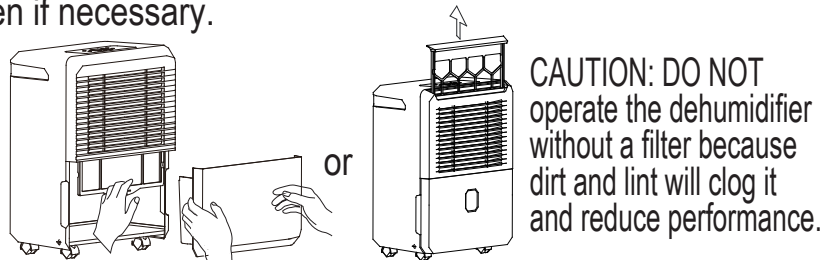
It is advised to run drain hose no farther than 6ft. with no rises or traps.

## Maintenance

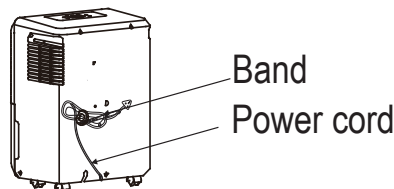
Care and cleaning of the dehumidifier

**WARNING:** Turn the dehumidifier off and remove the plug from the wall outlet before cleaning.

1. Clean the bucket. Clean the bucket with water every few weeks.
2. Clean the air filter. Clean the filter with water at least every 30 days or more often if necessary.



3. Store the unit



When not using the unit for long time periods

- After turning off the unit, wait one day before emptying the bucket.
- Clean the main unit, bucket and air filter.
- Wrap the cord and bundle it with the band.
- Cover the unit with a plastic bag.
- Store the unit upright in a dry, well-ventilated place.

## | Faults Diagnosis

Please check the machine according to the following form before asking for maintenance:

| Faults Diagnosis                               | What to check  |
|--|--|
| Unit does not start                            | <ul style="list-style-type: none"> <li>-Make sure the dehumidifiers plug is pushed completely into the outlet.</li> <li>-Check the house fuse/circuit breaker box.</li> <li>-Dehumidifier has reached its preset level or bucket is full.</li> <li>-Bucket is not in the proper position.</li> </ul>   |
| Dehumidifier does not dry the air as it should | <ul style="list-style-type: none"> <li>-Did not allow enough time to remove the moisture.</li> <li>-Make sure there are no curtains, blinds or furniture blocking the front or back of the dehumidifier.</li> <li>-The humidity selector may not be set low enough.</li> <li>-Check that all doors, windows and other openings are securely closed.</li> <li>-Room temperature is too low, below 5°C(41°F).</li> <li>-There is a kerosene heater or something giving off water vapor in the room.</li> </ul> |
| The unit makes a loud noise when operating     | <ul style="list-style-type: none"> <li>-The air filter is clogged.</li> <li>-The unit is tilted instead of upright as it should be.</li> <li>-The floor surface is not level.</li> </ul>   |
| Frost appears on the coils                     | <ul style="list-style-type: none"> <li>-This is normal. The unit has Auto defrost feature.</li> </ul>  |
| Water on floor                                 | <ul style="list-style-type: none"> <li>-Hose to connector or hose connection may be loose.</li> <li>-Intend to use the bucket to collect water, but the back drain plug is removed.</li> </ul>   |

Please request for repair if unit operates abnormally or does not operate, and the solutions above do not resolve the problem.

## LIMITED EXPRESS WARRANTY

Congratulations on purchasing your new HVAC equipment. It's been designed for long life and reliable service, and is backed by one of the strongest warranties in the industry. Your unit automatically qualifies for the warranty coverage listed below, providing you keep your proof of purchase (receipt) for the equipment and meet the warranty conditions.

### LIMITED ONE (1) YEAR EXPRESS WARRANTY

Comfort-Aire warrants this Room Air Conditioner to be free from defects in workmanship and materials for normal use and maintenance for one (1) year from the date of purchase by the original consumer. This Express Limited Warranty applies only when the Room Air Conditioner is installed and operated per Comfort-Aire installation and operating instructions for normal use.

### EXCEPTIONS

The Limited Express Warranty does not cover normal maintenance. Comfort-Aire recommends that regular inspection/maintenance be performed at least once a season. Additionally, labor charges, diagnostic charges, transportation charges for replacement of refrigerant or filters, and any other service calls/repairs are not covered by this Limited Warranty. It also does not cover any portion or component of the system that is not supplied by Comfort-Aire, regardless of the cause of failure of such portion or component.

### CONDITIONS FOR WARRANTY COVERAGE

Unit must be operated according to Comfort-Aire operating instructions included with the unit and cannot have been subjected to accident, alteration, improper repair, neglect or misuse, or an act of God (such as a flood)

- Serial numbers and/or rating plate have not been altered or removed
- Performance cannot be impaired by use of any product not authorized by Comfort-Aire, or by any adjustments or adaptations to components
- Damage has not been a result of inadequate wiring or voltage conditions, use during brown-out conditions, or circuit interruptions
- Air flow around any section of the unit has not been restricted
- Unit remains in the original installation

### DURATION OF WARRANTY & REGISTRATION

The warranty begins on the date of purchase by the original consumer. The consumer must retain a receipted bill of sale as proof of warranty period. Without this proof, the express warranty begins on the date of shipment from the factory.

### REMEDY PROVIDED BY THE LIMITED EXPRESS WARRANTY

The sole remedy under the Limited Warranty is replacement of the defective unit. Labor to diagnose and replace the defective unit is not covered by this Limited Express Warranty. If for any reason the replacement product is no longer available during the warranty period, Comfort-Aire shall have the right to allow a credit in the amount of the current suggested retail price of the product instead of providing replacement.

### LIMITATION OF LIABILITY

1. There are no other express or implied warranties. Comfort-Aire makes no warranty of merchantability. We do not warrant that the unit is suitable for any particular purpose or can be used in buildings or rooms of any particular size or condition except as specifically provided in this document. There are no other warranties, express or implied, which extend beyond the description in this document.
2. All warranties implied by law are limited in duration to the one-term of the warranty. **We will not be liable for any consequential or incidental damages caused by any defect in this unit.**
3. This warranty gives you specific legal rights and you may also have other rights which vary from state to state. Some states do not allow limitation on how long an implied warranty lasts or do not allow the exclusion or limitation of incidental or consequential damages, so the above limitations or exclusions may not apply to you.
4. No warranties are made for units sold outside the continental United States and Canada. Your distributor or final seller may provide a warranty on units sold outside these areas.
5. Comfort-Aire will not be liable for damages if our performance regarding warranty resolution is delayed by events beyond our control including accident, alteration, abuse, war, government restrictions, strikes, fire, flood, or other acts of God.

### HOW TO SUBMIT A WARRANTY CLAIM

If you have a warranty claim, notify your installer or dealer promptly.



Please visit  
[www.marsdelivers.com](http://www.marsdelivers.com)  
to register your new product

### KEEP THIS INFORMATION AS A RECORD OF YOUR PURCHASE

#### PRODUCT IDENTIFICATION

Model Number \_\_\_\_\_

Serial Number \_\_\_\_\_

Date of Purchase \_\_\_\_\_

#### INSTALLATION

Installer Name (if used) \_\_\_\_\_

Phone Number/Contact Information \_\_\_\_\_

Date Installation Completed \_\_\_\_\_

Remember to retain your bill of sale as proof of warranty period.

---

Due to ongoing product improvements, specifications and dimensions are subject to change and correction without notice or incurring obligations. Determining the application and suitability for use of any product is the responsibility of the installer. Additionally, the installer is responsible for verifying dimensional data on the actual product prior to beginning any installation preparations.

Incentive and rebate programs have precise requirements as to product performance and certification. All products meet applicable regulations in effect on date of manufacture; however, certifications are not necessarily granted for the life of a product. Therefore, it is the responsibility of the applicant to determine whether a specific model qualifies for these incentive/rebate programs.

*Comfort-Cire*<sup>®</sup>

1900 Wellworth Ave., Jackson, MI 49203 • Ph. 517-787-2100 • [www.marsdelivers.com](http://www.marsdelivers.com)

