

CARPENTER AIR TOOLS

Mini Palm Nailer



Model No. CMPN90

IMPORTANT:

Please read this manual carefully before using this product, and save it for reference.

**INSTRUCTION
MANUAL**

Safety Warning!



EYE PROTECTION which conforms to ANSI specifications and provides protection against flying particles from both the FRONT and SIDES should ALWAYS be worn by all individuals within the work area during the operation of the CMPN90.



CAUTION: Additional Safety Protection will be required in some environments. For example, the work area may include exposure to noise level which can lead to hearing damage. Some environments will require the use of hearing protection equipment. It is recommended that the user and others in the work area must use hearing protection conforming to ANSI Z89.1 standards.

Air Supply and Connections



- Do not use oxygen, combustible gases, or bottle gases as a power source for this tool as tool may explode, possibly causing injury.
- Do not use air supply sources which can potentially exceed 200 P.S.I.G. as tool may burst possibly causing injury.
- The connector on the tool must not hold pressure when air supply is disconnected. If a wrong fitting is used, the tool can remain charged with air after disconnecting and thus will be able to drive a fastener even after the air line is disconnected possibly causing injury.
- Always disconnect air supply: 1. Before making adjustments. 2. When servicing the tool. 3. When clearing a jam. 4. When tool is not in use. 5. When moving to a different work area.

Hoses:

Air hoses should have a minimum of 150 P.S.I (106 kg/cm²) working pressure rating or 150 percent of the maximum pressure that could be produced in the air system. The supply hose should contain a fitting that will provide "quick disconnecting" from the male plug on the tool.

Regulator:

A pressure regulator with an operating pressure of 0-125 P.s.i. (0-8.79 kg/cm²) is required to control the operating pressure for safe operation of this tool.

Operating Pressure:

70-100 P.S.I. (4.8 -6.9 kg/cm²). Select an operation pressure within this range for best performance. DO NOT EXCEED THE RECOMMENDED OPERATING PRESSURE.

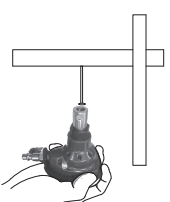
Operation



Do not drive fasteners on top of other fasteners or with the tool at an overly steep angle as this may cause deflection of fasteners which could cause injury. Do not attempt to drive fasteners into materials that are too hard to penetrate. Do not drive fasteners close to the edge of the work piece as the wood may split, allowing the fastener to be deflected possibly causing injury. Do not operate tool in explosive atmospheres, such as in the presence of flammable liquids, gases, or dust. This tool is capable of producing sparks which could ignite dust or fumes. Place nail into the tool only after air source is fully connected. Do not use a tool that is leaking or has missing or damaged parts. Inspect work piece and work area carefully for hidden wiring or gas lines. Driving fasteners into live wires or gas lines could result in electrical shock, or result in an explosion.



1. Hold tool as shown.
2. Position nail in line with desired fastening direction. Gently push nailer against nail head to activate. The nailer will automatically stop when the nail is driven completely.
3. Drive fasteners into work surface only; never into materials too hard to penetrate.



Note: If the tool is dropped after the air supply is shut off, the internal cycling mechanism may assume mid-cycle position. When resupplied with air, the tool will remain inoperative and leak air. To reset the internal valve, abruptly slap the tool cap with the palm of the hand to jar the valve into proper position.

Maintaining The Pneumatic Tool

When working on air tools, note the warnings in this manual and use extra care evaluating problem tools.

Replacement Parts:

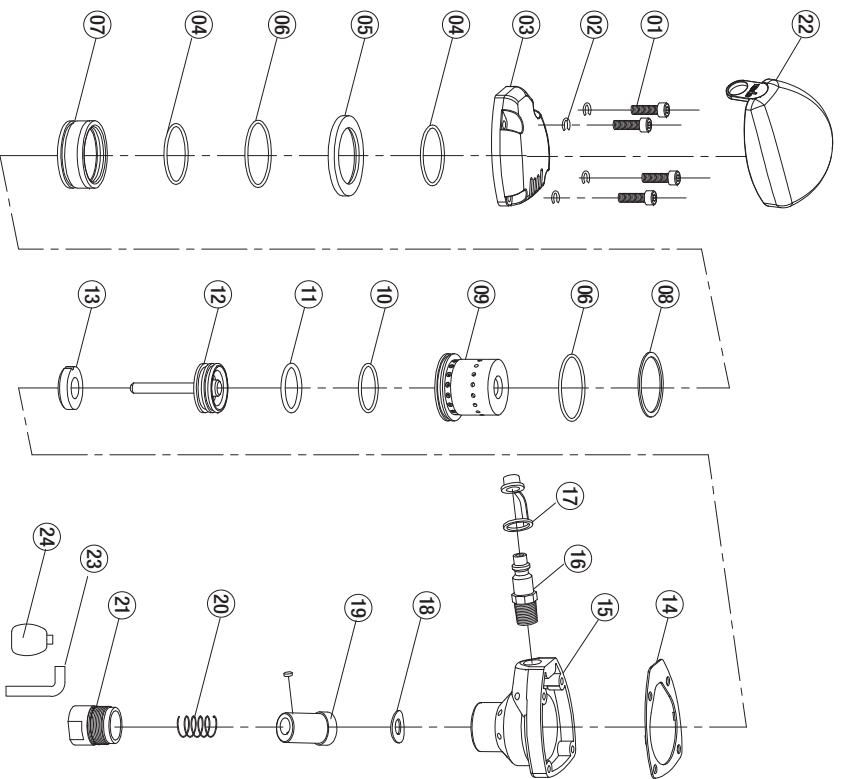
Use only Carpenter replacement parts. Do not use modified parts or parts which will not give equivalent performance to the original equipment. When repairing a tool, make sure the internal parts are clean and lubricated.

Lubrication:

Frequent, but not excessive, lubrication is required for best performance. Add oil during use into the air fitting on the tool once or twice a day. Only a few drops of oil at a time is necessary. Use Carpenter Air Tool Lubricant or equivalent. Do not use detergent oil or additive as these lubricants will cause accelerated wear to the seals and bumpers in the tool, resulting in poor tool performance and frequent tool maintenance.

Cold Weather Operation:

Near and below freezing, moisture in the air line may freeze and prevent tool operation. Do not store in a cold weather environment to prevent frost or ice formation. Frost and ice on the tools operating valves and mechanisms could cause tool failure. NOTE: Some commercial air line drying liquids are harmful to "O" rings and seals—Do not use these low temperature air dryers without checking compatibility.



No.	Description	Qty.	No.	Description	Qty.
1	Hex. Socket HD. Bolt M5X18	4	14	washer	1
2	Spring washer	4	15	gunbody	1
3	Exhaust Cover	1	16	Air inlet plug 1/4"	1
4	O-ring 33.6X1.8	2	17	Dust Cap	1
5	Gasket	1	18	washer	1
6	O-ring 37.5X1.8	2	19	collar	1
7	bushing	1	20	collar spring	1
8	sealing washer	1	21	Thread bushing	1
9	Cylinder	1	22	Cover sleeve	1
10	O-ring 26.5X1.8	1	Standard accessory		
11	O-ring 25X2.4	1	23	Hex wrench M5/4mm	1
12	Piston	1	24	Oil pot	1
13	Piston Bumper	1			

