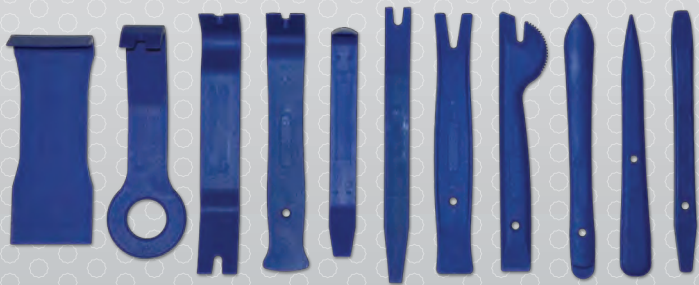




Cal-Van TOOLS

A LEADER IN SPECIALTY TOOL DESIGN
AND MANUFACTURING SINCE 1939

2017 PRODUCT CATALOG





For over 60 years, professional mechanics and serious do-it-yourselfers have depended on the quality and innovation of Cal-Van Specialty Tools. Cal-Van Tools is the automotive specialty hand tool brand of Horizon Tool Inc., located in Greensboro, North Carolina. Horizon Tool provides solutions to major hand tool manufacturers and distributors all over the world.

Cal-Van Tools is committed to providing excellence through a continued focus on these core company values:

Be a Solution Provider: We are focused on what today's technician needs to make jobs easier and faster.

Honor and respect Relationship: "The Golden Rule" – At Cal-Van Tools we keep our commitments to our customers and our working partners. We believe in joint success.

Act with Integrity: If it is wrong, we don't do it.

Customer Focused and Customer Driven: We uphold accountability to our customer's best interests. We are constantly seeking what customers want and need.

We will continue to expand our tool line in the future to meet the needs of the changing tool market.

Cal-Van's goal: Our innovation drives your profits.



TABLE OF CONTENTS

Engine	8
Electrical and Diagnostic	18
Brake Tools	22
Oil Filter & Lube	28
General Tools	32
Pullers & Installers	38
Suspension & Wheel	42
Paint, Body & Scrapers	48

WARRANTY POLICY

Cal-Van Tools are engineered and manufactured to the highest quality standards. Most tools are backed by a Limited Lifetime Warranty which guarantees tools from manufacturing and material defects. Any tool which fails to perform under normal use can be returned to the point of purchase for warranty. It is Cal-Van Tools' option to replace or repair any tool found defective in workmanship or material.

This warranty does not apply to tools that are worn beyond their serviceable life, abused, altered or misused in any way. This warranty does not apply to wearable items, including, but not limited to: hone stones, razor blades, bulbs, files, snap rings, dies, re-threaders, drills or cutting tools.

This warranty gives you specific legal rights and you may also have other rights which vary from state to state.

TABLE OF CONTENTS

A

AC Belt Installation Tool	
AmpAlert	
AmpHound 2	
AmpHound	
All Purpose Awl	
Drive Adapters	
Versa-Drive	
Front Wheel Drive Axle Nut Socket Set	
Metric Axle Nut Socket Set	
Alternator Pulley Service Kit	
Five Piece ADP Kit	
Master Alternator Pulley Service Kit	
Twin Spin Drive Converter	

B

BMW Oil Cooler Line Pliers	
Battery Terminal Clamp Spreader	
Battery Terminal Bolt Pliers	
Battery Post & Terminal Brush	
Universal Brake Pad Spreader	
Disc Brake Pad Spreader	
Disc Brake Piston Remover	
Brake Bleeder Tank	
Adjustable Brake Piston Tool	
Brake Caliper Turn Back Tool	
2-Pin Brake Rewind Tool	
3-Pin Brake Rewind Tool	
Magnetic Bit Holder	
Bearing Splitter	
Breaker Bar	
Bushing Driver Set	
Ball Joint Removal & Installation Kit	
Ball Joint Super Set	
Adjustable Bearing, Seal Driver	
Wheel Bearing Tool	
Body Dent & Seal Puller	
Body Clip Pliers	
Recessed Body Clip Pliers	
Caliper Turn & Push-Back Tool	
Parts Cleaning Brush	

C

Heavy Duty Circuit Tester	
Caliper Turn & Push-Back Tool	
Ratcheting Chain Wrench	
Inside & Outside Caliper	
Coil Spring Compressor	
Coil Spring Clamps	
Cup Type Oil Filter Wrench	
Aluminum Diecast Filter Wrenches	

D

17	Master Disconnect Set	13
19	Line Quick Disconnect Tools	13
19	Fuel Line Disconnect Tools	13
20	Heater Hose Disconnect Set	13
37	Drain Plug Repair Kit	31
36	In-Line Dowel Pin Puller	32
36	Drive Light	33
45	Disc Brake Pad Spreader	21
45	Disc Brake Piston Remover	21

E

50		
50		
52	Engine Cylinder Hone	14
35	Extended Razor Blade Scraper	48
	Spiral Screw Extractor Set	34
	Fluted Screw Extractor Set	34
	Stripped Hex Screw Removers	36

F

16		
18		
18		
21	Ford Triton Spark Plug Thread Repair Kit	8
21	Three Valve Ford Triton Insert Kit	8
21	Replacement Inserts 3 valve	8
22	Ford Triton Spark Plug Extractor	8
22	Ford Triton Spark Plug Extractor	8
22	Ford Triton Broken Spark Plug Set	9
22	Face-Groove Pulley-Puller	16
22	Ford Radio Remover Tool	18
22	Master In Line Flaring Tool Kit	24
33	In-Line Flaring Tool	24
34	In-Line Flaring Tool Metric	24
35	In-Line Flaring Tool SAE	24
44	Hydraulic In-Line Flaring Tool	24
46	Bubble & ISO In-Line Flaring Kit	25
46	In Line 4.75mm Bubble Flaring Kit	25
46	Brake Line Flaring Tool	25
46	Double Flaring Tool	25
47	Metric Double Flaring Tool	25
47	Tube Service Kit	26
47	Double & Bubble Flare Tool	26
21	Metric Bubble Flaring Tool Kit	26
37	Ford Fuel Filter Wrench	31
	Finger Socket Driver 3-Pack	32
	Mini Finger Ratchet	32
18	Finger Ratchet	32
21	Finger Bit Driver	32
27	Flange Type Axle Puller	38
33	Front End Service Kit	42
43	Flange Type Axle & Hub Puller	42
43	Finger Bit Driver Merchandisers	53
29	Fuel Line Disconnect Tools	13
29	Mercedes Fuel Line Pliers	17

TABLE OF CONTENTS

G

GM Thermostat Wrench	
90 Degree Gearless Angle Drive	
45 Degree Gearless Angle Drive	
GM & Chrysler Harm. Balancer Puller	

H

GM & Chrysler Harm. Balancer Puller	
Master Harmonic Balancer	
Long Reach Harmonic Balancer Installer	
Harmonic Balancer Installer	
Replacement Stone Medium	
Replacement Stone Fine Grit	
Replacement Stone Coarse Grit	
Adjustable Cylinder Hone Deglazer	
Replacement Stone Medium Grit	
Hose Clamp Pliers	
Disc Brake & Small Engine Hone	
Disc Brake & Caliper Hone	
Adjustable Brake Cylinder Hone	
4-in-1 Hone Set	
Sub Compact Brake Cylinder Hone	
Replacement Stones 1-1/8-in	
Stripped Hex Screw Removers	
Harmonic Balancer Puller	
Hub Puller	
Hub Tool	
Dodge Adapter for Hub Tool	
Heater Hose Disconnect Set	
Engine Cylinder Hone	

I

High Energy Ignition Tester	
Ignition Point Files	
Inner Tie Rod Removal Tool	

K

Monster Knife	
Monster Knife 4-Pack Merchandiser	
Mini Razor Knife - 30 Pack Merchandiser	
Mini Razor Knife	

L

4WD Locknut Socket Set	
Long Reach Harmonic Balancer Installer	

M

Mercedes Fuel Line Pliers	
2" Round Telescoping Mirror	
Rectangular Telescoping Mirror	
MacPherson Strut Tool	

M

17 Mini Scraper	48
35 Four Piece MorTorq Set	51
35 Mini-Scraper Merchandisers	53
10 Finger Bit Driver Merchandisers	53
Monster Knife 4-Pack Merchandiser	53
Mini Razor Knife - 30 Pack Merchandiser	53

N

10 Noid Light Set	9
-------------------	---

O

14 Oxygen Sensor Socket Set	11
14 Oxygen Sensor Wrench	12
14 12 & 6 Point Flexible Oxygen Sensor Wrench	12
16 Truck & Tractor Oil Filter Pliers	28
22 Oil Filter Pliers	28
23 Adjustable Oil Filter Pliers	28
23 Cup Type Oil Filter Wrench	29
23 Aluminum Diecast Filter Wrenches	29
23 Deluxe Strap Oil Filter Wrench	29
23 Strap Oil Filter Wrench	29
36 4-In-1 Swivel Oil Filter Wrench	30
38 Swivel Truck Oil Filter Wrenches	30
42 XL Swivel Truck Oil Filter Wrench	30
44 Heavy Duty Truck Oil Filter Wrenches	30
44 Swivel Oil Filter Wrenches	30
13 Three Legged Spider Oil Filter Wrench	31
14 Three Legged Oil Filter Wrench	31
Euro / GM Oil Socket Set	28
Ford Fuel Filter Wrench	31

P

42 Piston Ring Compressor Set	14
Power Steering Pump Removal & Installer	17
Parts Cleaning Brush	37
Pilot Bearing Puller	38
49 Pilot Bearing Puller w/Slide Hammer	38
53 Two-Jaw Pullers	39
53 Two & Three Jaw Combination Pullers	39
49 Adjustable Puller	39
Bar Type Puller & Bearing Separator Set	40
9-Way Slide Hammer Puller Set	41
44 Heavy Duty U-Joint Puller	41
10 Pitman Arm Puller	42
Poly Guard Blades	48
Wood Handle Putty Knife / Scraper	49
Putty Knife / Scraper Set	49
17 Face-Groove Pulley-Puller	16
37 Subaru Puller Tool	16
37 Truck & Tractor Oil Filter Pliers	28
43 Oil Filter Pliers	28

TABLE OF CONTENTS

G

GM Thermostat Wrench	
90 Degree Gearless Angle Drive	
45 Degree Gearless Angle Drive	
GM & Chrysler Harm. Balancer Puller	

H

GM & Chrysler Harm. Balancer Puller	10
Master Harmonic Balancer	10
Long Reach Harmonic Balancer Installer	10
Harmonic Balancer Installer	10
Replacement Stone Medium	14
Replacement Stone Fine Grit	14
Replacement Stone Coarse Grit	14
Adjustable Cylinder Hone Deglazer	14
Replacement Stone Medium Grit	14
Hose Clamp Pliers	16
Disc Brake & Small Engine Hone	22
Disc Brake & Caliper Hone	23
Adjustable Brake Cylinder Hone	23
4-in-1 Hone Set	23
Sub Compact Brake Cylinder Hone	23
Replacement Stones 1-1/8-in	23
Stripped Hex Screw Removers	36
Harmonic Balancer Puller	38
Hub Puller	42
Hub Tool	44
Dodge Adapter for Hub Tool	44
Heater Hose Disconnect Set	13
Engine Cylinder Hone	14

I

High Energy Ignition Tester	18
Ignition Point Files	18
Inner Tie Rod Removal Tool	42

K

Monster Knife	49
Monster Knife 4-Pack Merchandiser	53
Mini Razor Knife - 30 Pack Merchandiser	53
Mini Razor Knife	49

L

4WD Locknut Socket Set	44
Long Reach Harmonic Balancer Installer	10

M

Mercedes Fuel Line Pliers	17
2" Round Telescoping Mirror	37
Rectangular Telescoping Mirror	37
MacPherson Strut Tool	43

M

Mini Scraper	17	48
Four Piece MorTorq Set	35	51
Mini-Scraper Merchandisers	35	53
Finger Bit Driver Merchandisers	10	53
Monster Knife 4-Pack Merchandiser		53
Mini Razor Knife - 30 Pack Merchandiser		53

N

Noid Light Set	10	9
----------------	----	---

O

Oxygen Sensor Socket Set	14	11
Oxygen Sensor Wrench	14	12
12 & 6 Point Flexible Oxygen Sensor Wrench	14	12
Truck & Tractor Oil Filter Pliers	16	28
Oil Filter Pliers	22	28
Adjustable Oil Filter Pliers	23	28
Cup Type Oil Filter Wrench	23	29
Aluminum Diecast Filter Wrenches	23	29
Deluxe Strap Oil Filter Wrench	23	29
Strap Oil Filter Wrench	23	29
4-In-1 Swivel Oil Filter Wrench	36	30
Swivel Truck Oil Filter Wrenches	38	30
XL Swivel Truck Oil Filter Wrench	42	30
Heavy Duty Truck Oil Filter Wrenches	44	30
Swivel Oil Filter Wrenches	44	30
Three Legged Spider Oil Filter Wrench	13	31
Three Legged Oil Filter Wrench	14	31
Euro / GM Oil Socket Set		28
Ford Fuel Filter Wrench		31

P

Piston Ring Compressor Set	42	14
Power Steering Pump Removal & Installer		17
Parts Cleaning Brush		37
Pilot Bearing Puller		38
Pilot Bearing Puller w/Slide Hammer		38
Two-Jaw Pullers		39
Two & Three Jaw Combination Pullers		39
Adjustable Puller		39
Bar Type Puller & Bearing Separator Set		40
9-Way Slide Hammer Puller Set		41
Heavy Duty U-Joint Puller		41
Pitman Arm Puller		42
Poly Guard Blades		48
Wood Handle Putty Knife / Scraper		49
Putty Knife / Scraper Set		49
Face-Groove Pulley-Puller	17	16
Subaru Puller Tool	37	16
Truck & Tractor Oil Filter Pliers	37	28
Oil Filter Pliers	43	28
Adjustable Oil Filter Pliers		28

38900 Ford Triton Spark Plug Thread Repair Kit

Designed to aide in repairing Ford Modular Cylinders Heads.

- A quality, foolproof repair system that is cost effective and fast.
- High quality oversized steel alloy insert will repair other inserts that fail and has no ill effects from heat transfer.
- Total labor time as short as 25 mins.
- Works with Ford Triton Motors (1996 - 2003).
- M14 x 1.25
- Patented.



389-100 Replacement Inserts

39300 Three Valve Ford Triton Insert Kit

- The Three Valve Ford Triton Insert Kit is designed to aid in the repair of 3-valve 5.4 L and 6.8 L engines built before 10/9/07 and 3-valve 4.6 L engines built before 11/30/07 found in many 2004–2008 Ford, Lincoln and Mercury.
- In above models, the spark plug tends to break off in the cylinder head during maintenance. If this problem is not repaired properly it can result in damaged or unusable spark plug threads and in extreme cases the possibility of a spark plug blow out.
- This kit will allow the user, with simple step by step instructions, to repair those damaged threads or blowouts in 30 minutes or less per cylinder.



393-100 Replacement Inserts for 39300

39100 Ford Triton Spark Plug Extractor

This new item works to extract frozen and broken off spark plug sleeves in 2004 to present Ford Triton Engines.

- Specially machined guide works with extra long tap and extractor to make sure the job is done right.
- This is a heavily requested application that will only get more popular.



39200 Ford Triton Spark Plug Porcelain Extractor

This tool is used to extract the broken porcelain from broken spark plugs in 2003 to current Ford Triton Engines.

- In some cases the porcelain will break off in the sleeve and will need to be extracted in order for the 39100 to function effectively.
- Unlike other tools that tell you to push the porcelain through the sleeve (Ford says specifically not to do this), this tool adheres to the porcelain using a special perma-bond and then allows a user to extract the broken porcelain from the sleeve.



38300 Ford & Mazda Camshaft Alignment Kit

For Servicing the Timing Belt, Chains, Head Gaskets or Other Valve Train Repairs on Ford, Mercury and Mazda Vehicles.

Applications: The camshaft bar and easy alignment tool are used on 2.0L DOHC Zetec engines found in 1994-2003 Ford and Mercury vehicles and 2004-2012 2.5L DOHC, 2.3L DOHC 4V and 2.0L DOHC engines that are found in Ford, Mercury and Mazda vehicles. Easy alignment tool takes place of pins needed in similar tools. Pins can be hard to access and add time to job in cases where other components are needed. Also with pins user error can lead to pins being bent and stuck. Easy alignment tool is screwed into sparkplug hole and turned by wrench to align cams.



39500 Ford Triton Spark Plug Porcelain and Sleeve Extractor

- This Tool is used to extract the broken porcelain or seized sleeves from broken spark plugs in 2003 to current Ford Triton Engines.
- In some cases the porcelain will break off in the sleeve and will need to be extracted in order for the 39500 to function effectively.
- Unlike other tools that tell you to push the porcelain through the sleeve (Ford says specifically not to do this), this tool adheres to the porcelain using a special perma-bond and then allows a user to extract the broken porcelain from the sleeve.
- In combination with the porcelain extractor, this combo tool also works to extract frozen and broken off spark plug sleeves for the same model Ford Triton Engines.
- Specially machined guide works with extra-long tap and extractor to make sure the job is done easily and quickly.



65 Noid Light Set

- Noid Lights provide the technician a convenient, quick and easy method for detecting an electrical signal at the fuel injector.
- Performing the test with this tool is easy. Plug in the Noid Light and start the engine. If the Noid Light flashes, then this indicates that there is current available to the injector.
- This comprehensive kit of eight Noid Lights cover applications for many popular makes including GM PFI, Bosch PFI, Ford TBI, Geo TBI, GM SCPI and GM TBI.
- The kit includes a convenient harness extension design for remotely viewing from the driver's seat.



386 GM & Chrysler Harmonic Balancer Puller

Designed for removing damper pulleys in tight engine compartments without removing the radiator.

Kit contains the 3-jaw puller, four lengths of forcing rods, a forcing screw with a 3/8" square drive for ratchet use, and a 3/4" hex for wrench or socket use. Applications include:

- GM 2000 Generation III 4.8L, 5.3L, 5.7L, 6.0L, and 8.1L V8s.
- Cadillac 4.5, 4.6, and 4.9L V8s beginning in 1988.
- Chevrolet trucks 2003–later 4.2L I6, 2004–current 3.5L I5 and 2005–current 2.8L I4.
- Chrysler engines from 1990–later, including 2.0L, 2.4L-4s; plus 2.5L, 2.7L, 3.3L, 3.5L, and 3.8L V6s.
- Ford 1995–later V8 engines with 3 spoke pressed on damper.
- Mitsubishi Eclipse 1995–1999 2.0L DOHC non-turbo.



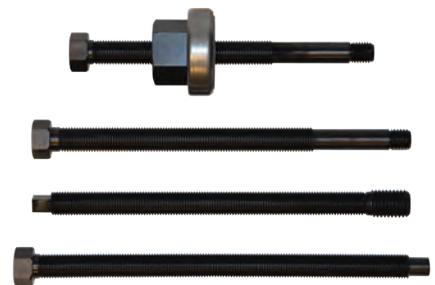
38500 Master Harmonic Balancer & Pulley Installer

- This comprehensive set works as a traditional harmonic balancer installer and also works on long reach applications such as under-drive pulleys and recessed crank threads on Dodge, Hemi, GM Gen III/IV and Ford 4.6 and 5.4 modular engines.
- This kit will also work on most European vehicles including BMW and VW as well as Toyota, Honda, Kia, and Hyundai.
- Features 12 standard adapters and 4 Long reach adapters.



38700 Harmonic Balancer Installer

- The Long Reach Balancer / Pulley Installer is a kit for installing harmonic balancer pulleys on many popular late model Ford, GM, Dodge and Chrysler vehicles.
- Works on V6 and V8 engines that have recessed threads for the crank pulley bolt or utilize an under-drive pulley or both.



38800 Harmonic Balancer Installer

- A must to properly install harmonic balancers or drive pulleys that are pressed on one or two groove pulleys on the crankshaft.
- Instructions Included.
- Use with Cal Van 189, Harmonic Balancer Puller / Remover.



841 Oxygen Sensor Removal & Installation Set

This versatile 11-piece set is used for the for the installation and removal of oxygen sensors on most domestic and import vehicles, and includes the most popular sizes of oxygen sensor sockets.

The Set Includes:

- 1/2" Dr x 29mm x 6pt x 90mm
- 3/8" Dr x 7/8" x 6pt x 90mm
- 1/2" Dr x 27mm x 12pt x 78mm
- 3/8" Dr x 7/8" x 6pt x 80mm
- 3/8" Dr x 1" & 1-1/16" x 74mm
- 1/2" Dr x 7/8" x 50mm
- 3/8" Dr x 7/8" x 50mm
- 1/2" Dr x 1" Hex x 7/8" 6pt
- 1/2" Dr x 22 x 6pt x 88mm
- 3/8" Dr x 22 x 6pt Offset Deep O2
- M18 x 1.5 Spark plug chaser
- Blow Mold Case



842 Seven Piece Oxygen Sensor Socket Set

A comprehensive socket set that enables technicians to easily install or remove oxygen sensors, vacuum switches and oil pressure sending units on a wide variety of domestic vehicles and imports.

This versatile set includes SAE and metric sockets for the most common applications:

- 7/8" - Vacuum Switch Socket
- 7/8" - Oxygen Sensor Socket (Short)
- 7/8" - Oxygen Sensor Socket (Long)
- 1" - Oil Pressure Sending Unit Socket
- 1-1/16" - Oil Pressure Sending Unit Socket
- 27 mm - Oil Pressure Sending Unit Socket
- 29 mm - Vacuum/Pressure Switch Socket



980 Crank Bolt Socket Set

Deep counter-weighted sockets to add more torque to break loose stubborn crank bolts, specifically for Honda and Toyota. The set includes 17mm 19mm 21mm.

- Honda/Acura® models: Accord®, Civic®, Pilot®, CRV®, Odyssey®, CL, TL, Integra®, MDX® vehicles
- Toyota/Lexus® models: Camry®, Corolla®, 4Runner®, Sequoia®, ES300, LS400 vehicles
- Any vehicle with a 17, 19, or 21 mm crank bolt



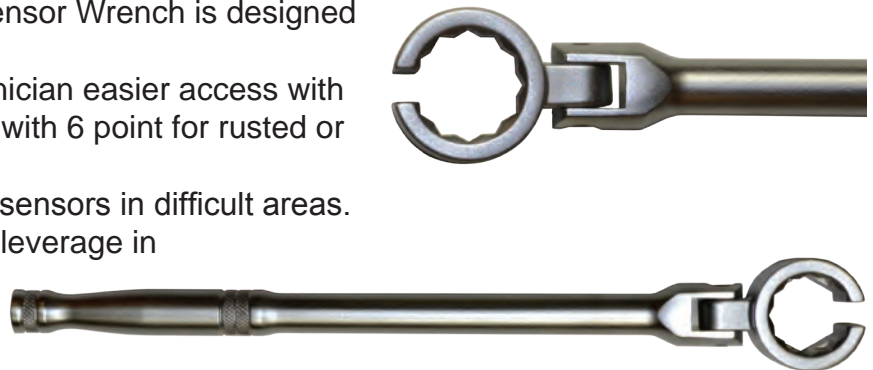
843 Oxygen Sensor Wrench

- Flex head offers essential clearance for removal or installation of oxygen sensors when it is positioned upward and inward to the floorboard or when leverage is needed around an exhaust pipe.
- Designed for all oxygen sensors with 7/8" hex.
- Works on: Ford Contours, 4.6L and 5.4L Ford Modular engines.
- 7/8" and 22mm knock sensors used on mid-sized trucks, SUVs and vans.



844 12 & 6 Point Flexible Oxygen Sensor Wrench

- The 12 & 6 Point Flexible Oxygen Sensor Wrench is designed for use with most oxygen sensors.
- Double sided design allows the technician easier access with the 12 point socket and more torque with 6 point for rusted or stubborn sensors.
- Gives technicians access to remove sensors in difficult areas.
- Offset design allows more room and leverage in confined areas.



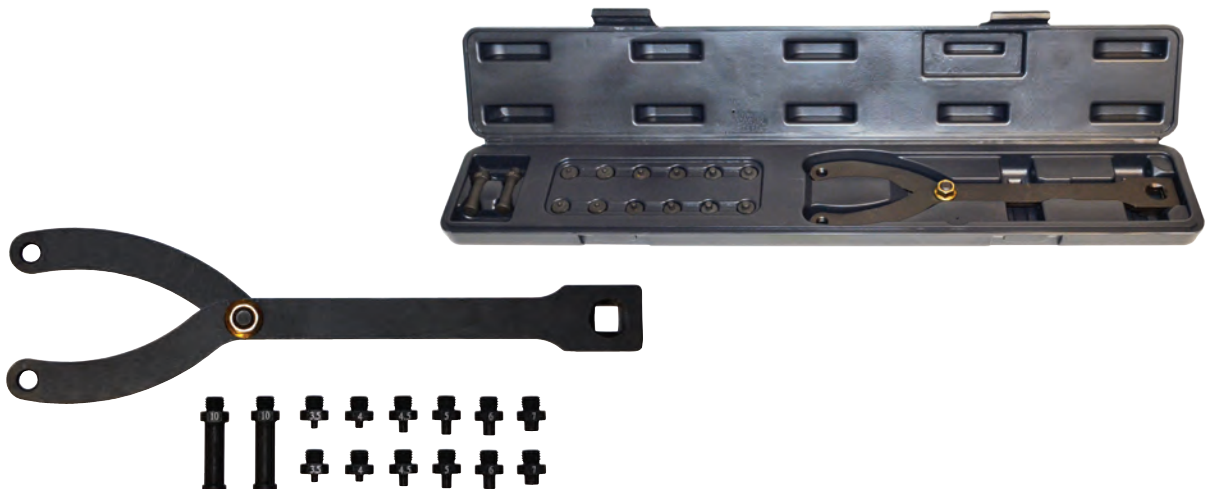
752 Variable Pin Spanner Wrench

The universal design of this wrench ensures that it will fit on a wide variety of pulleys that feature holes or slots, including both crankshaft and camshaft pulleys.

This versatile wrench is widely adjustable from 1 1/4" up to 5" Use with a 1/2" drive ratchet or breaker bar.

The tool accommodates the most common metric size pin configurations, including:

- 3.5 mm Pin
- 4 mm Pin
- 4.5 mm Pin
- 5 mm Pin
- 6 mm Pin
- 7 mm Pin
- 10 mm Pin



683 Master Disconnect Set

- No more random disconnect tools laying around to be lost, all your disconnect needs in one place.
- The most complete disconnect set on the market.
- Comes in a heavy duty case for easy access and easy storage.



684 Line Quick Disconnect Tools

- For spring lock coupling/ snap lock air conditioning lines, late model fuel lines and automatic transmission cooler lines found on GM, Ford, and Chrysler vehicles.
- Six popular sizes fit the following tubing O.D. sizes: 5/16" (8mm), 3/8" (9mm), 1/2" (13mm), 5/8" (16mm), 3/4" (19mm), and 7/8" (22mm).
- Also works on Ford transmission and radiator cooler lines.
- Color coded and stamped with tool size for quick identification.



230TNZ Fuel Line Disconnect Tools

- These fuel line service tools were designed to remove stubborn fuel lines from today's cars & trucks.
- Made of aircraft grade aluminum. This makes them very light and strong.
- Opening is 3/4" and tapers down to 1/8" This allows a universal application with just two tools.
- Patent Pending.



244TNZ Four Piece Heater Hose Disconnect Set

- Thicker than most hose disconnect tools, so you don't get hung up or break the connector.
- 40 degree offset designed for jobs up against the firewall or in tight spaces.
- Similar tools may have handles that get in the way, our low profile design does not.
- Set of four will cover all your quick connect hose needs.
- Patent Pending.



641 Piston Ring Compressor Set

- Seven piece set installs piston rings from 2-7/8" to 4-3/8" (73mm to 111mm).
- Works both vertically and horizontally.
- Set includes fine tooth ratcheting pliers for accurate compression and 6 interchangeable bands.
- Interchangeable Bands: No. 641-1 Band Size 2-7/8" to 3-1/8" No. 641-2 Band Size 3-1/8" to 3-3/8" No. 641-3 Band Size 3-3/8" to 3-5/8" No. 641-4 Band Size 3-5/8" to 3-7/8" No. 641-5 Band Size 3-7/8" to 4-1/8" No. 641-6 Band Size 4-1/8" to 4-3/8".



360 Engine Cylinder Hone, 2" - 7"

- Extremely versatile hone for 2" to 7" (56mm-178mm) diameter cylinders found on cars, trucks, buses, tractors, industrial engines and small air cooled engines.
- Adjustable to all diameters within its range.
- Includes with 4" (102mm) Medium Grit Stones.
- Operated with high or low speed drill.

Replacement Stones:

361 Replacement Stone Medium Grit, 220-240 Grit, Set of three

361-01 Replacement Stone Fine Grit, 400 Grit, Set of three

361-02 Replacement Stone Coarse Grit, 100 Grit, Set of three



32300 Adjustable Cylinder Hone Deglazer, 2" - 5"

Replacement Stones:

32400 Replacement Stone Medium Grit

16000 Radiator Hose Pinch Off Pliers

- Eliminates the need to drain systems when servicing cooling systems.
- Pliers squeeze heater or radiator hoses shut and jaws swivel for parallel clamping.
- Automatic locking ratchet.
- May also be used to pinch off vacuum lines and fuel lines.
- Caution: Not for use on wire reinforced radiator hoses.



16500 Heavy Duty Pinch Off Pliers

- Designed for use on wire reinforced radiator hoses.



734 The Grabber Serpentine Belt Tool

- Clamping jaw allows user to position serpentine belt without the belt slipping out of the tool.
- Tru-grip and long reach allows belt routing in tight access areas that would normally be difficult or impossible.
- Body made of light weight alloy steel for durability and strength.
- Ergonomic handle provides comfort and ease in use, acting as an extension of the users hand.
- Patent Pending.



735 Euro Stretch Belt Installation Tool

- Larger with different pin configuration to accommodate larger pulleys with different designs found on many European vehicles.
- Quickly and easily installs stretch belts.
- Will not damage stretch belts during installation.
- Eliminates the belt tensioner.
- Installation can be difficult because if the belt is twisted it can be damaged. This tool prevents that potential damage.
- Patented.



736 Stretch Belt Installation Tool

- Quickly and easily installs stretch belts.
- Will not damage stretch belts during installation.
- Eliminates the belt tensioner.
- Installation can be difficult because if the belt is twisted it can be damaged. This tool prevents that potential damage.
- Patented.



737 Subaru Belt Tool

- All 2008 to current models of Subaru Impreza, Outback, and Forester feature a stretch belt.
- When replacing these belts, due to access issues, traditional tools and even current "stretch belt tools" will not work.
- Only tool on the market for this job.



738 Serpentine Belt Tool Set

Fits tensioner pulleys with 13mm-16mm, 18mm hex or 3/8" and 1/2" square drives. For hard to access tensioners; there are 13mm and 15mm 12-point wrenches built into the handle. 13mm, 14mm and 15mm crows foot wrenches also included.



59 Hose Clamp Pliers

- Special tip designed to grip almost any hose clamp from any direction.
- Locking ratcheted jaws enable user to keep pliers locked onto clamps.
- Extra-long reach, 11" overall length.



181 Face-Groove Pulley-Puller

- This tool is designed for removing drive pulleys with face grooves.
- The tool removes a pulley absolutely free of any risk of damage.
- Adjustable legs allow adaptation to different pulley diameters.
- For removing pulleys with 3, 6, 9 slots.
- Range is 42mm to 82mm.



198 Subaru Puller Tool

- This tool is designed to hold the harmonic balancer for removal and installation.
- Eliminates the need to remove the radiator to make space for an impact wrench.
- Time is saved by not having to refill and bleed the air out of the cooling system when changing a timing belt.
- Applications: 1.8L, 2.2L, 2.2L Turbo, and 2.5L Subaru motors.



685 BMW Oil Cooler Line Pliers

- Releases the hydraulic cooling lines that connect to the transmission.
- BMW Applications: E46, E53, E65, E66, E85, R50, R53.



689 Mercedes Fuel Line Pliers

These pliers are designed for quick connect, slide and lock couplers found on European and domestic vehicle fuel lines.

- Applications include Audi, GM, Mercedes including M-Class, Toyota and VW models.
- Also can pull fuel and vacuum hoses on Mercedes models.



732 AC Belt Installation Tool

Used for the installation of AC Belts on BMW cars.

- Specifically crafted for BMW years 2006 - 2010 & 2012 - 2015.
- Designed for use on BMW V8 N62 vehicles.



195 Power Steering Pump Pulley Removal & Installer

This kit has nearly everything you need to remove and install power steering pump pulleys in Chrysler, Ford, and GM vehicles with Saginaw, Thompson, and Ford C111 and C2 power steering pumps.

Fits 1-1/8", 1-1/4", 1-5/16" and 1-3/8" pulley hub diameters, including the following:

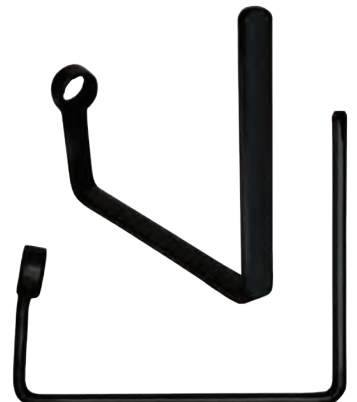
- 1988–Newer GM cars equipped with Quad 4 engines
- 1991–94 GM 3.1L V6; 1991–Newer 3800 V6 engines
- 1992–Newer Ford Crown Victoria and Mercury Grand Marquis with 4.6 V8 engine
- 1994–Newer GM 3100 V6
- 1997–Newer Ford Truck with 4.2 & 4.6 V6, 5.4 V8, and 6.8 V10 engines
- 1999–Newer GM 3400 V6



751 GM Thermostat Wrench

The GM Thermostat Wrench is designed to work on GM 3.1 & 3.4 liter V6 engines. A common job on these motors is thermostat replacement and to do this you must remove the thermostat housing. In these applications the bottom housing bolt is almost inaccessible without removing other parts - until now.

Our GM thermostat wrench, with its unique shape and design, will allow users to remove and install the housings in a fraction of the time. The wrench is a 13 mm, 12 point with special bends specifically for GM V6 thermostat housings.



64 High Energy Ignition Tester

- Safely checks for spark on any ignition system or engine with 1 to 12 cylinders.
- Simply attach spark plug wire to tester and clip tester to engine. Crank the engine and check for the presence of spark.
- Sealed chamber reduces risk of fire around high pressure fuel injection systems or marine use.



70 Heavy Duty Circuit Tester

- Tests 6-12-24 volt AC or DC systems for open, grounded or short circuits.
- 60" 16 gauge wire with heavy duty ground clip.
- No. 67-01 two replacement indicator bulbs.



135 Ford Radio Remover Tool

- Tool inserts into holes on radio face to release retaining clips.
- Fits Ford vehicles 1987 - current.
- Makes removal fast and easy.



549 Battery Terminal Clamp Spreader

- Designed to both spread battery cable clamp and clean terminal in one swift operation.
- Forged and heat treated jaws.
- 7-1/2" overall length.



553 Heavy Duty Battery Post & Terminal End Brush

- This heavy duty battery post and clamp cleaning brush is designed with tapered bristles to clean posts and terminal ends quickly and safely.
- Metal case.



693 Ignition Point Files

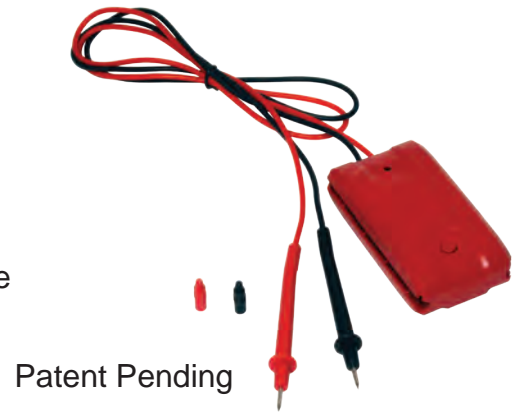
- Quality double cut ignition files guaranteed to file tungsten and platinum contact points.
- Made of super hard, high quality steel with Rockwell hardness of 65.



69 AmpAlert

Instant Parasitic Drain Finder

- Tool used to detect parasitic drain without removing a fuse from the fuse box.
- Simply touch probes to the top of the fuse and tool gives off a distinct audible tone when parasitic drain (current) is detected.
- A huge time saver for the technician. Cuts troubleshooting time by up to 90%.
- Avoid blown multi-meter fuses.
- Resolution down to 5 milliamps.



Patent Pending

72 AmpHound 2

Amp Hound 2, the Amp Meter for fused circuits.

CONVENIENT: Attach adapter to fuse or just touch the probes to the top of the fuse.

AUDIBLE: Tone lets you know when you are touching a fuse. No guesswork, no need to stare at the meter. This makes working in under-the-dash fuse boxes much simpler.

FUSE TYPES: Works on new fuse types Mini-LP and Micro-Fuse, along with three of the most common automotive fuses types: Mini, Standard and Maxi with all of the most common ranges.

SAFE: No chance of shorting a circuit while the fuse is removed.

- Real time readings of current and amps in fused circuit without removing fuse.
- Special fuse adapters lock on to fuse to give user hands free control.
- Includes all features from original Amp Hound that allows easy component testing and parasitic drain location.
- Takes amperage readings without having to access hard to reach components.
- Patent Pending.



73 Ripple 'Quik' Tester

- The Ripple Quik Tester is designed to easily and efficiently test alternators for a variety of issues, including ripple, through the DC outlet (cigarette lighter).
- Allows the user to test an alternator for bad diodes, bad stators, and intermittent diodes or stators without ever lifting the hood.
- Simply plug the tester into the vehicles DC port and the tester will give results in a series of LED flashes to pinpoint exact problem.
- Many late model vehicles have access issues when it comes to the engine compartment, this tool will greatly decrease the time spent troubleshooting.



Patent Pending



74 Amp Hound

Amp Hound, designed to drastically reduce the time needed to determine the amount of current in a fused circuit. The Amp Hound can determine the amount of current in a fused circuit without removing the fuse. Not only will this save the time needed to remove the fuse, configure the tool, read the current and replace the fuse, it will also solve the problem of inadvertently resetting parasitic drains.

The Amp Hound also makes it possible to “sniff out” current in an entire fuse block in a matter of seconds. Some of its many uses include finding parasitic drain, measuring amp draws on hard to reach fuse boxes, quickly identify circuit locations by Amp draw, etc.

- Absolutely the fastest way to measure current!
- Find current in all ATM, ATO, and MAXI type fuses (most accurate on 5 -50 Amp sizes).
- Can detect currents as low as 5mA, easily find any parasitic drain.
- Never pull a fuse again to read the current.
- Audible beep instantly tells you if there is any current in any circuit and provides “No Look” effortless operation.
- Great for those under-dash fuse panels.
- The tool is battery operated with an automatic shut-off.
- Use standard test leads to touch the top of the fuse.
- Patent Pending.



76 Relay Circuit Pro

The 76 Deluxe 12/24 Volt Relay Tester is a tool that can test an entire circuit from the battery to the component in question, as well as determining if the relay itself is functioning properly. This tool gives the technician the ability to instantly determine the problem within a tested circuit. It will identify at the push of a button if a wire, a part, or a relay is defective, without the use of a multi-meter. If the technician wishes to gain more information about the problem, the tool also features easily accessible ports for use with other diagnostic tools. This tester also has other practical uses. Since the item can jump the relay, the technician can use it as a remote control starter in engine work like

compression testing, distributor or cam shaft adjusting, or to run the compressor during an A/C charge.

- Kit includes the tester, 6 popular relay connectors, 1 universal relay lead.
- Comes in a blow molded case with a high density foam insert.
- Works with both 12 and 24 volt systems.
- Patented.



63 Window Tint Meter

Measures the total amount of Visual Light Transmission (VLT) through a window treated with aftermarket window tint film.



36700 Two"-One S-Cam Brake Tool

The 2"-1 S-Cam Brake Tool offers technicians a more efficient method for changing brake shoes on an S-Cam drum brake assembly. The tool is comprised of a steel shaft with a U-shaped fork on one end to stretch the retaining spring so that both halves of the brake shoes are held together, which enables the user to hook up the pin. An S-shaped device on the opposite end enables the user to position the brake shoes in a way that allows leverage for installation of the rollers. The hooked end pulls the brake shoes apart so that the rollers can be installed faster and more safely.



364 Toyota Brake Spring Tool

- Special tip is designed to engage the shoe hold down spring cup on Toyota vehicles.
- This application requires a lower profile brake spring tool with more a longer reach. The user can put the tip of this tool through the access hole and engage the spring cup on 2000 and current Tacoma, Tundra, FJ Cruiser, 4Runner, Land Cruiser, and Camry.



700 Universal Brake Pad Spreader

- Allows installer to easily compress both pistons at once and facilitates both single and dual piston applications.
- Usage for Ford F150 & F250, Ford & GM front wheel drive vehicles.



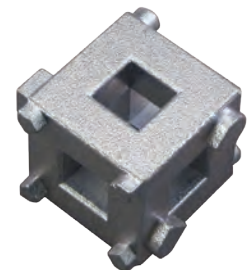
702 Disc Brake Pad Spreader

- Facilitates the quick and easy changing of disc brake pads.
- Spreader will compress inner pad and reset piston for easy pad replacement.
- Heavy duty construction.



722 Disc Brake Piston Remover

- Rotates the parking brake activated piston back into caliper cylinder when replacing worn pads.
- Used on most import, Ford, Chrysler and some GM vehicles equipped with four wheel disc brakes.
- Use with 3/8" drive.



727 Universal Caliper Turn & Push-Back Tool

Compresses any size brake caliper, from motorcycles, standard size cars, trucks and SUVs, and even 18 wheelers. A 3/8" ratchet can be inserted on the end of the tool for ease of use. Can also perform front brake jobs by flipping the head around.



855 Brake Bleeder Tank

- Light weight and easy to use.
- Portable tank fills and bleeds both standard and power brakes in a single operation.
- Tank is easily pressurized with just a few strokes of the built-in hand pump, eliminating the need for a compressor.
- One (1) gallon capacity, features extra long hose, quick disconnect coupler, shut off valve, and pressure gauge.



723 Two and Three Pin Adjustable Brake Piston Tool

The tool is designed to rotate brake pistons back into the caliper on vehicles with self adjusting parking breaks. This single tool replaces kits that contain up to 20 parts by having universally adjustable 2 and 3 pin configurations.

The tool fits on a standard 1/4" ratchet or breaker bar and works on both right and left hand pistons. It will work on most domestic and import vehicles that have self adjusting parking breaks.



724 Brake Caliper Turn Back Tool

This adapter kit allows you to rewind the pistons in brake calipers, and works by allowing the rotation of the piston at the same time as pushing the piston back into the caliper.

Applications include: Alfa Romeo, Audi, Citroen, Ford, Honda, Jaguar, Land Rover, Mazda, Mercedes, Mini, Mitsubishi, Nissan, Lancer, Toyota, VW, Volvo.

725 2-Pin Brake Rewind Tool

Min 2 Side: .830" Diameter
Max 2 Side: 1.600" Diameter



726 3-Pin Brake Rewind Tool

Min 3 Side: .750" Diameter
Max 3 Side: 1.600" Diameter

357 Disc Brake & Small Engine Hone

- Adjustable tension flex shaft cylinder hone covers 1-1/4" to 3-1/2" (32mm-89mm) diameter cylinders.
- Use on most compact cars, as well as cycles, lawnmowers, and outboard motors.
- Includes three(3) 2" (51mm) medium grit stones.
- To hone disc brake cylinders larger than 1 1/4" (32mm), Order No, 358-1 Fine Grit Stones (Not included).

Replacement Stones:

357-1 Replacement Stones 2" (51mm) Medium Grit, 220-240 Grit, Set of 3

357-3 Replacement Stones 2" (51mm) Fine Grit, 400 Grit, Set of 3

358-1 Replacement Stones 3/4" (19mm) Fine Grit, 400 Grit, Set of 3



358 Disc Brake & Caliper Hone

- Equipped with special size Fine Grit Stones to hone disc brake calipers providing that the diameter of the bore is not increased over .002 inch(.5mm).
- Adjustable tension, capacity 3/4" to 2 1/2"(19mm-64mm).
- Includes three(3) 3/4" (19mm) Fine Grit Stones.

Replacement Stones:

358-1 Replacement Stones 3/4" (19mm) Fine Grit, 400 Grit, Set of 3



362 Adjustable Brake Cylinder Hone

- Finest "full range" hone on the market covers sizes from 3/4" to 2-1/2" (19mm-64mm).
- Knurled nut controls tension for honing, deglazing throughout full range.
- Hones clear to end in step-cut and blind end cylinders.
- Flexible shaft for easy use right on car.
- Includes three(3) 1 1/8" (29mm) medium grit stones.

Replacement Stones:

363 Replacement Stones 1 1/8"(29mm) Medium Grit, 220-240 Grit Set of 3

363-01 Replacement Stones 1 1/8"(29mm), Fine Grit, 400 Grit, Set of 3

363-02 Replacement Stones 1 1/8"(29mm), Coarse Grit, 100 Grit, Set of 3



33000 4-In-1 Hone Set

The 4"-1 Hone set includes 3 complete hones and a set of 2" stones.

- Hone for 3/4" – 2-1/2" capacity, 1-1/8" medium grit stones. Used for brake master cylinders and wheel cylinders.
- Hone for 1/2" - 1-3/4", 1-1/8" capacity, medium stones. Used for small auto brake wheel cylinders.
- Hone for 1 1/4" – 3-1/2" capacity, 3/4" medium grit stones. Used for disc brake caliper and lawn and garden. Also used with 2" stones for small engine cylinder.



762 Sub Compact Brake Cylinder Hone

- Recommended for cylinder bores 1/2" to 2-1/4" (13mm-57mm) diameters.
- Offers fast easy cutting with high or low speed drills.
- Self aligning and self centering.
- Flex joint drive with adjustable tension.
- Includes: Two 1-1/8" (29mm) Med. Grit Stones.

Replacement Stones:

763 Replacement Stones 1-1/8" (29mm), Med. Grit, 220-240 Grit



165 Master In Line Flaring Tool Kit

- The In-Line Flaring Tools unique design locks the adapters, cone and tube in a perfect line making perfect factory flares every time with less risk of breaking adapters.
- With the clamp and set screws putting pressure directly over the tube you greatly reduce the chance of the tube slipping from the clamp. Also, this increases the overall life of the clamp by not wearing down the teeth inside from repeated slipping.
- The slender low profile design of this tool allows the user to make flares on the vehicle and in tight spaces. Flares can be achieved along frame rails or areas in the engine compartment, saving the user time from having to remove components or complete lines to make repairs.
- Set includes everything need to do the following: 3/16", 1/4", 5/16", 3/8" Double and Single Flares, 4.75 mm, 6 mm, 8 mm Double and Bubble Flares.
- Patent pending.

The 165 Master In Line Flaring Tool Kit contains a comprehensive selection of specialized flaring tools for the most common Metric and SAE tube flaring applications.



*Make Perfect Flares
Every Time!*



154, 161, 164 In-Line Flaring Tool

In-Line Flaring Tool from Cal-Van Tools enables the user to flare copper or soft steel tubing in tight spaces with its low profile design. The design also enables the technician to use a ratchet or wrench.

- Low profile design allows for use on or off the vehicle.
- Designed to be used with a ratchet to make flares easier.
- In line design makes a more accurate flare.
- Double clamp and hex screw design keeps tubing locked tightly in position.
- For use on thin walled steel and copper tubing.
- Available in SAE (164), Metric (154) and Auto-Specific Set (161).
- Patent Pending.

*Make
Perfect Flares
Every Time!*



154 In-Line Flaring Tool Metric

161 In-Line Flaring Tool Auto-Specific Set (Sold In Pouch)

164 In-Line Flaring Tool SAE

166 Hydraulic In-Line Flaring Tool

- Integrates features of the In-Line Flaring Tool and a Hydraulic Flaring Tool into a lightweight, low profile and versatile kit.
- This timesaving tool enables technicians to make perfect flares every time and is designed to fit into tight access areas for on-car applications.
- Does single, double and bubble flares with the option to expand into quick connect fittings.
- SAE: 3/16", 1/4", 5/16", 3/8".
- Metric: 4.75mm, 6mm, 8mm.
- Includes Constant Tension Tube Cutter.



156 Bubble & ISO In-Line Tube Flaring Kit

- Works for Bubble & ISO flares 4.75mm, 6mm, 8mm tubing.
- Low profile design allows for use on the car or off.
- Designed to be used with a ratchet to make flares easier.
- In-line design make a more accurate flare.
- Double clamp and hex crew design keeps tubing locked tightly in position.
- For use on thin walled steel and copper tubing.
- Comes in easy store case.



*Make Perfect Flares
Every Time!*

163 Double Flaring Tool

- This 45 degree double flaring tool set is designed to withstand the high pressure necessary to double flare soft steel tubing, as well as single flare soft copper, aluminum and brass tubing.
- Includes: Five(5) double flare adapters, drop forged compressor yoke, and bar assembly w/ size capacity- 3/16", 1/4", 5/16", 3/8" and 1/2"
- Also available in Metric w/ size capacity- 4.15mm, 5mm, 6mm, 8mm and 10mm (153).



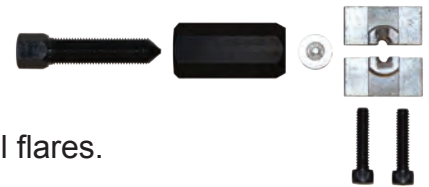
153 Metric Double Flaring Tool

- Designed to withstand high pressures necessary to double-flare soft steel tubing as well as single-flare soft copper, aluminum and brass tubing.
- Set includes drop forged compressor yoke, 5 double-flare adapters and threaded die holding bar with size capacity 4.15mm, 5mm, 6mm, 8mm and 10mm. Blow molded case.



155 In Line 4.75mm Bubble Flaring Tool Kit

- Makes Bubble flares on 4.75mm soft steel or copper tubing.
- In line design for factory quality flares and tight access applications.
- Bars directly clamp over tubing for no push through.
- Clamp and hex sleeve work together to ensure perfectly symmetrical flares.
- Patent pending.



160 Brake Line Flaring Tool

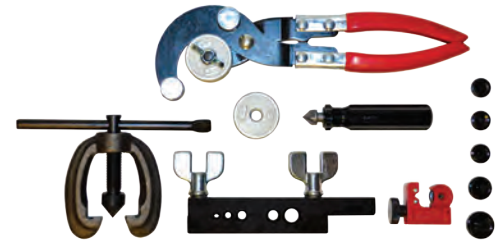
- Convenient handle to make brake flaring easier.
- Flares 3/16" and 4.75mm tubing for bubble or double flares.



82800 Tube Service Kit

This kit features the tools that a technician will need to make SAE single and double flares on soft steel or copper tubing. All of these tools come in one convenient blow molded case.

- 163 Double flaring Tool for making single and double flares on soft steel or copper tubing. Works on 3/16", 1/4", 5/16", 3/8", & 1/2" tubing for single or double flares.
- 151 Mini Tube cutter to cut 1/8" to 5/8" tubing.
- 758 Heavy Duty Tube Bender, plier type bender that bends steel tubing 3/16", 1/4", 5/16", and 3/8" without kinking or collapsing.
- A reamer to de-burr cut tubing and ensure better flares.

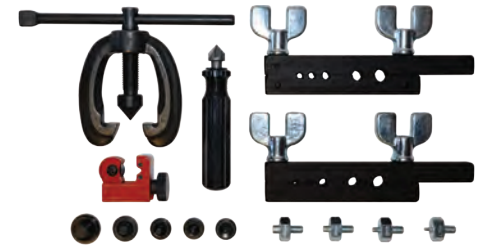


*A Complete SAE
Bend-and-Flare Kit*

82900 Double & Bubble Flare Tool

This set contains the tools necessary to create single or double flares, as well as bubble flares on soft steel and copper tubing. The 2 in one set contain the 163 double flare tool and the 82700 bubble flare tool set in 1 convenient blow molded case.

- Single & Double Flares 3/16", 1/4", 5/16", 3/8", & 1/2" Tubing.
- Bubble Flares 4.75mm, 6mm, 8mm, 10mm Tubing.



*Any SAE Double Or Bubble Flare
Any Time!*

82700 Metric Bubble Flaring Tool Kit

- Forms bubble flares in soft steel and copper tubing.
- Flares metric hydraulic brake lines used on Japanese, European, and domestic automobiles.
- Works on 4.75mm, 6mm, 8mm, 10mm Tubing.



*Makes Bubble Flares For The
Most Common Metric Sizes*

157 Constant Pressure Tube Cutter (3/16" - 7/8")

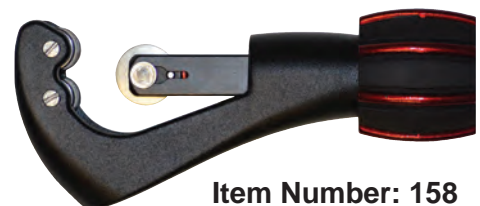
158 Constant Pressure Tube Cutter (1/8" - 1 1/8")

The constant pressure tube cutter utilizes a spring to keep consistent compression on the cutting blade to the tube. This allows the user to cut through thin walled steel tubing without having to continually tighten or readjust the cutter. Simply turn the adjustment handle until the alignment marks line up, then turn the cutter to until the tubing is cut. Makes the task of cutting through steel walled tubing faster and easier. This is a professional grade cutter.

- The 157 can cut a range of tubing sizes from 3/16" - 7/8".
- The 158 can cut a range of tubing sizes from 1/8" - 1-1/8".
- Features a replaceable blade, 157-600.



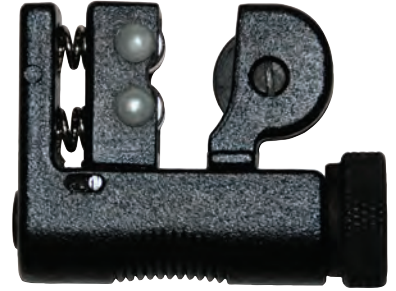
Item Number: 157



Item Number: 158

159 Mini-Mini Constant Pressure Tube Cutter

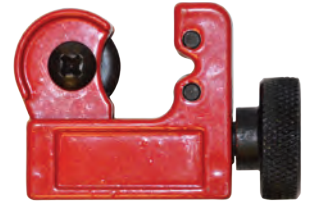
- 2" length allows tool to work effectively in tight spaces.
- Handles the smallest tubing up to 5/8" Tubing.
- Spring loaded pressure point that keep tension constantly on the tubing allows for a tighten 1 time and cut function.
- Replaceable wheel, 159-1.



151 Mini Tubing Cutter

- Cuts soft and copper tubing 1/8" - 5/8" in diameter.
- Alloy Steel cutting wheel.

A Compact Tube Cutting Solution!



758 Heavy Duty Tubing Bender

- Bends 3/16", 1/4", 5/16", and 3/8" diameter copper and steel tubing.
- Will not cause kinking or collapsing.
- Includes two roller adapters.



767 Ratcheting Tubing / PVC Cutter

- Cuts industrial air hose, multi purpose hose, heater and washer hose vacuum hose, non metallic fuel line hose, PVC pipe, battery cables, copper tractor trailer cable and non metallic air brake hose, up to 1 1/2" in diameter.
- Features a quick release mechanism to quickly and easily open pliers for use.
- Ratcheting action makes cutting easy.
- Also features a locking mechanism, in handle, for storage.



878 Ratcheting Chain Wrench

- Chain wrench can be used on any object shape from 5/8" - 5" in diameter.



291 Truck & Tractor Oil Filter Pliers

- Spring loaded, adjustable pliers can easily adjust from 3 3/4" - 7".
- Heavy forged construction creates leverage for high torque applications.
- Can be used in one hand applications.



297, 298 Oil Filter Pliers

297 Oil Filter Pliers fits filters with diameter of 2 3/4" - 3 1/4" (70mm-83mm)

298 Oil Filter Pliers fits filters with diameter of 3 1/8" - 3 5/8" (79mm-92mm)

- Pliers design features no-slip jaws with gripping teeth to easily remove stubborn spin-on oil filters.



302 Adjustable Oil Filter Pliers

- Self adjusting, spring action (NOT a slip joint) oil filter pliers allow for a full range of filter applications.
- Heavy duty forged construction with textured grip add both strengthened leverage to the tool.
- Fits filters from 2 1/4" - 5 3/4" (57 mm - 146 mm).



38400 Drain Plug Repair Kit

- Self adjusting, spring action (NOT a slip joint) oil filter pliers allow for a full range of filter applications.
- Heavy duty forged construction with textured grip add both strengthened leverage to the tool.
- Fits filters from 2 1/4" - 5 3/4" (57 mm - 146 mm).



996 Euro / GM Oil Socket Set

A set of metric-socket oil filter wrenches covering a broad range of applications.

27 mm Socket

Applications: Mercedes-Benz 1.8L I4, Cadillac STS 3.2L V6.

32 mm Socket

Applications: Saabs, 2.2L GM Ecotec.

36 mm Socket

Applications: BMW M52, M60, M62, M70 and M73 engines, M-B OM604, 605 and 606 engines; Audi and VW VR6 engines.



785, 788, 789, 791 Cup Type Oil Filter Wrenches

- These cup-type filters are made of 7 and 16 gauge construction and can withstand up to 85 ft. lbs. of torque.
- Used with 3/8" x drive.



785 Cup Type Oil Filter Wrench 65mm (2-9/16")

14 flutes - 1 step Fits: Champ, Hastings, FM/AC, Wix, Napa, Purolater, Diahatsu, Toyota.

788 Cup Type Oil Filter Wrench 74mm to 76mm (2-29/32" to 3")

15 flutes - 2 step Fits: Fram, AC, Saturn.

789 Cup Type Oil Filter Wrench 76mm (3")

14 flutes - 1 step Fits: Champion, Champ, Lee, Purolator, Mopar, VW, Porsche, Mercedes, BMW.

791 Cup Type Oil Filter Wrench 93mm (3-21/32")

15 flutes - 1 step Fits Casite, Champ, Champion, GM, Fram, Hastings, Purolater, Wix, Nissan, VW, Porsche, Renault.

784ALUM, 786ALUM Aluminum Diecast Filter Wrenches

- These aluminum die-cast filters are designed for tight fit and sure grip.
- They feature a 3/8" drive that is extended for use also with a hex wrench or ratchet and socket.
- Heavy duty construction.
- Sizes are ideal for many tractors and agricultural equipment as well as some automotive applications.



784ALUM Aluminum Diecast Filter Wrench 2-1/2" Cap Style Wrench

786ALUM Aluminum Diecast Filter Wrench 3" Cap Wrench

803 Deluxe Strap Oil Filter Wrench

- This deluxe wrench adjusts quickly to any spin-on filter.
- Features 3/8" and 1/2" forged driver and heavy duty strap for high torque requirements.
- Fits filters up to 9" (228mm).



814 All Size Oil Filter Wrench

- This filter wrench adjusts quickly to any spin-on filter up to 6" in diameter.
- Strong nylon web belt will not slip.
- Use with 1/2" square drive wrench.
- No. 814-02 Replacement Strap.



967 4-In-1 Swivel Oil Filter Wrench

- Wrench set features one swivel handle assembly with four(4) interchangeable bands.
- Designed with two détente pins for quick and easy band attachment.
- Fits oil filters 2-3/8" - 4-3/8" (61mm-111mm).



989, 991 Swivel Truck Oil Filter Wrenches

- Tool features a swivel handle which allows user to get to filters in hard-to-reach areas.
- Wide dimpled band securely grips filters without crushing.
- Easy grip vinyl handle.

989 Swivel Truck Oil Filter Wrench

Fits filters 4-5/16" - 4-3/4" (110mm-120mm) Works on Cummins and Detroit Diesel engines.



991 XL Swivel Truck Oil Filter Wrench

891, 892, 893 Heavy Duty Truck Oil Filter Wrenches

- Wide 1-1/2" steel band designed to withstand the high torque requirements of truck, bus, RV, and heavy duty equipment filters.
- Use with 1/2" square drive tool.

891 Heavy Duty Truck Oil Filter Wrench

Fits filters 4-1/8" - 4-21/32" (105mm-118mm)

892 Heavy Duty Truck Oil Filter Wrench

Fits filters 4-21/32" - 5-5/32" (118mm-130mm)

893 Heavy Duty Truck Oil Filter Wrench

Fits filters 5-5/32" - 5-21/32" (130mm-143mm)



993, 994, 995, 999 Swivel Oil Filter Wrenches

- Tool features a swivel handle which allows user to get to filters in hard-to-reach areas.
- Wide dimpled band securely grips filters without crushing.
- Easy grip vinyl handle.



993 Swivel Oil Filter Wrench fits filters 2-3/8" - 2-7/8" (60mm-73mm) dia.

994 Swivel Oil Filter Wrench fits filters 2-7/8" - 3-1/4" (73mm-83mm) dia.

995 Swivel Oil Filter Wrench fits filters 3-7/16" - 3-3/4" (87mm-95mm) dia.

999 Swivel Oil Filter Wrench fits filters 4" - 4-3/8" (102mm-111mm) dia.

25200 Ford Fuel Filter Wrench

- Low profile that allows mechanics to access those tough fuel filters in tight quarters.
- Used for the installation and removal on Ford Power Stroke Diesel and International/Navistar Diesel engines.
- Other wrenches sometimes break off points of the lid due to pressure not being distributed by the wrench, but this tool spreads the force over six points, preventing damage.



987 Heavy Duty Three Legged Oil Filter Wrench

- This three leg design is ideal for removing spin-on filters in tight access areas.
- No handle to interfere with removal.
- Long serrated legs driven by a 3/8" extension and ratchet wrap around the filter.
- Fits filters with diameter of 2-1/2" - 4-3/4" (64mm-121mm).



988 Three Legged Oil Filter Wrench

- Features gear driven legs to grip and turn the tightest filters.
- Designed for use with 3/8" driver or 3/4" hex wrench.
- Compact design allows for use in tight spaces.
- Removes filters from 2 3/8" - 3 3/4" (60-95 mm).



38400 Drain Plug Repair Kit

Kit designed to repair aluminum oil pans with damaged drain plug threads size M12x1.75 commonly found in GM, Ford, and Mazda. The inserts included allow for the original drain plug to be used, instead of aftermarket plug at a different size. Works with drain plugs commonly found in, but not limited to:

GM, Ford and Mazda aluminum Oil Pans.
 General Motors vehicles
 1999-2004 CK Engine ASM
 V8/LR4/4.8V, LM7/5.3T, LQ4/6.0U



- Kit includes: drill bit, counter boring tool, tap, tap guide, insert tool, & 5 inserts.
- Length of inserts included in kit: 9.2mm.
- Effective in repairing stripped drain plugs without leakage.
- Allows user to use original plug instead of a replacement.



104-03 Finger Socket Driver 3-Pack

- Allows access into tight areas using 1/4" and 3/8" sockets.
- Diamond knurl design for positive grip.
- Includes: One No.102 3/8" male - 1/4" female. One No.103 1/4" male - 3/8" female. One No.104 3/8" male - 3/8" female.



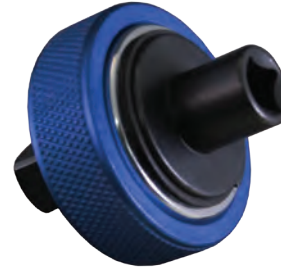
108 Mini Finger Ratchet

- New finger Style Ratchet.
- Small size great for tight areas.
- Aluminum Knurled outer ring for sure grip.
- Reversible Ratchet.
- 1/4" Drive on one side, 1/4" Hex Drive on other.
- Available in Blue or Red Anodized aluminum.



109 Finger Ratchet (3/8" Drive)

- New finger style ratchet.
- Small size great for tight areas.
- Aluminum Knurled outer ring for sure grip.
- Reversible ratchet.
- 3/8" Drive on one side, 1/4" Hex Drive on other.
- Available in Blue Anodized aluminum.



906 Finger Bit Driver

- Convenient tool allows access into the tightest of areas.
- Heavy duty mini-driver uses 1/4" square drive, 1/4" hex bits.
- Generates substantial torque, and comes in bright easy-to-access colors.
- Available in 20 (90620) & 30 (90630) piece merchandisers.



95200, 95300, 95400 In-Line Dowel Pin Puller

- New Dowel Pin Puller that extracts dowels without the use of a slide hammer.
- Fit the appropriate sized collet over the dowel, tighten the sleeve, use outer sleeve and nut to extract the dowel.
- Can be used with air ratchet, or traditional ratchet.
- Elimination of the slide hammer saves cost as well as effort and potential hand injury.
- SAE Set includes 3/16, 1/4, 5/16, 3/8, and 1/2".
- Metric Set Includes 4, 5, 6, 8, 10, and 12MM.
- Master Set includes both SAE and Metric Collets.
- Patent pending.



95200 In-Line Dowel Pin Puller SAE

95300 In-Line Dowel Pin Puller Metric

95400 In-Line Dowel Pin Puller Master Set

119 Magnetic Bit Holder

- 32 bit holder that holds 24 - 1/4" and 8 - 5/16" bits.
- Magnetic backing attaches to toolbox or other surface for convenience.
- Securely holds bits, bit sizes easily identified.



794 Drive Light

- Light easily attaches to any screw driver, ratchet, etc. to light up darkened, tight areas. Can also be used around the house or garage for misc. use.
- Strong LED lights with replaceable battery.
- Patent pending.



626 Inside & Outside Caliper

- Stainless steel inside/outside caliper is a quality precision tool.
- Measurements clearly etched in standard and metric gradations.
- Tension spring holds settings.
- Measures outside diameter from 0.0" and inside diameter from 3/16".
- Slip-slide construction will last for years.



764 Exhaust Tail Pipe Cutter

- Thirteen large diameter (19mm) cutting wheels cut deep into exhaust pipes.
- Will Not leave burrs.
- Ideal for heavier walled European-type exhaust pipes.
- Cuts pipe from 3/4" - 3-1/4" (19mm-83mm) in diameter.
- Only 1/4 turn needed to cut.
- Works well in hard to reach places.



1016 Snap Ring Pliers Set

- These snap ring pliers feature fixed tips.
- Pliers are easily converted from external to internal.
- Available in six(6) or twelve(12) piece sets, which include a durable, easy to store, blow molded case.
- 1016 (12 piece set) No. 1017 - .038 straight tip plier No. 1018 - .038 45 degree tip plier No. 1019 - .038 90 degree tip plier No. 1020 - .047 straight tip tip plier No. 1021 - .047 45 degree plier No. 1022 - .047 90 degree tip plier No. 1023 - .070 straight tip plier No. 1024 - .070 45 degree tip plier No. 1025 - .070 90 degree plier No. 1026 - .090 straight tip tip plier No. 1027 - .090 45 degree plier No. 1028 - .090 90 degree tip plier.



Professional Grade

438 Spiral Screw Extractor Set

- Forged alloy steel, this spiral style extractor can be used to extract broken studs or screws.
- Correct drill size for hole in part to be extracted is indicated on the tool.
- Available as individuals: No. 431- For Removing Screws Shank- 3/16 No. 432- For Removing Screws Shank- 1/4 No. 433- For Removing Screws Shank- 5/16 No. 434- For Removing Screws Shank- 7/16.



441 Fluted Screw Extractor Set

- Forged alloy steel, this tapered style extractor can be used to extract broken studs, screws, pipe and pipe fittings.
- Has gradual taper and long flutes.
- Available as individuals: No. 441-1- For Removing Screw/Stud/Bolt- 1/4", 5/16" No. 441-2- For Removing Screw/Stud/Bolt- 3/8" No. 441-3- For Removing Screw/Stud/Bolt- 7/16" No. 441-4- For Removing Screw/Stud/Bolt- 1/2", 9/16" No. 441-5- For Removing Screw/Stud/Bolt- 5/8".



19 Stud Remover

- This powerful tool is designed to fit into hard-to-reach spots and to remove hard-to-turn studs.
- Will remove broken studs with threads with material above the surface.
- Capacity from 1/4" to 3/4" (6 to 19mm) diameter.
- Zinc plated.
- Roller assembly grips like a pipe wrench.
- Works with a 1/2" drive.



503 Bearing Splitter

- For removing generator gears, bearing cones, bearings and similar parts that ordinary puller jaws cannot reach.
- Knife edges are flush on one side for easy pulling. Bolts are heat treated for added strength.
- No. 503 Bearing Splitter for use with Puller.
- No. 943 Capacity: 0" to 4 1/4" (108 mm) 5/8", 18 Holes.



450 Tight Access Drive Wrench

- Gear driven to gain easy access to tight areas where a box type wrench would not be practical
- Dramatically reduce time needed to remove fasteners in awkward areas.
- Comes in a set of 5 (10mm, 12mm, 13mm, 14mm, 15mm) w/blow molded case
- Includes adapter for use with 3/8" sockets.
- A real time saver.
- Patented.



480 1/2" Breaker Bar

- Extends from 15" to 24"
- Excellent for mobile technicians, allowing them to fit the bar in regular carry tool boxes.
- Has two buttons to lock the bar in three different positions.
- Tested in Independent lab to destruction of 6800 inch pounds. Some tested as high as 8000 pounds.
- Patented.



482 90 Degree Gearless Angle Drive (1/4")

483 90 Degree Gearless Angle Drive (3/8")

- Allows access to hard to reach areas.
- Replaces hard to use universal adapters.
- Exceeds ANSI specs torque max for universal socket adapters.
- Patented.



485 45 Degree Gearless Angle Drive (1/4")

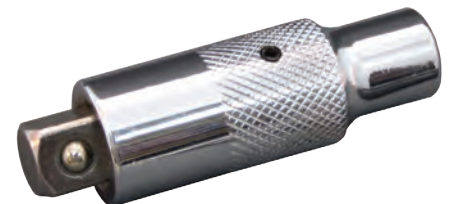
- Allows access to hard to reach areas.
- Replaces hard to use universal adapters.
- Exceeds ANSI specs torque max for universal socket adapters.



488 Twin Spin Drive Converter (1/4"- 3/8")

489 Twin Spin Drive Converter (3/8"- 1/2")

- Can be used to use a 1/4" drive socket on a 3/8" ratchet or a 3/8" drive socket on a 1/4" ratchet.
- Can withstand higher torque than traditional adapters.
- Can be used as a small extension or hand drive for tight access.
- Patented.



48100 Master Ratchet Accessory Set

- Set Includes many popular items available.
- All the items you need to get to tight access areas, around corners, and adapt sockets to step up and down.
- Set Includes: Two (2) Gearless Angle Drives, two (2) Twin Spin Converters and one (1) Finger Bit Driver w/bits.



342 Stripped Hex Screw Removers (SAE)

- Perfect for removing stripped out hex screws.
- Reverse twist of the hex key allows for easy removal of stripped hex screws.
- Available in standard and metric sizes.
- Full range to remove most common sizes.



343 Stripped Hex Screw Removers (Metric)

- Perfect for removing stripped out hex screws.
- Reverse twist of the hex key allows for easy removal of stripped hex screws.
- Available in standard and metric sizes.
- Full range to remove most common sizes.



487 Drive Adapters

Set of drive adapters that step:

- 1/4" to 3/8"
- 3/8" to 1/2"
- 1/2" to 3/4"



490 Versa-Drive (2-In-1 Adapters)

- 1/4" Hex shank adapters
- 3/8" Drive adapter with 1/4" hex for bits (Part No. 491).
- 1/2" Drive adapter with 5/16" hex for bits (Part No. 492).
- Enables users to easily switch between sockets and hex bits.
- Rated for use in 1/4" cordless and pneumatic impact drivers.
- For torques up to 167 ft/lbs or 2,000 in/lbs.



25 2" Round Telescoping Mirror

- 2 1/4" (57mm) round mirror.
- Double ball joint allows mirror to swivel freely 360 degrees yet hold a desired position.
- 7" insulated handle extends to 12".
- 17" overall length.



27 Rectangular Telescoping Inspection Mirror

- 2" x 3 1/2" (51mm-89mm) rectangular mirror.
- Double ball joint allows mirror to swivel freely 360 degrees yet hold a desired position.
- 7" insulated handle extends to 12".
- 17" overall length.



668 Pistol Grip LED Lighted Screwdriver

- Screw driver can either be a straight-grip or pistol-grip screwdriver.
- Removable shank for use with other drivers.
- LED light on handle for dark areas.
- Bits stored in handle.
- Professional quality, high-torque screwdriver.



351 All Purpose Awl

- Heavy duty tool for aligning work, scribing and punching.
- Heat treated shank 1/4" x 4 3/4".



264 Parts Cleaning Brush

- For heavy duty cleaning of metal and masonry surfaces.
- 6" brush length with 14" overall length.



31 Pilot Bearing Puller

- When working space is limited, this puller is needed to remove flywheel pilot bearings from automobiles, trucks, and tractors.
- Can also be used to pull bushings or bearings from generators or starters.
- Only 7 1/2" long.
- Includes 1/2" - 1 1/4" I.D. capacity jaws.



28 Pilot Bearing Puller w/Slide Hammer

- Removes bearings or bushings on flywheel, pump, generator, etc.
- Includes 1/2" - 1 3/8" (13mm to 32mm) I.D. capacity jaws.
- Includes 3 lb. Slide Hammer.



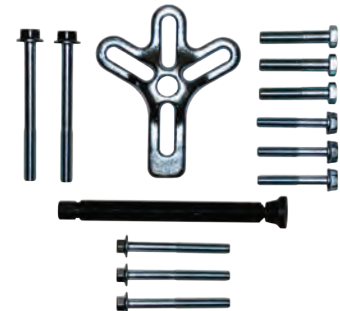
187 Steering Wheel Puller

- This tool is designed to pull steering wheels on all major makes of automobiles.
- 5/8" x 4" center screw is equipped with a floating swivel to prevent damage to horn wire connections.
- Five sets of side screws provided.



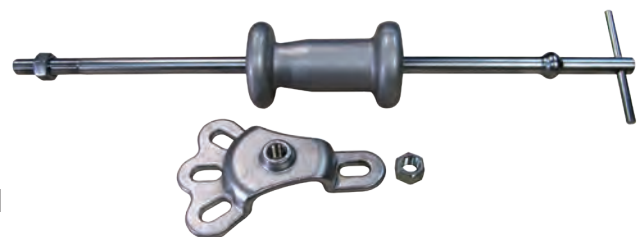
189 Harmonic Balancer Puller

- Designed to pull balancers, vibration dampers, pulleys and gears with tapped holes.
- Four slots in yoke allows tool to be used in both two and three hole applications.
- Removable, floating swivel prevents damage to shaft.
- Yoke is forged from high grade alloy steel and heat treated.



498 Flange Type Axle Puller

- This tool can be used as a regular wheel puller or hub puller as well as a flange type puller.
- The bolt circle range is from 4-1/2" to 5-1/2" which covers all major cars and small trucks with flange type axles.
- The four slots in the adapter allow this tool to be used on either four, five, or six bolt stud designs.
- Has extra heavy 5-1/4-lb. slide hammer.



49600 Seal Puller

- This heavy duty seal puller removes metal or rubber, full lip seals.
- Cone adapter is recessed to hold screw and locks screw into place, enabling shaft to turn by handle to force screw through seal.
- A 17" long shaft enables high pulling force.



237, 240, 941, 942 Two-Jaw Pullers

- Designed with forged yokes, heat treated jaws, and plated for years of dependable use.
- Center screws heat treated and finished in black oxide.

Available sizes:

237 Two-Jaw Puller 2 1/8" Adjustable

3 1/4" spread, Center Screw 3/8" - 24 x 4 3/4", 2 Ton

240 Two-Jaw Puller 3 1/2" Adjustable

4" spread, Center Screw 5/16" - 24 x 3 7/8", 2 Ton

941 Two-Jaw Puller 3 1/2" Reversible

6" spread, Center Screw 9/16" - 20 x 6 3/8", 5 Ton

942 Two-Jaw Puller 5 1/2" Adjustable

7" spread, Center Screw 9/16" - 20 x 6 3/8 in., 5 Ton



134, 951, 952 Two & Three Jaw Combination Pullers

These versatile Combination Pullers may be converted into either a 2 or 3 jaw puller simply by changing the jaws on the yoke. All pullers have standard threads, contrasting zinc and black oxide finish. Yoke and jaws are forged. All parts are heat-treated.

Available sizes:

134 Two & Three Jaw Combination Puller 3 1/2" Reach

4" spread, Center Screw 3/8 in. - 24 x 4 1/4", 2 ton

951 Two & Three Jaw Combination Puller 3 1/2" Reversible

7" spread, Center Screw 9/16" - 20 x 6-3/8", 5 Ton

952 Two & Three Jaw Combination Puller 5 1/2" Adjustable

8" spread, Center Screw 9/16" - 20 x 6-3/8", 5 Ton



957 Adjustable Puller

- 3-jaw adjustable puller.
- 2" - 5" Diameter.
- 2" Depth.
- Jaws stay put before tension is applied for ease of use.
- Low profile to reach into tight places.
- A versatile puller for all your pulling needs.



501 7-Ton Bar Type Puller & Bearing Separator Set

A professional quality Puller & Bearing set for the most difficult jobs.

Includes a Bearing Splitter with 4" capacity, two sets of hex push puller legs, an 8" bar type puller head mated with a custom thread forcing screw.

Works on applications up to 7-tons, larger applications and greater reach 8" - 16".



502 5-Ton Bar Type Puller & Bearing Separator Set

This combination set includes two popular bearing splitters (2" and 3"), four sets of hex push-puller legs and a bar-type puller head with a 9/16" forcing screw.

Separator tools are used with bar puller and legs for a wide variety of pulling jobs. The 5" puller cross-bar with a 6-1/4" forcing screw or each of the bearing separators may also be used separately or in combination with other pullers or tools. Comes in a durable blow molded case.



956 9-Way Slide Hammer Puller Set

This versatile set pulls flange-type rear axles and most front-wheel drive hubs. Internal and external jaws provide a variety of combinations to pull bearings, gears and seals.

Two and three-way cross blocks, and cone, provide the perfect jaw configuration for most jobs.

Set also includes a grip wrench adapter and a dent puller attachment for sheet metal or other unique pulling requirements. Packaged in durable case.



199 Heavy Duty U-Joint Puller

A heavy duty solution for disassembling even the most seized stubborn U-joints in minutes on virtually all Class 7 and 8 trucks and machinery.

- Engineered for use with up to a 1" impact tool.
- Eliminates dangerous vice and socket, or hammering removal methods.
- Does not damage the drive-shaft, yokes, joints or bearing cups.
- One piece unit without bolts, cables, or assembly required.

Applications

- U-Joints with bearing cups 1.5" to 2.2" O.D.
- Spicer 1610, 1710, 1760, 1810, 1880 Series
- Spicer SPL 140, 170, & 250 Life Series
- Meritor (Rockwell) 16N, 17N, 18N, 1710 Series
- Meritor RPL 20, 25 Permalube Series



185 Front End Service Kit

Includes five tools used in the servicing of ball joints, pitman arms, and tie rods on most vehicles.

- A large and small Pitman Arm puller for ball joint applications.
- Three different tie rod pullers.
- Two ball joint separators.
- Comes in a sturdy blow molded case.



186 Pitman Arm Puller

- Heavy duty tool is designed to remove pitman arms from late model cars and light trucks.
- Yoke is forged from high grade alloy steel and heat treated.
- 1 5/16" opening, 2 1/2" pull.



526 Flange Type Axle & Front Wheel Hub Puller

- For use on domestic and import cars and light trucks.
- Range is 3-3/4" to 4-1/2".
- For use on 4,5, or 6 bolt stud design and all non-C lock GM axles.
- May be used with Cal-Van No.498, Flange Type Puller.



94800 Hub Puller

- Tool will remove wheel hubs mounted on tapered axles and press fit rear brake drums.
- Can be adjusted by legs to an 8" diameter bolt circle.
- Made of alloy steel and drop forged, this heavy duty tool has a center screw 1"-14 x 9" with a 1-1/8" hex head.



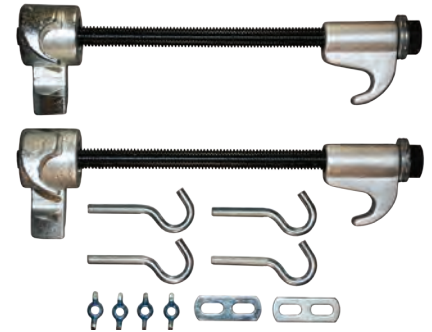
946 Inner Tie Rod Removal Tool

- Turns smooth tie rods easily.
- Simply slide tool over the end and tighten collar to allow access with an extension.
- Can remove Inner tie rod without removing the outer tie rod.
- No more bulky tool to store.
- Inexpensive and effective way to turn these smooth tie rod ends.



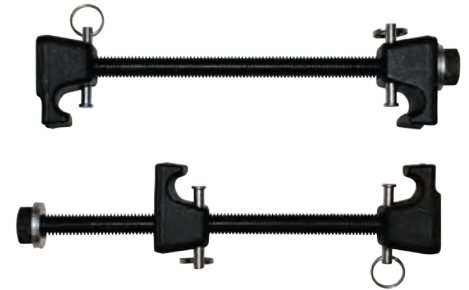
512 MacPherson Strut Tool

- Tool designed to be used on vehicles equipped with MacPherson Struts.
- Allows user to quickly compress the coil spring to replace shock absorber, spring sets, repair bent strut or strut tube and repair damaged spindle.
- Instructions and safety hooks included.
- Not for use with impact tools.



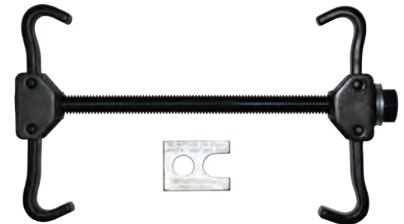
513 Master MacPherson Strut Tool Set

- Professionals choice.
- Tool designed to be used on vehicles equipped with MacPherson Struts.
- Allows user to quickly compress the coil spring to replace shock absorber, spring sets, repair bent strut or strut tube and repair damaged spindle.
- Instructions and safety hooks included.
- Not for use with impact tools.



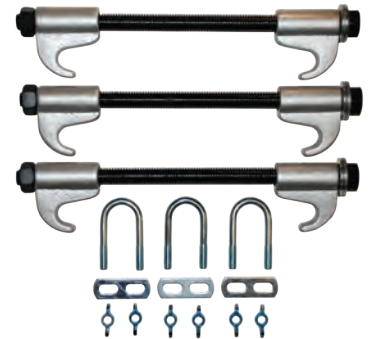
510 Coil Spring Compressor

- This tool removes and installs coil springs quickly and safely.
- Compress coil springs on all passenger cars and pick-up trucks.
- Instructions included.
- Not for use with impact tools.



91000 Coil Spring Clamps

- Three piece heavy duty tool allows for easy removal or installation, where removal of spring through the center is not possible.
- Set clamps in any position.
- Tool comes with three safety U-Bolts.
- Not for use with impact tools.



90200 Master Spring Compressor Set

- Features our two most popular Spring Compressors 90500 Master Mac Strut Tool and the 91500 Coil Spring Compressor.
- Packaged in Heavy Duty Blow molded case.
- Includes: Spring gauge, acme threaded rod.
- 90500 Features Built in Safety Pins.
- 2 in 1 Tool.
- Not for use with impact tools.



504 Bushing Driver Set

Remove or install bushings from 3/8" - 1-3/8" diameter. Found in cars, trucks, tractors, construction equipment, electric motors, and many other components containing bushings.

- Includes sixteen bushing adapters ranging from 3/8" - 1-3/8", large, medium, and small driver handles.
- Comes in a blow-molded storage case.



90100 Hub Tool

- This tool is designed for removing the hub assembly from Ford 4-Wheel Drive Pickup Trucks when replacing ball joints, without causing damage to the wheel bearings.
- Enables the technician to drive wheel bearings out from the back of the hub assembly by threading the tool over the hub assembly stud.
- The tool has threads that match those of the four 1/2" hub assembly studs.
- Includes adapter for Dodge applications.
- Patent pending.



901-300 Dodge Adapter for 90100 Hub Tool

839 Six Piece 4WD Locknut Socket Set

This high quality steel, six-piece socket set, features 1/2" square drives that enable technicians to use ratchets, breaker bars and torque wrenches in their applications. The set comes in a durable blow molded case designed for easy organization of its contents.

This convenient set will cover the most common light truck and SUV applications and includes:

- 4-Lug Socket
- 6-Lug Socket
- Toyota - 4-Lug Lock Nut Socket
- Ford - 4-Lug Lock Nut Socket
- FWD Front Spindle Puller



968 Seven Piece Front Wheel Drive Axle Nut Socket Set

This socket set features extra-long chrome molybdenum 1/2" drive sockets for heavy-duty applications in removing or installing axle nuts on a wide variety of domestic vehicles and imports. This high quality set can be used with torque wrenches, ratchets and breaker bars. The extra-long design ensures complete contact between the nut and socket and prevents slipping or distortion of the axle nuts during application. The set comes in a durable blow-molded storage case.

- 29 mm Socket - Applications include various late model GM, Ford, and Asian imports.
- 30 mm Socket - Applications include GM body styles A, J, and N, plus Asian imports.
- 32 mm Socket - Applications include late model Honda and Chrysler vehicles.
- 34 mm Socket - Applications include many GM mid-size vehicles.
- 35 mm Socket - Applications include many GM vehicles.
- 36 mm Socket - Applications include many GM, Ford, and Chrysler full-size vehicles.
- 38 mm Socket - Applications include various full-size vehicles including SUVs



976 12-Point Metric Axle Nut Socket Set

This set features eight heavy-duty metric sockets that fit axle nuts and automatic transmission tail output shafts on Toyota, Lexus, Chrysler, Dodge, Jeep, Audi, Volkswagen and BMW, as well as many other makes.

- Includes socket sizes: 29mm, 30mm, 32mm, 34mm, 35mm, 36mm, 38mm and 39mm
- Comes with a blow molded case.



196 Ball Joint Removal & Installation Kit

Removes and installs press-fit parts such as ball joints, universal joints, and truck brake anchor pins.

Contains: 3 receiver tubes (2-3/4" I.D. x 3" O.D., 2-1/4" I.D. x 2-1/2" O.D., and 1-3/4" I.D. x 2" O.D.) Installation and removing adapters: 1 installing cup, 1 receiving cup, 1 installing adapter.



197 Ball Joint Super Set

This set allows for the removal and installation of press-fit ball joints on many GM and Ford light-duty trucks, vans and SUVs through 2003; Dodge light trucks through 1998; Dodge vans, Durango and Dakota through 2003; and Honda Accord, Civic, del Sol, and Prelude through 2001.

- C-frame tool can be used alone to remove and replace universal joints.
- Comes complete in durable blow-molded case.



506 Adjustable Bearing, Seal Driver

- All in one design eliminates the need for a driver and different size adapters.
- Locking screw holds the adjustable jaws in place for one hand use.
- Durable and sturdy aluminum construction that is equipped with a steel capped striker shaft handle.
- 3-Stepped jaws quickly adjust to accommodate bearing races and seals from .708" - 3.543" (18mm - 90mm).



904 Wheel Bearing Tool

For replacing the wheel bearings on front-wheel drive cars and light trucks, without having to remove the steering knuckle and strut assembly.



26 18" Professional Windshield Knife

- This heavy duty windshield knife gives that extra reach to cut hardened urethane down to the dash line.
- Constructed of heavy duty steel and aluminum, and a padded ergonomic handle.
- 18" overall length.
- No. 356-1 Replacement Blade.



17 24" Urethane Cut Out Knife

- Windshield tool is composed of rigid aluminum that will not flex.
- Composed of a centered blade, so tool can be used from either side.
- The flush, securing screws prevent dash and molding damage.



49500 Body Dent & Seal Puller

- Tool used to pull dented sheet metal back into position.
- Equipped with a 2-1/2lb. slide hammer.
- A 13" long shaft enables high pulling force.



55 Body Clip Pliers

- The most versatile clip removal tool on the market. Easily removes body clips without damaging them.
- No need to buy 3 sets of trim clip pliers for different applications, this one does it all.
- These specially designed and patented pliers will remove any clip found on trim, bumpers, etc.
- Steel levers enclosed in PMS plastic, prevents scratches.
- Tips have a special angle and size that make them the most versatile tool in the clip removal category.
- These clips are found on almost every vehicle, inside and out.
- Patent pending.



56 Recessed Body Clip Pliers

These new Recessed Body Clip Pliers are designed with the ability to remove push pins and body clips from bumpers and other areas of the vehicle that are recessed or have limited access.

Features a long reach with specially designed ends that help pop the clip off, so that the user does damage the clip by twisting or prying. Handles made of glass filled nylon to prevent scratches. Works great on almost all push pins or body clips.



701 Mini Scraper

- Handy pocket-sized mini-scraper is ideal for detail and body work.
- Scrapes stickers, labels, paint, and more.
- Reversible blade is easily locked in place with thumbscrew for storage.
- Available in an assortment of colors.
- Also available: No.701-30 Merchandiser - 30 piece No.701-50 Merchandiser - 50 piece.



717 Extended Razor Blade Scraper

- 12" (305mm) long, extended reach inspection sticker remover is a must for long sloped windshields.
- Blade clamp is screw tightened to prevent the blade from popping out.
- Includes: One Poly guard blade and two standard single-edge blades inside storage handle.



747 Scraper Mate Sticker Remover

- Economical compact scraper is perfect for removing old stickers and paint blotches off windows.
- Extends to 7-7/8" when fully opened and locked into position.
- Holder tilts blade to give a better angle for getting into corners.
- Blade folds into handle for safe storage.



52600 Scraper Set

Includes our most popular scrapers in one complete set. Set Includes: Two Mini Scrapers (701), One Extended Scrapers (717), One Folding Scraper (747).



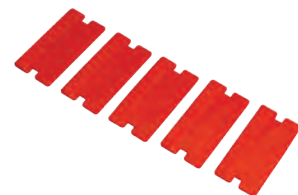
527-5 Extra Long Razor Blades

- Extra Long Razor Blades.
- 3 ¾" long blade yields a cutting surface of at least 2 ¼".
- Sold in a 5 pack of blades in clamshell.



709 Poly Guard Blades

- Used to scrape in scratch risk areas.
- Can be used in a number of our scraping tools.
- 5 pack.



117 Trim Fastener Molding Remover Set (5 Piece)

5 different sizes and styles of tools that allow easy removal of trim fasteners, moldings and wheel hubs. Tools are made of plastic to prevent damage to trim, moldings, alloy wheels or vehicle paint. Can be used on trim fasteners and moldings inside, or outside, the vehicle.



118 Trim Fastener Molding Remover Set (11 Piece)

11 specialty tools designed to remove trim strips, panels, wheel caps, bezels, liners, shrouds, fascia, etc. Comes with a durable cloth storage pouch.



136 Putty Knife / Scraper Set

- Heavy-duty stainless steel, precision ground and polished. Blades taper at tip to provide great flexibility and blade action. Ergonomic, two-component plastic handles provide a non-slip grip. Packaged in a storage tray. Professional quality set.



125 Upholstery Tool Set

- Features high Polish Stainless Steel Blades.
- Includes 2 V-Notch and U-Notch tools.
- Includes a Reverse-U Door panel Tool.
- Bi-Composite ergonomic handle.
- Comes packaged in plastic thermoformed tray.
- Available Individually No. 120 "V" Double Step Door Panel Tool No. 121 "U" Clip Panel Tool No. 122 "U" Mini Door Panel Tool No. 123 "V" Mini Door Panel Tool No. 124 Reverse Door Panel Tool.



536-700 Mini Razor Knife

- Durable mini razor knife.
- Available individually or 30-packs (536700-30).



536 Monster Knife

- Extra large grip for added control.
- Bi Material Handle for a sure grip.
- Replacement Blades Available.
- Equipped with a "Quick Change Blade System"
- Only utility knife you will ever need.
- Replacement Blades 536-1.
- Available in 4-pack merchandisers.



141 Bolstered Wood Handle Putty Knife / Scraper

- High quality wood handled professional putty knife.
- Stainless steel blade.



750 22 Piece Alternator Pulley Service Kit

- This 22 piece kit eliminates the need to shop around for hard-to-find OWC and OAD tools and reduces service bay downtime that can take a toll on dealer profits. Stored in one complete case for users convenience.
- To remove these pulleys the shaft coming from alternator needs to be locked in place while the pulley is spun either clockwise or counter clockwise, depending on the manufacturer. The opposite would be used in installation.
- Covers most US, Euro, makes and models with both on and off vehicle applications: Audi, BMW, Buick, Cadillac, Chevrolet, Chrysler, Citroen, Dodge, Fiat, Ford, Honda, Lexus, Mercury, Mercedes-Benz, Pontiac, Porsche, Saturn, Scion, Toyota, VW.

A comprehensive Alternator Decoupler Pulley kit for servicing late model vehicles with OWC (One-Way-Clutch) and OAD (Overrunning Alternator Decoupler) pulleys.



753 13 Piece Alternator Pulley Service Kit

- 13 Piece kit used to service many popular late model vehicles with both OWC and OAD alternator pulleys.
- To remove these pulleys the shaft coming from alternator needs to be locked in place while the pulley is spun either clockwise or counter clockwise, depending on the manufacturer. The opposite would be used in installation.
- Covers most US, Euro, makes and models with both on and off vehicle applications: Audi, BMW, Buick, Cadillac, Chevrolet, Chrysler, Citroen, Dodge, Fiat, Ford, Honda, Lexus, Mercury, Mercedes-Benz, Pontiac, Porsche, Saturn, Scion, Toyota, VW.



756 Five Piece ADP Kit

A kit for removing and installing many alternator decoupler pulleys on popular vehicles in North America. To remove these pulleys, the shaft coming from the alternator needs to be locked in place while the pulley is spun either clockwise or counter clockwise, depending on the manufacturer. The opposite would be used in installation.

Set Includes:

- H22 x 33T
- H17 x H19
- H10 x 70mm L
- 12mm x 75mm L x T50
- Spline M10



912 Extra Long Torx Screwdriver Set

917 Tamper-Proof Extra Long Torx Screwdriver Set

- Long shaft for hard to reach areas.
- Made of S-2 steel for strength.
- 15-3/4" length.
- Set Includes: T-10, T-15, T-20, T-25, T-27, and T-30.



935 Four Piece MorTorq Set (With Storage Rail)

936 Four Piece MorTorq Set (Blow Molded Case)

- Fits commonly used GM, Nissan and Mazda seat track and transmission bell housing bolts.
- Used for differentials, door panels, suspension components and restraint systems.
- Set includes: #0, #1, #2, #3, #4.



934 52 Piece Master Torx Bit & Socket Set

Set includes: Torx Bit Sockets, Torx Plus Bits Sockets, Tamper-Resistant Torx Bits, and Torx Socket for external bolts.

- Many uses from on most makes of cars and trucks.
- Bits made from S2 steel to meet or exceed torque specifications.
- Two-piece design more durable than a single-piece for long life.
- Torx Licensed.

Includes the following:

Sockets:

1/4" DR TORX socket E4,E5, E6, E7, E8, 3/8"DR TORX socket E10

3/8" DR TORX socket E12, E14, E16

1/2" DR TORX socket E18, E20, E22, E24

Torx Bit:

1/4" DR TORX Bit T6, T8 T10, T15, T20, T25, T27, T30

3/8" DR TORX Bit T40,T45,T47, T50, T55

1/2" DR TORX Bit T60, T70

Tamperproof Torx Bit:

1/4" DR TORX Tamper Bit socket T8H, T10H, T15H, T20H,T25H, T27H, T30H 3/8"DR TORX T40H, T45H, T50H, T55H

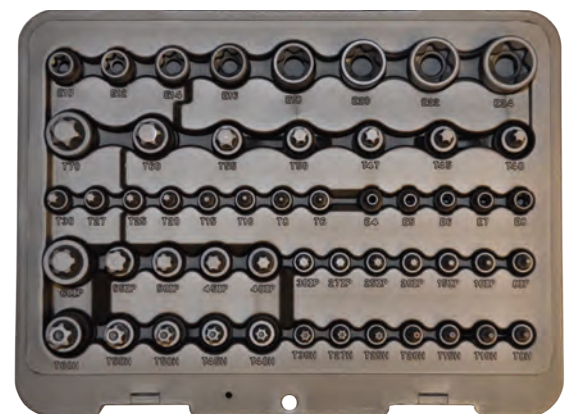
1/2" DR TORX Tamper Bit socket T60H

Torx Plus Bit:

1/4" DR TORX Plus Bit socket 8TP, 10TP, 15TP, 20TP, 25TP, 27TP, 30TP

3/8" DR TORX Plus Bit socket 40TP, 45TP, 50TP, 55TP

1/2" DR TORX Plus Bit socket 60TP



755 Master Alternator Pulley Service Kit (30 Piece)

- This 30 piece kit eliminates the need to shop around for hard-to-find OWC and OAD tools and reduces service bay downtime that can take a toll on dealer profits. Stored in one complete case for users convenience.
- To remove these pulleys the shaft coming from alternator needs to be locked in place while the pulley is spun either clockwise or counter clockwise, depending on the manufacturer. The opposite would be used in installation.
- Covers most US, Euro, makes and models with both on and off vehicle applications: Audi, BMW, Buick, Cadillac, Chevrolet, Chrysler, Citroen, Dodge, Fiat, Ford, Honda, Lexus, Mercedes-Benz, Pontiac, Porsche, Saturn, Scion, Toyota, VW.



Cal-Van Tools most comprehensive Master Alternator Decoupler Pulley kit for servicing late model vehicles with OWC (One-Way-Clutch) and OAD (Overrunning Alternator Decoupler) pulleys.

Mini-Scraper Merchandisers

701-30 Mini-Scraper Merchandiser - 30 piece

701-50 Mini-Scraper Merchandiser - 50 piece

- Handy pocket-sized mini-scraper is ideal for detail and body work.
- Scrapes stickers, labels, paint, and more.
- Reversible blade is easily locked in place with thumbscrew for storage.
- Available in an assortment of colors.



90620, 90630 Finger Bit Driver Merchandisers

90620 Finger Bit Driver Merchandiser - 20 piece

90630 Finger Bit Driver Merchandiser - 30 piece

- Allows access into tight areas using 1/4" and 3/8" sockets.
- Diamond knurl design for positive grip.



536-4 Monster Knife 4-Pack Merchandiser

- Extra large grip for added control.
- Bi-Material Handle for a sure grip.
- Equipped with a "Quick Change Blade System".
- Only utility knife you will ever need.
- Replacement Blades 536-1.
- Includes four Monster Knives.



536-30Pack Mini Razor Knife - 30 Pack Merchandiser

- Durable mini razor knife.



Index

17 24" Urethane Cut Out Knife	47
19 Stud Remover.....	34
25 2" Round Telescoping Mirror	37
26 18" Professional Windshield Knife.....	47
28 Pilot Bearing Puller w/Slide Hammer.....	38
31 Pilot Bearing Puller	38
55 Body Clip Pliers	47
56 Recessed Body Clip Pliers	47
59 Hose Clamp Pliers.....	16
63 Window Tint Meter.....	20
64 High Energy Ignition Tester	18
65 Noid Light Set.....	9
69 AmpAlert.....	19
70 Heavy Duty Circuit Tester	18
72 AmpHound 2.....	19
73 Ripple 'Quik' Tester.....	19
74 Amp Hound.....	20
76 Deluxe 12/24 Volt Relay Tester	20
76 Relay Circuit Pro.....	20
104-03 Finger Socket Driver 3-Pack	32
108 Mini Finger Ratchet	32
109 Finger Ratchet (3/8" Drive).....	32
117 Trim Fastener Molding Remover Set (5 Piece).....	49
118 Trim Fastener Molding Remover Set (11 Piece).....	49
119 Magnetic Bit Holder	33
125 Upholstery Tool Set	49
134, 951, 952, 953, 954 Two & Three Jaw Combination Pullers.....	39
134 Two & Three Jaw Combination Puller	39
135 Ford Radio Remover Tool.....	18
136 Putty Knife / Scraper Set.....	49
141 Bolstered Wood Handle Putty Knife / Scraper.....	49
151 Mini Tubing Cutter	27
153 Metric Double Flaring Tool.....	25
154, 161, 164 In-Line Flaring Tool.....	24
154 In-Line Flaring Tool Metric	24
155 In Line 4.75mm Bubble Flaring Tool Kit.....	25
156 Bubble & ISO In-Line Tube Flaring Kit.....	25
157 Constant Pressure Tube Cutter (3/16" - 7/8").....	26, 49
158 Constant Pressure Tube Cutter (1/8" - 1 1/8").....	26
159 Mini-Mini Constant Pressure Tube Cutter.....	27
160 Brake Line Flaring Tool.....	25
161 In-Line Flaring Tool Auto-Specific Set.....	24
163 Double Flaring Tool.....	25
164 In-Line Flaring Tool SAE.....	24
165 Master In Line Flaring Tool Kit.....	24
166 Hydraulic In-Line Flaring Tool.....	24
181 Face-Groove Pulley-Puller	16
185 Front End Service Kit.....	42
186 Pitman Arm Puller	42

187 Steering Wheel Puller.....	38
189 Harmonic Balancer Puller.....	38
195 Power Steering Pump Pulley Removal & Installer.....	17
196 Ball Joint Removal & Installation Kit.....	46
197 Ball Joint Super Set.....	46
198 Subaru Puller Tool.....	16
199 Heavy Duty U-Joint Puller.....	41
230TNZ Fuel Line Disconnect Tools.....	13
237, 240, 941, 942, 944 Two-Jaw Pullers.....	39
237 Two-Jaw Puller.....	39
240 Two-Jaw Puller.....	39
244TNZ Heater Hose Disc 4 Pc Set.....	13
264 Parts Cleaning Brush.....	37
291 Truck & Tractor Oil Filter Pliers.....	28
297, 298 Oil Filter Pliers.....	28
297 Oil Filter Pliers.....	28
298 Oil Filter Pliers.....	28
302 Adjustable Oil Filter Pliers.....	28, 31
324 Replacement Stone medium Grit.....	14
342 Stripped Hex Screw Removers (SAE).....	36
343 Stripped Hex Screw Removers (Metric).....	36
351 All Purpose Awl.....	37
357-1 Replacement Stones.....	22
357-3 Replacement Stones.....	22
357 Disc Brake & Small Engine Hone.....	22
358-1 Replacement Stones.....	22, 23
358 Disc Brake & Caliper Hone.....	23
360 Engine Cylinder Hone, 2"- 7".....	14
361-01 Replacement Stone fine Grit, 400 Grit, Set of three.....	14
361-02 Replacement Stone coarse Grit, 100 Grit, Set of three.....	14
361 Replacement Stone medium Grit, 220-240 Grit, Set of three.....	14
362 Adjustable Brake Cylinder Hone.....	23
363-01 Replacement Stones.....	23
363-02 Replacement Stones.....	23
363 Replacement Stones.....	23
364 Toyota Brake Spring Tool.....	21
386 GM & Chrysler Harmonic Balancer Puller.....	10
438 Spiral Screw Extractor Set.....	34
441 Fluted Screw Extractor Set.....	34
450 Tight Access Drive Wrench.....	34
482 90 Degree Gearless Angle Drive (1/4").....	35
483 90 Degree Gearless Angle Drive (3/8").....	35
484 1/2" Beaker Bar.....	35
485 45 Degree Gearless Angle Drive (1/4").....	35
487 Drive Adapters.....	36
488 Twin Spin Drive Converter (1/4"- 3/8").....	35
489 Twin Spin Drive Converter (3/8"- 1/2").....	35
490 Versa-Drive (2-In-1 Adapters).....	36
498 Flange Type Axle Puller.....	38
501 7-Ton Bar Type Puller & Bearing Separator Set.....	40
502 5-Ton Bar Type Puller & Bearing Separator Set.....	40
503 Bearing Splitter.....	34

504 Bushing Driver Set.....	44
506 Adjustable Bearing, Seal Driver.....	46
510 Coil Spring Compressor	43
512 MacPherson Strut Tool	43
513 Master MacPherson Strut Tool Set.....	43
526 Flange Type Axle & Front Wheel Hub Puller	42
527-100 Extra Long Razor Blades	48
536-4 Monster Knife 4-Pack Merchandiser	53
536-700 Mini Razor Knife	49
536 Monster Knife	49
549 Battery Terminal Clamp Spreader	18
553 Heavy Duty Battery Post & Terminal End Brush.....	18
626 Inside & Outside Caliper.....	33
641 Piston Ring Compressor Set	14
668 Pistol Grip LED Lighted Screwdriver	37
683 Master Disconnect Set	13
684 Line Quick Disconnect Tools	13
685 BMW Oil Cooler Line Pliers	16
689 Mercedes Fuel Line Pliers	17
693 Ignition Point Files	18
700 Universal Brake Pad Spreader.....	21
701-30, 701-50 Mini-Scraper Merchandisers	53
701-30 Mini-Scraper Merchandiser - 30 piece	53
701-50 Mini-Scraper Merchandiser - 50 piece	53
701 Mini Scraper	48
702 Disc Brake Pad Spreader	21
709 Poly Guard Blades.....	48
717 Extended Razor Blade Scraper.....	48
722 Disc Brake Piston Remover.....	21
723 Two and Three Pin Adjustable Brake Piston Tool.....	22
724 Brake Caliper Turn Back Tool	22
725 2-Pin Brake Rewind Tool	22
726 3-Pin Brake Rewind Tool	22
727 Universal Caliper Turn & Push-Back Tool.....	21
732 AC Belt Installation Tool.....	17
734 The Grabber Serpentine Belt Tool	15
735 Euro Stretch Belt Installation Tool.....	15
736 Stretch Belt Installation Tool	15
737 Subaru Belt Tool	15
738 Serpentine Belt Tool Set.....	15
747 Scraper Mate Sticker Remover	48
750 22 Piece Alternator Pulley Service Kit	50, 52
751 GM Thermostat Wrench	17
752 Variable Pin Spanner Wrench	12
753 13 Piece Alternator Pulley Service Kit	50
756 Five Piece ADP Kit	50
758 Heavy Duty Tubing Bender.....	27
762 Sub Compact Brake Cylinder Hone.....	23
763 Replacement Stones	23
764 Exhaust Tail Pipe Cutter	33
767 Ratcheting Tubing / PVC Cutter	27
784ALUM, 786ALUM Aluminum Diecast Filter Wrenches.....	29

784ALUM Aluminum Diecast Filter Wrench	29
785, 788, 789, 791 Cup Type Oil Filter Wrenches.....	29
785 Cup Type Oil Filter Wrench	29
786ALUM Aluminum Diecast Filter Wrench 3" Cap Wrench	29
788 Cup Type Oil Filter Wrench	29
789 Cup Type Oil Filter Wrench	29
791 Cup Type Oil Filter Wrench	29
794 Drive Light	33
803 Deluxe Strap Oil Filter Wrench.....	29
814 All Size Oil Filter Wrench.....	29
839 Six Piece 4WD Locknut Socket Set.....	44
841 Oxygen Sensor Removal & Installation Set.....	11
842 Seven Piece Oxygen Sensor Socket Set	11
843 Oxygen Sensor Wrench	12
855 Brake Bleeder Tank	22
878 Ratcheting Chain Wrench.....	27
880 Cylinder Head Rethreader Kit.....	17
891, 892, 893 Heavy Duty Truck Oil Filter Wrenches.....	30
891 Heavy Duty Truck Oil Filter Wrench	30
892 Heavy Duty Truck Oil Filter Wrench	30
893 Heavy Duty Truck Oil Filter Wrench	30
904 Wheel Bearing Tool	46
906 Finger Bit Driver.....	32
912 Extra Long Torx Screwdriver Set.....	51
917 Tamper-Proof Extra Long Torx Screwdriver Set	51
933 Master Torx Bit Set	51
935 Four Piece MorTorq Set (With Storage Rail)	51
936 Four Piece MorTorq Set (Blow Molded Case)	51
941 Two-Jaw Puller	39
942 Two-Jaw Puller	39
946 Inner Tie Rod Removal Tool	42
951 Two & Three Jaw Combination Puller	39
952 Two & Three Jaw Combination Puller	39
956 9-Way Slide Hammer Puller Set.....	41
957 Adjustable Puller.....	39
967 4-In-1 Swivel Oil Filter Wrench.....	30
968 Seven Piece Front Wheel Drive Axle Nut Socket Sets.....	45
976 12-Point Metric Axle Nut Socket Set.....	45
980 Crank Bolt Socket Set	11
987 Heavy Duty Three Legged Oil Filter Wrench.....	31
988 Three Legged Oil Filter Wrench	31
989, 991 Swivel Truck Oil Filter Wrench.....	30
989 Swivel Truck Oil Filter Wrench.....	30
991 XL Swivel Truck Oil Filter Wrench	30
993, 994, 995, 999 Swivel Oil Filter Wrenches.....	30
993 Swivel Oil Filter Wrench	30
994 Swivel Oil Filter Wrench	30
995 Swivel Oil Filter Wrench	30
996 Euro / GM Oil Socket Set	28
999 Swivel Oil Filter Wrench	30
1016 Snap Ring Pliers Set	33
16000 Radiator Hose Pinch Off Pliers.....	14

16500 Heavy Duty Pinch Off Pliers	14
25200 Ford Fuel Filter Wrench.....	31
32300 Adjustable Cylinder Hone Deglazer, 2"- 5"	14
33000 4-In-1 Hone Set	23
36700 Two-In-One S-Cam Brake Tool.....	21
36700 Two"-One S-Cam Brake Tool.....	21
38300 Ford & Mazda Camshaft Alignment Kit.....	9
38400 Drain Plug Repair Kit.....	28
38500 Master Harmonic Balancer & Pulley Installer	10
38800 Harmonic Balancer Installer	10
38900 Ford Triton Spark Plug Thread Repair Kit	8
39100 Ford Triton Spark Plug Extractor	8
39200 Ford Triton Spark Plug Porcelain Extractor	8, 9
39300 Three Valve Ford Triton Insert Kit.....	8
48100 Master Ratchet Accessory Set	35
49500 Body Dent & Seal Puller	47
49600 Seal Puller	39
52600 Scraper Set.....	48
82700 Metric Bubble Flaring Tool Kit.....	26
82800 Tube Service Kit	26
82900 Double & Bubble Flare Tool.....	26
90100 Hub Tool	44
90200 Master Spring Compressor Set	43
90620, 90630 Finger Bit Driver Merchandisers.....	53
90620 Finger Bit Driver Merchandiser - 20 piece	53
90630 Finger Bit Driver Merchandiser - 30 piece	53
91000 Coil Spring Clamps.....	43
94800 Hub Puller.....	42
95200, 95300, 95400 In-Line Dowel Pin Puller	32
95200 In-Line Dowel Pin Puller SAE.....	32
95300 In-Line Dowel Pin Puller Metric	32
95400 In-Line Dowel Pin Puller Master Set.....	32
536700-30 Mini Razor Knife - 30 Pack Merchandiser	53



A Leader in Specialty Hand Tool Design and Manufacturing

**Cal-Van Tools
7918 Industrial Village Road
Greensboro, NC 27409**

Phone: 800-537-1077

Fax: 800-537-1717

Email: info@cal-vantools.com

Web: www.cal-vantools.com

YouTube: <http://www.youtube.com/user/calvantools>

Facebook: www.facebook.com/calvantools

Twitter: www.twitter.com/calvantools



CAL-VAN TOOLS IS A DIVISION OF HORIZON TOOL, INC

7918 Industrial Village Road
Greensboro, NC 27409

www.cal-vantools.com

Office: (800) 537-1077
Fax: (336) 299-4003