



CONFIDENCE IN HAND[®]

2022 **CRKT**[®]

DEALER WORKBOOK

2022

CRKT[®]

DEALER
WORKBOOK

CONTENTS

INNOVATION.....	1	
DESIGN.....	3	
NEW PRODUCTS.....	4	
FULL PRODUCT LINE.....	16	
INDEX BY SKU.....	76	
INDEX BY DESIGNER.....	78	
WARRANTY.....		INSIDE BACK COVER



LOCKED. LOADED. M16[®] DEADBOLT.[®]

Three iconic designers.* Three groundbreaking innovations. Three bad-ass knives.



IKBS™



Deadbolt®



Assisted Opening

*Original M16[®] Designed by Kit Carson



Field Strip Gen II

Innovations

Innovation means building the products that will continue to lead and define the industry in terms of creativity and utility. It means constantly asking ourselves how we can be better.

Learn more about CRKT® innovations including Kinematic®, Deadbolt®, Field Strip, Assisted Opening, and more, here—

crkt.com/innovations



What We Do

We are proud to work with leading knifemakers, inventors, and industrial designers in our product development. We work hard to carry out their creative designs to the highest quality standards possible, enabling you to own, use, and collect, innovative production knives and tools. Thanks to them, there is a remarkable range of inspired designs in the CRKT collection to choose from.

Meet the designers who have collaborated with CRKT to bring their designs to life.

crkt.com/knife-design/designers



2083

Blade: Length: 4.37" (110.90 mm)
 Edge: Plain
 Steel: SK-5
 Finish: Powder Coat
 Thickness: 0.17" (4.32 mm)
 Overall: 8.50" (215.90 mm)
 Weight: 5.60 oz. (158.76 g)
 Handle: G10
 Style: Fixed Blade Knife w/Sheath
 Sheath: Material: Thermoplastic
 Weight: 1.00 oz. (28.35 g)

- +SK-5 carbon steel holds an edge
- +Full tang provides strength
- +Black coating improves corrosion resistance

Learn more about Forged by War®: www.crkt.com/forged-by-war

RAMADI™

Designed by Darrin William Sirois in Fayetteville, North Carolina



2372

Blade: Length: 2.74" (69.52 mm)
 Edge: Plain
 Steel: 1.4116
 Finish: Bead Blast
 Thickness: 0.11" (2.90 mm)
 Closed: 3.74" (95.07 mm)
 Open: 6.50" (165.10 mm)
 Weight: 3.00 oz. (85.05 g)
 Handle: G10
 Style: Assisted Folding Knife w/Liner Lock

- +Assisted Opening flipper deploys the blade fast
- +IKBS™ ball bearing pivot deploys the blade smooth
- +High carbon stainless steel blade easy to sharpen

FAWKES

Designed by Alan Folts in Melbourne, Florida



2379

Blade: Length: 2.76" (70.15 mm)
 Edge: Plain
 Steel: 8Cr13MoV
 Finish: Bead Blast
 Thickness: 0.13" (3.25 mm)
 Overall: 5.81" (147.65 mm)
 Weight: 2.00 oz. (56.70 g)
 Handle: Resin Infused Fiber
 Style: Fixed Blade Knife w/Sheath
 Sheath: Material: Thermoplastic
 Weight: 1.10 oz. (31.18 g)

- +High carbon stainless steel blade easy to sharpen
- +Bead blast finish reduces reflection
- +Polished handle with fiber overlays for visual appeal

Available as peggable model no. 2379C

MINIMALIST® PERSIAN

Designed by Alan Folts in Melbourne, Florida



2394

Blade: Length: 3.56" (90.50 mm)
 Edge: Plain
 Steel: 8Cr13MoV
 Finish: Bead Blast
 Thickness: 0.13" (3.30 mm)
 Overall: 6.63" (168.28 mm)
 Weight: 2.40 oz. (68.04 g)
 Handle: Resin Infused Fiber
 Style: Fixed Blade Knife w/Sheath
 Sheath: Material: Thermoplastic
 Lanyard: Nylon Cord
 Weight: 1.30 oz. (36.85 g)

- +High carbon stainless steel blade easy to sharpen
- +Bead blast finish reduces reflection
- +Polished handle with fiber overlays for visual appeal

Available as peggable model no. 2394C

MINIMALIST® KATANA

Designed by Alan Folts in Melbourne, Florida



2398

Blade: Length: 2.44" (61.87 mm)
Edge: Plain
Steel: 8Cr13MoV
Finish: Bead Blast
Thickness: 0.10" (2.64 mm)

Overall: 5.63" (142.88 mm)
Weight: 2.10 oz. (59.53 g)

Handle: G10
Style: Fixed Blade Knife w/Sheath
Sheath: Material: Thermoplastic
Lanyard: Nylon Cord
Weight: 1.10 oz. (31.18 g)

- +High carbon stainless steel blade easy to sharpen
- +Versatile cleaver blade for cutting
- +Bead blast finish reduces reflection

Available as peggable model no. 2398C

S.P.E.C.™ (SMALL. POCKET. EVERYDAY. CLEAVER.)

Designed by Alan Folts in Melbourne, Florida

**2493**

Blade: Length: 2.37" (60.20 mm)
Edge: Plain
Steel: 8Cr14MoV
Finish: Stonewash
Thickness: 0.11" (2.69 mm)

Closed: 3.59" (91.14 mm)
Open: 5.94" (150.83 mm)
Weight: 3.70 oz. (104.89 g)

Handle: Stainless Steel
Style: Assisted Folding Knife w/Frame Lock

- +Assisted Opening flipper deploys the blade fast
- +IKBS™ ball bearing pivot deploys the blade smooth
- +High carbon stainless steel blade easy to sharpen

Available as peggable model no. 2493C

SQUID™

Designed by Lucas Burnley in Bend, Oregon

**2495K**

Blade: Length: 2.95" (74.83 mm)
Edge: Plain
Steel: D2
Finish: Stonewash
Thickness: 0.10" (2.62 mm)

Closed: 4.11" (104.34 mm)
Open: 7.03" (178.59 mm)
Weight: 3.60 oz. (102.06 g)

Handle: G10 | Stainless Steel
Style: Assisted Folding Knife w/Frame Lock

- +Assisted Opening flipper deploys the blade fast
- +IKBS™ ball bearing pivot deploys the blade smooth
- +D2 blade steel retains an edge

Available as peggable model no. 2495KC

SQUID™ XM

Designed by Lucas Burnley in Bend, Oregon

**2710**

Blade: Length: 7.75" (196.85 mm)
Edge: Plain
Steel: SK-5
Finish: Powder Coat
Thickness: 0.19" (4.78 mm)

Overall: 13.25" (336.55 mm)
Weight: 14.20 oz. (402.56 g)

Handle: G10
Style: Fixed Blade Knife w/Sheath
Sheath: Material: Thermoplastic
Weight: 5.60 oz. (158.76 g)

- +SK5 carbon steel holds an edge
- +Kukri blade style for powerful cutting
- +Full tang provides strength

Learn more about Forged by War®: www.crkt.com/forged-by-war

CLEVER GIRL™ KUKRI

Designed by Austin McGlaun in Spring Lake Park, Minnesota



Learn more about Forged by War®: www.crkt.com/forged-by-war

2724

Blade: Length: 2.60" (66.04 mm)
 Edge: Axe w/Hammer
 Steel: 1055 Carbon Steel
 Finish: Manganese Phosphate Coating
 Thickness: 1.47" (37.21 mm)
 Overall: 17.88" (454.03 mm)
 Weight: 1.78 lb (0.81 kg)
 Handle: Tennessee Hickory
 Style: Axe

- +1055 carbon steel provides durability and retains an edge
- +Black coating improves corrosion resistance
- +Durable Tennessee hickory handle

Available as peggable model no. 2724A

CHOGAN™ HAMMER

Designed by Ryan Johnson of RMJ Tactical in Chattanooga, Tennessee



2727

Blade: Length: 3.16" (80.29 mm)
 Edge: Axe w/Hammer
 Steel: 1055 Carbon Steel
 Finish: Manganese Phosphate Coating
 Thickness: 0.91" (23.06 mm)
 Overall: 13.19" (334.98 mm)
 Weight: 1.47 lb (0.69 kg)
 Handle: Glass-Reinforced Nylon
 Style: Axe

- +1055 Carbon steel provides durability, retains an edge
- +Manganese Phosphate coating improves corrosion resistance
- +Easily split wood around camp

CHOGAN™ HATCHET

Designed by Ryan Johnson of RMJ Tactical in Chattanooga, Tennessee



2866

Blade: Length: 5.51" (140.03 mm)
 Edge: Plain
 Steel: 8Cr13MoV
 Finish: Satin
 Thickness: 0.13" (3.35 mm)
 Overall: 10.25" (260.35 mm)
 Weight: 7.50 oz. (212.62 g)
 Handle: Glass-Reinforced Nylon
 w/Rubber Overlay
 Style: Fixed Blade Knife w/Sheath
 Sheath: Material: Thermoplastic
 Weight: 2.40 oz. (68.04 g)

- +High carbon stainless steel blade easy to sharpen
- +Sheepsfoot blade for cutting utility
- +Satin blade finish reduces cutting drag

CATCHALL™

Designed by Russ Kommer in Fargo, North Dakota



2867

Blade: Length: 3.10" (78.61 mm)
 Edge: Plain
 Steel: 8Cr13MoV
 Finish: Satin
 Thickness: 0.11" (2.72 mm)
 Closed: 4.23" (107.47 mm)
 Open: 7.31" (185.75 mm)
 Weight: 3.30 oz. (93.55 g)
 Handle: Resin Infused Fiber w/Aluminum Bolster
 Style: Assisted Folding Knife w/Liner Lock

- +Assisted Opening flipper deploys the blade fast
- +IKBS™ ball bearing pivot deploys the blade smooth
- +High carbon stainless steel blade easy to sharpen

CURFEW™

Designed by Russ Kommer in Fargo, North Dakota



2908

Blade: Length: 3.68" (93.35 mm)
 Edge: Plain
 Steel: D2
 Finish: Stonewash
 Thickness: 0.13" (3.18 mm)
 Closed: 4.91" (124.61 mm)
 Open: 8.63" (219.08 mm)
 Weight: 6.20 oz. (175.77 g)
 Handle: G10
 Style: Assisted Folding Knife w/Deadbolt® Lock

- +Deadbolt® lock is strong and simple to use
- +Assisted Opening flipper deploys the blade fast
- +IKBS™ ball bearing pivot deploys the blade smooth

U.S. Patent No. 9,833,912

INAZUMA NO KEN™

Designed by James Williams in Vass, North Carolina



2909

Blade: Length: 2.65" (67.36 mm)
 Edge: Plain
 Steel: 1.4116
 Finish: Bead Blast
 Thickness: 0.13" (3.23 mm)
 Overall: 5.66" (143.87 mm)
 Weight: 1.30 oz. (36.85 g)
 Handle: Stainless Steel
 Style: Fixed Blade Knife w/Sheath
 Sheath: Material: Thermoplastic
 Weight: 1.80 oz. (51.03 g)

- +High carbon stainless steel blade easy to sharpen
- +Bead blast finish reduces reflection
- +Compact size is lightweight

SDN™

Designed by James Williams in Vass, North Carolina



2927

Blade: Length: 6.50" (165.10 mm)
 Edge: Plain
 Steel: SK-5
 Finish: Powder Coat
 Thickness: 0.21" (5.41 mm)
 Overall: 11.31" (287.35 mm)
 Weight: 8.40 oz. (238.14 g)
 Handle: G10
 Style: Fixed Blade Knife w/Sheath
 Sheath: Material: Boltaron®
 Weight: 2.50 oz. (70.87 g)

- +SK-5 carbon steel holds an edge
- +Full tang provides strength
- +Black coating improves corrosion resistance

Boltaron® is a registered trademark of the SIMONA AMERICA Group.

HZ6

Designed by James Williams in Vass, North Carolina



4041B

Blade: Length: 2.47" (62.69 mm)
 Edge: Plain
 Steel: 1.4116
 Finish: Stonewash
 Thickness: 0.21" (5.38 mm)
 Closed: 4.96" (125.88 mm)
 Open: 7.19" (182.58 mm)
 Weight: 4.70 oz. (133.24 g)
 Handle: Grivory®
 Style: Folding Knife w/Kinematic®

- +Kinematic® quickly deploys the blade
- +High carbon stainless steel blade easy to sharpen
- +Stonewash has attractive worn in look

Grivory® is a registered trademark of EMS-CHEMIE AG
 Gear compatible sheath available model no. D4040
 U.S. Patent Nos. 10,737,400 & D865,480

PROVOKE®

Designed by Joe Caswell in Newbury Park, California



4041R

Blade: Length: 2.47" (62.69 mm)
Edge: Plain
Steel: 1.4116
Finish: Stonewash
Thickness: 0.21" (5.38 mm)
Closed: 4.97" (126.11 mm)
Open: 7.19" (182.58 mm)
Weight: 4.70 oz. (133.24 g)
Handle: Grivory®
Style: Folding Knife w/Kinematic®

- +Kinematic® quickly deploys the blade
- +High carbon stainless steel blade easy to sharpen
- +Stonewash has attractive worn in look

Grivory® is a registered trademark of EMS-CHEMIE AG
Gear compatible sheath available model no. D4040
U.S. Patent Nos. 10,737,400 & D865,480

PROVOKE®

Designed by Joe Caswell in Newbury Park, California



4045

Blade: Length: 2.26" (57.33 mm)
Edge: Plain
Steel: D2
Finish: Stonewash
Thickness: 0.15" (3.73 mm)
Closed: 4.54" (115.42 mm)
Open: 6.63" (168.28 mm)
Weight: 4.40 oz. (124.74 g)
Handle: Aluminum
Style: Folding Knife w/Kinematic®

- +Kinematic® quickly deploys the blade
- +D2 blade steel retains an edge
- +Aluminum handle is strong and lightweight

U.S. Patent Nos. 10,737,400 & D865,480

PROVOKE® COMPACT

Designed by Joe Caswell in Newbury Park, California



5385

Blade: Length: 2.94" (74.63 mm)
Edge: Plain
Steel: 8Cr13MoV
Finish: Satin
Thickness: 0.12" (3.15 mm)
Closed: 3.89" (98.81 mm)
Open: 6.81" (173.05 mm)
Weight: 3.80 oz. (107.73 g)
Handle: Stainless Steel
Style: Assisted Folding Knife w/Frame Lock

- +Assisted Opening flipper deploys the blade fast
- +IKBS™ ball bearing pivot deploys the blade smooth
- +High carbon stainless steel blade easy to sharpen

Available as peggable model no. 5385C

DELINEATION™

Designed by Eric Ochs in Sherwood, Oregon



6433

Blade: Length: 2.95" (74.96 mm)
Edge: Plain
Steel: 8Cr13MoV
Finish: Satin
Thickness: 0.11" (2.69 mm)
Closed: 3.78" (95.91 mm)
Open: 6.75" (171.45 mm)
Weight: 2.30 oz. (65.20 g)
Handle: Glass-Reinforced Nylon
Style: Folding Knife w/Front Lock

- +High carbon stainless steel blade easy to sharpen
- +Durable glass-reinforced nylon handle
- +Front lock mechanism secures the blade

KITH

Designed by Ken Steigerwalt in Orangeville, Pennsylvania



6434

Blade: Length: 3.50" (88.82 mm)
 Edge: Plain
 Steel: 8Cr13MoV
 Finish: Satin
 Thickness: 0.13" (3.23 mm)
 Closed: 4.52" (114.78 mm)
 Open: 8.00" (203.20 mm)
 Weight: 3.70 oz. (104.89 g)
 Handle: Glass-Reinforced Nylon
 Style: Folding Knife w/Front Lock

- +High carbon stainless steel blade easy to sharpen
- +Durable glass-reinforced nylon handle
- +Front lock mechanism secures the blade

KOVA™

Designed by Ken Steigerwalt in Orangeville, Pennsylvania



6535

Blade: Length: 3.19" (80.98 mm)
 Edge: Plain
 Steel: D2
 Finish: Satin
 Thickness: 0.12" (3.02 mm)
 Closed: 4.15" (105.38 mm)
 Open: 7.38" (187.33 mm)
 Weight: 3.40 oz. (96.39 g)
 Handle: Glass-Reinforced Nylon
 Style: Assisted Folding Knife w/Liner Lock

- +Assisted Opening flipper deploys the blade fast
- +IKBS™ ball bearing pivot deploys the blade smooth
- +D2 blade steel retains an edge

MAH-HAWK™

Designed by Liong Mah in Palm Bay, Florida



6925

Blade: Length: 2.51" (63.80 mm)
 Edge: Plain
 Steel: 8Cr13MoV
 Finish: Satin
 Thickness: 0.09" (2.29 mm)
 Closed: 3.79" (96.22 mm)
 Open: 7.25" (184.15 mm)
 Weight: 4.00 oz. (113.40 g)
 Handle: Pakkawood
 Style: Folding Knife w/Slip Joint

- +Slip joint opens and closes with two hands
- +Foil knife to remove capsule
- +Corkscrew opener
- +Bottle opener in handle

TRIPLE PLAY™

Designed by Philip Booth in Ithaca, Michigan



7095

Blade: Length: 2.61" (66.27 mm)
 Edge: Plain
 Steel: 1.4116
 Finish: Satin
 Thickness: 0.09" (2.26 mm)
 Closed: 3.56" (90.37 mm)
 Open: 6.13" (155.58 mm)
 Weight: 1.60 oz. (45.36 g)
 Handle: Glass-Reinforced Nylon
 Style: Folding Knife w/Liner Lock

- +IKBS™ ball bearing pivot deploys the blade smooth
- +High carbon stainless steel blade easy to sharpen
- +Flipper deploys the blade fast

CEO COMPACT

Designed by Richard Rogers in Magdalena, New Mexico



U.S. Patent No. D931076
 Available as peggable model no. 7095C

7097K

Blade: Length: 3.35" (85.14 mm)
Edge: Plain
Steel: AUS 8
Finish: EDP
Thickness: 0.09" (2.29 mm)
Closed: 4.35" (110.39 mm)
Open: 7.69" (195.28 mm)
Weight: 1.90 oz. (53.86 g)
Handle: Glass-Reinforced Nylon
Style: Folding Knife w/Liner Lock

- +IKBS™ ball bearing pivot deploys the blade smooth
- +High carbon stainless steel blade easy to sharpen
- +Flipper deploys the blade fast

U.S. Patent No. D931076

Available as peggable model no. 7097KC

CEO

Designed by Richard Rogers in Magdalena, New Mexico



7100

Blade: Length: 3.14" (79.86 mm)
Edge: Plain
Steel: 8Cr13MoV
Finish: Bead Blast
Thickness: 0.10" (2.41 mm)
Closed: 4.10" (104.11 mm)
Open: 7.22" (183.34 mm)
Weight: 1.80 oz. (51.03 g)
Handle: G10
Style: Folding Knife w/Slip Joint

- +Nail nick for ease of opening
- +Slip joint opens and closes with two hands
- +G10 handle provides exceptional grip

Available as peggable model no. 7100C

VENANDI™

Designed by Richard Rogers in Magdalena, New Mexico



7123

Blade: Length: 3.32" (84.38 mm)
Edge: Plain
Steel: 1.4116
Finish: Bead Blast
Thickness: 0.09" (2.36 mm)
Closed: 4.47" (113.44 mm)
Open: 7.81" (198.45 mm)
Weight: 2.00 oz. (56.70 g)
Handle: Glass-Reinforced Nylon
Style: Folding Knife w/Liner Lock

- +IKBS™ ball bearing pivot deploys the blade smooth
- +High carbon stainless steel blade easy to sharpen
- +Flipper deploys the blade fast

Available as peggable model no. 7123C

SEIS™

Designed by Richard Rogers in Magdalena, New Mexico



7271

Blade: Length: 3.48" (88.49 mm)
Edge: Plain
Steel: 8Cr13MoV
Finish: Satin
Thickness: 0.13" (3.23 mm)
Closed: 4.81" (122.22 mm)
Open: 8.28" (210.34 mm)
Weight: 6.20 oz. (175.77 g)
Handle: Glass-Reinforced Nylon w/Stainless Steel Inlay
Style: Folding Knife w/Liner Lock

- +IKBS™ ball bearing pivot deploys the blade smooth
- +High carbon stainless steel blade easy to sharpen
- +Thumb stud for one hand opening

RIPSNORT™ II

Designed by Philip Booth in Ithaca, Michigan



7524

Blade: Length: 2.38" (60.45 mm)
 Edge: Plain
 Steel: 420J2
 Finish: Satin
 Thickness: 0.12" (3.10 mm)
 Overall: 5.85" (148.49 mm)
 Weight: 1.10 oz. (31.18 g)
 Handle: Stainless Steel
 Style: Fixed Blade Knife w/Sheath
 Sheath: Material: Thermoplastic
 Weight: 0.80 oz. (22.68 g)

- +High carbon stainless steel blade easy to sharpen
- +Skeletonized handle reduces weight
- +Textured handle for grip

Available as peggable model no. 7524C

FEISTY™

Designed by Jeff Park in Mililani, Hawaii



7920K

Blade: Length: 3.63" (92.20 mm)
 Edge: Combination
 Steel: 1.4116
 Finish: EDP
 Thickness: 0.13" (3.25 mm)
 Closed: 4.59" (116.61 mm)
 Open: 8.19" (207.98 mm)
 Weight: 4.60 oz. (130.41 g)
 Handle: Carbon Fiber w/G10 Base
 Style: Assisted Folding Knife w/Liner Lock

- +Assisted Opening flipper deploys the blade fast
- +IKBS™ ball bearing pivot deploys the blade smooth
- +Veff Serrations™ provide superior cutting power

P.S.D.™ (PARTICLE. SEPARATION. DEVICE.)

Designed by Jim Hammond in Birmingham, Alabama



9913

Length: 2.61" (66.40 mm)
 Weight: 1.00 oz. (28.35 g)
 Handle: Stainless Steel

- +Replaceable cord cutter
- +Useful pry-bar
- +Convenient bottle opener
- +1/4", 5/16", 3/8" hex wrenches
- +0-ring secured PH1 hex bit

PRY CUTTER KEYCHAIN TOOL

Designed by Joe Wu in Mountain View, California



K230XXP

Blade: Length: 3.37" (85.70 mm)
 Edge: Plain
 Steel: D2
 Finish: Satin
 Thickness: 0.12" (3.15 mm)
 Closed: 4.32" (109.68 mm)
 Open: 7.69" (195.28 mm)
 Weight: 3.90 oz. (110.56 g)
 Handle: Stainless Steel
 Style: Assisted Folding Knife w/Frame Lock

- +Assisted Opening flipper deploys the blade fast
- +IKBS™ ball bearing pivot deploys the blade smooth
- +D2 blade steel retains an edge

Available as peggable model no. K230XXPC

FACET™

Designed by Ken Onion in Kaneohe, Hawaii



K800KKP

Blade: Length: 3.35" (85.12 mm)
Edge: Combination
Steel: 1.4116
Finish: Stonewash
Thickness: 0.12" (2.95 mm)
Closed: 4.86" (123.32 mm)
Open: 8.19" (207.98 mm)
Weight: 3.60 oz. (102.06 g)
Handle: Glass-Reinforced Nylon
Style: Assisted Folding Knife w/Liner Lock

- +Assisted Opening flipper deploys the blade fast
- +IKBS™ ball bearing pivot deploys the blade smooth
- +Veff Serrations™ provide superior cutting power

SHENANIGAN™

Designed by Ken Onion in Kaneohe, Hawaii



K800RKP

Blade: Length: 3.35" (85.12 mm)
Edge: Plain
Steel: 1.4116
Finish: Stonewash
Thickness: 0.12" (2.95 mm)
Closed: 4.86" (123.32 mm)
Open: 8.19" (207.98 mm)
Weight: 3.60 oz. (102.06 g)
Handle: Glass-Reinforced Nylon
Style: Assisted Folding Knife w/Liner Lock

- +Assisted Opening flipper deploys the blade fast
- +IKBS™ ball bearing pivot deploys the blade smooth
- +Textured handle for grip

SHENANIGAN™

Designed by Ken Onion in Kaneohe, Hawaii



K820BXP

Blade: Length: 3.18" (80.67 mm)
Edge: Plain
Steel: Sandvik 12C27™
Finish: Satin
Thickness: 0.13" (3.20 mm)
Closed: 4.15" (105.46 mm)
Open: 7.38" (187.33 mm)
Weight: 2.10 oz. (59.53 g)
Handle: Aluminum
Style: Assisted Folding Knife w/Liner Lock

- +Assisted Opening flipper deploys the blade fast
- +IKBS™ ball bearing pivot deploys the blade smooth
- +Sandvik 12C27™ blade steel retains an edge

STYLUS™

Designed by Ken Onion in Kaneohe, Hawaii



M16-02DB

Blade: Length: 3.12" (79.15 mm)
Edge: Plain
Steel: D2
Finish: Stonewash
Thickness: 0.12" (2.95 mm)
Closed: 4.28" (108.59 mm)
Open: 7.38" (187.33 mm)
Weight: 4.00 oz. (113.40 g)
Handle: Aluminum
Style: Assisted Folding Knife w/Deadbolt® Lock

- +Deadbolt® lock is strong and simple to use
- +Assisted Opening flipper deploys the blade fast
- +IKBS™ ball bearing pivot deploys the blade smooth

M16®-02DB

Designed by Kit Carson in Vine Grove, Kentucky



U.S. Patent No. 9,833,912

M16-02SS

Blade: Length: 3.06" (77.83 mm)
 Edge: Plain
 Steel: Sandvik 12C27™
 Finish: Bead Blast
 Thickness: 0.12" (2.92 mm)
 Closed: 4.25" (108.00 mm)
 Open: 7.38" (187.33 mm)
 Weight: 3.60 oz. (102.06 g)
 Handle: Stainless Steel
 Style: Folding Knife w/Frame Lock

- +Sandvik 12C27™ blade steel retains an edge
- +Durable stainless steel handle
- +Frame lock secures the blade

Available as peggable model no. M16-02SSC

M16® -02SS

Designed by Kit Carson in Vine Grove, Kentucky



M16-03DB

Blade: Length: 3.58" (91.03 mm)
 Edge: Plain
 Steel: D2
 Finish: Stonewash
 Thickness: 0.12" (2.97 mm)
 Closed: 4.65" (118.16 mm)
 Open: 8.25" (209.55 mm)
 Weight: 4.00 oz. (113.40 g)
 Handle: Aluminum
 Style: Assisted Folding Knife w/Deadbolt® Lock

- +Deadbolt® lock is strong and simple to use
- +Assisted Opening flipper deploys the blade fast
- +IKBS™ ball bearing pivot deploys the blade smooth

U.S. Patent No. 9,833,912

M16® -03DB

Designed by Kit Carson in Vine Grove, Kentucky



M16-03SS

Blade: Length: 3.54" (89.92 mm)
 Edge: Plain
 Steel: Sandvik 12C27™
 Finish: Bead Blast
 Thickness: 0.12" (3.00 mm)
 Closed: 4.65" (118.21 mm)
 Open: 8.19" (207.98 mm)
 Weight: 3.60 oz. (102.06 g)
 Handle: Stainless Steel
 Style: Folding Knife w/Frame Lock

- +Sandvik 12C27™ blade steel retains an edge
- +Durable stainless steel handle
- +Frame lock secures the blade

Available as peggable model no. M16-03SSC

M16® -03SS

Designed by Kit Carson in Vine Grove, Kentucky



M16-04DB

Blade: Length: 3.89" (98.86 mm)
 Edge: Plain
 Steel: D2
 Finish: Stonewash
 Thickness: 0.14" (3.48 mm)
 Closed: 5.34" (135.56 mm)
 Open: 9.31" (236.55 mm)
 Weight: 6.80 oz. (192.78 g)
 Handle: Aluminum
 Style: Assisted Folding Knife w/Deadbolt® Lock

- +Deadbolt® lock is strong and simple to use
- +Assisted Opening flipper deploys the blade fast
- +IKBS™ ball bearing pivot deploys the blade smooth

U.S. Patent No. 9,833,912

M16® -04DB

Designed by Kit Carson in Vine Grove, Kentucky



M16-04SS

Blade: Length: 3.89" (98.88 mm)
Edge: Plain
Steel: Sandvik 12C27™
Finish: Bead Blast
Thickness: 0.13" (3.40 mm)
Closed: 5.35" (135.99 mm)
Open: 9.31" (236.55 mm)
Weight: 6.10 oz. (172.93 g)
Handle: Stainless Steel
Style: Folding Knife w/Frame Lock

- +Sandvik 12C27™ blade steel retains an edge
- +Durable stainless steel handle
- +Frame lock secures the blade

Available as peggable model no. M16-04SSC

M16®-04SS

Designed by Kit Carson in Vine Grove, Kentucky



FULL PRODUCT LINE
FOLLOWS

1032

Blade: Length: 3.25" (82.55 mm)
Edge: Plain
Material: Beech Wood
Finish: Raw
Closed: 4.63" (117.48 mm)
Open: 8.00" (203.20 mm)
Weight: 1.80 oz. (51.03 g)
Handle: Beech Wood
Style: Folding Knife w/Lockback Safety

- +Wood knife kit
- +Teach knife safety and responsibility
- +Family Crafts Project: Recommended for kids 7 and up

NATHAN'S KNIFE KIT

Designed by Nathan and Glenn Klecker in Silverton, Oregon



1050K

Blade: Length: 3.88" (98.43 mm)
Edge: Plain
Steel: 8Cr14MoV
Finish: Oxide
Thickness: 0.12" (3.07 mm)
Closed: 4.75" (120.65 mm)
Open: 8.63" (219.20 mm)
Weight: 5.30 oz. (150.25 g)
Handle: Aluminum w/G10 Inlay
Style: Assisted Folding Knife w/Liner Lock

- +Outburst® assisted opening deploys the blade fast
- +Safety integrated thumbstud prevents accidental opening
- +Liner lock for one hand closing

U.S. Patent No. 7,918,028

FIRE SPARK™

Designed by Matthew Lerch in Sussex, Wisconsin



1100

Blade: Length: 3.29" (83.57 mm)
Edge: Plain
Steel: 8Cr14MoV
Finish: Oxide
Thickness: 0.10" (2.54 mm)
Closed: 4.23" (107.44 mm)
Open: 7.50" (190.50 mm)
Weight: 3.20 oz. (90.72 g)
Handle: Glass-Reinforced Nylon
Style: Assisted Folding Knife w/Liner Lock

- +Outburst® assisted opening deploys the blade fast
- +Safety integrated thumbstud prevents accidental opening
- +Black coating improves corrosion resistance

U.S. Patent No. 7,918,028

MOXIE™

Designed by Matthew Lerch in Sussex, Wisconsin



1105K

Blade: Length: 3.18" (80.77 mm)
Edge: Plain
Steel: 8Cr14MoV
Finish: Oxide
Thickness: 0.10" (2.54 mm)
Closed: 4.17" (105.92 mm)
Open: 7.31" (185.67 mm)
Weight: 3.20 oz. (90.72 g)
Handle: G10
Style: Assisted Folding Knife w/Liner Lock

- +Outburst® assisted opening deploys the blade fast
- +Safety integrated thumbstud prevents accidental opening
- +Black coating improves corrosion resistance

U.S. Patent No. 7,918,028

Available as peggable model no. 1105KC

ENDORSER™

Designed by Matthew Lerch in Sussex, Wisconsin



2020

Blade: Length: 3.32" (84.40 mm)
 Edge: Dual Plain
 Steel: 1055 Carbon Steel
 Finish: Corrosion Resistant Coating
 Thickness: 0.16" (4.01 mm)
 Overall: 6.94" (176.23 mm)
 Weight: 4.80 oz. (136.08 g)
 Handle: 1055 Carbon Steel
 Style: Fixed Blade Knife w/Sheath
 Sheath: Material: Glass-Reinforced Nylon
 Weight: 2.60 oz. (73.71 g)

- +Black coating improves corrosion resistance
- +Utility blade shape
- +Durable glass-reinforced nylon sheath

STING™

Designed by A.G. Russell in Rogers, Arkansas



2055

Overall: 2.48" (62.99 mm)
 Weight: 0.80 oz. (22.68 g)
 Material: Stainless Steel

- +Portable utility
- +Seat belt strap cutter
- +Bottle opener, flat screwdriver, wrenches

K.E.R.T.™ (KEYRING. EMERGENCY. RESCUE. TOOL.)

Designed by Ray Kirk in Tahlequah, Oklahoma



2075

Blade: Length: 4.77" (121.13 mm)
 Edge: Dual Plain
 Steel: 8Cr13MoV
 Finish: Titanium Nitride
 Thickness: 0.15" (3.86 mm)
 Overall: 8.69" (220.68 mm)
 Weight: 4.30 oz. (121.90 g)
 Handle: Stainless Steel
 w/Resin Infused Fiber Overlay
 Style: Fixed Blade Knife w/Sheath
 Sheath: Material: Leather
 Weight: 2.20 oz. (62.37 g)

- +Utility blade shape
- +Polished handle with fiber overlays for visual appeal
- +Durable leather sheath

SHRILL™

Designed by Matthew Lerch in Sussex, Wisconsin



2082

Blade: Length: 3.34" (84.86 mm)
 Edge: Plain
 Steel: SK-5
 Finish: Powder Coat
 Thickness: 0.20" (5.08 mm)
 Overall: 7.44" (188.93 mm)
 Weight: 5.60 oz. (158.76 g)
 Handle: G10
 Style: Fixed Blade Knife w/Sheath
 Sheath: Material: Thermoplastic
 Weight: 3.40 oz. (96.39 g)

- +SK-5 carbon steel holds an edge
- +Easy to carry compact size
- +Black coating improves corrosion resistance

SIWI™

Designed by Darrin William Sirois in Fayetteville, North Carolina



Learn more about Forged by War®: www.crkt.com/forged-by-war

2083

Blade: Length: 4.37" (110.90 mm)
 Edge: Plain
 Steel: SK-5
 Finish: Powder Coat
 Thickness: 0.17" (4.32 mm)
 Overall: 8.50" (215.90 mm)
 Weight: 5.60 oz. (158.76 g)
 Handle: G10
 Style: Fixed Blade Knife w/Sheath
 Sheath: Material: Thermoplastic
 Weight: 1.00 oz. (28.35 g)

- +SK-5 carbon steel holds an edge
- +Full tang provides strength
- +Black coating improves corrosion resistance

Learn more about Forged by War®: www.crkt.com/forged-by-war

RAMADI™

Designed by Darrin William Sirois in Fayetteville, North Carolina



2085

Blade: Length: 3.67" (93.12 mm)
 Edge: Plain
 Steel: 1.4116
 Finish: Bead Blast
 Thickness: 0.13" (3.20 mm)
 Closed: 4.84" (122.91 mm)
 Open: 8.50" (215.90 mm)
 Weight: 4.90 oz. (138.91 g)
 Handle: Carbon Fiber
 w/G10 Base | Stainless Steel
 Style: Assisted Folding Knife w/Frame Lock

- +Outburst® assisted opening deploys the blade fast
- +G10 with carbon fiber handle is strong and lightweight
- +Two position clip for tip-up or down carry

Learn more about Forged by War®: www.crkt.com/forged-by-war

XAN™

Designed by Darrin William Sirois in Fayetteville, North Carolina



2265

Blade: Length: 3.64" (92.53 mm)
 Edge: Plain
 Steel: 1.4116
 Finish: Satin
 Thickness: 0.13" (3.18 mm)
 Closed: 5.26" (133.50 mm)
 Open: 8.94" (227.03 mm)
 Weight: 4.00 oz. (113.40 g)
 Handle: G10
 Style: Folding Knife w/Liner Lock

- +Flipper deploys the blade fast
- +G10 handle provides exceptional grip
- +Tip-up ambidextrous carry

Learn more about Forged by War®: www.crkt.com/forged-by-war

XOLOTL™

Designed by Michael R. Rodriguez in Fayetteville, North Carolina



2290

Blade: Length: 4.42" (112.17 mm)
 Edge: Plain
 Steel: 8Cr13MoV
 Finish: Titanium Nitride
 Thickness: 0.15" (3.78 mm)
 Overall: 8.81" (223.85 mm)
 Weight: 3.80 oz. (107.73 g)
 Handle: Cord-Wrapped Stainless Steel
 Style: Fixed Blade Knife w/Sheath
 Sheath: Material: Thermoplastic
 Weight: 1.20 oz. (34.02 g)

- +Cord wrapped handle for grip
- +Low profile carry
- +Sheath has multiple carry options

NISHI™

Designed by Lucas Burnley in Bend, Oregon



2367

Blade: Length: 3.55" (90.27 mm)
 Edge: Plain
 Steel: 8Cr13MoV
 Finish: Titanium Nitride w/Acid Etch
 Thickness: 0.13" (3.18 mm)
 Overall: 7.56" (192.10 mm)
 Weight: 2.40 oz. (68.04 g)
 Handle: Cord-Wrapped Stainless Steel
 Style: Fixed Blade Knife w/Sheath
 Sheath: Material: Thermoplastic
 Lanyard: Nylon Cord w/Skull
 Weight: 1.10 oz. (31.18 g)

- +Cord wrapped handle for grip
- +Blade etching creates visual effect
- +Sheath has multiple carry options

OBAKE™

Designed by Lucas Burnley in Bend, Oregon



2372

Blade: Length: 2.74" (69.52 mm)
 Edge: Plain
 Steel: 1.4116
 Finish: Bead Blast
 Thickness: 0.11" (2.90 mm)
 Closed: 3.74" (95.07 mm)
 Open: 6.50" (165.10 mm)
 Weight: 3.00 oz. (85.05 g)
 Handle: G10
 Style: Assisted Folding Knife w/Liner Lock

- +Assisted Opening flipper deploys the blade fast
- +IKBS™ ball bearing pivot deploys the blade smooth
- +High carbon stainless steel blade easy to sharpen

FAWKES

Designed by Alan Folts in Melbourne, Florida



2379

Blade: Length: 2.76" (70.15 mm)
 Edge: Plain
 Steel: 8Cr13MoV
 Finish: Bead Blast
 Thickness: 0.13" (3.25 mm)
 Overall: 5.81" (147.65 mm)
 Weight: 2.00 oz. (56.70 g)
 Handle: Resin Infused Fiber
 Style: Fixed Blade Knife w/Sheath
 Sheath: Material: Thermoplastic
 Weight: 1.10 oz. (31.18 g)

- +High carbon stainless steel blade easy to sharpen
- +Bead blast finish reduces reflection
- +Polished handle with fiber overlays for visual appeal

Available as peggable model no. 2379C

MINIMALIST® PERSIAN

Designed by Alan Folts in Melbourne, Florida



2382

Blade: Length: 3.02" (76.66 mm)
 Edge: Plain
 Steel: 8Cr13MoV
 Finish: Satin
 Thickness: 0.11" (2.82 mm)
 Overall: 6.63" (168.28 mm)
 Weight: 1.60 oz. (45.36 g)
 Handle: G10
 Style: Fixed Blade Knife w/Sheath
 Sheath: Material: Thermoplastic
 Lanyard: Nylon Cord
 Weight: 1.10 oz. (31.18 g)

- +Lightweight only 1.6 oz.
- +High carbon stainless steel blade easy to sharpen
- +Full tang provides strength

Available as peggable model no. 2382C

BIWA™

Designed by Alan Folts in Melbourne, Florida



2383

Blade: Length: 2.13" (54.13 mm)
Edge: Plain
Steel: 5Cr15MoV
Finish: Bead Blast
Thickness: 0.10" (2.59 mm)
Overall: 5.06" (128.52 mm)
Weight: 1.70 oz. (48.19 g)
Handle: Resin Infused Fiber
Style: Fixed Blade Knife w/Sheath
Sheath: Material: Thermoplastic
Lanyard: Nylon Cord
Weight: 0.60 oz. (17.01 g)

- +High carbon stainless steel blade easy to sharpen
- +Versatile cleaver blade for cutting
- +Bead blast finish reduces reflection

Available as peggable model no. 2383C

MINIMALIST® CLEAVER

Designed by Alan Folts in Melbourne, Florida



2383K

Blade: Length: 2.13" (54.13 mm)
Edge: Plain
Steel: 5Cr15MoV
Finish: Stonewash
Thickness: 0.10" (2.59 mm)
Overall: 5.06" (128.52 mm)
Weight: 1.70 oz. (48.19 g)
Handle: G10
Style: Fixed Blade Knife w/Sheath
Sheath: Material: Thermoplastic
Lanyard: Nylon Cord
Weight: 0.60 oz. (17.01 g)

- +High carbon stainless steel blade easy to sharpen
- +Versatile cleaver blade for cutting
- +Stonewash has attractive worn in look

Available as peggable model no. 2383KC

MINIMALIST® CLEAVER

Designed by Alan Folts in Melbourne, Florida



2384K

Blade: Length: 2.16" (54.86 mm)
Edge: Plain
Steel: 5Cr15MoV
Finish: Stonewash
Thickness: 0.11" (2.67 mm)
Overall: 5.25" (133.35 mm)
Weight: 1.80 oz. (51.03 g)
Handle: G10
Style: Fixed Blade Knife w/Sheath
Sheath: Material: Thermoplastic
Lanyard: Nylon Cord
Weight: 0.60 oz. (17.01 g)

- +High carbon stainless steel blade easy to sharpen
- +Stonewash has attractive worn in look
- +G10 handle provides exceptional grip

Available as peggable model no. 2384KC

MINIMALIST® DROP POINT

Designed by Alan Folts in Melbourne, Florida



2385

Blade: Length: 2.00" (50.80 mm)
Edge: Plain
Steel: 5Cr15MoV
Finish: Bead Blast
Thickness: 0.10" (2.54 mm)
Overall: 4.88" (123.83 mm)
Weight: 1.20 oz. (34.02 g)
Handle: Resin Infused Fiber
Style: Fixed Blade Knife w/Sheath
Sheath: Material: Thermoplastic
Lanyard: Nylon Cord
Weight: 0.50 oz. (14.17 g)

- +High carbon stainless steel blade easy to sharpen
- +Bead blast finish reduces reflection
- +Polished handle with fiber overlays for visual appeal

MINIMALIST® WHARNCLIFFE

Designed by Alan Folts in Melbourne, Florida



2386

Blade: Length: 2.13" (53.98 mm)
 Edge: Plain
 Steel: 5Cr15MoV
 Finish: Bead Blast
 Thickness: 0.11" (2.79 mm)
 Overall: 5.13" (130.30 mm)
 Weight: 1.60 oz. (45.36 g)
 Handle: Resin Infused Fiber
 Style: Fixed Blade Knife w/Sheath
 Sheath: Material: Thermoplastic
 Lanyard: Nylon Cord
 Weight: 0.50 oz. (14.17 g)

- +High carbon stainless steel blade easy to sharpen
- +Bead blast finish reduces reflection
- +Polished handle with fiber overlays for visual appeal

MINIMALIST® TANTO

Designed by Alan Folts in Melbourne, Florida



2387

Blade: Length: 2.13" (53.98 mm)
 Edge: Plain
 Steel: 5Cr15MoV
 Finish: Bead Blast
 Thickness: 0.11" (2.74 mm)
 Overall: 5.13" (130.18 mm)
 Weight: 1.60 oz. (45.36 g)
 Handle: Resin Infused Fiber
 Style: Fixed Blade Knife w/Sheath
 Sheath: Material: Thermoplastic
 Lanyard: Nylon Cord
 Weight: 0.50 oz. (14.17 g)

- +High carbon stainless steel blade easy to sharpen
- +Bead blast finish reduces reflection
- +Polished handle with fiber overlays for visual appeal

MINIMALIST® BOWIE

Designed by Alan Folts in Melbourne, Florida



2387G

Blade: Length: 2.13" (53.98 mm)
 Edge: Plain
 Steel: 8Cr13MoV
 Finish: Satin
 Thickness: 0.11" (2.74 mm)
 Overall: 5.13" (130.18 mm)
 Weight: 1.60 oz. (45.36 g)
 Handle: Glass-Reinforced Nylon
 Style: Fixed Blade Knife w/Sheath
 Sheath: Material: Thermoplastic
 Lanyard: Nylon Cord
 Weight: 0.50 oz. (14.17 g)

- +High carbon stainless steel blade easy to sharpen
- +Satin blade finish reduces cutting drag
- +Glow in the dark easy identification

MINIMALIST® BOWIE

Designed by Alan Folts in Melbourne, Florida



2387O

Blade: Length: 2.13" (53.98 mm)
 Edge: Plain
 Steel: 8Cr13MoV
 Finish: Satin
 Thickness: 0.11" (2.74 mm)
 Overall: 5.13" (130.18 mm)
 Weight: 1.60 oz. (45.36 g)
 Handle: Glass-Reinforced Nylon
 Style: Fixed Blade Knife w/Sheath
 Sheath: Material: Thermoplastic
 Lanyard: Nylon Cord
 Weight: 0.50 oz. (14.17 g)

- +High carbon stainless steel blade easy to sharpen
- +Satin blade finish reduces cutting drag
- +Glow in the dark easy identification

MINIMALIST® BOWIE

Designed by Alan Folts in Melbourne, Florida



2388

Blade: Length: 3.00" (76.20 mm)
 Edge: Plain
 Steel: 5Cr15MoV
 Finish: Bead Blast
 Thickness: 0.10" (2.54 mm)
 Overall: 6.19" (157.18 mm)
 Weight: 1.70 oz. (48.19 g)
 Handle: G10
 Style: Fixed Blade Knife w/Sheath
 Sheath: Material: Thermoplastic
 Lanyard: Nylon Cord
 Weight: 1.10 oz. (31.18 g)

- +High carbon stainless steel blade easy to sharpen
- +Bead blast finish reduces reflection
- +G10 handle provides exceptional grip

S.P.E.W.™ (SMALL. POCKET. EVERYDAY. WHARNCLIFFE.)

Designed by Alan Folts in Melbourne, Florida



2389

Blade: Length: 2.31" (58.67 mm)
 Edge: Plain
 Steel: 5Cr15MoV
 Finish: Bead Blast
 Thickness: 0.12" (3.05 mm)
 Overall: 6.25" (158.75 mm)
 Weight: 1.70 oz. (48.19 g)
 Handle: Resin Infused Fiber
 Style: Fixed Blade Knife w/Sheath
 Sheath: Material: Thermoplastic
 Lanyard: Nylon Cord
 Weight: 1.10 oz. (31.18 g)

- +High carbon stainless steel blade easy to sharpen
- +Needle sharp blade tip for scoring
- +Bead blast finish reduces reflection

KERAMIN™

Designed by Alan Folts in Melbourne, Florida



2392

Blade: Length: 3.10" (78.74 mm)
 Edge: Plain
 Steel: 8Cr14MoV
 Finish: Two-Tone
 Thickness: 0.12" (3.05 mm)
 Closed: 4.54" (115.32 mm)
 Open: 7.63" (193.80 mm)
 Weight: 6.00 oz. (170.10 g)
 Handle: Stainless Steel
 Style: Folding Knife w/Liner Lock

- +IKBS™ ball bearing pivot deploys the blade fast
- +Mirror & satin blade finish converge for striking look
- +Futuristic blade design

DEVIATION™

Designed by Terry Renner in Palmetto, Florida



2394

Blade: Length: 3.56" (90.50 mm)
 Edge: Plain
 Steel: 8Cr13MoV
 Finish: Bead Blast
 Thickness: 0.13" (3.30 mm)
 Overall: 6.63" (168.28 mm)
 Weight: 2.40 oz. (68.04 g)
 Handle: Resin Infused Fiber
 Style: Fixed Blade Knife w/Sheath
 Sheath: Material: Thermoplastic
 Lanyard: Nylon Cord
 Weight: 1.30 oz. (36.85 g)

- +High carbon stainless steel blade easy to sharpen
- +Bead blast finish reduces reflection
- +Polished handle with fiber overlays for visual appeal

MINIMALIST® KATANA

Designed by Alan Folts in Melbourne, Florida



NEW

Available as peggable model no. 2394C



2398

Blade: Length: 2.44" (61.87 mm)
 Edge: Plain
 Steel: 8Cr13MoV
 Finish: Bead Blast
 Thickness: 0.10" (2.64 mm)
 Overall: 5.63" (142.88 mm)
 Weight: 2.10 oz. (59.53 g)
 Handle: G10
 Style: Fixed Blade Knife w/Sheath
 Sheath: Material: Thermoplastic
 Lanyard: Nylon Cord
 Weight: 1.10 oz. (31.18 g)

- +High carbon stainless steel blade easy to sharpen
- +Versatile cleaver blade for cutting
- +Bead blast finish reduces reflection

Available as peggable model no. 2398C

S.P.E.C.™ (SMALL. POCKET. EVERYDAY. CLEAVER.)

Designed by Alan Folts in Melbourne, Florida



2415

Blade: Length: 2.13" (53.98 mm)
 Edge: Plain
 Steel: 8Cr13MoV
 Finish: Stonewash
 Thickness: 0.15" (3.91 mm)
 Overall: 6.31" (160.35 mm)
 Weight: 2.00 oz. (56.70 g)
 Handle: Cord-Wrapped Carbon Steel
 Style: Fixed Blade Knife w/Sheath
 Sheath: Material: Thermoplastic
 Lanyard: Nylon Cord
 Weight: 1.00 oz. (28.35 g)

- +High carbon stainless steel blade easy to sharpen
- +Grooves on blade for control
- +Flexible machine chain handle rigid while cutting

TAILBONE™

Designed by T.J. Schwarz in Boise, Idaho



2425

Blade: Length: 1.74" (44.20 mm)
 Edge: Plain
 Steel: 5Cr15MoV
 Finish: Stonewash
 Thickness: 0.10" (2.57 mm)
 Overall: 4.13" (104.78 mm)
 Weight: 0.90 oz. (25.51 g)
 Handle: Glass-Reinforced Nylon
 Style: Fixed Blade Knife w/Cap
 Cap: Material: Glass-Reinforced Nylon
 Weight: 0.10 oz. (2.83 g)

- +High carbon stainless steel blade easy to sharpen
- +Durable handle textured for grip
- +Discreet low profile carry

Available as peggable model no. 2425C

SCRIBE™

Designed by T.J. Schwarz in Boise, Idaho



2440

Blade: Length: 2.93" (74.32 mm)
 Edge: Plain
 Steel: 8Cr14MoV
 Finish: Stonewash
 Thickness: 0.15" (3.76 mm)
 Closed: 4.09" (103.89 mm)
 Open: 6.94" (176.23 mm)
 Weight: 3.80 oz. (107.73 g)
 Handle: Carbon Fiber
 w/G10 Base | Stainless Steel
 Style: Folding Knife w/Frame Lock

- +High carbon stainless steel blade easy to sharpen
- +Stonewash has attractive worn in look
- +Thumb slot for one hand opening

HERON™

Designed by Lucas Burntley in Bend, Oregon



2490

Blade: Length: 2.16" (54.76 mm)
Edge: Plain
Steel: 8Cr13MoV
Finish: Stonewash
Thickness: 0.11" (2.79 mm)
Closed: 3.48" (88.29 mm)
Open: 5.70" (144.81 mm)
Weight: 3.50 oz. (99.22 g)
Handle: Stainless Steel
Style: Folding Knife w/Frame Lock

- +Grooves on blade for control
- +Low profile pocket clip for secure carry
- +Lanyard hole for keychain

SQUID™

Designed by Lucas Burnley in Bend, Oregon



2490KS

Blade: Length: 2.16" (54.76 mm)
Edge: Plain
Steel: 8Cr13MoV
Finish: Stonewash
Thickness: 0.11" (2.79 mm)
Closed: 3.48" (88.29 mm)
Open: 5.70" (144.81 mm)
Weight: 3.50 oz. (99.22 g)
Handle: Stainless Steel
Style: Folding Knife w/Frame Lock

- +Stonewash has attractive worn in look
- +Grooves on blade for control
- +Low profile pocket clip for secure carry

Available as peggable model no. 2490KSC

SQUID™

Designed by Lucas Burnley in Bend, Oregon



2491

Blade: Length: 2.25" (57.07 mm)
Edge: Plain
Steel: 8Cr14MoV
Finish: Stonewash
Thickness: 0.10" (2.64 mm)
Closed: 3.49" (88.72 mm)
Open: 5.69" (144.48 mm)
Weight: 3.40 oz. (96.39 g)
Handle: Stainless Steel
Style: Folding Knife w/Frame Lock

- +High carbon stainless steel blade easy to sharpen
- +Thumb stud for one hand opening
- +Durable stainless steel handle

Available as peggable model no. 2491C

SQUID™

Designed by Lucas Burnley in Bend, Oregon



2492

Blade: Length: 2.37" (60.20 mm)
Edge: Plain
Steel: 8Cr14MoV
Finish: Bead Blast
Thickness: 0.11" (2.69 mm)
Closed: 3.59" (91.14 mm)
Open: 5.94" (150.83 mm)
Weight: 3.70 oz. (104.89 g)
Handle: Stainless Steel
Style: Assisted Folding Knife w/Frame Lock

- +Assisted Opening flipper deploys the blade fast
- +IKBS™ ball bearing pivot deploys the blade smooth
- +High carbon stainless steel blade easy to sharpen

Available as peggable model no. 2492C

SQUID™

Designed by Lucas Burnley in Bend, Oregon



2493

Blade: Length: 2.37" (60.20 mm)
 Edge: Plain
 Steel: 8Cr14MoV
 Finish: Stonewash
 Thickness: 0.11" (2.69 mm)
 Closed: 3.59" (91.14 mm)
 Open: 5.94" (150.83 mm)
 Weight: 3.70 oz. (104.89 g)
 Handle: Stainless Steel
 Style: Assisted Folding Knife w/Frame Lock

- +Assisted Opening flipper deploys the blade fast
- +IKBS™ ball bearing pivot deploys the blade smooth
- +High carbon stainless steel blade easy to sharpen

Available as peggable model no. 2493C

SQUID™

Designed by Lucas Burnley in Bend, Oregon

NEW



2495K

Blade: Length: 2.95" (74.83 mm)
 Edge: Plain
 Steel: D2
 Finish: Stonewash
 Thickness: 0.10" (2.62 mm)
 Closed: 4.11" (104.34 mm)
 Open: 7.03" (178.59 mm)
 Weight: 3.60 oz. (102.06 g)
 Handle: G10 | Stainless Steel
 Style: Assisted Folding Knife w/Frame Lock

- +Assisted Opening flipper deploys the blade fast
- +IKBS™ ball bearing pivot deploys the blade smooth
- +D2 blade steel retains an edge

Available as peggable model no. 2495KC

SQUID™ XM

Designed by Lucas Burnley in Bend, Oregon

NEW



2510

Blade: Length: 2.38" (60.33 mm)
 Edge: Combination
 Steel: AUS 4
 Finish: Bead Blast
 Thickness: 0.13" (3.30 mm)
 Overall: 5.75" (146.05 mm)
 Weight: 3.40 oz. (96.39 g)
 Handle: Glass-Reinforced Nylon
 Style: Fixed Blade Knife w/Sheath
 Sheath: Material: Thermoplastic
 Weight: 1.10 oz. (31.18 g)

- +Triple Point™ Serrations easily cut rope and straps
- +Contoured handle for grip
- +Lock secures knife in sheath

BEAR CLAW™

Designed by Russ Kommer in Fargo, North Dakota



2510ER

Blade: Length: 2.38" (60.33 mm)
 Edge: Combination
 Steel: AUS 4
 Finish: Mirror
 Thickness: 0.13" (3.30 mm)
 Overall: 5.75" (146.05 mm)
 Weight: 3.40 oz. (96.39 g)
 Handle: Glass-Reinforced Nylon
 Style: Fixed Blade Knife w/Sheath
 Sheath: Material: Thermoplastic
 Weight: 1.10 oz. (31.18 g)

- +Triple Point™ Serrations cut seatbelts fast for emergencies
- +Mirror polish sheds excess moisture
- +High visibility orange is easy to spot

BEAR CLAW™ E.R.

Designed by Russ Kommer in Fargo, North Dakota



2520

Blade: Length: 3.22" (81.81 mm)
Edge: Plain
Steel: 8Cr14MoV
Finish: Stonewash
Thickness: 0.15" (3.68 mm)
Closed: 4.49" (113.92 mm)
Open: 7.69" (195.28 mm)
Weight: 3.70 oz. (104.89 g)
Handle: G10 | Stainless Steel
Style: Folding Knife w/Frame Lock

- +Thumb stud for one hand opening
- +G10 handle provides exceptional grip
- +Frame lock secures the blade

Available as peggable model no. 2520C

TUNA™

Designed by Lucas Burnley in Bend, Oregon



2550

Blade: Length: 2.89" (73.51 mm)
Edge: Plain
Steel: 8Cr14MoV
Finish: Satin
Thickness: 0.11" (2.90 mm)
Closed: 3.94" (100.08 mm)
Open: 6.69" (169.88 mm)
Weight: 3.70 oz. (104.89 g)
Handle: Stainless Steel
Style: Folding Knife w/Frame Lock

- +K-tip blade shape for cutting
- +Durable stainless steel handle
- +Low profile pocket clip for secure carry

Available as peggable model no. 2550C

SKETCH™

Designed by Lucas Burnley in Bend, Oregon



2630

Blade: Length: 5.10" (129.41 mm)
Edge: Plain
Steel: SK-5
Finish: Powder Coat
Thickness: 0.20" (5.13 mm)
Overall: 9.63" (244.48 mm)
Weight: 9.30 oz. (263.65 g)
Handle: G10
Style: Fixed Blade Knife w/Sheath
Sheath: Material: Thermoplastic
Weight: 1.90 oz. (53.86 g)

- +SK-5 Carbon steel holds an edge
- +G10 handle provides exceptional grip
- +Durable thermoplastic sheath

Learn more about Forged by War®: www.crkt.com/forged-by-war

DU HOC™

Designed by Austin McGlaun in Spring Lake Park, Minnesota



2640

Blade: Length: 4.10" (104.14 mm)
Edge: Plain
Steel: D2
Finish: Titanium Nitride
Thickness: 0.15" (3.81 mm)
Closed: 5.43" (137.85 mm)
Open: 9.50" (241.30 mm)
Weight: 6.70 oz. (189.94 g)
Handle: G10
Style: Folding Knife w/Deadbolt® Lock

- +Deadbolt® lock is strong and simple to use
- +IKBS™ ball bearing pivot deploys the blade fast
- +G10 handle provides exceptional grip

U.S. Patent Nos. 9,833,912 & 10,464,221

Learn more about Forged by War®: www.crkt.com/forged-by-war

CLEVER GIRL™

Designed by Austin McGlaun in Spring Lake Park, Minnesota



2709

Blade: Length: 4.60" (116.84 mm)
 Edge: Plain
 Steel: SK-5
 Finish: Powder Coat
 Thickness: 0.16" (4.01 mm)
 Overall: 10.13" (257.18 mm)
 Weight: 6.30 oz. (178.60 g)
 Handle: G10
 Style: Fixed Blade Knife w/Sheath
 Sheath: Material: Thermoplastic
 Weight: 1.60 oz. (45.36 g)

- +Upswept blade for superior slicing
- +G10 handle provides exceptional grip
- +Durable thermoplastic sheath

Learn more about Forged by War®: www.crkt.com/forged-by-war

CLEVER GIRL™

Designed by Austin McGlaun in Spring Lake Park, Minnesota



2710

Blade: Length: 7.75" (196.85 mm)
 Edge: Plain
 Steel: SK-5
 Finish: Powder Coat
 Thickness: 0.19" (4.78 mm)
 Overall: 13.25" (336.55 mm)
 Weight: 14.20 oz. (402.56 g)
 Handle: G10
 Style: Fixed Blade Knife w/Sheath
 Sheath: Material: Thermoplastic
 Weight: 5.60 oz. (158.76 g)

- +SK5 carbon steel holds an edge
- +Kukri blade style for powerful cutting
- +Full tang provides strength

Learn more about Forged by War®: www.crkt.com/forged-by-war

CLEVER GIRL™ KUKRI

Designed by Austin McGlaun in Spring Lake Park, Minnesota



2724

Blade: Length: 2.60" (66.04 mm)
 Edge: Axe w/Hammer
 Steel: 1055 Carbon Steel
 Finish: Manganese Phosphate Coating
 Thickness: 1.47" (37.21 mm)
 Overall: 17.88" (454.03 mm)
 Weight: 1.78 lb (0.81 kg)
 Handle: Tennessee Hickory
 Style: Axe

- +1055 carbon steel provides durability and retains an edge
- +Black coating improves corrosion resistance
- +Durable Tennessee hickory handle

Replacement handle available model no. 2724-2
 Available as peggable model no. 2724A

CHOGAN™ HAMMER

Designed by Ryan Johnson of RMJ Tactical in Chattanooga, Tennessee



2725

Blade: Length: 2.93" (74.42 mm)
 Edge: Axe w/Spike
 Steel: SK-5
 Finish: Powder Coat
 Thickness: 0.23" (5.84 mm)
 Overall: 13.75" (349.25 mm)
 Weight: 1.53 lb (0.69 kg)
 Handle: Glass-Reinforced Nylon
 Style: Tomahawk w/Sheath
 Sheath: Material: Boltaron®
 Weight: 3.60 oz. (102.06 g)

- +SK-5 carbon steel holds an edge
- +Durable glass-reinforced nylon handle
- +Boltaron® sheath w/MOLLE clip system

Boltaron® is a registered trademark of the SIMONA AMERICA Group.

KANGEE™ T-HAWK

Designed by Ryan Johnson of RMJ Tactical in Chattanooga, Tennessee



2726

Blade: Length: 2.59" (65.66 mm)
Edge: Axe w/Spike
Steel: SK-5
Finish: Powder Coat
Thickness: 0.25" (6.25 mm)
Overall: 10.06" (255.60 mm)
Weight: 1.12 lb (0.51 kg)
Handle: Glass-Reinforced Nylon
Style: Tomahawk w/Sheath
Sheath: Material: Thermoplastic
Weight: 3.50 oz. (99.22 g)

- +Three edges for cutting utility
- +Durable glass-reinforced nylon handle
- +Sheath has multiple carry options

JENNY WREN™ COMPACT

Designed by Ryan Johnson of RMJ Tactical in Chattanooga, Tennessee



2727

Blade: Length: 3.16" (80.29 mm)
Edge: Axe w/Hammer
Steel: 1055 Carbon Steel
Finish: Manganese Phosphate Coating
Thickness: 0.91" (23.06 mm)
Overall: 13.19" (334.98 mm)
Weight: 1.47 lb (0.69 kg)
Handle: Glass-Reinforced Nylon
Style: Axe

- +1055 Carbon steel provides durability, retains an edge
- +Manganese Phosphate coating improves corrosion resistance
- +Easily split wood around camp

CHOGAN™ HATCHET

Designed by Ryan Johnson of RMJ Tactical in Chattanooga, Tennessee



2730

Blade: Length: 3.50" (88.90 mm)
Edge: Axe w/Hammer
Steel: 1055 Carbon Steel
Finish: Clear Lacquer
Thickness: 0.52" (13.21 mm)
Overall: 19.13" (485.90 mm)
Weight: 1.99 lb (0.90 kg)
Handle: Tennessee Hickory
Style: Tomahawk

- +1055 Carbon steel provides durability, retains an edge
- +Durable Tennessee hickory handle
- +Easily split wood around camp

WOODS CHOGAN™ T-HAWK

Designed by Ryan Johnson of RMJ Tactical in Chattanooga, Tennessee



Leather sheath available model no. D2730
Replacement hickory handle available model no. 2730-2
Leather mask available model no. D2730-1
Available as peggable model no. 2730A

2732

Blade: Length: 3.47" (88.16 mm)
Edge: Plain
Steel: 1055 Carbon Steel
Finish: Clear Lacquer
Thickness: 0.46" (11.68 mm)
Overall: 19.13" (485.90 mm)
Weight: 1.59 lb (0.72 kg)
Handle: Tennessee Hickory
Style: Tomahawk

- +1055 Carbon steel provides durability, retains an edge
- +Durable Tennessee hickory handle
- +Beard on axe for cutting utility

WOODS NOBO™ T-HAWK

Designed by Ryan Johnson of RMJ Tactical in Chattanooga, Tennessee



Leather sheath available model no. D2732
Leather mask available model no. D2730-1
Available as peggable model no. 2732A

2735

Blade: Length: 4.21" (106.93 mm)
 Edge: Axe w/Spike
 Steel: 1055 Carbon Steel
 Finish: Clear Lacquer
 Thickness: 0.40" (10.16 mm)
 Overall: 19.13" (485.90 mm)
 Weight: 1.98 lb (0.90 kg)
 Handle: Tennessee Hickory
 Style: Tomahawk

- +1055 Carbon steel provides durability, retains an edge
- +Durable Tennessee hickory handle
- +Easily split wood around camp

Leather sheath available model no. D2735
 Leather Mask available model no. D2730-1
 Available as peggable model no. 2735A

WOODS KANGEE™ T-HAWK

Designed by Ryan Johnson of RMJ Tactical in Chattanooga, Tennessee



2736

Blade: Length: 4.65" (118.06 mm)
 Edge: Axe w/Hammer
 Steel: 1055 Carbon Steel
 Finish: Manganese Phosphate Coating
 Thickness: 1.57" (39.95 mm)
 Overall: 19.00" (482.60 mm)
 Weight: 2.07 lbs. (0.94 kg)
 Handle: Tennessee Hickory
 Style: Axe

- +1055 Carbon steel provides durability, retains an edge
- +Manganese Phosphate coating improves corrosion resistance
- +Durable Tennessee hickory handle

Leather sheath available model no. D2736
 Replacement handle available model no. 2736-2
 Available as peggable model no. 2736A

BERSERKER™

Designed by Ryan Johnson of RMJ Tactical in Chattanooga, Tennessee



2742

Blade: Length: 10.56" (268.30 mm)
 Edge: Plain
 Steel: 65Mn Carbon Steel
 Finish: Powder Coat
 Thickness: 0.14" (3.53 mm)
 Overall: 15.88" (403.23 mm)
 Weight: 14.70 oz. (416.74 g)
 Handle: Glass-Reinforced Nylon
 Style: Fixed Blade Knife w/Sheath
 Material: Woven Nylon
 Weight: 5.50 oz. (155.92 g)

- +Kukri blade style for powerful cutting
- +Carbon steel holds an edge
- +Textured handle for grip

KUK™

Designed by Ryan Johnson of RMJ Tactical in Chattanooga, Tennessee



2746

Blade: Length: 4.53" (115.01 mm)
 Edge: Plain
 Steel: 1055 Carbon Steel
 Finish: Manganese Phosphate Coating
 Thickness: 1.19" (30.10 mm)
 Overall: 16.13" (409.58 mm)
 Weight: 1.79 lb (0.81 kg)
 Handle: Tennessee Hickory
 Style: Axe

- +1055 Carbon steel provides durability, retains an edge
- +Beard on axe for cutting utility
- +Durable Tennessee hickory handle

Learn more about Forged by War®: www.crkt.com/forged-by-war
 Leather sheath available model no. D2746
 Replacement handle available model no. 2746-2

FREYR™

Designed by Elmer Roush in Brasstown, North Carolina



2749

Blade: Length: 3.46" (87.88 mm)
 Edge: Plain
 Steel: 1055 Carbon Steel
 Finish: Manganese Phosphate Coating
 Thickness: 1.25" (31.78 mm)
 Overall: 19.00" (482.60 mm)
 Weight: 1.93 lb (0.87 kg)
 Handle: Tennessee Hickory
 Style: Axe

- +1055 carbon steel provides durability, retains an edge
- +Manganese Phosphate coating improves corrosion resistance
- +Durable Tennessee hickory handle

Leather sheath available model no. D2749
 Replacement handle available model no. 2749-2
 Learn more about Forged by War™: www.crkt.com/forged-by-war

FREYA™

Designed by Elmer Roush in Brasstown, North Carolina



2795

Blade: Length: 4.08" (103.61 mm)
 Edge: Plain
 Steel: 8Cr13MoV
 Finish: Stonewash
 Thickness: 0.13" (3.20 mm)
 Closed: 5.52" (140.08 mm)
 Open: 9.56" (242.90 mm)
 Weight: 7.90 oz. (223.96 g)
 Handle: G10
 Style: Folding Knife w/Liner Lock

- +Stonewash has attractive worn in look
- +G10 handle provides exceptional grip
- +Low profile pocket clip for secure carry

GULF™

Designed by Ryan Johnson of RMJ Tactical in Chattanooga, Tennessee



2861

Blade: Length: 3.01" (76.48 mm)
 Edge: Plain
 Steel: 9Cr18MoV
 Finish: Satin
 Thickness: 0.14" (3.51 mm)
 Overall: 7.25" (184.15 mm)
 Weight: 4.00 oz. (113.40 g)
 Handle: Multi-Layered G10
 Style: Fixed Blade Knife w/Sheath
 Sheath: Material: Leather
 Weight: 1.20 oz. (34.02 g)

- +Grooves on blade for control
- +G10 handle has visual appeal
- +Durable leather sheath

100% of the CRKT® net profits of this knife go to the Pancreatic Cancer Action Network in memory of Larry Fischer. Visit www.pancan.org

HUNT'N FISCH™

Designed by Larry Fischer in Boise, Idaho



2866

Blade: Length: 5.51" (140.03 mm)
 Edge: Plain
 Steel: 8Cr13MoV
 Finish: Satin
 Thickness: 0.13" (3.35 mm)
 Overall: 10.25" (260.35 mm)
 Weight: 7.50 oz. (212.62 g)
 Handle: Glass-Reinforced Nylon w/Rubber Overlay
 Style: Fixed Blade Knife w/Sheath
 Sheath: Material: Thermoplastic
 Weight: 2.40 oz. (68.04 g)

- +High carbon stainless steel blade easy to sharpen
- +Sheepsfoot blade for cutting utility
- +Satin blade finish reduces cutting drag

CATCHALL™

Designed by Russ Kommer in Fargo, North Dakota

NEW





2867

Blade: Length: 3.10" (78.61 mm)
 Edge: Plain
 Steel: 8Cr13MoV
 Finish: Satin
 Thickness: 0.11" (2.72 mm)
 Closed: 4.23" (107.47 mm)
 Open: 7.31" (185.75 mm)
 Weight: 3.30 oz. (93.55 g)
 Handle: Resin Infused Fiber w/Aluminum Bolster
 Style: Assisted Folding Knife w/Liner Lock

- +Assisted Opening flipper deploys the blade fast
- +IKBS™ ball bearing pivot deploys the blade smooth
- +High carbon stainless steel blade easy to sharpen

CURFEW™

Designed by Russ Kommer in Fargo, North Dakota



2903

Blade: Length: 3.88" (98.43 mm)
 Edge: Plain
 Steel: AUS 8
 Finish: Corrosion Resistant Coating
 Thickness: 0.16" (4.06 mm)
 Closed: 5.00" (127.00 mm)
 Open: 8.75" (222.25 mm)
 Weight: 5.80 oz. (164.43 g)
 Handle: Glass-Reinforced Nylon
 Style: Assisted Folding Knife w/Liner Lock

- +Outburst® assisted opening deploys the blade fast
- +Automated liner safety provides security
- +Durable glass-reinforced nylon handle

U.S. Patent No. 7,437,822

HISSATSU™

Designed by James Williams in Vass, North Carolina



2906

Blade: Length: 4.52" (114.81 mm)
 Edge: Plain
 Steel: AUS 8
 Finish: Corrosion Resistant Coating
 Thickness: 0.16" (4.06 mm)
 Closed: 5.61" (142.49 mm)
 Open: 10.13" (257.30 mm)
 Weight: 6.40 oz. (181.44 g)
 Handle: G10 | Stainless Steel
 Style: Folding Knife w/Frame Lock

- +Powerful blade style for penetration
- +Frame lock secures the blade
- +G10 handle provides exceptional grip

OTANASHI NOH KEN™

Designed by James Williams in Vass, North Carolina



2907K

Blade: Length: 7.13" (180.98 mm)
 Edge: Plain
 Steel: 440A
 Finish: EDP
 Thickness: 0.20" (5.08 mm)
 Overall: 12.25" (311.15 mm)
 Weight: 8.00 oz. (226.80 g)
 Handle: Glass-Reinforced Nylon | Rubber
 Style: Fixed Blade Knife w/Sheath
 Sheath: Material: Thermoplastic
 Weight: 3.60 oz. (102.00 g)

- +Black coating improves corrosion resistance
- +Textured handle for grip
- +Sheath has multiple carry options

HISSATSU™

Designed by James Williams in Vass, North Carolina



2908

Blade: Length: 3.68" (93.35 mm)
Edge: Plain
Steel: D2
Finish: Stonewash
Thickness: 0.13" (3.18 mm)
Closed: 4.91" (124.61 mm)
Open: 8.63" (219.08 mm)
Weight: 6.20 oz. (175.77 g)
Handle: G10
Style: Assisted Folding Knife w/Deadbolt® Lock

- +Deadbolt® lock is strong and simple to use
- +Assisted Opening flipper deploys the blade fast
- +IKBS™ ball bearing pivot deploys the blade smooth

U.S. Patent No. 9,833,912

INAZUMA NO KEN™

Designed by James Williams in Vass, North Carolina

NEW



2909

Blade: Length: 2.65" (67.36 mm)
Edge: Plain
Steel: 1.4116
Finish: Bead Blast
Thickness: 0.13" (3.23 mm)
Overall: 5.66" (143.87 mm)
Weight: 1.30 oz. (36.85 g)
Handle: Stainless Steel
Style: Fixed Blade Knife w/Sheath
Sheath: Material: Thermoplastic
Weight: 1.80 oz. (51.03 g)

- +High carbon stainless steel blade easy to sharpen
- +Bead blast finish reduces reflection
- +Compact size is lightweight

SDN™

Designed by James Williams in Vass, North Carolina

NEW



2927

Blade: Length: 6.50" (165.10 mm)
Edge: Plain
Steel: SK-5
Finish: Powder Coat
Thickness: 0.21" (5.41 mm)
Overall: 11.31" (287.35 mm)
Weight: 8.40 oz. (238.14 g)
Handle: G10
Style: Fixed Blade Knife w/Sheath
Sheath: Material: Boltaron®
Weight: 2.50 oz. (70.87 g)

- +SK-5 carbon steel holds an edge
- +Full tang provides strength
- +Black coating improves corrosion resistance

Boltaron® is a registered trademark of the SIMONA AMERICA Group.

HZ6

Designed by James Williams in Vass, North Carolina

NEW



3801

Blade: Length: 3.31" (84.18 mm)
Edge: Plain
Steel: 8Cr13MoV
Finish: Satin
Thickness: 0.13" (3.23 mm)
Closed: 4.16" (105.66 mm)
Open: 7.47" (189.71 mm)
Weight: 2.40 oz. (68.04 g)
Handle: Glass-Reinforced Nylon
Style: Assisted Folding Knife w/Liner Lock

- +Assisted Opening flipper deploys the blade fast
- +IKBS™ ball bearing pivot deploys the blade smooth
- +Durable glass-reinforced nylon handle

Available as pebble model no. 3801C

LCK +

Designed by Matthew Lerch in Sussex, Wisconsin



3802K

Blade: Length: 3.24" (82.40 mm)
 Edge: Plain
 Steel: 8Cr13MoV
 Finish: Oxide
 Thickness: 0.13" (3.25 mm)
 Closed: 4.16" (105.66 mm)
 Open: 7.38" (187.33 mm)
 Weight: 2.50 oz. (70.87 g)
 Handle: Glass-Reinforced Nylon
 Style: Assisted Folding Knife w/Liner Lock

- +Assisted Opening flipper deploys the blade fast
- +IKBS™ ball bearing pivot deploys the blade smooth
- +Durable glass-reinforced nylon handle

Available as peggable model no. 3802KC

LCK +

Designed by Matthew Lerch in Sussex, Wisconsin



3810

Blade: Length: 3.62" (91.97 mm)
 Edge: Plain
 Steel: 8Cr13MoV
 Finish: Satin
 Thickness: 0.12" (3.15 mm)
 Closed: 4.53" (115.06 mm)
 Open: 8.19" (207.98 mm)
 Weight: 2.80 oz. (79.38 g)
 Handle: Glass-Reinforced Nylon
 Style: Assisted Folding Knife w/Liner Lock

- +Assisted Opening flipper deploys the blade fast
- +IKBS™ ball bearing pivot deploys the blade smooth
- +Durable glass-reinforced nylon handle

LCK + LARGE

Designed by Matthew Lerch in Sussex, Wisconsin



4021

Blade: Length: 2.09" (53.04 mm)
 Edge: Plain
 Steel: 8Cr13MoV
 Finish: Stonewash
 Thickness: 0.11" (2.84 mm)
 Closed: 3.33" (84.68 mm)
 Open: 5.25" (133.35 mm)
 Weight: 3.30 oz. (93.55 g)
 Handle: Stainless Steel
 Style: Folding Knife w/Frame Lock

- +IKBS™ ball bearing pivot deploys the blade smooth
- +Flipper deploys the blade fast
- +High carbon stainless steel blade easy to sharpen

Available as peggable model no. 4021C

RAZELCLIFFE™ COMPACT

Designed by Jon Graham in Cleveland, Tennessee



4031

Blade: Length: 3.02" (76.58 mm)
 Edge: Plain
 Steel: 8Cr13MoV
 Finish: Satin
 Thickness: 0.15" (3.68 mm)
 Closed: 4.60" (116.89 mm)
 Open: 7.56" (192.10 mm)
 Weight: 4.30 oz. (121.90 g)
 Handle: Aluminum
 Style: Assisted Folding Knife w/Liner Lock

- +Assisted Opening flipper deploys the blade fast
- +IKBS™ ball bearing pivot deploys the blade smooth
- +Chisel blade useful for push cutting or scraping

RAZEL™ GT

Designed by Jon Graham in Cleveland, Tennessee



4040

Blade: Length: 2.41" (61.21 mm)
Edge: Plain
Steel: D2
Finish: Titanium Nitride
Thickness: 0.21" (5.31 mm)
Closed: 4.96" (125.98 mm)
Open: 7.25" (184.15 mm)
Weight: 6.10 oz. (172.93 g)
Handle: Aluminum
Style: Folding Knife w/Kinematic®

- +Kinematic® quickly deploys the blade
- +D2 blade steel retains an edge
- +Aluminum handle is strong and lightweight

Gear compatible sheath available model no. D4040
U.S. Patent Nos. 10,737,400 & D865,480

PROVOKE®

Designed by Joe Caswell in Newbury Park, California



4040V

Blade: Length: 2.41" (61.21 mm)
Edge: Combination
Steel: D2
Finish: Titanium Nitride
Thickness: 0.21" (5.31 mm)
Closed: 4.96" (125.98 mm)
Open: 7.25" (184.15 mm)
Weight: 5.90 oz. (167.26 g)
Handle: Aluminum
Style: Folding Knife w/Kinematic®

- +Kinematic® quickly deploys the blade
- +D2 blade steel retains an edge
- +Veff Serrations™ provide superior cutting power

Gear compatible sheath available model no. D4040
U.S. Patent Nos. 10,737,400 & D865,480

PROVOKE®

Designed by Joe Caswell in Newbury Park, California



4041B

Blade: Length: 2.47" (62.69 mm)
Edge: Plain
Steel: 1.4116
Finish: Stonewash
Thickness: 0.21" (5.38 mm)
Closed: 4.96" (125.88 mm)
Open: 7.19" (182.58 mm)
Weight: 4.70 oz. (133.24 g)
Handle: Grivory®
Style: Folding Knife w/Kinematic®

- +Kinematic® quickly deploys the blade
- +High carbon stainless steel blade easy to sharpen
- +Stonewash has attractive worn in look

Grivory® is a registered trademark of EMS-CHEMIE AG
Gear compatible sheath available model no. D4040
U.S. Patent Nos. 10,737,400 & D865,480

PROVOKE®

Designed by Joe Caswell in Newbury Park, California

NEW



4041G

Blade: Length: 2.47" (62.69 mm)
Edge: Plain
Steel: 1.4116
Finish: Stonewash
Thickness: 0.21" (5.38 mm)
Closed: 4.96" (125.88 mm)
Open: 7.19" (182.58 mm)
Weight: 4.70 oz. (133.24 g)
Handle: Grivory®
Style: Folding Knife w/Kinematic®

- +Kinematic® quickly deploys the blade
- +High carbon stainless steel blade easy to sharpen
- +Stonewash has attractive worn in look

Grivory® is a registered trademark of EMS-CHEMIE AG
Gear compatible sheath available model no. D4040
U.S. Patent Nos. 10,737,400 & D865,480

PROVOKE®

Designed by Joe Caswell in Newbury Park, California



40410

Blade: Length: 2.47" (62.69 mm)
 Edge: Plain
 Steel: 1.4116
 Finish: Stonewash
 Thickness: 0.21" (5.38 mm)
 Closed: 4.96" (125.88 mm)
 Open: 7.19" (182.58 mm)
 Weight: 4.70 oz. (133.24 g)
 Handle: Grivory®
 Style: Folding Knife w/Kinematic®

- +Kinematic® quickly deploys the blade
- +High carbon stainless steel blade easy to sharpen
- +Stonewash has attractive worn in look

Grivory® is a registered trademark of EMS-CHEMIE AG
 Available as peggable model: 40410C
 Gear compatible sheath available model no. D4040
 U.S. Patent Nos. 10,737,400 & D865,480

PROVOKE®

Designed by Joe Caswell in Newbury Park, California



4041R

Blade: Length: 2.47" (62.69 mm)
 Edge: Plain
 Steel: 1.4116
 Finish: Stonewash
 Thickness: 0.21" (5.38 mm)
 Closed: 4.97" (126.11 mm)
 Open: 7.19" (182.58 mm)
 Weight: 4.70 oz. (133.24 g)
 Handle: Grivory®
 Style: Folding Knife w/Kinematic®

- +Kinematic® quickly deploys the blade
- +High carbon stainless steel blade easy to sharpen
- +Stonewash has attractive worn in look

Grivory® is a registered trademark of EMS-CHEMIE AG
 Gear compatible sheath available model no. D4040
 U.S. Patent Nos. 10,737,400 & D865,480

PROVOKE®

Designed by Joe Caswell in Newbury Park, California



4042

Blade: Length: 2.41" (61.21 mm)
 Edge: Plain
 Steel: D2
 Finish: Titanium Nitride
 Thickness: 0.21" (5.31 mm)
 Closed: 5.06" (128.52 mm)
 Open: 7.25" (184.15 mm)
 Weight: 6.10 oz. (172.93 g)
 Handle: Aluminum
 Style: Folding Knife w/Kinematic®
 Sheath: Material: Boltaron®
 Weight: 1.10 oz. (31.18 g)

- +Kinematic® quickly deploys the blade
- +Ceramic glass breaker for emergencies
- +D2 blade steel retains an edge

Boltaron® is a registered trademark of the SIMONA AMERICA Group.
 U.S. Patent Nos. 10,737,400 & D865,480

PROVOKE® FIRST RESPONDER

Designed by Joe Caswell in Newbury Park, California



4045

Blade: Length: 2.26" (57.33 mm)
 Edge: Plain
 Steel: D2
 Finish: Stonewash
 Thickness: 0.15" (3.73 mm)
 Closed: 4.54" (115.42 mm)
 Open: 6.63" (168.28 mm)
 Weight: 4.40 oz. (124.74 g)
 Handle: Aluminum
 Style: Folding Knife w/Kinematic®

- +Kinematic® quickly deploys the blade
- +D2 blade steel retains an edge
- +Aluminum handle is strong and lightweight

U.S. Patent Nos. 10,737,400 & D865,480

PROVOKE® COMPACT

Designed by Joe Caswell in Newbury Park, California



4123K

Blade: Length: 3.66" (92.96 mm)
Edge: Plain
Steel: 8Cr13MoV
Finish: Stonewash
Thickness: 0.15" (3.73 mm)
Closed: 4.99" (126.77 mm)
Open: 8.69" (220.68 mm)
Weight: 4.80 oz. (136.08 g)
Handle: Carbon Fiber
w/G10 Base | Stainless Steel
Style: Assisted Folding Knife w/Frame Lock

- +Outburst® assisted opening deploys the blade fast
- +Stonewash has attractive worn in look
- +G10 with carbon fiber handle is strong and lightweight

BURNOUT™

Designed by MJ Lerch in Sussex, Wisconsin



4620

Blade: Length: 3.18" (80.65 mm)
Edge: Plain
Steel: 8Cr14MoV
Finish: Satin
Thickness: 0.14" (3.63 mm)
Closed: 4.31" (109.52 mm)
Open: 7.50" (190.50 mm)
Weight: 5.40 oz. (153.09 g)
Handle: Carbon Fiber w/G10 Base
Style: Folding Knife w/Liner Lock

- +IKBS™ ball bearing pivot deploys the blade smooth
- +Liner lock for one hand closing
- +G10 with carbon fiber handle is strong and lightweight

AVANT™

Designed by Eric Ochs in Sherwood, Oregon



4635

Blade: Length: 2.49" (63.22 mm)
Edge: Plain
Steel: 8Cr13MoV
Finish: Stonewash
Thickness: 0.11" (2.82 mm)
Closed: 3.52" (89.46 mm)
Open: 6.00" (152.40 mm)
Weight: 3.80 oz. (107.73 g)
Handle: Stainless Steel
Style: Folding Knife w/Frame Lock

- +Bottle opener in handle
- +IKBS™ ball bearing pivot deploys the blade smooth
- +Stonewash has attractive worn in look

Available as peggable model no. 4635C

BEV-EDGE™

Designed by Eric Ochs in Sherwood, Oregon



5102N

Blade: Length: 2.55" (64.87 mm)
Edge: Plain
Steel: 420J2
Finish: Bead Blast
Thickness: 0.12" (3.15 mm)
Closed: 4.21" (106.86 mm)
Open: 6.25" (158.75 mm)
Weight: 2.50 oz. (70.87 g)
Handle: Stainless Steel
Style: Folding Knife w/Snap Lock™

- +Unique cam action opening and closing
- +Bead blast finish reduces reflection
- +Quick release lanyard for safety

SNAP LOCK™

Designed by Ed Van Hoy in Abingdon, Virginia



5220

Blade: Length: 2.86" (72.54 mm)
 Edge: Plain
 Steel: 8Cr13MoV
 Finish: Stonewash
 Thickness: 0.13" (3.20 mm)
 Closed: 4.17" (105.99 mm)
 Open: 7.06" (179.40 mm)
 Weight: 3.40 oz. (96.39 g)
 Handle: Glass-Reinforced Nylon
 Style: Folding Knife w/Button Lock

- +Ball bearing pivot for fast opening
- +Grooves provide enhanced grip
- +Low profile pocket clip for secure carry

Available as peggable model no. 5220C

BT FIGHTER™ COMPACT

Designed by Brian Tighe in Ridgefield, Ontario, Canada



5225

Blade: Length: 3.64" (92.46 mm)
 Edge: Plain
 Steel: 8Cr13MoV
 Finish: Stonewash
 Thickness: 0.13" (3.23 mm)
 Closed: 5.15" (130.71 mm)
 Open: 8.88" (225.43 mm)
 Weight: 5.00 oz. (141.75 g)
 Handle: Glass-Reinforced Nylon
 Style: Folding Knife w/Button Lock

- +Ball bearing pivot for fast opening
- +Grooves provide enhanced grip
- +Low profile pocket clip for secure carry

BT FIGHTER™

Designed by Brian Tighe in Ridgefield, Ontario, Canada



5240

Blade: Length: 3.25" (82.55 mm)
 Edge: Plain
 Steel: AUS 8
 Finish: Satin
 Thickness: 0.11" (2.79 mm)
 Closed: 4.25" (107.95 mm)
 Open: 7.38" (187.33 mm)
 Weight: 3.30 oz. (93.55 g)
 Handle: Stainless Steel
 Style: Folding Knife w/Klecker Lock

- +Handle integrated Klecker Lock secures the blade
- +Two-tone ti-nitride finished handle has distinctive look
- +Satin blade finish reduces cutting drag

U.S. Patent No. 8,443,521

NIRK™ TIGHE 2

Designed by Brian Tighe in Ridgefield, Ontario, Canada



5241

Blade: Length: 3.17" (80.52 mm)
 Edge: Plain
 Steel: 8Cr14MoV
 Finish: Satin
 Thickness: 0.11" (2.82 mm)
 Closed: 4.27" (108.46 mm)
 Open: 7.44" (188.93 mm)
 Weight: 3.20 oz. (90.72 g)
 Handle: Stainless Steel
 Style: Folding Knife w/Klecker Lock

- +Handle integrated Klecker Lock secures the blade
- +Ball bearing pivot deploys the blade smooth and fast
- +High carbon stainless steel blade easy to sharpen

U.S. Patent No. 8,443,521

NIRK™ TIGHE

Designed by Brian Tighe in Ridgefield, Ontario, Canada



5311

Blade: Length: 2.40" (61.01 mm)
 Edge: Plain
 Steel: 8Cr13MoV
 Finish: Satin
 Thickness: 0.15" (3.68 mm)
 Closed: 3.53" (89.66 mm)
 Open: 5.94" (150.83 mm)
 Weight: 4.20 oz. (119.07 g)
 Handle: Stainless Steel
 Style: Folding Knife w/Frame Lock

- +Thumb slot for one hand opening
- +Satin blade finish reduces cutting drag
- +Frame lock secures the blade

Available as peggable model no. 5311C

PILAR®

Designed by Jesper Voxnaes in Loegstrup, Denmark



5311CU

Blade: Length: 2.38" (60.50 mm)
 Edge: Plain
 Steel: 8Cr13MoV
 Finish: Satin
 Thickness: 0.15" (3.78 mm)
 Closed: 3.51" (89.20 mm)
 Open: 5.85" (148.59 mm)
 Weight: 4.00 oz. (113.40 g)
 Handle: Copper | Stainless Steel
 Style: Folding Knife w/Frame Lock

- +Thumb slot for one hand opening
- +Satin blade finish reduces cutting drag
- +Copper and stainless steel for striking visual

PILAR®

Designed by Jesper Voxnaes in Loegstrup, Denmark



5315

Blade: Length: 2.67" (67.79 mm)
 Edge: Plain
 Steel: 8Cr14MoV
 Finish: Satin
 Thickness: 0.15" (3.73 mm)
 Closed: 4.00" (101.55 mm)
 Open: 6.69" (169.88 mm)
 Weight: 4.20 oz. (119.07 g)
 Handle: Stainless Steel
 Style: Folding Knife w/Frame Lock

- +Large version of best selling Pilar®
- +IKBS™ ball bearing pivot deploys the blade smooth
- +High carbon stainless steel blade easy to sharpen

Available as peggable model: 5315C

PILAR® LARGE

Designed by Jesper Voxnaes in Loegstrup, Denmark



5315G

Blade: Length: 2.67" (67.79 mm)
 Edge: Plain
 Steel: 8Cr14MoV
 Finish: Satin
 Thickness: 0.15" (3.73 mm)
 Closed: 4.00" (101.55 mm)
 Open: 6.69" (169.88 mm)
 Weight: 3.80 oz. (107.73 g)
 Handle: G10 | Stainless Steel
 Style: Folding Knife w/Frame Lock

- +Large version of best selling Pilar®
- +IKBS™ ball bearing pivot deploys the blade smooth
- +High carbon stainless steel blade easy to sharpen

Available as peggable model no. 5315GC

PILAR® LARGE

Designed by Jesper Voxnaes in Loegstrup, Denmark



5317

Blade: Length: 2.97" (75.36 mm)
 Edge: Plain
 Steel: 8Cr13MoV
 Finish: Satin
 Thickness: 0.15" (3.81 mm)
 Closed: 4.26" (108.10 mm)
 Open: 7.19" (182.58 mm)
 Weight: 3.60 oz. (102.06 g)
 Handle: G10 | Stainless Steel
 Style: Folding Knife w/Frame Lock

- +IKBS™ ball bearing pivot deploys the blade smooth
- +High carbon stainless steel blade easy to sharpen
- +Thumb slot for one hand opening

Available as peggable model no. 5317C

PILAR® III

Designed by Jesper Voxnaes in Loegstrup, Denmark



5317D2

Blade: Length: 2.97" (75.36 mm)
 Edge: Plain
 Steel: D2
 Finish: Stonewash
 Thickness: 0.15" (3.81 mm)
 Closed: 4.26" (108.10 mm)
 Open: 7.19" (182.58 mm)
 Weight: 3.80 oz. (107.73 g)
 Handle: G10 | Stainless Steel
 Style: Folding Knife w/Liner Lock

- +IKBS™ ball bearing pivot deploys the blade smooth
- +D2 blade steel retains an edge
- +Thumb slot for one hand opening

PILAR® III

Designed by Jesper Voxnaes in Loegstrup, Denmark



5325

Blade: Length: 3.28" (83.39 mm)
 Edge: Plain
 Steel: 1.4116
 Finish: Satin
 Thickness: 0.11" (2.87 mm)
 Closed: 4.43" (112.62 mm)
 Open: 7.75" (196.85 mm)
 Weight: 3.50 oz. (99.22 g)
 Handle: G10
 Style: Assisted Folding Knife w/Liner Lock

- +Assisted Opening flipper deploys the blade fast
- +IKBS™ ball bearing pivot deploys the blade smooth
- +G10 handle provides exceptional grip

Available as peggable model no. 5325C

TUETO™

Designed by Jesper Voxnaes in Loegstrup, Denmark



5375

Blade: Length: 3.33" (84.63 mm)
 Edge: Plain
 Steel: D2
 Finish: Satin
 Thickness: 0.13" (3.38 mm)
 Closed: 4.43" (112.50 mm)
 Open: 7.75" (196.85 mm)
 Weight: 4.40 oz. (124.74 g)
 Handle: Glass-Reinforced Nylon
 Style: Folding Knife w/Deadbolt® Lock

- +Deadbolt® lock is strong and simple to use
- +IKBS™ ball bearing pivot deploys the blade smooth
- +D2 blade steel retains an edge

U.S. Patent Nos. 9,833,912 & 10,464,221

TRASK™

Designed by Eric Ochs in Sherwood, Oregon



5385

Blade: Length: 2.94" (74.63 mm)
Edge: Plain
Steel: 8Cr13MoV
Finish: Satin
Thickness: 0.12" (3.15 mm)
Closed: 3.89" (98.81 mm)
Open: 6.81" (173.05 mm)
Weight: 3.80 oz. (107.73 g)
Handle: Stainless Steel
Style: Assisted Folding Knife w/Frame Lock

- +Assisted Opening flipper deploys the blade fast
- +IKBS™ ball bearing pivot deploys the blade smooth
- +High carbon stainless steel blade easy to sharpen

Available as peggable model no. 5385C

DELINEATION™

Designed by Eric Ochs in Sherwood, Oregon

NEW



5390

Blade: Length: 2.69" (68.30 mm)
Edge: Plain
Steel: 8Cr13MoV
Finish: Satin
Thickness: 0.13" (3.30 mm)
Closed: 3.76" (95.48 mm)
Open: 6.44" (163.53 mm)
Weight: 2.50 oz. (70.87 g)
Handle: Glass-Reinforced Nylon
Style: Folding Knife w/Liner Lock

- +High carbon stainless steel blade easy to sharpen
- +Utility blade shape
- +Thumb slot for one hand opening

Available as peggable model no. 5390C

PIET™

Designed by Jesper Voxnaes in Loegstrup, Denmark



5401

Blade: Length: 3.97" (100.81 mm)
Edge: Plain
Steel: 1.4116
Finish: Satin
Thickness: 0.15" (3.76 mm)
Closed: 5.46" (138.61 mm)
Open: 9.44" (239.73 mm)
Weight: 6.30 oz. (178.60 g)
Handle: G10
Style: Folding Knife w/Deadbolt® Lock

- +Deadbolt® lock is strong and simple to use
- +IKBS™ ball bearing pivot deploys the blade smooth
- +G10 handle provides exceptional grip

U.S. Patent No. 9,833,912 & 10,464,221

SEISMIC™

Designed by Flavio Ikoma in Presidente Prudente, Brazil



5405

Blade: Length: 3.73" (94.84 mm)
Edge: Plain
Steel: 1.4116
Finish: Satin
Thickness: 0.15" (3.84 mm)
Closed: 5.26" (133.63 mm)
Open: 8.88" (225.43 mm)
Weight: 6.20 oz. (175.77 g)
Handle: Glass-Reinforced Nylon
Style: Folding Knife w/Deadbolt® Lock

- +Deadbolt® lock is strong and simple to use
- +IKBS™ ball bearing pivot deploys the blade smooth
- +Durable glass-reinforced nylon handle

U.S. Patent No. 9,833,912 & 10,464,221

LINCHPIN™

Designed by Flavio Ikoma in Presidente Prudente, Brazil



5406K

Blade: Length: 3.73" (94.84 mm)
 Edge: Plain
 Steel: 1.4116
 Finish: Corrosion Resistant Coating
 Thickness: 0.15" (3.84 mm)
 Closed: 5.26" (133.63 mm)
 Open: 8.88" (225.43 mm)
 Weight: 6.20 oz. (175.77 g)
 Handle: Glass-Reinforced Nylon
 Style: Folding Knife w/Deadbolt® Lock

- +Deadbolt® lock is strong and simple to use
- +IKBS™ ball bearing pivot deploys the blade smooth
- +Veff Serrations™ provide superior cutting power

U.S. Patent Nos. 9,833,912 & 10,464,221

LINCHPIN™

Designed by Flavio Ikoma in Presidente Prudente, Brazil



5460

Blade: Length: 3.41" (86.61 mm)
 Edge: Plain
 Steel: 8Cr13MoV
 Finish: Satin
 Thickness: 0.11" (2.79 mm)
 Closed: 4.31" (109.47 mm)
 Open: 7.69" (195.33 mm)
 Weight: 4.10 oz. (116.23 g)
 Handle: Stainless Steel w/G10 Overlay
 Style: Folding Knife w/Frame Lock

- +IKBS™ ball bearing pivot deploys the blade smooth
- +G10 handle provides exceptional grip
- +Satin blade finish reduces cutting drag

Available as peggable model no. 5460C

FOSSIL™ COMPACT

Designed by Flavio Ikoma in Presidente Prudente, Brazil



5470

Blade: Length: 3.96" (100.58 mm)
 Edge: Plain
 Steel: 8Cr13MoV
 Finish: Satin
 Thickness: 0.15" (3.81 mm)
 Closed: 4.95" (125.73 mm)
 Open: 8.88" (225.55 mm)
 Weight: 6.10 oz. (172.93 g)
 Handle: Stainless Steel w/G10 Overlay
 Style: Folding Knife w/Frame Lock

- +IKBS™ ball bearing pivot deploys the blade smooth
- +G10 handle provides exceptional grip
- +Satin blade finish reduces cutting drag

Available as peggable model no. 5470C

FOSSIL™

Designed by Flavio Ikoma in Presidente Prudente, Brazil



5500

Blade: Length: 2.25" (57.15 mm)
 Edge: Plain
 Steel: 3Cr13
 Finish: Bead Blast
 Thickness: 0.12" (3.05 mm)
 Closed: 3.50" (88.90 mm)
 Open: 5.75" (146.05 mm)
 Weight: 2.30 oz. (65.20 g)
 Handle: Stainless Steel
 Style: Folding Knife w/Frame Lock

- +K.I.S.S. – Keep. It. Super. Simple.
- +Simple intuitive two piece design
- +Bead blast finish reduces reflection

K.I.S.S.®

Designed by Ed Halligan in Ocean Springs, Mississippi



5510

Blade: Length: 2.25" (57.15 mm)
Edge: Combination
Steel: 3Cr13
Finish: Bead Blast
Thickness: 0.12" (3.05 mm)
Closed: 3.50" (88.90 mm)
Open: 5.75" (146.05 mm)
Weight: 2.30 oz. (65.20 g)
Handle: Stainless Steel
Style: Folding Knife w/Frame Lock

- +K.I.S.S. – Keep. It. Super. Simple.
- +Simple intuitive two piece design
- +Triple Point™ Serrations easily cut rope and straps

K.I.S.S.®

Designed by Ed Halligan in Ocean Springs, Mississippi



5520

Blade: Length: 1.75" (44.45 mm)
Edge: Plain
Steel: 3Cr13
Finish: Bead Blast
Thickness: 0.10" (2.54 mm)
Closed: 2.63" (66.68 mm)
Open: 4.75" (120.65 mm)
Weight: 0.90 oz. (25.51 g)
Handle: Stainless Steel
Style: Folding Knife w/Frame Lock

- +P.E.C.K. – Precision. Engineered. Compact. Knife.
- +Simple intuitive two piece design
- +Bead blast finish reduces reflection

DELILAH'S P.E.C.K.™

Designed by Ed Halligan in Ocean Springs, Mississippi



5820

Blade: Length: 3.63" (92.15 mm)
Edge: Plain
Steel: 8Cr13MoV
Finish: Satin
Thickness: 0.14" (3.48 mm)
Closed: 4.79" (121.69 mm)
Open: 8.44" (214.33 mm)
Weight: 5.90 oz. (167.26 g)
Handle: G10
Style: Folding Knife w/Liner Lock

- +IKBS™ ball bearing pivot deploys the blade smooth
- +G10 handle provides exceptional grip
- +Flipper deploys the blade fast

AVANT™ -TAC

Designed by Eric Ochs in Sherwood, Oregon



6130

Blade: Length: 3.26" (82.80 mm)
Edge: Plain
Steel: 8Cr13MoV
Finish: Satin
Thickness: 0.13" (3.20 mm)
Closed: 4.52" (114.83 mm)
Open: 7.75" (196.85 mm)
Weight: 4.50 oz. (127.57 g)
Handle: Stainless Steel
Style: Folding Knife w/Frame Lock

- +Frame lock secures the blade
- +Sheepsfoot blade for cutting utility
- +Durable stainless steel handle

JETTISON™

Designed by Robert Carter in Hillister, Texas



6215

Blade: Length: 3.19" (80.90 mm)
 Edge: Plain
 Steel: 8Cr13MoV
 Finish: Oxide
 Thickness: 0.13" (3.28 mm)
 Closed: 4.47" (113.56 mm)
 Open: 7.63" (193.68 mm)
 Weight: 3.40 oz. (96.39 g)
 Handle: Aluminum
 Style: Folding Knife w/Liner Lock

- +IKBS™ ball bearing pivot deploys the blade smooth
- +Flipper deploys the blade fast
- +Oxide finish improves corrosion resistance

Available as peggable model no. 6215C

CALIGO™

Designed by T.J. Schwarz in Boise, Idaho



6235

Blade: Length: 3.19" (81.05 mm)
 Edge: Plain
 Steel: D2
 Finish: Satin
 Thickness: 0.13" (3.40 mm)
 Closed: 4.68" (118.92 mm)
 Open: 7.88" (200.03 mm)
 Weight: 5.00 oz. (141.75 g)
 Handle: Cord-Wrapped Glass-Reinforced Nylon
 Style: Folding Knife w/Deadbolt® Lock

- +Deadbolt® lock is strong and simple to use
- +D2 blade steel retains an edge
- +Cord wrapped handle for grip

U.S. Patent Nos. 9,833,912 & 10,464,221

PARASCALE™

Designed by T.J. Schwarz in Boise, Idaho



6280

Blade: Length: 3.00" (76.12 mm)
 Edge: Plain
 Steel: 8Cr13MoV
 Finish: Stonewash
 Thickness: 0.12" (3.07 mm)
 Closed: 4.36" (110.67 mm)
 Open: 7.38" (187.33 mm)
 Weight: 3.60 oz. (102.06 g)
 Handle: G10 | Stainless Steel
 Style: Folding Knife w/Frame Lock

- +High carbon stainless steel blade easy to sharpen
- +Ergonomic handle provides comfortable grip
- +Anodized orange accents

Available as peggable model no. 6280C

OVERLAND™

Designed by T.J. Schwarz in Boise, Idaho



6290

Blade: Length: 3.08" (78.31 mm)
 Edge: Plain
 Steel: 8Cr14MoV
 Finish: Oxide
 Thickness: 0.13" (3.18 mm)
 Closed: 4.22" (107.19 mm)
 Open: 7.31" (185.75 mm)
 Weight: 3.10 oz. (87.88 g)
 Handle: Glass-Reinforced Nylon
 Style: Folding Knife w/Liner Lock

- +Skeletonized handle reduces weight
- +Flipper deploys the blade fast
- +Anodized red accents

Available as peggable model no. 6290C

THERO™

Designed by T.J. Schwarz in Boise, Idaho



6321

Blade: Length: 2.61" (66.29 mm)
 Edge: Plain
 Steel: D2
 Finish: Satin
 Thickness: 0.13" (3.40 mm)
 Closed: 3.78" (96.04 mm)
 Open: 6.38" (161.93 mm)
 Weight: 3.30 oz. (93.55 g)
 Handle: Aluminum
 Style: Field Strip Folding Knife w/Liner Lock

- +Field Strip take apart your knife for cleaning without tools
- +IKBS™ ball bearing pivot deploys the blade smooth
- +D2 blade steel retains an edge

U.S. Patent Nos. 10,226,871 & 10,759,067

COTTIDAE™

Designed by Jesper Voxnaes in Loegstrup, Denmark



6433

Blade: Length: 2.95" (74.96 mm)
 Edge: Plain
 Steel: 8Cr13MoV
 Finish: Satin
 Thickness: 0.11" (2.69 mm)
 Closed: 3.78" (95.91 mm)
 Open: 6.75" (171.45 mm)
 Weight: 2.30 oz. (65.20 g)
 Handle: Glass-Reinforced Nylon
 Style: Folding Knife w/Front Lock

- +High carbon stainless steel blade easy to sharpen
- +Durable glass-reinforced nylon handle
- +Front lock mechanism secures the blade

KITH

Designed by Ken Steigerwalt in Orangeville, Pennsylvania



6434

Blade: Length: 3.50" (88.82 mm)
 Edge: Plain
 Steel: 8Cr13MoV
 Finish: Satin
 Thickness: 0.13" (3.23 mm)
 Closed: 4.52" (114.78 mm)
 Open: 8.00" (203.20 mm)
 Weight: 3.70 oz. (104.89 g)
 Handle: Glass-Reinforced Nylon
 Style: Folding Knife w/Front Lock

- +High carbon stainless steel blade easy to sharpen
- +Durable glass-reinforced nylon handle
- +Front lock mechanism secures the blade

KOVA™

Designed by Ken Steigerwalt in Orangeville, Pennsylvania



6450K

Blade: Length: 2.88" (73.03 mm)
 Edge: Plain
 Steel: 8Cr14MoV
 Finish: Titanium Nitride
 Thickness: 0.09" (2.31 mm)
 Closed: 3.66" (92.96 mm)
 Open: 6.50" (165.10 mm)
 Weight: 2.40 oz. (68.04 g)
 Handle: G10
 Style: Folding Knife w/Liner Lock

- +G10 handle provides exceptional grip
- +Ti-nitride finish improves corrosion resistance
- +Thumb stud for one hand opening

DRIFTER



6450S

Blade: Length: 2.88" (73.03 mm)
 Edge: Plain
 Steel: 8Cr14MoV
 Finish: Satin
 Thickness: 0.09" (2.31 mm)
 Closed: 3.66" (92.96 mm)
 Open: 6.50" (165.10 mm)
 Weight: 3.20 oz. (90.72 g)
 Handle: Stainless Steel
 Style: Folding Knife w/Frame Lock

- +Satin blade finish reduces cutting drag
- +Durable stainless steel handle
- +Frame lock secures the blade

DRIFTER



6470

Blade: Length: 2.14" (54.25 mm)
 Edge: Plain
 Steel: 8Cr13MoV
 Finish: Titanium Nitride
 Thickness: 0.09" (2.21 mm)
 Closed: 2.98" (75.64 mm)
 Open: 5.15" (130.71 mm)
 Weight: 1.80 oz. (51.03 g)
 Handle: Stainless Steel
 Style: Folding Knife w/Frame Lock

- +Ti-nitride finish improves corrosion resistance
- +Durable stainless steel handle
- +Grooves on blade for control

PAZODA™ 2



6480

Blade: Length: 2.74" (69.65 mm)
 Edge: Plain
 Steel: 8Cr13MoV
 Finish: Titanium Nitride
 Thickness: 0.10" (2.64 mm)
 Closed: 3.74" (95.10 mm)
 Open: 6.50" (165.10 mm)
 Weight: 3.20 oz. (90.72 g)
 Handle: Stainless Steel
 Style: Folding Knife w/Frame Lock

- +Ti-nitride finish improves corrosion resistance
- +Durable stainless steel handle
- +Grooves on blade for control

PAZODA™



6525

Blade: Length: 3.18" (80.65 mm)
 Edge: Plain
 Steel: 8Cr13MoV
 Finish: Satin
 Thickness: 0.15" (3.68 mm)
 Closed: 4.26" (108.25 mm)
 Open: 7.44" (188.93 mm)
 Weight: 4.10 oz. (116.23 g)
 Handle: Aluminum
 Style: Assisted Folding Knife w/Liner Lock

- +Assisted Opening flipper deploys the blade fast
- +IKBS™ ball bearing pivot deploys the blade smooth
- +High carbon stainless steel blade easy to sharpen

LANNY

Designed by Liong Mah in Palm Bay, Florida



6535

Blade: Length: 3.19" (80.98 mm)
Edge: Plain
Steel: D2
Finish: Satin
Thickness: 0.12" (3.02 mm)
Closed: 4.15" (105.38 mm)
Open: 7.38" (187.33 mm)
Weight: 3.40 oz. (96.39 g)
Handle: Glass-Reinforced Nylon
Style: Assisted Folding Knife w/Liner Lock

- +Assisted Opening flipper deploys the blade fast
- +IKBS™ ball bearing pivot deploys the blade smooth
- +D2 blade steel retains an edge

MAH-HAWK™

Designed by Liong Mah in Palm Bay, Florida

NEW



6540

Blade: Length: 2.77" (70.33 mm)
Edge: Plain
Steel: 8Cr13MoV
Finish: Satin
Thickness: 0.13" (3.25 mm)
Closed: 3.67" (93.14 mm)
Open: 6.38" (161.93 mm)
Weight: 3.80 oz. (107.73 g)
Handle: Stainless Steel
Style: Folding Knife w/Frame Lock

- +Sharpened blade tip for precise cutting
- +Durable stainless steel handle
- +Frame lock secures the blade

CHEHALEM™

Designed by Eric Ochs in Sherwood, Oregon



6850

Blade: Length: 3.38" (85.85 mm)
Edge: Plain
Steel: 8Cr14MoV
Finish: Satin
Thickness: 0.11" (2.72 mm)
Closed: 4.22" (107.24 mm)
Open: 7.63" (193.68 mm)
Weight: 3.50 oz. (99.22 g)
Handle: G10
Style: Assisted Folding Knife w/Liner Lock

- +Outburst® assisted opening deploys the blade fast
- +Safety integrated thumbstud prevents accidental opening
- +G10 handle provides exceptional grip

U.S. Patent No. 7,918,028

IGNITOR®

Designed by Ken Steigerwalt in Orangeville, Pennsylvania



6855

Blade: Length: 3.38" (85.85 mm)
Edge: Combination
Steel: 8Cr14MoV
Finish: Satin
Thickness: 0.11" (2.72 mm)
Closed: 4.22" (107.24 mm)
Open: 7.63" (193.68 mm)
Weight: 3.50 oz. (99.22 g)
Handle: G10
Style: Assisted Folding Knife w/Liner Lock

- +Outburst® assisted opening deploys the blade fast
- +Safety integrated thumbstud prevents accidental opening
- +Veff Serrations™ provide superior cutting power

Available as peggable model no. 6855C
U.S. Patent No. 7,918,028

IGNITOR®

Designed by Ken Steigerwalt in Orangeville, Pennsylvania



6860

Blade: Length: 3.38" (85.85 mm)
 Edge: Plain
 Steel: 8Cr14MoV
 Finish: Titanium Nitride
 Thickness: 0.11" (2.72 mm)
 Closed: 4.22" (107.24 mm)
 Open: 7.63" (193.68 mm)
 Weight: 3.50 oz. (99.22 g)
 Handle: G10
 Style: Assisted Folding Knife w/Liner Lock

- +Outburst® assisted opening deploys the blade fast
- +Safety integrated thumbstud prevents accidental opening
- +G10 handle provides exceptional grip

U.S. Patent No. 7,918,028

IGNITOR® T

Designed by Ken Steigerwalt in Orangeville, Pennsylvania



6865

Blade: Length: 3.38" (85.85 mm)
 Edge: Plain
 Steel: 8Cr14MoV
 Finish: Titanium Nitride
 Thickness: 0.11" (2.72 mm)
 Closed: 4.22" (107.24 mm)
 Open: 7.63" (193.68 mm)
 Weight: 3.50 oz. (99.22 g)
 Handle: G10
 Style: Assisted Folding Knife w/Liner Lock

- +Outburst® assisted opening deploys the blade fast
- +Safety integrated thumbstud prevents accidental opening
- +Veff Serrations™ provide superior cutting power

Available as peggable model no. 6865C
 U.S. Patent No. 7,918,028

IGNITOR® T

Designed by Ken Steigerwalt in Orangeville, Pennsylvania



6925

Blade: Length: 2.51" (63.80 mm)
 Edge: Plain
 Steel: 8Cr13MoV
 Finish: Satin
 Thickness: 0.09" (2.29 mm)
 Closed: 3.79" (96.22 mm)
 Open: 7.25" (184.15 mm)
 Weight: 4.00 oz. (113.40 g)
 Handle: Pakkawood
 Style: Folding Knife w/Slip Joint

- +Slip joint opens and closes with two hands
- +Foil knife to remove capsule
- +Corkscrew opener
- +Bottle opener in handle

TRIPLE PLAY™

Designed by Philip Booth in Ithaca, Michigan



7016

Blade: Length: 3.57" (90.68 mm)
 Edge: Plain
 Steel: 8Cr13MoV
 Finish: Satin
 Thickness: 0.12" (3.10 mm)
 Closed: 4.42" (112.29 mm)
 Open: 8.06" (204.80 mm)
 Weight: 3.60 oz. (102.06 g)
 Handle: Stainless Steel
 Style: Assisted Folding Knife w/Frame Lock

- +Outburst® assisted opening deploys the blade fast
- +High carbon stainless steel blade easy to sharpen
- +Frame lock secures the blade

FLAT OUT™

Designed by Matthew Lerch in Sussex, Wisconsin



7031

Blade: Length: 2.90" (73.71 mm)
Edge: Plain
Steel: 8Cr13MoV
Finish: Bead Blast
Thickness: 0.13" (3.18 mm)
Closed: 4.08" (103.61 mm)
Open: 6.88" (174.63 mm)
Weight: 3.10 oz. (87.88 g)
Handle: G10 | Stainless Steel
Style: Assisted Folding Knife w/Frame Lock

- +Outburst® assisted opening deploys the blade fast
- +G10 handle provides exceptional grip
- +Frame lock secures the blade

FULL THROTTLE™

Designed by Matthew Lerch in Sussex, Wisconsin



7050

Blade: Length: 3.62" (92.00 mm)
Edge: Combination
Steel: 8Cr13MoV
Finish: Oxide
Thickness: 0.13" (3.23 mm)
Closed: 4.55" (115.65 mm)
Open: 8.19" (207.98 mm)
Weight: 4.70 oz. (133.24 g)
Handle: Aluminum w/Glass-Reinforced
Nylon Inlay
Style: Folding Knife w/Liner Lock

- +Veff Serration™ provides superior cutting power
- +Flipper deploys the blade fast
- +Oxide finish improves corrosion resistance

Learn more about Forged by War®: www.crkt.com/forged-by-war
Available as peggable model no. 7050C

SEPTIMO™

Designed by Jeremy Valdez in Olalla, Washington



7051

Blade: Length: 2.86" (72.75 mm)
Edge: Combination
Steel: 8Cr13MoV
Finish: Oxide
Thickness: 0.10" (2.44 mm)
Closed: 4.84" (122.96 mm)
Open: 7.63" (193.68 mm)
Weight: 4.40 oz. (124.74 g)
Handle: Aluminum w/Glass-Reinforced
Nylon Inlay
Style: Multi-Tool

- +Veff Serration™ provides superior cutting of ropes and straps
- +Bottle opener, flat screwdriver, glass breaker
- +Adjustable wrench

Learn more about Forged by War®: www.crkt.com/forged-by-war

SEPTIMO™ MULTI-TOOL

Designed by Jeremy Valdez in Olalla, Washington



7076

Blade: Length: 3.62" (92.00 mm)
Edge: Plain
Steel: 8Cr13MoV
Finish: Satin
Thickness: 0.12" (3.07 mm)
Closed: 4.72" (119.86 mm)
Open: 8.38" (212.73 mm)
Weight: 4.20 oz. (119.07 g)
Handle: Stainless Steel
Style: Folding Knife w/Frame Lock

- +High carbon stainless steel blade easy to sharpen
- +Flipper deploys the blade fast
- +Frame lock secures the blade

UP & AT 'EM™

Designed by Matthew Lerch in Sussex, Wisconsin



7086

Blade: Length: 1.72" (43.61 mm)
 Edge: Plain
 Steel: 5Cr15MoV
 Finish: Bead Blast
 Thickness: 0.09" (2.26 mm)
 Closed: 3.51" (89.05 mm)
 Open: 4.81" (122.25 mm)
 Weight: 1.70 oz. (48.19 g)
 Handle: Glass-Reinforced Nylon
 Style: Folding Knife w/Slip Joint

- +High carbon stainless steel blade easy to sharpen
- +Slip joint secures blade when open and closed
- +Convenient bottle opener

Available as peggable model no. 7086C

DUALLY™

Designed by Richard Rogers in Magdalena, New Mexico



7091

Blade: Length: 2.89" (73.41 mm)
 Edge: Plain
 Steel: D2
 Finish: Stonewash
 Thickness: 0.11" (2.77 mm)
 Closed: 4.05" (102.87 mm)
 Open: 6.94" (176.23 mm)
 Weight: 3.10 oz. (87.88 g)
 Handle: Stainless Steel w/G10 Inlay
 Style: Folding Knife w/Frame Lock

- +IKBS™ ball bearing pivot deploys the blade smooth
- +D2 blade steel retains an edge
- +Flipper deploys the blade fast

CINCO™

Designed by Richard Rogers in Magdalena, New Mexico



7095

Blade: Length: 2.61" (66.27 mm)
 Edge: Plain
 Steel: 1.4116
 Finish: Satin
 Thickness: 0.09" (2.26 mm)
 Closed: 3.56" (90.37 mm)
 Open: 6.13" (155.58 mm)
 Weight: 1.60 oz. (45.36 g)
 Handle: Glass-Reinforced Nylon
 Style: Folding Knife w/Liner Lock

- +IKBS™ ball bearing pivot deploys the blade smooth
- +High carbon stainless steel blade easy to sharpen
- +Flipper deploys the blade fast

U.S. Patent No. D931076

Available as peggable model no. 7095C

CEO COMPACT

Designed by Richard Rogers in Magdalena, New Mexico



7096

Blade: Length: 3.11" (78.92 mm)
 Edge: Plain
 Steel: 8Cr13MoV
 Finish: Satin
 Thickness: 0.09" (2.18 mm)
 Closed: 4.45" (112.98 mm)
 Open: 7.63" (193.68 mm)
 Weight: 2.10 oz. (59.53 g)
 Handle: Glass-Reinforced Nylon
 Style: Folding Knife w/Liner Lock

- +Slim profile fits comfortably in pocket
- +Thumbstud with IKBS™ ball bearing pivot deploys the blade fast
- +Durable glass-reinforced nylon handle

Available as peggable model no. 7096C

CEO

Designed by Richard Rogers in Magdalena, New Mexico



7096YGK

Blade: Length: 3.11" (78.92 mm)
 Edge: Plain
 Steel: 8Cr13MoV
 Finish: Stonewash
 Thickness: 0.09" (2.18 mm)
 Closed: 4.45" (112.98 mm)
 Open: 7.63" (193.68 mm)
 Weight: 2.20 oz. (62.37 g)
 Handle: Glass-Reinforced Nylon
 Style: Folding Knife w/Liner Lock

- +Thumbstud with IKBS™ ball bearing pivot deploys the blade fast
- +High carbon stainless steel blade easy to sharpen
- +Liner lock for one hand closing

CEO

Designed by Richard Rogers in Magdalena, New Mexico



7097

Blade: Length: 3.35" (85.14 mm)
 Edge: Plain
 Steel: AUS 8
 Finish: Satin
 Thickness: 0.09" (2.29 mm)
 Closed: 4.35" (110.39 mm)
 Open: 7.69" (195.28 mm)
 Weight: 1.90 oz. (53.86 g)
 Handle: Glass-Reinforced Nylon
 Style: Folding Knife w/Liner Lock

- +IKBS™ ball bearing pivot deploys the blade smooth
- +High carbon stainless steel blade easy to sharpen
- +Flipper deploys the blade fast

U.S. Patent No. D931076

Available as peggable model no. 7097C

CEO

Designed by Richard Rogers in Magdalena, New Mexico



7097K

Blade: Length: 3.35" (85.14 mm)
 Edge: Plain
 Steel: AUS 8
 Finish: EDP
 Thickness: 0.09" (2.29 mm)
 Closed: 4.35" (110.39 mm)
 Open: 7.69" (195.28 mm)
 Weight: 1.90 oz. (53.86 g)
 Handle: Glass-Reinforced Nylon
 Style: Folding Knife w/Liner Lock

- +IKBS™ ball bearing pivot deploys the blade smooth
- +High carbon stainless steel blade easy to sharpen
- +Flipper deploys the blade fast

U.S. Patent No. D931076

Available as peggable model no. 7097KC

CEO

Designed by Richard Rogers in Magdalena, New Mexico



7100

Blade: Length: 3.14" (79.86 mm)
 Edge: Plain
 Steel: 8Cr13MoV
 Finish: Bead Blast
 Thickness: 0.10" (2.41 mm)
 Closed: 4.10" (104.11 mm)
 Open: 7.22" (183.34 mm)
 Weight: 1.80 oz. (51.03 g)
 Handle: G10
 Style: Folding Knife w/Slip Joint

- +Nail nick for ease of opening
- +Slip joint opens and closes with two hands
- +G10 handle provides exceptional grip

Available as peggable model no. 7100C

VENANDI™

Designed by Richard Rogers in Magdalena, New Mexico



7115

Blade: Length: 3.25" (82.45 mm)
 Edge: Plain
 Steel: 8Cr13MoV
 Finish: Bead Blast
 Thickness: 0.13" (3.18 mm)
 Closed: 4.46" (113.21 mm)
 Open: 7.69" (195.28 mm)
 Weight: 3.20 oz. (90.72 g)
 Handle: G10
 Style: Folding Knife w/Liner Lock

- +Thumb stud for one hand opening
- +G10 handle provides exceptional grip
- +Reversible pocket clip for secure carry

Available as peggable model no. 7115C

MONTOSA™

Designed by Richard Rogers in Magdalena, New Mexico



7123

Blade: Length: 3.32" (84.38 mm)
 Edge: Plain
 Steel: 1.4116
 Finish: Bead Blast
 Thickness: 0.09" (2.36 mm)
 Closed: 4.47" (113.44 mm)
 Open: 7.81" (198.45 mm)
 Weight: 2.00 oz. (56.70 g)
 Handle: Glass-Reinforced Nylon
 Style: Folding Knife w/Liner Lock

- +IKBS™ ball bearing pivot deploys the blade smooth
- +High carbon stainless steel blade easy to sharpen
- +Flipper deploys the blade fast

Available as peggable model no. 7123C

SEIS™

Designed by Richard Rogers in Magdalena, New Mexico



7140

Blade: Length: 2.78" (70.69 mm)
 Edge: Plain
 Steel: 8Cr14MoV
 Finish: Stonewash
 Thickness: 0.09" (2.26 mm)
 Closed: 3.84" (97.59 mm)
 Open: 6.63" (168.28 mm)
 Weight: 1.80 oz. (51.03 g)
 Handle: G10 | Stainless Steel
 Style: Folding Knife w/Frame Lock

- +IKBS™ ball bearing pivot deploys the blade smooth
- +G10 handle provides exceptional grip in all weather conditions
- +Frame lock secures the blade in the open position

Available as peggable model no. 7140C

INARA™

Designed by Richard Rogers in Magdalena, New Mexico



7150

Blade: Length: 2.71" (68.73 mm)
 Edge: Plain
 Steel: D2
 Finish: Stonewash
 Thickness: 0.11" (2.90 mm)
 Closed: 4.81" (122.22 mm)
 Open: 7.50" (190.50 mm)
 Weight: 2.80 oz. (79.38 g)
 Handle: G10
 Style: Folding Knife w/Liner Lock

- +IKBS™ ball bearing pivot deploys the blade smooth
- +D2 blade steel retains an edge
- +Copper backspacer ring

IBI™

Designed by Jesper Voxnaes in Loegstrup, Denmark



7160

Blade: Length: 3.53" (89.59 mm)
Edge: Plain
Steel: 8Cr13MoV
Finish: Stonewash
Thickness: 0.12" (3.15 mm)
Closed: 4.50" (114.30 mm)
Open: 8.00" (203.20 mm)
Weight: 3.60 oz. (102.06 g)
Handle: G10
Style: Assisted Folding Knife w/Liner Lock

+Assisted Opening flipper deploys the blade fast
+IKBS™ ball bearing pivot deploys the blade smooth
+High carbon stainless steel blade easy to sharpen

INTENTION

Designed by Eric Ochs in Sherwood, Oregon



7190

Blade: Length: 2.75" (69.77 mm)
Edge: Plain
Steel: 8Cr13MoV
Finish: Bead Blast
Thickness: 0.09" (2.21 mm)
Closed: 4.19" (106.48 mm)
Open: 6.81" (173.05 mm)
Weight: 2.50 oz. (70.87 g)
Handle: Stainless Steel w/Glass-Reinforced
Nylon Inlay
Style: Folding Knife w/Slip Joint

+IKBS™ ball bearing pivot deploys the blade smooth
+High carbon stainless steel blade easy to sharpen
+Slip joint for opening and closing

Available as peggable model no. 7190C

SYMMETRY™

Designed by Richard Rogers in Magdalena, New Mexico



7270

Blade: Length: 3.25" (82.52 mm)
Edge: Plain
Steel: 8Cr13MoV
Finish: Satin
Thickness: 0.11" (2.69 mm)
Closed: 4.47" (113.46 mm)
Open: 7.75" (196.85 mm)
Weight: 5.80 oz. (164.43 g)
Handle: Glass-Reinforced Nylon w/Stainless
Steel Inlay
Style: Folding Knife w/Liner Lock

+Flipper deploys the blade fast
+Versatile cleaver blade for cutting
+Liner lock for one hand closing

RIPSNORT™

Designed by Philip Booth in Ithaca, Michigan



7271

Blade: Length: 3.48" (88.49 mm)
Edge: Plain
Steel: 8Cr13MoV
Finish: Satin
Thickness: 0.13" (3.23 mm)
Closed: 4.81" (122.22 mm)
Open: 8.28" (210.34 mm)
Weight: 6.20 oz. (175.77 g)
Handle: Glass-Reinforced Nylon w/Stainless
Steel Inlay
Style: Folding Knife w/Liner Lock

+IKBS™ ball bearing pivot deploys the blade smooth
+High carbon stainless steel blade easy to sharpen
+Thumb stud for one hand opening

RIPSNORT™ II

Designed by Philip Booth in Ithaca, Michigan



NEW

7471

Blade: Length: 4.37" (110.97 mm)
 Edge: Plain
 Steel: Sandvik 12C27™
 Finish: Satin
 Thickness: 0.13" (3.25 mm)
 Closed: 5.49" (139.50 mm)
 Open: 9.88" (250.83 mm)
 Weight: 6.10 oz. (172.93 g)
 Handle: Resin Infused Fiber w/Stainless Steel Bolster
 Style: Assisted Folding Knife w/Liner Lock

+Assisted Opening flipper deploys the blade fast
 +IKBS™ ball bearing pivot deploys the blade smooth
 +Sandvik 12C27™ blade steel retains an edge

RITUAL™

Designed by Alan Folts in Melbourne, Florida



7524

Blade: Length: 2.38" (60.45 mm)
 Edge: Plain
 Steel: 420J2
 Finish: Satin
 Thickness: 0.12" (3.10 mm)
 Overall: 5.85" (148.49 mm)
 Weight: 1.10 oz. (31.18 g)
 Handle: Stainless Steel
 Style: Fixed Blade Knife w/Sheath
 Sheath: Material: Thermoplastic
 Weight: 0.80 oz. (22.68 g)

+High carbon stainless steel blade easy to sharpen
 +Skeletonized handle reduces weight
 +Textured handle for grip

Available as peggable model no. 7524C

FEISTY™

Designed by Jeff Park in Mililani, Hawaii

NEW



7530

Blade: Length: 3.54" (89.81 mm)
 Edge: Plain
 Steel: AUS 8
 Finish: Satin
 Thickness: 0.12" (3.15 mm)
 Closed: 4.50" (114.38 mm)
 Open: 8.06" (204.80 mm)
 Weight: 2.40 oz. (68.04 g)
 Handle: Aluminum
 Style: Folding Knife w/Liner Lock

+IKBS™ ball bearing pivot deploys the blade smooth
 +Flipper deploys the blade fast
 +Aluminum handle has distinctive look

Available as peggable model no. 7530C

CROSSBONES

Designed by Jeff Park in Mililani, Hawaii



7532

Blade: Length: 4.85" (123.06 mm)
 Edge: Plain
 Steel: AUS 8
 Finish: Satin
 Thickness: 0.16" (4.01 mm)
 Closed: 6.13" (155.58 mm)
 Open: 11.00" (279.40 mm)
 Weight: 5.60 oz. (158.76 g)
 Handle: Aluminum
 Style: Folding Knife w/Liner Lock

+IKBS™ ball bearing pivot deploys the blade smooth
 +Large knife for heft and cutting power
 +High carbon stainless steel blade easy to sharpen

JUMBONES

Designed by Jeff Park in Mililani, Hawaii



7920

Blade: Length: 3.63" (92.20 mm)
Edge: Plain
Steel: 1.4116
Finish: Satin
Thickness: 0.13" (3.25 mm)
Closed: 4.59" (116.61 mm)
Open: 8.19" (207.98 mm)
Weight: 4.60 oz. (130.41 g)
Handle: Carbon Fiber w/G10 Base
Style: Assisted Folding Knife w/Liner Lock

- +Assisted Opening flipper deploys the blade fast
- +IKBS™ ball bearing pivot deploys the blade smooth
- +G10 with carbon fiber handle is strong and lightweight

P.S.D.™ (PARTICLE. SEPARATION. DEVICE.)

Designed by Jim Hammond in Birmingham, Alabama



7920K

Blade: Length: 3.63" (92.20 mm)
Edge: Combination
Steel: 1.4116
Finish: EDP
Thickness: 0.13" (3.25 mm)
Closed: 4.59" (116.61 mm)
Open: 8.19" (207.98 mm)
Weight: 4.60 oz. (130.41 g)
Handle: Carbon Fiber w/G10 Base
Style: Assisted Folding Knife w/Liner Lock

- +Assisted Opening flipper deploys the blade fast
- +IKBS™ ball bearing pivot deploys the blade smooth
- +Veff Serrations™ provide superior cutting power

P.S.D.™ (PARTICLE. SEPARATION. DEVICE.)

Designed by Jim Hammond in Birmingham, Alabama



9011

Length: 3.24" (82.17 mm)
Weight: 0.90 oz. (25.51 g)
Handle: Stainless Steel

- +Useful pry-bar
- +Convenient bottle opener
- +Multi-wrench and flat screwdriver for utility
- +Ceramic glass breaker for emergencies

Carabiner is non-load bearing

PRYMA™

Designed by Jesper Voxnaes in Loegstrup, Denmark



9031

Blade: Steel: 40J2
Closed: 3.27" (83.08 mm)
Open: 5.88" (149.45 mm)
Weight: 1.20 oz. (34.02 g)
Handle: Glass-Reinforced Nylon

- +Emergency seat belt cutter
- +Glass breaker for emergencies
- +Attaches to seatbelt for quick deployment

U.S. Patent No. D642,444

EXITOOL®

Designed by Russ Kommer in Fargo, North Dakota



9082

Blade: Length: 1.42" (36.17 mm)
 Edge: Plain
 Steel: 5Cr15MoV
 Finish: Satin
 Thickness: 0.14" (3.66 mm)
 Closed: 3.23" (82.04 mm)
 Open: 4.59" (116.56 mm)
 Weight: 2.20 oz. (62.37 g)
 Handle: Stainless Steel
 Style: Folding Knife w/Slip Joint

- +High carbon stainless steel blade easy to sharpen
- +Slip joint for opening and closing
- +Carabiner for quick attachment

Carabiner is non-load bearing
 Available as peggable model no. 9082C

COMPANO™

Designed by Mike Bond in Pearl City, Hawaii



9096

Length: 3.38" (85.73 mm)
 Weight: 0.60 oz. (17.01 g)
 Handle: Glass-Reinforced Nylon | Stainless Steel

- +Seat belt strap cutter
- +Field sharpener goes anywhere
- +Flat screwdriver
- +Convenient bottle opener

CRKT® MICRO TOOL & KEYCHAIN SHARPENER™

Designed by Tom Stokes in Williamsburg, Virginia



9100C

Length: 4.00" (101.60 mm)
 Weight: 1.50 oz. (42.52 g)
 Handle: Stainless Steel

- +Useful spoon fork combination
- +Flat screwdriver, 6, 8, 10mm hex
- +Convenient bottle opener

Carabiner is non-load bearing

EAT'N TOOL®

Designed by Liong Mah in Palm Bay, Florida



9100KC

Length: 4.00" (101.60 mm)
 Weight: 1.50 oz. (42.52 g)
 Handle: Stainless Steel

- +Useful spoon fork combination
- +Flat screwdriver, 6, 8, 10mm hex
- +Convenient bottle opener

Carabiner is non-load bearing

EAT'N TOOL®

Designed by Liong Mah in Palm Bay, Florida



9110C

Length: 6.13" (155.70 mm)
 Weight: 2.70 oz. (76.54 g)
 Handle: Stainless Steel

- +Useful spoon fork combination
- +Flat screwdriver, 6, 8, 10mm hex
- +Bottle opener, GI style can opener

Carabiner is non-load bearing

EAT'N TOOL® XL

Designed by Liong Mah in Palm Bay, Florida



9704

Length: 2.70" (68.63 mm)
 Weight: 2.20 oz. (62.37 g)
 Handle: Glass-Reinforced Nylon

- +Torx - T6 and T8
- +Tungsten carbide field sharpener with ceramic honing edge
- +Convenient bottle opener
- +Flat screwdriver
- +Portable utility

KNIFE MAINTENANCE TOOL

Designed by Tom Stokes in Williamsburg, Virginia



9705

Length: 3.57" (90.60 mm)
 Weight: 1.10 oz. (31.18 g)
 Handle: Glass-Reinforced Nylon | Stainless Steel

- +Key ring for quick access
- +Handle provides a secure grip
- +Phillips screwdriver

WILLIAMS DEFENSE KEY

Designed by James Williams in Vass, North Carolina



9910

Length: 3.24" (82.40 mm)
 Weight: 3.10 oz. (87.88 g)
 Handle: Aluminum

- +Magnet in driver tip secures driver bit
- +Compact driver easily fits in your hand for precision work
- +Holds up to 6 bits - ships with T6, T7, T8, T9, T10, T15

6 BIT DRIVER TOOL

Designed by Joe Wu in Mountain View, California



9911

Length: 3.73" (94.79 mm)
 Weight: 2.50 oz. (70.87 g)
 Handle: Brass
 Material: Leather

- +Ball bearing spinner in driver for smooth operation
- +Magnet in driver tip secures driver bit
- +Compact driver easily fits in your hand for precision work
- +Textured brass driver for grip
- +Leather Tool roll holds up to two drivers
- +Holds up to 13 bits - ships with T6, T7, T8, T9, T10, T15, T20, PH1, PH2, PH3, 1.0x6mm, 0.8x5.5mm, 0.6x4.5mm

HEX BIT DRIVER TOOL ROLL

Designed by Joe Wu in Mountain View, California



9911-2

Length: 3.26" (82.68 mm)
 Weight: 2.40 oz. (68.04 g)
 Handle: Brass

- +Ball bearing spinner in driver for smooth operation
- +Magnet in driver tip secures driver bit
- +Compact driver easily fits in your hand for precision work

HEX BIT DRIVER TOOL

Designed by Joe Wu in Mountain View, California



9912

Length: 3.51" (89.08 mm)
 Weight: 1.40 oz. (39.69 g)
 Handle: Aluminum

- +Secure storage
- +Aluminum handle is strong and lightweight
- +Holds up to 4 bits - ships with T6, T8, flat head 0.6 x 4.5, Philip PH1

POCKET DRIVER STASH TOOL

Designed by Joe Wu in Mountain View, California



9913

Length: 2.61" (66.40 mm)
 Weight: 1.00 oz. (28.35 g)
 Handle: Stainless Steel

- +Replaceable cord cutter
- +Useful pry-bar
- +Convenient bottle opener
- +1/4", 5/16", 3/8" hex wrenches
- +0-ring secured PH1 hex bit

PRY CUTTER KEYCHAIN TOOL

Designed by Joe Wu in Mountain View, California

NEW



HOIST1

- Specs: 1 Aluminum Lobed Pulley Wheel
CNC Machined Knurling on Pulley Wheel
3 POM Plastic Wheels
- Housing: Length: 7.50" (19.00 cm)
Width: 2.20" (5.60 cm)
Depth: 1.80" (4.50 cm)
- Gambrel: Length: 25.00" (19.10 cm)
Height: 6.38" (16.30 cm)
Rod Diameter: 0.39" (1.00 cm)
- Weight: Pulley & Carabiner: 1 lb 8.00 oz (680.40 g)
- Capacity: 500.00 lbs (226.80 kg)
- Includes: 2 Carabiners
40.00 ft (12.20 m) of 8 mm Rope

- +Safe Operation: Patented cam lock secures rope
- +Easy To Use: 4:1 pulley system makes lifting easier
- +Includes: Pulley, gambrel, rope

U.S. Patent No. 8,596,615

HOIST'N LOK® BIG GAME HOIST

Designed by Russ Kommer in Fargo, North Dakota



HOIST2

- Specs: 1 Aluminum Lobed Pulley Wheel
CNC Machined Knurling on Pulley Wheel
6.50 ft (1.90 m) of Heavy Duty Nylon
- Ratchet Strap, Carbon Steel
- Housing: Length: 7.50" (19.00 cm)
Width: 2.20" (5.60 cm)
Depth: 1.80" (4.50 cm)
Finish: Satin
Thickness: 0.12" (3.15 mm)
- Capacity: 100.00 lbs (45.30 kg)
- Includes: 1 Carabiner
45.00 ft (12.70 m) of 6 mm Rope

- +Safe operation: Patented cam lock secures rope
- +Includes: Pulley, extension arm, strap, ratchet, and rope

U.S. Patent No. 8,596,615

HOIST'N LOK® TREE STAND HOIST

Designed by Russ Kommer in Fargo, North Dakota



K221KKP

- Blade: Length: 3.53" (89.64 mm)
Edge: Plain
Steel: 1.4116
Finish: Stonewash
Thickness: 0.15" (3.78 mm)
- Closed: 5.19" (131.80 mm)
Open: 8.75" (222.25 mm)
- Weight: 6.20 oz. (175.77 g)
- Handle: Glass-Reinforced Nylon
- Style: Assisted Folding Knife w/Liner Lock

- +Assisted Opening flipper deploys the blade fast
- +IKBS™ ball bearing pivot deploys the blade smooth
- +High carbon stainless steel blade easy to sharpen

Available as peggable model no. K221KKPC

FORESIGHT™

Designed by Ken Onion in Kaneohe, Hawaii



K230XXP

- Blade: Length: 3.37" (85.70 mm)
Edge: Plain
Steel: D2
Finish: Satin
Thickness: 0.12" (3.15 mm)
- Closed: 4.32" (109.68 mm)
Open: 7.69" (195.28 mm)
- Weight: 3.90 oz. (110.56 g)
- Handle: Stainless Steel
- Style: Assisted Folding Knife w/Frame Lock

- +Assisted Opening flipper deploys the blade fast
- +IKBS™ ball bearing pivot deploys the blade smooth
- +D2 blade steel retains an edge

Available as peggable model no. K230XXPC

FACET™

Designed by Ken Onion in Kaneohe, Hawaii

NEW



K270GKP

Blade: Length: 3.50" (88.95 mm)
 Edge: Plain
 Steel: AUS 8
 Finish: Brush
 Thickness: 0.13" (3.38 mm)
 Closed: 4.73" (120.09 mm)
 Open: 8.25" (209.55 mm)
 Weight: 4.80 oz. (136.08 g)
 Handle: Aluminum
 Style: Field Strip Folding Knife w/Liner Lock

- +Field Strip – take apart your knife for cleaning without tools
- +High carbon stainless steel blade easy to sharpen
- +Aluminum handle is strong and lightweight

U.S. Patent Nos. 9,586,328 & 9,597,809

HOMEFRONT™

Designed by Ken Onion in Kaneohe, Hawaii



K300KXP

Blade: Length: 3.34" (84.84 mm)
 Edge: Plain
 Steel: 8Cr13MoV
 Finish: Satin
 Thickness: 0.13" (3.30 mm)
 Closed: 4.59" (116.59 mm)
 Open: 7.94" (201.68 mm)
 Weight: 4.80 oz. (136.08 g)
 Handle: Stainless Steel w/Glass-Reinforced Nylon Overlay
 Style: Folding Knife w/Frame Lock

- +IKBS™ ball bearing pivot deploys the blade smooth
- +Oversized pivot adds style accent
- +Low profile pocket clip for secure carry

Available as peggable model no. K300KXPC

HOOTENANNY™

Designed by Ken Onion in Kaneohe, Hawaii



K320GXP

Blade: Length: 3.19" (81.03 mm)
 Edge: Plain
 Steel: 8Cr13MoV
 Finish: Satin
 Thickness: 0.13" (3.30 mm)
 Closed: 4.67" (118.62 mm)
 Open: 7.88" (200.15 mm)
 Weight: 4.50 oz. (127.57 g)
 Handle: Aluminum
 Style: Folding Knife w/Liner Lock

- +IKBS™ ball bearing pivot deploys the blade smooth
- +Flipper deploys the blade fast
- +Aluminum handle is strong and lightweight

OUTRAGE™

Designed by Ken Onion in Kaneohe, Hawaii



K500GXP

Blade: Length: 3.52" (89.51 mm)
 Edge: Plain
 Steel: 8Cr13MoV
 Finish: Satin
 Thickness: 0.13" (3.25 mm)
 Closed: 4.58" (116.38 mm)
 Open: 8.13" (206.38 mm)
 Weight: 3.60 oz. (102.06 g)
 Handle: Aluminum
 Style: Folding Knife w/Liner Lock

- +IKBS™ ball bearing pivot deploys the blade smooth
- +Satin blade finish offers reduced cutting drag and improved corrosion resistance
- +Aluminum handle is strong and lightweight

Available as peggable model no. K500GXPC

HELICAL™

Designed by Ken Onion in Kaneohe, Hawaii



K540GXP

Blade: Length: 3.52" (89.28 mm)
 Edge: Plain
 Steel: D2
 Finish: Satin
 Thickness: 0.13" (3.38 mm)
 Closed: 4.66" (118.34 mm)
 Open: 8.25" (209.55 mm)
 Weight: 4.30 oz. (121.90 g)
 Handle: Aluminum
 Style: Field Strip Folding Knife w/Liner Lock

- +Field Strip – take apart your knife for cleaning without tools
- +IKBS™ ball bearing pivot deploys the blade smooth
- +Aluminum handle is strong and lightweight

U.S. Patent Nos. 10,226,871 & 10,759,067

BONA FIDE™

Designed by Ken Onion in Kaneohe, Hawaii



K542GKP

Blade: Length: 3.52" (89.28 mm)
 Edge: Plain
 Steel: 1.4116
 Finish: Corrosion Resistant Coating
 Thickness: 0.13" (3.38 mm)
 Closed: 4.66" (118.41 mm)
 Open: 8.19" (207.98 mm)
 Weight: 4.20 oz. (119.07 g)
 Handle: Aluminum
 Style: Field Strip Folding Knife w/Liner Lock

- +Field Strip – take apart your knife for cleaning without tools
- +IKBS™ ball bearing pivot deploys the blade smooth
- +Aluminum handle is strong and lightweight

U.S. Patent Nos. 10,226,871 & 10,759,067

BONA FIDE™

Designed by Ken Onion in Kaneohe, Hawaii



K800KPK

Blade: Length: 3.35" (85.12 mm)
 Edge: Combination
 Steel: 1.4116
 Finish: Stonewash
 Thickness: 0.12" (2.95 mm)
 Closed: 4.86" (123.32 mm)
 Open: 8.19" (207.98 mm)
 Weight: 3.60 oz. (102.06 g)
 Handle: Glass-Reinforced Nylon
 Style: Assisted Folding Knife w/Liner Lock

- +Assisted Opening flipper deploys the blade fast
- +IKBS™ ball bearing pivot deploys the blade smooth
- +Veff Serrations™ provide superior cutting power

SHENANIGAN™

Designed by Ken Onion in Kaneohe, Hawaii

NEW



K800RKP

Blade: Length: 3.35" (85.12 mm)
 Edge: Plain
 Steel: 1.4116
 Finish: Stonewash
 Thickness: 0.12" (2.95 mm)
 Closed: 4.86" (123.32 mm)
 Open: 8.19" (207.98 mm)
 Weight: 3.60 oz. (102.06 g)
 Handle: Glass-Reinforced Nylon
 Style: Assisted Folding Knife w/Liner Lock

- +Assisted Opening flipper deploys the blade fast
- +IKBS™ ball bearing pivot deploys the blade smooth
- +Textured handle for grip

SHENANIGAN™

Designed by Ken Onion in Kaneohe, Hawaii

NEW





K820BXP

Blade: Length: 3.18" (80.67 mm)
 Edge: Plain
 Steel: Sandvik 12C27™
 Finish: Satin
 Thickness: 0.13" (3.20 mm)
 Closed: 4.15" (105.46 mm)
 Open: 7.38" (187.33 mm)
 Weight: 2.10 oz. (59.53 g)
 Handle: Aluminum
 Style: Assisted Folding Knife w/Liner Lock

- +Assisted Opening flipper deploys the blade fast
- +IKBS™ ball bearing pivot deploys the blade smooth
- +Sandvik 12C27™ blade steel retains an edge

STYLUS™

Designed by Ken Onion in Kaneohe, Hawaii



K910KKP

Blade: Length: 12.00" (304.80 mm)
 Edge: Plain
 Steel: 65Mn Carbon Steel
 Finish: Powder Coat
 Thickness: 0.10" (2.54 mm)
 Overall: 19.50" (495.30 mm)
 Weight: 1 lb 4.00 oz (0.57 kg)
 Handle: Glass-Reinforced Nylon w/Rubber Overlay
 Style: Fixed Blade Knife w/Sheath
 Sheath: Material: Woven Nylon
 Weight: 6.10 oz. (173.00 g)

- +Black coating improves corrosion resistance
- +Textured handle for grip
- +Tough reinforced nylon sheath

CHANCEINHELL™

Designed by Ken Onion in Kaneohe, Hawaii



K920KKP

Blade: Length: 14.00" (355.60 mm)
 Edge: Plain
 Steel: 65Mn Carbon Steel
 Finish: Powder Coat
 Thickness: 0.10" (2.54 mm)
 Overall: 19.50" (495.30 mm)
 Weight: 1 lb 4.40 oz (0.57 kg)
 Handle: Glass-Reinforced Nylon w/Rubber Overlay
 Style: Fixed Blade Knife w/Sheath
 Sheath: Material: Woven Nylon
 Weight: 6.10 oz. (172.93 g)

- +Black coating improves corrosion resistance
- +Textured handle for grip
- +Tough reinforced nylon sheath

HALFCHANCE™

Designed by Ken Onion in Kaneohe, Hawaii



M16-01KS

Blade: Length: 3.06" (77.72 mm)
 Edge: Plain
 Steel: 8Cr14MoV
 Finish: EDP
 Thickness: 0.10" (2.49 mm)
 Closed: 4.00" (101.60 mm)
 Open: 7.13" (181.10 mm)
 Weight: 2.60 oz. (73.71 g)
 Handle: Stainless Steel
 Style: Folding Knife w/Frame Lock

- +Flipper deploys the blade fast
- +Durable stainless steel handle
- +Frame lock secures the blade

M16®-01KS

Designed by Kit Carson in Vine Grove, Kentucky



M16-01KZ

Blade: Length: 3.13" (79.38 mm)
Edge: Plain
Steel: 8Cr13MoV
Finish: EDP
Thickness: 0.08" (2.03 mm)
Closed: 4.00" (101.60 mm)
Open: 7.13" (180.98 mm)
Weight: 2.30 oz. (65.20 g)
Handle: Glass-Reinforced Nylon
Style: Folding Knife w/Liner Lock

- +Automated liner safety provides security
- +Flipper deploys the blade fast
- +Durable glass-reinforced nylon handle

U.S. Patent No. 7,437,822

Available as peggable model no. M16-01KZC

M16[®]-01KZ

Designed by Kit Carson in Vine Grove, Kentucky



M16-01S

Blade: Length: 3.06" (77.72 mm)
Edge: Plain
Steel: 8Cr14MoV
Finish: Bead Blast
Thickness: 0.10" (2.49 mm)
Closed: 4.00" (101.60 mm)
Open: 7.19" (182.58 mm)
Weight: 2.80 oz. (79.38 g)
Handle: Stainless Steel
Style: Folding Knife w/Frame Lock

- +Flipper deploys the blade fast
- +Durable stainless steel handle
- +Frame lock secures the blade

Available as peggable model no. M16-01SC

M16[®]-01S

Designed by Kit Carson in Vine Grove, Kentucky



M16-01Z

Blade: Length: 3.13" (79.38 mm)
Edge: Plain
Steel: 8Cr13MoV
Finish: Bead Blast
Thickness: 0.08" (2.03 mm)
Closed: 4.00" (101.60 mm)
Open: 7.13" (180.98 mm)
Weight: 2.30 oz. (65.20 g)
Handle: Glass-Reinforced Nylon
Style: Folding Knife w/Liner Lock

- +Automated liner safety provides security
- +Flipper deploys the blade fast
- +Durable glass reinforced nylon handle

U.S. Patent No. 7,437,822

M16[®]-01Z

Designed by Kit Carson in Vine Grove, Kentucky



M16-02DB

Blade: Length: 3.12" (79.15 mm)
Edge: Plain
Steel: D2
Finish: Stonewash
Thickness: 0.12" (2.95 mm)
Closed: 4.28" (108.59 mm)
Open: 7.38" (187.33 mm)
Weight: 4.00 oz. (113.40 g)
Handle: Aluminum
Style: Assisted Folding Knife w/Deadbolt[®] Lock

- +Deadbolt[®] lock is strong and simple to use
- +Assisted Opening flipper deploys the blade fast
- +IKBS[™] ball bearing pivot deploys the blade smooth

U.S. Patent No. 9,833,912

M16[®]-02DB

Designed by Kit Carson in Vine Grove, Kentucky

NEW



M16-02KS

Blade: Length: 3.06" (77.65 mm)
 Edge: Plain
 Steel: Sandvik 12C27™
 Finish: Oxide
 Thickness: 0.12" (2.97 mm)
 Closed: 4.30" (109.19 mm)
 Open: 7.31" (185.75 mm)
 Weight: 3.70 oz. (104.89 g)
 Handle: Stainless Steel
 Style: Folding Knife w/Frame Lock

- +Sandvik 12C27™ blade steel retains an edge
- +Durable stainless steel handle
- +Frame lock secures the blade

Available as peggable model no. M16-02KSC

M16®-02KS

Designed by Kit Carson in Vine Grove, Kentucky



M16-02SS

Blade: Length: 3.06" (77.83 mm)
 Edge: Plain
 Steel: Sandvik 12C27™
 Finish: Bead Blast
 Thickness: 0.12" (2.92 mm)
 Closed: 4.25" (108.00 mm)
 Open: 7.38" (187.33 mm)
 Weight: 3.60 oz. (102.06 g)
 Handle: Stainless Steel
 Style: Folding Knife w/Frame Lock

- +Sandvik 12C27™ blade steel retains an edge
- +Durable stainless steel handle
- +Frame lock secures the blade

Available as peggable model no. M16-02SSC

M16®-02SS

Designed by Kit Carson in Vine Grove, Kentucky



M16-03BK

Blade: Length: 3.55" (90.22 mm)
 Edge: Plain
 Steel: Sandvik 12C27™
 Finish: Oxide
 Thickness: 0.12" (3.00 mm)
 Closed: 4.66" (118.31 mm)
 Open: 8.25" (209.55 mm)
 Weight: 3.80 oz. (107.73 g)
 Handle: Stainless Steel
 Style: Folding Knife w/Frame Lock

- +Sandvik 12C27™ blade steel retains an edge
- +Durable stainless steel handle
- +Frame lock secures the blade

Available as peggable model no. M16-03BKC

M16®-03BK

Designed by Kit Carson in Vine Grove, Kentucky



M16-03BS

Blade: Length: 3.55" (90.22 mm)
 Edge: Plain
 Steel: Sandvik 12C27™
 Finish: Bead Blast
 Thickness: 0.12" (3.00 mm)
 Closed: 4.66" (118.31 mm)
 Open: 8.25" (209.55 mm)
 Weight: 3.80 oz. (107.73 g)
 Handle: Stainless Steel
 Style: Folding Knife w/Frame Lock

- +Sandvik 12C27™ blade steel retains an edge
- +Durable stainless steel handle
- +Frame lock secures the blade

M16®-03BS

Designed by Kit Carson in Vine Grove, Kentucky



M16-03DB

Blade: Length: 3.58" (91.03 mm)
 Edge: Plain
 Steel: D2
 Finish: Stonewash
 Thickness: 0.12" (2.97 mm)
 Closed: 4.65" (118.16 mm)
 Open: 8.25" (209.55 mm)
 Weight: 4.00 oz. (113.40 g)
 Handle: Aluminum
 Style: Assisted Folding Knife w/Deadbolt® Lock

- +Deadbolt® lock is strong and simple to use
- +Assisted Opening flipper deploys the blade fast
- +IKBS™ ball bearing pivot deploys the blade smooth

U.S. Patent No. 9,833,912

M16®-03DB

Designed by Kit Carson in Vine Grove, Kentucky



M16-03KS

Blade: Length: 3.55" (90.22 mm)
 Edge: Plain
 Steel: Sandvik 12C27™
 Finish: Oxide
 Thickness: 0.12" (3.00 mm)
 Closed: 4.66" (118.31 mm)
 Open: 8.25" (209.55 mm)
 Weight: 3.80 oz. (107.73 g)
 Handle: Stainless Steel
 Style: Folding Knife w/Frame Lock

- +Sandvik 12C27™ blade steel retains an edge
- +Durable stainless steel handle
- +Frame lock secures the blade

Available as peggable model no. M16-03KSC

M16®-03KS

Designed by Kit Carson in Vine Grove, Kentucky



M16-03S

Blade: Length: 3.46" (87.88 mm)
 Edge: Plain
 Steel: Sandvik 12C27™
 Finish: Bead Blast
 Thickness: 0.12" (3.05 mm)
 Closed: 4.65" (118.21 mm)
 Open: 8.25" (209.55 mm)
 Weight: 3.30 oz. (93.55 g)
 Handle: Aluminum
 Style: Folding Knife w/Liner Lock

- +Sandvik 12C27™ blade steel retains an edge
- +Aluminum handle is strong and lightweight
- +Locking liner safety

M16®-03S

Designed by Kit Carson in Vine Grove, Kentucky



M16-03SS

Blade: Length: 3.54" (89.92 mm)
 Edge: Plain
 Steel: Sandvik 12C27™
 Finish: Bead Blast
 Thickness: 0.12" (3.00 mm)
 Closed: 4.65" (118.21 mm)
 Open: 8.19" (207.98 mm)
 Weight: 3.60 oz. (102.06 g)
 Handle: Stainless Steel
 Style: Folding Knife w/Frame Lock

- +Sandvik 12C27™ blade steel retains an edge
- +Durable stainless steel handle
- +Frame lock secures the blade

Available as peggable model no. M16-03SSC

M16®-03SS

Designed by Kit Carson in Vine Grove, Kentucky



M16-03Z

Blade: Length: 3.50" (88.90 mm)
 Edge: Plain
 Steel: AUS 8
 Finish: Bead Blast
 Thickness: 0.12" (3.05 mm)
 Closed: 4.75" (120.65 mm)
 Open: 8.25" (209.55 mm)
 Weight: 3.50 oz. (99.22 g)
 Handle: Glass-Reinforced Nylon
 Style: Folding Knife w/Liner Lock

- +Automated liner safety provides security
- +Flipper deploys the blade fast
- +Durable glass reinforced nylon handle

U.S. Patent No. 7,437,822

M16[®]-03Z

Designed by Kit Carson in Vine Grove, Kentucky



M16-04DB

Blade: Length: 3.89" (98.86 mm)
 Edge: Plain
 Steel: D2
 Finish: Stonewash
 Thickness: 0.14" (3.48 mm)
 Closed: 5.34" (135.56 mm)
 Open: 9.31" (236.55 mm)
 Weight: 6.80 oz. (192.78 g)
 Handle: Aluminum
 Style: Assisted Folding Knife w/Deadbolt[®] Lock

- +Deadbolt[®] lock is strong and simple to use
- +Assisted Opening flipper deploys the blade fast
- +IKBS[™] ball bearing pivot deploys the blade smooth

U.S. Patent No. 9,833,912

M16[®]-04DB

Designed by Kit Carson in Vine Grove, Kentucky

NEW



M16-04KS

Blade: Length: 3.87" (98.32 mm)
 Edge: Plain
 Steel: Sandvik 12C27[™]
 Finish: Oxide
 Thickness: 0.13" (3.40 mm)
 Closed: 5.34" (135.56 mm)
 Open: 9.31" (236.55 mm)
 Weight: 6.20 oz. (175.77 g)
 Handle: Stainless Steel
 Style: Folding Knife w/Frame Lock

- +Sandvik 12C27[™] blade steel retains an edge
- +Durable stainless steel handle
- +Frame lock secures the blade

Available as peggable model no. M16-04KSC

M16[®]-04KS

Designed by Kit Carson in Vine Grove, Kentucky



M16-04SS

Blade: Length: 3.89" (98.88 mm)
 Edge: Plain
 Steel: Sandvik 12C27[™]
 Finish: Bead Blast
 Thickness: 0.13" (3.40 mm)
 Closed: 5.35" (135.99 mm)
 Open: 9.31" (236.55 mm)
 Weight: 6.10 oz. (172.93 g)
 Handle: Stainless Steel
 Style: Folding Knife w/Frame Lock

- +Sandvik 12C27[™] blade steel retains an edge
- +Durable stainless steel handle
- +Frame lock secures the blade

Available as peggable model no. M16-04SSC

M16[®]-04SS

Designed by Kit Carson in Vine Grove, Kentucky

NEW



M16-04Z

Blade: Length: 3.84" (97.56 mm)
Edge: Plain
Steel: AUS 8
Finish: Bead Blast
Thickness: 0.12" (3.05 mm)
Closed: 5.34" (135.56 mm)
Open: 9.25" (234.95 mm)
Weight: 6.30 oz. (178.60 g)
Handle: Glass-Reinforced Nylon
Style: Folding Knife w/Liner Lock

- +Automated liner safety provides security
- +Flipper deploys the blade fast
- +Durable glass-reinforced nylon handle

U.S. Patent No. 7,437,822

M16[®]-04Z

Designed by Kit Carson in Vine Grove, Kentucky



M16-10KS

Blade: Length: 3.06" (77.72 mm)
Edge: Combination
Steel: 8Cr14MoV
Finish: EDP
Thickness: 0.10" (2.49 mm)
Closed: 4.00" (101.60 mm)
Open: 7.00" (177.80 mm)
Weight: 2.60 oz. (73.71 g)
Handle: Stainless Steel
Style: Folding Knife w/Frame Lock

- +Triple Point™ Serrations easily cut rope and straps
- +Durable stainless steel handle
- +Frame lock secures the blade

Available as peggable model no. M16-10KSC

M16[®]-10KS

Designed by Kit Carson in Vine Grove, Kentucky



M16-10KSF

Blade: Length: 2.94" (74.68 mm)
Edge: Combination
Steel: 8Cr14MoV
Finish: EDP
Thickness: 0.10" (2.49 mm)
Closed: 4.00" (101.60 mm)
Open: 7.00" (177.80 mm)
Weight: 2.70 oz. (76.54 g)
Handle: Stainless Steel
Style: Folding Knife w/Frame Lock

- +Triple Point™ Serrations easily cut rope and straps
- +Durable stainless steel handle
- +Frame lock secures the blade

Available as peggable model no. M16-10KSF

M16[®]-10KSF

Designed by Kit Carson in Vine Grove, Kentucky



M16-10KZ

Blade: Length: 3.00" (76.20 mm)
Edge: Combination
Steel: 1.4116
Finish: EDP
Thickness: 0.08" (2.03 mm)
Closed: 4.00" (101.60 mm)
Open: 7.13" (180.98 mm)
Weight: 2.30 oz. (65.20 g)
Handle: Glass-Reinforced Nylon
Style: Folding Knife w/Liner Lock

- +Automated liner safety provides security
- +Triple Point™ Serrations easily cut rope and straps
- +Durable glass-reinforced nylon handle

U.S. Patent No. 7,437,822

Available as peggable model no. M16-10KZC

M16[®]-10KZ

Designed by Kit Carson in Vine Grove, Kentucky



M16-10S

Blade: Length: 3.06" (77.72 mm)
 Edge: Combination
 Steel: 8Cr14MoV
 Finish: Bead Blast
 Thickness: 0.10" (2.49 mm)
 Closed: 4.00" (101.60 mm)
 Open: 7.00" (177.80 mm)
 Weight: 2.60 oz. (73.71 g)
 Handle: Stainless Steel
 Style: Folding Knife w/Frame Lock

- +Triple Point™ Serrations easily cut rope and straps
- +Durable stainless steel handle
- +Frame lock secures the blade

M16®-10S

Designed by Kit Carson in Vine Grove, Kentucky



M16-10Z

Blade: Length: 3.00" (76.20 mm)
 Edge: Combination
 Steel: 8Cr13MoV
 Finish: Bead Blast
 Thickness: 0.08" (2.03 mm)
 Closed: 4.00" (101.60 mm)
 Open: 7.13" (180.98 mm)
 Weight: 2.30 oz. (65.20 g)
 Handle: Glass-Reinforced Nylon
 Style: Folding Knife w/Liner Lock

- +Automated liner safety provides security
- +Triple Point™ Serrations easily cut rope and straps
- +Durable glass-reinforced nylon handle

U.S. Patent No. 7,437,822

M16®-10Z

Designed by Kit Carson in Vine Grove, Kentucky



M16-12Z

Blade: Length: 3.09" (78.49 mm)
 Edge: Combination
 Steel: AUS 8
 Finish: Bead Blast
 Thickness: 0.11" (2.90 mm)
 Closed: 4.24" (107.57 mm)
 Open: 7.38" (187.33 mm)
 Weight: 3.60 oz. (102.06 g)
 Handle: Glass-Reinforced Nylon
 Style: Folding Knife w/Liner Lock

- +Automated liner safety provides security
- +Triple Point™ Serrations easily cut rope and straps
- +Durable glass-reinforced nylon handle

U.S. Patent No. 7,437,822

M16®-12Z

Designed by Kit Carson in Vine Grove, Kentucky



M16-13DSFG

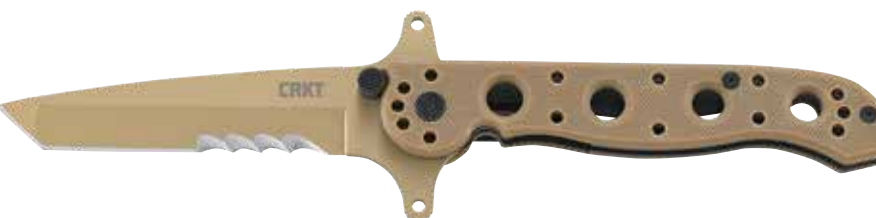
Blade: Length: 3.50" (88.90 mm)
 Edge: Combination
 Steel: 1.4116
 Finish: Titanium Nitride
 Thickness: 0.12" (3.05 mm)
 Closed: 4.75" (120.65 mm)
 Open: 8.25" (209.55 mm)
 Weight: 4.00 oz. (113.40 g)
 Handle: G10
 Style: Folding Knife w/Liner Lock

- +Automated liner safety provides security
- +Veff Serrations™ provide superior cutting power
- +G10 handle provides exceptional grip

U.S. Patent No. 7,437,822

M16®-13DSFG

Designed by Kit Carson in Vine Grove, Kentucky



M16-13FX

Blade: Length: 4.64" (117.91 mm)
Edge: Combination
Steel: SK-5
Finish: Powder Coat
Thickness: 0.15" (3.91 mm)
Overall: 9.38" (238.13 mm)
Weight: 4.60 oz. (130.41 g)
Handle: G10
Style: Fixed Blade Knife w/Sheath
Sheath: Material: Thermoplastic
Weight: 2.30 oz. (65.20 g)

- +Veff Serrations™ provide superior cutting power
- +G10 handle provides exceptional grip
- +Sheath has multiple carry options

M16®-13FX

Designed by Kit Carson in Vine Grove, Kentucky



M16-13SFG

Blade: Length: 3.50" (88.90 mm)
Edge: Combination
Steel: 1.4116
Finish: Titanium Nitride
Thickness: 0.10" (2.54 mm)
Closed: 4.75" (120.65 mm)
Open: 8.25" (209.55 mm)
Weight: 4.00 oz. (113.40 g)
Handle: G10
Style: Folding Knife w/Liner Lock

- +Automated liner safety provides security
- +Veff Serrations™ provide superior cutting power
- +G10 handle provides exceptional grip

U.S. Patent No. 7,437,822

Available as peggable model no. M16-13SFGC

M16®-13SFG

Designed by Kit Carson in Vine Grove, Kentucky



M16-13Z

Blade: Length: 3.50" (88.90 mm)
Edge: Combination
Steel: AUS 8
Finish: Bead Blast
Thickness: 0.12" (3.05 mm)
Closed: 4.75" (120.65 mm)
Open: 8.25" (209.55 mm)
Weight: 3.50 oz. (99.22 g)
Handle: Glass-Reinforced Nylon
Style: Folding Knife w/Liner Lock

- +Automated liner safety provides security
- +Triple Point™ Serrations easily cut rope and straps
- +Durable glass-reinforced nylon handle

U.S. Patent No. 7,437,822

M16®-13Z

Designed by Kit Carson in Vine Grove, Kentucky



M16-13ZLEK

Blade: Length: 3.38" (85.73 mm)
Edge: Combination
Steel: AUS 8
Finish: Titanium Nitride
Thickness: 0.12" (3.00 mm)
Closed: 4.88" (123.83 mm)
Open: 8.25" (209.55 mm)
Weight: 3.70 oz. (104.89 g)
Handle: Glass-Reinforced Nylon
Style: Folding Knife w/Liner Lock

- +Automated liner safety provides security
- +Triple Point™ Serrations easily cut rope and straps
- +Seat belt strap cutter and glass breaker for emergencies

U.S. Patent Nos. 7,437,822, 9,038,223, & D678,456

M16®-13ZLEK

Designed by Kit Carson in Vine Grove, Kentucky



M16-14D

Blade: Length: 3.99" (101.35 mm)
 Edge: Combination
 Steel: AUS 8
 Finish: Titanium Nitride
 Thickness: 0.14" (3.56 mm)
 Closed: 5.38" (136.53 mm)
 Open: 9.25" (234.95 mm)
 Weight: 5.30 oz. (150.25 g)
 Handle: Aluminum
 Style: Folding Knife w/Liner Lock

- +Automated liner safety provides security
- +Triple Point™ Serrations easily cut rope and straps
- +Aluminum handle is strong and lightweight

U.S. Patent No. 7,437,822

M16®-14D

Designed by Kit Carson in Vine Grove, Kentucky



M16-14DSFG

Blade: Length: 3.95" (100.41 mm)
 Edge: Combination
 Steel: 1.4116
 Finish: Titanium Nitride
 Thickness: 0.14" (3.58 mm)
 Closed: 5.34" (135.61 mm)
 Open: 9.31" (236.55 mm)
 Weight: 6.50 oz. (184.27 g)
 Handle: G10
 Style: Folding Knife w/Liner Lock

- +Automated liner safety provides security
- +Veff Serrations™ provide superior cutting power
- +G10 handle provides exceptional grip

U.S. Patent No. 7,437,822

M16®-14DSFG

Designed by Kit Carson in Vine Grove, Kentucky



M16-14SF

Blade: Length: 3.99" (101.35 mm)
 Edge: Combination
 Steel: AUS 8
 Finish: Titanium Nitride
 Thickness: 0.14" (3.56 mm)
 Closed: 5.38" (136.53 mm)
 Open: 9.25" (234.95 mm)
 Weight: 5.70 oz. (161.59 g)
 Handle: Aluminum
 Style: Folding Knife w/Liner Lock

- +Automated liner safety provides security
- +Triple Point™ Serrations easily cut rope and straps
- +Aluminum handle is strong and lightweight

U.S. Patent No. 7,437,822

M16®-14SF

Designed by Kit Carson in Vine Grove, Kentucky



M16-14SFG

Blade: Length: 3.95" (100.41 mm)
 Edge: Combination
 Steel: 1.4116
 Finish: Corrosion Resistant Coating
 Thickness: 0.14" (3.58 mm)
 Closed: 5.34" (135.61 mm)
 Open: 9.31" (236.55 mm)
 Weight: 6.50 oz. (184.27 g)
 Handle: G10
 Style: Folding Knife w/Liner Lock

- +Automated liner safety provides security
- +Veff Serrations™ provide superior cutting power
- +G10 handle provides exceptional grip

U.S. Patent Nos. 7,437,822

Available as peggable model no. M16-14SFGC

M16®-14SFG

Designed by Kit Carson in Vine Grove, Kentucky



M16-14Z

Blade: Length: 3.84" (97.56 mm)
Edge: Combination
Steel: AUS 8
Finish: Bead Blast
Thickness: 0.14" (3.43 mm)
Closed: 5.34" (135.56 mm)
Open: 9.25" (234.95 mm)
Weight: 6.30 oz. (178.60 g)
Handle: Glass-Reinforced Nylon
Style: Folding Knife w/Liner Lock

- +Automated liner safety provides security
- +Triple Point™ Serrations provide superior cutting power
- +Durable glass-reinforced nylon handle

U.S. Patent No. 7,437,822

M16®-14Z

Designed by Kit Carson in Vine Grove, Kentucky



M16-14ZLEK

Blade: Length: 3.75" (95.25 mm)
Edge: Combination
Steel: AUS 8
Finish: Titanium Nitride
Thickness: 0.14" (3.51 mm)
Closed: 5.50" (139.70 mm)
Open: 9.25" (234.95 mm)
Weight: 6.20 oz. (175.77 g)
Handle: Glass-Reinforced Nylon
Style: Folding Knife w/Liner Lock

- +Automated liner safety provides security
- +Triple Point™ Serrations provide superior cutting power
- +Seat belt strap cutter and glass breaker for emergencies

U.S. Patent Nos. 7,437,822, 9,038,223, & D678,456

M16®-14ZLEK

Designed by Kit Carson in Vine Grove, Kentucky



M16-14ZSF

Blade: Length: 3.99" (101.35 mm)
Edge: Combination
Steel: AUS 8
Finish: Bead Blast
Thickness: 0.14" (3.56 mm)
Closed: 5.38" (136.53 mm)
Open: 9.25" (234.95 mm)
Weight: 6.30 oz. (178.60 g)
Handle: Glass-Reinforced Nylon
Style: Folding Knife w/Liner Lock

- +Automated liner safety provides security
- +Triple Point™ Serrations provide superior cutting power
- +Durable glass-reinforced nylon handle

U.S. Patent No. 7,437,822

Available as peggable model no. M16-14ZSFC

M16®-14ZSF

Designed by Kit Carson in Vine Grove, Kentucky



M21-02G

Blade: Length: 3.11" (79.10 mm)
Edge: Plain
Steel: 1.4116
Finish: Corrosion Resistant Coating
Thickness: 0.12" (3.00 mm)
Closed: 4.24" (107.67 mm)
Open: 7.38" (187.33 mm)
Weight: 3.70 oz. (104.89 g)
Handle: G10
Style: Folding Knife w/Liner Lock

- +Automated liner safety provides security
- +Flipper deploys the blade fast
- +G10 handle provides exceptional grip

U.S. Patent No. 7,437,822

M21™-02G

Designed by Kit Carson in Vine Grove, Kentucky



M21-04G

Blade: Length: 3.98" (101.02 mm)
 Edge: Plain
 Steel: 1.4116
 Finish: Corrosion Resistant Coating
 Thickness: 0.14" (3.53 mm)
 Closed: 5.34" (135.53 mm)
 Open: 9.31" (236.55 mm)
 Weight: 6.40 oz. (181.44 g)
 Handle: G10
 Style: Folding Knife w/Liner Lock

- +Automated liner safety provides security
- +Flipper deploys the blade fast
- +G10 handle provides exceptional grip

U.S. Patent No. 7,437,822

M21™-04G

Designed by Kit Carson in Vine Grove, Kentucky



M21-10KSF

Blade: Length: 3.13" (79.60 mm)
 Edge: Combination
 Steel: 8Cr14MoV
 Finish: Oxide
 Thickness: 0.10" (2.44 mm)
 Closed: 4.01" (101.88 mm)
 Open: 7.19" (182.58 mm)
 Weight: 2.80 oz. (79.38 g)
 Handle: Stainless Steel
 Style: Folding Knife w/Frame Lock

- +Triple Point™ Serrations provide superior cutting power
- +Durable stainless steel handle
- +Frame lock secures the blade

Available as peggable model no. M21-10KSFC

M21™-10KSF

Designed by Kit Carson in Vine Grove, Kentucky



M21-12G

Blade: Length: 3.11" (79.10 mm)
 Edge: Combination
 Steel: 1.4116
 Finish: Corrosion Resistant Coating
 Thickness: 0.12" (3.00 mm)
 Closed: 4.24" (107.67 mm)
 Open: 7.38" (187.33 mm)
 Weight: 3.70 oz. (104.89 g)
 Handle: G10
 Style: Folding Knife w/Liner Lock

- +Automated liner safety provides security
- +Veff Serrations™ provide superior cutting power
- +G10 handle provides exceptional grip

U.S. Patent No. 7,437,822

M21™-12G

Designed by Kit Carson in Vine Grove, Kentucky



M21-12SFG

Blade: Length: 3.11" (79.07 mm)
 Edge: Combination
 Steel: 1.4116
 Finish: Corrosion Resistant Coating
 Thickness: 0.12" (3.00 mm)
 Closed: 4.23" (107.49 mm)
 Open: 7.38" (187.33 mm)
 Weight: 3.70 oz. (104.89 g)
 Handle: G10
 Style: Folding Knife w/Liner Lock

- +Automated liner safety provides security
- +Veff Serrations™ provide superior cutting power
- +G10 handle provides exceptional grip

U.S. Patent No. 7,437,822

M21™-12SFG

Designed by Kit Carson in Vine Grove, Kentucky



M21-14DSFG

Blade: Length: 3.98" (101.04 mm)
 Edge: Combination
 Steel: 1.4116
 Finish: Titanium Nitride
 Thickness: 0.14" (3.45 mm)
 Closed: 5.34" (135.64 mm)
 Open: 9.34" (237.34 mm)
 Weight: 6.60 oz. (187.11 g)
 Handle: G10
 Style: Folding Knife w/Liner Lock

- +Automated liner safety provides security
- +Veff Serrations™ provide superior cutting power
- +G10 handle provides exceptional grip

U.S. Patent No. 7,437,822

M21™-14DSFG

Designed by Kit Carson in Vine Grove, Kentucky



M21-14G

Blade: Length: 3.98" (101.02 mm)
 Edge: Combination
 Steel: 1.4116
 Finish: Corrosion Resistant Coating
 Thickness: 0.14" (3.53 mm)
 Closed: 5.34" (135.53 mm)
 Open: 9.31" (236.55 mm)
 Weight: 6.40 oz. (181.44 g)
 Handle: G10
 Style: Folding Knife w/Liner Lock

- +Automated liner safety provides security
- +Veff Serrations™ provide superior cutting power
- +G10 handle provides exceptional grip

U.S. Patent No. 7,437,822

M21™-14G

Designed by Kit Carson in Vine Grove, Kentucky



M21-14SF

Blade: Length: 3.99" (101.35 mm)
 Edge: Combination
 Steel: AUS 8
 Finish: Titanium Nitride
 Thickness: 0.14" (3.56 mm)
 Closed: 5.38" (136.53 mm)
 Open: 9.25" (234.95 mm)
 Weight: 5.70 oz. (161.59 g)
 Handle: Aluminum
 Style: Folding Knife w/Liner Lock

- +Automated liner safety provides security
- +Triple Point™ Serrations easily cut rope and straps
- +Aluminum handle is strong and lightweight

U.S. Patent No. 7,437,822

M21™-14SF

Designed by Kit Carson in Vine Grove, Kentucky



M21-14SFG

Blade: Length: 3.97" (100.74 mm)
 Edge: Combination
 Steel: 1.4116
 Finish: Titanium Nitride
 Thickness: 0.14" (3.45 mm)
 Closed: 5.34" (135.51 mm)
 Open: 9.31" (236.55 mm)
 Weight: 6.60 oz. (187.11 g)
 Handle: G10
 Style: Folding Knife w/Liner Lock

- +Automated liner safety provides security
- +Veff Serrations™ provide superior cutting power
- +G10 handle provides exceptional grip

U.S. Patent No. 7,437,822

M21™-14SFG

Designed by Kit Carson in Vine Grove, Kentucky



M4-02

Blade: Length: 3.25" (82.55 mm)
 Edge: Plain
 Steel: 8Cr13MoV
 Finish: Satin
 Thickness: 0.12" (3.07 mm)
 Closed: 3.75" (95.25 mm)
 Open: 7.00" (177.80 mm)
 Weight: 3.30 oz. (93.55 g)
 Handle: White Bone w/G10 Bolster
 Style: Assisted Folding Knife w/Liner Lock

- +Outburst® assisted opening deploys the blade fast
- +Liner lock for one hand closing
- +White bone handle has classic look

M4™-02

Designed by Kit Carson in Vine Grove, Kentucky



M4-02S

Blade: Length: 3.25" (82.55 mm)
 Edge: Plain
 Steel: 8Cr13MoV
 Finish: Satin
 Thickness: 0.12" (3.07 mm)
 Closed: 3.75" (95.25 mm)
 Open: 7.00" (177.80 mm)
 Weight: 4.10 oz. (116.23 g)
 Handle: Stag Bone w/Stainless Steel Bolster
 Style: Assisted Folding Knife w/Liner Lock

- +Outburst® assisted opening deploys the blade fast
- +Liner lock for one hand closing
- +Red stag handle has classic look

M4™-02S

Designed by Kit Carson in Vine Grove, Kentucky



M4-02W

Blade: Length: 3.25" (82.55 mm)
 Edge: Plain
 Steel: 8Cr13MoV
 Finish: Satin
 Thickness: 0.12" (3.07 mm)
 Closed: 3.75" (95.25 mm)
 Open: 7.00" (177.80 mm)
 Weight: 3.70 oz. (104.89 g)
 Handle: Burl Wood w/Stainless Steel Bolster
 Style: Assisted Folding Knife w/Liner Lock

- +Outburst® assisted opening deploys the blade fast
- +Liner lock for one hand closing
- +Burl wood handle has classic look

M4™-02W

Designed by Kit Carson in Vine Grove, Kentucky



M40-02

Blade: Length: 2.99" (75.84 mm)
 Edge: Plain
 Steel: 1.4116
 Finish: Bead Blast
 Thickness: 0.13" (3.38 mm)
 Closed: 3.95" (100.38 mm)
 Open: 6.94" (176.23 mm)
 Weight: 3.30 oz. (93.55 g)
 Handle: Glass-Reinforced Nylon w/Aluminum Bolster
 Style: Folding Knife w/Deadbolt® Lock

- +Deadbolt® lock is strong and simple to use
- +IKBS™ ball bearing pivot deploys the blade smooth
- +Durable glass-reinforced nylon handle

M40®-02

Designed by Kit Carson in Vine Grove, Kentucky



U.S. Patent Nos. 9,833,912 & 10,464,221

M40-03

Blade: Length: 3.46" (87.91 mm)
Edge: Plain
Steel: 1.4116
Finish: Bead Blast
Thickness: 0.13" (3.38 mm)
Closed: 4.61" (117.02 mm)
Open: 8.01" (203.35 mm)
Weight: 4.20 oz. (119.07 g)
Handle: Glass-Reinforced Nylon
w/Aluminum Bolster
Style: Folding Knife w/Deadbolt® Lock

- +Deadbolt® lock is strong and simple to use
- +IKBS™ ball bearing pivot deploys the blade smooth
- +Durable glass-reinforced nylon handle

U.S. Patent Nos. 9,833,912 & 10,464,221

M40®-03

Designed by Kit Carson in Vine Grove, Kentucky



M40-15

Blade: Length: 4.00" (101.57 mm)
Edge: Combination
Steel: 1.4116
Finish: Bead Blast
Thickness: 0.16" (4.14 mm)
Closed: 5.34" (135.69 mm)
Open: 9.38" (238.13 mm)
Weight: 6.20 oz. (175.77 g)
Handle: Glass-Reinforced Nylon
w/Aluminum Bolster
Style: Folding Knife w/Deadbolt® Lock

- +Deadbolt® lock is strong and simple to use
- +IKBS™ ball bearing pivot deploys the blade smooth
- +Veff Serrations™ provide superior cutting power

U.S. Patent Nos. 9,833,912 & 10,464,221

M40®-15

Designed by Kit Carson in Vine Grove, Kentucky



TPENBOND

Overall: 5.06" (128.60 mm)
Weight: 1.00 oz. (28.35 g)
Finish: Anodized
Handle: Aluminum
Refill: SCHMIDT® MegaLine 4889M

- +Special ink writes anywhere
- +Magnet to attach to surfaces
- +Aluminum is strong and lightweight

SCHMIDT® is a registered trademark of SCHMIDT Technology
U.S. Patent No. D765,783

TECHLINER™

Designed by Mike Bond in Pearl City, Hawaii



TPENBOND2

Overall: 4.22" (107.21 mm)
Weight: 0.80 oz. (22.68 g)
Finish: Anodized
Handle: Aluminum
Refill: SCHMIDT® MegaLine 4889M

- +Special ink writes anywhere
- +Magnet to attach to surfaces
- +Aluminum is strong and lightweight

SCHMIDT® is a registered trademark of SCHMIDT Technology

TECHLINER™ SUPER SHORTY

Designed by Mike Bond in Pearl City, Hawaii



TPENWK

Overall: 6.00" (152.27 mm)
Weight: 1.30 oz. (36.85 g)
Finish: Anodized
Handle: Aluminum
Refill: SCHMIDT® MegaLine 4889M

- +Special ink writes anywhere
- +Aluminum is strong and lightweight
- +Discreet low profile writing pen

SCHMIDT® is a registered trademark of SCHMIDT Technology

WILLIAMS DEFENSE PEN

Designed by James Williams in Vass, North Carolina



TPENWOD

Overall: 6.00" (152.27 mm)
Weight: 1.30 oz. (36.85 g)
Finish: Anodized
Handle: Aluminum
Refill: SCHMIDT® MegaLine 4889M

- +Special ink writes anywhere
- +Aluminum is strong and lightweight
- +Discreet low profile writing pen

SCHMIDT® is a registered trademark of SCHMIDT Technology

WILLIAMS DEFENSE PEN

Designed by James Williams in Vass, North Carolina



TPENWP

Overall: 5.94" (150.83 mm)
Weight: 1.40 oz. (39.69 g)
Finish: Anodized
Handle: Aluminum
Refill: SCHMIDT® MegaLine 4889M

- +Special ink writes anywhere
- +Aluminum is strong and lightweight
- +Discreet low profile writing pen

SCHMIDT® is a registered trademark of SCHMIDT Technology

WILLIAMS DEFENSE PEN II

Designed by James Williams in Vass, North Carolina



1032 NATHAN'S KNIFE KIT	16
1050K FIRE SPARK™	16
1100 MOXIE™	16
1105K ENDORSER™	16
2020 STING™	17
2055 K.E.R.T.™ (KEYRING. EMERGENCY. RESCUE. TOOL.).....	17
2075 SHRILL™	17
2082 SIWI™	17
2083 RAMADI™	18
2085 XAN™	18
2265 XOLOTL™	18
2290 NISHI™	18
2367 OBAKE™	19
2372 FAWKES.....	19
2379 MINIMALIST® PERSIAN	19
2382 BIWA™	19
2383 MINIMALIST® CLEAVER	20
2383K MINIMALIST® CLEAVER BLACKOUT.....	20
2384K MINIMALIST® DROP POINT.....	20
2385 MINIMALIST® WHARNCLIFFE.....	20
2386 MINIMALIST® TANTO.....	21
2387 MINIMALIST® BOWIE.....	21
2387G MINIMALIST® BOWIE	21
2387O MINIMALIST® BOWIE CTHULHU	21
2388 S.P.E.W.™ (SMALL. POCKET. EVERYDAY. WHARNCLIFFE.).....	22
2389 KERAMIN™	22
2392 DEVIATION™	22
2394 MINIMALIST® KATANA.....	22
2398 S.P.E.C.™ (SMALL. POCKET. EVERYDAY. CLEAVER.).....	23
2415 TAILBONE™	23
2425 SCRIBE™	23
2440 HERON™	23
2490 SQUID™	24
2490KS SQUID™	24
2491 SQUID™ STAINLESS STEEL HANDLE.....	24
2492 SQUID™ ASSISTED.....	24
2493 SQUID™ ASSISTED BLACK.....	25
2495K SQUID™ XM.....	25
2510 BEAR CLAW™	25
2510ER BEAR CLAW™	25
2520 TUNA™	26
2550 SKETCH™	26
2630 DU HOC™	26
2640 CLEVER GIRL™ FOLDER.....	26
2709 CLEVER GIRL™	27
2710 CLEVER GIRL™ KUKRI	27
2724 CHOGAN™ HAMMER	27
2725 KANGEE™ T-HAWK	27
2726 JENNY WREN™ COMPACT	28
2727 CHOGAN™ HATCHET	28
2730 WOODS CHOGAN™ T-HAWK.....	28
2732 WOODS NOBO™ T-HAWK.....	28
2735 WOODS KANGEE™ T-HAWK.....	29
2736 BERSERKER™	29
2742 KUK™	29
2746 FREYR™	29
2749 FREYA™	30
2795 GULF™	30
2861 HUNT'N FISCH™	30
2866 CATCHALL™	30
2867 CURFEW™	31
2903 HISSATSU™	31
2906 OTANASHI NOH KEN™	31
2907K HISSATSU™ FIXED BLADE BLACK	31
2908 INAZUMA NO KEN™	32

2909 SDN™	32
2927 HZ6.....	32
3801 LCK +.....	32
3802K LCK + TANTO BLACKOUT	33
3810 LCK + LARGE	33
4021 RAZELCLIFFE™ COMPACT.....	33
4031 RAZEL™ GT.....	33
4040 PROVOKE®	34
4040V PROVOKE® WITH VEFF SERRATIONS™	34
4041B PROVOKE® BLUE.....	34
4041G PROVOKE® ZAP	34
4041O PROVOKE® ORANGE.....	35
4041R PROVOKE® RED	35
4042 PROVOKE® FIRST RESPONDER	35
4045 PROVOKE® COMPACT.....	35
4123K BURNOUT™	36
4620 AVANT™	36
4635 BEV-EDGE™	36
5102N SNAP LOCK™	36
5220 BT FIGHTER™ COMPACT	37
5225 BT FIGHTER™	37
5240 NIRK™ TIGHE 2	37
5241 NIRK™ TIGHE GREEN.....	37
5311 PILAR®	38
5311CU PILAR®	38
5315 PILAR® LARGE	38
5315G PILAR® LARGE.....	38
5317 PILAR® III.....	39
5317D2 PILAR® III BLACK W/D2 BLADE STEEL.....	39
5325 TUETO™	39
5375 TRASK™	39
5385 DELINEATION™	40
5390 PIET™	40
5401 SEISMIC™	40
5405 LINCHPIN™	40
5406K LINCHPIN™	41
5460 FOSSIL™ COMPACT	41
5470 FOSSIL™	41
5500 K.I.S.S.®	41
5510 K.I.S.S.®	42
5520 DELILAH'S P.E.C.K.™	42
5820 AVANT™-TAC.....	42
6130 JETTISON™	42
6215 CALIGO™	43
6235 PARASCALE™	43
6280 OVERLAND™	43
6290 THERO™	43
6321 COTTIDAE™	44
6433 KITH	44
6434 KOVA™	44
6450K DRIFTER.....	44
6450S DRIFTER.....	45
6470 PAZODA™ 2.....	45
6480 PAZODA™	45
6525 LANNY.....	45
6535 MAH-HAWK™	46
6540 CHEHALEM™	46
6850 IGNITOR®	46
6855 IGNITOR®	46
6860 IGNITOR® T.....	47
6865 IGNITOR® T.....	47
6925 TRIPLE PLAY™	47
7016 FLAT OUT™	47
7031 FULL THROTTLE™	48
7050 SEPTIMO™	48

7051 SEPTIMO™ MULTI-TOOL	48
7076 UP & AT 'EM™	48
7086 DUALLY™	49
7091 CINCO™	49
7095 CEO COMPACT	49
7096 CEO	49
7096YGK CEO BAMBOO	50
7097 CEO FLIPPER	50
7097K CEO	50
7100 VENANDI™	50
7115 MONTOSA™	51
7123 SEIS™	51
7140 INARA™	51
7150 IBI™	51
7160 INTENTION	52
7190 SYMMETRY™	52
7270 RIPSNOT™	52
7271 RIPSNOT™ II	52
7471 RITUAL™	53
7524 FEISTY™	53
7530 CROSSBONES	53
7532 JUMBONES	53
7920 P.S.D.™ (PARTICLE. SEPARATION. DEVICE.)	54
7920K P.S.D.™ (PARTICLE. SEPARATION. DEVICE.)	54
9011 PRYMA™	54
9031 EXITOOL® COMPACT	54
9082 COMPANO™	55
9096 CRKT™ MICRO TOOL & KEYCHAIN SHARPENER™	55
9100C EAT'N TOOL®	55
9100KC EAT'N TOOL®	55
9110C EAT'N TOOL® XL	56
9704 KNIFE MAINTENANCE TOOL	56
9705 WILLIAMS DEFENSE KEY	56
9910 6 BIT DRIVER TOOL	56
9911 HEX BIT DRIVER TOOL ROLL	57
9911-2 HEX BIT DRIVER TOOL	57
9912 POCKET DRIVER STASH TOOL	57
9913 PRY CUTTER KEYCHAIN TOOL	57
HOIST1 HOIST'N LOK™ BIG GAME HOIST	58
HOIST2 HOIST'N LOK™ TREE STAND HOIST	58
K221KKP FORESIGHT™ ASSISTED	58
K230XXP FACET™	58
K270GKP HOMEFRONT™	59
K300KXP HOOTENANNY™	59
K320GXP OUTRAGE™	59
K500GXP HELICAL™	59
K540GXP BONA FIDE™ SILVER	60
K542GKP BONA FIDE™ OD GREEN	60
K800KKP SHENANIGAN™ BLACK WITH VEFF SERRATIONS™	60
K800RKP SHENANIGAN™ MAROON	60
K820BXP STYLUS™	61
K910KKP CHANCEINHELL™	61
K920KKP HALFACHANCE™	61
M16-01KS M16®-01KS	61
M16-01KZ M16® - 01KZ	62
M16-01S M16® - 01S	62
M16-01Z M16® - 01Z	62
M16-02DB M16®-02DB	62
M16-02KS M16® -02KS	63
M16-02SS M16®-02SS	63
M16-03BK M16® - 03BK BRONZE W/BLACK BLADE	63
M16-03BS M16® - 03BS BRONZE W/SILVER BLADE	63
M16-03DB M16®-03DB	64
M16-03KS M16® -03KS	64
M16-03S M16® - 03S	64

M16-03SS M16®-03SS	64
M16-03Z M16® - 03Z	65
M16-04DB M16®-04DB	65
M16-04KS M16®-04KS	65
M16-04SS M16®-04SS	65
M16-04Z M16® - 04Z	66
M16-10KS M16® - 10KS	66
M16-10KSF M16® - 10KSF	66
M16-10KZ M16® - 10KZ	66
M16-10S M16® - 10S	67
M16-10Z M16® - 10Z	67
M16-12Z M16® - 12Z	67
M16-13DSFG M16® - 13DSFG	67
M16-13FX M16® - 13FX	68
M16-13SFG M16® - 13SFG	68
M16-13Z M16® - 13Z	68
M16-13ZLEK M16® - 13ZLEK	68
M16-14D M16® - 14D	69
M16-14DSFG M16® - 14DSFG	69
M16-14SF M16® - 14SF	69
M16-14SFG M16® - 14SFG	69
M16-14Z M16® - 14Z	70
M16-14ZLEK M16® - 14ZLEK	70
M16-14ZSF M16® - 14ZSF	70
M21-02G M21™ - 02G	70
M21-04G M21™ - 04G	71
M21-10KSF M21™ - 10KSF	71
M21-12G M21™ - 12G	71
M21-12SFG M21™ - 12SFG	71
M21-14DSFG M21™ - 14DSFG	72
M21-14G M21™ - 14G	72
M21-14SF M21™ - 14SF	72
M21-14SFG M21™ - 14SFG	72
M4-02 M4™ - 02	73
M4-02S M4™ - 02S	73
M4-02W M4™ - 02W	73
M40-02 M40® - 02	73
M40-03 M40® - 03	74
M40-15 M40® - 15	74
TPENBOND TECHLINER™ PEN	74
TPENBOND2 TECHLINER™ SUPER SHORTY PEN	74
TPENWK WILLIAMS DEFENSE PEN	75
TPENWOD WILLIAMS DEFENSE PEN OD GREEN	75
TPENWP WILLIAMS DEFENSE PEN II	75

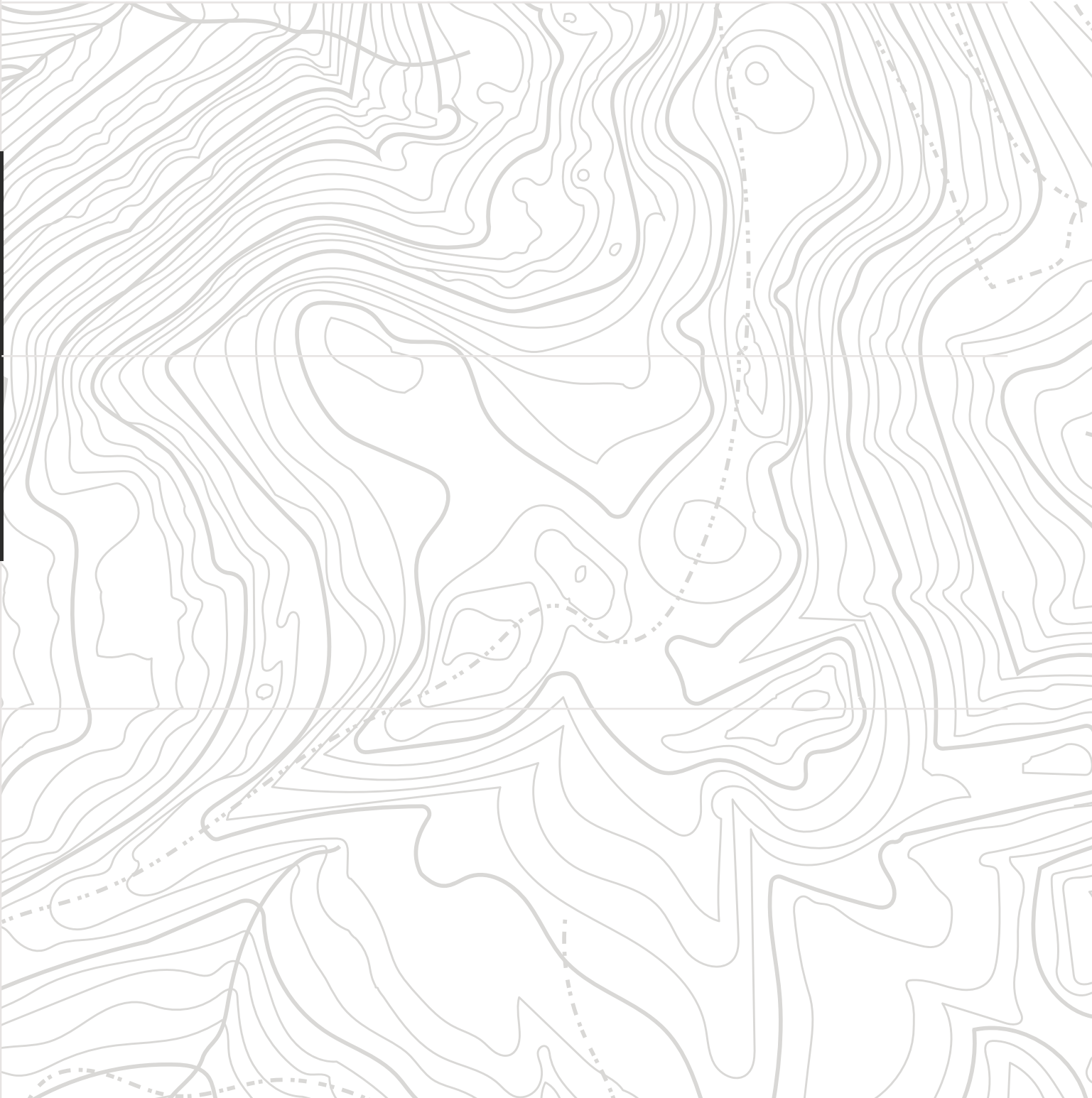
A.G. RUSSELL	17
2020 STING™.....	17
ALAN FOLTS	19
2372 FAWKES.....	19
2379 MINIMALIST® PERSIAN.....	19
2382 BIWA™.....	19
2383 MINIMALIST® CLEAVER.....	20
2383K MINIMALIST® CLEAVER BLACKOUT.....	20
2384K MINIMALIST® DROP POINT.....	20
2385 MINIMALIST® WHARNCLIFFE.....	20
2386 MINIMALIST® TANTO.....	21
2387 MINIMALIST® BOWIE.....	21
2387G MINIMALIST® BOWIE.....	21
23870 MINIMALIST® BOWIE CTHULHU.....	21
2388 S.P.E.W.™ (SMALL. POCKET. EVERYDAY. WHARNCLIFFE.).....	22
2389 KERAMIN™.....	22
2394 MINIMALIST® KATANA.....	22
2398 S.P.E.C.™ (SMALL. POCKET. EVERYDAY. CLEAVER.).....	23
7471 RITUAL™.....	53
AUSTIN MCGLAUN	26
22630 DU HOC™.....	26
2640 CLEVER GIRL™ FOLDER.....	26
2709 CLEVER GIRL™.....	27
2710 CLEVER GIRL™ KUKRI.....	27
BRIAN TIGHE	37
5220 BT FIGHTER™ COMPACT.....	37
5225 BT FIGHTER™.....	37
5240 NIRK™ TIGHE 2.....	37
5241 NIRK™ TIGHE GREEN.....	37
DARRIN WILLIAM SIROIS	17
2082 SIWI™.....	17
2083 RAMADI™.....	18
2085 XAN™.....	18
ED HALLIGAN	41
5500 K.I.S.S.®.....	41
5510 K.I.S.S.®.....	42
5520 DELILAH'S P.E.C.K.™.....	42
ED VAN HOY	36
5102N SNAP LOCK™.....	36
ELMER ROUSH	29
2746 FREYR™.....	29
2749 FREYA™.....	30
ERIC OCHS	36
4620 AVANT™.....	36
4635 BEV-EDGE™.....	36
5375 TRASK™.....	39
5385 DELINEATION™.....	40
5820 AVANT™-TAC.....	42
6540 CHEHALEM™.....	46
7160 INTENTION.....	52
FLAVIO IKOMA	40
5401 SEISMIC™.....	40
5405 LINCHPIN™.....	40
5406K LINCHPIN™.....	41
5460 FOSSIL™ COMPACT.....	41
5470 FOSSIL™.....	41
GLENN KLECKER	16
1032 NATHAN'S KNIFE KIT.....	16
JAMES WILLIAMS	31
2903 HISSATSU™.....	31
2906 OTANASHI NOH KEN™.....	31
2907K HISSATSU™ FIXED BLADE BLACK.....	31
2908 INAZUMA NO KEN™.....	32
2909 SDN™.....	32
2927 HZ6.....	32
9705 WILLIAMS DEFENSE KEY.....	56
TPENWK WILLIAMS DEFENSE PEN.....	75

TPENWOD WILLIAMS DEFENSE PEN OD GREEN.....	75
TPENWP WILLIAMS DEFENSE PEN II.....	75
JEFF PARK	53
7524 FEISTY™.....	53
7530 CROSSBONES.....	53
7532 JUMBONES.....	53
JEREMY VALDEZ	48
7050 SEPTIMO™.....	48
7051 SEPTIMO™ MULTI-TOOL.....	48
JESPER VOXNAES	38
5311 PILAR®.....	38
5311CU PILAR®.....	38
5315 PILAR® LARGE.....	38
5315G PILAR® LARGE.....	38
5317 PILAR® III.....	39
5317D2 PILAR® III BLACK W/D2 BLADE STEEL.....	39
5325 TUETO™.....	39
5390 PIET™.....	40
6321 COTTIDAE™.....	44
7150 IBI™.....	51
9011 PRYMA™.....	54
JIM HAMMOND	54
7920 P.S.D.™ (PARTICLE. SEPARATION. DEVICE.).....	54
7920K P.S.D.™ (PARTICLE. SEPARATION. DEVICE.).....	54
JOE CASWELL	34
4040 PROVOKE®.....	34
4040V PROVOKE® WITH VEFF SERRATIONS™.....	34
4041B PROVOKE® BLUE.....	34
4041G PROVOKE® ZAP.....	34
4041O PROVOKE® ORANGE.....	35
4041R PROVOKE® RED.....	35
4042 PROVOKE® FIRST RESPONDER.....	35
4045 PROVOKE® COMPACT.....	35
JOE WU	56
9910 6 BIT DRIVER TOOL.....	56
9911 HEX BIT DRIVER TOOL ROLL.....	57
9911-2 HEX BIT DRIVER TOOL.....	57
9912 POCKET DRIVER STASH TOOL.....	57
9913 PRY CUTTER KEYCHAIN TOOL.....	57
JON GRAHAM	33
4021 RAZELCLIFFE™ COMPACT.....	33
4031 RAZEL™ GT.....	33
KEN ONION	58
K221KKP FORESIGHT™ ASSISTED.....	58
K230XXP FACET™.....	58
K270GKP HOMEFRONT™.....	59
K300KXP HOOTENANNY™.....	59
K320GXP OUTRAGE™.....	59
K500GXP HELICAL™.....	59
K540GXP BONA FIDE™ SILVER.....	60
K542GKP BONA FIDE™ OD GREEN.....	60
K800KKP SHENANIGAN™ BLACK WITH VEFF SERRATIONS™.....	60
K800RKP SHENANIGAN™ MAROON.....	60
K820BXP STYLUS™.....	61
K910KKP CHANCEINHELL™.....	61
K920KKP HALFCHANCE™.....	61
KEN STEIGERWALT	44
6433 KITH.....	44
6434 KOVA™.....	44
6850 IGNITOR®.....	46
6855 IGNITOR®.....	46
6860 IGNITOR® T.....	47
6865 IGNITOR® T.....	47
KIT CARSON	61
M16-01KS M16®-01KS.....	61
M16-01KZ M16® - 01KZ.....	62
M16-01S M16® - 01S.....	62

M16-01Z M16° - 01Z.....	62
M16-02DB M16° -02DB.....	62
M16-02KS M16° -02KS.....	63
M16-02SS M16° -02SS.....	63
M16-03BK M16° - 03BK BRONZE W/BLACK BLADE.....	63
M16-03BS M16° - 03BS BRONZE W/SILVER BLADE.....	63
M16-03DB M16° -03DB.....	64
M16-03KS M16° -03KS.....	64
M16-03S M16° - 03S.....	64
M16-03SS M16° -03SS.....	64
M16-03Z M16° - 03Z.....	65
M16-04DB M16° -04DB.....	65
M16-04KS M16° -04KS.....	65
M16-04SS M16° -04SS.....	65
M16-04Z M16° - 04Z.....	66
M16-10KS M16° - 10KS.....	66
M16-10KSF M16° - 10KSF.....	66
M16-10KZ M16° - 10KZ.....	66
M16-10S M16° - 10S.....	67
M16-10Z M16° - 10Z.....	67
M16-12Z M16° - 12Z.....	67
M16-13DSFG M16° - 13DSFG.....	67
M16-13FX M16° - 13FX.....	68
M16-13SFG M16° - 13SFG.....	68
M16-13Z M16° - 13Z.....	68
M16-13ZLEK M16° - 13ZLEK.....	68
M16-14D M16° - 14D.....	69
M16-14DSFG M16° - 14DSFG.....	69
M16-14SF M16° - 14SF.....	69
M16-14SFG M16° - 14SFG.....	69
M16-14Z M16° - 14Z.....	70
M16-14ZLEK M16° - 14ZLEK.....	70
M16-14ZSF M16° - 14ZSF.....	70
M21-02G M21™ - 02G.....	70
M21-04G M21™ - 04G.....	71
M21-10KSF M21™ - 10KSF.....	71
M21-12G M21™ - 12G.....	71
M21-12SFG M21™ - 12SFG.....	71
M21-14DSFG M21™ - 14DSFG.....	72
M21-14G M21™ - 14G.....	72
M21-14SF M21™ - 14SF.....	72
M21-14SFG M21™ - 14SFG.....	72
M4-02 M4™ - 02.....	73
M4-02S M4™ - 02S.....	73
M4-02W M4™ - 02W.....	73
M40-02 M40° - 02.....	73
M40-03 M40° - 03.....	74
M40-15 M40° - 15.....	74
LARRY FISCHER	30
2861 HUNT'N FISCH™.....	30
LIONG MAH	45
6525 LANNY.....	45
6535 MAH-HAWK™.....	46
9100C EAT'N TOOL®.....	55
9100KC EAT'N TOOL®.....	55
9110C EAT'N TOOL® XL.....	56
LUCAS BURNLEY	18
2290 NISHI™.....	18
2367 OBAKE™.....	19
2440 HERON™.....	23
2490 SQUID™.....	24
2490KS SQUID™.....	24
2491 SQUID™ STAINLESS STEEL HANDLE.....	24
2492 SQUID™ ASSISTED.....	24
2493 SQUID™ ASSISTED BLACK.....	25
2495K SQUID™ XM.....	25
2520 TUNA™.....	26

2550 SKETCH™.....	26
MATTHEW LERCH	16
1050K FIRE SPARK™.....	16
1100 MOXIE™.....	16
1105K ENDORSER™.....	16
2075 SHRILL™.....	17
3801 LCK +.....	32
3802K LCK + TANTO BLACKOUT.....	33
3810 LCK + LARGE.....	33
7016 FLAT OUT™.....	47
7031 FULL THROTTLE™.....	48
7076 UP & AT 'EM™.....	48
MICHAEL RODRIGUEZ	18
2265 XOLOTL™.....	18
MIKE BOND	55
9082 COMPANO™.....	55
TPENBOND TECHLINER™ PEN.....	74
TPENBOND2 TECHLINER™ SUPER SHORTY PEN.....	74
MJ LERCH	36
4123K BURNOUT™.....	36
PHILIP BOOTH	47
6925 TRIPLE PLAY™.....	47
7270 RIPSNOT™.....	52
7271 RIPSNOT™ II.....	52
RAY KIRK	17
2055 K.E.R.T.™ (KEYRING. EMERGENCY. RESCUE. TOOL.).....	17
RICHARD ROGERS	49
7086 DUALLY™.....	49
7091 CINCO™.....	49
7095 CEO COMPACT.....	49
7096 CEO.....	49
7096YGK CEO BAMBOO.....	50
7097 CEO FLIPPER.....	50
7097K CEO.....	50
7100 VENANDI™.....	50
7115 MONTOSA™.....	51
7123 SEIS™.....	51
7140 INARA™.....	51
7190 SYMMETRY™.....	52
ROBERT CARTER	42
6130 JETTISON™.....	42
RUSS KOMMER	25
2510 BEAR CLAW™.....	25
2510ER BEAR CLAW™.....	25
2866 CATCHALL™.....	30
2867 CURFEW™.....	31
9031 EXITOOL® COMPACT.....	54
HOIST1 HOIST'N LOK™ BIG GAME HOIST.....	58
HOIST2 HOIST'N LOK™ TREE STAND HOIST.....	58
RYAN JOHNSON OF RMJ TACTICAL	27
2724 CHOGAN™ HAMMER.....	27
2725 KANGEE™ T-HAWK.....	27
2726 JENNY WREN™ COMPACT.....	28
2727 CHOGAN™ HATCHET.....	28
2730 WOODS CHOGAN™ T-HAWK.....	28
2732 WOODS NOBO™ T-HAWK.....	28
2735 WOODS KANGEE™ T-HAWK.....	29
2736 BERSERKER™.....	29
2742 KUK™.....	29
2795 GULF™.....	30
T.J. SCHWARZ	23
2415 TAILBONE™.....	23
2425 SCRIBE™.....	23
6215 CALIGO™.....	43
6235 PARASCALE™.....	43
6280 OVERLAND™.....	43
6290 THERO™.....	43

TERRY RENNER	22
2392 DEVIATION™.....	22
TOM STOKES	55
9096 CRKT® MICRO TOOL & KEYCHAIN SHARPENER™.....	55
9704 KNIFE MAINTENANCE TOOL.....	56



LIFETIME WARRANTY

This warranty covers any defects in materials or workmanship. If one of our knives ever breaks or fails because of material or manufacturing defect, we'll repair or replace the knife.

This warranty runs as long as you own your knife. Coverage ends if you sell or otherwise transfer the knife to someone else, or if your CRKT® knife is modified in any way.

This warranty does not cover breakage or failure due to misuse of the knife. Knives as good as ours rarely break or fail because of a defect. Usually they break or fail from what we call "tool abuse"—using them for unsuitable tasks like prying or pounding. Therefore, blade tip breakage is not covered by our warranty. Use of a knife for any purpose other than cutting voids the warranty. So please match the tool to the task, and use your knife only for cutting. The knife will last longer, and you'll be safer too. This warranty does not cover failure of mechanisms due to your failure to properly maintain them.

Misuse of your knife can cause serious injury or even death. It can also cause your knife to break or fail and the warranty will not apply. Failure to properly maintain your knife also may cause its mechanisms not to function properly, which could result in injury to you or damage to the knife. Follow the do's and don'ts which are included in your CRKT® knife package and the knife will last longer and you'll be safer too.

Finally, consequential and incidental damages are not recoverable under this warranty. Some states do not allow the exclusion or limitation of consequential damages, so this exclusion or limitation may not apply to you. This warranty gives you specific legal rights, and you may also have other rights which vary from State to State.

Limited Accessory Warranty

CRKT® accessories, including deployment systems, carry systems, and sharpeners, have a one-year limited warranty against defects in material or manufacturing.

Limited Electronics Warranty

The electronic portion of CRKT® products, including LED systems, are covered by a 90-day limited warranty from the date of purchase to the original purchaser. Warranty claims must be accompanied by proof of purchase.

SPECIFICATIONS

Colors and textures in all product images are as close as reproduction processes permit. Variations may occur in finishing processes such as anodizing and titanium nitride coating, G10, and in other natural materials such as leather, bone, and wood.

We recommend you visit your local retailer and/or reference online videos and multiple product images and angles to view CRKT® products under the best possible lighting conditions to ensure complete satisfaction. Blade lengths in this catalog are measured according to the American Knife and Tool Institute Guidelines. Specifications on products are subject to change without notice and can also be viewed on CRKT.com.

The Columbia River Knife & Tool name, Columbia River Knife & Tool logo, CRKT name, CRKT logo, Confidence in Hand, CRKT Confidence in Hand logo, Deadbolt, Kinematic, IKBS, OutBurst, Fire Safe, ExiTool, Fire Spark, Eat'N Tool, Ignitor, Minimalist, Pazoda, For Those Who Serve, When Seconds Matter, Sting, K.I.S.S., M4, M16, M21, Bear Claw, Triple-Point Serrations, Veff Serrations, Veff Flat Top Serrations, Hissatsu, Heiho, Clark Fork, My Tighe, NIRK Tighe, S.P.E.W., Eros, Swindle, Endorser, K.E.R.T., Otanashi Noh Ken, Chogan, Kangee, Foresight, Moxie, Obake, Keramin, Fossil, Spark'N Sharp, ChanceinHell, Halfachance, Hootenanny, Squid, Deviation, Hoist'N Lok, Hunt'N Fisch, Mah-Chete, Thunder Strike, ShriLL, Clever Girl, Birler, Tighe Tac, Jettison, Fulcrum, Outrage, Homefront, Jettison, Nobo, Snap Lock, Bombastic, Pilar, Cuatro, Caligo, Radic, KUK, Rasp, SiWi, Freyr, Pryma, Ripsnort, Daktyl, Sketch, Septimo, Slacker, Helical, Seismic, Fast Lane, Flat Out, Up & At 'Em, Bev-Edge, Du Hoc, Provoke, Cimbri, Apoc, Avant, BT Fighter, Burnout, Chehalem, Full Throttle, Gulf, Inara, Jenny Wren, Linchpin, M40, Montosa, Nishi, Overland, Owlet, Parascale, Piet, Sketch, Thero, Tuna, Utsidih, XAN, Xolotl, Biwa, Tailbone, Scribe, Heron, Berserker, Freya, Razelcliffe, Razel, Tueto, Trask, Cottidae, Dually, Cinco, Ibi, Intention, Symmetry, Ritual, P.S.D., Compano, Bona Fide, Techliner, Catchall, Curfew, Delineation, Facet, Feisty, Inazuma No Ken, Kova, Mah-Hawk, Ramadi, SDN, Seis, S.P.E.C., Stylus, Shenanigan, Triple Play, Venandi are trademarks of Columbia River Knife & Tool or their licensees. Boltaron® is a registered trademark of the SIMONA AMERICA Group. B.V. Grivory® is a registered trademark of EMS-CHEMIE AG. SCHMIDT® is a registered trademark of SCHMIDT Technology. Principal Product Photography: Pedersen Studios, Cathedral Park Place, Portland, OR. Selected Lifestyle Photography: Blue Collar Agency, Creative Director Tom Lehmann. Printed on recycled paper. Copyright 2022 CRKT®, Columbia River Knife & Tool®. All Rights Reserved.

Columbia River Knife & Tool

18348 SW 126TH PLACE | TUALATIN, OR 97062 USA
TEL: 503.685.5015 | 800.891.3100 | FAX: 503.682.9680
CRKT.com



CRKT IS A PROUD MEMBER OF THE **AMERICAN KNIFE & TOOL INSTITUTE**.
KEEPING KNIVES IN AMERICAN LIVES SINCE 1998.

22 VISTA VIEW LN, CODY, WY 82414 | AKTI.ORG