

2018



**COWBOY COLLECTIBLES**  
**AUTHENTIC HORSE HAIR**



877-920-9961  
Fax:866-920-9080  
[www.cowboy-gifts.com](http://www.cowboy-gifts.com)  
[sales@cowboy-gifts.com](mailto:sales@cowboy-gifts.com)



**Brenda Siegfried-Sales  
Manager  
406-860-0651**



**Ashley Thompson-Sales  
406-471-6060**



**Meghan Richardson-Sales  
406-321-3476**

**\$200 opening order with no reorder dollar  
minimums.**

**All items sold individually unless otherwise  
specified.**

**Free displays available with qualified  
product purchase.**

**Contact us via phone, fax, email, or place  
your order online at [cowboy-gift.com](http://cowboy-gift.com).**



**Indicates a top seller**



**New item for 2018**



**Connect with us on Facebook and  
Instagram**



**COWBOY COLLECTIBLES**  
AUTHENTIC HORSE HAIR

We at Cowboy Collectibles are pleased to offer our superb selection of authentic horse hair products. Made in Montana, each piece is individually handcrafted from natural horse hair. By hand-braiding instead of "hitching" our merchandise, we have developed a line of products unique within our industry.

Products are sold individually, in pairs, or in increments of six and an assortment of the available horse hair colors are included in each shipment. Starter packages are available that include our highly acclaimed horseshoe display racks. Please see our order form for further details.

Cowboy Collectibles is committed to supporting Montana families and their rural way of life. We look forward to adding you to our list of satisfied retailers.



Made in Montana  
USA





The following pages contain our best selling items for over 20 years! These bracelets are embellished with a variety of beads, conchos, and stones. Available in two styles-adjustable or a lobster claw clasp closure.

**Adjustable** bracelets are made with round leather that slides through two rubber stoppers allowing the bracelet to vary in size.

**Sized** bracelets feature a lobster claw closure. Available sizes: Small (6.5 inches), Medium (7.25 inches), and Large (8 inches) sizes. Both styles are shipped in increments of six. Colors may vary from those shown.



**BRB/BRB-A** Top Seller!



**BRC/BRC-A** Top Seller!



**BRE/BRE-A**



**BRQ/BRQ-A**







**BRF/BRF-A**



**BRG/BRG-A**



**BRPL/BRPL-A**



Model is wearing: BRB Beaded Bracelet, BRC-A Adjustable Concho Bracelet, BRG-A Adjustable Gemstone Bracelet, BLE Tooled Leather Bracelet (pg. 44), WBA-A Wrap Bracelet Aqua (pg. 34).





BR6C1/BR6C1-A

Model is wearing: BRS-A Adjustable Single Stand, BRW-A Adjustable Plain, BRD-A Adjustable Double Bracelets.



BR6C2/BR6C2-A





 BRD/BRD-A




 BRS/BRS-A



 BRT/BRT-A Top Seller!



 BRW/BRW-A



 KC6



 KC7



Our first product! The owner made her first key chain on the banks of a river in Montana over twenty years ago. Our products are handmade in Montana to this day. Key chains are available with or without colorful beadwork accents. A sturdy split key ring and sunburst conchos accent each piece. Sold in increments of six per style and shipped in assorted horse hair colors. Colors may vary.



 KCB-Top Seller!



 KCW



 KCPL



 GC6

 KCT





ZPB Beaded Zipper Pull, KCB Beaded Key Chain

This simple fan of authentic horse hair is a great addition to jackets, handbags, backpacks, or luggage. Each zipper pull is adorned with a sunburst metal concho and sturdy hook. Sold in increments of six and shipped in assorted horse hair colors. 2 x 2 1/4 inches long.





Model is wearing: CKB Choker, E9-4 Feather Earrings (pg. 22), HBPL Pearl Hatband (pg.48), BC1 Charm Bracelet (pg.39), BST11 Horse Bracelet (pg.40).

These lovely loops of horse hair are worn as a choker by fashion forward cowgirls. Select styles are accented with seed beads, pearls, or faux turquoise and most include a horse charm. Each choker includes an adjustable chain. Shipped in assorted horse hair colors. Adjusts from 13 to 17 inches.



CKB-Top Seller!



CKPL



CKS



CKT



CKG



Flowers and beads hang from a spiral braid of horse hair in the charm necklace. 18 inches long. Available in five flower colors.

CKP7



CKP8



**H**orse hair with a modern twist! This urban looking neckwear features a solid tone spiral braid of horse hair, finished with metal end caps and a lobster claw closure. Shipped in assorted horse hair colors. 18 inches long. Unisex.







Model is wearing: HBT Two-Tone Hatband (pg. 49), CKP1 Blade Neckwear, BST4 Double Sprial Bracelet (pg.43), BST2 Two-Tone Bracelet (pg.42), BST1 Solid Tone Bracelet (pg.42), BST8 Ride Free Bracelet (pg.43), BRD-A Double Strand Adjustable Bracelet, BRW-A Plain Adjustable Bracelet (pg. 5).



**CKP9-Top Seller!**



**CKP10**



**CKP11**



Model is wearing: BBT Two-Tone, BSB Beaded, BBC-O Oval Barrettes.

**O**ur horse hair barrettes feature a high quality French barrette back. Shipped in assorted horse hair colors. Available sizes: Small (2.75 inches), Medium (3.35 inches), or Large (3.85 inches).







BBC-FB



BBC-FG



BBC-FL



BBC-FP



BBC-FR



BBT



BBM



BSB



BBC-O



BSPL

★ BRG-Y  
pg.3



★ CKS-Y  
pg.9



★ CKPL-Y  
pg.8



★ BRPL-Y  
pg.3



★ CKT-Y  
pg.9



★ BR6C2-Y  
pg.4



★ BRT-Y  
pg.5



★ BRW-Y  
pg.5





Model is wearing: CKP7-Y Horseshoe Flower Necklace, BRPLY Pearl, BRF-Y Flower Youth Bracelets.

★ CKP7-Y pg.9



★ New for 2018!

Our top selling basic horse hair gifts are now available in youth sizes. See page listed for product details. Bracelets sold in smaller adjustable style only. Necklaces adjust from 10 to 14 inches using a chain and lobster claw closure. Perfect for young wranglers.

★ CKP8-Y pg. 9

★ BRF-Y pg.3



Our signature fixtures! These welded steel rotating horseshoe displays really increase product sell through. Each offers ample room for our top selling, high volume, low price point items, yet use just inches of counter space. The wooden logo sign has a company bio and draws added attention to the display.



**Four Horseshoe Display**-Available FREE with qualifying product purchase.

**Rack 4-Four Shoe Display Rack 8.75" w x 22" tall.**







**Six Horseshoe Display-** Available FREE with qualifying product purchase.

**Rack 6-** Six Shoe Display Rack 12"w x 22" tall.



Model is wearing: E4F-B Blue Flower Buckle Earrings, N4F-B Blue Flower Buckle Necklace, BC1 Charm Bracelet (pg. 39), BLWW-B Flower Buckle Bracelet (pg.21), WBA-B Blue Wrap Bracelet (pg.20), BRG Gemstone Bracelet (pg.3), BST11 Running Horse Bracelet (pg.40).





**F**lower blossom buckles hang from a twist of beads and horse hair in this necklace. Sold in five flower colors. Lobster claw closure. 18 inches long. Hang tagged.

E4F-L



N4F-L



The buckle style earrings are made with hypoallergenic posts and comfort clutch backs. Available in the same five flower colors as the necklaces. Carded.

E4F-B



N4F-P



N4F-B



E4F-P





Model is wearing: WBA-B Blue Wrap Bracelet, BLWW-B Blue Flower Buckle Bracelet, BC1 Charm Bracelets (pg.39).

**W**rap bracelets lap twice around your wrist for a layered look. These adjustable bracelets have a three-inch chain and lobster claw closure. One size fits all.



**A** basket weave horse hair braid is attached to a 5/8 inch wide band of leather with a snap closure.

Available sizes: Small (7 inches),  
Medium (7.75 inches),  
and Large (8.5 inches).



**BLWW-P**



**BLWW-G**



**BLWW-L**



**BLWW-B**



**BLWW-R**

**F**lower buckle barrettes  
coordinate with all the  
other flower buckle items.  
Available in three sizes.  
(See page 12)



**BBC-FR**



**BBC-FB**



**BBC-FP**



**BBC-FL**



**BBC-FG**



E9-2



E9-3



E9-1



Feather earrings have hypoallergenic French hooks. Carded.

N9-2



N9-3



E9-4



Metal feathers dangle from hypoallergenic French hooks. Carded.

N9-1



Dream catcher feather necklaces feature a metal feather pendant dangling from a stainless steel chain. A second strand of turquoise howlite, freshwater pearls, and colorful seed beads accent our dream catcher medallion and horse hair tassel. Adjusts up to 36 inches. Lobster claw closure. Hang tagged.



Model is wearing: HBT Two-Tone Hatband (pg.49), E7-6 Horse Hair Earrings (pg.31), N9-2 Dream Catcher Necklace, WBA-A Aqua Wrap Bracelet (pg.34), BST9 Feather Bracelet (pg.41), BRG-A Gemstone Adjustable Bracelet, BRC-A Concho Adjustable Bracelet, BRB-A Beaded Adjustable Bracelet, (pgs. 2-3).





Model is wearing: BRG-A Adjustable Gemstone Bracelet (pg.3), RBR-3 Rope Bracelet (pg.38), BRB-A Adjustable Beaded Bracelet (pg.2), E7-1 Horse Hair Earrings (pg.29), N8-1 Copper Feather Necklace, B8-1 Beaded Bracelet, BLGE Tooled Leather Gemstone Bracelet (pg.44), BST9 Feather Bracelet (pg. 41).

This feather bracelet has a double strand of spiral woven horse hair, accented with a metal feather and finished with a sturdy magnetic clasp. Shipped in assorted horse hair colors.

Available sizes:  
Small (7 inches),  
Medium  
(8 inches),  
and Large  
(9 inches).  
Unisex. Gift boxed.  
Best seller of 2017!



BST9





★ N8-1

★ B8-1

### New for 2018!

A metal feather pendant hangs from a variety of colorful beads, pearls, and a spiral braid of horse hair. Necklace adjusts from 17 to 20 inches with a chain and lobster claw closure. Hang tagged. Matching bracelets adjust from 6.5 to 9.5 inches, using a chain and lobster claw closure.



★ B8-3

★ N8-3



E9-4S  
E9-4C

Metal feathers dangle from hypoallergenic French hooks. Available in silver or copper finish. Carded.



★ B8-2

★ N8-2



Model is wearing: N8-6 Skull Necklace, B8-6 Beaded Bracelet, BST9 Feather Bracelet (pg.41), BRC-A Adjustable Concho Bracelet (pg.5), BRC-A Adjustable Gemstone Bracelet (pg.3), WBA-R Wrap Bracelet (pg.20), BLGE Tooled Leather Gemstone Bracelet (pg.44).

### **New for 2018!**

Colorful beads, pearls, and a spiral braid of horse hair are complimented by a metal buffalo skull. Necklace adjusts from 17 to 20 inches with a chain and lobster claw closure. Hang tagged.

Matching bracelets adjust from 6.5 to 9.5 inches using a chain and lobster claw closure.



★ B8-5



★ N8-5



★ N8-4



★ B8-4



★ N8-6



★ B8-6





A chunk of turquoise  
howlite with seed beads.  
Hypoallergenic French  
hooks. Carded.



Stylish tassel necklaces are made with a variety of fresh water  
pearls, turquoise howlite, and seed beads. 30 or 36 inches long.  
Hang tagged.

The new matching bracelets adjust from 6.5 to 9.5 inches using a  
chain and lobster claw closure. Horse hair earrings feature the same  
beads as the necklaces and bracelets. Hypoallergenic French hooks.  
Carded.





Model is wearing: N4-Pearl Hatband (pg.48), N5-P Pink Cab Necklace (pg.33), N7-4 Magenta Pearl Tassel Necklace and B7-4 Tassel Bracelets (pg.30), WBA-A Aqua Wrap Bracelet (pg.34), BLWW-TO Turquoise Bracelet (pg.41).





E7-5



N7-5



★ B7-5



★ B7-4

N7-4

E7-4

See page 28 for full product descriptions of tassel necklaces, bracelets, and earrings.



U E7-6

U N7-6

★ B7-6



Model is wearing: HBPL Pearl Hatband (pg.48), N5-P Pink Cab Necklace (pg.33), N7-4 Magenta Pearl Tassel Necklace and B7-5 tassel bracelet, WBB-A Aqua Wrap Bracelet (pg.34), BLWW-TO Turquoise Bracelet (pg.41).





Model is wearing: E6-B Blue Cab Earrings, N6-B Blue Cabochon Necklace, RBR1 Rope Bracelet (pg.38), BRG-A Gemstone Adjustable Bracelet (pg.3), BC1 Charm Bracelet (pg. 39).

**Cabochon necklaces** feature a spiral braid of horse hair complimented by beads that match a cabochon pendant. These necklaces are available in nine color combinations. Colors are shown here and on following pages. Lobster claw closure. 18 inches long. Hang tagged.

The matching cabochon earrings have hypoallergenic French hooks. Carded.

The wrap bracelets are a spiral braid of horse hair with the same beads as the cabochon necklaces. This bracelet wraps twice around the wrist for a layered look. They have a three-inch chain and lobster claw closure. One size fits all.



WBA-A

WBA-R

WBA-T

WBA-P

WBA-L



E6-R

N6-R



E6-T

N6-T



E6-P

N6-P



E6-L

N6-L





E6-M



E6-A

N6-M



N6-A



N6-B



E6-B

WBA-BR

WBA-M

WBA-G

WBA-B

WBA-A



See pages 32 for full product descriptions of these cabochon necklaces, earrings and bracelets.



Model is wearing: E6-B, Blue Cab Earrings, N6-B Blue Cabochon Necklace.





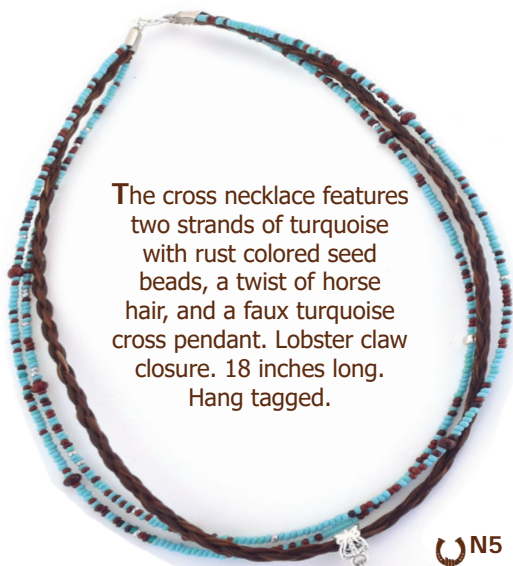
Model is wearing: E10-1 Cross Earrings, N5 Cross Necklace, BST10 Cross Bracelet, WBA-T Turquoise Wrap Bracelet (pg. 32), BLGE- Equine Gemstone Leather Bracelet (pg.44), BRB-A and BRG-A Adjustable Bracelets (pgs.2-3), RBR-3 Rope Bracelet (pg.38).

**A** double braid of horse hair is embellished with a simple metal cross and accents. The clasp features a magnet for easy attachment. Shipped in assorted

horse hair colors.  
Available sizes:  
Small (7 inches),  
Medium (8 inches),  
and Large (9 inch)  
sizes. Unisex. Gift boxed.







The cross necklace features two strands of turquoise with rust colored seed beads, a twist of horse hair, and a faux turquoise cross pendant. Lobster claw closure. 18 inches long. Hang tagged.

E10-1



Cross earrings with hypoallergenic French hooks. Carded.

N5



E7-3



N7-3



Turquoise howlite crosses, seed beads, and freshwater pearls are accented with a horse hair tassel in this necklace. 30 or 36 inches long. Hang tagged. Matching bracelet adjusts from 6.5 to 9.5 inches using a chain and lobster claw closure. Horse hair earrings have the same beads as the necklace. Carded.

★ B7-3



**A** thick rope style horse hair braid is featured in these bracelets. A large lobster claw closure completes each piece. Shipped in assorted horse hair colors. Available sizes: Small (7 inches), Medium (8 inches), and Large (9 inches). Unisex.

 RBR-1



 RBR-2



 RBR-3



Model is wearing: BST8 Ride Free Bracelet (pg.43), RBR-3 Rope Bracelet, BC1 Charm Bracelet.



Silver plated charms and turquoise howlite beads accent this charm bracelet. Stainless steel chain and lobster claw closure ensures one size fits all.



**BB1  
NEW!**

Our matching boot bracelet measures 16 inches long. Lobster claw closure. Hang tagged.





Model is wearing: B8-3 Beaded Bracelet (pg.25), BST12 Arrow Bracelet, RBR-3 Rope Bracelet (pg. 38), WBA-T Turquoise Wrap Bracelet (pg. 32), BLWWO-TO Genuine Turquoise Bracelet.

**M**magnetic clasp bracelets are our signature product. Braided horse hair is decorated with a variety of metal accents and finished with a sturdy magnetic clasp. Shipped in assorted horse hair colors. Available sizes: Small (7 inches), Medium (8 inches), and Large (9 inches). Unisex. Gift boxed.

 **BST-11**





**BST-9**  
Top Seller!



 **BST-10**



★ **BST12**



Oval shaped genuine turquoise, horse hair, and leather are combined in these bracelets. Finished with metal end caps and a snap closure, these 5/8 inch wide leather bracelets are shipped in assorted horse hair colors. Available sizes: Small (7 inches), Medium (7.75 inches), and Large (8.5 inches). Unisex. Gift Boxed.



**BLWW-TO**





Model is wearing: BST2, BST 7, BRW -Plain Bracelet (pg.3).

The rugged styling of our magnetic clasp horse hair bracelets make this group our best sellers for men. Shipped in assorted horse hair colors. Available sizes: Small (7 inches), Medium (8 inches), and Large (9 inches). Unisex. Gift Boxed.



 BST1-Top Seller!



 BST2



 BST6





BST3

BST4



BST7



BST8



BLE



BLC



BLQ



Our tooled leather bracelets are accented with horse hair and sterling silver findings. Secured with a snap closure. Shipped in assorted colors.

Available sizes:

Small (7.125 inches),

Medium (8 inches),

Medium/Large (8.5 inches),

Large (9 inches),

and XLarge (9.25 inches).

Faux turquoise is added to three styles. Unisex. Gift boxed.

BLT



BLW



BLGC



BLGE



BLGQ





Model is wearing: HBT-Two-Tone Hatband (pg. 49), CKP9-Feather Neckware (pg.11), BRW-A Plain Bracelet (pg. 5), BLWW-O, BLT Bracelets.

 BLWW-O



**A** cowboy classic! Our oval concho bracelet has a timeless western look. Horse hair is attached to a 5/8 inch leather band with snap closure. Shipped in assorted horse hair colors. Available sizes: Small (7 inches), Medium (7.75 inches), and Large (8.5 inches). Unisex. Gift boxed.





Model is wearing: HBT-Two-Tone Hatband (pg. 49), BOLT1 Concho Two-Tone Bolo, BLT Two-Tone Leather Bracelet (pg.45), BRW-A Plain Adjustable Bracelet (pg.5), BLWW-O Oval Concho bracelet (pg.45), BRT-A Two-Tone Adjustable Bracelet (pg.5), BST2 Two-Tone Stainless Bracelet (pg.42).

Genuine horse hair strings are sold in either one or two colors of horse hair. Finished with metal tips, bolo concho, and adjustable slide back. Shipped in assorted horse hair colors. 18 inches long. Gift boxed.



**BOLT1  
BOLW1**



 **BOLT2**  
**BOLW2**



 **BOLT3**  
**BOLW3**



 **BOLT4**  
**BOLW4**



 **BOLT5**  
**BOLW5**



Models are both wearing HBPL Pearl Hatbands.

HBB



**A** classic 3/8 inch width, these braided hatbands are accented with leather ends and a buckle clasp. Adjustable to fit any hat size. Shipped in assorted colors. Unisex.

HBPL







★ HBW



U HBT

Our horse hair stampede strings are finished with metal end caps, rings, and include cotter pins for attachment. 26 inches long. Shipped in assorted colors.



U SPS



**B**oost sales with this freestanding rotating floor display. Topped off with our logo sign and company bio. Minimal 16 inch footprint provides flexible merchandising and enhanced variety. This attractive display is FREE with qualifying purchase. Please consult your sales representative for minimums and suggested order packages.

16" x 16"w x 54" tall



**C**owboy Collectibles offers an array of different fixtures to fit the needs of your store and attractively display our products. Ask your sales associate to help put together a customized package featuring all your favorite horse hair accessories.



### **Bracelet Display**

This compact three-tier display holds up to thirty of our bracelets. The small, medium, and large sized felt covered cylinders are removable for easy presentation. **FREE** with qualifying purchase.

12 1/2" w x 8"d x 10" tall



### **Versatile Display**

This rotating fixture comfortably holds our necklaces on six brass hooks (three per side). Additional hooks on the edges provide points of sale for earrings. Other versions of this display include three velvet bars on one side to feature assorted bracelets and three hooks on the other side for

necklaces. A six velvet bar version is also available. Ask your sales associate to tailor this fixture to meet your needs. **FREE** with qualifying purchase. See pages 15 and 16 for our signature horseshoe displays. 11"w x 22" tall







**A** fixture for any season, this two-sided pine wood display has a spinner base and ten 4.25 inch gold hooks for product placement. Predrilled. Choose ten styles of holiday ornaments shown on the opposite page. The display is FREE with qualified product purchase.

**Rack-O** Ornament Display Rack 10.5" w x 17.5" tall.



Each ornament comes tagged with a 1/8 inches satin sash and is decorated with assorted holiday ribbon. The rusty tin shapes are attached to a fan of palomino horsehair, making these ornaments pop off the tree. Sold in increments of six per style.

Ornament sizes vary: 2 1/2" x 3" tall to 4" x 4 1/4" tall.





**COWBOY COLLECTIBLES**  
**AUTHENTIC HORSE HAIR**

**PHOTOGRAPHY:** Sweeney Photography  
[www.sweeneyphotography.org](http://www.sweeneyphotography.org)

**GRAPHIC DESIGN:** CreativeWerks  
[creativewerks@gmail.com](mailto:creativewerks@gmail.com)