



ANDOVER
Pewter

In-Stock Kitchen Cabinetry Catalog and Product Specification Guide

Continental
CABINETS

Table of Contents

| | |
|--|-------|
| Important Information and Standard Terms | 3 |
| Door Styles and Finishes | 4-8 |
| Model Number Guide | 9 |
| Product Specifications | 10-11 |
| Wall Cabinets | 12 |
| Wall Bridge Cabinets | 13 |
| Specialty Wall Cabinets | 14 |
| Base Cabinets | 15 |
| Sink Base Cabinets | 16 |
| Corner Base and Vanity Base Cabinets | 17 |
| Pantry and Double Oven Cabinets | 18 |
| Accessories | 19-21 |
| Wood Characteristics and Product Care | 22 |
| Warranty Information | 23 |

American Woodmark Corporation reserves the right to discontinue the sale or change the specifications of any product at any time keeping within our philosophy of providing continuous improvement. Prices, terms and conditions of sale are subject to change without notice. Every effort was made to assure accuracy of the information contained herein at the time of issue, however, American Woodmark Corporation makes no representations to such accuracies.

Important Information and Standard Terms

Company Information

RSI Home Products
(Subsidiary of American Woodmark Corporation)
400 East Orangethorpe Avenue
Anaheim, CA 92801

Payment Remittance:
RSI Home Products
PO Box 843322
Los Angeles, CA 90084-3322

Contact Information

Continental Cabinets - Customer Care
Hours: Monday – Friday 9:00AM – 6:00PM EST
Phone: (800) 229-5840 Fax: (714) 449-0893
Email: ContinentalCustomerC@Woodmark.com

Order Processing

Orders will ship to the customer within 10 business days from the date order is received excluding holidays. A longer lead time may apply.

Order entry cut-off times are as follows:

- Orders placed before 12:00 PM (EST) M-F will be recognized the same business day.
- Orders placed after 12:00 PM (EST) M-F will be recognized the next business day.
- Holidays are not included in the 10 day turn-around time.

Freight Term Options

- FOB Destination, Freight Prepaid – Less Than Truckload (\$2,000 minimum)*
 - FOB Destination, Freight Prepaid – Truckload (1,800 cubic feet minimum)*
 - FOB Origin, Freight Collect - Less Than Truckload (\$1,500 minimum)
 - FOB Origin, Freight Collect - Truckload (1,800 cubic feet minimum)
- *Destination in the Lower 48 U.S. states, no special handling services available.

Defective Product Return Policy

Product returns are not acceptable.

If the dealer experiences a product damage and believes the damage is a manufacturing or product defect, please contact Continental Cabinets - Customer Care and provide details and supporting documentation relating to claim. If the Customer Care Representative determines the damage is a manufacturing or product defect, the Customer Care Representative will expedite claim resolution. If the Customer Care Representative cannot resolve the issue, a product claim will be submitted to request product credit in accordance with the Dealer's Defective Allowance Terms.

20-20 Design Catalogs

Please contact Continental Cabinets - Customer Care to request a link to download both Finished and Unfinished 20-20 Design Catalogs.

Door Styles and Finishes

Hamilton
Raised Panel



White RTF*

Full Overlay



Medium Oak

Traditional Overlay



Café



Natural Hickory

Andover
Shaker Flat Panel



White RTF*

Full Overlay



Pewter RTF*



Java

Unfinished
Flat Panel

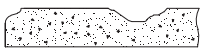
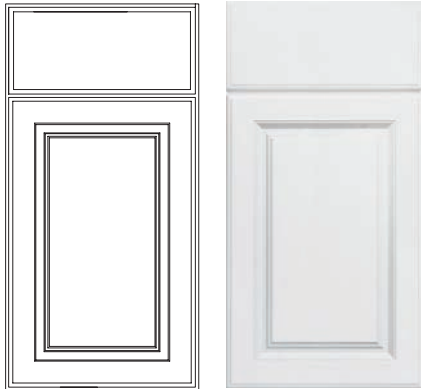


Beech - Ready to Stain or Paint

Traditional Overlay

* RTF= Rigid Thermofoil on MDF

Door Styles and Finishes



2"

Hamilton White RTF

Finish- White (SW)

Details

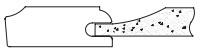
Rigid Thermofoil on MDF

Full Overlay

Raised Panel



Crisp and clean, the Hamilton White door style features a raised panel door with full overlay. With its durable and easy to clean thermofoil finish the Hamilton is perfect for a traditional style kitchen.



2"

Hamilton Oak

Finish- Oak (MO)

Details

Mortise and Tenon Construction

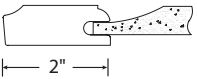
Traditional Overlay

Raised Panel



Warm and inviting, the Hamilton Oak door style features a raised panel door with traditional overlay. You can't go wrong with this timeless style kitchen.

Door Styles and Finishes



Hamilton Café

Finish- Café (COG)

Details

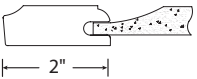
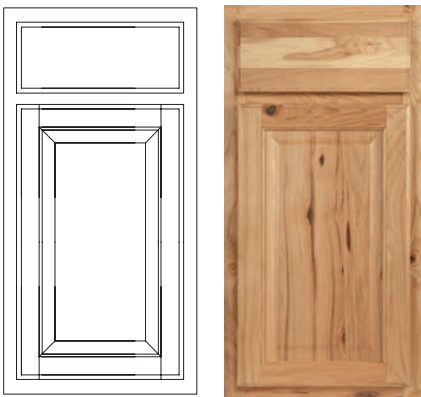
Mortise and Tenon Construction

Traditional Overlay

Raised Panel



Rich and refined, the Hamilton door style in the Café finish features a raised panel door with traditional overlay. Transform your kitchen into an ideal gathering spot for friends and family with this finish.



Hamilton Hickory

Finish- Hickory (NHK)

Details

Mortise and Tenon Construction

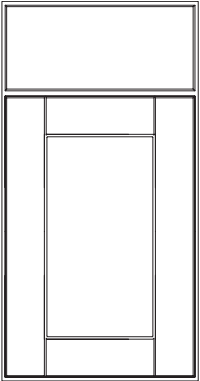
Traditional Overlay

Raised Panel



Rustic and timeless, the Hamilton door style in the Natural Hickory finish features a raised panel door with traditional overlay. Bring a fresh look to your kitchen with this finish.

Door Styles and Finishes



3"

Andover White RTF

Finish- White (SSW)

Details

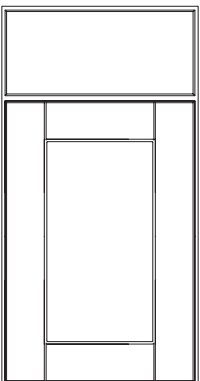
Rigid Thermofoil on MDF

Full Overlay

Shaker Flat Panel



Bright and versatile, the Andover door style in the White finish features a flat panel full overlay door. With its durable thermofoil finish and timeless shaker design, the Andover door style brings an uncluttered aesthetic to any kitchen.



3"

Andover Pewter RTF

Finish- Pewter (SDV)

Details

Rigid Thermofoil on MDF

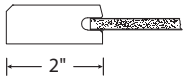
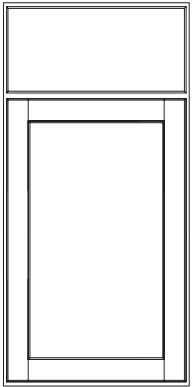
Full Overlay

Shaker Flat Panel



Clean and sophisticated, the Andover door style in the Pewter finish features a flat panel door with full overlay. This on-trend finish combined with the elegantly simple shaker style is a fitting solution for nearly any style of kitchen.

Door Styles and Finishes



Andover Java

Finish- Java (SJM)

Details

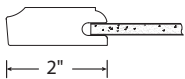
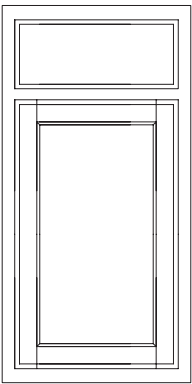
Mortise and Tenon Construction

Full Overlay

Shaker Flat Panel



Rich and welcoming, the Andover door style in the Java finish features a flat panel door with full overlay. From contemporary to transitional, this shaker style door is sure to make you feel at home.



Unfinished Beech

Finish- Unfinished (UF)

Details

Mortise and Tenon Construction

Traditional Overlay

Flat Panel

Ready to Stain or Paint



Let your imagination and creativity flow with the Unfinished Beech door style featuring a flat panel and traditional overlay. These quality cabinets come ready to paint or stain, create a custom look without the high price or wait!

Model Number Guide

FINISHED CABINETRY

| Types of Cabinets | |
|-------------------|------------------------------------|
| W | Wall Cabinet |
| WFC | Wall Flex Cabinet |
| WD | Corner Wall Cabinet |
| WMS | Wall Flex Shelf |
| BF | Base Cabinet with Full Height Door |
| BW | Waste Bin Base Cabinet |
| B | Base Cabinet |
| DB | Drawer Base Cabinet |
| SB | Sink/Cooktop Base Cabinet |
| SBA | Accessible Sink Base |
| CSB | Corner Sink Base Cabinet |
| BBC | Blind Base Corner Cabinet |
| BLSN | Lazy Susan Corner Base Cabinet |
| P | Pantry Cabinet |
| DV | Double Oven Cabinet |

| Types of Accessories | |
|----------------------|--------------------------------|
| AREP | Refrigerator End Panel |
| AS | Wall/Base Flush End Panel |
| AIE | Island/Peninsula End Panel |
| AEP | Decorative Wall/Base End Panel |
| ADEP | Dishwasher End Panel |
| ADPK | Decorative Island Panel Kit |
| AFS | Filler |
| AUP | Universal Panels |
| ADWR | Base Pull-Out Drawer |
| ATK | Toe Kick Molding |
| AMT | Shoe Trim Molding |
| AMS | Scribe Molding |
| AMC4 | Andover Crown Molding |
| AMC5 | Hamilton Crown Molding |
| AMBS | Base Molding |

| Types of Accessories (cont.) | |
|------------------------------|-------------------------|
| AMDE | Decorative Edge Molding |
| AMSQ | Square Edge Molding |
| AOCM | Outside Corner Molding |
| ADCP6 | Decorative Corner Post |

| Door Style and Finish | |
|-----------------------|---------------------------|
| SW | HAMILTON White RTF |
| MO | HAMILTON Oak |
| COG | HAMILTON Café |
| NHK | HAMILTON Hickory |
| SSW | ANDOVER Shaker White RTF |
| SDV | ANDOVER Shaker Pewter RTF |
| SJM | ANDOVER Shaker Java |

UNFINISHED CABINETRY

| Types of Cabinets | |
|-------------------|------------------------------------|
| W | Wall Cabinet |
| WD | Corner Wall Cabinet |
| B | Base Cabinet |
| BF | Base Cabinet with Full Height Door |
| DB | Drawer Base Cabinet |
| SB | Sink/Cooktop Base Cabinet |
| SBA | Accessible Sink Base |
| CSB | Corner Sink Base |
| BLSN | Lazy Susan Corner Base Cabinet |
| BBC | Blind Base Cabinet |
| P | Pantry Cabinet |
| PDR | Drawer Pantry Cabinet |

| Types of Accessories | |
|----------------------|-------------------------|
| ASKW | Wall Veneer End Panel |
| ASKB | Base Veneer End Panel |
| ASKP | Pantry Veneer End Panel |
| ADEP | Dishwasher End Panel |
| ATK | Toe Kick Molding |
| AMT | Shoe Trim Molding |
| AMS | Scribe Molding |
| AMC5 | Crown Molding |
| AOCM | Outside Corder Molding |
| AFS | Filler |
| AOCM | Outside Corner Molding |

| Door Style and Finish | |
|-----------------------|-----------------------|
| UF | Flat Panel Unfinished |

KW1230-UF

| Type of Cabinet/ Accessory | Width (in.) | Height (in.) | Door Style and Finish |
|-------------------------------|----------------|-----------------|--------------------------|
|-------------------------------|----------------|-----------------|--------------------------|

KW 12 30 UF

CBKW1230-COG

| Continental Brand Kitchen | Type of Cabinet / Accessory | Width (in.) | Height (in.) | Door Style and Finish |
|------------------------------|--------------------------------|----------------|-----------------|--------------------------|
|------------------------------|--------------------------------|----------------|-----------------|--------------------------|

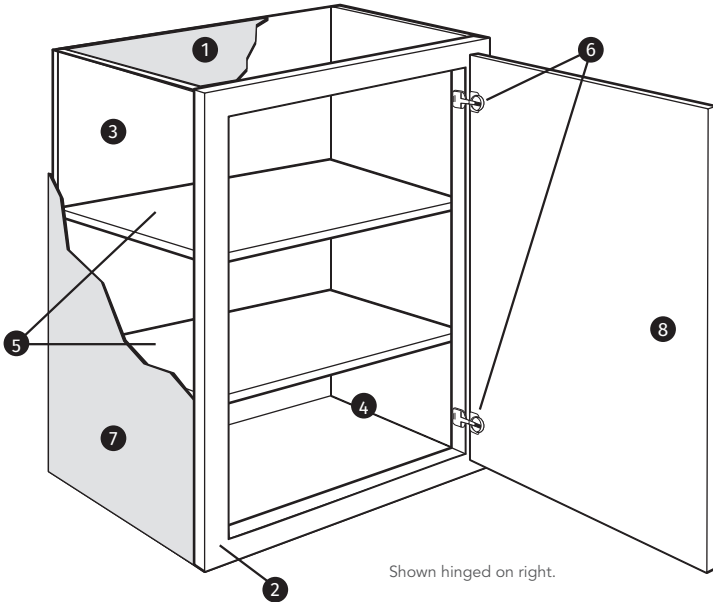
CBK W 12 30 COG

EXAMPLES

Product Specifications

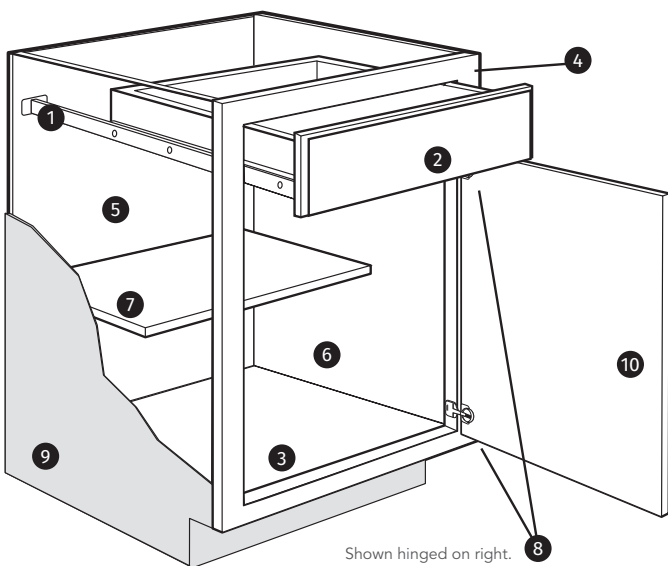
Fully Assembled Cabinetry - Ready to Install

Wall Cabinets



- 1 Top/Bottom Panels: 3/8" engineered wood fully encapsulated in the face frame, back and side panels. Exterior finished in a natural maple laminate.
- 2 Face Frame: Pocket screw construction with 3/4" thick, 1-1/2" wide material.
- 3 Back Panel: Full 3/8" back panel fully encapsulated into top and bottom panels for strength.
- 4 Interiors: Natural maple laminate finish on engineered wood.
- 5 Shelves: 3/4" thick adjustable shelves.
- 6 Hinges: Fully concealed and adjustable.
- 7 End Panels: Finished cabinetry – 1/2" engineered wood with laminated exterior to match cabinet finish; Unfinished cabinetry – 1/2" engineered wood with raw exterior.
- 8 Door: Reversible door on single-door cabinets for left or right opening. Hinged on the left from the factory. Double door cabinets are full-access, no center stile.

Base Cabinets



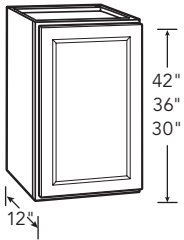
- 1 Drawer Glides: Finished cabinetry – Ball-Bearing. Unfinished cabinetry – Epoxy.
- 2 Drawer Box: Hardwood 4-sided drawer box with fully encapsulated bottom panel.
- 3 Bottom Panels: 3/8" engineered wood fully encapsulated in the face frame, back and side panels.
- 4 Face Frame: Pocket screw construction with 3/4" thick, 1-1/2" wide material.
- 5 Back Panel: Full 3/8" hardboard with a natural maple laminate interior. Sink Base cabinets must be cut for plumbing access.
- 6 Interiors: Natural maple laminate finish on engineered wood.
- 7 Shelf: 3/4" thick adjustable half-depth shelf.
- 8 Hinges: Fully concealed and adjustable.
- 9 End Panels: Finished cabinetry – 1/2" engineered wood with laminated exterior to match cabinet finish; Unfinished cabinetry – 1/2" engineered wood with raw exterior.
- 10 Door: Reversible door on single-door cabinets for left or right opening. Hinged on the left from the factory. Double door cabinets are full-access, no center stile.



Wall Cabinets

All prices shown are list prices

30", 36" & 42"
High Wall Cabinet
(Single Door)



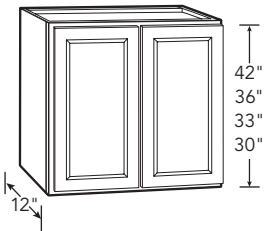
| Model | Hamilton | | | | Andover (Shaker) | | |
|----------|------------|----------|------------|---------------|------------------|--------------|------------|
| | White (SW) | Oak (MO) | Café (COG) | Hickory (NHK) | White (SSW) | Pewter (SDV) | Java (SJM) |
| CBKW930 | 185.00 | 185.00 | 228.00 | 232.00 | 193.00 | 206.00 | 248.00 |
| CBKW1230 | 196.00 | 197.00 | 234.00 | 244.00 | 210.00 | 224.00 | 258.00 |
| CBKW1530 | 212.00 | 212.00 | 251.00 | 262.00 | 225.00 | 240.00 | 278.00 |
| CBKW1830 | 227.00 | 228.00 | 272.00 | 283.00 | 241.00 | 257.00 | 300.00 |
| CBKW2130 | 245.00 | 246.00 | 296.00 | 309.00 | 256.00 | 273.00 | 325.00 |
| CBKW2430 | 250.00 | 251.00 | 300.00 | 317.00 | 266.00 | 284.00 | 331.00 |
| CBKW936 | 221.00 | 221.00 | 266.00 | 275.00 | 231.00 | 246.00 | 287.00 |
| CBKW1236 | 242.00 | 244.00 | 287.00 | 294.00 | 254.00 | 271.00 | 312.00 |
| CBKW1536 | 260.00 | 261.00 | 309.00 | 316.00 | 272.00 | 290.00 | 336.00 |
| CBKW1836 | 280.00 | 281.00 | 335.00 | 342.00 | 293.00 | 312.00 | 362.00 |
| CBKW2136 | 292.00 | 292.00 | 358.00 | 369.00 | 305.00 | 325.00 | 387.00 |
| CBKW2436 | 308.00 | 309.00 | 370.00 | 388.00 | 321.00 | 342.00 | 400.00 |
| CBKW1242 | 278.00 | 279.00 | 328.00 | 336.00 | 290.00 | 309.00 | 355.00 |
| CBKW1542 | 297.00 | 298.00 | 354.00 | 361.00 | 311.00 | 332.00 | 384.00 |
| CBKW1842 | 320.00 | 320.00 | 383.00 | 391.00 | 335.00 | 357.00 | 414.00 |
| CBKW2142 | 339.00 | 329.00 | 399.00 | 409.00 | 333.00 | 369.00 | 429.00 |
| CBKW2442 | 352.00 | 353.00 | 424.00 | 444.00 | 367.00 | 391.00 | 458.00 |

- Includes 2 adjustable shelves
- Reversible door for left or right hinging

| Unfinished | |
|------------|--------|
| Model | |
| KW930-UF | 111.00 |
| KW1230-UF | 122.00 |
| KW1530-UF | 135.00 |
| KW1830-UF | 146.00 |
| KW2130-UF | 171.00 |
| KW2430-UF | 214.00 |
| KW936-UF | 132.00 |
| KW1236-UF | 146.00 |
| KW1536-UF | 161.00 |
| KW1836-UF | 173.00 |
| KW2136-UF | 204.00 |
| KW2436-UF | 257.00 |

- Includes 1 adjustable shelf
- Reversible door for left or right hinging

Wall Cabinet
(Double Door)



| Model | Hamilton | | | | Andover (Shaker) | | |
|----------|------------|----------|------------|---------------|------------------|--------------|------------|
| | White (SW) | Oak (MO) | Café (COG) | Hickory (NHK) | White (SSW) | Pewter (SDV) | Java (SJM) |
| CBKW2730 | 318.00 | 321.00 | 388.00 | 405.00 | 338.00 | 360.00 | 426.00 |
| CBKW3030 | 323.00 | 324.00 | 392.00 | 408.00 | 342.00 | 365.00 | 433.00 |
| CBKW3330 | 369.00 | 399.00 | 409.00 | 429.00 | 359.00 | 419.00 | 449.00 |
| CBKW3630 | 350.00 | 351.00 | 427.00 | 444.00 | 372.00 | 397.00 | 472.00 |
| CBKW2736 | 394.00 | 395.00 | 477.00 | 492.00 | 411.00 | 438.00 | 517.00 |
| CBKW3036 | 397.00 | 398.00 | 485.00 | 495.00 | 415.00 | 442.00 | 524.00 |
| CBKW3336 | 469.00 | 499.00 | 499.00 | 519.00 | 459.00 | 479.00 | 521.00 |
| CBKW3636 | 431.00 | 432.00 | 527.00 | 543.00 | 450.00 | 480.00 | 571.00 |
| CBKW2742 | 449.00 | 449.00 | 539.00 | 549.00 | 459.00 | 479.00 | 569.00 |
| CBKW3042 | 454.00 | 455.00 | 554.00 | 566.00 | 474.00 | 505.00 | 599.00 |
| CBKW3342 | 519.00 | 549.00 | 540.00 | 569.00 | 499.00 | 509.00 | 595.00 |
| CBKW3642 | 494.00 | 495.00 | 602.00 | 621.00 | 515.00 | 549.00 | 652.00 |

- Includes 2 adjustable shelves

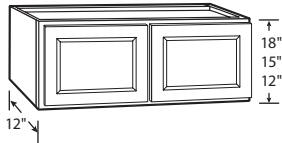
| Unfinished | |
|------------|--------|
| Model | |
| KW2730-UF | 217.00 |
| KW3030-UF | 236.00 |
| N/A | |
| KW3630-UF | 282.00 |
| KW2736-UF | 259.00 |
| KW3036-UF | 284.00 |
| N/A | |
| KW3636-UF | 340.00 |

- Includes 2 adjustable shelves

Wall Bridge Cabinets

All prices shown are list prices

12", 15" & 18" High Wall Bridge Cabinet



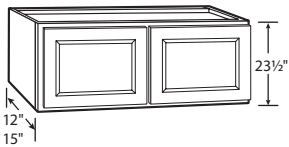
| Model | Hamilton | | | | Andover (Shaker) | | |
|----------|------------|----------|------------|---------------|------------------|--------------|------------|
| | White (SW) | Oak (MO) | Café (COG) | Hickory (NHK) | White (SSW) | Pewter (SDV) | Java (SJM) |
| CBKW3012 | 217.00 | 218.00 | 263.00 | 278.00 | 227.00 | 242.00 | 291.00 |
| CBKW3612 | 230.00 | 230.00 | 273.00 | 282.00 | 240.00 | 256.00 | 296.00 |
| CBKW3015 | 222.00 | 223.00 | 264.00 | 280.00 | 236.00 | 252.00 | 292.00 |
| CBKW3615 | 236.00 | 237.00 | 282.00 | 297.00 | 251.00 | 268.00 | 313.00 |
| CBKW3018 | 237.00 | 237.00 | 286.00 | 303.00 | 252.00 | 269.00 | 317.00 |
| CBKW3618 | 271.00 | 278.00 | 341.00 | 354.00 | 300.00 | 320.00 | 362.00 |

• No shelves

| Unfinished | |
|------------|--------|
| Model | |
| KW3012-UF | 129.00 |
| KW3612-UF | 169.00 |
| KW3015-UF | 160.00 |
| KW3615-UF | 190.00 |
| KW3018-UF | 162.00 |
| KW3618-UF | 188.00 |

• No shelves

23½" High Wall Bridge Cabinet



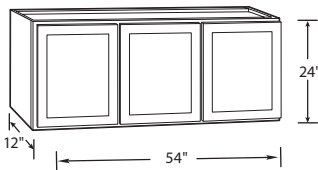
| Model | Hamilton | | | | Andover (Shaker) | | |
|-------------|------------|----------|------------|---------------|------------------|--------------|------------|
| | White (SW) | Oak (MO) | Café (COG) | Hickory (NHK) | White (SSW) | Pewter (SDV) | Java (SJM) |
| CBKW3024 | 307.00 | 326.00 | 353.00 | 363.00 | 320.00 | 341.00 | 382.00 |
| CBKW3624 | 334.00 | 334.00 | 425.00 | 441.00 | 347.00 | 370.00 | 464.00 |
| CBKW302415* | 314.00 | 332.00 | 360.00 | 371.00 | 327.00 | 349.00 | 391.00 |

• Includes 1 adjustable shelf
*CBKW302415 is 15" deep

| Unfinished | |
|--------------|--------|
| Model | |
| KW3024-UF | 194.00 |
| KW3624-UF | 204.00 |
| KW302415-UF* | 208.00 |

• No adjustable shelf
* KW302415-UF is 15" deep

24" High Wall Bridge Cabinet



| Model | Hamilton | | | | Andover (Shaker) | | |
|-------|------------|----------|------------|---------------|------------------|--------------|------------|
| | White (SW) | Oak (MO) | Café (COG) | Hickory (NHK) | White (SSW) | Pewter (SDV) | Java (SJM) |
| N/A | | | | | | | |

| Unfinished | |
|------------|--------|
| Model | |
| KW5424-UF | 301.00 |

• 1 large shelf

36" Wide Deep Bridge Cabinet



| Model | Hamilton | | | | Andover (Shaker) | | |
|------------|------------|----------|------------|---------------|------------------|--------------|------------|
| | White (SW) | Oak (MO) | Café (COG) | Hickory (NHK) | White (SSW) | Pewter (SDV) | Java (SJM) |
| CBKW361224 | 313.00 | 331.00 | 351.00 | 355.00 | 334.00 | 356.00 | 366.00 |
| CBKW361824 | 375.00 | 385.00 | 398.00 | 413.00 | 378.00 | 403.00 | 413.00 |
| CBKW362424 | 458.00 | 465.00 | 482.00 | 495.00 | 462.00 | 492.00 | 491.00 |

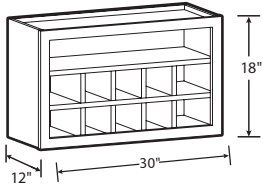
• Designed for use with Refrigerator End Panel
• Must be attached to back wall and either cabinet or walls on both sides
*24" H model comes with one shelf

| Unfinished | |
|------------|--|
| Model | |
| N/A | |

Specialty Wall Cabinets

All prices shown are list prices

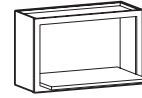
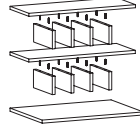
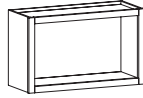
18" High Wall Flex Cabinet



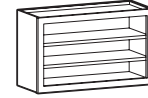
| Model | Hamilton | | | | Andover (Shaker) | | |
|------------|------------|----------|------------|---------------|------------------|-------------|-----------|
| | White (SW) | Oak (MO) | Café (COG) | Hickory (NHK) | White (SW) | Pewter (DV) | Java (JM) |
| CBKWFC3018 | 265.00 | 270.00 | 287.00 | 296.00 | 265.00 | 283.00 | 302.00 |

• Cabinet box is assembled, shelves are shipped loose

| Unfinished | |
|------------|-----|
| Model | |
| | N/A |

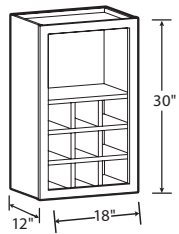


Microwave Shelf



Open Shelves

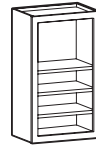
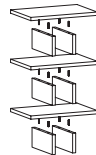
30" High Wall Flex Cabinet



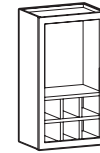
| Model | Hamilton | | | | Andover (Shaker) | | |
|------------|------------|----------|------------|---------------|------------------|-------------|-----------|
| | White (SW) | Oak (MO) | Café (COG) | Hickory (NHK) | White (SW) | Pewter (DV) | Java (JM) |
| CBKWFC1830 | 236.00 | 241.00 | 258.00 | 264.00 | 236.00 | 252.00 | 266.00 |

• Cabinet box is assembled, shelves are shipped loose

| Unfinished | |
|------------|-----|
| Model | |
| | N/A |

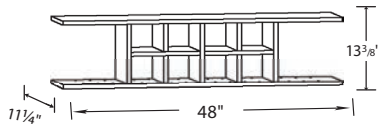


Open Shelves



Organizer Cubes

48" Wide Wall Flex Shelf

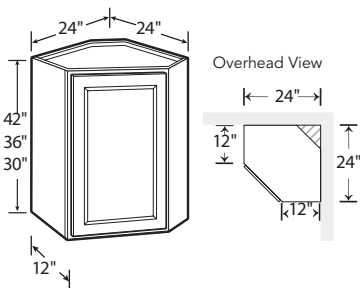


| Model | Hamilton | | | | Andover (Shaker) | | |
|----------|------------|----------|------------|---------------|------------------|-------------|-----------|
| | White (SW) | Oak (MO) | Café (COG) | Hickory (NHK) | White (SW) | Pewter (DV) | Java (JM) |
| KWMS4813 | 219.00 | 219.00 | 219.00 | 221.00 | 219.00 | 225.00 | 219.00 |

• Shelf box is assembled, shelves are shipped loose

| Unfinished | |
|------------|-----|
| Model | |
| | N/A |

24" Corner Wall Cabinet



| Model | Hamilton | | | | Andover (Shaker) | | |
|-----------|------------|----------|------------|---------------|------------------|--------------|------------|
| | White (SW) | Oak (MO) | Café (COG) | Hickory (NHK) | White (SSW) | Pewter (SDV) | Java (SJM) |
| CBKWD2430 | 353.00 | 358.00 | 415.00 | 432.00 | 375.00 | 400.00 | 458.00 |
| CBKWD2436 | 434.00 | 440.00 | 511.00 | 524.00 | 454.00 | 484.00 | 554.00 |
| CBKWD2442 | 497.00 | 504.00 | 585.00 | 600.00 | 519.00 | 553.00 | 633.00 |

• Installs in a 24" x 24" wall area
 • 30" includes 1 adjustable shelf
 • 36" and 42" include 2 adjustable shelves
 • Reversible door for left or right hinging

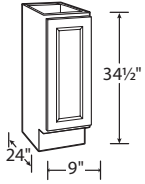
| Unfinished | |
|------------|--------|
| Model | |
| KWD2430-UF | 267.00 |
| KWD2436-UF | 321.00 |

• Installs in a 24" x 24" wall area
 • Includes 1 adjustable shelf
 • Reversible door for left or right hinging

Base Cabinets

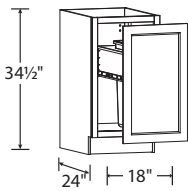
All prices shown are list prices

Base (Full-Height Door)



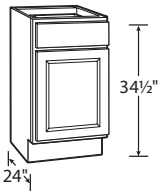
| Model | Hamilton | | | | Andover (Shaker) | | | Unfinished | |
|--|------------|----------|------------|---------------|------------------|--------------|------------|---|--------|
| | White (SW) | Oak (MO) | Café (COG) | Hickory (NHK) | White (SSW) | Pewter (SDV) | Java (SJM) | Model | |
| CBKBF09 | 260.00 | 261.00 | 292.00 | 301.00 | 272.00 | 290.00 | 316.00 | KBF09-UF | 158.00 |
| <ul style="list-style-type: none"> One, half-depth adjustable shelf included Reversible door for left or right hinging | | | | | | | | <ul style="list-style-type: none"> One, half-depth adjustable shelf included | |

Waste Bin Base



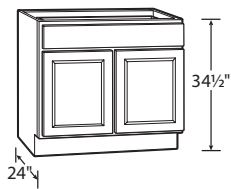
| Model | Hamilton | | | | Andover (Shaker) | | | Unfinished | |
|---|------------|----------|------------|---------------|------------------|--------------|------------|------------|--|
| | White (SW) | Oak (MO) | Café (COG) | Hickory (NHK) | White (SSW) | Pewter (SDV) | Java (SJM) | Model | |
| CBKBW18 | 492.00 | 503.00 | 555.00 | 562.00 | 525.00 | 559.00 | 586.00 | N/A | |
| <ul style="list-style-type: none"> Includes a 12 gallon trash can Heavy duty ball-bearing drawer glides | | | | | | | | | |

Base (Single Door)



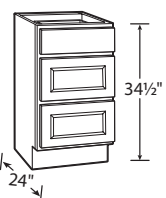
| Model | Hamilton | | | | Andover (Shaker) | | | Unfinished | |
|---|------------|----------|------------|---------------|------------------|--------------|------------|--|--------|
| | White (SW) | Oak (MO) | Café (COG) | Hickory (NHK) | White (SSW) | Pewter (SDV) | Java (SJM) | Model | |
| CBKB12 | 270.00 | 271.00 | 315.00 | 328.00 | 287.00 | 306.00 | 349.00 | KB12-UF | 175.00 |
| CBKB15 | 291.00 | 291.00 | 343.00 | 359.00 | 309.00 | 329.00 | 380.00 | KB15-UF | 186.00 |
| CBKB18 | 306.00 | 309.00 | 366.00 | 382.00 | 326.00 | 348.00 | 404.00 | KB18-UF | 205.00 |
| CBKB21 | 338.00 | 339.00 | 406.00 | 419.00 | 355.00 | 378.00 | 445.00 | KB21-UF | 240.00 |
| CBKB24 | 342.00 | 346.00 | 408.00 | 425.00 | 364.00 | 388.00 | 450.00 | KB24-UF | 245.00 |
| <ul style="list-style-type: none"> Ball-bearing drawer glides One, half-depth adjustable shelf included Reversible door for left or right hinging – ships left hinge | | | | | | | | <ul style="list-style-type: none"> Epoxy drawer glides One, half-depth adjustable shelf included | |

Base (Double Door)



| Model | Hamilton | | | | Andover (Shaker) | | | Unfinished | |
|---|------------|----------|------------|---------------|------------------|--------------|------------|--|--------|
| | White (SW) | Oak (MO) | Café (COG) | Hickory (NHK) | White (SSW) | Pewter (SDV) | Java (SJM) | Model | |
| CBKB27 | 415.00 | 416.00 | 500.00 | 510.00 | 437.00 | 466.00 | 545.00 | KB27-UF | 304.00 |
| CBKB30 | 418.00 | 419.00 | 505.00 | 526.00 | 443.00 | 472.00 | 554.00 | KB30-UF | 318.00 |
| CBKB33 | 469.00 | 519.00 | 529.00 | 549.00 | 463.00 | 492.00 | 579.00 | N/A | |
| CBKB36 | 454.00 | 455.00 | 552.00 | 575.00 | 482.00 | 514.00 | 607.00 | KB36-UF | 348.00 |
| <ul style="list-style-type: none"> Ball-bearing drawer glides One, half-depth adjustable shelf included | | | | | | | | <ul style="list-style-type: none"> Epoxy drawer glides One, half-depth adjustable shelf included | |

Drawer Base

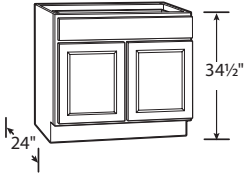


| Model | Hamilton | | | | Andover (Shaker) | | | Unfinished | |
|--|------------|----------|------------|---------------|------------------|--------------|------------|---|--------|
| | White (SW) | Oak (MO) | Café (COG) | Hickory (NHK) | White (SSW) | Pewter (SDV) | Java (SJM) | Model | |
| CBKDB18 | 439.00 | 444.00 | 519.00 | 540.00 | 479.00 | 510.00 | 587.00 | KDB18-UF | 348.00 |
| CBKDB24 | 616.00 | 617.00 | 688.00 | 709.00 | 652.00 | 695.00 | 755.00 | KDB24-UF | 409.00 |
| CBKDB30 | 708.00 | 728.00 | 789.00 | 823.00 | 775.00 | 826.00 | 852.00 | <ul style="list-style-type: none"> Epoxy drawer glides | |
| CBKDB36 | 843.00 | 859.00 | 938.00 | 979.00 | 931.00 | 992.00 | 990.00 | | |
| <ul style="list-style-type: none"> 18" and 24" include ball-bearing drawer glides 30" and 36" include full extension heavy duty drawer glides, on all three drawers, ideal for pots and pans | | | | | | | | | |

Sink Base Cabinets

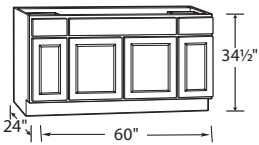
All prices shown are list prices

Sink/Cooktop Base



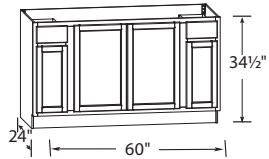
| Model | Hamilton | | | | Andover (Shaker) | | | Unfinished | |
|---------|------------|----------|------------|---------------|------------------|--------------|------------|------------|--------|
| | White (SW) | Oak (MO) | Café (COG) | Hickory (NHK) | White (SSW) | Pewter (SDV) | Java (SJM) | Model | |
| CBKSB30 | 317.00 | 337.00 | 425.00 | 436.00 | 360.00 | 384.00 | 477.00 | KSB30-UF | 278.00 |
| CBKSB36 | 376.00 | 376.00 | 462.00 | 481.00 | 400.00 | 426.00 | 509.00 | KSB36-UF | 284.00 |

Sink/Cooktop Base

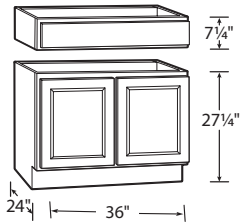


| Model | Hamilton | | | | Andover (Shaker) | | | Unfinished Oak | |
|---------|------------|----------|------------|---------------|------------------|--------------|------------|----------------|--------|
| | White (SW) | Oak (MO) | Café (COG) | Hickory (NHK) | White (SSW) | Pewter (SDV) | Java (SJM) | Model | |
| CBKSB60 | 704.00 | 707.00 | N/A | | N/A | | | KSBF60-UF | 460.00 |

- Ball-bearing drawer glides
- Epoxy drawer glides



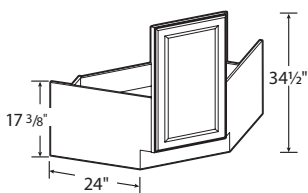
36" Accessible Sink Base Cabinet



| Model | Hamilton | | | | Andover (Shaker) | | | Unfinished | |
|---------|------------|----------|------------|---------------|------------------|--------------|------------|------------|--------|
| | White (SW) | Oak (MO) | Café (COG) | Hickory (NHK) | White (SSW) | Pewter (SDV) | Java (SJM) | Model | |
| CBKSB36 | 503.00 | 503.00 | 540.00 | 558.00 | 535.00 | 570.00 | 570.00 | KSBA36-UF | 432.00 |

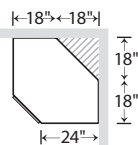
- Exterior side panels are finished in a natural maple laminate

36" Corner Sink Base Cabinet

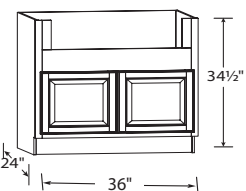


| Model | Hamilton | | | | Andover (Shaker) | | | Unfinished | |
|--------|------------|----------|------------|---------------|------------------|--------------|------------|------------|--------|
| | White (SW) | Oak (MO) | Café (COG) | Hickory (NHK) | White (SSW) | Pewter (SDV) | Java (SJM) | Model | |
| KCSB36 | 305.00 | 312.00 | 330.00 | 341.00 | 323.00 | 344.00 | 362.00 | KCSB36-UF | 243.00 |

- Ready to assemble
- Installs in a 36" x 36" wall area
- Exterior side panels are finished in a natural maple laminate



36" "Farmhouse" Apron Sink Base Cabinet



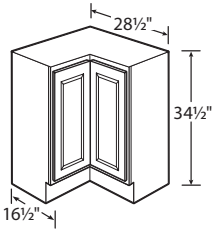
| Model | Hamilton | | | | Andover (Shaker) | | | Unfinished | |
|--------|------------|----------|------------|---------------|------------------|--------------|------------|------------|--|
| | White (SW) | Oak (MO) | Café (COG) | Hickory (NHK) | White (SSW) | Pewter (SDV) | Java (SJM) | Model | |
| KSBD36 | 545.00 | 553.00 | 589.00 | 573.00 | 597.00 | 634.00 | 605.00 | N/A | |

- 2" side stiles and 4" rail are trimmable to accommodate various size apron front sinks and cooktops
- 29"W opening for sinks can be trimmed to 33"W
- 7 1/2"H trimmable to 11"H
- Can accommodate smaller sizes with use of 3" or 6" filler

Corner Base Cabinets and Vanity Base Cabinets

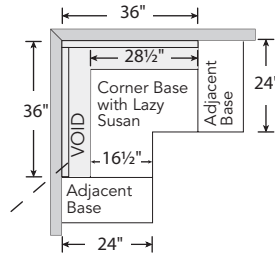
All prices shown are list prices

36" Corner Base with Lazy Susan

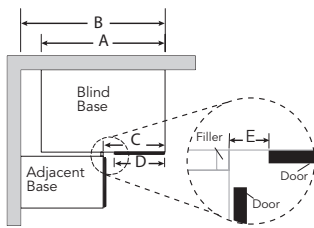
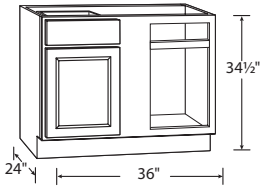


Requires cleats to be installed in the corner to support the countertop

| Model | Hamilton | | | | Andover (Shaker) | | | Unfinished | |
|---|------------|----------|------------|---------------|------------------|--------------|------------|---|--------|
| | White (SW) | Oak (MO) | Café (COG) | Hickory (NHK) | White (SSW) | Pewter (SDV) | Java (SJM) | Model | |
| CBKBLS36 | 573.00 | 575.00 | 656.00 | 682.00 | 602.00 | 641.00 | 716.00 | KBLSN36-UF | 575.00 |
| <ul style="list-style-type: none"> Installs in a 36" x 36" wall area Two-piece overlay door hinged together in the middle Two 360° independently rotating metal racks Exterior side panels are finished in a natural maple laminate | | | | | | | | <ul style="list-style-type: none"> Fixed traveling door rotates inside of cabinet Two metal racks | |



36" Blind Corner Base Cabinet

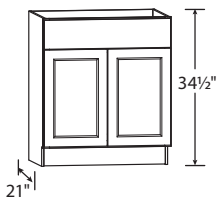
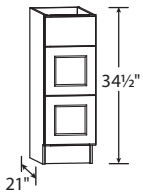


| Model | Hamilton | | | | Andover (Shaker) | | | Unfinished | |
|--|------------|----------|------------|---------------|------------------|--------------|------------|---|--------|
| | White (SW) | Oak (MO) | Café (COG) | Hickory (NHK) | White (SSW) | Pewter (SDV) | Java (SJM) | Model | |
| CBKBBC45 | 371.00 | 374.00 | 437.00 | 463.00 | 412.00 | 439.00 | 499.00 | KBBC45-UF | 305.00 |
| <ul style="list-style-type: none"> Ball-bearing drawer glides Door and drawer are reversible to accommodate leftor right blind | | | | | | | | <ul style="list-style-type: none"> Epoxy drawer glides | |

| Overlay | A | B | C | D | E | Max B | Min B |
|---------------------|-----|-----|-----|---------|--------|---------|---------|
| Traditional Overlay | 36" | 42" | 18" | 13" | 4" | 46 1/2" | 39 1/4" |
| Full Overlay | 36" | 42" | 18" | 14 3/4" | 3 1/8" | 46 1/2" | 40 1/8" |
| Unfinished | 36" | 42" | 18" | 14" | 3 1/2" | 46 1/2" | 39 3/4" |

• Dimensions C & E only apply when cabinet is pulled to 42"

Vanity Base Cabinets

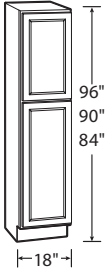


| Model | Hamilton | | | | Andover (Shaker) | | | Unfinished | | |
|---|------------|----------|------------|---------------|------------------|--------------|------------|------------|--|--|
| | White (SW) | Oak (MO) | Café (COG) | Hickory (NHK) | White (SSW) | Pewter (SDV) | Java (SJM) | Model | | |
| KVDB12 | 365.00 | 365.00 | 394.00 | 404.00 | 378.00 | 403.00 | 430.00 | N/A | | |
| KVDB15 | 399.00 | 399.00 | 452.00 | 459.00 | 409.00 | 439.00 | 489.00 | | | |
| KVSB24 | 290.00 | 335.00 | 390.00 | 409.00 | 325.00 | 347.00 | 412.00 | | | |
| KVSB27 | 309.00 | 341.00 | 409.00 | 429.00 | 329.00 | 351.00 | 449.00 | | | |
| KVSB30 | 325.00 | 345.00 | 436.00 | 459.00 | 333.00 | 355.00 | 480.00 | | | |
| KVSB33 | 352.00 | 395.00 | 446.00 | 469.00 | 359.00 | 375.00 | 499.00 | | | |
| KVSB36 | 360.00 | 375.00 | 458.00 | 478.00 | 379.00 | 404.00 | 515.00 | | | |
| <ul style="list-style-type: none"> KVSB24, KVSB27, KVSB30, KVSB33 and KVSB36 - Vanity sink bases are doors only KVDB12 & KVDB15 includes three drawers. If required for top drawer, 4 "L" brackets and 8 screws are provided to reattach the drawer to create a false drawer front. | | | | | | | | | | |

Pantry and Double Oven Cabinets

All prices shown are list prices

18" Pantry



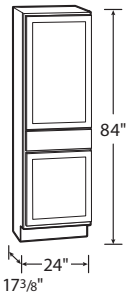
| Model | Hamilton | | | | Andover (Shaker) | | |
|----------|------------|----------|------------|---------------|------------------|--------------|------------|
| | White (SW) | Oak (MO) | Café (COG) | Hickory (NHK) | White (SSW) | Pewter (SDV) | Java (SJM) |
| CBKP1884 | 627.00 | 629.00 | 732.00 | 761.00 | 666.00 | 710.00 | 809.00 |
| CBKP1890 | 823.00 | 825.00 | 912.00 | 932.00 | 858.00 | 914.00 | 985.00 |
| CBKP1896 | 921.00 | 922.00 | 989.00 | 1008.00 | 960.00 | 1023.00 | 1069.00 |

- 84" and 90" includes 3 adjustable shelves
- 96" includes 4 adjustable shelves
- Minor assembly of toe kick is required on 96" pantry
- Upper door lines up with 30", 36" and 42" high wall cabinets
- Reversible door for left or right hinging

| Unfinished | |
|------------|--------|
| Model | |
| KP1884-UF | 512.00 |
| KP1890-UF | 621.00 |

- Includes 2 adjustable shelves
- Upper door lines up with 30", 36" and 42" high wall cabinets
- Reversible door for left or right hinging

24" Drawer Pantry

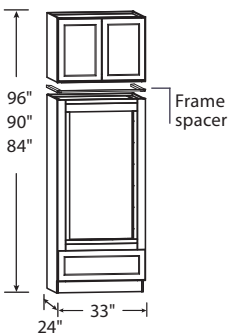


| Model | Hamilton | | | | Andover (Shaker) | | |
|-------|------------|----------|------------|---------------|------------------|--------------|------------|
| | White (SW) | Oak (MO) | Café (COG) | Hickory (NHK) | White (SSW) | Pewter (SDV) | Java (SJM) |
| N/A | | | | | | | |

| Unfinished | |
|-------------|--------|
| Model | |
| KPDR2484-UF | 482.00 |

- Epoxy drawer glides
- Includes 2 adjustable shelves
- Reversible door for left or right hinging

Double Oven Cabinet



| Model | Hamilton | | | | Andover (Shaker) | | |
|---------|------------|----------|------------|---------------|------------------|--------------|------------|
| | White (SW) | Oak (MO) | Café (COG) | Hickory (NHK) | White (SSW) | Pewter (SDV) | Java (SJM) |
| KDV3384 | 1,016.00 | 1,020.00 | 1,174.00 | 1,177.00 | 1,002.00 | 1,067.00 | 1,194.00 |
| KDV3390 | 1,069.00 | 1,080.00 | 1,237.00 | 1,239.00 | 1,092.00 | 1,163.00 | 1,259.00 |
| KDV3396 | 1,202.00 | 1,205.00 | 1,395.00 | 1,403.00 | 1,216.00 | 1,295.00 | 1,418.00 |

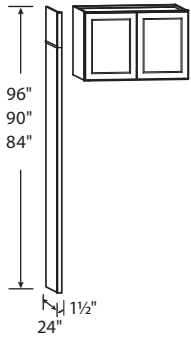
- Includes drawer with full extension heavy duty drawer glides
- Includes 24" Deep Bridge Cabinet
- Overhead Bridge Cabinet is not pre-installed to oven cabinet, comes as two pieces, boxed separately
- Rails and stiles around oven opening are trimmable
- Cut-out dimensions: W: 24" minimum, 30" maximum*, H: 47 7/8" minimum, 52 1/8" maximum
- *Can accommodate smaller sizes with use of 3" and 6" filler
- Frame spacer included in KDV3396 only; 96"H double oven overhead bridge cabinet is 23 1/2" H

| Unfinished | |
|------------|--|
| Model | |
| N/A | |

Accessories

All prices shown are list prices

24" Refrigerator End Panel Kit

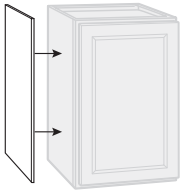


| Model | Hamilton | | | | Andover (Shaker) | | |
|-------|------------|----------|------------|---------------|------------------|-------------|------------|
| | White (SW) | Oak (MO) | Café (COG) | Hickory (NHK) | White (SSW) | Pewter (DV) | Java (SJM) |
| KAREP | 210.00 | 214.00 | 248.00 | 256.00 | 210.00 | 224.00 | 263.00 |

- 84"H panel kit includes 2 additional panels that extend reach to heights of 90"H and 96"H
- Will require cleat material to fasten to the wall
- Reversible for left and right application

| Unfinished | |
|------------|--|
| Model | |
| N/A | |

Wall & Base Flush Fit End Panel



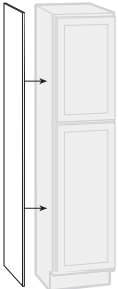
| Model | Hamilton | | | | Andover (Shaker) | | |
|----------------------|------------|----------|------------|---------------|------------------|-------------|-----------|
| | White (SW) | Oak (MO) | Café (COG) | Hickory (NHK) | White (SW) | Pewter (DV) | Java (JM) |
| CBKAS1230 (2/Pack) | 46.00 | 46.00 | 50.00 | 53.00 | 46.00 | 48.00 | 54.00 |
| CBKAS1236 (2/Pack) | 52.00 | 52.00 | 65.00 | 88.00 | 52.00 | 53.00 | 69.00 |
| CBKAS1242 (2/Pack) | 56.00 | 57.00 | 79.00 | 98.00 | 56.00 | 58.00 | 83.00 |
| CBKAS2435 (2/Pack) | 90.00 | 90.00 | 98.00 | 103.00 | 90.00 | 93.00 | 106.00 |
| CBKAIE4835X (Single) | 184.00 | 185.00 | 204.00 | 255.00 | 184.00 | 189.00 | 216.00 |

- Finished veneer panels fit flush. White panels are laminate
- Wall panels are 11 1/4"W
- Base panels are 23 1/4"W x 34 1/2"H
- Island/Peninsula panel is 48"W x 34 1/2"H

| Unfinished | |
|------------|-------|
| Model | |
| KASKW30-UF | 11.00 |
| KASKW36-UF | 24.00 |
| N/A | |
| KASKB35-UF | 25.00 |

- 1/8" thick veneer panels

Pantry End Panel

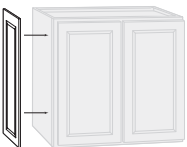


| Model | Hamilton | | | | Andover (Shaker) | | |
|-------|------------|----------|------------|---------------|------------------|-------------|------------|
| | White (SW) | Oak (MO) | Café (COG) | Hickory (NHK) | White (SSW) | Pewter (DV) | Java (SJM) |
| N/A | | | | | | | |

| Unfinished | |
|------------|-------|
| Model | |
| KASKP84-UF | 69.00 |
| KASKP90-UF | 78.00 |

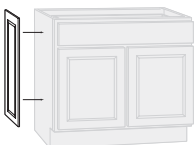
- 1/8" thick veneer panels

Decorative End Panel



| Model | Hamilton | | | | Andover (Shaker) | | |
|------------|------------|----------|------------|---------------|------------------|--------------|------------|
| | White (SW) | Oak (MO) | Café (COG) | Hickory (NHK) | White (SSW) | Pewter (SDV) | Java (SJM) |
| CBKAEP1230 | 71.00 | 71.00 | 81.00 | 83.00 | 76.00 | 81.00 | 89.00 |
| CBKAEP1236 | 80.00 | 80.00 | 94.00 | 97.00 | 83.00 | 89.00 | 102.00 |
| CBKAEP1242 | 88.00 | 88.00 | 103.00 | 106.00 | 93.00 | 100.00 | 112.00 |
| CBKAEP2430 | 111.00 | 111.00 | 129.00 | 133.00 | 116.00 | 124.00 | 140.00 |

| Unfinished | |
|------------|--|
| Model | |
| N/A | |

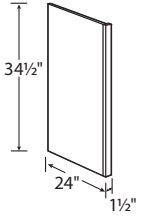


| Wall Cabinet | Width | Height | | | Base Cabinet | Width | Height |
|---------------------|-------|------------|------------|------------|---------------------|-------|---------|
| | | CBKAEP1230 | CBKAEP1236 | CBKAEP1242 | CBKAEP2430 | | |
| Traditional Overlay | 10" | 27 3/4" | 33 3/4" | 39 3/4" | Traditional Overlay | 22" | 27 3/4" |
| Full Overlay | 11" | 29 3/8" | 35 1/4" | 41 1/4" | Full Overlay | 23" | 29 3/8" |

Accessories

All prices shown are list prices

Dishwasher End Panel



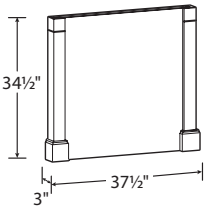
| Hamilton | | | | | Andover (Shaker) | | |
|----------|------------|----------|------------|---------------|------------------|-------------|-----------|
| Model | White (SW) | Oak (MO) | Café (COG) | Hickory (NHK) | White (SW) | Pewter (DV) | Java (JM) |
| CBKADEP | 90.00 | 91.00 | 98.00 | 106.00 | 90.00 | 93.00 | 104.00 |

- Will require cleat material to fasten to the wall
- Reversible for left and right application

| Unfinished | |
|------------|-------|
| Model | |
| KADEP-UF | 65.00 |

- Will require cleat material to fasten to the wall
- Reversible for left and right application
- Veneer finished on outside of panel

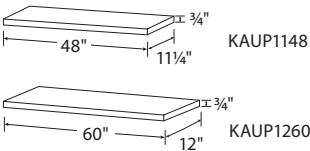
Decorative Island Panel Kit



| Hamilton | | | | | Andover (Shaker) | | |
|----------|------------|----------|------------|---------------|------------------|-------------|-----------|
| Model | White (SW) | Oak (MO) | Café (COG) | Hickory (NHK) | White (SW) | Pewter (DV) | Java (JM) |
| KADPK337 | 384.00 | 392.00 | 415.00 | 430.00 | 384.00 | 409.00 | 437.00 |

| Unfinished | |
|------------|--|
| Model | |
| N/A | |

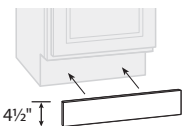
Universal Panels



| Hamilton | | | | | Andover (Shaker) | | |
|----------|------------|----------|------------|---------------|------------------|-------------|-----------|
| Model | White (SW) | Oak (MO) | Café (COG) | Hickory (NHK) | White (SW) | Pewter (DV) | Java (JM) |
| KAUP1148 | 44.00 | 45.00 | 48.00 | 49.00 | 44.00 | 47.00 | 50.00 |
| KAUP1260 | 60.00 | 61.00 | 66.00 | 68.00 | 60.00 | 64.00 | 69.00 |

| Unfinished | |
|------------|--|
| Model | |
| N/A | |

9 1/2" Toe Kick Molding

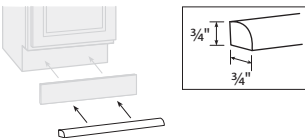


| Hamilton | | | | | Andover (Shaker) | | |
|-------------------|------------|----------|------------|---------------|------------------|-------------|-----------|
| Model | White (SW) | Oak (MO) | Café (COG) | Hickory (NHK) | White (SW) | Pewter (DV) | Java (JM) |
| KATKX (Single) | 34.00 | 37.00 | 45.00 | 46.00 | 34.00 | 37.00 | 52.00 |
| KATK (Masterpack) | 24.00 | 27.00 | 35.00 | 35.00 | 24.00 | 34.00 | 44.00 |

- Masterpack contains 5 pieces. List price is a price for each unit.

| Unfinished | |
|-------------------|-------|
| Model | |
| KATKX-UF (Single) | 12.00 |

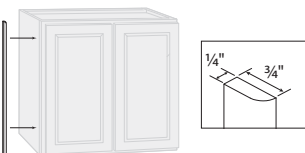
9 1/2" Shoe Trim Molding



| Hamilton | | | | | Andover (Shaker) | | |
|----------------|------------|----------|------------|---------------|------------------|-------------|-----------|
| Model | White (SW) | Oak (MO) | Café (COG) | Hickory (NHK) | White (SW) | Pewter (DV) | Java (JM) |
| KAMTX (Single) | 42.00 | 37.00 | 45.00 | 46.00 | 42.00 | 45.00 | 48.00 |

| Unfinished | |
|-------------------|-------|
| Model | |
| KAMTX-UF (Single) | 25.00 |

9 1/2" Scribe Molding



| Hamilton | | | | | Andover (Shaker) | | |
|-------------------|------------|----------|------------|---------------|------------------|-------------|-----------|
| Model | White (SW) | Oak (MO) | Café (COG) | Hickory (NHK) | White (SW) | Pewter (DV) | Java (JM) |
| KAMSX (Single) | 34.00 | 34.00 | 43.00 | 43.00 | 34.00 | 37.00 | 45.00 |
| KAMS (Masterpack) | 24.00 | 24.00 | 33.00 | 33.00 | 24.00 | 34.00 | 37.00 |

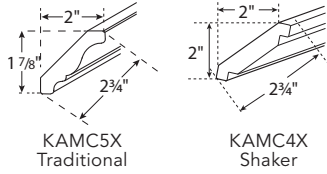
- Masterpack contains 12 pieces. List price is a price for each unit.

| Unfinished | |
|-------------------|-------|
| Model | |
| KAMSX-UF (Single) | 23.00 |

Accessories

All prices shown are list prices

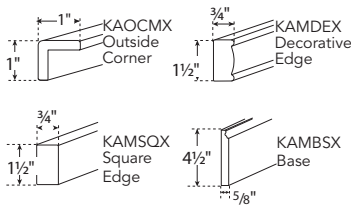
91½" Crown Molding



| Model | Hamilton | | | | Andover (Shaker) | | | Unfinished | |
|--------------------|------------|----------|------------|---------------|------------------|-------------|-----------|--------------------|-------|
| | White (SW) | Oak (MO) | Café (COG) | Hickory (NHK) | White (SW) | Pewter (DV) | Java (JM) | Model | |
| KAMC5X (Single) | 70.00 | 75.00 | 98.00 | 100.00 | N/A | | | KAMC5X-UF (Single) | 53.00 |
| KAMC5 (Masterpack) | 60.00 | 66.00 | 89.00 | 90.00 | N/A | | | | |
| KAMC4X (Single) | N/A | | | | 84.00 | 90.00 | 125.00 | | |
| KAMC4 (Masterpack) | N/A | | | | 76.00 | 81.00 | 122.00 | | |

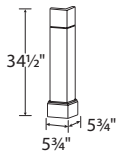
• Masterpack contains 6 pieces. List price is a price for each unit.

91½" Molding



| Model | Hamilton | | | | Andover (Shaker) | | | Unfinished | |
|--------|------------|----------|------------|---------------|------------------|-------------|-----------|--------------------|-------|
| | White (SW) | Oak (MO) | Café (COG) | Hickory (NHK) | White (SW) | Pewter (DV) | Java (JM) | Model | |
| KAMSQX | 76.00 | 77.00 | 82.00 | 84.00 | 76.00 | 81.00 | 86.00 | KAOCMX-UF (Single) | 36.00 |
| KAMBSX | 98.00 | 100.00 | 106.00 | 110.00 | 98.00 | 105.00 | 111.00 | | |
| KAOCMX | 60.00 | 62.00 | 78.00 | 81.00 | 60.00 | 64.00 | 84.00 | | |
| KAMDEX | 76.00 | 77.00 | 82.00 | 84.00 | N/A | 81.00 | N/A | | |

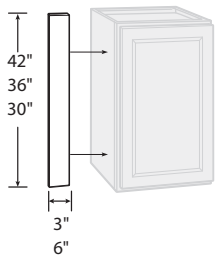
Decorative Corner Post



| Model | Hamilton | | | | Andover (Shaker) | | | Unfinished | |
|--------|------------|----------|------------|---------------|------------------|-------------|-----------|------------|--|
| | White (SW) | Oak (MO) | Café (COG) | Hickory (NHK) | White (SW) | Pewter (DV) | Java (JM) | Model | |
| KADCP6 | 163.00 | 166.00 | 177.00 | 183.00 | 163.00 | 174.00 | 186.00 | N/A | |

• Base profile matches KAMBSX base molding

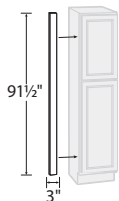
Wall & Base Fillers



| Model | Hamilton | | | | Andover (Shaker) | | | Unfinished | |
|----------------------|------------|----------|------------|---------------|------------------|-------------|-----------|----------------------|-------|
| | White (SW) | Oak (MO) | Café (COG) | Hickory (NHK) | White (SW) | Pewter (DV) | Java (JM) | Model | |
| KAFS330X (Single) | 24.00 | 27.00 | 36.00 | 38.00 | 24.00 | 26.00 | 38.00 | KAFS330X-UF (Single) | 15.00 |
| KAFS330 (Masterpack) | 19.00 | 20.00 | 31.00 | 32.00 | 19.00 | 24.00 | 35.00 | N/A | |
| KAFS336X (Single) | 38.00 | 38.00 | 46.00 | 47.00 | 38.00 | 41.00 | 49.00 | KAFS336X-UF (Single) | 26.00 |
| KAFS342X (Single) | 50.00 | 50.00 | 56.00 | 57.00 | 50.00 | 54.00 | 59.00 | N/A | |
| KAFS630X (Single) | 58.00 | 58.00 | 69.00 | 71.00 | 58.00 | 62.00 | 74.00 | KAFS630X-UF (Single) | 36.00 |
| KAFS636X (Single) | 64.00 | 64.00 | 75.00 | 77.00 | 64.00 | 69.00 | 79.00 | KAFS636X-UF (Single) | 41.00 |
| KAFS642X (Single) | 69.00 | 69.00 | 83.00 | 86.00 | 69.00 | 74.00 | 89.00 | | |

• Masterpack contains 5 pieces. List price is a price for each unit.

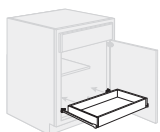
91½" Pantry Filler



| Model | Hamilton | | | | Andover (Shaker) | | | Unfinished | |
|----------------------|------------|----------|------------|---------------|------------------|-------------|-----------|----------------------|-------|
| | White (SW) | Oak (MO) | Café (COG) | Hickory (NHK) | White (SW) | Pewter (DV) | Java (JM) | Model | |
| KAFS396X (Single) | 59.00 | 60.00 | 95.00 | 108.00 | 59.00 | 63.00 | 100.00 | KAFS396X-UF (Single) | 43.00 |
| KAFS396 (Masterpack) | 50.00 | 50.00 | 87.00 | 100.00 | 50.00 | 60.00 | 94.00 | | |

• Masterpack contains 5 pieces. List price is a price for each unit.

Pull Out Drawer



| Model | N/A | Unfinished | |
|-----------|-------|------------|--|
| | | Model | |
| CBKADWR24 | 77.00 | | |
| CBKADWR30 | 82.00 | N/A | |

- Ball-bearing drawer glides
- CBKADWR24 fits in 24" W Base
- CBKADWR30 fits in 30" W Base
- Ready to assemble
- * Maximum of 2 per Cabinet
- * Cabinet Back Panel Pre-drilled for drawer glide installation

Wood Characteristics and Product Care

Wood Characteristics

BEECH: Beech is a strong hardwood resistant to scratching and denting at a higher degree when compared to other softer species. Similar to Maple, Beech has a fine, tight grain and even texture which allows for better and easier staining and finishing.

HICKORY: Hickory is a heavy hardwood which when finished has a warm, appealing appearance. Distinctive color streaks, combined with knots and other noticeable characteristics, make for a rustic appearance. While some parts may be clear and others extremely rustic, the characteristics of hickory are an inherent part of its charm and are considered to be a desirable part of the total look.

MAPLE: Maple is a hardwood that inherently has a characteristic known as "birdseye" or "fiddleback" pattern in the wood. When finished, it can have the appearance of a varied sheen, a splotchy appearance, or satiny look. This is the beauty of real maple and not a defect. In most cases it takes on a very pleasant look. Mineral streaks are also common and may appear darker when stained.

OAK: Oak is an open-grained hardwood with varying patterns ranging from straight grain to wide arcs. When stained, there will be a noticeable difference in the color shades between the open and closed grain areas of the wood. Wood can range from pink to a reddish brown.

WOOD: Wood species in all finishes will exhibit color changes when exposed to different types of light and environments over time. Such color changes are expected in Continental Cabinets brand cabinetry and are not defects. Graining differences, mineral streaks and color variations are expected in wood cabinetry. Continental Cabinets door styles often exhibit these characteristics and such graining differences, mineral streaks and color variations are not defects.

Care and Cleaning

- For normal spills, a damp cloth is sufficient. Remember to dry the surface immediately.
- Thermofoil doors can be cleaned with most general purpose household cleaners.
- Wood doors can be cleaned with most general purpose household cleaners and polished with most furniture care products, not containing wax, petroleum solvents or silicones.
- Do not use caustic agents and/or abrasive scrubbers, or oven cleaners.
- Nicks and dings can be repaired with touch-up kits.
- For stains that persist, flakes of Ivory soap diluted in warm water may be used. Remember to dry the surface immediately.
- Cabinets can be cleaned with a damp sponge or cloth using soapy water, or most general purpose household cleaners. Do not use any abrasive cleaner or scrubbers.
- Do not let liquids stay on the surface for a long period of time. The surface is water resistant, not waterproof.

Warranty Information

Warranty Details

- Finished Cabinetry - Limited Lifetime Warranty applies
- Unfinished Cabinetry - 1 Year Limited Warranty applies

Warranty Coverage: American Woodmark Corporation. ("AWC") warrants its parts and products to be free of substantial defects in materials and workmanship from the original date of purchase under normal home use. This warranty is offered only to the original consumer purchaser and may not be transferred.

What AWC Will Do Under The Warranty: During the warranty period, AWC will repair or replace any part or product that proves to have substantial defects in materials or workmanship, or AWC will provide an equivalent replacement product. In keeping with our policy of continuous product improvement, AWC reserves the right to change specifications in design and materials without notice and with no obligation to retrofit products we previously manufactured.

How State Law Applies: This warranty gives you specific legal rights, and you may also have other rights that vary from state to state.

Implied Warranties: AWC disclaims any implied warranty of merchantability, and there are no warranties that extend beyond the descriptions on the face hereof to the extent that such disclaimer is not valid under applicable law, any implied warranty shall be coextensive in duration with this warranty.

Wood Characteristics, Aging and Printing Limitations: Because of the varying natural characteristics of wood and the effects of aging, product shown in displays and/or printed materials will not be an exact match to new cabinetry you will receive. Depending on the wood characteristics, the age of a sample and the environment of the showroom, samples will show some degree of variation from new product. In addition, you should not expect all doors, drawer fronts, trim or molding to match exactly in either finish or grain. Variation in wood is normal and unavoidable. In addition, it is not possible to exactly match our colors in printed materials. Therefore, you should view the actual samples when making your color selection.

What This Warranty Does Not Cover: This warranty does not cover any problems or damage which result from improper transportation, improper installation, mishandling, misuse, abuse, neglect, abnormal use, commercial use, improper maintenance, non-AWC repairs, accidents, or acts of God, such as hurricanes, fire, earthquakes or floods. This warranty and any applicable implied warranties do not cover incidental or consequential damages arising from any defects in the product, such as labor charges for installation or removal of the product or any associated products. This warranty does not cover defects or damage caused by normal wear & tear, alterations, environmental conditions, humidity absorption, or mold. In addition, variations in wood grain finish color, aging or other natural wood and stain characteristics are not considered defects and are not covered by this warranty. Some states do not allow the exclusion or limitation of incidental or consequential damages, so the above limitation or exclusion may not apply to you.

How to Obtain Warranty Service: If you need replacement parts or would like to make a warranty claim, please contact our Customer Service Representative by mail or telephone Customer Service. All warranty claims must include the model number of the product, copy of the original receipt and the nature of the problem. In addition, AWC may at its discretion require inspection of the installation site or authorize the prepaid return of the claimed defective part. Merchandise not pre-approved for return will not be accepted and the associated claim not accepted. Products should be examined for defects prior to installation. This warranty also does not cover labor charges for installation or removal of the product or any associated products. If upon inspection you find our product has a damaged or missing part, it may not be necessary to return the unit to the Dealer of purchase.



HAMILTON
Café

Continental

CABINETS

GOOD LOOKS AT A GREAT PRICE

www.ContinentalCabinetry.com • 800-229-5840

CBNBK0120