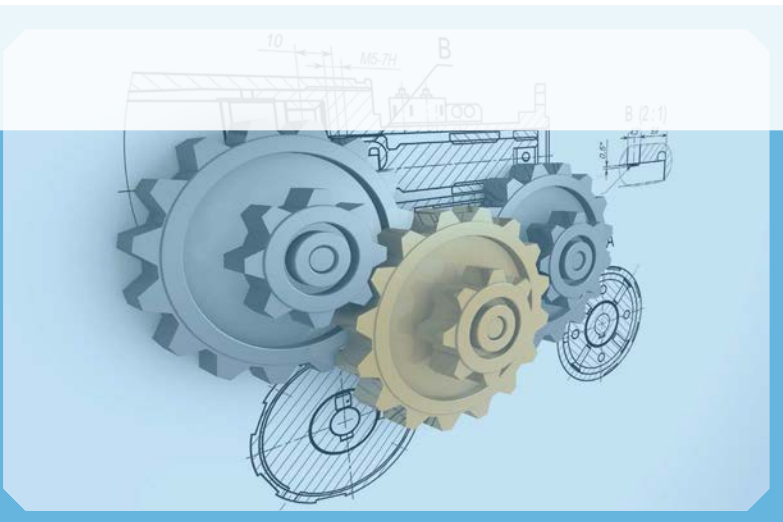




concentric™
INTERNATIONAL

Bringing Component Parts Together





ABOUT CONCENTRIC INTERNATIONAL

Concentric International connects retail, wholesale and original equipment manufacturers (OEM) with the value of global sourcing for products in agricultural, construction, general industry, lawn and garden, professional turf and utility equipment.

Founded in 1983 by John Ruan in Des Moines, Iowa, our staff includes salespeople, engineers, logistics specialists, and technicians, who specialize in our range of products. With our full-service warehouses, centrally located in Des Moines, products can be shipped efficiently to any destination.

Concentric International serves as a single-point-of-contact for our customers. We remove all the barriers and potential headaches from global sourcing. We often integrate fully into our customers' manufacturing and supply networks, creating exceptional visibility and a seamless flow of products and parts. We also partner with customers to overcome their challenges, including continuous product improvement as well as new product engineering, design, development and production.

Concentric International
512 Tuttle Street
Des Moines, Iowa 50309

Toll Free: 800.831.4145
Phone: 515.283.3900
Fax: 515.283.3901
www.concentricintl.com



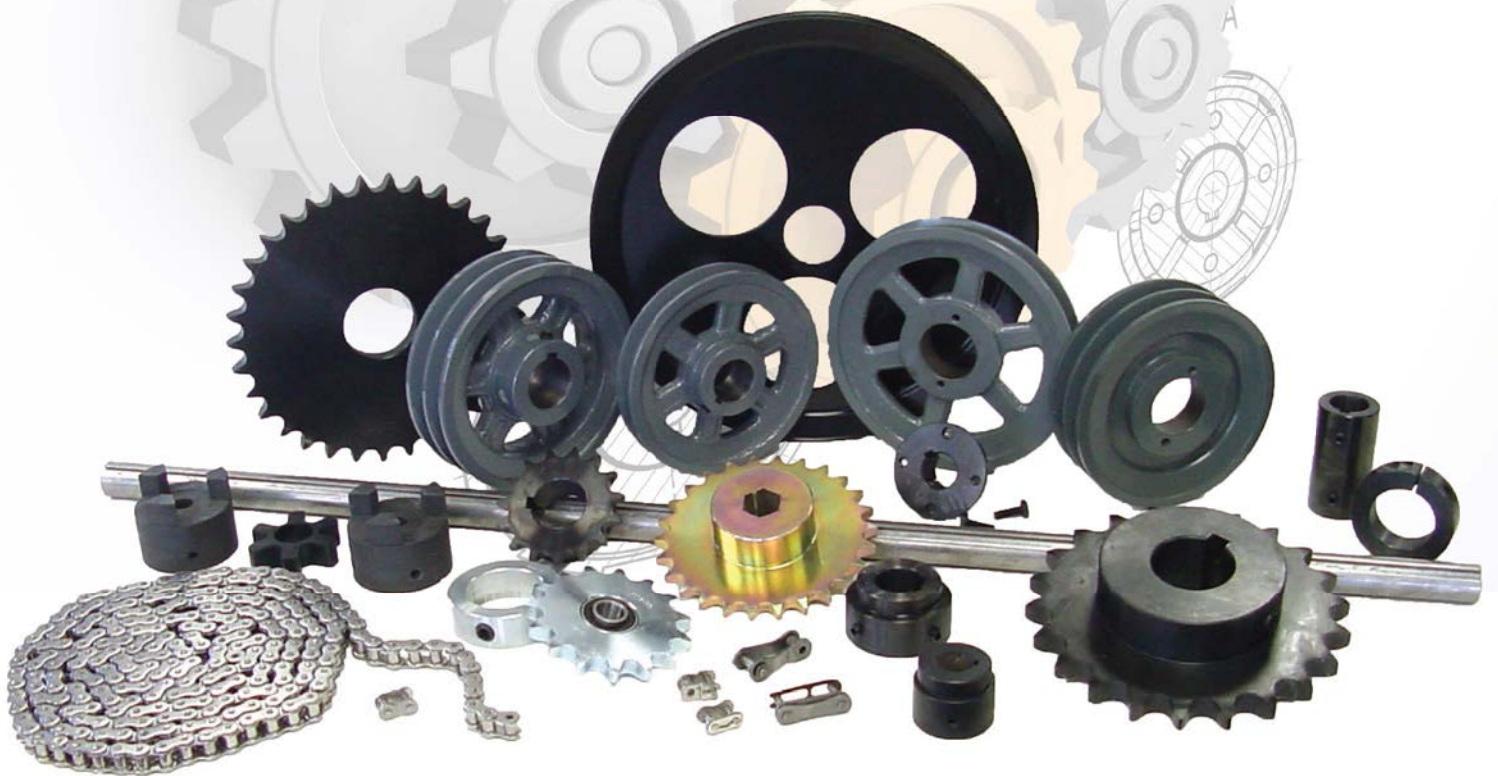
concentric™
INTERNATIONAL

B L A C K
TALON
S E A T S

B L A C K
TALON

G GLIDE**FORCE**

POWER TRANSMISSION SOLUTIONS



POWER TRANSMISSION SOLUTIONS



Power Transmission Solutions, a division of Concentric International, offers an affordable line of stock and 'made-to-order' Power Transmission products. These products are used in a wide variety of industries such as Agricultural, Industrial and Lawn and Garden. We provide OEM's with 'made-to-order' high quality products that are used in planting / sowing equipment, specialized conveying equipment, harvesters and other special-use machines in North America.

Our factories are certified to ISO 9001 standards to ensure our standard and 'made-to-order' Power Transmission parts maintain the consistent quality demanded by OEMs.

Contact our Power Transmission Solutions Team members to discuss specific part designs, applications, needs, and other requirements to meet your OEM needs.



WARRANTY

Concentric International's PTS product line is designed to provide the end user with highly durable, long lasting products, which will perform well in all conditions.

Concentric International guarantees all of its PTS products against defects in material and workmanship. This guarantee does not cover failure due to abuse, or utilization in an application other than what the product was originally designed for.

INDEX

INDEX

SPROCKETS	
#25	5
#35	6
#40	7
#50	8
#60	9
#80	10
SINGLE WELD-ON SPROCKETS	
#40	11
#50	12
#60	13
#80	14
WELD HUBS	15 - 16
ONE PIECE WELD SPLIT PULLEYS	17
DOUBLE PULLEYS	18
IDLERS	19
ROLLERCHAIN	20
SHEAVES	
CAST IRON	21 - 22
BK H SERIES	23
2BK H SERIES	24
3BK BORED TO SIZE	25
3BK H SERIES	26
H SERIES BUSHINGS	27
COUPLINGS + INSERTS	28
SHAFT COUPLERS	29
SHAFT COLLARS	
SOLID	30
SINGLE SPLIT	31
DOUBLE SPLIT	32
KEYED SHAFTING	33
ROLLER CHAIN COUPLINGS	34

STANDARD KEYWAY AND SETSCREW SIZES FOR BORED TO SIZE SPROCKETS

Listed are the standard keyway and setscrew sizes furnished with corresponding bore sizes. These sizes will be furnished when keyway and/or setscrew size is not specified on an order.

If other than standard is required, specify when ordering.

DIMENSIONS (IN INCHES UNLESS OTHERWISE NOTED)

BORE SIZE	KEYWAY WIDTH X DEPTH	SETSCREW
1/2 - 9/16	1/8 X 1/16	10-24
5/8 - 7/8	3/16 X 3/32	1/4
15/16 - 1 1/4	1/4 X 1/8	5/16
1 5/16 - 1 3/8	5/16 X 5/32	5/16
1 7/16 - 1 3/4	3/8 X 3/16	3/8
1 13/16 - 2 1/4	1/2 X 1/4	1/2
2 5/16 - 2 3/4	5/8 X 5/16	5/8
2 13/16 - 3 1/4	3/4 X 3/8	5/8
3 5/16 - 3 3/4	7/8 X 7/16	3/4
3 13/16 - 4 1/2	1 X 1/2	3/4

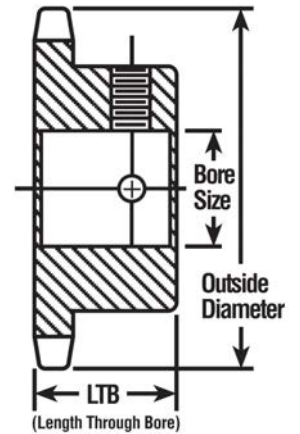
STANDARD BORE TOLERANCES

1" and under	+.001 to .000
1 1/16" to 2"	+.002 to .000
2 1/16" to 3"	+.003 to .000
3 1/16" & up	+.004 to .000

#25 SPROCKETS

Type BS (Bored to Size) Two Setscrews at 90°

- Black Oxide Finish
- Two setscrews at 90°
- Hub sizes vary to suit
Different bore sizes



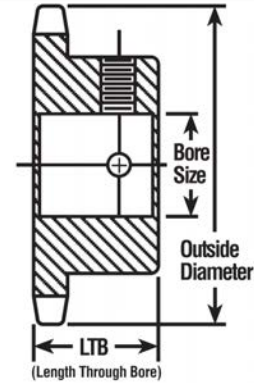
25-1 FOR 1/4" PITCH ANSI CHAIN

Teeth No.	Catalog No.	Outside Dia. (in.)	LTB (in.)	Hub Dia. (in.)	Weight (lbs.)	Finished Bores					
						1/4	5/16	3/8	1/2	5/8	3/4
9	25BS09	0.84	1/2	7/16	0.03	X					
10	25BS10	0.92	1/2	1/2	0.03	X					
11	25BS11	1.00	1/2	9/16	0.04	X	X				
12	25BS12	1.08	1/2	5/8	0.06	X	X	X			
13	25BS13	1.17	1/2	23/32	0.07	X	X	X			
14	25BS14	1.25	1/2	13/16	0.08	X	X	X	X		
15	25BS15	1.33	1/2	57/64	0.10	X	X	X	X		
16	25BS16	1.41	1/2	31/32	0.12	X	X	X	X		
17	25BS17	1.49	1/2	11/32	0.14	X	X	X	X	X	
18	25BS18	1.57	1/2	11/8	0.16	X	X	X	X	X	X
19	25BS19	1.65	1/2	17/32	0.19	X	X	X	X	X	X
20	25BS20	1.73	5/8	19/32	0.25	X	X	X	X	X	X
21	25BS21	1.81	5/8	13/8	0.28	X	X	X	X	X	X
22	25BS22	1.89	5/8	17/16	0.31	X	X	X	X	X	X
23	25BS23	1.97	5/8	11/2	0.32	X	X	X	X	X	X
24	25BS24	2.05	5/8	11/2	0.33			X	X	X	X
25	25BS25	2.13	5/8	11/2	0.34			X	X	X	X
26	25BS26	2.21	5/8	11/2	0.35			X	X	X	X
28	25BS28	2.37	5/8	11/2	0.36			X	X	X	X
30	25BS30	2.53	5/8	11/2	0.38			X	X	X	X
32	25BS32	2.69	5/8	11/2	0.40			X	X	X	X
35	25BS35	2.93	3/4	11/2	0.48			X	X	X	X
36	25BS36	3.01	3/4	11/2	0.50			X	X	X	X
40	25BS40	3.33	3/4	2	0.53				X	X	X
42	25BS42	3.49	3/4	2	0.55				X	X	X
45	25BS45	3.73	3/4	2	0.56				X	X	X
48	25BS48	3.96	3/4	2	0.56				X	X	X
54	25BS54	4.44	3/4	2	1.00				X	X	X
60	25BS60	4.92	3/4	2	1.10				X	X	X
72	25BS72	5.88	3/4	2	1.30				X	X	X

#35 SPROCKETS

Type BS (Bored to Size) Hardened Teeth - 2 Setscrews

- Black Oxide Finish
- Keyway is on center line of tooth
- Setscrews are on keyway and 90°
- Hub sizes vary to suit different bore sizes



35-1 FOR 3/8" PITCH ANSI CHAIN

Teeth No.	Catalog No.	Outside Dia. (in.)	LTB (in.)	Hub Dia. (in.)	Weight (lbs.)	Finished Bores									
						3/8	1/2	5/8	3/4	7/8	1	1 1/8	1 3/16	1 1/4	
10	35BS10H**	1.38	3/4	31/32*	0.14	X**	X	X							
11	35BS11H**	1.50	3/4	1 1/16*	0.17	X**	X	X	X						
12	35BS12H	1.63	3/4	1 7/32*	0.20		X	X	X						
13	35BS13H	1.75	3/4	1 1/4*	0.23		X	X	X						
14	35BS14H	1.87	3/4	1 1/4	0.25		X	X	X						
15	35BS15H	1.99	3/4	1 11/32	0.29		X	X	X	X	X				
16	35BS16H	2.11	3/4	1 15/32	0.35		X	X	X	X	X				
17	35BS17H	2.23	3/4	1 19/32	0.42		X	X	X	X	X				
18	35BS18H	2.35	3/4	1 23/32	0.48		X	X	X	X	X				
19	35BS19H	2.47	3/4	1 27/32	0.54		X	X	X		X				
20	35BS20H	2.59	3/4	1 15/16	0.59		X	X	X		X				
21	35BS21H	2.71	7/8	2	0.79		X	X	X		X				
22	35BS22H	2.83	7/8	2	0.81		X	X	X		X				
23	35BS23H	2.95	7/8	2	0.84		X	X	X		X				
24	35BS24H	3.07	7/8	2	0.94		X	X	X		X				
25	35BS25H	3.19	7/8	2	0.97		X	X	X		X				
26	35BS26H	3.31	7/8	2	0.99			X	X	X	X	X	X	X	X
27	35BS27H	3.43	7/8	2	1.01			X	X	X	X	X	X	X	X
28	35BS28H	3.55	7/8	2	1.06			X	X	X	X	X	X	X	X
29	35BS29H	3.66	7/8	2	1.08			X	X	X	X	X	X	X	X
30	35BS30H	3.79	7/8	2	1.12			X	X	X	X	X	X	X	X
32	35BS32	4.03	7/8	2	1.19			X	X	X	X	X	X	X	X
35	35BS35	4.39	7/8	2 1/4	1.30			X	X	X	X	X	X	X	X
36	35BS36	4.51	7/8	2 1/4	1.34			X	X	X	X	X	X	X	X
40	35BS40	4.99	1	2 1/4	1.87			X	X	X	X	X	X	X	X
42	35BS42	5.23	1	2 1/4	2.05			X	X	X	X	X	X	X	X
45	35BS45	5.59	1	2 1/4	2.20			X	X	X	X	X	X	X	X
48	35BS48	5.95	1	2 1/4	2.31			X	X	X	X	X	X	X	X
54	35BS54	6.66	1	2 1/4	2.42			X	X	X	X	X	X	X	X
60	35BS60	7.38	1	2 1/4	2.86				X	X	X	X	X	X	X
72	35BS72	8.81	1	2 1/4	3.42				X	X	X	X	X	X	X

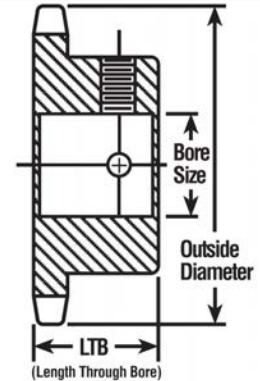
*Has recessed groove in the hub for chain clearance. Maximum bores shown will accommodate the standard keyseat and setscrew over keyseat.

**3/8" Bore, No Keyway, 2 Setscrews at 90° X= Current stock item, other bore requirements are available upon request.

#40 SPROCKETS

Type BS (Bored to Size) Hardened Teeth - 2 Setscrews

- Black Oxide Finish
- Keyway is on center line of tooth
- Setscrews are on keyway and 90°
- Hub sizes vary to suit different bore sizes



40-1 FOR 1/2" PITCH ANSI CHAIN

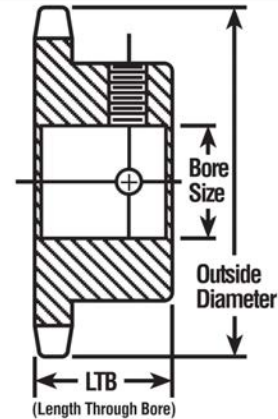
Teeth No.	Catalog No.	Outside Dia. (in.)	LTB (in.)	Hub Dia. (in.)	Weight (lbs.)	Finished Bores										
						1/2	5/8	3/4	7/8	1	1 1/8	1 3/16	1 1/4	1 3/8	1 7/16	1 1/2
10	40BS10H	1.84	7/8	1 1/4*	0.24	X	X	X								
11	40BS11H	2.00	7/8	1 3/8*	0.28	X	X	X	X							
12	40BS12H	2.17	7/8	1 9/16*	0.34	X	X	X	X	X						
13	40BS13H	2.33	7/8	1 9/16	0.45	X	X	X	X	X						
14	40BS14H	2.49	7/8	1 11/16	0.51	X	X	X	X	X	X	X				
15	40BS15H	2.65	7/8	1 13/16	0.53	X	X	X	X	X	X	X	X			
16	40BS16H	2.81	7/8	2	0.66		X	X	X	X	X	X	X			
17	40BS17H	2.98	1	2 1/8	0.88		X	X	X	X	X	X	X			
18	40BS18H	3.14	1	2 5/16	1.03		X	X	X	X	X	X	X	X	X	X
19	40BS19H	3.30	1	2 1/2	1.17		X	X	X	X	X	X	X	X	X	X
20	40BS20H	3.46	1	2 5/8	1.33		X	X	X	X	X	X	X	X	X	X
21	40BS21H	3.62	1	2 3/4	1.53		X	X		X	X	X	X	X	X	X
22	40BS22H	3.78	1	2 7/8	1.66		X	X	X	X	X	X			X	X
23	40BS23H	3.94	1	3	1.92		X	X	X	X		X	X	X	X	X
24	40BS24H	4.10	1	3 1/4	2.10		X	X	X	X	X	X	X	X	X	X
25	40BS25H	4.26	1	3 1/4	2.22			X	X	X	X	X	X			X
26	40BS26H	4.42	1	3 1/4	2.34			X	X	X	X	X	X			X
27	40BS27H	4.58	1	3 1/4	2.42			X	X	X	X	X	X			X
28	40BS28H	4.74	1	3 1/4	2.50			X	X	X	X	X	X			X
29	40BS29H	4.90	1	3 1/4	2.60			X	X	X	X	X	X	X		X
30	40BS30H	5.06	1	3 1/4	2.70			X	X	X	X	X	X			X
32	40BS32H	5.38	1	3 1/4	3.16					X						
33	40BS33H	5.54	1	3 1/4	3.03				X	X						
36	40BS36H	6.02	1	3 1/4	3.39					X			X			
40	40BS40H	6.65	1 1/8	3 1/2	4.28				X	X			X			
42	40BS42H	6.97	1 1/8	3 1/2	4.64								X			
43	40BS43H	7.13	1 1/8	3 1/2	4.80				X							
50	40BS50H	8.25	1 1/8	3 1/2	5.78					X						

*Has recessed groove in the hub for chain clearance. Maximum bores shown will accommodate the standard keyseat and setscrew over keyseat.
X= Current stock item, other bore requirements are available upon request.

#50 SPROCKETS

Type BS (Bored to Size) Hardened Teeth - 2 Setscrews

- Black Oxide Finish
- Keyway is on center line of tooth
- Setscrews are on keyway and 90°
- Hub sizes vary to suit different bore sizes



50-1 FOR 5/8" PITCH ANSI CHAIN

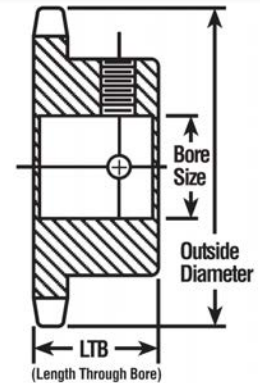
Teeth No.	Catalog No.	Outside Dia. (in.)	LTB (in.)	Hub Dia. (in.)	Weight (lbs.)	Finished Bores															
						5/8	3/4	7/8	1	1 1/8	1 3/16	1 1/4	1 3/8	1 7/16	1 1/2	1 5/8	1 3/4	1 7/8	1 15/16		
09	50BS09H	2.09	1	1 3/8*	0.30		X														
10	50BS10H	2.30	1	1 9/16*	0.30	X	X	X	X												
11	50BS11H	2.50	1	1 3/4*	0.60	X	X	X	X												
12	50BS12H	2.71	1	1 63/64*	0.70	X	X	X	X	X	X	X									
13	50BS13H	2.91	1	1 7/8	0.80	X	X	X	X	X	X	X									
14	50BS14H	3.11	1	2 1/8	1.00	X	X	X	X	X	X	X									
15	50BS15H	3.32	1	2 3/8	1.20	X	X	X	X	X	X	X	X	X							
16	50BS16H	3.52	1	2 1/2	1.45	X	X	X	X	X	X	X	X	X	X						
17	50BS17H	3.72	1	2 11/16	1.60	X	X	X	X	X	X	X	X	X	X	X					
18	50BS18H	3.92	1	2 7/8	1.90	X	X	X	X	X	X	X	X	X	X	X					
19	50BS19H	4.12	1	3	2.00	X	X	X	X	X	X	X	X	X	X	X					
20	50BS20H	4.32	1	3	2.10		X	X	X	X	X	X	X	X	X	X					
21	50BS21H	4.52	1	3	2.25		X	X	X	X	X	X	X	X	X	X					
22	50BS22H	4.72	1	3	2.40		X	X	X	X	X	X	X	X	X	X					
23	50BS23H	4.92	1	3	2.50		X	X	X	X	X	X	X	X	X	X					
24	50BS24H	5.12	1 1/4	3	3.00		X	X	X	X	X	X	X	X	X	X					
25	50BS25H	5.32	1 1/4	3	3.10		X	X	X	X	X	X	X	X	X	X					
26	50BS26H	5.52	1 1/4	3	3.30		X	X	X	X	X	X	X	X	X	X					
27	50BS27H	5.72	1 1/4	3	3.46		X	X	X	X	X	X	X	X	X	X					
28	50BS28H	5.92	1 1/4	3	3.60		X	X	X	X	X	X	X	X	X	X					
29	50BS29H	6.12	1 1/4	3	3.78		X	X	X	X	X	X	X	X	X	X					
30	50BS30H	6.32	1 1/4	3 1/4	3.90		X	X	X	X	X	X	X	X	X	X					
32	50BS32H	6.72	1 1/4	3 1/4	4.70						X										
34	50BS34H	7.12	1 1/4	3 1/4	5.06		X	X	X	X	X	X	X	X	X			X	X		
36	50BS36H	7.52	1 1/4	3 1/4	5.50				X		X	X						X			
40	50BS40H	8.32	1 1/4	3 1/4	6.20		X	X	X	X	X	X	X	X	X			X	X		
45	50BS45H	9.31	1 1/4	3 3/4	8.00						X										

*Has recessed groove in the hub for chain clearance. Maximum bores shown will accommodate the standard keyseat and setscrew over keyseat.
X= Current stock item, other bore requirements are available upon request.

#60 SPROCKETS

Type BS (Bored to Size) Hardened Teeth - 2 Setscrews

- Black Oxide Finish
- Keyway is on center line of tooth
- Setscrews are on keyway and 90°
- Hub sizes vary to suit different bore sizes



60-1 FOR 3/4" PITCH ANSI CHAIN

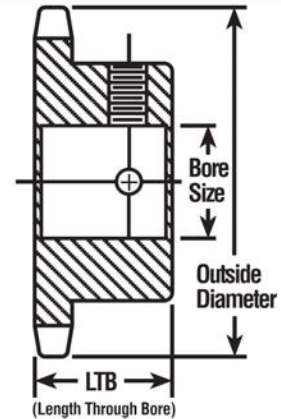
Teeth No.	Catalog No.	Outside Dia. (in.)	LTB (in.)	Hub Dia. (in.)	Weight (lbs.)	Finished Bores																		
						5/8	3/4	7/8	1	1 1/8	1 3/16	1 1/4	1 3/8	1 7/16	1 1/2	1 5/8	1 3/4	1 7/8	1 15/16	2				
10	60BS10H	2.76	1 1/4	1 15/16*	0.70		X	X	X	X	X	X												
11	60BS11H	3.00	1 1/4	2 1/16*	0.90	X	X	X	X	X	X													
12	60BS12H	3.25	1 1/4	2 3/8*	1.30		X	X	X	X	X													
13	60BS13H	3.49	1 1/4	2 11/32	1.30		X	X	X	X	X	X	X	X	X									
14	60BS14H	3.74	1 1/4	2 9/16	1.60		X	X	X	X	X	X	X	X										
15	60BS15H	3.98	1 1/4	2 7/8	1.70		X	X	X	X	X	X	X	X	X	X								
16	60BS16H	4.22	1 1/4	3 1/16	2.10		X	X	X	X	X	X	X	X	X	X	X		X	X				
17	60BS17H	4.46	1 1/4	3 1/4	2.40				X	X	X	X	X	X	X	X	X	X	X					
18	60BS18H	4.70	1 1/4	3 1/2	2.60				X	X	X	X	X	X	X	X	X	X	X	X				
19	60BS19H	4.95	1 1/4	3 1/2	3.40				X	X	X	X	X	X	X	X	X	X	X					
20	60BS20H	5.19	1 1/4	3 7/8	3.90				X	X	X	X	X	X	X	X	X	X	X	X				
21	60BS21H	5.43	1 1/4	4	4.40				X	X	X	X	X	X	X	X	X	X	X					
22	60BS22H	5.67	1 1/4	4	4.70				X	X	X	X		X	X	X	X	X	X	X				
23	60BS23H	5.91	1 1/4	4	5.00				X	X	X	X	X	X	X	X	X	X	X					
24	60BS24H	6.15	1 1/4	4	5.30				X	X	X	X	X	X	X	X	X	X	X	X				
25	60BS25H	6.39	1 1/4	4	5.40					X		X												
26	60BS26H	6.63	1 1/4	4	5.80				X	X	X	X	X	X	X	X	X	X	X	X				
27	60BS27H	6.87	1 1/4	4	6.30				X	X	X	X	X	X	X	X	X	X	X					
28	60BS28H	7.11	1 1/4	4	6.40				X	X	X	X	X	X	X	X	X	X	X	X				
30	60BS30H	7.59	1 1/4	4	7.10				X	X	X	X	X	X	X	X	X	X	X	X				
32	60BS32H	8.07	1 1/4	4	7.80				X	X	X	X	X	X	X	X	X	X	X	X				
34	60BS34H	8.54	1 1/4	4	8.50								X											
35	60BS35H	8.78	1 1/4	4	8.80				X	X	X	X	X	X	X	X	X	X	X	X				
38	60BS38H	9.50	1 1/4	4 1/4	10.50									X		X								
40	60BS40H	9.98	1 1/4	4 1/4	11.50									X										
42	60BS42H	10.46	1 1/4	4 1/4	12.74									X										
43	60BS43H	10.70	1 1/4	4 1/4	13.00									X										
45	60BS45H	11.18	1 1/4	4 1/4	13.80									X		X								
46	60BS46H	11.42	1 1/4	4 1/4	14.10									X										

*Has recessed groove in the hub for chain clearance. Maximum bores shown will accommodate the standard keyseat and setscrew over keyseat.
X= Current stock item, other bore requirements are available upon request.

#80 SPROCKETS

Type BS (Bored to Size) Hardened Teeth - 2 Setscrews

- Black Oxide Finish
- Keyway is on center line of tooth
- Setscrews are on keyway and 90°
- Hub sizes vary to suit different bore sizes



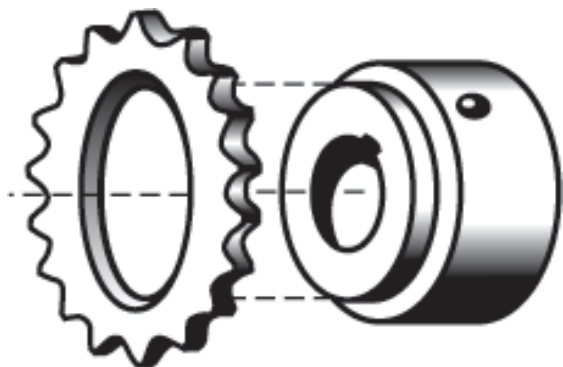
80-1 FOR 1" PITCH ANSI CHAIN

Teeth No.	Catalog No.	Outside Dia. (in.)	LTB (in.)	Hub Dia. (in.)	Weight (lbs.)	Finished Bores										
						1	1/8	1 3/16	1/4	3/8	1/2	5/8	3/4	7/8	15/16	
10	80BS10H	3.68	1 5/8	2 9/16*	1.70	X	X	X	X			X				
11	80BS11H	4.01	1 5/8	2 13/16*	1.80	X	X	X	X		X	X				
12	80BS12H	4.33	1 5/8	3 1/8*	3.00	X	X	X	X	X	X	X		X		
13	80BS13H	4.66	1 1/2	3	3.50	X	X	X	X	X	X	X		X		
14	80BS14H	4.98	1 1/2	3 1/4	4.10	X		X	X	X	X	X		X		
15	80BS15H	5.30	1 1/2	3 13/16	5.20	X	X	X	X	X	X	X	X	X		
16	80BS16H	5.63	1 1/2	4	5.50	X	X	X	X	X	X	X	X	X		
17	80BS17H	5.95	1 1/2	4	6.00	X	X	X	X	X	X	X	X	X	X	X
18	80BS18H	6.27	1 1/2	4 1/4	6.50	X	X	X	X	X	X	X	X	X	X	X
19	80BS19H	6.59	1 1/2	4 1/4	7.00	X	X	X	X	X	X	X	X	X	X	X
20	80BS20H	6.91	1 1/2	4 1/4	8.00	X	X	X	X	X	X	X	X	X	X	X
21	80BS21H	7.24	1 3/4	4 1/4	8.90						X					
22	80BS22H	7.56	1 3/4	4 1/4	9.50	X	X	X	X	X	X	X	X	X	X	X
30	80BS30H	10.11	2	4 3/4	16.70				X							
32	80BS32H	10.75	2	4 3/4	18.80											
36	80BS36H	12.03	2	4 3/4	22.40				X							

*Has recessed groove in the hub for chain clearance. Maximum bores shown will accommodate the standard keyseat and setscrew over keyseat.

X= Current stock item, other bore requirements are available upon request.

#40 SINGLE WELD-ON SPROCKETS

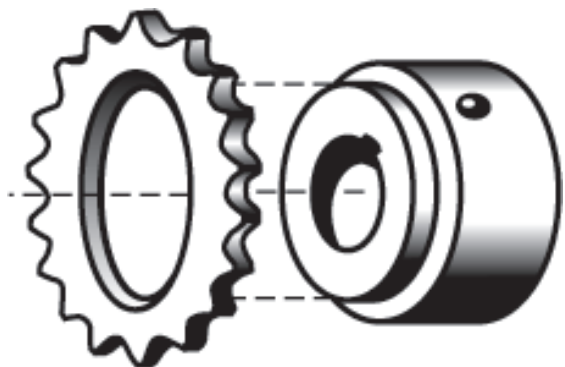


BLACK OXIDE FINISH

40-1 FOR 1/2" PITCH ANSI CHAIN

Teeth	Part Number	Hub Used	Sprocket Bore (in.)	Approx. Weight	Teeth	Part Number	Hub Used	Sprocket Bore (in.)	Approx. Weight
11	40V11	V	1 1/8	0.16	32	40X32	X	2	1.13
12	40V12	V	1 1/8	0.19	33	40X33	X	2	1.20
13	40V13	V	1 1/8	0.19	34	40X34	X	2	1.28
14	40V14	V	1 1/8	0.19	35	40X35	X	2	1.38
15	40V15	V	1 1/8	0.25	36	40X36	X	2	1.50
16	40W16	W	1 5/8	0.19	38	40X38	X	2	1.74
17	40W17	W	1 5/8	0.25	39	40X39	X	2	1.86
18	40W18	W	1 5/8	0.32	40	40X40	X	2	2.00
19	40W19	W	1 5/8	0.32	41	40X41	X	2	2.11
20	40X20	X	2	0.32	42	40X42	X	2	2.22
21	40X21	X	2	0.38	43	40X43	X	2	2.33
22	40X22	X	2	0.44	44	40X44	X	2	2.44
23	40X23	X	2	0.50	45	40X45	X	2	2.56
24	40X24	X	2	0.56	46	40X46	X	2	2.70
25	40X25	X	2	0.62	48	40X48	X	2	3.06
26	40X26	X	2	0.69	50	40X50	X	2	3.50
27	40X27	X	2	0.78	54	40X54	X	2	4.14
28	40X28	X	2	0.88	60	40X60	X	2	5.50
29	40X29	X	2	0.94	72	40X72	X	2	8.10
30	40X30	X	2	1.00					
31	40X31	X	2	1.06					

#50 SINGLE WELD-ON SPROCKETS

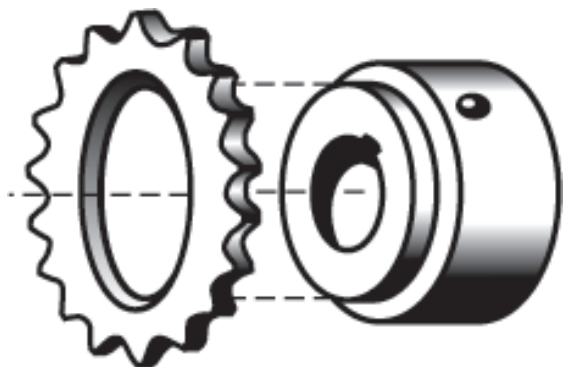


BLACK OXIDE FINISH

50-1 FOR 5/8" PITCH ANSI CHAIN

Teeth	Part Number	Hub Used	Sprocket Bore (in.)	Approx. Weight	Teeth	Part Number	Hub Used	Sprocket Bore (in.)	Approx. Weight
9	50V09	V	1 1/8	0.16	31	50X31	X	2	2.28
10	50V10	V	1 1/8	0.19	32	50X32	X	2	2.38
11	50V11	V	1 1/8	0.19	33	50X33	X	2	2.54
12	50W12	W	1 5/8	0.22	34	50X34	X	2	2.75
13	50W13	W	1 5/8	0.25	35	50X35	X	2	3.00
14	50W14	W	1 5/8	0.32	36	50X36	X	2	3.25
15	50W15	W	1 5/8	0.44	37	50X37	X	2	3.32
16	50W16	W	1 5/8	0.50	38	50X38	X	2	3.38
17	50X17	X	2	0.50	39	50X39	X	2	3.63
18	50X18	X	2	0.56	40	50X40	X	2	3.88
19	50X19	X	2	0.69	41	50X41	X	2	4.40
20	50X20	X	2	0.75	42	50X42	X	2	4.80
21	50X21	X	2	0.88	43	50X43	X	2	5.20
22	50X22	X	2	1.00	44	50X44	X	2	5.30
23	50X23	X	2	1.14	45	50X45	X	2	5.60
24	50X24	X	2	1.25	46	50X46	X	2	5.70
25	50X25	X	2	1.38	48	50X48	X	2	6.30
26	50X26	X	2	1.63	50	50X50	X	2	7.10
27	50X27	X	2	1.73	52	50X52	X	2	7.80
28	50X28	X	2	1.83	54	50X54	X	2	8.10
29	50X29	X	2	2.06	60	50X60	X	2	10.50
30	50X30	X	2	2.19	72	50X72	X	2	15.50

#60 SINGLE WELD-ON SPROCKETS

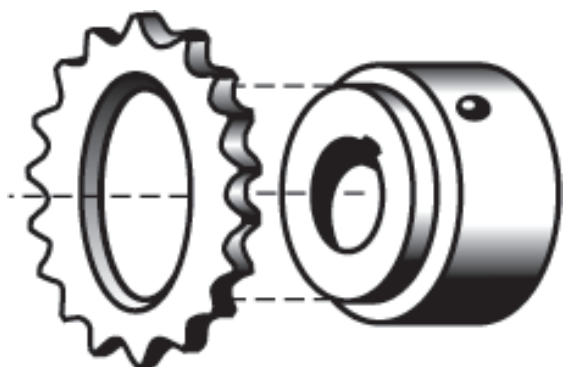


BLACK OXIDE FINISH

60-1 FOR 3/4" PITCH ANSI CHAIN

Teeth	Part Number	Hub Used	Sprocket Bore (in.)	Approx. Weight	Teeth	Part Number	Hub Used	Sprocket Bore (in.)	Approx. Weight
9	60V09	V	1 1/8	0.32	29	60X29	X	2	4.10
10	60V10	V	1 1/8	0.38	30	60X30	X	2	4.50
11	60W11	W	1 5/8	0.38	31	60X31	X	2	4.85
12	60W12	W	1 5/8	0.44	32	60X32	X	2	5.13
13	60W13	W	1 5/8	0.63	33	60X33	X	2	5.44
14	60W14	W	1 5/8	0.75	34	60X34	X	2	5.80
15	60X15	X	2	0.75	35	60X35	X	2	6.19
16	60X16	X	2	0.94	36	60X36	X	2	6.50
17	60X17	X	2	1.19	37	60X37	X	2	7.10
18	60X18	X	2	1.32	38	60X38	X	2	7.50
19	60X19	X	2	1.50	39	60X39	X	2	7.75
20	60X20	X	2	1.63	40	60X40	X	2	8.25
21	60X21	X	2	2.00	41	60X41	X	2	8.60
22	60X22	X	2	2.25	42	60X42	X	2	9.13
23	60X23	X	2	2.50	43	60X43	X	2	9.50
24	60X24	X	2	2.75	44	60X44	X	2	10.00
25	60X25	X	2	2.95	45	60X45	X	2	10.90
26	60X26	X	2	3.25	46	60X46	X	2	11.80
27	60X27	X	2	3.56	48	60X48	X	2	12.20
28	60X28	X	2	3.75	50	60x50	X	2	13.10
					54	60x54	X	2	15.60
					60	60x60	X	2	18.80

#80 SINGLE WELD-ON SPROCKETS

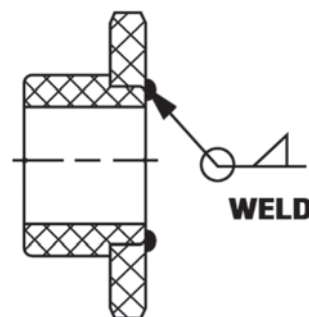


BLACK OXIDE FINISH

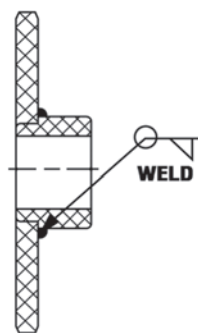
80-1 FOR 1" PITCH ANSI CHAIN

Teeth	Part Number	Hub Used	Sprocket Bore (in.)	Approx. Weight
9	80W09	W	1 5/8	0.50
10	80W10	W	1 5/8	0.70
11	80W11	W	1 5/8	0.90
12	80X12	X	2	1.20
13	80X13	X	2	1.50
14	80X14	X	2	1.80
15	80X15	X	2	2.30
16	80X16	X	2	2.50
17	80X17	X	2	3.00
18	80X18	X	2	3.50
19	80X19	X	2	3.80
20	80X20	X	2	4.30
21	80X21	X	2	4.70
22	80X22	X	2	5.20
23	80X23	X	2	6.00
24	80X24	X	2	6.30
25	80X25	X	2	7.20
26	80X26	X	2	7.80
27	80X27	X	2	8.20
28	80X28	X	2	9.20
29	80X29	X	2	9.90
30	80X30	X	2	10.80

Weld smaller sprockets so it will not interfere with chain.

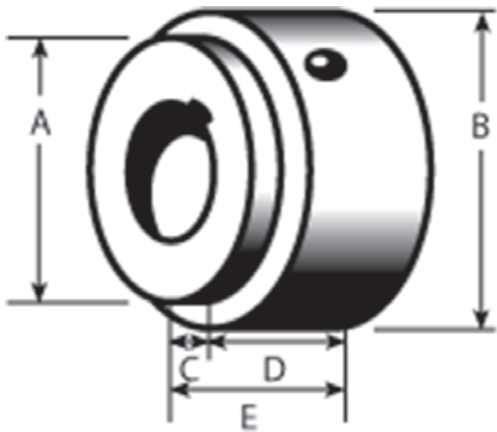


Low hydrogen electrodes should be used for welding plate sprocket to hubs.



Weld larger sprockets as shown.

WELD HUBS



**BLACK
OXIDE
FINISH**

V-Series Hubs	W-Series Hubs	X-Series Hubs
---------------	---------------	---------------

DIMENSIONS	DIMENSIONS	DIMENSIONS
A -- 1 1/8	A -- 1 5/8	A -- 2
B -- 1 7/16	B -- 1 13/16	B -- 2 1/2
C -- 7/16	C -- 7/16	C -- 7/16
D -- 3/4	D -- 1	D -- 1
E -- 1 3/16	E -- 1 7/16	E -- 1 7/16

To Fit V Type
Sprockets &
Pulleys

To Fit W Type
Sprockets &
Pulleys

To Fit X Type
Sprockets

V Series Hubs

Part Number	Bore Round Size (in.)	Approx. Weight
V7/16 PB*	7/16	0.39
V1/2	1/2	0.38
V9/16	9/16	0.38
V5/8	5/8	0.38
V11/16	11/16	0.32
V3/4	3/4	0.32
V13/16	13/16	0.25
V7/8	7/8	0.25

*Plain Bore No Keyway No Setscrews

W Series Hubs

Part Number	Bore Round Size (in.)	Approx. Weight
W 1/2	1/2	0.88
W 9/16	9/16	0.88
W 5/8	5/8	0.83
W 11/16	11/16	0.83
W 3/4	3/4	0.83
W 13/16	13/16	0.75
W 7/8	7/8	0.75
W 15/16	15/16	0.69
W 1	1	0.63
W 1 1/16	1 1/16	0.63
W 1 1/8	1 1/8	0.57
W 1 3/16	1 3/16	0.50
W 1 1/4	1 1/4	0.44

X Series Hubs

Part Number	Bore Round Size (in.)	Approx. Weight
X 5/8	5/8	1.63
X 11/16	11/16	1.63
X 3/4	3/4	1.56
X 13/16	13/16	1.56
X 7/8	7/8	1.50
X 15/16	15/16	1.38
X 1	1	1.38
X 1 1/16	1 1/16	1.38
X 1 1/8	1 1/8	1.38
X 1 3/16	1 3/16	1.25
X 1 1/4	1 1/4	1.25
X 1 5/16	1 5/16	1.19
X 1 3/8	1 3/8	1.13
X 1 7/16	1 7/16	1.13
X 1 1/2	1 1/2	1.06

WELD HUBS

Spline Bore Hub with Setscrew

Part Number	Hub Series	Bore Size (in.) X No. of Splines	Approx. Weight
W 1 1/8 SP6	W	1 1/8 x 6	0.54
W 1 1/4 SP6	W	1 1/4 x 6	0.44
W 1 3/8 SP6	W	1 3/8 x 6	0.38
W 1 3/8 SP21	W	1 3/8 x 21	0.36
X 1 SP6	X	1 x 6	1.38
X 1 1/8 SP6	X	1 1/8 x 6	1.35
X 1 3/8 SP6	X	1 3/8 x 6	1.12
X 1 3/8 SP21	X	1 3/8 x 21	1.10



Hex Bore Hub With Setscrew

Part Number	Hub Series	Bore Hex Size (in.)	Approx. Weight
W 9/16 HX	W	9/16	0.88
W 5/8 HX	W	5/8	0.83
W 3/4 HX	W	3/4	0.80
W 7/8 HX	W	7/8	0.75
W 1 HX	W	1	0.63
W 1 1/8 HX	W	1 1/8	0.57
W 1 1/4 HX	W	1 1/4	0.44
X 9/16 HX	X	9/16	1.70
X 5/8 HX	X	5/8	1.63
X 3/4 HX	X	3/4	1.56
X 7/8 HX	X	7/8	1.50
X 1 HX	X	1	1.38
X 1 1/8 HX	X	1 1/8	1.32
X 1 1/4 HX	X	1 1/4	1.25



Square Bore Hub With Setscrew

Part Number	Hub Series	Bore Square Size (in.)	Approx. Weight
W 1 SQ	W	1	0.63
X 1 SQ	X	1	1.32
X 1 1/8 SQ	X	1 1/8	1.25
X 1 1/4 SQ	X	1 1/4	1.18



BLACK OXIDE FINISH

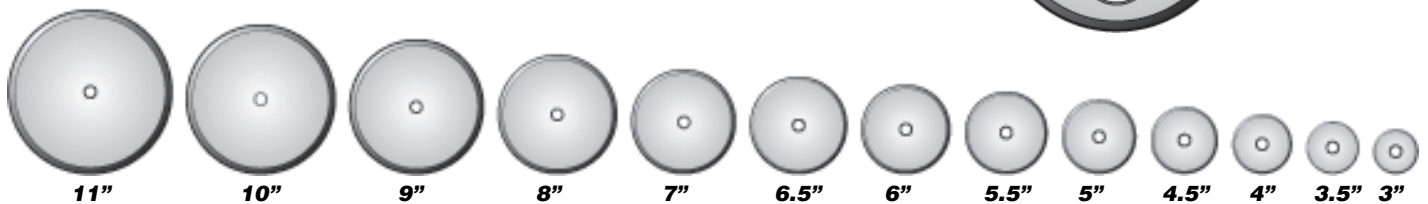
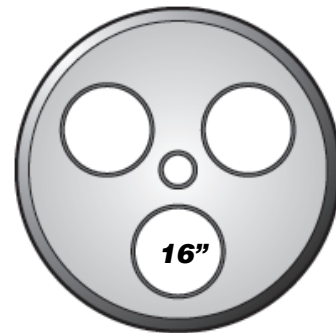
ONE-PIECE WELD-ON SPLIT PULLEYS

SPECS

Part Number	Belt Width	Hub Used	Pulley O.D. (in.)	Approx. Weight
VO300S	A & B	V	3	0.30
VO350S	A & B	V	3 1/2	0.45
W0350S	A & B	W	3 1/2	0.44
W0450S	A & B	W	4 1/2	0.70
W0500S	A & B	W	5	0.85
W0550S	A & B	W	5 1/2	1.05
W0600S	A & B	W	6	1.25
W0650S	A & B	W	6 1/2	1.50
W0700S	A & B	W	7	1.75
W0800S	A & B	W	8	2.25
W0900S	A & B	W	9	2.85
W1000S	A & B	W	10	3.55
W1100S	A & B	W	11	4.25
W1200S	A & B	W	12	3.95
W1400S	A & B	W	14	5.50
W1600S	A & B	W	16	6.65
X1000S	A & B	X	10	3.50
X1200S	A & B	X	12	3.90
X1400S	A & B	X	14	5.40
X1600S	A & B	X	16	6.60

- Split Pulleys - Factory Balanced
- Powder Coated to Prevent Rust
- 12", 14" & 16" Pulleys Include Weight Relieved Holes
- Heavy Material For Rugged Performance
- Pulleys Meet ANSI Specifications

Pulley & Hub Assemblies Available By Special Order



DOUBLE PULLEY HUBS

SPECS

Part Number	Bore Size	Key Way	Set Screws	Approx. Weight
DPH 0075	3/4"	3/16"x 3/32"	2"x 1/4"-20	1.21 Lbs
DPH 0875	7/8"	3/16"x 3/32"	2"x 1/4"-20	1.11 Lbs
DPH 1000	1"	1/4"x 1/8"	2"x 5/16"-18	.99 Lbs
DPH 1125	1 1/8"	1/4"x 1/8"	2"x 5/16"-18	.85 Lbs
DPH 1250	1 1/4"	1/4"x 1/8"	2"x 5/16"-18	.70 Lbs
DPH1250-X	1 1/4"	1/4"x 1/8"	2"x 5/16"-18	1.7 Lbs
DPH1375-X	1 3/8"	5/16"x 5/32	2"x 3/8"-16	1.5 Lbs
DPH1500-X	1 1/2"	3/8"x 3/16	3"x 3/8"-16	1.3 Lbs

The Double Pulley Hubs are designed to eliminate any special fixtures for pulley alignment and positioning.

Assembly in 3 Easy Steps

1. Clamp one pulley flush against the shoulder of the Double Pulley Hub and weld both together.
2. Slide the second pulley onto the machined step.
3. Clamp so that it is tight against the first pulley and weld the pulley to the hub on the machined step.

BLACK OXIDE FINISH



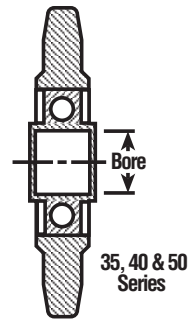
IDLERS

IDLERS with Hardened Teeth

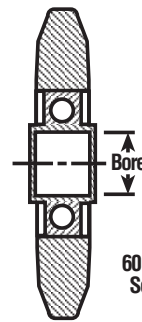
Part Number	Description	Approx. Weight
IS3518-12	#35 Sprocket 18 Teeth 1/2" Bore	0.25
IS3518-58	#35 Sprocket 18 Teeth 5/8" Bore	0.20
IS4015-58	#40 Sprocket 15 Teeth 5/8" Bore	0.40
IS4014-12	#40 Sprocket 15 Teeth 1/2" Bore	0.40
IS4017-12	#40 Sprocket 17 Teeth 1/2" Bore	0.44
IS4017-58	#40 Sprocket 17 Teeth 5/8" Bore	0.40
IS4018-58	#40 Sprocket 18 Teeth 5/8" Bore	0.48
IS5013-12	#50 Sprocket 13 Teeth 1/2" Bore	0.38
IS5013-58	#50 Sprocket 13 Teeth 5/8" Bore	0.34
IS5015-12	#50 Sprocket 15 Teeth 1/2" Bore	0.56
IS5015-58	#50 Sprocket 15 Teeth 5/8" Bore	0.51
IS5017-12	#50 Sprocket 17 Teeth 1/2" Bore	0.69
IS5017-58	#50 Sprocket 17 Teeth 5/8" Bore	0.64
IS6011-12	#60 Sprocket 11 Teeth 1/2" Bore	0.50
IS6011-58	#60 Sprocket 11 Teeth 5/8" Bore	0.45
IS6013-12	#60 Sprocket 13 Teeth 1/2" Bore	0.69
IS6013-58	#60 Sprocket 13 Teeth 5/8" Bore	0.65
IS6015-12	#60 Sprocket 15 Teeth 1/2" Bore	0.94
IS6015-58	#60 Sprocket 15 Teeth 5/8" Bore	0.89
IS8011-34	#80 Sprocket 11 Teeth 3/4" Bore	1.06
IS8012-34	#80 Sprocket 12 Teeth 3/4" Bore	1.70
IS8012-1	#80 Sprocket 12 Teeth 1" Bore	1.60

Note: Stock Idlers are in the process of changing the finish to Black Oxide. To deplete our old stock some idlers still have Clear Zinc finish. The new preferred finish will be Black Oxide finish.

Part Number	Bore Size	Outside Dia.	Step Dia.
WIH-12	1/2"	1 13/16"	15/8"
WIH-58	5/8"	1 13/16"	15/8"
XIH-12	1/2"	2 1/4"	2"
XIH-58	5/8"	2 1/4"	2"



35, 40 & 50 Series



60 & 80 Series



Weld-on Idler Hubs

Bearings have extended inner race. The Weld-on Idler Hubs can be used with our Weld-on Sprockets and our one-piece Weld-on Split Steel Pulleys.

Installation

Instructions

Simply clamp the Idler Hub and corresponding part together and stitch weld around the outside diameter of the Idler Hub. Use low hydrogen electrodes. Three or four stitches 5/8" long will be sufficient. Care must be taken to make sure the welding ground circuit does not pass through the Idler Bearing. Excessive welding to this product will cause heat that may distort or damage the bearing.

ROLLER CHAIN

SPECS

ANSI Chain No.	Pitch P	Roller Diameter B max	Width Between Inner Plates W min	Pin Diameter D max	Pin Length L max	Inner Plate Depth H max	Plate Thickness T max	Tensile Strength Lbs min	Weight Per Foot Lbs/Ft.
----------------	---------	-----------------------	----------------------------------	--------------------	------------------	-------------------------	-----------------------	--------------------------	-------------------------

SINGLE STRAND ROLLER CHAIN

*25	.250	.130	.125	.090	.311	.236	.031	795	.10
*35	.375	.200	.187	.141	.488	.354	.051	1795	.21
41	.500	.305	.246	.141	.541	.390	.051	1516	.25
40	.500	.312	.309	.156	.654	.472	.059	3205	.42
50	.625	.400	.370	.200	.815	.594	.080	5045	.69
60	.750	.469	.494	.234	1.019	.709	.095	7227	1.00
80	1.000	.625	.620	.312	1.287	.945	.128	12886	1.71

DOUBLE PITCH CHAIN

2040	1.000	.312	.309	.156	.654	.472	.059	3205	.28
C2040	1.000	.312	.309	.156	.654	.472	.059	3205	.33
2050	1.250	.400	.370	.200	.815	.590	.080	5045	.49
C2050	1.250	.400	.370	.200	.815	.590	.080	5045	.52
2060	1.500	.469	.494	.234	1.019	.709	.095	7227	.68
C2060	1.500	.469	.494	.234	1.019	.709	.095	7227	.75
2080	2.000	.625	.620	.312	1.287	.945	.128	12886	1.13

STAINLESS STEEL

40	.500	.312	.309	.156	.654	.472	.059	2182	.42
50	.625	.400	.370	.200	.815	.594	.080	3455	.69
60	.750	.469	.494	.234	1.019	.709	.095	4932	1.00

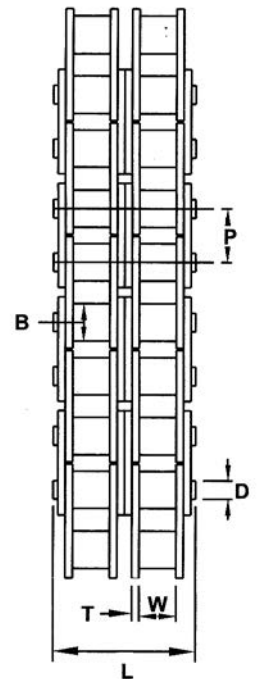
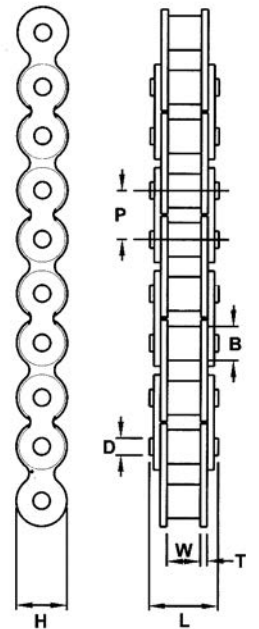
HEAVY ROLLER CHAIN

50H	.625	.400	.370	.200	.870	.594	.095	7500	.83
60H	.750	.469	.494	.234	1.149	.709	.128	8500	1.25
80H	1.000	.625	.620	.312	1.425	.945	.157	14500	2.07

DOUBLE ROLLER CHAIN

40-2	.500	.312	.309	.156	1.220	.472	.059	6409	.75
50-2	.625	.400	.370	.200	1.531	.594	.080	10091	1.33
60-2	.750	.469	.494	.234	1.921	.709	.095	14455	1.95

Standard		Heavy		Double		Extended Pitch		Stainless Steel	
10' Boxes	Reel-length	10' Boxes	Reel-length	10' Boxes	10' Boxes	Reel-length	10' Boxes	Reel-length	
RC25B	RC25-250	RC50BH		RC40-2B	RC2040B	RC2040-100	RC40B-SS	RC40-SS-100	
RC35B	RC35-250	RC60BH	RC60H-100	RC50-2B	RC2050B	RC2050-100	RC50B-SS	RC50-SS-100	
RC41B	RC41-250	RC80BH	RC80H-50	RC60-2B	RC2060B	RC2060-100	RC60B-SS	RC60-SS-100	
RC40B	RC40-100				RC2080B				
RC50B	RC50-100				RCC2040B				
RC60B	RC60-100				RCC2050B				
RC80B	RC80-50				RCC2060B				



*Items listed are standard stock items. Contact us for additional sizes or lengths.

CAST IRON SHEAVES

**FOR 4L OR A BELTS
& 5L OR B BELTS**

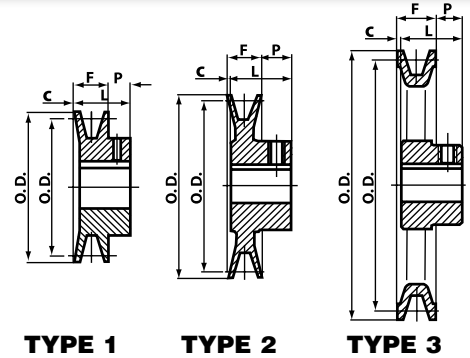


Bore Range

1/2"
5/8" to 7/8"
15/16" to 1 1/4"
1 7/16"

Keyseat

None
3/16" x 3/32"
1/4" x 1/8"
3/8" x 3/16"



TYPE 1

TYPE 2

TYPE 3

PAINTED FINISH

SINGLE GROOVE SHEAVES - FINISHED BORE

Part No.	Diameters			Type	Stock Bores Marked "X"											Dimensions				Wt. Lbs.
	Outside	Datum "A"	Datum "B"		1/2"	5/8"	3/4"	7/8"	15/16"	1"	1 1/8"	1 3/16"	1 1/4"	1 3/8"	1 7/16"	F	L	P	C	
BK24*	2.40"	1.80"	2.20"	1	X	X	X	-	-	-	-	-	-	-	-	13/16"	1 1/16"	13/32"	5/32"	.4
BK25*	2.50"	1.90"	2.30"	1	X	X	X	X	-	-	-	-	-	-	-	13/16"	1 1/16"	13/32"	5/32"	.5
BK26*	2.60"	2.00"	2.40"	1	X	X	X	X	-	-	-	-	-	-	-	13/16"	1 1/16"	13/32"	5/32"	.6
BK27*	2.70"	2.10"	2.50"	2	X	X	X	X	-	-	-	-	-	-	-	13/16"	1 1/16"	13/32"	5/32"	.6
BK28*	2.95"	2.20"	2.60"	2	X	X	X	X	-	-	-	-	-	-	-	13/16"	1 1/16"	13/32"	5/32"	.8
BK30*	3.15"	2.40"	2.80"	2	X	X	X	X	-	-	-	-	-	-	-	13/16"	1 1/16"	13/32"	5/32"	.8
BK32*	3.35"	2.60"	3.00"	2	X	X	X	X	-	-	-	-	-	-	-	13/16"	1 1/16"	13/32"	5/32"	.8
BK34	3.55"	2.80"	3.20"	2	X	X	X	X	-	X	X	-	-	-	-	7/8"	1 5/32"	13/32"	1/8"	1.3
BK36	3.75"	3.00"	3.40"	2	X	X	X	X	-	X	X	-	-	-	-	7/8"	1 5/32"	13/32"	1/8"	1.5
BK40	3.95"	3.20"	3.60"	2	X	X	X	X	-	X	X	-	-	-	-	7/8"	1 5/32"	13/32"	1/8"	1.5
BK45	4.25"	3.50"	3.90"	2	X	X	X	X	-	X	X	-	-	-	-	7/8"	1 5/32"	13/32"	1/8"	1.8
BK47	4.45"	3.70"	4.10"	2	X	X	X	X	-	X	X	-	-	-	-	7/8"	1 5/32"	13/32"	1/8"	1.9
BK50	4.75"	4.00"	4.40"	3	X	X	X	X	X	X	X	-	-	-	-	7/8"	1 5/32"	13/32"	1/8"	2.0
BK52	4.95"	4.20"	4.60"	3	X	X	X	X	-	X	X	-	-	-	-	7/8"	1 5/32"	13/32"	1/8"	2.0
BK55	5.25"	4.50"	4.90"	3	X	X	X	X	-	X	X	X	-	-	-	7/8"	1 5/32"	13/32"	1/8"	2.2
BK57	5.45"	4.70"	5.10"	3	-	X	X	X	X	X	X	-	-	-	-	7/8"	1 5/32"	13/32"	1/8"	2.3
BK60	5.75"	5.00"	5.40"	3	X	X	X	X	-	X	X	X	-	-	-	7/8"	1 5/32"	13/32"	1/8"	2.3
BK62	5.95"	5.20"	5.60"	3	X	X	X	X	X	X	X	X	-	-	-	7/8"	1 5/32"	13/32"	1/8"	2.4
BK65	6.25"	5.50"	5.90"	3	-	X	X	-	-	X	X	-	-	-	-	7/8"	1 5/32"	13/32"	1/8"	2.7
BK67	6.45"	5.70"	6.10"	3	-	X	X	-	-	X	X	-	-	-	-	7/8"	1 5/32"	13/32"	1/8"	2.8
BK70	6.75"	6.00"	6.40"	3	-	X	X	-	X	X	X	X	-	-	X	7/8"	1 15/32"	21/32"	1/16"	3.3
BK72	6.95"	6.20"	6.60"	3	-	-	X	-	-	X	X	-	-	X	-	7/8"	1 15/32"	21/32"	1/16"	3.9
BK75	7.25"	6.50"	6.90"	3	-	-	X	-	-	X	X	-	-	X	-	7/8"	1 15/32"	21/32"	1/16"	3.9
BK77	7.45"	6.70"	7.10"	3	-	-	X	-	-	X	X	-	-	X	-	7/8"	1 15/32"	21/32"	1/16"	4.1
BK80	7.75"	7.00"	7.40"	3	-	X	X	X	-	X	X	X	X	X	X	7/8"	1 15/32"	21/32"	1/16"	4.4
BK85	8.25"	7.50"	7.90"	3	-	-	X	X	-	X	X	-	-	X	X	7/8"	1 15/32"	21/32"	1/16"	5.0
BK90	8.75"	8.00"	8.40"	3	-	-	X	-	X	X	X	X	-	X	X	7/8"	1 15/32"	21/32"	1/16"	5.0
BK95	9.25"	8.50"	8.90"	3	-	-	X	X	-	X	X	-	-	X	X	7/8"	1 15/32"	21/32"	1/16"	5.4
BK100	9.75"	9.00"	9.40"	3	-	-	X	-	X	X	X	X	X	X	X	7/8"	1 15/32"	21/32"	1/16"	5.6
BK105	10.25"	9.50"	9.90"	3	-	-	-	-	-	X	-	-	-	X	X	7/8"	1 15/32"	21/32"	1/16"	5.8
BK110	10.75"	10.00"	10.40"	3	-	-	X	-	-	X	X	X	-	X	X	7/8"	1 15/32"	21/32"	1/16"	6.4
BK115	11.25"	10.50"	10.90"	3	-	-	-	-	-	X	-	-	-	X	X	7/8"	1 15/32"	21/32"	1/16"	6.9
BK120	11.75"	11.00"	11.40"	3	-	-	X	-	-	X	-	X	-	X	X	7/8"	1 15/32"	21/32"	1/16"	7.4
BK130	12.75"	12.00"	12.40"	3	-	-	X	-	-	X	X	X	X	-	X	7/8"	1 15/32"	21/32"	1/16"	8.4
BK140	13.75"	13.00"	13.40"	3	-	-	X	-	-	X	-	X	-	-	X	7/8"	1 15/32"	21/32"	1/16"	9.4
BK160	15.75"	15.00"	15.40"	3	-	-	-	-	-	X	X	X	X	-	X	7/8"	1 15/32"	21/32"	1/16"	11.4
BK190	18.75"	18.00"	18.40"	3	-	-	-	-	-	X	-	X	X	-	X	7/8"	1 15/32"	21/32"	1/16"	13.4

* Note: Do Not use these "BK" sheaves with "B" gripnotch belt ratings.

X= Current stock item, other bore requirements are available upon request.

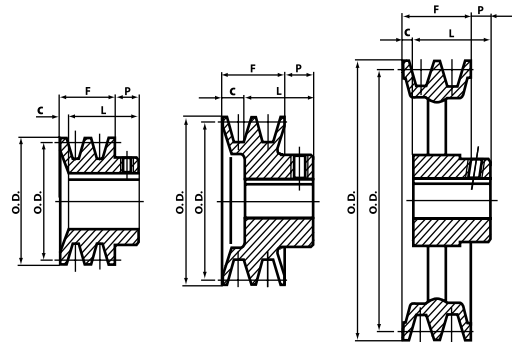
CAST IRON SHEAVES

**FOR 4L OR A BELTS
& 5L OR B BELTS**



PAINTED FINISH

Bore Range	Keyseat
1/2"	None
5/8" to 7/8"	3/16" x 3/32"
15/16" to 1 1/4"	1/4" x 1/8"
1 7/16"	3/8" x 3/16"

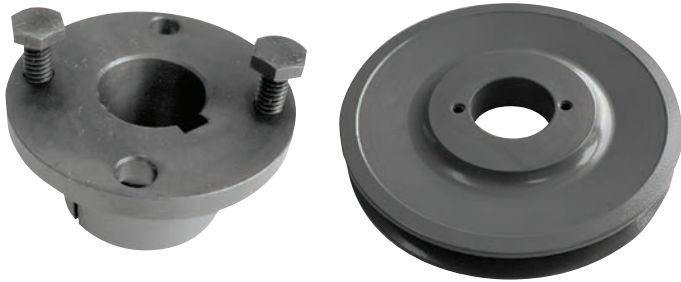


TYPE 1 TYPE 2 TYPE 3

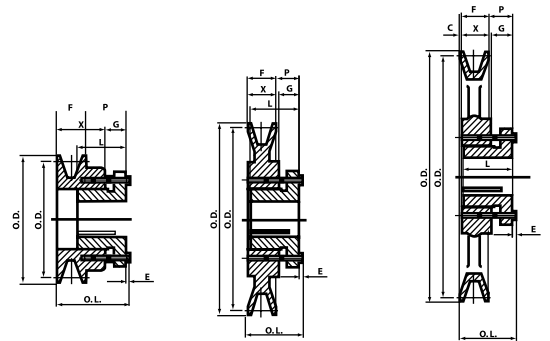
DOUBLE GROOVE SHEAVES - FINISHED BORE

Part No.	Diameters			Type	Stock Bores Marked "X"									Dimensions				Wt. Lbs.
	Outside	Datum "A"	Datum "B"		1/2"	5/8"	3/4"	7/8"	1"	1 1/8"	1 3/16"	1 3/8"	1 7/16"	F	L	P	C	
2BK25	2.50"	1.90"	2.30"	1	X	X	X	X	-	-	-	-	1 3/4"	1 31/32"	15/32"	1/4"	1.3	
2BK27	2.70"	2.10"	2.50"	1	X	X	X	X	X	-	-	-	1 3/4"	1 31/32"	15/32"	1/4"	1.6	
2BK28	2.95"	2.20"	2.60"	1	X	X	X	X	X	X	-	-	1 3/4"	1 31/32"	15/32"	1/4"	1.9	
2BK30	3.15"	2.40"	2.80"	1	X	X	X	X	X	X	-	-	1 3/4"	1 31/32"	15/32"	1/4"	2.3	
2BK32	3.35"	2.60"	3.00"	1	-	X	-	X	X	X	-	-	1 3/4"	1 31/32"	15/32"	1/4"	2.6	
2BK34	3.55"	2.80"	3.20"	1	-	X	X	X	X	X	-	X	1 3/4"	1 31/32"	15/32"	1/4"	2.8	
2BK36	3.75"	3.00"	3.40"	1	-	-	X	X	X	X	-	X	1 3/4"	1 31/32"	15/32"	1/4"	3.3	
2BK40	3.95"	3.20"	3.60"	2	-	X	X	X	X	X	-	-	1 3/4"	1 15/32"	15/32"	3/4"	3.3	
2BK45	4.25"	3.50"	3.90"	2	-	-	-	-	X	X	-	X	1 3/4"	1 15/32"	15/32"	3/4"	3.3	
2BK47	4.45"	3.70"	4.10"	2	-	-	-	X	X	X	-	-	1 3/4"	1 15/32"	15/32"	3/4"	3.7	
2BK50	4.75"	4.00"	4.40"	2	-	-	X	-	X	X	-	X	1 3/4"	1 15/32"	15/32"	3/4"	4.1	
2BK52	4.95"	4.20"	4.60"	2	-	-	-	X	X	X	-	X	1 3/4"	1 15/32"	15/32"	3/4"	4.5	
2BK55	5.25"	4.50"	4.90"	2	-	-	-	-	X	X	-	X	1 3/4"	1 15/32"	15/32"	3/4"	4.5	
2BK57	5.45"	4.70"	5.10"	2	-	-	-	-	X	X	-	X	1 3/4"	1 15/32"	15/32"	3/4"	5.1	
2BK60	5.75"	5.00"	5.40"	3	-	-	X	X	X	X	-	X	1 3/4"	1 15/32"	15/32"	3/4"	4.9	
2BK62	5.95"	5.20"	5.60"	3	-	-	-	-	X	X	-	X	1 3/4"	1 15/32"	15/32"	3/4"	4.8	
2BK65	6.25"	5.50"	5.90"	3	-	-	-	-	X	X	-	X	1 3/4"	1 15/32"	15/32"	3/4"	5.0	
2BK67	6.45"	5.70"	6.10"	3	-	-	-	-	X	X	-	X	1 3/4"	1 15/32"	15/32"	3/4"	5.0	
2BK70	6.75"	6.00"	6.40"	3	-	-	X	-	X	X	X	X	1 3/4"	1 19/32"	11/32"	1/2"	6.6	
2BK80	7.75"	7.00"	7.40"	3	-	-	X	-	X	X	X	X	1 3/4"	1 19/32"	11/32"	1/2"	7.2	
2BK90	8.75"	8.00"	8.40"	3	-	-	X	-	X	X	X	X	1 3/4"	1 19/32"	11/32"	1/2"	8.4	
2BK100	9.75"	9.00"	9.40"	3	-	-	X	-	X	X	X	X	1 3/4"	1 19/32"	11/32"	1/2"	9.4	
2BK110	10.75"	10.00"	10.40"	3	-	-	-	-	X	X	-	X	1 3/4"	1 19/32"	11/32"	1/2"	10.4	
2BK120	11.75"	11.00"	11.40"	3	-	-	-	-	X	X	-	X	1 3/4"	1 19/32"	11/32"	1/2"	11.8	
2BK130	12.75"	12.00"	12.40"	3	-	-	-	-	X	X	-	X	1 3/4"	1 19/32"	11/32"	1/2"	14.9	
2BK140	13.75"	13.00"	13.40"	3	-	-	-	-	X	X	-	X	1 3/4"	1 19/32"	11/32"	1/2"	16.3	
2BK160	15.75"	15.00"	15.40"	3	-	-	-	-	X	X	-	X	1 3/4"	1 19/32"	11/32"	1/2"	18.0	
2BK190	18.75"	18.00"	18.40"	3	-	-	-	-	X	X	-	X	1 3/4"	1 19/32"	11/32"	1/2"	23.3	

BK H SERIES SHEAVES



PAINTED FINISH



TYPE 1

TYPE 2

TYPE 3

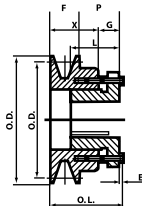
LIGHT DUTY SINGLE GROOVE H SERIES BUSHED SHEAVES

Part No.	Diameters			Type	Dimensions								Wt. Less Bush
	Outside	Datum "A"	Datum "B"		O.L.	F	L	P	C	X	G	E	
BK30H	3.15"	2.40"	2.80"	1	1 ¹⁵ / ₁₆ "	7/8"	1 ¹ / ₄ "	7/8"	—	1 ⁵ / ₁₆ "	7/16"	3/16"	1.20
BK32H	3.35"	2.60"	3.00"	1	1 ¹⁵ / ₁₆ "	7/8"	1 ¹ / ₄ "	7/8"	—	1 ⁵ / ₁₆ "	7/16"	3/16"	1.40
BK34H	3.55"	2.80"	3.20"	1	1 ¹⁵ / ₁₆ "	7/8"	1 ¹ / ₄ "	7/8"	—	1 ⁵ / ₁₆ "	7/16"	3/16"	1.60
BK36H	3.75"	3.00"	3.40"	2	1 ¹ / ₂ "	7/8"	1 ¹ / ₄ "	7/16"	—	7/8"	7/16"	3/16"	1.20
BK40H	3.95"	3.20"	3.60"	2	1 ¹ / ₂ "	7/8"	1 ¹ / ₄ "	7/16"	—	7/8"	7/16"	3/16"	1.40
BK45H	4.25"	3.50"	3.90"	2	1 ¹ / ₂ "	7/8"	1 ¹ / ₄ "	7/16"	—	7/8"	7/16"	3/16"	1.80
BK47H	4.45"	3.70"	4.10"	2	1 ¹ / ₂ "	7/8"	1 ¹ / ₄ "	7/16"	—	7/8"	7/16"	3/16"	2.20
BK50H	4.75"	4.00"	4.40"	2	1 ¹ / ₂ "	7/8"	1 ¹ / ₄ "	7/16"	—	7/8"	7/16"	3/16"	2.00
BK52H	4.95"	4.20"	4.60"	2	1 ¹ / ₂ "	7/8"	1 ¹ / ₄ "	7/16"	—	7/8"	7/16"	3/16"	2.10
BK55H	5.25"	4.50"	4.90"	2	1 ¹ / ₂ "	7/8"	1 ¹ / ₄ "	7/16"	—	7/8"	7/16"	3/16"	2.70
BK57H	5.45"	4.70"	5.10"	2	1 ¹ / ₂ "	7/8"	1 ¹ / ₄ "	7/16"	—	7/8"	7/16"	3/16"	2.70
BK60H	5.75"	5.00"	5.40"	2	1 ¹ / ₂ "	7/8"	1 ¹ / ₄ "	7/16"	—	7/8"	7/16"	3/16"	2.50
BK62H	5.95"	5.20"	5.60"	2	1 ¹ / ₂ "	7/8"	1 ¹ / ₄ "	7/16"	—	7/8"	7/16"	3/16"	2.60
BK65H	6.25"	5.50"	5.90"	2	1 ¹ / ₂ "	7/8"	1 ¹ / ₄ "	7/16"	—	7/8"	7/16"	3/16"	2.80
BK67H	6.45"	5.70"	6.10"	2	1 ¹ / ₂ "	7/8"	1 ¹ / ₄ "	7/16"	—	7/8"	7/16"	3/16"	2.90
BK70H	6.75"	6.00"	6.40"	3	1 ⁹ / ₁₆ "	7/8"	1 ¹ / ₄ "	1/2"	1/16"	7/8"	7/16"	3/16"	2.80
BK72H	6.95"	6.20"	6.60"	3	1 ⁹ / ₁₆ "	7/8"	1 ¹ / ₄ "	1/2"	1/16"	7/8"	7/16"	3/16"	3.10
BK75H	7.25"	6.50"	6.90"	3	1 ⁹ / ₁₆ "	7/8"	1 ¹ / ₄ "	1/2"	1/16"	7/8"	7/16"	3/16"	3.30
BK77H	7.45"	6.70"	7.10"	3	1 ⁹ / ₁₆ "	7/8"	1 ¹ / ₄ "	1/2"	1/16"	7/8"	7/16"	3/16"	3.80
BK80H	7.75"	7.00"	7.40"	3	1 ⁹ / ₁₆ "	7/8"	1 ¹ / ₄ "	1/2"	1/16"	7/8"	7/16"	3/16"	3.40
BK85H	8.25"	7.50"	7.90"	3	1 ⁹ / ₁₆ "	7/8"	1 ¹ / ₄ "	1/2"	1/16"	7/8"	7/16"	3/16"	3.80
BK90H	8.75"	8.00"	8.40"	3	1 ⁹ / ₁₆ "	7/8"	1 ¹ / ₄ "	1/2"	1/16"	7/8"	7/16"	3/16"	4.30
BK95H	9.25"	8.50"	8.90"	3	1 ⁹ / ₁₆ "	7/8"	1 ¹ / ₄ "	1/2"	1/16"	7/8"	7/16"	3/16"	5.00
BK100H	9.75"	9.00"	9.40"	3	1 ⁹ / ₁₆ "	7/8"	1 ¹ / ₄ "	1/2"	1/16"	7/8"	7/16"	3/16"	5.20
BK105H	10.25"	9.50"	9.90"	3	1 ⁹ / ₁₆ "	7/8"	1 ¹ / ₄ "	1/2"	1/16"	7/8"	7/16"	3/16"	5.50
BK110H	10.75"	10.00"	10.40"	3	1 ⁹ / ₁₆ "	7/8"	1 ¹ / ₄ "	1/2"	1/16"	7/8"	7/16"	3/16"	6.00
BK115H	11.25"	10.50"	10.90"	3	1 ⁹ / ₁₆ "	7/8"	1 ¹ / ₄ "	1/2"	1/16"	7/8"	7/16"	3/16"	6.40
BK120H	11.75"	11.00"	11.40"	3	1 ⁹ / ₁₆ "	7/8"	1 ¹ / ₄ "	1/2"	1/16"	7/8"	7/16"	3/16"	6.90
BK130H	12.75"	12.00"	12.40"	3	1 ⁹ / ₁₆ "	7/8"	1 ¹ / ₄ "	1/2"	1/16"	7/8"	7/16"	3/16"	6.90
BK140H	13.75"	13.00"	13.40"	3	1 ⁹ / ₁₆ "	7/8"	1 ¹ / ₄ "	1/2"	1/16"	7/8"	7/16"	3/16"	8.50
BK150H	14.75"	14.00"	14.40"	3	1 ⁹ / ₁₆ "	7/8"	1 ¹ / ₄ "	1/2"	1/16"	7/8"	7/16"	3/16"	9.50
BK160H	15.75"	15.00"	15.40"	3	1 ⁹ / ₁₆ "	7/8"	1 ¹ / ₄ "	1/2"	1/16"	7/8"	7/16"	3/16"	9.80
BK190H	18.75"	18.00"	18.40"	3	1 ⁹ / ₁₆ "	7/8"	1 ¹ / ₄ "	1/2"	1/16"	7/8"	7/16"	3/16"	12.80

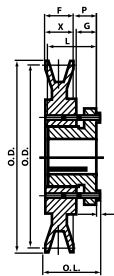
2BK H SERIES SHEAVES



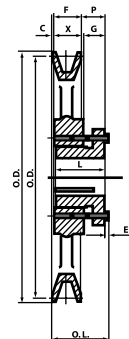
PAINTED FINISH



TYPE 1



TYPE 2



TYPE 3

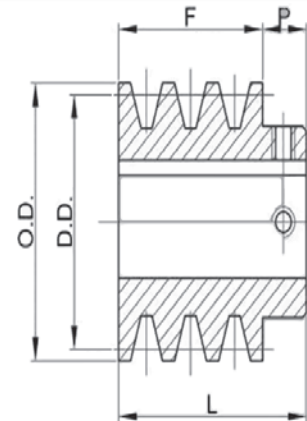
LIGHT DUTY DOUBLE GROOVE H SERIES BUSHED SHEAVES

Part No.	Diameters			Type	Dimensions								Wt. Less Bush
	Outside	Datum "A"	Datum "B"		O.L.	F	L	P	C	X	G	E	
2BK32H	3.35"	2.60"	3.00"	1	2 ¹³ / ₁₆ "	1 ³ / ₄ "	1 ¹ / ₄ "	7 ⁷ / ₈ "	1 ⁵ / ₁₆ "	7 ⁷ / ₈ "	7 ⁷ / ₁₆ "	3 ³ / ₁₆ "	2.10
2BK34H	3.55"	2.80"	3.20"	1	2 ¹³ / ₁₆ "	1 ³ / ₄ "	1 ¹ / ₄ "	7 ⁷ / ₈ "	1 ⁵ / ₁₆ "	7 ⁷ / ₈ "	7 ⁷ / ₁₆ "	3 ³ / ₁₆ "	2.40
2BK36H	3.75"	3.00"	3.40"	1	2 ³ / ₈ "	1 ³ / ₄ "	1 ¹ / ₄ "	7 ⁷ / ₁₆ "	7 ⁷ / ₈ "	7 ⁷ / ₈ "	7 ⁷ / ₁₆ "	3 ³ / ₁₆ "	2.00
2BK40H	3.95"	3.20"	3.60"	1	2 ³ / ₈ "	1 ³ / ₄ "	1 ¹ / ₄ "	7 ⁷ / ₁₆ "	7 ⁷ / ₈ "	7 ⁷ / ₈ "	7 ⁷ / ₁₆ "	3 ³ / ₁₆ "	2.40
2BK45H	4.25"	3.50"	3.90"	1	2 ³ / ₈ "	1 ³ / ₄ "	1 ¹ / ₄ "	7 ⁷ / ₁₆ "	7 ⁷ / ₈ "	7 ⁷ / ₈ "	7 ⁷ / ₁₆ "	3 ³ / ₁₆ "	3.00
2BK47H	4.45"	3.70"	4.10"	2	1 ³ / ₄ "	1 ³ / ₄ "	1 ¹ / ₄ "	7 ⁷ / ₁₆ "	—	7 ⁷ / ₈ "	7 ⁷ / ₁₆ "	3 ³ / ₁₆ "	2.80
2BK50H	4.75"	4.00"	4.40"	2	1 ³ / ₄ "	1 ³ / ₄ "	1 ¹ / ₄ "	7 ⁷ / ₁₆ "	—	7 ⁷ / ₈ "	7 ⁷ / ₁₆ "	3 ³ / ₁₆ "	3.30
2BK52H	4.95"	4.20"	4.60"	2	1 ³ / ₄ "	1 ³ / ₄ "	1 ¹ / ₄ "	7 ⁷ / ₁₆ "	—	7 ⁷ / ₈ "	7 ⁷ / ₁₆ "	3 ³ / ₁₆ "	3.60
2BK55H	5.25"	4.50"	4.90"	2	1 ³ / ₄ "	1 ³ / ₄ "	1 ¹ / ₄ "	7 ⁷ / ₁₆ "	—	7 ⁷ / ₈ "	7 ⁷ / ₁₆ "	3 ³ / ₁₆ "	3.90
2BK57H	5.45"	4.70"	5.10"	2	1 ³ / ₄ "	1 ³ / ₄ "	1 ¹ / ₄ "	7 ⁷ / ₁₆ "	—	7 ⁷ / ₈ "	7 ⁷ / ₁₆ "	3 ³ / ₁₆ "	4.30
2BK60H	5.75"	5.00"	5.40"	2	1 ³ / ₄ "	1 ³ / ₄ "	1 ¹ / ₄ "	7 ⁷ / ₁₆ "	—	7 ⁷ / ₈ "	7 ⁷ / ₁₆ "	3 ³ / ₁₆ "	4.40
2BK62H	5.95"	5.20"	5.60"	2	1 ³ / ₄ "	1 ³ / ₄ "	1 ¹ / ₄ "	7 ⁷ / ₁₆ "	—	7 ⁷ / ₈ "	7 ⁷ / ₁₆ "	3 ³ / ₁₆ "	4.50
2BK65H	6.25"	5.50"	5.90"	3	1 ³ / ₄ "	1 ³ / ₄ "	1 ¹ / ₄ "	7 ⁷ / ₁₆ "	1 ¹ / ₄ "	7 ⁷ / ₈ "	7 ⁷ / ₁₆ "	3 ³ / ₁₆ "	4.50
2BK67H	6.45"	5.70"	6.10"	3	1 ³ / ₄ "	1 ³ / ₄ "	1 ¹ / ₄ "	7 ⁷ / ₁₆ "	1 ¹ / ₄ "	7 ⁷ / ₈ "	7 ⁷ / ₁₆ "	3 ³ / ₁₆ "	5.00
2BK70H	6.75"	6.00"	6.40"	3	1 ³ / ₄ "	1 ³ / ₄ "	1 ¹ / ₄ "	7 ⁷ / ₁₆ "	1 ¹ / ₄ "	7 ⁷ / ₈ "	7 ⁷ / ₁₆ "	3 ³ / ₁₆ "	5.10
2BK80H	7.75"	7.00"	7.40"	3	1 ³ / ₄ "	1 ³ / ₄ "	1 ¹ / ₄ "	7 ⁷ / ₁₆ "	1 ¹ / ₄ "	7 ⁷ / ₈ "	7 ⁷ / ₁₆ "	3 ³ / ₁₆ "	6.40
2BK90H	8.75"	8.00"	8.40"	3	1 ³ / ₄ "	1 ³ / ₄ "	1 ¹ / ₄ "	7 ⁷ / ₁₆ "	1 ¹ / ₄ "	7 ⁷ / ₈ "	7 ⁷ / ₁₆ "	3 ³ / ₁₆ "	7.60
2BK100H	9.75"	9.00"	9.40"	3	1 ³ / ₄ "	1 ³ / ₄ "	1 ¹ / ₄ "	7 ⁷ / ₁₆ "	1 ¹ / ₄ "	7 ⁷ / ₈ "	7 ⁷ / ₁₆ "	3 ³ / ₁₆ "	8.40
2BK110H	10.75"	10.00"	10.40"	3	1 ³ / ₄ "	1 ³ / ₄ "	1 ¹ / ₄ "	7 ⁷ / ₁₆ "	1 ¹ / ₄ "	7 ⁷ / ₈ "	7 ⁷ / ₁₆ "	3 ³ / ₁₆ "	9.30
2BK120H	11.75"	11.00"	11.40"	3	1 ³ / ₄ "	1 ³ / ₄ "	1 ¹ / ₄ "	7 ⁷ / ₁₆ "	1 ¹ / ₄ "	7 ⁷ / ₈ "	7 ⁷ / ₁₆ "	3 ³ / ₁₆ "	11.00
2BK130H	12.75"	12.00"	12.40"	3	1 ³ / ₄ "	1 ³ / ₄ "	1 ¹ / ₄ "	7 ⁷ / ₁₆ "	1 ¹ / ₄ "	7 ⁷ / ₈ "	7 ⁷ / ₁₆ "	3 ³ / ₁₆ "	13.10
2BK140H	13.75"	13.00"	13.40"	3	1 ³ / ₄ "	1 ³ / ₄ "	1 ¹ / ₄ "	7 ⁷ / ₁₆ "	1 ¹ / ₄ "	7 ⁷ / ₈ "	7 ⁷ / ₁₆ "	3 ³ / ₁₆ "	14.80
2BK160H	15.75"	15.00"	15.40"	3	1 ³ / ₄ "	1 ³ / ₄ "	1 ¹ / ₄ "	7 ⁷ / ₁₆ "	1 ¹ / ₄ "	7 ⁷ / ₈ "	7 ⁷ / ₁₆ "	3 ³ / ₁₆ "	17.50
2BK190H	18.75"	18.00"	18.40"	3	1 ³ / ₄ "	1 ³ / ₄ "	1 ¹ / ₄ "	7 ⁷ / ₁₆ "	1 ¹ / ₄ "	7 ⁷ / ₈ "	7 ⁷ / ₁₆ "	3 ³ / ₁₆ "	21.50

3BK BORED-TO-SIZE SHEAVES



PAINTED FINISH



Three Groove Sheaves - Bored to Size

Part No.	Diameters			Type	Stock Bores Marked "X"				F	L	P	Wt. Less Bush
	Outside	Datum "A"	Datum "B"		1"	1-1/8"	1-3/8"	1-5/8"				
3BK32	3.35	2.60	3.00	1	X	X			2 1/2"	3"	1/2"	3.40
3BK34	3.55	2.80	3.20	1	X	X	X	X	2 1/2"	3"	1/2"	3.80
3BK36	3.75	3.00	3.40	1	X	X	X	X	2 1/2"	3"	1/2"	4.30
3BK40	3.95	3.20	3.60	1	X	X	X		2 1/2"	3"	1/2"	4.70

Bore Range	Keysets
5/8" to 7/8"	3/16" x 3/32"
15/16" to 1-1/8"	1/4" x 1/8"

INDIVIDUALLY PACKAGED

HOLLOW HEAD SETSCREWS

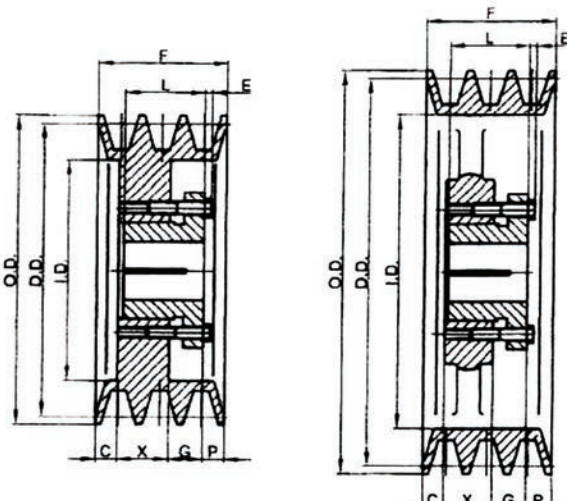
3BK H SERIES SHEAVES



**PAINTED FINISH
INDIVIDUALLY PACKAGED**

Three Groove Sheaves - Bored to Size

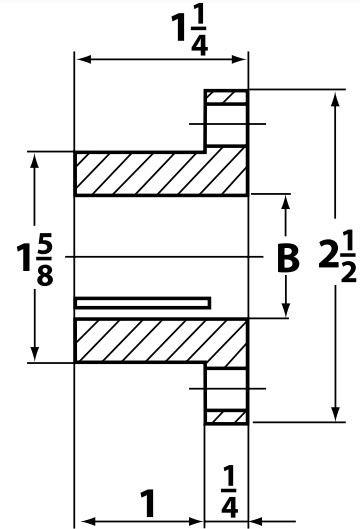
Part No.	Diameters			Inside	Type	Dimensions							Wt. Less Bush
	Outside	Datum "A"	Datum "B"			F	L	P	C	X	G	E	
3BK45H	4.25	3.50	3.90	2 5/8"	2	2 1/2"	1 1/4"	1/2"	11/16"	7/8"	7/16"	3/16"	3.90
3BK47H	4.45	3.70	4.10	2 11/16"	2	2 1/2"	1 1/4"	1/2"	11/16"	7/8"	7/16"	3/16"	4.20
3BK50H	4.75	4.00	4.40	3"	2	2 1/2"	1 1/4"	1/2"	11/16"	7/8"	7/16"	3/16"	4.40
3BK57H	5.45	4.70	5.10	3 11/16"	2	2 1/2"	1 1/4"	1/2"	11/16"	7/8"	7/16"	3/16"	5.30
3BK62H	5.95	5.20	5.60	4 3/16"	3	2 1/2"	1 1/4"	1/2"	11/16"	7/8"	7/16"	3/16"	5.80
3BK90H	8.75	8.00	8.40	7"	3	2 1/2"	1 1/4"	27/32"	11/32"	7/8"	7/16"	3/16"	9.80
3BK100H	9.75	9.00	9.40	8"	3	2 1/2"	1 1/4"	27/32"	11/32"	7/8"	7/16"	3/16"	10.90
3BK110H	10.75	10.00	10.40	9"	3	2 1/2"	1 1/4"	27/32"	11/32"	7/8"	7/16"	3/16"	12.10
3BK120H	11.75	11.00	11.40	10"	3	2 1/2"	1 1/4"	27/32"	11/32"	7/8"	7/16"	3/16"	14.30



H SERIES BUSHINGS



PAINTED FINISH



INCH BORE SIZES

Part Number	Description	Weight
HH-3/8	H Bushing 3/8" Bore	1.06
HH-7/16	H Bushing 7/16" Bore	1.04
HH-A	H Bushing 1/2" Bore	1.02
HH-9/16	H Bushing 9/16" Bore	1.00
HH-B	H Bushing 5/8" Bore	0.98
HH-11/16	H Bushing 11/16" Bore	0.96
HH-C	H Bushing 3/4" Bore	0.94
HH-13/16	H Bushing 13/16" Bore	0.92
HH-D	H Bushing 7/8" Bore	0.90
HH-E	H Bushing 15/16" Bore	0.88
HH-F	H Bushing 1" Bore	0.86
HH-1-1/16	H Bushing 1-1/16" Bore	0.84
HH-G	H Bushing 1-1/8" Bore	0.82
HH-H	H Bushing 1-3/16" Bore	0.80
HH-I	H Bushing 1-1/4" Bore	0.78
HH-1-5/16	H Bushing 1-5/16" Bore	0.76
HH-J	H Bushing 1-3/8" Bore	0.74
HH-K	H Bushing 1-7/16" Bore	0.72
HH-L	H Bushing 1-1/2" Bore	0.70

METRIC BORE SIZES

Part Number	Description	Weight
HH-10MM	H Bushing 10MM Bore	1.06
HH-11MM	H Bushing 11MM Bore	1.04
HH-12MM	H Bushing 12MM Bore	1.02
HH-14MM	H Bushing 14MM Bore	1.00
HH-15MM	H Bushing 15MM Bore	0.99
HH-16MM	H Bushing 16MM Bore	0.98
HH-18MM	H Bushing 18MM Bore	0.96
HH-19MM	H Bushing 19MM Bore	0.94
HH-20MM	H Bushing 20MM Bore	0.92
HH-22MM	H Bushing 22MM Bore	0.90
HH-24MM	H Bushing 24MM Bore	0.88
HH-25MM	H Bushing 25MM Bore	0.86
HH-28MM	H Bushing 28MM Bore	0.84
HH-30MM	H Bushing 30MM Bore	0.82
HH-32MM	H Bushing 32MM Bore	0.80
HH-35MM	H Bushing 35MM Bore	0.78
HH-36MM	H Bushing 36MM Bore	0.77
HH-38MM	H Bushing 38MM Bore	0.76

COUPLINGS & INSERTS



**BLACK
PHOSPHATE
FINISH**

JAW COUPLINGS

Stock No.	Coupling No.	Bore Size	Weight Lbs.
L075-B5/32	L075	5/8"	.51
L090-B5/32	L090	5/8"	.71
L095-B5/32	L095	5/8"	.90
L099-B5/32	L099	5/8"	1.70
L100-B5/32	L100	5/8"	1.85

Jaw Couplings have non-standard 5/32" keyway

COUPLINGS

Stock No.	Coupling No.	Bore Size	Weight Lbs.
L050-1/4	L050	1/4"	.13
L050-5/16	L050	5/16"	.13
L050-3/8	L050	3/8"	.12
L050-7/16	L050	7/16"	.11
L050-A	L050	1/2"	.11
L050-B	L050	5/8"	.10
L070-A	L070	1/2"	.29
L070-B	L070	5/8"	.27
L070-C	L070	3/4"	.25
L075-7/16	L075	7/16"	.54
L075-A	L075	1/2"	.53
L075-B	L075	5/8"	.51
L075-C	L075	3/4"	.47
L075-D	L075	7/8"	.45
L090-7/16	L090	7/16"	.74
L090-A	L090	1/2"	.73
L090-B	L090	5/8"	.71
L090-C	L090	3/4"	.70
L090-F	L090	1"	.68
L095-7/16	L095	7/16"	.94
L095-A	L095	1/2"	.93
L095-9/16	L095	9/16"	.91
L095-B	L095	5/8"	.90
L095-C	L095	3/4"	.87
L095-D	L095	7/8"	.82
L095-E	L095	15/16"	.80
L095-F	L095	1"	.79
L095-G	L095	1-1/8"	.74
L099-A	L099	1/2"	1.75
L099-B	L099	5/8"	1.70
L099-C	L099	3/4"	1.65
L099-D	L099	7/8"	1.63
L099-E	L099	15/16"	1.60
L099-F	L099	1"	1.55
L099-G	L099	1-1/8"	1.50
L099-I	L099	1-1/4"	1.45
L099-J	L099	1-3/8"	1.40

COUPLINGS

Stock No.	Coupling No.	Bore Size	Weight Lbs.
L100-A	L100	1/2"	1.90
L100-9/16	L100	9/16"	1.87
L100-B	L100	5/8"	1.85
L100-C	L100	3/4"	1.80
L100-D	L100	7/8"	1.73
L100-E	L100	15/16"	1.70
L100-F	L050	1"	1.65
L100-G	L100	1-1/8"	1.60
L100-I	L100	1-1/4"	1.55
L100-J	L100	1-3/8"	1.50
L110-B	L110	5/8"	4.05
L110-C	L110	3/4"	4.03
L110-D	L110	7/8"	3.95
L110-F	L110	1"	3.80
L110-G	L110	1-1/8"	3.78
L110-I	L110	1-1/4"	3.68
L110-J	L110	1-3/8"	3.58
L110-L	L110	1-1/2"	3.45
L110-N	L110	1-5/8"	3.40

RUBBER INSERTS

Stock No.	Coupling Insert	Weight Lbs.
L050NBR	L-050 Rubber Insert	.01
L070NBR	L-070 Rubber Insert	.02
L075NBR	L-075 Rubber Insert	.03
L095NBR*	L-095 Rubber Insert	.04
L100NBR*	L-100 Rubber Insert	.07
L110NBR	L-110 Rubber Insert	.16

URETHANE INSERTS

Stock No.	Coupling Insert	Weight Lbs.
L075UR	L-075 Urethane Insert	.03
L095UR*	L-095 Urethane Insert	.04
L100UR	L-100 Urethane Insert	.07
L110UR	L-110 Urethane Insert	.16

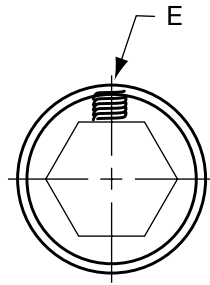
**L095 series insert used for L090 series couplers*

**L100 series insert used for L099 series couplers*

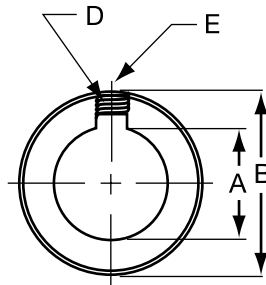
SHAFT COUPLERS



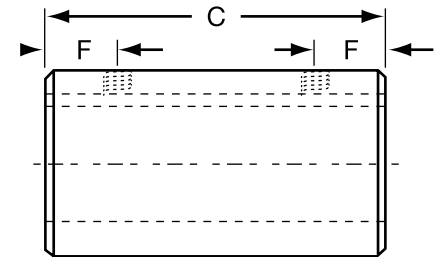
- Material is C1018
- Black Oxide Finish



Hex Bore



Round Bore



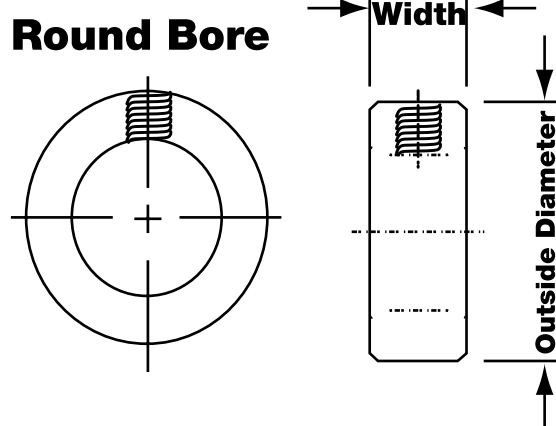
Material: Steel

HEX AND ROUND BORE COUPLERS

Part Number	A	B	C	D	E	F	Wt. Lbs.
SHFTH-9/16	9/16" HEX	1 1/2"	2 1/2"	NONE	2 1/4" x 20	5/8"	.52
SHFTH-1000	5/8" HEX	1 1/2"	2 1/2"	NONE	2 1/4" x 20	5/8"	.51
SHFTH-1200	3/4" HEX	1 5/8"	3"	NONE	2 1/4" x 20	5/8"	.93
SHFTH-1400	7/8" HEX	1 3/4"	3"	NONE	2 1/4" x 20	5/8"	1.32
SHFTH-1600	1" HEX	1 3/4"	3"	NONE	2 5/16" x 18	5/8"	1.38
SHFTH-1800	1 1/8" HEX	2	4 1/2"	NONE	2 5/16" x 18	1"	2.69
SHFTH-2000	1 1/4" HEX	2 1/8"	4 1/2"	NONE	2 5/16" x 18	1"	2.88
SHFTH-2400	1 1/2" HEX	2 3/4"	4 1/2"	NONE	2 5/16" x 18	1 1/8"	5.00
SHFTH-2800	1 3/4" HEX	3	4 1/2"	NONE	2 3/8" x 16	1 1/8"	5.63
SHFTR-0800	1/2" RD	1 1/4"	2"	1/8"	2 1/4" x 20	1/2"	.56
SHFTR-1000	5/8" RD	1 1/2"	2 1/2"	3/16"	2 1/4" x 20	5/8"	1.00
SHFTR-1200	3/4" RD	1 5/8"	3"	3/16"	2 1/4" x 20	5/8"	1.38
SHFTR-1400	7/8" RD	1 3/4"	3 1/2"	3/16"	2 1/4" x 20	3/4"	1.75
SHFTR-1600	1" RD	1 5/8"	3"	1/4"	2 5/16" x 18	5/8"	1.06
SHFTR-1604	1" RD	1 3/4"	4"	1/4"	2 5/16" x 18	7/8"	1.94
SHFTR-1800	1 1/8" RD	2	4 1/2"	1/4"	2 5/16" x 18	7/8"	2.69
SHFTR-1900	1 3/16" RD	2	4 1/2"	1/4"	2 5/16" x 18	7/8"	2.50
SHFTR-2000	1 1/4" RD	2 1/8"	4 1/2"	1/4"	2 5/16" x 18	1"	2.88
SHFTR-2005	1 1/4" RD	2 1/8"	4 1/2"	5/16"	2 5/16" x 18	1"	2.80
SHFTR-2200	1 3/8" RD	2 5/16"	4 1/2"	5/16"	2 3/8" x 16	1"	3.38
SHFTR-2300	1 7/16" RD	2 5/16"	4 1/2"	3/8"	2 3/8" x 16	1"	3.19
SHFTR-2400	1 1/2" RD	2 1/2"	4 1/2"	3/8"	2 3/8" x 16	1"	3.88

SOLID SHAFT COLLARS

- All Solid Shaft Collars include one Setscrew installed.
- Zinc Plated Finish

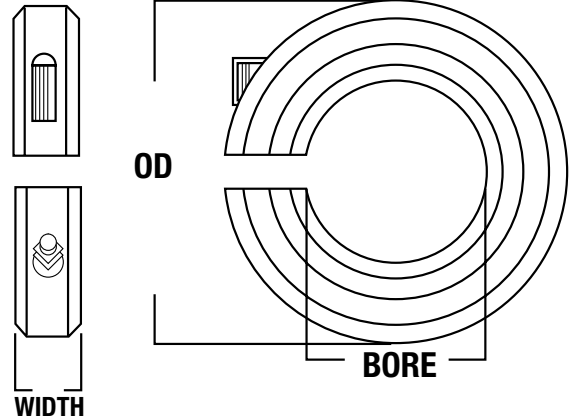


STOCK BORE SIZES

Part Number	Bore	O.D.	Width	Clamp Screws	Weight Lbs.
SC-A-18	3/16"	7/16"	1/4"	#8-32 x 1/8	0.008
SC-A-25	1/4"	1/2"	5/16"	#10-24 x 1/8	0.010
SC-A-31	5/16"	5/8"	5/16"	#10-24 x 3/16	0.020
SC-A-37	3/8"	3/4"	3/8"	1/4-20 x 3/16	0.030
SC-A-43	7/16"	7/8"	7/16"	1/4-20 x 1/4	0.050
SC-A-50	1/2"	1"	7/16"	1/4-20 x 1/4	0.060
SC-A-62	5/8"	1 1/8"	1/2"	5/16-18 x 1/4	0.130
SC-A-75	3/4"	1 1/4"	9/16"	5/16-18 x 1/4	0.130
SC-A-87	7/8"	1 1/2"	9/16"	5/16-18 x 1/4	0.190
SC-A-93	15/16"	1 1/2"	9/16"	5/16-18 x 1/4	0.190
SC-A-100	1"	1 5/8"	5/8"	5/16-18 x 1/4	0.190
SC-A-112	1 1/8"	1 3/4"	5/8"	5/16-18 x 1/4	0.250
SC-A-118	1 3/16"	2	11/16"	3/8-16 x 3/8	0.380
SC-A-125	1 1/4"	2	11/16"	3/8-16 x 3/8	0.320
SC-A-137	1 3/8"	2 1/8"	3/4"	3/8-16 x 3/8	0.380
SC-A-143	1 7/16"	2 1/4"	3/4"	3/8-16 x 3/8	0.440
SC-A-150	1 1/2"	2 1/4"	3/4"	3/8-16 x 3/8	0.440
SC-A-162	1 5/8"	2 1/2"	13/16"	3/8-16 x 3/8	0.560
SC-A-168	1 11/16"	2 1/2"	13/16"	3/8-16 x 3/8	0.560
SC-A-175	1 3/4"	2 3/4"	7/8"	1/2-13 x 1/2	0.690
SC-A-187	1 7/8"	2 3/4"	7/8"	1/2-13 x 1/2	0.630
SC-A-193	1 15/16"	3"	7/8"	1/2-13 x 1/2	0.830
SC-A-200	2"	3"	7/8"	1/2-13 x 1/2	0.750

SINGLE SPLIT SHAFT

- All Double Split Shaft Collars include two Cap Screw installed.
- Black Oxide Finish

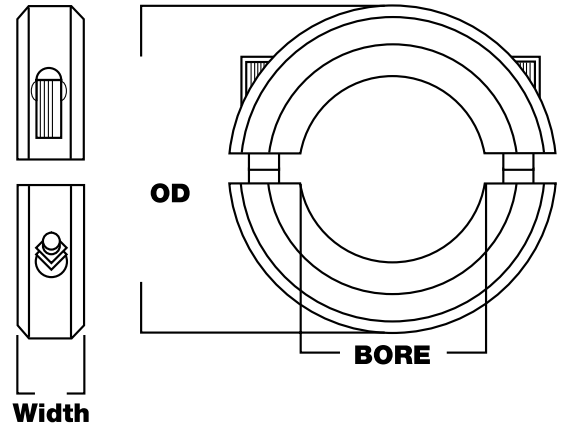


STOCK BORE SIZES

Part Number	Bore	O.D.	Width	Clamp Screws	Weight Lbs.
SC-SSA-18	3/16"	5/8"	5/16"	4-40	0.008
SC-SSA-25	1/4"	11/16"	5/16"	4-40	0.012
SC-SSA-31	5/16"	11/16"	5/16"	4-40	0.020
SC-SSA-37	3/8"	7/8"	7/16"	6-32	0.032
SC-SSA-43	7/16"	15/16"	3/8"	6-32	0.052
SC-SSA-50	1/2"	1 1/8"	11/32"	8-32	0.068
SC-SSA-62	5/8"	1 5/16"	7/16"	10-32	0.064
SC-SSA-75	3/4"	1 1/2"	1/2"	1/4-28	0.120
SC-SSA-87	7/8"	1 5/8"	1/2"	1/4-28	0.176
SC-SSA-93	15/16"	1 3/4"	1/2"	1/4-28	0.160
SC-SSA-100	1"	1 3/4"	1/2"	1/4-28	0.220
SC-SSA-112	1 1/8"	1 7/8"	1/2"	1/4-28	0.236
SC-SSA-118	1 3/16"	2 1/16"	1/2"	1/4-28	0.380
SC-SSA-125	1 1/4"	2 1/16"	1/2"	1/4-28	0.352
SC-SSA-137	1 3/8"	2 1/4"	9/16"	1/4-28	0.412
SC-SSA-143	1 7/16"	2 1/4"	9/16"	1/4-28	0.476
SC-SSA-150	1 1/2"	2 3/8"	9/16"	1/4-28	0.448
SC-SSA-162	1 5/8"	2 3/8"	11/16"	5/16-24	0.620
SC-SSA-168	1 11/16"	2 3/4"	11/16"	5/16-24	0.590
SC-SSA-175	1 3/4"	2 3/4"	11/16"	5/16-24	0.710
SC-SSA-187	1 7/8"	2 7/8"	11/16"	5/16-24	0.750
SC-SSA-193	1 15/16"	3"	11/16"	5/16-24	0.980
SC-SSA-200	2"	3"	11/16"	5/16-24	0.930

DOUBLE SPLIT SHAFT COLLARS

- All Double Split Shaft Collars include two Cap Screw installed.
- Black Oxide Finish

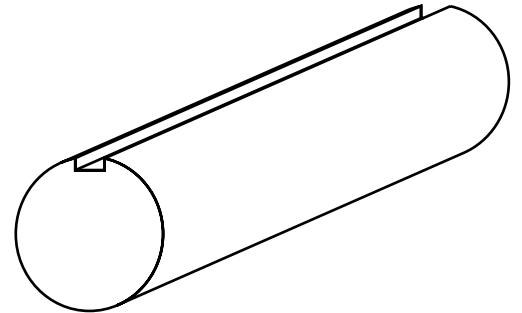
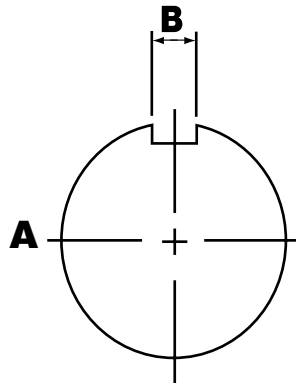


STOCK BORE SIZES

Part Number	Bore	O.D.	Width	Clamp Screws	Weight Lbs.
SC-DSA-18	3/16"	5/8"	5/16"	4-40	0.008
SC-DSA-25	1/4"	11/16"	5/16"	4-40	0.012
SC-DSA-31	5/16"	11/16"	5/16"	4-40	0.020
SC-DSA-37	3/8"	7/8"	7/16"	6-32	0.032
SC-DSA-43	7/16"	15/16"	3/8"	6-32	0.052
SC-DSA-50	1/2"	1 1/8"	13/32"	8-32	0.068
SC-DSA-62	5/8"	1 5/16"	7/16"	10-32	0.064
SC-DSA-75	3/4"	1 1/2"	1/2"	1/4-28	0.120
SC-DSA-87	7/8"	1 5/8"	1/2"	1/4-28	0.176
SC-DSA-93	15/16"	1 3/4"	1/2"	1/4-28	0.160
SC-DSA-100	1"	1 3/4"	1/2"	1/4-28	0.220
SC-DSA-112	1 1/8"	1 7/8"	1/2"	1/4-28	0.236
SC-DSA-118	1 3/16"	2 1/16"	1/2"	1/4-28	0.380
SC-DSA-125	1 1/4"	2 1/16"	1/2"	1/4-28	0.352
SC-DSA-137	1 3/8"	2 1/4"	9/16"	1/4-28	0.412
SC-DSA-143	1 7/16"	2 1/4"	9/16"	1/4-28	0.476
SC-DSA-150	1 1/2"	2 3/8"	9/16"	1/4-28	0.448
SC-DSA-162	1 5/8"	2 5/8"	11/16"	5/16-24	0.620
SC-DSA-168	1 1/8"	2 3/4"	11/16"	5/16-24	0.590
SC-DSA-175	1 3/4"	2 3/4"	11/16"	5/16-24	0.710
SC-DSA-187	1 7/8"	2 7/8"	11/16"	5/16-24	0.750
SC-DSA-193	1 15/16"	3	11/16"	5/16-24	0.980
SC-DSA-200	2"	3	11/16"	5/16-24	0.930

KEYED SHAFTING

- Material is C1018
- Plain Finish



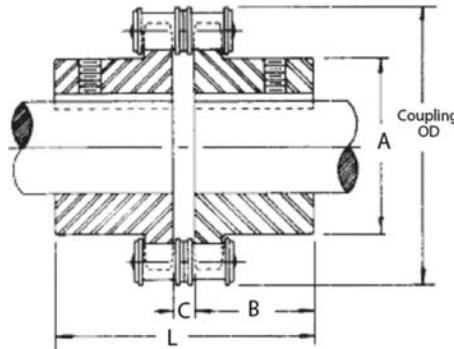
3' LENGTHS

DIAMETER (A)	NOM. KEY WIDTH (B)	SHAFT LENGTH	WEIGHT PER PIECE IN LBS.
1/2"	1/8"	3 Foot	2.01
5/8"	3/16"	3 Foot	3.12
3/4"	3/16"	3 Foot	4.50
7/8"	3/16"	3 Foot	6.12
1"	1/4"	3 Foot	8.01
1 1/8"	1/4"	3 Foot	10.14
1 3/16"	1/4"	3 Foot	11.31
1 1/4"	1/4"	3 Foot	12.51
1 3/8"	5/16"	3 Foot	15.15
1 7/16"	3/8"	3 Foot	16.56
1 1/2"	3/8"	3 Foot	17.67

6' LENGTHS

DIAMETER (A)	NOM. KEY WIDTH (B)	SHAFT LENGTH	WEIGHT PER PIECE IN LBS.
1/2"	1/8"	6 Foot	4.02
5/8"	3/16"	6 Foot	6.24
3/4"	3/16"	6 Foot	9.50
7/8"	3/16"	6 Foot	12.24
1"	1/4"	6 Foot	16.02
1 1/8"	1/4"	6 Foot	20.78
1 3/16"	1/4"	6 Foot	22.62
1 1/4"	1/4"	6 Foot	25.02
1 3/8"	5/16"	6 Foot	30.30
1 7/16"	3/8"	6 Foot	33.12
1 1/2"	3/8"	6 Foot	35.34

ROLLER CHAIN COUPLINGS



Coupling Selection

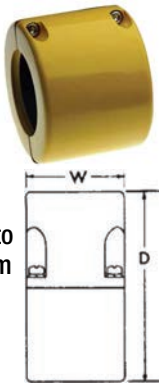
Roller chain couplings have a torque capacity in excess of the torque normally transmitted by shafting which falls within the coupling bore range. Select the smallest coupling which will accommodate both shafts. For reversing operation, shock or pulsating loads, or other severe operating conditions, select the next larger coupling size.

A cover should be used to assure maximum service life, particularly if the coupling operates at high speeds or under moist conditions. For proper lubrication, fill the space between the cover and the coupling with soft to medium consistency coupling grease.

ALL CHAIN COUPLINGS HAVE HARDENED TEETH

Stock Coupling Covers

Covers allow excellent lubrication, and their use is recommended to obtain maximum coupling life. Covers are of aluminum and are made in halves for easy installation. Synthetic rubber oil seals, which contact the coupling hubs, retain the lubricant and prevent the entry of dirt. Covers are fitted with gaskets between the halves.



Bored to Size Couplings w/Finished Bore

Coupling Number	Stock Finished Bores (include keyway and 2 set screws)	Hub Dimensions		B	C	L	Coupling OD	Wt. Lbs.
		A-1	A-2					
4012CS	1/2, 5/8, 3/4, 7/8	1.416	1.282	1.417	0.291	3.125	2.441	.55
4016CS	5/8, 3/4, 7/8, 1, 1-1/8	2.015	1.889	1.575	0.291	3.441	3.031	1.30
5016CS	5/8, 3/4, 7/8, 1, 1-1/8, 1-3/16, 1-1/4, 1-3/8, 1-7/16, 1-1/2, 1-5/8	2.473	2.360	1.575	0.382	3.925	3.779	2.20
5018CS	3/4, 7/8, 1, 1-1/8, 1-3/16, 1-1/4, 1-3/8, 1-7/16, 1-1/2, 1-5/8, 1-3/4, 1-7/8, 1-15/16	2.871	2.750	1.772	0.382	3.925	4.173	2.65
6018CS	1, 1-1/8, 1-3/16, 1-1/4, 1-3/8, 1-7/16, 1-1/2, 1-5/8, 1-3/4, 1-7/8, 1-15/16, 2, 2-1/8, 2-1/4, 2-3/8, 2-7/16	3.674	3.550	2.205	0.453	4.862	5.000	6.10
6020CS	1-1/8, 1-1/4, 1-1/2, 1-3/4, 2-1/8, 2-1/4, 2-3/8, 2-7/16, 2-5/8	4.035	3.875	2.205	0.453	4.862	5.472	7.40
8018CS	1-1/8, 1-1/4, 1-1/2, 1-3/4, 2-1/8, 2-3/8, 2-7/16, 2-5/8	4.520	4.330	2.480	0.598	5.559	6.654	13.70

Stock Coupling Covers

Cover Cat. No.	Aluminum		Wt. Lbs.
	D	W	
4012-CC	3.03	2.83	0.66
4016-CC	3.62	2.83	0.77
5016-CC	4.33	3.42	1.10
5018-CC	4.80	3.34	1.32
6018-CC	5.79	4.13	2.65
6020-CC	6.22	4.13	2.65
6020-CC	7.48	5.08	4.19
8020-CC	8.27	5.39	5.51

Coupling w/Minimum Plain Bores Ready for Reboring

Coupling Number	Minimum Plain Bore	Maximum Bore	Maximum Bore	Recommended Max. RPM	Chain Number	Wt. Lbs.
4012CS-SB	7/16	7/8	0.66	5000	4012-2RC	0.4
4016CS-SB	5/8	1-1/8	1.50	5000	4016-2RC	0.5
5016CS-SB	5/8	1-5/8	2.82	4000	5016-2RC	1.2
5018CS-SB	3/4	1-15/16	3.53	3600	5018-2RC	1.3
6018CS-SB	1	2-7/16	6.35	3000	6018-2RC	2.2
6020CS-SB	1-1/8	2-5/8	8.43	2500	6020-2RC	2.6
8018CS-SB	1-1/8	2-5/8	12.61	2000	8018-2RC	5.3
8020CS-SB	1-1/2	2-5/8	15.17	2000	8020-2RC	5.9

INDEX

INDEX

SPROCKETS	
#25	5
#35	6
#40	7
#50	8
#60	9
#80	10
SINGLE WELD-ON SPROCKETS	
#40	11
#50	12
#60	13
#80	14
WELD HUBS	15 - 16
ONE PIECE WELD SPLIT PULLEYS	17
DOUBLE PULLEYS	18
IDLERS	19
ROLLERCHAIN	20
SHEAVES	
CAST IRON	21 - 22
BK H SERIES	23
2BK H SERIES	24
3BK BORED TO SIZE	25
3BK H SERIES	26
H SERIES BUSHINGS	27
COUPLINGS + INSERTS	28
SHAFT COUPLERS	29
SHAFT COLLARS	
SOLID	30
SINGLE SPLIT	31
DOUBLE SPLIT	32
KEYED SHAFTING	33
ROLLER CHAIN COUPLINGS	34



concentric™
INTERNATIONAL

www.concentricintl.com

Copyright ©2015. All Rights Reserved