



**COBRA**<sup>®</sup>  
TOOLS



**COBRA**  
**PRO**<sup>®</sup>

# Drain Cleaning and Plumbing Tools Catalog

**TOUGH. TRUSTED. TOOLS.<sup>™</sup>**



# The Right Tool. The Only Tool.

Cobra®. For decades, chosen for its rugged performance and dependability. A full range of drain cleaning and plumbing specialty tools, for professionals and homeowners alike. These are the tools you count on to get the job done right. The first time.



**COBRA**®  
TOOLS

Built for both homeowners and plumbers, a wide range of drain cleaning tools, plumbing hand tools, and appliance brushes.



**COBRA**®  
**PRO**

Built for the pro, drain cleaning tools and machines designed to conquer the toughest clogs – in even the harshest environments.



**TOUGH.**  
**TRUSTED.**  
**TOOLS.™**





# Table of Contents

## Cobra Pro

---

Cobra Pro Drain Cleaning Power Machines ..... 2-3

Cobra Pro Drain Cleaning Hand Tools ..... 4-5

## Cobra Tools

---

Drain Cleaning Power Machines..... 6-9

Drain Cleaning Hand Tools ..... 10-16

Plungers ..... 17-19

Home Maintenance.....20

Tubing Tools..... 21-25

Drainage Tools..... 26-27

Faucet & Sink Tools..... 28-29

Saws .....30

Specialty Plumbing Tools ..... 31-33

## Part Number Index

---

Index ..... 34-35





## Cobra Pro® - Built for the Professional

The Cobra Pro drain cleaning tools and machines are designed to conquer the toughest clogs – even in the harshest environments. Our Cobra Pro tools employ materials and construction at the top of the toughness scale, and are engineered for precise control and user safety.

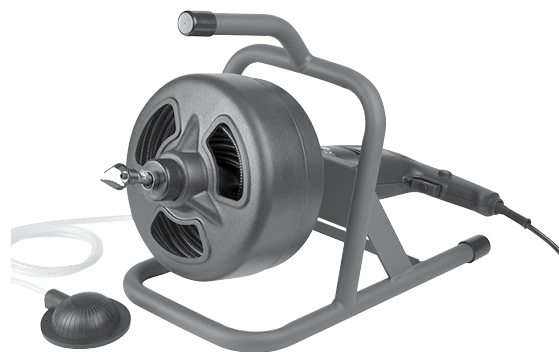
### 3/8 in x 75 ft Cable Drum Machine

- Clears 2 in to 4 in pipes such as floor drains, stack-outs and cleanouts
- 3/8 in diameter integral wound music wire cable with reinforced steel inner core; slotted end to attach cutters
- 1/3 HP motor with on-off-reverse switch and footswitch for hands free operation
- 3-position telescopic handle and rugged wheels for easy transport
- Includes 4-piece cutter set
- 1/3 HP motor rotates cable to clear clog quicker



### 5/16 in x 50 ft Cable Drum Machine

- Clears 1 in to 3 in pipes such as sinks, showers and tub drains
- 5/16 in diameter music wire cable with reinforced steel inner core; slotted end to attach cutters
- Double insulated drill motor with footswitch for hands free operation
- Includes 4-piece cutter set
- Drill motor rotates cable to clear clog quicker



### 5/16 in x 25 ft Electric Spinner

- Clears 1 in to 3 in pipes such as sinks, showers and tub drains
- 5/16 in diameter music wire cable with reinforced steel inner core, with open wound boring head
- Double insulated drill motor
- Drill motor rotates cable to clear clog quicker





Part No. UPC	Description Package Size	Case Qty
-----------------	-----------------------------	-------------

**Drain Cleaning Power Machines**

**Cable Drum Machines**

CP3020 088712000792	3/8" x 75' Cable Drum Machine 1 Per Box 27.63"L x 61.50"W x 21.00"D	1
------------------------	--	---



CP2040 088712000808	5/16" x 50' Cable Drum Machine 1 Per Box 13.94"L x 38.75"W x 19.00"D	1
------------------------	---	---



**Augers**

CP1020 088712000815	5/16" x 25' Electric Spinner, drill included 1 Per Box 23.94"L x 10.44"W x 23.00"D	1
------------------------	---	---





## Auto Feed Drum Auger

1/4 in x 25 ft



### Clears 1 in to 2 in pipes such as sinks, showers and tub drains

- 1/4 in diameter high carbon spring wire with reinforced nylon inner core; with open wound boring head
- High impact poly housing with pistol grip handle for better control
- Automatic feed-rotate cable to feed cable in and out of drum hands free
- Manual cable rotation
- CP8060 can be used with your power drill for easier operation

## Telescopic Auger

1/2 in x 6 ft



### Clears clogged toilets

- 1/2 in diameter music wire tri-core cable with inner core (2 cables plus inner core) for added strength
- Cable extends from 3 ft to 6 ft length with a push of a button
- Zinc plated tube
- Plastic oversized non-slip grip handles
- Vinyl bowl guard to protect toilet from being scratched
- Manual cable rotation
- Alternative to plungers

Part No.  
UPC

Description  
Package Size

Case  
Qty

### Drain Cleaning Hand Tools - Augers



CP8030  
088712000778

1/4" x 25' Auto Feed Drum Auger  
1 Per Box 12.00"L x 9.00"W x 6.50"D

1



CP4040  
088712000785

1/2" x 6' Telescopic Auger  
1 Per Box 44.00"L x 6.00"W x 4.00"D

1



CP8060  
088712001263

1/4" x 25' Auto Feed Drum Auger (w/drill attachment)  
1 Per Box 11.56"L x 9.13"W x 7.50"D

1



## Replacement Parts: Cutters & Cables

Replacement cutter sets are used with CP2040 and CP3020 machines.



Part No. UPC	Description Package Size	Case Qty
-----------------	-----------------------------	-------------

### Drain Cleaning Power Machines - Pro Parts & Accessories

#### Cutters & Cables

CP9910 088712000853	4-piece Cutter Set 1 Per Box 8.04"L x 8.04"W x 1.00"D	1
------------------------	--	---



CP9030 088712000822	5/16" x 25' Replacement Cable for CP1020 Machine 1 Per Box 9.84"L x 0.14"W x 2.00"D	1
------------------------	--	---



CP9040 088712000839	5/16" x 50' Replacement Cable for CP2040 Machine 1 Per Box 9.84"L x 0.14"W x 2.00"D	1
------------------------	--	---



CP9060 088712000846	3/8" x 75' Replacement Cable for CP3020 Machine 1 Per Box 9.84"L x 0.14"W x 2.00"D	1
------------------------	---	---





# Cobra Tools

Our Cobra Tools provide tough tool performance at a great value price point. Cobra Tools deliver dependable, hard-working drain cleaning and plumbing specialty tools.

## Drain Cleaning Power Machines

### 110 ES Series



**Cleans 3/4 in to 3 in lines**

For most sinks, showers and tub drains

- Hand-held electric spinner
- Double insulated drill motor
- Music wire with high impact, rust proof plastic drum

### 20 Series



**Cleans 3/4 in to 3 in lines with 1/4 in cable**

**Cleans 1 in to 3 in lines with 5/16 in cable**

For most sinks, showers and tub drains

- High-torque, double insulated drill motor
- Industrial grade pneumatic foot switch
- Rugged 9 in rotational molded drum with quick drum release
- Contour welded steel tubular frame construction
- Music wire cable

### 40 Series



**Cleans 2 in to 4 in lines**

For most sinks, floor drains and roof stacks

- 1/3 HP Motor with forward – off – reverse switch
- Manual overload reset protector and in-line GFI
- Industrial grade pneumatic foot switch
- Rugged 13 in corrosion-resistant molded cable drum
- Music wire with inner core
- Slotted end cable
- Includes 4-piece cutter set

Part No.  
UPC

Description  
Package Size

Case  
Qty

## Drain Cleaning Power Machines

### 110 ES Series Machines



Part No. UPC	Description Package Size	Case Qty
110ES 088712000457	1/4" x 25' Electric Spinner 1 Per Box 23.81"L x 10.31"W x 23.00"D	1

1

### 20 Series Machines



Part No. UPC	Description Package Size	Case Qty
90020 088712900207	1/4" x 50' Cable Drum Machine 1 Per Box 19.81"L x 13.06"W x 16.44"D	1

1



Part No.  
UPCDescription  
Package SizeCase  
Qty**Drain Cleaning Power Machines (cont.)****20 Series Machines (cont.)**

90021	5/16" x 50' Cable Drum Machine	1
088712000365	1 Per Box 15.50"L x 13.00"W x 18.00"D	

**40 Series Machines**

90040	3/8" x 75' Cable Drum Machine	1
088712900405	1 Per Box 21.81"L x 13.50"W x 21.69"D	

90041	3/8" x 100' Cable Drum Machine	1
088712000372	1 Per Box 20.00"L x 13.00"W x 20.25"D	

**10 Series Machines**

90110	14" x 25' Replacement Cable	1
088712901105	1 Per Box 11.19"L x 11.19"W x 2.81"D	

90111	14" x 50' Replacement Cable for 20 Series	1
088712901112	1 Per Box 11.19"L x 11.19"W x 2.81"D	

**20 Series Machines**

99106	5/16" x 50' Replacement Cable	1
088712000389	1 Per Box 11.19"L x 11.19"W x 3.00"D	

**40 Series Machines**

90440	3/8" x 75' Replacement Cable	1
088712904403	1 Per Box 14.19"L x 14.25"W x 2.88"D	

90441	3/8" x 100' Replacement Cable	1
088712904410	1 Per Box 14.19"L x 14.25"W x 2.88"D	

**10 Series Machines**

99323	Replacement Drill Motor for 10 Series and 20 Series	1
088712993230	1 Per Box 11.19"L x 11.19"W x 2.81"D	

**40 Series Machines**

99320	Motor 1/3 HP - Capacitor Start w/GFI	1
088712993209	1 Per Box 14.38"L x 13.75"W x 7.00"D	





Part No.  
UPC

Description  
Package Size

Case  
Qty

## Drain Cleaning Power Machines - Parts & Accessories

### 10, 20, 40 Series Models



99300  
088712993001

Air Actuated Foot Switch for 20 Series and 40 Series models  
1 Per Box 6.44"L x 4.50"W x 4.94"D

1

### 20 Series Machines



99318  
088712993186

9" Drum Assembly for 20 Series  
1 Per Box 10.06"L x 9.94"W x 15.25"D

1

### 20, 40 Series Machines



90099  
088712900993

4 Piece Cutter Set for 5/16" - 1/2" cable  
1 Per Box 8.11"L x 8.11"W x 2.98"D

1



99202  
088712992028

Straight Boring Head 3/8", 1/2", 5/16"  
1 Per Box 6.00"L x 4.50"W x 1.00"D

1



99204  
088712992042

Spear Head - 3/8", 1/2", 5/16"  
1 Per Box 6.00"L x 4.50"W x 1.00"D

1



99205  
088712992059

Grease Cutter - 3/8", 1/2", 5/16"  
1 Per Box 6.00"L x 4.50"W x 1.00"D

1



99206  
088712992066

Side Cutter - 3/8", 1/2", 5/16"  
1 Per Box 6.00"L x 4.50"W x 1.00"D

1

### 20 Series Models



99301  
088712993018

Air Actuated Press Box for 20 Series  
1 Per Box 6.44"L x 4.50"W x 4.94"D

1





Part No.  
UPC

Description  
Package Size

Case  
Qty

**Drain Cleaning Power Machines - Parts & Accessories (cont.)**

**40 Series Machines**

99319	13" Drum assembly	1
088712993193	1 Per Box 17.00"L x 12.00"W x 7.00"D	



99330	Belt Guard Cover	1
088712993308	1 Per Box 11.19"L x 11.19"W x 2.81"D	





## Drain Cleaning Hand Tools – Snakes

### Flat Tape

- High-grade 1/4 in flat wire
- High carbon, oil tempered, non-kink flat steel wire
- Closed wound spring boring head

### Power Snake

- Attaches to your power drill
- Rust proof protective vinyl tubing



Part No.  
UPC

Description  
Package Size

Case  
Qty

### Drain Cleaning Hand Tools - Snakes

#### Flat Tapes & Snakes



02150 088712021506	1/4" x 1/32" x 15' Flat tape 8.00"L x 8.00"W x 0.50"D	12
-----------------------	--	----

02250 088712022503	1/4" x 1/32" x 25' Flat tape 8.00"L x 8.00"W x 0.50"D	12
-----------------------	--	----

02500 088712025009	1/4" x 1/32" x 50' Flat tape 8.00"L x 8.00"W x 0.50"D	12
-----------------------	--	----



81150 088712811503	1/4" x 15' Power Snake (attaches to power drill) 12.20"L x 12.20"W x 1.38"D	5
-----------------------	--	---

81150-3 088712811503	1/4" x 15' Power Snake (attaches to power drill) 12.20"L x 12.20"W x 1.38"D	3
-------------------------	--	---

81200 088712812005	1/4" x 20' Power Snake (attaches to power drill) 12.20"L x 12.20"W x 1.69"D	5
-----------------------	--	---

81250 088712812500	1/4" x 25' Power Snake (attaches to power drill) 12.20"L x 12.20"W x 1.38"D	5
-----------------------	--	---

81250-3 088712812500	1/4" x 25' Power Snake (attaches to power drill) 12.00"L x 12.00"W x 1.50"D	3
-------------------------	--	---



87200 088712872009	1/4" x 20" Cable Snake-It™ (drill not included) 7.00"L x 7.00"W x 9.00"D	4
-----------------------	---	---



# Drain Cleaning Hand Tools – Augers & Sewer Rods

## Augers

From homeowner to professional, tradesman and the industrial pro, choose the auger that best suits the job.

### Pipe Augers feature:

- High grade, high carbon round spring steel wire
- Galvanized torque-twist steel handle with spin speed grip
- Integrated corkscrew open-wound boring head

### Toilet Augers feature:

- No-slip grip handles,
- Safety guide tube

### Drum Augers feature

- High impact polymer housing - long lasting durability
- Screw construction
- Series 84000 and 86000
- Quick-lever cable lock
- Pistol grip for better control



## Sewer Rods

Our 50000-71000 series sewer rod fit all size sewer drain pipes. The 95000 series are best suited for sewer outlets, stack vents and storm gutters.

Part No. UPC	Description Package Size	Case Qty
<b>Drain Cleaning Hand Tools - Augers</b>		
<b>Augers</b>		
10080 088712100805	1/4" x 8' Drain Pipe Auger with Storage tote 8.75"L x 7.75"W x 7.87"D	5
10100 088712101000	1/4" x 10' Drain Pipe Auger with Storage tote 8.75"L x 7.75"W x 7.87"D	5
10150 088712101505	1/4" x 15' Drain Pipe Auger with Storage tote 8.75"L x 7.75"W x 7.87"D	5
10250 088712102502	1/4" x 25' Drain Pipe Auger with Storage tote 8.75"L x 7.75"W x 7.87"D	5



Part No.  
UPCDescription  
Package SizeCase  
Qty

## Drain Cleaning Hand Tools - Augers (cont.)

### Augers (cont.)

	20150 088712201502	3/8" x 15' Drain Pipe Auger 9.84"L x 0.14"W x 9.06"D	6
	CBR20250 088712202509	3/8" x 25' Drain Pipe Auger 9.84"L x 0.14"W x 9.45"D	6
	20250-4 088712202509	3/8" x 25' Drain Pipe Auger 9.84"L x 0.14"W x 10.24"D	4
	20500 088712205005	3/8" x 50' Drain Pipe Auger 11.02"L x 2.17"W x 11.02"D	3
	30500 088712305002	1/2" x 50' Drain Pipe Auger 11.42"L x 2.36"W x 11.81"D	3
	CBR31000 088712310006	1/2" x 100' Drain Pipe Auger 14.17"L x 3.15"W x 14.57"D	2
	40030 088712400301	Homeowner Toilet Auger (3/8" x 3') 9.00"L x 32.50"W x 0.75"D	5
	41030 088712410300	Economy Toilet Auger(3/8" x 3') 10.24"L x 31.10"W x 2.17"D	12
	42030 088712420309	Standard Toilet Auger(3/8" x 3') 9.84"L x 32.68"W x 2.17"D	12
	42030-5 088712420309	Standard Toilet Auger(3/8" x 3') 32.68"L x 9.84"W x 2.17"D	5
	42060 088712420606	Standard Toilet Auger (3/8" x 6') 9.84"L x 32.68"W x 1.00"D	12
	43030 088712430308	Deluxe Toilet Auger(3/8" x 3') 9.84"L x 32.68"W x 2.17"D	12
	44030 088712440307	Heavy Duty Toilet Auger (1/2" x 3') 9.45"L x 35.04"W x 2.17"D	12
	45030 088712450306	Professional Toilet Auger(1/2" x 3') 9.84"L x 34.65"W x 1.57"D	12
	45030-6 088712450306	Professional Toilet Auger(1/2" x 3') 9.50"L x 34.00"W x 0.75"D	6
	45060 088712450603	Professional Toilet Auger(1/2" x 6') 9.84"L x 34.65"W x 1.57"D	12

Part No.  
UPCDescription  
Package SizeCase  
Qty**Drain Cleaning Hand Tools - Augers & Sewer Rods (cont.)****Augers (cont.)**

46030	Tradesman Toilet Auger(9/16" x 3')	1
088712460305	1 Per Box 6.50"L x 3.00"W x 46.30"D	



47030	Industrial Toilet Auger(1/2" x 3')	1
088712470304	1 Per Box 6.50"L x 3.00"W x 46.30"D	

**PRO/HD Augers**

49240	Urinal (5/16" x 4' Total)	1
088712492405	1 Per Box 34.00"L x 6.25"W x 44.29"D	



49360	Toilet (1/2" x 6' Total)	1
088712493600	1 Per Box 6.50"L x 3.00"W x 46.30"D	



49360 DH	Heavy-Duty w/Drop-Head (1/2" x 6')	1
088712493617	1 Per Box 6.50"L x 3.00"W x 46.30"D	

49370	3' Toilet Auger w/Open Hook	1
088712493709	1 Per Box 6.50"L x 3.00"W x 46.30"D	

49370 DH	3' Toilet Auger w/Drop Head	1
088712493716	1 Per Box 6.50"L x 3.00"W x 46.30"D	

**Drum Augers**

00710	1/8" x 10' Skinny Snake	4
088712000686	8.50"L x 4.00"W x 4.00"D	





Part No.  
UPCDescription  
Package SizeCase  
Qty

## Drain Cleaning Hand Tools - Augers & Sewer Rods (cont.)

### Drum Augers (cont.)



84150	1/4" x 15' Cable	4
088712841500	6.50"L x 6.50"W x 10.50"D	

84150-2	1/4" x 15' Cable	2
088712841500	6.50"L x 6.50"W x 12.21"D	

84150-6	1/4" x 15' Cable	6
088712841500	11.00"L x 6.50"W x 10.50"D	

84200	1/4" x 20' Cable	4
088712842002	6.50"L x 6.50"W x 10.50"D	

84250	1/4" x 25' Cable	4
088712842507	6.50"L x 6.50"W x 10.50"D	



85150	1/4" x 15' Cable auger with pistol grip handle	4
088712851509	6.50"L x 11.02"W x 12.40"D	

85200-6	1/4" x 15' Cable auger with pistol grip handle	6
088712000341	11.00"L x 6.50"W x 10.50"D	

85250	1/4" x 25' Cable auger with pistol grip handle	4
088712852506	6.50"L x 11.02"W x 12.40"D	



86150	1/4" x 15' Cable auger with power pistol grip handle (with drill attachment)	4
088712861508	6.50"L x 11.02"W x 12.40"D	

86250	1/4" x 25' Cable auger with power pistol grip handle	4
088712862505	6.50"L x 11.02"W x 10.50"D	

86250-6	1/4" x 25' Cable auger with power pistol grip handle	6
088712862505	11.00"L x 6.50"W x 10.50"D	

### Sewer Rod



50250	1/2' x 3/64" x 25'	3
088712502500	17.00"L x 17.00"W x 1.00"D	

50500	1/2' x 3/64" x 50'	3
088712505006	17.00"L x 17.00"W x 1.00"D	

50750	1/2' x 3/64" x 75'	3
088712507505	17.00"L x 17.00"W x 1.00"D	

51000	1/2' x 3/64" x 100'	3
088712510000	17.00"L x 17.00"W x 1.00"D	

60250	3/4" x 3/64" x 25'	3
088712602507	17.00"L x 17.00"W x 1.00"D	

60500	3/4" x 3/64" x 50'	3
088712605003	17.00"L x 17.00"W x 1.00"D	

60750	3/4" x 3/64" x 75'	3
088712607502	17.00"L x 17.00"W x 1.00"D	

61000	3/4" x 3/64" x 100'	3
088712610007	17.00"L x 17.00"W x 1.00"D	

70500	3/4" x 1/8" x 50'	1
088712705000	1 Per Box 35.00"L x 35.00"W x 1.00"D	

71000	3/4" x 1/8" x 100'	11
088712710004	35.00"L x 35.00"W x 1.00"D	



Part No.  
UPC

Description  
Package Size

Case  
Qty

**Drain Cleaning Hand Tools - Augers & Sewer Rods (cont.)**

**Sewer Rod (cont.)**

95040 088712950400	1/2" x 3/64" x 40' Encased Sewer Rod w/Spear Head 1.00"L x 1.00"W x 16.50"D	3
95050 088712950509	1/2" x 3/64" x 50' Encased Sewer Rod w/Spear Head 17.00"L x 17.00"W x 2.00"D	3



**Other Drain Cleaning Tools**

90220 088712902201	1/4" x 1/32" x 20' Sink Cleaner 8.07"L x 8.07"W x 1.38"D	8
90220-4 088712902201	1/4" x 1/32" x 20' Sink Cleaner 8.07"L x 8.07"W x 0.50"D	4



00106C 088712001294	Hair Snake 6 pc Clip Strip 22.00"L x 2.00"W x 0.27"D	6
00112BL 088712001300	Hair Snake Blister Pack 22.00"L x 2.00"W x 0.13"D	12
00120BL 088712001317	Hair Snake Blister Pack 22.00"L x 2.00"W x 0.27"D	120
00124BL 088712001324	Hair Snake Blister Pack 22.00"L x 2.00"W x 0.27"D	24
00140BL 088712001331	Hair Snake 2 pk 22.00"L x 2.00"W x 0.41"D	12



PW28 088712001362	Hair Snake Hanging Display 22.63"L x 22.63"W x 3.15"D	28
----------------------	--	----



PW120 088712001348	Hair Snake Floor Display 41.50"L x 14.25"W x 14.00"D	120
-----------------------	---	-----





Part No.  
UPC

Description  
Package Size

Case  
Qty

## Drain Cleaning Hand Tools - Other (cont.)

### Other Drain Cleaning Tools (cont.)



00331 088712033103	Small Bladder Clears 1" to 2" Drains 4.96"L x 4.96"W x 1.28"D	6
-----------------------	--	---

00331-3 088712033103	Small Bladder Clears 1" to 2" Drains - 3 pk. 8.88"L x 8.88"W x 1.13"D	3
-------------------------	--	---



00332 088712033202	Medium Bladder Clears 1-1/2" to 3" Drains 8.75"L x 8.75"W x 1.28"D	6
-----------------------	---	---



00333 088712033301	Large Bladder Clears 4" to 6" Drains 10.75"L x 10.75"W x 2.43"D	3
-----------------------	--	---

# Plungers

The purpose of the toilet plunger is to unclog the obstruction in the trapway allowing the toilet to flush properly. We offer a full line of toilet plungers from our E-Z Plunger, bellow to force cup styles.

The bellows plungers are a strong 2-piece poly construction for use in household toilets and drains. Our force cup plungers are made of wood handles and non-marking rubber force cups.



Part No. UPC	Description Package Size	Case Qty
-----------------	-----------------------------	-------------

## Plungers

### Plungers

00320 088712003205	Plastic Bellows Plunger 12 Pack 22.00"L x 5.50"W x 5.50"D	12
00324 088712003205	Plastic Bellows Plunger 22.00"L x 5.50"W x 5.50"D	4
00310 088712003106	5" Cup Bellows Plunger, 12.5" 6.00"L x 3.25"W x 12.50"D	6
00311 088712001201	Mini Sink Plunger 4.58"L x 4.58"W x 6.50"D	6
00590 088712005902	Aero Plunger 12 Pack 6.00"L x 6.00"W x 20.00"D	12
00345 088712000082	Plunge-It™ Plungers 2 Pack 7.00"L x 7.00"W x 20.00"D	12
00345 A 088712000662	Plunge-It™ Assembled 22.00"L x 6.50"W x 6.50"D	2







Part No.  
UPC

Description  
Package Size

Case  
Qty

## Plungers (cont.)

### Plungers (cont.)



00301 088712003014	Force Cup Plunger with 18" wooden handle 19.00"L x 19.00"W x 6.00"D	12
-----------------------	--	----



00302 088712003021	Heavy Duty Force Cup Plunger with 18" wooden handle 5.51"L x 5.51"W x 21.46"D	5
-----------------------	--	---



00304 088712003045	Force Cup Plunger with 9" wooden handle 10.00"L x 10.00"W x 4.00"D	12
-----------------------	---	----



00305 088712003052	Force Cup Plunger with 18" wooden handle 19.00"L x 19.00"W x 5.00"D	12
-----------------------	--	----



00306 088712003069	Heavy Duty Force Cup Plunger with 21" painted wood handle 19.00"L x 19.00"W x 6.00"D	6
-----------------------	---	---



00307-4 088712000617	Force Cup Plunger Assembled 6.00"L x 6.00"W x 18.00"D	4
-------------------------	--	---



Part No.  
UPC

Description  
Package Size

Case  
Qty

### Plungers (cont.)

#### Plungers (cont.)

00346      Plunger Caddy      6  
088712000358      5.00"L x 5.00"W x 6.00"D



00207      Plunge-N-Store®      4  
088712002079      7.50"L x 7.50"W x 23.00"D



00385      Low Flow Plunger & Caddy      2  
088712001232      22.00"L x 22.00"W x 7.00"D



00300      Air Powered Plunge-It™      2  
088712003007      18.00"L x 4.00"W x 4.00"D




 Part No.  
 UPC

 Description  
 Package Size

 Case  
 Qty

**Home Maintenance**
**Brushes**


00051	Dryer Lint Trap Brush	3
088712000518	36.00"L x 2.00"W x 2.00"D	



00053	40" Telescopic Appliance Brush	3
088712000532	26.38"L x 26.38"W x 2.17"D	



00054	10' Dryer Vent Brush	3
088712000549	48.00"L x 2.00"W x 2.00"D	

**Part No.**  
**UPC****Description**  
**Package Size****Shelf Case**  
**Qty Qty****Tubing Tools****Cutters**

PST001 039166046294	Enclosed Feed Tube Cutter for 1/8" to 1-1/8" OD copper and PCV tubing 6.00"L x 6.00"W x 1.25"D	5	25
PST026 039166046362	Replacement Cutter Wheels for PST001 and PST006 3.94"L x 3.94"W x 0.95"D	5	25
PST002 039166046300	Ratcheting PVC Cutter for up to 1-5/8" plastic, vinyl and rubber tubing 9.50"L x 9.50"W x 1.13"D	5	25
PST024 039166051793	Replacement Blade for PST002 8.50"L x 8.50"W x 0.20"D	5	25
PST003 039166046317	Jr. Tube Cutter for 1/8" - 5/8" Copper and PVC Tubing 6.00"L x 6.00"W x 1.00"D	5	25
PST027 039166046379	Replacement Cutter Wheels for PST003 3.94"L x 3.94"W x 0.95"D	5	25
PST004 039166046324	Screw Feed Tube Cutter for 1/8" to 1-1/8" Copper and PVC tubing 8.25"L x 8.25"W x 1.25"D	5	25
PST025 039166046355	Replacement Cutter Wheels for PST0004 3.94"L x 3.94"W x 0.95"D	5	25





Part No.  
UPCDescription  
Package SizeShelf Case  
Qty Qty

## Tubing Tools (cont.)

### Cutters (cont.)

PST005  
039166046331Large Diameter Tube Cutter for 5/8" to 2-1/8" Copper and  
PVC Tubing  
10.00"L x 10.00"W x 1.38"D

5 25

PST028  
039166046386Replacement Cutter Wheels for PST005  
3.94"L x 3.94"W x 0.95"D

5 25

PST006  
039166046881Large Diameter Mini Tube Cutter for 1/8" to 1-1/8" Copper  
and PVC Tubing  
6.00"L x 6.00"W x 1.15"D

5 25

PST007  
039166046348Mini Tube Cutter for 1/8" to 7/8" Copper and PVC tubing  
3.00"L x 3.00"W x 1.25"D

5 25

PST029  
039166046393Replacement Cutter Wheels  
3.94"L x 3.94"W x 0.95"D

5 25

PST010  
039166101832Tube Cutter Large Diameter  
13.78"L x 13.78"W x 1.25"D

5 5

PST014  
0887120005252-In-1 Cutter With Ratchet Handle for 1/4" to 1-1/8" Copper,  
Aluminum and Brass Tubing  
10.50"L x 10.50"W x 1.75"D

5 5

Part No.  
UPCDescription  
Package SizeShelf Case  
Qty Qty**Tubing Tools (cont.)****Cutters (cont.)**

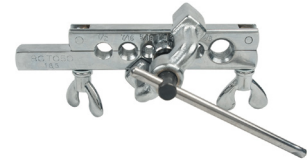
PST030 088712000303	Replacement Cutter Wheels for PST011 3.88"L x 3.88"W x 0.63"D	5	25
------------------------	--	---	----



PST109 039166090969	Inside Pipe Cutter for 1-1/4" or larger PVC and ABS Pipe (use with hand drill) 8.44"L x 8.44"W x 1.50"D	5	25
------------------------	--	---	----

**Flaring Tools, Reamers & Brushes**

PST050 039166046409	Heavy Duty Flaring Tool Flares 3/16" to 5/8" tubing 10.00"L x 10.00"W x 1.14"D	-	25
------------------------	---	---	----



PST052 039166046416	All-In-1 Flaring Tool for 3/16 -5/8" copper, aluminum, annealed brass and stainless steel tubing 12.25"L x 12.25"W x 3.00"D	-	25
------------------------	--	---	----



PST053 039166046423	6-In-1 Sawing Tool 8.50"L x 8.50"W x 1.20"D	5	25
------------------------	--	---	----



PST085 039166091164	Inner/Outer Reamer for 1/8" to 1-5/8" copper tubing, plastic, iron, steel and brass pipe 6.25"L x 6.25"W x 2.30"D	5	25
------------------------	--	---	----



PST088 039166090976	4-In-1 Fitting Brush for 1/2" and 3/4" Copper Tubing and Fittings 8.00"L x 1.75"W x 0.98"D	-	25
------------------------	---	---	----





Part No.  
UPC

Description  
Package Size

Shelf Case  
Qty Qty

## Tubing Tools (cont.)

### Flaring Tools, Reamers & Brushes (cont.)



PST090 039166046492	Deburring Tool For Iron Pipe, Copper, Brass and PVC 8.44"L x 8.44"W x 1.00"D	5	25
------------------------	---	---	----



PST095 039166046508	Replacement Blades for PST090 3.88"L x 3.88"W x 0.95"D	5	25
------------------------	---	---	----



PST132 039166090983	1/2" Fitting Brush - Carbon Steel Bristles 6.25"L x 1.25"W x 1.57"D	5	25
------------------------	--	---	----



PST133 039166090990	3/4" Fitting Brush - Carbon Steel Bristles 6.25"L x 1.25"W x 1.57"D	5	25
------------------------	--	---	----



PST232 039166091188	1/2" Fitting Brush - Stainless Steel Bristles 6.50"L x 0.63"W x 1.38"D	5	25
------------------------	---	---	----



PST233 039166091195	3/4" Fitting Brush - Stainless Steel Bristles 8.50"L x 3.50"W x 0.90"D	5	25
------------------------	---	---	----

### Bending Tools



PST073 039166046454	Tube Bending Spring Set for 1/4" - 5/8" Copper Tubing 14.17"L x 14.17"W x 1.57"D	5	25
------------------------	---	---	----



PST070 039166046430	1/4" Tube Bending Spring 14.17"L x 14.17"W x 1.25"D	5	25
------------------------	--	---	----



Part No.  
UPC

Description  
Package Size

Shelf Case  
Qty Qty

**Tubing Tools (cont.)**

**Bending Tools (cont.)**

PST071 039166046447	1/2" Tube Bending Spring 14.17"L x 14.17"W x 1.25"D	5	25
PST075 039166046478	3/8" Tube Bending Spring 14.17"L x 14.17"W x 1.25"D	5	25
PST076 039166046485	5/8" Tube Bending Spring 14.17"L x 14.17"W x 1.25"D	5	25
PST074 039166046461	Lever Style Tube Bender for 1/4" to 3/8" tubing 10.00"L x 10.00"W x 1.88"D	-	25

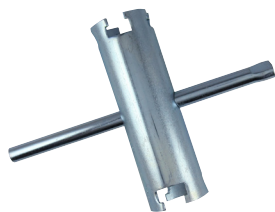




Part No.  
UPCDescription  
Package SizeShelf Case  
Qty Qty

## Drainage Tools

### Wrenches & Pliers



PST147  
039166046638

Basket Strainer Wrench  
8.50"L x 8.50"W x 1.38"D

- 5



PST148  
039166046645

Pop Up Plug Wrench  
8.25"L x 8.25"W x 1.08"D

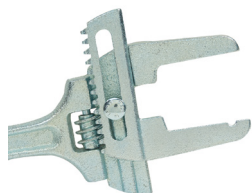
- 5



PST149  
039166046652

Lock Nut Wrench  
8.25"L x 8.25"W x 0.50"D

- 5



PST152  
039166046683

Adjustable Slip Nut Wrench for 1" to 3" nuts  
12.01"L x 12.01"W x 1.25"D

- 5



PST162  
039166046775

Plumber's Wrench for 1-3/4", 2" and 2-1/2" drain pipe nuts  
8.25"L x 8.25"W x 0.38"D

- 5



PST164  
039166046799

Garbage Disposal Wrench  
8.25"L x 8.25"W x 0.40"D

- 5



PST170  
039166046843

Tub Drain Remover  
8.25"L x 8.25"W x 2.00"D

5 5



PST211  
088712002116

10" Smooth Jaw Pliers  
12.01"L x 12.01"W x 0.77"D

- 5



**Part No.  
UPC**

**Description  
Package Size**

**Shelf Case  
Qty Qty**

**Drainage Tools (cont.)**

**Wrenches & Pliers (cont.)**

PST185 039166090914	10" Cast Iron Wrench 11.60"L x 11.60"W x 1.10"D	-	5
PST187 039166090921	14" Cast Iron Wrench 15.00"L x 15.00"W x 1.40"D	-	5
PST188 039166090938	18" Cast Iron Wrench 16.00"L x 16.00"W x 1.63"D	-	5
PST390 088712003908	14" Aluminum Pipe Wrench 12.87"L x 12.87"W x 1.28"D	-	5
PST391 088712003915	18" Aluminum Pipe Wrench 18.88"L x 18.88"W x 1.50"D	-	5
PST392 088712003922	24" Aluminum Pipe Wrench 24.88"L x 24.88"W x 1.69"D	-	5



Part No.  
UPCDescription  
Package SizeShelf Case  
Qty Qty

## Faucet & Sink Tools

### Faucet & Sink Tools



PST140 039166046584	Telescoping Basin Wrench - 16" Adjustable Arm 14.96"L x 14.96"W x 1.18"D	5	20
------------------------	---	---	----

PST166 039166046812	Ratchet Jaw Basin Wrench Attachment for 3/8" Ratchet 4.81"L x 4.81"W x 0.88"D	5	25
------------------------	--	---	----



PST151 039166046676	Basin Wrench 14.17"L x 14.17"W x 0.75"D	5	25
------------------------	--	---	----



PST153 039166046690	Faucet Reseating Tool - Resurfaces 1/4" and 3/8" Faucet Seats 6.00"L x 6.00"W x 0.88"D	5	25
------------------------	---	---	----



PST165 039166046805	Long Stem Faucet Reseating Tool - Resurfaces 1/4", 3/8" and 1/2" Faucet Seats 9.00"L x 9.00"W x 1.70"D	-	5
------------------------	---	---	---



PST141 039166046591	Shower Valve Socket Wrench Set - For 1-1/32" and 1-3/32" hex, 1-1/32", 1-3/32", 1-5/32", 1-9/32", 1-11/32" and 1-7/16" Shower Faucet Stems 11.00"L x 11.00"W x 2.00"D	5	5
------------------------	--	---	---



PST158 039166046737	Shower Valve Socket Wrench for 1-1/32" and 1-3/32" Hex 6.00"L x 6.00"W x 1.32"D	-	5
------------------------	--	---	---



Part No.  
UPC

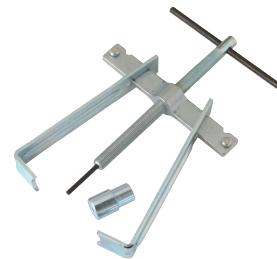
Description  
Package Size

Shelf Case  
Qty Qty

**Faucet & Sink Tools (cont.)**

**Faucet & Sink Tools (cont.)**

PST159 039166046744	Shower Valve Socket Wrench for 29/32" and 31/32" Hex 6.00"L x 6.00"W x 1.60"D	-	5
PST160 039166046751	Valve Socket Wrench - for 21/32" and 27/32" Hex 6.00"L x 6.00"W x 1.00"D	-	5
PSB3424 039166094806	Heavy Duty Tapered Faucet Seat Wrench - Resurfaces 1/4", 3/8" and 1/2" Faucet Seats 7.87"L x 7.87"W x 0.51"D	-	10
PST156 039166046713	Tapered Faucet Seat Wrench 5.00"L x 5.00"W x 0.50"D	5	25
PST157 039166046720	6-Step Faucet Seat Wrench 5.00"L x 5.00"W x 0.63"D	5	25
PST161 039166046768	Stem & Cartridge Wrench for Moen® Faucets 3.75"L x 4.00"W x 1.25"D	-	5
PST168 039166046836	Faucet Handle and Compression Sleeve Puller Kit 10.00"L x 10.00"W x 0.78"D	-	5





Part No.  
UPCDescription  
Package SizeShelf Case  
Qty Qty

## Saws

### Saws/Hacksaws



PST110 PCV Cable Saw 5 25  
 039166046515 8.50"L x 8.50"W x 1.00"D



PST111 13" PVC Saw 5 25  
 039166046522 18.50"L x 18.50"W x 1.00"D



PST112 18" PVC Saw 5 25  
 039166046539 19.00"L x 19.00"W x 1.00"D



PST126 13" Replacement Blade for PST111 10 50  
 039166046560 15.63"L x 15.63"W x 0.88"D



PST127 18" Replacement Blade for PST112 10 50  
 039166046577 20.60"L x 20.60"W x 0.13"D



PST113 Mini Hacksaw for brass , copper, iron, steel, wood and plastic. 5 50  
 039166046546 11.61"L x 11.61"W x 0.93"D



PST114 Close Quarters Hacksaw for copper, iron, steel wood and plastic 5 25  
 039166090907 8.25"L x 8.25"W x 0.50"D



PST125 Replacement Blades for PST113 and PST114 5 25  
 039166046553 8.38"L x 8.38"W x 0.64"D





Part No.  
UPC

Description  
Package Size

Shelf Case  
Qty Qty

### Specialty Plumbing Tools

#### Specialty Plumbing Tools

PST142 039166046607	3/8" Internal Pipe Wrench for broken or frozen pipe nipples 6.00"L x 6.00"W x 0.60"D	5	25
------------------------	---	---	----



PST143 039166046614	1/2" Internal Pipe Wrench for broken or frozen pipe nipples 6.00"L x 6.00"W x 0.70"D	5	25
------------------------	---	---	----



PST144 039166046621	3/4" Internal Pipe Wrench for broken or frozen pipe nipples 6.00"L x 6.00"W x 0.80"D	5	25
------------------------	---	---	----

PST150 039166046669	Internal Pipe Wrench Set for broken or frozen pipe nipples. For 3/8", 1/2" and 3/4" pipe nipples 6.00"L x 6.00"W x 1.00"D	-	5
------------------------	--	---	---



PST154 039166046706	4-Way Sillcock Key - for 1/4", 9/32", 5/16" and 1-1/32" Stems 5.91"L x 5.91"W x 0.50"D	5	25
------------------------	---	---	----



PST163 039166046782	Mini Strap Wrench - Adjusts to 2" pipe capacity 9.45"L x 9.45"W x 0.83"D	5	25
------------------------	---	---	----



PST173 088712001737	11" Strap Wrench 14.25"L x 14.25"W x 1.50"D	5	25
------------------------	--	---	----



PST167 039166046829	Pipe Nipple Extractor Set for broken or frozen pipe nipple. For 1/8", 1/4", 3/8" 1/2" and 3/4" pipe nipples 6.00"L x 6.00"W x 2.20"D	5	25
------------------------	---	---	----



Part No.  
UPCDescription  
Package SizeShelf Case  
Qty Qty

## Specialty Plumbing Tools (cont.)

### Specialty Plumbing Tools (cont.)



PSB3414 Solder Ladle 3"  
039166094790 3.00"L x 3.00"W x 0.50"D

- 5



PSB3415 Slot Head Street Key Wrench - 5/8" slot head x 28-3/4" length  
039166094752 27.50"L x 9.75"W x 1.18"D

- 5



PST171 No-Hub Coupling Wrench - Automatic Release at 60 lbs.  
039166090945 8.19"L x 8.19"W x 1.00"D

5 25

PS2405 Econo Plug 1-1/2" - for cast iron and PVC pipe  
039166019588 5.00"L x 4.25"W x 2.21"D

- 5



PS2406 Econo Plug 2" - for cast iron and PVC pipe  
039166029297 5.00"L x 4.25"W x 2.21"D

- 5

PS2407 Econo Plug 3" - for cast iron and PVC pipe  
039166029303 7.00"L x 5.00"W x 2.50"D

- 5

PS2408 Econo Plug 4" - for cast iron and PVC pipe  
039166029310 8.00"L x 8.00"W x 2.68"D

- 5



PS2445 Stove Pipe Cripmers for heavy pipe, wall stack or air ducts  
039166029570 10.50"L x 10.50"W x 0.50"D

- 5



PSB3444 Air Vent With Key for radiator vents and water heaters  
039166094813 0.75"L x 0.75"W x 0.25"D

- 1,000



PST191 Aluminum Dryer Vent Tape  
088712000679 7.88"L x 7.88"W x 5.51"D

- 24



Part No.  
UPC

Description  
Package Size

Shelf Case  
Qty Qty

**Specialty Plumbing Tools (cont.)**

**Specialty Plumbing Tools (cont.)**

PST192	Fiberglass Repair Tape	-	4
088712001249	3.00"L x 3.00"W x 7.50"D		





PART NO.	PAGE	PART NO.	PAGE	PART NO.	PAGE
00051.....	20	40030.....	12	86250-6.....	14
00053.....	20	41030.....	12	87200.....	10
00054.....	20	42030.....	12	90020.....	6
00106C.....	15	42030-5.....	12	90021.....	7
00112BL.....	15	42060.....	12	90040.....	7
00120BL.....	15	43030.....	12	90041.....	7
00124BL.....	15	44030.....	12	90099.....	8
00140BL.....	15	45030.....	12	90110.....	7
00207.....	19	45030-6.....	12	90111.....	7
00300.....	19	45060.....	12	90220.....	15
00301.....	18	46030.....	13	90220-4.....	15
00302.....	18	47030.....	13	90440.....	7
00304.....	18	49240.....	13	90441.....	7
00305.....	18	49360.....	13	95040.....	15
00306.....	18	49360 DH.....	13	95050.....	15
00307-4.....	18	49370.....	13	99106.....	7
00310.....	17	49370 DH.....	13	99202.....	8
00311.....	17	50250.....	14	99204.....	8
00320.....	17	50500.....	14	99205.....	8
00324.....	17	50750.....	14	99206.....	8
00331.....	16	51000.....	14	99300.....	8
00331-3.....	16	60250.....	14	99301.....	8
00332.....	16	60500.....	14	99318.....	8
00333.....	16	60750.....	14	99319.....	9
00345.....	17	61000.....	14	99320.....	7
00345 A.....	17	70500.....	14	99323.....	7
00346.....	19	71000.....	14	99330.....	9
00385.....	19	81150.....	10	CBR20250.....	12
00590.....	17	81150-3.....	10	CBR31000.....	12
00710.....	13	81200.....	10	CP1020.....	3
02150.....	10	81250.....	10	CP2040.....	3
02250.....	10	81250-3.....	10	CP3020.....	3
02500.....	10	84150.....	14	CP4040.....	4
10080.....	11	84150-2.....	14	CP8030.....	4
10100.....	11	84150-6.....	14	CP8060.....	4
10150.....	11	84200.....	14	CP9030.....	5
10250.....	11	84250.....	14	CP9040.....	5
110ES.....	6	85150.....	14	CP9060.....	5
20150.....	12	85200-6.....	14	CP9910.....	5
20250-4.....	12	85250.....	14	PS2405.....	32
20500.....	12	86150.....	14	PS2406.....	32
30500.....	12	86250.....	14	PS2407.....	32

<b>PART NO.</b>	<b>PAGE</b>	<b>PART NO.</b>	<b>PAGE</b>	<b>PART NO.</b>	<b>PAGE</b>
PS2408 .....	32	PST126.....	30	PST391.....	27
PS2445 .....	32	PST127.....	30	PST392.....	27
PSB3414 .....	32	PST132.....	24	PW120.....	15
PSB3415 .....	32	PST133.....	24	PW28.....	15
PSB3424 .....	29	PST140.....	28		
PSB3444 .....	32	PST141.....	28		
PST001.....	21	PST142.....	31		
PST002.....	21	PST143.....	31		
PST003.....	21	PST144.....	31		
PST004.....	21	PST147.....	26		
PST005.....	22	PST148.....	26		
PST006.....	22	PST149.....	26		
PST007.....	22	PST150.....	31		
PST010.....	22	PST151.....	28		
PST014.....	22	PST152.....	26		
PST024.....	21	PST153.....	28		
PST025.....	21	PST154.....	31		
PST026.....	21	PST156.....	29		
PST027.....	21	PST157.....	29		
PST028.....	22	PST158.....	28		
PST029.....	22	PST159.....	29		
PST030.....	23	PST160.....	29		
PST050.....	23	PST161.....	29		
PST052.....	23	PST162.....	26		
PST053.....	23	PST163.....	31		
PST070.....	24	PST164.....	26		
PST071.....	25	PST165.....	28		
PST073.....	24	PST166.....	28		
PST074.....	25	PST167.....	31		
PST075.....	25	PST168.....	29		
PST076.....	25	PST170.....	26		
PST085.....	23	PST171.....	32		
PST088.....	23	PST173.....	31		
PST090.....	24	PST185.....	27		
PST095.....	24	PST187.....	27		
PST109.....	23	PST188.....	27		
PST110.....	30	PST191.....	32		
PST111.....	30	PST192.....	33		
PST112.....	30	PST211.....	26		
PST113.....	30	PST232.....	24		
PST114.....	30	PST233.....	24		
PST125.....	30	PST390.....	27		





---

**Brasscraft Manufacturing Co.**  
39600 Orchard Hill Place  
Novi, Michigan 48375-5331  
TOLL-FREE: (877) 272-7755  
FAX: (248) 305-6011

[www.cobratools.com](http://www.cobratools.com)