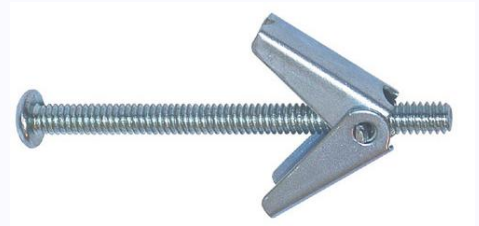




Spring Toggle Bolt

Product Description

The Spring Toggle Bolt is a toggle anchor made of steel. The Spring toggle bolt is great for ceilings. It is offered in a variety of lengths for thicker material and is not recommended for drywall installation. The two metal wings are spring loaded and open behind the wall when inserted. 20 sizes are available, from 1/8" x 2" to 3/8" x 6". For a faster result and an easier way to install, try the NEW DrillerToggle from Cobra.



Features & Benefits

- ▶ 20 sizes available: from 1/8" x 2" to 3/8" x 6".
- ▶ Designed for thick wall application
- ▶ Could be used in all type of hollow material

Perfect for:



Kitchen cabinet, ceiling applications etc...

Packagings



Sizes available

- 1/8" x 2" 1/8" x 3"
- 1/8" x 4" 3/16" x 2"
- 3/16" x 3" 3/16" x 4"
- 3/16" x 5" 3/16" x 6"
- 1/4" x 3" 1/4" x 4"
- 1/4" x 5" 1/4" x 6"
- 3/8" x 3" 3/8" x 4"
- 3/8" x 5" 3/8" x 6"

Suitable Base Materials

- ▶ Drywall 3/8" – Wallboard 10 mm
- ▶ Drywall 1/2" – Wallboard 13 mm
- ▶ Drywall 5/8" – Wallboard 16 mm
- ▶ Plaster walls
- ▶ HOLLOWED BLOCK





Spring Toggle Bolt

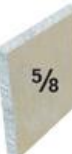
Load Capacities



Material	Size	Material	Head Styles	Drill Size	Grip Range	PULL MAX lbs	PULL SAFE lbs	SHEAR MAX lbs	SHEAR SAFE lbs	PULL MAX kg	PULL SAFE kg	SHEAR MAX kg	SHEAR SAFE kg
Drywall 3/8 Wallboard 10 mm	1/8" x 2"	Plated Steel	Truss	3/8"	3/8"	115	58	120	60	52	26	54	27
	1/8" x 3"	Plated Steel	Truss	3/8"	3/8"	115	58	120	60	52	26	54	27
	1/8" x 4"	Plated Steel	Truss	3/8"	3/8"	115	58	120	60	52	26	54	27
	3/16" x 2"	Plated Steel	Pan	1/2"	1/2"	130	65	140	70	59	29	64	32
	3/16" x 3"	Plated Steel	Pan	1/2"	1/2"	130	65	140	70	59	29	64	32
	3/16" x 4"	Plated Steel	Pan	1/2"	1/2"	130	65	140	70	59	29	64	32
	3/16" x 5"	Plated Steel	Pan	1/2"	1/2"	130	65	140	70	59	29	64	32
	3/16" x 6"	Plated Steel	Pan	1/2"	1/2"	130	65	140	70	59	29	64	32
	1/4" x 3"	Plated Steel	Pan	5/8"	5/8"	215	108	210	105	98	49	95	48
	1/4" x 4"	Plated Steel	Pan	5/8"	5/8"	215	108	210	105	98	49	95	48
	1/4" x 5"	Plated Steel	Pan	5/8"	5/8"	215	108	210	105	98	49	95	48
	1/4" x 6"	Plated Steel	Pan	5/8"	5/8"	215	108	210	105	98	49	95	48
	3/8" x 3"	Plated Steel	Pan	1"	1"	245	123	250	125	111	56	113	57
	3/8" x 4"	Plated Steel	Pan	1"	1"	245	123	250	125	111	56	113	57
3/8" x 5"	Plated Steel	Pan	1"	1"	245	123	250	125	111	56	113	57	
3/8" x 6"	Plated Steel	Pan	1"	1"	245	123	250	125	111	56	113	57	



Material	Size	Material	Head Styles	Drill Size	Grip Range	PULL MAX lbs	PULL SAFE lbs	SHEAR MAX lbs	SHEAR SAFE lbs	PULL MAX kg	PULL SAFE kg	SHEAR MAX kg	SHEAR SAFE kg
Drywall 1/2 Wallboard 13 mm	1/8" x 2"	Plated Steel	Truss	3/8"	3/8"	150	75	135	68	68	34	61	31
	1/8" x 3"	Plated Steel	Truss	3/8"	3/8"	150	75	135	68	68	34	61	31
	1/8" x 4"	Plated Steel	Truss	3/8"	3/8"	150	75	135	68	68	34	61	31
	3/16" x 2"	Plated Steel	Pan	1/2"	1/2"	185	93	190	95	84	42	86	43
	3/16" x 3"	Plated Steel	Pan	1/2"	1/2"	185	93	190	95	84	42	86	43
	3/16" x 4"	Plated Steel	Pan	1/2"	1/2"	185	93	190	95	84	42	86	43
	3/16" x 5"	Plated Steel	Pan	1/2"	1/2"	185	93	190	95	84	42	86	43
	3/16" x 6"	Plated Steel	Pan	1/2"	1/2"	185	93	190	95	84	42	86	43
	1/4" x 3"	Plated Steel	Pan	5/8"	5/8"	235	118	235	118	107	53	107	53
	1/4" x 4"	Plated Steel	Pan	5/8"	5/8"	235	118	235	118	107	53	107	53
	1/4" x 5"	Plated Steel	Pan	5/8"	5/8"	235	118	235	118	107	53	107	53
	1/4" x 6"	Plated Steel	Pan	5/8"	5/8"	235	118	235	118	107	53	107	53
	3/8" x 3"	Plated Steel	Pan	1"	1"	255	128	295	148	116	58	134	67
	3/8" x 4"	Plated Steel	Pan	1"	1"	255	128	295	148	116	58	134	67
3/8" x 5"	Plated Steel	Pan	1"	1"	255	128	295	148	116	58	134	67	
3/8" x 6"	Plated Steel	Pan	1"	1"	255	128	295	148	116	58	134	67	



Material	Size	Material	Head Styles	Drill Size	Grip Range	PULL MAX lbs	PULL SAFE lbs	SHEAR MAX lbs	SHEAR SAFE lbs	PULL MAX kg	PULL SAFE kg	SHEAR MAX kg	SHEAR SAFE kg
Drywall 5/8 Wallboard 16 mm	1/8" x 2"	Plated Steel	Truss	3/8"	3/8"	190	95	180	90	86	43	82	41
	1/8" x 3"	Plated Steel	Truss	3/8"	3/8"	190	95	180	90	86	43	82	41
	1/8" x 4"	Plated Steel	Truss	3/8"	3/8"	190	95	180	90	86	43	82	41
	3/16" x 2"	Plated Steel	Pan	1/2"	1/2"	235	118	235	118	107	53	107	53
	3/16" x 3"	Plated Steel	Pan	1/2"	1/2"	235	118	235	118	107	53	107	53
	3/16" x 4"	Plated Steel	Pan	1/2"	1/2"	235	118	235	118	107	53	107	53
	3/16" x 5"	Plated Steel	Pan	1/2"	1/2"	235	118	235	118	107	53	107	53
	3/16" x 6"	Plated Steel	Pan	1/2"	1/2"	235	118	235	118	107	53	107	53
	1/4" x 3"	Plated Steel	Pan	5/8"	5/8"	265	133	260	130	120	60	118	59
	1/4" x 4"	Plated Steel	Pan	5/8"	5/8"	265	133	260	130	120	60	118	59
	1/4" x 5"	Plated Steel	Pan	5/8"	5/8"	265	133	260	130	120	60	118	59
	1/4" x 6"	Plated Steel	Pan	5/8"	5/8"	265	133	260	130	120	60	118	59
	3/8" x 3"	Plated Steel	Pan	1"	1"	290	145	315	158	132	66	143	71
	3/8" x 4"	Plated Steel	Pan	1"	1"	290	145	315	158	132	66	143	71
3/8" x 5"	Plated Steel	Pan	1"	1"	290	145	315	158	132	66	143	71	
3/8" x 6"	Plated Steel	Pan	1"	1"	290	145	315	158	132	66	143	71	



Spring Toggle Bolt



Material	Size	Material	Head Styles	Drill Size	Grip Range	PULL MAX lbs	PULL SAFE lbs	SHEAR MAX lbs	SHEAR SAFE lbs	PULL MAX kg	PULL SAFE kg	SHEAR MAX kg	SHEAR SAFE kg
Hollow Block	1/8" x 2 "	Plated Steel	Truss	3/8"	3/8"	195	98	180	90	88	44	82	41
	1/8" x 3 "	Plated Steel	Truss	3/8"	3/8"	195	98	180	90	88	44	82	41
	1/8" x 4 "	Plated Steel	Truss	3/8"	3/8"	195	98	180	90	88	44	82	41
	3/16" x 2 "	Plated Steel	Pan	1/2"	1/2"	340	170	355	178	154	77	161	81
	3/16" x 3 "	Plated Steel	Pan	1/2"	1/2"	340	170	355	178	154	77	161	81
	3/16" x 4 "	Plated Steel	Pan	1/2"	1/2"	340	170	355	178	154	77	161	81
	3/16" x 5 "	Plated Steel	Pan	1/2"	1/2"	340	170	355	178	154	77	161	81
	3/16" x 6 "	Plated Steel	Pan	1/2"	1/2"	340	170	355	178	154	77	161	81
	1/4" x 3 "	Plated Steel	Pan	5/8"	5/8"	350	175	595	298	159	79	270	135
	1/4" x 4 "	Plated Steel	Pan	5/8"	5/8"	350	175	595	298	159	79	270	135
	1/4" x 5 "	Plated Steel	Pan	5/8"	5/8"	350	175	595	298	159	79	270	135
	1/4" x 6 "	Plated Steel	Pan	5/8"	5/8"	350	175	595	298	159	79	270	135
	3/8" x 3 "	Plated Steel	Pan	1"	1"	970	485	705	353	440	220	320	160
	3/8" x 4 "	Plated Steel	Pan	1"	1"	970	485	705	353	440	220	320	160
3/8" x 5 "	Plated Steel	Pan	1"	1"	970	485	705	353	440	220	320	160	
3/8" x 6 "	Plated Steel	Pan	1"	1"	970	485	705	353	440	220	320	160	

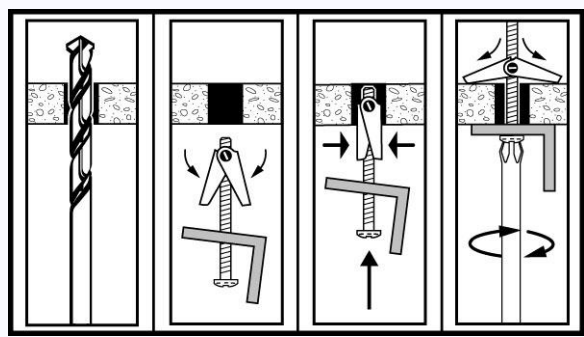
***Always use the safe capacities*

Tools required



Installation instructions

1. Drill an appropriate size hole into the base material (click on "Technical Specifications" for appropriate drill sizes).
2. Insert the Spring Toggle through the object you need to affix.
3. Fold the wings and insert them into the drilled hole.
4. Screw clockwise until there is a strong resistance.



Hollow Wall Anchors